

Info

Number	800890 Application	Author	Alastair Malarky
Date	2024 01 09		
To	TUV SUD		

Tag programmer/Tester T500/T600 Basic Unit – Model - 800890 Internal Photographs

References: FCC ID: JQU800890
IC: 2665A-800890

The Tag Programmer/Tester T500/T600 Basic Unit Model 800890 housing consists of a metal chassis and metal cover. Attached to the metal chassis are the Drawer Assembly, the Patch Antenna Assembly and the RF Module as well as the Drawer Opened/Closed Switch Assembly and a Magnetic Latch.

The Drawer Assembly contains a foam nest for tags. The Magnetic Latch keeps the drawer closed, and the Drawer Opened/Closed Switch assembly detects if the drawer is open or closed.

When the drawer is closed the Patch Antenna Assembly is arranged to form an RF chamber with the tag nest,

The Patch Antenna Assembly comprises a patch antenna on brackets with coaxial cable with inline attenuator to connect to the RF Module.

The RF Module consists of two PCAs: RF PCA and DSP PCA which are mounted on a central metal plate. Each PCA has its own metal cover. The PCAs are interconnected by means of a 70-pin board to board header connector.

The internal photographs of the model tested are shown below.

© 2024 Kapsch TrafficCom Canada Inc., all rights reserved.

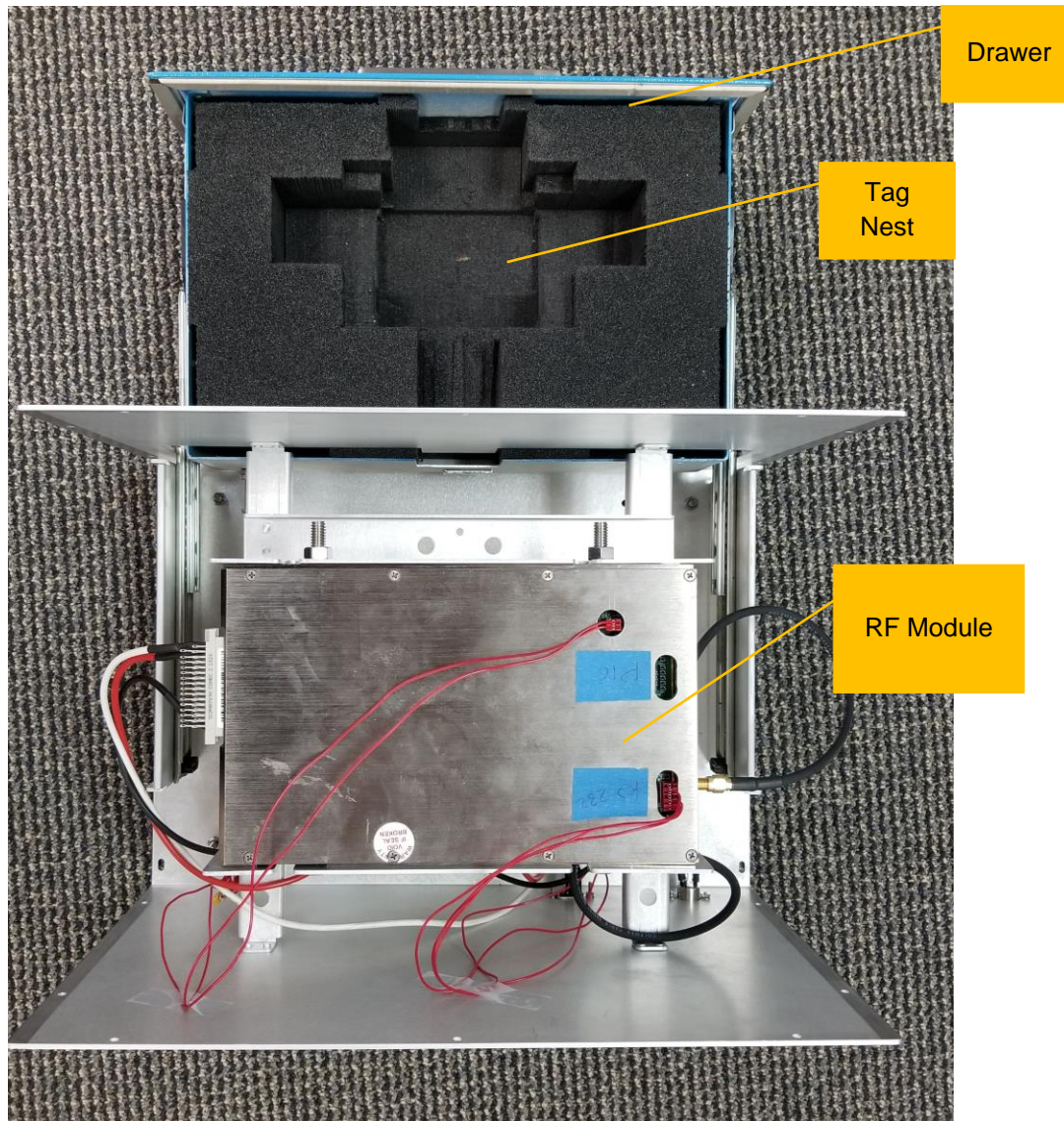
These drawings and specifications contain confidential and proprietary information and are the property of Kapsch TrafficCom Canada Inc. and are issued in strict confidence and will be kept confidential and used solely for the purpose intended and for no other purpose and shall not be transmitted, reproduced, copied, and/or used as the basis for manufacture or sale of apparatus unless otherwise agreed to in writing by Kapsch TrafficCom Canada Inc.

Chassis and Cover - Tag Programmer/Tester T500/T600 Basic Unit Model 800890

© 2024 Kapsch TrafficCom Canada Inc., all rights reserved.

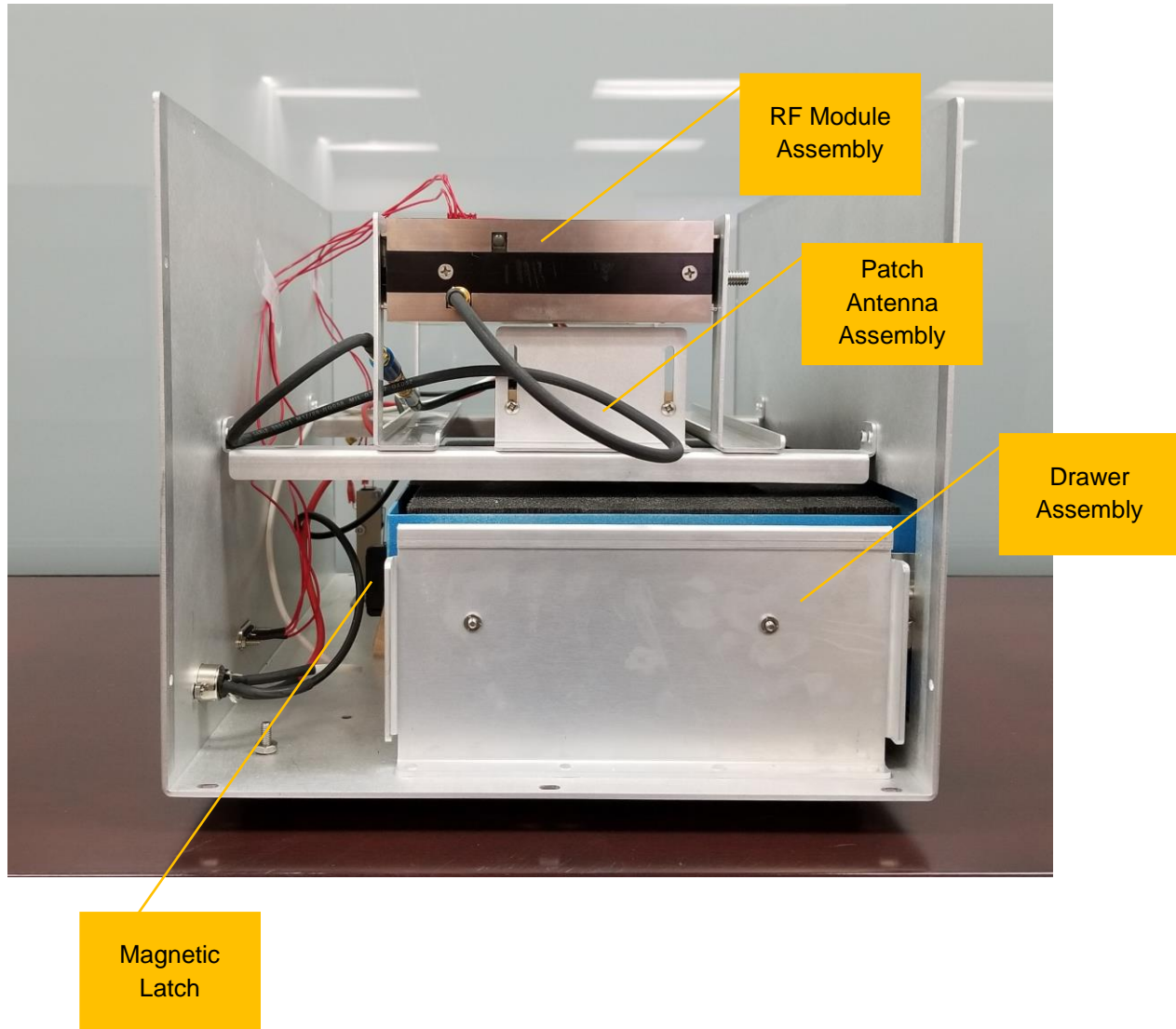
These drawings and specifications contain confidential and proprietary information and are the property of Kapsch TrafficCom Canada Inc. and are issued in strict confidence and will be kept confidential and used solely for the purpose intended and for no other purpose and shall not be transmitted, reproduced, copied, and/or used as the basis for manufacture or sale of apparatus unless otherwise agreed to in writing by Kapsch TrafficCom Canada Inc.

Tag Programmer/Tester T500/T600 Basic Unit Model 800890 - Chassis Top View Photo with the drawer open



© 2024 Kapsch TrafficCom Canada Inc., all rights reserved.

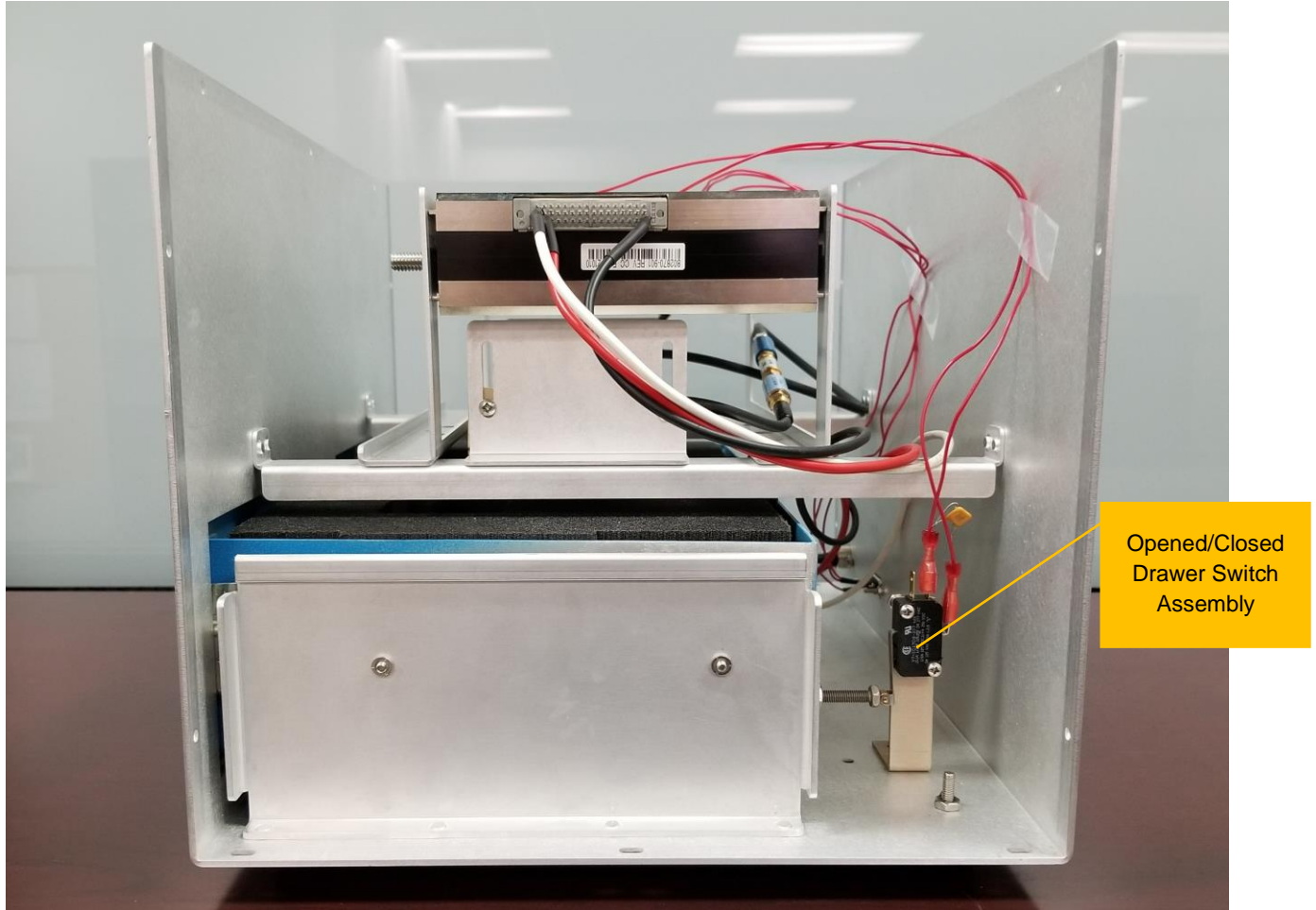
These drawings and specifications contain confidential and proprietary information and are the property of Kapsch TrafficCom Canada Inc. and are issued in strict confidence and will be kept confidential and used solely for the purpose intended and for no other purpose and shall not be transmitted, reproduced, copied, and/or used as the basis for manufacture or sale of apparatus unless otherwise agreed to in writing by Kapsch TrafficCom Canada Inc.

Tag Programmer/Tester T500/T600 Basic Unit Model 800890 - Chassis Left Side Photo

© 2024 Kapsch TrafficCom Canada Inc., all rights reserved.

These drawings and specifications contain confidential and proprietary information and are the property of Kapsch TrafficCom Canada Inc. and are issued in strict confidence and will be kept confidential and used solely for the purpose intended and for no other purpose and shall not be transmitted, reproduced, copied, and/or used as the basis for manufacture or sale of apparatus unless otherwise agreed to in writing by Kapsch TrafficCom Canada Inc.

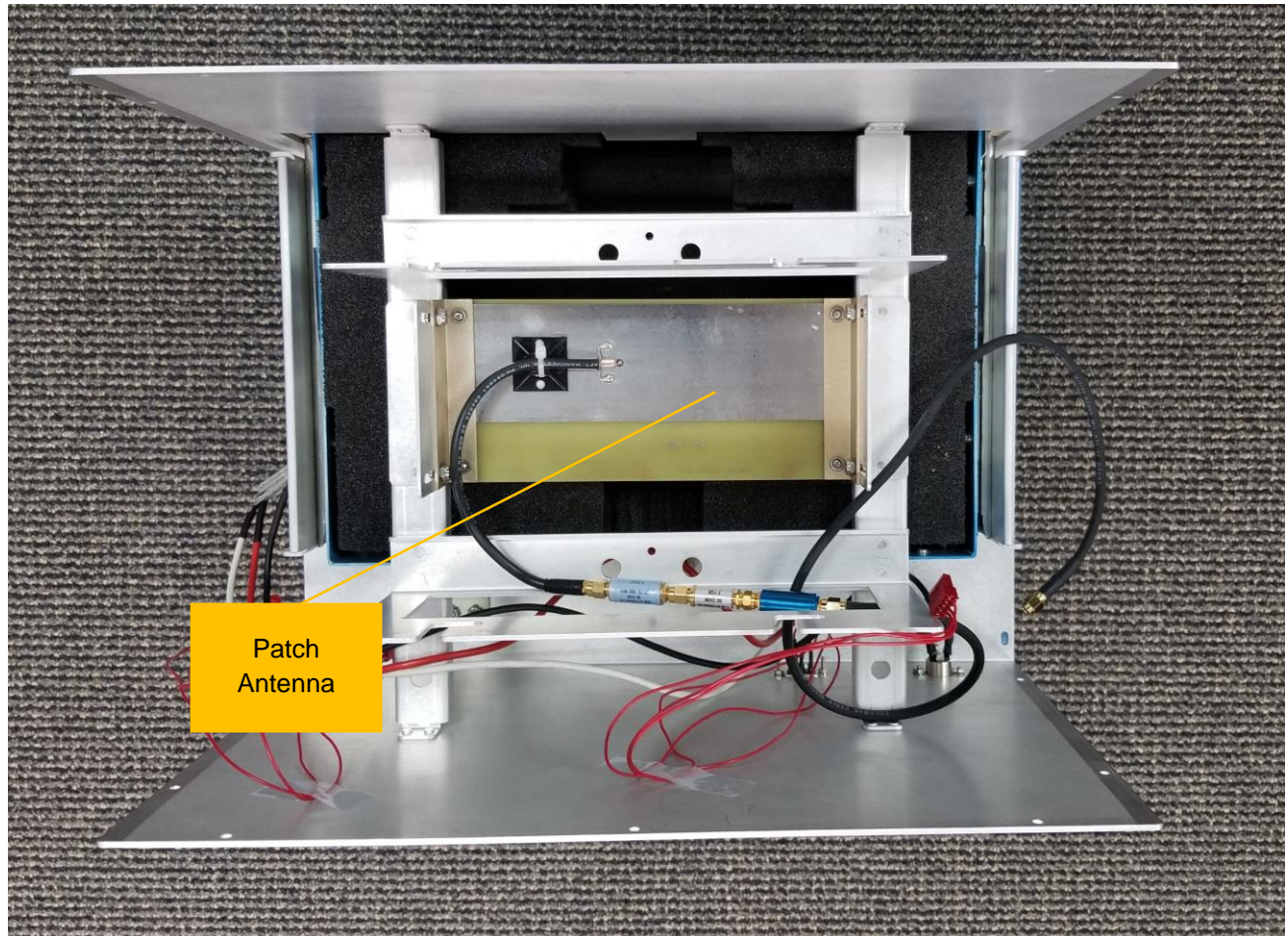
Tag Programmer/Tester T500/T600 Basic Unit Model 800890 Chassis Right Side - Photo



© 2024 Kapsch TrafficCom Canada Inc., all rights reserved.

These drawings and specifications contain confidential and proprietary information and are the property of Kapsch TrafficCom Canada Inc. and are issued in strict confidence and will be kept confidential and used solely for the purpose intended and for no other purpose and shall not be transmitted, reproduced, copied, and/or used as the basis for manufacture or sale of apparatus unless otherwise agreed to in writing by Kapsch TrafficCom Canada Inc.

Tag Programmer/Tester T500/T600 Basic Unit Model 800890 with RF Module removed showing Patch Antenna and Mounting - Photo



© 2024 Kapsch TrafficCom Canada Inc., all rights reserved.

These drawings and specifications contain confidential and proprietary information and are the property of Kapsch TrafficCom Canada Inc. and are issued in strict confidence and will be kept confidential and used solely for the purpose intended and for no other purpose and shall not be transmitted, reproduced, copied, and/or used as the basis for manufacture or sale of apparatus unless otherwise agreed to in writing by Kapsch TrafficCom Canada Inc.

Tag Programmer/Tester T500/T600 Basic Unit Model 800890 Patch Antenna Assembly – Top Photo



© 2024 Kapsch TrafficCom Canada Inc., all rights reserved.

These drawings and specifications contain confidential and proprietary information and are the property of Kapsch TrafficCom Canada Inc. and are issued in strict confidence and will be kept confidential and used solely for the purpose intended and for no other purpose and shall not be transmitted, reproduced, copied, and/or used as the basis for manufacture or sale of apparatus unless otherwise agreed to in writing by Kapsch TrafficCom Canada Inc.

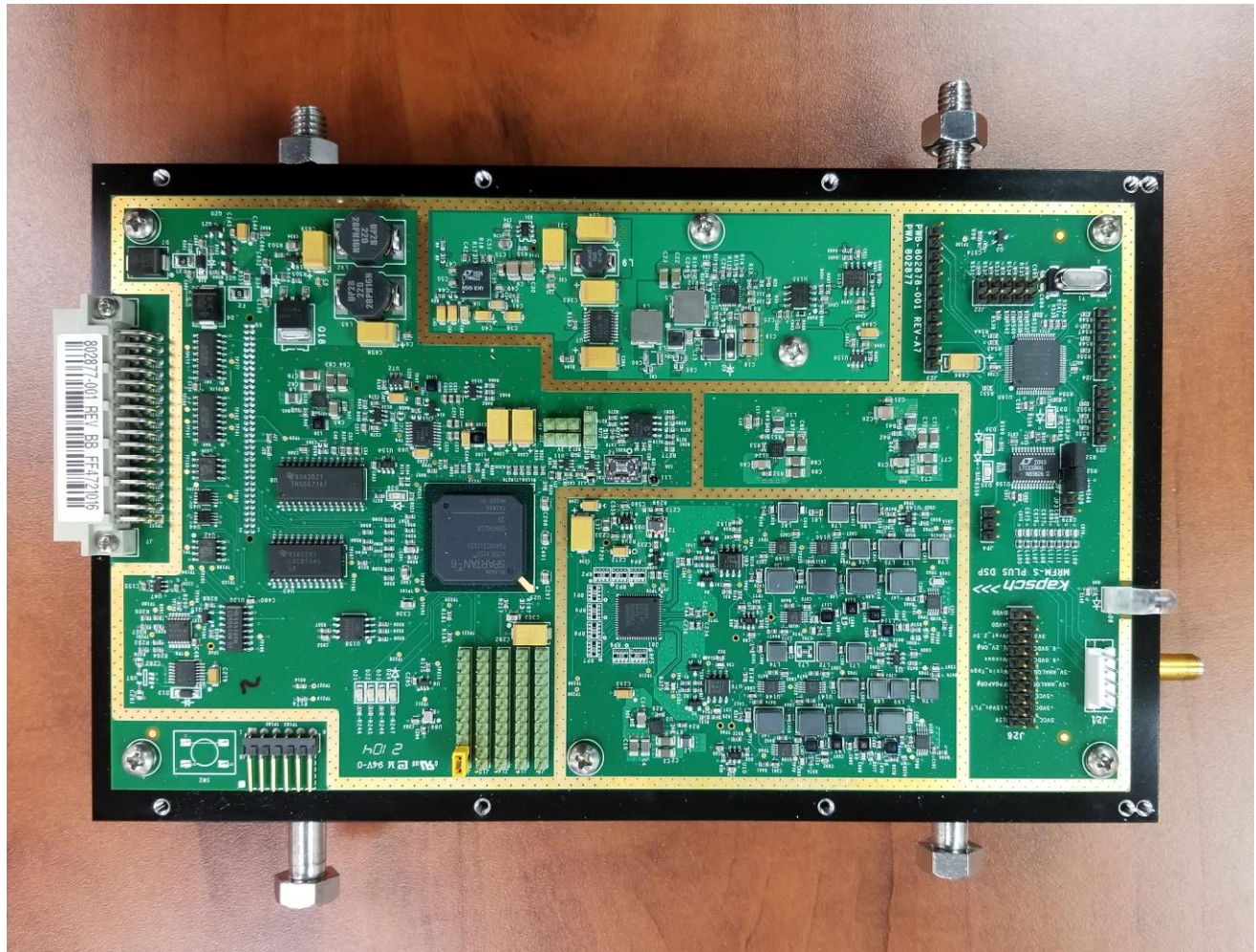
Tag Programmer/Tester T500/T600 Basic Unit Model 800890 Patch Antenna Assembly – Bottom Photo



© 2024 Kapsch TrafficCom Canada Inc., all rights reserved.

These drawings and specifications contain confidential and proprietary information and are the property of Kapsch TrafficCom Canada Inc. and are issued in strict confidence and will be kept confidential and used solely for the purpose intended and for no other purpose and shall not be transmitted, reproduced, copied, and/or used as the basis for manufacture or sale of apparatus unless otherwise agreed to in writing by Kapsch TrafficCom Canada Inc.

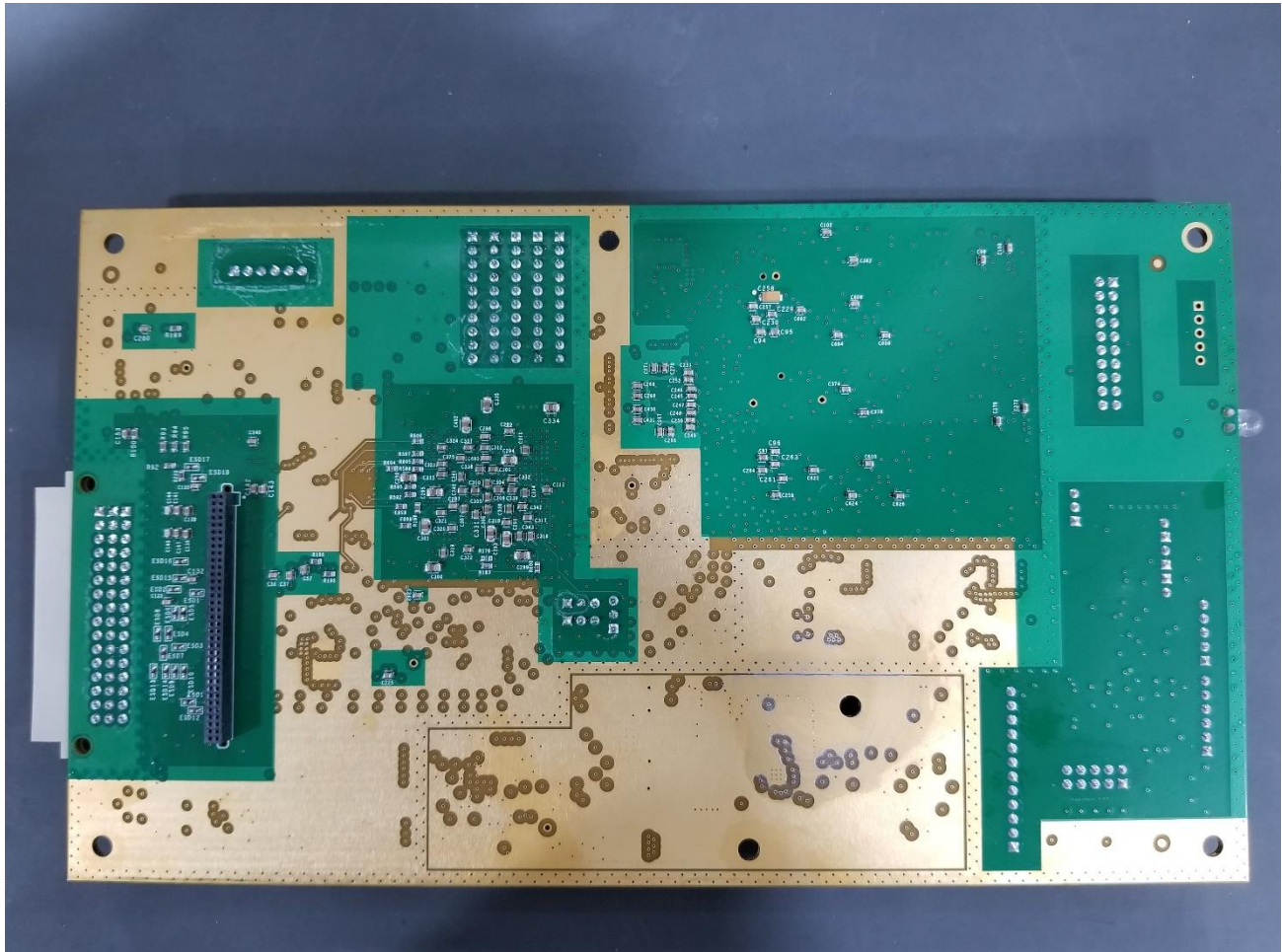
Tag Programmer/Tester T500/T600 Basic Unit Model 800890 RF Module Assembly – DSP PCA on central plate – Top Photo



© 2024 Kapsch TrafficCom Canada Inc., all rights reserved.

These drawings and specifications contain confidential and proprietary information and are the property of Kapsch TrafficCom Canada Inc. and are issued in strict confidence and will be kept confidential and used solely for the purpose intended and for no other purpose and shall not be transmitted, reproduced, copied, and/or used as the basis for manufacture or sale of apparatus unless otherwise agreed to in writing by Kapsch TrafficCom Canada Inc.

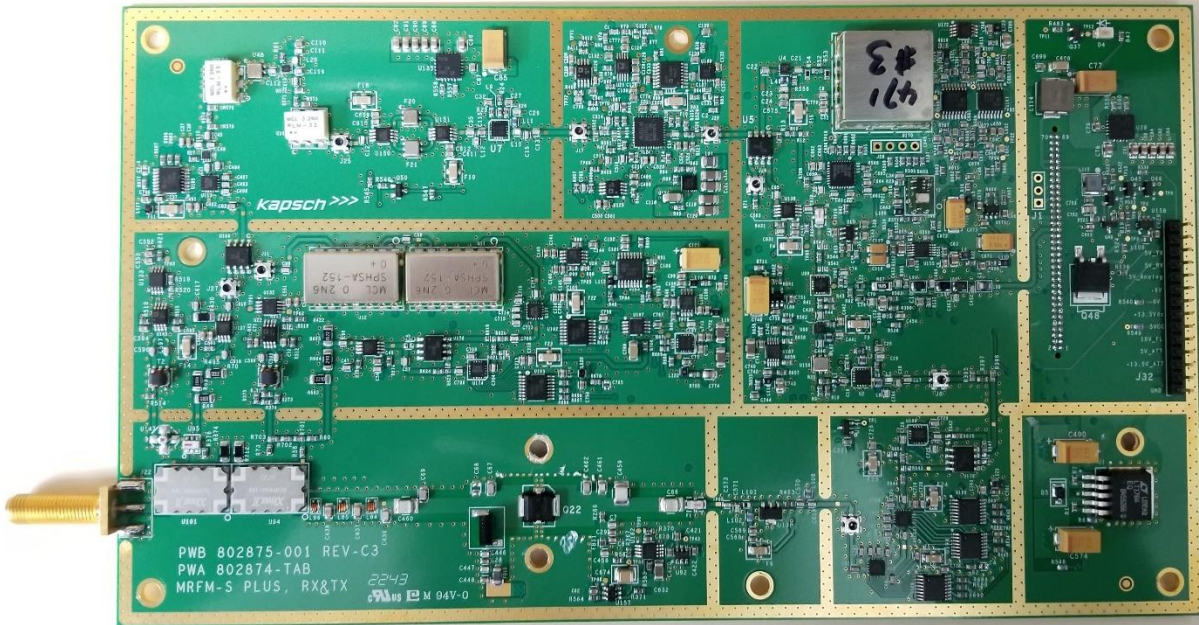
Tag Programmer/Tester T500/T600 Basic Unit Model 800890 RF Module Assembly - RF PCA - Back Photo



© 2024 Kapsch TrafficCom Canada Inc., all rights reserved.

These drawings and specifications contain confidential and proprietary information and are the property of Kapsch TrafficCom Canada Inc. and are issued in strict confidence and will be kept confidential and used solely for the purpose intended and for no other purpose and shall not be transmitted, reproduced, copied, and/or used as the basis for manufacture or sale of apparatus unless otherwise agreed to in writing by Kapsch TrafficCom Canada Inc.

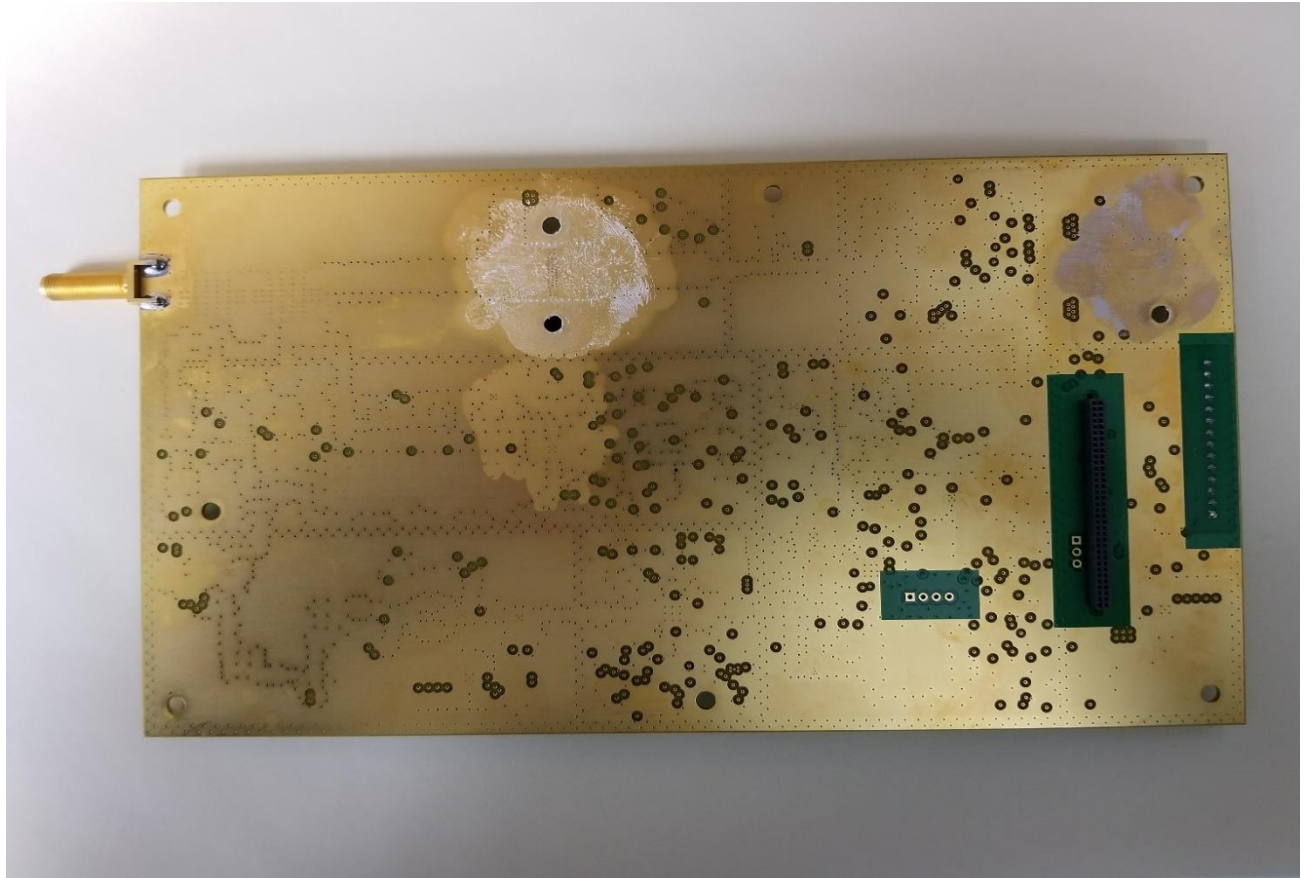
Tag Programmer/Tester T500/T600 Basic Unit Model 800890 RF Module Assembly – RF PCA – Top Photo



© 2024 Kapsch TrafficCom Canada Inc., all rights reserved.

These drawings and specifications contain confidential and proprietary information and are the property of Kapsch TrafficCom Canada Inc. and are issued in strict confidence and will be kept confidential and used solely for the purpose intended and for no other purpose and shall not be transmitted, reproduced, copied, and/or used as the basis for manufacture or sale of apparatus unless otherwise agreed to in writing by Kapsch TrafficCom Canada Inc.

Tag Programmer/Tester T500/T600 Basic Unit Model 800890 RF Module Assembly RF PCA Back Photo



© 2024 Kapsch TrafficCom Canada Inc., all rights reserved.

These drawings and specifications contain confidential and proprietary information and are the property of Kapsch TrafficCom Canada Inc. and are issued in strict confidence and will be kept confidential and used solely for the purpose intended and for no other purpose and shall not be transmitted, reproduced, copied, and/or used as the basis for manufacture or sale of apparatus unless otherwise agreed to in writing by Kapsch TrafficCom Canada Inc.