

SAR Plots

- Verification Plots
- SAR Test Plots

DT&C Co., Ltd.

DUT: Dipole 750 MHz; Type: D750V3; Serial: D750V3 - SN:1049

Communication System: UID 0, CW (0); Frequency: 750 MHz; Duty Cycle: 1:1
Medium parameters used: $f = 750$ MHz; $\sigma = 0.91$ S/m; $\epsilon_r = 42.622$; $\rho = 1000$ kg/m³
Phantom section: Flat Section

DASY5 Configuration:

Probe: EX3DV4 - SN3866; ConvF(9.85, 9.85, 9.85); Calibrated: 5/28/2019; Electronics: DAE4 Sn1394
Sensor-Surface: 2mm (Mechanical Surface Detection)

Phantom: SAM-twin middle_2013_09_24; Type: QD000P40CD; Serial: 1782
Measurement SW: DASY52, Version 52.8 (8); SEMCAD X Version 14.6.10 (7331)

Test Date: 2019-06-28; Ambient Temp: 21.2; Tissue Temp: 21.3

750 MHz System Head Verification (250 mW)

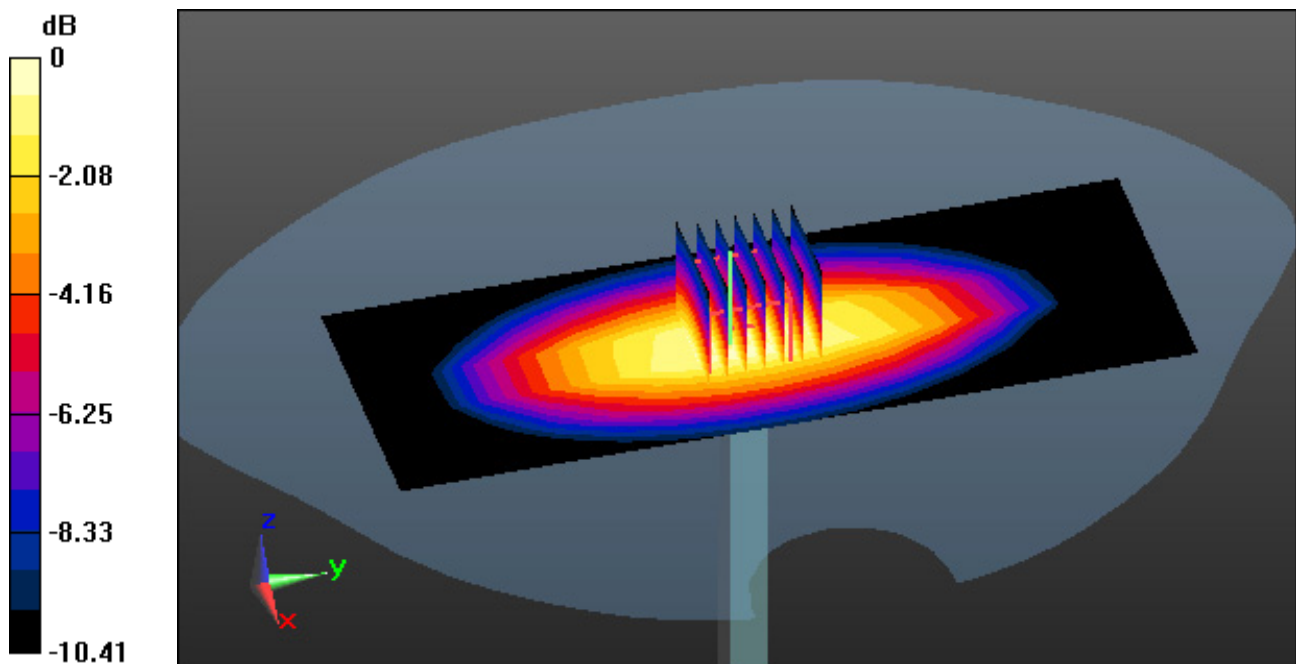
Area Scan (6x15x1): Measurement grid: dx=15mm, dy=15mm

Zoom Scan (7x7x7)/Cube 0: Measurement grid: dx=5mm, dy=5mm, dz=5mm

Power Drift = -0.03 dB

Peak SAR (extrapolated) = 3.28 W/kg

SAR(1 g) = 2.21 W/kg; SAR(10 g) = 1.45 W/kg



0 dB = 2.79 W/kg

DT&C Co., Ltd.

DUT: Dipole 835 MHz; Type: D835V2; Serial: D835V2 - SN:4d159

Communication System: UID 0, CW (0); Frequency: 835 MHz; Duty Cycle: 1:1
Medium parameters used: $f = 835$ MHz; $\sigma = 0.884$ S/m; $\epsilon_r = 42.126$; $\rho = 1000$ kg/m³
Phantom section: Flat Section

DASY5 Configuration:

Probe: EX3DV4 - SN3866; ConvF(9.39, 9.39, 9.39); Calibrated: 5/28/2019; Electronics: DAE4 Sn1394
Sensor-Surface: 2mm (Mechanical Surface Detection)
Phantom: SAM-twin middle_2013_09_24; Type: QD000P40CD; Serial: 1782
Measurement SW: DASY52, Version 52.8 (8); SEMCAD X Version 14.6.10 (7331)

Test Date: 2019-06-25; Ambient Temp: 21.3; Tissue Temp: 21.9

835 MHz System Head Verification (250 mW)

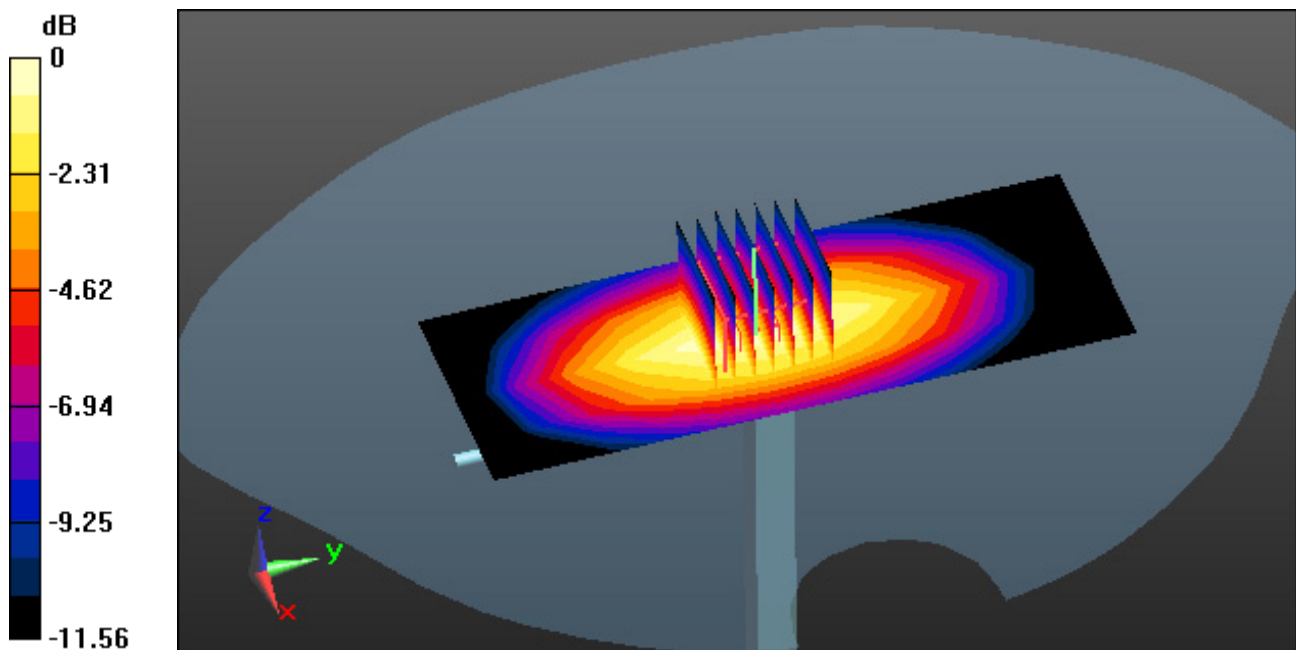
Area Scan (5x12x1): Measurement grid: dx=15mm, dy=15mm

Zoom Scan (7x7x7)/Cube 0: Measurement grid: dx=5mm, dy=5mm, dz=5mm

Power Drift = -0.01 dB

Peak SAR (extrapolated) = 4.17 W/kg

SAR(1 g) = 2.43 W/kg; SAR(10 g) = 1.54 W/kg



0 dB = 3.07 W/kg

DT&C Co., Ltd.

DUT: Dipole 835 MHz; Type: D835V2; Serial: D835V2 - SN:4d159

Communication System: UID 0, CW (0); Frequency: 835 MHz; Duty Cycle: 1:1
Medium parameters used: $f = 835$ MHz; $\sigma = 0.892$ S/m; $\epsilon_r = 41.535$; $\rho = 1000$ kg/m³
Phantom section: Flat Section

DASY5 Configuration:

Probe: EX3DV4 - SN3866; ConvF(9.39, 9.39, 9.39); Calibrated: 5/28/2019; Electronics: DAE4 Sn1394
Sensor-Surface: 2mm (Mechanical Surface Detection)

Phantom: SAM-twin middle_2013_09_24; Type: QD000P40CD; Serial: 1782
Measurement SW: DASY52, Version 52.8 (8); SEMCAD X Version 14.6.10 (7331)

Test Date: 2019-06-27; Ambient Temp: 21.0; Tissue Temp: 21.4

835 MHz System Head Verification (250 mW)

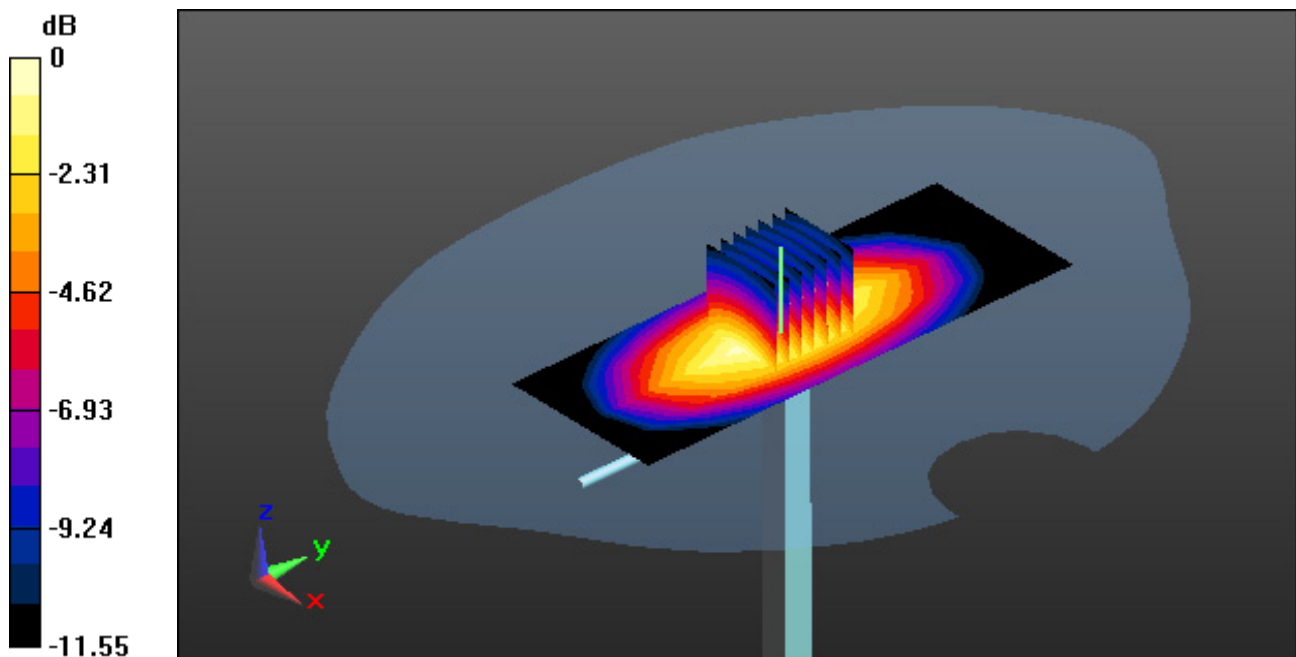
Area Scan (5x12x1): Measurement grid: dx=15mm, dy=15mm

Zoom Scan (7x7x7)/Cube 0: Measurement grid: dx=5mm, dy=5mm, dz=5mm

Power Drift = 0.00 dB

Peak SAR (extrapolated) = 4.18 W/kg

SAR(1 g) = 2.45 W/kg; SAR(10 g) = 1.56 W/kg



0 dB = 3.09 W/kg

DT&C Co., Ltd.

DUT: Dipole 1900 MHz; Type: D1900V2; Serial: D1900V2 - SN:5d176

Communication System: UID 0, CW (0); Frequency: 1900 MHz; Duty Cycle: 1:1
Medium parameters used: $f = 1900$ MHz; $\sigma = 1.417$ S/m; $\epsilon_r = 39.681$; $\rho = 1000$ kg/m³
Phantom section: Flat Section

DASY5 Configuration:

Probe: EX3DV4 - SN3866; ConvF(7.85, 7.85, 7.85); Calibrated: 5/28/2019; Electronics: DAE4 Sn1394
Sensor-Surface: 2mm (Mechanical Surface Detection)
Phantom: SAM-twin right_2013_09_24; Type: QD000P40CD; Serial: TP:1783
Measurement SW: DASY52, Version 52.8 (8); SEMCAD X Version 14.6.10 (7331)

Test Date: 2019-06-26; Ambient Temp: 21.5; Tissue Temp: 22.0

1900 MHz System Head Verification (100 mW)

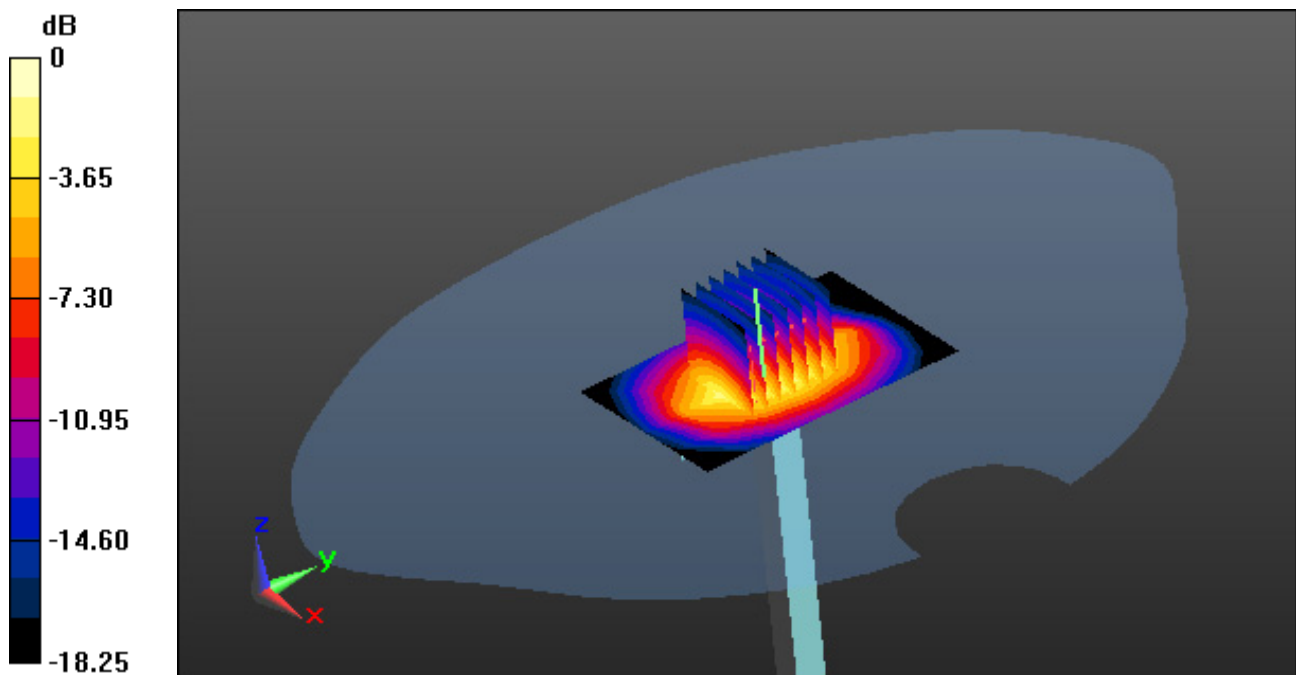
Area Scan (5x7x1): Measurement grid: dx=15mm, dy=15mm

Zoom Scan (7x7x7)/Cube 0: Measurement grid: dx=5mm, dy=5mm, dz=5mm

Power Drift = 0.00 dB

Peak SAR (extrapolated) = 7.68 W/kg

SAR(1 g) = 4.06 W/kg; SAR(10 g) = 2.11 W/kg



DT&C Co., Ltd.

DUT: D2450V2 - SN920; Type: D2450V2; Serial: SN920

Communication System: UID 0, CW (0); Frequency: 2450 MHz; Duty Cycle: 1:1
Medium parameters used: $f = 2450$ MHz; $\sigma = 1.758$ S/m; $\epsilon_r = 38.643$; $\rho = 1000$ kg/m³
Phantom section: Flat Section

DASY5 Configuration:

Probe: EX3DV4 - SN3916; ConvF(7.66, 7.66, 7.66); Calibrated: 4/25/2019; Electronics: DAE4 Sn1392
Sensor-Surface: 2mm (Mechanical Surface Detection)
Phantom: SAM with CRP_2013_10_08_right; Type: QD000P40CD; Serial: TP:1785
Measurement SW: DASY52, Version 52.8 (8); SEMCAD X Version 14.6.10 (7331)

Test Date: 2019-07-01; Ambient Temp: 20.5; Tissue Temp: 20.4

2450 MHz System Head Verification (100 mW)

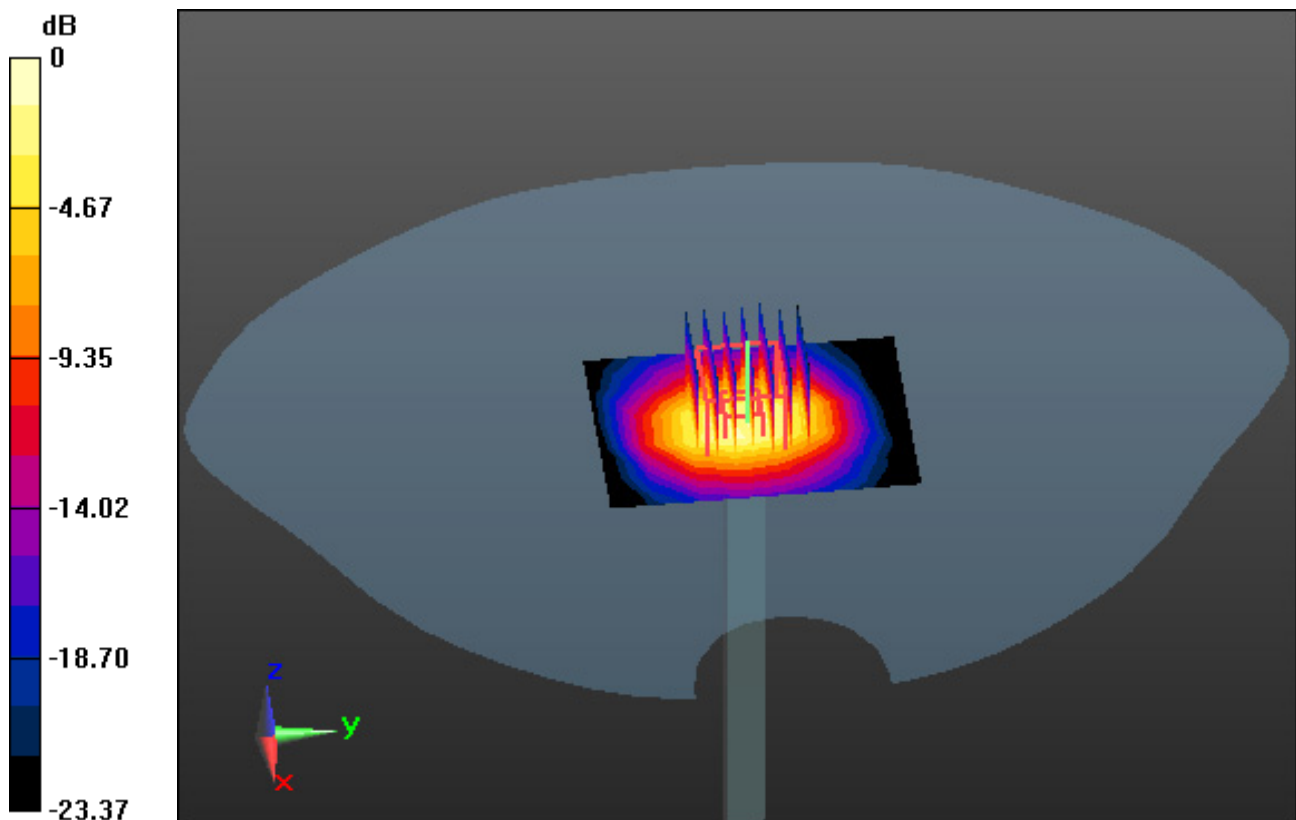
Area Scan (6x8x1): Measurement grid: dx=12mm, dy=12mm

Zoom Scan (7x7x7)/Cube 0: Measurement grid: dx=5mm, dy=5mm, dz=5mm

Power Drift = -0.11 dB

Peak SAR (extrapolated) = 10.4 W/kg

SAR(1 g) = 4.93 W/kg; SAR(10 g) = 2.25 W/kg



0 dB = 7.56 W/kg

DT&C Co., Ltd.

DUT: Dipole 5000 MHz; Type: D5GHzV2; Serial: D5GHzV2 - SN:1103

Communication System: UID 0, CW (0); Frequency: 5300 MHz; Duty Cycle: 1:1
Medium parameters used: $f = 5300$ MHz; $\sigma = 4.664$ S/m; $\epsilon_r = 34.961$; $\rho = 1000$ kg/m³
Phantom section: Flat Section

DASY5 Configuration:

Probe: EX3DV4 - SN3916; ConvF(4.94, 4.94, 4.94); Calibrated: 4/25/2019; Electronics: DAE4 Sn1392
Sensor-Surface: 1.4mm (Mechanical Surface Detection)
Phantom: SAM with CRP_2016_07_22_middle; Type: QD000P40CD; Serial: TP:1786
Measurement SW: DASY52, Version 52.8 (8); SEMCAD X Version 14.6.10 (7331)

Test Date: 2019-07-04; Ambient Temp: 20.9; Tissue Temp: 21.6

5300 MHz System Head Verification (100 mW)

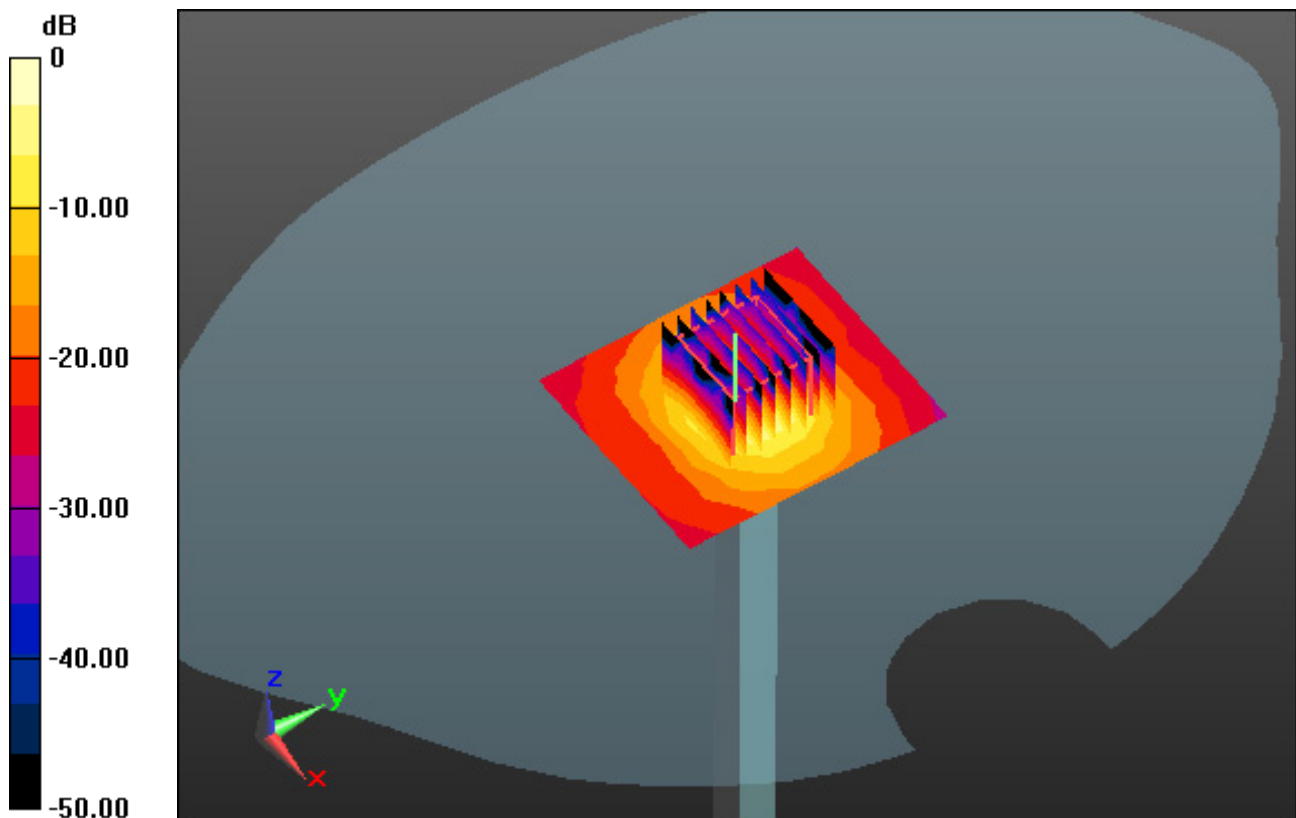
Area Scan (7x8x1): Measurement grid: dx=10mm, dy=10mm

Zoom Scan (8x8x7)/Cube 0: Measurement grid: dx=4mm, dy=4mm, dz=1.4mm, Graded Ratio: 1.4

Power Drift = -0.11 dB

Peak SAR (extrapolated) = 31.9 W/kg

SAR(1 g) = 7.83 W/kg; SAR(10 g) = 2.21 W/kg



0 dB = 18.9 W/kg

DT&C Co., Ltd.

DUT: Dipole D5GHzV2; Type: D5GHzV2; Serial: D5GHzV2 - SN:1103

Communication System: UID 0, CW (0); Frequency: 5500 MHz; Duty Cycle: 1:1
Medium parameters used: $f = 5500$ MHz; $\sigma = 4.802$ S/m; $\epsilon_r = 35.101$; $\rho = 1000$ kg/m³
Phantom section: Flat Section

DASY5 Configuration:

Probe: EX3DV4 - SN3916; ConvF(4.89, 4.89, 4.89); Calibrated: 4/25/2019; Electronics: DAE4 Sn1392
Sensor-Surface: 1.4mm (Mechanical Surface Detection)
Phantom: SAM with CRP_2016_07_22_middle; Type: QD000P40CD; Serial: TP:1786
Measurement SW: DASY52, Version 52.8 (8); SEMCAD X Version 14.6.10 (7331)

Test Date: 2019-07-05; Ambient Temp: 21.0; Tissue Temp: 21.2

5500 MHz System Head Verification (100 mW)

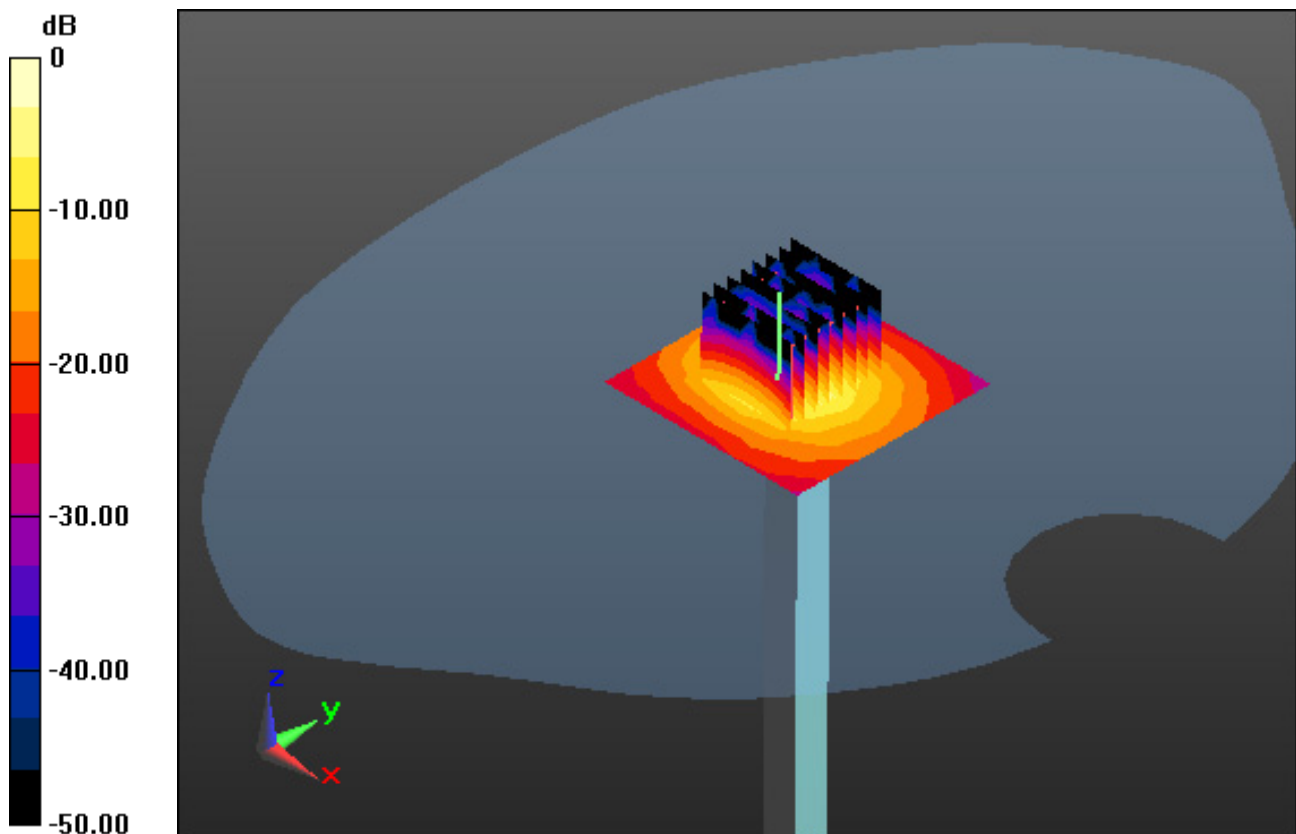
Area Scan (7x7x1): Measurement grid: dx=10mm, dy=10mm

Zoom Scan (8x8x7)/Cube 0: Measurement grid: dx=4mm, dy=4mm, dz=1.4mm, Graded Ratio: 1.4

Power Drift = 0.16 dB

Peak SAR (extrapolated) = 33.6 W/kg

SAR(1 g) = 7.78 W/kg; SAR(10 g) = 2.28 W/kg



0 dB = 19.5 W/kg

DT&C Co., Ltd.

DUT: KB46; Type: Bar

Communication System: UID 0, GSM 850 (0); Frequency: 848.8 MHz; Duty Cycle: 1:8.3
Medium parameters used: $f = 848.8$ MHz; $\sigma = 0.895$ S/m; $\epsilon_r = 42.017$; $\rho = 1000$ kg/m³
Phantom section: Right Section

DASY5 Configuration:

Probe: EX3DV4 - SN3866; ConvF(9.39, 9.39, 9.39); Calibrated: 5/28/2019; Electronics: DAE4 Sn1394
Sensor-Surface: 2mm (Mechanical Surface Detection)
Phantom: SAM-twin middle_2013_09_24; Type: QD000P40CD; Serial: 1782
Measurement SW: DASY52, Version 52.8 (8); SEMCAD X Version 14.6.10 (7331)

Test Date: 2019-06-25; Ambient Temp: 21.3; Tissue Temp: 21.9

Right Touch, GSM850 Ch. 251, Ant Internal, Standard Battery

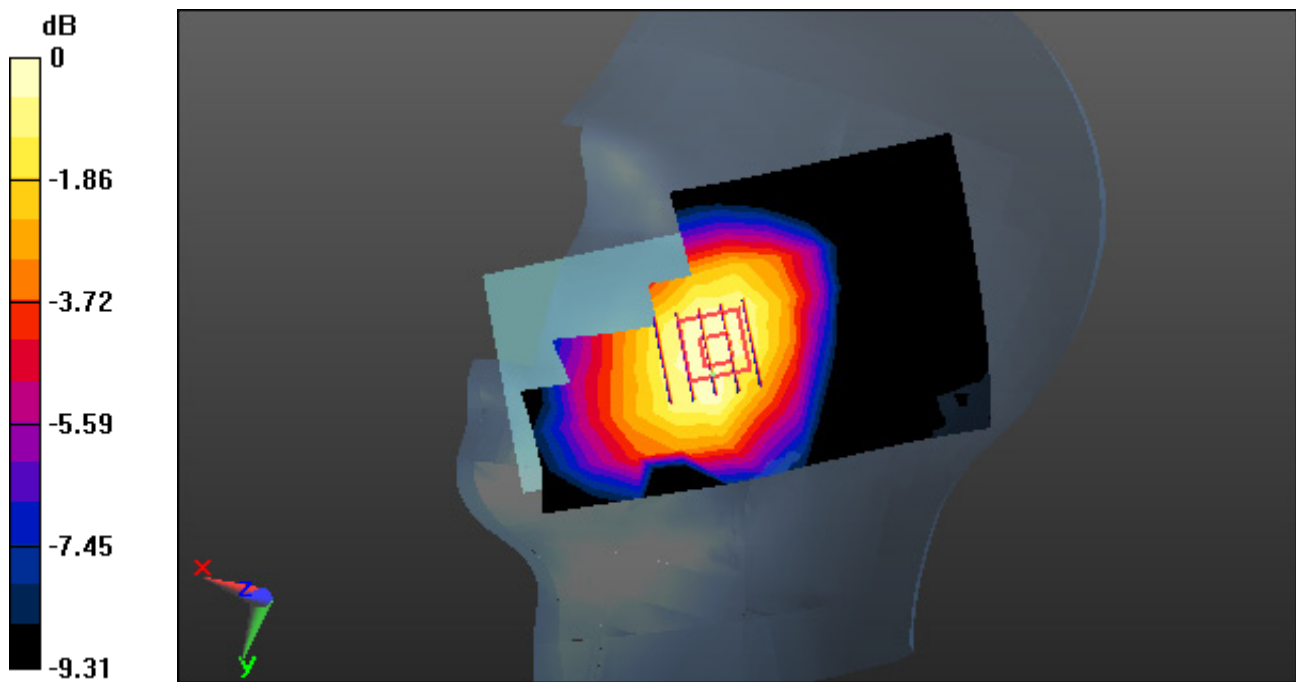
Area Scan (8x14x1): Measurement grid: dx=15mm, dy=15mm

Zoom Scan (5x5x7)/Cube 0: Measurement grid: dx=8mm, dy=8mm, dz=5mm

Power Drift = 0.05 dB

Peak SAR (extrapolated) = 1.11 W/kg

SAR(1 g) = 0.872 W/kg; SAR(10 g) = 0.653 W/kg



0 dB = 0.997 W/kg

DT&C Co., Ltd.

DUT: KB46; Type: Bar

Communication System: UID 0, GSM 850_4 Tx (0); Frequency: 848.8 MHz; Duty Cycle: 1:2.075
Medium parameters used: $f = 848.8$ MHz; $\sigma = 0.895$ S/m; $\epsilon_r = 42.017$; $\rho = 1000$ kg/m³
Phantom section: Right Section

DASY5 Configuration:

Probe: EX3DV4 - SN3866; ConvF(9.39, 9.39, 9.39); Calibrated: 5/28/2019; Electronics: DAE4 Sn1394
Sensor-Surface: 2mm (Mechanical Surface Detection)
Phantom: SAM-twin middle_2013_09_24; Type: QD000P40CD; Serial: 1782
Measurement SW: DASY52, Version 52.8 (8); SEMCAD X Version 14.6.10 (7331)

Test Date: 2019-06-25; Ambient Temp: 21.3; Tissue Temp: 21.9

Right Touch, GSM850 GPRS 4Tx Ch. 251, Ant Internal, Standard Battery

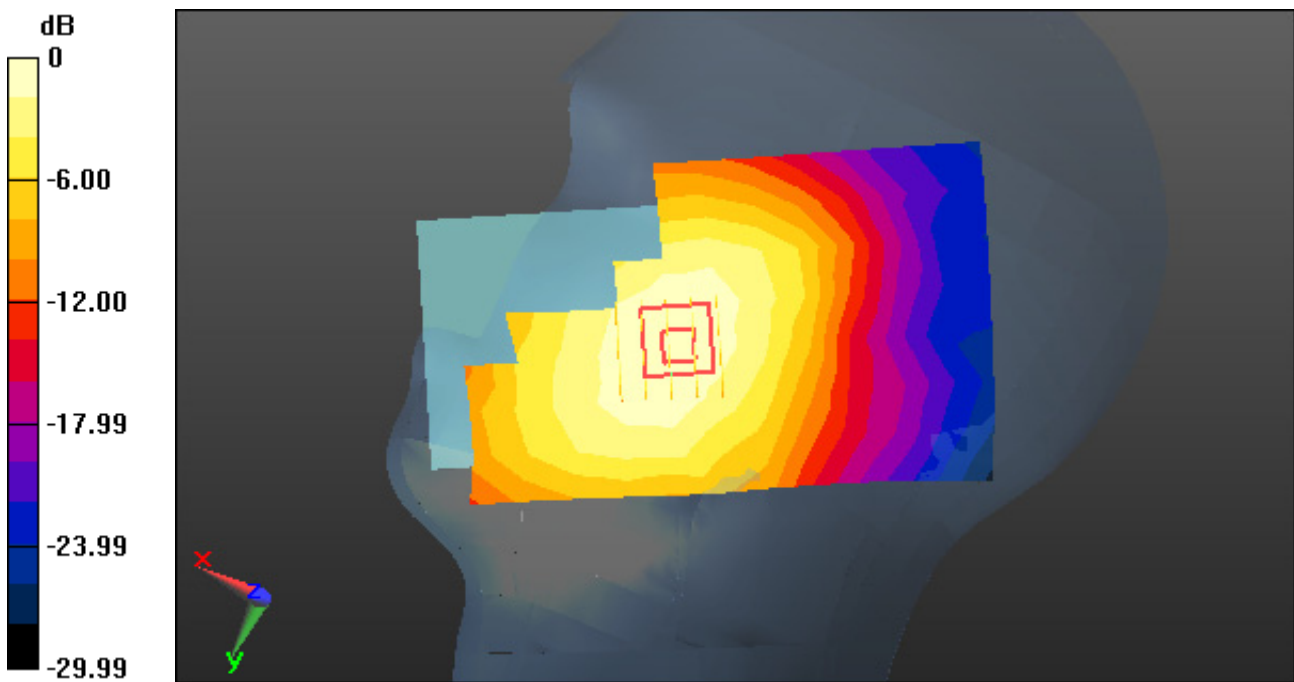
Area Scan (8x14x1): Measurement grid: dx=15mm, dy=15mm

Zoom Scan (5x5x7)/Cube 0: Measurement grid: dx=8mm, dy=8mm, dz=5mm

Power Drift = 0.01 dB

Peak SAR (extrapolated) = 1.14 W/kg

SAR(1 g) = 0.916 W/kg; SAR(10 g) = 0.689 W/kg



0 dB = 1.05 W/kg

DT&C Co., Ltd.

DUT: KB46; Type: Bar

Communication System: UID 0, PCS 1900 (0); Frequency: 1880 MHz; Duty Cycle: 1:8.3
Medium parameters used: $f = 1880$ MHz; $\sigma = 1.398$ S/m; $\epsilon_r = 39.744$; $\rho = 1000$ kg/m³
Phantom section: Right Section

DASY5 Configuration:

Probe: EX3DV4 - SN3866; ConvF(7.85, 7.85, 7.85); Calibrated: 5/28/2019; Electronics: DAE4 Sn1394
Sensor-Surface: 2mm (Mechanical Surface Detection)
Phantom: SAM-twin right_2013_09_24; Type: QD000P40CD; Serial: TP:1783
Measurement SW: DASY52, Version 52.8 (8); SEMCAD X Version 14.6.10 (7331)

Test Date: 2019-06-26; Ambient Temp: 21.5; Tissue Temp: 22.0

Right Touch, PCS1900 Ch. 661, Ant Internal, Standard Battery

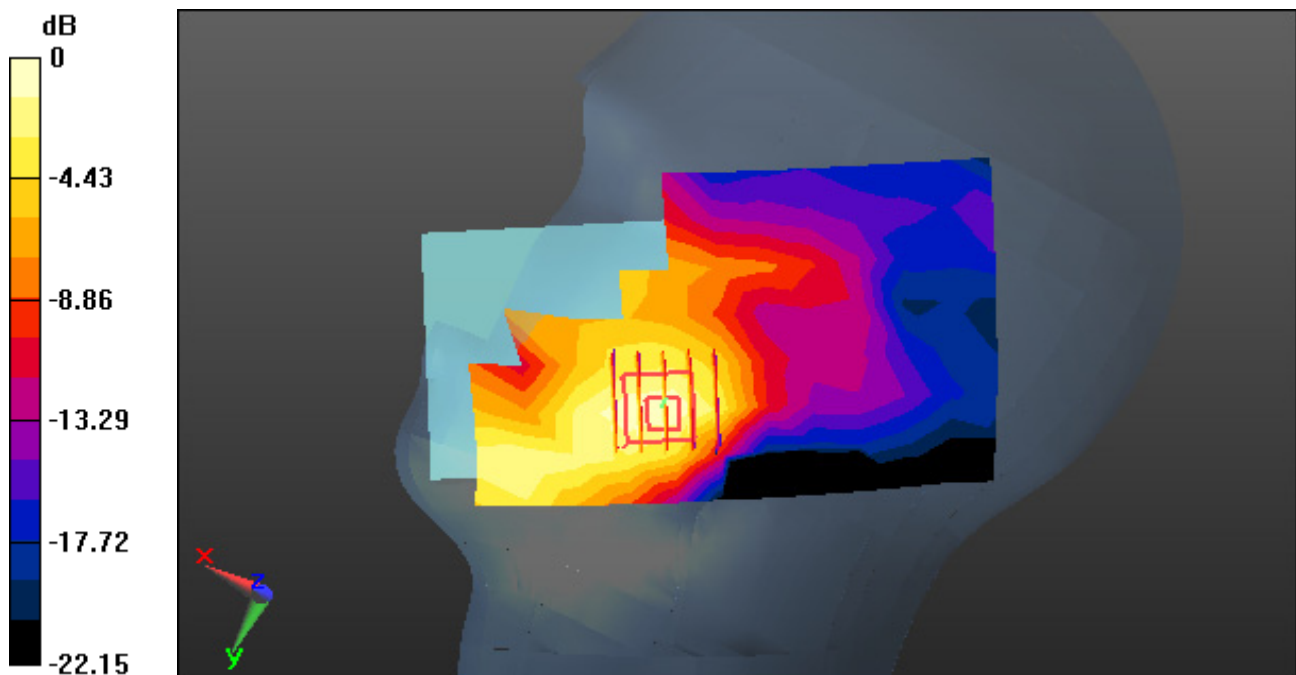
Area Scan (8x14x1): Measurement grid: dx=15mm, dy=15mm

Zoom Scan (5x5x7)/Cube 0: Measurement grid: dx=8mm, dy=8mm, dz=5mm

Power Drift = -0.14 dB

Peak SAR (extrapolated) = 0.360 W/kg

SAR(1 g) = 0.220 W/kg; SAR(10 g) = 0.129 W/kg



0 dB = 0.266 W/kg

DT&C Co., Ltd.

DUT: KB46; Type: Bar

Communication System: UID 0, PCS1900_4 Tx (0); Frequency: 1880 MHz; Duty Cycle: 1:2.075
Medium parameters used: $f = 1880$ MHz; $\sigma = 1.398$ S/m; $\epsilon_r = 39.744$; $\rho = 1000$ kg/m³
Phantom section: Right Section

DASY5 Configuration:

Probe: EX3DV4 - SN3866; ConvF(7.85, 7.85, 7.85); Calibrated: 5/28/2019; Electronics: DAE4 Sn1394
Sensor-Surface: 2mm (Mechanical Surface Detection)
Phantom: SAM-twin right_2013_09_24; Type: QD000P40CD; Serial: TP:1783
Measurement SW: DASY52, Version 52.8 (8); SEMCAD X Version 14.6.10 (7331)

Test Date: 2019-06-26; Ambient Temp: 21.5; Tissue Temp: 22.0

Right Touch, PCS1900 GPRS 4Tx Ch. 661, Ant Internal, Standard Battery

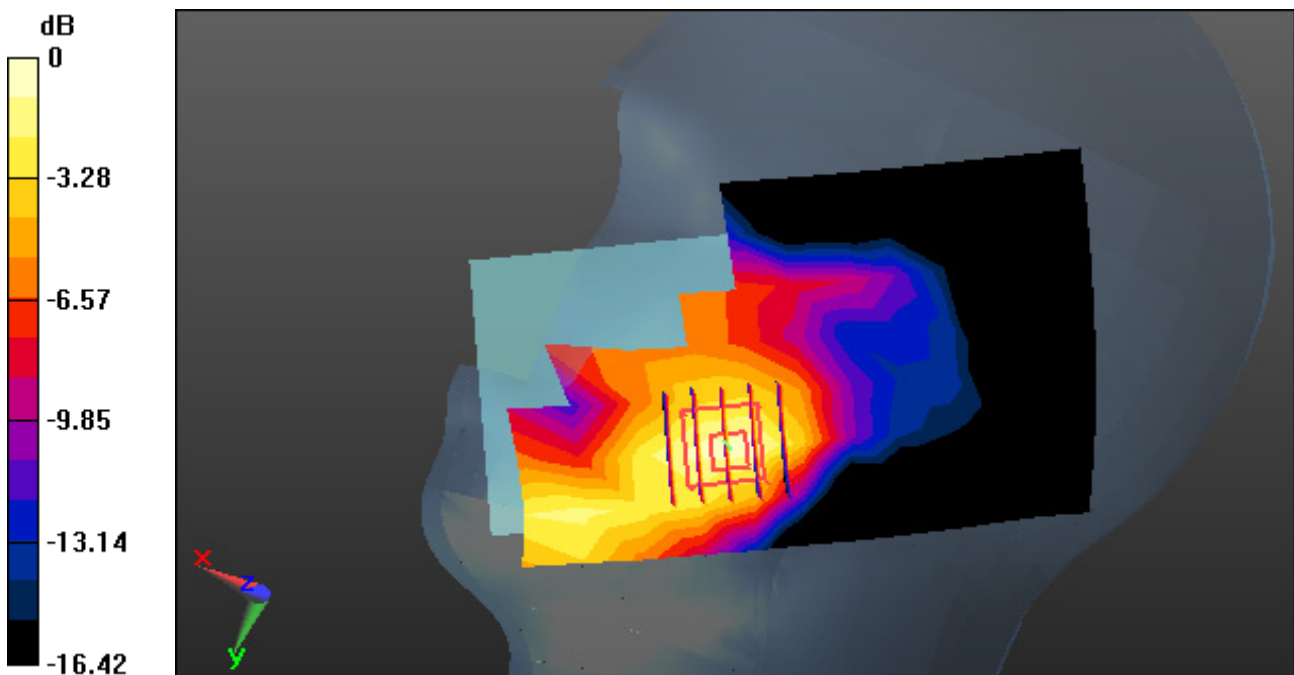
Area Scan (8x14x1): Measurement grid: dx=15mm, dy=15mm

Zoom Scan (5x5x7)/Cube 0: Measurement grid: dx=8mm, dy=8mm, dz=5mm

Power Drift = 0.06 dB

Peak SAR (extrapolated) = 0.359 W/kg

SAR(1 g) = 0.233 W/kg; SAR(10 g) = 0.140 W/kg



0 dB = 0.297 W/kg

DT&C Co., Ltd.

DUT: KB46; Type: Bar

Communication System: UID 0, WCDMA 850 (0); Frequency: 836.6 MHz; Duty Cycle: 1:1
Medium parameters used: $f = 836.6$ MHz; $\sigma = 0.894$ S/m; $\epsilon_r = 41.52$; $\rho = 1000$ kg/m³
Phantom section: Left Section

DASY5 Configuration:

Probe: EX3DV4 - SN3866; ConvF(9.39, 9.39, 9.39); Calibrated: 5/28/2019; Electronics: DAE4 Sn1394
Sensor-Surface: 2mm (Mechanical Surface Detection)
Phantom: SAM-twin middle_2013_09_24; Type: QD000P40CD; Serial: 1782
Measurement SW: DASY52, Version 52.8 (8); SEMCAD X Version 14.6.10 (7331)

Test Date: 2019-06-27; Ambient Temp: 21.0; Tissue Temp: 21.4

Left Touch, WCDMA850 Ch. 4183, Ant Internal, Standard Battery

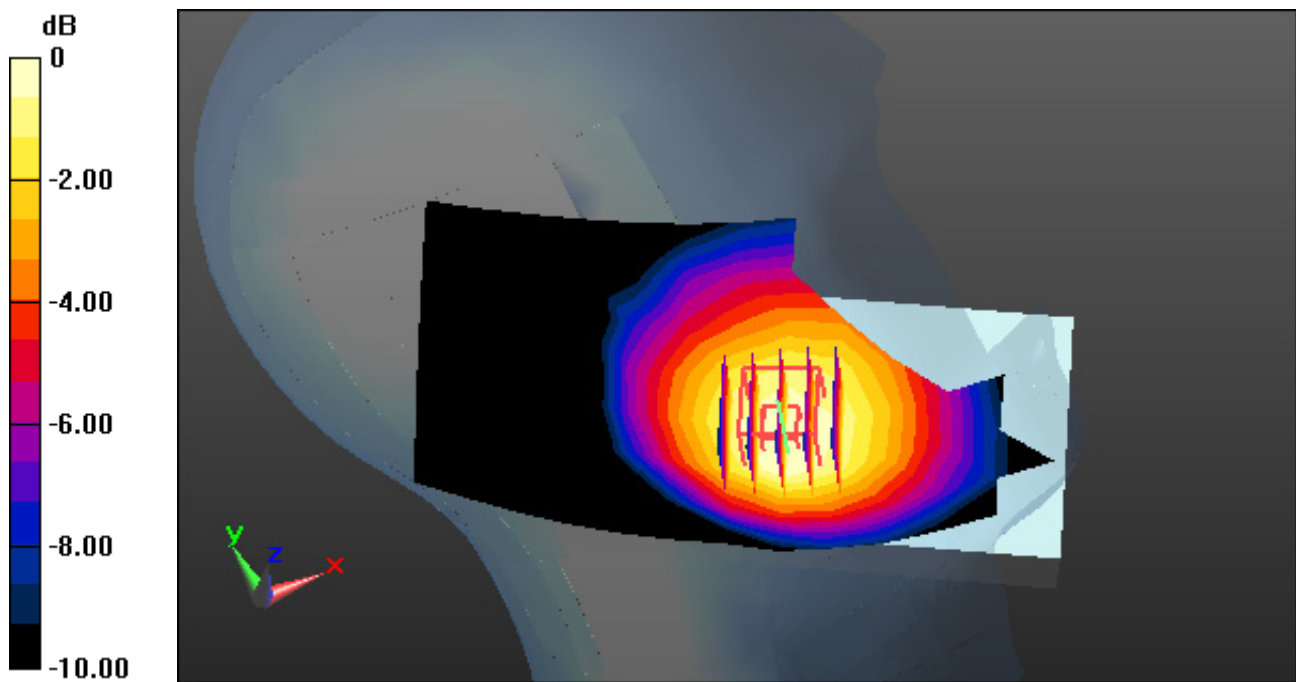
Area Scan (8x14x1): Measurement grid: dx=15mm, dy=15mm

Zoom Scan (5x5x7)/Cube 0: Measurement grid: dx=8mm, dy=8mm, dz=5mm

Power Drift = 0.01 dB

Peak SAR (extrapolated) = 0.818 W/kg

SAR(1 g) = 0.637 W/kg; SAR(10 g) = 0.472 W/kg



0 dB = 0.727 W/kg

DT&C Co., Ltd.

DUT: KB46; Type: Bar

Communication System: UID 0, LTE Band 17 FCC (0); Frequency: 710 MHz; Duty Cycle: 1:1
Medium parameters used: $f = 710 \text{ MHz}$; $\sigma = 0.87 \text{ S/m}$; $\epsilon_r = 42.985$; $\rho = 1000 \text{ kg/m}^3$
Phantom section: Right Section

DASY5 Configuration:

Probe: EX3DV4 - SN3866; ConvF(9.85, 9.85, 9.85); Calibrated: 5/28/2019; Electronics: DAE4 Sn1394
Sensor-Surface: 2mm (Mechanical Surface Detection)
Phantom: SAM-twin middle_2013_09_24; Type: QD000P40CD; Serial: 1782
Measurement SW: DASY52, Version 52.8 (8); SEMCAD X Version 14.6.10 (7331)

Test Date: 2019-06-28; Ambient Temp: 21.2; Tissue Temp: 21.3

Right Touch, LTE Band 17 Ch. 23790, Ant Internal, Standard Battery

Mode : BandWidth 10 MHz, QPSK, RB Size: 1

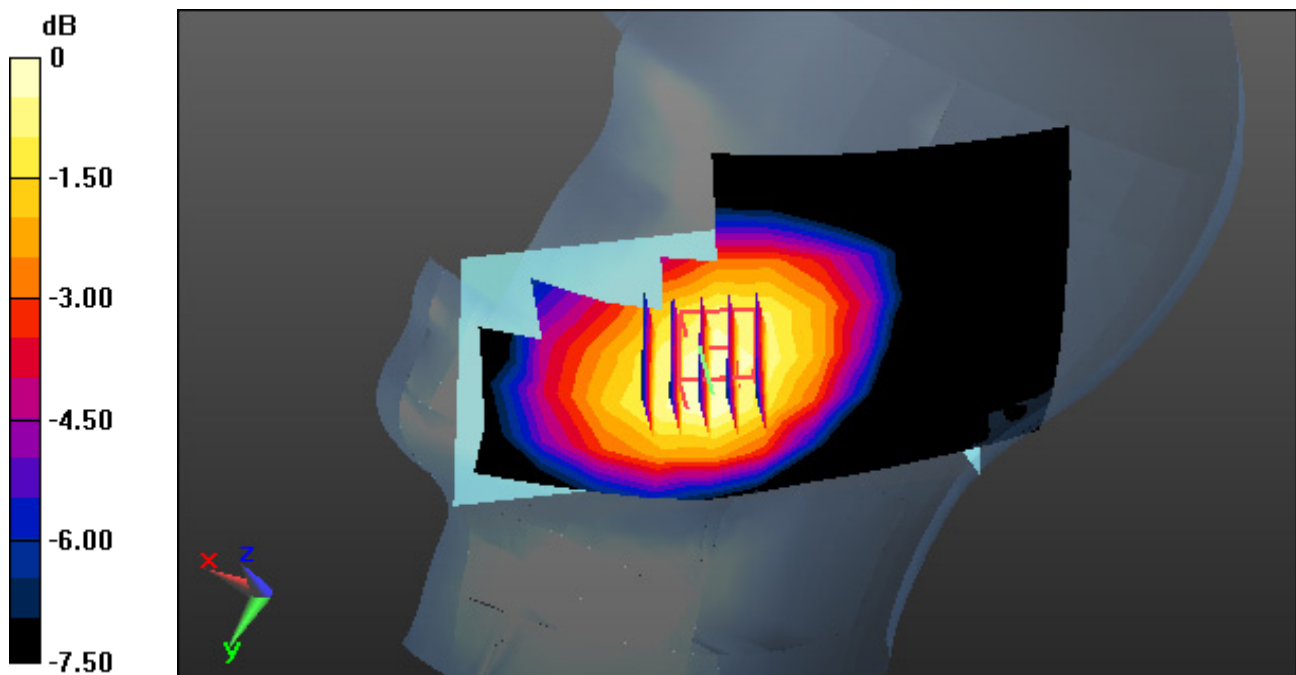
Area Scan (8x14x1): Measurement grid: $dx=15\text{mm}$, $dy=15\text{mm}$

Zoom Scan (5x5x7)/Cube 0: Measurement grid: $dx=8\text{mm}$, $dy=8\text{mm}$, $dz=5\text{mm}$

Power Drift = 0.10 dB

Peak SAR (extrapolated) = 0.499 W/kg

SAR(1 g) = 0.400 W/kg; SAR(10 g) = 0.316 W/kg



0 dB = 0.452 W/kg

DT&C Co., Ltd.

DUT: KB46; Type: Bar

Communication System: UID 0, 00_2.4 GHz W-LAN (0); Frequency: 2462 MHz; Duty Cycle: 1:1
Medium parameters used: $f = 2462$ MHz; $\sigma = 1.77$ S/m; $\epsilon_r = 38.617$; $\rho = 1000$ kg/m³
Phantom section: Right Section

DASY5 Configuration:

Probe: EX3DV4 - SN3916; ConvF(7.66, 7.66, 7.66); Calibrated: 4/25/2019; Electronics: DAE4 Sn1392
Sensor-Surface: 2mm (Mechanical Surface Detection)
Phantom: SAM with CRP_2013_10_08_right; Type: QD000P40CD; Serial: TP:1785
Measurement SW: DASY52, Version 52.8 (8); SEMCAD X Version 14.6.10 (7331)

Test Date: 2019-07-01; Ambient Temp: 20.5; Tissue Temp: 20.4

Right Touch, 2.4G W-LAN(802.11b) Ch. 11, Ant Internal, Standard Battery

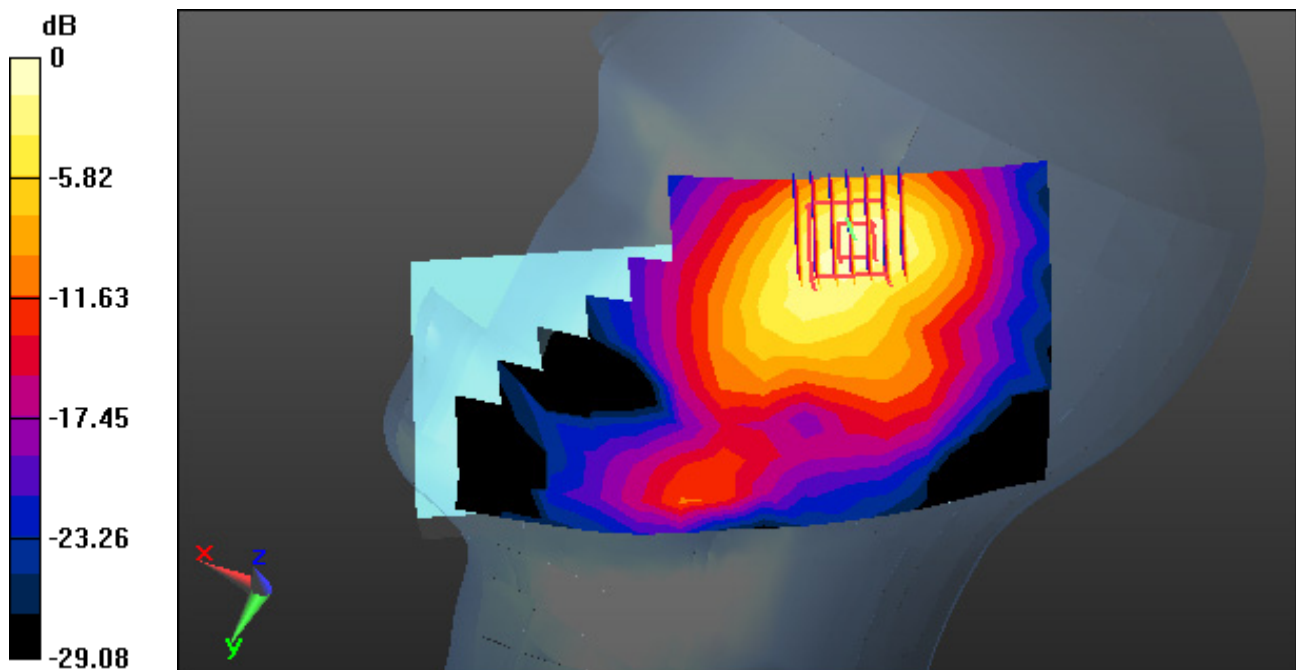
Area Scan (10x17x1): Measurement grid: dx=12mm, dy=12mm

Zoom Scan (7x7x7)/Cube 0: Measurement grid: dx=5mm, dy=5mm, dz=5mm

Power Drift = 0.12 dB

Peak SAR (extrapolated) = 0.524 W/kg

SAR(1 g) = 0.227 W/kg; SAR(10 g) = 0.108 W/kg



0 dB = 0.352 W/kg

DT&C Co., Ltd.

DUT: KB46; Type: Bar

Communication System: UID 0, W-LAN_5300 (0); Frequency: 5320 MHz; Duty Cycle: 1:1
Medium parameters used: $f = 5320$ MHz; $\sigma = 4.715$ S/m; $\epsilon_r = 34.933$; $\rho = 1000$ kg/m³
Phantom section: Right Section

DASY5 Configuration:

Probe: EX3DV4 - SN3916; ConvF(4.94, 4.94, 4.94); Calibrated: 4/25/2019; Electronics: DAE4 Sn1392
Sensor-Surface: 1.4mm (Mechanical Surface Detection)
Phantom: SAM with CRP_2016_07_22_middle; Type: QD000P40CD; Serial: TP:1786
Measurement SW: DASY52, Version 52.8 (8); SEMCAD X Version 14.6.10 (7331)

Test Date: 2019-07-04; Ambient Temp: 20.9; Tissue Temp: 21.6

Right Touch, 5.3G W-LAN(802.11a) Ch. 64, Ant Internal, Standard Battery

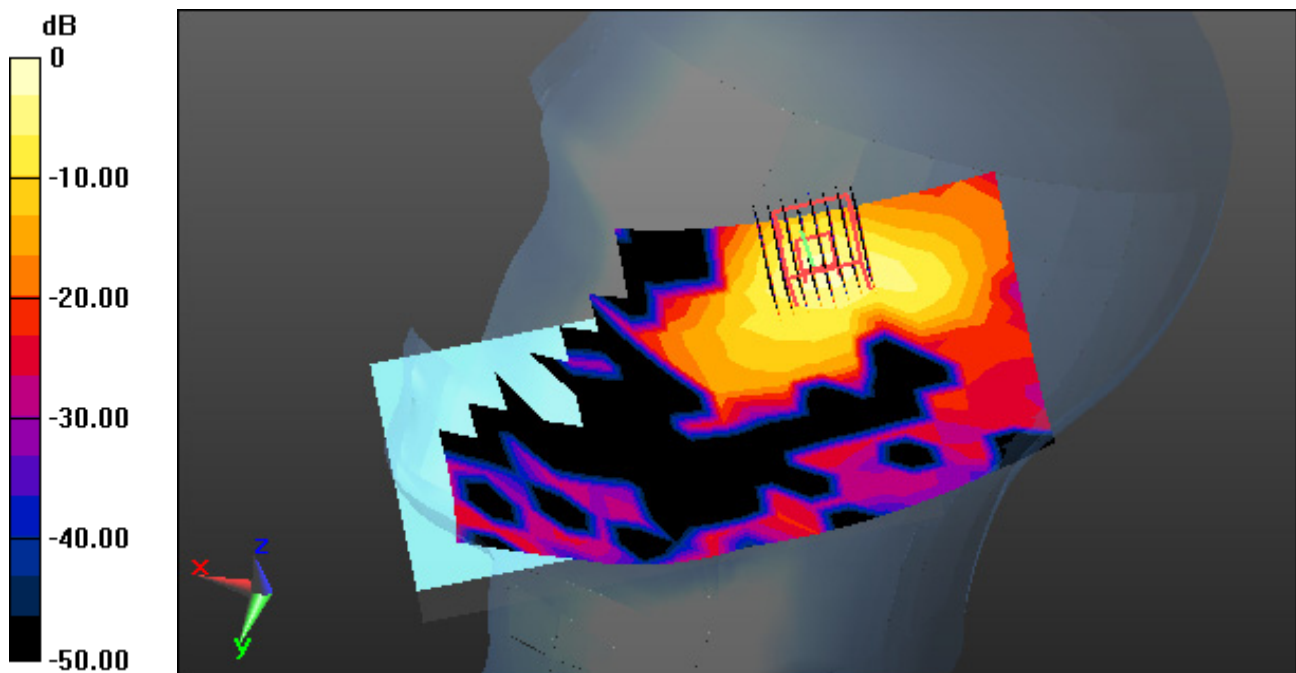
Area Scan (12x21x1): Measurement grid: dx=10mm, dy=10mm

Zoom Scan (8x8x7)/Cube 0: Measurement grid: dx=4mm, dy=4mm, dz=1.4mm, Graded Ratio: 1.4

Power Drift = 0.00 dB

Peak SAR (extrapolated) = 0.892 W/kg

SAR(1 g) = 0.196 W/kg; SAR(10 g) = 0.050 W/kg



0 dB = 0.498 W/kg

DT&C Co., Ltd.

DUT: KB46; Type: Bar

Communication System: UID 0, W-LAN_5600 (0); Frequency: 5700 MHz; Duty Cycle: 1:1
Medium parameters used: $f = 5700$ MHz; $\sigma = 5.067$ S/m; $\epsilon_r = 34.672$; $\rho = 1000$ kg/m³
Phantom section: Right Section

DASY5 Configuration:

Probe: EX3DV4 - SN3916; ConvF(4.75, 4.75, 4.75); Calibrated: 4/25/2019; Electronics: DAE4 Sn1392
Sensor-Surface: 1.4mm (Mechanical Surface Detection)
Phantom: SAM with CRP_2016_07_22_middle; Type: QD000P40CD; Serial: TP:1786
Measurement SW: DASY52, Version 52.8 (8); SEMCAD X Version 14.6.10 (7331)

Test Date: 2019-07-05; Ambient Temp: 21.0; Tissue Temp: 21.2

Right Touch, 5.6G W-LAN(802.11a) Ch. 140, Ant Internal, Standard Battery

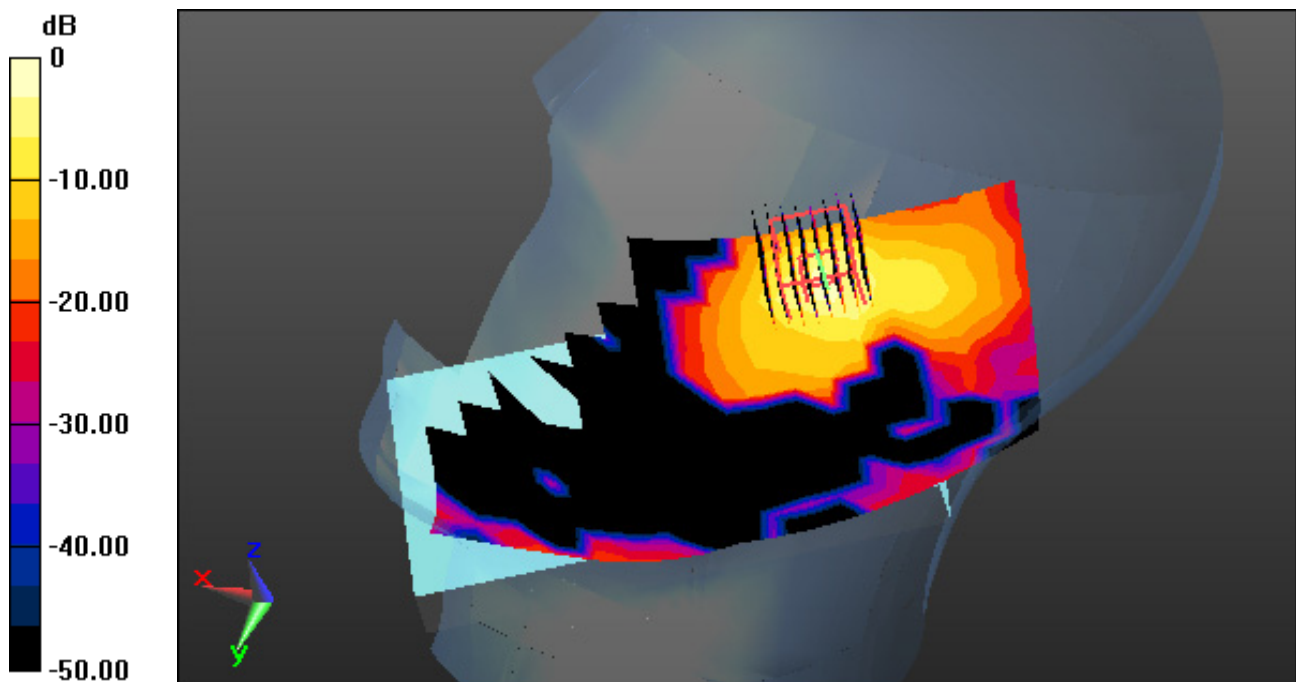
Area Scan (12x21x1): Measurement grid: dx=10mm, dy=10mm

Zoom Scan (8x8x7)/Cube 0: Measurement grid: dx=4mm, dy=4mm, dz=1.4mm, Graded Ratio: 1.4

Power Drift = 0.00 dB

Peak SAR (extrapolated) = 1.05 W/kg

SAR(1 g) = 0.213 W/kg; SAR(10 g) = 0.050 W/kg



0 dB = 0.585 W/kg

DT&C Co., Ltd.

DUT: KB46; Type: Bar

Communication System: UID 0, GSM 850 (0); Frequency: 848.8 MHz; Duty Cycle: 1:8.3
Medium parameters used: $f = 848.8$ MHz; $\sigma = 0.895$ S/m; $\epsilon_r = 42.017$; $\rho = 1000$ kg/m³
Phantom section: Flat Section

DASY5 Configuration:

Probe: EX3DV4 - SN3866; ConvF(9.39, 9.39, 9.39); Calibrated: 5/28/2019; Electronics: DAE4 Sn1394
Sensor-Surface: 2mm (Mechanical Surface Detection)
Phantom: SAM-twin middle_2013_09_24; Type: QD000P40CD; Serial: 1782
Measurement SW: DASY52, Version 52.8 (8); SEMCAD X Version 14.6.10 (7331)

Test Date: 2019-06-25; Ambient Temp: 21.3; Tissue Temp: 21.9

1cm space from Body, Front, GSM850 Ch. 251, Ant Internal

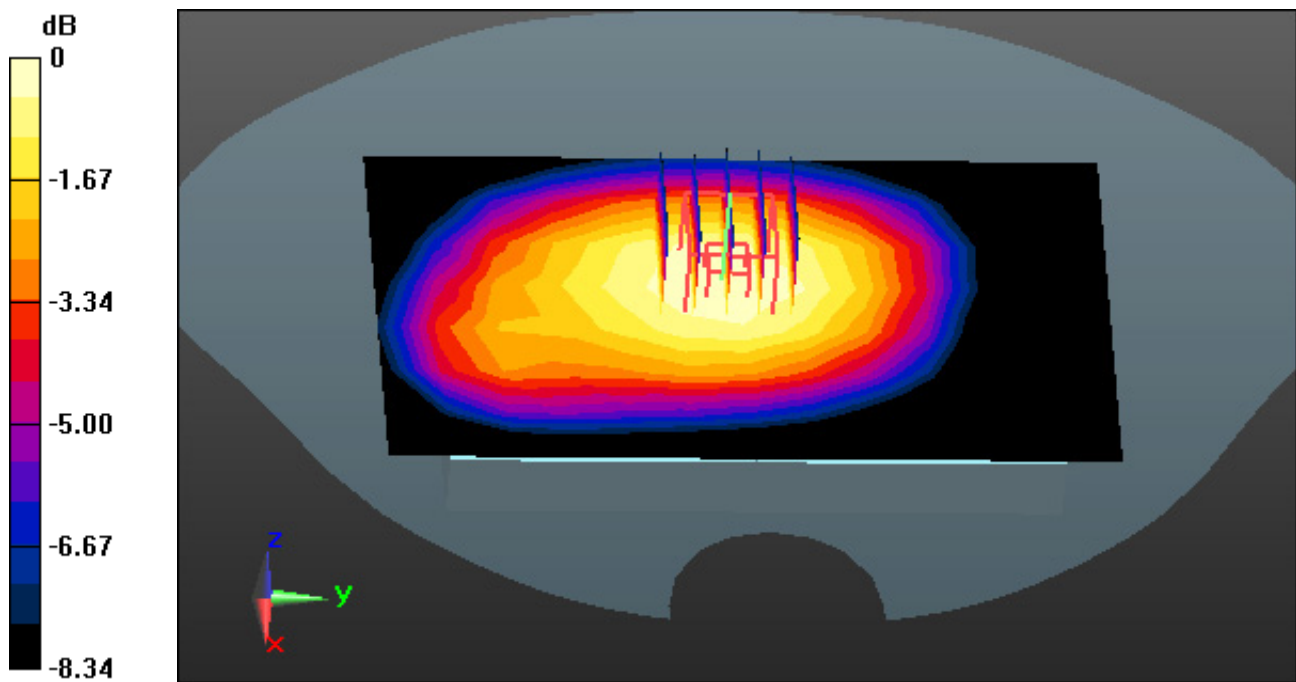
Area Scan (8x13x1): Measurement grid: dx=15mm, dy=15mm

Zoom Scan (5x5x7)/Cube 0: Measurement grid: dx=8mm, dy=8mm, dz=5mm

Power Drift = -0.03 dB

Peak SAR (extrapolated) = 1.19 W/kg

SAR(1 g) = 0.948 W/kg; SAR(10 g) = 0.709 W/kg



0 dB = 1.09 W/kg

DT&C Co., Ltd.

DUT: KB46; Type: Bar

Communication System: UID 0, GSM 850_4 Tx (0); Frequency: 848.8 MHz; Duty Cycle: 1:2.075
Medium parameters used: $f = 848.8$ MHz; $\sigma = 0.895$ S/m; $\epsilon_r = 42.017$; $\rho = 1000$ kg/m³
Phantom section: Flat Section

DASY5 Configuration:

Probe: EX3DV4 - SN3866; ConvF(9.39, 9.39, 9.39); Calibrated: 5/28/2019; Electronics: DAE4 Sn1394
Sensor-Surface: 2mm (Mechanical Surface Detection)
Phantom: SAM-twin middle_2013_09_24; Type: QD000P40CD; Serial: 1782
Measurement SW: DASY52, Version 52.8 (8); SEMCAD X Version 14.6.10 (7331)

Test Date: 2019-06-25; Ambient Temp: 21.3; Tissue Temp: 21.9

1cm space from Body, Rear, GSM850 GPRS 4Tx Ch. 251, Ant Internal

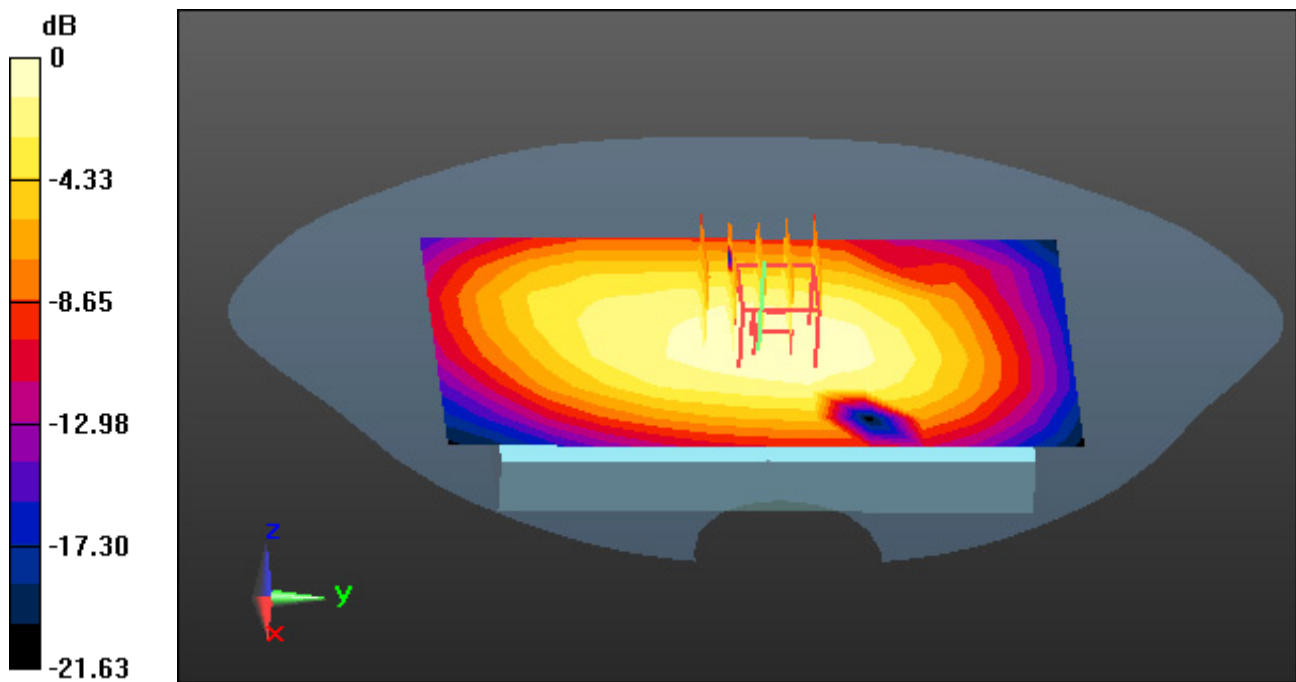
Area Scan (8x13x1): Measurement grid: dx=15mm, dy=15mm

Zoom Scan (5x5x7)/Cube 0: Measurement grid: dx=8mm, dy=8mm, dz=5mm

Power Drift = -0.19 dB

Peak SAR (extrapolated) = 1.32 W/kg

SAR(1 g) = 1.01 W/kg; SAR(10 g) = 0.748 W/kg



0 dB = 1.18 W/kg

DT&C Co., Ltd.

DUT: KB46; Type: Bar

Communication System: UID 0, PCS 1900 (0); Frequency: 1909.8 MHz; Duty Cycle: 1:8.3
Medium parameters used: $f = 1909.8$ MHz; $\sigma = 1.426$ S/m; $\epsilon_r = 39.649$; $\rho = 1000$ kg/m³
Phantom section: Flat Section

DASY5 Configuration:

Probe: EX3DV4 - SN3866; ConvF(7.85, 7.85, 7.85); Calibrated: 5/28/2019; Electronics: DAE4 Sn1394
Sensor-Surface: 2mm (Mechanical Surface Detection)
Phantom: SAM-twin right_2013_09_24; Type: QD000P40CD; Serial: TP:1783
Measurement SW: DASY52, Version 52.8 (8); SEMCAD X Version 14.6.10 (7331)

Test Date: 2019-06-26; Ambient Temp: 21.5; Tissue Temp: 22.0

1cm space from Body, Rear, PCS1900 Ch. 810, Ant Internal

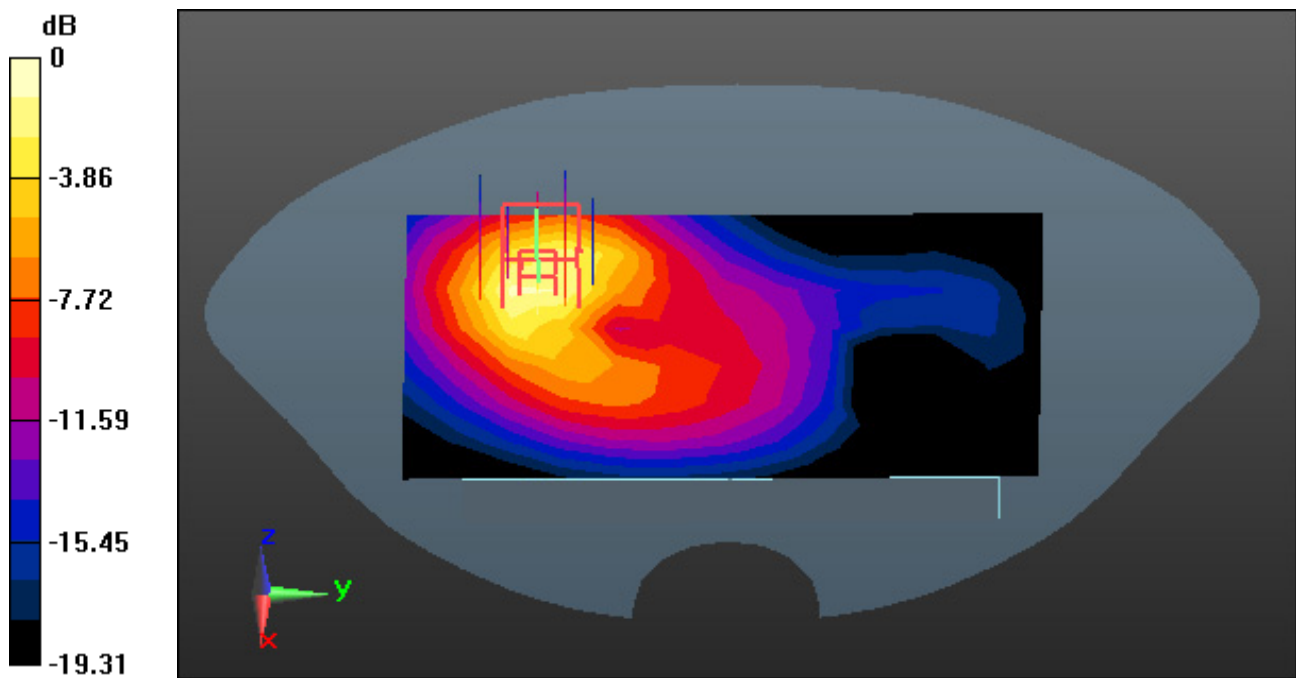
Area Scan (8x13x1): Measurement grid: dx=15mm, dy=15mm

Zoom Scan (5x5x7)/Cube 0: Measurement grid: dx=8mm, dy=8mm, dz=5mm

Power Drift = 0.06 dB

Peak SAR (extrapolated) = 1.49 W/kg

SAR(1 g) = 0.860 W/kg; SAR(10 g) = 0.465 W/kg



0 dB = 1.18 W/kg

DT&C Co., Ltd.

DUT: KB46; Type: Bar

Communication System: UID 0, PCS1900_4 Tx (0); Frequency: 1909.8 MHz; Duty Cycle: 1:2.075
Medium parameters used: $f = 1909.8$ MHz; $\sigma = 1.426$ S/m; $\epsilon_r = 39.649$; $\rho = 1000$ kg/m³
Phantom section: Flat Section

DASY5 Configuration:

Probe: EX3DV4 - SN3866; ConvF(7.85, 7.85, 7.85); Calibrated: 5/28/2019; Electronics: DAE4 Sn1394
Sensor-Surface: 2mm (Mechanical Surface Detection)
Phantom: SAM-twin right_2013_09_24; Type: QD000P40CD; Serial: TP:1783
Measurement SW: DASY52, Version 52.8 (8); SEMCAD X Version 14.6.10 (7331)

Test Date: 2019-06-26; Ambient Temp: 21.5; Tissue Temp: 22.0

1cm space from Body, Rear, PCS1900 GPRS 4Tx Ch. 810, Ant Internal

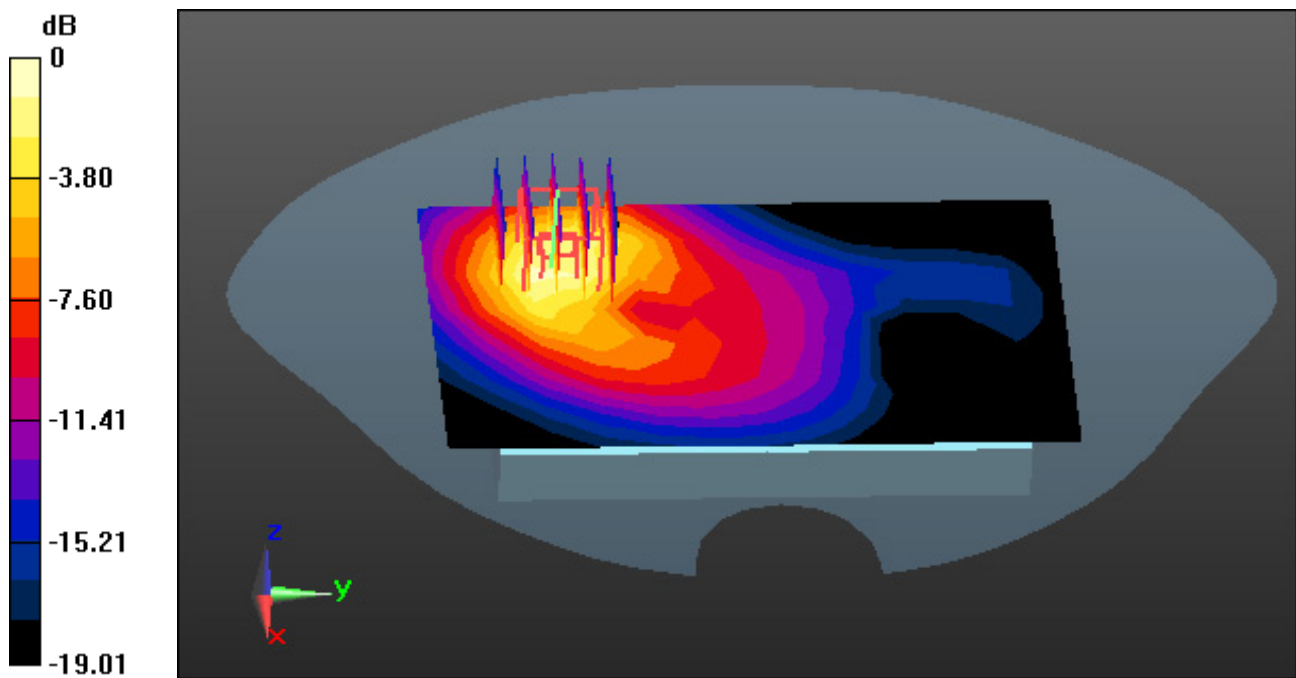
Area Scan (8x13x1): Measurement grid: dx=15mm, dy=15mm

Zoom Scan (5x5x7)/Cube 0: Measurement grid: dx=8mm, dy=8mm, dz=5mm

Power Drift = 0.05 dB

Peak SAR (extrapolated) = 1.43 W/kg

SAR(1 g) = 0.865 W/kg; SAR(10 g) = 0.485 W/kg



0 dB = 1.16 W/kg

DT&C Co., Ltd.

DUT: KB46; Type: Bar

Communication System: UID 0, WCDMA 850 (0); Frequency: 836.6 MHz; Duty Cycle: 1:1
Medium parameters used: $f = 836.6$ MHz; $\sigma = 0.894$ S/m; $\epsilon_r = 41.52$; $\rho = 1000$ kg/m³
Phantom section: Flat Section

DASY5 Configuration:

Probe: EX3DV4 - SN3866; ConvF(9.39, 9.39, 9.39); Calibrated: 5/28/2019; Electronics: DAE4 Sn1394
Sensor-Surface: 2mm (Mechanical Surface Detection)
Phantom: SAM-twin middle_2013_09_24; Type: QD000P40CD; Serial: 1782
Measurement SW: DASY52, Version 52.8 (8); SEMCAD X Version 14.6.10 (7331)

Test Date: 2019-06-27; Ambient Temp: 21.0; Tissue Temp: 21.4

1cm space from Body, Rear, WCDMA850 Ch. 4183, Ant Internal

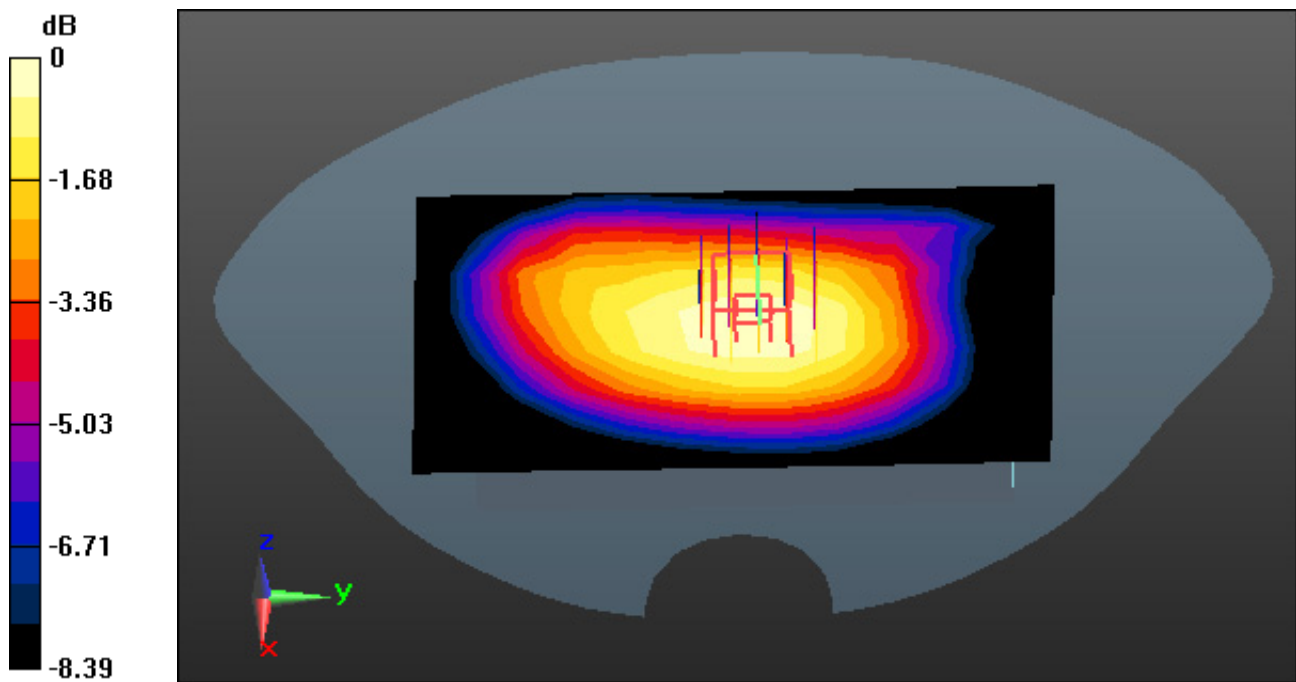
Area Scan (8x13x1): Measurement grid: dx=15mm, dy=15mm

Zoom Scan (5x5x7)/Cube 0: Measurement grid: dx=8mm, dy=8mm, dz=5mm

Power Drift = -0.01 dB

Peak SAR (extrapolated) = 0.787 W/kg

SAR(1 g) = 0.616 W/kg; SAR(10 g) = 0.459 W/kg



0 dB = 0.714 W/kg

DT&C Co., Ltd.

DUT: KB46; Type: Bar

Communication System: UID 0, LTE Band 17 FCC (0); Frequency: 710 MHz; Duty Cycle: 1:1
Medium parameters used: $f = 710 \text{ MHz}$; $\sigma = 0.87 \text{ S/m}$; $\epsilon_r = 42.985$; $\rho = 1000 \text{ kg/m}^3$
Phantom section: Flat Section

DASY5 Configuration:

Probe: EX3DV4 - SN3866; ConvF(9.85, 9.85, 9.85); Calibrated: 5/28/2019; Electronics: DAE4 Sn1394
Sensor-Surface: 2mm (Mechanical Surface Detection)
Phantom: SAM-twin middle_2013_09_24; Type: QD000P40CD; Serial: 1782
Measurement SW: DASY52, Version 52.8 (8); SEMCAD X Version 14.6.10 (7331)

Test Date: 2019-06-28; Ambient Temp: 21.2; Tissue Temp: 21.3

1cm space from Body, Rear, LTE Band 17 Ch. 23790, Ant Internal

Mode : BandWidth 10 MHz, QPSK, RB Size: 1

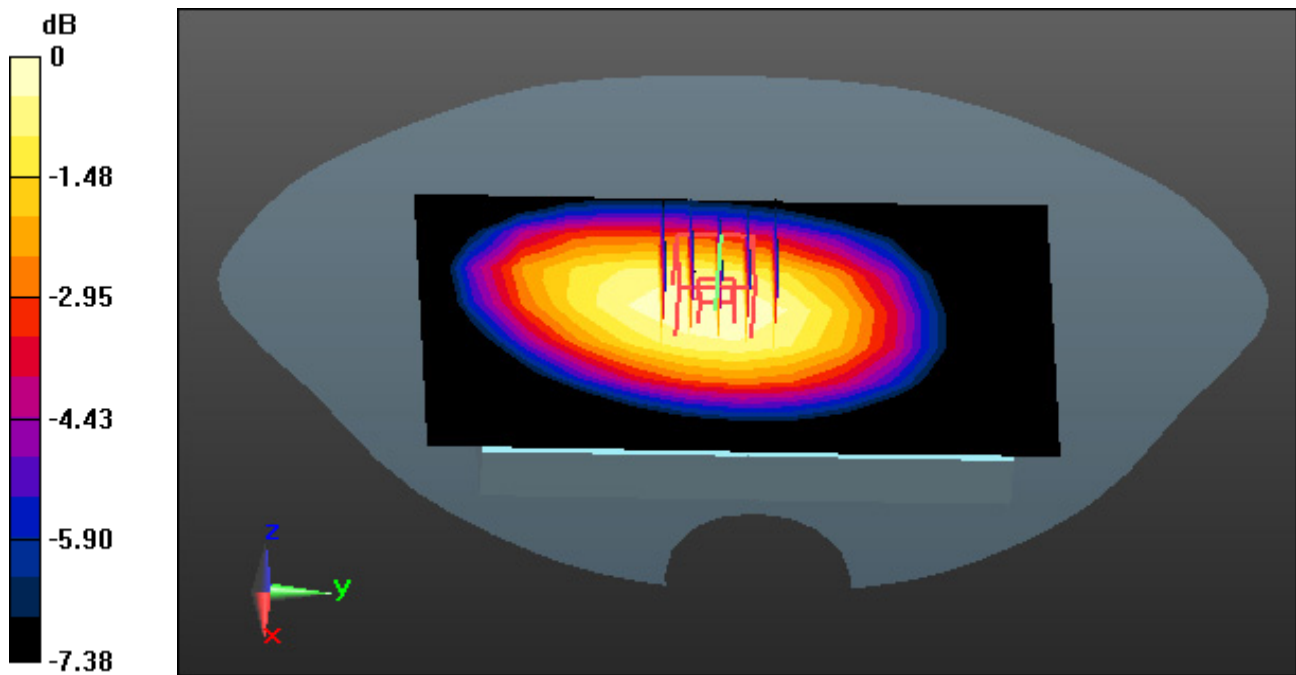
Area Scan (8x13x1): Measurement grid: $dx=15\text{mm}$, $dy=15\text{mm}$

Zoom Scan (5x5x7)/Cube 0: Measurement grid: $dx=8\text{mm}$, $dy=8\text{mm}$, $dz=5\text{mm}$

Power Drift = -0.01 dB

Peak SAR (extrapolated) = 0.700 W/kg

SAR(1 g) = 0.565 W/kg; SAR(10 g) = 0.433 W/kg



0 dB = 0.645 W/kg

DT&C Co., Ltd.

DUT: KB46; Type: Bar

Communication System: UID 0, 00_2.4 GHz W-LAN (0); Frequency: 2462 MHz; Duty Cycle: 1:1
Medium parameters used: $f = 2462$ MHz; $\sigma = 1.77$ S/m; $\epsilon_r = 38.617$; $\rho = 1000$ kg/m³
Phantom section: Flat Section

DASY5 Configuration:

Probe: EX3DV4 - SN3916; ConvF(7.66, 7.66, 7.66); Calibrated: 4/25/2019; Electronics: DAE4 Sn1392
Sensor-Surface: 2mm (Mechanical Surface Detection)
Phantom: SAM with CRP_2013_10_08_right; Type: QD000P40CD; Serial: TP:1785
Measurement SW: DASY52, Version 52.8 (8); SEMCAD X Version 14.6.10 (7331)

Test Date: 2019-07-01; Ambient Temp: 20.5; Tissue Temp: 20.4

1cm space from Body, Rear, 2.4G W-LAN(802.11b) Ch. 11, Ant Internal

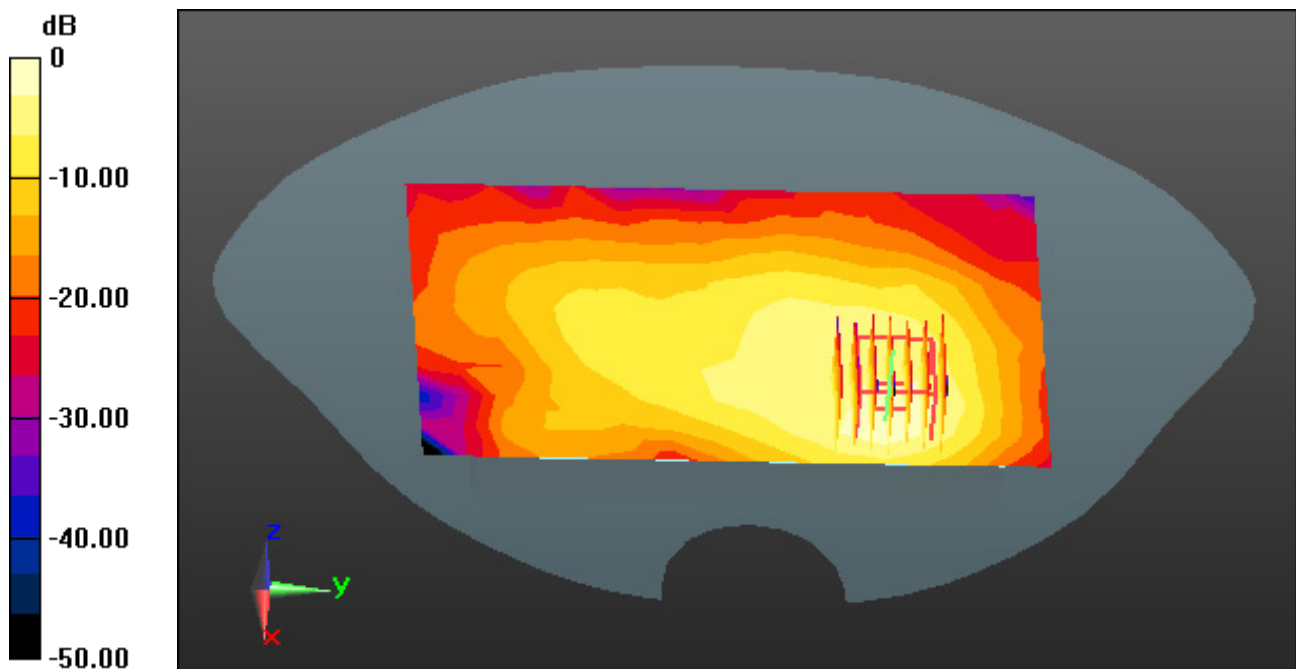
Area Scan (10x16x1): Measurement grid: dx=12mm, dy=12mm

Zoom Scan (7x7x7)/Cube 0: Measurement grid: dx=5mm, dy=5mm, dz=5mm

Drift = -0.10 dB

Peak SAR (extrapolated) = 0.315 W/kg

SAR(1 g) = 0.139 W/kg; SAR(10 g) = 0.063 W/kg



0 dB = 0.217 W/kg

DT&C Co., Ltd.

DUT: KB46; Type: Bar

Communication System: UID 0, W-LAN_5300 (0); Frequency: 5320 MHz; Duty Cycle: 1:1
Medium parameters used: $f = 5320$ MHz; $\sigma = 4.715$ S/m; $\epsilon_r = 34.933$; $\rho = 1000$ kg/m³
Phantom section: Flat Section

DASY5 Configuration:

Probe: EX3DV4 - SN3916; ConvF(4.94, 4.94, 4.94); Calibrated: 4/25/2019; Electronics: DAE4 Sn1392
Sensor-Surface: 1.4mm (Mechanical Surface Detection)
Phantom: SAM with CRP_2016_07_22_middle; Type: QD000P40CD; Serial: TP:1786
Measurement SW: DASY52, Version 52.8 (8); SEMCAD X Version 14.6.10 (7331)

Test Date: 2019-07-04; Ambient Temp: 20.9; Tissue Temp: 21.6

1cm space from Body, Rear, 5.3G W-LAN(802.11a) Ch. 64, Ant Internal

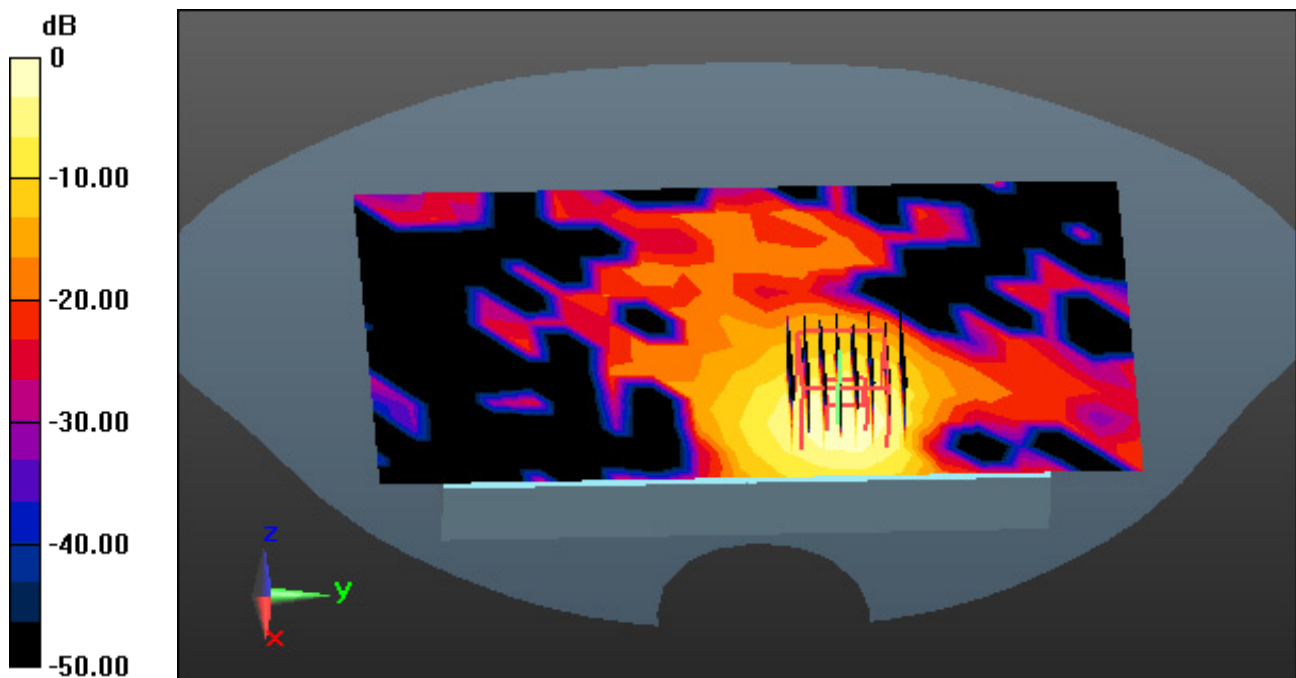
Area Scan (12x20x1): Measurement grid: dx=10mm, dy=10mm

Zoom Scan (8x8x7)/Cube 0: Measurement grid: dx=4mm, dy=4mm, dz=1.4mm, Graded Ratio: 1.4

Power Drift = 0.01 dB

Peak SAR (extrapolated) = 0.633 W/kg

SAR(1 g) = 0.157 W/kg; SAR(10 g) = 0.054 W/kg



0 dB = 0.366 W/kg

DT&C Co., Ltd.

DUT: KB46; Type: Bar

Communication System: UID 0, W-LAN_5500 (0); Frequency: 5700 MHz; Duty Cycle: 1:1
Medium parameters used: $f = 5700$ MHz; $\sigma = 5.067$ S/m; $\epsilon_r = 34.672$; $\rho = 1000$ kg/m³
Phantom section: Flat Section

DASY5 Configuration:

Probe: EX3DV4 - SN3916; ConvF(4.75, 4.75, 4.75); Calibrated: 4/25/2019; Electronics: DAE4 Sn1392
Sensor-Surface: 1.4mm (Mechanical Surface Detection)
Phantom: SAM with CRP_2016_07_22_middle; Type: QD000P40CD; Serial: TP:1786
Measurement SW: DASY52, Version 52.8 (8); SEMCAD X Version 14.6.10 (7331)

Test Date: 2019-07-05; Ambient Temp: 21.0; Tissue Temp: 21.2

1cm space from Body, Rear, 5.6G W-LAN(802.11a) Ch. 140, Ant Internal

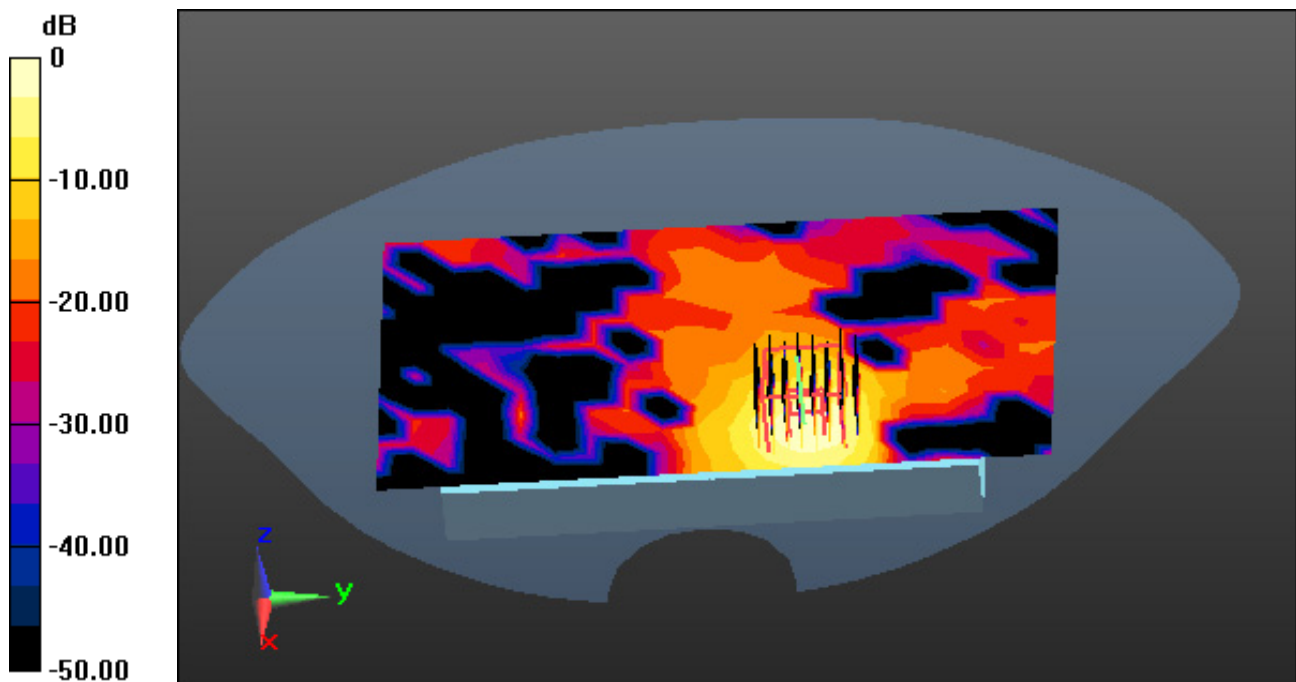
Area Scan (12x20x1): Measurement grid: dx=10mm, dy=10mm

Zoom Scan (8x8x7)/Cube 0: Measurement grid: dx=4mm, dy=4mm, dz=1.4mm

Power Drift = -0.03 dB

Peak SAR (extrapolated) = 0.746 W/kg

SAR(1 g) = 0.185 W/kg; SAR(10 g) = 0.063 W/kg



0 dB = 0.432 W/kg