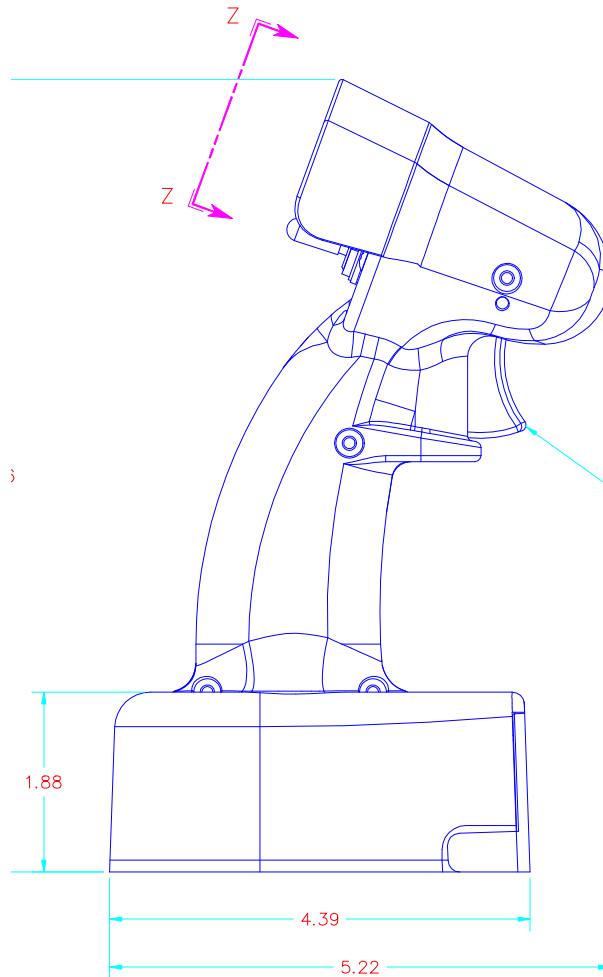
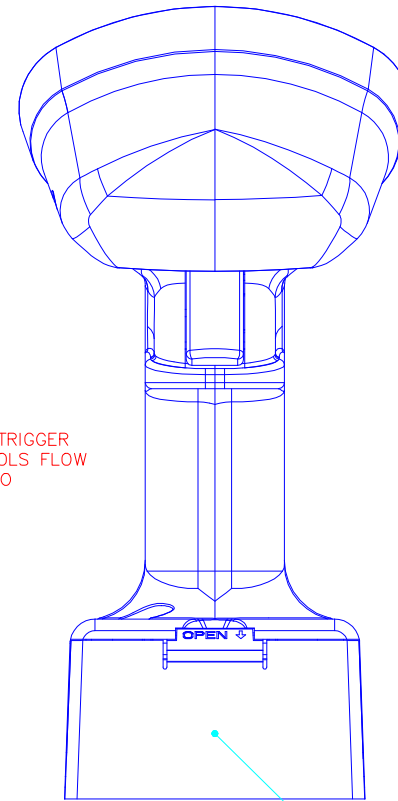


REV.	DESCRIPTION	DA



PROPORTIONAL TRIGGER
TRIGGER CONTROLS FLOW
PULL TRIGGER TO
INCREASE FLOW



BATTERY COMPARTMENT
OPEN COVER TO ACCESS 9 VOLT
BATTERY (NOT SUPPLIED BY P-Q)

SWITCH POSITIONING
SWITCHES A, B, C & D ARE
PROVIDED IN ALL UNITS

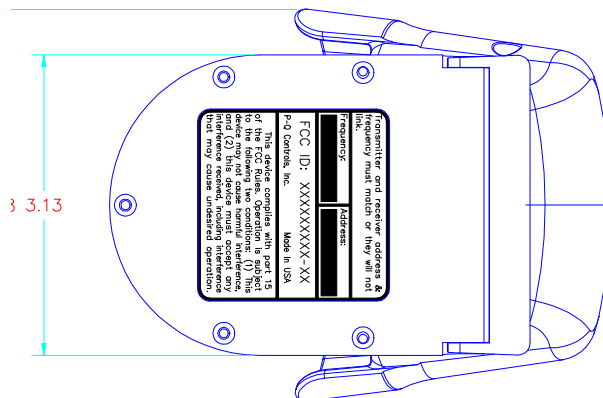
SWITCHES E & F ARE OPTIONAL
AND ANY OR ALL MAY BE ADDED

MODEL SPECIFICATION #: RFTXA-418G-XXX

RADIO FREQUENCY RANGE
418MHz.

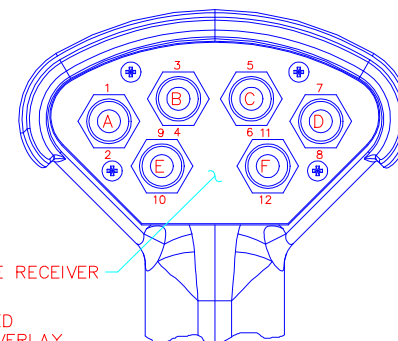
SPECIAL CONFIGURATION #
P-Q WILL ASSIGN THIS NUMBER

LIST SWITCHES TO BE OMITTED




NUMBERS INDICATE RECEIVER
OUTPUT CHANNEL

AREA IS UNMARKED
CUSTOM DECAL OVERLAY
IS AVAILABLE
ORDER SEPARATELY



VIEW Z

NOTES: 1) THE TRANSMITTER IS POWERED BY 1 - 9V ALKALINE BATTERY
2) THE ADDRESS & FREQUENCY OF THE TRANSMITTER ARE FACTORY PRESET. THE RECEIVER ADDRESS & FREQUENCY MUST MATCH THEY WILL NOT LINK.
THE ADDRESS, WHICH IS ALSO THE SERIAL NUMBER, CAN BE FOUND ON BACK SIDE OF THE TRANSMITTER AND ALSO INSIDE THE BATTERY COMPARTMENT.

 WARNING: P-Q Controls, Inc. products are intended as general purpose switches. They are NOT safety devices and as with any general purpose devices, malfunctions may occur. If P-Q products are used to initiate an operation where false operation could be dangerous, POINT-OF-OPERATION GUARDING DEVICES must be installed and maintained to meet all appropriate OSHA and ANSI machine safety standards. P-Q Controls, Inc. shall not accept responsibility for installation, application or safety of systems.		P-Q Controls, Inc. 95 Dolphin Rd. Bristol, CT 06010 PHONE: (860) 583-6994 FAX: (860) 583-6011	DWG. NO. C-10306
			SHEET SCALE 1:
RADIO TRANSMITTER, GRIP 418MHz			
DRAFTSMAN JCH	CHECK	PROJECT ENGINEER	DATE 07-31-9