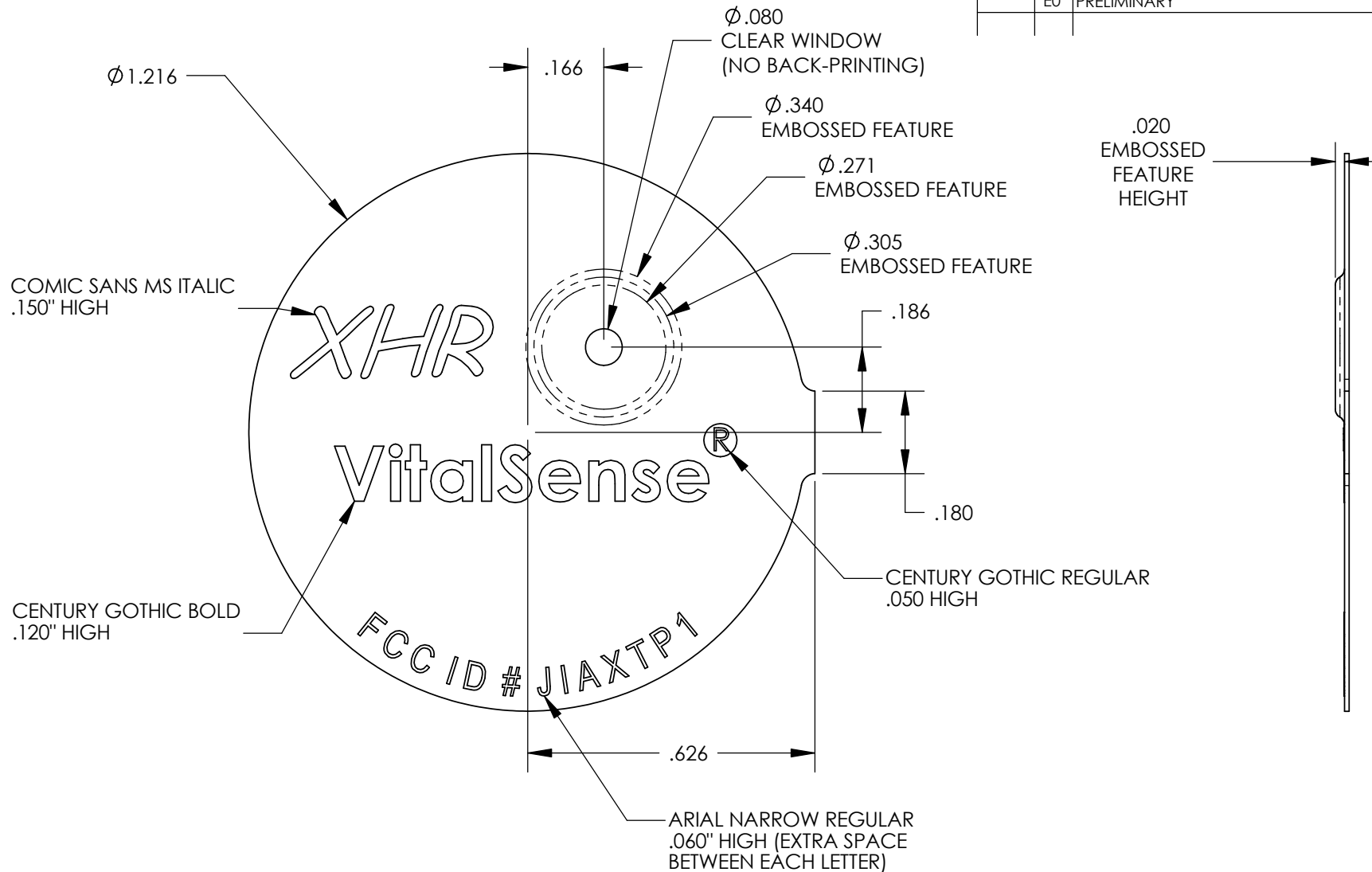


		REVISIONS			
ECN #	REV.	DESCRIPTION		DATE	APPROVED
	E0	PRELIMINARY		7/14/04	TM



NOTES U.O.S.:

1. MATERIAL: .005" THICK CLEAR VELVET LEXAN
WITH 3M 468MP HIGH PERFORMANCE ADHESIVE ON BACK SIDE
 2. SCREEN PRINTING (ON BACK SIDE)
- COLORS:
BACKGROUND: PANTONE COOL GRAY 1 C
TEXT & GRAPHICS: PANTONE 255 C (PURPLE)

THE INFORMATION CONTAINED IN THIS DRAWING IS THE SOLE PROPERTY OF MINI MITTER CO., INC. AND REPRESENTS A PROPRIETARY ARTICLE IN WHICH MINI MITTER RETAINS ANY AND ALL PATENT AND OTHER RIGHTS, INCLUDING EXCLUSIVE RIGHTS OF USE AND/OR MANUFACTURE, AND/OR SALE. POSSESSION OF THIS PRINT DOES NOT CONVEY ANY PERMISSION TO REPRODUCE PRINT OR MANUFACTURE ARTICLE(S) SHOWN HEREIN. ANY REPRODUCTION IN PART OR AS A WHOLE WITHOUT THE WRITTEN PERMISSION OF MINI MITTER IS PROHIBITED. SPECIFICATION CANNOT BE CHANGED WITHOUT APPROVAL OF MINI MITTER.

UNLESS OTHERWISE SPECIFIED: DIMENSIONS ARE IN INCHES TOLERANCES: THREE PLACE DECIMAL $\pm 0.010"$ TWO PLACE DECIMAL $\pm 0.020"$ ANGULAR: \pm BEND: \pm	
MATERIAL	--
FINISH	--

		MINI MITTER CO., INC. 20300 Empire Avenue, Bldg. B-3 Bend, OR 97701	
		TITLE: LABEL, TINMAN	
DRAWN	Tom Meyer	DATE	7/14/04
CHECKED			
ENG APPR.			
COMMENTS:		SCALE: 1:1	USED ON: Tinman
DO NOT SCALE DRAWING		SHEET 1 OF 1	REV. E0

