

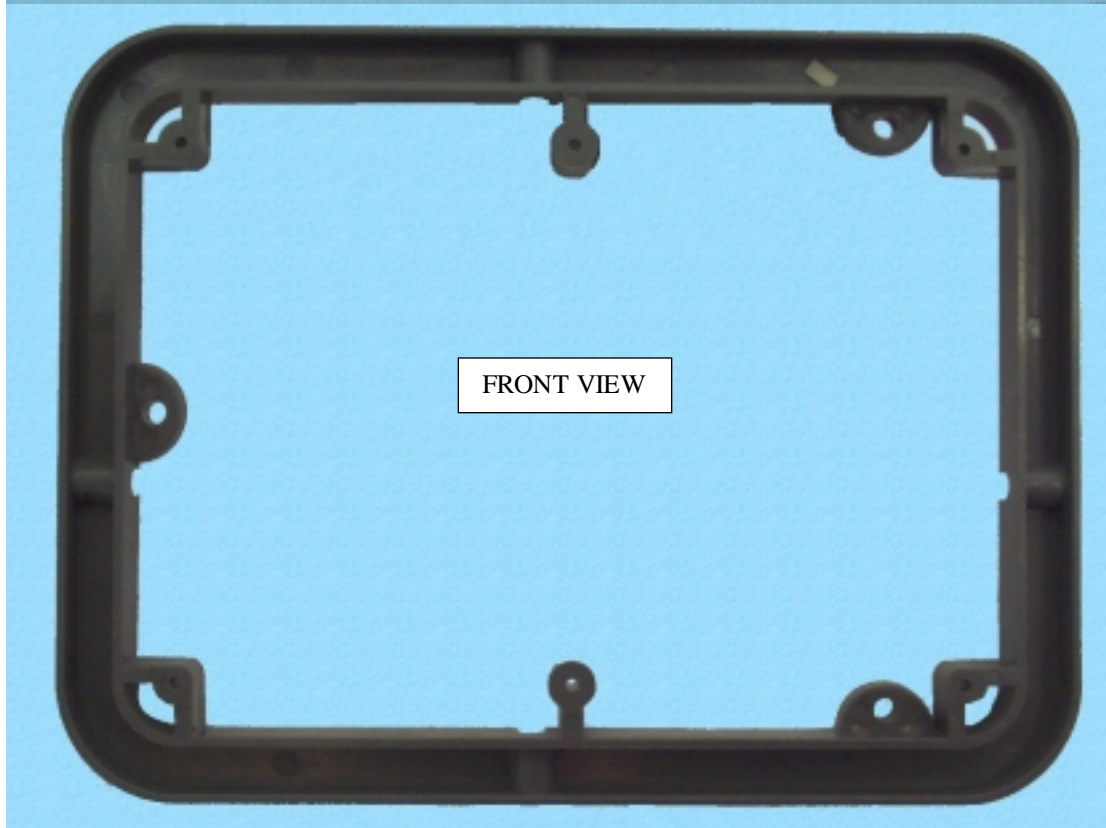
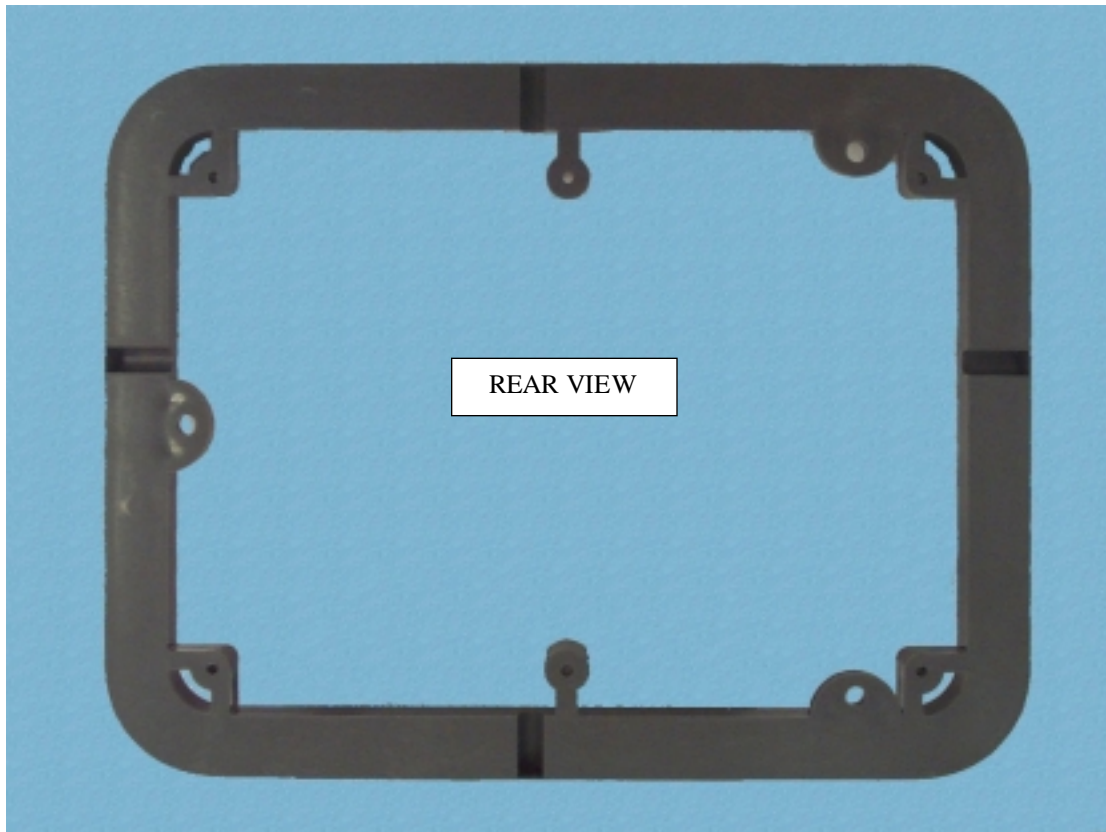
Census Reader – Front



Census Reader – Back

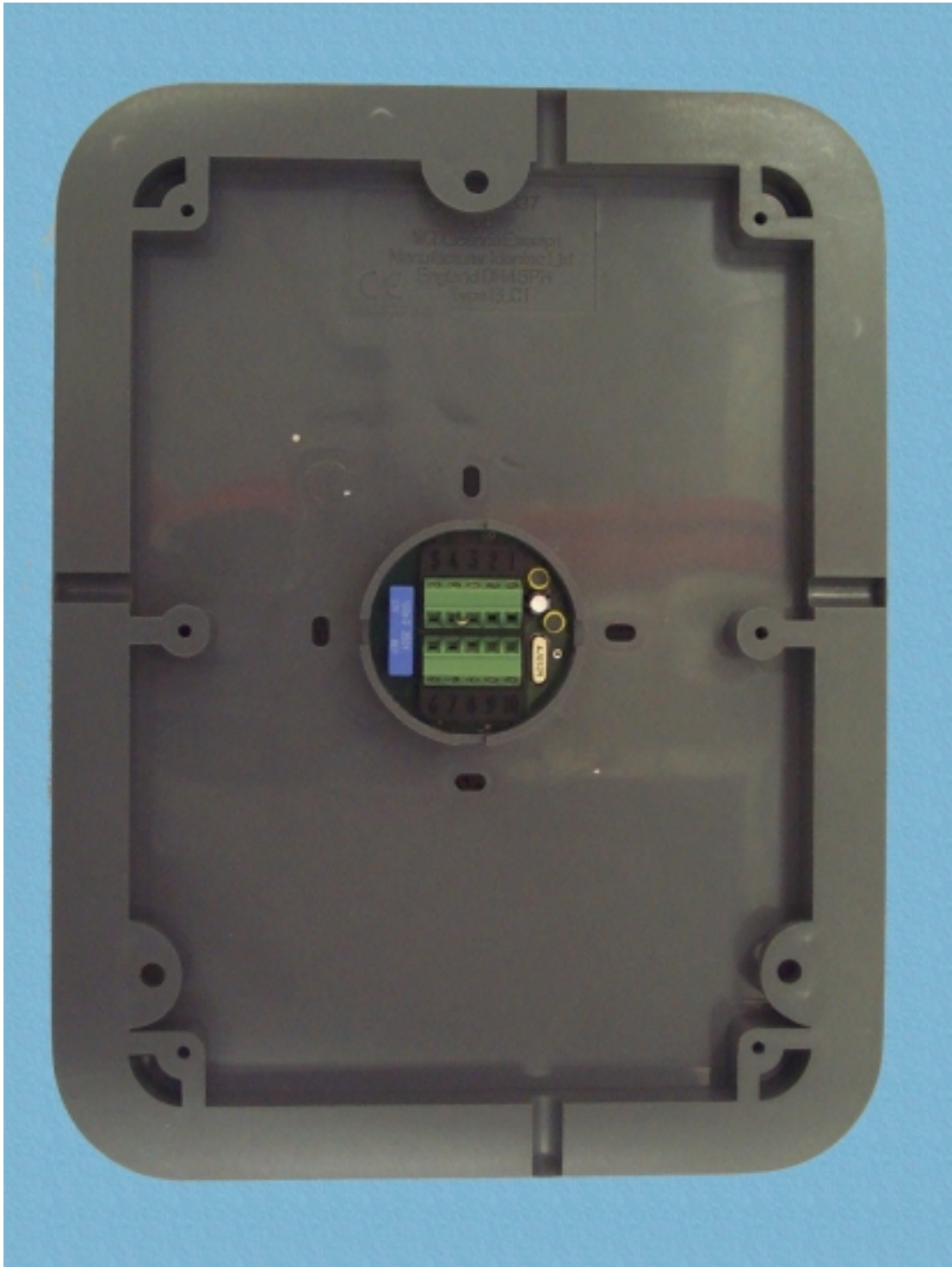


Census Reader – Spacer



This image shows the internal components of a mobile phone, viewed from the back. The battery cover is removed, revealing the internal circuitry. A large, circular, red antenna is visible at the top. Below it, a green printed circuit board (PCB) is mounted, featuring various electronic components, including a central processor, memory chips, and other integrated circuits. The PCB is secured by four screws. The battery cover is a dark grey plastic frame with rounded corners, featuring a copper-colored antenna trace along the inner edge. The text "20 WTR/01" and "WTR/01" is visible on the bottom right of the cover.

Census Reader – Back (Non-Epoxyed)



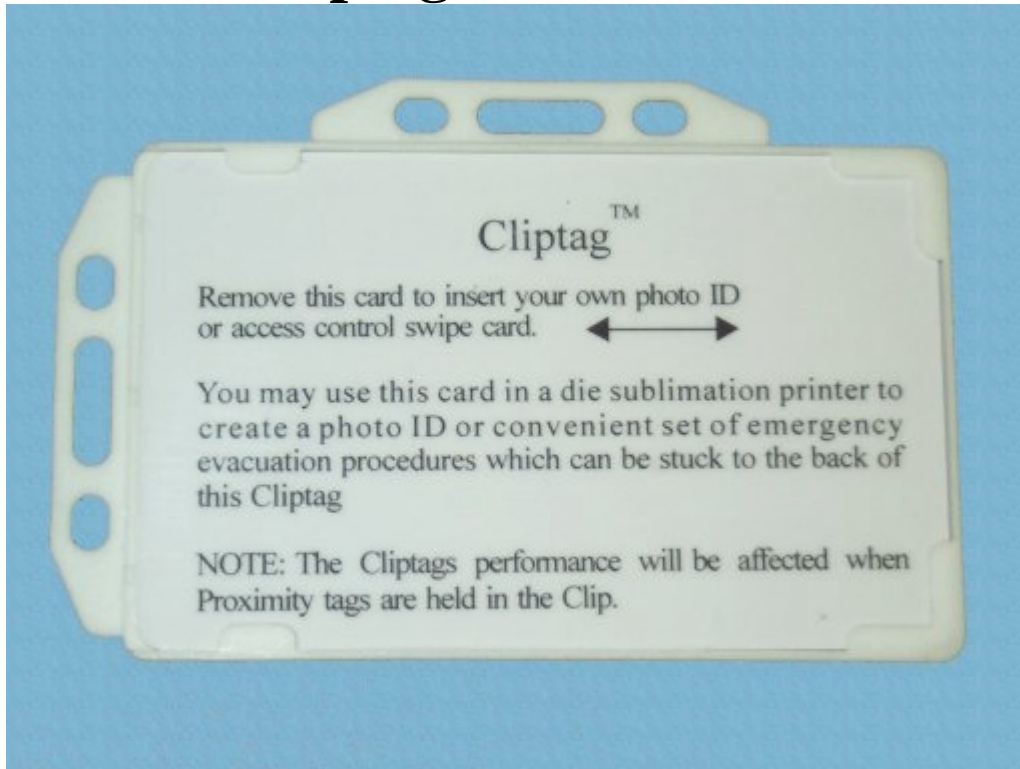
Census Reader – Label



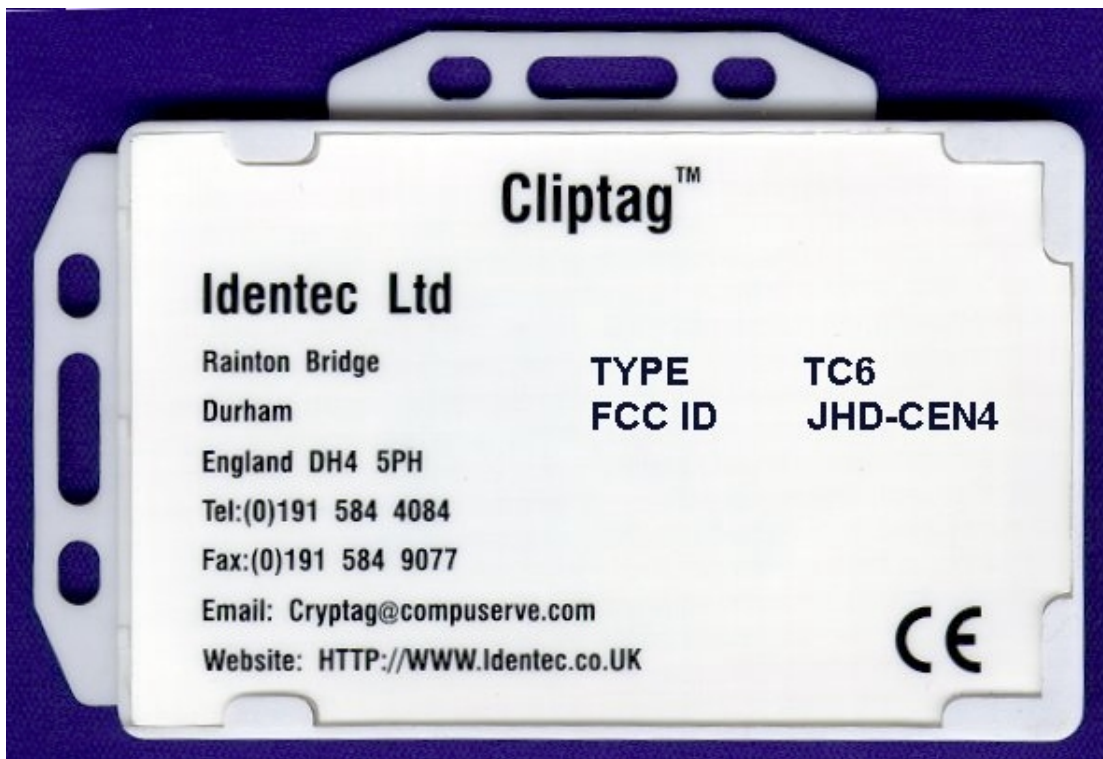
Cliptag– Front & Back



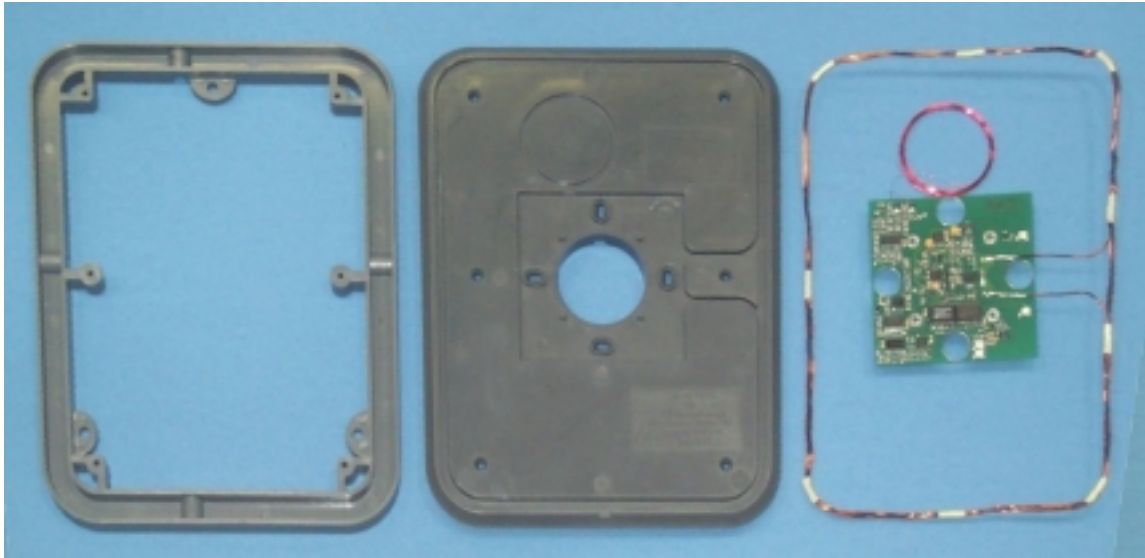
Cliptag with ISO Card



Cliptag with Inner label (ISO card removed)



Census Reader - Exploded Front View



Census Reader - Exploded Back

