

Microwave Antenna, SlimLine Standard, Non-press, Single Polarized, 4 ft
5.25 - 5.85 GHz

Product Description

(Local product. Only in North America available. For further information contact Sales in North America)

Solid Microwave Parabolic Ant, SlimLine Standard, Non-press,
Single Polarized, 4 ft



Antenna

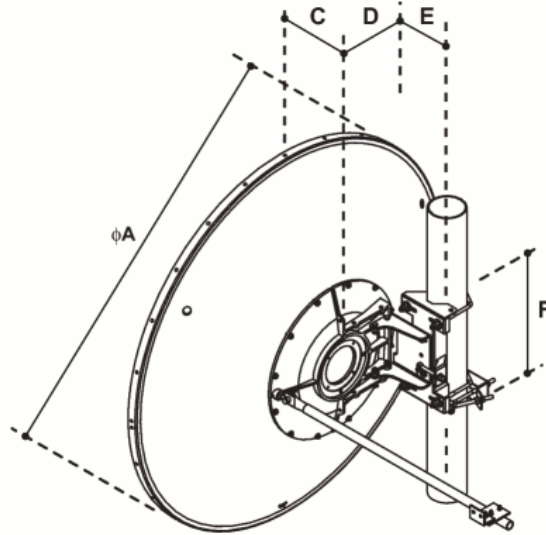
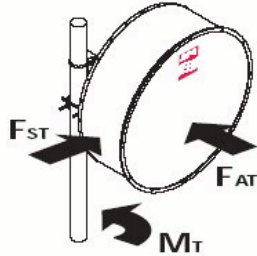
Technical Features

| | |
|---|-------------------------|
| Product Type | Point to point antennas |
| Frequency, GHz | 5.25 - 5.85 |
| Diameter, ft (m) | 4 (1.2) |
| Profile | SlimLine |
| Performance | Standard |
| Polarization | Single |
| Regulatory Compliance | Standard, FCC |
| 3dB beamwidth, (degrees) | 3.0 |
| Antenna Input | N Female |
| Low Band Gain, dBi | 33.9 |
| Mid Band Gain, dBi | 34.4 |
| High Band Gain, dBi | 34.9 |
| F/B Ratio, dB | 48 |
| XPD, dB | 30 |
| Max VSWR / R L, dB | 1.50 / 14.0 |
| Elevation Adjustment, degrees | ± 15 |
| Azimuth Adjustment, degrees | ± 5 |
| Polarization Adjustment, degrees | ± 5 |
| Radome | Optional |
| Antenna color | White |
| Mounting Pipe Diameter minimum, mm (in) | 114 (4.5) |
| Mounting Pipe Diameter maximum, mm (in) | 114 (4.5) |
| Approximate Weight, kg (lb) | 30 (66) |
| Survival Windspeed, km/h (mph) | 200 (125) |
| Operational Windspeed, km/h (mph) | 190 (118) |

All information contained in the present datasheet is subject to confirmation at time of ordering

Microwave Antenna, SlimLine Standard, Non-press, Single Polarized, 4 ft
5.25 - 5.85 GHz

| | |
|---|-------------|
| F_{ST} Side force max. at 110 km/h (68 mph), N (lb) | 390 (87) |
| F_{AT} Axial force max. at 110 km/h (68 mph), N (lb) | 1310 (293) |
| M Torque max. at 110 km/h (68 mph), Nm (ft lb) | 460 (342) |
| F_{ST} Side force max. at 200 km/h (125 mph), N (lb) | 1280 (286) |
| F_{AT} Axial force max. at 200 km/h (125 mph), N (lb) | 4345 (973) |
| M Torque max. at 200 km/h (125 mph), Nm (ft lb) | 1500 (1120) |



All dimensions in mm (in)

| ØA | B | C | ØD for mounting pipe diam. | | E | F |
|----------------|---|-----------|----------------------------|------------|----------|----------------------|
| | | | 219 (8.5) | 114 (4.5) | 89 (3.5) | 51 (2.0) |
| 1262 (49.7) | | 248 (9.8) | | 365 (14.4) | | 115 (4.5) 365 (14.4) |

Notes

includes 1 sway bar (1.35 m x Ø27 mm)

All information contained in the present datasheet is subject to confirmation at time of ordering