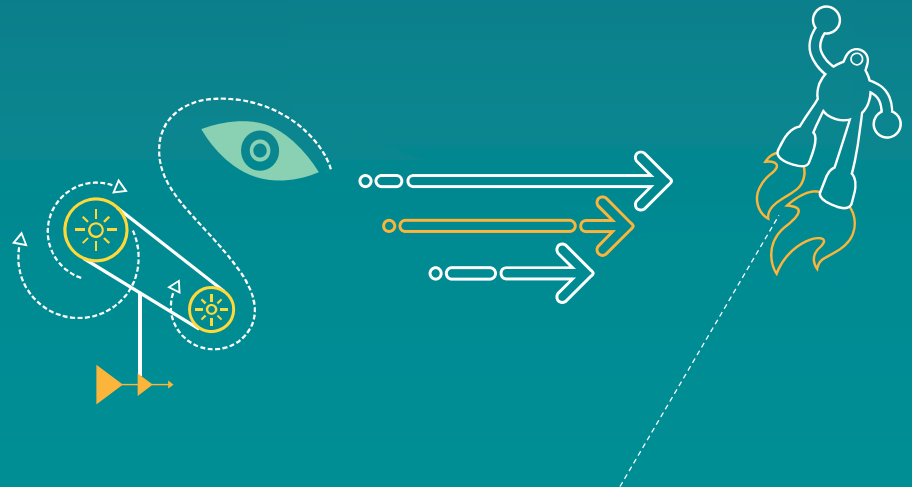

MTP9900 LAA FCC Internal PHOTOS



Qualcomm Technologies, Inc.

80-P7567-6 Rev. A



Qualcomm is a trademark of Qualcomm Incorporated, registered in the United States and other countries. Other product and brand names may be trademarks or registered trademarks of their respective owners.

This technical data may be subject to U.S. and international export, re-export, or transfer ("export") laws. Diversion contrary to U.S. and international law is strictly prohibited.

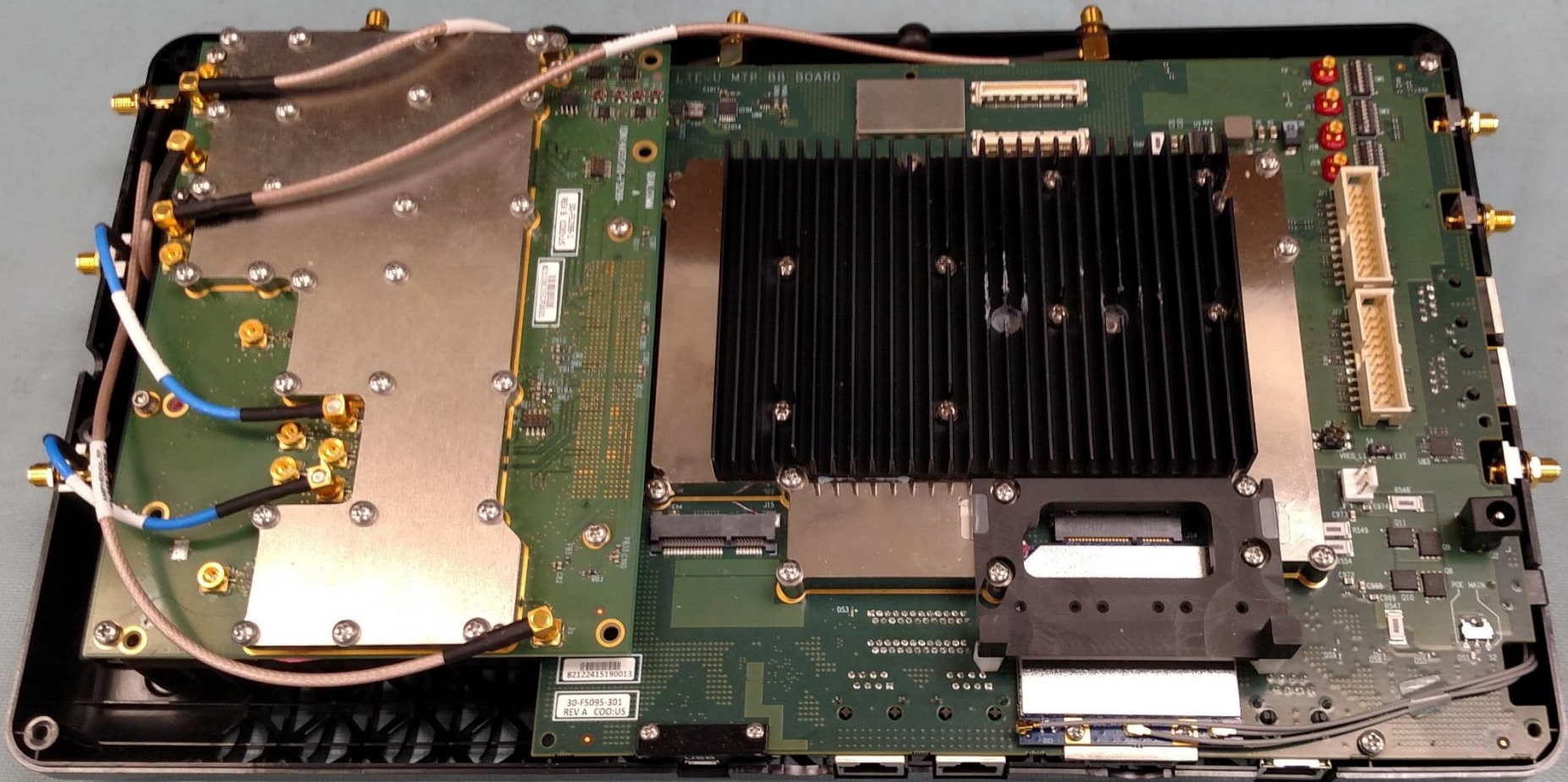
Qualcomm Technologies, Inc.
5775 Morehouse Drive
San Diego, CA 92121
U.S.A.

© 2016 Qualcomm Technologies, Inc. and/or its affiliated companies. All rights reserved.

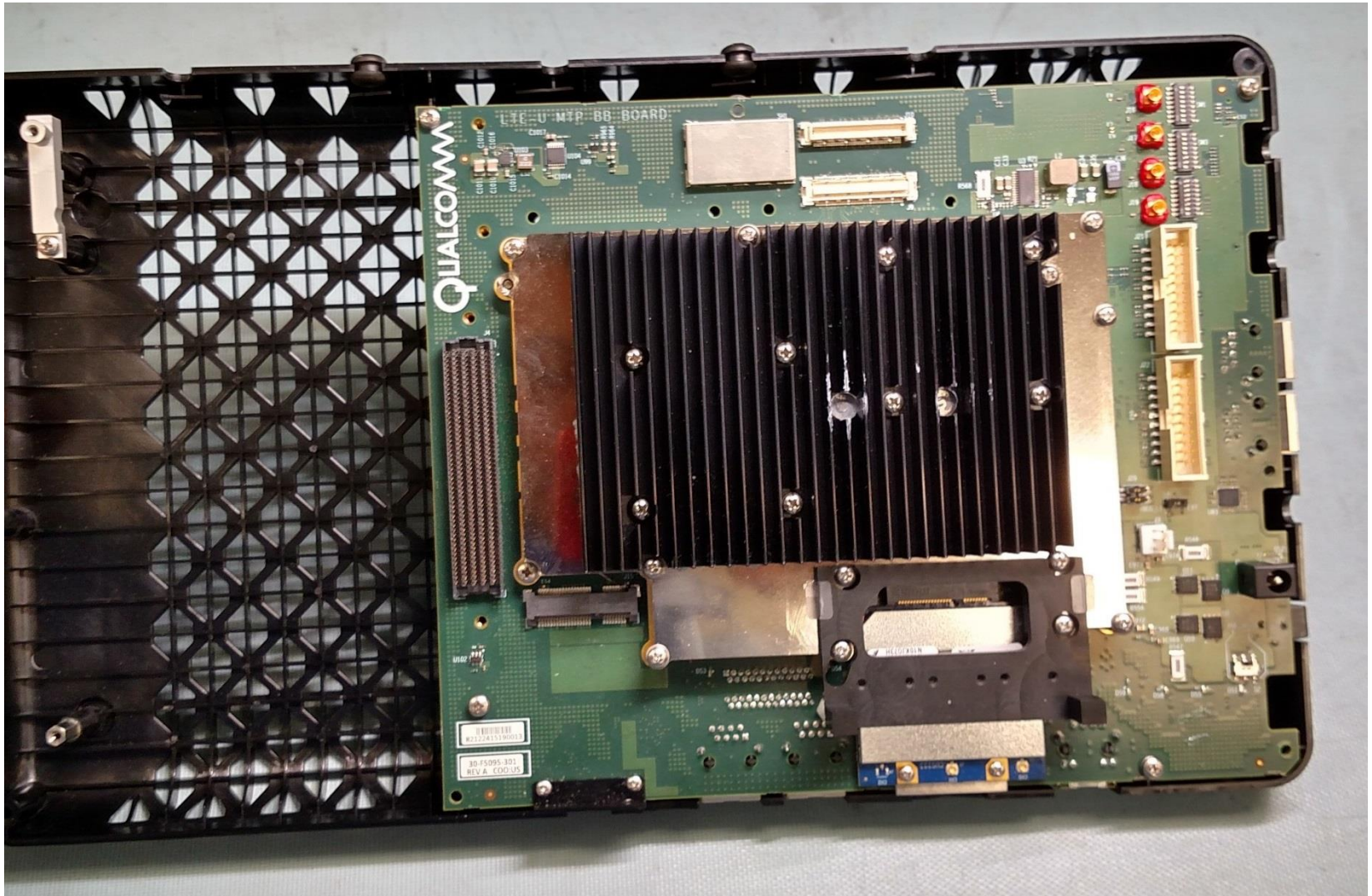
Revision History

Revision	Date	Description
A	July 2016	Initial release

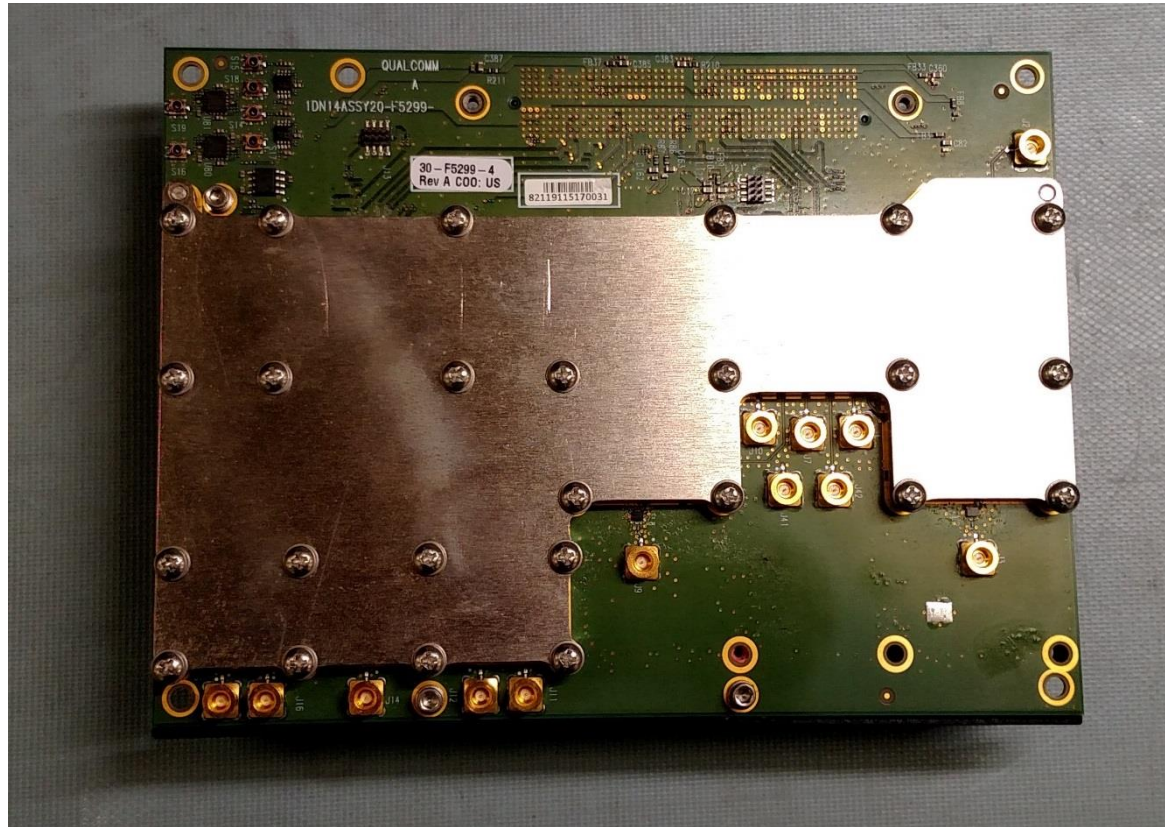
MTP9900 – Top Internal View



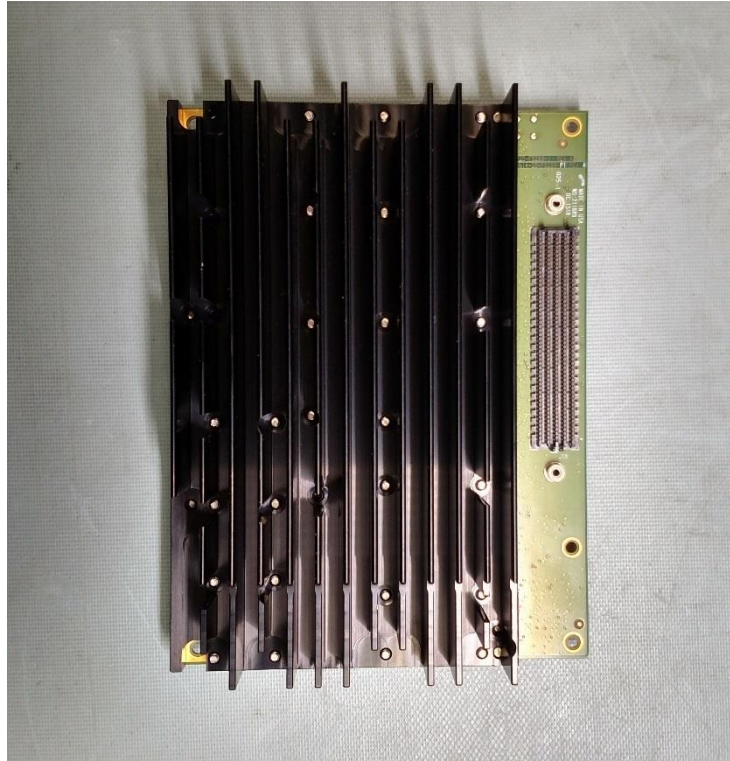
MTP9900 – Bottom Internal View



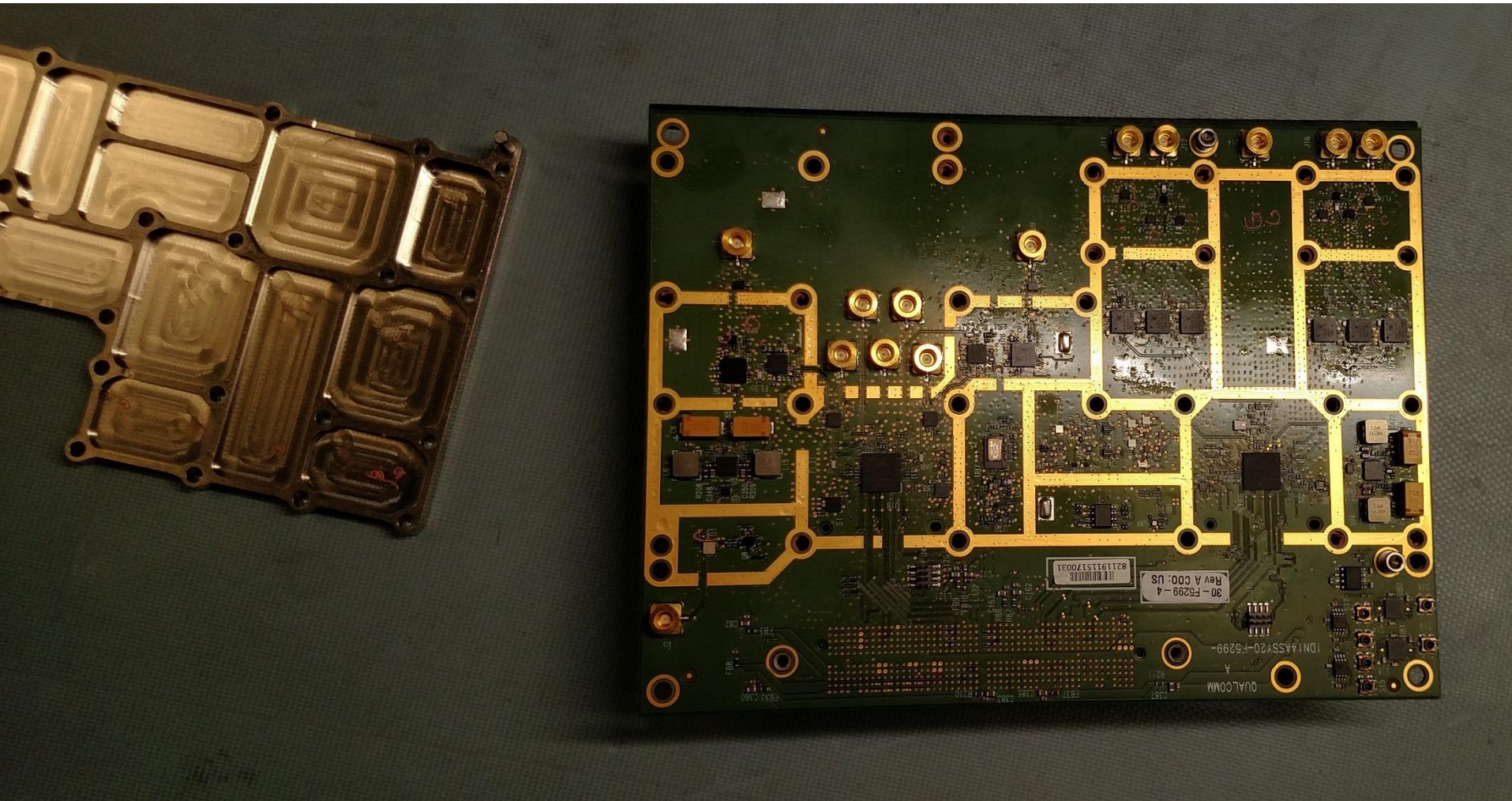
RF Card with Shield and Heatsink (1 of 2)



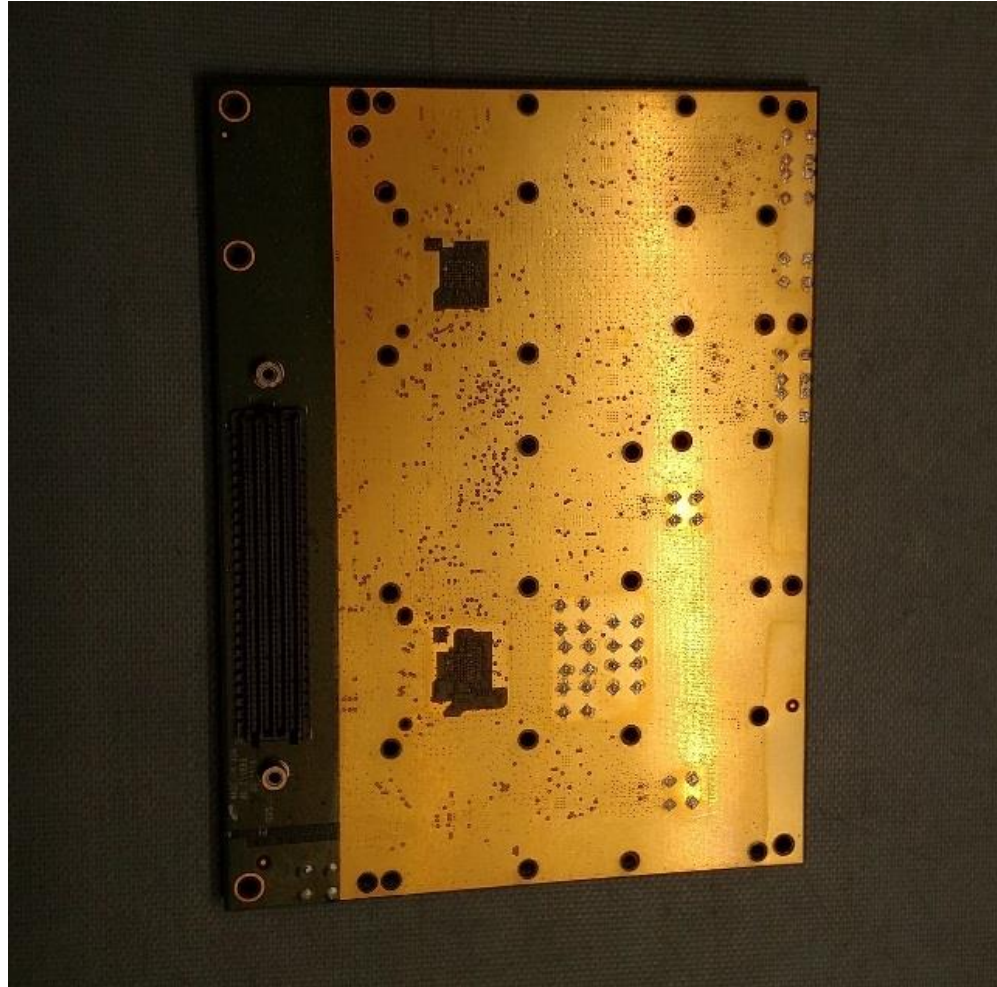
RF Card with Shield and Heatsink (2 of 2)



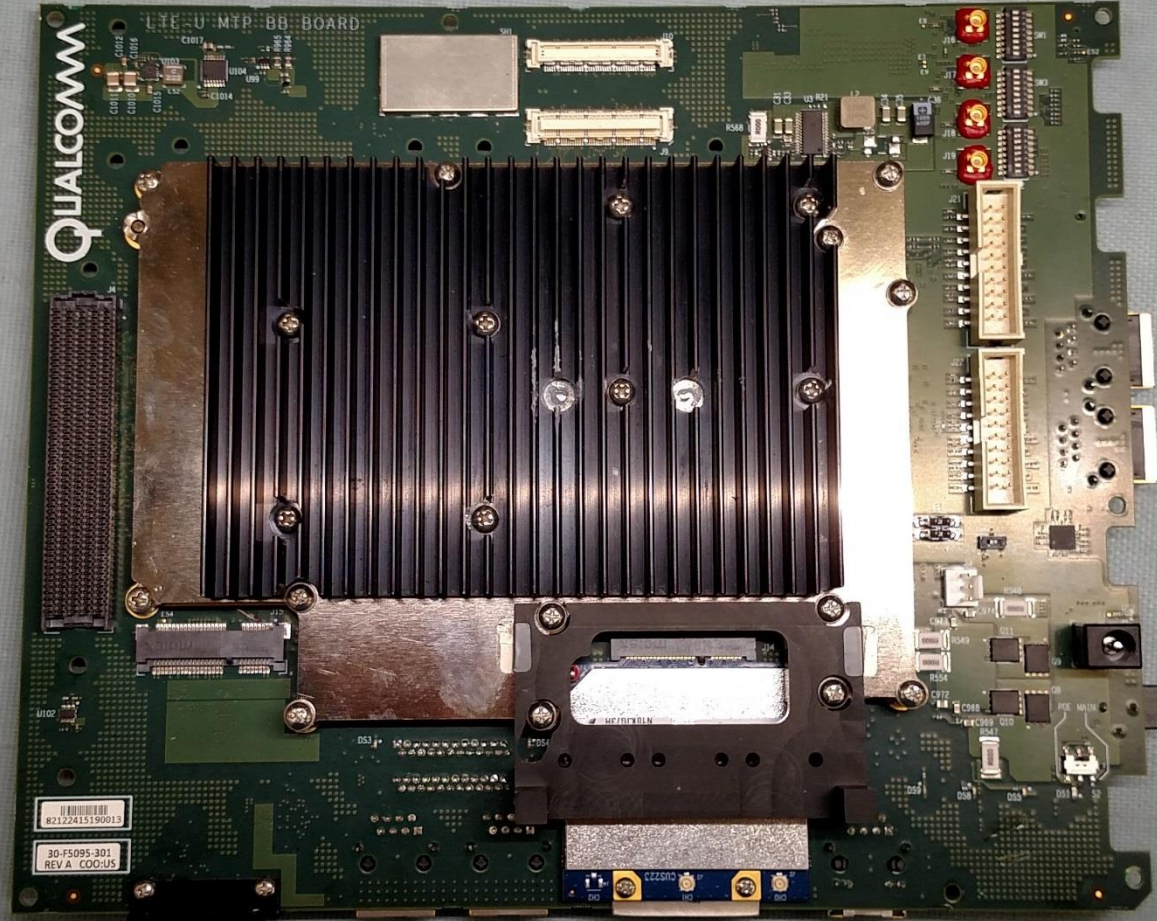
RF Board (1 of 2)



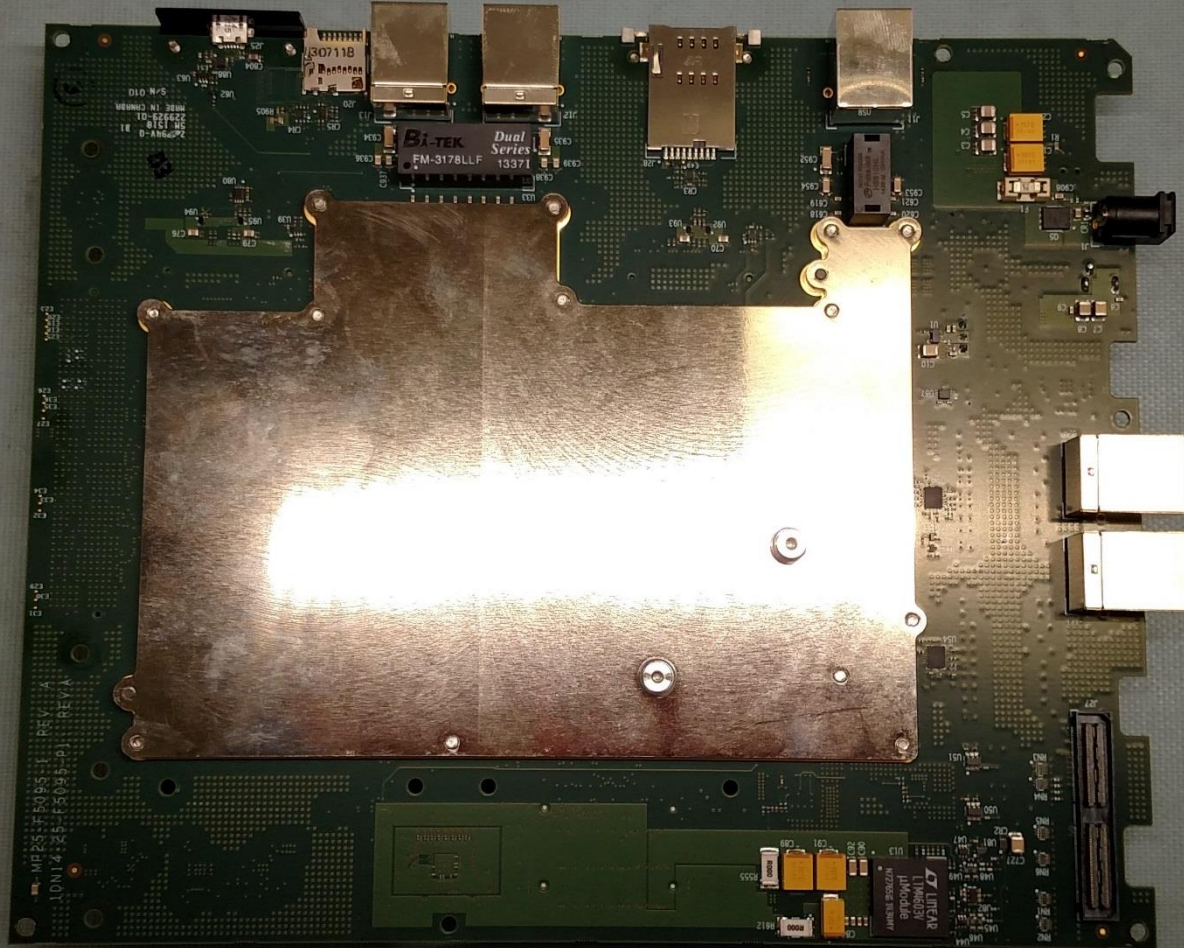
RF Board (2 of 2)



Baseband Board with Shield and Heatsink (1 of 2)



Baseband Board with Shield and Heatsink (2 of 2)



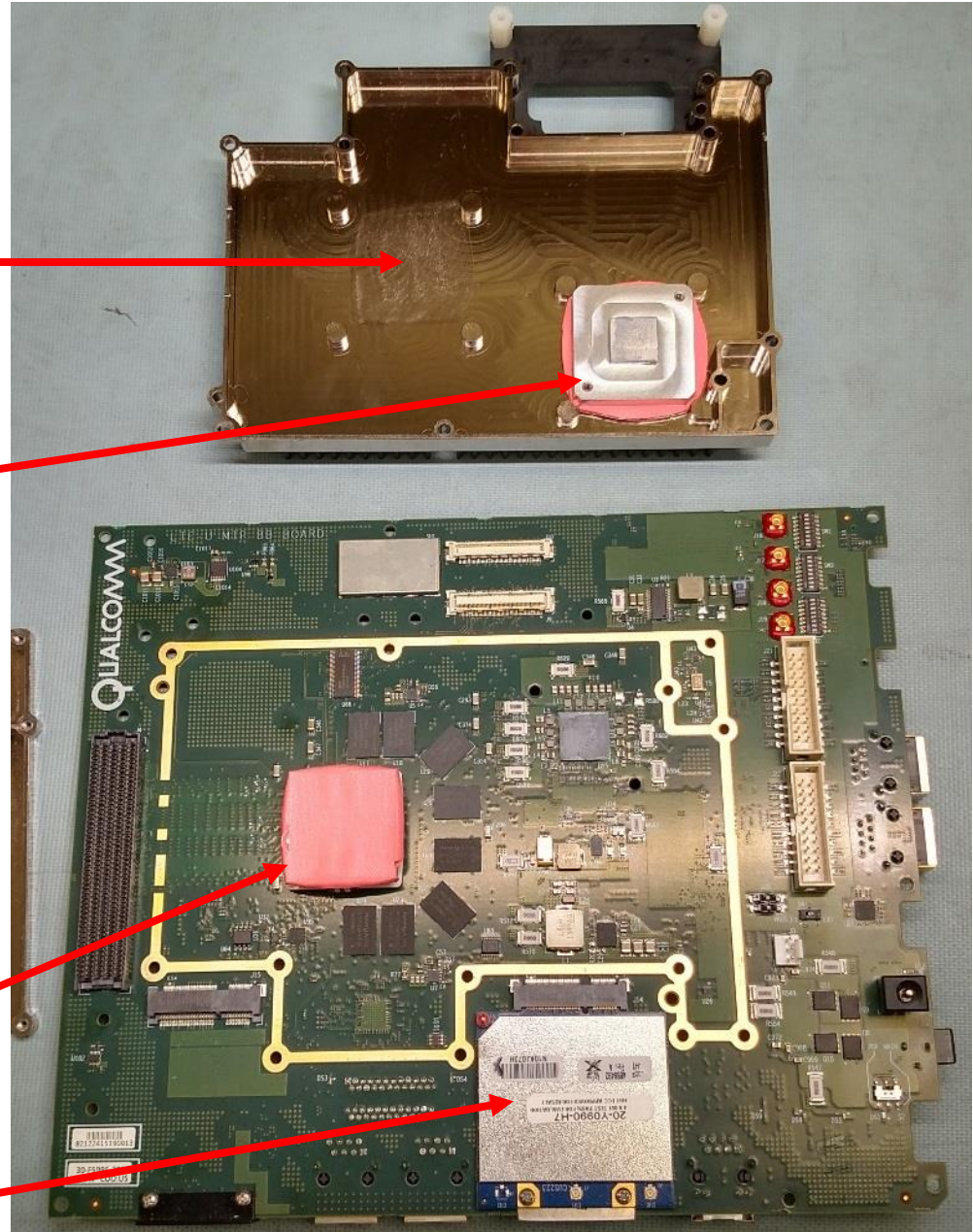
Baseband Board without Shield and Heatsink (1 of 2)

Top Shield

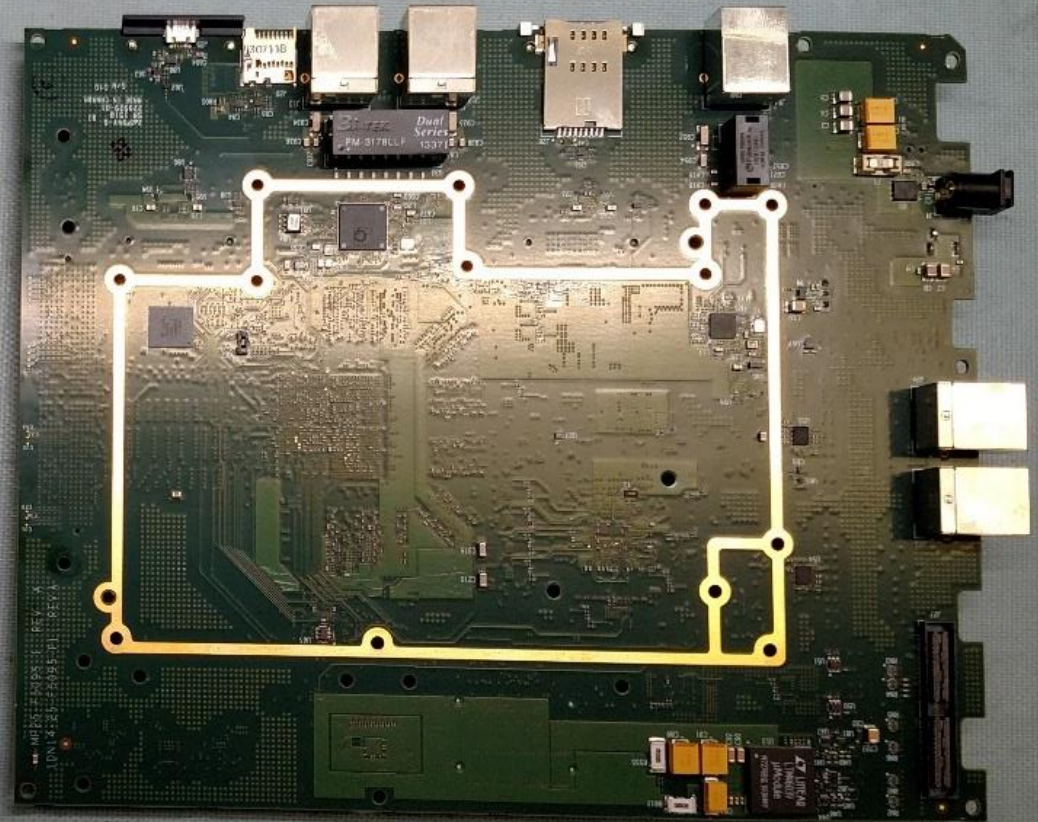
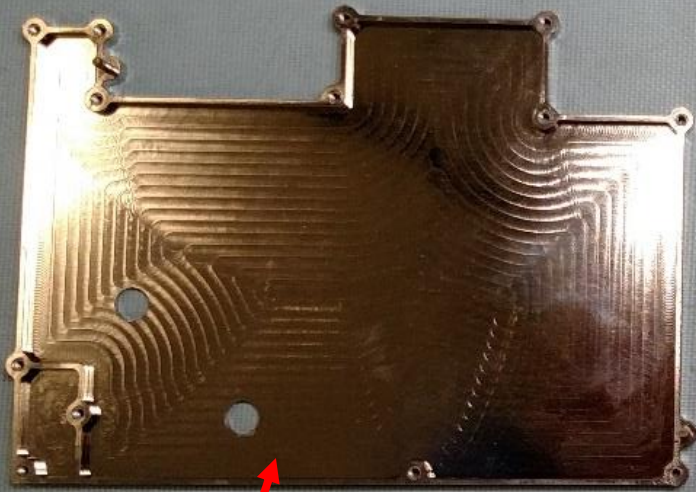
Heat Spreader and TIM

Heat Spreader and TIM

Wi-Fi Board

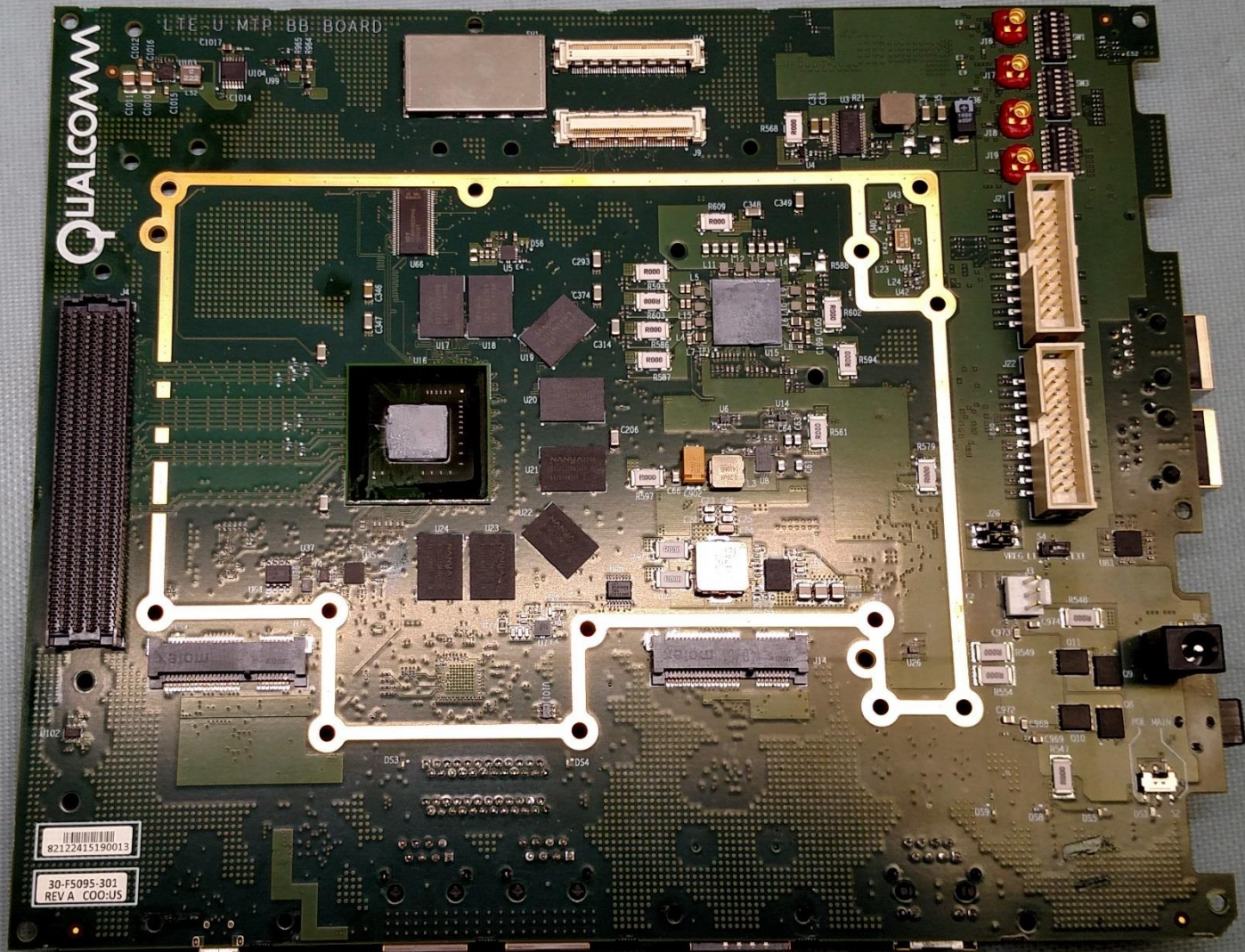


Baseband Board without Shield and Heatsink (2 of 2)



Bottom Shield

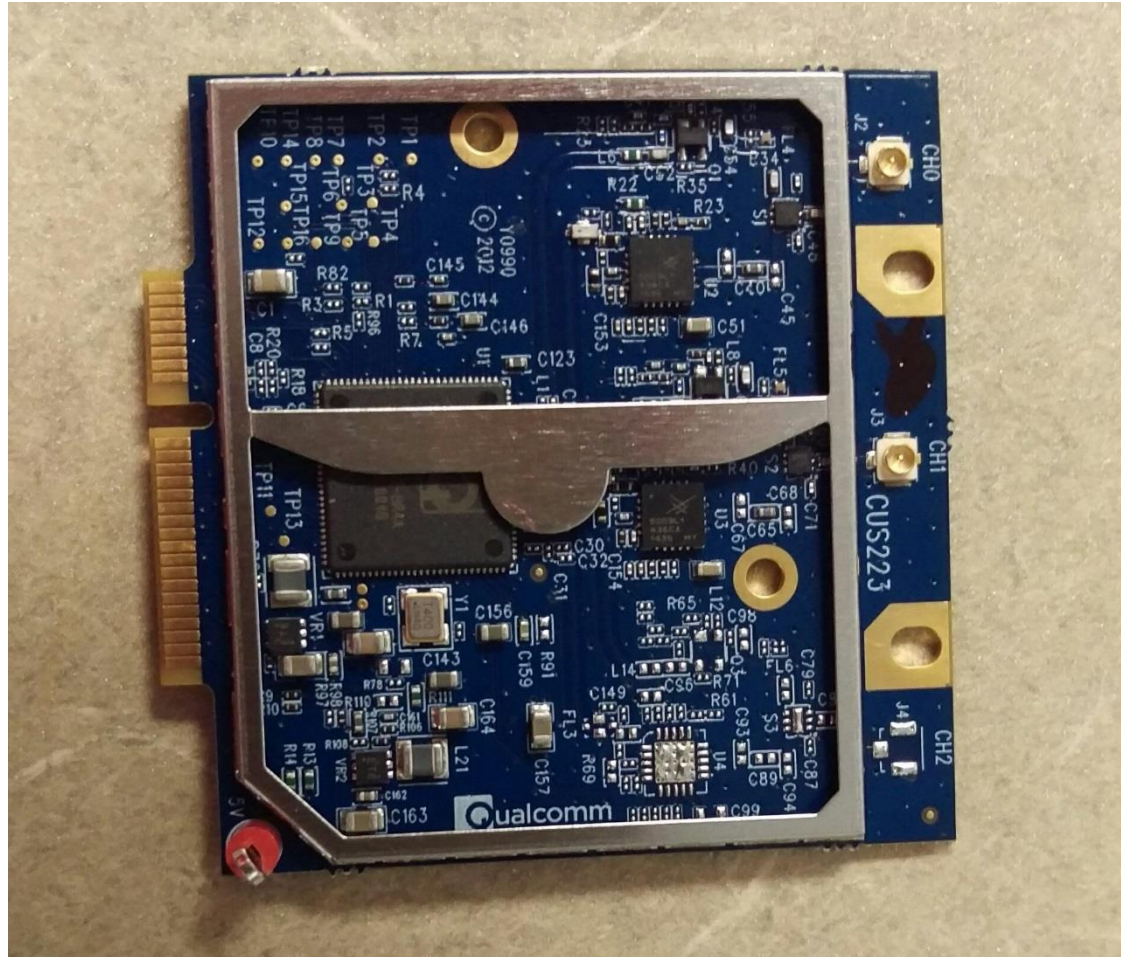
Baseband Board without Shield, Heatsink, Wi-Fi Board, or Heat Spreaders



Wi-Fi Board (1 of 2)



Wi-Fi Board – Internal



Thank You

