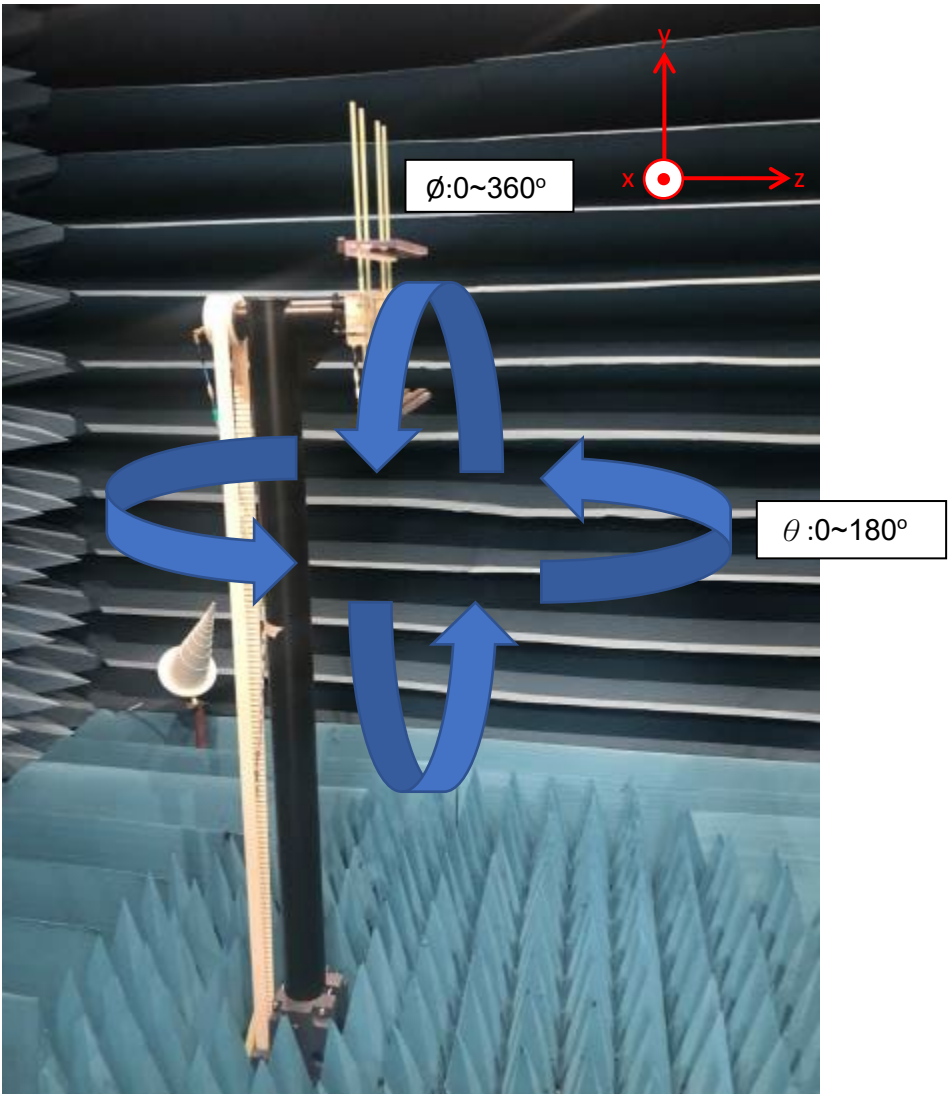


Annex A. Photographs

A.1 Setup Photo

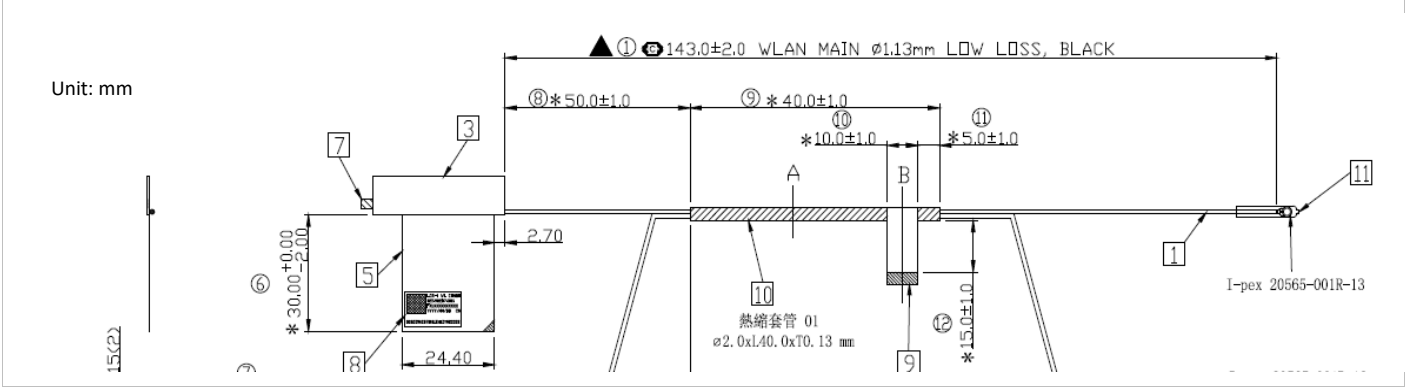
Test Conditions
NB under test placed on a non-conductive structure at sufficient height to be in the 'quiet zone' of the chamber
The NB under test must be fully populated with a power, motherboard, hard drive, disk drives, etc... The purpose is to characterize the antennas on a fully populated customer deliverable unit.
NB's panel should be parallel with XY-plane and face to Y-axle, see diagram below.



A.2 Test sample

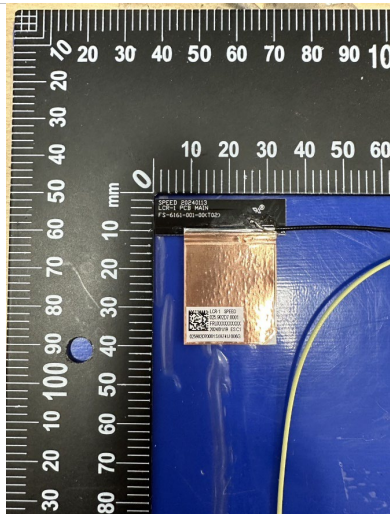
Main Antenna

Antenna Drawing

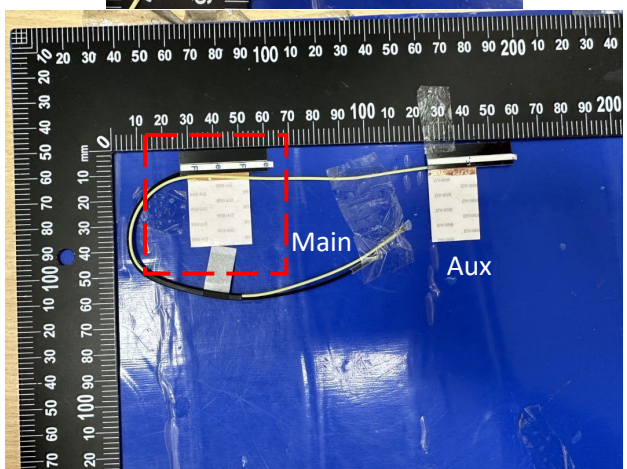
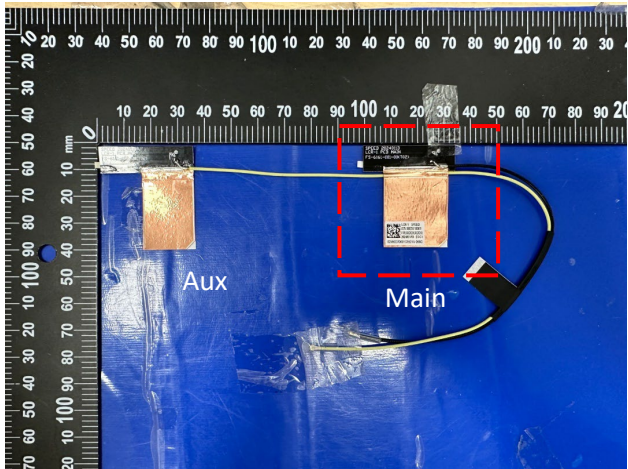
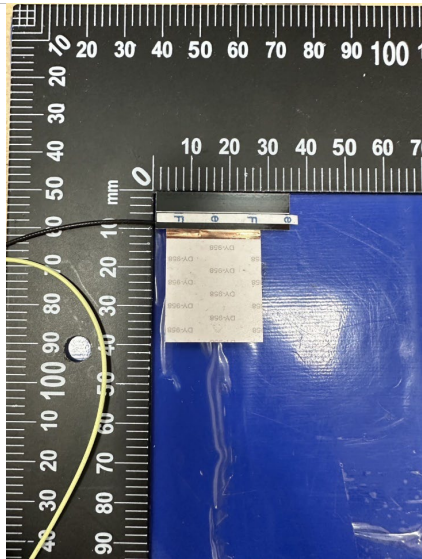


Antenna Photo

Front

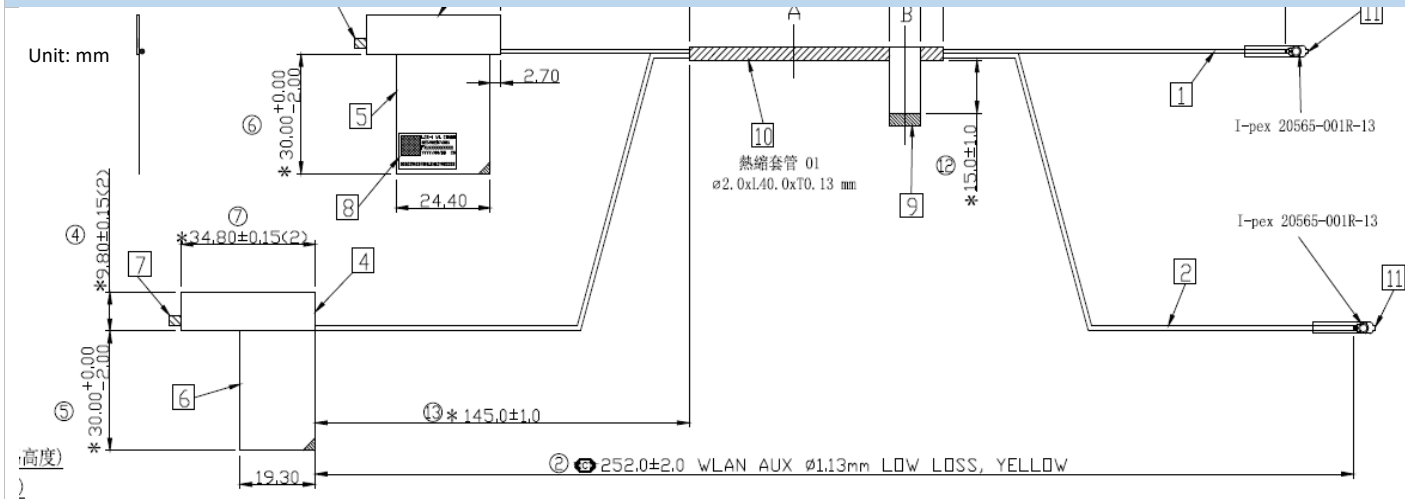


Back



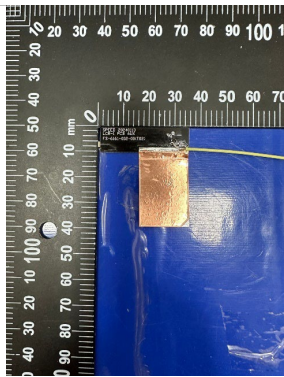
Aux Antenna

Antenna Drawing

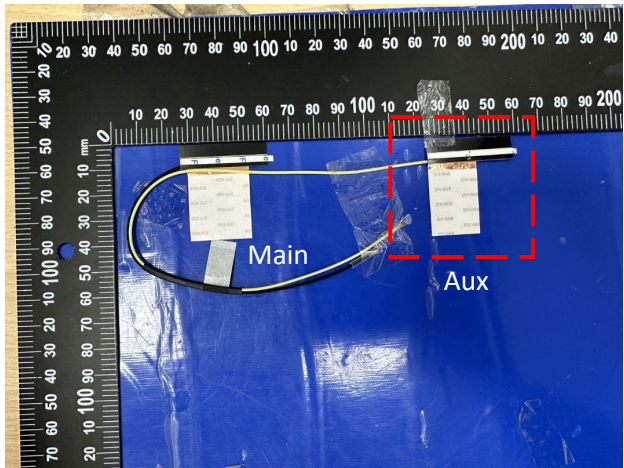
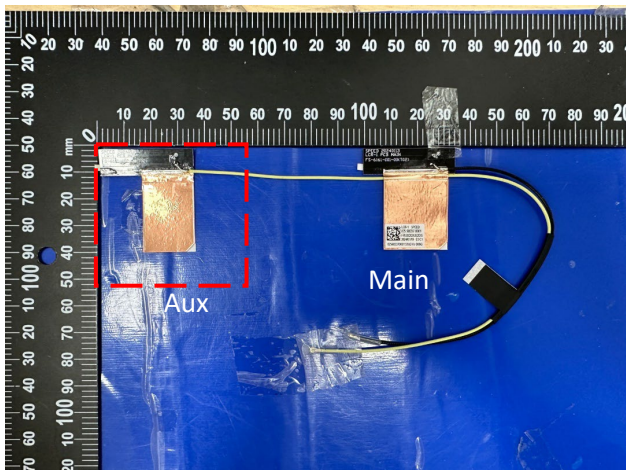


Antenna Photo

Front



Back

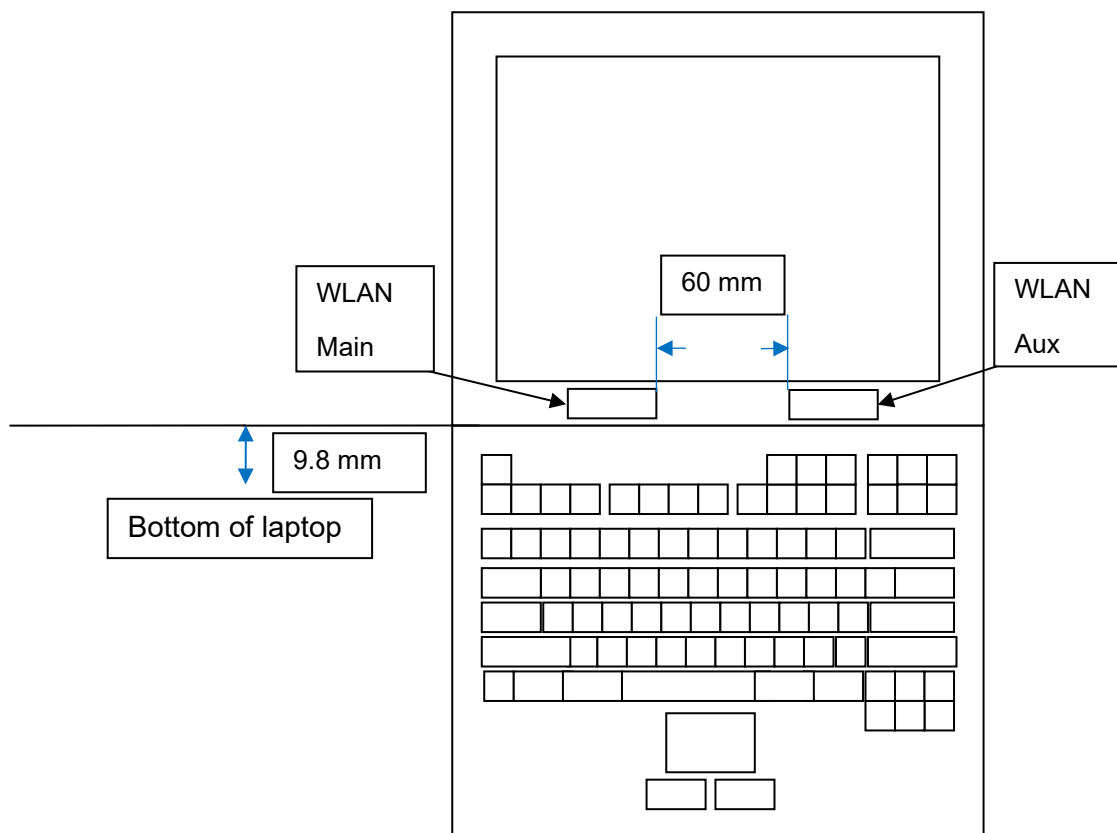


Annex B. Antenna Location

B.1 Antenna Host Platform Location Information

Include a dimensioned photo(s) or dimensioned drawing(s) of Main and Aux antenna placements (measurements are not required for receive-only antenna).

Any antenna that transmits must show dimensions to bottom of laptop. Provide a description of the materials that are used for supporting or surrounding transmit antennas; for example, non-conductive plastics vs. conductive coated plastic or metallic materials.



B.2 Antenna dimensional information for SAR evaluation

Include a dimensioned photo(s) or dimensioned drawing(s) showing the distance (mm) between the transmit antennas and the user. For notebook/laptop hosts show lapheld position (example below). For tablet hosts show all orientations including lapheld, primary & secondary portrait, primary & secondary landscape positions. Include a description of any proximity sensors or power throttling implementations that limit or exclude use of any host orientation.

