

# **GPT-3**

## **HARDWARE MANUAL**

## ***Copyright***

**Copyright © 2003, S&A SYSTEMS, INC. All Rights Reserved.**

No part of this document may be copied or reproduced in any form or by any means without the prior written consent of S&A SYSTEMS, INC.

S&A SYSTEMS, INC. makes no warranties with respect to this documentation and disclaims any implied warranties of merchantability and fitness for a particular purpose. Information in this document is subject to change without notice. S&A SYSTEMS, INC. assumes no responsibility for any errors that may appear in this document.

From time to time changes may occur on the file names and in the files actually included on the distribution disks. S&A SYSTEMS, INC. makes no warranties that such files or facilities, as mentioned in this documentation, exist on the distribution disks or as part of the materials distributed.

FLEETWATCH and S&A SYSTEMS, INC. are registered trademarks of S&A SYSTEMS, INC. IBM is a registered trademark of International Business Machines Corporation.

## **FCC Statement**

This equipment has been tested and found to comply with the limits for a Class B digital device, pursuant to Part 15 of the FCC Rules. These limits are designed to provide reasonable protection against harmful interference in a residential installation. This equipment generates, uses and can radiate radio frequency energy and, if not installed and used in accordance with the instructions, may cause harmful interference to radio communications. However, there is no guarantee that interference will not occur in a particular installation. If this equipment does cause harmful interference to radio or television reception, which can be determined by turning the equipment off and on, the user is encouraged to try to correct the interference by one of the following measures:

- ◆ Reorient or relocate the receiving antenna.
- ◆ Increase the separation between the equipment and receiver.
- ◆ Connect the equipment into an outlet on a circuit different from that to which the receiver is connected.
- ◆ Consult the dealer or an experienced radio/TV technician for help.

Changes or modifications not expressly approved for compliance by S&A SYSTEMS, INC. could void the user's authority to operate the equipment.

It is necessary to use shielded interconnect cables to insure compliance with FCC Class B limits for radio frequency emissions.

## **S&A SYSTEMS, INC. SOFTWARE LICENSE AGREEMENT**

This document is a legal agreement between you, the licensee, and S&A SYSTEMS, INC. By using this program, you are agreeing to become bound by the terms of this agreement. If you do not agree to the terms of this agreement, promptly return the disk package and the other items that are part of this product, in their original package, with your payment receipt, to S&A Systems for a full refund.

In Consideration of payment of the License Fee, which is part of the price evidenced by the receipt, S&A SYSTEMS, INC. grants to the Licensee a nonexclusive right, without right to sublicense, to use this copy of this S&A SYSTEMS, INC. Software on a single Computer at a time. S&A SYSTEMS, INC. reserves all rights not expressly granted, and retains title and ownership of Software, including all subsequent copies in any media. This software and the accompanying written materials are copyrighted. You may copy the Software solely for backup purposes; all other copying of the Software of the written materials is expressly forbidden.

As the only warranty under this Agreement, and in the absence of accident, abuse, or misapplication, S&A SYSTEMS, INC. warrants, to the original Licensee only, that the disk(s) on which the Software is recorded is (are) free from defects on materials and workmanship under normal use and service for a period of ninety (90) days from the date of payment as evidenced by a copy of the receipt. S&A SYSTEMS, INC.'s only obligation under this Agreement is, at S&A SYSTEMS, INC.'s option, to either (a) return payment as evidenced by a copy of the receipt, or (b) replace the disk that does not meet S&A SYSTEMS, INC.'s limited warranty and which is returned to S&A SYSTEMS, INC. with a copy of the receipt. This warranty gives you limited, specific legal rights. You may have other rights, which vary from state to state.

The Software and accompanying written materials are provided "as is", without warranty of any kind, including the implied warranties of merchantability and fitness for a particular purpose, even if S&A SYSTEMS, INC. has been advised of that purpose. S&A SYSTEMS, INC. specifically does not warrant the operation of the Software and will not be liable for any direct, indirect, consequential, or incidental damages arising out of the use of or inability to use such product, even if S&A SYSTEMS, INC. has been advised of the possibility of such damages. Some states do not allow the exclusion or limitation of liability for consequential or incidental damages, so the above limitations may not apply to you.

# Table Of Contents

## Section 1

<b>Introduction .....</b>	<b>1</b>
Program Requirements .....	1
Contacting Technical Support .....	1

## Section 2

<b>Installation .....</b>	<b>3</b>
Connecting the GPT-3 Hardware .....	3
Installing the GPT-3 Interface Software .....	5

## Section 3

<b>Using the GPT-3 Transceiver Module .....</b>	<b>9</b>
Changing the Battery .....	9
Setting the Time and Date .....	9

*Table of Contents*

This Page Intentionally Left Blank

# Section 1

## Introduction

The GTP-3 is a device designed to program data into and retrieve data from the Model 392 Electronic Trip Recorder Unit using special interface software provided with the GTP-3 unit.

## Program Requirements

Your GTP-3 Interface Software requires the following hardware configuration in order to operate properly:

- ◆ IBM PC\XT\AT or compatible
- ◆ Windows95 or higher
- ◆ Windows compatible mouse
- ◆ at least 20 megabytes of available hard disk space
- ◆ An available serial port configured as COM 1 or COM 2

## Contacting Technical Support

S&A Systems will provide you with technical support during business hours Monday through Friday. This support is available through the Engineering Department and is required if you receive an error message. Contact S & A Systems, Inc. at (972)722-1009.

*Note: In order for your call to be handled in the most efficient manner, be sure you have the error message number on hand when calling.*

**Section 1    *Introduction***

This Page Intentionally Left Blank



# Section 2

## Installation

This Section describes how to connect the GTP-3 Mobile Receiver to an IBM compatible computer. It also explains how to install the GTP-3 Interface Software.

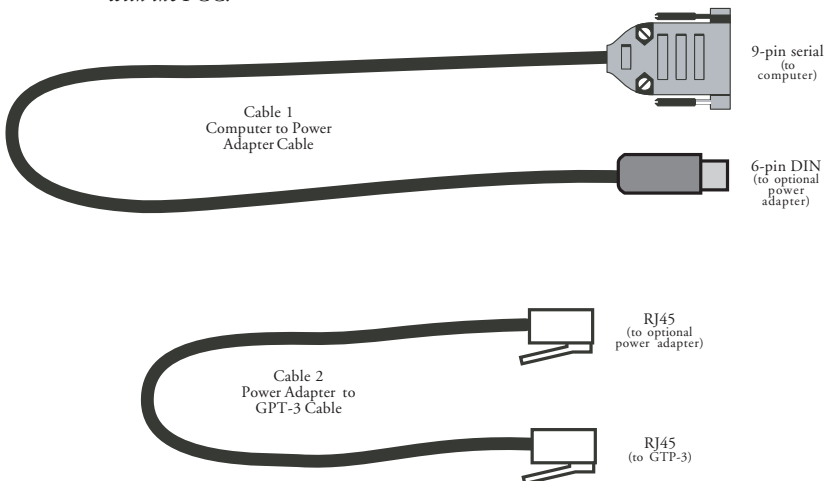
### Connecting the GTP-3 Hardware

Before you begin please be sure you have an IBM compatible computer meeting the specifications given in Section 1 of this manual. Also be sure that your IBM Compatible Computer has an available 9-pin serial port configured as COM 1 or COM 2. This is the port into which the GTP-3 cable must be plugged. If the COM port on your computer is a 25-pin type, an adaptor may be used with the GTP-3 cable to facilitate the connection.

*Note: The port must be configured as COM1 or COM2 for this software.*

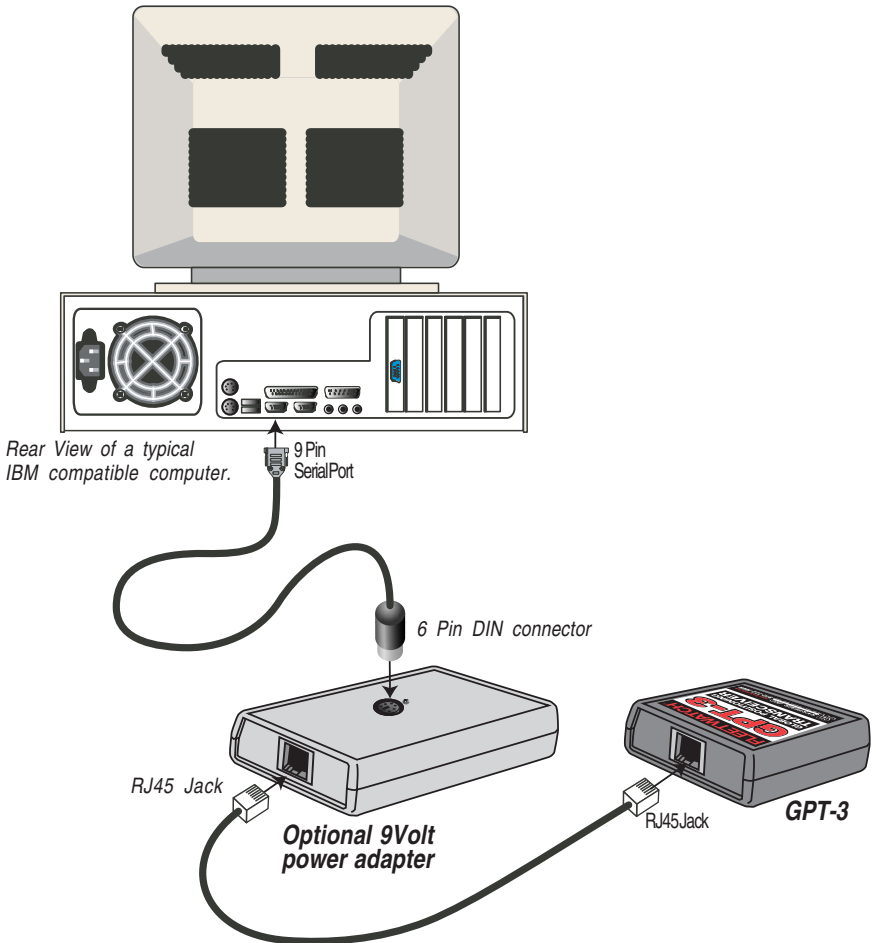
Locate the cables provided with your GTP-3 reader. Locate a 9-pin serial port on the back of your PC.

*Note: These are double-shielded cables and complies with all FCC rules and regulations. It is not recommended that extension cables be used as this would not be in compliance with the FCC.*



## Section 2 *Installation*

Plug the rectangular end of the cable into this port. Take care not to force the plug into the socket. Make sure the plug and socket orientation are the same. Next, carefully insert the RJ45 plug at the other end of the cable into the Model GTP-3 Reader. This plug must also be lined up correctly in order for insertion to take place.



### Connecting the GTP-3 to the computer

- ◆ Connect the 9-pin serial plug on cable 1 to COM 1 or COM 2 serial port
- ◆ Insert the 9-pin DIN plug on cable 1 into the corresponding jack on the GTP-3 optional 9V power adapter
- ◆ Insert the RJ45 plug on cable 2 into the corresponding jack on the GTP-3 optional 9V power adapter
- ◆ Insert the RJ45 plug on cable 2 into the corresponding jack on the GTP-3

## **Installing the GPT-3 Interface Software**

The GPT-3 Interface Software requires at least 10 megabytes of available hard disk space in order to install properly. It is suggested that more than this be available to accommodate any data logs retrieved from the GPT-3 during use. Note: Use the default directory whenever possible to avoid confusion when running the software or attempting to retrieve previously saved data from the hard disk. If you do not use the default directory, please note the new directory name and keep it available at all times when using the GPT-3 Interface Software.

- ◆ Make sure Microsoft Windows version 98 or greater is running on the PC you wish to install the GPT-3 Interface software to.
- ◆ Insert the GPT-3 Interface Software diskette into the computer's floppy disk drive.

*Note: if the GPT-3 installation diskette is not compatible with any of your available floppy drives please contact S & A Systems, to receive the proper disk format.)*

- ◆ From the Windows Program Manager Select "File" from the main menu bar.
- ◆ Select "Run" from the File Menu.
- ◆ In the Command Line box type "A:\SETUP" and click OK or press RETURN.

*Note: "A:" is the letter of the floppy drive the GPT-3 Interface Software Installation Disk #1 is placed in. Substitute the proper drive letter for your PC.*

- ◆ Follow the directions on the screen to a successful installation of the GPT-3 software.

*Note: If the installation successful prompt is not received, make sure the hardware and software requirements are met and attempt installation again. If the software does not install properly please refer to the trouble shooting section of this manual (Section 5).*

## **Specifying the program directory**

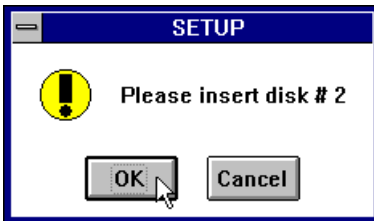
- ◆ Once the installation program begins it will ask you to enter the directory where the GPT-3 Interface Software files will be copied. The default directory is strongly recommended but you may enter the location of your choice. (Figure 2-1)

**Section 2    *Installation***



**Figure 2-1**

The program will then begin copying the GPT-3 Interface Software files to the specified directory. During the installation the program will prompt you to insert GPT-3 Interface Software Installaiton Disk #2 (Figure 2-2). Once you have placed the disk in the aproprate floppy drive click OK to continue installation.



**Figure 2-2**

Once all the GPT-3 Interface Software files have been successfully copied to the specified directory the program will notify you that the installation is complete (Figure 2-3).



Figure 2-3

Click OK to continue. The GPT-3 Interface Software Installation Program will then create a Program Manger Group titled GPT-3 and place the icon for the GPT-3 Interface Software in it (Figure 2-4). To Run the GPT-3 Interface Software double-click on the GPT-3 icon.

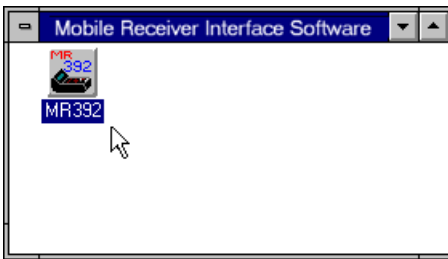


Figure 2-4

*Note: If you do not receive this notification or receive an error message please check all of the hardware and software requirements again. If all requirements are met then try installing the software again paying close attention to the installation insructions. If the software will still not install the diskettes may have been damaged in shipping. Please report this problem to S&A Systems. (See: Contacting Technical Support:Section 1)*

### **Section 3    *Using the GPT-3 Mobile Receiver***

This Page Intentionally Left Blank

# Section 3

## Using the GTP-3 Mobile Receiver

### Changing Battery

To install or change the battery on the GTP-3 power adapter: locate the battery compartment on the GTP-3 power adapter (the end opposite the RJ-45 Jack). Carefully remove the battery compartment cover and remove the battery. The battery may then be replaced with a standard 9 volt battery available at any local battery retailer. Snap the new battery into the battery clip and place the battery into the compartment. Be careful not to pull or pinch the wires connecting the battery clip to the GTP-3 power adapter. Slide the battery cover back into place, and snap closed again being careful not to pinch the battery wires.

### Setting the time and date

The time and date should be set prior to using the GTP-3. Setting the time and date is essential to ensuring accurate organization of the data read by the GTP-3. To set the time and date of the GTP-3 use the setting the time and date of GTP-3 command under Clock Options of the GTP-3 Interface Software.

### **Section 3    *Using the GPT-3 Mobile Receiver***

This Page Intentionally Left Blank