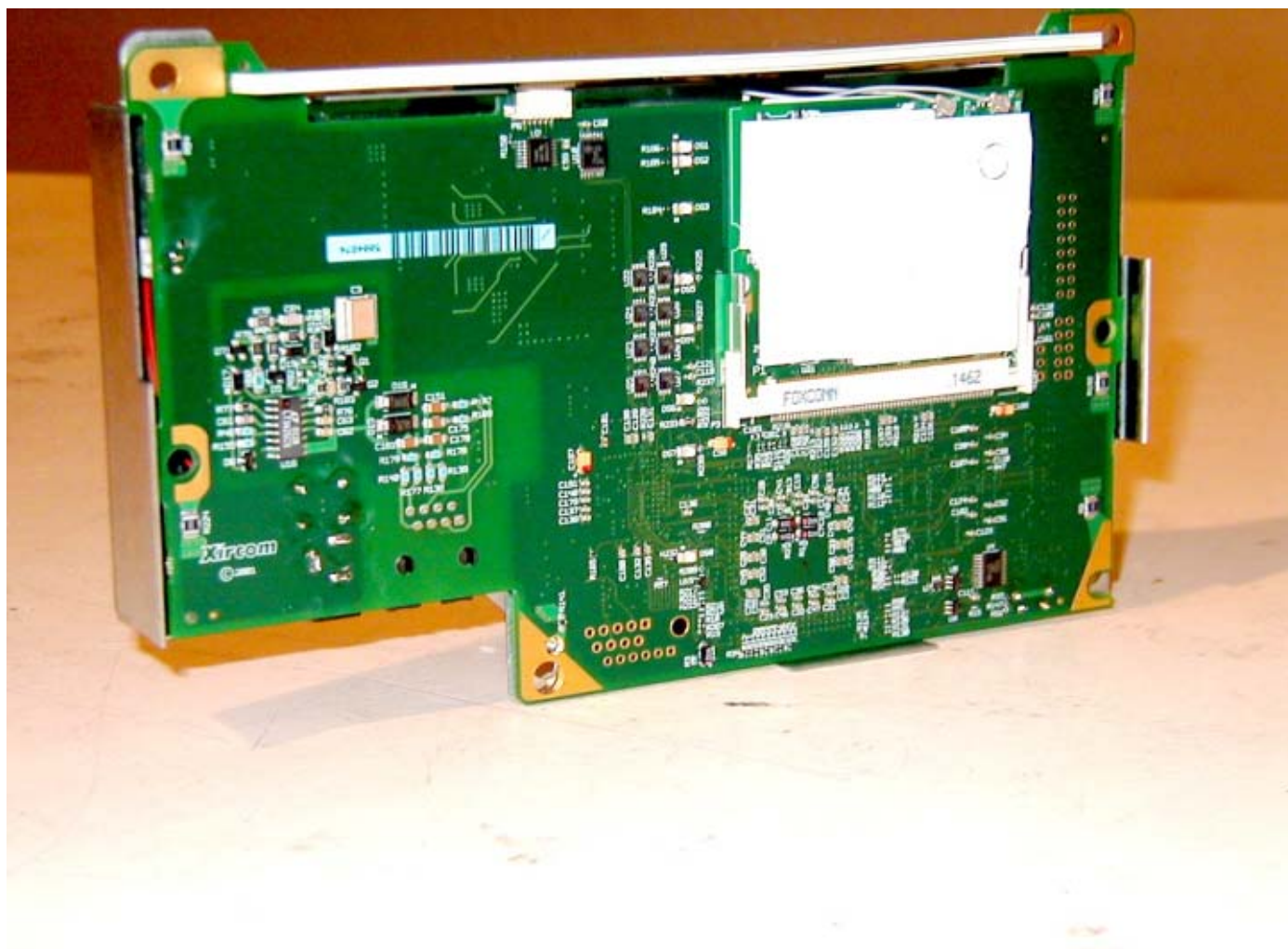




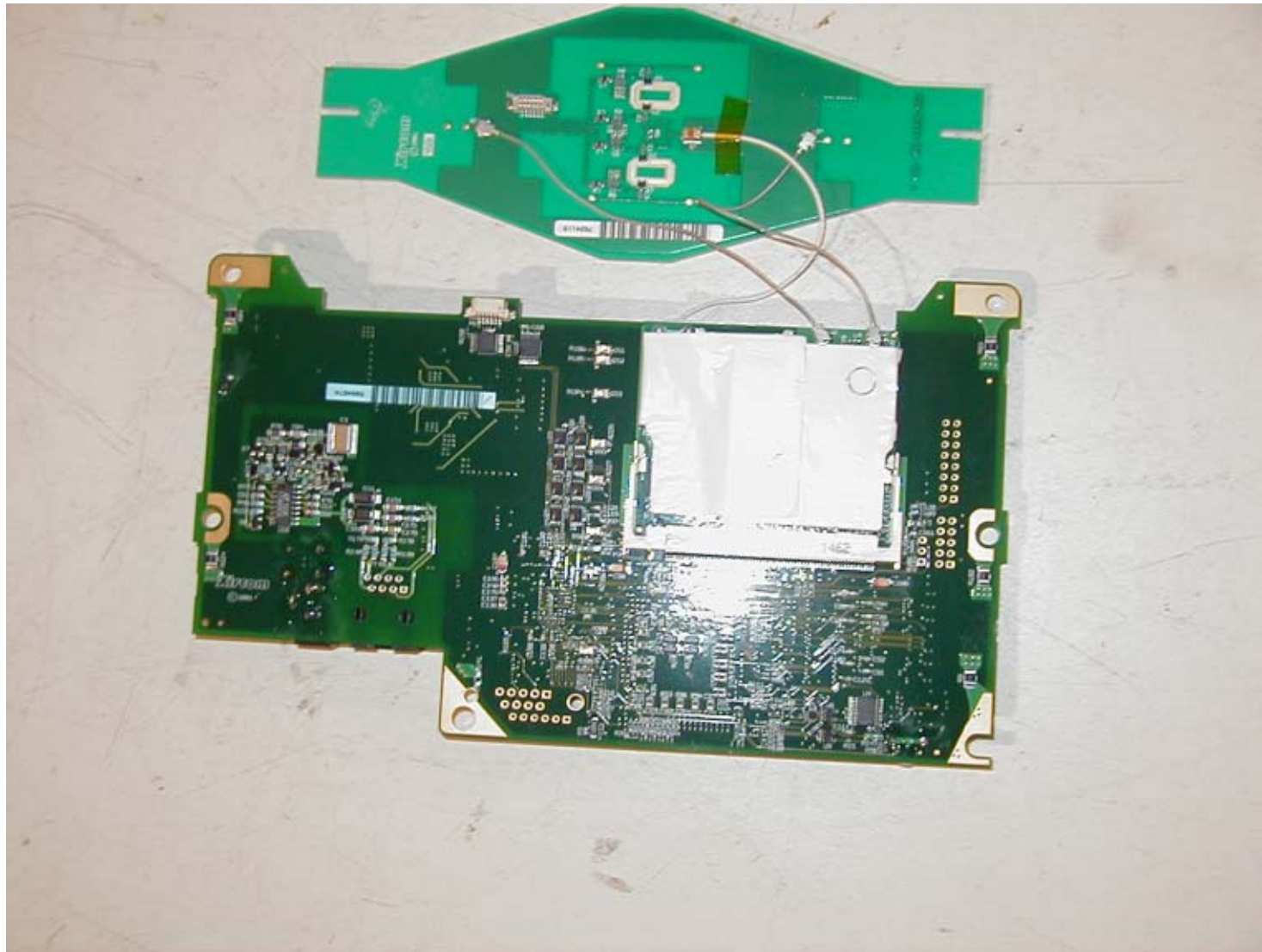
Internal Picture with partial assembly



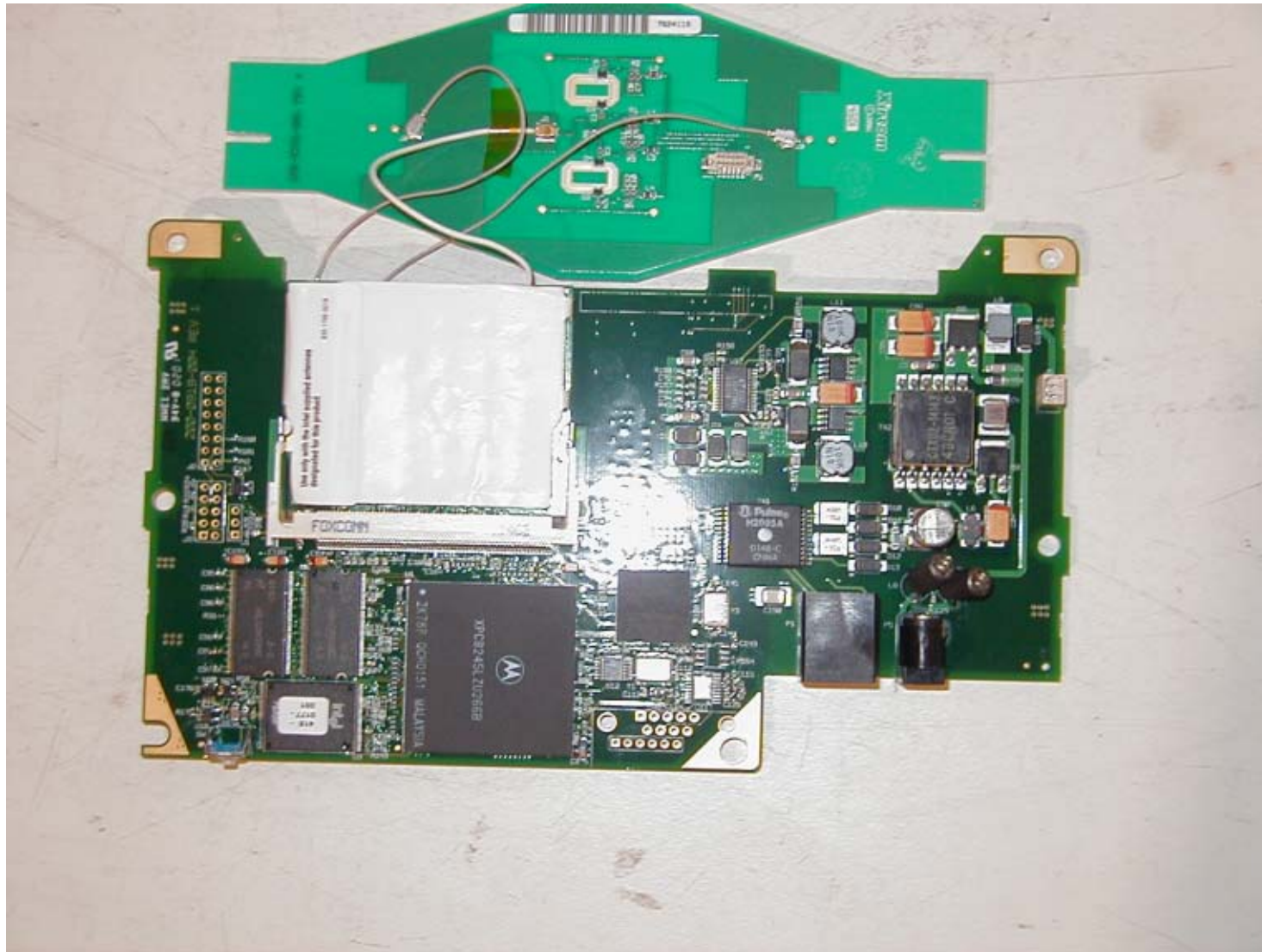
Front Side LED (Exterior Shield)



Half shield removed, exposing the Front Side of AP Motherboard (LED Side)



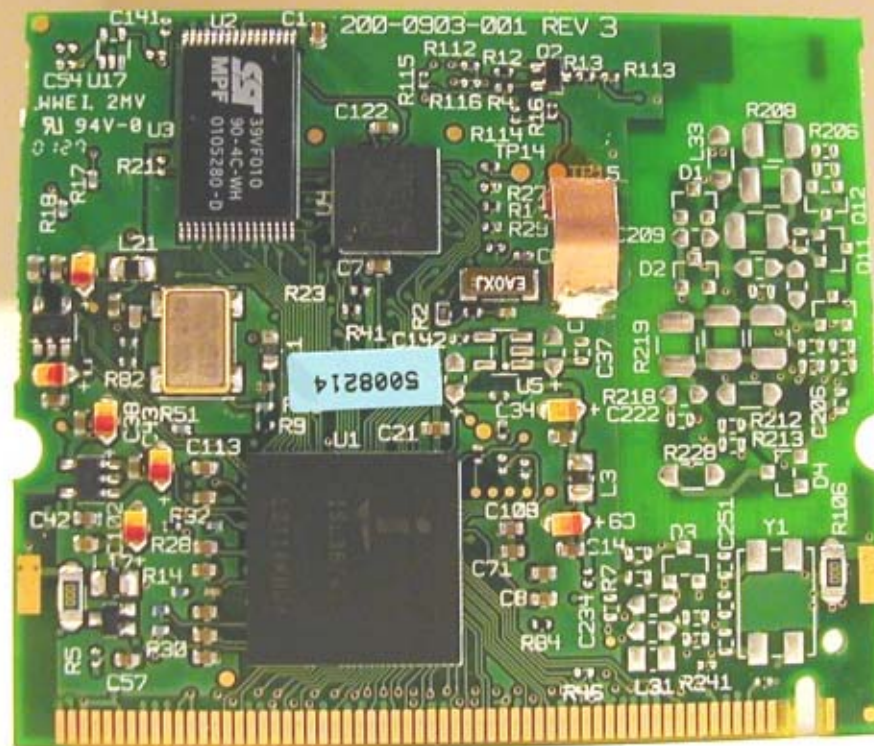
Front Side of AP motherboard showing the 2.4 GHz Mini PCI card and interconnection to antenna.



Back Side of AP Motherboard showing the 5 GHz Mini PCI card and interconnection to antenna



2.4 GHz MINI PCI card front side with shield



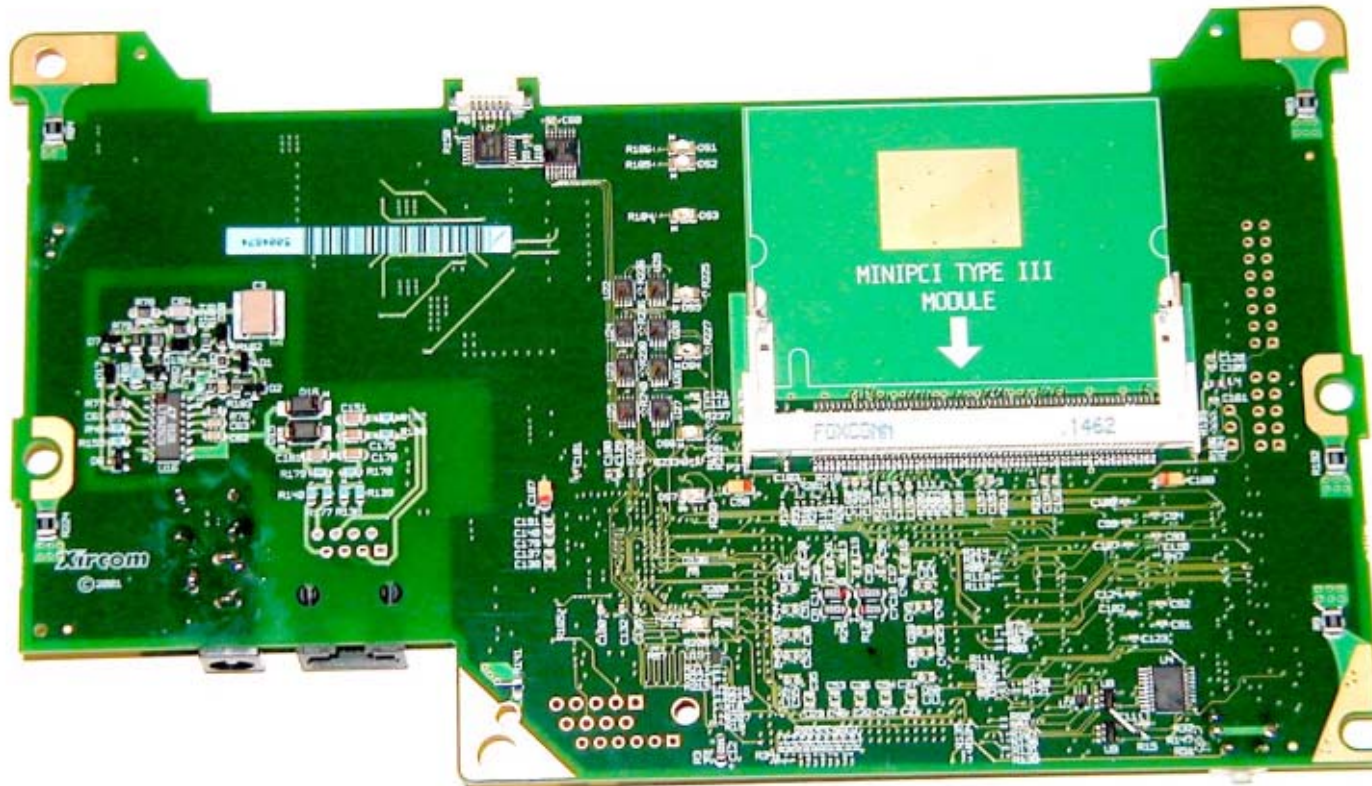
2.4 GHz Mini PCI card back side



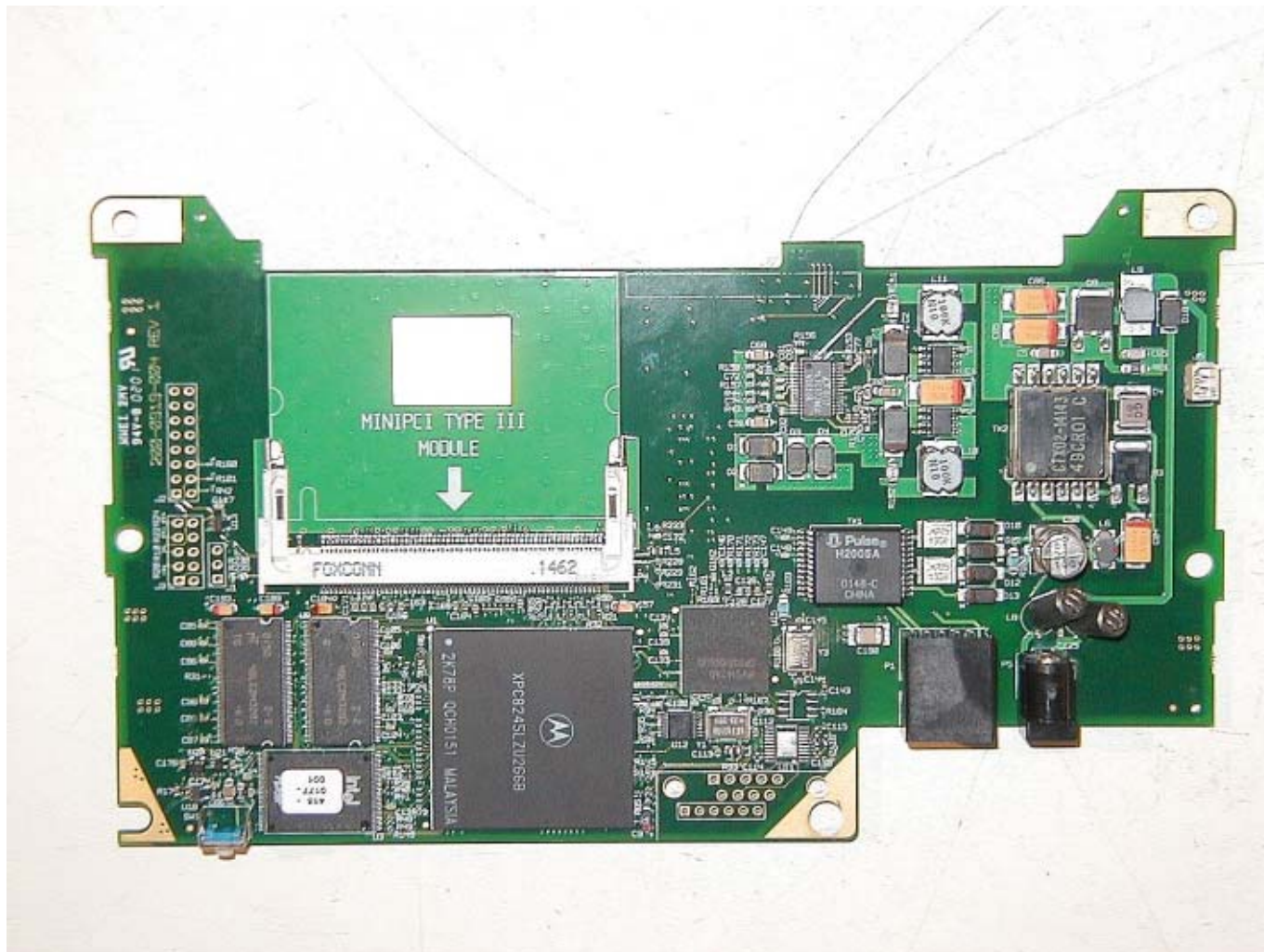
Front Side of 5 GHz Mini PCI W/ Atheros Chip Set with shield



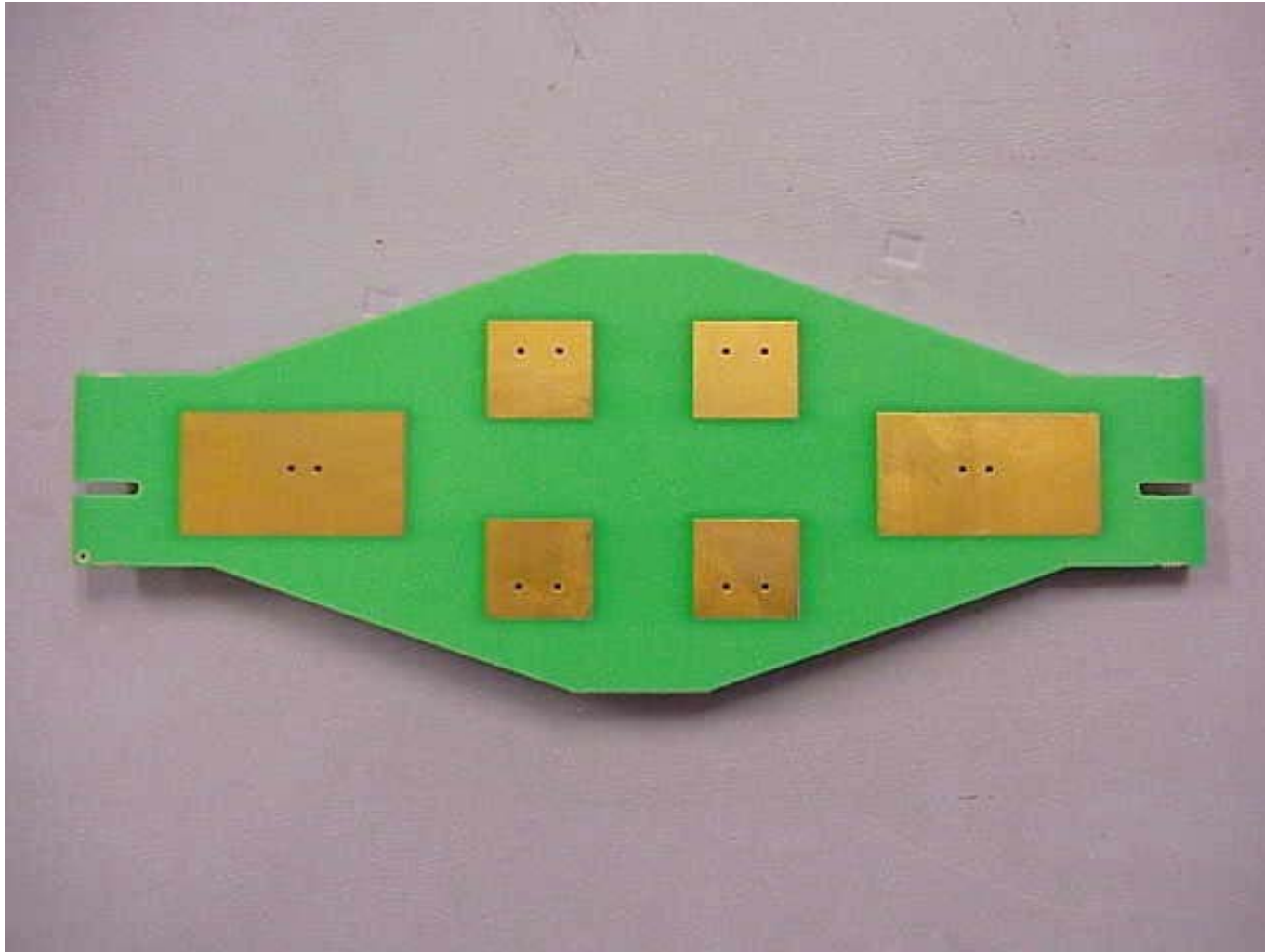
Front Side of 5 GHz MINI PCI W/ Atheros Chip Set Shield removed



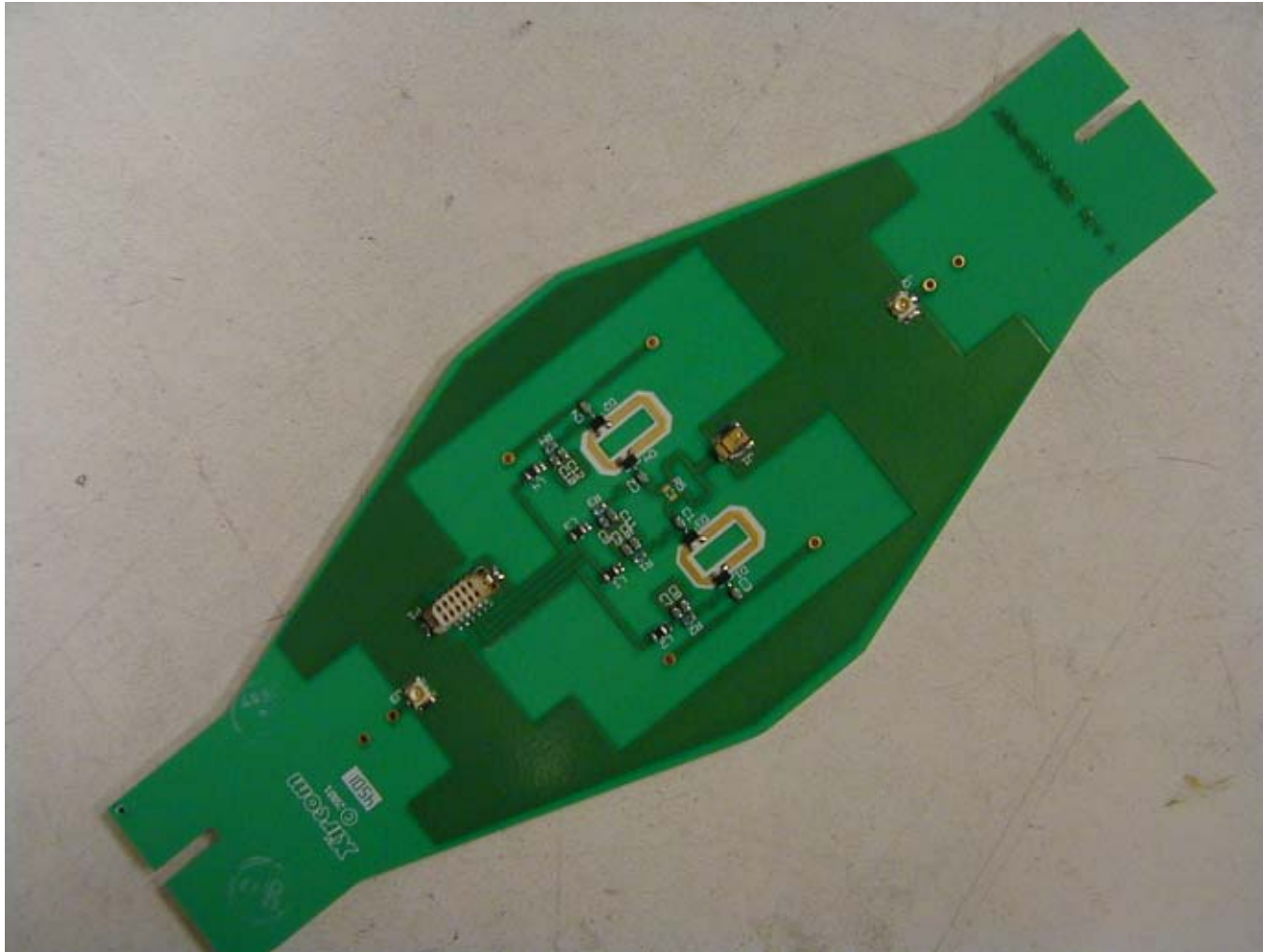
Front Side of AP Motherboard (LED Side) where the 2.4 GHz Mini PCI will be installed



Back side of AP motherboard where the 5 GHz Mini PCI will be installed



Front Side of Antenna



Back Side of Antenna