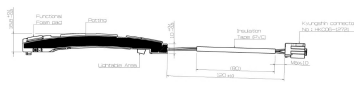


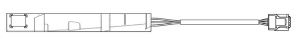
Bottom View
ANTENA ASSY - DNS PE DR D/S RH
82657-1L300



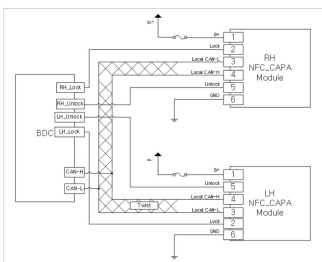
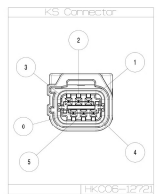
Front View



Top View



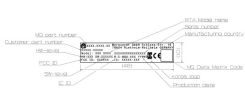
Top View
ANTENA ASSY - DNS PE DR D/S LH
82657-1L300



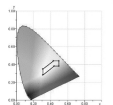
No.	Ver.	Rev.	QTY	Rev. QTY	Rev. QTY	Rev. QTY	Rev. QTY	Rev. QTY	Rev. QTY	Rev. QTY	Rev. QTY	Rev. QTY
1	1.00	1	10000	1	10000	1	10000	1	10000	1	10000	1
2	1.00	1	10000	1	10000	1	10000	1	10000	1	10000	1
3	1.00	1	10000	1	10000	1	10000	1	10000	1	10000	1
4	1.00	1	10000	1	10000	1	10000	1	10000	1	10000	1
5	1.00	1	10000	1	10000	1	10000	1	10000	1	10000	1
6	1.00	1	10000	1	10000	1	10000	1	10000	1	10000	1
7	1.00	1	10000	1	10000	1	10000	1	10000	1	10000	1



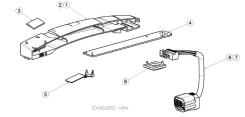
Isometric view



Label Content & Specification (21)



IP/L LED Intensity vs Wavelength



Exploded view

Rev	By	Appr	U-Case	Desc	Note
1	KSJ	KD	040308	DRP	First Release
2	KSJ	KD	040308	DRP	2nd Release
3	KSJ	KD	040307	DRP	1st Release

SPECIFICATION			
Antenna Type	RED DATA ANTENNA Q/S DR TEL. ASSY		
Operating Temperature Range	-40°C to +150°C		
Storage Temperature Range	-55°C to +175°C		
Operating Voltage Range	5.0V		
Operating Current	100mA		
Max Current	100mA		
LED Operating Frequency	500kHz		
Packet Light Current	100mA		

No.	Qty	Part No.	Description	Rev.	U-Case	Desc	Note
1	1	82657-1L300	DRP 180 180 180 180 180	0000	DRP	1st Release	
2	1	82657-1L300	DRP 180 180 180 180 180	0000	DRP	1st Release	

Rev	By	Appr	U-Case	Desc	Note
1	KSJ	KD	040308	DRP	First Release
2	KSJ	KD	040308	DRP	2nd Release
3	KSJ	KD	040307	DRP	1st Release

REQUIREMENTS OF CONFORMING APPROVAL OF THE HMD ENGINEERING DESIGN TEAM
 1. CONFORMING APPROVAL OF THE HMD ENGINEERING DESIGN TEAM
 2. WITH THE CHANGE OF DRAWING COMPONENTS OR PRODUCTION METHOD CHANGES, NOTIFY THE APPROVAL OF ENGINEERING DESIGN TEAM WHEN IT IS APPROVED.

- THIS PART MUST MEET FOLLOWING SPECIFICATIONS
 - EIS0000-001 (SHELL MARKING STANDARD)
 - EIS0000-002 (PART MARKING SOFTWARE MANAGEMENT SPEC)
 - EIS0000-003 (MATERIAL INSPECTION PROCEDURE - PFTO, A, AND)
 - EIS0000-004 (ELECTROSTATIC DISCHARGE PROTECTION OF ELECTRONIC ASSEMBLY)
 - EIS0000-005 (SPECIFICATION FOR CLEANABILITY CONTROL OF AUTOMOTIVE SEMICONDUCTOR)
 - EIS0000-006 (ENVIRONMENTAL RELIABILITY SPECIFICATION FOR AUTOMOTIVE ELECTRONIC UNITS)
 - EIS0000-007 (ENVIRONMENTAL RELIABILITY SPECIFICATION FOR AUTOMOTIVE ELECTRONIC UNITS)
 - EIS0000-008 (SOLDERABILITY SPECIFICATION FOR AUTOMOTIVE ELECTRONIC UNITS)

- REQUIREMENTS
 - EIS0000-001 (SOLDERABILITY SPECIFICATION FOR PCB CONNECTOR OF AUTOMOTIVE ELECTRONIC DEVICE)
 - EIS0000-002 (ENVIRONMENTAL TEST OF ELECTRONIC DEVICE FOR VEHICLE)
 - EIS0000-003 (LOW VOLTAGE MOTOR SYSTEM PROTECTION)
 - EIS0000-004 (WATER WASH TEST PROTECTION)
 - EIS0000-005 (HEAT SHOCK TEST SPECIFICATION)
 - EIS0000-006 (LIMITED CONDUCTIVE ION ON CAN)
 - EIS0000-007 (ELECTROSTATIC DISCHARGE PROTECTION)
 - EIS0000-008 (FUSION SOLDER)
 - EIS0000-009 (ELECTROSTATIC DISCHARGE PROTECTION)
 - EIS0000-010 (ELECTROMAGNETIC COMPATIBILITY SPECIFICATION)

- REQUIREMENTS
 - THIS PART SHOULD CONFORM TO FOLLOWING REGULATIONS
 - ROHS (RESTRICTED SUBSTANCE) REGULATIONS (REPEAL OF SVHC)
 - REPEAL OF SVHC (REPEAL OF SVHC)
 - REPEAL OF SVHC (REPEAL OF SVHC)
 - REPEAL OF SVHC (REPEAL OF SVHC)
 - REPEAL OF SVHC (REPEAL OF SVHC)

FOR EVALUATION OF THE PRODUCTION PROCESS, THE OPERATING TEMPERATURE RANGE OF THE PACKAGE SHOULD BE DETERMINED BY THE MANUFACTURER.

REQUIREMENTS

1. THE DIMENSIONS OF THE PART MUST BE MEASURED AFTER 24 HOURS FROM COMPLETION OF THE MANUFACTURING PROCESS.

2. UNDESIRABLE SPARKS SHOULD BE MINIMUM.

3. ELECTRICAL PERFORMANCE OF THIS PART MUST MEET WATER-PROOF AND DUST PROOF LEVEL 5 (IP54) REQUIREMENTS.

4. CONTACT AREA OF WIRE SHALL BE FREE FROM SPARK DUE TO TENSILE & SHEAR FORCE.

5. CONTACT SURFACE SHALL BE REFINISHED BY CORNABLAST, POLISHING, AND THE SURFACE MUST BE SUBSTRATE.

6. ALL ELECTRICAL COMPONENTS DESIGN FOR AUTOMOTIVE MUST BE APPLIED TO CONSUMER MARKET APPROVAL. IF NOT APPLIED TO CONSUMER MARKET APPROVAL, THE PART MUST BE REFINISHED BY CORNABLAST, POLISHING, AND THE SURFACE MUST BE SUBSTRATE.

7. THIS PART MUST BE REFINISHED BY CORNABLAST, POLISHING, AND THE SURFACE MUST BE SUBSTRATE.

8. ALL ELECTRICAL COMPONENTS DESIGN FOR AUTOMOTIVE MUST BE APPLIED TO CONSUMER MARKET APPROVAL. IF NOT APPLIED TO CONSUMER MARKET APPROVAL, THE PART MUST BE REFINISHED BY CORNABLAST, POLISHING, AND THE SURFACE MUST BE SUBSTRATE.

9. THIS PART MUST BE REFINISHED BY CORNABLAST, POLISHING, AND THE SURFACE MUST BE SUBSTRATE.

10. APPLY DIGITAL KEY 50.

REVISIONS

No.	Rev	By	Appr	U-Case	Desc	Note
1	1.00	KSJ	KD	040308	DRP	First Release
2	1.00	KSJ	KD	040308	DRP	2nd Release
3	1.00	KSJ	KD	040307	DRP	1st Release
4	1.00	KSJ	KD	040307	DRP	1st Release

FOR EVALUATION OF THE PRODUCTION PROCESS, THE OPERATING TEMPERATURE RANGE OF THE PACKAGE SHOULD BE DETERMINED BY THE MANUFACTURER.

REQUIREMENTS

1. THE DIMENSIONS OF THE PART MUST BE MEASURED AFTER 24 HOURS FROM COMPLETION OF THE MANUFACTURING PROCESS.

2. UNDESIRABLE SPARKS SHOULD BE MINIMUM.

3. ELECTRICAL PERFORMANCE OF THIS PART MUST MEET WATER-PROOF AND DUST PROOF LEVEL 5 (IP54) REQUIREMENTS.

4. CONTACT AREA OF WIRE SHALL BE FREE FROM SPARK DUE TO TENSILE & SHEAR FORCE.

5. CONTACT SURFACE SHALL BE REFINISHED BY CORNABLAST, POLISHING, AND THE SURFACE MUST BE SUBSTRATE.

6. ALL ELECTRICAL COMPONENTS DESIGN FOR AUTOMOTIVE MUST BE APPLIED TO CONSUMER MARKET APPROVAL. IF NOT APPLIED TO CONSUMER MARKET APPROVAL, THE PART MUST BE REFINISHED BY CORNABLAST, POLISHING, AND THE SURFACE MUST BE SUBSTRATE.

7. THIS PART MUST BE REFINISHED BY CORNABLAST, POLISHING, AND THE SURFACE MUST BE SUBSTRATE.

8. ALL ELECTRICAL COMPONENTS DESIGN FOR AUTOMOTIVE MUST BE APPLIED TO CONSUMER MARKET APPROVAL. IF NOT APPLIED TO CONSUMER MARKET APPROVAL, THE PART MUST BE REFINISHED BY CORNABLAST, POLISHING, AND THE SURFACE MUST BE SUBSTRATE.

9. THIS PART MUST BE REFINISHED BY CORNABLAST, POLISHING, AND THE SURFACE MUST BE SUBSTRATE.

10. APPLY DIGITAL KEY 50.

11. APPLY DIGITAL KEY 50.