

))) RADIO METRIX

TX21-466-5-12K5-DWUS

12.5kHz NBFM

Multi Channel Transmitter

Frequency: 466.500-466.5125 MHz, 12.5kHz

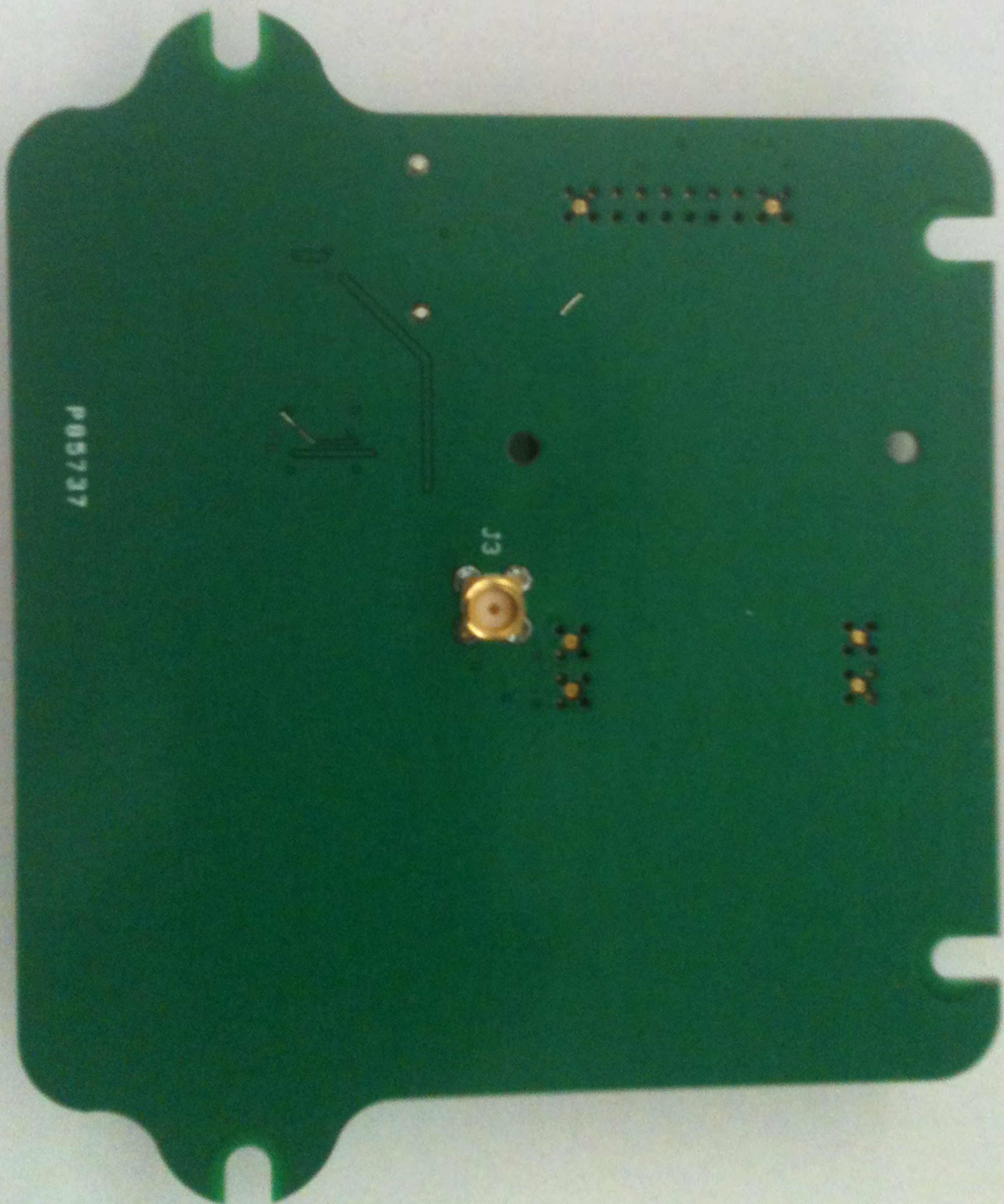
RF Power: 100mW

CE  

Batch No: T1100013

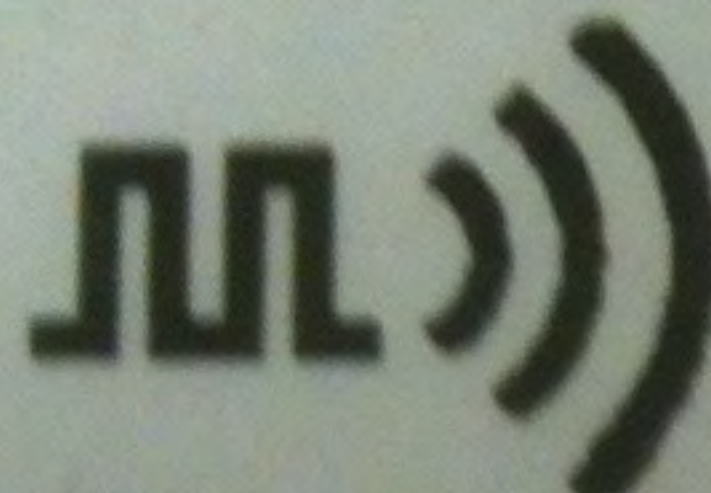
Serial No: 8000000





P05737



 **RADIOMETRIX**

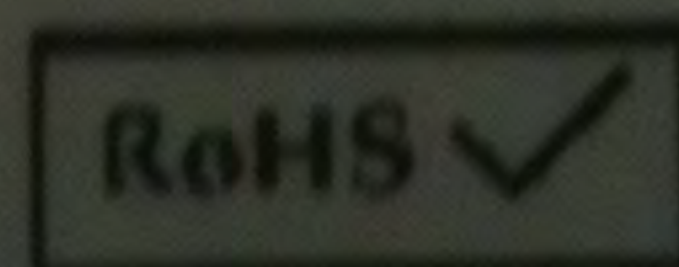
TX2I-466-5-12K5-DWUS

12.5kHz NBFM

Multi Channel Transmitter

Frequency: CH0:466.0375MHz , CH1:466.0625MHz....CH13:466.3625MHz

RF Power: 100mW



Batch No: TH100512

Serial No : RMX1692

M)) RADIO METRIX

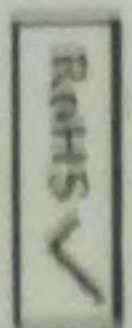
TX2I-464-5-12K5-DWCA

12.5kHz NBFM

Multi Channel Transmitter

Frequency: CH0:464.6250MHz, CH1:464.6375MHz, CH2:464.6500MHz

RF Power: 100mW



Batch No: TH100512

Serial No : RMX1670


Tested Model
Assembly P/N: 216-1075
IC: 2860 J
Date: 11/16/2012
Revision: 1
Date: 02/10/2012





P85737

J3

 **RADIOMETRIX** ✓

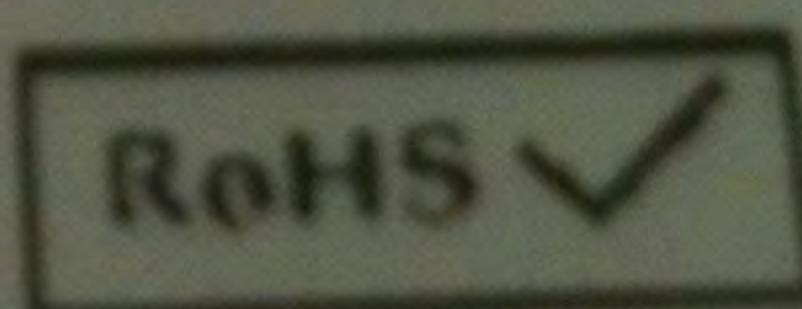
TX2I-464-5-12K5-DWCA

12.5kHz NBFM

Multi Channel Transmitter

Frequency: CH0:464.6250MHz , CH1:464.6375MHz....CH14:464.8000MHz

RF Power: 100mW



Batch No: TH100512

Serial No : RMX1670

