

2150GR Digital Antenna Driver (D.A.D.) Unit: internal pictures

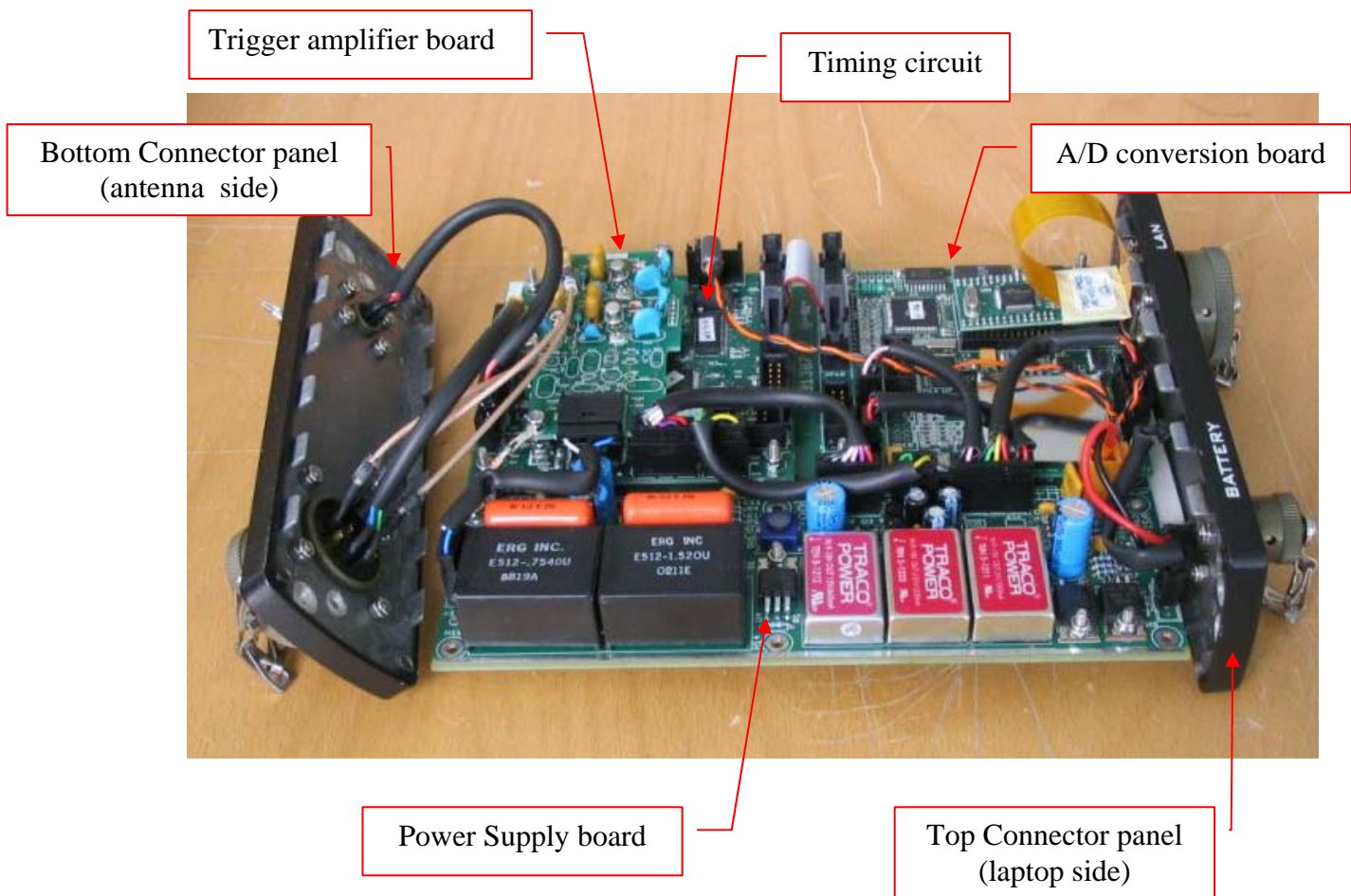


Fig. 1: DAD internal pictures showing the internal boards and panels

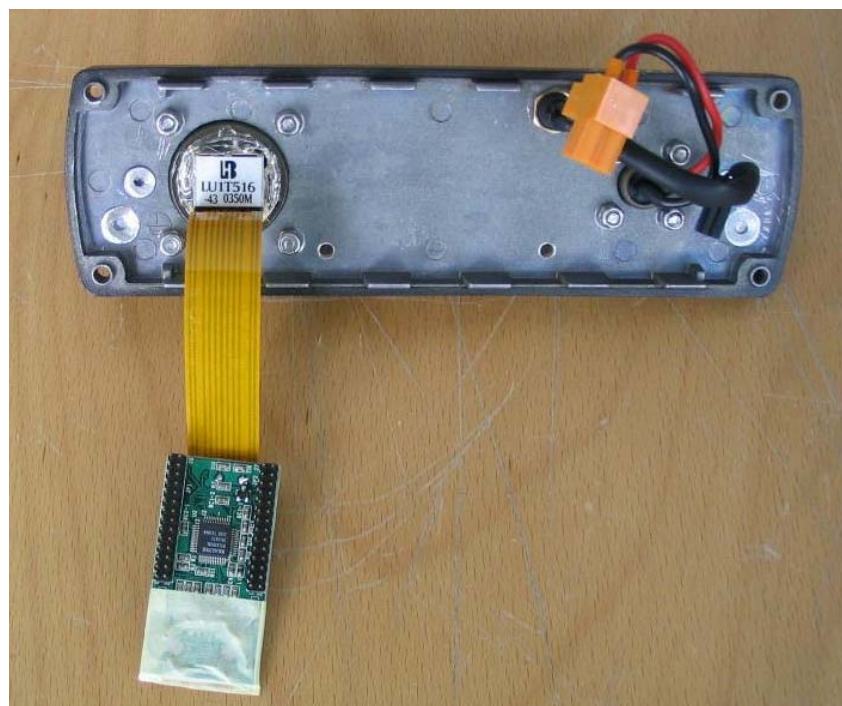


Fig. 2: Top connector panel: on the left the LAN interface board



Fig. 3: LAN interface board - top side (left) and bottom side (right)

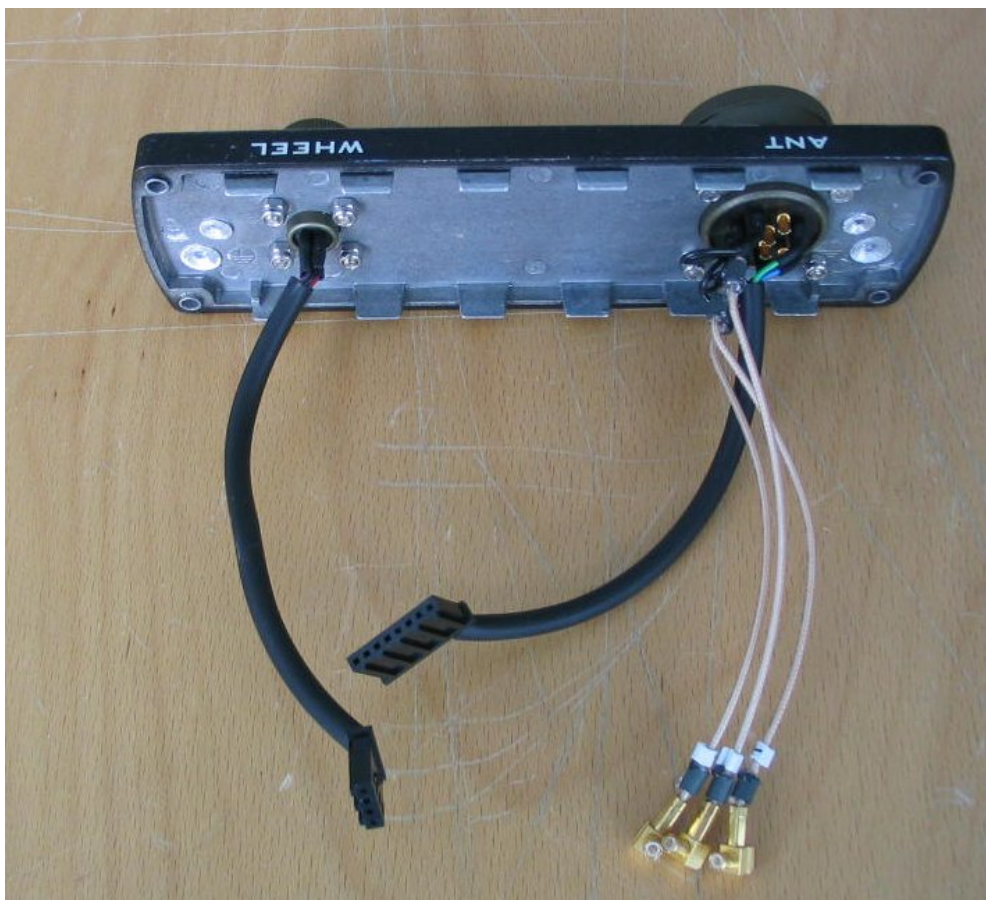


Fig. 4: Bottom connector panel

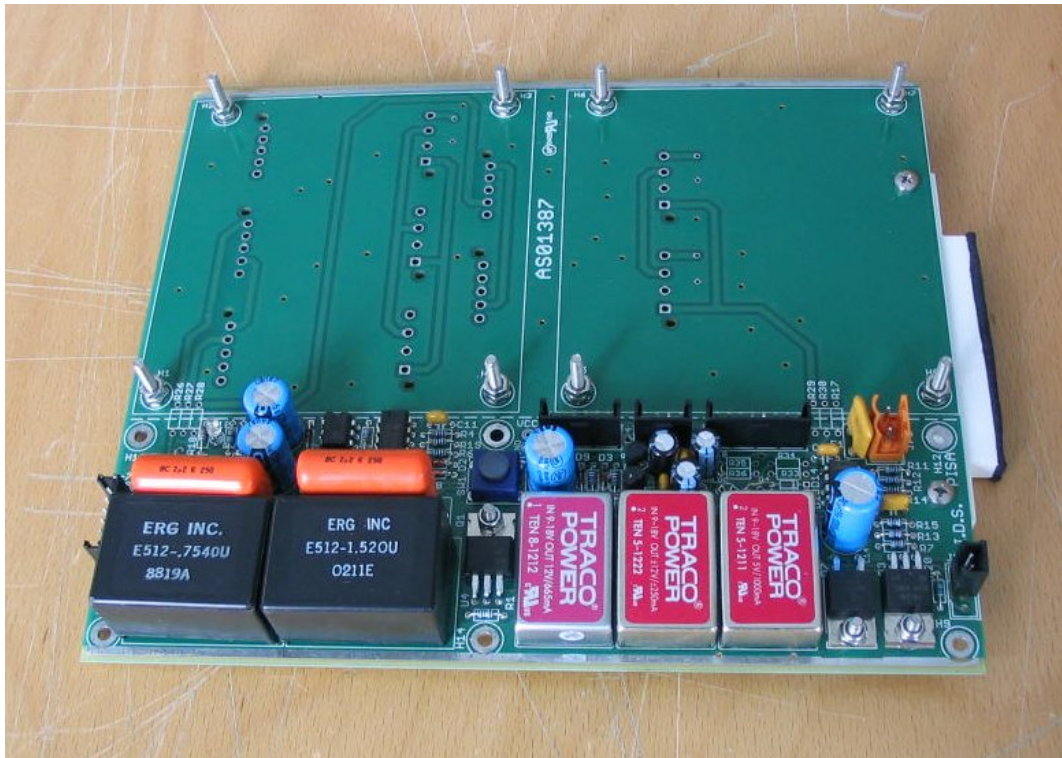


Fig. 5: Power supply board (component side)

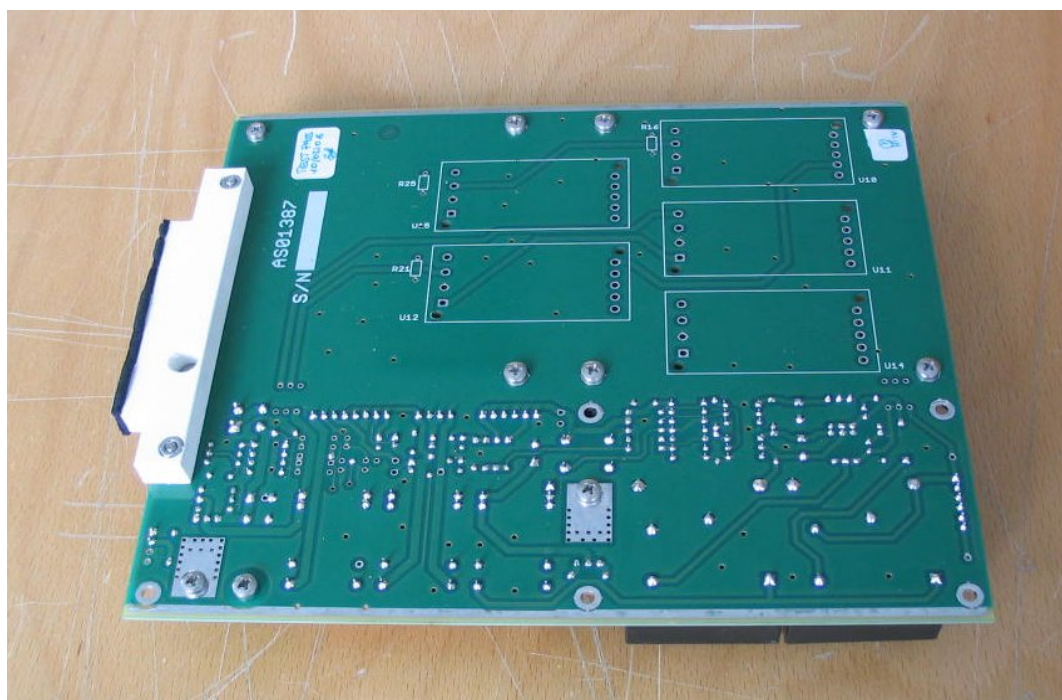


Fig. 6: Power supply board (bottom side)

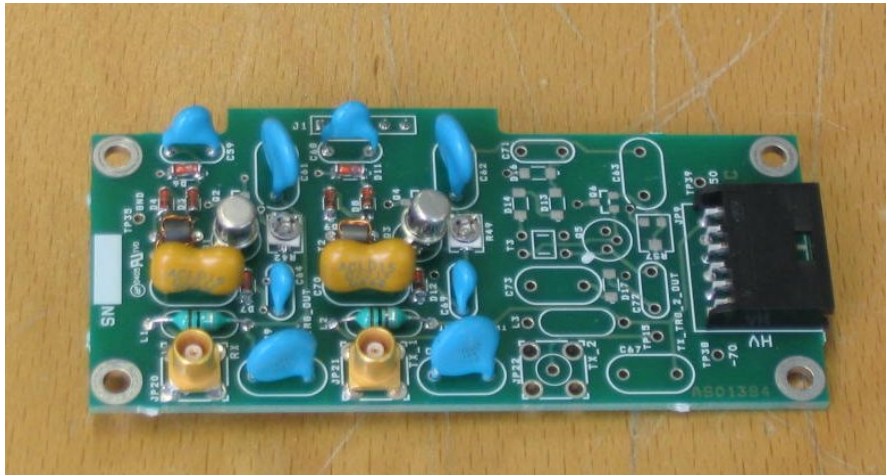


Fig. 7: Trigger amplifier board (component side)

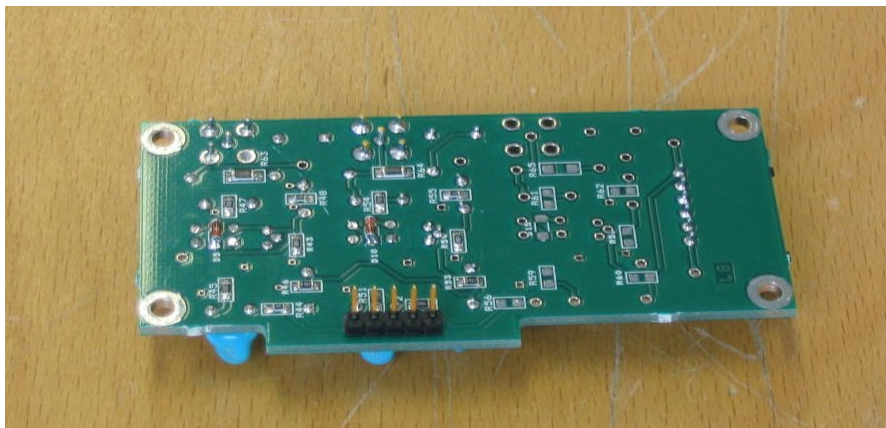


Fig. 8: Trigger amplifier board (bottom side)

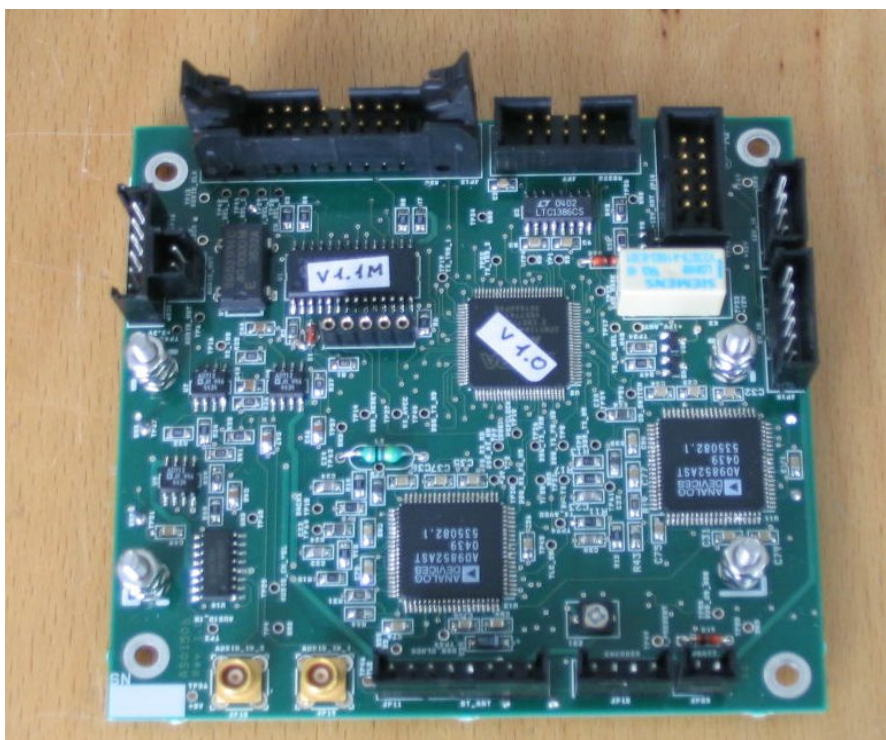


Fig. 9: Timing circuit (component side)

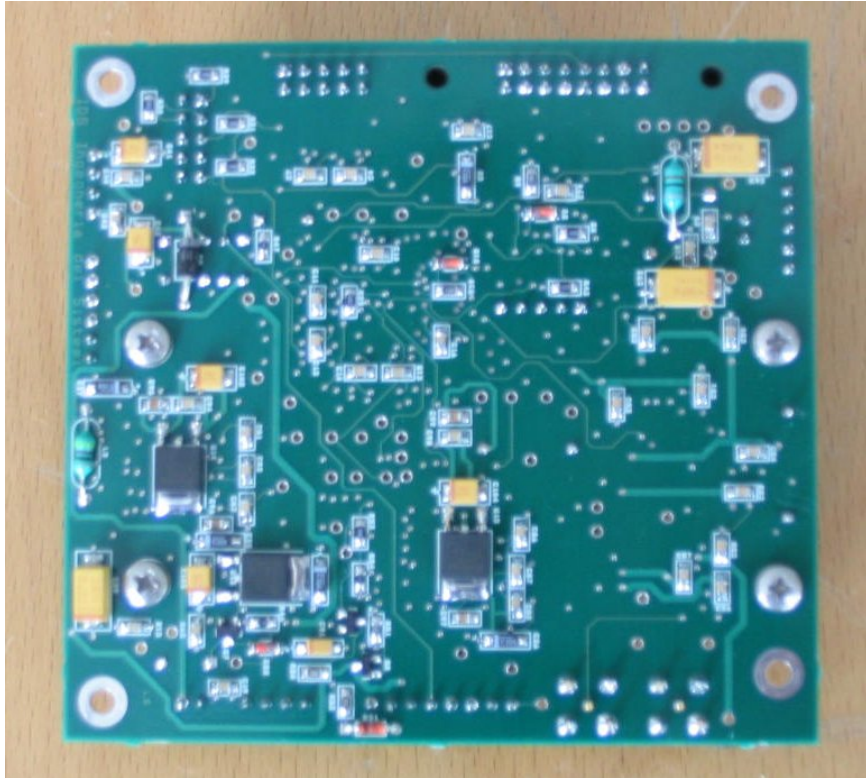
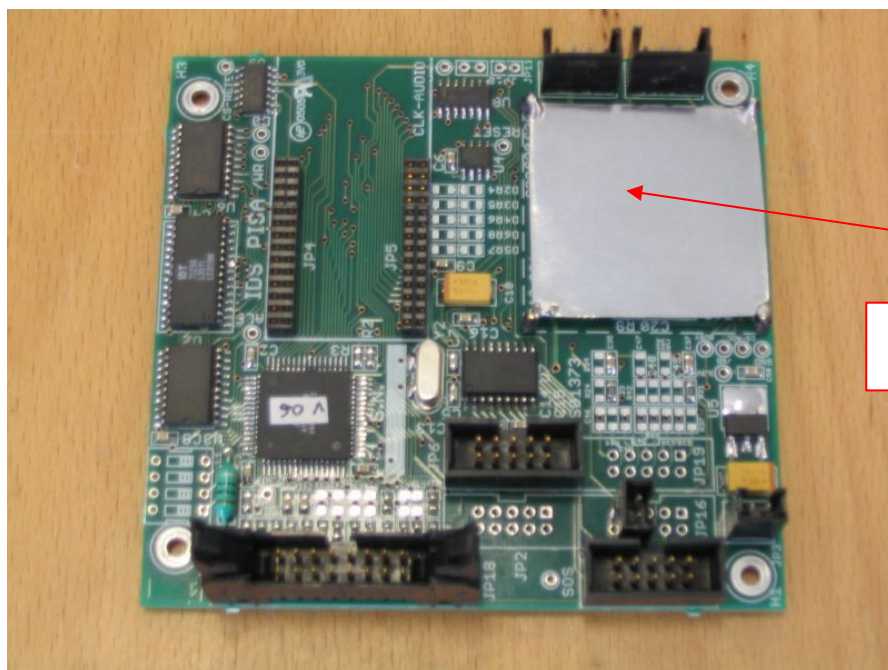


Fig. 10: Timing circuit (bottom side)



Metallic
shield

Fig. 11: A/D conversion board with shield (component side)

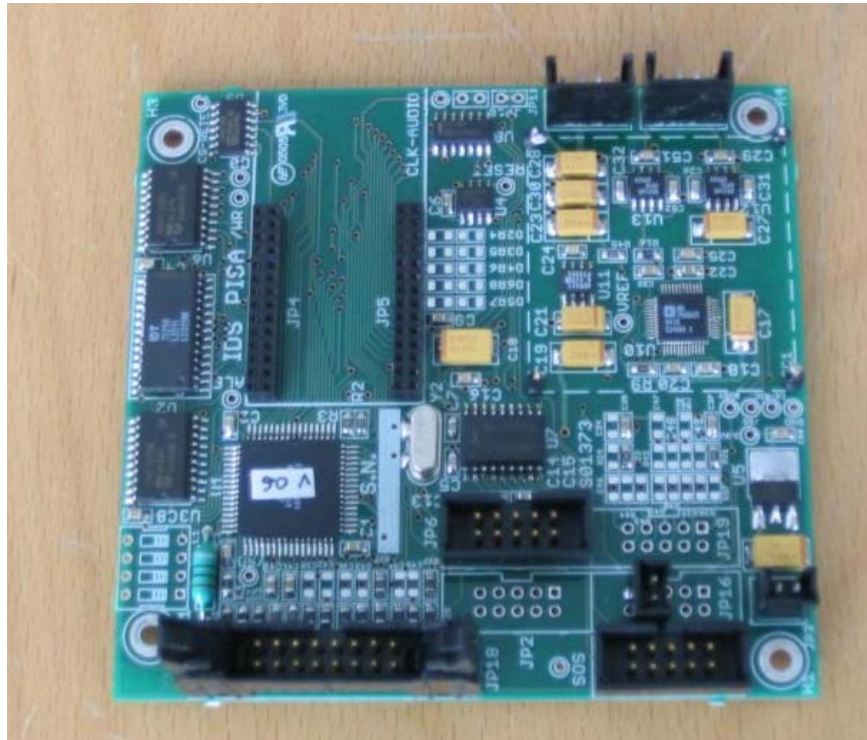


Fig. 12: A/D conversion board with shield removed (component side)

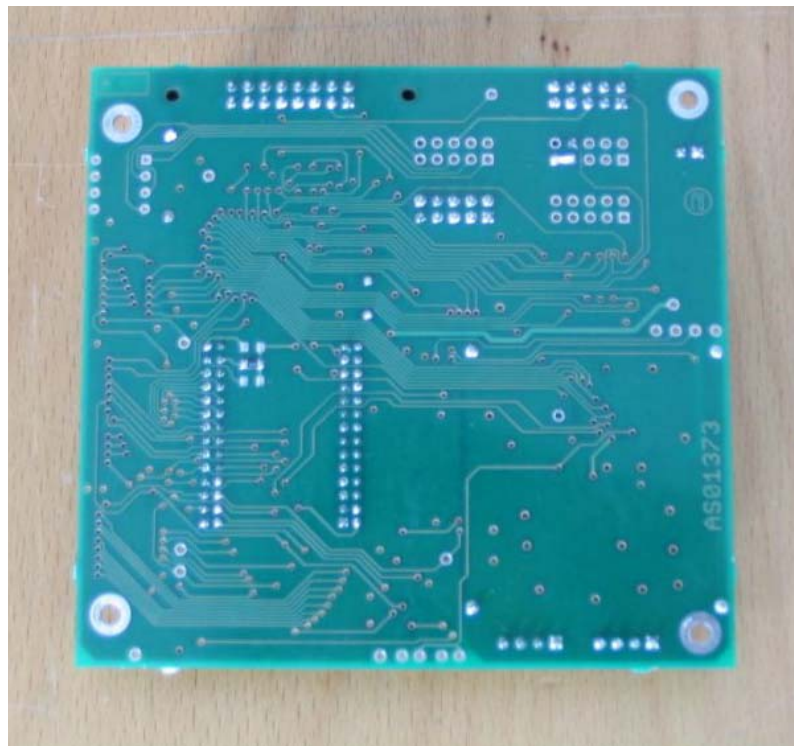


Fig. 13: A/D conversion board (bottom side)