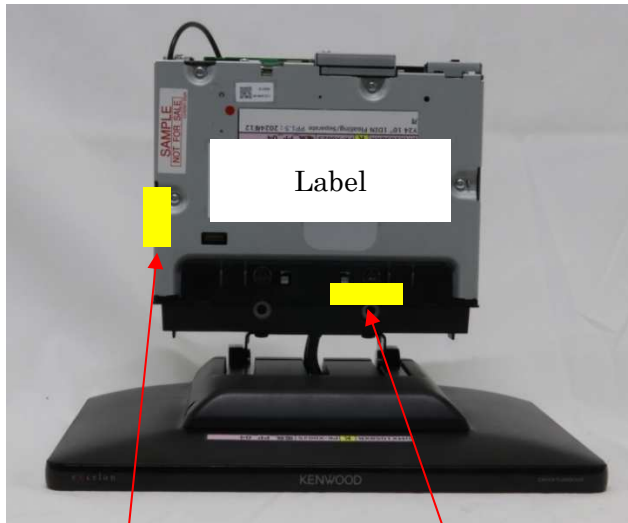


## DMX1058XR

### Antenna Location

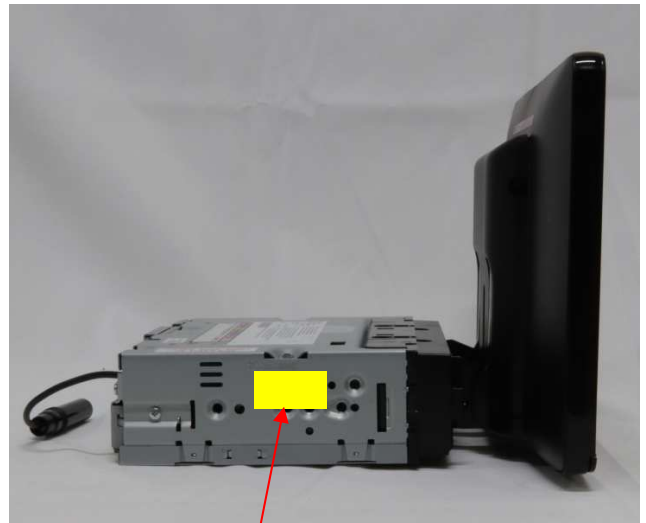
Top view



Antenna0 is located behind the case

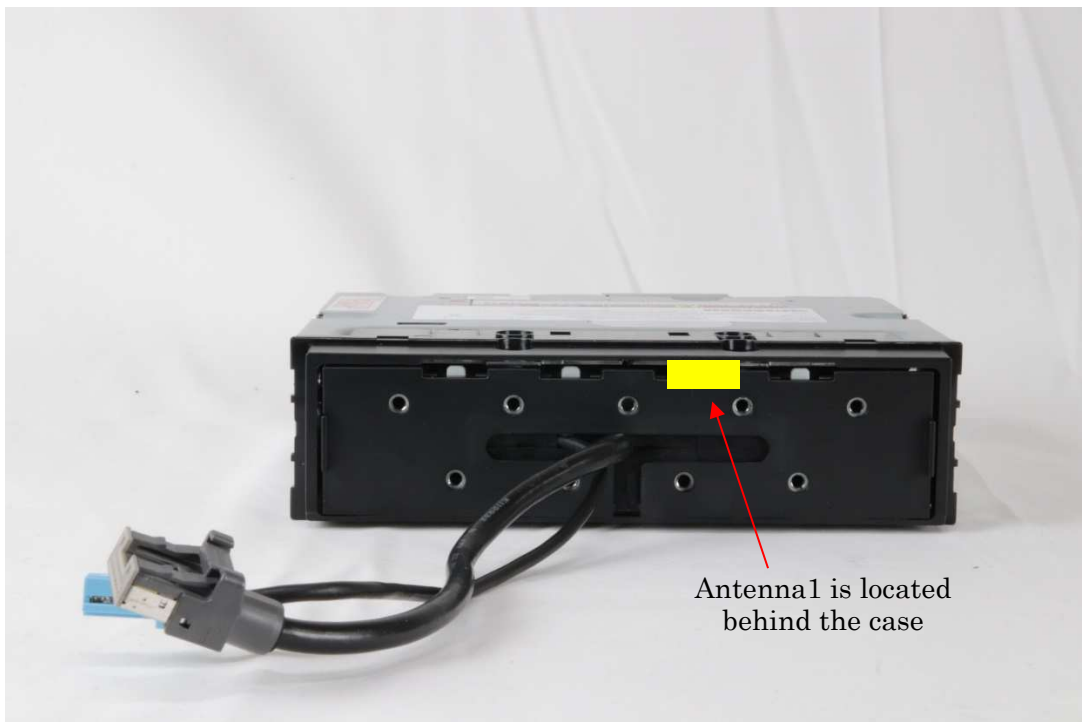
Antenna1 is located behind the case

Side view (Left)



Antenna0 is located behind the case

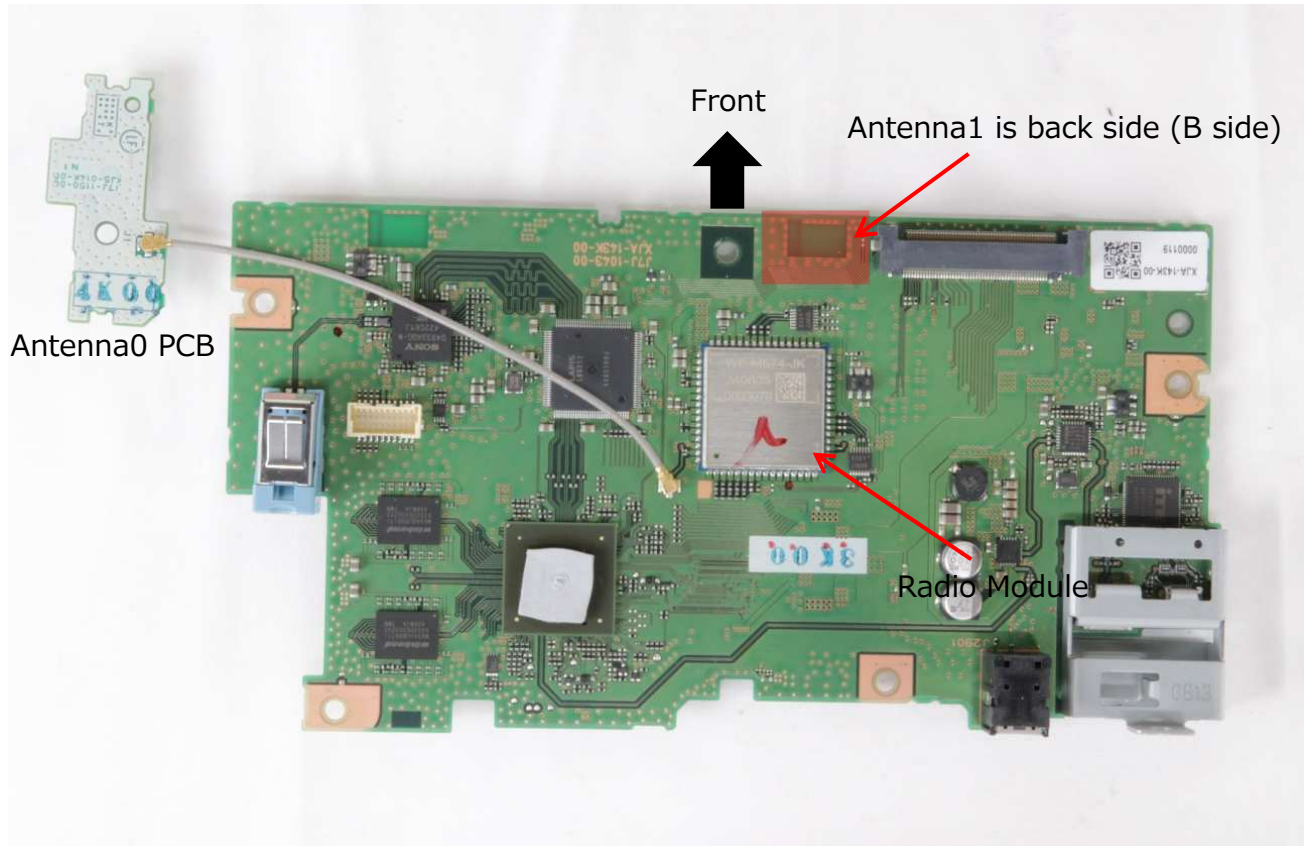
### Front panel (remove the monitor)



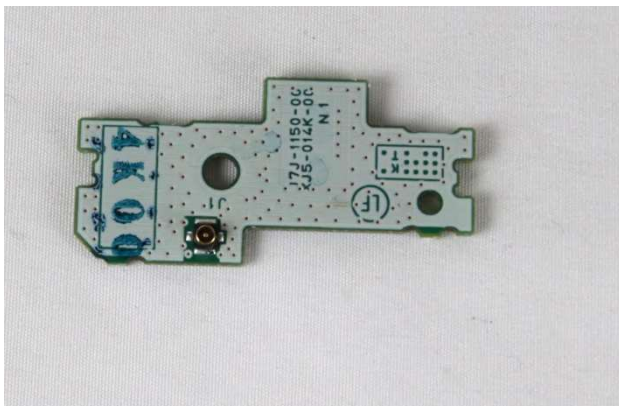
Antenna1 is located behind the case

## DMX1058XR

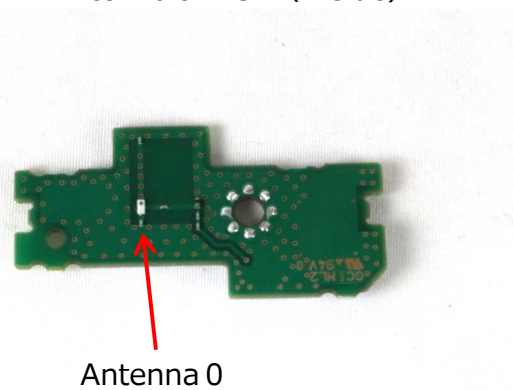
PCB(A-side) with Radio module



Antenna 0 PCB (A side)

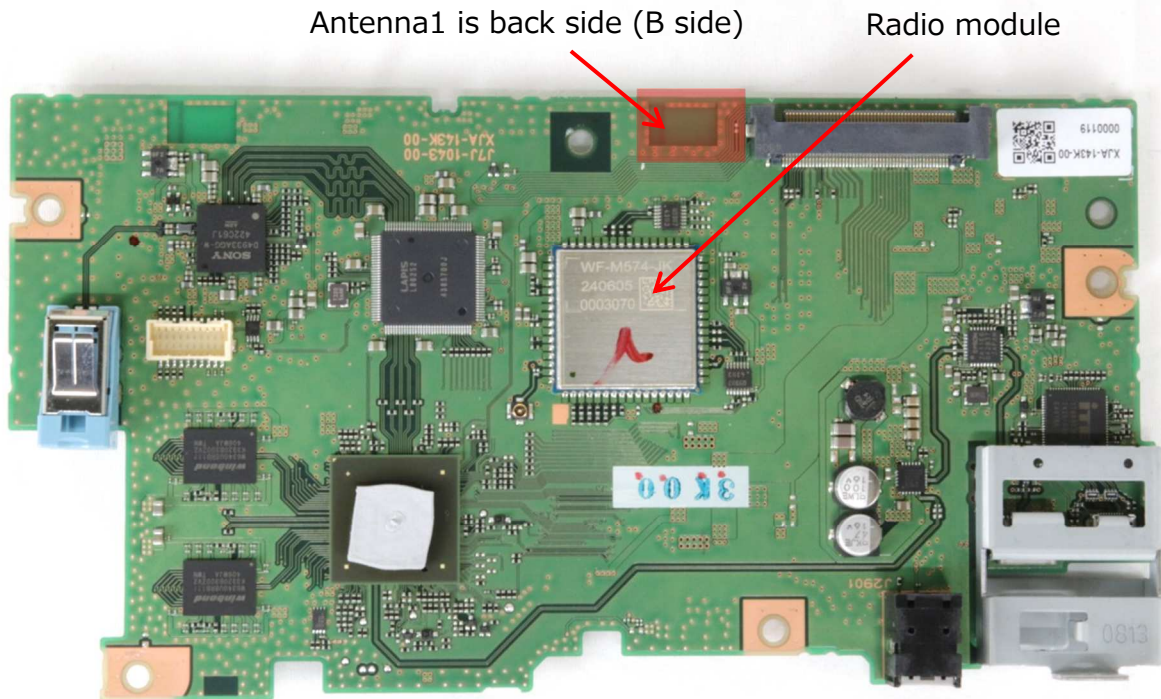


Antenna 0 PCB (B side)

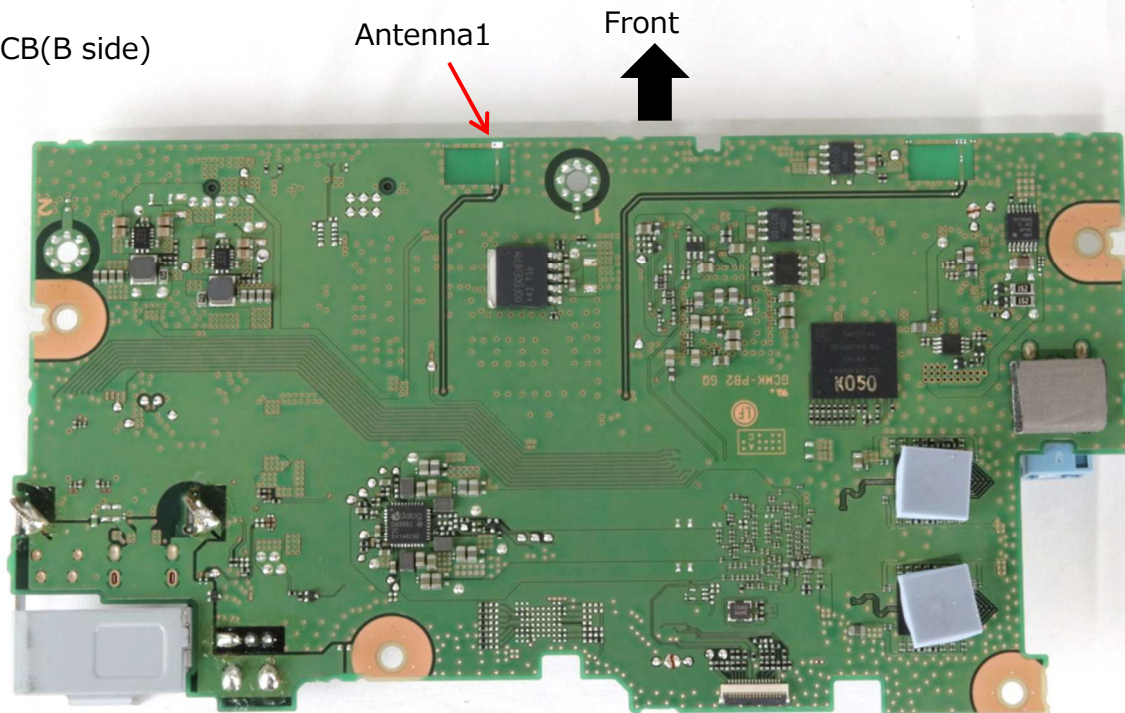


# DMX1058XR

PCB(A-side)



PCB(B side)





## Setup Photo : DMX1058XR

Antenna Radiated pattern

