

Antenna Specification

Brand: E-Lead

Model: EL-827C-FMA1

Antenna type: Coupled Antenna

Connector type: i-pex(MHF)

Frequency Range: 2.4 ~ 2.5GHz

5.15 ~ 5.85GHz

Impedance: 50 Ohm

VSWR: 2.5Max

Peak Gain: 1.3dBi

Admitted Power: 1W

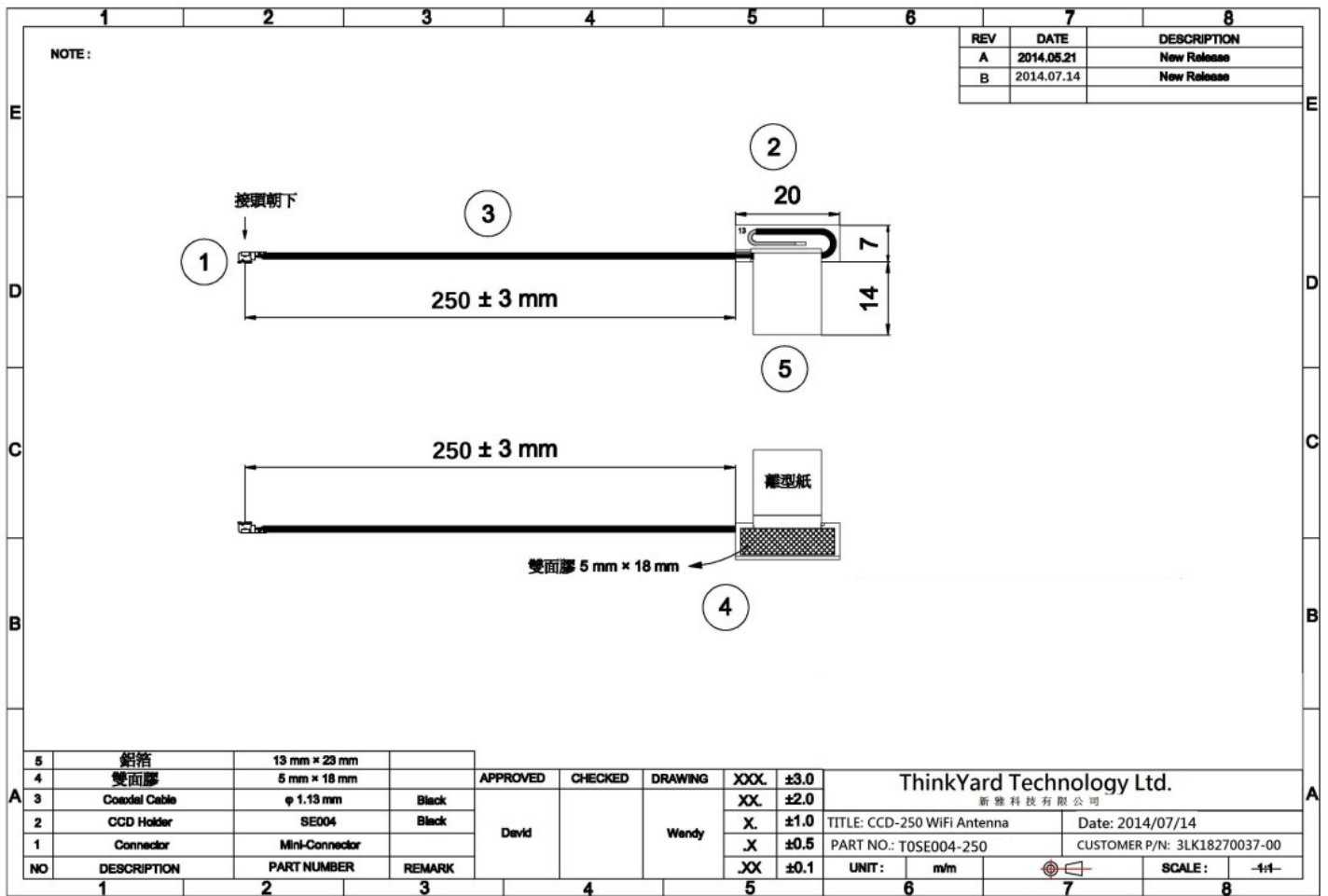
Operating Temperature: -40°C ~85°C

Storage Temperature: -40°C ~85°C

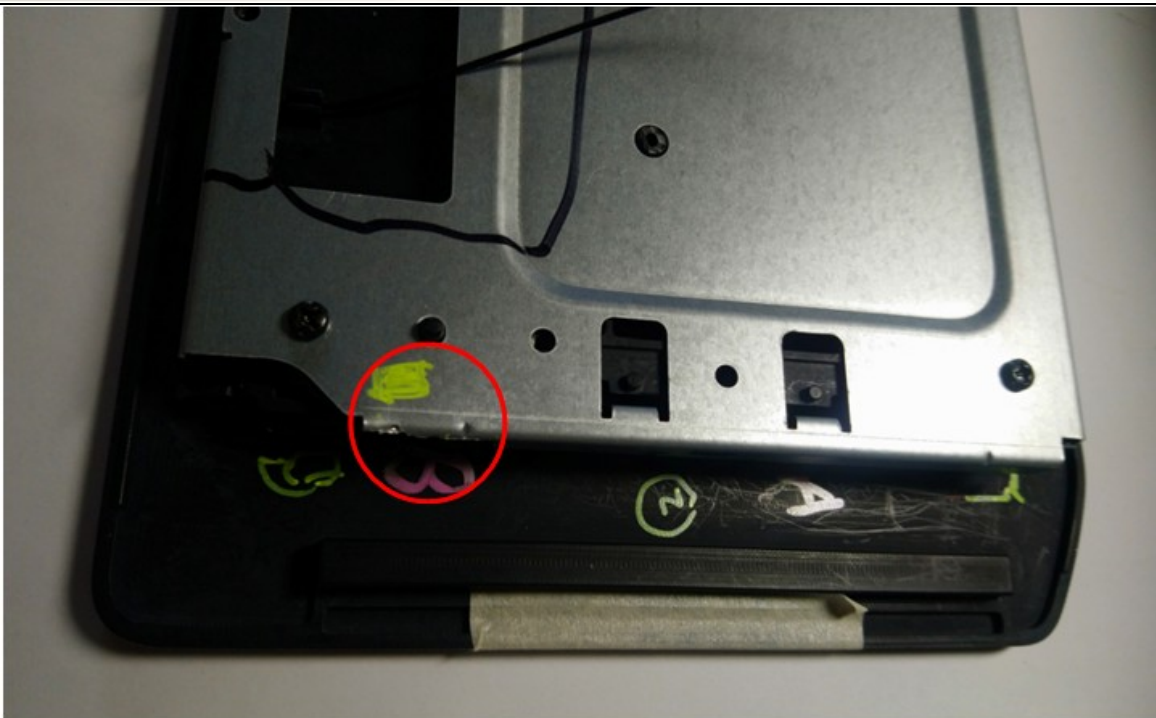
Manufacturer: ThinkYard Technology Ltd.

Manufacturer address: 6F, No. 26, Lane 27, Zhongxiao Road,
Hsinchu City

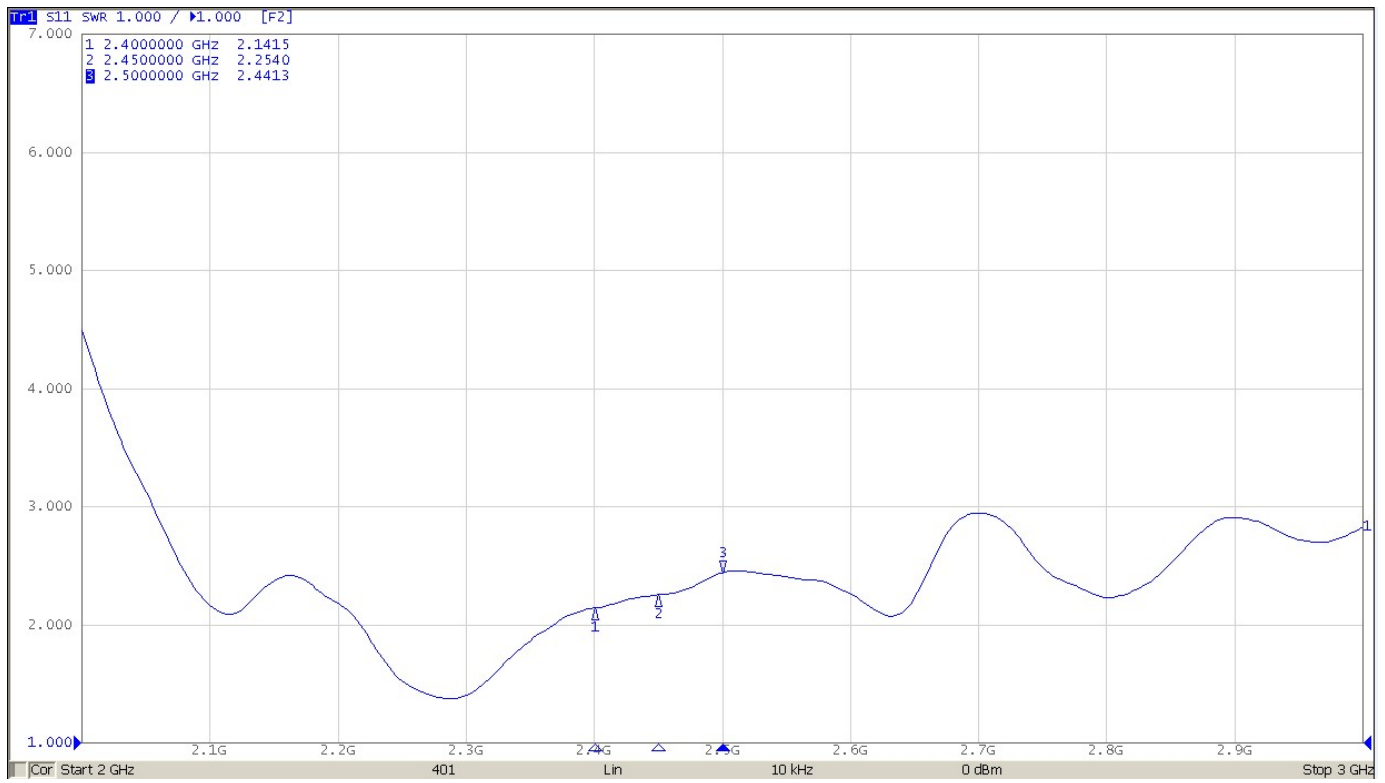
Antenna diagram



Antenna installation environment



Antenna VSWR

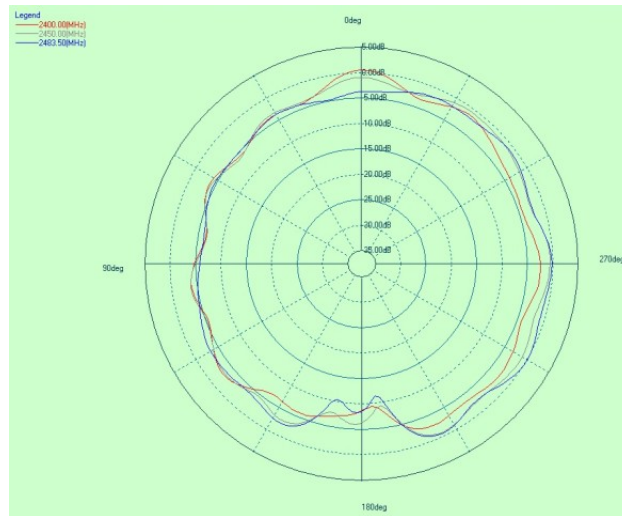


Antenna Radiation Efficiency

Frequency	Peak Gain (dBi)	Efficiency	Spec. > 30%
2400MHz	1.3	42.3%	PASS
2450MHz	0.26	40.8 %	PASS
2500MHz	0.39	39.5 %	PASS

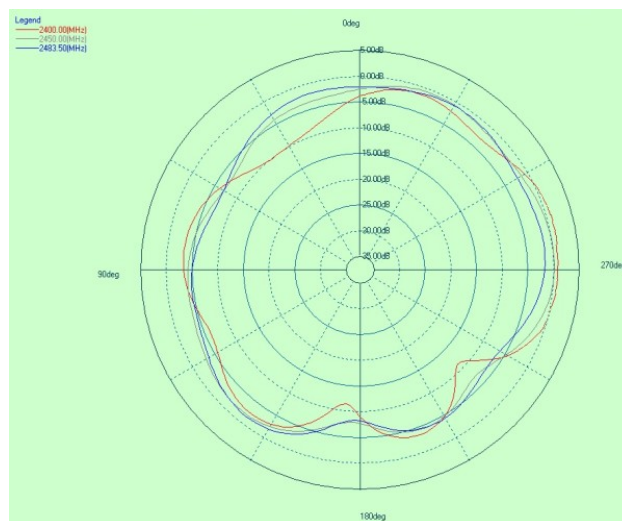
Antenna XY plane pattern

Null < -20dB 15° **PASS**



Antenna YZ plane pattern

Null < -20dB 15° **PASS**



Antenna XZ plane pattern

Null < -20dB 15° **PASS**

