

File : c:/idx3/SYSTEM/SARMEAS3/data/Normal/98060406_AREA.VLT
Start : 4-Jun-98 09:36:07 am End : 4-Jun-98 09:48:42 am

Radio Type : MOTO 1900
Model Number : SUG1174A
Serial Number : H501J6YP
Frequency : 1850.2 MHz
Peak Trans. Pwr : 29.0 dBm
Start Trans. Pwr: 29.0 dBm
Antenna Type : Helical
Antenna Posn. : In
Phantom Type : Head
Phantom Posn. : Right Ear
Scan Type : AREA
Probe Name : E022
Field Type : E Field
Orientation : 0 Degrees

Mixture Type = Brain
Mixture Dielectric Constant = 42.000
Mixture Conductivity = 1.300

Comment :
chn512/pwr0/wd1.30/sh

Robot : ROBOT1

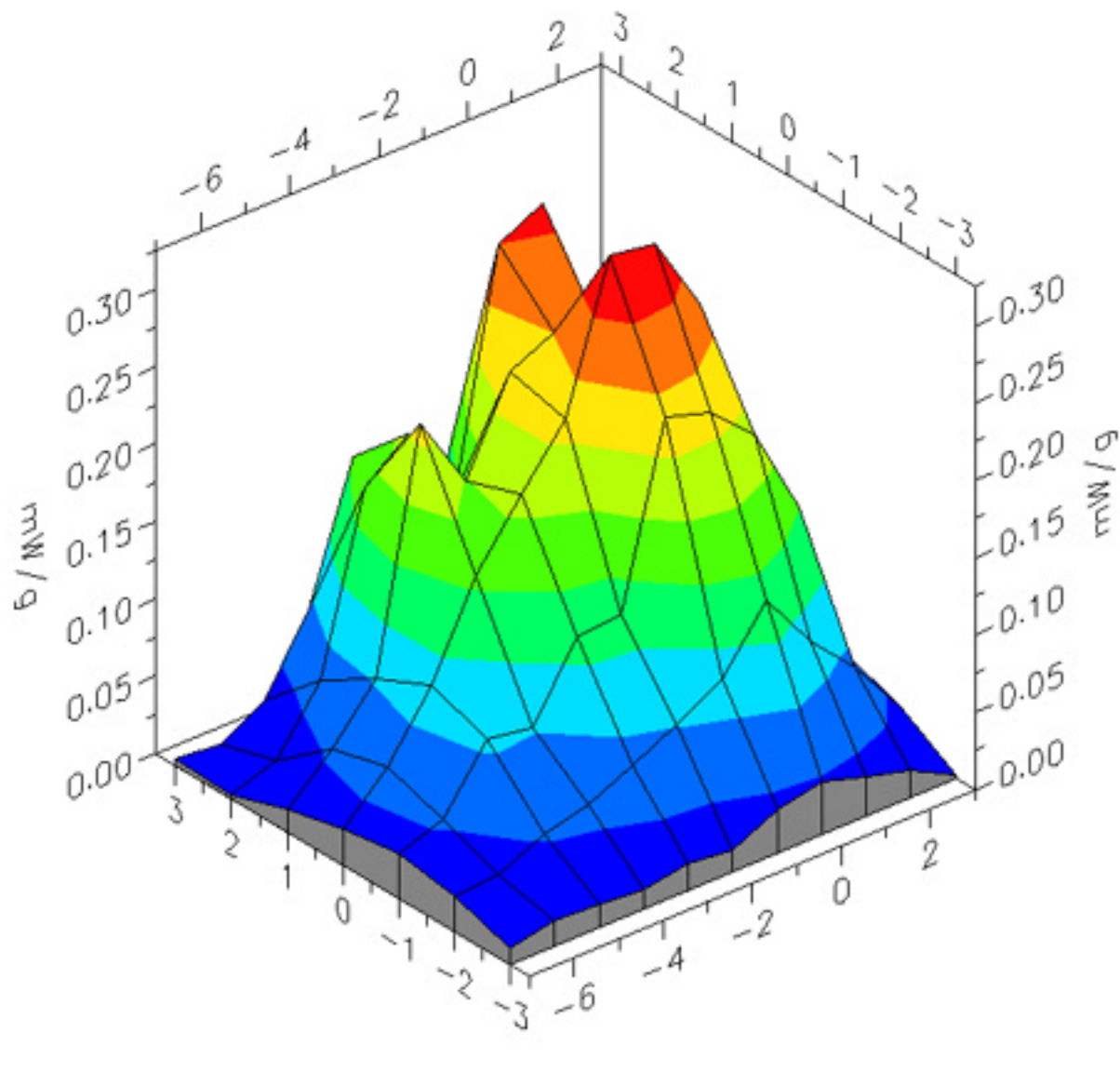
Probe Offset = 0.28 cm
Sensor Factor = 0.0108
Conversion Factor = 0.640

E022 Amplifier Channel Settings : 0.162 0.154 0.139

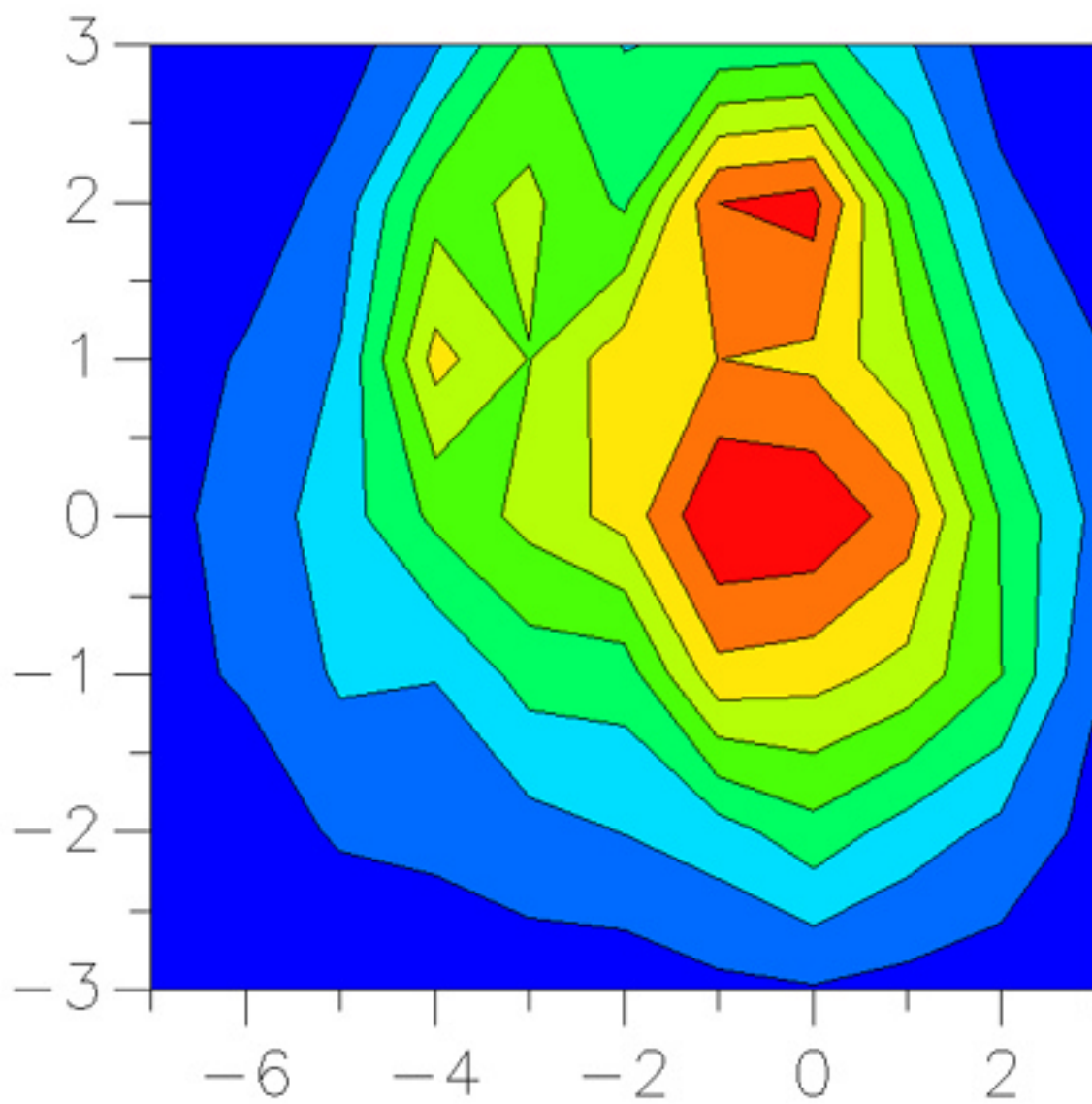
Max Location : X = -1.000, Y = 0.000, Z = 0.000 (cm) Value = 5.431

Area too wide. SAR value not calculated. Will calculate on zoom scan.

File : 98060406_AREA.ULT



File : 98060406_AREA.ULT



X-Z Plane Slice Y=0.000

