

File : c:/idx3/SYSTEM/SARMEAS3/data/Normal/98060405_ZOOM.VLT
Start : 4-Jun-98 09:20:43 am End : 4-Jun-98 09:35:28 am

Radio Type : MOTO 1900
Model Number : SUG1174A
Serial Number : H501J6YP
Frequency : 1850.2 MHz
Peak Trans. Pwr : 29.0 dBm
Start Trans. Pwr: 29.0 dBm
Antenna Type : Helical
Antenna Posn. : Out
Phantom Type : Head
Phantom Posn. : Right Ear
Scan Type : ZOOM/SAR
Probe Name : E022
Field Type : E Field
Orientation : 0 Degrees

Mixture Type = Brain
Mixture Dielectric Constant = 39.000
Mixture Conductivity = 0.830

Comment :
chn512/pwr0/wd1.30/sh

Robot : ROBOT1

Probe Offset = 0.28 cm
Sensor Factor = 0.0108
Conversion Factor = 0.640

E022 Amplifier Channel Settings : 0.162 0.154 0.139

Max Location : X = -0.250, Y = 0.500, Z = 0.000 (cm) Value = 8.625

Measured Values (volts) =
8.134E-003 3.117E-003 1.549E-003 9.224E-004 3.054E-004 0.000E+000
0.000E+000 0.000E+000 0.000E+000 0.000E+000 0.000E+000

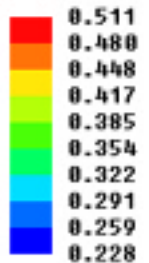
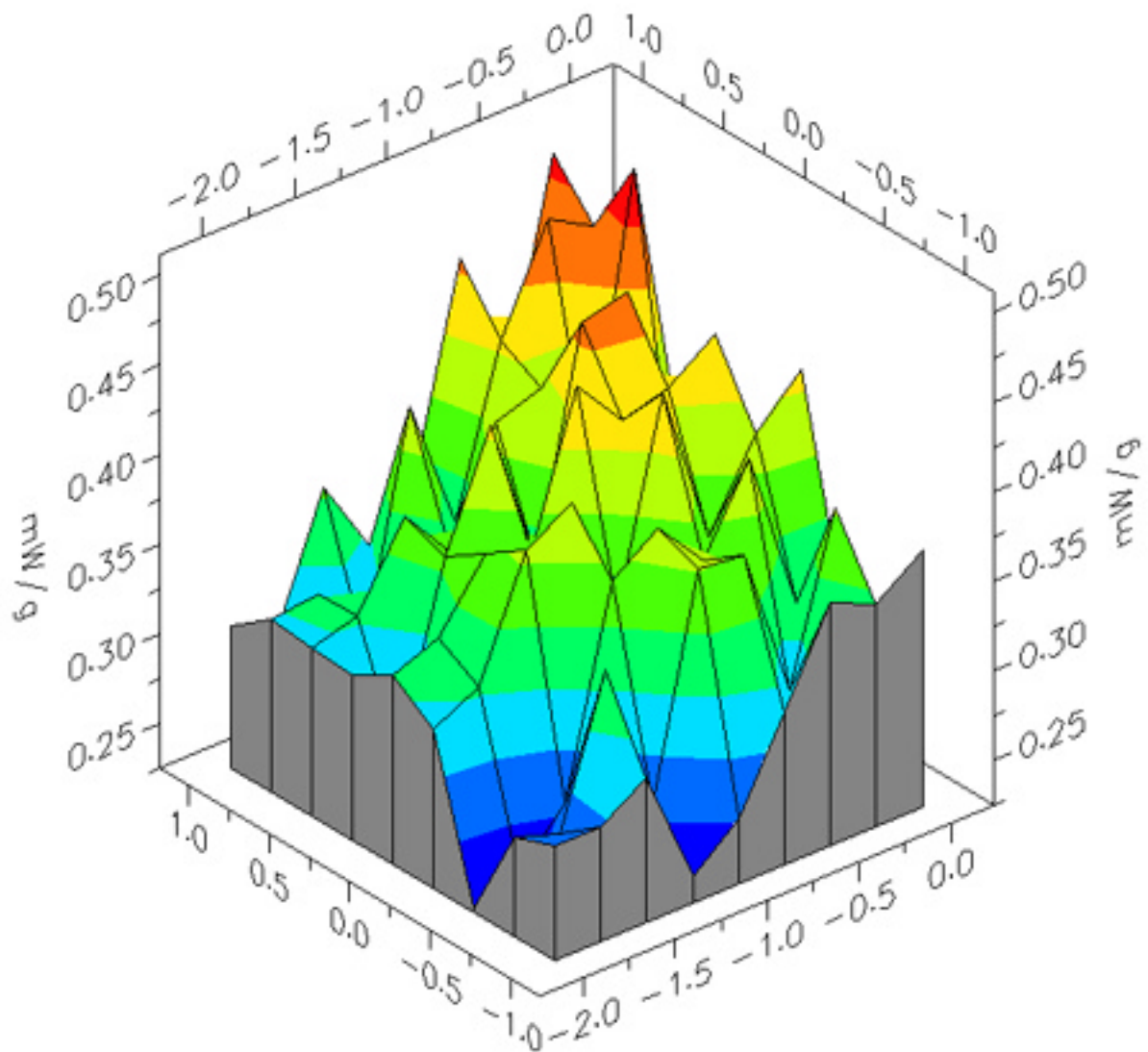
Calc. Voltage @ Surface (Vs) = 0.0130

Voltage @ 1.00 cm (Vt) = 0.0024

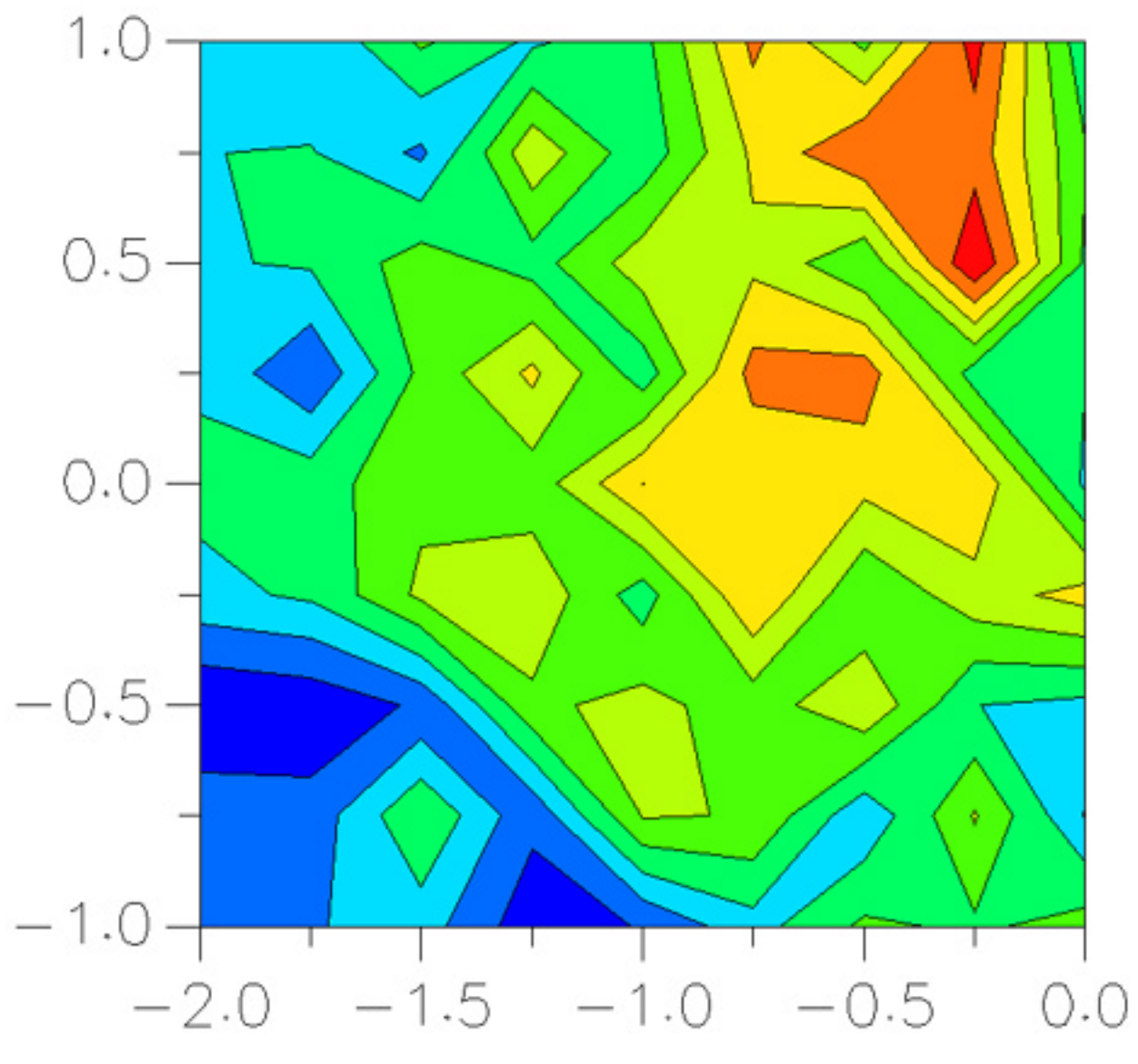
Ave. Voltage (Vs+Vt)/2 = 0.0077

Ave. SAR over 1 g (mW/g) = 0.4572

File : 98060405_200H.ULT



File : 98060405_200H.ULT



SAR Scan

