

File : /idx3/system/sarmeas2/data/Proto/irid1hoZ.VLT
Start : 15-Apr-98 09:44:29 am End : 15-Apr-98 09:56:07 am

Radio Type : Iridium
Model Number : SWF3178A
Serial Number : prototype
Frequency : 1621 MHz
Output Power : .6W averaged
Antenna Type : Circular
Antenna Posn. : Out
Phantom Type : Head
Phantom Posn. : Left Ear
Scan Type : ZOOM/SAR
Probe Name : p026
Field Type : E Field
Orientation : 0 Degrees

Mixture Type = Brain
Mixture Dielectric Constant = 40.00
Mixture Conductivity = 1.580

Comment :
Iridium phone head phantom; left ear
antenna in the extended position.

Robot : Robot

Probe Offset = 0.29 cm
Sensor Factor = 0.0108
Conversion Factor = 0.801

p026 Amplifier Channel Settings : 0.305 0.284 0.259

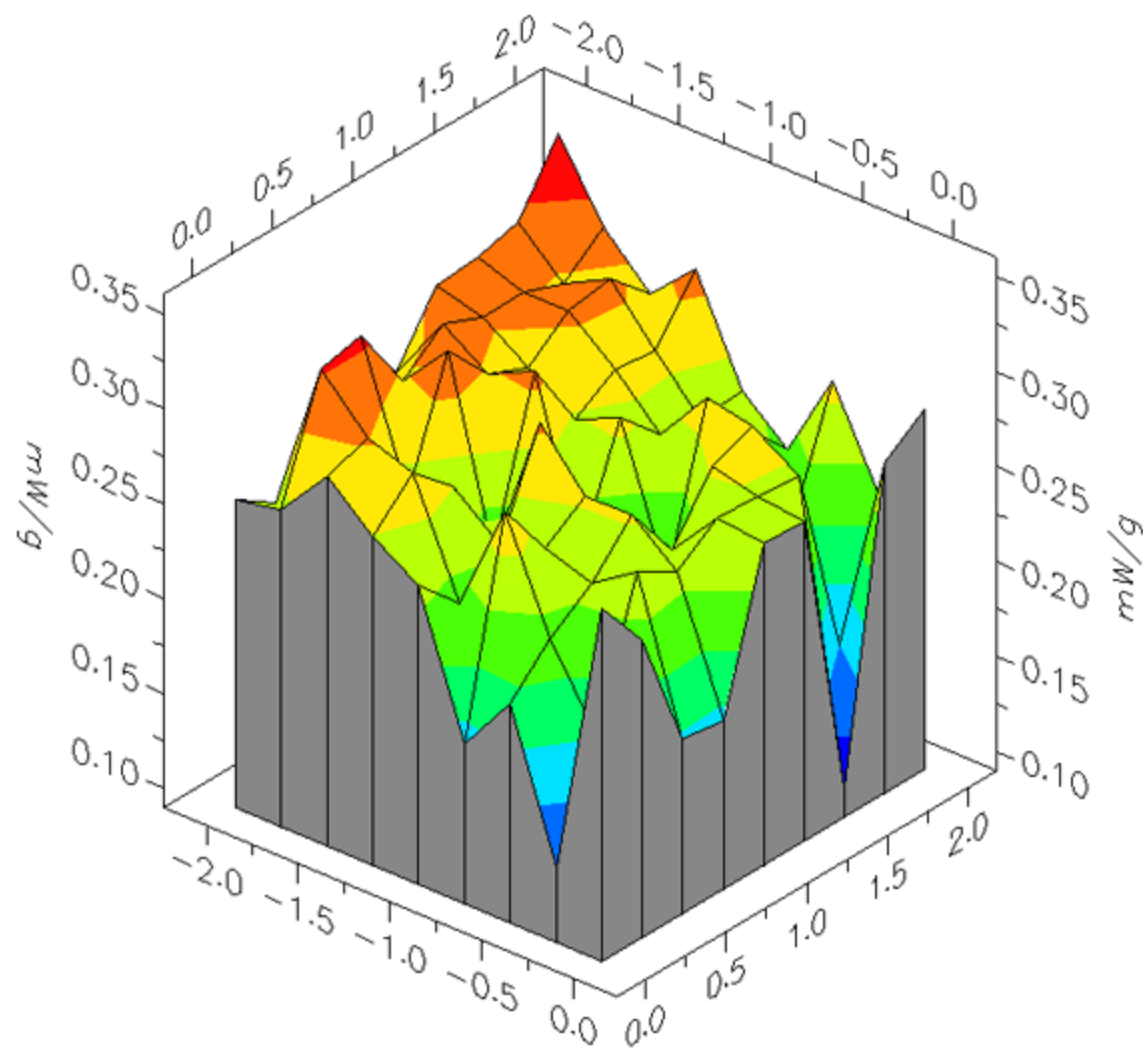
Max Location : X = -2.000, Y = 2.000, Z = 0.000 (cm) Value = 4.638

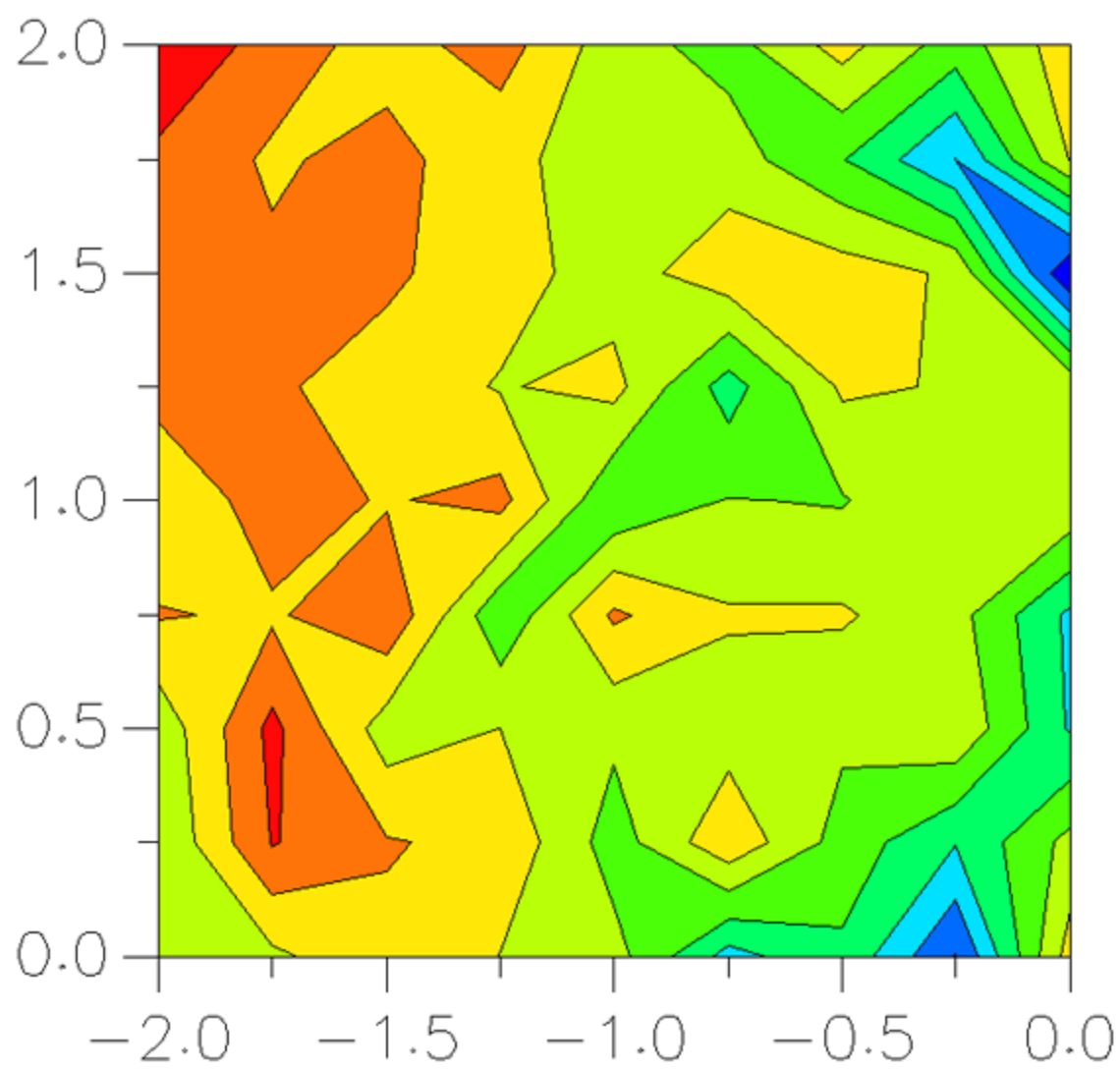
Measured Values (volts) =
3.793E-003 2.652E-003 2.292E-003 2.561E-003 1.813E-003 1.280E-003
2.748E-003 3.443E-003 3.237E-003 3.281E-003 2.992E-003

Peak Voltage = 0.0044

1 cm Voltage = 0.0025

SAR (mW/g) = 0.2560





SAR Scan

