

File : /idx3/system/sarmeas2/data/Proto/iridhiA.VLT
Start : 15-Apr-98 10:01:09 am End : 15-Apr-98 10:07:46 am

Radio Type : Iridium
Model Number : SWF3178A
Serial Number : prototype
Frequency : 1621 MHz
Output Power : .6W averaged
Antenna Type : Circular
Antenna Posn. : In
Phantom Type : Head
Phantom Posn. : Left Ear
Scan Type : AREA
Probe Name : p026
Field Type : E Field
Orientation : 0 Degrees

Mixture Type = Brain
Mixture Dielectric Constant = 40.00
Mixture Conductivity = 1.580

Comment :
Iridium phone head phantom; left ear
antenna in the retracted position.

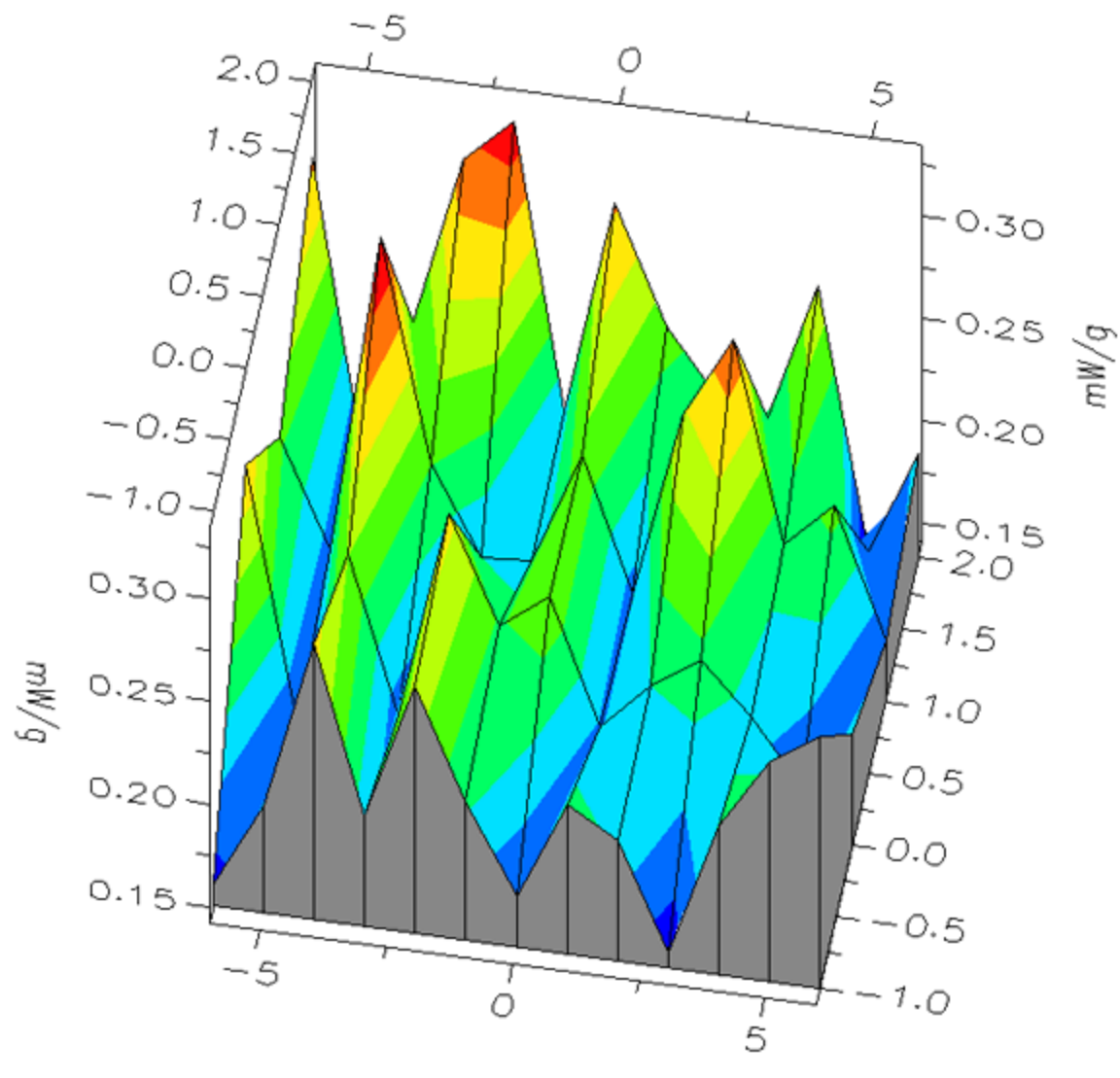
Robot : Robot

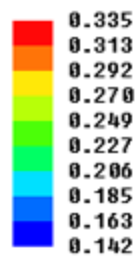
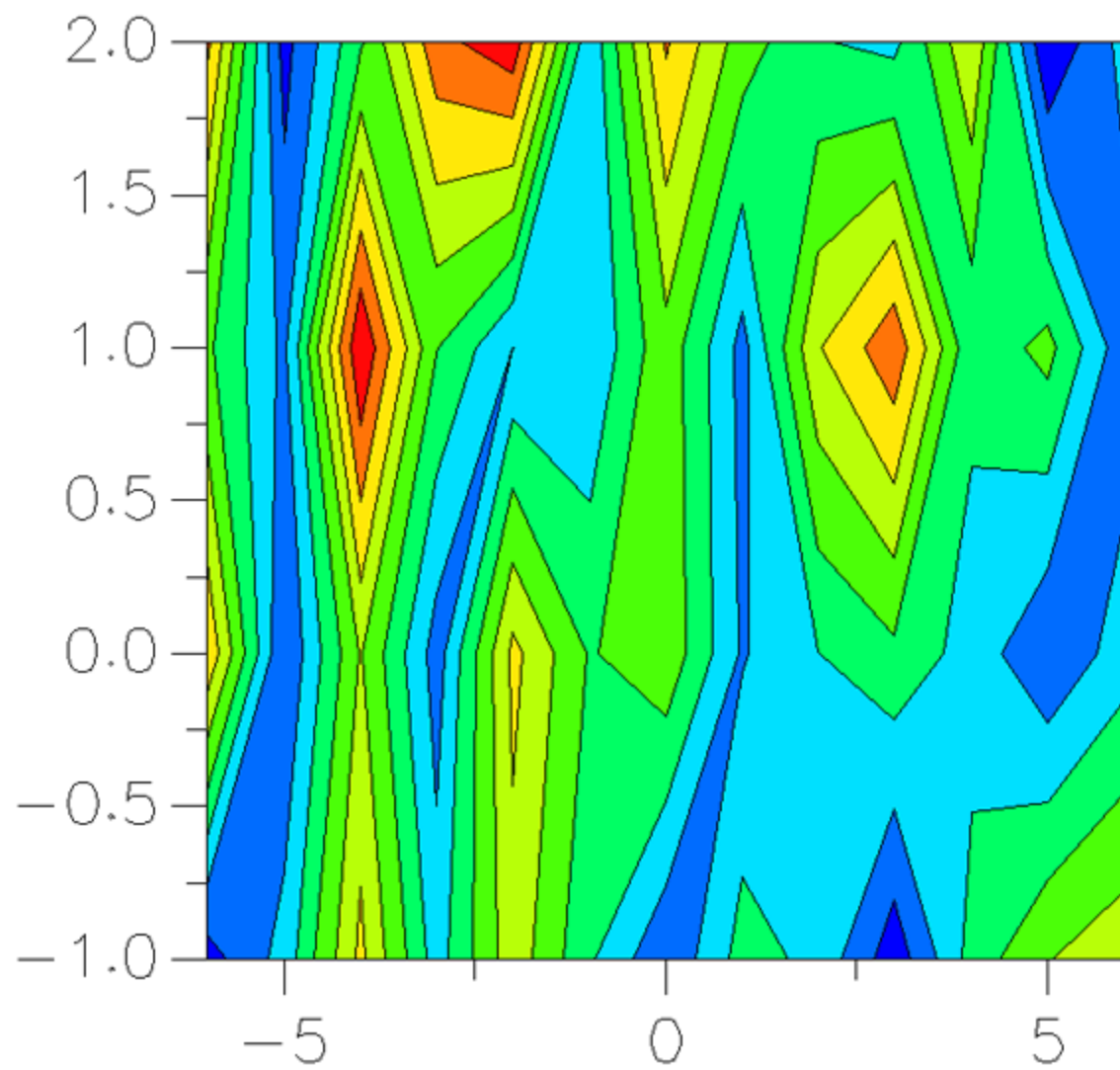
Probe Offset = 0.29 cm
Sensor Factor = 0.0108
Conversion Factor = 0.801

p026 Amplifier Channel Settings : 0.305 0.284 0.259

Max Location : X = -4.000, Y = 1.000, Z = 0.000 (cm) Value = 4.510

Area too wide. SAR value not calculated. Will be calculated in zoom scan.





X-Z Plane Slice $\Psi=1.000$ 