

File : /idx3/system/sarmeas2/data/Proto/iridhiZ.VLT
Start : 15-Apr-98 10:07:46 am End : 15-Apr-98 10:19:11 am

Radio Type : Iridium
Model Number : SWF3178A
Serial Number : prototype
Frequency : 1621 MHz
Output Power : .6W averaged
Antenna Type : Cicular
Antenna Posn. : In
Phantom Type : Head
Phantom Posn. : Left Ear
Scan Type : ZOOM/SAR
Probe Name : p026
Field Type : E Field
Orientation : 0 Degrees

Mixture Type = Brain
Mixture Dielectric Constant = 40.00
Mixture Conductivity = 1.580

Comment :
Iridium phone head phantom; left ear
antenna in the retracted position.

Robot : Robot

Probe Offset = 0.29 cm
Sensor Factor = 0.0108
Conversion Factor = 0.801

p026 Amplifier Channel Settings : 0.305 0.284 0.259

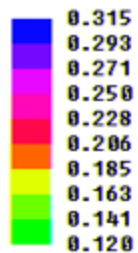
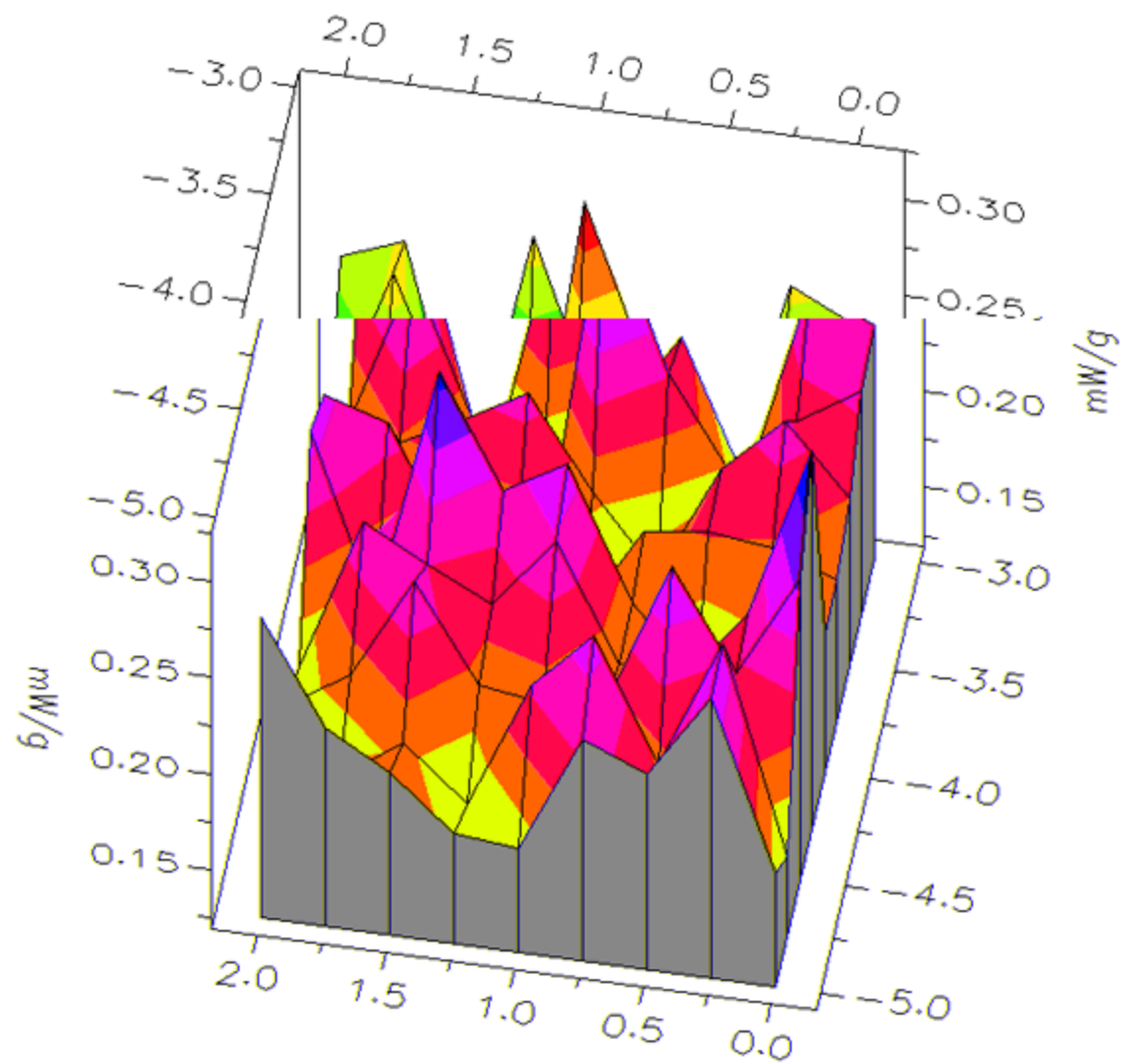
Max Location : X = -4.250, Y = 0.000, Z = 0.000 (cm) Value = 4.246

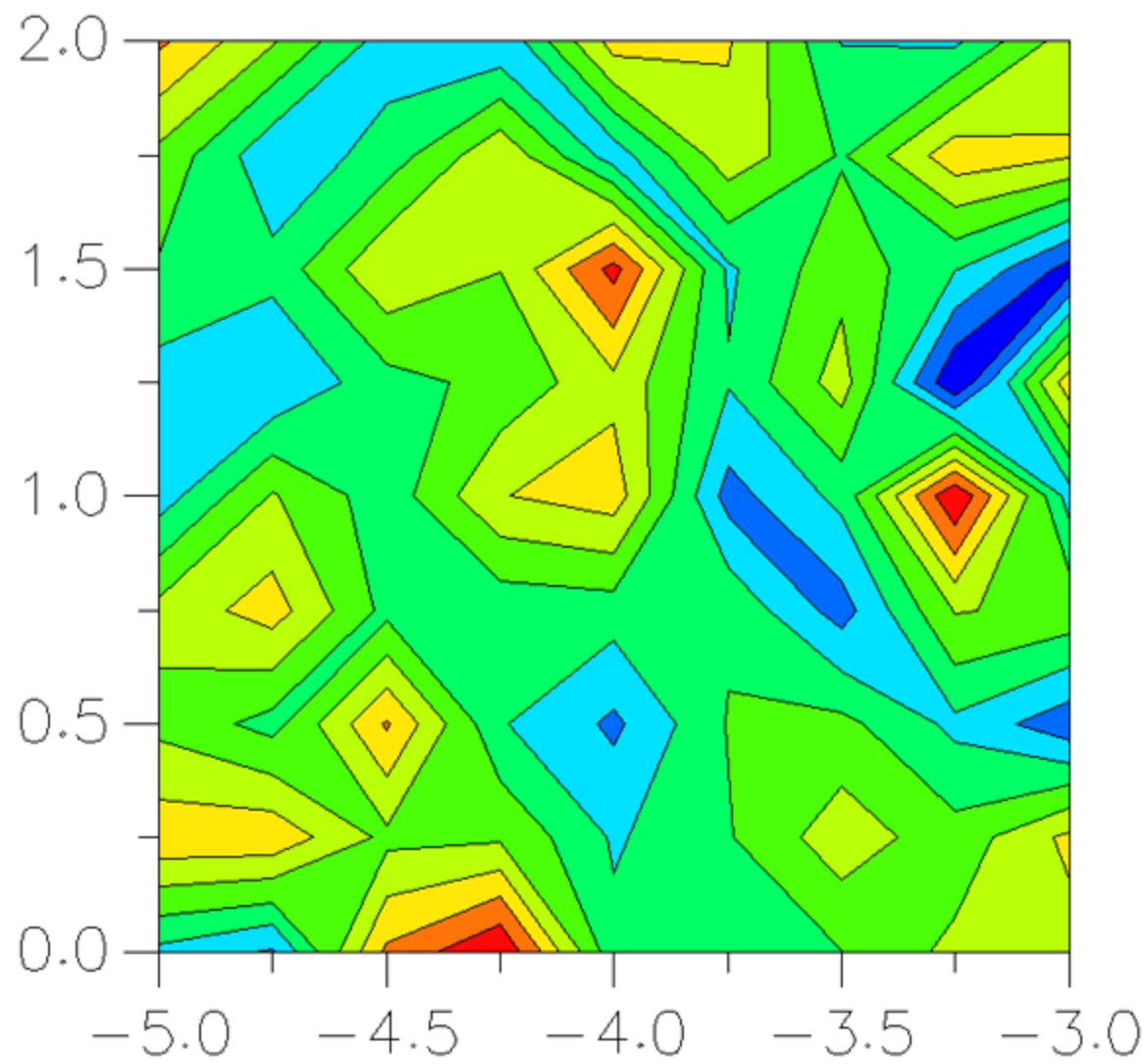
Measured Values (volts) =
3.488E-003 3.017E-003 2.913E-003 2.197E-003 2.809E-003 1.870E-003
2.033E-003 2.741E-003 2.902E-003 2.835E-003 2.183E-003

Peak Voltage = 0.0039

1 cm Voltage = 0.0023

SAR (mW/g) = 0.2296





SAR Scan

