



May 11, 1999

SAR Test Report for Motorola portable cellular phone (FCC ID IHDT6NB1).

Prepared by:

Paul Moller, Principal Staff Engineer

Motorola Personal Communications Sector Product Safety Laboratory

Libertyville, Illinois

## Contents

- 1) Introduction
- 2) Applicable Regulations
- 3) Description of Test Sample
- 4) Description of Motorola SAR Test Facility
- 5) Test Sample Conditions
- 6) Method of Measurement
- 7) Measurement Uncertainty
- 8) SAR Test Results
- 9) Summary

Appendix A: Included data

Appendix B: Measurement Probe Calibration Certificate

Appendix C: Printout from the Dasy™ measurement system validation test

Appendix D: Dasy™ Users Manual (first page)

## 1. Introduction

The Motorola Personal Communications Sector Product Safety Laboratory has performed measurements of the maximum potential exposure to the user of portable cellular phone module, FCC ID IHDT6NB1. The Specific Absorption Rate (SAR) of this product was measured. This report details the test setup and equipment as well as the results of those tests.

## 2. Applicable Regulations

Federal Communications Commission rule §2.1093(d)(2), the ANSI/IEEE C95.1 1992 and the NCRP Report Number 86 specify the maximum exposure limit of 1.6 W/kg as averaged over any 1 gram of tissue for portable devices being used within 20cm of the user in the uncontrolled environment.

## 3. Description of Test Sample

A prototype unit serial number 120399-13A was measured. This unit is identical in physical construction, maximum radiated power levels and antenna structure to units that will be in production. The portable cellular phone is a transceiver module that has been designed to be mechanically inserted into an IRIDIUM™ communications system handset, and can function as a self contained RF transceiver module to provide alternative terrestrial cellular service to the IRIDIUM™ handset. A picture of the module is shown as figure 1. It transmits in the frequency range of 1850 to 1910 MHz using CDMA (digital) mode only. The reported maximum peak transmit EIRP for this test unit is 0.39 Watts as defined in FCC Rule §24.232. The unit was tested at its maximum transmitter power, which is nominally a peak conducted power of 0.25 Watt.



Figure 1. Transceiver Module, FCC ID: IHDT6NB1

The module is equipped with a telescoping antenna that serves as both a receive and transmit antenna. The antenna has a retracted and an extended operating position and is shown installed in the IRIDIUM™ handset as figures 2 and 3 respectively. Since the module inserts into the back side of the IRIDIUM™ communications system handset, a view of the back of the complete package is shown in figure 4. Note that in figure 4 the IRIDIUM™ antenna is in its

stowed, or unused, position. Figure 5 is the same as figure 4 only with the IRIDIUM™ antenna removed and a dust cover inserted in the IRIDIUM™ handset phone's antenna socket.



Figure 2. IRIDIUM™ handset with module antenna retracted



Figure 3. IRIDIUM™ handset with module antenna extended



Figure 4. IRIDIUM™ handset and antenna, with module antenna extended



Figure 5. IRIDIUM™ handset (antenna removed), with module antenna extended

Figures 6 and 7 show the test unit as it is placed onto the phantom head with the module's antenna in the retracted and extended positions respectively. For the purposes of the actual SAR tests the Motorola phantom head is tilted on its side by 90 degrees so that a vertically oriented measurement probe can easily scan an area where the phone is in close contact with the phantom and the SAR will be the highest.



Figure 6. Test position with antenna retracted



Figure 7. Test position with antenna extended

#### 4. SAR Test Facility

The Motorola test facility utilized for the SAR testing of this product is the Personal Communications Sector Product Safety Laboratory, in Libertyville Illinois. The laboratory utilizes a Dosimetric Assessment System (Dasy™) SAR measurement system manufactured by Schmid & Partner Engineering AG (SPEAG™), of Zurich Switzerland. This system utilizes a computer controlled six axis robot to move a measurement probe to measure the SAR. A photo of the Dasy™ system with the Motorola phantom is shown in figure 8. Probe serial number 1005 was used for the measurements. It was calibrated at SPEAG™, and has a calibration date June 12, 1998. A copy of the calibration certificate is included as appendix B. Dipole Validation Kit type D1800V2, serial number 226 was used to validate the system accuracy. The validation SAR value is 39.9 mW/g normalized to 1 Watt, and the Dasy™ system used for the test phone measured 40.4 mW/g normalized to 1 Watt. This is within the required accuracy, and thus the measured SAR values are considered correct. See appendix C for printout of the validation test from the Dasy™ measurement system. The measurement methodology is described in IEEE Transactions on Vehicular Technology, vol. 44, no. 3, August 1995, titled Electromagnetic Energy Exposure of Simulated users of Portable Cellular Telephones. The Dasy™ system is

operated per the instructions in the Dasy™ Users Manual. A copy of the title page of this manual is included as appendix D. The entire manual is available directly from SPEAG™.



Figure 8. Motorola's SAR Measurement System

## 5. Test Sample Conditions

For the purposes of these tests the subject phone and module was positioned on the measurement phantom per the instructions in the Motorola users manual. SAR was measured with the module's antenna in both the retracted and extended positions. The position used for the tests is the 3-point contact position. In this position the test sample contacts the phantom's ear and cheek and is positioned with a repeatability of better than  $\pm 6\%$ . Since the antenna is not located on the center of the phone, the SAR was measured with the phone on both the left and right side talk positions (See figures 6 and 7). Due to the construction of the phone, the base of the module's antenna is 51 mm away from the phantom for the right side head, which is the closest.

The test module is capable of operation in a test mode that allows control of the transmitter without the need to place actual phone calls. This guarantees that the module does not change its transmitter power, and that the resultant SAR values will not be affected by external

connections. For the purposes of this test the module is commanded to test mode and manually set to the proper channel, transmitter power level and transmit mode of operation. The subject phone and module are then placed in the SAR measurement system with a fully charged battery. At the end of each test the Dasy™ system measures the drift of the SAR at a fixed point in the phantom so as to ensure that the test sample has not changed in transmitter power. For the purposes of these tests, the transmitter was operated at the highest transmitter output and with the phone and module on both left and right side talk positions.

## 6. Method of Measurement

The system is instructed to scan as much of the face of the phone as is in close proximity to the phantom. Using the information gained about the general region of highest SAR, the system then automatically scans a smaller area centered around the location of peak spatial SAR. During this scan the system automatically measures the fall off of electric field strength as the measurement probe is moved away from the inner surface of the phantom in the direction of the local normal to the phantom surface. Using appropriate probe calibration techniques, the SAR in 1 gram of phantom tissue is then calculated. The phantom head, shown in figures 6 and 7, was filled with a liquid having relative dielectric constant equal to 41 and conductivity equal to 1.71 S/m. This mixture is a good dielectric equivalent of the gray matter of the human brain. The composition of the liquid mixture is as follows: 45.9% water; 53.0% sugar; 0% salt, 1% HEC; and 0.1% bactericide.

## 7. Measurement Uncertainty

The overall RMS uncertainty of the measurement system is  $\pm 12.0\%$ . The breakdown of the individual uncertainties is as follows:

<b>Probe Uncertainty</b>	<b><math>\pm\%</math></b>
Isotropy error	7.2
Calibration error	3.3
Spatial resolution	0.5
<b>SAR Evaluation</b>	<b><math>\pm\%</math></b>
Conductivity measurement	5.0
Environmental errors	1.0
<b>Peak SAR Evaluation</b>	<b><math>\pm\%</math></b>
Probe positioning	1.0
Volumetric averaging	4.2
Device positioning	6.0

## 8. SAR Test Results

Figure 9 shows the phone overlaid with a typical contour plot. Also shown in Figure 9 are cross hair lines showing the -X and +Y axes and directions. The intersection of these lines represents

the 0,0 location, or origin. The phone is placed on the phantom's head with the origin at the center of the ear, and the center line of the phone extends downward to the center of the phantom's mouth. The same origin, axes and phone position are used for left and right side talk positions.

The maximum SAR level for the Motorola portable cellular phone (FCC ID IHDT6NB1) is 0.22 W/kg and was found to be with the antenna extended on the right side head. A full data set output of two test conditions with the highest SAR values from the Dasy™ measurement system is included as appendix A. The test conditions included are indicated as bold numbers in the following table. All other test conditions measured lower SAR values than those included.

	<i>Left side head</i>		<i>Right side head</i>		
	Antenna	Antenna	Antenna	Antenna	Conducted
Channel	Retracted	Extended	Retracted	Extended	Transmit Power
<b>25</b>	<b>0.14</b>	0.11	0.05	<b>0.22</b>	25.2 dBm
<b>600</b>	0.02	0.18	0.04	0.20	25.3 dBm
<b>1175</b>	0.05	0.01	0.04	0.07	25.0 dBm

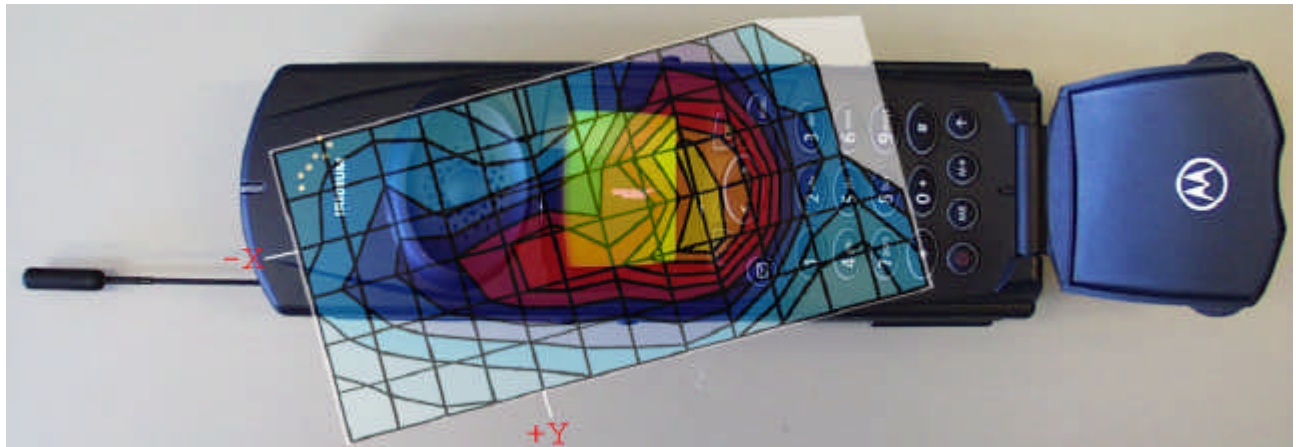


Figure 9. Test unit with contour plot

## 9. Summary

The SAR values found for the portable cellular phone (FCC ID IHDT6NB1) are below the maximum recommended levels of 1.6 W/kg.

## Appendix A

The following pages are printouts from the Dasy™ measurement system of the data as indicated.

03/12/99

# SWF0240A S/N 120399-13A

CDMA 1900MHz TRC/Ch25

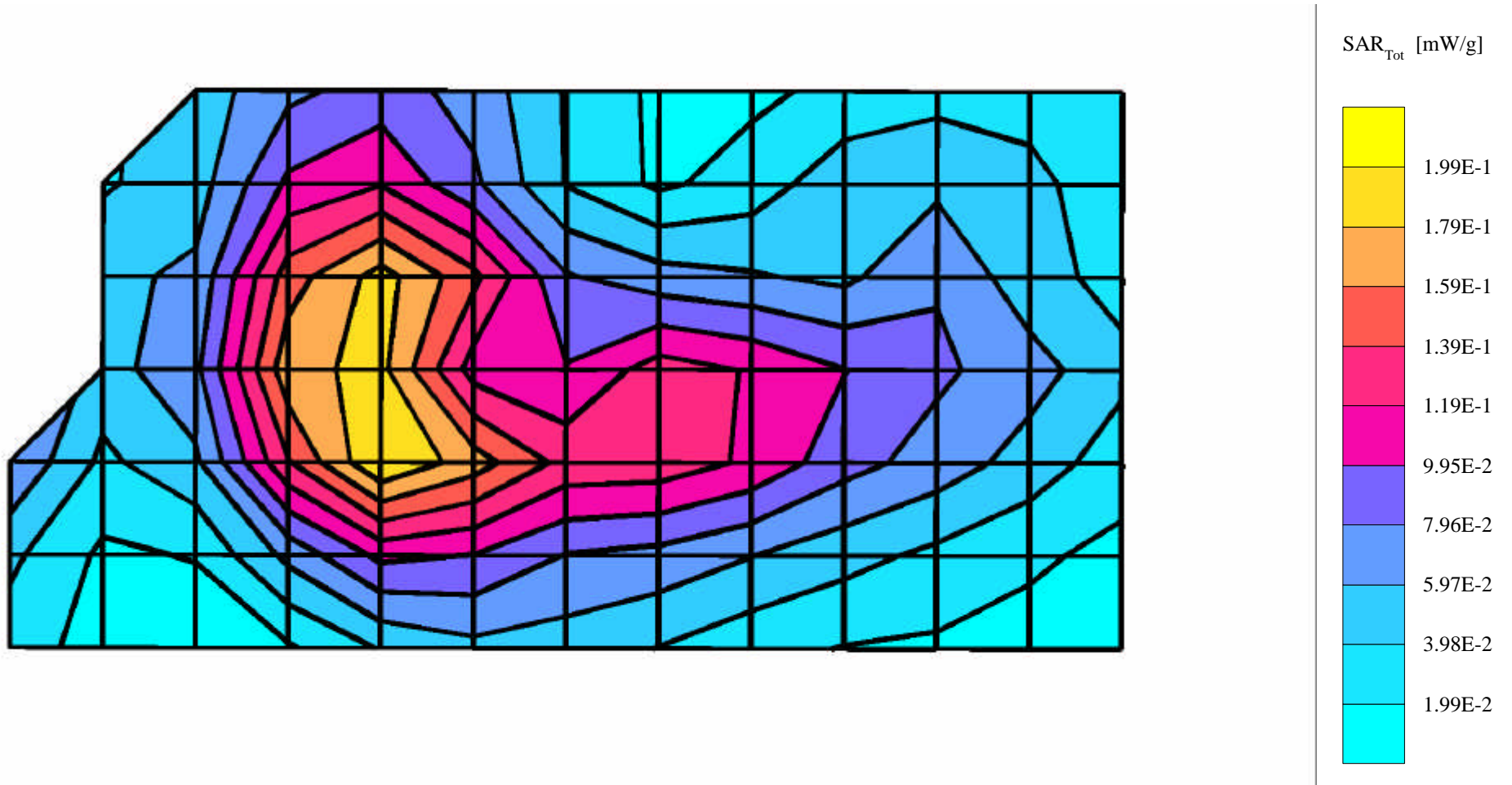
MOTO Right Phantom; Section; Position: ; Frequency: 1851 [MHz]

Probe: ET3DV4 - SN1005 (DAE2); ConvF(5.10,5.10,5.10); Crest factor: 11.0; Brain 1900 MHz:  $\sigma = 1.71$  [mho/m]  $\epsilon_r = 41.0$   $\rho = 1.00$  [g/cm<sup>3</sup>]

Cube 5x5x7: SAR (1g): 0.224 [mW/g], SAR (10g): 0.124 [mW/g], (Worst-case extrapolation)

Coarse: Dx = 10.0, Dy = 10.0, Dz = 10.0

Powerdrift: 1.67 dB



03/11/99

# SWF0240A S/N 120399-13A

CDMA 1900MHz TRC/ Ch25 / Pwr 0

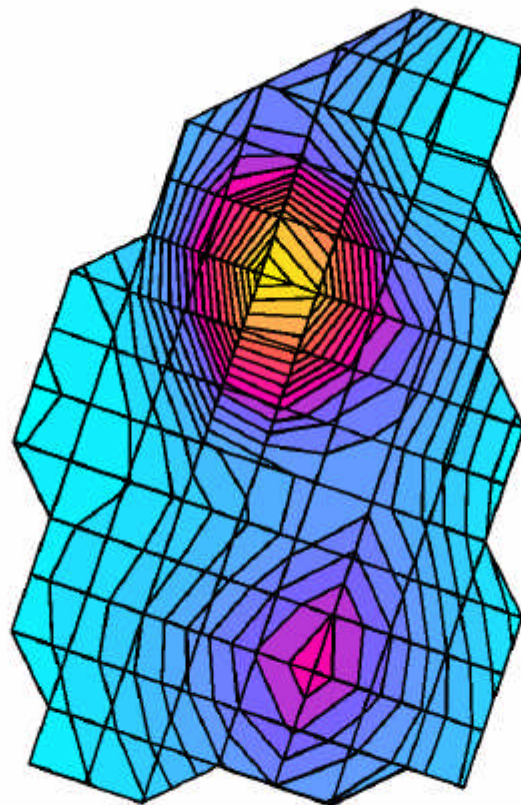
MOTO Left Phantom; Section; Position: ; Frequency: 1851 [MHz]

Probe: ET3DV4 - SN1005 (DAE2); ConvF(5.10,5.10,5.10); Crest factor: 8.0; Brain 1900 MHz:  $\sigma = 1.71$  [mho/m]  $\epsilon_r = 41.0$   $\rho = 1.00$  [g/cm<sup>3</sup>]

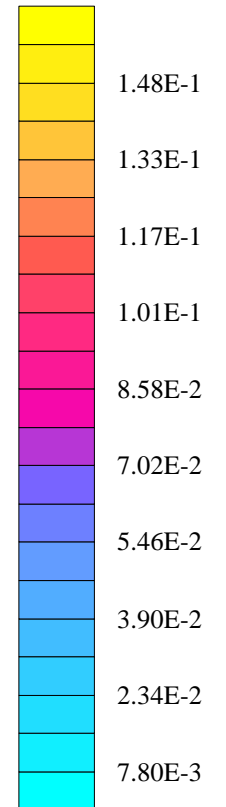
Cube 5x5x7: SAR (1g): 0.137 [mW/g], SAR (10g): 0.0760 [mW/g], (Worst-case extrapolation)

Coarse: Dx = 10.0, Dy = 10.0, Dz = 10.0

Powerdrift: -2.41 dB



SAR<sub>Tot</sub> [mW/g]



Appendix B

The following page is a copy of the Calibration Certificate for Dasy™ probe serial number 1005.

## Calibration Certificate

### Dosimetric E-Field Probe

Type:

**ET3DV4**

Serial Number:

**1005**

Place of Calibration:

**Zurich**

Date of Calibration:

**June 12, 1998**

Calibration Interval:

**12 months**

Schmid & Partner Engineering AG hereby certifies, that this device has been calibrated on the date indicated above. The calibration was performed in accordance with specifications and procedures of Schmid & Partner Engineering AG.

Wherever applicable, the standards used in the calibration process are traceable to international standards. In all other cases the standards of the Laboratory for EMF and Microwave Electronics at the Swiss Federal Institute of Technology (ETH) in Zurich, Switzerland have been applied.

Calibrated by:

*Thomas Schmid*

Approved by:

*N. Kestler*

## Appendix C

The following page is the printout from the Dasy™ measurement system validation tests.

## 1800 MHz Validation Dipole

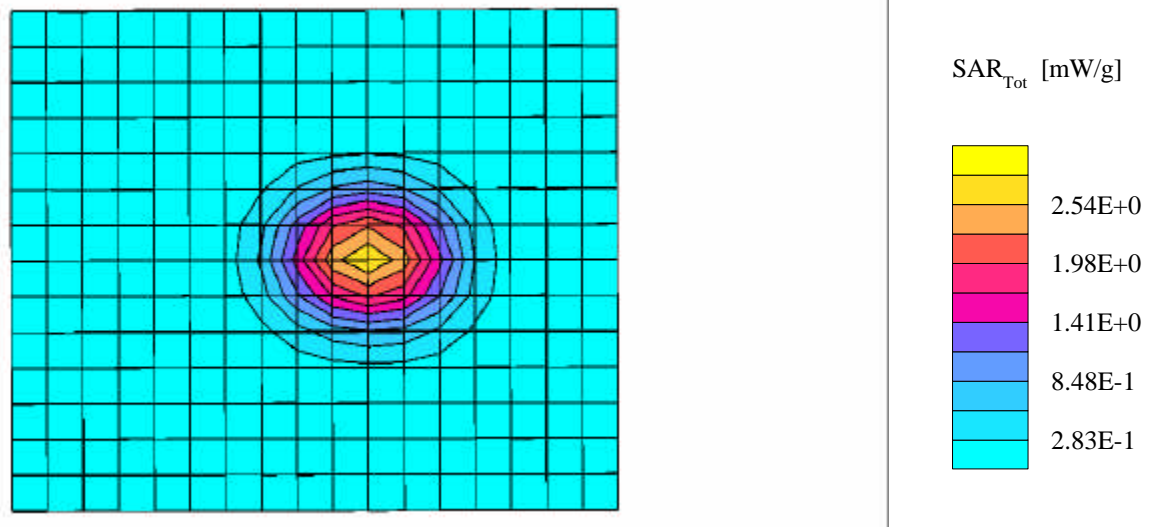
250 mW CW input power

MOT FLAT; MOTO FLAT

Probe: ET3DV4 - SN1005 (DAE2); ConvF(5.10,5.10,5.10); Crest factor: 1.0; Brain 1800 MHz:  $\sigma = 1.71$  [mho/m]  $\epsilon_r = 41.0$   $\rho = 1.00$  [g/cm<sup>3</sup>]

Cube 5x5x7: Peak: 19.5 [mW/g], SAR (1g): 10.1 [mW/g], SAR (10g): 5.09 [mW/g], (Worst-case extrapolation)

Penetration depth: 7.3 (7.1, 8.0) [mm]



## Appendix D

The following page is a copy of the first page of the Dasy™ Users Manual

# Schmid & Partner Engineering AG

Staffelstrasse 8, 8045 Zurich, Switzerland, Telefon +41 1 280 08 60, Fax +41 1 280 08 64

---

## Preliminary Manual

*DASY3 V1.0b*

*for Windows 95*

March 98 Edition  
Schmid & Partner Engineering AG  
Staffelstrasse 8  
8045 Zurich  
Switzerland  
Tel +41 1 280 08 60  
Fax +41 1 280 08 64  
Email: [speag@access.ch](mailto:speag@access.ch)  
WWW: [www.access.ch/speag](http://www.access.ch/speag)