



Class II Permissive Change Exhibit 11: SAR Test Report IHDT6EN1

Date of test: 10/19/2004 to 10/26/2004
Date of Report: 11/03/2004

Laboratory: Motorola Personal Communications Sector Product Safety & Compliance Laboratory
 600 N. US Highway 45
 Room: MW113
 Libertyville, Illinois 60048

Test Responsible: Albert Patapack
 Senior Staff Engineer

Accreditation: This laboratory is accredited to ISO/IEC 17025-1999 to perform the following tests:



<p><u>Tests:</u> Electromagnetic Specific Absorption Rate</p> <p>Simulated Tissue Preparation RF Power Measurement</p>	<p><u>Procedures:</u> ANSI/IEEE C95.1-1992, 1999 (SAR) IEEE C95.3-1991 IEEE P1528 (<i>DRAFT</i>) FCC OET Bulletin 65 (<i>including Supplements A, B, C</i>) Australian Communications Authority Radio Communications (Electromagnetic Radiation – Human Exposure) Standard 1999 CENELEC EN 50361 (2001) APP-0247 DOI-0876, 0900, 0902, 0904, 0915</p>
--	---

On the following products or types of products:
 Wireless Communications Devices (Examples): Two Way Radios; Portable Phones (including Cellular, Licensed Non-Broadcast and PCS); Low Frequency Readers; and Pagers

A2LA certificate #1651-01

Statement of Compliance: Motorola declares under its sole responsibility that portable cellular telephone FCC ID IHDT6EN1 to which this declaration relates, is in conformity with the appropriate General Population/Uncontrolled RF exposure standards, recommendations and guidelines (FCC 47 CFR §2.1093). It also declares that the product was tested in accordance with the appropriate measurement standards, guidelines and recommended practices. Any deviations from these standards, guidelines and recommended practices are noted below:

(none)

©Motorola, Inc. 2004
 This test report shall not be reproduced except in full, without written approval of the laboratory.

The results and statements contained herein relate only to the items tested. The names of individuals involved may be mentioned only in connection with the statements or results from this report.

Motorola encourages all feedback, both positive and negative, on this test report.

Table of Contents

1. INTRODUCTION3

2. DESCRIPTION OF THE DEVICE UNDER TEST.....3

2.1 Antenna description3

2.2 Device description.....3

3. TEST EQUIPMENT USED.....4

3.1 Dosimetric System4

3.2 Additional Equipment.....4

4. ELECTRICAL PARAMETERS OF THE TISSUE SIMULATING LIQUID4

5. SYSTEM ACCURACY VERIFICATION.....5

6. TEST RESULTS.....6

6.1 Head Adjacent Test Results.....6

6.2 Body Worn Test Results8

APPENDIX 1: SAR DISTRIBUTION COMPARISON FOR SYSTEM ACCURACY VERIFICATION10

APPENDIX 2: SAR DISTRIBUTION PLOTS FOR PHANTOM HEAD ADJACENT USE11

APPENDIX 3: SAR DISTRIBUTION PLOTS FOR BODY WORN CONFIGURATION13

APPENDIX 4: PROBE CALIBRATION CERTIFICATE15

APPENDIX 5: DIPOLE CHARACTERIZATION CERTIFICATE16

APPENDIX 6: MEASUREMENT UNCERTAINTY BUDGET.....17

APPENDIX 7: PHOTOGRAPHS OF DEVICE UNDER TEST.....20

1 Introduction

The Motorola Personal Communications Sector Product Safety Laboratory has performed measurements of the maximum potential exposure to the user of portable cellular phone (FCC ID IHDT6EN1). The Specific Absorption Rate (SAR) of this product was measured. The portable cellular phone was tested in accordance with FCC OET Bulletin 65 Supplement C 01-01.

2 Description of the Device Under Test

2.1 Antenna description

Type	Internal	
Location	Upper Portion of Rear of Phone	
Dimensions	Length	25mm
	Width	45mm
Configuration	PIFA	

2.2 Device description

FCC ID Number	IHDT6EN1						
Serial number	FB10322253						
Mode(s) of Operation	GSM 900	GSM 1800	GSM 1900	GPRS 900	GPRS 1800	GPRS 1900	UMTS
Modulation Mode(s)	GSM	GSM	GSM	GSM	GSM	GSM	WCDMA
Maximum Output Power Setting	33.00 dBm	30.00 dBm	30.00 dBm	33.00 dBm	30.00 dBm	30.00 dBm	22.00 dBm
Duty Cycle	1:8	1:8	1:8	2:8	2:8	2:8	1:1
Transmitting Frequency Rang(s)	880.2-914.8MHz	1710.2-1784.8MHz	1850.20 – 1909.80MHz	880.2-914.8MHz	1710.2-1784.8MHz	1850.20 – 1909.80MHz	1920.3-1979.7MHz
Production Unit or Identical Prototype (47 CFR §2.908)	Identical Prototype						
Device Category	Portable						
RF Exposure Limits	General Population / Uncontrolled						

3 Test Equipment Used

3.1 Dosimetric System

The Motorola Personal Communications Sector Product Safety & Compliance Laboratory utilizes a Dosimetric Assessment System (Dasy3™ v3.1d) manufactured by Schmid & Partner Engineering AG (SPEAG™), of Zurich Switzerland. All the SAR measurements are taken within a shielded enclosure. The overall RSS uncertainty of the measurement system is ±11.7% (K=1) with an expanded uncertainty of ±23.0% (K=2). The measurement uncertainty budget is given in Appendix 6. Per IEEE 1528, this uncertainty budget is applicable to the SAR range of 0.4 W/kg to 10 W/kg. The list of calibrated equipment used for the measurements is shown below.

Description	Serial Number	Cal Due Date
DASY3 DAE V1	398	02/16/2005
E-Field Probe ET3DV6	1514	07/22/2005
Dipole Validation Kit, D1800V2	272tr	04/02/2005
Dipole Validation Kit, D1900V2	519tr	04/02/2005
S.A.M. Phantom used for 1900MHz	TP-1250	

3.2 Additional Equipment

Description	Serial Number	Cal Due Date
Signal Generator HP8648C	3847A04822	02/06/2005
Power Meter E4419B	GB39511086	04/05/2005
Power Sensor #1 - E9301A	US39210929	07/21/2005
Power Sensor #2 - E9301A	US39210930	07/21/2005
Network Analyzer HP8753ES	US39172529	10/29/2004
Dielectric Probe Kit HP85070B	US99360070	N/A

4 Electrical parameters of the tissue simulating liquid

Prior to conducting SAR measurements, the relative permittivity, ϵ_r , and the conductivity, σ , of the tissue simulating liquids were measured with the HP85070 Dielectric Probe Kit. These values, along with the temperature of the tissue simulate are shown in the table below. The recommended limits for maximum permittivity and minimum conductivity are also shown. These come from the Federal Communication Commission, OET Bulletin 65 Supplement C 01-01. It is seen that the measured parameters are satisfactory for compliance testing.

f (MHz)	Tissue type	Limits / Measured	Dielectric Parameters		
			ϵ_r	σ (S/m)	Temp (°C)
1880	Head	Measured, 10/19/2004	39.5	1.46	19.4
		Recommended Limits	40.0 ±5%	1.40 ±5%	18-25
	Body	Measured, 10/22/2004	50.9	1.59	18.7
		Measured, 10/26/2004	51.1	1.47	19.8
		Recommended Limits	53.3 ±5%	1.52 ±5%	18-25

The list of ingredients and the percent composition used for the tissue simulates are indicated in the table below.

Ingredient	1900MHz	1900MHz
	Head	Body
Sugar	--	30.80
DGBE	47.0	--
Water	52.8	68.91
Salt	0.2	0.29
HEC	--	--
Bact.	--	--

5 System Accuracy Verification

A system accuracy verification of the DASY3 was performed using the measurement equipment listed in Section 3.1. The daily system accuracy verification occurs within center section of the SAM phantom.

A SAR measurement was performed to see if the measured SAR was within +/- 10% from the target SAR indicated on the dipole certification sheet. These tests were done at 900MHz and/or 1800MHz. These frequencies are within 100MHz of the mid-band frequency of the test device. This is within the allowable window given in Supplement C 01-01 *Appendix D System Verification* section item #5. The test was conducted on the same days as the measurement of the DUT. Recommended limits for maximum permittivity, minimum conductivity are shown in the table below. These come from the Federal Communication Commission, OET Bulletin 65 Supplement C 01-01. The obtained results from the system accuracy verification are displayed in the table below. The distributions of SAR compare well with those of the reference measurements (see Appendix 1). The tissue stimulant depth was verified to be 15.0cm ±0.5cm. Z-axis scans showing the SAR penetration are also included in Appendix 1. SAR values are normalized to 1W forward power delivered to the dipole.

f (MHz)	Description	SAR (W/kg), 1gram	Dielectric Parameters		Ambient Temp (°C)	Tissue Temp (°C)
			ϵ_r	σ (S/m)		
1800	Measured, 10/22/2004	40.3	39.4	1.37	20.0	20.0
	Recommended Limits	40.7	40.0 ±5%	1.4 ±5%	18-25	18-25
1900	Measured, 10/19/2004	42.15	39.9	1.47	20.0	18.9
	Measured, 10/26/2004	43.7	38.1	1.47	20.0	18.9
	Recommended Limits	42.0	40.0 ±5%	1.4 ±5%	18-25	18-25

The following probe conversion factors were used on the E-Field probe(s) used for the system accuracy verification measurements:

Description	Serial Number	f (MHz)	Conversion Factor	Cal Cert pg #
E-Field Probe ET3DV6	SN1514	1800	5.03	7 of 8

6 Test Results

The test sample was operated in a test mode that allows control of the transmitter without the need to place actual phone calls. For the purposes of this test the unit is commanded to test mode and manually set to the proper channel, transmitter power level and transmit mode of operation. The phone was tested in the configurations stipulated in OET Bulletin 65 Supplement C 01-01. Motorola also followed the requirements in Supplement. C / Appendix D: SAR Measurement Procedures, section titled “*Devices Operating Next To A Person’s Ear* “. These directions state “The device should be tested on the left and right side of the head phantom in the “Cheek/Touch” and “Ear/Tilt” positions. When applicable, each configuration should be tested with the antenna in its fully extended and fully retracted positions. These test configurations should be tested at the high, middle and low frequency channels of each operating mode; for example, AMPS, CDMA, and TDMA. If the SAR measured at the middle channel for each test configuration (left, right, Cheek/Touch, Tile/Ear, extended and retracted) is at least 2.0 dB lower than the SAR limit, testing at the high and low channels is optional for such test configuration(s).“

The DASY v3.1d SAR measurement system specified in section 3.1 was utilized within the intended operations as set by the SPEAG™ setup. The phone was positioned into the measurement configurations using the positioner supplied with the DASY 3.1d SAR measurement system. The measured dielectric constant of the material used for the positioner is less than 2.9 and the loss tangent is less than 0.02 (± 30%) at 850MHz. The default settings for the “coarse” and “cube” scans were chosen and use for measurements. The grid spacing of the course scan was set to 15cm as shown in the SAR plots included in appendix 2 and 3. Please refer to the DASY manual for additional information on SAR scanning procedures and algorithms used.

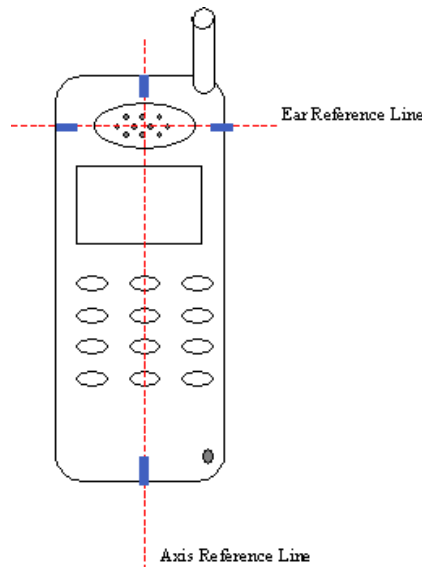
The Cellular Phone (FCC ID IHDT6EN1) has 810mAh SNN5743A as the only available battery option. This battery was used to do all of the SAR testing. The phone was placed in the SAR measurement system with a fully charged battery.

6.1 Head Adjacent Test Results

To aid in positioning repeatability, the ear reference line of the device and the axis reference line of the device have been physically added using a non-metallic marker.

- Per Figure 1, the "Ear Reference Line" is centered vertically through the center of the listening area (as defined by the speaker holes in the housing).
- The "Axis Reference Line" bisects the front surface of the device at its top and bottom edges.
- The intersection of these two lines defines the location of the "Ear Reference Point".

The lines drawn on the device extended to the outside edges, as shown in blue in the figure below, & wrap around the sides of the device.



The SAR results shown in tables 1 and 2 are maximum SAR values averaged over 1 gram of phantom tissue. Also shown are the measured conducted output powers, the temperature of the test facility during the test, the temperature of the tissue simulate after the test, the measured drift and the extrapolated SAR. The exact method of extrapolation is $New\ SAR = Old\ SAR * 10^{(-drift/10)}$. The SAR reported at the end of the measurement process by the DASY™ measurement system can be scaled up by the measured drift to determine the SAR at the beginning of the measurement process. This is the most conservative SAR because it corresponds to the average output power at the beginning of the SAR test. This extrapolation has been done because when the DUT is operating properly it may exhibit a slump in radiated power and SAR over time. This is verified by measuring the SAR drift after the test. The test conditions indicated as bold numbers in the following table are included in Appendix 2

The SAR measurements were performed using the SAM phantoms listed in section 3.1. Since same phantoms and tissue simulate are used for the system accuracy verification as the device SAR measurements, the Z-axis scans included in within Appendix 1 are applicable for verification of tissue simulate depth to be 15.0cm ±0.5cm. All other test conditions measured lower SAR values than those included in Appendix 2. Note that 800MHz digital mode SAR measurements were performed in accordance with Supplement C.

The following probe conversion factors were used on the E-Field probe(s) used for the head adjacent measurements:

Description	Serial Number	f (MHz)	Conversion Factor	Cal Cert pg #
E-Field Probe ET3DV6	SN1514	1800	5.03	7 of 8

f (MHz)	Description	Conducted Output Power (dBm)	Cheek / Touch Position								
			Left Head				Right Head				
			Measured (W/kg)	Drift (dB)	Extrapolated (W/kg)	Simulate Temp (°C)	Measured (W/kg)	Drift (dB)	Extrapolated (W/kg)	Simulate Temp (°C)	
Digital 1900MHz	Channel 512	29.91									
	Channel 661	29.99	0.514	-0.09	0.52	18.9	0.467	-0.19	0.49	19.0	
	Channel 810	30.00									

Table 1: SAR measurement results for the portable cellular telephone FCC ID IHDT6EN1 at highest possible output power. Measured against the left head in the Cheek/Touch Position.

f (MHz)	Description	Conducted Output Power (dBm)	15° Tilt Position								
			Left Head				Right Head				
			Measured (W/kg)	Drift (dB)	Extrapolated (W/kg)	Simulate Temp (°C)	Measured (W/kg)	Drift (dB)	Extrapolated (W/kg)	Simulate Temp (°C)	
Digital 1900MHz	Channel 512	29.91									
	Channel 661	29.99	0.39	-0.24	0.41	18.9	0.437	0.02	0.44	19.0	
	Channel 810	30.00									

Table 2: SAR measurement results for the portable cellular telephone FCC ID IHDT6EN1 at highest possible output power. Measured against the right head in the 15° Tilt Position.

6.2 Body Worn Test Results

The SAR results shown in table 3 and 4 are the maximum SAR values averaged over 1 gram of phantom tissue. Also shown are the measured conducted output powers, the temperature of the test facility during the test, the temperature of the tissue simulate after the test, the measured drift and the extrapolated SAR. The exact method of extrapolation is $New\ SAR = Old\ SAR * 10^{(-drift/10)}$. The SAR reported at the end of the measurement process by the DASY™ measurement system can be scaled up by the measured drift to determine the SAR at the beginning of the measurement process. This is the most conservative SAR because it corresponds to the average output power at the beginning of the SAR test. This extrapolation has been done because when the DUT is operating properly it may exhibit a slump in radiated power and SAR over time. This is verified by measuring the SAR drift after the test. The test conditions indicated as bold numbers in the following table are included in Appendix 3. Note that 800MHz digital mode SAR measurements were performed in accordance with OET Bulletin 65 Supplement C 01-01. All other test conditions measured lower SAR values than those included in Appendix 3.

A “flat” phantom was for the body-worn tests. This “flat” phantom is made out of 1” thick natural High Density Polyethylene with a thickness at the bottom equal to 2.0mm. It measures 52.7cm(long) x 26.7cm(wide) x 21.2cm(tall). The measured dielectric constant of the material used is less than 2.3 and the loss tangent is less than 0.0046 all the way up to 2.184GHz.

The tissue stimulant depth was verified to be 15.0cm ±0.5cm. The same device holder described in section 6 was used for positioning the phone. The functional accessories were divided into two categories, the ones with metal components and the ones with non-metal components. For non-metallic component accessories’, testing was performed on the accessory that displayed the closest proximity to the flat phantom. Each metallic component accessory, if any, was checked for uniqueness of metal component so that each is tested with the device. If multiple accessories shared an identical metal component, only the accessory that dictates the closest spacing to the body was tested. The cellular phone was tested with a headset connected to the device for all body-worn SAR measurements.

There are no Body-Worn Accessories currently available for this phone. The phone was tested in a body worn configuration, per Supplement C, by using a separation distance of no more than 25mm between the phone and the phantom.

The following probe conversion factors were used on the E-Field probe(s) used for the body worn measurements:

Description	Serial Number	f (MHz)	Conversion Factor	Cal Cert pg #
E-Field Probe ET3DV6	SN1514	1800	4.46	7 of 8

f (MHz)	Description	Conducted Output Power (dBm)	Body Worn Position							
			Front of Phone 15mm Away from Phantom				Back of Phone 15mm Away from Phantom			
			Measured (W/kg)	Drift (dB)	Extrapolated (W/kg)	Simulate Temp (°C)	Measured (W/kg)	Drift (dB)	Extrapolated (W/kg)	Simulate Temp (°C)
Digital 1900MHz	Channel 512	29.91					1.13	-0.02	1.14	18.8
	Channel 661	29.99	0.214	-0.04	0.22	18.7	0.955	-0.08	0.97	18.8
	Channel 810	30.00					0.94	-0.05	0.95	18.7

Table 3: SAR measurement results for the portable cellular telephone FCC ID IHDT6EN1 at highest possible output power. Measured against the body.

f (MHz)	Description	Conducted Output Power (dBm)	Body Worn Position			
			Back of Phone 25mm Away with GPRS Class 10			
			Measured (W/kg)	Drift (dB)	Extrapolated (W/kg)	Simulate Temp (°C)
Digital 1900MHz	Channel 512	29.91				
	Channel 661	29.99	0.552	-0.16	0.57	19.8
	Channel 810	30.00				

Table 4: SAR measurement results for the portable cellular telephone FCC ID IHDT6EN1 at highest possible output power. Measured against the body.

Appendix 1

SAR distribution comparison for the system accuracy verification

Dipole 1900 MHz

1900 MHz System Performance Check / Dipole Sn# 519tr

PM1 Power = 200mW

Sim.Temp@meas=19.4°C Sim.Temp@SPC = 18.9°C Room Temp @ SPC = 20.0°C

R4 Amy Twin Phantom Rev.4 (22Aug02) Phantom; section 2 Section; Position: (90°,90°); Frequency: 1900 MHz

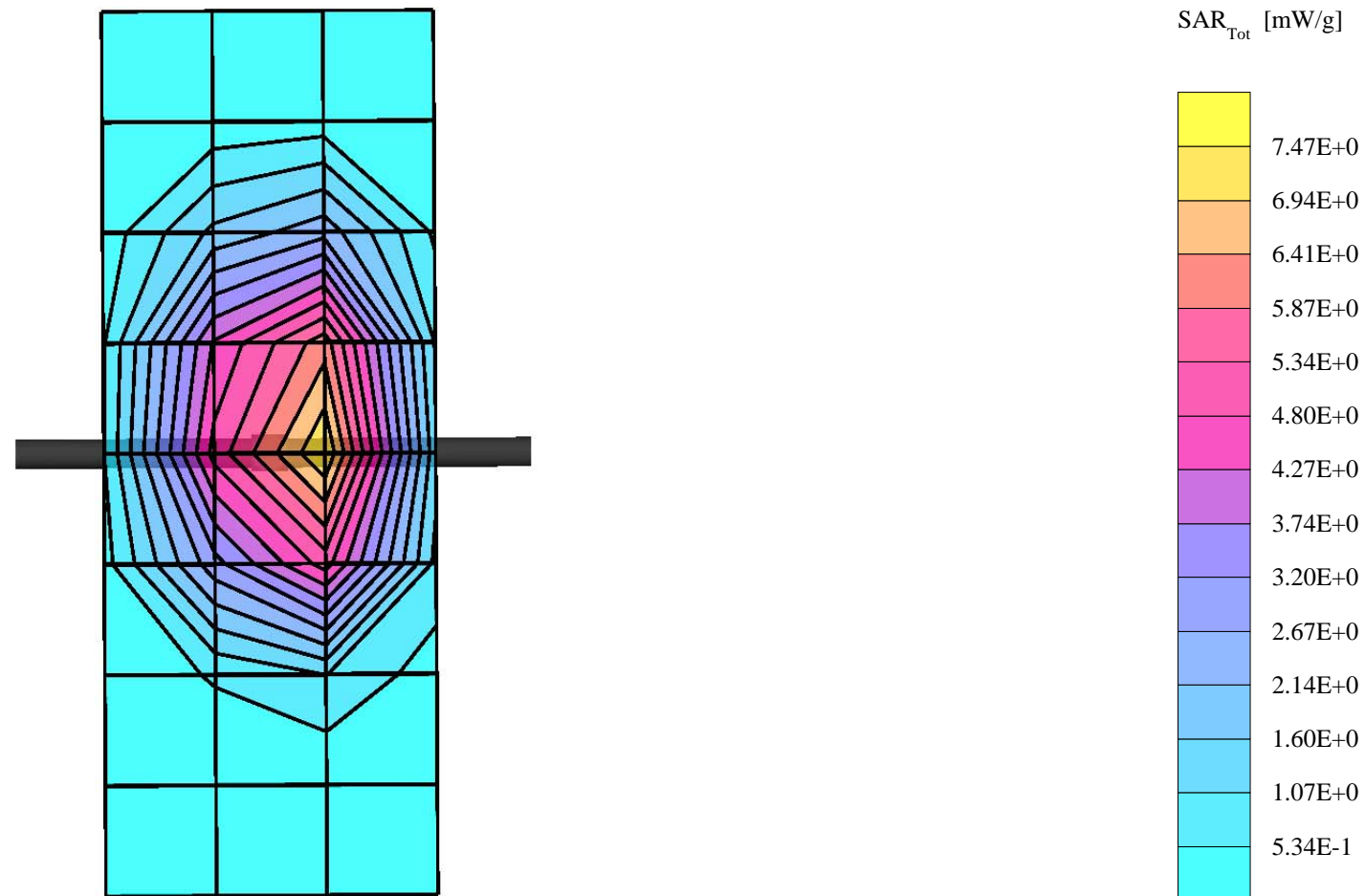
Probe: ET3DV6 - SN1514-VALADATION4; ConvF(5.03,5.03,5.03); Crest factor: 1.0; 1900 MHz VALIDATION: $\sigma = 1.47$ mho/m $\epsilon_r = 39.9$ $\rho = 1.00$ g/cm³

Cubes (2): SAR (1g): 8.43 mW/g ± 0.03 dB, SAR (10g): 4.35 mW/g ± 0.01 dB, (Worst-case extrapolation)

Coarse: Dx = 15.0, Dy = 15.0, Dz = 10.0

Penetration depth: 7.9 (7.6, 8.7) [mm]

Powerdrift: 0.01 dB



Dipole 1900 MHz

1900 MHz System Performance Check / Dipole Sn# 519tr

PM1 Power = 200mW

Sim.Temp@meas=19.4°C Sim.Temp@SPC = 18.9°C Room Temp @ SPC = 20.0°C

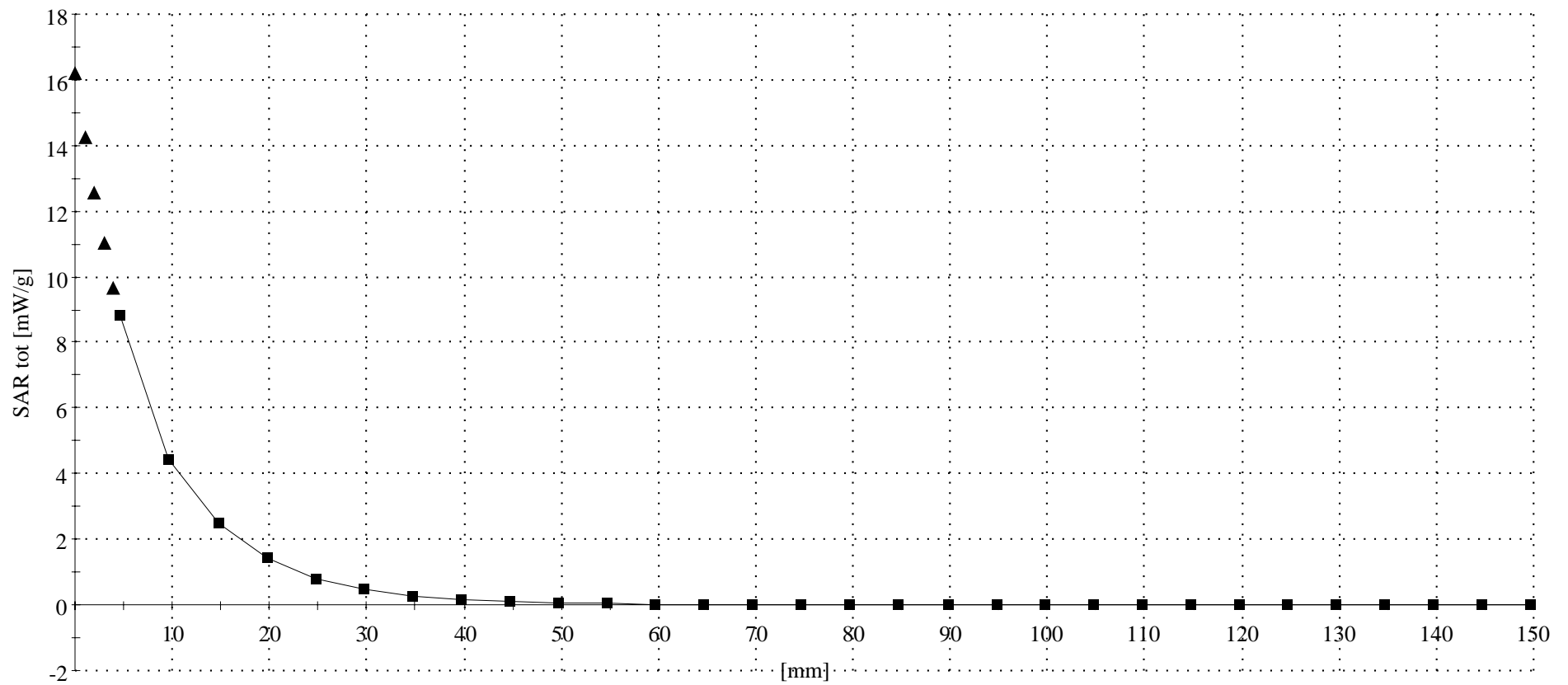
R4 Amy Twin Phantom Rev.4 (22Aug02) Phantom; Section; Position: ; Frequency: 1900 MHz

Probe: ET3DV6 - SN1514-VALADATION4; ConvF(5.03,5.03,5.03); Crest factor: 1.0; 1900 MHz VALIDATION: $\sigma = 1.47$ mho/m $\epsilon_r = 39.9$ $\rho = 1.00$ g/cm³

: , ()

Z-Axis: Dx = 0.0, Dy = 0.0, Dz = 5.0

Penetration depth: 7.7 (7.4, 8.5) [mm]



Dipole 1800 MHz

1800 MHz System Performance Check / Dipole Sn# 272TR

PM1 Power = 200mW

Sim.Temp@meas=19.3°C Sim.Temp@SPC = 20°C Room Temp @ SPC = 20°C

R4 Amy Twin Phantom Rev.4 (22Aug02) Phantom; section 2 Section; Position: (90°,90°); Frequency: 1800 MHz

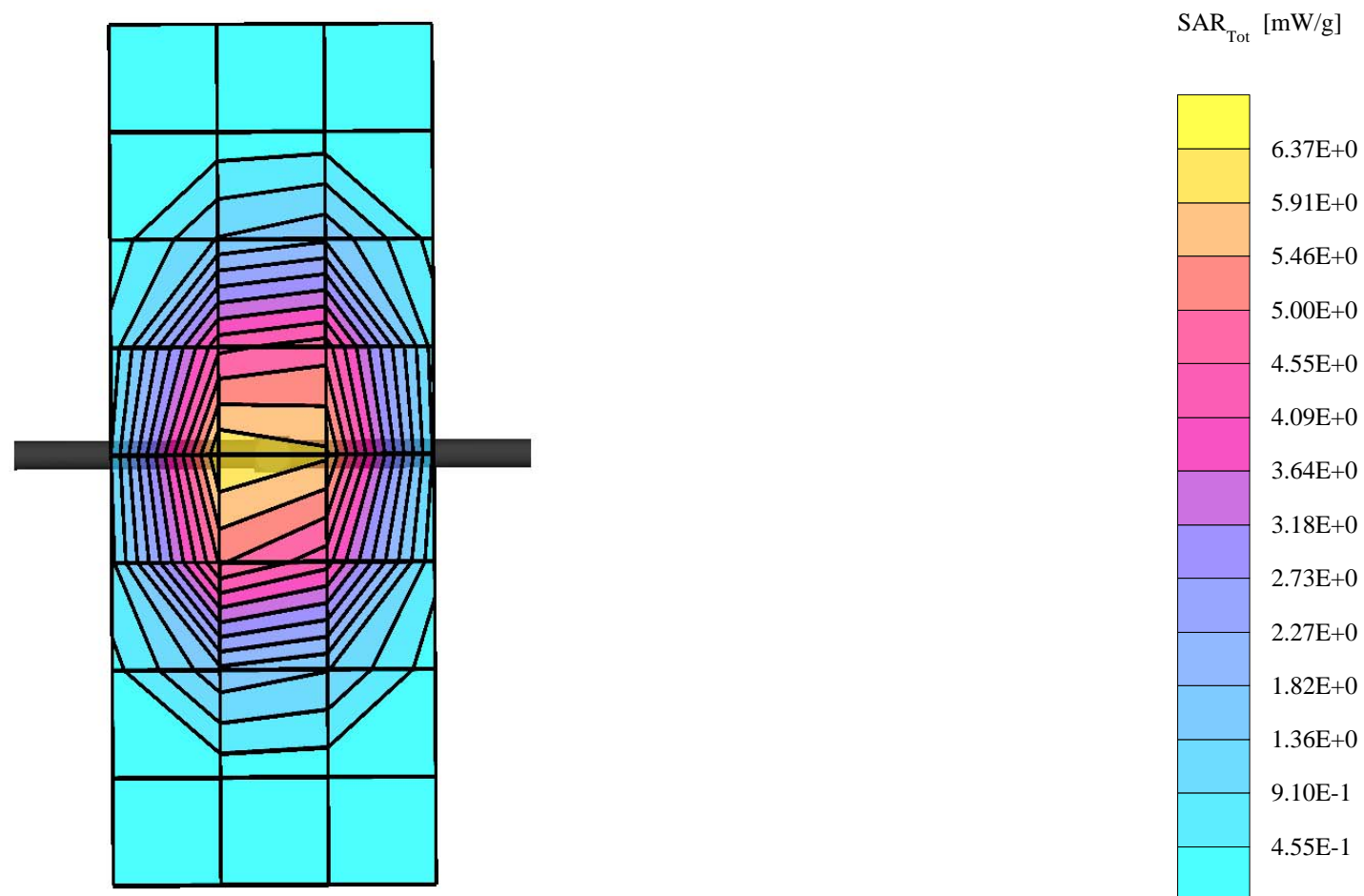
Probe: ET3DV6 - SN1514-VALADATION4; ConvF(5.03,5.03,5.03); Crest factor: 1.0; 1800 MHz VALIDATION: $\sigma = 1.37$ mho/m $\epsilon_r = 39.4$ $\rho = 1.00$ g/cm³

Cubes (2): SAR (1g): 8.06 mW/g ± 0.03 dB, SAR (10g): 4.23 mW/g ± 0.04 dB, (Worst-case extrapolation)

Coarse: Dx = 15.0, Dy = 15.0, Dz = 10.0

Penetration depth: 8.1 (7.7, 8.9) [mm]

Powerdrift: 0.04 dB



Dipole 1800 MHz

1800 MHz System Performance Check / Dipole Sn# 272TR

PM1 Power = 200mW

Sim.Temp@meas=19.3°C Sim.Temp@SPC = 20°C Room Temp @ SPC = 20°C

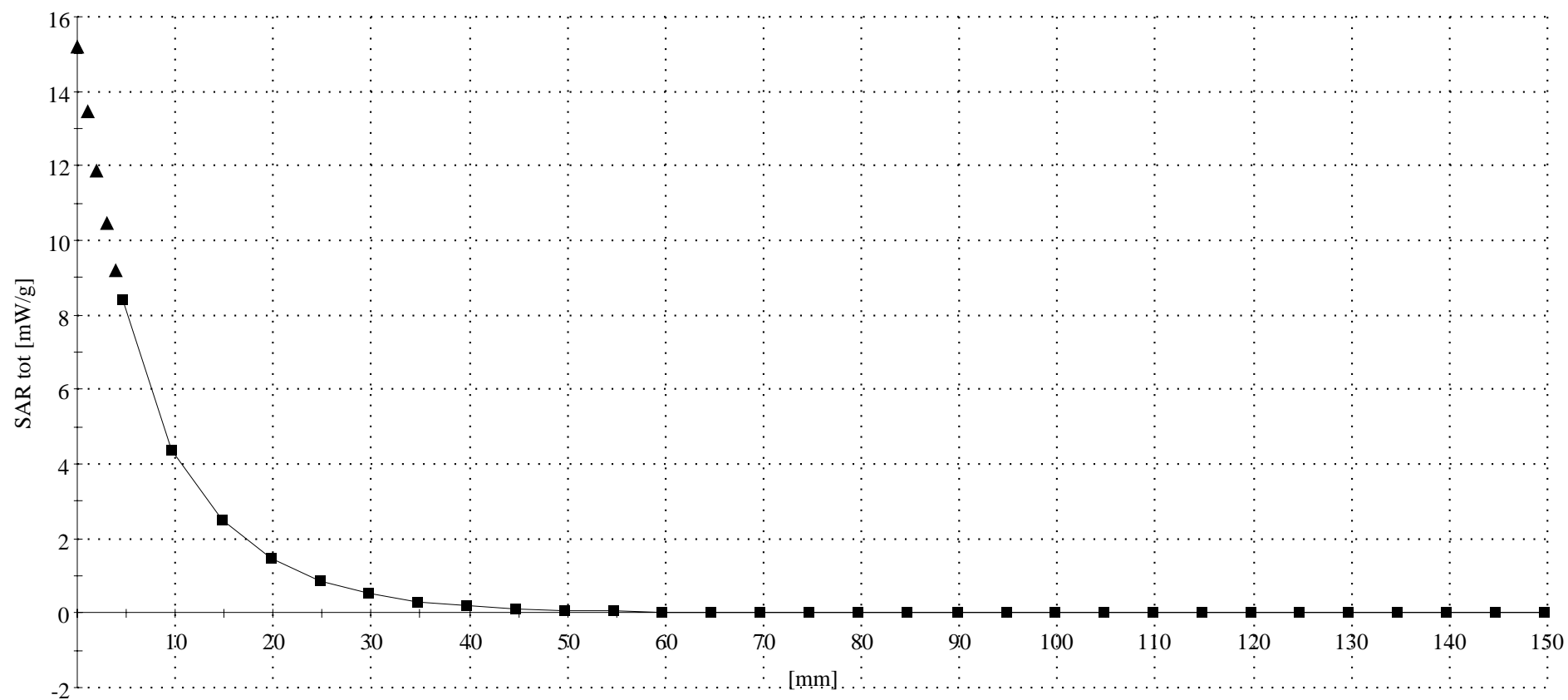
R4 Amy Twin Phantom Rev.4 (22Aug02) Phantom; Section; Position: ; Frequency: 1800 MHz

Probe: ET3DV6 - SN1514-VALADATION4; ConvF(5.03,5.03,5.03); Crest factor: 1.0; 1800 MHz VALIDATION: $\sigma = 1.37$ mho/m $\epsilon_r = 39.4$ $\rho = 1.00$ g/cm³

: , ()

Z-Axis: Dx = 0.0, Dy = 0.0, Dz = 5.0

Penetration depth: 8.1 (7.7, 8.9) [mm]



Dipole 1900 MHz

1900 MHz System Performance Check / Dipole Sn# 519tr

PM1 Power = 200mW

Sim.Temp@meas=18.6°C Sim.Temp@SPC = 18.9°C Room Temp @ SPC = 20.0°C

R4 TP-1250 GLYCOL SAM Expanded (Rev. 2)-9Jan03 Phantom; Flat Section; Position: (90°,90°); Frequency: 1900 MHz

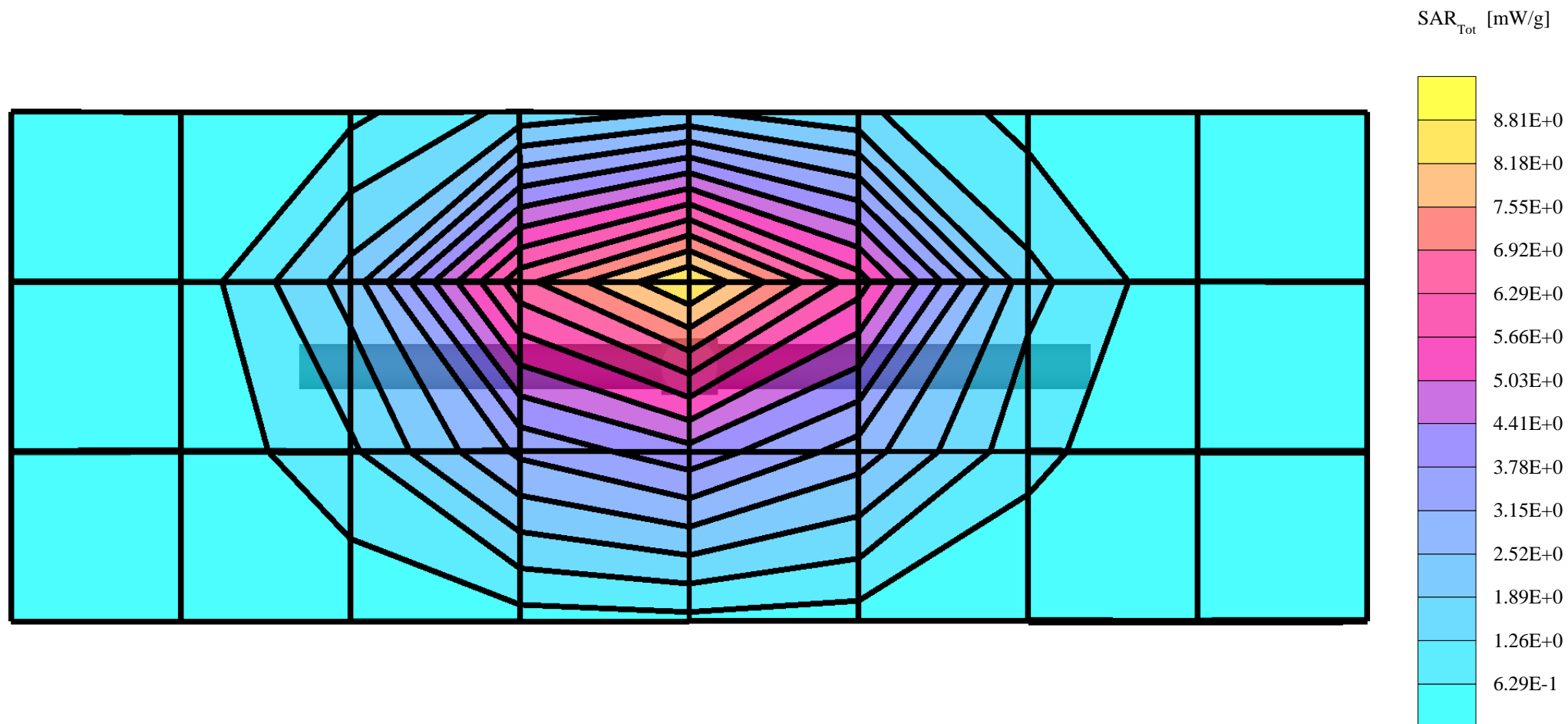
Probe: ET3DV6 - SN1514-VALADATION4; ConvF(5.03,5.03,5.03); Crest factor: 1.0; 1900 MHz VALIDATION: $\sigma = 1.47$ mho/m $\epsilon_r = 38.1$ $\rho = 1.00$ g/cm³

Cubes (2): SAR (1g): 8.74 mW/g \pm 0.01 dB, SAR (10g): 4.53 mW/g \pm 0.02 dB, (Worst-case extrapolation)

Coarse: Dx = 15.0, Dy = 15.0, Dz = 10.0

Penetration depth: 8.1 (7.8, 8.8) [mm]

Powerdrift: 0.00 dB



Dipole 1900 MHz

1900 MHz System Performance Check / Dipole Sn# 519tr

PM1 Power = 200mW

Sim.Temp@meas=18.6°C Sim.Temp@SPC = 18.9°C Room Temp @ SPC = 20.0°C

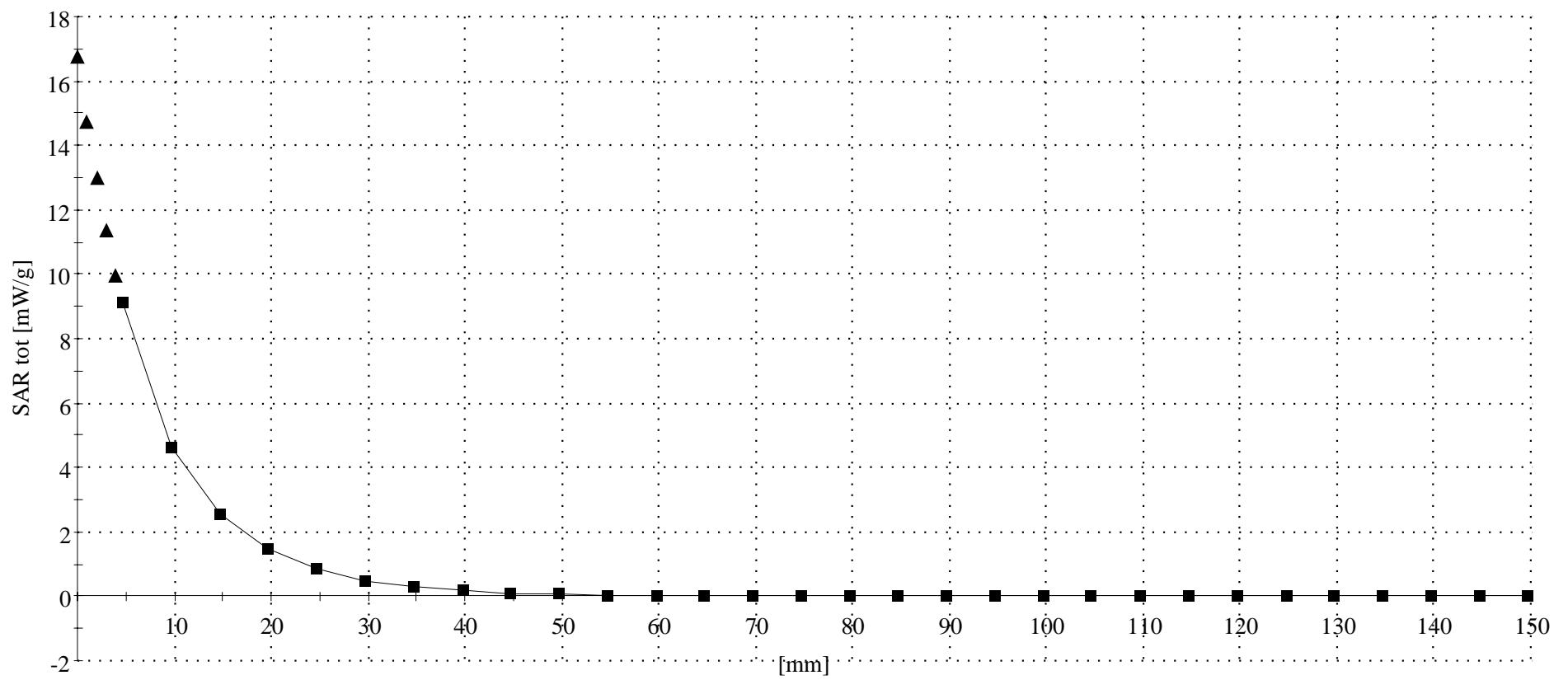
R4 TP-1250 GLYCOL SAM Expanded (Rev. 2)-9Jan03 Phantom; Section; Position: ; Frequency: 1900 MHz

Probe: ET3DV6 - SN1514-VALADATION4; ConvF(5.03,5.03,5.03); Crest factor: 1.0; 1900 MHz VALIDATION: $\sigma = 1.47$ mho/m $\epsilon_r = 38.1$ $\rho = 1.00$ g/cm³

: , ()

Z-Axis: Dx = 0.0, Dy = 0.0, Dz = 5.0

Penetration depth: 7.7 (7.4, 8.5) [mm]



Appendix 2

SAR distribution plots for Phantom Head Adjacent Use

sn: FB10322253

Ch# 661 / Pwr Step: 0

Type of Modulation: GSM 1900

DEVICE POSITION (cheek or rotated): Cheek

Accessory Model #: N/A

Simulate Temp when Measured: 19.0C

Antenna Position: Internal

Battery Model #: SNN5743A

Simulate Temp after Test: 18.9C

R4 TP-1250 GLYCOL SAM Expanded (Rev. 2)-9Jan03 Phantom; Left Hand Section; Position: (90°,180°); Frequency: 1880 MHz

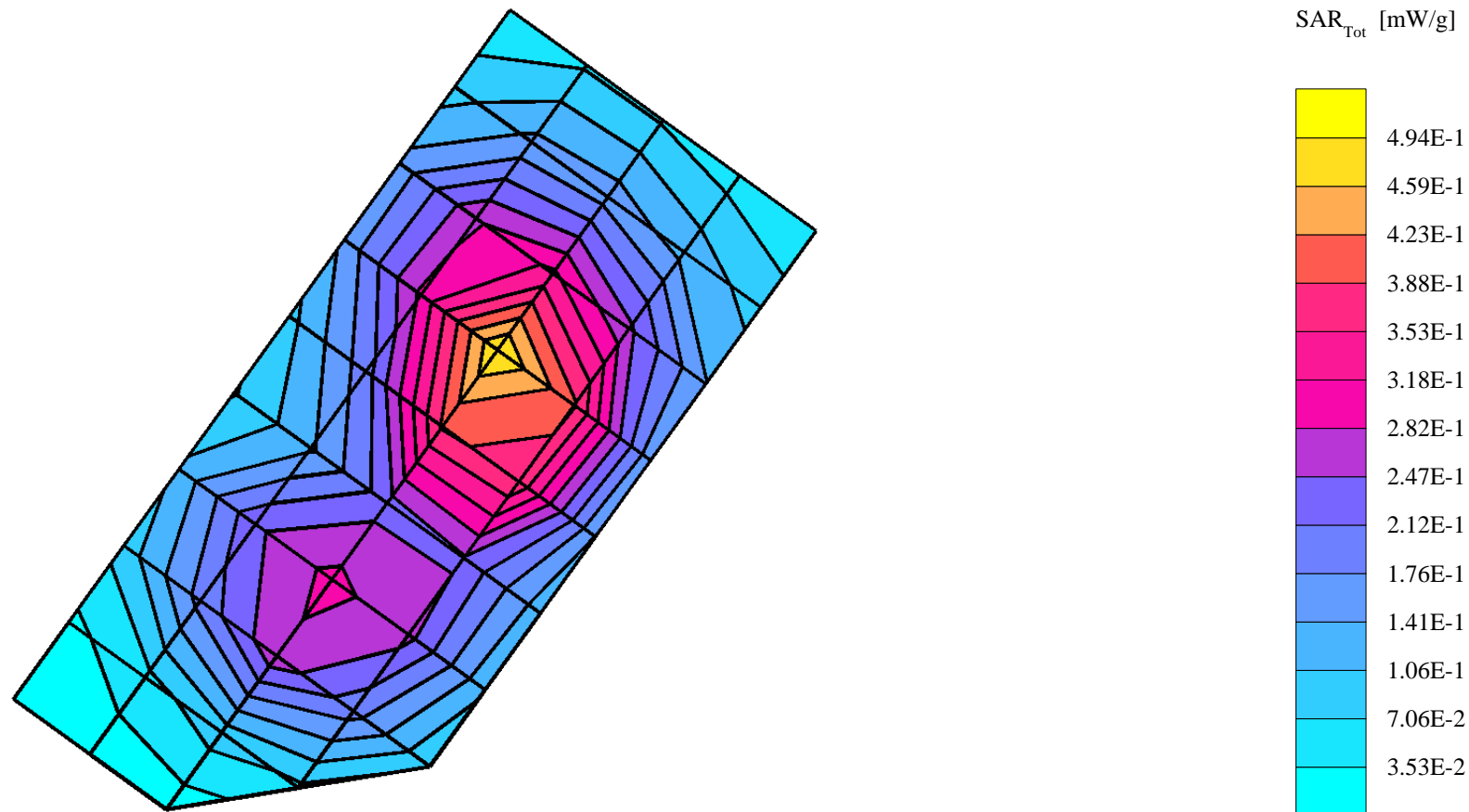
Probe: ET3DV6 - SN1514-IEEE Head2; ConvF(5.03,5.03,5.03); Crest factor: 8.0; 1880 MHz Head & Body: $\sigma = 1.46$ mho/m $\epsilon_r = 39.5$ $\rho = 1.00$ g/cm³

Cube 7x7x7: SAR (1g): 0.514 mW/g, SAR (10g): 0.297 mW/g, (Worst-case extrapolation)

Coarse: Dx = 15.0, Dy = 15.0, Dz = 15.0

Penetration depth: 10.7 (10.3, 11.2) [mm]

Powerdrift: -0.09 dB



sn: FB10322253

Ch# 661 / Pwr Step: 0

Type of Modulation: GSM 1900

DEVICE POSITION (cheek or rotated): Cheek

Accessory Model #: N/A

Simulate Temp when Measured: 19.0C

Antenna Position: Internal

Battery Model #: SNN5743A

Simulate Temp after Test: 19.0C

R4 TP-1250 GLYCOL SAM Expanded (Rev. 2)-9Jan03 Phantom; Right Hand Section; Position: (90°,180°); Frequency: 1880 MHz

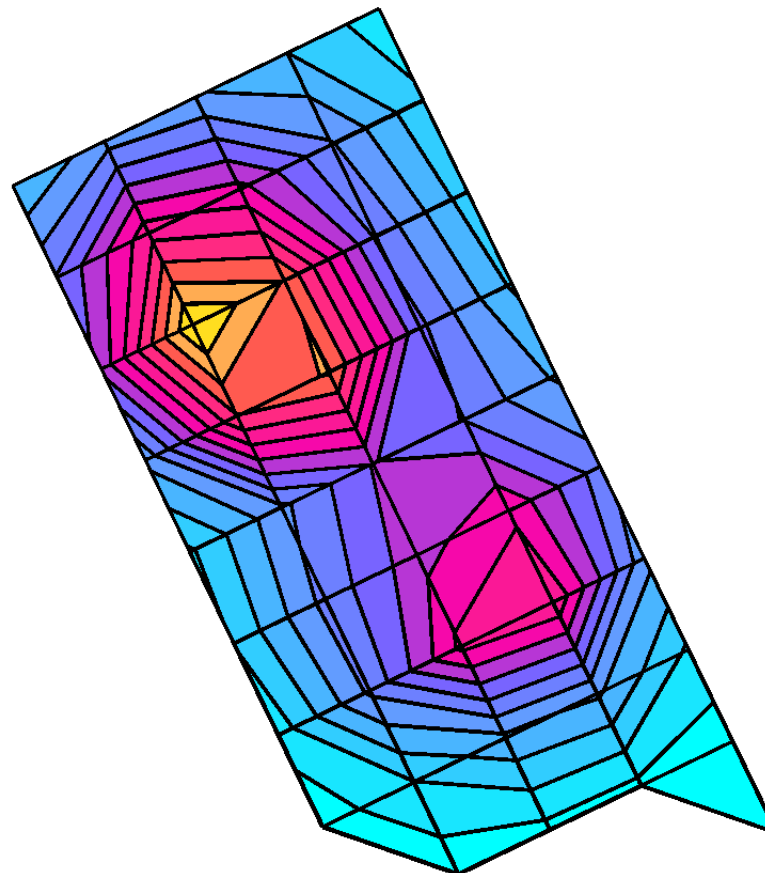
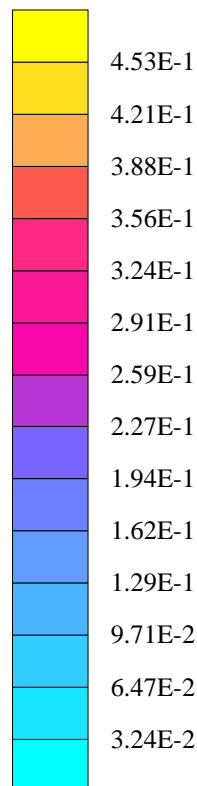
Probe: ET3DV6 - SN1514-IEEE Head2; ConvF(5.03,5.03,5.03); Crest factor: 8.0; 1880 MHz Head & Body: $\sigma = 1.46$ mho/m $\epsilon_r = 39.5$ $\rho = 1.00$ g/cm³

Cube 7x7x7: SAR (1g): 0.467 mW/g, SAR (10g): 0.283 mW/g, (Worst-case extrapolation)

Coarse: Dx = 15.0, Dy = 15.0, Dz = 15.0

Penetration depth: 10.8 (10.1, 11.7) [mm]

Powerdrift: -0.19 dB

SAR_{Tot} [mW/g]

sn: FB10322253

Ch# 661 / Pwr Step: 0

Type of Modulation: GSM 1900

DEVICE POSITION (cheek or rotated): Rotated

Accessory Model #: N/A

Simulate Temp when Measured: 19.0C

Antenna Position: Internal

Battery Model #: SNN5743A

Simulate Temp after Test: 18.9C

R4 TP-1250 GLYCOL SAM Expanded (Rev. 2)-9Jan03 Phantom; Left Hand Section; Position: (90°,180°); Frequency: 1880 MHz

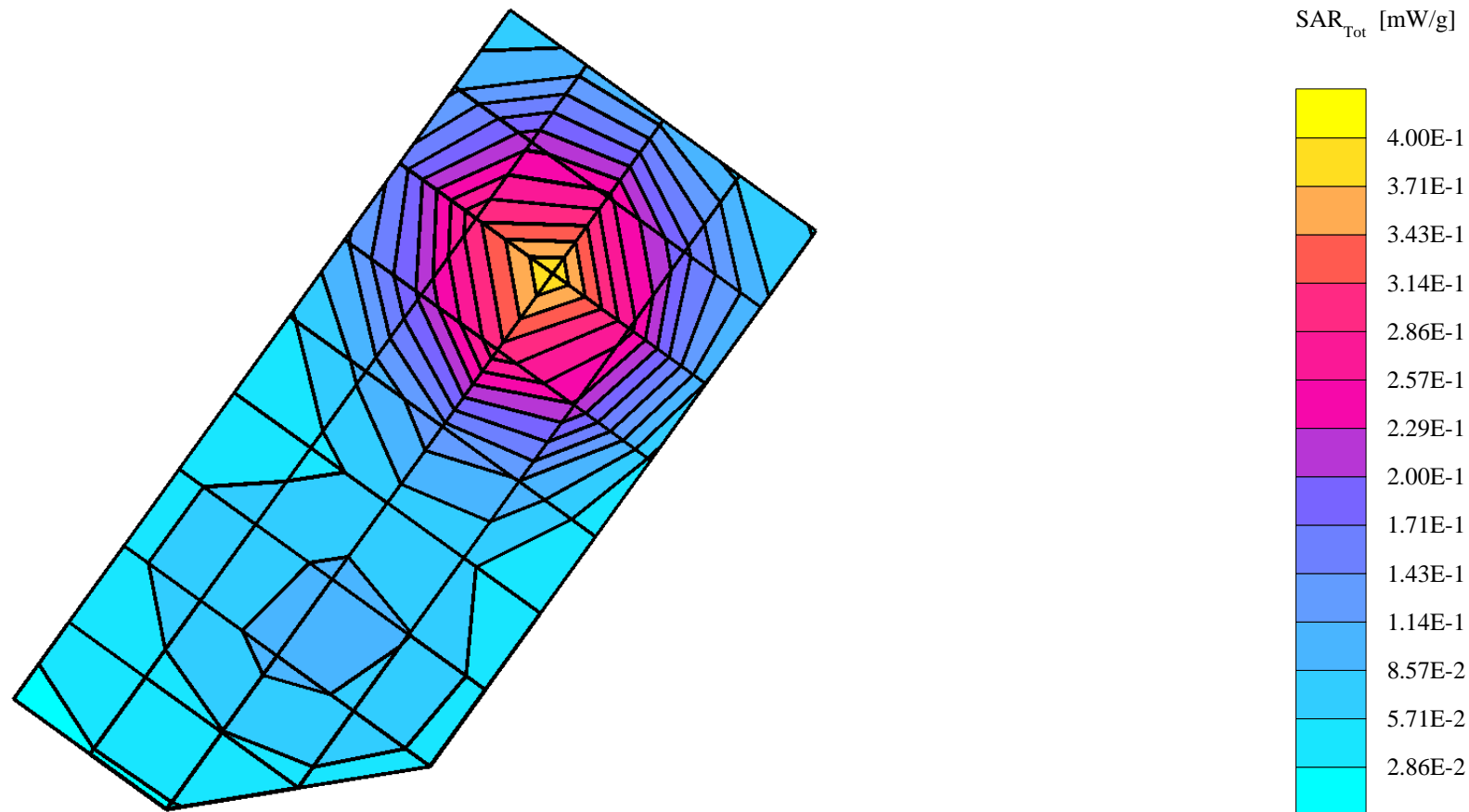
Probe: ET3DV6 - SN1514-IEEE Head2; ConvF(5.03,5.03,5.03); Crest factor: 8.0; 1880 MHz Head & Body: $\sigma = 1.46$ mho/m $\epsilon_r = 39.5$ $\rho = 1.00$ g/cm³

Cube 7x7x7: SAR (1g): 0.390 mW/g, SAR (10g): 0.230 mW/g, (Worst-case extrapolation)

Coarse: Dx = 15.0, Dy = 15.0, Dz = 15.0

Penetration depth: 9.9 (9.4, 10.7) [mm]

Powerdrift: -0.24 dB



sn: FB10322253

Ch# 661 / Pwr Step: 0

Type of Modulation: GSM 1900

DEVICE POSITION (cheek or rotated): Rotated

Accessory Model #: N/A

Simulate Temp when Measured: 19.0C

Antenna Position: Internal

Battery Model #: SNN5743A

Simulate Temp after Test: 19.0C

R4 TP-1250 GLYCOL SAM Expanded (Rev. 2)-9Jan03 Phantom; Right Hand Section; Position: (90°,180°); Frequency: 1880 MHz

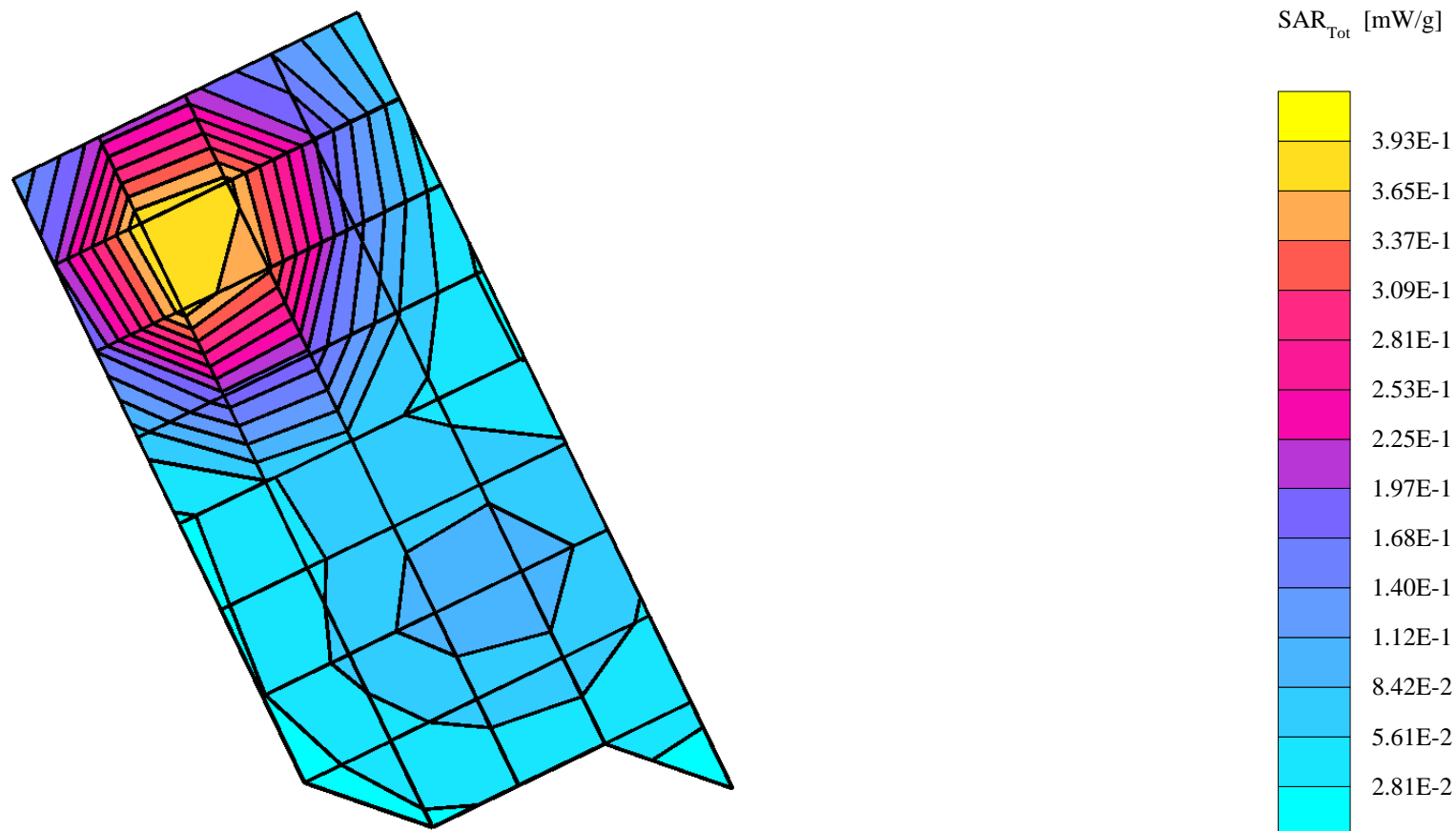
Probe: ET3DV6 - SN1514-IEEE Head2; ConvF(5.03,5.03,5.03); Crest factor: 8.0; 1880 MHz Head & Body: $\sigma = 1.46$ mho/m $\epsilon_r = 39.5$ $\rho = 1.00$ g/cm³

Cube 7x7x7: SAR (1g): 0.437 mW/g, SAR (10g): 0.259 mW/g, (Worst-case extrapolation)

Coarse: Dx = 15.0, Dy = 15.0, Dz = 15.0

Penetration depth: 9.7 (9.1, 10.5) [mm]

Powerdrift: 0.02 dB



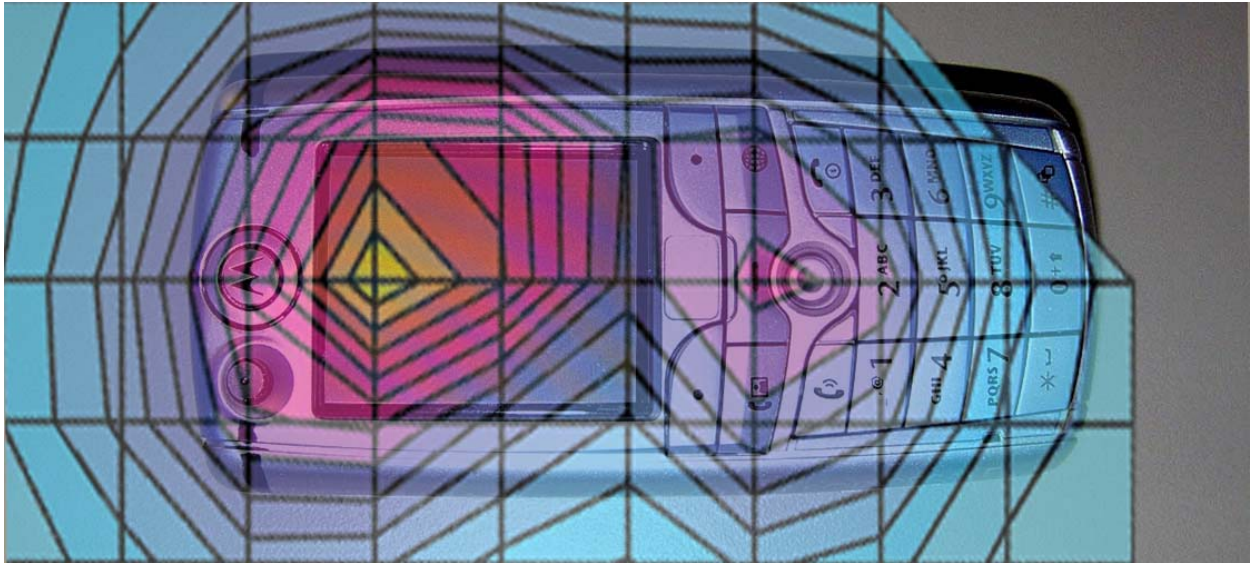


Figure 1. Typical 1900MHz Head Adjacent Contour Overlaid on Phone (Cheek Touch)

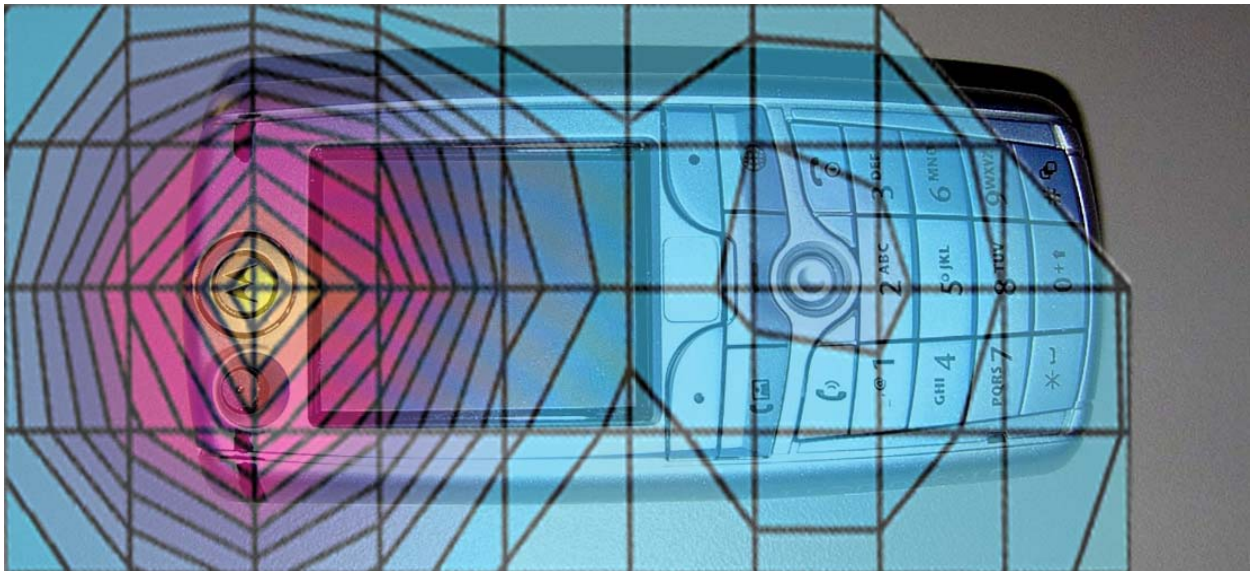


Figure 2. Typical 1900MHz Head Adjacent Contour Overlaid on Phone (Tilt Position)

Appendix 3

SAR distribution plots for Body Worn Configuration

sn: FB10322253

Ch# 661 / Pwr Step: 0
Type of Modulation: GSM 1900
Accessory Model #: N/A

Antenna Position: Internal
Battery Model #: SNN5743A

Flat Phantom #: 18
Front of Phone 15mm from Flat Phantom
Simulate Temp when Measured: 19.2C

Simulate Temp after Test: 18.7C

R4 Amy Twin Phantom Rev.4 (22Aug02) Phantom; section 2 Section; Position: (0°,0°); Frequency: 1880 MHz

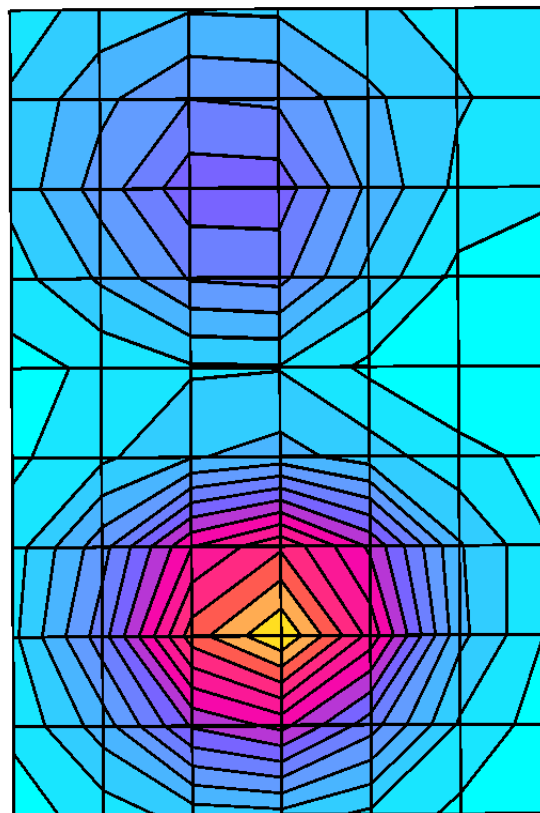
Probe: ET3DV6 - SN1514-FCC BODY2; ConvF(4.46,4.46,4.46); Crest factor: 8.0; 1880 MHz Head & Body: $\sigma = 1.59$ mho/m $\epsilon_r = 50.9$ $\rho = 1.00$ g/cm³

Cube 7x7x7: SAR (1g): 0.214 mW/g, SAR (10g): 0.130 mW/g, (Worst-case extrapolation)

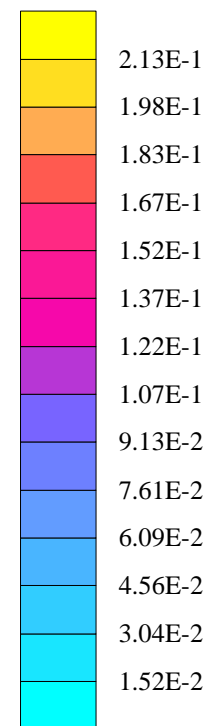
Coarse: Dx = 15.0, Dy = 15.0, Dz = 10.0

Penetration depth: 10.7 (9.5, 12.3) [mm]

Powerdrift: -0.04 dB



SAR_{Tot} [mW/g]



sn: FB10322253

Ch# 512 / Pwr Step: 0
Type of Modulation: GSM 1900
Accessory Model #: N/A

Antenna Position: Internal
Battery Model #: SNN5743A

Flat Phantom #: 18
Back of Phone 15mm from Flat Phantom
Simulate Temp when Measured: 19.2C

Simulate Temp after Test: 18.8C

R4 Amy Twin Phantom Rev.4 (22Aug02) Phantom; section 2 Section; Position: (0°,0°); Frequency: 1850 MHz

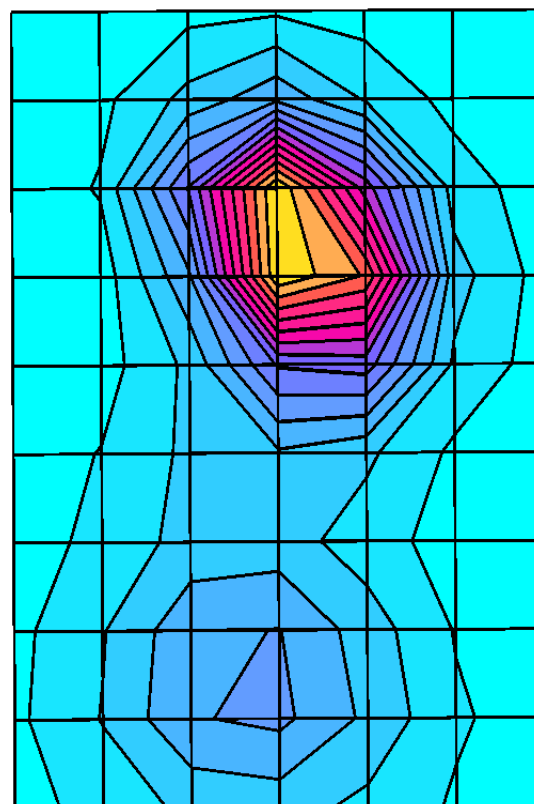
Probe: ET3DV6 - SN1514-FCC BODY2; ConvF(4.46,4.46,4.46); Crest factor: 8.0; 1880 MHz Head & Body: $\sigma = 1.59$ mho/m $\epsilon_r = 50.9$ $\rho = 1.00$ g/cm³

Cube 7x7x7: SAR (1g): 1.13 mW/g, SAR (10g): 0.604 mW/g, (Worst-case extrapolation)

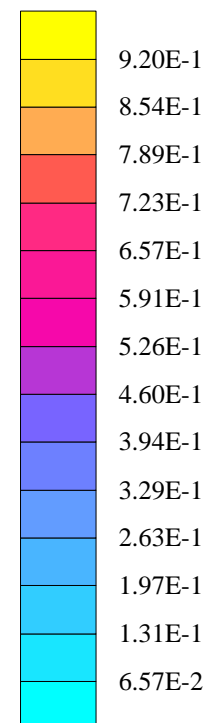
Coarse: Dx = 15.0, Dy = 15.0, Dz = 10.0

Penetration depth: 9.4 (8.7, 10.5) [mm]

Powerdrift: -0.02 dB



SAR_{Tot} [mW/g]

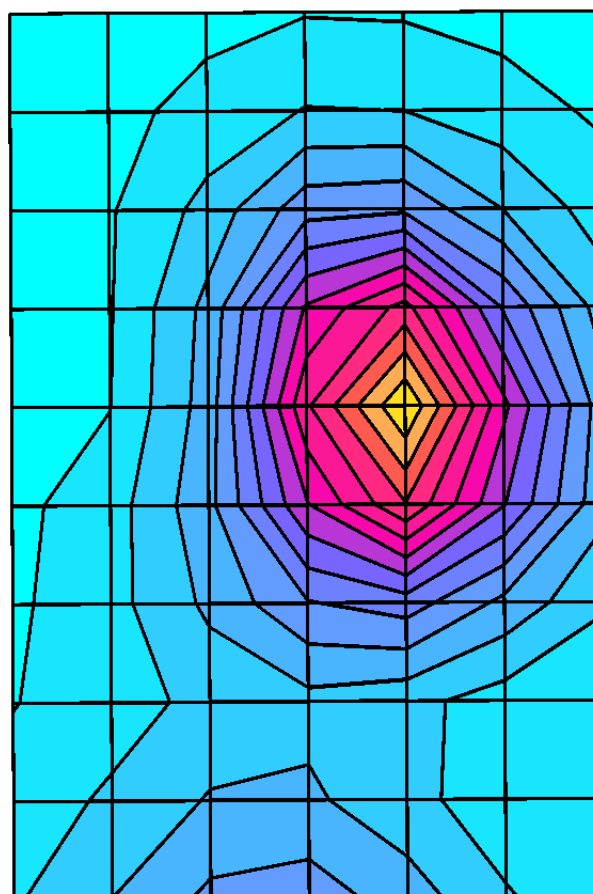


sn: FB10322253

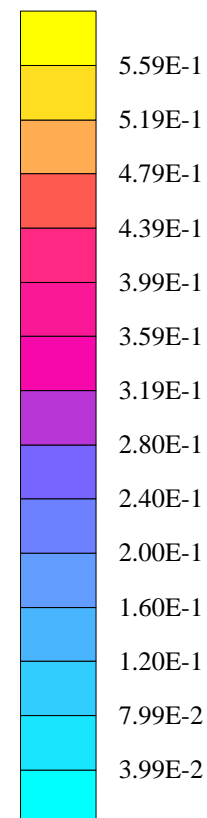
Ch# 661 Pwr Step: burst1 and =0 ota
 Type of Modulation: 1900 gprs
 Accessory Model # 25mm back

Antenna Position: INTERNAL
 Battery Model #: SNN5743

R4 Amy Twin Phantom Rev.4 (22Aug02) Phantom; section 2 Section; Position: (0°,0°); Frequency: 1880 MHz
 Probe: ET3DV6 - SN1514-FCC BODY2; ConvF(4.46,4.46,4.46); Crest factor: 4.0; 1880 MHz Head & Body: $\sigma = 1.47$ mho/m $\epsilon_r = 51.1$ $\rho = 1.00$ g/cm³
 Cube 7x7x7: SAR (1g): 0.552 mW/g, SAR (10g): 0.334 mW/g, (Worst-case extrapolation)
 Coarse: Dx = 15.0, Dy = 15.0, Dz = 10.0
 Penetration depth: 10.7 (9.4, 12.3) [mm]
 Powerdrift: -0.16 dB



SAR_{Tot} [mW/g]



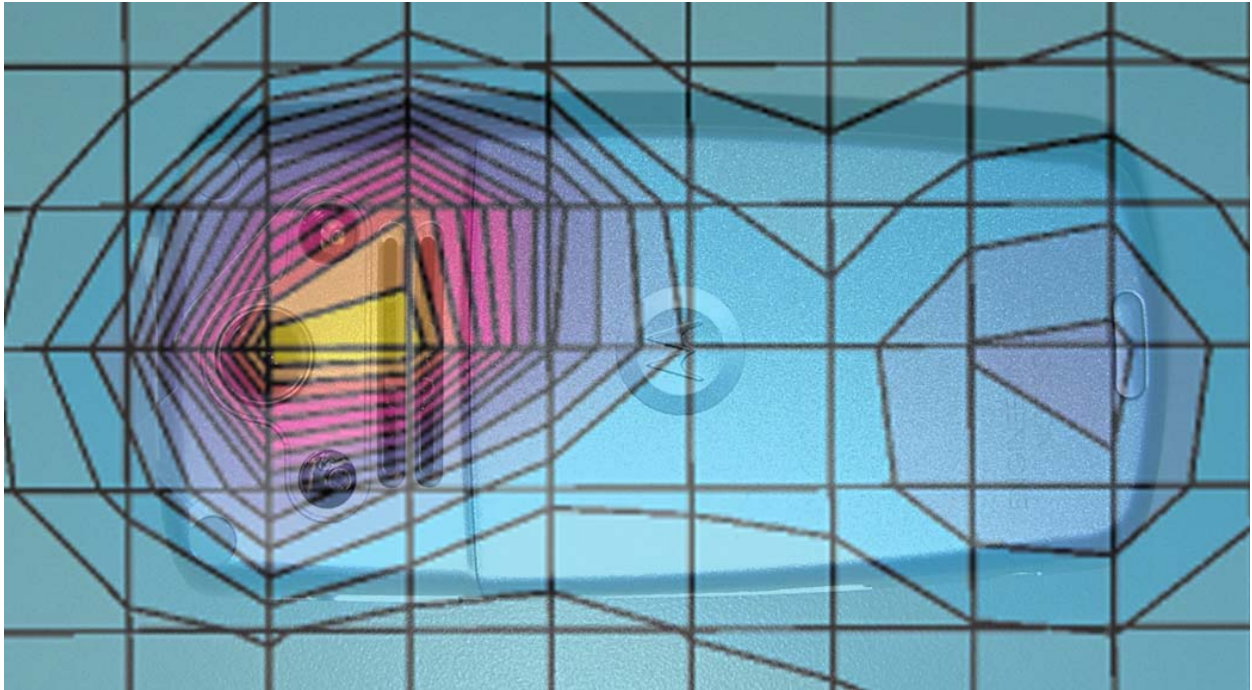


Figure 3. Typical 1900 MHz Body-Worn Contour Overlaid on Phone

Appendix 4
Probe Calibration Certificate

Client Motorola PCS

CALIBRATION CERTIFICATE

Object(s) ET3DV6 - SN 1514

Calibration procedure(s) QA-CAL-01 v2
Calibration procedure for dosimetric E-field probes

Calibration date: July 22, 2004

Condition of the calibrated item In Tolerance (according to the specific calibration document)

This calibration certificate documents the traceability to national standards, which realize the physical units of measurements (SI).
The measurements and the uncertainties with confidence probability are given on the following pages and are part of the certificate.

All calibrations have been conducted in the closed laboratory facility: environment temperature 22 +/- 2 degrees Celsius and humidity < 75%.

Calibration Equipment used (M&TE critical for calibration)

Model Type	ID #	Cal Date (Calibrated by, Certificate No.)	Scheduled Calibration
Power meter EPM E4419B	GB41293874	5-May-04 (METAS, No 251-00388)	May-05
Power sensor E4412A	MY41495277	5-May-04 (METAS, No 251-00388)	May-05
Reference 20 dB Attenuator	SN: 5086 (20b)	3-May-04 (METAS, No 251-00389)	May-05
Fluke Process Calibrator Type 702	SN: 6295603	8-Sep-03 (Sintrel SCS No. 5030020)	Sep-04
Power sensor HP 8461A	MY41092180	18-Sep-02 (SPEAG, in house check Oct03)	In house check: Oct 05
RF generator HP 8684C	US3642U01700	4-Aug-99 (SPEAG, in house check Aug02)	In house check: Aug05
Network Analyzer HP 8753E	US37390585	18-Oct-01 (SPEAG, in house check Oct03)	In house check: Oct 05

Calibrated by: Name: Nico Zahari, Function: Technician, Signature: 

Approved by: Name: Katja Pokorny, Function: Laboratory Director, Signature: 

Date Issued: July 22, 2004

This calibration certificate is issued as an intermediate solution until the accreditation process (based on ISO/IEC 17025 International Standard) for Calibration Laboratory of Schmid & Partner Engineering AG is completed.

Probe ET3DV6

SN:1514

Manufactured:	November 24, 1999
Last calibrated:	July 31, 2003
Recalibrated:	July 22, 2004

Calibrated for DASY Systems

(Note: non-compatible with DASY2 system!)

DASY - Parameters of Probe: ET3DV6 SN:1514

Sensitivity in Free Space		Diode Compression ^A		
NormX	1.71 $\mu\text{V}/(\text{V}/\text{m})^2$	DCP X	93	mV
NormY	1.89 $\mu\text{V}/(\text{V}/\text{m})^2$	DCP Y	93	mV
NormZ	1.81 $\mu\text{V}/(\text{V}/\text{m})^2$	DCP Z	93	mV

Sensitivity in Tissue Simulating Liquid (Conversion Factors)

Please see Page 7.

Boundary Effect

Head **900 MHz** **Typical SAR gradient: 5 % per mm**

Sensor Center to Phantom Surface Distance		3.7 mm	4.7 mm
SAR _{bc} [%]	Without Correction Algorithm	10.2	5.3
SAR _{bc} [%]	With Correction Algorithm	0.1	0.3

Head **1800 MHz** **Typical SAR gradient: 10 % per mm**

Sensor Center to Phantom Surface Distance		3.7 mm	4.7 mm
SAR _{bc} [%]	Without Correction Algorithm	14.0	9.1
SAR _{bc} [%]	With Correction Algorithm	0.1	0.0

Sensor Offset

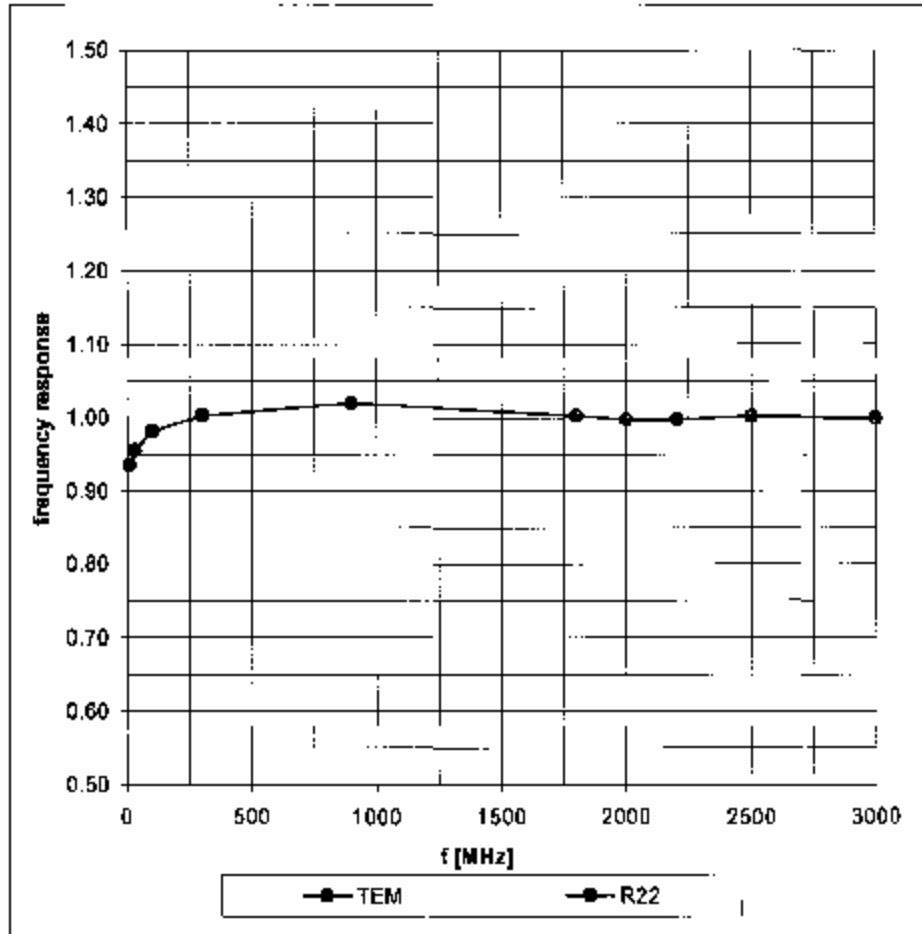
Probe Tip to Sensor Center **2.7** mm

The reported uncertainty of measurement is stated as the standard uncertainty of measurement multiplied by the coverage factor k=2, which for a normal distribution corresponds to a coverage probability of approximately 95%.

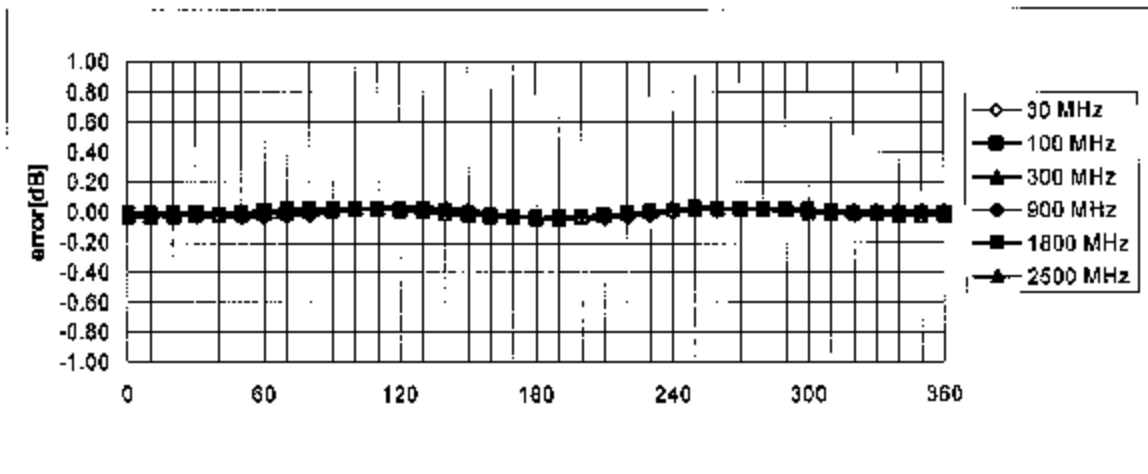
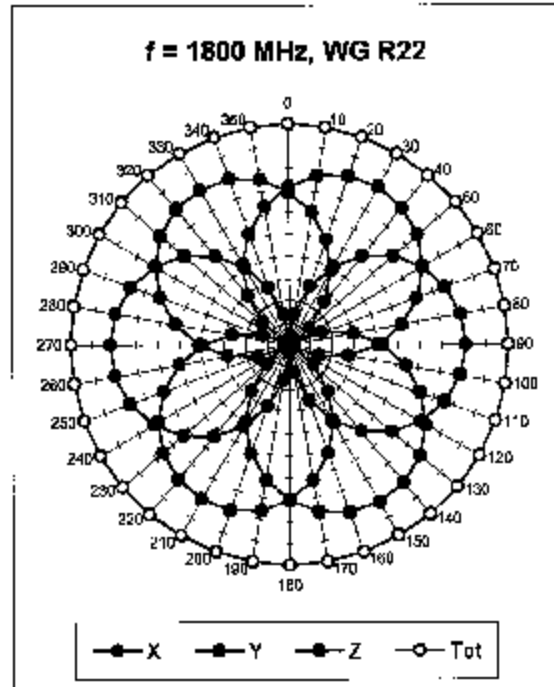
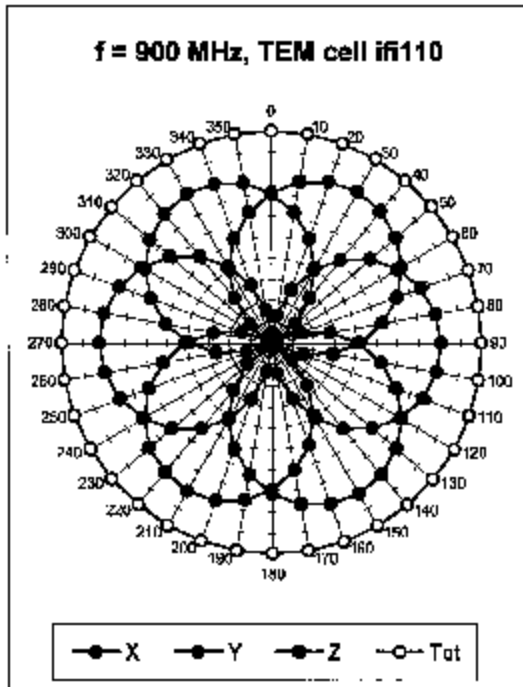
^A numerical linearization parameter; uncertainty not required

Frequency Response of E-Field

(TEM-Cell:iff110, Waveguide R22)

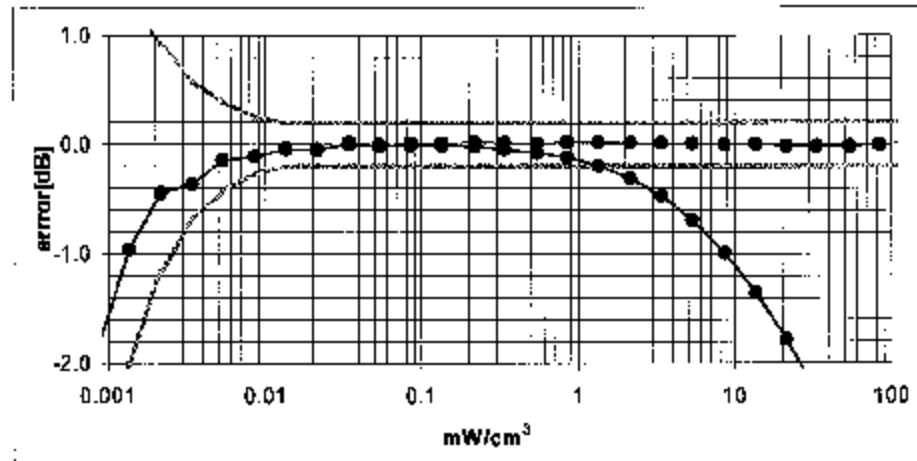
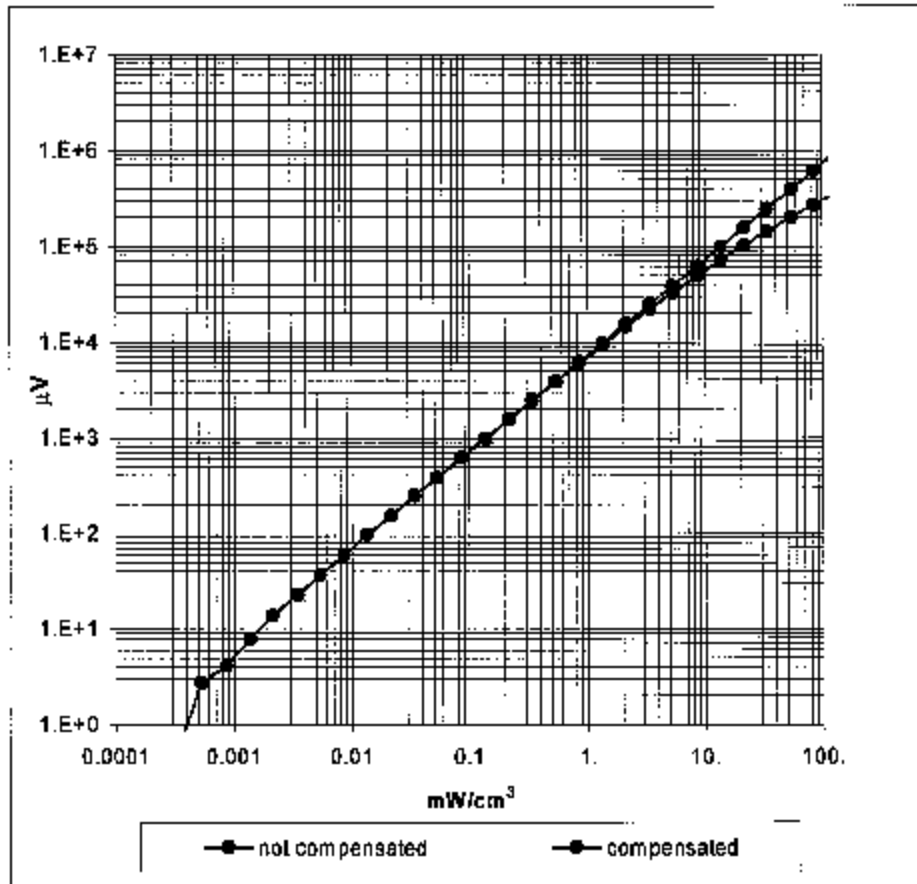


Receiving Pattern (ϕ), $\theta = 0^\circ$



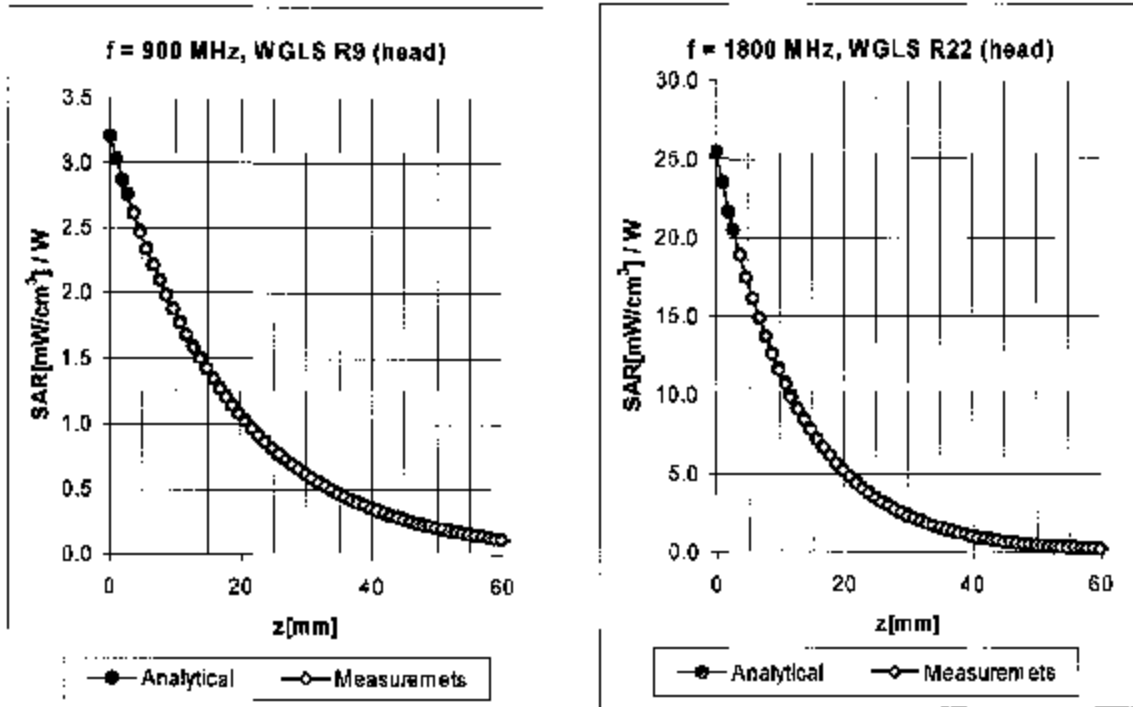
Axial Isotropy Error $< \pm 0.2$ dB

Dynamic Range f(SAR_{head}) (Waveguide R22)



Probe Linearity Error $< \pm 0.2$ dB

Conversion Factor Assessment

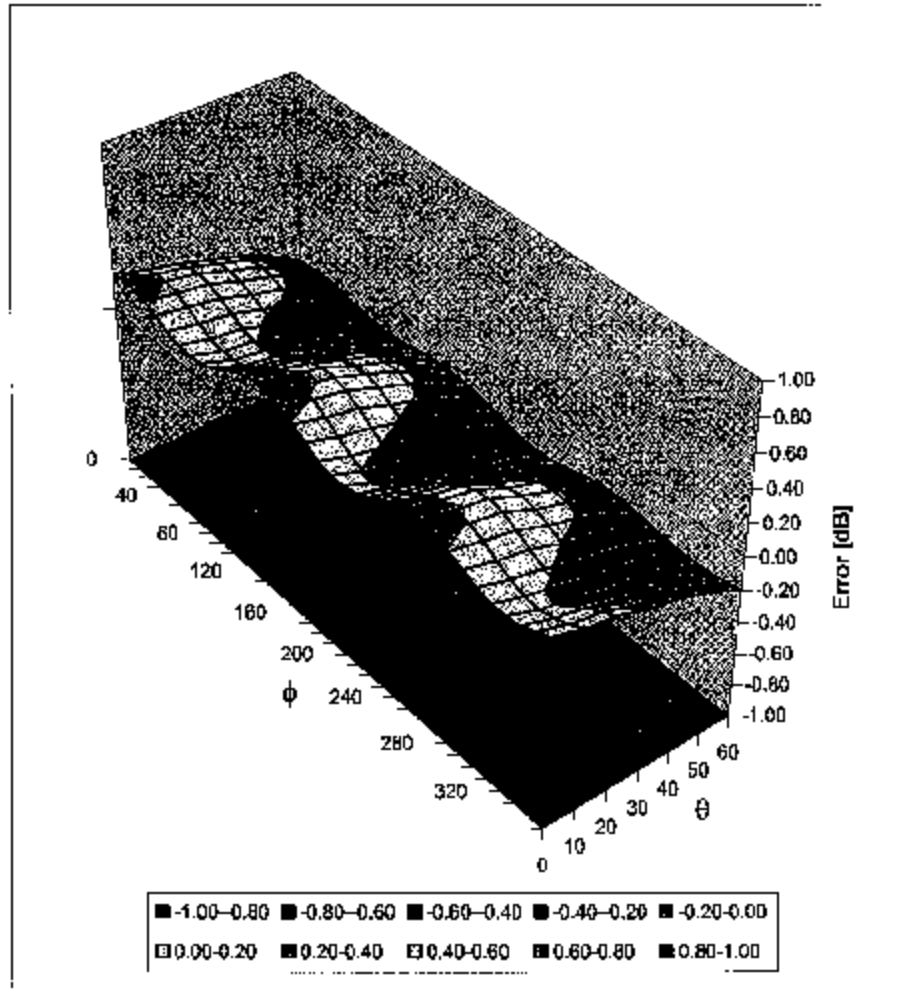


f [MHz]	Validity [MHz] ^B	Tissue	Permittivity	Conductivity	Alpha	Depth	ConvF Uncertainty
900	800-1000	Head	41.5 ± 5%	0.97 ± 5%	0.72	1.79	6.08 ± 9.5% (k=2)
1800	1710-1910	Head	40.0 ± 5%	1.40 ± 5%	0.53	2.53	5.03 ± 9.5% (k=2)
1950	1900-2000	Head	40.0 ± 5%	1.40 ± 5%	0.60	2.51	4.74 ± 9.5% (k=2)
2450	2400-2500	Head	39.2 ± 5%	1.80 ± 5%	1.11	1.81	4.46 ± 9.5% (k=2)
900	800-1000	Body	55.0 ± 5%	1.05 ± 5%	0.58	2.10	5.87 ± 9.5% (k=2)
1800	1710-1910	Body	53.3 ± 5%	1.52 ± 5%	0.61	2.67	4.46 ± 9.5% (k=2)
1950	1900-2000	Body	53.3 ± 5%	1.52 ± 5%	0.72	2.39	4.38 ± 9.5% (k=2)
2450	2400-2500	Body	52.7 ± 5%	1.95 ± 5%	1.81	1.30	4.24 ± 9.5% (k=2)

^B The stated uncertainty of calibration is according to P152B.

Deviation from Isotropy in HSL

Error (θ, ϕ), $f = 900$ MHz



Spherical Isotropy Error $< \pm 0.4$ dB

Appendix 5
Dipole Characterization Certificate

Certification of System Performance Check Targets

Based on APP-0396

-Historical Data-

	835MHz	900MHz	1800MHz	1900MHz	
IEEE1528 Target: Advanced Extrapolation	9.5	10.8	38.1	39.7	(W/kg)
Measurement Uncertainty (k=1):	9.0%	9.0%	9.0%	9.0%	
Measurement Period:	1-July-03 to 1-Apr-04	1-July-03 to 1-Apr-04	1-July-03 to 1-Apr-04	1-July-03 to 1-Apr-04	
# of tests performed:	214	1148	1135	62	
Grand Average: Worst Case Extrapolation	10.0	11.4	40.7	42.0	(W/kg)
% Delta (Average - IEEE1528 Target)	5.3%	5.6%	6.8%	5.8%	
Is % Delta <= Measurement Uncertainty?	Yes	Yes	Yes	Yes	
Accept/Reject <u>Average</u> as new system performance check target?	ACCEPT	ACCEPT	ACCEPT	ACCEPT	
	Applicable 835MHz Dipole Serial Numbers:	Applicable 900MHz Dipole Serial Numbers:	Applicable 1800MHz Dipole Serial Numbers:	Applicable 1900MHz Dipole Serial Numbers:	
	420(TR), 421(TR)	77, 78	246(TR), 250(TR)	514(TR), 518(TR)	
	422(TR), 423(TR)	79, 80	251(TR), 258(TR)	519(TR), 520(TR)	
	424(TR), 425(TR)	91, 92	259(TR), 262(TR)	523(TR), 524(TR)	
	431(TR), 432(TR)	93, 94	263(TR), 271(TR)	526(TR), 527(TR)	
	433(TR), 434(TR)	95, 96	272(TR), 273(TR)	528(TR), 529(TR)	
	436(TR)	97, 55	276(TR), 277(TR)	530(TR), 533(TR)	
			279(TR), 280(TR)		
			281(TR), 282(TR)		
			283(TR), 284(TR)		

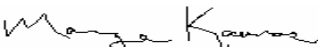
-New System Performance Check Targets- per APP-0396

(based on analysis of historical data)

Frequency	SAR Target (W/kg)	Permittivity	Conductivity (S/m)
835MHz	10.0	41.5 ± 5%	0.90 ± 5%
900MHz	11.4	41.5 ± 5%	0.97 ± 5%
1800MHz	40.7	40.0 ± 5%	1.40 ± 5%
1900MHz	42.0	40.0 ± 5%	1.40 ± 5%

-Approvals-

Submitted by: Date:

Signed: 

Comments:

Approved by: Date:

Signed: 

Comments:

Appendix 6
Measurement Uncertainty Budget

Uncertainty Budget for Device Under Test									
Probe Calibration	E.2.1	9.5	N	2.00	1	1	4.8	4.8	∞
Axial Isotropy	E.2.2	4.7	R	1.73	0.707	0.707	1.9	1.9	∞
Spherical Isotropy	E.2.2	9.6	R	1.73	0.707	0.707	3.9	3.9	∞
Boundary Effect	E.2.3	5.8	R	1.73	1	1	3.3	3.3	∞
Linearity	E.2.4	4.7	R	1.73	1	1	2.7	2.7	∞
System Detection Limits	E.2.5	1.0	R	1.73	1	1	0.6	0.6	∞
Readout Electronics	E.2.6	1.0	N	1.00	1	1	1.0	1.0	∞
Response Time	E.2.7	0.8	R	1.73	1	1	0.5	0.5	∞
Integration Time	E.2.8	1.3	R	1.73	1	1	0.8	0.8	∞
RF Ambient Conditions	E.6.1	3.0	R	1.73	1	1	1.7	1.7	∞
Probe Positioner Mechanical Tolerance	E.6.2	0.3	R	1.73	1	1	0.2	0.2	∞
Probe Positioning with respect to Phantom Shell	E.6.3	1.1	R	1.73	1	1	0.6	0.6	∞
Extrapolation, interpolation and Integration Algorithms for Max. SAR Evaluation	E.5	3.9	R	1.73	1	1	2.3	2.3	∞
Test Sample Positioning	E.4.2	3.6	N	1.00	1	1	3.6	3.6	29
Device Holder Uncertainty	E.4.1	2.8	N	1.00	1	1	2.8	2.8	8
Output Power Variation - SAR drift measurement	6.6.2	5.0	R	1.73	1	1	2.9	2.9	∞
Phantom Uncertainty (shape and thickness tolerances)	E.3.1	4.0	R	1.73	1	1	2.3	2.3	∞
Liquid Conductivity - deviation from target values	E.3.2	5.0	R	1.73	0.64	0.43	1.8	1.2	∞
Liquid Conductivity - measurement uncertainty	E.3.3	10.0	R	1.73	0.64	0.43	3.7	2.5	∞
Liquid Permittivity - deviation from target values	E.3.2	10.0	R	1.73	0.6	0.49	3.5	2.8	∞
Liquid Permittivity - measurement uncertainty	E.3.3	5.0	R	1.73	0.6	0.49	1.7	1.4	∞

Uncertainty Budget for System Performance Check (dipole & flat phantom)

<i>a</i>	<i>b</i>	<i>c</i>	<i>d</i>	$e = f(d,k)$	<i>f</i>	<i>g</i>	$h = c \times f / e$	$i = c \times g / e$	<i>k</i>
Uncertainty Component	Sec.	Tol. (± %)	Prob. Dist.	Div.	<i>c_i</i> (1 g)	<i>c_i</i> (10 g)	1 g <i>u_i</i> (±%)	10 g <i>u_i</i> (±%)	<i>v_i</i>
Measurement System									
Probe Calibration	E.2.1	9.5	N	2.00	1	1	4.8	4.8	∞
Axial Isotropy	E.2.2	4.7	R	1.73	1	1	2.7	2.7	∞
Spherical Isotropy	E.2.2	9.6	R	1.73	0	0	0.0	0.0	∞
Boundary Effect	E.2.3	5.8	R	1.73	1	1	3.3	3.3	∞
Linearity	E.2.4	4.7	R	1.73	1	1	2.7	2.7	∞
System Detection Limits	E.2.5	1.0	R	1.73	1	1	0.6	0.6	∞
Readout Electronics	E.2.6	1.0	N	1.00	1	1	1.0	1.0	∞
Response Time	E.2.7	0.0	R	1.73	1	1	0.0	0.0	∞
Integration Time	E.2.8	0.0	R	1.73	1	1	0.0	0.0	∞
RF Ambient Conditions	E.6.1	3.0	R	1.73	1	1	1.7	1.7	∞
Probe Positioner Mechanical Tolerance	E.6.2	0.3	R	1.73	1	1	0.2	0.2	∞
Probe Positioning with respect to Phantom Shell	E.6.3	1.1	R	1.73	1	1	0.6	0.6	∞
Extrapolation, interpolation and Integration Algorithms for Max. SAR Evaluation	E.5	3.9	R	1.73	1	1	2.3	2.3	∞
Dipole									
Dipole Axis to Liquid Distance	8, E.4.2	1.0	R	1.73	1	1	0.6	0.6	∞
Input Power and SAR Drift Measurement	8, 6.6.2	4.7	R	1.73	1	1	2.7	2.7	∞
Phantom and Tissue Parameters									
Phantom Uncertainty (shape and thickness tolerances)	E.3.1	4.0	R	1.73	1	1	2.3	2.3	∞
Liquid Conductivity - deviation from target values	E.3.2	5.0	R	1.73	0.64	0.43	1.8	1.2	∞
Liquid Conductivity - measurement uncertainty	E.3.3	10.0	R	1.73	0.64	0.43	3.7	2.5	∞
Liquid Permittivity - deviation from target values	E.3.2	10.0	R	1.73	0.6	0.49	3.5	2.8	∞
Liquid Permittivity - measurement uncertainty	E.3.3	5.0	R	1.73	0.6	0.49	1.7	1.4	∞
Combined Standard Uncertainty			RSS				10.16	9.43	99999
Expanded Uncertainty (95% CONFIDENCE LEVEL)			<i>k</i> =2				19.92	18.48	

Appendix 7

Photographs of the device under test



Figure 4. Front of Phone



Figure 5. Back of Phone



Figure 6. Front View; Cheek/Touch Position



Figure 7. Rear View; Cheek/Touch Position



Figure 8. Front View; Tilt Position



Figure 9. Rear View; Tilt Position



Figure 10. Body Worn testing