

## #01\_HAC\_E\_GSM850\_Voice\_Ch128

Communication System: GSM-FDD (TDMA, GMSK); Frequency: 824.2 MHz; Duty Cycle: 1:8.69961

Medium: Air Medium parameters used:  $\sigma = 0$  S/m,  $\epsilon_r = 1$ ;  $\rho = 0$  kg/m<sup>3</sup>

Ambient Temperature : 23.5 °C

### DASY5 Configuration

- Probe: EF3DV3 - SN4047; ConvF(1, 1, 1) @ 824.2 MHz; Calibrated: 2020/1/24
- Sensor-Surface: (Fix Surface)
- Electronics: DAE4 Sn1311; Calibrated: 2020/8/25
- Phantom: HAC Test Arch with AMCC; Type: SD HAC P01 BA;
- Measurement SW: DASY52, Version 52.10 (4); SEMCAD X Version 14.6.14 (7483)

### E Scan - ER3D: 15 mm from Probe Center to the Device/Hearing Aid Compatibility Test (101x101x1): Interpolated grid: dx=0.5000 mm, dy=0.5000 mm

Device Reference Point: 0, 0, -6.3 mm

Reference Value = 61.75 V/m; Power Drift = 0.06 dB

Applied MIF = 3.63 dB

RF audio interference level = 37.99 dBV/m

**Emission category: M4**

MIF scaled E-field

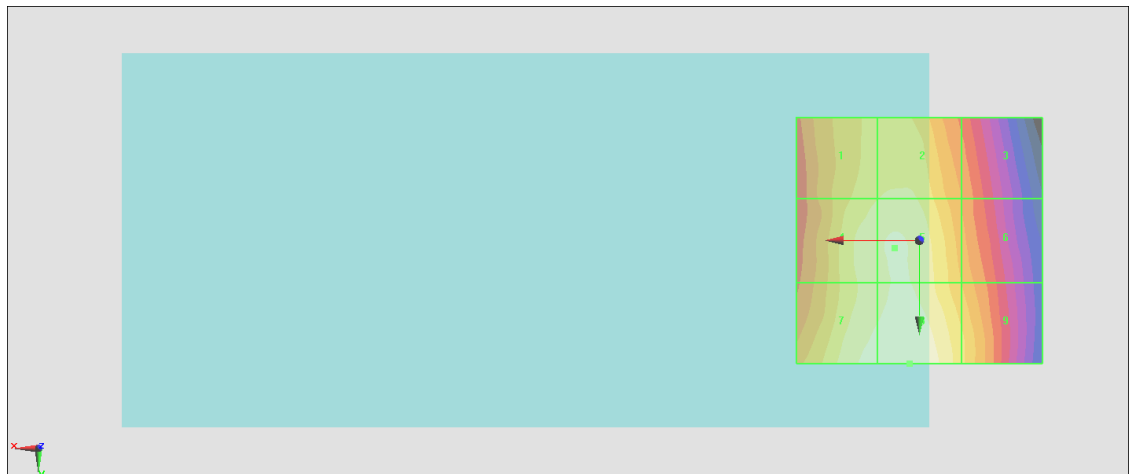
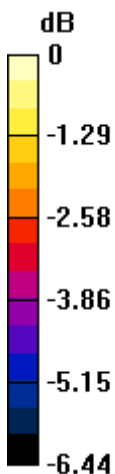
Grid 1 <b>M4</b> <b>37.12 dBV/m</b>	Grid 2 <b>M4</b> <b>37.23 dBV/m</b>	Grid 3 <b>M4</b> <b>35.86 dBV/m</b>
Grid 4 <b>M4</b> <b>37.5 dBV/m</b>	Grid 5 <b>M4</b> <b>37.61 dBV/m</b>	Grid 6 <b>M4</b> <b>36.29 dBV/m</b>
Grid 7 <b>M4</b> <b>37.81 dBV/m</b>	Grid 8 <b>M4</b> <b>37.99 dBV/m</b>	Grid 9 <b>M4</b> <b>36.85 dBV/m</b>

**Cursor:**

Total = 37.99 dBV/m

E Category: M4

Location: 2, 25, 8.7 mm



0 dB = 79.32 V/m = 37.99 dBV/m

## #02\_HAC\_E\_GSM850\_Voice\_Ch189

Communication System: GSM-FDD (TDMA, GMSK); Frequency: 836.4 MHz; Duty Cycle: 1:8.69961

Medium: Air Medium parameters used:  $\sigma = 0$  S/m,  $\epsilon_r = 1$ ;  $\rho = 0$  kg/m<sup>3</sup>

Ambient Temperature : 23.5 °C

### DASY5 Configuration

- Probe: EF3DV3 - SN4047; ConvF(1, 1, 1) @ 836.4 MHz; Calibrated: 2020/1/24
- Sensor-Surface: (Fix Surface)
- Electronics: DAE4 Sn1311; Calibrated: 2020/8/25
- Phantom: HAC Test Arch with AMCC; Type: SD HAC P01 BA;
- Measurement SW: DASY52, Version 52.10 (4); SEMCAD X Version 14.6.14 (7483)

### E Scan - ER3D: 15 mm from Probe Center to the Device/Hearing Aid Compatibility Test (101x101x1): Interpolated grid: dx=0.5000 mm, dy=0.5000 mm

Device Reference Point: 0, 0, -6.3 mm

Reference Value = 61.87 V/m; Power Drift = -0.04 dB

Applied MIF = 3.63 dB

RF audio interference level = 37.13 dBV/m

**Emission category: M4**

MIF scaled E-field

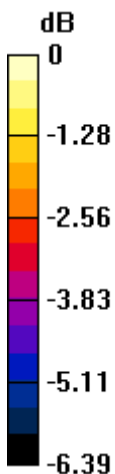
Grid 1 <b>M4</b> <b>36.19 dBV/m</b>	Grid 2 <b>M4</b> <b>36.33 dBV/m</b>	Grid 3 <b>M4</b> <b>35.01 dBV/m</b>
Grid 4 <b>M4</b> <b>36.54 dBV/m</b>	Grid 5 <b>M4</b> <b>36.67 dBV/m</b>	Grid 6 <b>M4</b> <b>35.53 dBV/m</b>
Grid 7 <b>M4</b> <b>36.95 dBV/m</b>	Grid 8 <b>M4</b> <b>37.13 dBV/m</b>	Grid 9 <b>M4</b> <b>36.04 dBV/m</b>

**Cursor:**

Total = 37.13 dBV/m

E Category: M4

Location: 2.5, 25, 8.7 mm



0 dB = 71.82 V/m = 37.12 dBV/m

### #03\_HAC\_E\_GSM850\_Voice\_Ch251

Communication System: GSM-FDD (TDMA, GMSK); Frequency: 848.8 MHz; Duty Cycle: 1:8.69961

Medium: Air Medium parameters used:  $\sigma = 0$  S/m,  $\epsilon_r = 1$ ;  $\rho = 0$  kg/m<sup>3</sup>

Ambient Temperature : 23.5 °C

#### DASY5 Configuration

- Probe: EF3DV3 - SN4047; ConvF(1, 1, 1) @ 848.8 MHz; Calibrated: 2020/1/24
- Sensor-Surface: (Fix Surface)
- Electronics: DAE4 Sn1311; Calibrated: 2020/8/25
- Phantom: HAC Test Arch with AMCC; Type: SD HAC P01 BA;
- Measurement SW: DASY52, Version 52.10 (4); SEMCAD X Version 14.6.14 (7483)

### E Scan - ER3D: 15 mm from Probe Center to the Device/Hearing Aid Compatibility Test

**(101x101x1):** Interpolated grid: dx=0.5000 mm, dy=0.5000 mm

Device Reference Point: 0, 0, -6.3 mm

Reference Value = 57.31 V/m; Power Drift = 0.03 dB

Applied MIF = 3.63 dB

RF audio interference level = 36.32 dBV/m

**Emission category: M4**

MIF scaled E-field

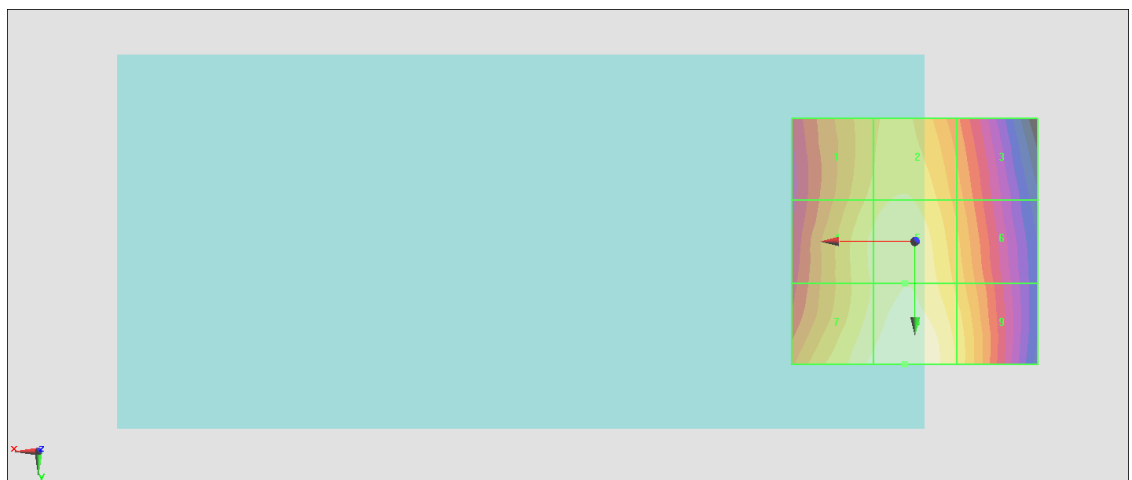
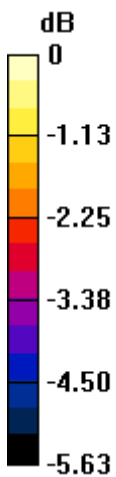
Grid 1 <b>M4</b> <b>35.35 dBV/m</b>	Grid 2 <b>M4</b> <b>35.62 dBV/m</b>	Grid 3 <b>M4</b> <b>34.67 dBV/m</b>
Grid 4 <b>M4</b> <b>35.68 dBV/m</b>	Grid 5 <b>M4</b> <b>35.94 dBV/m</b>	Grid 6 <b>M4</b> <b>35.09 dBV/m</b>
Grid 7 <b>M4</b> <b>36.06 dBV/m</b>	Grid 8 <b>M4</b> <b>36.32 dBV/m</b>	Grid 9 <b>M4</b> <b>35.5 dBV/m</b>

**Cursor:**

Total = 36.32 dBV/m

E Category: M4

Location: 2, 25, 8.7 mm



0 dB = 65.46 V/m = 36.32 dBV/m

## #04\_HAC\_E\_GSM1900\_Voice\_Ch512

Communication System: GSM-FDD (TDMA, GMSK); Frequency: 1850.2 MHz; Duty Cycle: 1:8.69961

Medium: Air Medium parameters used:  $\sigma = 0$  S/m,  $\epsilon_r = 1$ ;  $\rho = 0$  kg/m<sup>3</sup>

Ambient Temperature : 23.5 °C

### DASY5 Configuration

- Probe: EF3DV3 - SN4047; ConvF(1, 1, 1) @ 1850.2 MHz; Calibrated: 2020/1/24
- Sensor-Surface: (Fix Surface)
- Electronics: DAE4 Sn1311; Calibrated: 2020/8/25
- Phantom: HAC Test Arch with AMCC; Type: SD HAC P01 BA;
- Measurement SW: DASY52, Version 52.10 (4); SEMCAD X Version 14.6.14 (7483)

### E Scan - ER3D: 15 mm from Probe Center to the Device/Hearing Aid Compatibility Test (101x101x1): Interpolated grid: dx=0.5000 mm, dy=0.5000 mm

Device Reference Point: 0, 0, -6.3 mm

Reference Value = 8.071 V/m; Power Drift = -0.10 dB

Applied MIF = 3.63 dB

RF audio interference level = 23.91 dBV/m

**Emission category: M4**

MIF scaled E-field

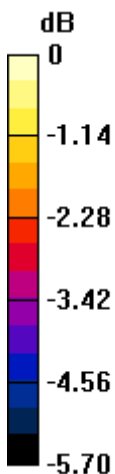
Grid 1 <b>M4</b> <b>23.74 dBV/m</b>	Grid 2 <b>M4</b> <b>23.91 dBV/m</b>	Grid 3 <b>M4</b> <b>22.05 dBV/m</b>
Grid 4 <b>M4</b> <b>21.49 dBV/m</b>	Grid 5 <b>M4</b> <b>21.79 dBV/m</b>	Grid 6 <b>M4</b> <b>20.5 dBV/m</b>
Grid 7 <b>M4</b> <b>23.43 dBV/m</b>	Grid 8 <b>M4</b> <b>23.9 dBV/m</b>	Grid 9 <b>M4</b> <b>23.49 dBV/m</b>

**Cursor:**

Total = 23.91 dBV/m

E Category: M4

Location: 1.5, -25, 8.7 mm



0 dB = 15.69 V/m = 23.91 dBV/m

### #05\_HAC\_E\_GSM1900\_Voice\_Ch661

Communication System: GSM-FDD (TDMA, GMSK); Frequency: 1880 MHz; Duty Cycle: 1:8.69961

Medium: Air Medium parameters used:  $\sigma = 0$  S/m,  $\epsilon_r = 1$ ;  $\rho = 0$  kg/m<sup>3</sup>

Ambient Temperature : 23.5 °C

#### DASY5 Configuration

- Probe: EF3DV3 - SN4047; ConvF(1, 1, 1) @ 1880 MHz; Calibrated: 2020/1/24
- Sensor-Surface: (Fix Surface)
- Electronics: DAE4 Sn1311; Calibrated: 2020/8/25
- Phantom: HAC Test Arch with AMCC; Type: SD HAC P01 BA;
- Measurement SW: DASY52, Version 52.10 (4); SEMCAD X Version 14.6.14 (7483)

### E Scan - ER3D: 15 mm from Probe Center to the Device/Hearing Aid Compatibility Test (101x101x1): Interpolated grid: dx=0.5000 mm, dy=0.5000 mm

Device Reference Point: 0, 0, -6.3 mm

Reference Value = 8.017 V/m; Power Drift = -0.06 dB

Applied MIF = 3.63 dB

RF audio interference level = 24.61 dBV/m

**Emission category: M4**

MIF scaled E-field

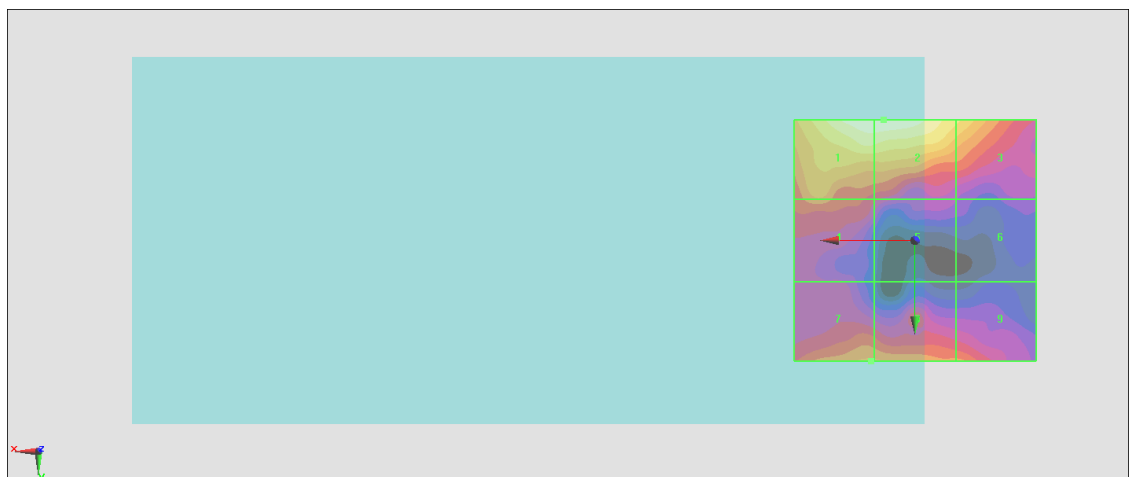
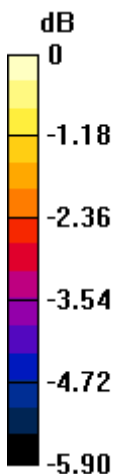
Grid 1 <b>M4</b> <b>24.58 dBV/m</b>	Grid 2 <b>M4</b> <b>24.61 dBV/m</b>	Grid 3 <b>M4</b> <b>23.58 dBV/m</b>
Grid 4 <b>M4</b> <b>22.58 dBV/m</b>	Grid 5 <b>M4</b> <b>21.62 dBV/m</b>	Grid 6 <b>M4</b> <b>20.71 dBV/m</b>
Grid 7 <b>M4</b> <b>22.76 dBV/m</b>	Grid 8 <b>M4</b> <b>22.75 dBV/m</b>	Grid 9 <b>M4</b> <b>22.42 dBV/m</b>

**Cursor:**

Total = 24.61 dBV/m

E Category: M4

Location: 6.5, -25, 8.7 mm



0 dB = 17.00 V/m = 24.61 dBV/m

## #06\_HAC\_E\_GSM1900\_Voice\_Ch810

Communication System: GSM-FDD (TDMA, GMSK); Frequency: 1909.8 MHz; Duty Cycle: 1:8.69961

Medium: Air Medium parameters used:  $\sigma = 0$  S/m,  $\epsilon_r = 1$ ;  $\rho = 0$  kg/m<sup>3</sup>

Ambient Temperature : 23.5 °C

### DASY5 Configuration

- Probe: EF3DV3 - SN4047; ConvF(1, 1, 1) @ 1909.8 MHz; Calibrated: 2020/1/24
- Sensor-Surface: (Fix Surface)
- Electronics: DAE4 Sn1311; Calibrated: 2020/8/25
- Phantom: HAC Test Arch with AMCC; Type: SD HAC P01 BA;
- Measurement SW: DASY52, Version 52.10 (4); SEMCAD X Version 14.6.14 (7483)

### E Scan - ER3D: 15 mm from Probe Center to the Device/Hearing Aid Compatibility Test

**(101x101x1):** Interpolated grid: dx=0.5000 mm, dy=0.5000 mm

Device Reference Point: 0, 0, -6.3 mm

Reference Value = 7.345 V/m; Power Drift = -0.05 dB

Applied MIF = 3.63 dB

RF audio interference level = 24.51 dBV/m

**Emission category: M4**

MIF scaled E-field

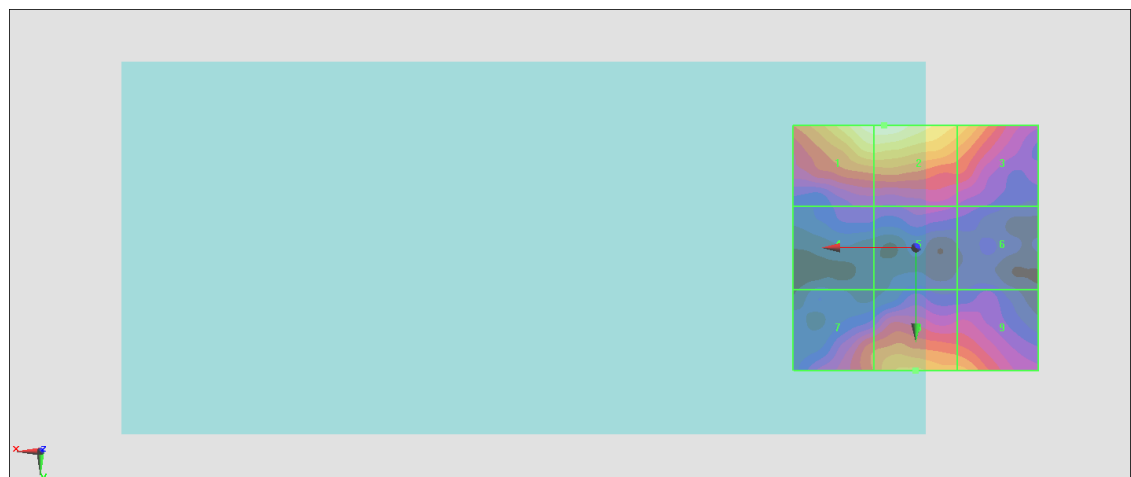
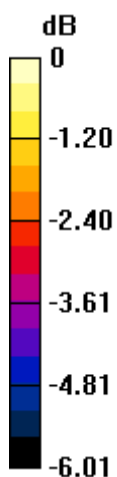
Grid 1 <b>M4</b> <b>24.44 dBV/m</b>	Grid 2 <b>M4</b> <b>24.51 dBV/m</b>	Grid 3 <b>M4</b> <b>23.3 dBV/m</b>
Grid 4 <b>M4</b> <b>20.56 dBV/m</b>	Grid 5 <b>M4</b> <b>20.76 dBV/m</b>	Grid 6 <b>M4</b> <b>20.47 dBV/m</b>
Grid 7 <b>M4</b> <b>22.25 dBV/m</b>	Grid 8 <b>M4</b> <b>23 dBV/m</b>	Grid 9 <b>M4</b> <b>22.72 dBV/m</b>

**Cursor:**

Total = 24.51 dBV/m

E Category: M4

Location: 6.5, -25, 8.7 mm



0 dB = 16.80 V/m = 24.51 dBV/m

### #07\_HAC\_E\_CDMA BC0\_1xRTT, RC1 SO3, 1/8th Rate\_Ch1013

Communication System: CDMA2000, RC1, SO3, 1/8th Rate 25 fr.; Frequency: 824.7 MHz; Duty Cycle: 1:17.746

Medium: Air Medium parameters used:  $\sigma = 0$  S/m,  $\epsilon_r = 1$ ;  $\rho = 0$  kg/m<sup>3</sup>

Ambient Temperature : 23.5 °C

**DASY5 Configuration**

- Probe: EF3DV3 - SN4047; ConvF(1, 1, 1) @ 824.7 MHz; Calibrated: 2020/1/24
- Sensor-Surface: (Fix Surface)
- Electronics: DAE4 Sn1311; Calibrated: 2020/8/25
- Phantom: HAC Test Arch with AMCC; Type: SD HAC P01 BA;
- Measurement SW: DASY52, Version 52.10 (4); SEMCAD X Version 14.6.14 (7483)

**E Scan - ER3D: 15 mm from Probe Center to the Device/Hearing Aid Compatibility Test (101x101x1):** Interpolated grid: dx=0.5000 mm, dy=0.5000 mm

Device Reference Point: 0, 0, -6.3 mm

Reference Value = 29.64 V/m; Power Drift = 0.03 dB

Applied MIF = 3.26 dB

RF audio interference level = 29.01 dBV/m

**Emission category: M4**

MIF scaled E-field

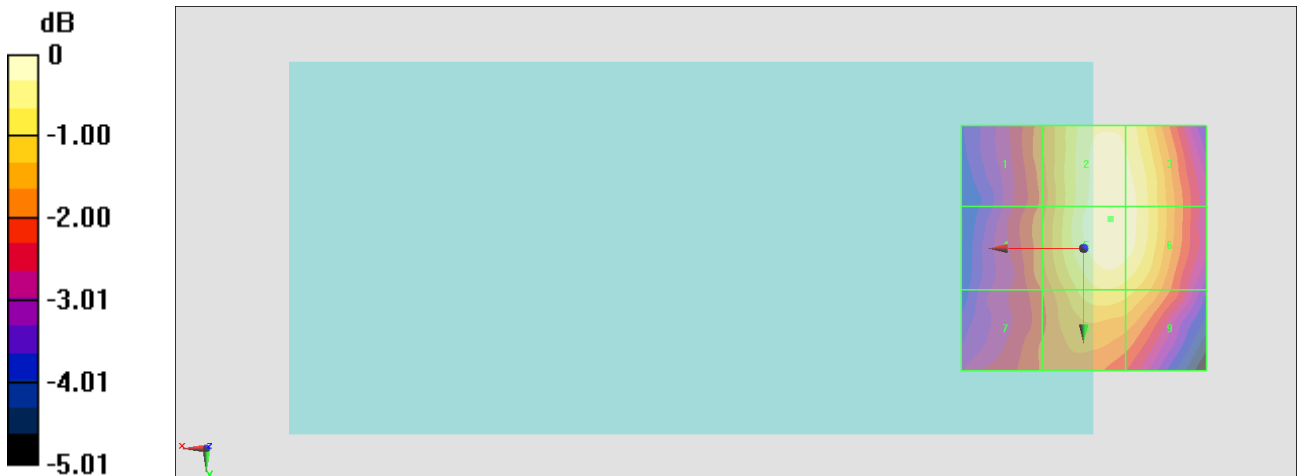
<b>Grid 1 M4</b> <b>27.29 dBV/m</b>	<b>Grid 2 M4</b> <b>28.98 dBV/m</b>	<b>Grid 3 M4</b> <b>28.89 dBV/m</b>
<b>Grid 4 M4</b> <b>27.31 dBV/m</b>	<b>Grid 5 M4</b> <b>29.01 dBV/m</b>	<b>Grid 6 M4</b> <b>28.89 dBV/m</b>
<b>Grid 7 M4</b> <b>27.06 dBV/m</b>	<b>Grid 8 M4</b> <b>28.32 dBV/m</b>	<b>Grid 9 M4</b> <b>28.18 dBV/m</b>

**Cursor:**

Total = 29.01 dBV/m

E Category: M4

Location: -5.5, -6, 8.7 mm



0 dB = 28.20 V/m = 29.00 dBV/m

### #08\_HAC\_E\_CDMA BC0\_ 1xRTT, RC1 SO3, 1/8th Rate\_Ch384

Communication System: CDMA2000, RC1, SO3, 1/8th Rate 25 fr.; Frequency: 836.52 MHz; Duty Cycle: 1:17.746

Medium: Air Medium parameters used:  $\sigma = 0$  S/m,  $\epsilon_r = 1$ ;  $\rho = 0$  kg/m<sup>3</sup>

Ambient Temperature : 23.5 °C

#### DASY5 Configuration

- Probe: EF3DV3 - SN4047; ConvF(1, 1, 1) @ 836.52 MHz; Calibrated: 2020/1/24
- Sensor-Surface: (Fix Surface)
- Electronics: DAE4 Sn1311; Calibrated: 2020/8/25
- Phantom: HAC Test Arch with AMCC; Type: SD HAC P01 BA;
- Measurement SW: DASY52, Version 52.10 (4); SEMCAD X Version 14.6.14 (7483)

#### E Scan - ER3D: 15 mm from Probe Center to the Device/Hearing Aid Compatibility Test (101x101x1): Interpolated grid: dx=0.5000 mm, dy=0.5000 mm

Device Reference Point: 0, 0, -6.3 mm

Reference Value = 25.80 V/m; Power Drift = -0.05 dB

Applied MIF = 3.26 dB

RF audio interference level = 28.31 dBV/m

**Emission category: M4**

MIF scaled E-field

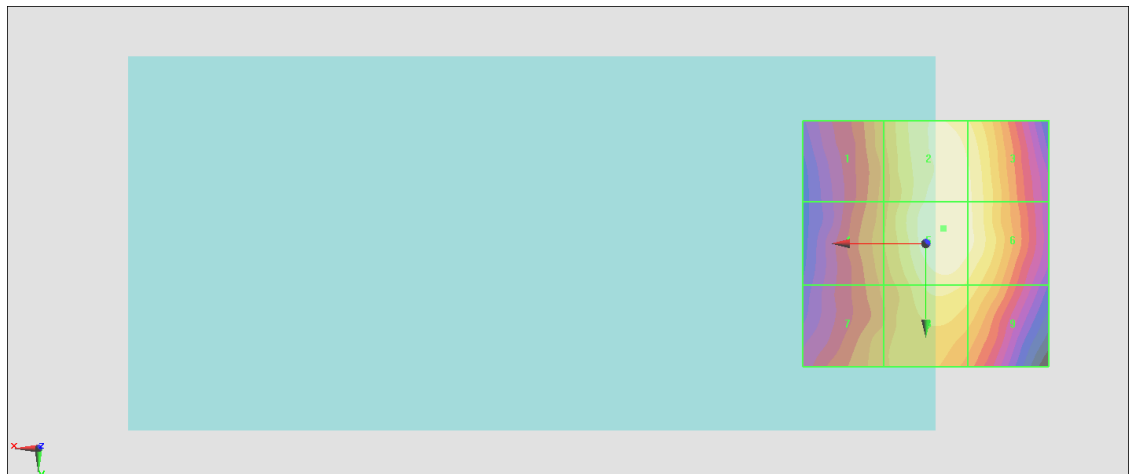
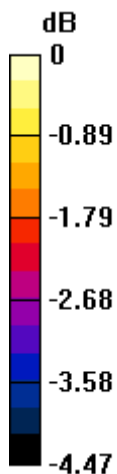
<b>Grid 1 M4</b> <b>27.1 dBV/m</b>	<b>Grid 2 M4</b> <b>28.29 dBV/m</b>	<b>Grid 3 M4</b> <b>28.1 dBV/m</b>
<b>Grid 4 M4</b> <b>27.11 dBV/m</b>	<b>Grid 5 M4</b> <b>28.31 dBV/m</b>	<b>Grid 6 M4</b> <b>28.13 dBV/m</b>
<b>Grid 7 M4</b> <b>27.06 dBV/m</b>	<b>Grid 8 M4</b> <b>27.85 dBV/m</b>	<b>Grid 9 M4</b> <b>27.65 dBV/m</b>

**Cursor:**

Total = 28.31 dBV/m

E Category: M4

Location: -3.5, -3, 8.7 mm



0 dB = 26.04 V/m = 28.31 dBV/m

### #09\_HAC\_E\_CDMA BC0\_ 1xRTT, RC1 SO3, 1/8th Rate\_Ch777

Communication System: CDMA2000, RC1, SO3, 1/8th Rate 25 fr.; Frequency: 848.31 MHz; Duty Cycle: 1:17.746

Medium: Air Medium parameters used:  $\sigma = 0$  S/m,  $\epsilon_r = 1$ ;  $\rho = 0$  kg/m<sup>3</sup>

Ambient Temperature : 23.5 °C

#### DASY5 Configuration

- Probe: EF3DV3 - SN4047; ConvF(1, 1, 1) @ 848.31 MHz; Calibrated: 2020/1/24
- Sensor-Surface: (Fix Surface)
- Electronics: DAE4 Sn1311; Calibrated: 2020/8/25
- Phantom: HAC Test Arch with AMCC; Type: SD HAC P01 BA;
- Measurement SW: DASY52, Version 52.10 (4); SEMCAD X Version 14.6.14 (7483)

#### E Scan - ER3D: 15 mm from Probe Center to the Device/Hearing Aid Compatibility Test (101x101x1): Interpolated grid: dx=0.5000 mm, dy=0.5000 mm

Device Reference Point: 0, 0, -6.3 mm

Reference Value = 27.70 V/m; Power Drift = -0.05 dB

Applied MIF = 3.26 dB

RF audio interference level = 28.75 dBV/m

**Emission category: M4**

MIF scaled E-field

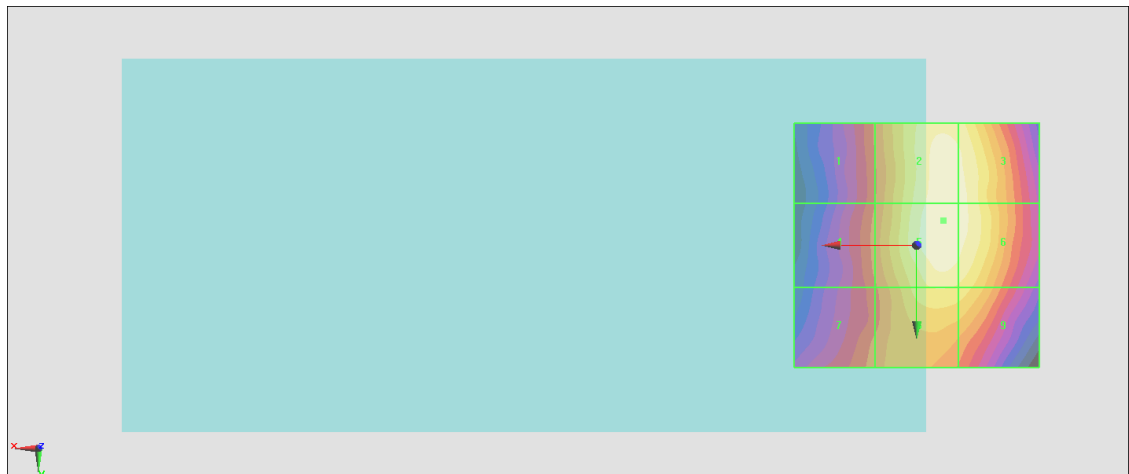
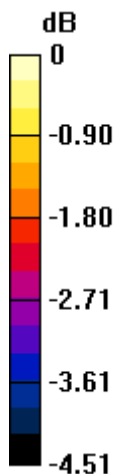
Grid 1 <b>M4</b> <b>27.01 dBV/m</b>	Grid 2 <b>M4</b> <b>28.65 dBV/m</b>	Grid 3 <b>M4</b> <b>28.6 dBV/m</b>
Grid 4 <b>M4</b> <b>27.09 dBV/m</b>	Grid 5 <b>M4</b> <b>28.75 dBV/m</b>	Grid 6 <b>M4</b> <b>28.62 dBV/m</b>
Grid 7 <b>M4</b> <b>27.1 dBV/m</b>	Grid 8 <b>M4</b> <b>28.18 dBV/m</b>	Grid 9 <b>M4</b> <b>28.1 dBV/m</b>

**Cursor:**

Total = 28.75 dBV/m

E Category: M4

Location: -5.5, -5, 8.7 mm



0 dB = 27.39 V/m = 28.75 dBV/m

### #10\_HAC\_E\_CDMA BC1\_ 1xRTT, RC1 SO3, 1/8th Rate\_Ch25

Communication System: CDMA2000, RC1, SO3, 1/8th Rate 25 fr.; Frequency: 1851.25 MHz;Duty Cycle: 1:17.746

Medium: Air Medium parameters used:  $\sigma = 0$  S/m,  $\epsilon_r = 1$ ;  $\rho = 0$  kg/m<sup>3</sup>

Ambient Temperature : 23.5 °C

**DASY5 Configuration**

- Probe: EF3DV3 - SN4047; ConvF(1, 1, 1) @ 1851.25 MHz; Calibrated: 2020/1/24
- Sensor-Surface: (Fix Surface)
- Electronics: DAE4 Sn1311; Calibrated: 2020/8/25
- Phantom: HAC Test Arch with AMCC; Type: SD HAC P01 BA;
- Measurement SW: DASY52, Version 52.10 (4); SEMCAD X Version 14.6.14 (7483)

**E Scan - ER3D: 15 mm from Probe Center to the Device/Hearing Aid Compatibility Test (101x101x1):** Interpolated grid: dx=0.5000 mm, dy=0.5000 mm

Device Reference Point: 0, 0, -6.3 mm

Reference Value = 6.784 V/m; Power Drift = 0.02 dB

Applied MIF = 3.26 dB

RF audio interference level = 20.59 dBV/m

**Emission category: M4**

MIF scaled E-field

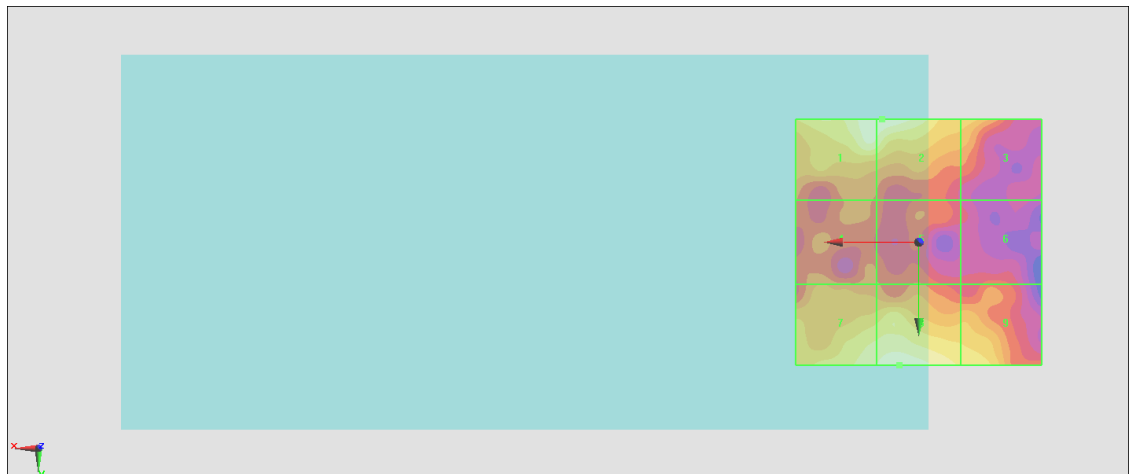
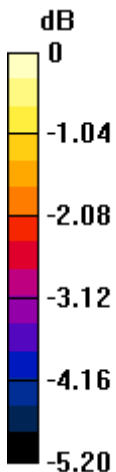
<b>Grid 1 M4</b> <b>20.57 dBV/m</b>	<b>Grid 2 M4</b> <b>20.59 dBV/m</b>	<b>Grid 3 M4</b> <b>19.57 dBV/m</b>
<b>Grid 4 M4</b> <b>18.86 dBV/m</b>	<b>Grid 5 M4</b> <b>18.57 dBV/m</b>	<b>Grid 6 M4</b> <b>18.39 dBV/m</b>
<b>Grid 7 M4</b> <b>20.26 dBV/m</b>	<b>Grid 8 M4</b> <b>20.58 dBV/m</b>	<b>Grid 9 M4</b> <b>19.84 dBV/m</b>

**Cursor:**

Total = 20.59 dBV/m

E Category: M4

Location: 7.5, -25, 8.7 mm



0 dB = 10.70 V/m = 20.59 dBV/m

### #11\_HAC\_E\_CDMA BC1\_ 1xRTT, RC1 SO3, 1/8th Rate\_Ch600

Communication System: CDMA2000, RC1, SO3, 1/8th Rate 25 fr.; Frequency: 1880 MHz; Duty Cycle: 1:17.746

Medium: Air Medium parameters used:  $\sigma = 0$  S/m,  $\epsilon_r = 1$ ;  $\rho = 0$  kg/m<sup>3</sup>

Ambient Temperature : 23.5 °C

**DASY5 Configuration**

- Probe: EF3DV3 - SN4047; ConvF(1, 1, 1) @ 1880 MHz; Calibrated: 2020/1/24
- Sensor-Surface: (Fix Surface)
- Electronics: DAE4 Sn1311; Calibrated: 2020/8/25
- Phantom: HAC Test Arch with AMCC; Type: SD HAC P01 BA;
- Measurement SW: DASY52, Version 52.10 (4); SEMCAD X Version 14.6.14 (7483)

**E Scan - ER3D: 15 mm from Probe Center to the Device/Hearing Aid Compatibility Test (101x101x1):** Interpolated grid: dx=0.5000 mm, dy=0.5000 mm

Device Reference Point: 0, 0, -6.3 mm

Reference Value = 6.634 V/m; Power Drift = 0.06 dB

Applied MIF = 3.26 dB

RF audio interference level = 21.24 dBV/m

**Emission category: M4**

MIF scaled E-field

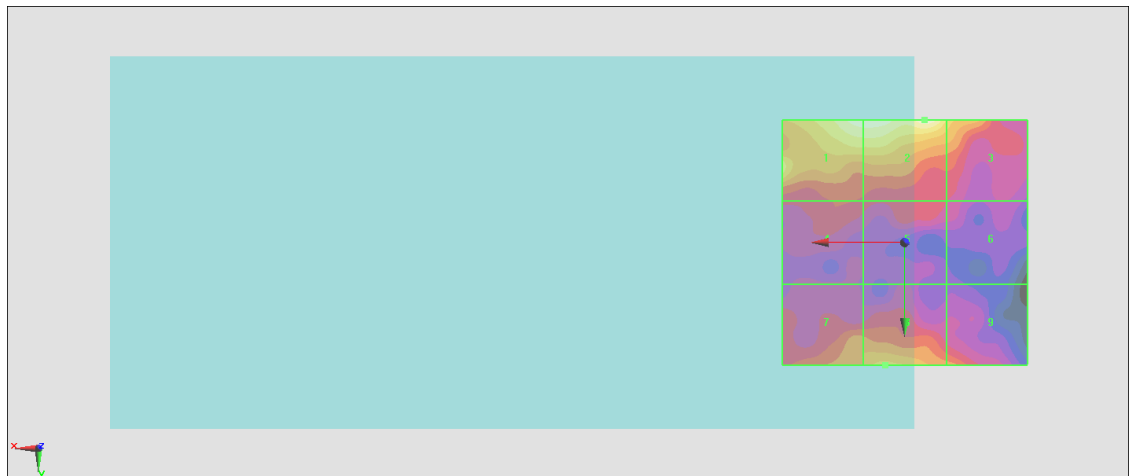
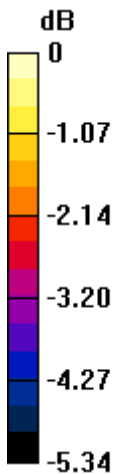
<b>Grid 1 M4</b> <b>21.13 dBV/m</b>	<b>Grid 2 M4</b> <b>21.24 dBV/m</b>	<b>Grid 3 M4</b> <b>20.18 dBV/m</b>
<b>Grid 4 M4</b> <b>18.81 dBV/m</b>	<b>Grid 5 M4</b> <b>18.73 dBV/m</b>	<b>Grid 6 M4</b> <b>18.42 dBV/m</b>
<b>Grid 7 M4</b> <b>19.49 dBV/m</b>	<b>Grid 8 M4</b> <b>20 dBV/m</b>	<b>Grid 9 M4</b> <b>19.36 dBV/m</b>

**Cursor:**

Total = 21.24 dBV/m

E Category: M4

Location: -4, -25, 8.7 mm



0 dB = 11.54 V/m = 21.24 dBV/m

## #12\_HAC\_E\_CDMA BC1\_ 1xRTT, RC1 SO3, 1/8th Rate\_Ch1175

Communication System: CDMA2000, RC1, SO3, 1/8th Rate 25 fr.; Frequency: 1908.75 MHz; Duty Cycle: 1:17.746

Medium: Air Medium parameters used:  $\sigma = 0$  S/m,  $\epsilon_r = 1$ ;  $\rho = 0$  kg/m<sup>3</sup>

Ambient Temperature : 23.5 °C

### DASY5 Configuration

- Probe: EF3DV3 - SN4047; ConvF(1, 1, 1) @ 1908.75 MHz; Calibrated: 2020/1/24
- Sensor-Surface: (Fix Surface)
- Electronics: DAE4 Sn1311; Calibrated: 2020/8/25
- Phantom: HAC Test Arch with AMCC; Type: SD HAC P01 BA;
- Measurement SW: DASY52, Version 52.10 (4); SEMCAD X Version 14.6.14 (7483)

### E Scan - ER3D: 15 mm from Probe Center to the Device/Hearing Aid Compatibility Test (101x101x1): Interpolated grid: dx=0.5000 mm, dy=0.5000 mm

Device Reference Point: 0, 0, -6.3 mm

Reference Value = 7.052 V/m; Power Drift = -0.04 dB

Applied MIF = 3.26 dB

RF audio interference level = 21.08 dBV/m

**Emission category: M4**

MIF scaled E-field

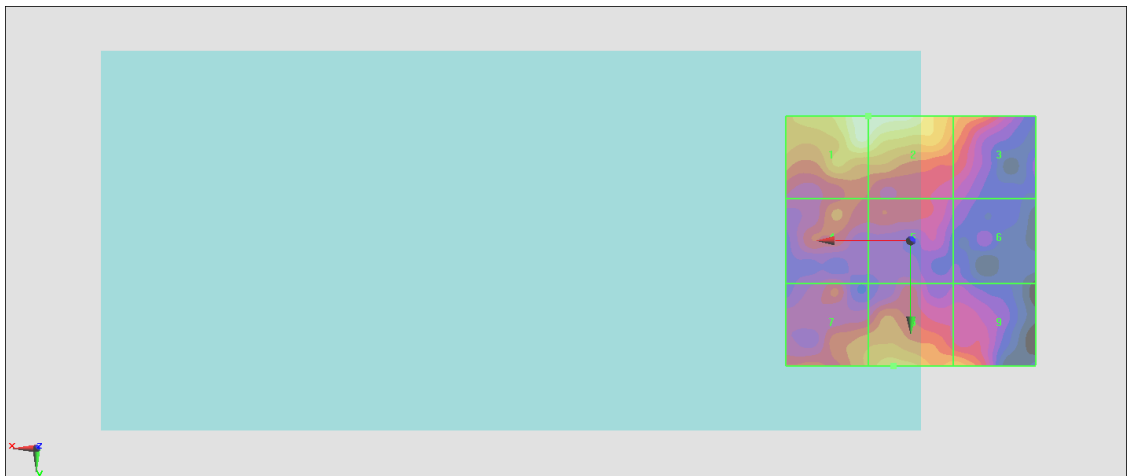
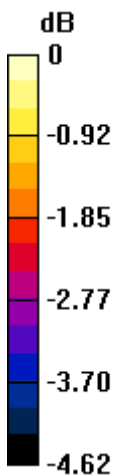
Grid 1 <b>M4</b> <b>21.08 dBV/m</b>	Grid 2 <b>M4</b> <b>21.08 dBV/m</b>	Grid 3 <b>M4</b> <b>19.75 dBV/m</b>
Grid 4 <b>M4</b> <b>19.31 dBV/m</b>	Grid 5 <b>M4</b> <b>18.94 dBV/m</b>	Grid 6 <b>M4</b> <b>18.24 dBV/m</b>
Grid 7 <b>M4</b> <b>19.64 dBV/m</b>	Grid 8 <b>M4</b> <b>20.05 dBV/m</b>	Grid 9 <b>M4</b> <b>19.88 dBV/m</b>

**Cursor:**

Total = 21.08 dBV/m

E Category: M4

Location: 8.5, -25, 8.7 mm



0 dB = 11.32 V/m = 21.08 dBV/m

### #13\_HAC\_E\_CDMA BC10\_1xRTT, RC1 SO3, 1/8th Rate\_Ch476

Communication System: CDMA2000, RC1, SO3, 1/8th Rate 25 fr.; Frequency: 817.9 MHz; Duty Cycle: 1:17.746

Medium: Air Medium parameters used:  $\sigma = 0$  S/m,  $\epsilon_r = 1$ ;  $\rho = 0$  kg/m<sup>3</sup>

Ambient Temperature : 23.5 °C

**DASY5 Configuration**

- Probe: EF3DV3 - SN4047; ConvF(1, 1, 1) @ 817.9 MHz; Calibrated: 2020/1/24
- Sensor-Surface: (Fix Surface)
- Electronics: DAE4 Sn1311; Calibrated: 2020/8/25
- Phantom: HAC Test Arch with AMCC; Type: SD HAC P01 BA;
- Measurement SW: DASY52, Version 52.10 (4); SEMCAD X Version 14.6.14 (7483)

**E Scan - ER3D: 15 mm from Probe Center to the Device/Hearing Aid Compatibility Test (101x101x1):** Interpolated grid: dx=0.5000 mm, dy=0.5000 mm

Device Reference Point: 0, 0, -6.3 mm

Reference Value = 29.30 V/m; Power Drift = -0.01 dB

Applied MIF = 3.26 dB

RF audio interference level = 29.57 dBV/m

**Emission category: M4**

MIF scaled E-field

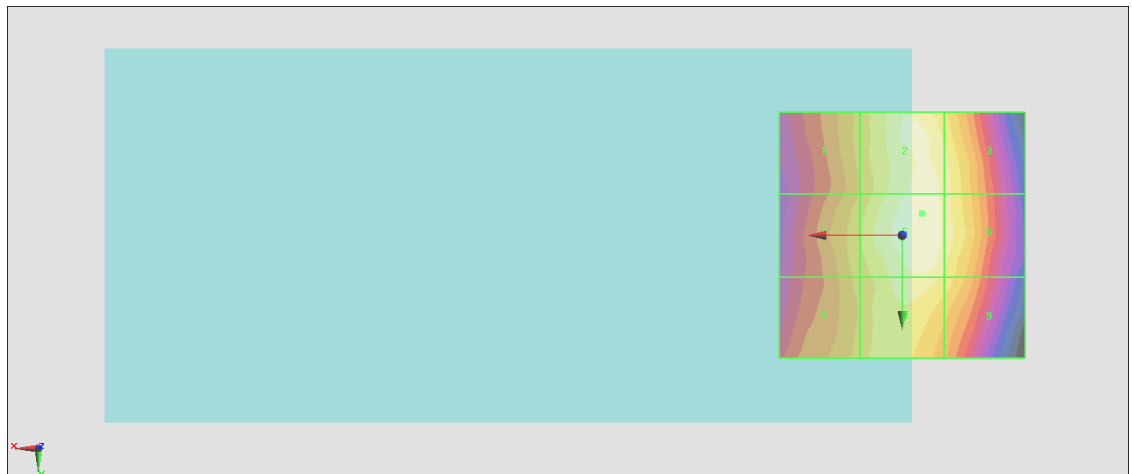
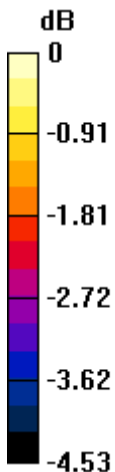
<b>Grid 1 M4</b> <b>28.51 dBV/m</b>	<b>Grid 2 M4</b> <b>29.48 dBV/m</b>	<b>Grid 3 M4</b> <b>29.17 dBV/m</b>
<b>Grid 4 M4</b> <b>28.65 dBV/m</b>	<b>Grid 5 M4</b> <b>29.57 dBV/m</b>	<b>Grid 6 M4</b> <b>29.22 dBV/m</b>
<b>Grid 7 M4</b> <b>28.51 dBV/m</b>	<b>Grid 8 M4</b> <b>29.21 dBV/m</b>	<b>Grid 9 M4</b> <b>28.91 dBV/m</b>

**Cursor:**

Total = 29.57 dBV/m

E Category: M4

Location: -4, -4.5, 8.7 mm



0 dB = 30.11 V/m = 29.57 dBV/m

### #14\_HAC\_E\_CDMA BC10\_ 1xRTT, RC1 SO3, 1/8th Rate\_Ch580

Communication System: CDMA2000, RC1, SO3, 1/8th Rate 25 fr.; Frequency: 820.5 MHz; Duty Cycle: 1:17.746

Medium: Air Medium parameters used:  $\sigma = 0$  S/m,  $\epsilon_r = 1$ ;  $\rho = 0$  kg/m<sup>3</sup>

Ambient Temperature : 23.5 °C

**DASY5 Configuration**

- Probe: EF3DV3 - SN4047; ConvF(1, 1, 1) @ 820.5 MHz; Calibrated: 2020/1/24
- Sensor-Surface: (Fix Surface)
- Electronics: DAE4 Sn1311; Calibrated: 2020/8/25
- Phantom: HAC Test Arch with AMCC; Type: SD HAC P01 BA;
- Measurement SW: DASY52, Version 52.10 (4); SEMCAD X Version 14.6.14 (7483)

**E Scan - ER3D: 15 mm from Probe Center to the Device/Hearing Aid Compatibility Test (101x101x1):** Interpolated grid: dx=0.5000 mm, dy=0.5000 mm

Device Reference Point: 0, 0, -6.3 mm

Reference Value = 29.66 V/m; Power Drift = -0.01 dB

Applied MIF = 3.26 dB

RF audio interference level = 29.73 dBV/m

**Emission category: M4**

MIF scaled E-field

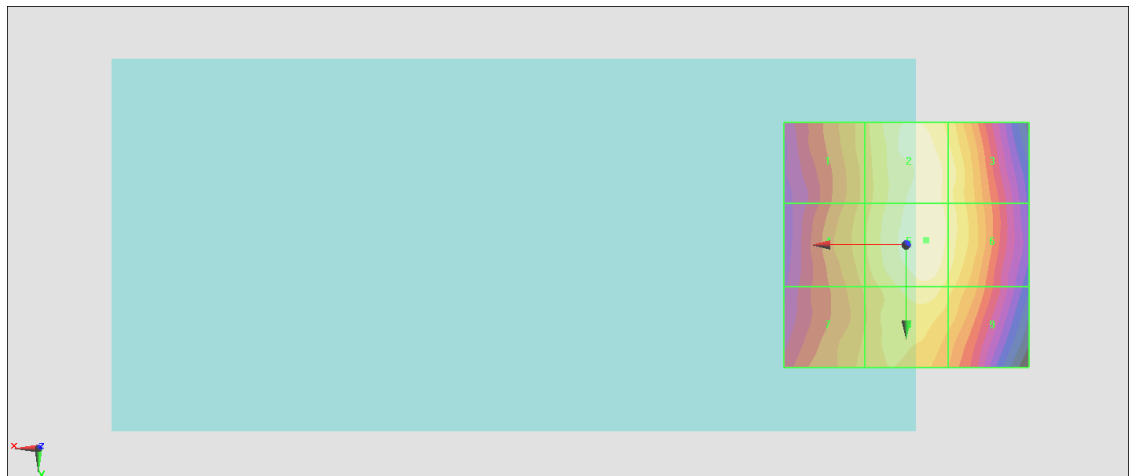
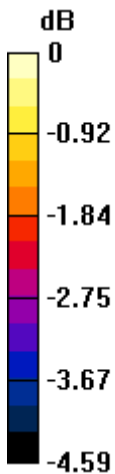
<b>Grid 1 M4</b> <b>28.7 dBV/m</b>	<b>Grid 2 M4</b> <b>29.63 dBV/m</b>	<b>Grid 3 M4</b> <b>29.34 dBV/m</b>
<b>Grid 4 M4</b> <b>28.77 dBV/m</b>	<b>Grid 5 M4</b> <b>29.73 dBV/m</b>	<b>Grid 6 M4</b> <b>29.37 dBV/m</b>
<b>Grid 7 M4</b> <b>28.61 dBV/m</b>	<b>Grid 8 M4</b> <b>29.34 dBV/m</b>	<b>Grid 9 M4</b> <b>28.98 dBV/m</b>

**Cursor:**

Total = 29.73 dBV/m

E Category: M4

Location: -4, -1, 8.7 mm



0 dB = 30.65 V/m = 29.73 dBV/m

### #15\_HAC\_E\_CDMA BC10\_ 1xRTT, RC1 SO3, 1/8th Rate\_Ch684

Communication System: CDMA2000, RC1, SO3, 1/8th Rate 25 fr.; Frequency: 823.1 MHz;Duty Cycle: 1:17.746

Medium: Air Medium parameters used:  $\sigma = 0$  S/m,  $\epsilon_r = 1$ ;  $\rho = 0$  kg/m<sup>3</sup>

Ambient Temperature : 23.5 °C

**DASY5 Configuration**

- Probe: EF3DV3 - SN4047; ConvF(1, 1, 1) @ 823.1 MHz; Calibrated: 2020/1/24
- Sensor-Surface: (Fix Surface)
- Electronics: DAE4 Sn1311; Calibrated: 2020/8/25
- Phantom: HAC Test Arch with AMCC; Type: SD HAC P01 BA;
- Measurement SW: DASY52, Version 52.10 (4); SEMCAD X Version 14.6.14 (7483)

**E Scan - ER3D: 15 mm from Probe Center to the Device/Hearing Aid Compatibility Test (101x101x1):** Interpolated grid: dx=0.5000 mm, dy=0.5000 mm

Device Reference Point: 0, 0, -6.3 mm

Reference Value = 29.17 V/m; Power Drift = -0.00 dB

Applied MIF = 3.26 dB

RF audio interference level = 29.50 dBV/m

**Emission category: M4**

MIF scaled E-field

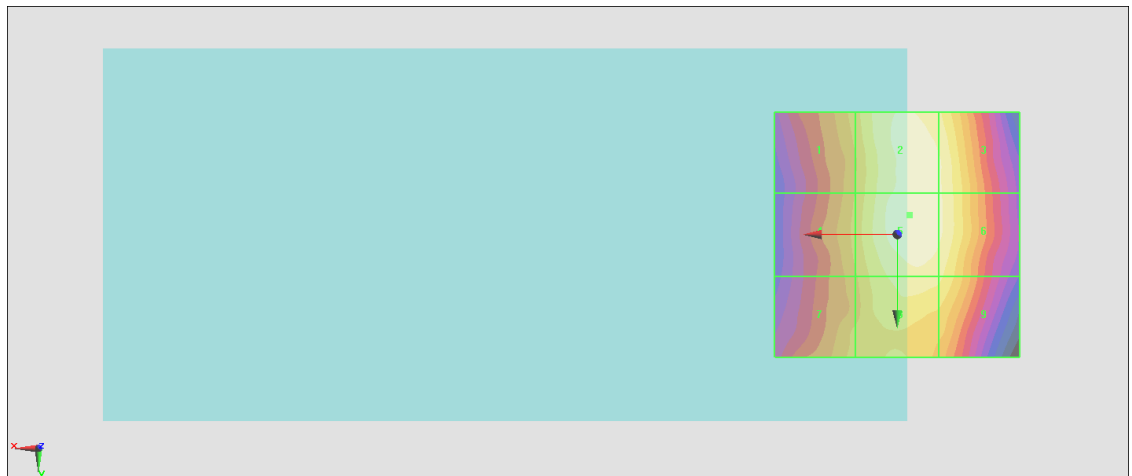
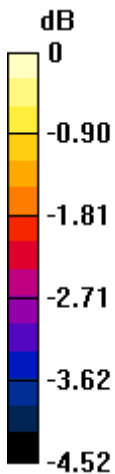
<b>Grid 1 M4</b> <b>28.48 dBV/m</b>	<b>Grid 2 M4</b> <b>29.45 dBV/m</b>	<b>Grid 3 M4</b> <b>29.26 dBV/m</b>
<b>Grid 4 M4</b> <b>28.43 dBV/m</b>	<b>Grid 5 M4</b> <b>29.5 dBV/m</b>	<b>Grid 6 M4</b> <b>29.29 dBV/m</b>
<b>Grid 7 M4</b> <b>28.41 dBV/m</b>	<b>Grid 8 M4</b> <b>29.1 dBV/m</b>	<b>Grid 9 M4</b> <b>28.97 dBV/m</b>

**Cursor:**

Total = 29.50 dBV/m

E Category: M4

Location: -2.5, -4, 8.7 mm



0 dB = 29.87 V/m = 29.50 dBV/m

## #16\_HAC\_E\_LTE Band 41\_20M\_QPSK\_1\_0\_Ch39750

Communication System: LTE-TDD (SC-FDMA, 1 RB, 20 MHz, 16-QAM); Frequency: 2506 MHz; Duty Cycle: 1:8.8736

Medium: Air Medium parameters used:  $\sigma = 0$  S/m,  $\epsilon_r = 1$ ;  $\rho = 0$  kg/m<sup>3</sup>

Ambient Temperature : 23.5 °C

### DASY5 Configuration

- Probe: EF3DV3 - SN4047; ConvF(1, 1, 1) @ 2506 MHz; Calibrated: 2020/1/24
- Sensor-Surface: (Fix Surface)
- Electronics: DAE4 Sn1311; Calibrated: 2020/8/25
- Phantom: HAC Test Arch with AMCC; Type: SD HAC P01 BA;
- Measurement SW: DASY52, Version 52.10 (4); SEMCAD X Version 14.6.14 (7483)

### E Scan - ER3D: 15 mm from Probe Center to the Device/Hearing Aid Compatibility Test (101x101x1): Interpolated grid: dx=0.5000 mm, dy=0.5000 mm

Device Reference Point: 0, 0, -6.3 mm

Reference Value = 13.42 V/m; Power Drift = -0.10 dB

Applied MIF = -1.44 dB

RF audio interference level = 25.16 dBV/m

**Emission category: M4**

MIF scaled E-field

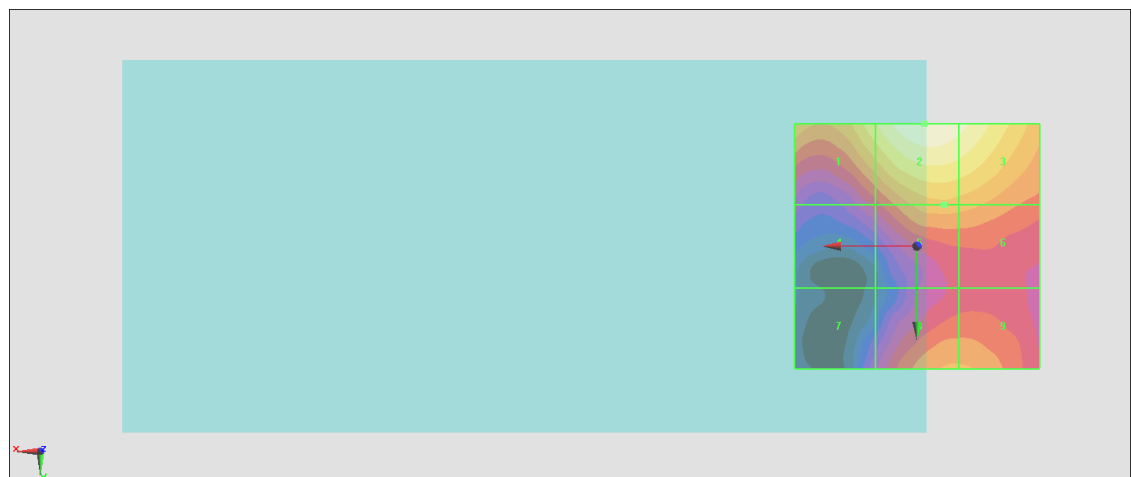
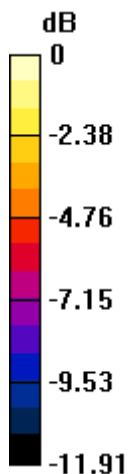
Grid 1 <b>M4</b> <b>23.52 dBV/m</b>	Grid 2 <b>M4</b> <b>25.16 dBV/m</b>	Grid 3 <b>M4</b> <b>24.66 dBV/m</b>
Grid 4 <b>M4</b> <b>19.24 dBV/m</b>	Grid 5 <b>M4</b> <b>21.74 dBV/m</b>	Grid 6 <b>M4</b> <b>21.6 dBV/m</b>
Grid 7 <b>M4</b> <b>17.87 dBV/m</b>	Grid 8 <b>M4</b> <b>21.34 dBV/m</b>	Grid 9 <b>M4</b> <b>21.34 dBV/m</b>

**Cursor:**

Total = 25.16 dBV/m

E Category: M4

Location: -1.5, -25, 8.7 mm



0 dB = 18.11 V/m = 25.16 dBV/m

## #17\_HAC\_E\_LTE Band 41\_20M\_QPSK\_1\_0\_Ch40185

Communication System: LTE-TDD (SC-FDMA, 1 RB, 20 MHz, 16-QAM); Frequency: 2549.5 MHz; Duty Cycle: 1:8.8736

Medium: Air Medium parameters used:  $\sigma = 0$  S/m,  $\epsilon_r = 1$ ;  $\rho = 0$  kg/m<sup>3</sup>

Ambient Temperature : 23.5 °C

### DASY5 Configuration

- Probe: EF3DV3 - SN4047; ConvF(1, 1, 1) @ 2549.5 MHz; Calibrated: 2020/1/24
- Sensor-Surface: (Fix Surface)
- Electronics: DAE4 Sn1311; Calibrated: 2020/8/25
- Phantom: HAC Test Arch with AMCC; Type: SD HAC P01 BA;
- Measurement SW: DASY52, Version 52.10 (4); SEMCAD X Version 14.6.14 (7483)

### E Scan - ER3D: 15 mm from Probe Center to the Device/Hearing Aid Compatibility Test (101x101x1): Interpolated grid: dx=0.5000 mm, dy=0.5000 mm

Device Reference Point: 0, 0, -6.3 mm

Reference Value = 13.95 V/m; Power Drift = -0.13 dB

Applied MIF = -1.44 dB

RF audio interference level = 25.29 dBV/m

**Emission category: M4**

MIF scaled E-field

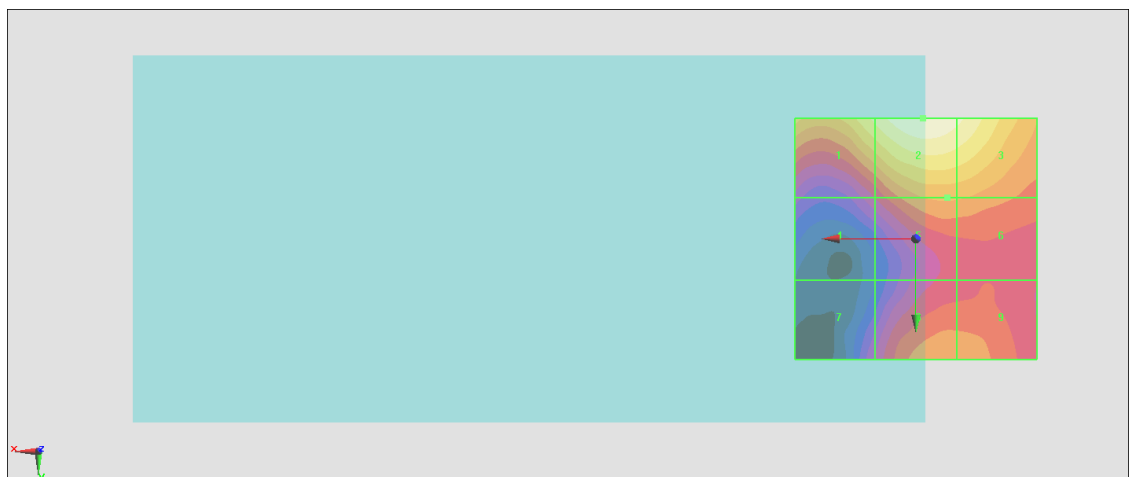
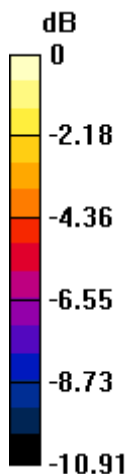
Grid 1 <b>M4</b> <b>24.08 dBV/m</b>	Grid 2 <b>M4</b> <b>25.29 dBV/m</b>	Grid 3 <b>M4</b> <b>24.78 dBV/m</b>
Grid 4 <b>M4</b> <b>19.49 dBV/m</b>	Grid 5 <b>M4</b> <b>21.8 dBV/m</b>	Grid 6 <b>M4</b> <b>21.75 dBV/m</b>
Grid 7 <b>M4</b> <b>18.86 dBV/m</b>	Grid 8 <b>M4</b> <b>21.57 dBV/m</b>	Grid 9 <b>M4</b> <b>21.57 dBV/m</b>

**Cursor:**

Total = 25.29 dBV/m

E Category: M4

Location: -1.5, -25, 8.7 mm



0 dB = 18.38 V/m = 25.29 dBV/m

### #18\_HAC\_E\_LTE Band 41\_20M\_QPSK\_1\_0\_Ch40620

Communication System: LTE-TDD (SC-FDMA, 1 RB, 20 MHz, 16-QAM); Frequency: 2593 MHz; Duty Cycle: 1:8.8736

Medium: Air Medium parameters used:  $\sigma = 0$  S/m,  $\epsilon_r = 1$ ;  $\rho = 0$  kg/m<sup>3</sup>

Ambient Temperature : 23.5 °C

**DASY5 Configuration**

- Probe: EF3DV3 - SN4047; ConvF(1, 1, 1) @ 2593 MHz; Calibrated: 2020/1/24
- Sensor-Surface: (Fix Surface)
- Electronics: DAE4 Sn1311; Calibrated: 2020/8/25
- Phantom: HAC Test Arch with AMCC; Type: SD HAC P01 BA;
- Measurement SW: DASY52, Version 52.10 (4); SEMCAD X Version 14.6.14 (7483)

**E Scan - ER3D: 15 mm from Probe Center to the Device/Hearing Aid Compatibility Test (101x101x1):** Interpolated grid: dx=0.5000 mm, dy=0.5000 mm

Device Reference Point: 0, 0, -6.3 mm

Reference Value = 14.72 V/m; Power Drift = -0.12 dB

Applied MIF = -1.44 dB

RF audio interference level = 25.60 dBV/m

**Emission category: M4**

MIF scaled E-field

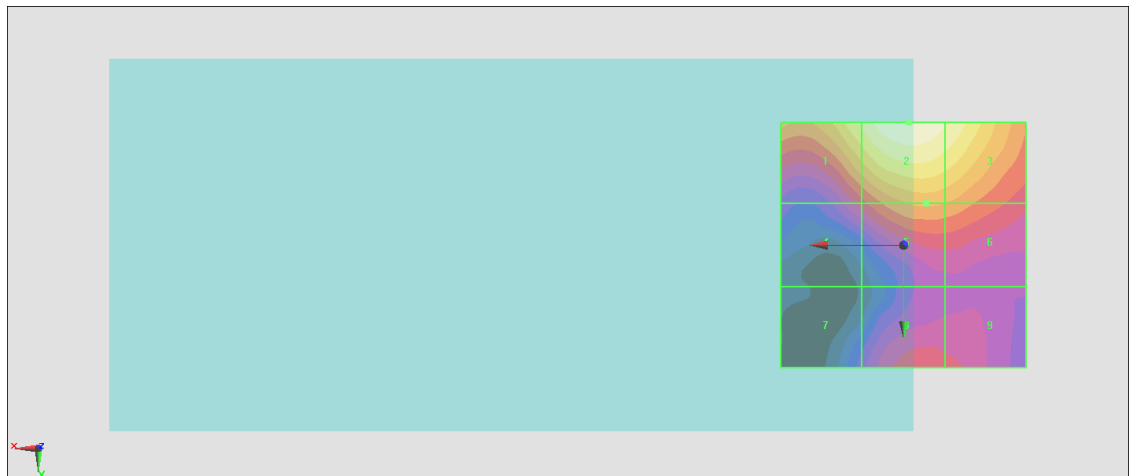
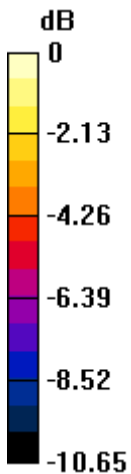
Grid 1 <b>M4</b> <b>24.41 dBV/m</b>	Grid 2 <b>M4</b> <b>25.6 dBV/m</b>	Grid 3 <b>M4</b> <b>24.97 dBV/m</b>
Grid 4 <b>M4</b> <b>20.33 dBV/m</b>	Grid 5 <b>M4</b> <b>22.22 dBV/m</b>	Grid 6 <b>M4</b> <b>22.04 dBV/m</b>
Grid 7 <b>M4</b> <b>18.24 dBV/m</b>	Grid 8 <b>M4</b> <b>20.45 dBV/m</b>	Grid 9 <b>M4</b> <b>20.28 dBV/m</b>

**Cursor:**

Total = 25.60 dBV/m

E Category: M4

Location: -1, -25, 8.7 mm



0 dB = 19.06 V/m = 25.60 dBV/m

### #19\_HAC\_E\_LTE Band 41\_20M\_QPSK\_1\_0\_Ch41055

Communication System: LTE-TDD (SC-FDMA, 1 RB, 20 MHz, 16-QAM); Frequency: 2636.5 MHz; Duty Cycle: 1:8.8736

Medium: Air Medium parameters used:  $\sigma = 0$  S/m,  $\epsilon_r = 1$ ;  $\rho = 0$  kg/m<sup>3</sup>

Ambient Temperature : 23.5 °C

**DASY5 Configuration**

- Probe: EF3DV3 - SN4047; ConvF(1, 1, 1) @ 2636.5 MHz; Calibrated: 2020/1/24
- Sensor-Surface: (Fix Surface)
- Electronics: DAE4 Sn1311; Calibrated: 2020/8/25
- Phantom: HAC Test Arch with AMCC; Type: SD HAC P01 BA;
- Measurement SW: DASY52, Version 52.10 (4); SEMCAD X Version 14.6.14 (7483)

**E Scan - ER3D: 15 mm from Probe Center to the Device/Hearing Aid Compatibility Test (101x101x1):** Interpolated grid: dx=0.5000 mm, dy=0.5000 mm

Device Reference Point: 0, 0, -6.3 mm

Reference Value = 15.18 V/m; Power Drift = -0.05 dB

Applied MIF = -1.44 dB

RF audio interference level = 25.62 dBV/m

**Emission category: M4**

MIF scaled E-field

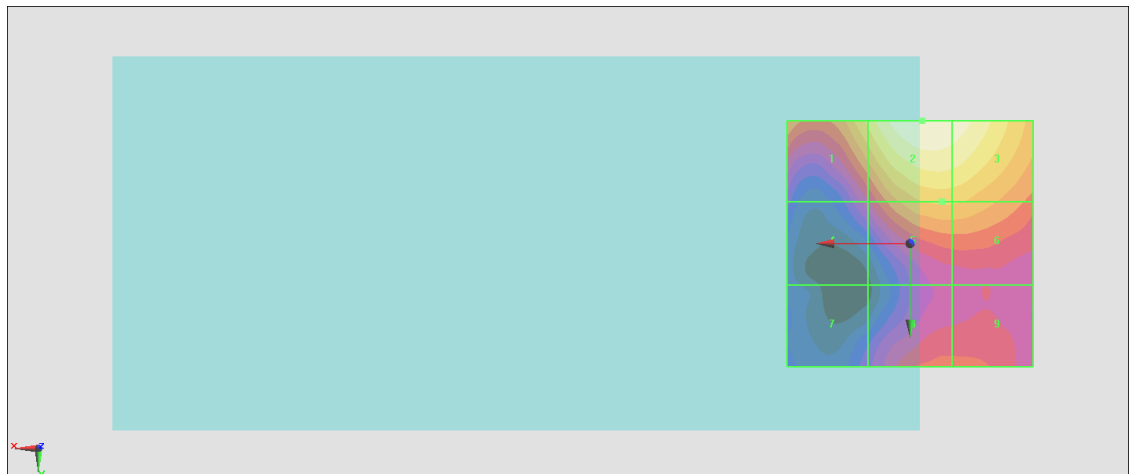
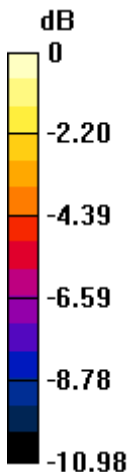
<b>Grid 1 M4</b> <b>23.69 dBV/m</b>	<b>Grid 2 M4</b> <b>25.62 dBV/m</b>	<b>Grid 3 M4</b> <b>25.39 dBV/m</b>
<b>Grid 4 M4</b> <b>19.7 dBV/m</b>	<b>Grid 5 M4</b> <b>22.86 dBV/m</b>	<b>Grid 6 M4</b> <b>22.82 dBV/m</b>
<b>Grid 7 M4</b> <b>18.11 dBV/m</b>	<b>Grid 8 M4</b> <b>20.8 dBV/m</b>	<b>Grid 9 M4</b> <b>20.81 dBV/m</b>

**Cursor:**

Total = 25.62 dBV/m

E Category: M4

Location: -2.5, -25, 8.7 mm



0 dB = 19.10 V/m = 25.62 dBV/m

## #20\_HAC\_E\_LTE Band 41\_20M\_QPSK\_1\_0\_Ch41490

Communication System: LTE-TDD (SC-FDMA, 1 RB, 20 MHz, 16-QAM); Frequency: 2680 MHz; Duty Cycle: 1:8.8736

Medium: Air Medium parameters used:  $\sigma = 0$  S/m,  $\epsilon_r = 1$ ;  $\rho = 0$  kg/m<sup>3</sup>

Ambient Temperature : 23.5 °C

### DASY5 Configuration

- Probe: EF3DV3 - SN4047; ConvF(1, 1, 1) @ 2680 MHz; Calibrated: 2020/1/24
- Sensor-Surface: (Fix Surface)
- Electronics: DAE4 Sn1311; Calibrated: 2020/8/25
- Phantom: HAC Test Arch with AMCC; Type: SD HAC P01 BA;
- Measurement SW: DASY52, Version 52.10 (4); SEMCAD X Version 14.6.14 (7483)

### E Scan - ER3D: 15 mm from Probe Center to the Device/Hearing Aid Compatibility Test (101x101x1): Interpolated grid: dx=0.5000 mm, dy=0.5000 mm

Device Reference Point: 0, 0, -6.3 mm

Reference Value = 17.86 V/m; Power Drift = 0.00 dB

Applied MIF = -1.44 dB

RF audio interference level = 26.28 dBV/m

**Emission category: M4**

MIF scaled E-field

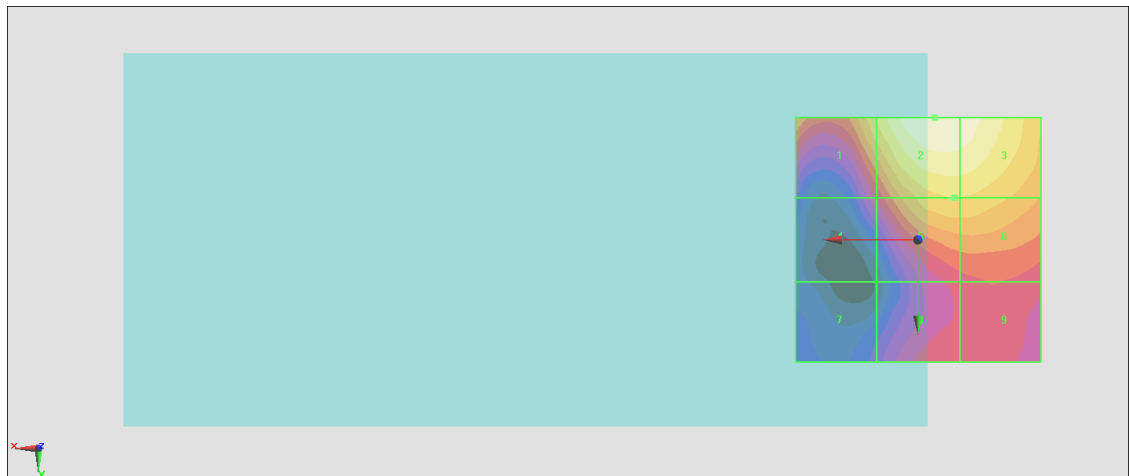
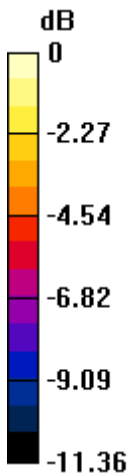
<b>Grid 1 M4</b> <b>24.06 dBV/m</b>	<b>Grid 2 M4</b> <b>26.28 dBV/m</b>	<b>Grid 3 M4</b> <b>26.05 dBV/m</b>
<b>Grid 4 M4</b> <b>20.27 dBV/m</b>	<b>Grid 5 M4</b> <b>24 dBV/m</b>	<b>Grid 6 M4</b> <b>23.98 dBV/m</b>
<b>Grid 7 M4</b> <b>18.3 dBV/m</b>	<b>Grid 8 M4</b> <b>20.9 dBV/m</b>	<b>Grid 9 M4</b> <b>21.03 dBV/m</b>

**Cursor:**

Total = 26.28 dBV/m

E Category: M4

Location: -3.5, -25, 8.7 mm



0 dB = 20.60 V/m = 26.28 dBV/m

## #21\_HAC\_E\_LTE Band 41\_HPUE\_20M\_QPSK\_1\_0\_Ch39750

Communication System: LTE-TDD (SC-FDMA, 1 RB, 20 MHz, 16-QAM); Frequency: 2506 MHz; Duty Cycle: 1:8.8736

Medium: Air Medium parameters used:  $\sigma = 0$  S/m,  $\epsilon_r = 1$ ;  $\rho = 0$  kg/m<sup>3</sup>

Ambient Temperature : 23.5 °C

### DASY5 Configuration

- Probe: EF3DV3 - SN4047; ConvF(1, 1, 1) @ 2506 MHz; Calibrated: 2020/1/24
- Sensor-Surface: (Fix Surface)
- Electronics: DAE4 Sn1311; Calibrated: 2020/8/25
- Phantom: HAC Test Arch with AMCC; Type: SD HAC P01 BA;
- Measurement SW: DASY52, Version 52.10 (4); SEMCAD X Version 14.6.14 (7483)

### E Scan - ER3D: 15 mm from Probe Center to the Device/Hearing Aid Compatibility Test (101x101x1): Interpolated grid: dx=0.5000 mm, dy=0.5000 mm

Device Reference Point: 0, 0, -6.3 mm

Reference Value = 11.57 V/m; Power Drift = 0.13 dB

Applied MIF = -1.44 dB

RF audio interference level = 24.05 dBV/m

**Emission category: M4**

MIF scaled E-field

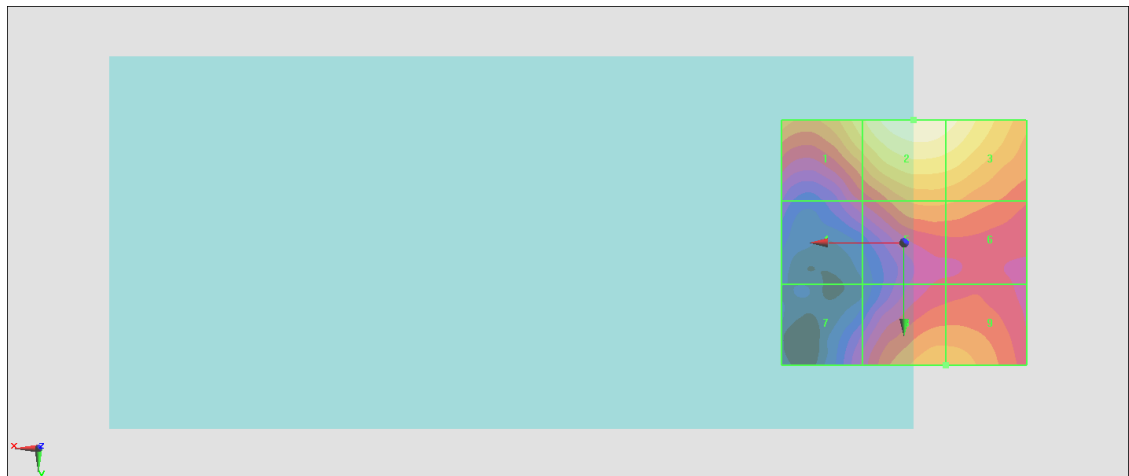
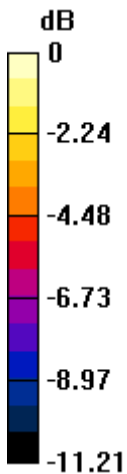
Grid 1 <b>M4</b> <b>22.41 dBV/m</b>	Grid 2 <b>M4</b> <b>24.05 dBV/m</b>	Grid 3 <b>M4</b> <b>23.66 dBV/m</b>
Grid 4 <b>M4</b> <b>18.22 dBV/m</b>	Grid 5 <b>M4</b> <b>20.54 dBV/m</b>	Grid 6 <b>M4</b> <b>20.46 dBV/m</b>
Grid 7 <b>M4</b> <b>17.62 dBV/m</b>	Grid 8 <b>M4</b> <b>20.98 dBV/m</b>	Grid 9 <b>M4</b> <b>20.98 dBV/m</b>

**Cursor:**

Total = 24.05 dBV/m

E Category: M4

Location: -2, -25, 8.7 mm



0 dB = 15.94 V/m = 24.05 dBV/m

## #22\_HAC\_E\_LTE Band 41\_HPUE\_20M\_QPSK\_1\_0\_Ch40185

Communication System: LTE-TDD (SC-FDMA, 1 RB, 20 MHz, 16-QAM); Frequency: 2549.5 MHz; Duty Cycle: 1:8.8736

Medium: Air Medium parameters used:  $\sigma = 0$  S/m,  $\epsilon_r = 1$ ;  $\rho = 0$  kg/m<sup>3</sup>

Ambient Temperature : 23.5 °C

### DASY5 Configuration

- Probe: EF3DV3 - SN4047; ConvF(1, 1, 1) @ 2549.5 MHz; Calibrated: 2020/1/24
- Sensor-Surface: (Fix Surface)
- Electronics: DAE4 Sn1311; Calibrated: 2020/8/25
- Phantom: HAC Test Arch with AMCC; Type: SD HAC P01 BA;
- Measurement SW: DASY52, Version 52.10 (4); SEMCAD X Version 14.6.14 (7483)

### E Scan - ER3D: 15 mm from Probe Center to the Device/Hearing Aid Compatibility Test (101x101x1): Interpolated grid: dx=0.5000 mm, dy=0.5000 mm

Device Reference Point: 0, 0, -6.3 mm

Reference Value = 12.50 V/m; Power Drift = 0.04 dB

Applied MIF = -1.44 dB

RF audio interference level = 24.43 dBV/m

**Emission category: M4**

MIF scaled E-field

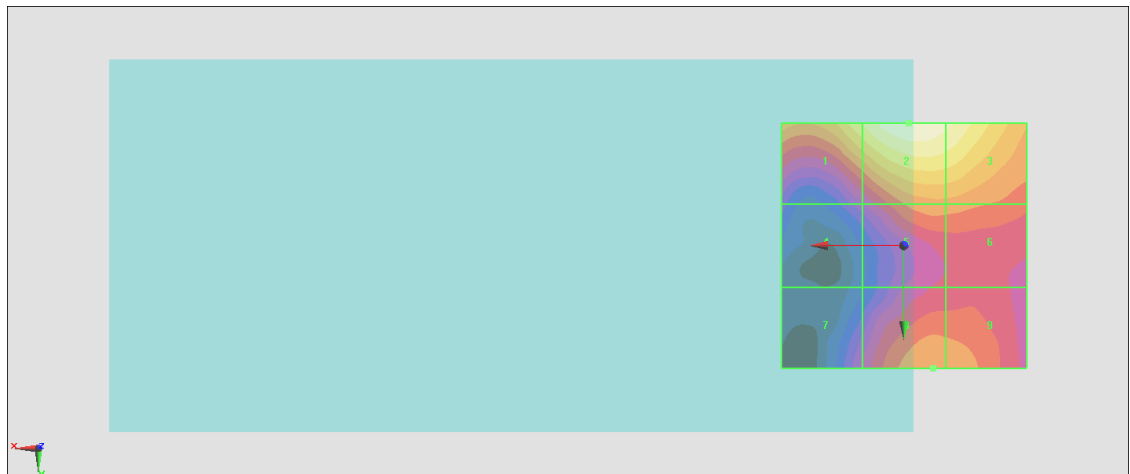
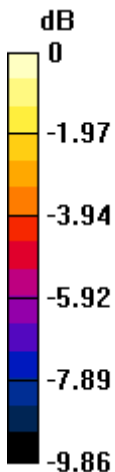
Grid 1 <b>M4</b> <b>23.16 dBV/m</b>	Grid 2 <b>M4</b> <b>24.43 dBV/m</b>	Grid 3 <b>M4</b> <b>23.94 dBV/m</b>
Grid 4 <b>M4</b> <b>18.46 dBV/m</b>	Grid 5 <b>M4</b> <b>20.96 dBV/m</b>	Grid 6 <b>M4</b> <b>20.94 dBV/m</b>
Grid 7 <b>M4</b> <b>18.61 dBV/m</b>	Grid 8 <b>M4</b> <b>21.16 dBV/m</b>	Grid 9 <b>M4</b> <b>21.09 dBV/m</b>

**Cursor:**

Total = 24.43 dBV/m

E Category: M4

Location: -1, -25, 8.7 mm



0 dB = 16.65 V/m = 24.43 dBV/m

## #23\_HAC\_E\_LTE Band 41\_HPUE\_20M\_QPSK\_1\_0\_Ch40620

Communication System: LTE-TDD (SC-FDMA, 1 RB, 20 MHz, 16-QAM); Frequency: 2593 MHz; Duty Cycle: 1:8.8736

Medium: Air Medium parameters used:  $\sigma = 0$  S/m,  $\epsilon_r = 1$ ;  $\rho = 0$  kg/m<sup>3</sup>

Ambient Temperature : 23.5 °C

### DASY5 Configuration

- Probe: EF3DV3 - SN4047; ConvF(1, 1, 1) @ 2593 MHz; Calibrated: 2020/1/24
- Sensor-Surface: (Fix Surface)
- Electronics: DAE4 Sn1311; Calibrated: 2020/8/25
- Phantom: HAC Test Arch with AMCC; Type: SD HAC P01 BA;
- Measurement SW: DASY52, Version 52.10 (4); SEMCAD X Version 14.6.14 (7483)

### E Scan - ER3D: 15 mm from Probe Center to the Device/Hearing Aid Compatibility Test (101x101x1): Interpolated grid: dx=0.5000 mm, dy=0.5000 mm

Device Reference Point: 0, 0, -6.3 mm

Reference Value = 12.65 V/m; Power Drift = 0.07 dB

Applied MIF = -1.44 dB

RF audio interference level = 24.71 dBV/m

**Emission category: M4**

MIF scaled E-field

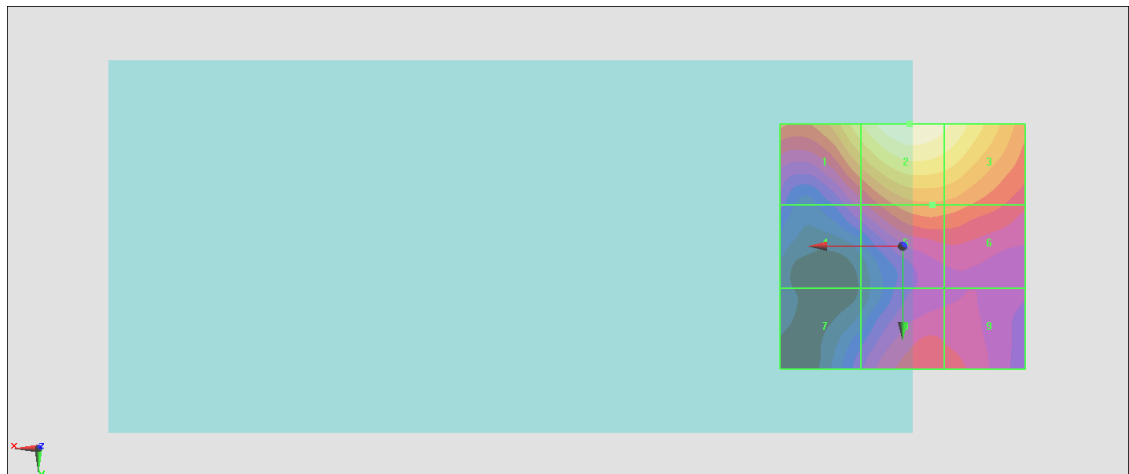
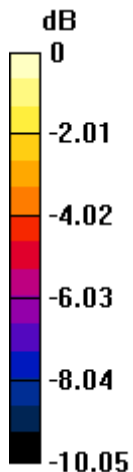
Grid 1 <b>M4</b> <b>23.34 dBV/m</b>	Grid 2 <b>M4</b> <b>24.71 dBV/m</b>	Grid 3 <b>M4</b> <b>24.23 dBV/m</b>
Grid 4 <b>M4</b> <b>19.04 dBV/m</b>	Grid 5 <b>M4</b> <b>21.27 dBV/m</b>	Grid 6 <b>M4</b> <b>21.2 dBV/m</b>
Grid 7 <b>M4</b> <b>17.91 dBV/m</b>	Grid 8 <b>M4</b> <b>19.95 dBV/m</b>	Grid 9 <b>M4</b> <b>19.87 dBV/m</b>

**Cursor:**

Total = 24.71 dBV/m

E Category: M4

Location: -1.5, -25, 8.7 mm



0 dB = 17.21 V/m = 24.72 dBV/m

## #24\_HAC\_E\_LTE Band 41\_HPUE\_20M\_QPSK\_1\_0\_Ch41055

Communication System: LTE-TDD (SC-FDMA, 1 RB, 20 MHz, 16-QAM); Frequency: 2636.5 MHz; Duty Cycle: 1:8.8736

Medium: Air Medium parameters used:  $\sigma = 0$  S/m,  $\epsilon_r = 1$ ;  $\rho = 0$  kg/m<sup>3</sup>

Ambient Temperature : 23.5 °C

### DASY5 Configuration

- Probe: EF3DV3 - SN4047; ConvF(1, 1, 1) @ 2636.5 MHz; Calibrated: 2020/1/24
- Sensor-Surface: (Fix Surface)
- Electronics: DAE4 Sn1311; Calibrated: 2020/8/25
- Phantom: HAC Test Arch with AMCC; Type: SD HAC P01 BA;
- Measurement SW: DASY52, Version 52.10 (4); SEMCAD X Version 14.6.14 (7483)

### E Scan - ER3D: 15 mm from Probe Center to the Device/Hearing Aid Compatibility Test (101x101x1): Interpolated grid: dx=0.5000 mm, dy=0.5000 mm

Device Reference Point: 0, 0, -6.3 mm

Reference Value = 11.59 V/m; Power Drift = 0.03 dB

Applied MIF = -1.44 dB

RF audio interference level = 23.74 dBV/m

**Emission category: M4**

MIF scaled E-field

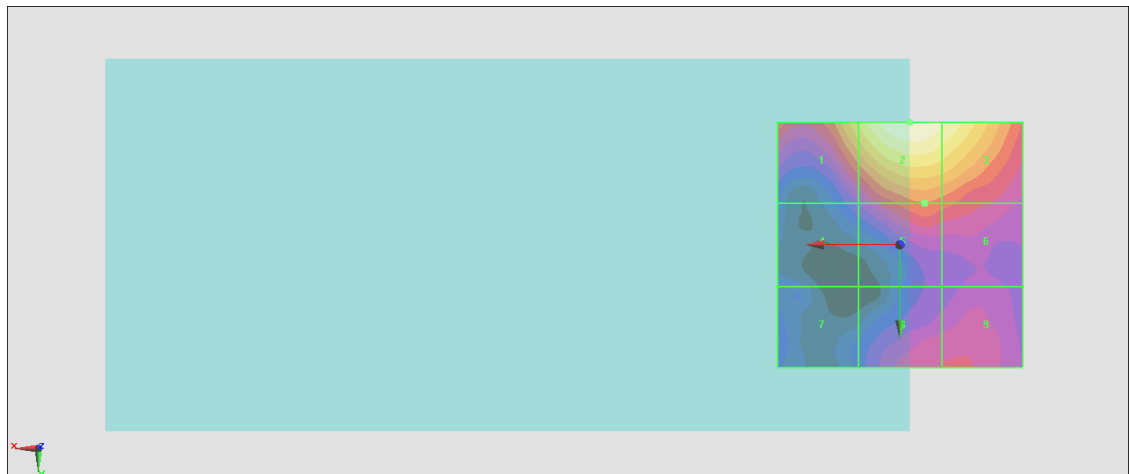
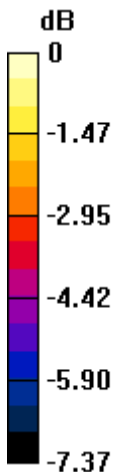
Grid 1 <b>M4</b> <b>22.33 dBV/m</b>	Grid 2 <b>M4</b> <b>23.74 dBV/m</b>	Grid 3 <b>M4</b> <b>23.39 dBV/m</b>
Grid 4 <b>M4</b> <b>18.9 dBV/m</b>	Grid 5 <b>M4</b> <b>20.75 dBV/m</b>	Grid 6 <b>M4</b> <b>20.57 dBV/m</b>
Grid 7 <b>M4</b> <b>18.46 dBV/m</b>	Grid 8 <b>M4</b> <b>19.84 dBV/m</b>	Grid 9 <b>M4</b> <b>19.88 dBV/m</b>

**Cursor:**

Total = 23.74 dBV/m

E Category: M4

Location: -2, -25, 8.7 mm



0 dB = 15.38 V/m = 23.74 dBV/m

## #25\_HAC\_E\_LTE Band 41\_HPUE\_20M\_QPSK\_1\_0\_Ch41490

Communication System: LTE-TDD (SC-FDMA, 1 RB, 20 MHz, 16-QAM); Frequency: 2680 MHz; Duty Cycle: 1:8.8736

Medium: Air Medium parameters used:  $\sigma = 0$  S/m,  $\epsilon_r = 1$ ;  $\rho = 0$  kg/m<sup>3</sup>

Ambient Temperature : 23.5 °C

### DASY5 Configuration

- Probe: EF3DV3 - SN4047; ConvF(1, 1, 1) @ 2680 MHz; Calibrated: 2020/1/24
- Sensor-Surface: (Fix Surface)
- Electronics: DAE4 Sn1311; Calibrated: 2020/8/25
- Phantom: HAC Test Arch with AMCC; Type: SD HAC P01 BA;
- Measurement SW: DASY52, Version 52.10 (4); SEMCAD X Version 14.6.14 (7483)

### E Scan - ER3D: 15 mm from Probe Center to the Device/Hearing Aid Compatibility Test (101x101x1): Interpolated grid: dx=0.5000 mm, dy=0.5000 mm

Device Reference Point: 0, 0, -6.3 mm

Reference Value = 16.33 V/m; Power Drift = -0.08 dB

Applied MIF = -1.44 dB

RF audio interference level = 25.43 dBV/m

**Emission category: M4**

MIF scaled E-field

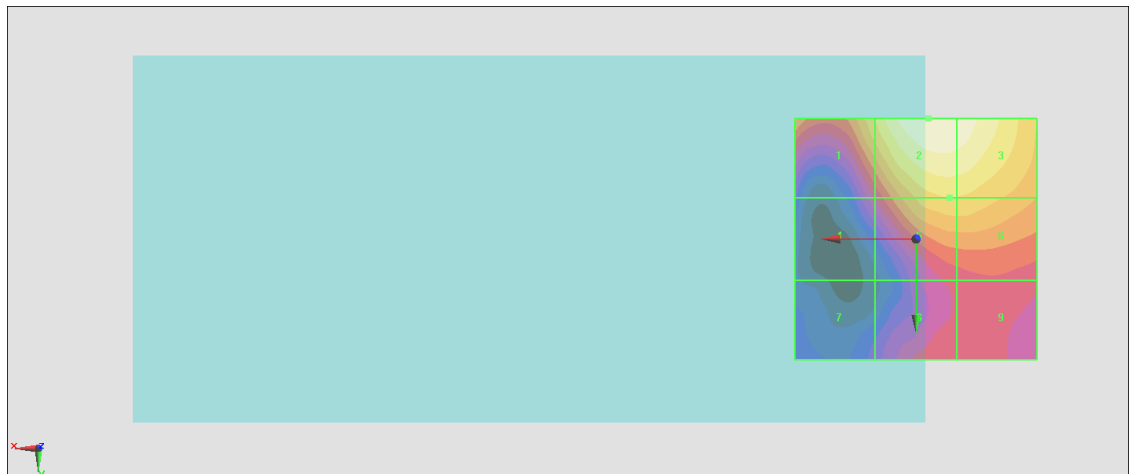
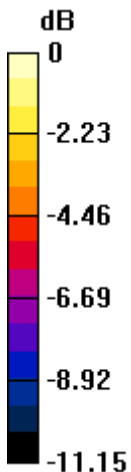
Grid 1 <b>M4</b> <b>23.23 dBV/m</b>	Grid 2 <b>M4</b> <b>25.43 dBV/m</b>	Grid 3 <b>M4</b> <b>25.19 dBV/m</b>
Grid 4 <b>M4</b> <b>19.52 dBV/m</b>	Grid 5 <b>M4</b> <b>23.19 dBV/m</b>	Grid 6 <b>M4</b> <b>23.15 dBV/m</b>
Grid 7 <b>M4</b> <b>17.59 dBV/m</b>	Grid 8 <b>M4</b> <b>20.17 dBV/m</b>	Grid 9 <b>M4</b> <b>20.19 dBV/m</b>

**Cursor:**

Total = 25.43 dBV/m

E Category: M4

Location: -2.5, -25, 8.7 mm



0 dB = 18.68 V/m = 25.43 dBV/m

## #26\_HAC\_E\_WLAN2.4GHz\_802.11g\_6Mbps\_Ch1

Communication System: IEEE 802.11g WiFi 2.4 GHz (DSSS/OFDM, 54 Mbps); Frequency: 2412 MHz; Duty Cycle: 1:12.5777

Medium: Air Medium parameters used:  $\sigma = 0$  S/m,  $\epsilon_r = 1$ ;  $\rho = 0$  kg/m<sup>3</sup>

Ambient Temperature : 23.5 °C

### DASY5 Configuration

- Probe: EF3DV3 - SN4047; ConvF(1, 1, 1) @ 2412 MHz; Calibrated: 2020/1/24
- Sensor-Surface: (Fix Surface)
- Electronics: DAE4 Sn1311; Calibrated: 2020/8/25
- Phantom: HAC Test Arch with AMCC; Type: SD HAC P01 BA;
- Measurement SW: DASY52, Version 52.10 (4); SEMCAD X Version 14.6.14 (7483)

### E Scan - ER3D: 15 mm from Probe Center to the Device/Hearing Aid Compatibility Test (101x101x1): Interpolated grid: dx=0.5000 mm, dy=0.5000 mm

Device Reference Point: 0, 0, -6.3 mm

Reference Value = 39.21 V/m; Power Drift = -0.05 dB

Applied MIF = 0.12 dB

RF audio interference level = 30.54 dBV/m

**Emission category: M3**

MIF scaled E-field

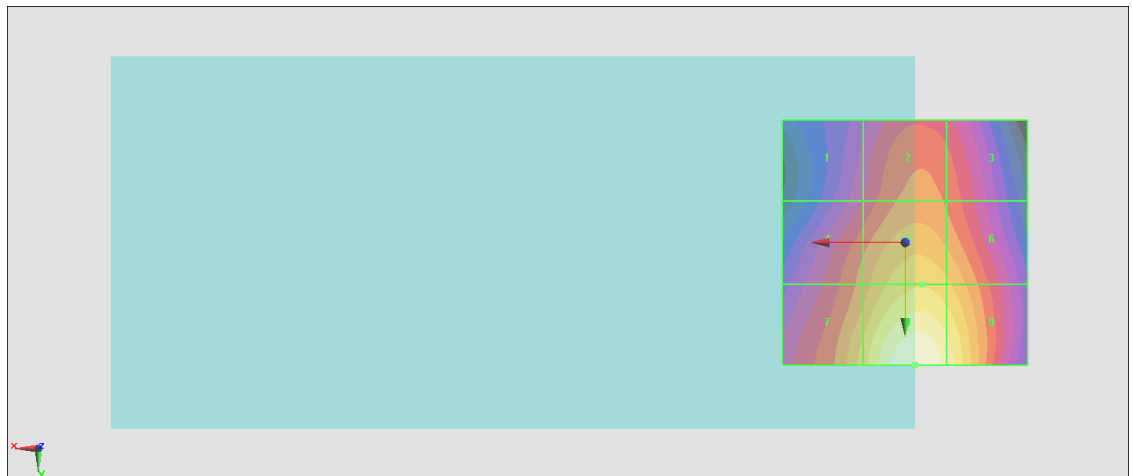
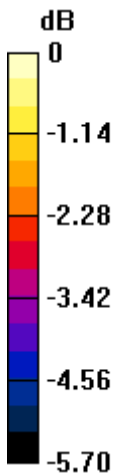
Grid 1 <b>M4</b> <b>27.55 dBV/m</b>	Grid 2 <b>M4</b> <b>28.44 dBV/m</b>	Grid 3 <b>M4</b> <b>28.21 dBV/m</b>
Grid 4 <b>M4</b> <b>28.47 dBV/m</b>	Grid 5 <b>M4</b> <b>29.37 dBV/m</b>	Grid 6 <b>M4</b> <b>29.11 dBV/m</b>
Grid 7 <b>M4</b> <b>29.25 dBV/m</b>	Grid 8 <b>M3</b> <b>30.54 dBV/m</b>	Grid 9 <b>M3</b> <b>30.02 dBV/m</b>

**Cursor:**

Total = 30.54 dBV/m

E Category: M3

Location: -2, 25, 8.7 mm



0 dB = 33.64 V/m = 30.54 dBV/m

## #27\_HAC\_E\_WLAN2.4GHz\_802.11g\_6Mbps\_Ch6

Communication System: IEEE 802.11g WiFi 2.4 GHz (DSSS/OFDM, 54 Mbps); Frequency: 2437 MHz; Duty Cycle: 1:12.5777

Medium: Air Medium parameters used:  $\sigma = 0$  S/m,  $\epsilon_r = 1$ ;  $\rho = 0$  kg/m<sup>3</sup>

Ambient Temperature : 23.5 °C

### DASY5 Configuration

- Probe: EF3DV3 - SN4047; ConvF(1, 1, 1) @ 2437 MHz; Calibrated: 2020/1/24
- Sensor-Surface: (Fix Surface)
- Electronics: DAE4 Sn1311; Calibrated: 2020/8/25
- Phantom: HAC Test Arch with AMCC; Type: SD HAC P01 BA;
- Measurement SW: DASY52, Version 52.10 (4); SEMCAD X Version 14.6.14 (7483)

### E Scan - ER3D: 15 mm from Probe Center to the Device/Hearing Aid Compatibility Test (101x101x1): Interpolated grid: dx=0.5000 mm, dy=0.5000 mm

Device Reference Point: 0, 0, -6.3 mm

Reference Value = 37.36 V/m; Power Drift = 0.01 dB

Applied MIF = 0.12 dB

RF audio interference level = 30.50 dBV/m

**Emission category: M3**

MIF scaled E-field

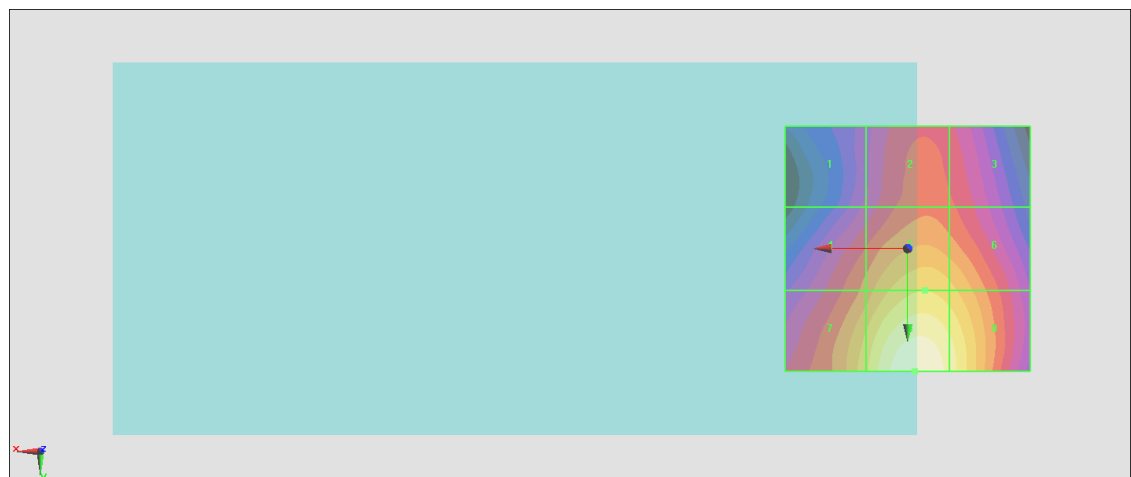
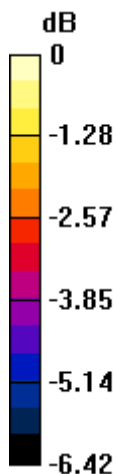
Grid 1 <b>M4</b> <b>26.81 dBV/m</b>	Grid 2 <b>M4</b> <b>27.85 dBV/m</b>	Grid 3 <b>M4</b> <b>27.63 dBV/m</b>
Grid 4 <b>M4</b> <b>28.14 dBV/m</b>	Grid 5 <b>M4</b> <b>29.22 dBV/m</b>	Grid 6 <b>M4</b> <b>28.96 dBV/m</b>
Grid 7 <b>M4</b> <b>29.13 dBV/m</b>	Grid 8 <b>M3</b> <b>30.5 dBV/m</b>	Grid 9 <b>M4</b> <b>29.92 dBV/m</b>

**Cursor:**

Total = 30.50 dBV/m

E Category: M3

Location: -1.5, 25, 8.7 mm



0 dB = 33.51 V/m = 30.50 dBV/m

## #28\_HAC\_E\_WLAN2.4GHz\_802.11g\_6Mbps\_Ch11

Communication System: IEEE 802.11g WiFi 2.4 GHz (DSSS/OFDM, 54 Mbps); Frequency: 2462 MHz; Duty Cycle: 1:12.5777

Medium: Air Medium parameters used:  $\sigma = 0$  S/m,  $\epsilon_r = 1$ ;  $\rho = 0$  kg/m<sup>3</sup>

Ambient Temperature : 23.5 °C

### DASY5 Configuration

- Probe: EF3DV3 - SN4047; ConvF(1, 1, 1) @ 2462 MHz; Calibrated: 2020/1/24
- Sensor-Surface: (Fix Surface)
- Electronics: DAE4 Sn1311; Calibrated: 2020/8/25
- Phantom: HAC Test Arch with AMCC; Type: SD HAC P01 BA;
- Measurement SW: DASY52, Version 52.10 (4); SEMCAD X Version 14.6.14 (7483)

### E Scan - ER3D: 15 mm from Probe Center to the Device/Hearing Aid Compatibility Test (101x101x1): Interpolated grid: dx=0.5000 mm, dy=0.5000 mm

Device Reference Point: 0, 0, -6.3 mm

Reference Value = 35.81 V/m; Power Drift = -0.02 dB

Applied MIF = 0.12 dB

RF audio interference level = 30.20 dBV/m

**Emission category: M3**

MIF scaled E-field

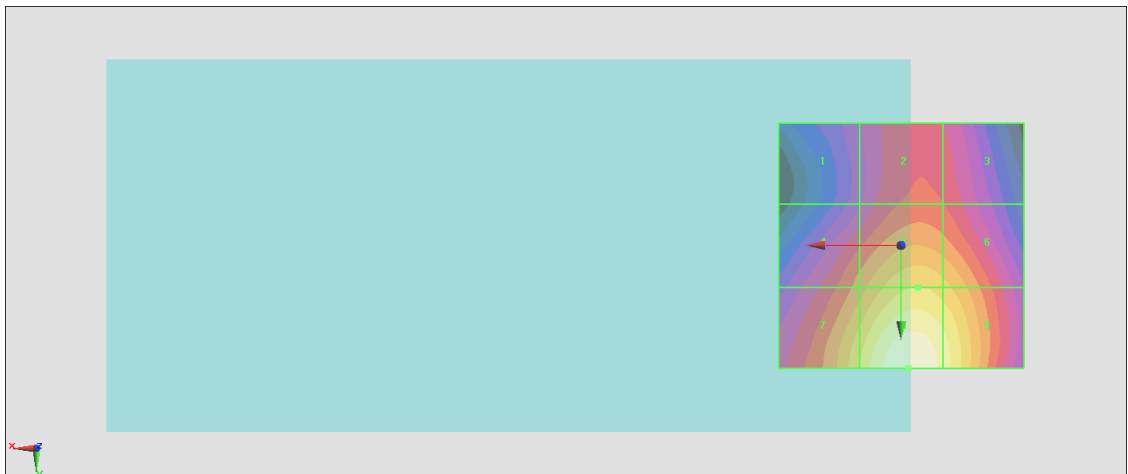
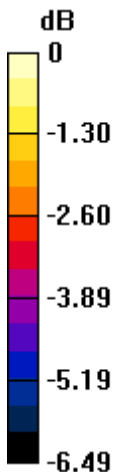
Grid 1 <b>M4</b> <b>26.27 dBV/m</b>	Grid 2 <b>M4</b> <b>27.36 dBV/m</b>	Grid 3 <b>M4</b> <b>27.2 dBV/m</b>
Grid 4 <b>M4</b> <b>27.83 dBV/m</b>	Grid 5 <b>M4</b> <b>28.92 dBV/m</b>	Grid 6 <b>M4</b> <b>28.66 dBV/m</b>
Grid 7 <b>M4</b> <b>28.91 dBV/m</b>	Grid 8 <b>M3</b> <b>30.2 dBV/m</b>	Grid 9 <b>M4</b> <b>29.63 dBV/m</b>

**Cursor:**

Total = 30.20 dBV/m

E Category: M3

Location: -1.5, 25, 8.7 mm



0 dB = 32.36 V/m = 30.20 dBV/m