

System Check_Head_5600MHz

DUT: D5GHzV2-SN:1167

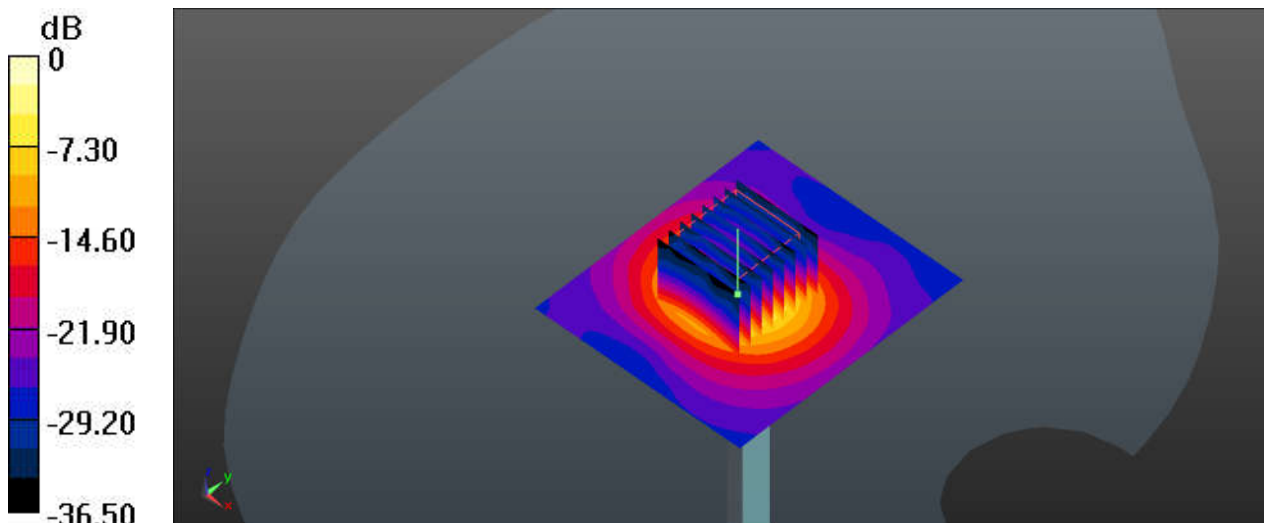
Communication System: UID 0, CW (0); Frequency: 5600 MHz; Duty Cycle: 1:1
Medium: HSL_5600_200916 Medium parameters used: $f = 5600$ MHz; $\sigma = 5.211$ S/m; $\epsilon_r = 36.228$;
 $\rho = 1000$ kg/m³
Ambient Temperature : 23.8 °C ; Liquid Temperature : 22.7 °C

DASY5 Configuration:

- Probe: EX3DV4 - SN7576; ConvF(4.62, 4.62, 4.62); Calibrated: 2020.01.22
- Sensor-Surface: 1.4mm (Mechanical Surface Detection)
- Electronics: DAE3 Sn528; Calibrated: 2020.03.16
- Phantom: SAM (Front) with CRP v5.0; Type: QD000P40CD; Serial: TP:1795
- Measurement SW: DASY52, Version 52.8 (8); SEMCAD X Version 14.6.10 (7331)

Pin=100mW/Area Scan (71x81x1): Interpolated grid: dx=1.000 mm, dy=1.000 mm
Maximum value of SAR (interpolated) = 22.4 W/kg

Pin=100mW/Zoom Scan (8x8x7)/Cube 0: Measurement grid: dx=4mm, dy=4mm, dz=1.4mm
Reference Value = 54.39 V/m; Power Drift = 0.11 dB
Peak SAR (extrapolated) = 37.2 W/kg
SAR(1 g) = 8.48 W/kg; SAR(10 g) = 2.4 W/kg
Maximum value of SAR (measured) = 22.1 W/kg



0 dB = 22.1 W/kg

System Check_Head_5750MHz

DUT: D5GHzV2-SN:1167

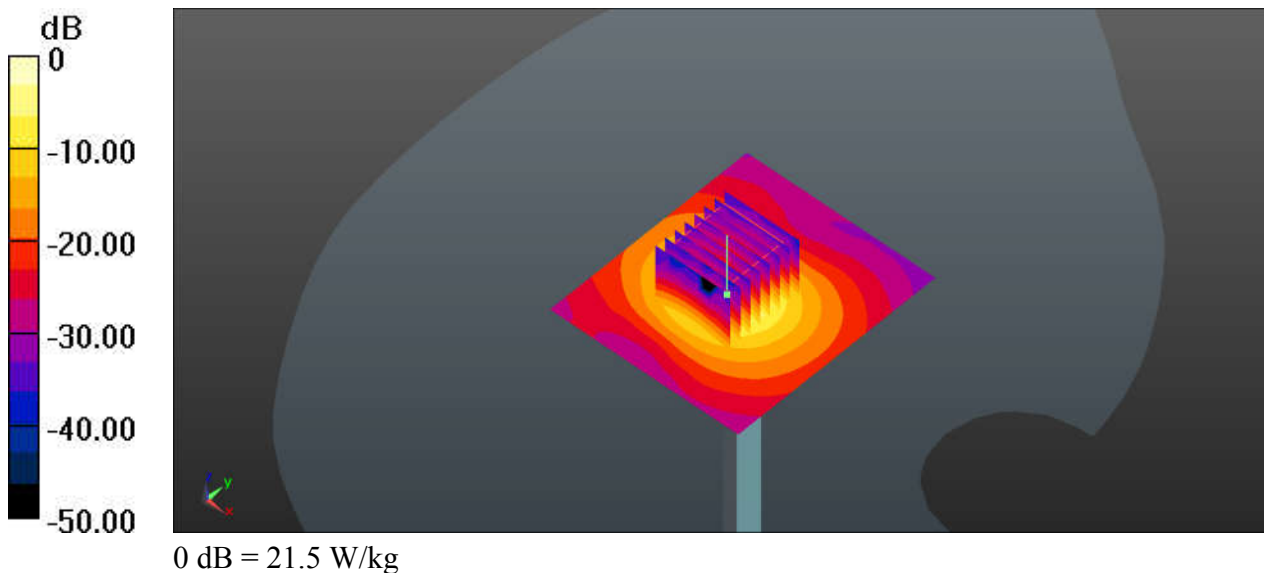
Communication System: UID 0, CW (0); Frequency: 5750 MHz; Duty Cycle: 1:1
Medium: HSL_5750_200828 Medium parameters used: $f = 5750$ MHz; $\sigma = 5.364$ S/m; $\epsilon_r = 35.845$;
 $\rho = 1000$ kg/m³
Ambient Temperature : 23.6 °C ; Liquid Temperature : 22.8 °C

DASY5 Configuration:

- Probe: EX3DV4 - SN7576; ConvF(4.83, 4.83, 4.83); Calibrated: 2020.01.22
- Sensor-Surface: 1.4mm (Mechanical Surface Detection)
- Electronics: DAE3 Sn528; Calibrated: 2020.03.16
- Phantom: SAM (Front) with CRP v5.0; Type: QD000P40CD; Serial: TP:1795
- Measurement SW: DASY52, Version 52.8 (8); SEMCAD X Version 14.6.10 (7331)

Pin=100mW/Area Scan (71x81x1): Interpolated grid: dx=1.000 mm, dy=1.000 mm
Maximum value of SAR (interpolated) = 22.7 W/kg

Pin=100mW/Zoom Scan (8x8x7)/Cube 0: Measurement grid: dx=4mm, dy=4mm, dz=1.4mm
Reference Value = 50.60 V/m; Power Drift = 0.05 dB
Peak SAR (extrapolated) = 37.3 W/kg
SAR(1 g) = 8.33 W/kg; SAR(10 g) = 2.36 W/kg
Maximum value of SAR (measured) = 21.5 W/kg



System Check_Head_5750MHz

DUT: D5GHzV2-SN:1167

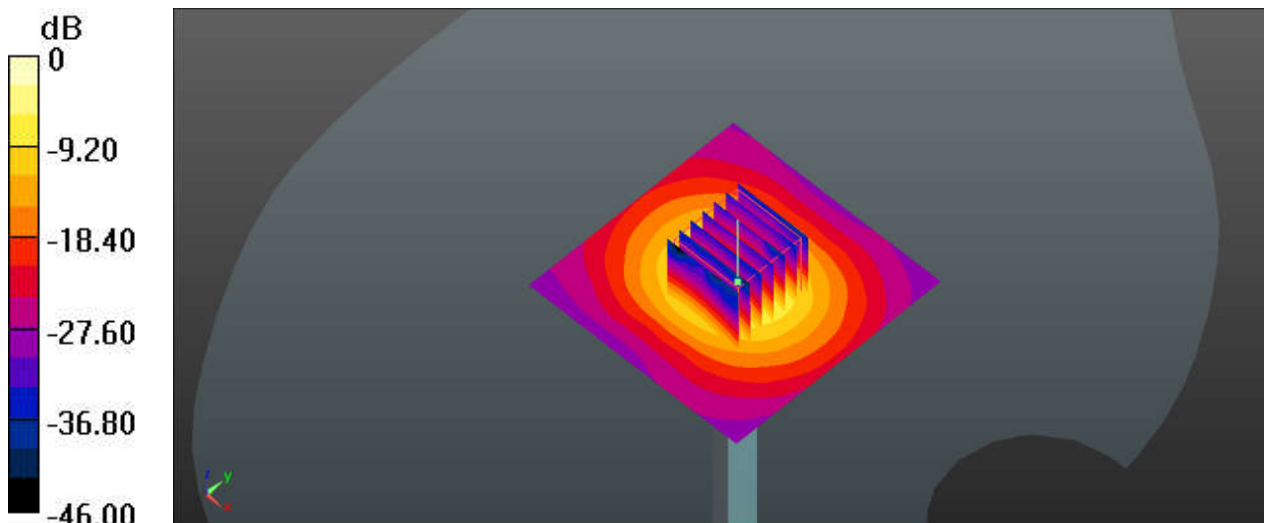
Communication System: UID 0, CW (0); Frequency: 5750 MHz; Duty Cycle: 1:1
Medium: HSL_5750_200912 Medium parameters used: $f = 5750$ MHz; $\sigma = 5.049$ S/m; $\epsilon_r = 36.943$;
 $\rho = 1000$ kg/m³
Ambient Temperature : 23.6 °C ; Liquid Temperature : 22.4 °C

DASY5 Configuration:

- Probe: EX3DV4 - SN7576; ConvF(4.83, 4.83, 4.83); Calibrated: 2020.01.22
- Sensor-Surface: 1.4mm (Mechanical Surface Detection)
- Electronics: DAE3 Sn528; Calibrated: 2020.03.16
- Phantom: SAM (Front) with CRP v5.0; Type: QD000P40CD; Serial: TP:1795
- Measurement SW: DASY52, Version 52.8 (8); SEMCAD X Version 14.6.10 (7331)

Pin=100mW/Area Scan (71x71x1): Interpolated grid: dx=1.000 mm, dy=1.000 mm
Maximum value of SAR (interpolated) = 19.0 W/kg

Pin=100mW/Zoom Scan (7x7x7)/Cube 0: Measurement grid: dx=4mm, dy=4mm, dz=1.4mm
Reference Value = 54.45 V/m; Power Drift = 0.03 dB
Peak SAR (extrapolated) = 33.5 W/kg
SAR(1 g) = 7.69 W/kg; SAR(10 g) = 2.11 W/kg
Maximum value of SAR (measured) = 19.6 W/kg



0 dB = 19.6 W/kg



Appendix B. Plots of High SAR Measurement

The plots are shown as follows.

01_GSM850_GPRS(2 Tx slots)_Right Cheek_Ch189

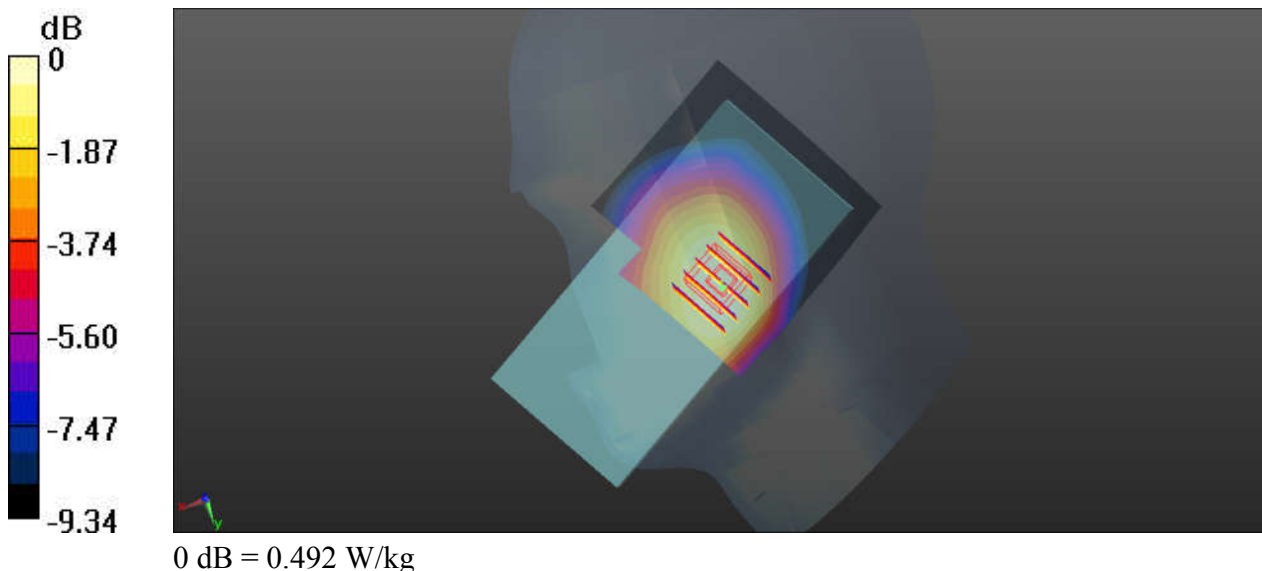
Communication System: UID 0, GPRS/EDGE10 (0); Frequency: 836.4 MHz; Duty Cycle: 1:4.15
Medium: HSL_835_200822 Medium parameters used: $f = 836.4$ MHz; $\sigma = 0.912$ S/m; $\epsilon_r = 42.893$;
 $\rho = 1000$ kg/m³
Ambient Temperature : 23.5 °C; Liquid Temperature : 22.6 °C

DASY5 Configuration:

- Probe: EX3DV4 - SN7576; ConvF(10.45, 10.45, 10.45); Calibrated: 2020.01.22;
- Sensor-Surface: 2mm (Mechanical Surface Detection)
- Electronics: DAE3 Sn528; Calibrated: 2020.03.16
- Phantom: SAM (Front) with CRP v5.0; Type: QD000P40CD; Serial: TP:1795
- Measurement SW: DASY52, Version 52.8 (8); SEMCAD X Version 14.6.10 (7331)

Ch189/Area Scan (71x71x1): Interpolated grid: dx=1.500 mm, dy=1.500 mm
Maximum value of SAR (interpolated) = 0.502 W/kg

Ch189/Zoom Scan (5x5x7)/Cube 0: Measurement grid: dx=8mm, dy=8mm, dz=5mm
Reference Value = 7.400 V/m; Power Drift = 0.11 dB
Peak SAR (extrapolated) = 0.541 W/kg
SAR(1 g) = 0.431 W/kg; SAR(10 g) = 0.329 W/kg
Maximum value of SAR (measured) = 0.492 W/kg



02_GSM1900_GPRS(2 Tx slots)_Right Cheek_Ch512

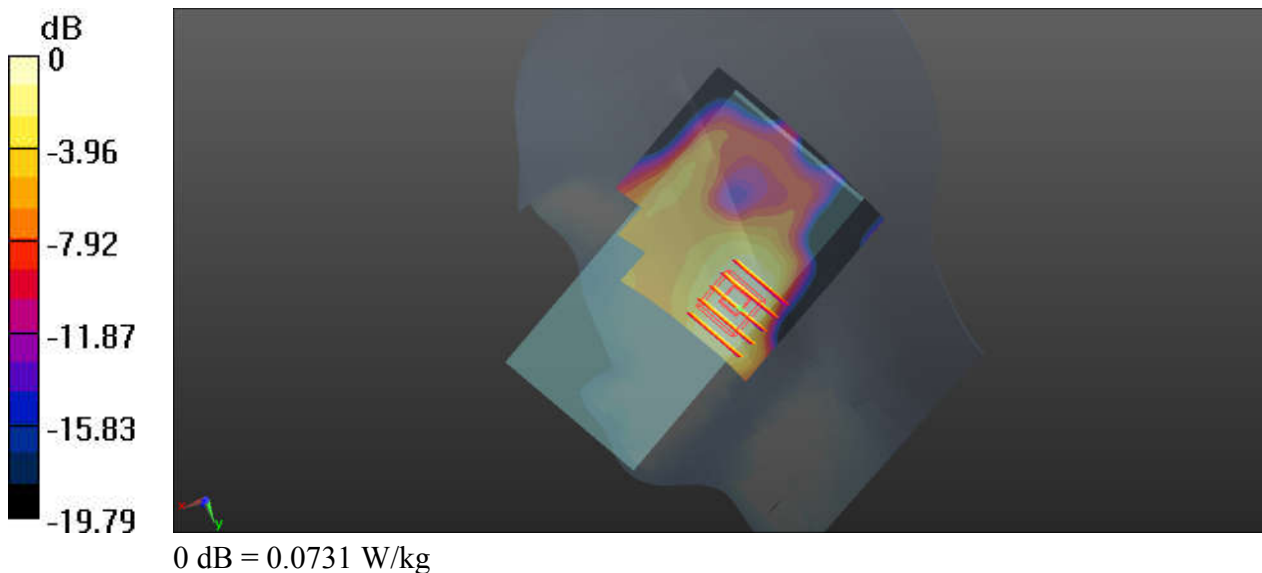
Communication System: UID 0, GPRS/EDGE10 (0); Frequency: 1850.2 MHz; Duty Cycle: 1:4.15
Medium: HSL_1900_200817 Medium parameters used: $f = 1850.2$ MHz; $\sigma = 1.357$ S/m; $\epsilon_r = 39.509$; $\rho = 1000$ kg/m³
Ambient Temperature : 23.6 °C; Liquid Temperature : 22.5 °C

DASY5 Configuration:

- Probe: EX3DV4 - SN7576; ConvF(8.58, 8.58, 8.58); Calibrated: 2020.01.22;
- Sensor-Surface: 2mm (Mechanical Surface Detection)
- Electronics: DAE3 Sn528; Calibrated: 2020.03.16
- Phantom: SAM (Front) with CRP v5.0; Type: QD000P40CD; Serial: TP:1795
- Measurement SW: DASY52, Version 52.8 (8); SEMCAD X Version 14.6.10 (7331)

Ch512/Area Scan (71x71x1): Interpolated grid: dx=1.500 mm, dy=1.500 mm
Maximum value of SAR (interpolated) = 0.0810 W/kg

Ch512/Zoom Scan (5x5x7)/Cube 0: Measurement grid: dx=8mm, dy=8mm, dz=5mm
Reference Value = 0 V/m; Power Drift = 0.09 dB
Peak SAR (extrapolated) = 0.0890 W/kg
SAR(1 g) = 0.058 W/kg; SAR(10 g) = 0.037 W/kg
Maximum value of SAR (measured) = 0.0731 W/kg



03_WCDMA V_RMC 12.2Kbps_Right Cheek_Ch4182

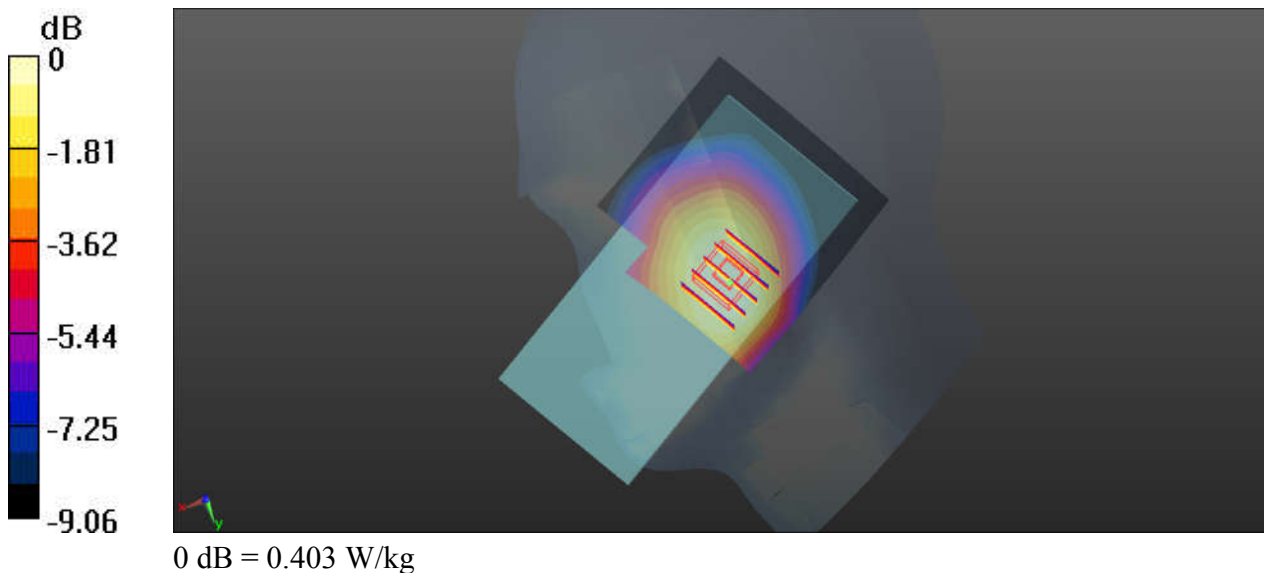
Communication System: UID 0, UMTS (0); Frequency: 836.4 MHz; Duty Cycle: 1:1
Medium: HSL_835_200822 Medium parameters used: $f = 836.4$ MHz; $\sigma = 0.912$ S/m; $\epsilon_r = 42.893$;
 $\rho = 1000$ kg/m³
Ambient Temperature : 23.5 °C; Liquid Temperature : 22.6 °C

DASY5 Configuration:

- Probe: EX3DV4 - SN7576; ConvF(10.45, 10.45, 10.45); Calibrated: 2020.01.22;
- Sensor-Surface: 2mm (Mechanical Surface Detection)
- Electronics: DAE3 Sn528; Calibrated: 2020.03.16
- Phantom: SAM (Front) with CRP v5.0; Type: QD000P40CD; Serial: TP:1795
- Measurement SW: DASY52, Version 52.8 (8); SEMCAD X Version 14.6.10 (7331)

Ch4182/Area Scan (71x71x1): Interpolated grid: dx=1.500 mm, dy=1.500 mm
Maximum value of SAR (interpolated) = 0.410 W/kg

Ch4182/Zoom Scan (5x5x7)/Cube 0: Measurement grid: dx=8mm, dy=8mm, dz=5mm
Reference Value = 1.097 V/m; Power Drift = 0.14 dB
Peak SAR (extrapolated) = 0.442 W/kg
SAR(1 g) = 0.356 W/kg; SAR(10 g) = 0.273 W/kg
Maximum value of SAR (measured) = 0.403 W/kg



04_WCDMA IV_RMC 12.2Kbps_Right Cheek_Ch1513

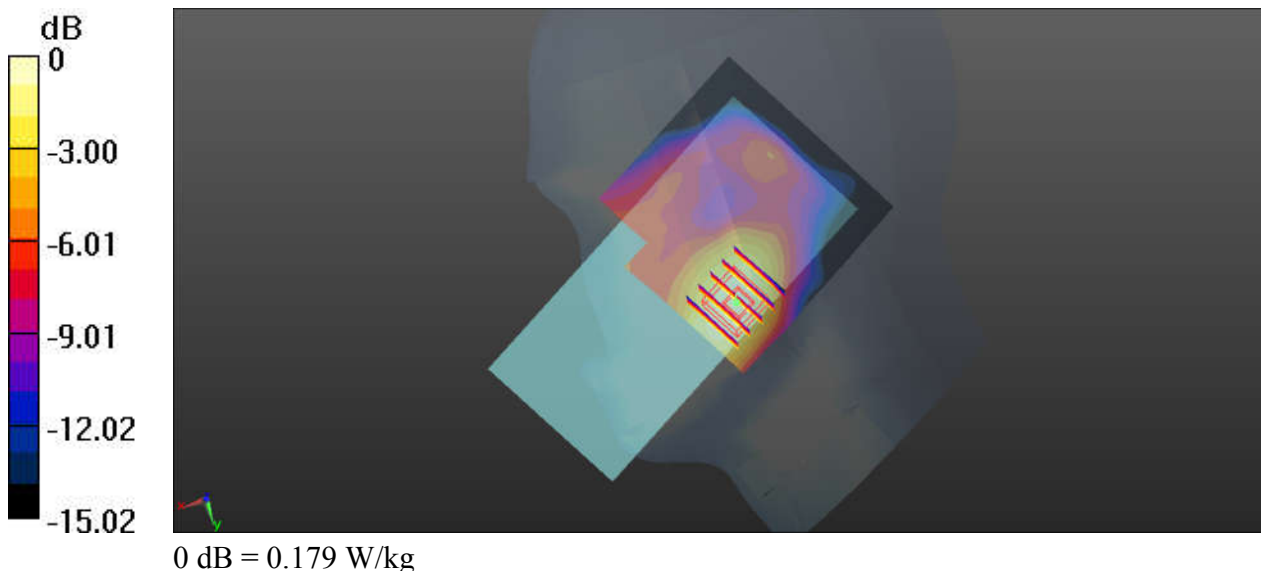
Communication System: UID 0, UMTS (0); Frequency: 1752.6 MHz; Duty Cycle: 1:1
Medium: HSL_1750_200817 Medium parameters used: $f = 1753$ MHz; $\sigma = 1.378$ S/m; $\epsilon_r = 38.824$;
 $\rho = 1000$ kg/m³
Ambient Temperature : 23.5 °C; Liquid Temperature : 22.7 °C

DASY5 Configuration:

- Probe: EX3DV4 - SN7576; ConvF(8.88, 8.88, 8.88); Calibrated: 2020.01.22;
- Sensor-Surface: 2mm (Mechanical Surface Detection)
- Electronics: DAE3 Sn528; Calibrated: 2020.03.16
- Phantom: SAM (Front) with CRP v5.0; Type: QD000P40CD; Serial: TP:1795
- Measurement SW: DASY52, Version 52.8 (8); SEMCAD X Version 14.6.10 (7331)

Ch1513/Area Scan (71x71x1): Interpolated grid: dx=1.500 mm, dy=1.500 mm
Maximum value of SAR (interpolated) = 0.179 W/kg

Ch1513/Zoom Scan (5x5x7)/Cube 0: Measurement grid: dx=8mm, dy=8mm, dz=5mm
Reference Value = 0 V/m; Power Drift = 0.03 dB
Peak SAR (extrapolated) = 0.212 W/kg
SAR(1 g) = 0.144 W/kg; SAR(10 g) = 0.092 W/kg
Maximum value of SAR (measured) = 0.179 W/kg



05_WCDMA II_RMC 12.2Kbps_Right Cheek_Ch9400

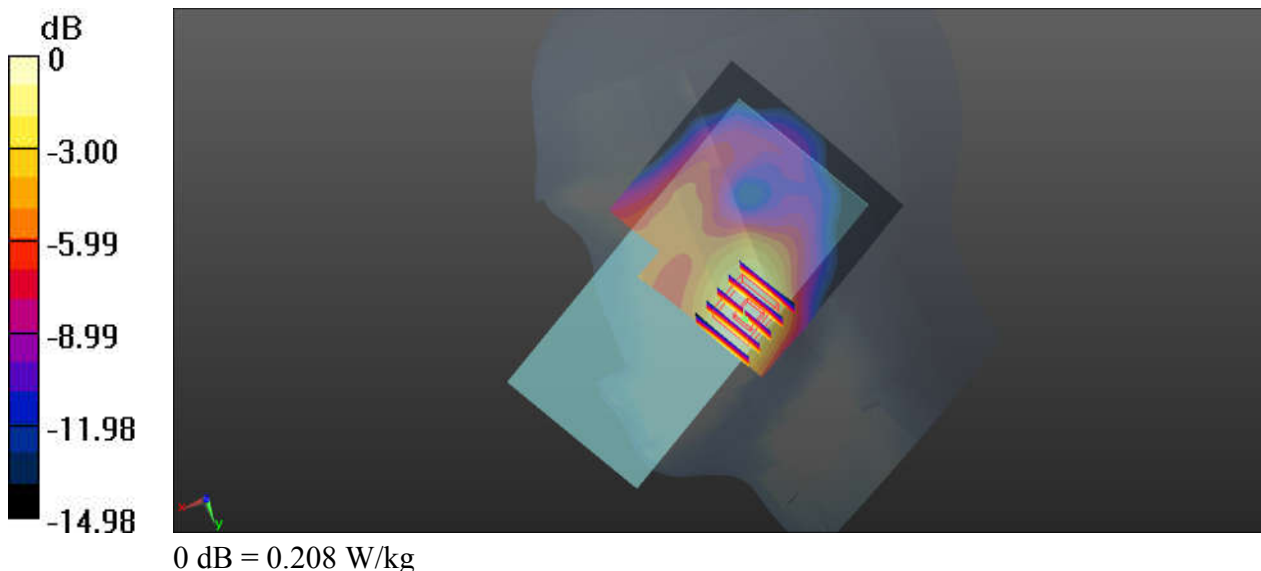
Communication System: UID 0, UMTS (0); Frequency: 1880 MHz; Duty Cycle: 1:1
Medium: HSL_1900_200817 Medium parameters used: $f = 1880$ MHz; $\sigma = 1.385$ S/m; $\epsilon_r = 39.388$;
 $\rho = 1000$ kg/m³
Ambient Temperature : 23.6 °C; Liquid Temperature : 22.5 °C

DASY5 Configuration:

- Probe: EX3DV4 - SN7576; ConvF(8.58, 8.58, 8.58); Calibrated: 2020.01.22;
- Sensor-Surface: 2mm (Mechanical Surface Detection)
- Electronics: DAE3 Sn528; Calibrated: 2020.03.16
- Phantom: SAM (Front) with CRP v5.0; Type: QD000P40CD; Serial: TP:1795
- Measurement SW: DASY52, Version 52.8 (8); SEMCAD X Version 14.6.10 (7331)

Ch9400/Area Scan (71x71x1): Interpolated grid: dx=1.500 mm, dy=1.500 mm
Maximum value of SAR (interpolated) = 0.203 W/kg

Ch9400/Zoom Scan (5x5x7)/Cube 0: Measurement grid: dx=8mm, dy=8mm, dz=5mm
Reference Value = 0.2760 V/m; Power Drift = 0.03 dB
Peak SAR (extrapolated) = 0.253 W/kg
SAR(1 g) = 0.163 W/kg; SAR(10 g) = 0.100 W/kg
Maximum value of SAR (measured) = 0.208 W/kg



06_CDMA2000 BC0_RC3+SO55_Right Cheek_Ch384

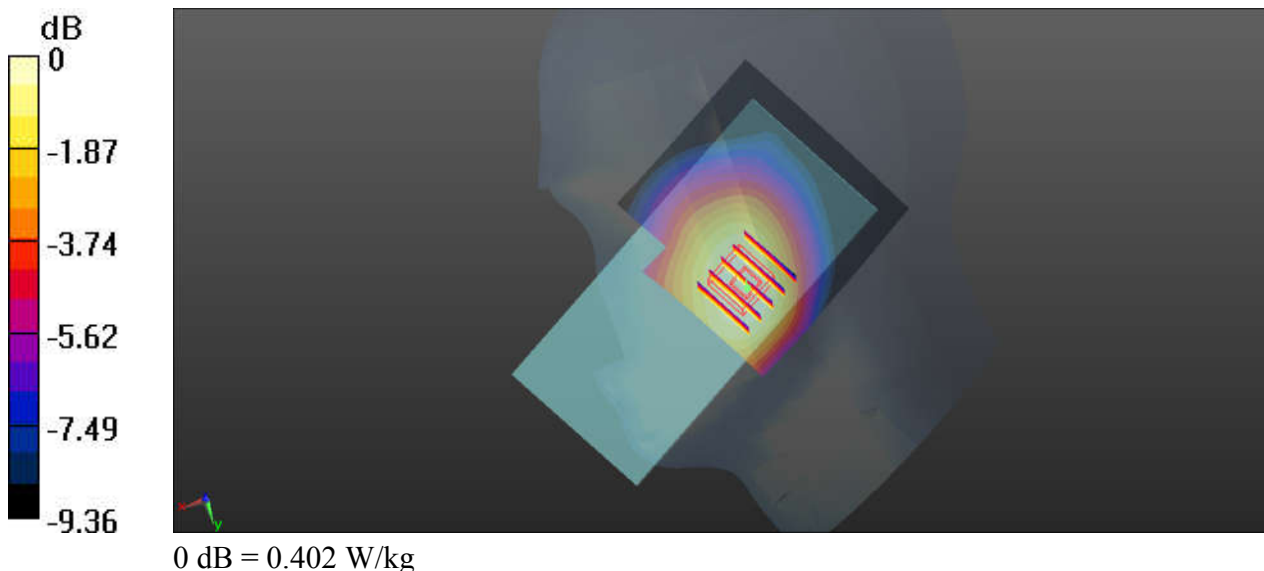
Communication System: UID 0, CDMA2000 (0); Frequency: 836.52 MHz; Duty Cycle: 1:1
Medium: HSL_835_200822 Medium parameters used: $f = 837$ MHz; $\sigma = 0.912$ S/m; $\epsilon_r = 42.886$; $\rho = 1000$ kg/m³
Ambient Temperature : 23.5 °C; Liquid Temperature : 22.6 °C

DASY5 Configuration:

- Probe: EX3DV4 - SN7576; ConvF(10.45, 10.45, 10.45); Calibrated: 2020.01.22;
- Sensor-Surface: 2mm (Mechanical Surface Detection)
- Electronics: DAE3 Sn528; Calibrated: 2020.03.16
- Phantom: SAM (Front) with CRP v5.0; Type: QD000P40CD; Serial: TP:1795
- Measurement SW: DASY52, Version 52.8 (8); SEMCAD X Version 14.6.10 (7331)

Ch384/Area Scan (71x71x1): Interpolated grid: dx=1.500 mm, dy=1.500 mm
Maximum value of SAR (interpolated) = 0.409 W/kg

Ch384/Zoom Scan (5x5x7)/Cube 0: Measurement grid: dx=8mm, dy=8mm, dz=5mm
Reference Value = 0.9920 V/m; Power Drift = 0.15 dB
Peak SAR (extrapolated) = 0.441 W/kg
SAR(1 g) = 0.351 W/kg; SAR(10 g) = 0.268 W/kg
Maximum value of SAR (measured) = 0.402 W/kg



07_CDMA2000 BC10_RC3+SO55_Right Cheek_Ch580

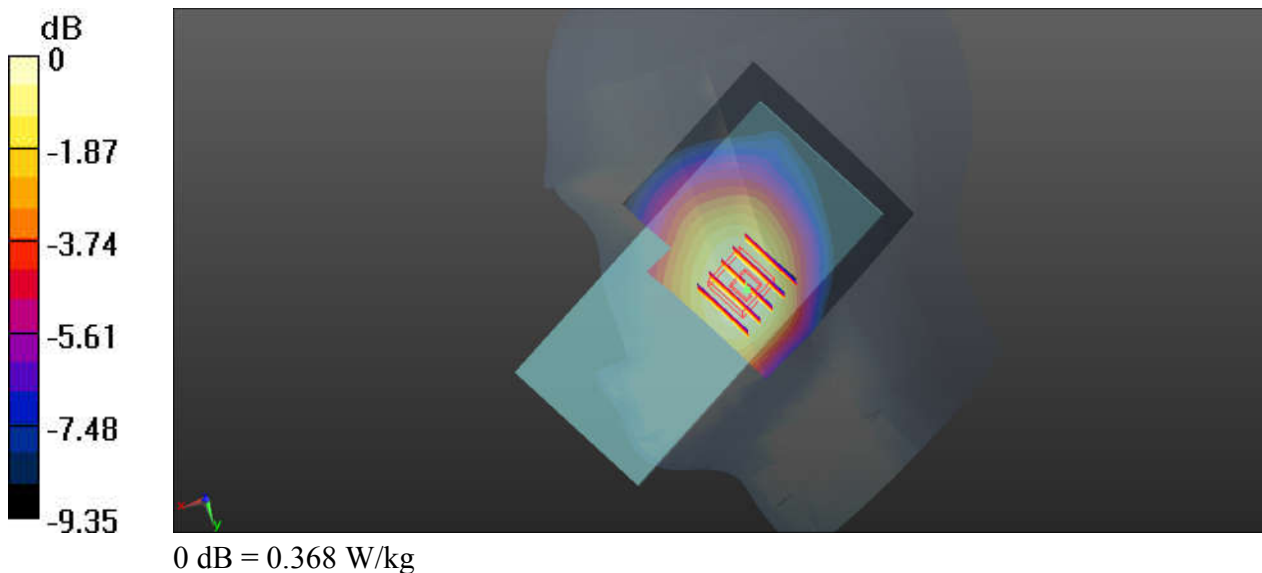
Communication System: UID 0, CDMA2000 (0); Frequency: 820.5 MHz; Duty Cycle: 1:1
Medium: HSL_835_200822 Medium parameters used: $f = 820.5$ MHz; $\sigma = 0.895$ S/m; $\epsilon_r = 43.097$;
 $\rho = 1000$ kg/m³
Ambient Temperature : 23.5 °C; Liquid Temperature : 22.6 °C

DASY5 Configuration:

- Probe: EX3DV4 - SN7576; ConvF(10.45, 10.45, 10.45); Calibrated: 2020.01.22;
- Sensor-Surface: 2mm (Mechanical Surface Detection)
- Electronics: DAE3 Sn528; Calibrated: 2020.03.16
- Phantom: SAM (Front) with CRP v5.0; Type: QD000P40CD; Serial: TP:1795
- Measurement SW: DASY52, Version 52.8 (8); SEMCAD X Version 14.6.10 (7331)

Ch580/Area Scan (71x71x1): Interpolated grid: dx=1.500 mm, dy=1.500 mm
Maximum value of SAR (interpolated) = 0.376 W/kg

Ch580/Zoom Scan (5x5x7)/Cube 0: Measurement grid: dx=8mm, dy=8mm, dz=5mm
Reference Value = 7.091 V/m; Power Drift = -0.02 dB
Peak SAR (extrapolated) = 0.402 W/kg
SAR(1 g) = 0.322 W/kg; SAR(10 g) = 0.247 W/kg
Maximum value of SAR (measured) = 0.368 W/kg



08_CDMA2000 BC1_RC3+SO55_Right Cheek_Ch600

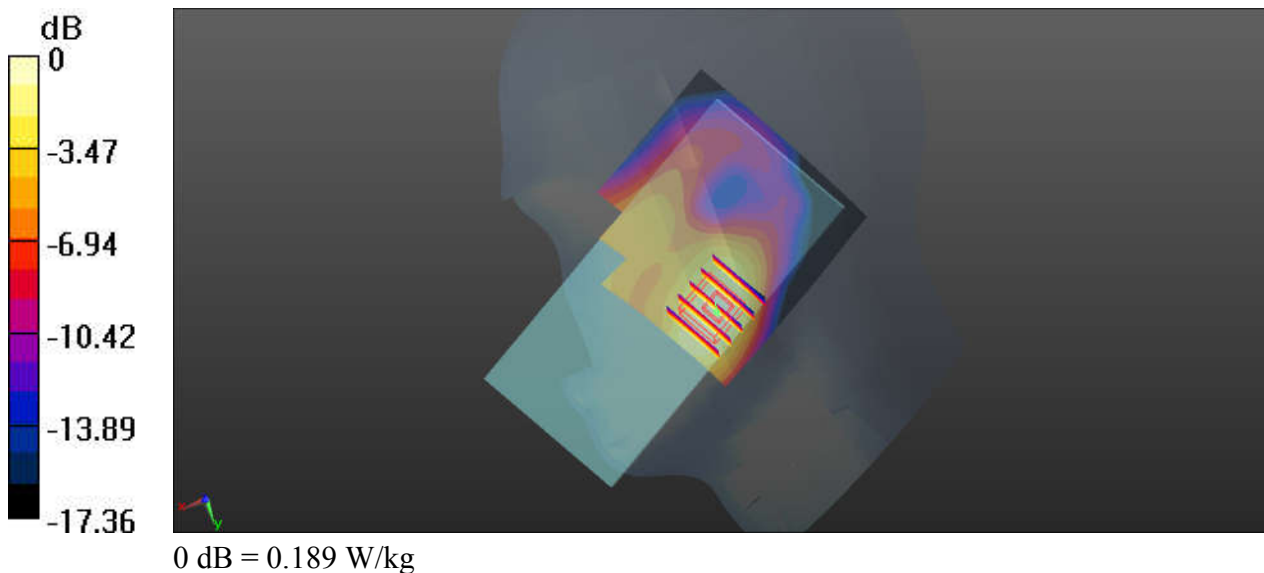
Communication System: UID 0, CDMA2000 (0); Frequency: 1880 MHz; Duty Cycle: 1:1
Medium: HSL_1900_200817 Medium parameters used: $f = 1880$ MHz; $\sigma = 1.385$ S/m; $\epsilon_r = 39.388$;
 $\rho = 1000$ kg/m³
Ambient Temperature : 23.6 °C; Liquid Temperature : 22.5 °C

DASY5 Configuration:

- Probe: EX3DV4 - SN7576; ConvF(8.58, 8.58, 8.58); Calibrated: 2020.01.22;
- Sensor-Surface: 2mm (Mechanical Surface Detection)
- Electronics: DAE3 Sn528; Calibrated: 2020.03.16
- Phantom: SAM (Front) with CRP v5.0; Type: QD000P40CD; Serial: TP:1795
- Measurement SW: DASY52, Version 52.8 (8); SEMCAD X Version 14.6.10 (7331)

Ch600/Area Scan (71x71x1): Interpolated grid: dx=1.500 mm, dy=1.500 mm
Maximum value of SAR (interpolated) = 0.179 W/kg

Ch600/Zoom Scan (5x5x7)/Cube 0: Measurement grid: dx=8mm, dy=8mm, dz=5mm
Reference Value = 3.884 V/m; Power Drift = 0.02 dB
Peak SAR (extrapolated) = 0.233 W/kg
SAR(1 g) = 0.150 W/kg; SAR(10 g) = 0.092 W/kg
Maximum value of SAR (measured) = 0.189 W/kg



09_LTE Band 71_20M_QPSK_1_0_Right Cheek_Ch133322

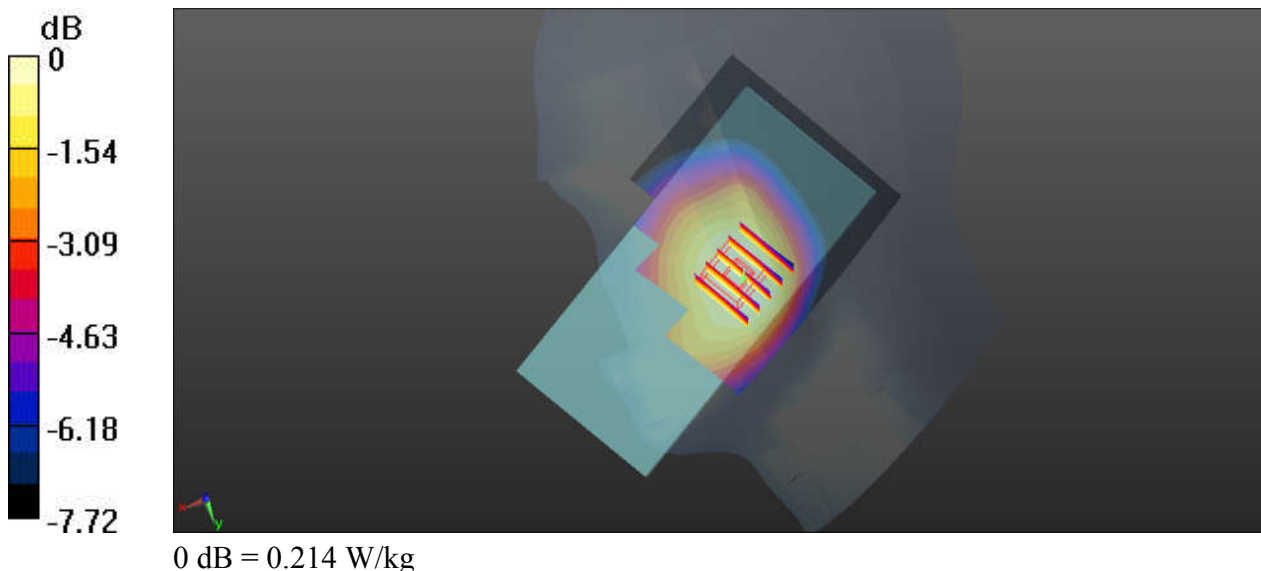
Communication System: UID 0, LTE (0); Frequency: 683 MHz; Duty Cycle: 1:1
Medium: HSL_750_200820 Medium parameters used: $f = 683 \text{ MHz}$; $\sigma = 0.848 \text{ S/m}$; $\epsilon_r = 42.096$; $\rho = 1000 \text{ kg/m}^3$
Ambient Temperature : $23.4 \text{ }^\circ\text{C}$; Liquid Temperature : $22.5 \text{ }^\circ\text{C}$

DASY5 Configuration:

- Probe: EX3DV4 - SN7576; ConvF(10.71, 10.71, 10.71); Calibrated: 2020.01.22;
- Sensor-Surface: 2mm (Mechanical Surface Detection)
- Electronics: DAE3 Sn528; Calibrated: 2020.03.16
- Phantom: SAM (Front) with CRP v5.0; Type: QD000P40CD; Serial: TP:1795
- Measurement SW: DASY52, Version 52.8 (8); SEMCAD X Version 14.6.10 (7331)

Ch133322/Area Scan (71x81x1): Interpolated grid: $dx=1.500 \text{ mm}$, $dy=1.500 \text{ mm}$
Maximum value of SAR (interpolated) = 0.217 W/kg

Ch133322/Zoom Scan (5x5x7)/Cube 0: Measurement grid: $dx=8\text{mm}$, $dy=8\text{mm}$, $dz=5\text{mm}$
Reference Value = 4.746 V/m ; Power Drift = -0.14 dB
Peak SAR (extrapolated) = 0.229 W/kg
SAR(1 g) = 0.195 W/kg ; SAR(10 g) = 0.159 W/kg
Maximum value of SAR (measured) = 0.214 W/kg



10_LTE Band 12_10M_QPSK_1_49_Right Cheek_Ch23095

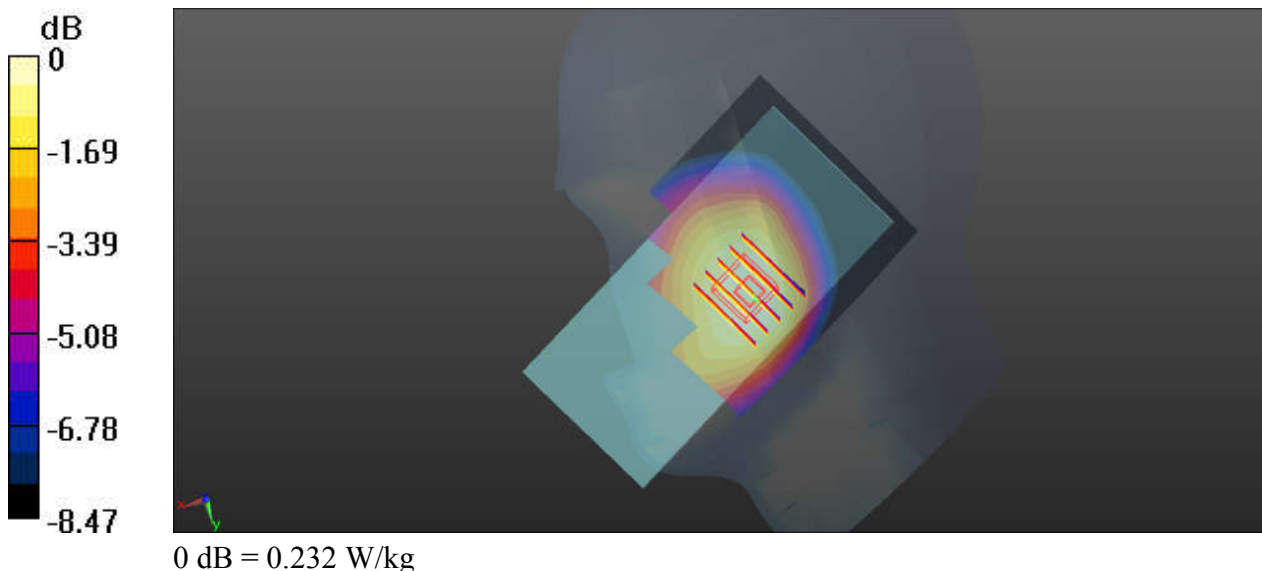
Communication System: UID 0, LTE (0); Frequency: 707.5 MHz; Duty Cycle: 1:1
Medium: HSL_750_200820 Medium parameters used: $f = 707.5$ MHz; $\sigma = 0.859$ S/m; $\epsilon_r = 41.717$;
 $\rho = 1000$ kg/m³
Ambient Temperature : 23.4 °C ; Liquid Temperature : 22.5 °C

DASY5 Configuration:

- Probe: EX3DV4 - SN7576; ConvF(10.71, 10.71, 10.71); Calibrated: 2020.01.22;
- Sensor-Surface: 2mm (Mechanical Surface Detection)
- Electronics: DAE3 Sn528; Calibrated: 2020.03.16
- Phantom: SAM (Front) with CRP v5.0; Type: QD000P40CD; Serial: TP:1795
- Measurement SW: DASY52, Version 52.8 (8); SEMCAD X Version 14.6.10 (7331)

Ch23095/Area Scan (71x81x1): Interpolated grid: dx=1.500 mm, dy=1.500 mm
Maximum value of SAR (interpolated) = 0.236 W/kg

Ch23095/Zoom Scan (6x5x7)/Cube 0: Measurement grid: dx=8mm, dy=8mm, dz=5mm
Reference Value = 5.352 V/m; Power Drift = 0.17 dB
Peak SAR (extrapolated) = 0.249 W/kg
SAR(1 g) = 0.211 W/kg; SAR(10 g) = 0.171 W/kg
Maximum value of SAR (measured) = 0.232 W/kg



11_LTE Band 13_10M_QPSK_1_25_Right Cheek_Ch23230

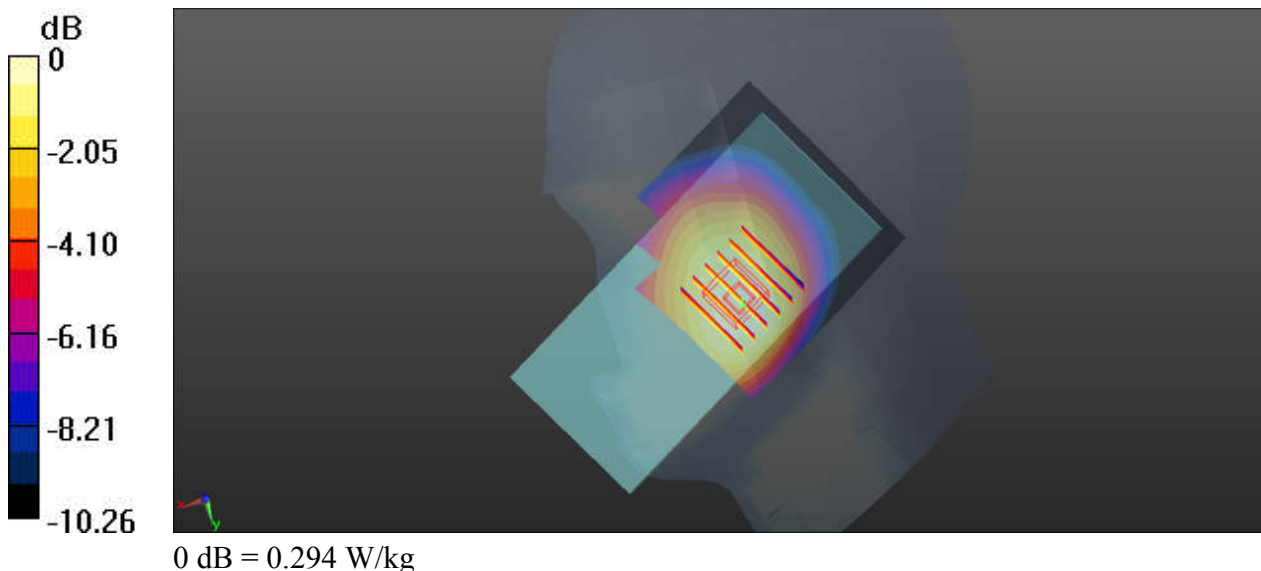
Communication System: UID 0, LTE (0); Frequency: 782 MHz; Duty Cycle: 1:1
Medium: HSL_750_200820 Medium parameters used: $f = 782 \text{ MHz}$; $\sigma = 0.901 \text{ S/m}$; $\epsilon_r = 40.08$; $\rho = 1000 \text{ kg/m}^3$
Ambient Temperature : $23.4 \text{ }^\circ\text{C}$; Liquid Temperature : $22.5 \text{ }^\circ\text{C}$

DASY5 Configuration:

- Probe: EX3DV4 - SN7576; ConvF(10.71, 10.71, 10.71); Calibrated: 2020.01.22;
- Sensor-Surface: 2mm (Mechanical Surface Detection)
- Electronics: DAE3 Sn528; Calibrated: 2020.03.16
- Phantom: SAM (Front) with CRP v5.0; Type: QD000P40CD; Serial: TP:1795
- Measurement SW: DASY52, Version 52.8 (8); SEMCAD X Version 14.6.10 (7331)

Ch23230/Area Scan (71x71x1): Interpolated grid: $dx=1.500 \text{ mm}$, $dy=1.500 \text{ mm}$
Maximum value of SAR (interpolated) = 0.299 W/kg

Ch23230/Zoom Scan (6x6x7)/Cube 0: Measurement grid: $dx=8\text{mm}$, $dy=8\text{mm}$, $dz=5\text{mm}$
Reference Value = 5.255 V/m ; Power Drift = -0.10 dB
Peak SAR (extrapolated) = 0.320 W/kg
SAR(1 g) = 0.261 W/kg ; SAR(10 g) = 0.204 W/kg
Maximum value of SAR (measured) = 0.294 W/kg



12_LTE Band 14_10M_QPSK_1_49_Right Cheek_Ch23330

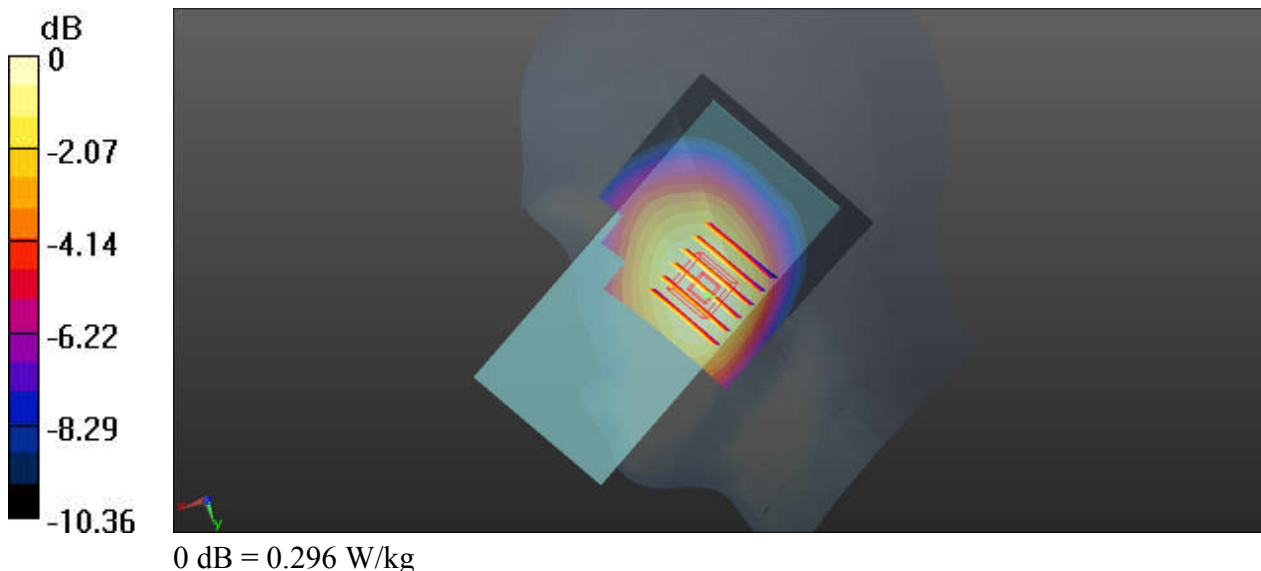
Communication System: UID 0, LTE (0); Frequency: 793 MHz; Duty Cycle: 1:1
Medium: HSL_750_200820 Medium parameters used: $f = 793$ MHz; $\sigma = 0.914$ S/m; $\epsilon_r = 39.952$; $\rho = 1000$ kg/m³
Ambient Temperature : 23.4 °C; Liquid Temperature : 22.5 °C

DASY5 Configuration:

- Probe: EX3DV4 - SN7576; ConvF(10.71, 10.71, 10.71); Calibrated: 2020.01.22;
- Sensor-Surface: 2mm (Mechanical Surface Detection)
- Electronics: DAE3 Sn528; Calibrated: 2020.03.16
- Phantom: SAM (Front) with CRP v5.0; Type: QD000P40CD; Serial: TP:1795
- Measurement SW: DASY52, Version 52.8 (8); SEMCAD X Version 14.6.10 (7331)

Ch23330/Area Scan (71x71x1): Interpolated grid: dx=1.500 mm, dy=1.500 mm
Maximum value of SAR (interpolated) = 0.303 W/kg

Ch23330/Zoom Scan (6x6x7)/Cube 0: Measurement grid: dx=8mm, dy=8mm, dz=5mm
Reference Value = 5.285 V/m; Power Drift = -0.16 dB
Peak SAR (extrapolated) = 0.323 W/kg
SAR(1 g) = 0.263 W/kg; SAR(10 g) = 0.204 W/kg
Maximum value of SAR (measured) = 0.296 W/kg



13_LTE Band 5_10M_QPSK_1_49_Right Cheek_Ch20525

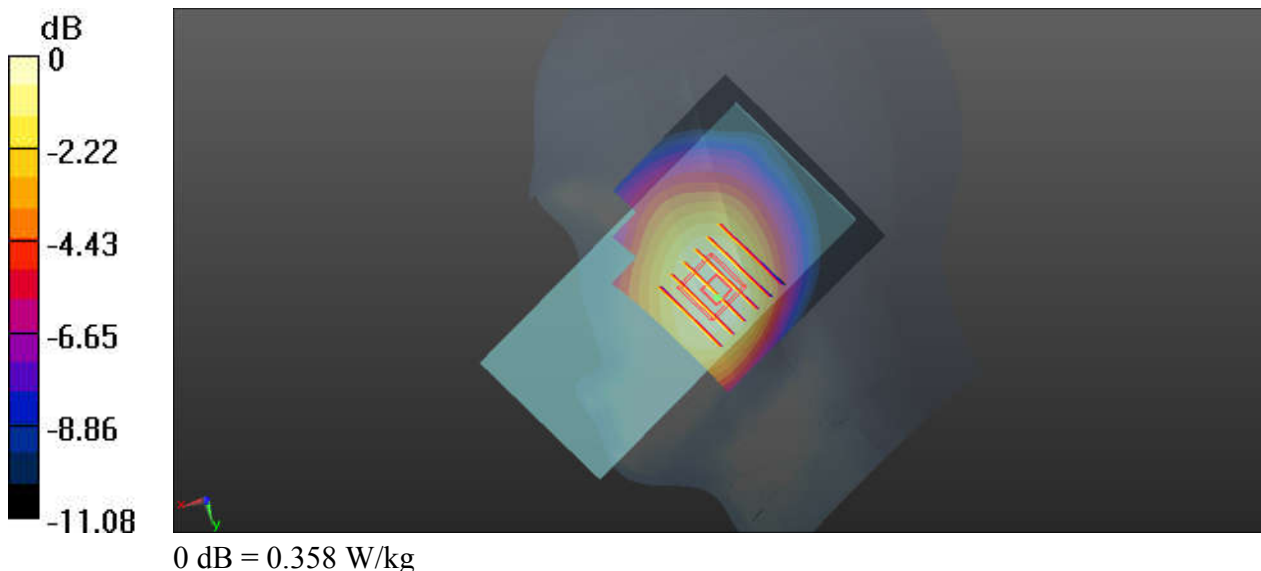
Communication System: UID 0, LTE (0); Frequency: 836.5 MHz; Duty Cycle: 1:1
Medium: HSL_835_200822 Medium parameters used: $f = 836.5$ MHz; $\sigma = 0.912$ S/m; $\epsilon_r = 42.892$;
 $\rho = 1000$ kg/m³
Ambient Temperature : 23.5 °C; Liquid Temperature : 22.6 °C

DASY5 Configuration:

- Probe: EX3DV4 - SN7576; ConvF(10.45, 10.45, 10.45); Calibrated: 2020.01.22;
- Sensor-Surface: 2mm (Mechanical Surface Detection)
- Electronics: DAE3 Sn528; Calibrated: 2020.03.16
- Phantom: SAM (Front) with CRP v5.0; Type: QD000P40CD; Serial: TP:1795
- Measurement SW: DASY52, Version 52.8 (8); SEMCAD X Version 14.6.10 (7331)

Ch20525/Area Scan (71x71x1): Interpolated grid: dx=1.500 mm, dy=1.500 mm
Maximum value of SAR (interpolated) = 0.367 W/kg

Ch20525/Zoom Scan (6x6x7)/Cube 0: Measurement grid: dx=8mm, dy=8mm, dz=5mm
Reference Value = 6.721 V/m; Power Drift = -0.09 dB
Peak SAR (extrapolated) = 0.393 W/kg
SAR(1 g) = 0.315 W/kg; SAR(10 g) = 0.240 W/kg
Maximum value of SAR (measured) = 0.358 W/kg



14_LTE Band 26_15M_QPSK_1_37_Right Cheek_Ch26965

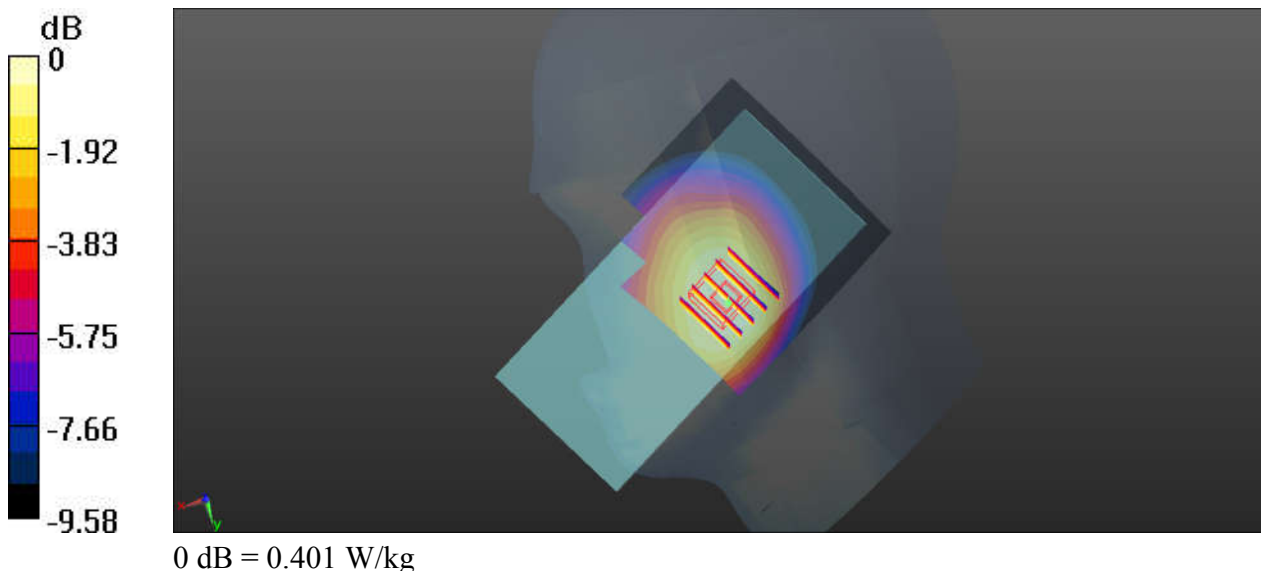
Communication System: UID 0, LTE (0); Frequency: 841.5 MHz; Duty Cycle: 1:1
Medium: HSL_835_200822 Medium parameters used: $f = 841.5$ MHz; $\sigma = 0.917$ S/m; $\epsilon_r = 42.819$;
 $\rho = 1000$ kg/m³
Ambient Temperature : 23.5 °C; Liquid Temperature : 22.6 °C

DASY5 Configuration:

- Probe: EX3DV4 - SN7576; ConvF(10.45, 10.45, 10.45); Calibrated: 2020.01.22;
- Sensor-Surface: 2mm (Mechanical Surface Detection)
- Electronics: DAE3 Sn528; Calibrated: 2020.03.16
- Phantom: SAM (Front) with CRP v5.0; Type: QD000P40CD; Serial: TP:1795
- Measurement SW: DASY52, Version 52.8 (8); SEMCAD X Version 14.6.10 (7331)

Ch26965/Area Scan (71x71x1): Interpolated grid: dx=1.500 mm, dy=1.500 mm
Maximum value of SAR (interpolated) = 0.411 W/kg

Ch26965/Zoom Scan (5x5x7)/Cube 0: Measurement grid: dx=8mm, dy=8mm, dz=5mm
Reference Value = 1.212 V/m; Power Drift = 0.17 dB
Peak SAR (extrapolated) = 0.438 W/kg
SAR(1 g) = 0.351 W/kg; SAR(10 g) = 0.268 W/kg
Maximum value of SAR (measured) = 0.401 W/kg



15_LTE Band 66_20M_QPSK_1_99_Right Cheek_Ch132572

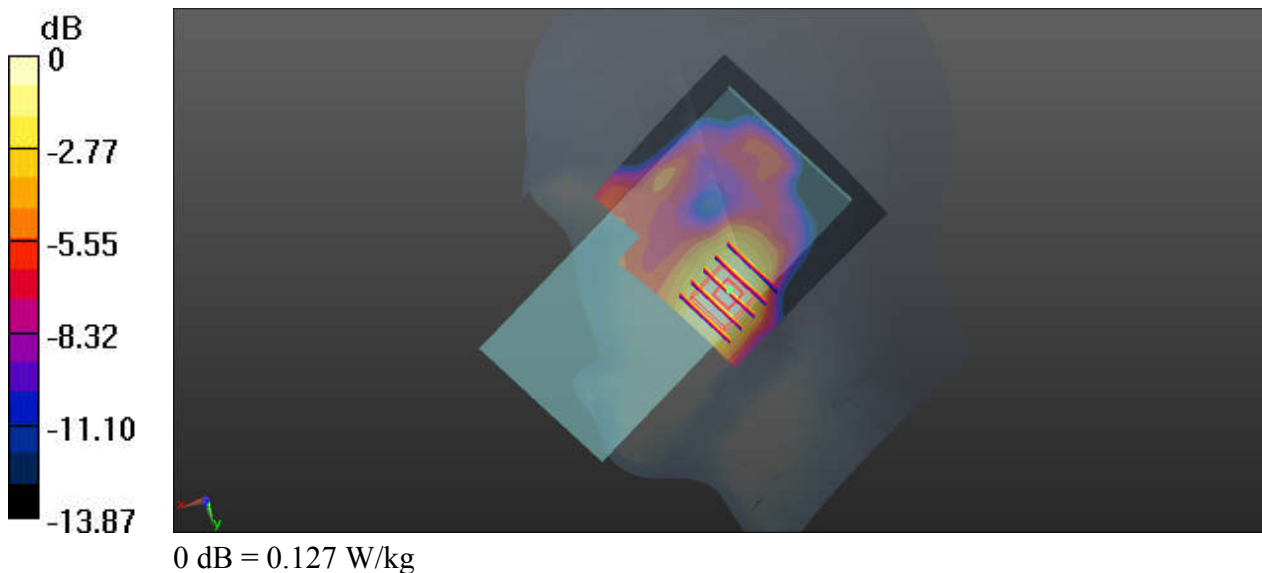
Communication System: UID 0, LTE (0); Frequency: 1770 MHz; Duty Cycle: 1:1
Medium: HSL_1750_200817 Medium parameters used: $f = 1770$ MHz; $\sigma = 1.397$ S/m; $\epsilon_r = 38.762$;
 $\rho = 1000$ kg/m³
Ambient Temperature : 23.5 °C; Liquid Temperature : 22.7 °C

DASY5 Configuration:

- Probe: EX3DV4 - SN7576; ConvF(8.88, 8.88, 8.88); Calibrated: 2020.01.22;
- Sensor-Surface: 2mm (Mechanical Surface Detection)
- Electronics: DAE3 Sn528; Calibrated: 2020.03.16
- Phantom: SAM (Front) with CRP v5.0; Type: QD000P40CD; Serial: TP:1795
- Measurement SW: DASY52, Version 52.8 (8); SEMCAD X Version 14.6.10 (7331)

Ch132572/Area Scan (71x71x1): Interpolated grid: dx=1.500 mm, dy=1.500 mm
Maximum value of SAR (interpolated) = 0.126 W/kg

Ch132572/Zoom Scan (5x5x7)/Cube 0: Measurement grid: dx=8mm, dy=8mm, dz=5mm
Reference Value = 0.3310 V/m; Power Drift = 0.13 dB
Peak SAR (extrapolated) = 0.153 W/kg
SAR(1 g) = 0.102 W/kg; SAR(10 g) = 0.065 W/kg
Maximum value of SAR (measured) = 0.127 W/kg



16_LTE Band 25_20M_QPSK_1_49_Right Cheek_Ch26340

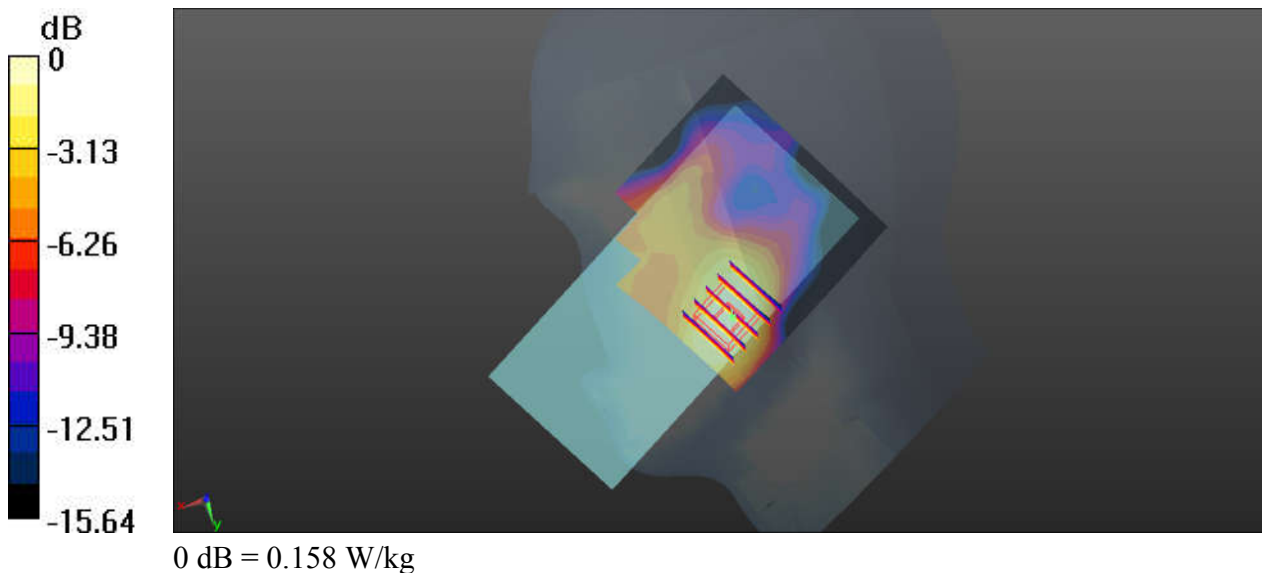
Communication System: UID 0, LTE (0); Frequency: 1880 MHz; Duty Cycle: 1:1
Medium: HSL_1900_200817 Medium parameters used: $f = 1880$ MHz; $\sigma = 1.385$ S/m; $\epsilon_r = 39.388$;
 $\rho = 1000$ kg/m³
Ambient Temperature : 23.6 °C; Liquid Temperature : 22.5 °C

DASY5 Configuration:

- Probe: EX3DV4 - SN7576; ConvF(8.58, 8.58, 8.58); Calibrated: 2020.01.22;
- Sensor-Surface: 2mm (Mechanical Surface Detection)
- Electronics: DAE3 Sn528; Calibrated: 2020.03.16
- Phantom: SAM (Front) with CRP v5.0; Type: QD000P40CD; Serial: TP:1795
- Measurement SW: DASY52, Version 52.8 (8); SEMCAD X Version 14.6.10 (7331)

Ch26340/Area Scan (71x71x1): Interpolated grid: dx=1.500 mm, dy=1.500 mm
Maximum value of SAR (interpolated) = 0.162 W/kg

Ch26340/Zoom Scan (5x5x7)/Cube 0: Measurement grid: dx=8mm, dy=8mm, dz=5mm
Reference Value = 0 V/m; Power Drift = 0.05 dB
Peak SAR (extrapolated) = 0.190 W/kg
SAR(1 g) = 0.123 W/kg; SAR(10 g) = 0.076 W/kg
Maximum value of SAR (measured) = 0.158 W/kg



17_LTE Band 7_20M_QPSK_1_99_Left Cheek_Ch20850

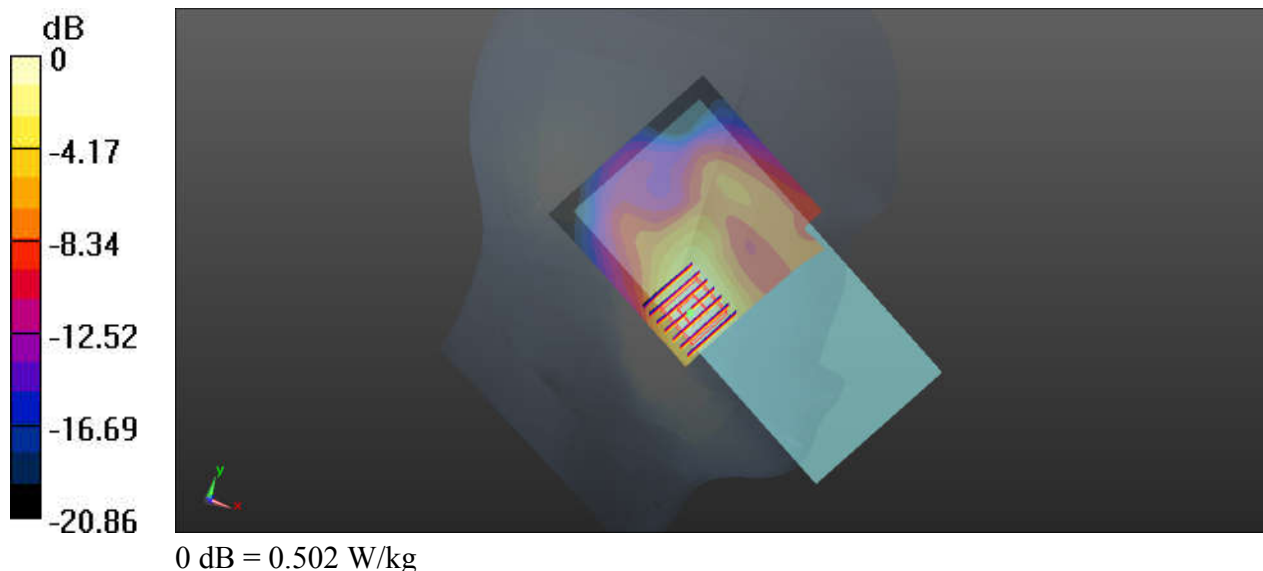
Communication System: UID 0, LTE (0); Frequency: 2510 MHz; Duty Cycle: 1:1
 Medium: HSL_2600_200818 Medium parameters used: $f = 2510$ MHz; $\sigma = 1.946$ S/m; $\epsilon_r = 38.676$;
 $\rho = 1000$ kg/m³
 Ambient Temperature : 23.6 °C; Liquid Temperature : 22.4 °C

DASY5 Configuration:

- Probe: EX3DV4 - SN7576; ConvF(7.47, 7.47, 7.47); Calibrated: 2020.01.22;
- Sensor-Surface: 2mm (Mechanical Surface Detection)
- Electronics: DAE3 Sn528; Calibrated: 2020.03.16
- Phantom: SAM (Front) with CRP v5.0; Type: QD000P40CD; Serial: TP:1795
- Measurement SW: DASY52, Version 52.8 (8); SEMCAD X Version 14.6.10 (7331)

Ch20850/Area Scan (81x81x1): Interpolated grid: dx=1.200 mm, dy=1.200 mm
 Maximum value of SAR (interpolated) = 0.497 W/kg

Ch20850/Zoom Scan (7x7x7)/Cube 0: Measurement grid: dx=5mm, dy=5mm, dz=5mm
 Reference Value = 3.816 V/m; Power Drift = 0.11 dB
 Peak SAR (extrapolated) = 0.645 W/kg
SAR(1 g) = 0.353 W/kg; SAR(10 g) = 0.187 W/kg
 Maximum value of SAR (measured) = 0.502 W/kg



18_LTE Band 41_20M_QPSK_1_0_Left Cheek_Ch39750

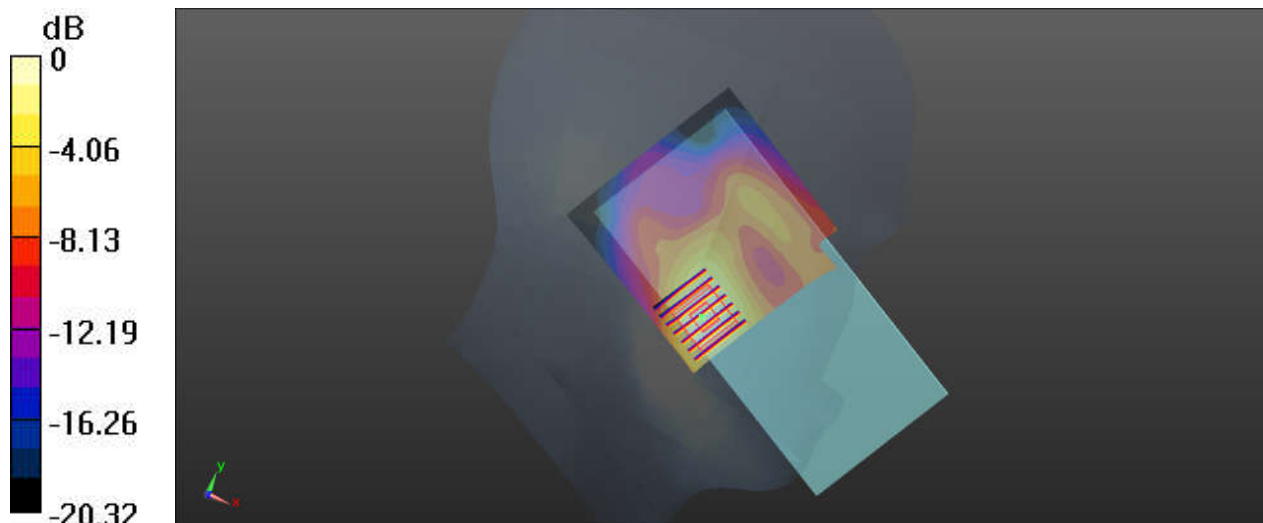
Communication System: UID 0, LTE (0); Frequency: 2506 MHz; Duty Cycle: 1:2.331
 Medium: HSL_2600_200818 Medium parameters used: $f = 2506$ MHz; $\sigma = 1.941$ S/m; $\epsilon_r = 38.69$; $\rho = 1000$ kg/m³
 Ambient Temperature : 23.6 °C; Liquid Temperature : 22.4 °C

DASY5 Configuration:

- Probe: EX3DV4 - SN7576; ConvF(7.47, 7.47, 7.47); Calibrated: 2020.01.22;
- Sensor-Surface: 2mm (Mechanical Surface Detection)
- Electronics: DAE3 Sn528; Calibrated: 2020.03.16
- Phantom: SAM (Front) with CRP v5.0; Type: QD000P40CD; Serial: TP:1795
- Measurement SW: DASY52, Version 52.8 (8); SEMCAD X Version 14.6.10 (7331)

Ch39750/Area Scan (81x81x1): Interpolated grid: dx=1.200 mm, dy=1.200 mm
 Maximum value of SAR (interpolated) = 0.436 W/kg

Ch39750/Zoom Scan (7x7x7)/Cube 0: Measurement grid: dx=5mm, dy=5mm, dz=5mm
 Reference Value = 3.799 V/m; Power Drift = 0.08 dB
 Peak SAR (extrapolated) = 0.544 W/kg
SAR(1 g) = 0.305 W/kg; SAR(10 g) = 0.161 W/kg
 Maximum value of SAR (measured) = 0.429 W/kg



0 dB = 0.429 W/kg

19_Bluetooth_DH5 1Mbps_Left Cheek_Ch78

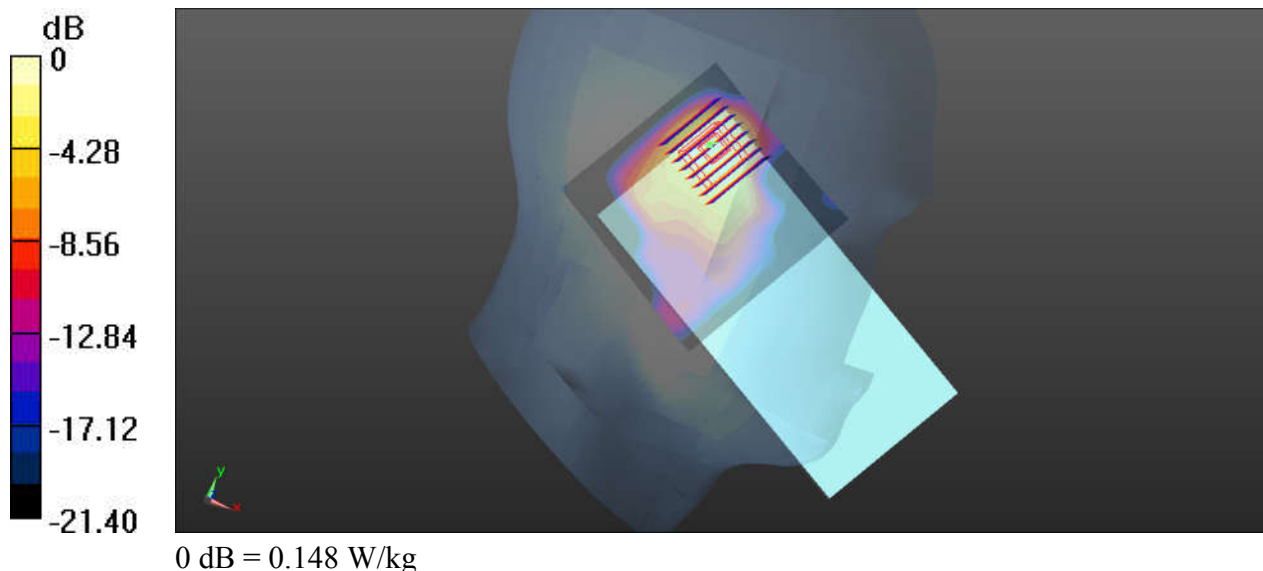
Communication System: UID 0, Bluetooth (0); Frequency: 2480 MHz; Duty Cycle: 1:1.304
 Medium: HSL_2450_200824 Medium parameters used: $f = 2480$ MHz; $\sigma = 1.863$ S/m; $\epsilon_r = 39.958$;
 $\rho = 1000$ kg/m³
 Ambient Temperature : 23.6 °C; Liquid Temperature : 22.7 °C

DASY5 Configuration:

- Probe: EX3DV4 - SN7576; ConvF(7.76, 7.76, 7.76); Calibrated: 2020.01.22;
- Sensor-Surface: 2mm (Mechanical Surface Detection)
- Electronics: DAE3 Sn528; Calibrated: 2020.03.16
- Phantom: SAM (Front) with CRP v5.0; Type: QD000P40CD; Serial: TP:1795
- Measurement SW: DASY52, Version 52.8 (8); SEMCAD X Version 14.6.10 (7331)

Ch78/Area Scan (81x81x1): Interpolated grid: dx=1.200 mm, dy=1.200 mm
 Maximum value of SAR (interpolated) = 0.174 W/kg

Ch78/Zoom Scan (8x8x7)/Cube 0: Measurement grid: dx=5mm, dy=5mm, dz=5mm
 Reference Value = 4.394 V/m; Power Drift = 0.08 dB
 Peak SAR (extrapolated) = 0.203 W/kg
SAR(1 g) = 0.101 W/kg; SAR(10 g) = 0.048 W/kg
 Maximum value of SAR (measured) = 0.148 W/kg



20_WLAN2.4GHz_802.11b 1Mbps_Left Cheek_Ch11

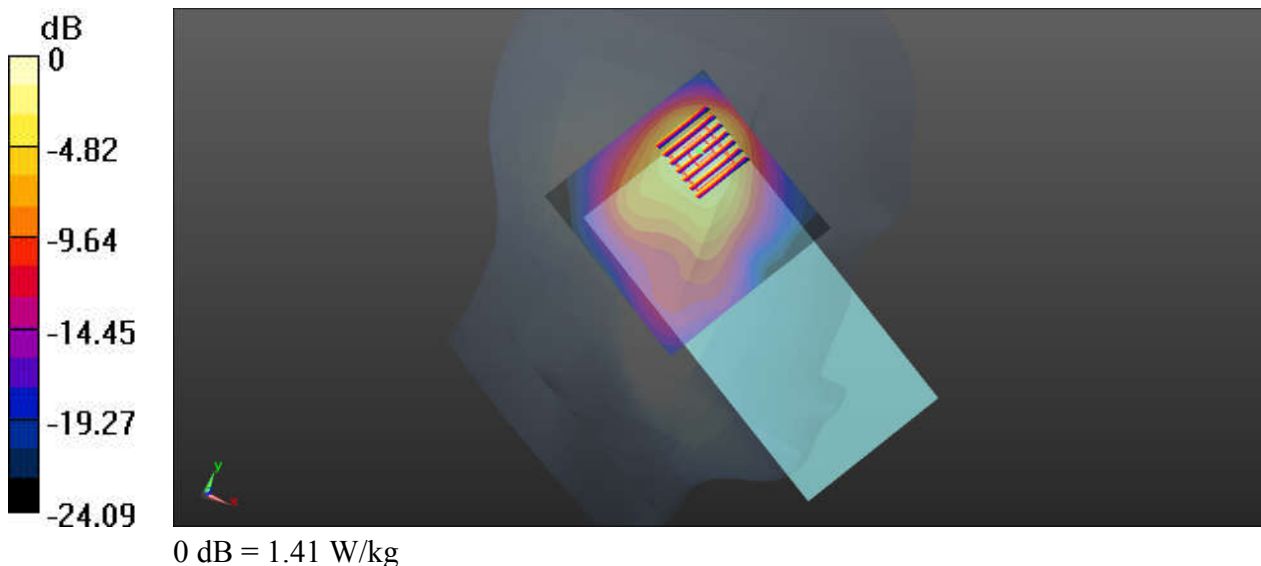
Communication System: UID 0, WIFI (0); Frequency: 2462 MHz; Duty Cycle: 1:1.01
Medium: HSL_2450_200824 Medium parameters used: $f = 2462$ MHz; $\sigma = 1.842$ S/m; $\epsilon_r = 40.039$;
 $\rho = 1000$ kg/m³
Ambient Temperature : 23.6 °C; Liquid Temperature : 22.7 °C

DASY5 Configuration:

- Probe: EX3DV4 - SN7576; ConvF(7.76, 7.76, 7.76); Calibrated: 2020.01.22;
- Sensor-Surface: 2mm (Mechanical Surface Detection)
- Electronics: DAE3 Sn528; Calibrated: 2020.03.16
- Phantom: SAM (Front) with CRP v5.0; Type: QD000P40CD; Serial: TP:1795
- Measurement SW: DASY52, Version 52.8 (8); SEMCAD X Version 14.6.10 (7331)

Ch11/Area Scan (81x81x1): Interpolated grid: dx=1.200 mm, dy=1.200 mm
Maximum value of SAR (interpolated) = 1.60 W/kg

Ch11/Zoom Scan (7x7x7)/Cube 0: Measurement grid: dx=5mm, dy=5mm, dz=5mm
Reference Value = 14.80 V/m; Power Drift = -0.03 dB
Peak SAR (extrapolated) = 1.97 W/kg
SAR(1 g) = 0.964 W/kg; SAR(10 g) = 0.457 W/kg
Maximum value of SAR (measured) = 1.41 W/kg



21_WLAN5GHz_802.11n-HT40 MCS0_Left Tilted_Ch54

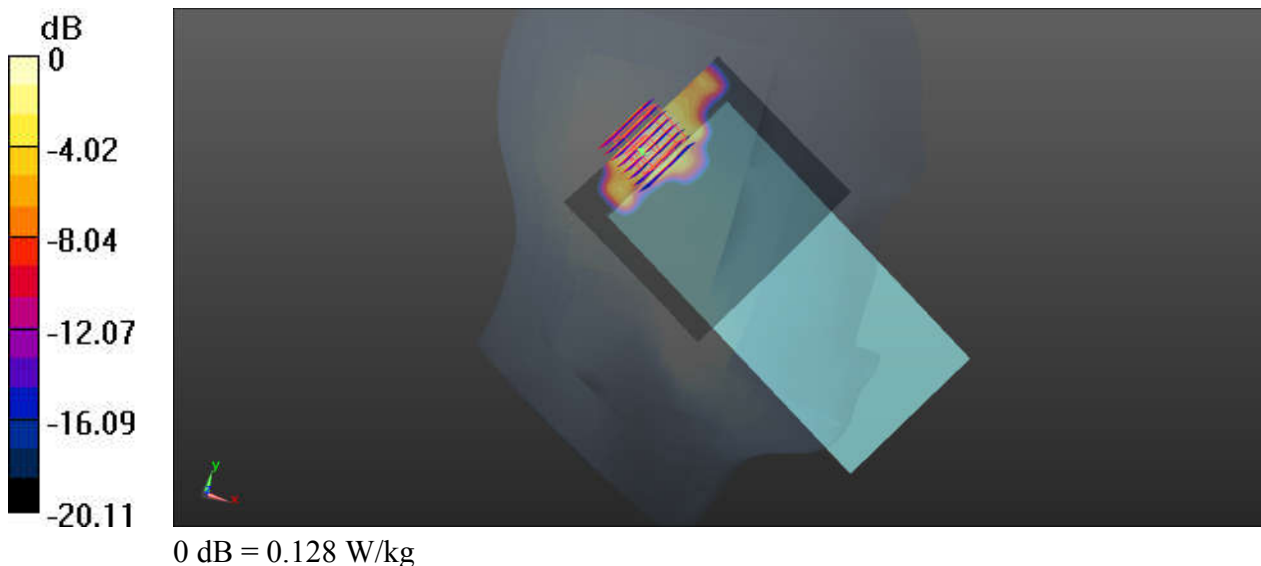
Communication System: UID 0, WIFI (0); Frequency: 5270 MHz; Duty Cycle: 1:1.051
Medium: HSL_5250_200826 Medium parameters used: $f = 5270$ MHz; $\sigma = 4.781$ S/m; $\epsilon_r = 36.839$;
 $\rho = 1000$ kg/m³
Ambient Temperature : 23.4 °C; Liquid Temperature : 22.8 °C

DASY5 Configuration:

- Probe: EX3DV4 - SN7576; ConvF(5.2, 5.2, 5.2); Calibrated: 2020.01.22
- Sensor-Surface: 1.4mm (Mechanical Surface Detection)
- Electronics: DAE3 Sn528; Calibrated: 2020.03.16
- Phantom: SAM (Front) with CRP v5.0; Type: QD000P40CD; Serial: TP:1795
- Measurement SW: DASY52, Version 52.8 (8); SEMCAD X Version 14.6.10 (7331)

Ch54/Area Scan (101x91x1): Interpolated grid: dx=1.000 mm, dy=1.000 mm
Maximum value of SAR (interpolated) = 0.152 W/kg

Ch54/Zoom Scan (9x8x7)/Cube 0: Measurement grid: dx=4mm, dy=4mm, dz=1.4mm
Reference Value = 3.337 V/m; Power Drift = -0.04 dB
Peak SAR (extrapolated) = 0.197 W/kg
SAR(1 g) = 0.062 W/kg; SAR(10 g) = 0.025 W/kg
Maximum value of SAR (measured) = 0.128 W/kg



22_WLAN5GHz_802.11n-HT40 MCS0_Left Tilted_Ch102

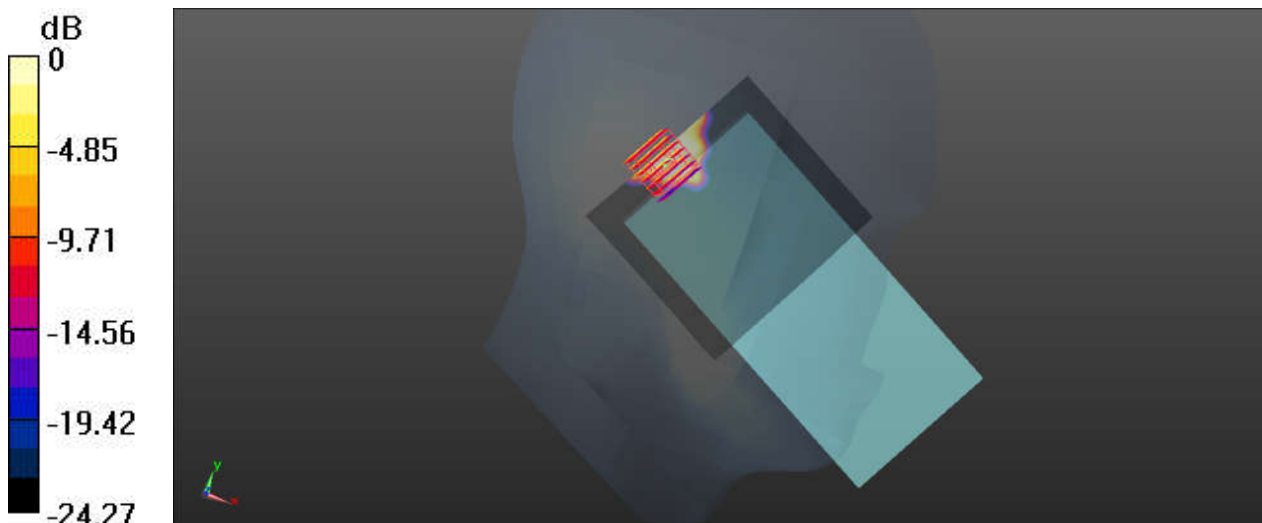
Communication System: UID 0, WIFI (0); Frequency: 5510 MHz; Duty Cycle: 1:1.051
Medium: HSL_5600_200827 Medium parameters used: $f = 5510$ MHz; $\sigma = 5.072$ S/m; $\epsilon_r = 36.351$;
 $\rho = 1000$ kg/m³
Ambient Temperature : 23.5 °C; Liquid Temperature : 22.8 °C

DASY5 Configuration:

- Probe: EX3DV4 - SN7576; ConvF(4.62, 4.62, 4.62); Calibrated: 2020.01.22
- Sensor-Surface: 1.4mm (Mechanical Surface Detection)
- Electronics: DAE3 Sn528; Calibrated: 2020.03.16
- Phantom: SAM (Front) with CRP v5.0; Type: QD000P40CD; Serial: TP:1795
- Measurement SW: DASY52, Version 52.8 (8); SEMCAD X Version 14.6.10 (7331)

Ch102/Area Scan (101x91x1): Interpolated grid: dx=1.000 mm, dy=1.000 mm
Maximum value of SAR (interpolated) = 0.224 W/kg

Ch102/Zoom Scan (7x7x7)/Cube 0: Measurement grid: dx=4mm, dy=4mm, dz=1.4mm
Reference Value = 2.608 V/m; Power Drift = 0.06 dB
Peak SAR (extrapolated) = 0.189 W/kg
SAR(1 g) = 0.054 W/kg; SAR(10 g) = 0.021 W/kg
Maximum value of SAR (measured) = 0.114 W/kg



23_WLAN5GHz_802.11a_6Mbps_Left Tilted_Ch165

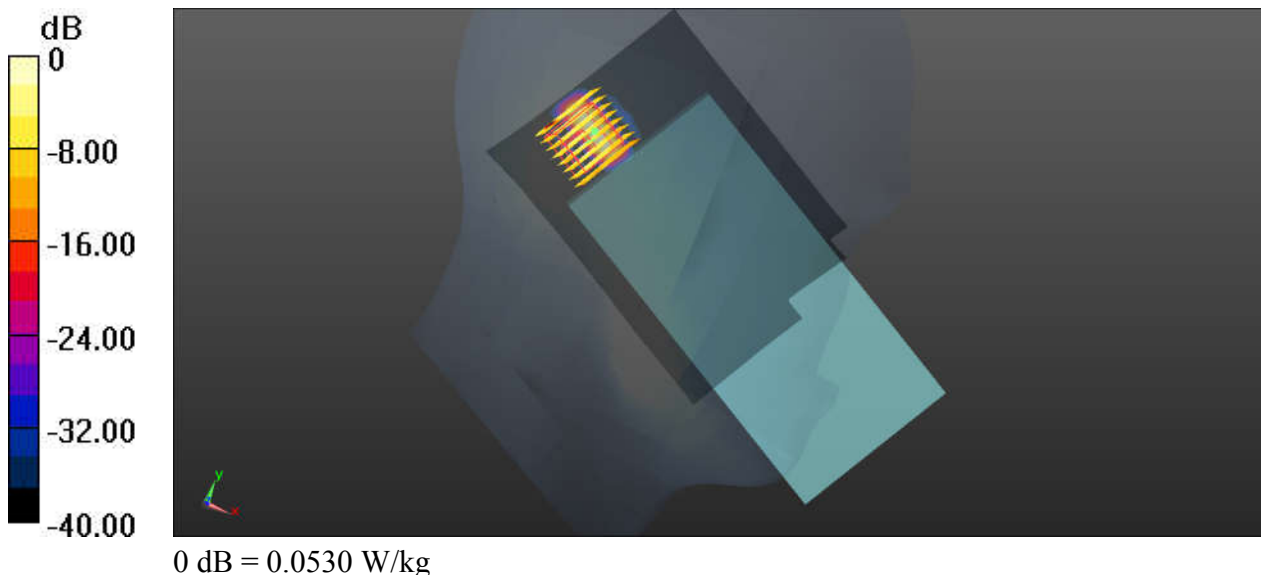
Communication System: UID 0, WIFI (0); Frequency: 5825 MHz; Duty Cycle: 1:1.019
Medium: HSL_5750_200828 Medium parameters used: $f = 5825 \text{ MHz}$; $\sigma = 5.466 \text{ S/m}$; $\epsilon_r = 35.646$;
 $\rho = 1000 \text{ kg/m}^3$
Ambient Temperature : $23.6 \text{ }^\circ\text{C}$; Liquid Temperature : $22.8 \text{ }^\circ\text{C}$

DASY5 Configuration:

- Probe: EX3DV4 - SN7576; ConvF(4.83, 4.83, 4.83); Calibrated: 2020.01.22
- Sensor-Surface: 1.4mm (Mechanical Surface Detection)
- Electronics: DAE3 Sn528; Calibrated: 2020.03.16
- Phantom: SAM (Front) with CRP v5.0; Type: QD000P40CD; Serial: TP:1795
- Measurement SW: DASY52, Version 52.8 (8); SEMCAD X Version 14.6.10 (7331)

Ch165/Area Scan (101x141x1): Interpolated grid: $dx=1.000 \text{ mm}$, $dy=1.000 \text{ mm}$
Maximum value of SAR (interpolated) = 0.0426 W/kg

Ch165/Zoom Scan (9x8x7)/Cube 0: Measurement grid: $dx=4\text{mm}$, $dy=4\text{mm}$, $dz=1.4\text{mm}$
Reference Value = 0.5760 V/m ; Power Drift = -0.09 dB
Peak SAR (extrapolated) = 2.41 W/kg
SAR(1 g) = 0.026 W/kg ; SAR(10 g) = 0.012 W/kg
Maximum value of SAR (measured) = 0.0530 W/kg



24_GSM850_GPRS(2 Tx slots)_Back_5mm_Ch128

Communication System: UID 0, GPRS/EDGE10 (0); Frequency: 824.2 MHz; Duty Cycle: 1:4.15
Medium: HSL_835_200829 Medium parameters used: $f = 824.2$ MHz; $\sigma = 0.895$ S/m; $\epsilon_r = 41.309$;
 $\rho = 1000$ kg/m³
Ambient Temperature : 23.4 °C; Liquid Temperature : 22.6 °C

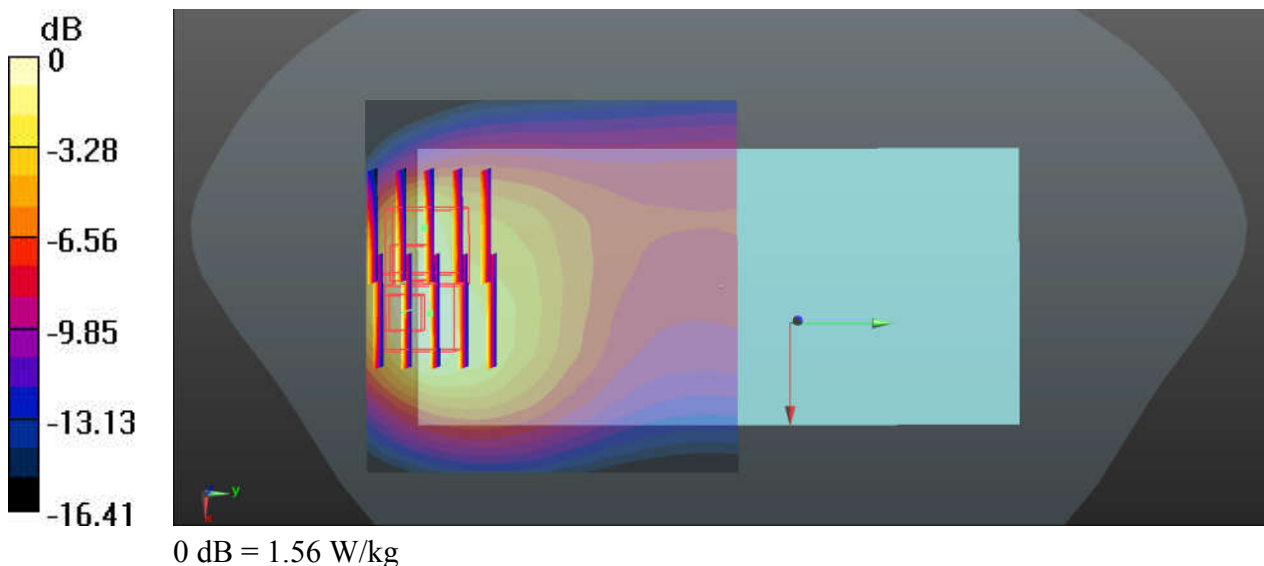
DASY5 Configuration:

- Probe: EX3DV4 - SN7576; ConvF(10.45, 10.45, 10.45); Calibrated: 2020.01.22;
- Sensor-Surface: 2mm (Mechanical Surface Detection)
- Electronics: DAE3 Sn528; Calibrated: 2020.03.16
- Phantom: SAM (Front) with CRP v5.0; Type: QD000P40CD; Serial: TP:1795
- Measurement SW: DASY52, Version 52.8 (8); SEMCAD X Version 14.6.10 (7331)

Ch128/Area Scan (71x71x1): Interpolated grid: dx=1.500 mm, dy=1.500 mm
Maximum value of SAR (interpolated) = 1.56 W/kg

Ch128/Zoom Scan (5x5x7)/Cube 0: Measurement grid: dx=8mm, dy=8mm, dz=5mm
Reference Value = 16.85 V/m; Power Drift = 0.08 dB
Peak SAR (extrapolated) = 2.17 W/kg
SAR(1 g) = 1.08 W/kg; SAR(10 g) = 0.591 W/kg
Maximum value of SAR (measured) = 1.64 W/kg

Ch128/Zoom Scan (5x5x7)/Cube 1: Measurement grid: dx=8mm, dy=8mm, dz=5mm
Reference Value = 16.85 V/m; Power Drift = 0.08 dB
Peak SAR (extrapolated) = 1.89 W/kg
SAR(1 g) = 1.04 W/kg; SAR(10 g) = 0.585 W/kg
Maximum value of SAR (measured) = 1.43 W/kg



25_GSM1900_GPRS(2 Tx slots)_Back_5mm_Ch810

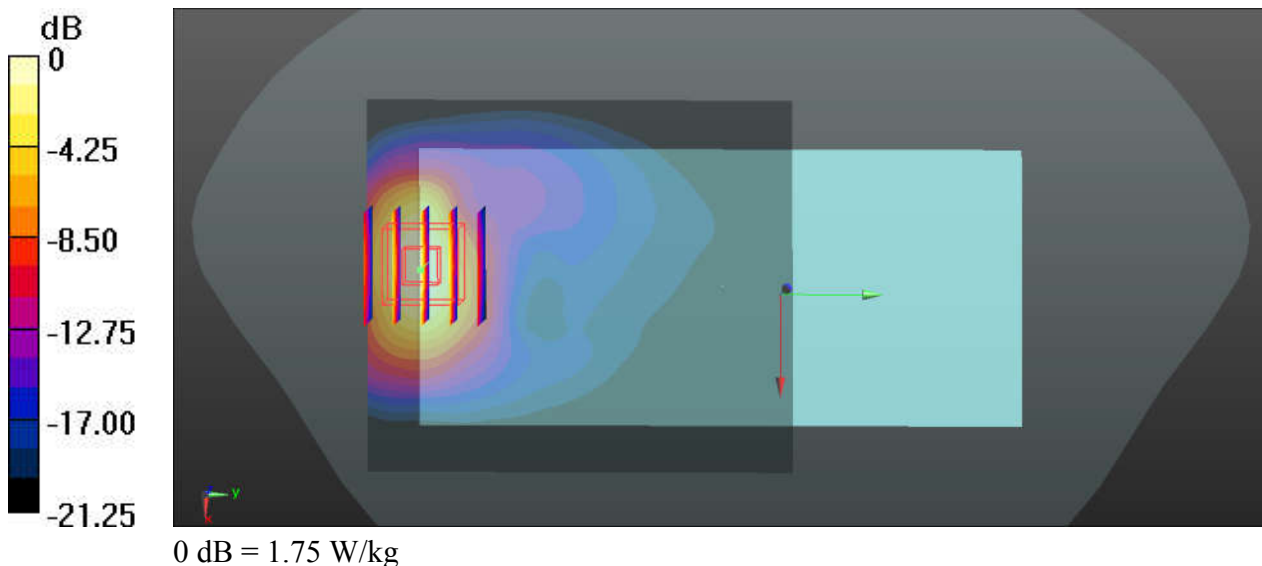
Communication System: UID 0, GPRS/EDGE10 (0); Frequency: 1909.8 MHz; Duty Cycle: 1:4.15
Medium: HSL_1900_200903 Medium parameters used: $f = 1910$ MHz; $\sigma = 1.458$ S/m; $\epsilon_r = 38.945$;
 $\rho = 1000$ kg/m³
Ambient Temperature : 23.4 °C; Liquid Temperature : 22.7 °C

DASY5 Configuration:

- Probe: EX3DV4 - SN7576; ConvF(8.58, 8.58, 8.58); Calibrated: 2020.01.22;
- Sensor-Surface: 2mm (Mechanical Surface Detection)
- Electronics: DAE3 Sn528; Calibrated: 2020.03.16
- Phantom: SAM (Front) with CRP v5.0; Type: QD000P40CD; Serial: TP:1795
- Measurement SW: DASY52, Version 52.8 (8); SEMCAD X Version 14.6.10 (7331)

Ch810/Area Scan (71x81x1): Interpolated grid: dx=1.500 mm, dy=1.500 mm
Maximum value of SAR (interpolated) = 1.79 W/kg

Ch810/Zoom Scan (5x5x7)/Cube 0: Measurement grid: dx=8mm, dy=8mm, dz=5mm
Reference Value = 1.049 V/m; Power Drift = 0.05 dB
Peak SAR (extrapolated) = 2.25 W/kg
SAR(1 g) = 1.2 W/kg; SAR(10 g) = 0.573 W/kg
Maximum value of SAR (measured) = 1.75 W/kg



26_WCDMA V_RMC 12.2Kbps_Back_5mm_Ch4233

Communication System: UID 0, UMTS (0); Frequency: 846.6 MHz; Duty Cycle: 1:1
Medium: HSL_835_200829 Medium parameters used: $f = 846.6$ MHz; $\sigma = 0.914$ S/m; $\epsilon_r = 41.098$;
 $\rho = 1000$ kg/m³
Ambient Temperature : 23.4 °C; Liquid Temperature : 22.6 °C

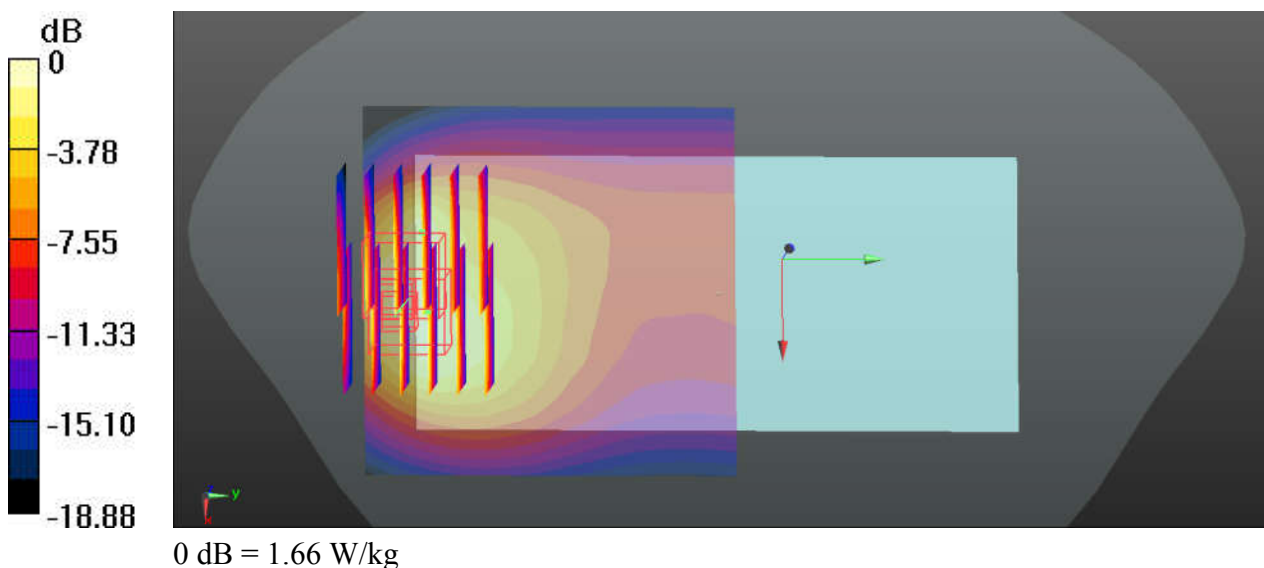
DASY5 Configuration:

- Probe: EX3DV4 - SN7576; ConvF(10.45, 10.45, 10.45); Calibrated: 2020.01.22;
- Sensor-Surface: 2mm (Mechanical Surface Detection)
- Electronics: DAE3 Sn528; Calibrated: 2020.03.16
- Phantom: SAM (Front) with CRP v5.0; Type: QD000P40CD; Serial: TP:1795
- Measurement SW: DASY52, Version 52.8 (8); SEMCAD X Version 14.6.10 (7331)

Ch4233/Area Scan (71x71x1): Interpolated grid: dx=1.500 mm, dy=1.500 mm
Maximum value of SAR (interpolated) = 1.41 W/kg

Ch4233/Zoom Scan (6x6x7)/Cube 0: Measurement grid: dx=8mm, dy=8mm, dz=5mm
Reference Value = 16.66 V/m; Power Drift = 0.04 dB
Peak SAR (extrapolated) = 2.26 W/kg
SAR(1 g) = 1.09 W/kg; SAR(10 g) = 0.579 W/kg
Maximum value of SAR (measured) = 1.71 W/kg

Ch4233/Zoom Scan (6x6x7)/Cube 1: Measurement grid: dx=8mm, dy=8mm, dz=5mm
Reference Value = 16.66 V/m; Power Drift = 0.04 dB
Peak SAR (extrapolated) = 2.24 W/kg
SAR(1 g) = 1.06 W/kg; SAR(10 g) = 0.543 W/kg
Maximum value of SAR (measured) = 1.66 W/kg



27_WCDMA IV_RMC 12.2Kbps_Back_5mm_Ch1513

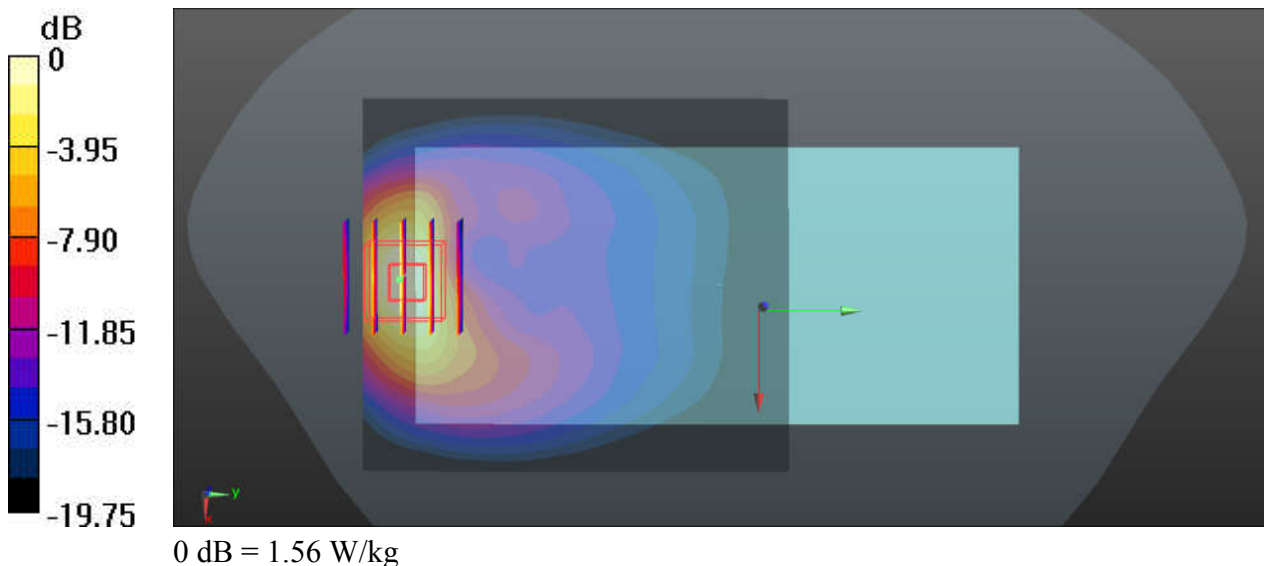
Communication System: UID 0, UMTS (0); Frequency: 1752.6 MHz; Duty Cycle: 1:1
Medium: HSL_1750_200901 Medium parameters used: $f = 1753$ MHz; $\sigma = 1.41$ S/m; $\epsilon_r = 41.52$; $\rho = 1000$ kg/m³
Ambient Temperature : 23.5 °C; Liquid Temperature : 22.4 °C

DASY5 Configuration:

- Probe: EX3DV4 - SN7576; ConvF(8.88, 8.88, 8.88); Calibrated: 2020.01.22;
- Sensor-Surface: 2mm (Mechanical Surface Detection)
- Electronics: DAE3 Sn528; Calibrated: 2020.03.16
- Phantom: SAM (Front) with CRP v5.0; Type: QD000P40CD; Serial: TP:1795
- Measurement SW: DASY52, Version 52.8 (8); SEMCAD X Version 14.6.10 (7331)

Ch1513/Area Scan (71x81x1): Interpolated grid: dx=1.500 mm, dy=1.500 mm
Maximum value of SAR (interpolated) = 1.66 W/kg

Ch1513/Zoom Scan (5x5x7)/Cube 0: Measurement grid: dx=8mm, dy=8mm, dz=5mm
Reference Value = 4.204 V/m; Power Drift = 0.08 dB
Peak SAR (extrapolated) = 1.98 W/kg
SAR(1 g) = 1.11 W/kg; SAR(10 g) = 0.549 W/kg
Maximum value of SAR (measured) = 1.56 W/kg



28_WCDMA II_RMC 12.2Kbps_Back_5mm_Ch9400

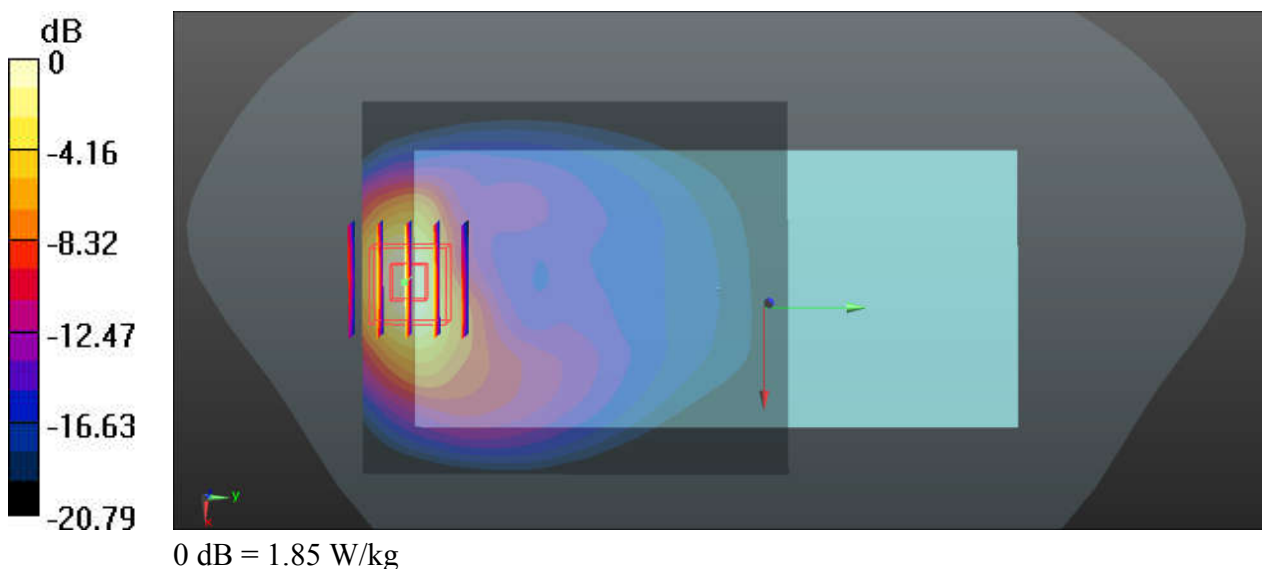
Communication System: UID 0, UMTS (0); Frequency: 1880 MHz; Duty Cycle: 1:1
Medium: HSL_1900_200903 Medium parameters used: $f = 1880$ MHz; $\sigma = 1.428$ S/m; $\epsilon_r = 39.095$;
 $\rho = 1000$ kg/m³
Ambient Temperature : 23.4 °C; Liquid Temperature : 22.7 °C

DASY5 Configuration:

- Probe: EX3DV4 - SN7576; ConvF(8.58, 8.58, 8.58); Calibrated: 2020.01.22;
- Sensor-Surface: 2mm (Mechanical Surface Detection)
- Electronics: DAE3 Sn528; Calibrated: 2020.03.16
- Phantom: SAM (Front) with CRP v5.0; Type: QD000P40CD; Serial: TP:1795
- Measurement SW: DASY52, Version 52.8 (8); SEMCAD X Version 14.6.10 (7331)

Ch9400/Area Scan (71x81x1): Interpolated grid: dx=1.500 mm, dy=1.500 mm
Maximum value of SAR (interpolated) = 1.94 W/kg

Ch9400/Zoom Scan (5x5x7)/Cube 0: Measurement grid: dx=8mm, dy=8mm, dz=5mm
Reference Value = 4.663 V/m; Power Drift = 0.04 dB
Peak SAR (extrapolated) = 2.34 W/kg
SAR(1 g) = 1.27 W/kg; SAR(10 g) = 0.613 W/kg
Maximum value of SAR (measured) = 1.85 W/kg



29_CDMA2000 BC0_RTAP 153.6Kbps_Back_5mm_Ch1013

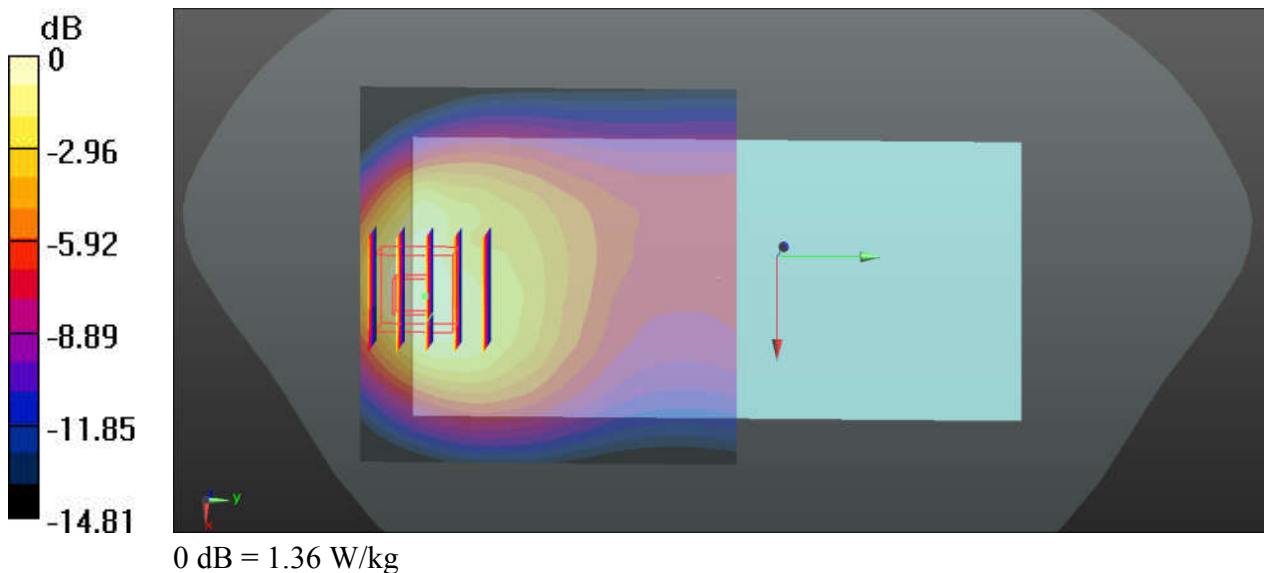
Communication System: UID 0, CDMA2000 (0); Frequency: 824.7 MHz; Duty Cycle: 1:1
Medium: HSL_835_200829 Medium parameters used: $f = 824.7$ MHz; $\sigma = 0.895$ S/m; $\epsilon_r = 41.304$;
 $\rho = 1000$ kg/m³
Ambient Temperature : 23.4 °C; Liquid Temperature : 22.6 °C

DASY5 Configuration:

- Probe: EX3DV4 - SN7576; ConvF(10.45, 10.45, 10.45); Calibrated: 2020.01.22;
- Sensor-Surface: 2mm (Mechanical Surface Detection)
- Electronics: DAE3 Sn528; Calibrated: 2020.03.16
- Phantom: SAM (Front) with CRP v5.0; Type: QD000P40CD; Serial: TP:1795
- Measurement SW: DASY52, Version 52.8 (8); SEMCAD X Version 14.6.10 (7331)

Ch1013/Area Scan (71x71x1): Interpolated grid: dx=1.500 mm, dy=1.500 mm
Maximum value of SAR (interpolated) = 1.60 W/kg

Ch1013/Zoom Scan (5x5x7)/Cube 0: Measurement grid: dx=8mm, dy=8mm, dz=5mm
Reference Value = 16.99 V/m; Power Drift = 0.08 dB
Peak SAR (extrapolated) = 2.33 W/kg
SAR(1 g) = 1.12 W/kg; SAR(10 g) = 0.601 W/kg
Maximum value of SAR (measured) = 1.36 W/kg



30_CDMA2000 BC10_RTAP 153.6Kbps_Back_5mm_Ch580

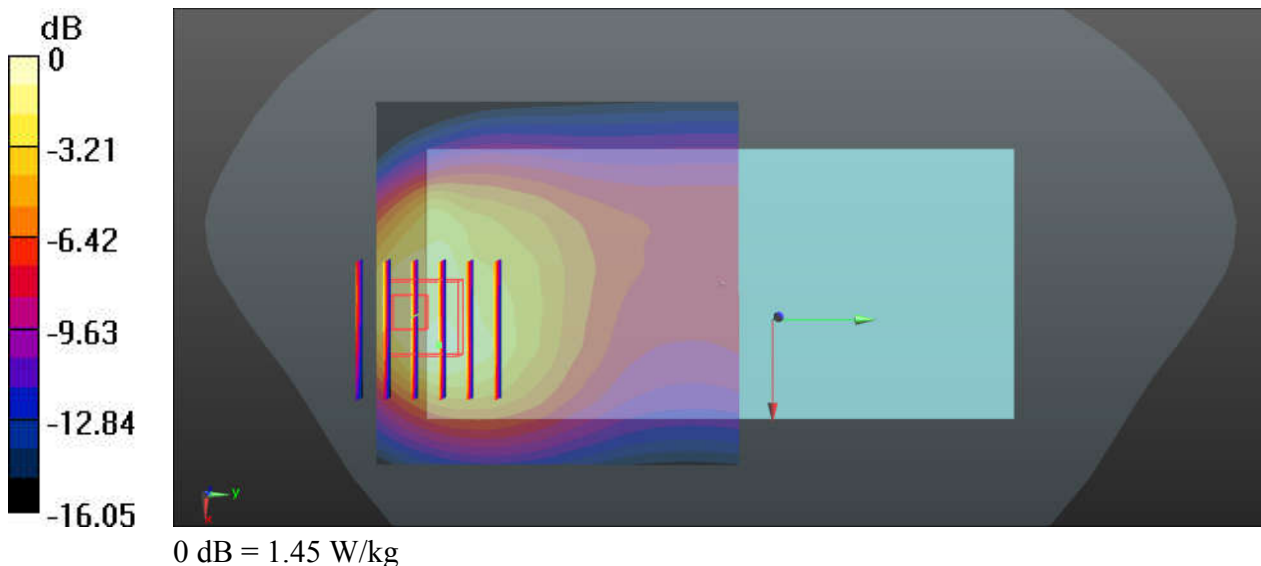
Communication System: UID 0, CDMA2000 (0); Frequency: 820.5 MHz; Duty Cycle: 1:1
Medium: HSL_835_200829 Medium parameters used: $f = 820.5$ MHz; $\sigma = 0.892$ S/m; $\epsilon_r = 41.341$;
 $\rho = 1000$ kg/m³
Ambient Temperature : 23.4 °C; Liquid Temperature : 22.6 °C

DASY5 Configuration:

- Probe: EX3DV4 - SN7576; ConvF(10.45, 10.45, 10.45); Calibrated: 2020.01.22;
- Sensor-Surface: 2mm (Mechanical Surface Detection)
- Electronics: DAE3 Sn528; Calibrated: 2020.03.16
- Phantom: SAM (Front) with CRP v5.0; Type: QD000P40CD; Serial: TP:1795
- Measurement SW: DASY52, Version 52.8 (8); SEMCAD X Version 14.6.10 (7331)

Ch580/Area Scan (71x71x1): Interpolated grid: dx=1.500 mm, dy=1.500 mm
Maximum value of SAR (interpolated) = 1.26 W/kg

Ch580/Zoom Scan (6x6x7)/Cube 0: Measurement grid: dx=8mm, dy=8mm, dz=5mm
Reference Value = 16.75 V/m; Power Drift = 0.08 dB
Peak SAR (extrapolated) = 2.25 W/kg
SAR(1 g) = 1.08 W/kg; SAR(10 g) = 0.579 W/kg
Maximum value of SAR (measured) = 1.45 W/kg



31_CDMA2000 BC1_RTAP 153.6Kbps_Bottom Side_5mm_Ch600

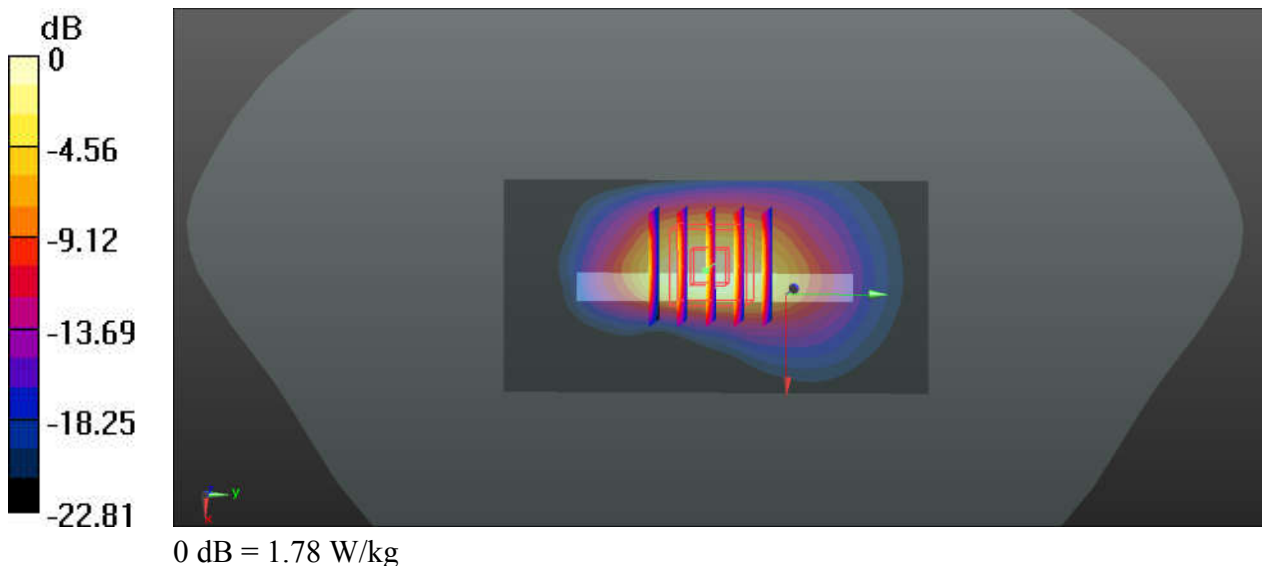
Communication System: UID 0, CDMA2000 (0); Frequency: 1880 MHz; Duty Cycle: 1:1
Medium: HSL_1900_200903 Medium parameters used: $f = 1880$ MHz; $\sigma = 1.428$ S/m; $\epsilon_r = 39.095$;
 $\rho = 1000$ kg/m³
Ambient Temperature : 23.4 °C; Liquid Temperature : 22.7 °C

DASY5 Configuration:

- Probe: EX3DV4 - SN7576; ConvF(8.58, 8.58, 8.58); Calibrated: 2020.01.22;
- Sensor-Surface: 2mm (Mechanical Surface Detection)
- Electronics: DAE3 Sn528; Calibrated: 2020.03.16
- Phantom: SAM (Front) with CRP v5.0; Type: QD000P40CD; Serial: TP:1795
- Measurement SW: DASY52, Version 52.8 (8); SEMCAD X Version 14.6.10 (7331)

Ch600/Area Scan (41x81x1): Interpolated grid: dx=1.500 mm, dy=1.500 mm
Maximum value of SAR (interpolated) = 1.88 W/kg

Ch600/Zoom Scan (5x5x7)/Cube 0: Measurement grid: dx=8mm, dy=8mm, dz=5mm
Reference Value = 1.975 V/m; Power Drift = 0.11 dB
Peak SAR (extrapolated) = 2.32 W/kg
SAR(1 g) = 1.14 W/kg; SAR(10 g) = 0.510 W/kg
Maximum value of SAR (measured) = 1.78 W/kg



32_LTE Band 71_20M_QPSK_1_0_Back_5mm_Ch133322

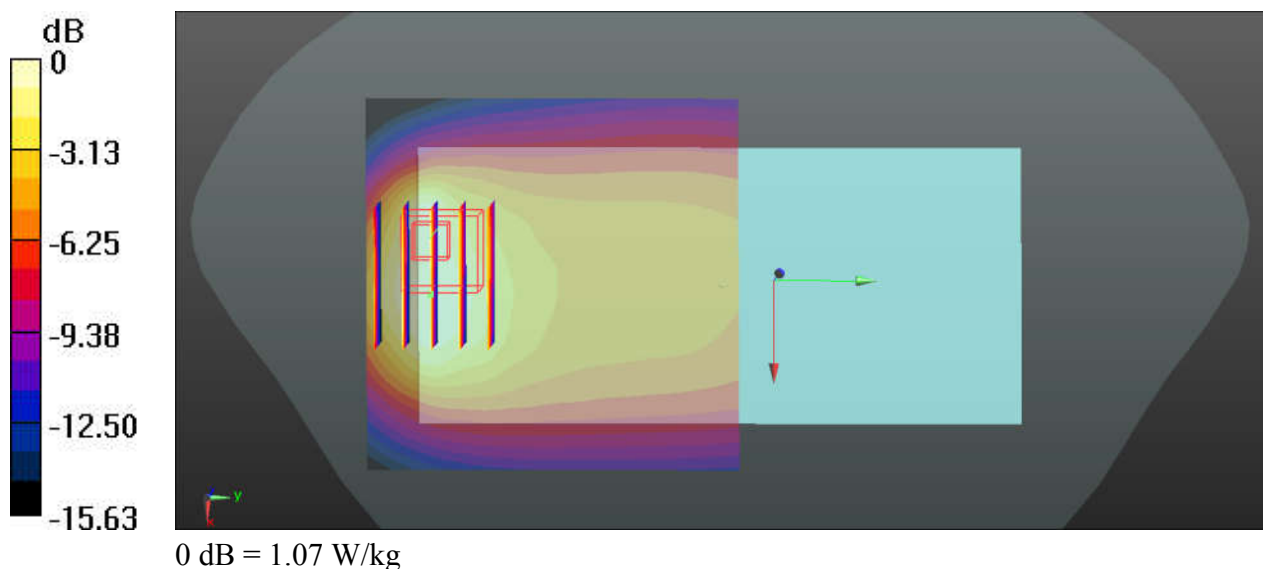
Communication System: UID 0, LTE (0); Frequency: 683 MHz; Duty Cycle: 1:1
 Medium: HSL_750_200820 Medium parameters used: $f = 683 \text{ MHz}$; $\sigma = 0.848 \text{ S/m}$; $\epsilon_r = 42.096$; $\rho = 1000 \text{ kg/m}^3$
 Ambient Temperature : $23.4 \text{ }^\circ\text{C}$; Liquid Temperature : $22.5 \text{ }^\circ\text{C}$

DASY5 Configuration:

- Probe: EX3DV4 - SN7576; ConvF(10.71, 10.71, 10.71); Calibrated: 2020.01.22;
- Sensor-Surface: 2mm (Mechanical Surface Detection)
- Electronics: DAE3 Sn528; Calibrated: 2020.03.16
- Phantom: SAM (Front) with CRP v5.0; Type: QD000P40CD; Serial: TP:1795
- Measurement SW: DASY52, Version 52.8 (8); SEMCAD X Version 14.6.10 (7331)

Ch133322/Area Scan (71x71x1): Interpolated grid: $dx=1.500 \text{ mm}$, $dy=1.500 \text{ mm}$
 Maximum value of SAR (interpolated) = 1.19 W/kg

Ch133322/Zoom Scan (6x5x7)/Cube 0: Measurement grid: $dx=8\text{mm}$, $dy=8\text{mm}$, $dz=5\text{mm}$
 Reference Value = 20.92 V/m ; Power Drift = -0.02 dB
 Peak SAR (extrapolated) = 1.53 W/kg
SAR(1 g) = 0.711 W/kg ; SAR(10 g) = 0.413 W/kg
 Maximum value of SAR (measured) = 1.07 W/kg



33_LTE Band 12_10M_QPSK_1_49_Back_5mm_Ch23095

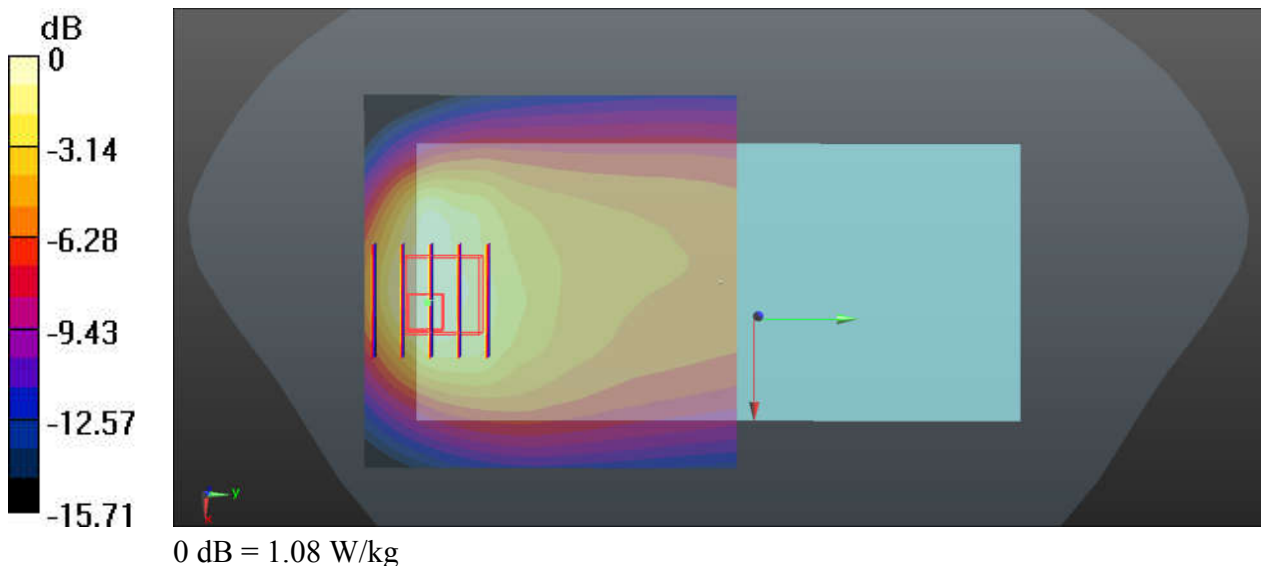
Communication System: UID 0, LTE (0); Frequency: 707.5 MHz; Duty Cycle: 1:1
Medium: HSL_750_200820 Medium parameters used: $f = 707.5$ MHz; $\sigma = 0.859$ S/m; $\epsilon_r = 41.717$;
 $\rho = 1000$ kg/m³
Ambient Temperature : 23.4 °C; Liquid Temperature : 22.5 °C

DASY5 Configuration:

- Probe: EX3DV4 - SN7576; ConvF(10.71, 10.71, 10.71); Calibrated: 2020.01.22;
- Sensor-Surface: 2mm (Mechanical Surface Detection)
- Electronics: DAE3 Sn528; Calibrated: 2020.03.16
- Phantom: SAM (Front) with CRP v5.0; Type: QD000P40CD; Serial: TP:1795
- Measurement SW: DASY52, Version 52.8 (8); SEMCAD X Version 14.6.10 (7331)

Ch23095/Area Scan (71x71x1): Interpolated grid: dx=1.500 mm, dy=1.500 mm
Maximum value of SAR (interpolated) = 1.28 W/kg

Ch23095/Zoom Scan (5x5x7)/Cube 0: Measurement grid: dx=8mm, dy=8mm, dz=5mm
Reference Value = 19.44 V/m; Power Drift = 0.01 dB
Peak SAR (extrapolated) = 1.59 W/kg
SAR(1 g) = 0.710 W/kg; SAR(10 g) = 0.395 W/kg
Maximum value of SAR (measured) = 1.08 W/kg



34_LTE Band 13_10M_QPSK_1_25_Back_5mm_Ch23230

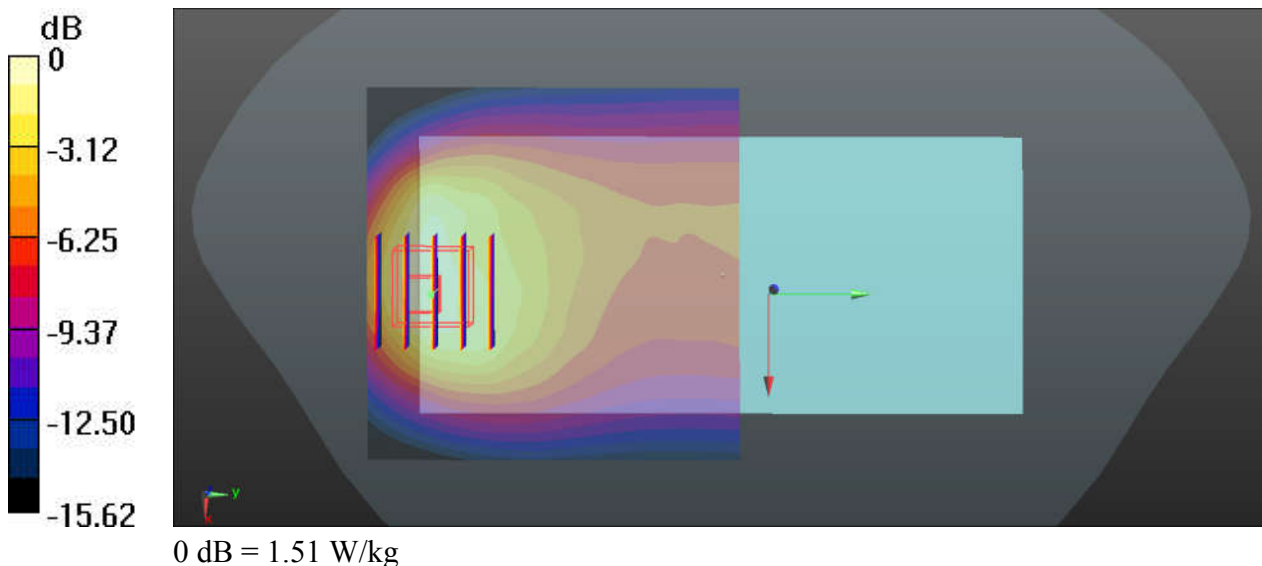
Communication System: UID 0, LTE (0); Frequency: 782 MHz; Duty Cycle: 1:1
Medium: HSL_750_200820 Medium parameters used: $f = 782$ MHz; $\sigma = 0.901$ S/m; $\epsilon_r = 40.08$; $\rho = 1000$ kg/m³
Ambient Temperature : 23.4 °C; Liquid Temperature : 22.5 °C

DASY5 Configuration:

- Probe: EX3DV4 - SN7576; ConvF(10.71, 10.71, 10.71); Calibrated: 2020.01.22;
- Sensor-Surface: 2mm (Mechanical Surface Detection)
- Electronics: DAE3 Sn528; Calibrated: 2020.03.16
- Phantom: SAM (Front) with CRP v5.0; Type: QD000P40CD; Serial: TP:1795
- Measurement SW: DASY52, Version 52.8 (8); SEMCAD X Version 14.6.10 (7331)

Ch23230/Area Scan (71x71x1): Interpolated grid: dx=1.500 mm, dy=1.500 mm
Maximum value of SAR (interpolated) = 1.74 W/kg

Ch23230/Zoom Scan (5x5x7)/Cube 0: Measurement grid: dx=8mm, dy=8mm, dz=5mm
Reference Value = 20.17 V/m; Power Drift = 0.04 dB
Peak SAR (extrapolated) = 2.14 W/kg
SAR(1 g) = 1 W/kg; SAR(10 g) = 0.543 W/kg
Maximum value of SAR (measured) = 1.51 W/kg



35_LTE Band 14_10M_QPSK_1_49_Back_5mm_Ch23330

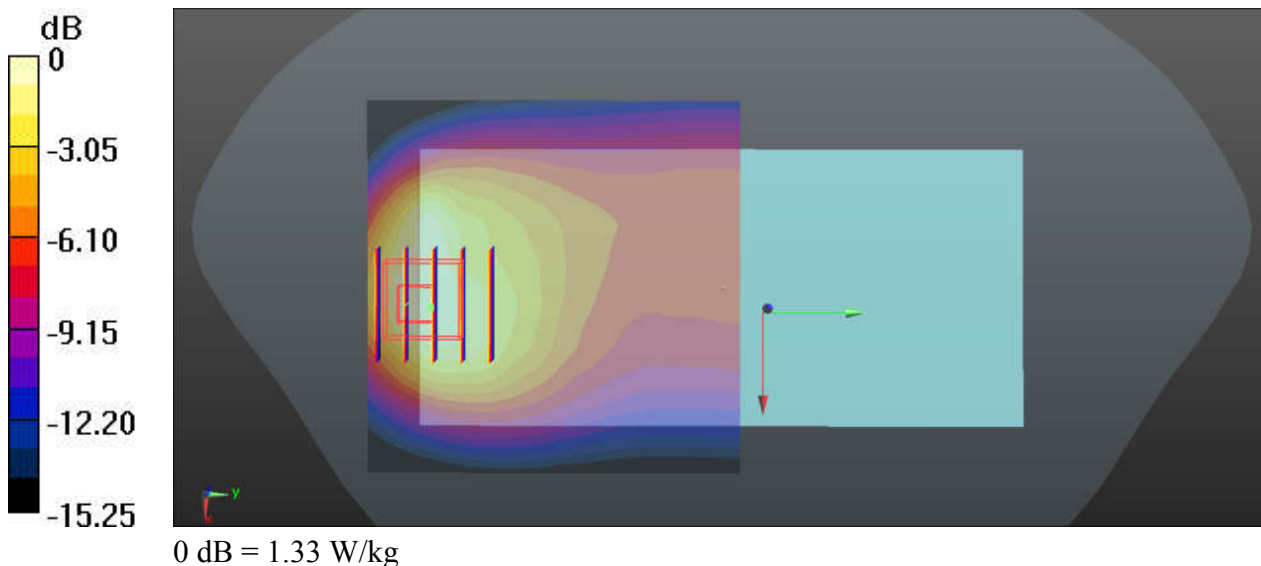
Communication System: UID 0, LTE (0); Frequency: 793 MHz; Duty Cycle: 1:1
Medium: HSL_750_200830 Medium parameters used: $f = 793$ MHz; $\sigma = 0.918$ S/m; $\epsilon_r = 40.645$; $\rho = 1000$ kg/m³
Ambient Temperature : 23.4 °C; Liquid Temperature : 22.4 °C

DASY5 Configuration:

- Probe: EX3DV4 - SN7576; ConvF(10.71, 10.71, 10.71); Calibrated: 2020.01.22;
- Sensor-Surface: 2mm (Mechanical Surface Detection)
- Electronics: DAE3 Sn528; Calibrated: 2020.03.16
- Phantom: SAM (Front) with CRP v5.0; Type: QD000P40CD; Serial: TP:1795
- Measurement SW: DASY52, Version 52.8 (8); SEMCAD X Version 14.6.10 (7331)

Ch23330/Area Scan (71x71x1): Interpolated grid: dx=1.500 mm, dy=1.500 mm
Maximum value of SAR (interpolated) = 1.61 W/kg

Ch23330/Zoom Scan (5x5x7)/Cube 0: Measurement grid: dx=8mm, dy=8mm, dz=5mm
Reference Value = 18.27 V/m; Power Drift = 0.07 dB
Peak SAR (extrapolated) = 1.98 W/kg
SAR(1 g) = 0.936 W/kg; SAR(10 g) = 0.506 W/kg
Maximum value of SAR (measured) = 1.33 W/kg



36_LTE Band 5_10M_QPSK_1_49_Back_5mm_Ch20525

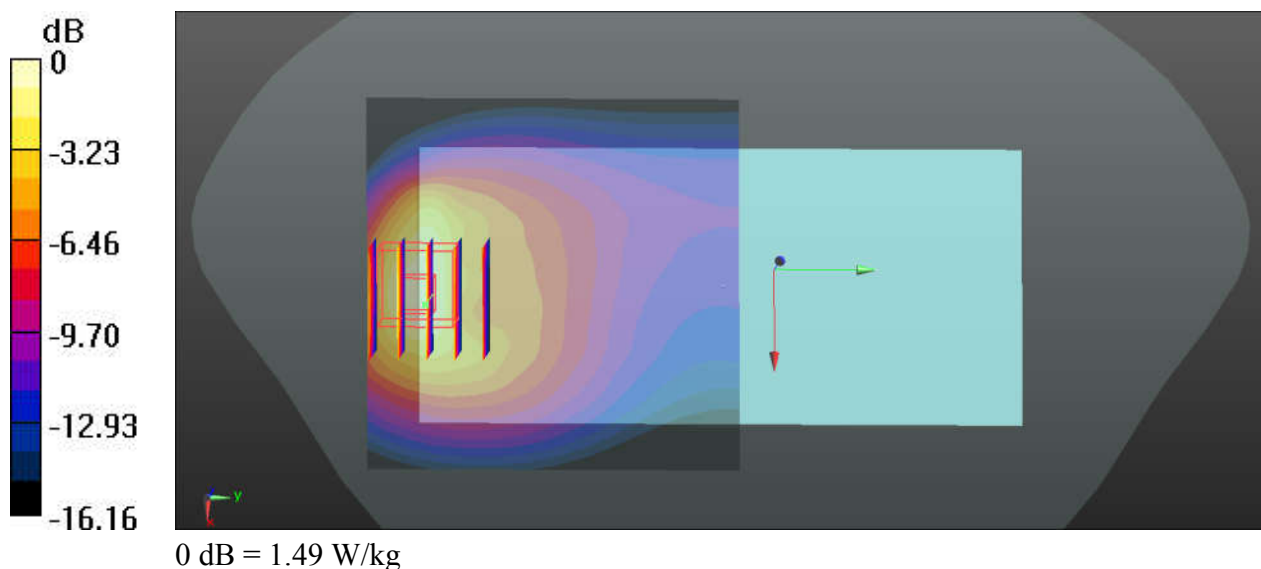
Communication System: UID 0, LTE (0); Frequency: 836.5 MHz; Duty Cycle: 1:1
Medium: HSL_835_200829 Medium parameters used: $f = 836.5$ MHz; $\sigma = 0.905$ S/m; $\epsilon_r = 41.197$;
 $\rho = 1000$ kg/m³
Ambient Temperature : 23.4 °C; Liquid Temperature : 22.6 °C

DASY5 Configuration:

- Probe: EX3DV4 - SN7576; ConvF(10.45, 10.45, 10.45); Calibrated: 2020.01.22;
- Sensor-Surface: 2mm (Mechanical Surface Detection)
- Electronics: DAE3 Sn528; Calibrated: 2020.03.16
- Phantom: SAM (Front) with CRP v5.0; Type: QD000P40CD; Serial: TP:1795
- Measurement SW: DASY52, Version 52.8 (8); SEMCAD X Version 14.6.10 (7331)

Ch20525/Area Scan (71x71x1): Interpolated grid: dx=1.500 mm, dy=1.500 mm
Maximum value of SAR (interpolated) = 1.48 W/kg

Ch20525/Zoom Scan (5x5x7)/Cube 0: Measurement grid: dx=8mm, dy=8mm, dz=5mm
Reference Value = 11.18 V/m; Power Drift = 0.06 dB
Peak SAR (extrapolated) = 2.00 W/kg
SAR(1 g) = 0.973 W/kg; SAR(10 g) = 0.503 W/kg
Maximum value of SAR (measured) = 1.49 W/kg



37_LTE Band 26_15M_QPSK_1_37_Back_5mm_Ch26965

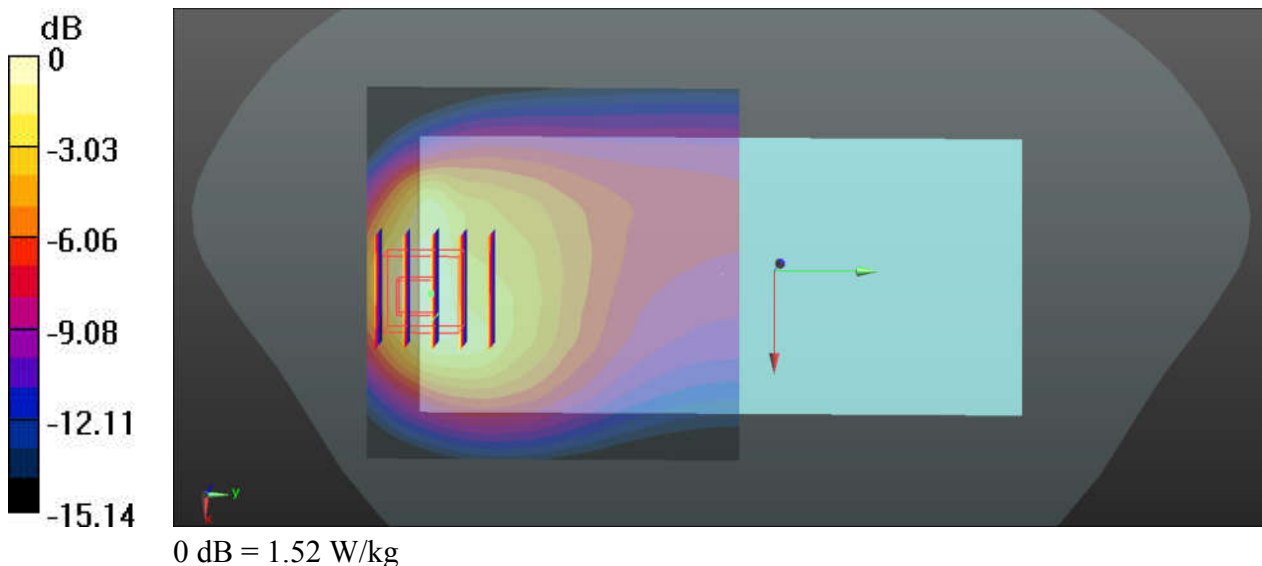
Communication System: UID 0, LTE (0); Frequency: 841.5 MHz; Duty Cycle: 1:1
Medium: HSL_835_200829 Medium parameters used: $f = 841.5$ MHz; $\sigma = 0.91$ S/m; $\epsilon_r = 41.15$; $\rho = 1000$ kg/m³
Ambient Temperature : 23.4 °C; Liquid Temperature : 22.6 °C

DASY5 Configuration:

- Probe: EX3DV4 - SN7576; ConvF(10.45, 10.45, 10.45); Calibrated: 2020.01.22;
- Sensor-Surface: 2mm (Mechanical Surface Detection)
- Electronics: DAE3 Sn528; Calibrated: 2020.03.16
- Phantom: SAM (Front) with CRP v5.0; Type: QD000P40CD; Serial: TP:1795
- Measurement SW: DASY52, Version 52.8 (8); SEMCAD X Version 14.6.10 (7331)

Ch26965/Area Scan (71x71x1): Interpolated grid: dx=1.500 mm, dy=1.500 mm
Maximum value of SAR (interpolated) = 1.74 W/kg

Ch26965/Zoom Scan (5x5x7)/Cube 0: Measurement grid: dx=8mm, dy=8mm, dz=5mm
Reference Value = 16.22 V/m; Power Drift = 0.08 dB
Peak SAR (extrapolated) = 2.15 W/kg
SAR(1 g) = 1.05 W/kg; SAR(10 g) = 0.559 W/kg
Maximum value of SAR (measured) = 1.52 W/kg



38_LTE Band 66_20M_QPSK_1_99_Back_5mm_Ch132322

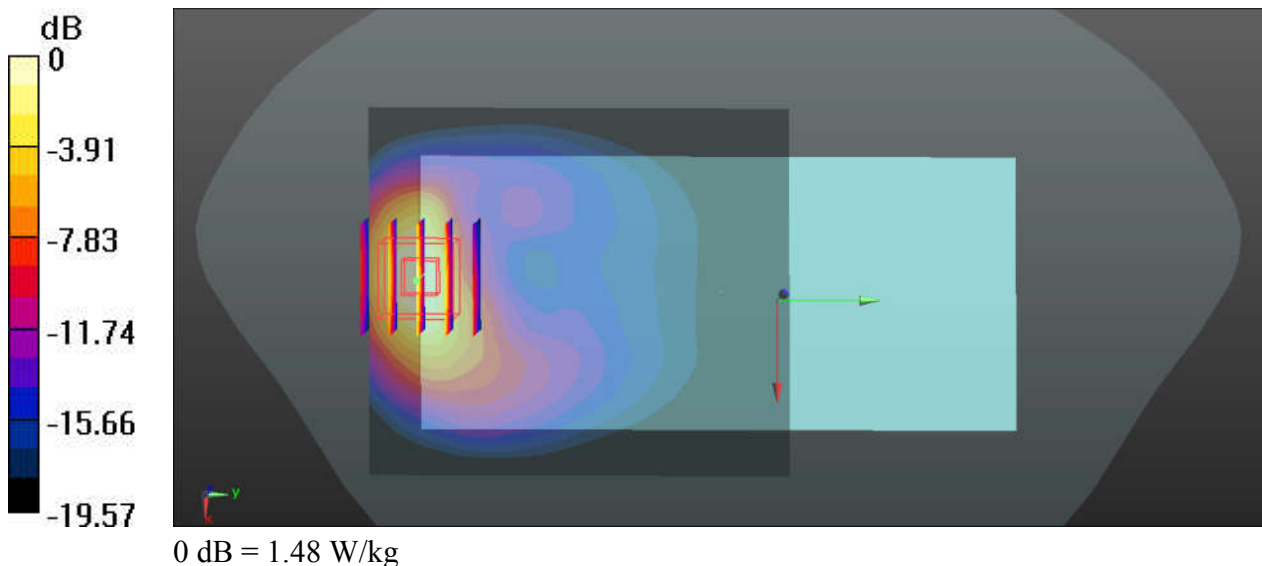
Communication System: UID 0, LTE (0); Frequency: 1745 MHz; Duty Cycle: 1:1
Medium: HSL_1750_200901 Medium parameters used: $f = 1745$ MHz; $\sigma = 1.401$ S/m; $\epsilon_r = 41.539$;
 $\rho = 1000$ kg/m³
Ambient Temperature : 23.5 °C ; Liquid Temperature : 22.4 °C

DASY5 Configuration:

- Probe: EX3DV4 - SN7576; ConvF(8.88, 8.88, 8.88); Calibrated: 2020.01.22;
- Sensor-Surface: 2mm (Mechanical Surface Detection)
- Electronics: DAE3 Sn528; Calibrated: 2020.03.16
- Phantom: SAM (Front) with CRP v5.0; Type: QD000P40CD; Serial: TP:1795
- Measurement SW: DASY52, Version 52.8 (8); SEMCAD X Version 14.6.10 (7331)

Ch132322/Area Scan (71x81x1): Interpolated grid: dx=1.500 mm, dy=1.500 mm
Maximum value of SAR (interpolated) = 1.56 W/kg

Ch132322/Zoom Scan (5x5x7)/Cube 0: Measurement grid: dx=8mm, dy=8mm, dz=5mm
Reference Value = 3.662 V/m; Power Drift = 0.09 dB
Peak SAR (extrapolated) = 1.86 W/kg
SAR(1 g) = 1.04 W/kg; SAR(10 g) = 0.515 W/kg
Maximum value of SAR (measured) = 1.48 W/kg



39_LTE Band 25_20M_QPSK_1_49_Back_5mm_Ch26140

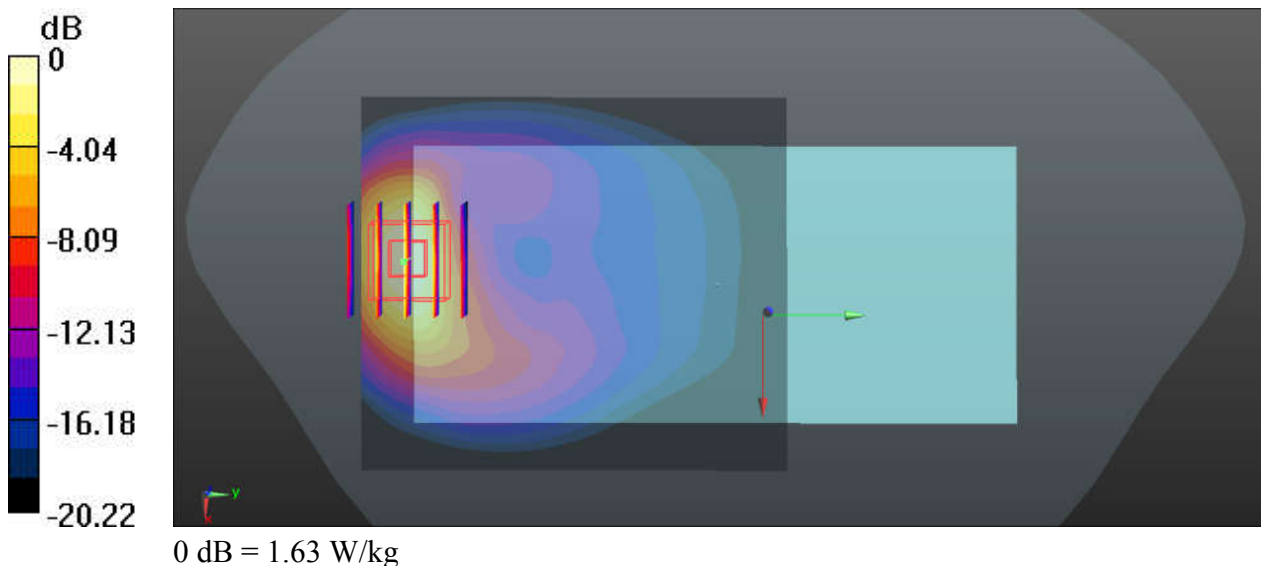
Communication System: UID 0, LTE (0); Frequency: 1860 MHz; Duty Cycle: 1:1
Medium: HSL_1900_200903 Medium parameters used: $f = 1860$ MHz; $\sigma = 1.405$ S/m; $\epsilon_r = 39.176$;
 $\rho = 1000$ kg/m³
Ambient Temperature : 23.4 °C ; Liquid Temperature : 22.7 °C

DASY5 Configuration:

- Probe: EX3DV4 - SN7576; ConvF(8.58, 8.58, 8.58); Calibrated: 2020.01.22;
- Sensor-Surface: 2mm (Mechanical Surface Detection)
- Electronics: DAE3 Sn528; Calibrated: 2020.03.16
- Phantom: SAM (Front) with CRP v5.0; Type: QD000P40CD; Serial: TP:1795
- Measurement SW: DASY52, Version 52.8 (8); SEMCAD X Version 14.6.10 (7331)

Ch26140/Area Scan (71x81x1): Interpolated grid: dx=1.500 mm, dy=1.500 mm
Maximum value of SAR (interpolated) = 1.66 W/kg

Ch26140/Zoom Scan (5x5x7)/Cube 0: Measurement grid: dx=8mm, dy=8mm, dz=5mm
Reference Value = 1.360 V/m; Power Drift = 0.02 dB
Peak SAR (extrapolated) = 2.07 W/kg
SAR(1 g) = 1.13 W/kg; SAR(10 g) = 0.551 W/kg
Maximum value of SAR (measured) = 1.63 W/kg



40_LTE Band 7_20M_QPSK_50_24_Back_5mm_Ch21100

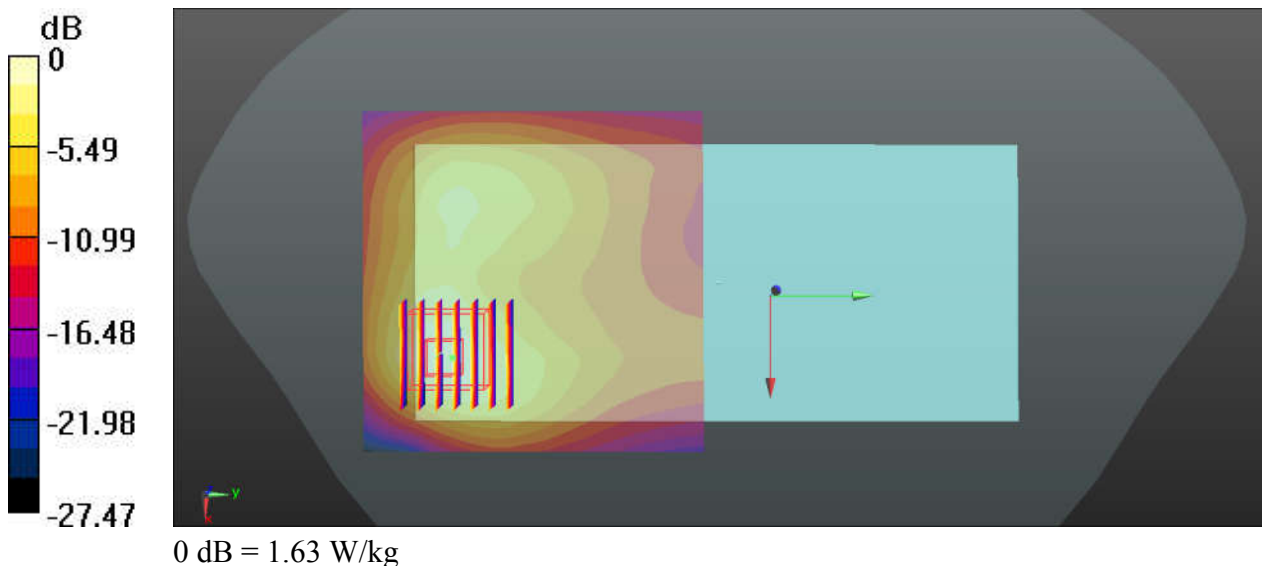
Communication System: UID 0, LTE (0); Frequency: 2535 MHz; Duty Cycle: 1:1
Medium: HSL_2600_200905 Medium parameters used: $f = 2535$ MHz; $\sigma = 1.973$ S/m; $\epsilon_r = 38.013$;
 $\rho = 1000$ kg/m³
Ambient Temperature : 23.5 °C ; Liquid Temperature : 22.4 °C

DASY5 Configuration:

- Probe: EX3DV4 - SN7576; ConvF(7.47, 7.47, 7.47); Calibrated: 2020.01.22;
- Sensor-Surface: 2mm (Mechanical Surface Detection)
- Electronics: DAE3 Sn528; Calibrated: 2020.03.16
- Phantom: SAM (Front) with CRP v5.0; Type: QD000P40CD; Serial: TP:1795
- Measurement SW: DASY52, Version 52.8 (8); SEMCAD X Version 14.6.10 (7331)

Ch21100/Area Scan (81x81x1): Interpolated grid: dx=1.200 mm, dy=1.200 mm
Maximum value of SAR (interpolated) = 1.69 W/kg

Ch21100/Zoom Scan (7x7x7)/Cube 0: Measurement grid: dx=5mm, dy=5mm, dz=5mm
Reference Value = 6.997 V/m; Power Drift = -0.06 dB
Peak SAR (extrapolated) = 2.35 W/kg
SAR(1 g) = 1.03 W/kg; SAR(10 g) = 0.464 W/kg
Maximum value of SAR (measured) = 1.63 W/kg



41_LTE Band 41_20M_QPSK_1_0_Back_5mm_Ch40620

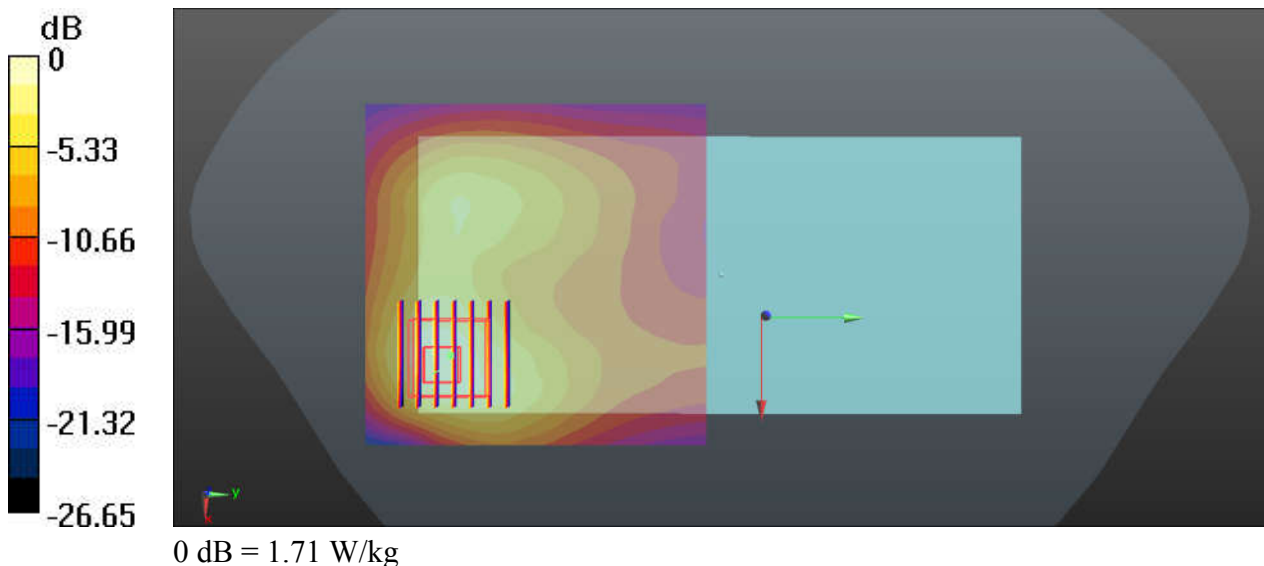
Communication System: UID 0, LTE (0); Frequency: 2593 MHz; Duty Cycle: 1:1.59
Medium: HSL_2600_200905 Medium parameters used: $f = 2593$ MHz; $\sigma = 2.039$ S/m; $\epsilon_r = 37.777$;
 $\rho = 1000$ kg/m³
Ambient Temperature : 23.5 °C ; Liquid Temperature : 22.4 °C

DASY5 Configuration:

- Probe: EX3DV4 - SN7576; ConvF(7.47, 7.47, 7.47); Calibrated: 2020.01.22;
- Sensor-Surface: 2mm (Mechanical Surface Detection)
- Electronics: DAE3 Sn528; Calibrated: 2020.03.16
- Phantom: SAM (Front) with CRP v5.0; Type: QD000P40CD; Serial: TP:1795
- Measurement SW: DASY52, Version 52.8 (8); SEMCAD X Version 14.6.10 (7331)

Ch40620/Area Scan (81x81x1): Interpolated grid: dx=1.200 mm, dy=1.200 mm
Maximum value of SAR (interpolated) = 1.65 W/kg

Ch40620/Zoom Scan (7x7x7)/Cube 0: Measurement grid: dx=5mm, dy=5mm, dz=5mm
Reference Value = 6.198 V/m; Power Drift = -0.09 dB
Peak SAR (extrapolated) = 2.54 W/kg
SAR(1 g) = 1.11 W/kg; SAR(10 g) = 0.497 W/kg
Maximum value of SAR (measured) = 1.71 W/kg



42_Bluetooth_DH5 1Mbps_Back_5mm_Ch78

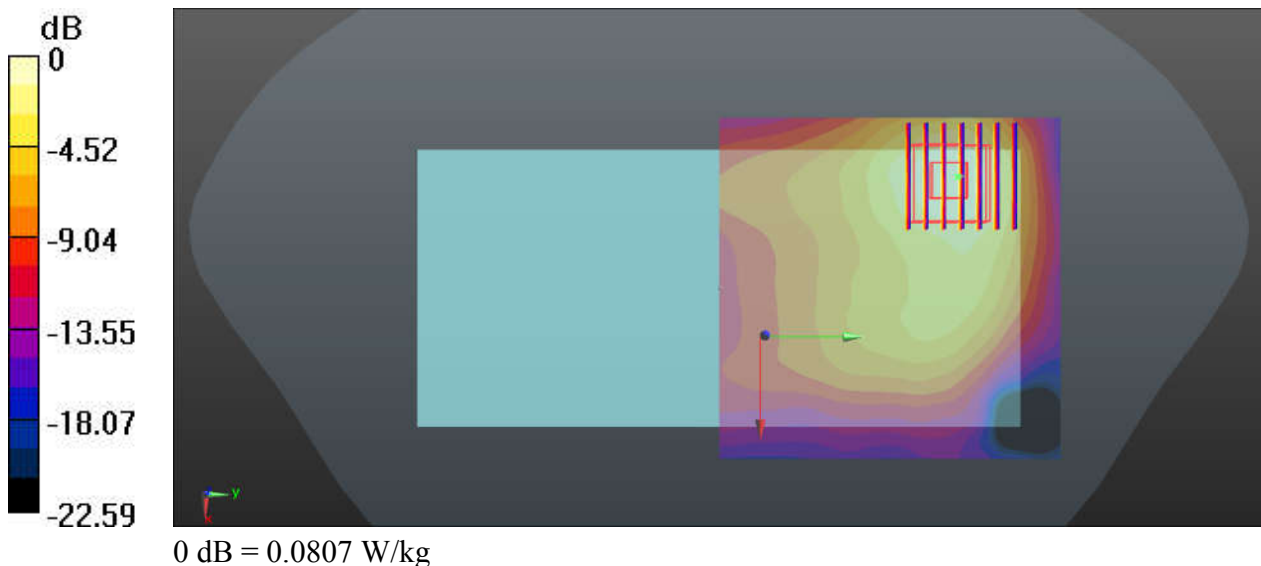
Communication System: UID 0, Bluetooth (0); Frequency: 2480 MHz; Duty Cycle: 1:1.304
Medium: HSL_2450_200824 Medium parameters used: $f = 2480$ MHz; $\sigma = 1.863$ S/m; $\epsilon_r = 39.958$;
 $\rho = 1000$ kg/m³
Ambient Temperature : 23.6 °C ; Liquid Temperature : 22.7 °C

DASY5 Configuration:

- Probe: EX3DV4 - SN7576; ConvF(7.76, 7.76, 7.76); Calibrated: 2020.01.22;
- Sensor-Surface: 2mm (Mechanical Surface Detection)
- Electronics: DAE3 Sn528; Calibrated: 2020.03.16
- Phantom: SAM (Front) with CRP v5.0; Type: QD000P40CD; Serial: TP:1795
- Measurement SW: DASY52, Version 52.8 (8); SEMCAD X Version 14.6.10 (7331)

Ch78/Area Scan (81x81x1): Interpolated grid: dx=1.200 mm, dy=1.200 mm
Maximum value of SAR (interpolated) = 0.0816 W/kg

Ch78/Zoom Scan (7x7x7)/Cube 0: Measurement grid: dx=5mm, dy=5mm, dz=5mm
Reference Value = 1.660 V/m; Power Drift = 0.01 dB
Peak SAR (extrapolated) = 0.108 W/kg
SAR(1 g) = 0.055 W/kg; SAR(10 g) = 0.027 W/kg
Maximum value of SAR (measured) = 0.0807 W/kg



43_WLAN2.4GHz_802.11b 1Mbps_Back_5mm_Ch6

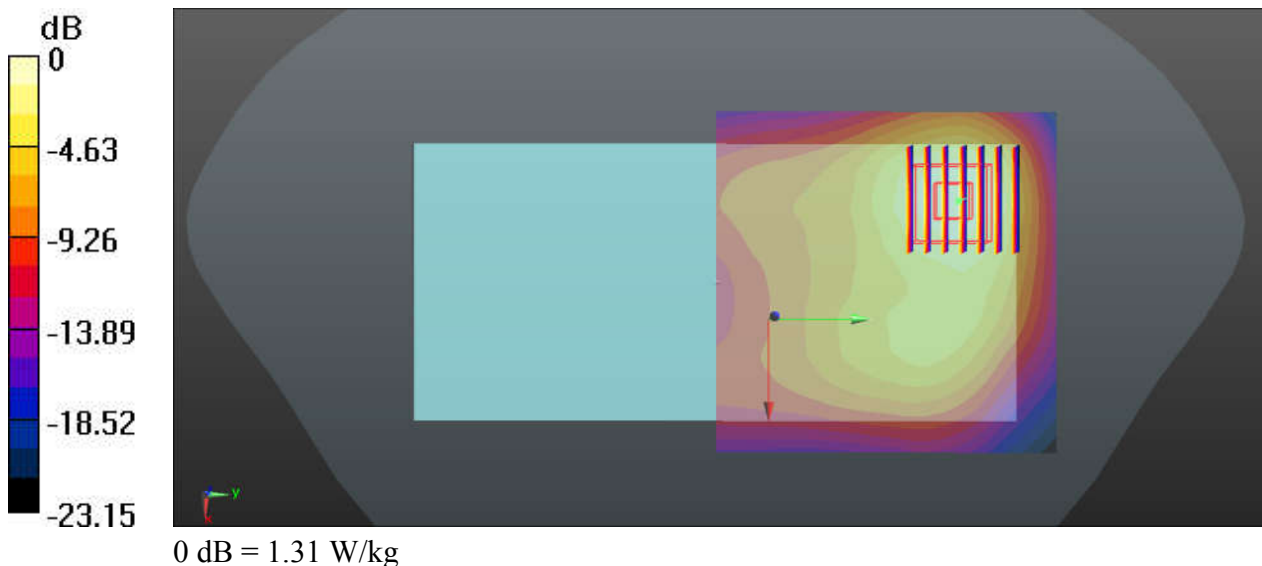
Communication System: UID 0, WIFI (0); Frequency: 2437 MHz; Duty Cycle: 1:1.01
Medium: HSL_2450_200824 Medium parameters used: $f = 2437$ MHz; $\sigma = 1.814$ S/m; $\epsilon_r = 40.127$;
 $\rho = 1000$ kg/m³
Ambient Temperature : 23.6 °C ; Liquid Temperature : 22.7 °C

DASY5 Configuration:

- Probe: EX3DV4 - SN7576; ConvF(7.76, 7.76, 7.76); Calibrated: 2020.01.22;
- Sensor-Surface: 2mm (Mechanical Surface Detection)
- Electronics: DAE3 Sn528; Calibrated: 2020.03.16
- Phantom: SAM (Front) with CRP v5.0; Type: QD000P40CD; Serial: TP:1795
- Measurement SW: DASY52, Version 52.8 (8); SEMCAD X Version 14.6.10 (7331)

Ch6/Area Scan (81x81x1): Interpolated grid: dx=1.200 mm, dy=1.200 mm
Maximum value of SAR (interpolated) = 1.37 W/kg

Ch6/Zoom Scan (7x7x7)/Cube 0: Measurement grid: dx=5mm, dy=5mm, dz=5mm
Reference Value = 7.235 V/m; Power Drift = 0.09 dB
Peak SAR (extrapolated) = 1.75 W/kg
SAR(1 g) = 0.897 W/kg; SAR(10 g) = 0.441 W/kg
Maximum value of SAR (measured) = 1.31 W/kg



44_WLAN5GHz_802.11n-HT40 MCS0_Back_5mm_Ch38

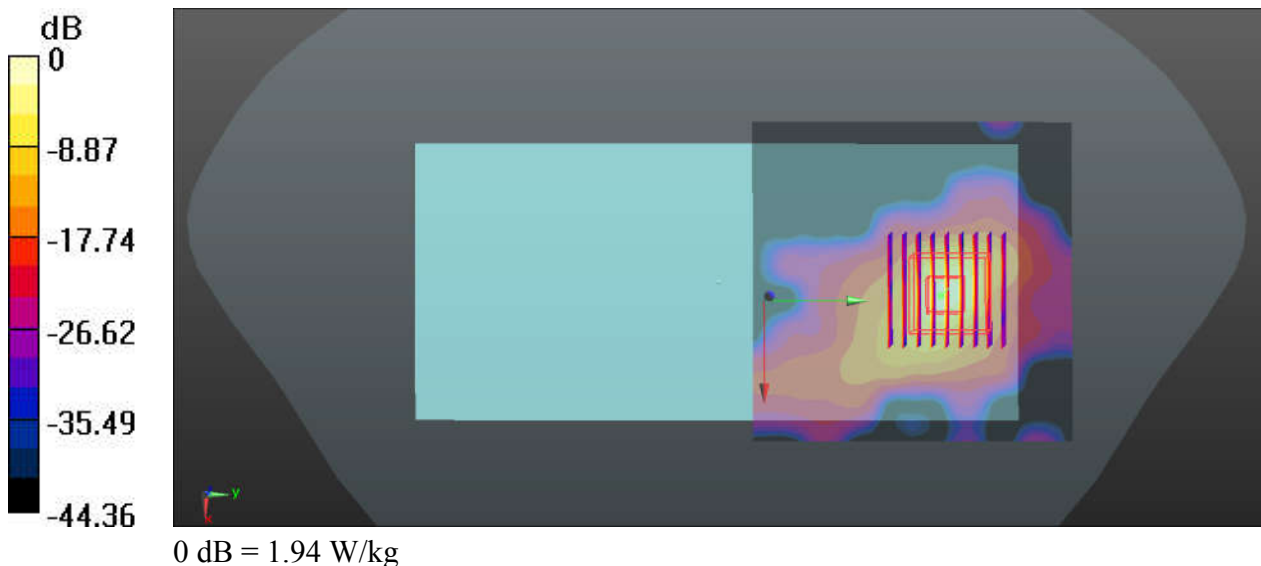
Communication System: UID 0, WIFI (0); Frequency: 5190 MHz; Duty Cycle: 1:1.051
Medium: HSL_5250_200826 Medium parameters used: $f = 5190$ MHz; $\sigma = 4.675$ S/m; $\epsilon_r = 37.026$;
 $\rho = 1000$ kg/m³
Ambient Temperature : 23.4 °C; Liquid Temperature : 22.8 °C

DASY5 Configuration:

- Probe: EX3DV4 - SN7576; ConvF(5.2, 5.2, 5.2); Calibrated: 2020.01.22
- Sensor-Surface: 1.4mm (Mechanical Surface Detection)
- Electronics: DAE3 Sn528; Calibrated: 2020.03.16
- Phantom: SAM (Front) with CRP v5.0; Type: QD000P40CD; Serial: TP:1795
- Measurement SW: DASY52, Version 52.8 (8); SEMCAD X Version 14.6.10 (7331)

Ch38/Area Scan (91x91x1): Interpolated grid: dx=1.000 mm, dy=1.000 mm
Maximum value of SAR (interpolated) = 1.37 W/kg

Ch38/Zoom Scan (9x9x7)/Cube 0: Measurement grid: dx=4mm, dy=4mm, dz=1.4mm
Reference Value = 0.4180 V/m; Power Drift = 0.01 dB
Peak SAR (extrapolated) = 3.11 W/kg
SAR(1 g) = 0.692 W/kg; SAR(10 g) = 0.151 W/kg
Maximum value of SAR (measured) = 1.94 W/kg



45_WLAN5GHz_802.11a 6Mbps_Back_5mm_Ch165

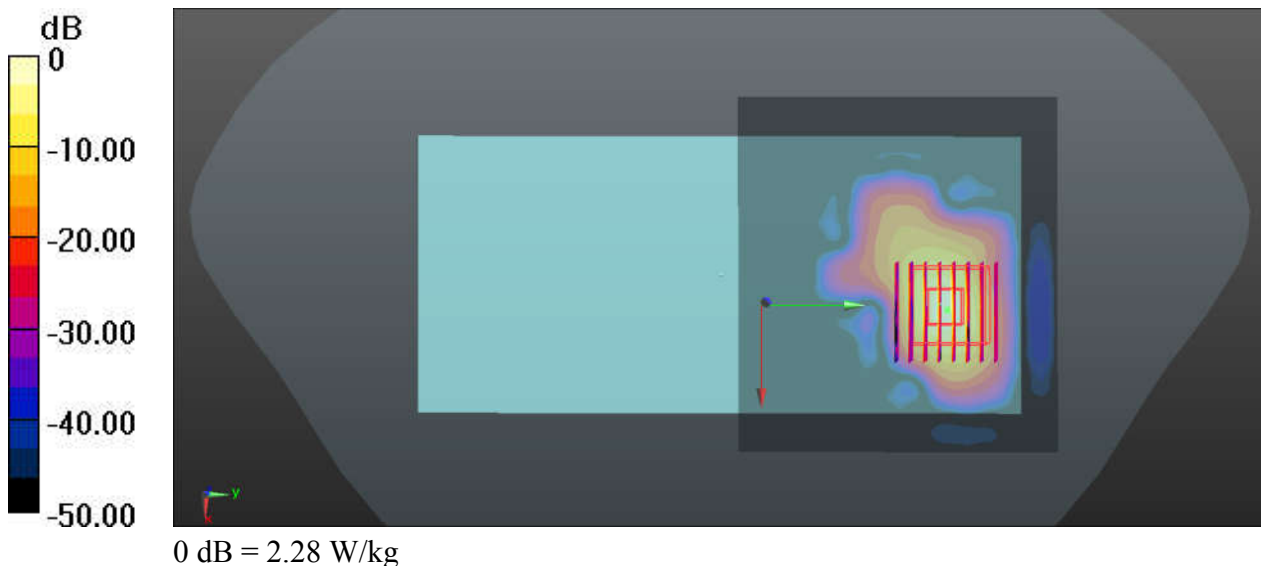
Communication System: UID 0, WIFI (0); Frequency: 5825 MHz; Duty Cycle: 1:1.019
Medium: HSL_5750_200828 Medium parameters used: $f = 5825$ MHz; $\sigma = 5.466$ S/m; $\epsilon_r = 35.646$;
 $\rho = 1000$ kg/m³
Ambient Temperature : 23.6 °C; Liquid Temperature : 22.8 °C

DASY5 Configuration:

- Probe: EX3DV4 - SN7576; ConvF(4.83, 4.83, 4.83); Calibrated: 2020.01.22
- Sensor-Surface: 1.4mm (Mechanical Surface Detection)
- Electronics: DAE3 Sn528; Calibrated: 2020.03.16
- Phantom: SAM (Front) with CRP v5.0; Type: QD000P40CD; Serial: TP:1795
- Measurement SW: DASY52, Version 52.8 (8); SEMCAD X Version 14.6.10 (7331)

Ch165/Area Scan (101x91x1): Interpolated grid: dx=1.000 mm, dy=1.000 mm
Maximum value of SAR (interpolated) = 2.10 W/kg

Ch165/Zoom Scan (8x8x7)/Cube 0: Measurement grid: dx=4mm, dy=4mm, dz=1.4mm
Reference Value = 0.2120 V/m; Power Drift = -0.03 dB
Peak SAR (extrapolated) = 4.43 W/kg
SAR(1 g) = 0.789 W/kg; SAR(10 g) = 0.156 W/kg
Maximum value of SAR (measured) = 2.28 W/kg



46_GSM850_GPRS(2 Tx slots)_Back_5mm_Ch128

Communication System: UID 0, GPRS/EDGE10 (0); Frequency: 824.2 MHz; Duty Cycle: 1:4.15
Medium: HSL_835_200829 Medium parameters used: $f = 824.2$ MHz; $\sigma = 0.895$ S/m; $\epsilon_r = 41.309$;
 $\rho = 1000$ kg/m³
Ambient Temperature : 23.4 °C; Liquid Temperature : 22.6 °C

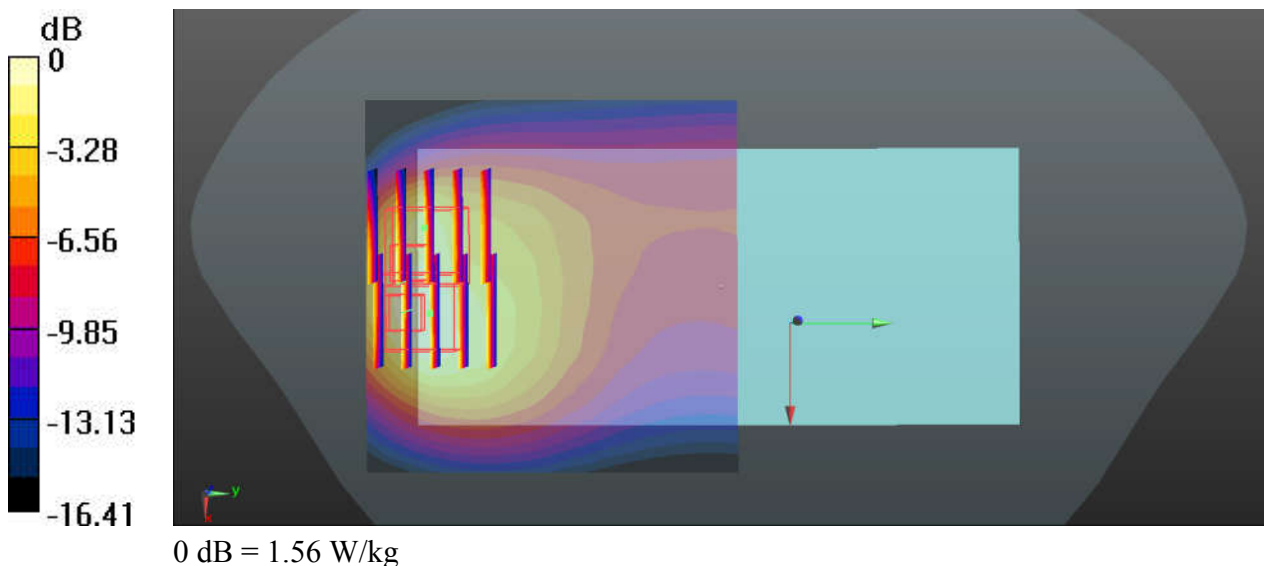
DASY5 Configuration:

- Probe: EX3DV4 - SN7576; ConvF(10.45, 10.45, 10.45); Calibrated: 2020.01.22;
- Sensor-Surface: 2mm (Mechanical Surface Detection)
- Electronics: DAE3 Sn528; Calibrated: 2020.03.16
- Phantom: SAM (Front) with CRP v5.0; Type: QD000P40CD; Serial: TP:1795
- Measurement SW: DASY52, Version 52.8 (8); SEMCAD X Version 14.6.10 (7331)

Ch128/Area Scan (71x71x1): Interpolated grid: dx=1.500 mm, dy=1.500 mm
Maximum value of SAR (interpolated) = 1.56 W/kg

Ch128/Zoom Scan (5x5x7)/Cube 0: Measurement grid: dx=8mm, dy=8mm, dz=5mm
Reference Value = 16.85 V/m; Power Drift = 0.08 dB
Peak SAR (extrapolated) = 2.17 W/kg
SAR(1 g) = 1.08 W/kg; SAR(10 g) = 0.591 W/kg
Maximum value of SAR (measured) = 1.64 W/kg

Ch128/Zoom Scan (5x5x7)/Cube 1: Measurement grid: dx=8mm, dy=8mm, dz=5mm
Reference Value = 16.85 V/m; Power Drift = 0.08 dB
Peak SAR (extrapolated) = 1.89 W/kg
SAR(1 g) = 1.08 W/kg; SAR(10 g) = 0.585 W/kg
Maximum value of SAR (measured) = 1.43 W/kg



47_GSM1900_GPRS(2 Tx slots)_Back_5mm_Ch810

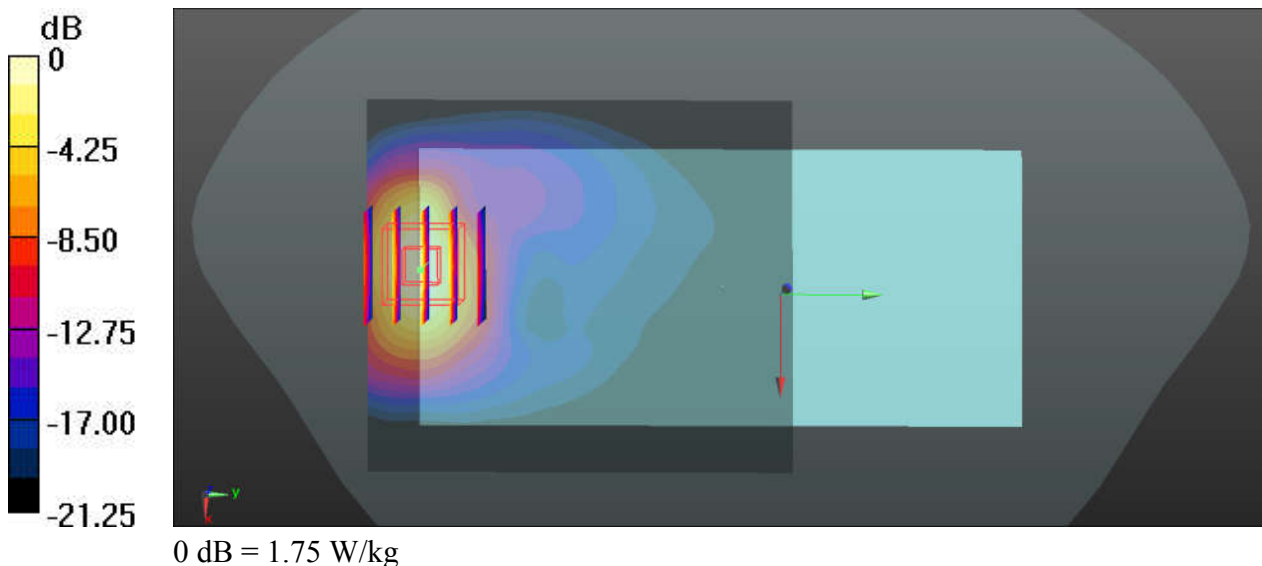
Communication System: UID 0, GPRS/EDGE10 (0); Frequency: 1909.8 MHz; Duty Cycle: 1:4.15
Medium: HSL_1900_200903 Medium parameters used: $f = 1910$ MHz; $\sigma = 1.458$ S/m; $\epsilon_r = 38.945$;
 $\rho = 1000$ kg/m³
Ambient Temperature : 23.4 °C; Liquid Temperature : 22.7 °C

DASY5 Configuration:

- Probe: EX3DV4 - SN7576; ConvF(8.58, 8.58, 8.58); Calibrated: 2020.01.22;
- Sensor-Surface: 2mm (Mechanical Surface Detection)
- Electronics: DAE3 Sn528; Calibrated: 2020.03.16
- Phantom: SAM (Front) with CRP v5.0; Type: QD000P40CD; Serial: TP:1795
- Measurement SW: DASY52, Version 52.8 (8); SEMCAD X Version 14.6.10 (7331)

Ch810/Area Scan (71x81x1): Interpolated grid: dx=1.500 mm, dy=1.500 mm
Maximum value of SAR (interpolated) = 1.79 W/kg

Ch810/Zoom Scan (5x5x7)/Cube 0: Measurement grid: dx=8mm, dy=8mm, dz=5mm
Reference Value = 1.049 V/m; Power Drift = 0.05 dB
Peak SAR (extrapolated) = 2.25 W/kg
SAR(1 g) = 1.2 W/kg; SAR(10 g) = 0.573 W/kg
Maximum value of SAR (measured) = 1.75 W/kg



48_WCDMA V_RMC 12.2Kbps_Back_5mm_Ch4233

Communication System: UID 0, UMTS (0); Frequency: 846.6 MHz; Duty Cycle: 1:1
Medium: HSL_835_200829 Medium parameters used: $f = 846.6$ MHz; $\sigma = 0.914$ S/m; $\epsilon_r = 41.098$;
 $\rho = 1000$ kg/m³
Ambient Temperature : 23.4 °C; Liquid Temperature : 22.6 °C

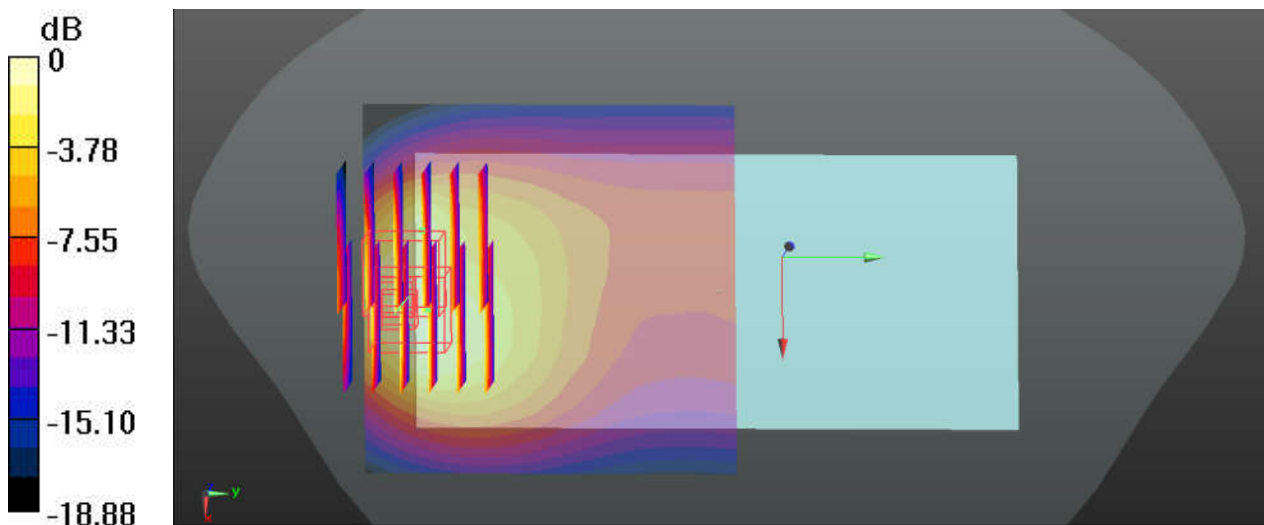
DASY5 Configuration:

- Probe: EX3DV4 - SN7576; ConvF(10.45, 10.45, 10.45); Calibrated: 2020.01.22;
- Sensor-Surface: 2mm (Mechanical Surface Detection)
- Electronics: DAE3 Sn528; Calibrated: 2020.03.16
- Phantom: SAM (Front) with CRP v5.0; Type: QD000P40CD; Serial: TP:1795
- Measurement SW: DASY52, Version 52.8 (8); SEMCAD X Version 14.6.10 (7331)

Ch4233/Area Scan (71x71x1): Interpolated grid: dx=1.500 mm, dy=1.500 mm
Maximum value of SAR (interpolated) = 1.41 W/kg

Ch4233/Zoom Scan (6x6x7)/Cube 0: Measurement grid: dx=8mm, dy=8mm, dz=5mm
Reference Value = 16.66 V/m; Power Drift = 0.04 dB
Peak SAR (extrapolated) = 2.26 W/kg
SAR(1 g) = 1.09 W/kg; SAR(10 g) = 0.579 W/kg
Maximum value of SAR (measured) = 1.71 W/kg

Ch4233/Zoom Scan (6x6x7)/Cube 1: Measurement grid: dx=8mm, dy=8mm, dz=5mm
Reference Value = 16.66 V/m; Power Drift = 0.04 dB
Peak SAR (extrapolated) = 2.24 W/kg
SAR(1 g) = 1.06 W/kg; SAR(10 g) = 0.543 W/kg
Maximum value of SAR (measured) = 1.66 W/kg



0 dB = 1.66 W/kg

49_WCDMA IV_RMC 12.2Kbps_Back_5mm_Ch1513

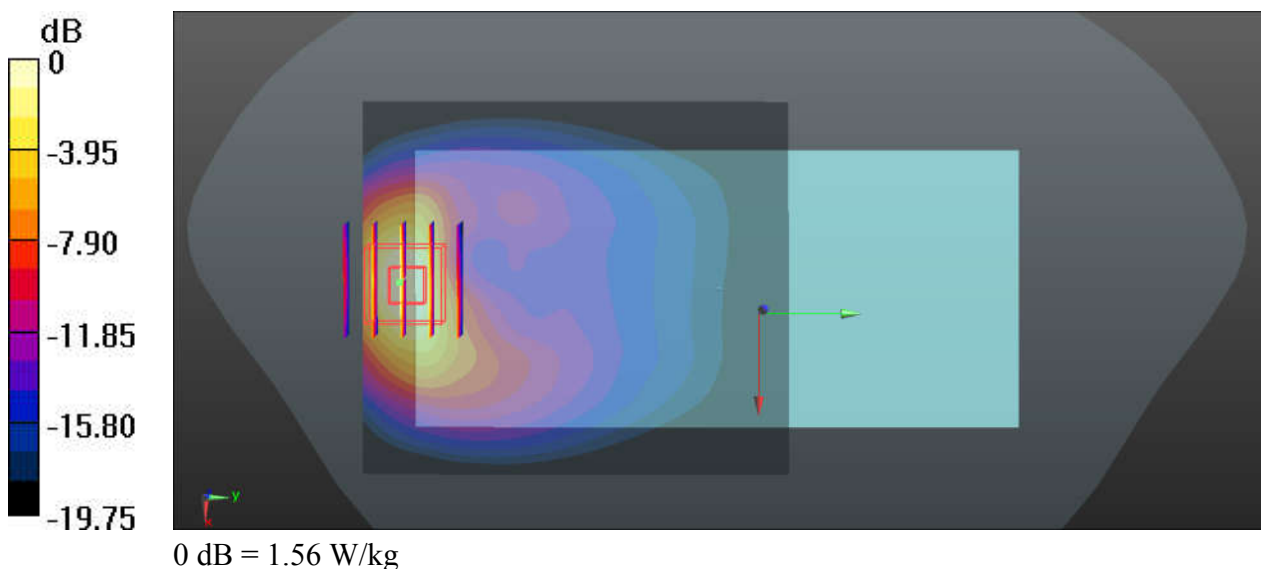
Communication System: UID 0, UMTS (0); Frequency: 1752.6 MHz; Duty Cycle: 1:1
Medium: HSL_1750_200901 Medium parameters used: $f = 1753 \text{ MHz}$; $\sigma = 1.41 \text{ S/m}$; $\epsilon_r = 41.52$; $\rho = 1000 \text{ kg/m}^3$
Ambient Temperature : $23.5 \text{ }^\circ\text{C}$; Liquid Temperature : $22.4 \text{ }^\circ\text{C}$

DASY5 Configuration:

- Probe: EX3DV4 - SN7576; ConvF(8.88, 8.88, 8.88); Calibrated: 2020.01.22;
- Sensor-Surface: 2mm (Mechanical Surface Detection)
- Electronics: DAE3 Sn528; Calibrated: 2020.03.16
- Phantom: SAM (Front) with CRP v5.0; Type: QD000P40CD; Serial: TP:1795
- Measurement SW: DASY52, Version 52.8 (8); SEMCAD X Version 14.6.10 (7331)

Ch1513/Area Scan (71x81x1): Interpolated grid: $dx=1.500 \text{ mm}$, $dy=1.500 \text{ mm}$
Maximum value of SAR (interpolated) = 1.66 W/kg

Ch1513/Zoom Scan (5x5x7)/Cube 0: Measurement grid: $dx=8\text{mm}$, $dy=8\text{mm}$, $dz=5\text{mm}$
Reference Value = 4.204 V/m ; Power Drift = 0.08 dB
Peak SAR (extrapolated) = 1.98 W/kg
SAR(1 g) = 1.11 W/kg ; SAR(10 g) = 0.549 W/kg
Maximum value of SAR (measured) = 1.56 W/kg



50_WCDMA II_RMC 12.2Kbps_Back_5mm_Ch9400

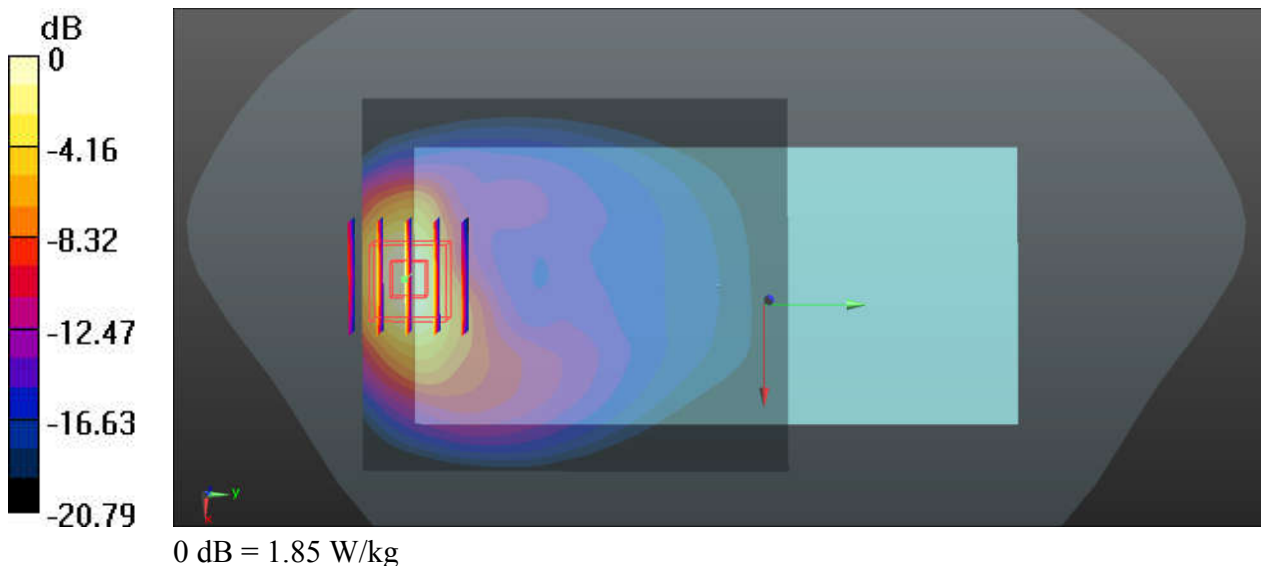
Communication System: UID 0, UMTS (0); Frequency: 1880 MHz; Duty Cycle: 1:1
Medium: HSL_1900_200903 Medium parameters used: $f = 1880$ MHz; $\sigma = 1.428$ S/m; $\epsilon_r = 39.095$;
 $\rho = 1000$ kg/m³
Ambient Temperature : 23.4 °C ; Liquid Temperature : 22.7 °C

DASY5 Configuration:

- Probe: EX3DV4 - SN7576; ConvF(8.58, 8.58, 8.58); Calibrated: 2020.01.22;
- Sensor-Surface: 2mm (Mechanical Surface Detection)
- Electronics: DAE3 Sn528; Calibrated: 2020.03.16
- Phantom: SAM (Front) with CRP v5.0; Type: QD000P40CD; Serial: TP:1795
- Measurement SW: DASY52, Version 52.8 (8); SEMCAD X Version 14.6.10 (7331)

Ch9400/Area Scan (71x81x1): Interpolated grid: dx=1.500 mm, dy=1.500 mm
Maximum value of SAR (interpolated) = 1.94 W/kg

Ch9400/Zoom Scan (5x5x7)/Cube 0: Measurement grid: dx=8mm, dy=8mm, dz=5mm
Reference Value = 4.663 V/m; Power Drift = 0.04 dB
Peak SAR (extrapolated) = 2.34 W/kg
SAR(1 g) = 1.27 W/kg; SAR(10 g) = 0.613 W/kg
Maximum value of SAR (measured) = 1.85 W/kg



51_CDMA2000 BC0_RC3 SO32 (F+SCH)_Back_5mm_Ch1013

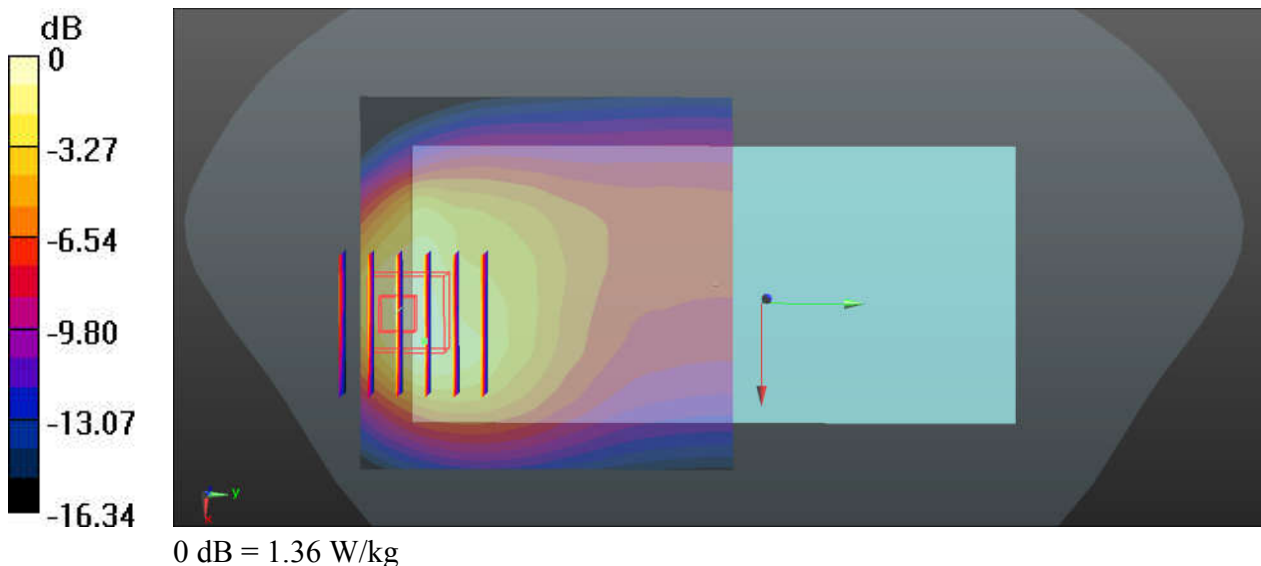
Communication System: UID 0, CDMA2000 (0); Frequency: 824.7 MHz; Duty Cycle: 1:1
Medium: HSL_835_200829 Medium parameters used: $f = 824.7$ MHz; $\sigma = 0.895$ S/m; $\epsilon_r = 41.304$;
 $\rho = 1000$ kg/m³
Ambient Temperature : 23.4 °C; Liquid Temperature : 22.6 °C

DASY5 Configuration:

- Probe: EX3DV4 - SN7576; ConvF(10.45, 10.45, 10.45); Calibrated: 2020.01.22;
- Sensor-Surface: 2mm (Mechanical Surface Detection)
- Electronics: DAE3 Sn528; Calibrated: 2020.03.16
- Phantom: SAM (Front) with CRP v5.0; Type: QD000P40CD; Serial: TP:1795
- Measurement SW: DASY52, Version 52.8 (8); SEMCAD X Version 14.6.10 (7331)

Ch1013/Area Scan (71x71x1): Interpolated grid: dx=1.500 mm, dy=1.500 mm
Maximum value of SAR (interpolated) = 1.20 W/kg

Ch1013/Zoom Scan (6x6x7)/Cube 0: Measurement grid: dx=8mm, dy=8mm, dz=5mm
Reference Value = 16.85 V/m; Power Drift = 0.03 dB
Peak SAR (extrapolated) = 2.06 W/kg
SAR(1 g) = 1.02 W/kg; SAR(10 g) = 0.545 W/kg
Maximum value of SAR (measured) = 1.36 W/kg



52_CDMA2000 BC10_RC3 SO32 (F+SCH)_Back_5mm_Ch580

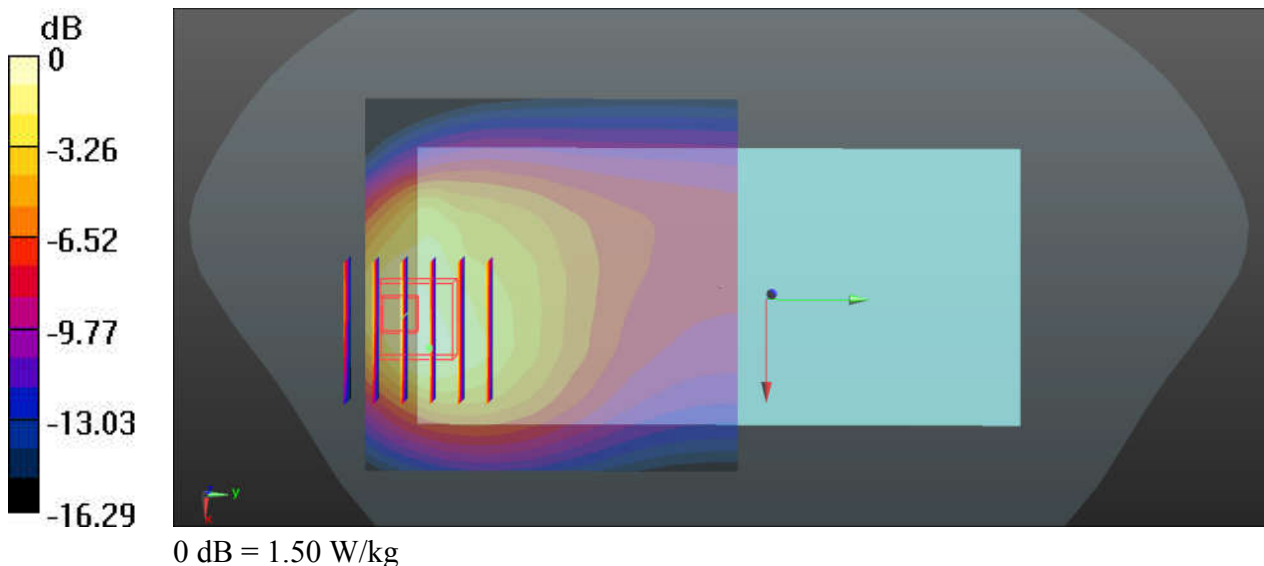
Communication System: UID 0, CDMA2000 (0); Frequency: 820.5 MHz; Duty Cycle: 1:1
Medium: HSL_835_200829 Medium parameters used: $f = 820.5$ MHz; $\sigma = 0.892$ S/m; $\epsilon_r = 41.341$;
 $\rho = 1000$ kg/m³
Ambient Temperature : 23.4 °C; Liquid Temperature : 22.6 °C

DASY5 Configuration:

- Probe: EX3DV4 - SN7576; ConvF(10.45, 10.45, 10.45); Calibrated: 2020.01.22;
- Sensor-Surface: 2mm (Mechanical Surface Detection)
- Electronics: DAE3 Sn528; Calibrated: 2020.03.16
- Phantom: SAM (Front) with CRP v5.0; Type: QD000P40CD; Serial: TP:1795
- Measurement SW: DASY52, Version 52.8 (8); SEMCAD X Version 14.6.10 (7331)

Ch580/Area Scan (71x71x1): Interpolated grid: dx=1.500 mm, dy=1.500 mm
Maximum value of SAR (interpolated) = 1.31 W/kg

Ch580/Zoom Scan (6x6x7)/Cube 0: Measurement grid: dx=8mm, dy=8mm, dz=5mm
Reference Value = 15.96 V/m; Power Drift = 0.07 dB
Peak SAR (extrapolated) = 2.32 W/kg
SAR(1 g) = 1.11 W/kg; SAR(10 g) = 0.598 W/kg
Maximum value of SAR (measured) = 1.50 W/kg



53_CDMA2000 BC1_RC3 SO32 (F+SCH)_Back_5mm_Ch1175_Headset

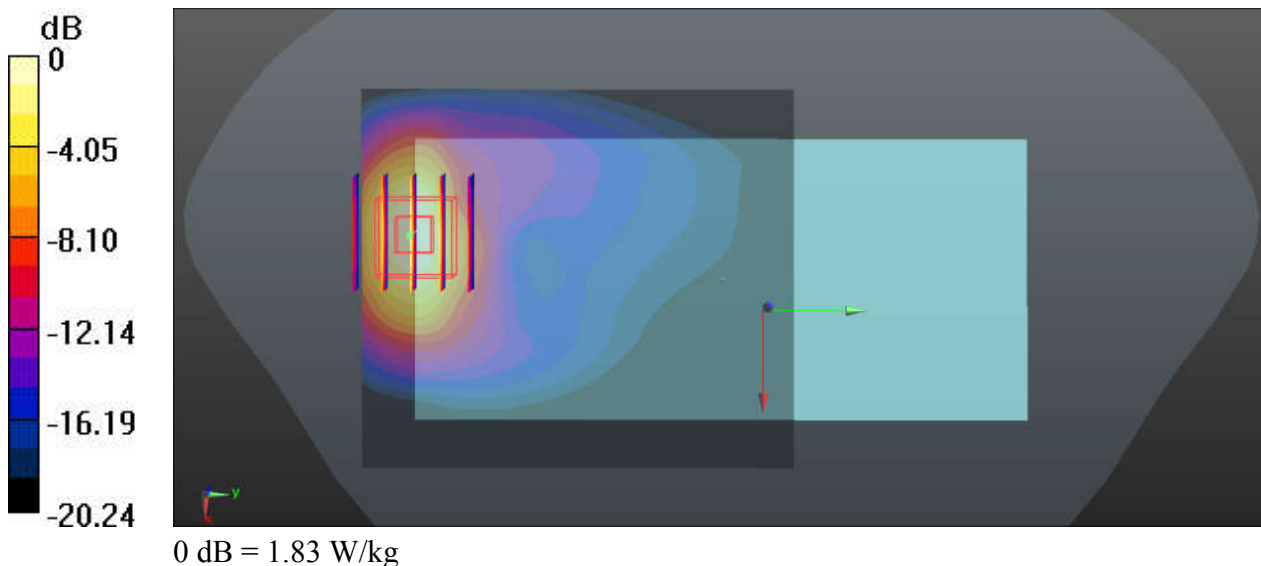
Communication System: UID 0, CDMA2000 (0); Frequency: 1908.75 MHz; Duty Cycle: 1:1
Medium: HSL_1900_200903 Medium parameters used: $f = 1909$ MHz; $\sigma = 1.457$ S/m; $\epsilon_r = 38.951$;
 $\rho = 1000$ kg/m³
Ambient Temperature : 23.4 °C; Liquid Temperature : 22.7 °C

DASY5 Configuration:

- Probe: EX3DV4 - SN7576; ConvF(8.58, 8.58, 8.58); Calibrated: 2020.01.22;
- Sensor-Surface: 2mm (Mechanical Surface Detection)
- Electronics: DAE3 Sn528; Calibrated: 2020.03.16
- Phantom: SAM (Front) with CRP v5.0; Type: QD000P40CD; Serial: TP:1795
- Measurement SW: DASY52, Version 52.8 (8); SEMCAD X Version 14.6.10 (7331)

Ch1175/Area Scan (71x81x1): Interpolated grid: dx=1.500 mm, dy=1.500 mm
Maximum value of SAR (interpolated) = 1.83 W/kg

Ch1175/Zoom Scan (5x5x7)/Cube 0: Measurement grid: dx=8mm, dy=8mm, dz=5mm
Reference Value = 3.784 V/m; Power Drift = 0.01 dB
Peak SAR (extrapolated) = 2.33 W/kg
SAR(1 g) = 1.25 W/kg; SAR(10 g) = 0.612 W/kg
Maximum value of SAR (measured) = 1.83 W/kg



54_LTE Band 71_20M_QPSK_1_0_Back_5mm_Ch133322

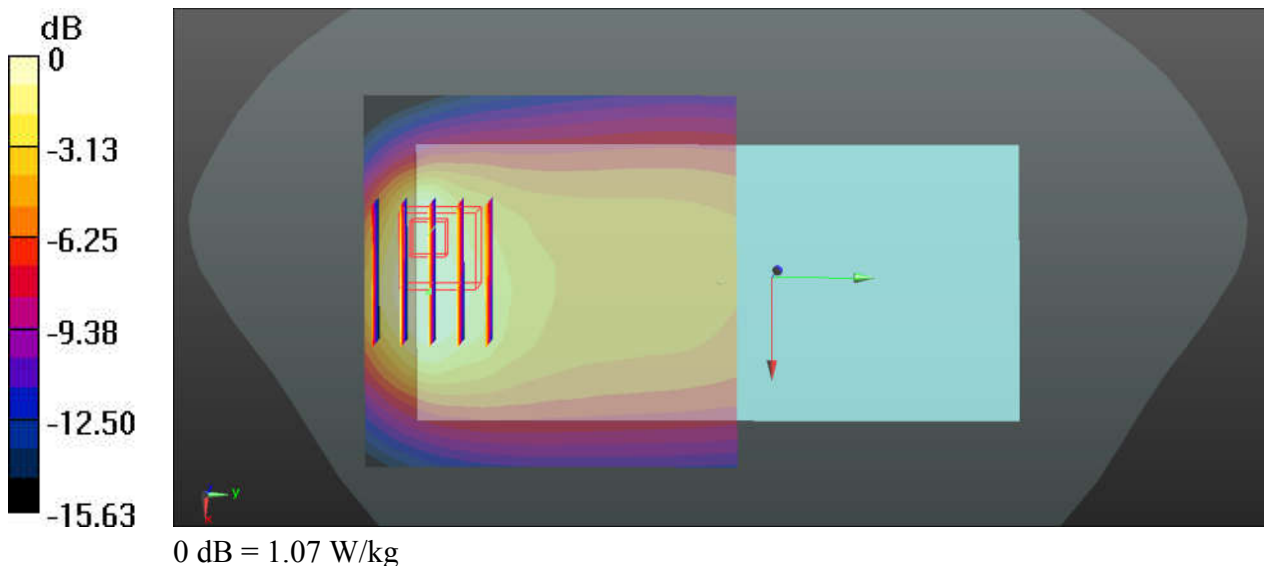
Communication System: UID 0, LTE (0); Frequency: 683 MHz; Duty Cycle: 1:1
Medium: HSL_750_200820 Medium parameters used: $f = 683 \text{ MHz}$; $\sigma = 0.848 \text{ S/m}$; $\epsilon_r = 42.096$; $\rho = 1000 \text{ kg/m}^3$
Ambient Temperature : $23.4 \text{ }^\circ\text{C}$; Liquid Temperature : $22.5 \text{ }^\circ\text{C}$

DASY5 Configuration:

- Probe: EX3DV4 - SN7576; ConvF(10.71, 10.71, 10.71); Calibrated: 2020.01.22;
- Sensor-Surface: 2mm (Mechanical Surface Detection)
- Electronics: DAE3 Sn528; Calibrated: 2020.03.16
- Phantom: SAM (Front) with CRP v5.0; Type: QD000P40CD; Serial: TP:1795
- Measurement SW: DASY52, Version 52.8 (8); SEMCAD X Version 14.6.10 (7331)

Ch133322/Area Scan (71x71x1): Interpolated grid: $dx=1.500 \text{ mm}$, $dy=1.500 \text{ mm}$
Maximum value of SAR (interpolated) = 1.19 W/kg

Ch133322/Zoom Scan (6x5x7)/Cube 0: Measurement grid: $dx=8\text{mm}$, $dy=8\text{mm}$, $dz=5\text{mm}$
Reference Value = 20.92 V/m ; Power Drift = -0.02 dB
Peak SAR (extrapolated) = 1.53 W/kg
SAR(1 g) = 0.711 W/kg ; SAR(10 g) = 0.413 W/kg
Maximum value of SAR (measured) = 1.07 W/kg



55_LTE Band 12_10M_QPSK_1_49_Back_5mm_Ch23095

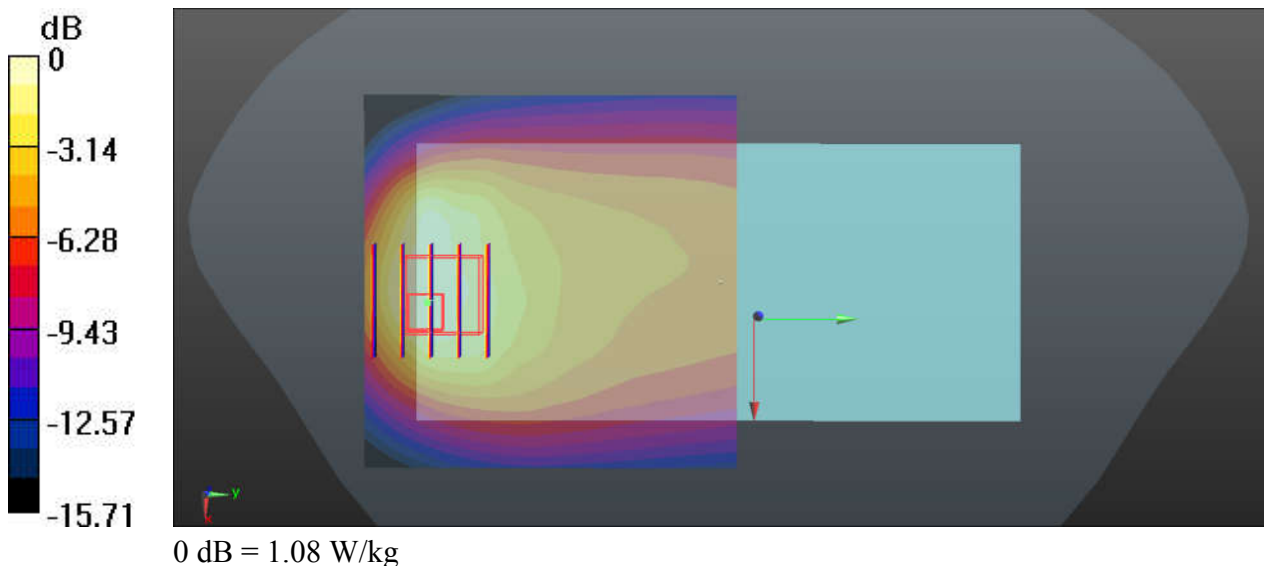
Communication System: UID 0, LTE (0); Frequency: 707.5 MHz; Duty Cycle: 1:1
Medium: HSL_750_200820 Medium parameters used: $f = 707.5$ MHz; $\sigma = 0.859$ S/m; $\epsilon_r = 41.717$;
 $\rho = 1000$ kg/m³
Ambient Temperature : 23.4 °C; Liquid Temperature : 22.5 °C

DASY5 Configuration:

- Probe: EX3DV4 - SN7576; ConvF(10.71, 10.71, 10.71); Calibrated: 2020.01.22;
- Sensor-Surface: 2mm (Mechanical Surface Detection)
- Electronics: DAE3 Sn528; Calibrated: 2020.03.16
- Phantom: SAM (Front) with CRP v5.0; Type: QD000P40CD; Serial: TP:1795
- Measurement SW: DASY52, Version 52.8 (8); SEMCAD X Version 14.6.10 (7331)

Ch23095/Area Scan (71x71x1): Interpolated grid: dx=1.500 mm, dy=1.500 mm
Maximum value of SAR (interpolated) = 1.28 W/kg

Ch23095/Zoom Scan (5x5x7)/Cube 0: Measurement grid: dx=8mm, dy=8mm, dz=5mm
Reference Value = 19.44 V/m; Power Drift = 0.01 dB
Peak SAR (extrapolated) = 1.59 W/kg
SAR(1 g) = 0.710 W/kg; SAR(10 g) = 0.395 W/kg
Maximum value of SAR (measured) = 1.08 W/kg



56_LTE Band 13_10M_QPSK_1_25_Back_5mm_Ch23230

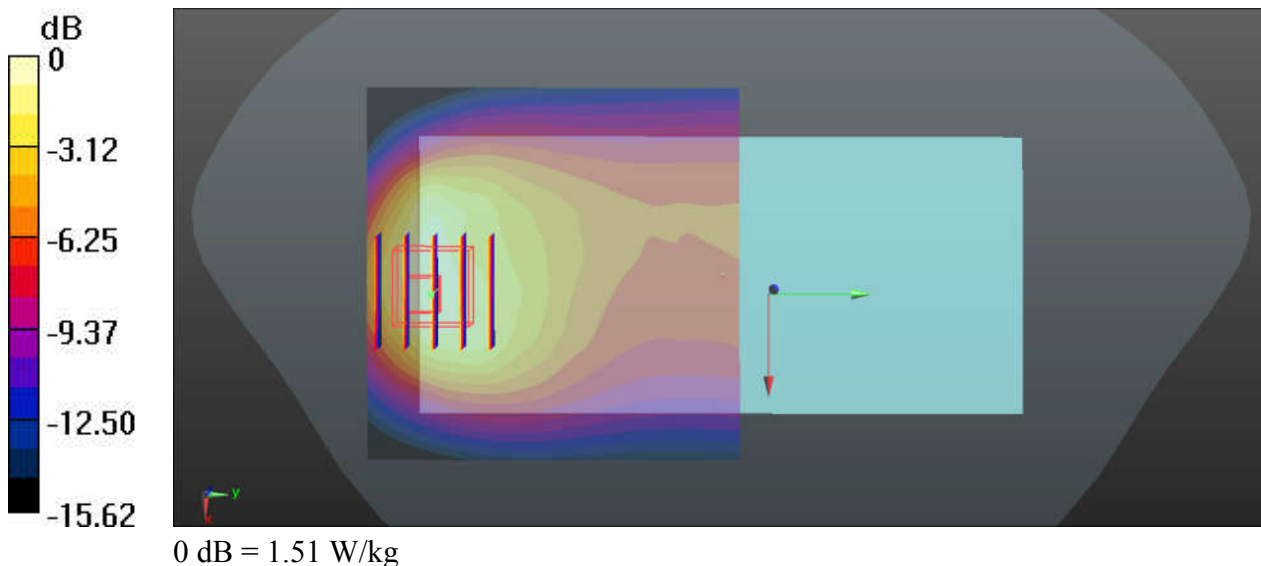
Communication System: UID 0, LTE (0); Frequency: 782 MHz; Duty Cycle: 1:1
Medium: HSL_750_200820 Medium parameters used: $f = 782 \text{ MHz}$; $\sigma = 0.901 \text{ S/m}$; $\epsilon_r = 40.08$; $\rho = 1000 \text{ kg/m}^3$
Ambient Temperature : $23.4 \text{ }^\circ\text{C}$; Liquid Temperature : $22.5 \text{ }^\circ\text{C}$

DASY5 Configuration:

- Probe: EX3DV4 - SN7576; ConvF(10.71, 10.71, 10.71); Calibrated: 2020.01.22;
- Sensor-Surface: 2mm (Mechanical Surface Detection)
- Electronics: DAE3 Sn528; Calibrated: 2020.03.16
- Phantom: SAM (Front) with CRP v5.0; Type: QD000P40CD; Serial: TP:1795
- Measurement SW: DASY52, Version 52.8 (8); SEMCAD X Version 14.6.10 (7331)

Ch23230/Area Scan (71x71x1): Interpolated grid: $dx=1.500 \text{ mm}$, $dy=1.500 \text{ mm}$
Maximum value of SAR (interpolated) = 1.74 W/kg

Ch23230/Zoom Scan (5x5x7)/Cube 0: Measurement grid: $dx=8\text{mm}$, $dy=8\text{mm}$, $dz=5\text{mm}$
Reference Value = 20.17 V/m ; Power Drift = 0.04 dB
Peak SAR (extrapolated) = 2.14 W/kg
SAR(1 g) = 1 W/kg ; SAR(10 g) = 0.543 W/kg
Maximum value of SAR (measured) = 1.51 W/kg



57_LTE Band 14_10M_QPSK_1_49_Back_5mm_Ch23330

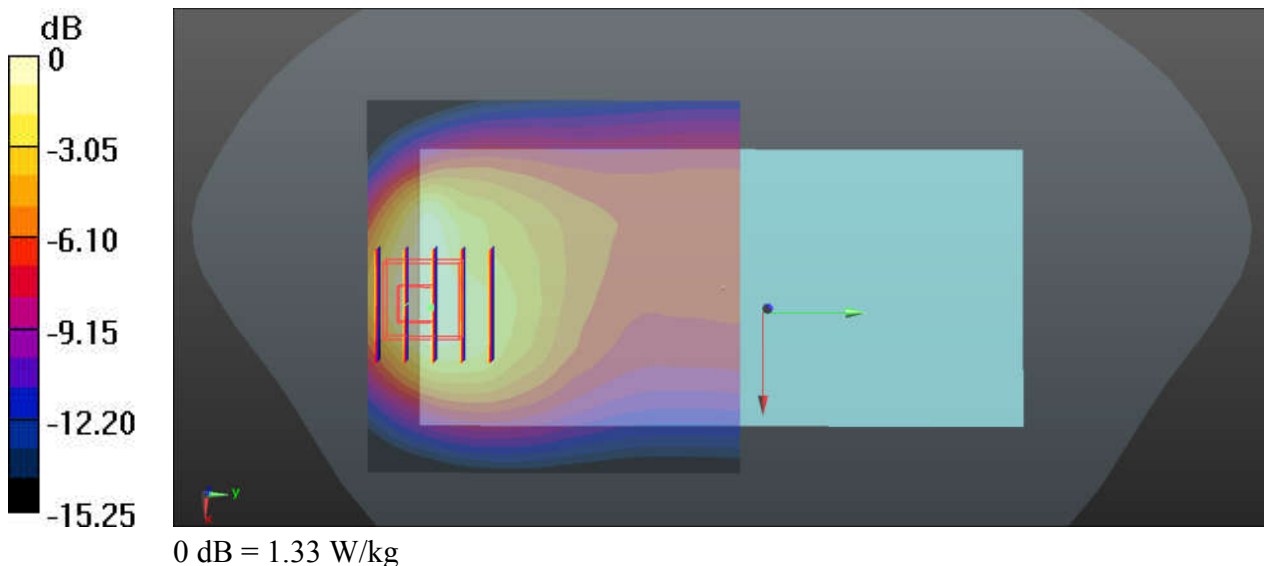
Communication System: UID 0, LTE (0); Frequency: 793 MHz; Duty Cycle: 1:1
Medium: HSL_750_200830 Medium parameters used: $f = 793$ MHz; $\sigma = 0.918$ S/m; $\epsilon_r = 40.645$; $\rho = 1000$ kg/m³
Ambient Temperature : 23.4 °C; Liquid Temperature : 22.4 °C

DASY5 Configuration:

- Probe: EX3DV4 - SN7576; ConvF(10.71, 10.71, 10.71); Calibrated: 2020.01.22;
- Sensor-Surface: 2mm (Mechanical Surface Detection)
- Electronics: DAE3 Sn528; Calibrated: 2020.03.16
- Phantom: SAM (Front) with CRP v5.0; Type: QD000P40CD; Serial: TP:1795
- Measurement SW: DASY52, Version 52.8 (8); SEMCAD X Version 14.6.10 (7331)

Ch23330/Area Scan (71x71x1): Interpolated grid: dx=1.500 mm, dy=1.500 mm
Maximum value of SAR (interpolated) = 1.61 W/kg

Ch23330/Zoom Scan (5x5x7)/Cube 0: Measurement grid: dx=8mm, dy=8mm, dz=5mm
Reference Value = 18.27 V/m; Power Drift = 0.07 dB
Peak SAR (extrapolated) = 1.98 W/kg
SAR(1 g) = 0.936 W/kg; SAR(10 g) = 0.506 W/kg
Maximum value of SAR (measured) = 1.33 W/kg



58_LTE Band 5_10M_QPSK_1_49_Back_5mm_Ch20525

Communication System: UID 0, LTE (0); Frequency: 836.5 MHz; Duty Cycle: 1:1
Medium: HSL_835_200829 Medium parameters used: $f = 836.5$ MHz; $\sigma = 0.905$ S/m; $\epsilon_r = 41.197$;
 $\rho = 1000$ kg/m³
Ambient Temperature : 23.4 °C; Liquid Temperature : 22.6 °C

DASY5 Configuration:

- Probe: EX3DV4 - SN7576; ConvF(10.45, 10.45, 10.45); Calibrated: 2020.01.22;
- Sensor-Surface: 2mm (Mechanical Surface Detection)
- Electronics: DAE3 Sn528; Calibrated: 2020.03.16
- Phantom: SAM (Front) with CRP v5.0; Type: QD000P40CD; Serial: TP:1795
- Measurement SW: DASY52, Version 52.8 (8); SEMCAD X Version 14.6.10 (7331)

Ch20525/Area Scan (71x71x1): Interpolated grid: dx=1.500 mm, dy=1.500 mm
Maximum value of SAR (interpolated) = 1.48 W/kg

Ch20525/Zoom Scan (5x5x7)/Cube 0: Measurement grid: dx=8mm, dy=8mm, dz=5mm
Reference Value = 11.18 V/m; Power Drift = 0.06 dB
Peak SAR (extrapolated) = 2.00 W/kg
SAR(1 g) = 0.973 W/kg; SAR(10 g) = 0.503 W/kg
Maximum value of SAR (measured) = 1.49 W/kg

