

### 04\_WCDMA IV\_RMC 12.2Kbps\_Right Cheek\_0mm\_Ch1413

Communication System: UID 0, WCDMA (0); Frequency: 1732.6 MHz; Duty Cycle: 1:1  
Medium: HSL\_1750 Medium parameters used:  $f = 1732.6$  MHz;  $\sigma = 1.342$  S/m;  $\epsilon_r = 39.415$ ;  $\rho = 1000$  kg/m<sup>3</sup>

Ambient Temperature : 23.3 °C; Liquid Temperature : 22.8 °C

DASY5 Configuration:

- Probe: EX3DV4 - SN7592; ConvF(8.41, 8.41, 8.41); Calibrated: 2020.5.22
- Sensor-Surface: 1.4mm (Mechanical Surface Detection)
- Electronics: DAE4 Sn656; Calibrated: 2019.12.17
- Phantom: SAM1; Type: SAM; Serial: TP-1697
- Measurement SW: DASY52, Version 52.10 (4); SEMCAD X Version 14.6.14 (7483)

**Area Scan (71x81x1):** Interpolated grid: dx=1.500 mm, dy=1.500 mm

Maximum value of SAR (interpolated) = 0.0621 W/kg

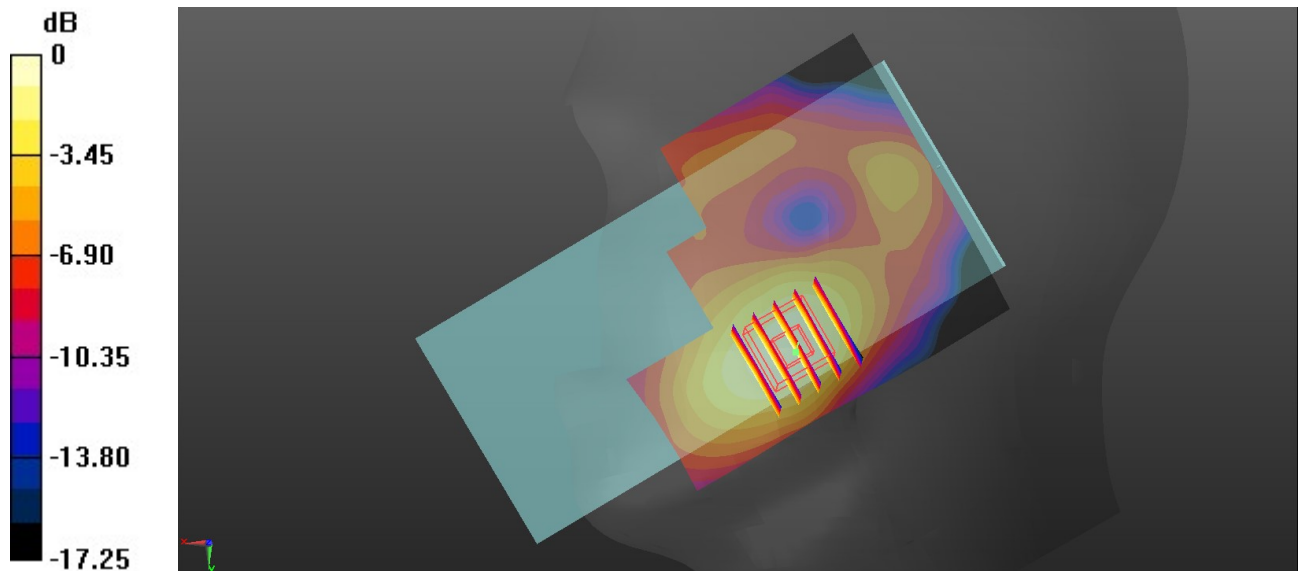
**Zoom Scan (5x5x7)/Cube 0:** Measurement grid: dx=8mm, dy=8mm, dz=5mm

Reference Value = 3.168 V/m; Power Drift = -0.06 dB

Peak SAR (extrapolated) = 0.0730 W/kg

**SAR(1 g) = 0.047 W/kg; SAR(10 g) = 0.029 W/kg**

Maximum value of SAR (measured) = 0.0636 W/kg



0 dB = 0.0636 W/kg = -11.97 dBW/kg

### 05\_WCDMA V\_RMC 12.2Kbps\_Right Cheek\_0mm\_Ch4132

Communication System: UID 0, WCDMA (0); Frequency: 826.4 MHz; Duty Cycle: 1:1  
Medium: HSL\_850 Medium parameters used:  $f = 826.4$  MHz;  $\sigma = 0.886$  S/m;  $\epsilon_r = 41.748$ ;  $\rho = 1000$  kg/m<sup>3</sup>

Ambient Temperature : 23.2 °C; Liquid Temperature : 22.8 °C

DASY5 Configuration:

- Probe: EX3DV4 - SN7592; ConvF(10.05, 10.05, 10.05); Calibrated: 2020.5.22
- Sensor-Surface: 1.4mm (Mechanical Surface Detection)
- Electronics: DAE4 Sn656; Calibrated: 2019.12.17
- Phantom: SAM1; Type: SAM; Serial: TP-1697
- Measurement SW: DASY52, Version 52.10 (4); SEMCAD X Version 14.6.14 (7483)

**Area Scan (71x81x1):** Interpolated grid: dx=1.500 mm, dy=1.500 mm

Maximum value of SAR (interpolated) = 0.263 W/kg

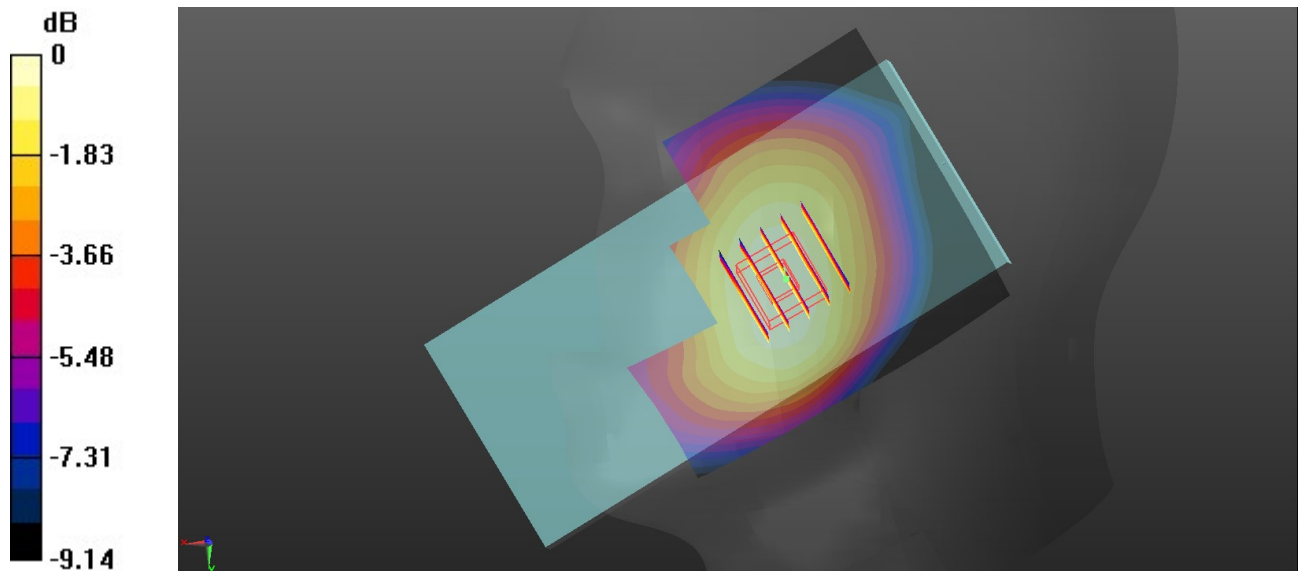
**Zoom Scan (5x5x7)/Cube 0:** Measurement grid: dx=8mm, dy=8mm, dz=5mm

Reference Value = 5.243 V/m; Power Drift = 0.02 dB

Peak SAR (extrapolated) = 0.279 W/kg

**SAR(1 g) = 0.226 W/kg; SAR(10 g) = 0.171 W/kg**

Maximum value of SAR (measured) = 0.261 W/kg



0 dB = 0.261 W/kg = -5.83 dBW/kg

**06\_LTE Band 2\_20M\_QPSK\_1RB\_0Offset\_Left Cheek\_0mm\_Ch18900**

Communication System: UID 0, LTE-FDD (0); Frequency: 1880 MHz;Duty Cycle: 1:1  
Medium: HSL\_1900 Medium parameters used:  $f = 1880$  MHz;  $\sigma = 1.424$  S/m;  $\epsilon_r = 39.154$ ;  $\rho = 1000$  kg/m<sup>3</sup>

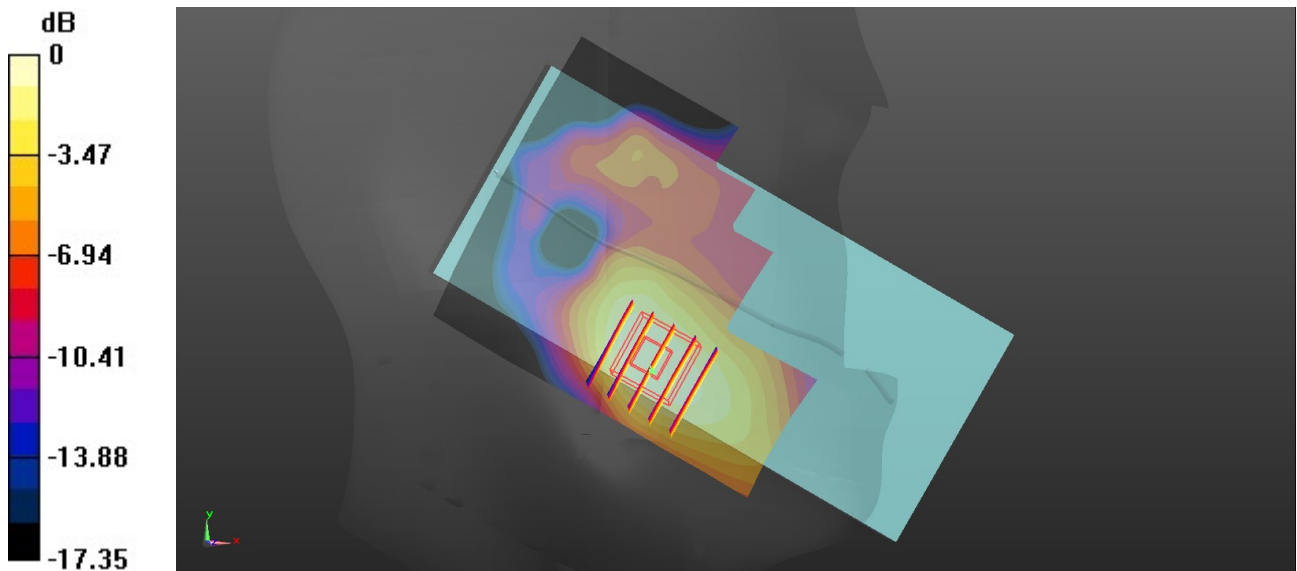
Ambient Temperature : 23.2 °C; Liquid Temperature : 22.9 °C

DASY5 Configuration:

- Probe: EX3DV4 - SN7592; ConvF(8.22, 8.22, 8.22); Calibrated: 2020.5.22
- Sensor-Surface: 1.4mm (Mechanical Surface Detection)
- Electronics: DAE4 Sn656; Calibrated: 2019.12.17
- Phantom: SAM1; Type: SAM; Serial: TP-1697
- Measurement SW: DASY52, Version 52.10 (4); SEMCAD X Version 14.6.14 (7483)

**Area Scan (71x81x1):** Interpolated grid: dx=1.500 mm, dy=1.500 mm  
Maximum value of SAR (interpolated) = 0.0696 W/kg

**Zoom Scan (5x5x7)/Cube 0:** Measurement grid: dx=8mm, dy=8mm, dz=5mm  
Reference Value = 1.464 V/m; Power Drift = 0.01 dB  
Peak SAR (extrapolated) = 0.0790 W/kg  
**SAR(1 g) = 0.050 W/kg; SAR(10 g) = 0.031 W/kg**  
Maximum value of SAR (measured) = 0.0668 W/kg



0 dB = 0.0668 W/kg = -11.75 dBW/kg

### 07\_LTE Band 5\_10M\_QPSK\_1RB\_0Offset\_Right Cheek\_0mm\_Ch20525

Communication System: UID 0, LTE-FDD (0); Frequency: 836.5 MHz; Duty Cycle: 1:1  
Medium: HSL\_850 Medium parameters used:  $f = 836.5$  MHz;  $\sigma = 0.895$  S/m;  $\epsilon_r = 41.621$ ;  $\rho = 1000$  kg/m<sup>3</sup>

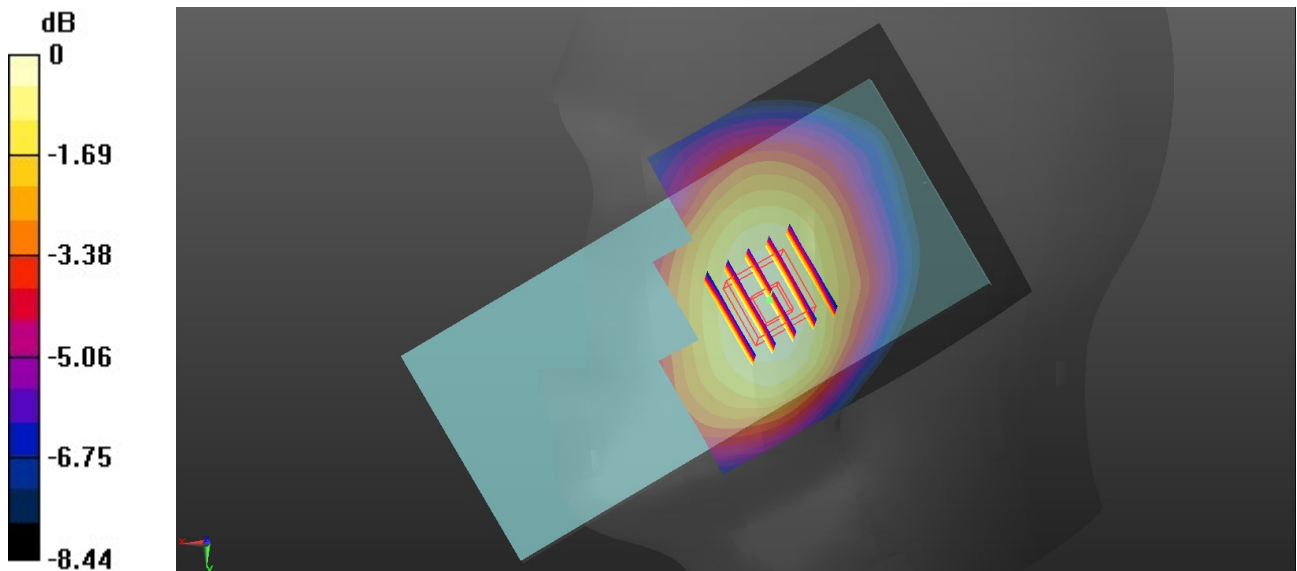
Ambient Temperature : 23.2 °C; Liquid Temperature : 22.8 °C

#### DASY5 Configuration:

- Probe: EX3DV4 - SN7592; ConvF(10.05, 10.05, 10.05); Calibrated: 2020.5.22
- Sensor-Surface: 1.4mm (Mechanical Surface Detection)
- Electronics: DAE4 Sn656; Calibrated: 2019.12.17
- Phantom: SAM1; Type: SAM; Serial: TP-1697
- Measurement SW: DASY52, Version 52.10 (4); SEMCAD X Version 14.6.14 (7483)

**Area Scan (71x81x1):** Interpolated grid: dx=1.500 mm, dy=1.500 mm  
Maximum value of SAR (interpolated) = 0.277 W/kg

**Zoom Scan (5x5x7)/Cube 0:** Measurement grid: dx=8mm, dy=8mm, dz=5mm  
Reference Value = 6.327 V/m; Power Drift = -0.02 dB  
Peak SAR (extrapolated) = 0.293 W/kg  
**SAR(1 g) = 0.231 W/kg; SAR(10 g) = 0.176 W/kg**  
Maximum value of SAR (measured) = 0.273 W/kg



0 dB = 0.273 W/kg = -5.64 dBW/kg

**08\_LTE Band 7\_20M\_QPSK\_1RB\_0Offset\_Right Cheek\_0mm\_Ch21100**

Communication System: UID 0, LTE-FDD (0); Frequency: 2535 MHz;Duty Cycle: 1:1  
Medium: HSL\_2600 Medium parameters used:  $f = 2535$  MHz;  $\sigma = 1.869$  S/m;  $\epsilon_r = 38.446$ ;  $\rho = 1000$  kg/m<sup>3</sup>

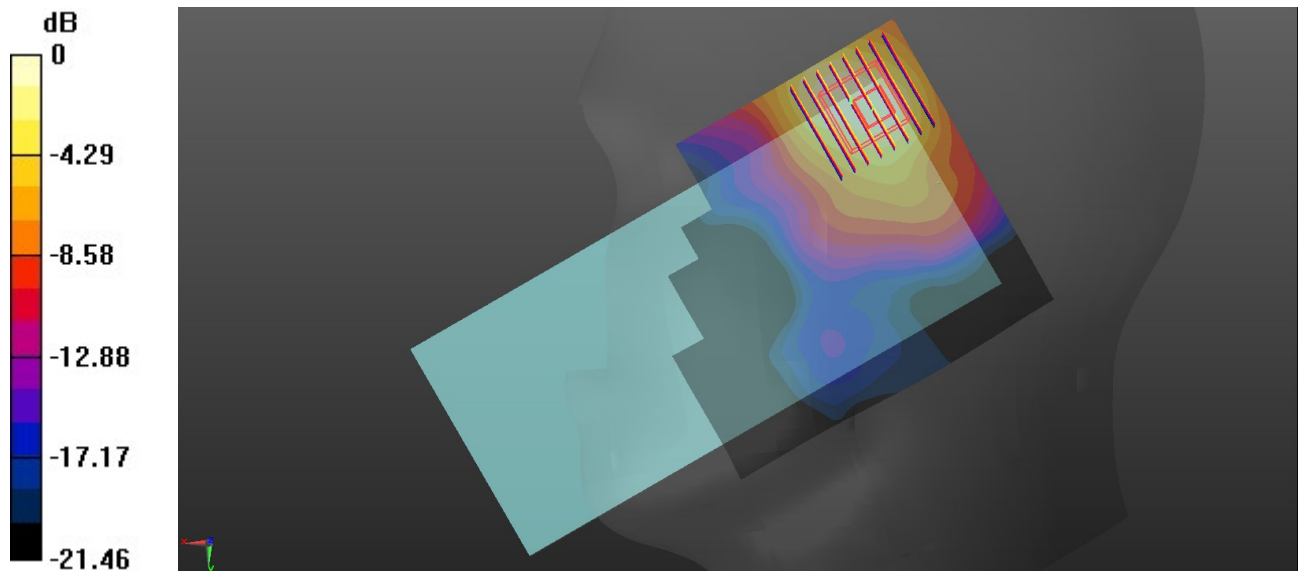
Ambient Temperature : 23.3 °C; Liquid Temperature : 22.6 °C

DASY5 Configuration:

- Probe: EX3DV4 - SN7592; ConvF(7.31, 7.31, 7.31); Calibrated: 2020.5.22
- Sensor-Surface: 1.4mm (Mechanical Surface Detection)
- Electronics: DAE4 Sn656; Calibrated: 2019.12.17
- Phantom: SAM1; Type: SAM; Serial: TP-1697
- Measurement SW: DASY52, Version 52.10 (4); SEMCAD X Version 14.6.14 (7483)

**Area Scan (91x101x1):** Interpolated grid: dx=1.200 mm, dy=1.200 mm  
Maximum value of SAR (interpolated) = 0.640 W/kg

**Zoom Scan (8x8x7)/Cube 0:** Measurement grid: dx=5mm, dy=5mm, dz=5mm  
Reference Value = 8.463 V/m; Power Drift = 0.01 dB  
Peak SAR (extrapolated) = 0.773 W/kg  
**SAR(1 g) = 0.415 W/kg; SAR(10 g) = 0.217 W/kg**  
Maximum value of SAR (measured) = 0.634 W/kg



0 dB = 0.634 W/kg = -1.98 dBW/kg

**09\_LTE Band 66\_20M\_QPSK\_1RB\_0Offset\_Right Cheek\_0mm\_Ch132322**

Communication System: UID 0, LTE-FDD (0); Frequency: 1745 MHz; Duty Cycle: 1:1  
Medium: HSL\_1750 Medium parameters used:  $f = 1745$  MHz;  $\sigma = 1.351$  S/m;  $\epsilon_r = 39.389$ ;  $\rho = 1000$  kg/m<sup>3</sup>

Ambient Temperature : 23.3 °C; Liquid Temperature : 22.8 °C

DASY5 Configuration:

- Probe: EX3DV4 - SN7592; ConvF(8.41, 8.41, 8.41); Calibrated: 2020.5.22
- Sensor-Surface: 1.4mm (Mechanical Surface Detection)
- Electronics: DAE4 Sn656; Calibrated: 2019.12.17
- Phantom: SAM1; Type: SAM; Serial: TP-1697
- Measurement SW: DASY52, Version 52.10 (4); SEMCAD X Version 14.6.14 (7483)

**Area Scan (71x81x1):** Interpolated grid: dx=1.500 mm, dy=1.500 mm

Maximum value of SAR (interpolated) = 0.0798 W/kg

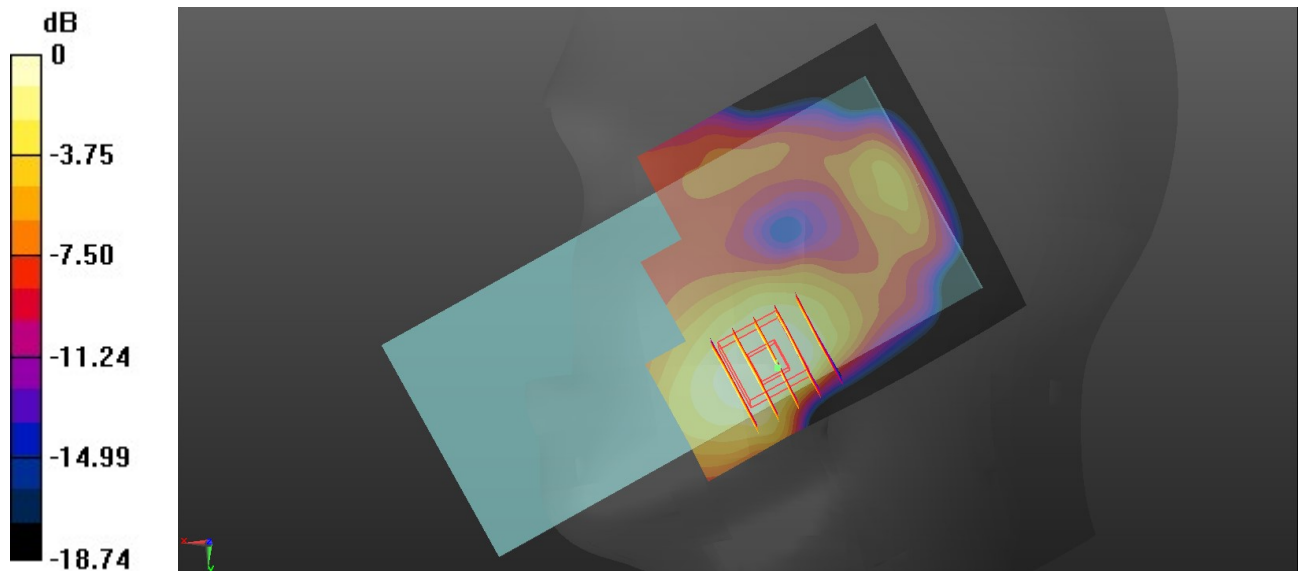
**Zoom Scan (5x5x7)/Cube 0:** Measurement grid: dx=8mm, dy=8mm, dz=5mm

Reference Value = 3.560 V/m; Power Drift = 0.01 dB

Peak SAR (extrapolated) = 0.0810 W/kg

**SAR(1 g) = 0.052 W/kg; SAR(10 g) = 0.033 W/kg**

Maximum value of SAR (measured) = 0.0685 W/kg



0 dB = 0.0685 W/kg = -11.64 dBW/kg

**10\_LTE Band 41\_20M\_QPSK\_1RB\_0Offset\_Right Cheek\_0mm\_Ch40890**

Communication System: UID 0, LTE-TDD (0); Frequency: 2620 MHz;Duty Cycle: 1:1.59  
Medium: HSL\_2600 Medium parameters used:  $f = 2620$  MHz;  $\sigma = 1.938$  S/m;  $\epsilon_r = 38.281$ ;  $\rho = 1000$  kg/m<sup>3</sup>

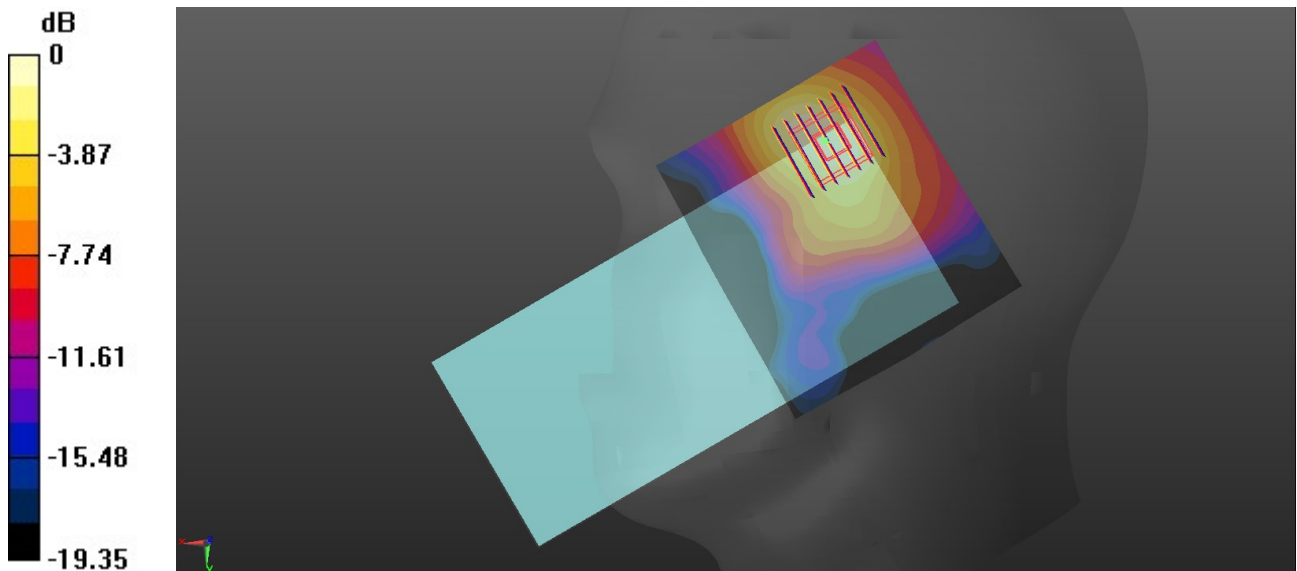
Ambient Temperature : 23.3 °C; Liquid Temperature : 22.6 °C

DASY5 Configuration:

- Probe: EX3DV4 - SN7592; ConvF(7.31, 7.31, 7.31); Calibrated: 2020.5.22
- Sensor-Surface: 1.4mm (Mechanical Surface Detection)
- Electronics: DAE4 Sn656; Calibrated: 2019.12.17
- Phantom: SAM1; Type: SAM; Serial: TP-1697
- Measurement SW: DASY52, Version 52.10 (4); SEMCAD X Version 14.6.14 (7483)

**Area Scan (91x81x1):** Interpolated grid: dx=1.200 mm, dy=1.200 mm  
Maximum value of SAR (interpolated) = 0.275 W/kg

**Zoom Scan (7x7x7)/Cube 0:** Measurement grid: dx=5mm, dy=5mm, dz=5mm  
Reference Value = 5.670 V/m; Power Drift = 0.01 dB  
Peak SAR (extrapolated) = 0.339 W/kg  
**SAR(1 g) = 0.179 W/kg; SAR(10 g) = 0.093 W/kg**  
Maximum value of SAR (measured) = 0.277 W/kg



0 dB = 0.277 W/kg = -5.58 dBW/kg

### 11\_WLAN2.4GHz\_802.11b 1Mbps\_Left Cheek\_0mm\_Ch11

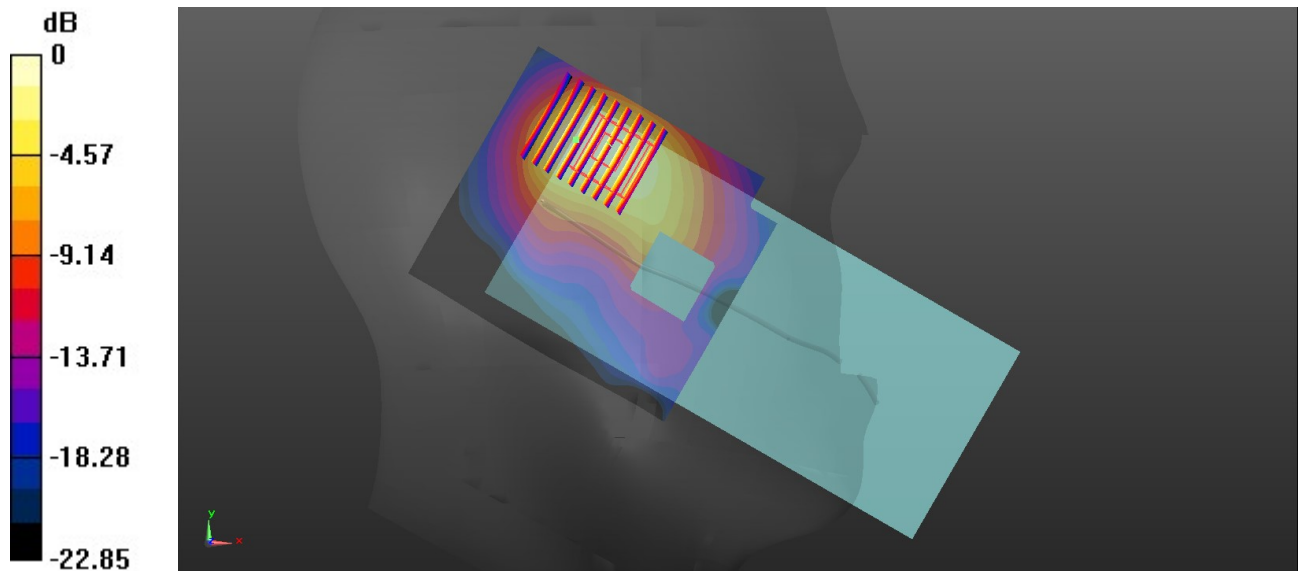
Communication System: UID 0, 802.11b (0); Frequency: 2462 MHz;Duty Cycle: 1:1  
Medium: HSL\_2450 Medium parameters used:  $f = 2462$  MHz;  $\sigma = 1.818$  S/m;  $\epsilon_r = 38.465$ ;  $\rho = 1000$  kg/m<sup>3</sup>  
Ambient Temperature : 23.1 °C; Liquid Temperature : 22.8 °C

#### DASY5 Configuration:

- Probe: EX3DV4 - SN7592; ConvF(7.57, 7.57, 7.57); Calibrated: 2020.5.22
- Sensor-Surface: 1.4mm (Mechanical Surface Detection)
- Electronics: DAE4 Sn656; Calibrated: 2019.12.17
- Phantom: SAM1; Type: SAM; Serial: TP-1697
- Measurement SW: DASY52, Version 52.10 (4); SEMCAD X Version 14.6.14 (7483)

**Area Scan (81x91x1):** Interpolated grid: dx=1.200 mm, dy=1.200 mm  
Maximum value of SAR (interpolated) = 1.34 W/kg

**Zoom Scan (8x9x7)/Cube 0:** Measurement grid: dx=5mm, dy=5mm, dz=5mm  
Reference Value = 10.68 V/m; Power Drift = 0.02 dB  
Peak SAR (extrapolated) = 1.37 W/kg  
**SAR(1 g) = 0.761 W/kg; SAR(10 g) = 0.394 W/kg**  
Maximum value of SAR (measured) = 1.15 W/kg



0 dB = 1.15 W/kg = 0.61 dBW/kg

## 12\_Bluetooth\_1Mbps\_Left Cheek\_0mm\_Ch39

Communication System: UID 0, Bluetooth (0); Frequency: 2441 MHz; Duty Cycle: 1:1.304  
Medium: HSL\_2450 Medium parameters used:  $f = 2441$  MHz;  $\sigma = 1.802$  S/m;  $\epsilon_r = 38.556$ ;  $\rho = 1000$  kg/m<sup>3</sup>

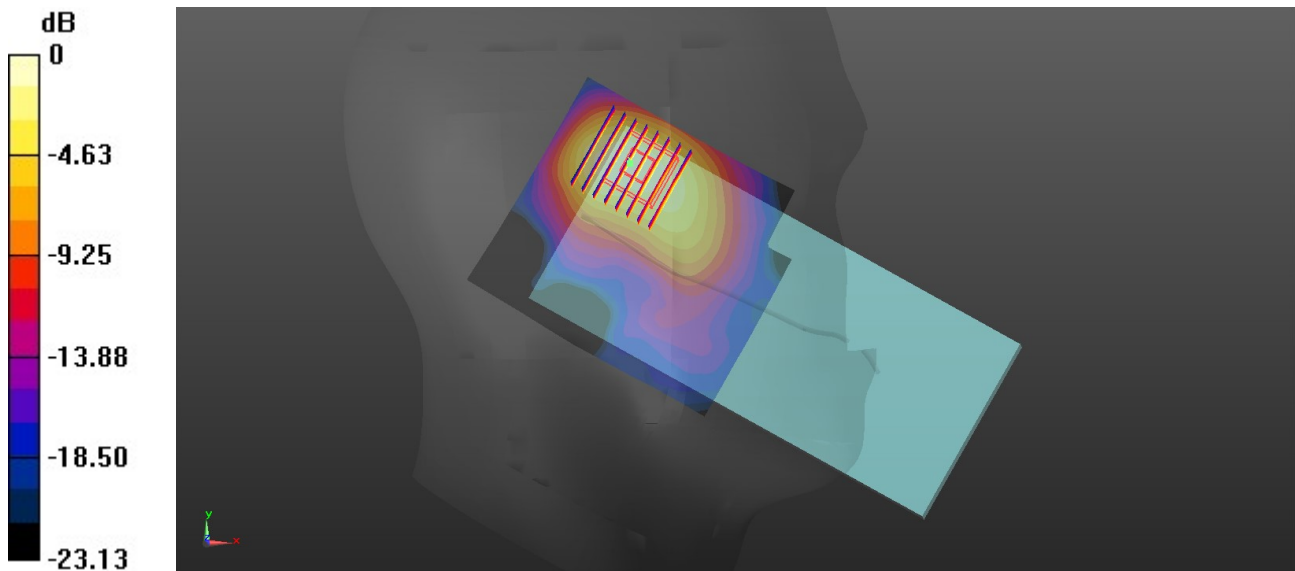
Ambient Temperature : 23.1 °C; Liquid Temperature : 22.8 °C

DASY5 Configuration:

- Probe: EX3DV4 - SN7592; ConvF(7.57, 7.57, 7.57); Calibrated: 2020.5.22
- Sensor-Surface: 1.4mm (Mechanical Surface Detection)
- Electronics: DAE4 Sn656; Calibrated: 2019.12.17
- Phantom: SAM1; Type: SAM; Serial: TP-1697
- Measurement SW: DASY52, Version 52.10 (4); SEMCAD X Version 14.6.14 (7483)

**Area Scan (81x91x1):** Interpolated grid: dx=1.200 mm, dy=1.200 mm  
Maximum value of SAR (interpolated) = 0.187 W/kg

**Zoom Scan (8x8x7)/Cube 0:** Measurement grid: dx=5mm, dy=5mm, dz=5mm  
Reference Value = 4.171 V/m; Power Drift = -0.02 dB  
Peak SAR (extrapolated) = 0.231 W/kg  
**SAR(1 g) = 0.139 W/kg; SAR(10 g) = 0.069 W/kg**  
Maximum value of SAR (measured) = 0.195 W/kg



0 dB = 0.195 W/kg = -7.10 dBW/kg

### 13\_WLAN5GHz\_802.11a\_6Mbps\_Right Tilted\_0mm\_Ch56

Communication System: UID 0, 802.11a (0); Frequency: 5280 MHz; Duty Cycle: 1:1.021  
Medium: HSL\_5000 Medium parameters used:  $f = 5280$  MHz;  $\sigma = 4.634$  S/m;  $\epsilon_r = 36.055$ ;  $\rho = 1000$  kg/m<sup>3</sup>

Ambient Temperature : 23.3 °C; Liquid Temperature : 22.9 °C

#### DASY5 Configuration:

- Probe: EX3DV4 - SN7592; ConvF(5.24, 5.24, 5.24); Calibrated: 2020.5.22
- Sensor-Surface: 1.4mm (Mechanical Surface Detection)
- Electronics: DAE4 Sn656; Calibrated: 2019.12.17
- Phantom: SAM1; Type: SAM; Serial: TP-1697
- Measurement SW: DASY52, Version 52.10 (4); SEMCAD X Version 14.6.14 (7483)

**Area Scan (101x91x1):** Interpolated grid: dx=1.000 mm, dy=1.000 mm

Maximum value of SAR (interpolated) = 0.263 W/kg

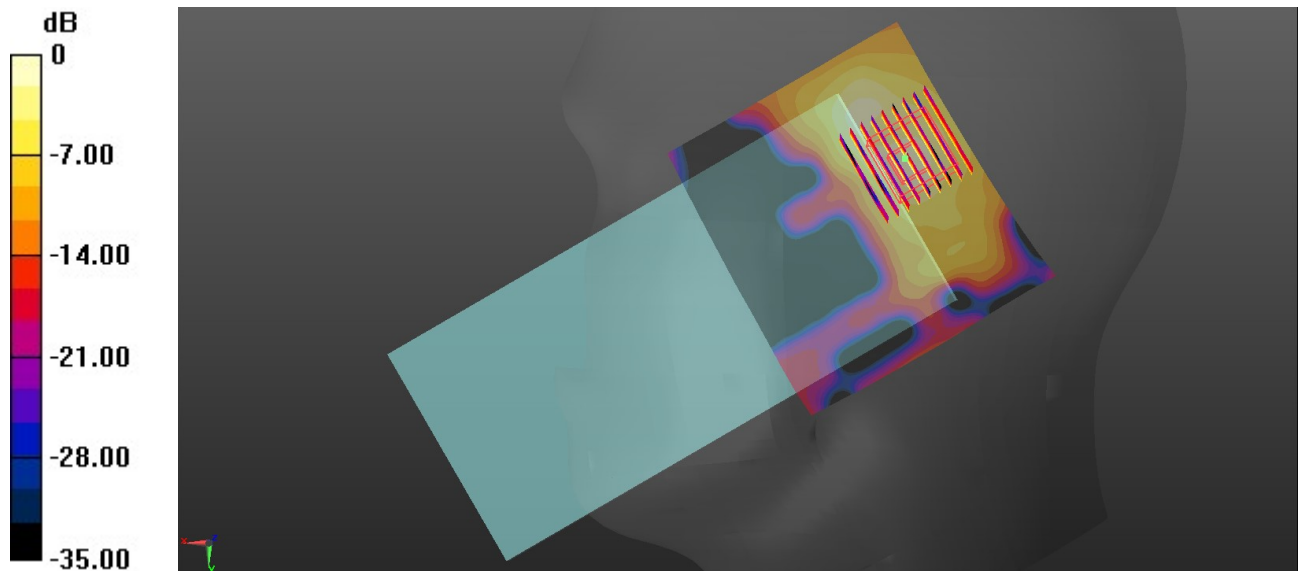
**Zoom Scan (9x9x7)/Cube 0:** Measurement grid: dx=4mm, dy=4mm, dz=1.4mm

Reference Value = 4.468 V/m; Power Drift = -0.08 dB

Peak SAR (extrapolated) = 0.436 W/kg

**SAR(1 g) = 0.121 W/kg; SAR(10 g) = 0.041 W/kg**

Maximum value of SAR (measured) = 0.269 W/kg



0 dB = 0.269 W/kg = -5.70 dBW/kg

### 14\_WLAN5GHz\_802.11a\_6Mbps\_Left Cheek\_0mm\_Ch144

Communication System: UID 0, 802.11a (0); Frequency: 5720 MHz;Duty Cycle: 1:1.021  
Medium: HSL\_5000 Medium parameters used:  $f = 5720$  MHz;  $\sigma = 5.073$  S/m;  $\epsilon_r = 35.453$ ;  $\rho = 1000$  kg/m<sup>3</sup>

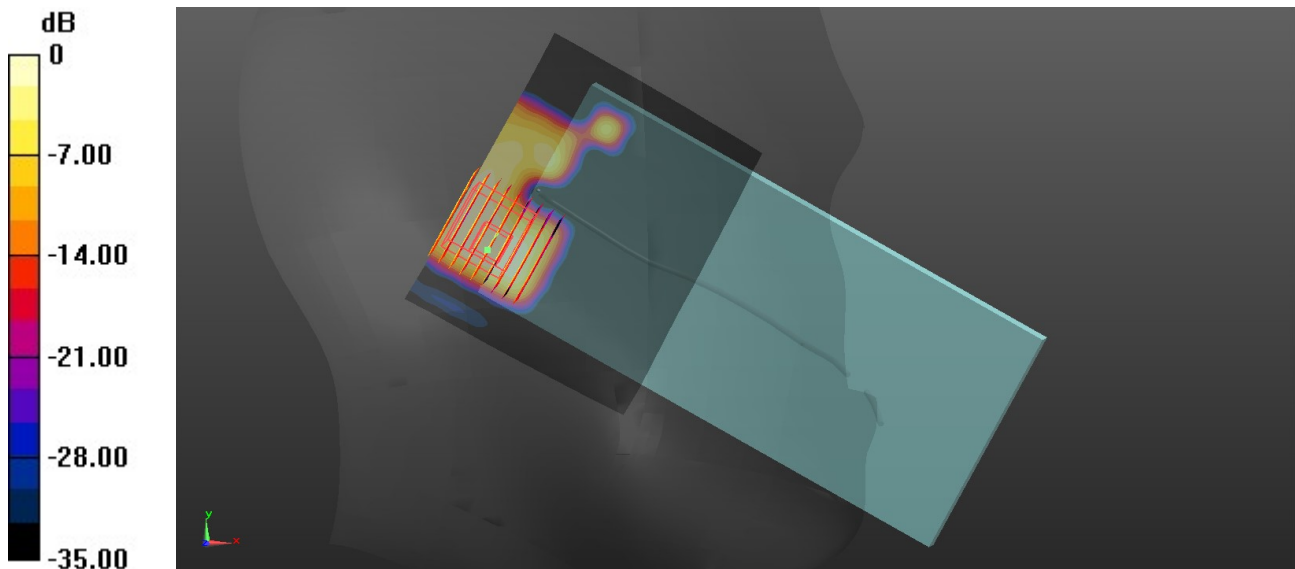
Ambient Temperature : 23.2 °C; Liquid Temperature : 22.6 °C

#### DASY5 Configuration:

- Probe: EX3DV4 - SN7592; ConvF(4.69, 4.69, 4.69); Calibrated: 2020.5.22
- Sensor-Surface: 1.4mm (Mechanical Surface Detection)
- Electronics: DAE4 Sn656; Calibrated: 2019.12.17
- Phantom: SAM1; Type: SAM; Serial: TP-1697
- Measurement SW: DASY52, Version 52.10 (4); SEMCAD X Version 14.6.14 (7483)

**Area Scan (101x81x1):** Interpolated grid: dx=1.000 mm, dy=1.000 mm  
Maximum value of SAR (interpolated) = 0.262 W/kg

**Zoom Scan (9x9x7)/Cube 0:** Measurement grid: dx=4mm, dy=4mm, dz=1.4mm  
Reference Value = 1.447 V/m; Power Drift = 0.01 dB  
Peak SAR (extrapolated) = 0.293 W/kg  
**SAR(1 g) = 0.082 W/kg; SAR(10 g) = 0.030 W/kg**  
Maximum value of SAR (measured) = 0.185 W/kg



0 dB = 0.185 W/kg = -7.33 dBW/kg

### 15\_WLAN5GHz\_802.11a\_6Mbps\_Right Cheek\_0mm\_Ch149

Communication System: UID 0, 802.11a (0); Frequency: 5745 MHz; Duty Cycle: 1:1.021  
Medium: HSL\_5000 Medium parameters used:  $f = 5745$  MHz;  $\sigma = 5.094$  S/m;  $\epsilon_r = 35.396$ ;  $\rho = 1000$  kg/m<sup>3</sup>

Ambient Temperature : 23.2 °C; Liquid Temperature : 22.6 °C

#### DASY5 Configuration:

- Probe: EX3DV4 - SN7592; ConvF(4.69, 4.69, 4.69); Calibrated: 2020.5.22
- Sensor-Surface: 1.4mm (Mechanical Surface Detection)
- Electronics: DAE4 Sn656; Calibrated: 2019.12.17
- Phantom: SAM1; Type: SAM; Serial: TP-1697
- Measurement SW: DASY52, Version 52.10 (4); SEMCAD X Version 14.6.14 (7483)

**Area Scan (101x81x1):** Interpolated grid: dx=1.000 mm, dy=1.000 mm

Maximum value of SAR (interpolated) = 0.194 W/kg

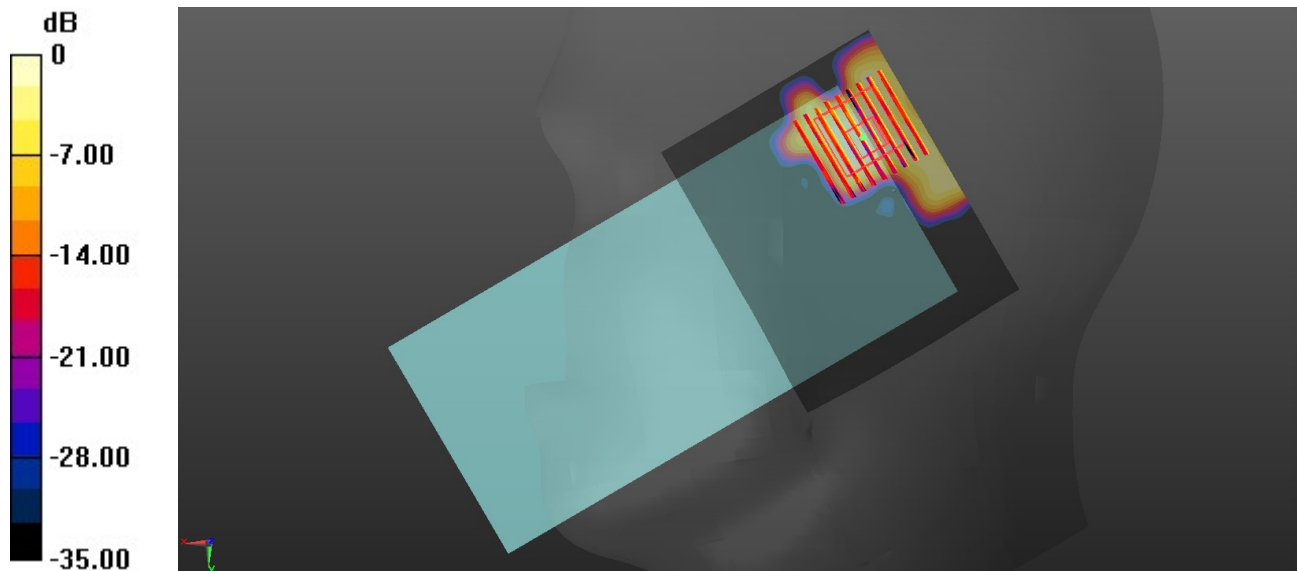
**Zoom Scan (9x9x7)/Cube 0:** Measurement grid: dx=4mm, dy=4mm, dz=1.4mm

Reference Value = 0.7370 V/m; Power Drift = -0.01 dB

Peak SAR (extrapolated) = 0.318 W/kg

**SAR(1 g) = 0.069 W/kg; SAR(10 g) = 0.024 W/kg**

Maximum value of SAR (measured) = 0.192 W/kg



0 dB = 0.192 W/kg = -7.17 dBW/kg

**16\_GSM850\_GPRS 3Tx slots\_Back\_5mm\_Ch128**

Communication System: UID 0, GSM850 (0); Frequency: 824.2 MHz;Duty Cycle: 1:2.77  
 Medium: HSL\_850 Medium parameters used:  $f = 824.2$  MHz;  $\sigma = 0.884$  S/m;  $\epsilon_r = 41.781$ ;  $\rho = 1000$  kg/m<sup>3</sup>

Ambient Temperature : 23.2 °C; Liquid Temperature : 22.8 °C

DASY5 Configuration:

- Probe: EX3DV4 - SN7592; ConvF(10.05, 10.05, 10.05); Calibrated: 2020.5.22
- Sensor-Surface: 1.4mm (Mechanical Surface Detection)
- Electronics: DAE4 Sn656; Calibrated: 2019.12.17
- Phantom: SAM1; Type: SAM; Serial: TP-1697
- Measurement SW: DASY52, Version 52.10 (4); SEMCAD X Version 14.6.14 (7483)

**Area Scan (71x71x1):** Interpolated grid: dx=1.500 mm, dy=1.500 mm

Maximum value of SAR (interpolated) = 0.934 W/kg

**Zoom Scan (5x5x7)/Cube 0:** Measurement grid: dx=8mm, dy=8mm, dz=5mm

Reference Value = 17.45 V/m; Power Drift = -0.06 dB

Peak SAR (extrapolated) = 1.08 W/kg

**SAR(1 g) = 0.499 W/kg; SAR(10 g) = 0.290 W/kg**

Maximum value of SAR (measured) = 0.765 W/kg

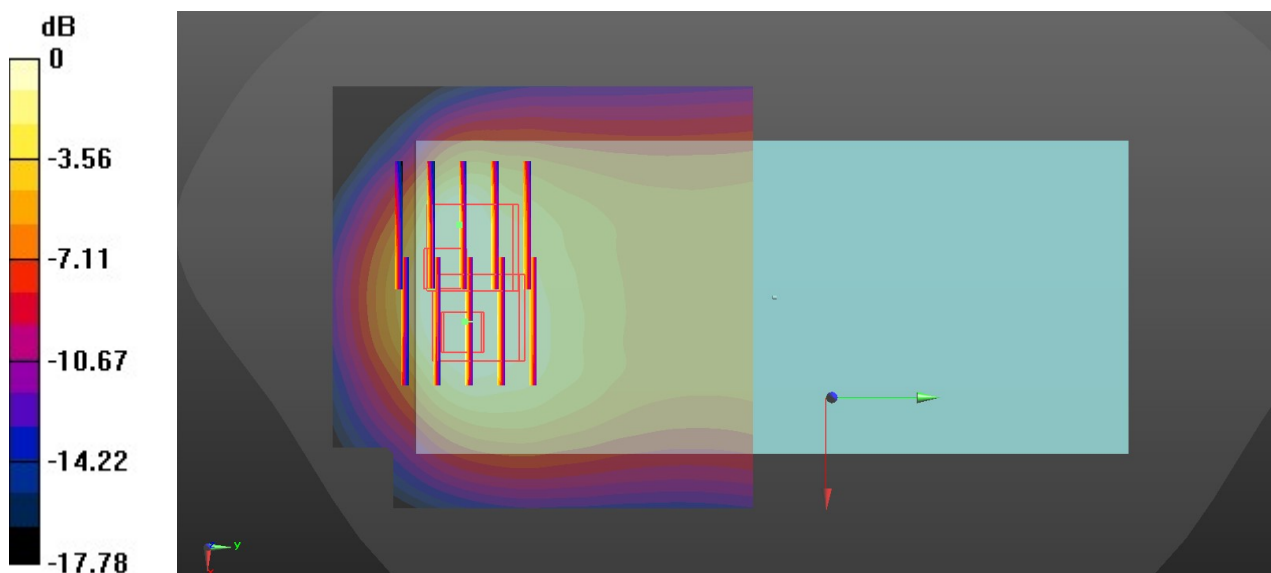
**Zoom Scan (5x5x7)/Cube 1:** Measurement grid: dx=8mm, dy=8mm, dz=5mm

Reference Value = 17.45 V/m; Power Drift = -0.06 dB

Peak SAR (extrapolated) = 0.931 W/kg

**SAR(1 g) = 0.429 W/kg; SAR(10 g) = 0.254 W/kg**

Maximum value of SAR (measured) = 0.705 W/kg



0 dB = 0.705 W/kg = -1.52 dBW/kg

### 17\_GSM1900\_GPRS 3Tx slots\_Back\_5mm\_Ch810

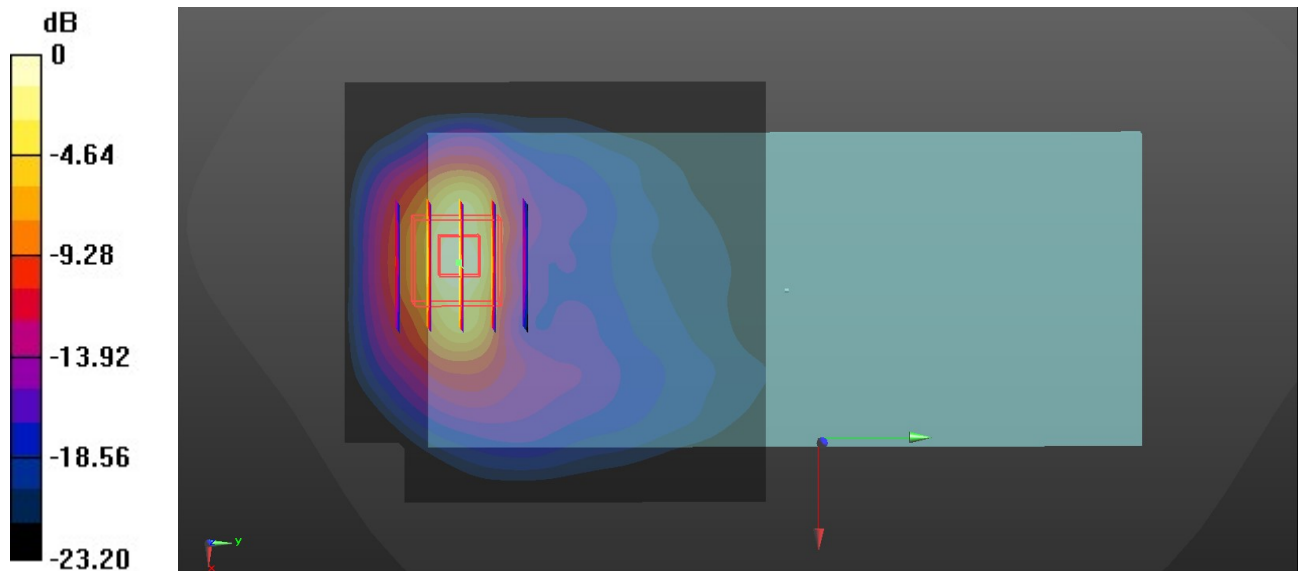
Communication System: UID 0, PCS (0); Frequency: 1909.8 MHz; Duty Cycle: 1:2.77  
Medium: HSL\_1900 Medium parameters used:  $f = 1910$  MHz;  $\sigma = 1.441$  S/m;  $\epsilon_r = 39.106$ ;  $\rho = 1000$  kg/m<sup>3</sup>  
Ambient Temperature : 23.2 °C; Liquid Temperature : 22.9 °C

#### DASY5 Configuration:

- Probe: EX3DV4 - SN7592; ConvF(8.22, 8.22, 8.22); Calibrated: 2020.5.22
- Sensor-Surface: 1.4mm (Mechanical Surface Detection)
- Electronics: DAE4 Sn656; Calibrated: 2019.12.17
- Phantom: SAM1; Type: SAM; Serial: TP-1697
- Measurement SW: DASY52, Version 52.10 (4); SEMCAD X Version 14.6.14 (7483)

**Area Scan (71x71x1):** Interpolated grid: dx=1.500 mm, dy=1.500 mm  
Maximum value of SAR (interpolated) = 0.917 W/kg

**Zoom Scan (5x5x7)/Cube 0:** Measurement grid: dx=8mm, dy=8mm, dz=5mm  
Reference Value = 1.876 V/m; Power Drift = -0.02 dB  
Peak SAR (extrapolated) = 1.11 W/kg  
**SAR(1 g) = 0.541 W/kg; SAR(10 g) = 0.242 W/kg**  
Maximum value of SAR (measured) = 0.902 W/kg



0 dB = 0.902 W/kg = -0.45 dBW/kg

### 18\_WCDMA II\_RMC 12.2Kbps\_Back\_5mm\_Ch9262

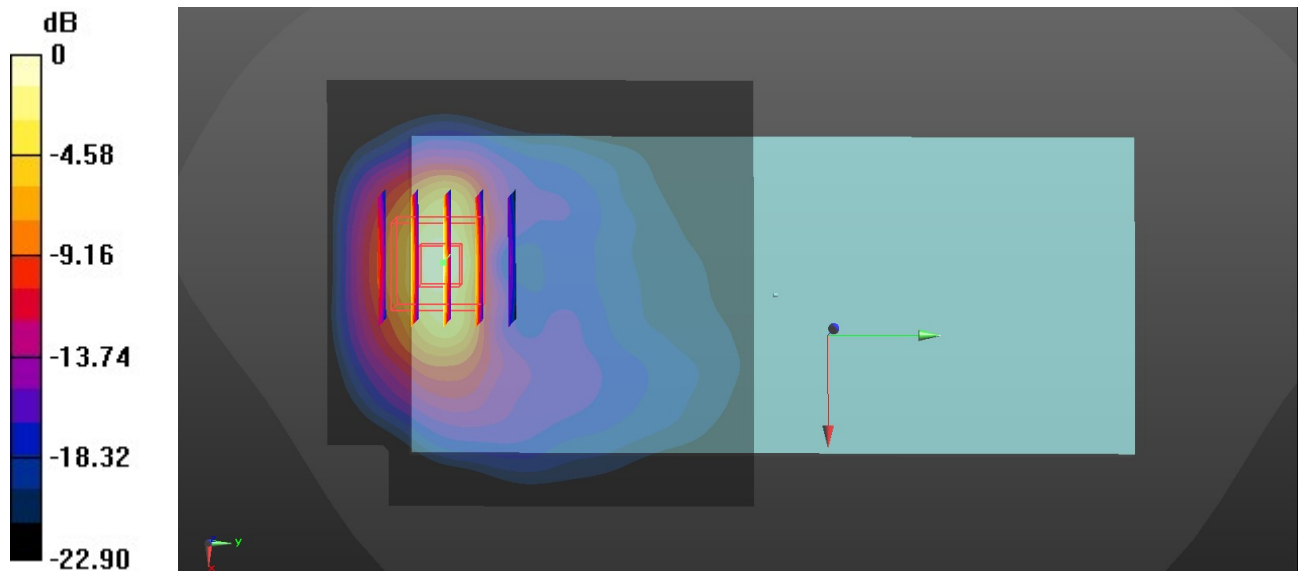
Communication System: UID 0, WCDMA (0); Frequency: 1852.4 MHz; Duty Cycle: 1:1  
Medium: HSL\_1900 Medium parameters used:  $f = 1852.4$  MHz;  $\sigma = 1.41$  S/m;  $\epsilon_r = 39.182$ ;  $\rho = 1000$  kg/m<sup>3</sup>  
Ambient Temperature : 23.2 °C; Liquid Temperature : 22.9 °C

#### DASY5 Configuration:

- Probe: EX3DV4 - SN7592; ConvF(8.22, 8.22, 8.22); Calibrated: 2020.5.22
- Sensor-Surface: 1.4mm (Mechanical Surface Detection)
- Electronics: DAE4 Sn656; Calibrated: 2019.12.17
- Phantom: SAM1; Type: SAM; Serial: TP-1697
- Measurement SW: DASY52, Version 52.10 (4); SEMCAD X Version 14.6.14 (7483)

**Area Scan (71x71x1):** Interpolated grid:  $dx=1.500$  mm,  $dy=1.500$  mm  
Maximum value of SAR (interpolated) = 0.735 W/kg

**Zoom Scan (5x5x7)/Cube 0:** Measurement grid:  $dx=8$ mm,  $dy=8$ mm,  $dz=5$ mm  
Reference Value = 1.831 V/m; Power Drift = -0.06 dB  
Peak SAR (extrapolated) = 0.900 W/kg  
**SAR(1 g) = 0.435 W/kg; SAR(10 g) = 0.195 W/kg**  
Maximum value of SAR (measured) = 0.733 W/kg



0 dB = 0.733 W/kg = -1.35 dBW/kg

### 19\_WCDMA IV\_RMC 12.2Kbps\_Back\_5mm\_Ch1513

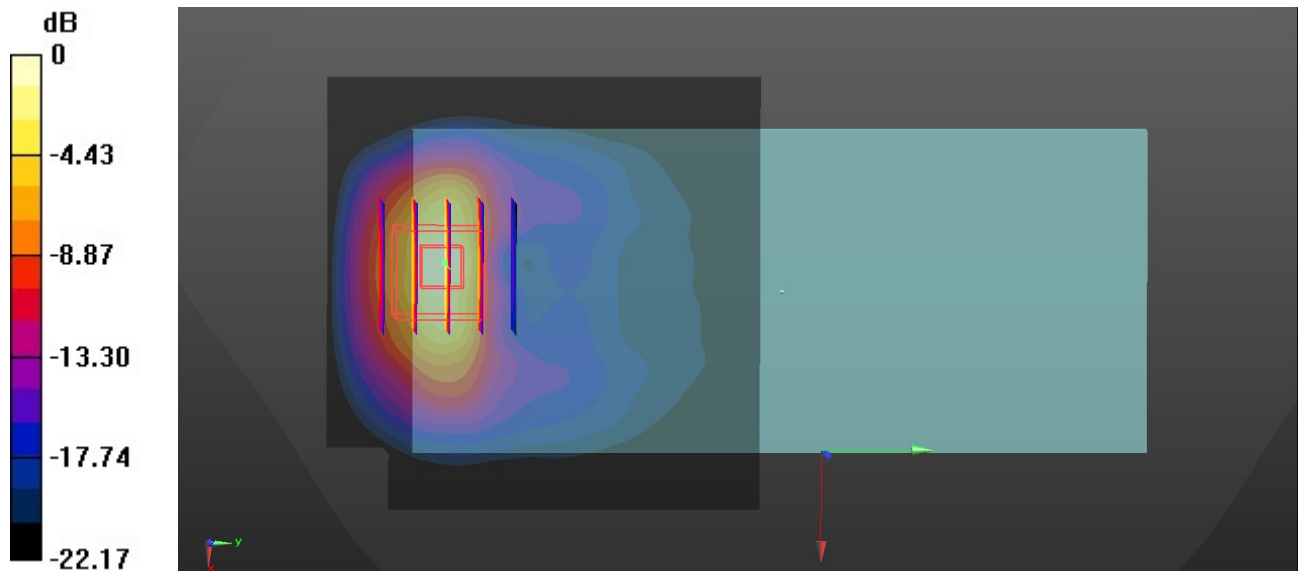
Communication System: UID 0, WCDMA (0); Frequency: 1752.6 MHz; Duty Cycle: 1:1  
Medium: HSL\_1750 Medium parameters used:  $f = 1753$  MHz;  $\sigma = 1.356$  S/m;  $\epsilon_r = 39.371$ ;  $\rho = 1000$  kg/m<sup>3</sup>  
Ambient Temperature : 23.3 °C; Liquid Temperature : 22.8 °C

#### DASY5 Configuration:

- Probe: EX3DV4 - SN7592; ConvF(8.41, 8.41, 8.41); Calibrated: 2020.5.22
- Sensor-Surface: 1.4mm (Mechanical Surface Detection)
- Electronics: DAE4 Sn656; Calibrated: 2019.12.17
- Phantom: SAM1; Type: SAM; Serial: TP-1697
- Measurement SW: DASY52, Version 52.10 (4); SEMCAD X Version 14.6.14 (7483)

**Area Scan (71x71x1):** Interpolated grid: dx=1.500 mm, dy=1.500 mm  
Maximum value of SAR (interpolated) = 0.686 W/kg

**Zoom Scan (5x5x7)/Cube 0:** Measurement grid: dx=8mm, dy=8mm, dz=5mm  
Reference Value = 1.518 V/m; Power Drift = 0.01 dB  
Peak SAR (extrapolated) = 0.859 W/kg  
**SAR(1 g) = 0.415 W/kg; SAR(10 g) = 0.190 W/kg**  
Maximum value of SAR (measured) = 0.688 W/kg



0 dB = 0.688 W/kg = -1.62 dBW/kg

**20\_WCDMA V\_RMC 12.2Kbps\_Back\_5mm\_Ch4233**

Communication System: UID 0, WCDMA (0); Frequency: 846.6 MHz; Duty Cycle: 1:1  
 Medium: HSL\_850 Medium parameters used:  $f = 847$  MHz;  $\sigma = 0.905$  S/m;  $\epsilon_r = 41.475$ ;  $\rho = 1000$  kg/m<sup>3</sup>

Ambient Temperature : 23.2 °C; Liquid Temperature : 22.8 °C

DASY5 Configuration:

- Probe: EX3DV4 - SN7592; ConvF(10.05, 10.05, 10.05); Calibrated: 2020.5.22
- Sensor-Surface: 1.4mm (Mechanical Surface Detection)
- Electronics: DAE4 Sn656; Calibrated: 2019.12.17
- Phantom: SAM1; Type: SAM; Serial: TP-1697
- Measurement SW: DASY52, Version 52.10 (4); SEMCAD X Version 14.6.14 (7483)

**Area Scan (71x71x1):** Interpolated grid: dx=1.500 mm, dy=1.500 mm

Maximum value of SAR (interpolated) = 0.925 W/kg

**Zoom Scan (5x5x7)/Cube 0:** Measurement grid: dx=8mm, dy=8mm, dz=5mm

Reference Value = 15.60 V/m; Power Drift = -0.06 dB

Peak SAR (extrapolated) = 1.21 W/kg

**SAR(1 g) = 0.555 W/kg; SAR(10 g) = 0.322 W/kg**

Maximum value of SAR (measured) = 0.885 W/kg

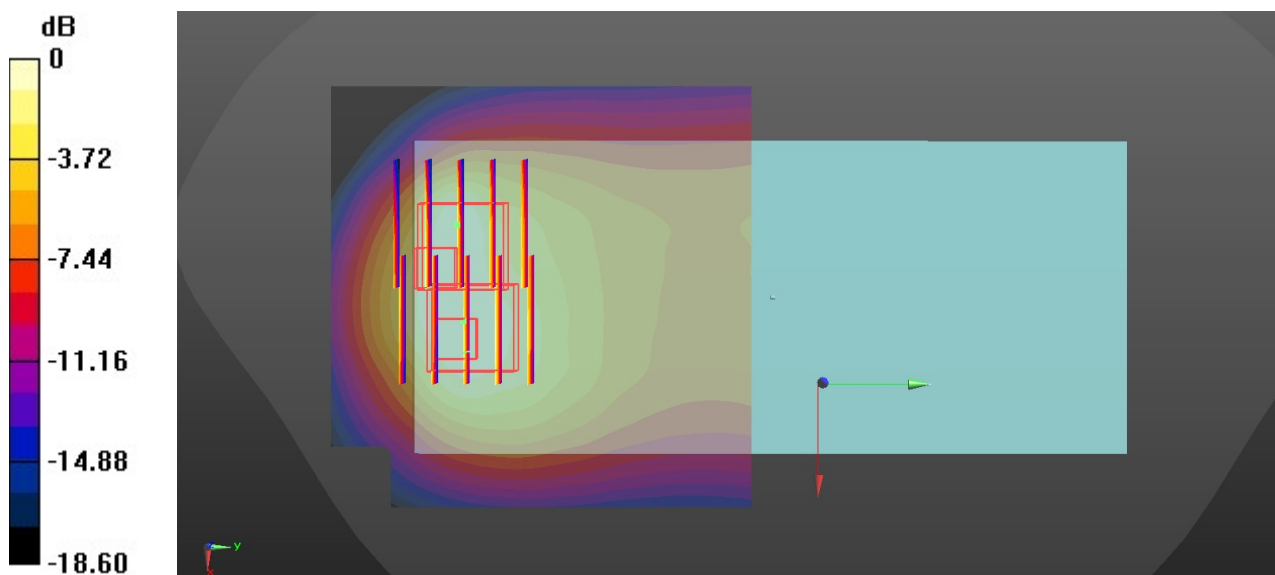
**Zoom Scan (5x5x7)/Cube 1:** Measurement grid: dx=8mm, dy=8mm, dz=5mm

Reference Value = 15.60 V/m; Power Drift = -0.06 dB

Peak SAR (extrapolated) = 1.06 W/kg

**SAR(1 g) = 0.480 W/kg; SAR(10 g) = 0.273 W/kg**

Maximum value of SAR (measured) = 0.829 W/kg



0 dB = 0.829 W/kg = -0.81 dBW/kg

**21\_LTE Band 2\_20M\_QPSK\_1RB\_0Offset\_Back\_5mm\_Ch18700**

Communication System: UID 0, LTE-FDD (0); Frequency: 1860 MHz; Duty Cycle: 1:1  
 Medium: HSL\_1900 Medium parameters used:  $f = 1860$  MHz;  $\sigma = 1.414$  S/m;  $\epsilon_r = 39.176$ ;  $\rho = 1000$  kg/m<sup>3</sup>

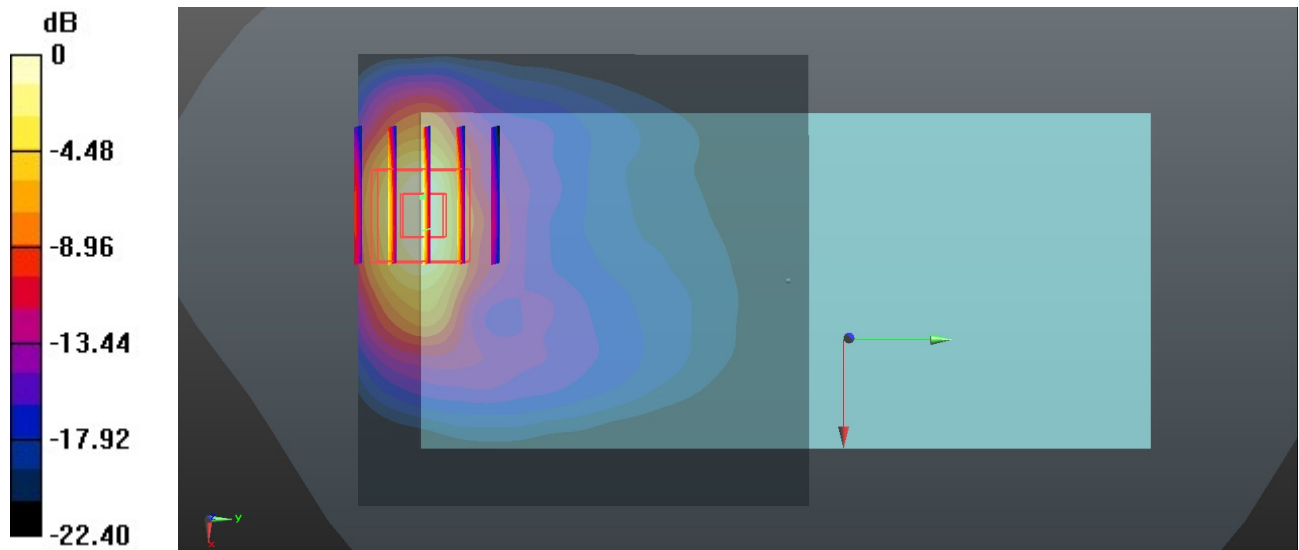
Ambient Temperature : 23.2 °C; Liquid Temperature : 22.9 °C

DASY5 Configuration:

- Probe: EX3DV4 - SN7592; ConvF(8.22, 8.22, 8.22); Calibrated: 2020.5.22
- Sensor-Surface: 1.4mm (Mechanical Surface Detection)
- Electronics: DAE4 Sn656; Calibrated: 2019.12.17
- Phantom: SAM1; Type: SAM; Serial: TP-1697
- Measurement SW: DASY52, Version 52.10 (4); SEMCAD X Version 14.6.14 (7483)

**Area Scan (71x71x1):** Interpolated grid: dx=1.500 mm, dy=1.500 mm  
 Maximum value of SAR (interpolated) = 0.670 W/kg

**Zoom Scan (5x5x7)/Cube 0:** Measurement grid: dx=8mm, dy=8mm, dz=5mm  
 Reference Value = 1.958 V/m; Power Drift = -0.02 dB  
 Peak SAR (extrapolated) = 1.11 W/kg  
**SAR(1 g) = 0.558 W/kg; SAR(10 g) = 0.251 W/kg**  
 Maximum value of SAR (measured) = 0.704 W/kg



0 dB = 0.704 W/kg = -1.52 dBW/kg

**22\_LTE Band 5\_10M\_QPSK\_1RB\_0Offset\_Back\_5mm\_Ch20525**

Communication System: UID 0, LTE-FDD (0); Frequency: 836.5 MHz; Duty Cycle: 1:1  
 Medium: HSL\_850 Medium parameters used:  $f = 836.5$  MHz;  $\sigma = 0.895$  S/m;  $\epsilon_r = 41.621$ ;  $\rho = 1000$  kg/m<sup>3</sup>  
 Ambient Temperature : 23.2 °C; Liquid Temperature : 22.8 °C

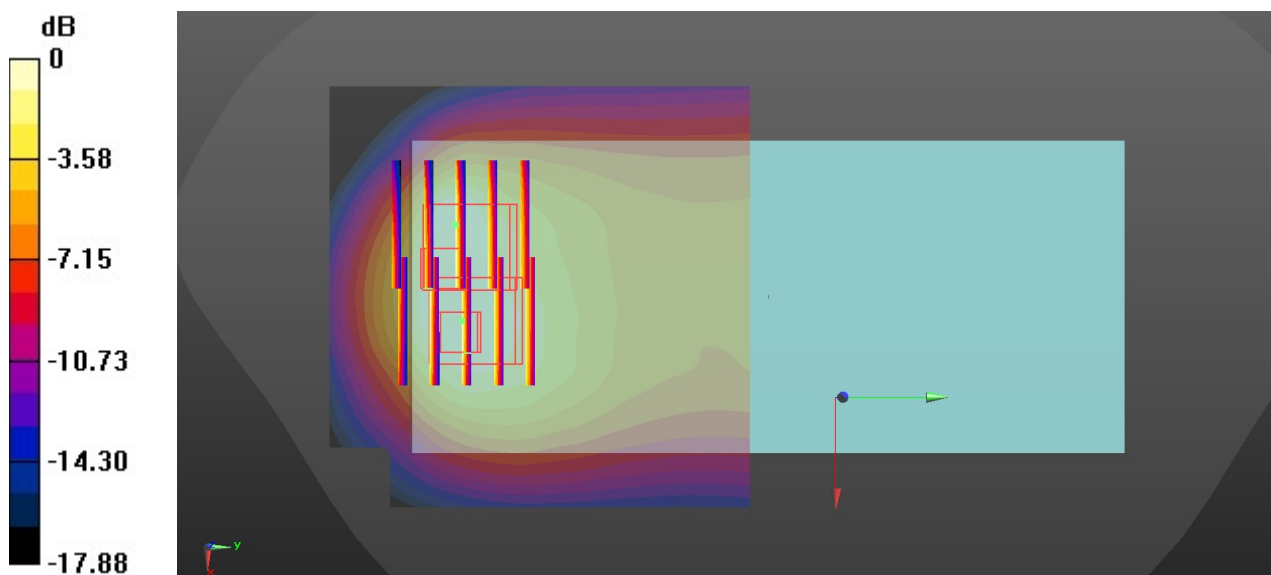
**DASY5 Configuration:**

- Probe: EX3DV4 - SN7592; ConvF(10.05, 10.05, 10.05); Calibrated: 2020.5.22
- Sensor-Surface: 1.4mm (Mechanical Surface Detection)
- Electronics: DAE4 Sn656; Calibrated: 2019.12.17
- Phantom: SAM1; Type: SAM; Serial: TP-1697
- Measurement SW: DASY52, Version 52.10 (4); SEMCAD X Version 14.6.14 (7483)

**Area Scan (71x71x1):** Interpolated grid: dx=1.500 mm, dy=1.500 mm  
 Maximum value of SAR (interpolated) = 1.19 W/kg

**Zoom Scan (5x5x7)/Cube 0:** Measurement grid: dx=8mm, dy=8mm, dz=5mm  
 Reference Value = 17.71 V/m; Power Drift = 0.03 dB  
 Peak SAR (extrapolated) = 1.42 W/kg  
**SAR(1 g) = 0.657 W/kg; SAR(10 g) = 0.383 W/kg**  
 Maximum value of SAR (measured) = 1.01 W/kg

**Zoom Scan (5x5x7)/Cube 1:** Measurement grid: dx=8mm, dy=8mm, dz=5mm  
 Reference Value = 17.71 V/m; Power Drift = 0.03 dB  
 Peak SAR (extrapolated) = 1.25 W/kg  
**SAR(1 g) = 0.578 W/kg; SAR(10 g) = 0.341 W/kg**  
 Maximum value of SAR (measured) = 0.944 W/kg



0 dB = 0.944 W/kg = -0.25 dBW/kg

**23\_LTE Band 7\_20M\_QPSK\_1RB\_0Offset\_Back\_5mm\_Ch21100**

Communication System: UID 0, LTE-FDD (0); Frequency: 2535 MHz;Duty Cycle: 1:1  
 Medium: HSL\_2600 Medium parameters used:  $f = 2535$  MHz;  $\sigma = 1.869$  S/m;  $\epsilon_r = 38.446$ ;  $\rho = 1000$  kg/m<sup>3</sup>

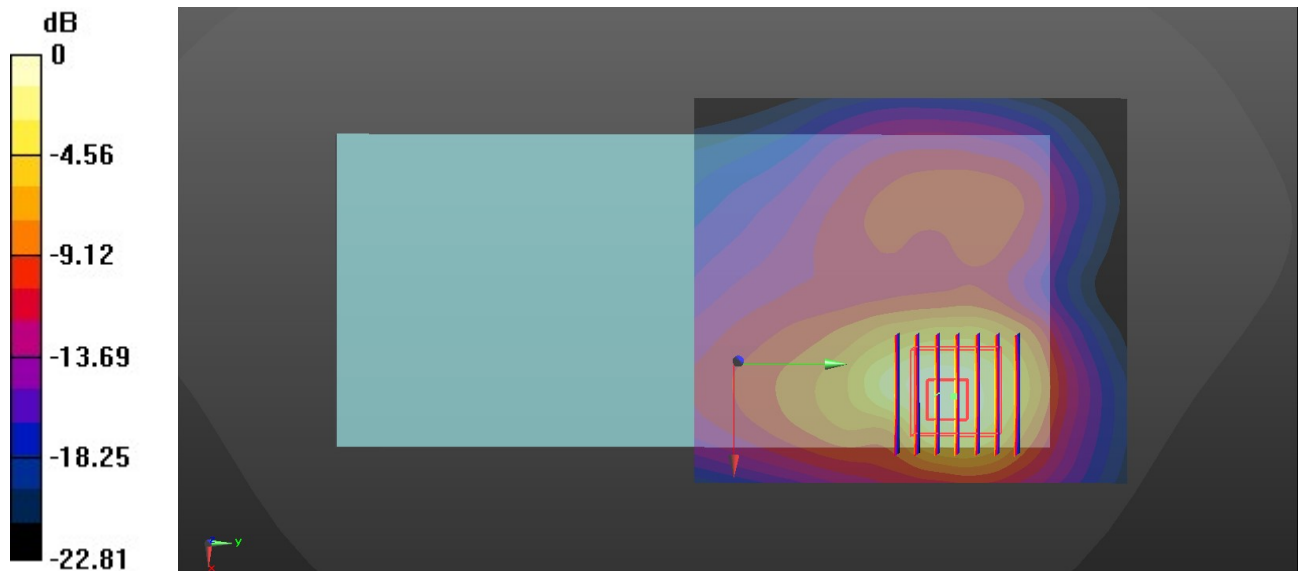
Ambient Temperature : 23.3 °C; Liquid Temperature : 22.6 °C

DASY5 Configuration:

- Probe: EX3DV4 - SN7592; ConvF(7.31, 7.31, 7.31); Calibrated: 2020.5.22
- Sensor-Surface: 1.4mm (Mechanical Surface Detection)
- Electronics: DAE4 Sn656; Calibrated: 2019.12.17
- Phantom: SAM1; Type: SAM; Serial: TP-1697
- Measurement SW: DASY52, Version 52.10 (4); SEMCAD X Version 14.6.14 (7483)

**Area Scan (81x91x1):** Interpolated grid: dx=1.200 mm, dy=1.200 mm  
 Maximum value of SAR (interpolated) = 1.24 W/kg

**Zoom Scan (7x7x7)/Cube 0:** Measurement grid: dx=5mm, dy=5mm, dz=5mm  
 Reference Value = 5.108 V/m; Power Drift = -0.05 dB  
 Peak SAR (extrapolated) = 1.72 W/kg  
**SAR(1 g) = 0.740 W/kg; SAR(10 g) = 0.344 W/kg**  
 Maximum value of SAR (measured) = 1.28 W/kg



0 dB = 1.28 W/kg = 1.07 dBW/kg

**24\_LTE Band 66\_20M\_QPSK\_50RB\_0Offset\_Back\_5mm\_Ch132572**

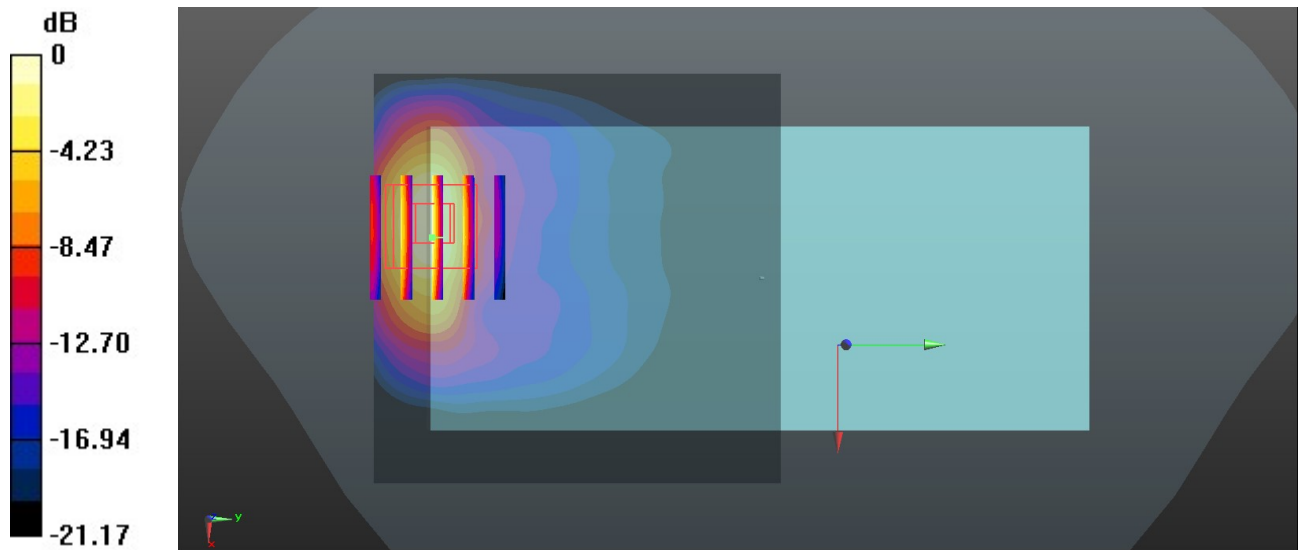
Communication System: UID 0, LTE-FDD (0); Frequency: 1770 MHz;Duty Cycle: 1:1  
 Medium: HSL\_1750 Medium parameters used:  $f = 1770$  MHz;  $\sigma = 1.365$  S/m;  $\epsilon_r = 39.341$ ;  $\rho = 1000$  kg/m<sup>3</sup>  
 Ambient Temperature : 23.3 °C; Liquid Temperature : 22.8 °C

DASY5 Configuration:

- Probe: EX3DV4 - SN7592; ConvF(8.41, 8.41, 8.41); Calibrated: 2020.5.22
- Sensor-Surface: 1.4mm (Mechanical Surface Detection)
- Electronics: DAE4 Sn656; Calibrated: 2019.12.17
- Phantom: SAM1; Type: SAM; Serial: TP-1697
- Measurement SW: DASY52, Version 52.10 (4); SEMCAD X Version 14.6.14 (7483)

**Area Scan (71x71x1):** Interpolated grid: dx=1.500 mm, dy=1.500 mm  
 Maximum value of SAR (interpolated) = 0.483 W/kg

**Zoom Scan (5x5x7)/Cube 0:** Measurement grid: dx=8mm, dy=8mm, dz=5mm  
 Reference Value = 1.354 V/m; Power Drift = 0.08 dB  
 Peak SAR (extrapolated) = 0.822 W/kg  
**SAR(1 g) = 0.412 W/kg; SAR(10 g) = 0.189 W/kg**  
 Maximum value of SAR (measured) = 0.519 W/kg



0 dB = 0.519 W/kg = -2.85 dBW/kg

**25\_LTE Band 41\_20M\_QPSK\_50RB\_0Offset\_Back\_5mm\_Ch40140**

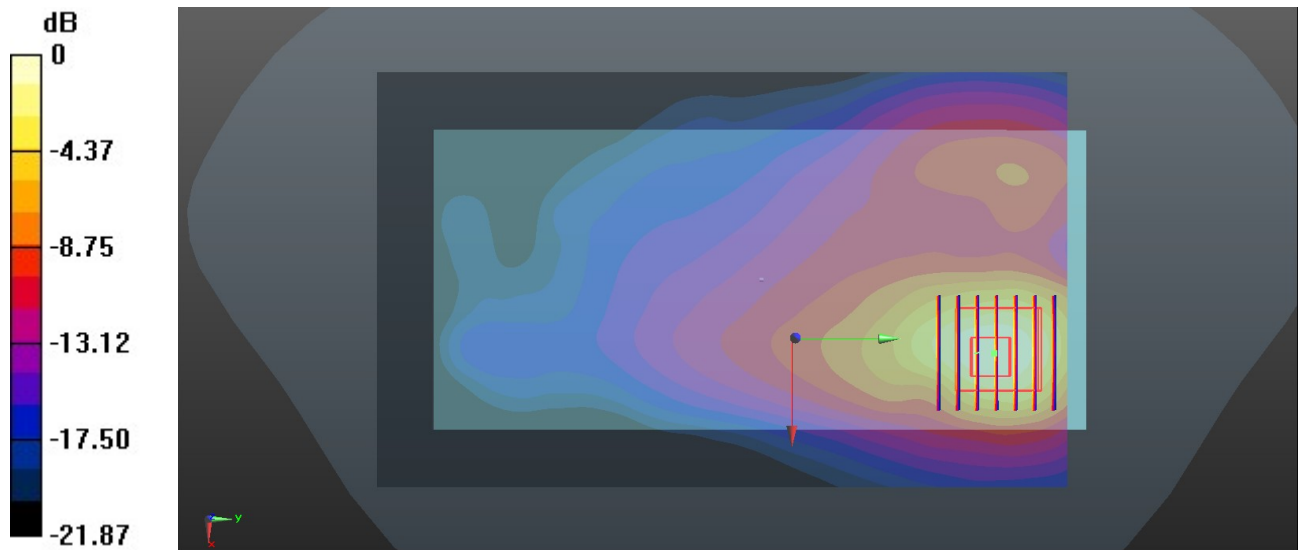
Communication System: UID 0, LTE-TDD (0); Frequency: 2545 MHz; Duty Cycle: 1:1.59  
 Medium: HSL\_2600 Medium parameters used:  $f = 2545$  MHz;  $\sigma = 1.873$  S/m;  $\epsilon_r = 38.418$ ;  $\rho = 1000$  kg/m<sup>3</sup>  
 Ambient Temperature : 23.3 °C; Liquid Temperature : 22.6 °C

**DASY5 Configuration:**

- Probe: EX3DV4 - SN7592; ConvF(7.31, 7.31, 7.31); Calibrated: 2020.5.22
- Sensor-Surface: 1.4mm (Mechanical Surface Detection)
- Electronics: DAE4 Sn656; Calibrated: 2019.12.17
- Phantom: SAM1; Type: SAM; Serial: TP-1697
- Measurement SW: DASY52, Version 52.10 (4); SEMCAD X Version 14.6.14 (7483)

**Area Scan (91x151x1):** Interpolated grid: dx=1.200 mm, dy=1.200 mm  
 Maximum value of SAR (interpolated) = 0.965 W/kg

**Zoom Scan (7x7x7)/Cube 0:** Measurement grid: dx=5mm, dy=5mm, dz=5mm  
 Reference Value = 5.708 V/m; Power Drift = -0.03 dB  
 Peak SAR (extrapolated) = 1.65 W/kg  
**SAR(1 g) = 0.720 W/kg; SAR(10 g) = 0.340 W/kg**  
 Maximum value of SAR (measured) = 0.938 W/kg



0 dB = 0.938 W/kg = -0.28 dBW/kg

## 26\_WLAN2.4GHz\_802.11b 1Mbps\_Back\_5mm\_Ch11

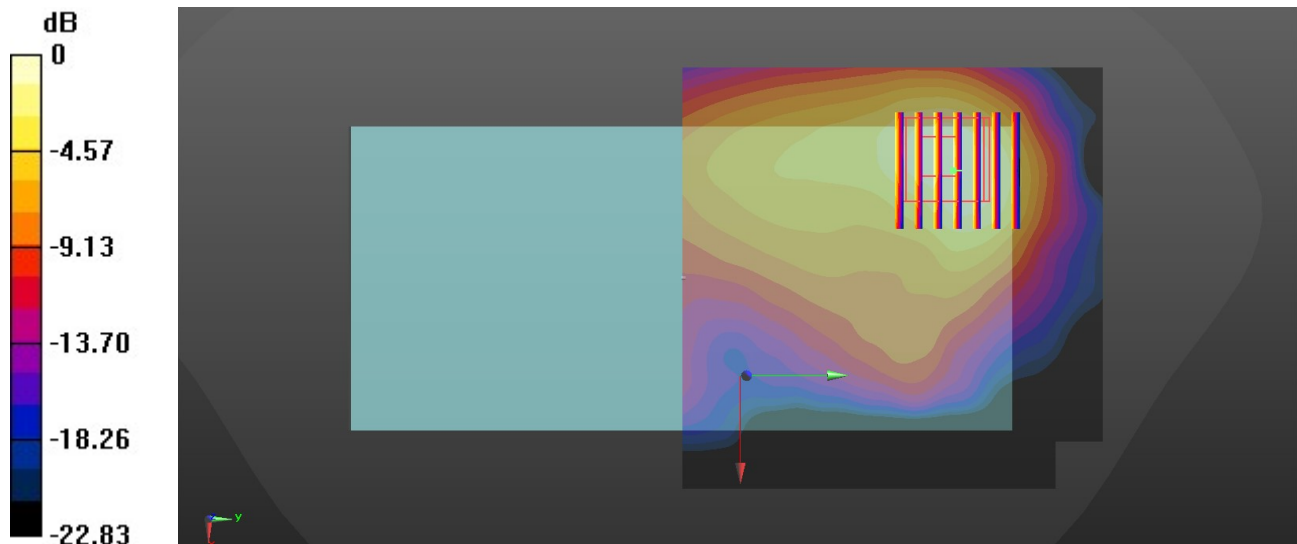
Communication System: UID 0, 802.11b (0); Frequency: 2462 MHz; Duty Cycle: 1:1  
Medium: HSL\_2450 Medium parameters used:  $f = 2462$  MHz;  $\sigma = 1.818$  S/m;  $\epsilon_r = 38.465$ ;  $\rho = 1000$  kg/m<sup>3</sup>  
Ambient Temperature : 23.1 °C; Liquid Temperature : 22.8 °C

### DASY5 Configuration:

- Probe: EX3DV4 - SN7592; ConvF(7.57, 7.57, 7.57); Calibrated: 2020.5.22
- Sensor-Surface: 1.4mm (Mechanical Surface Detection)
- Electronics: DAE4 Sn656; Calibrated: 2019.12.17
- Phantom: SAM1; Type: SAM; Serial: TP-1697
- Measurement SW: DASY52, Version 52.10 (4); SEMCAD X Version 14.6.14 (7483)

**Area Scan (91x91x1):** Interpolated grid: dx=1.200 mm, dy=1.200 mm  
Maximum value of SAR (interpolated) = 0.365 W/kg

**Zoom Scan (7x7x7)/Cube 0:** Measurement grid: dx=5mm, dy=5mm, dz=5mm  
Reference Value = 4.229 V/m; Power Drift = 0.09 dB  
Peak SAR (extrapolated) = 0.479 W/kg  
**SAR(1 g) = 0.233 W/kg; SAR(10 g) = 0.119 W/kg**  
Maximum value of SAR (measured) = 0.369 W/kg



0 dB = 0.369 W/kg = -4.33 dBW/kg

### 27\_Bluetooth\_1Mbps\_Back\_5mm\_Ch39

Communication System: UID 0, Bluetooth (0); Frequency: 2441 MHz; Duty Cycle: 1:1.304  
Medium: HSL\_2450 Medium parameters used:  $f = 2441$  MHz;  $\sigma = 1.802$  S/m;  $\epsilon_r = 38.556$ ;  $\rho = 1000$  kg/m<sup>3</sup>

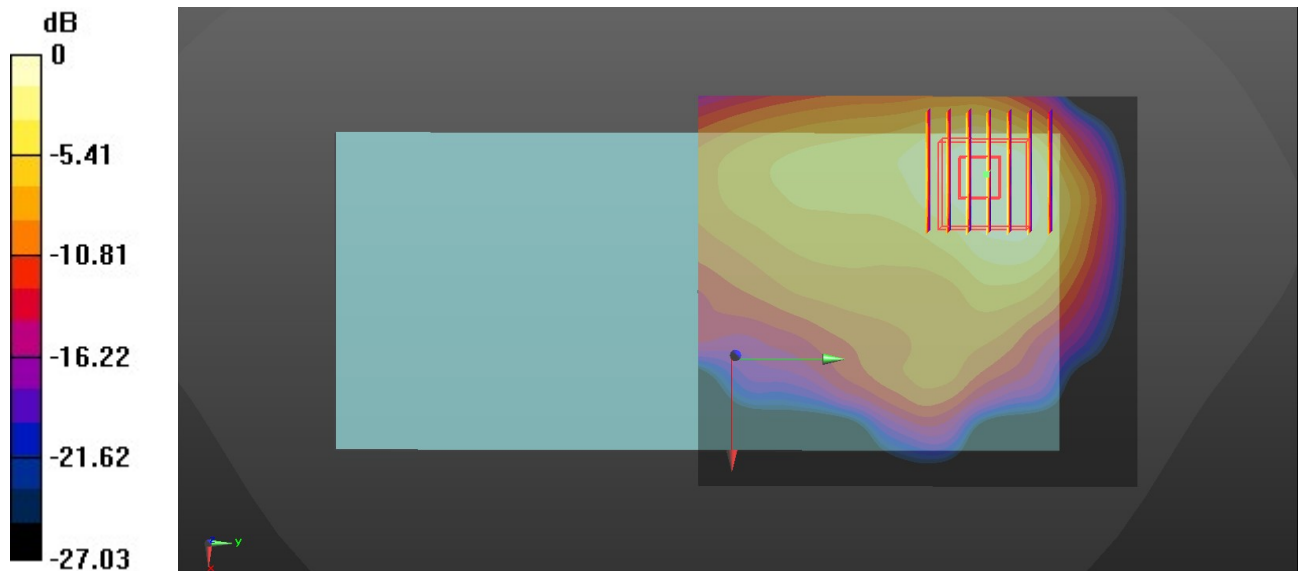
Ambient Temperature : 23.1 °C; Liquid Temperature : 22.8 °C

DASY5 Configuration:

- Probe: EX3DV4 - SN7592; ConvF(7.57, 7.57, 7.57); Calibrated: 2020.5.22
- Sensor-Surface: 1.4mm (Mechanical Surface Detection)
- Electronics: DAE4 Sn656; Calibrated: 2019.12.17
- Phantom: SAM1; Type: SAM; Serial: TP-1697
- Measurement SW: DASY52, Version 52.10 (4); SEMCAD X Version 14.6.14 (7483)

**Area Scan (81x91x1):** Interpolated grid: dx=1.200 mm, dy=1.200 mm  
Maximum value of SAR (interpolated) = 0.121 W/kg

**Zoom Scan (7x7x7)/Cube 0:** Measurement grid: dx=5mm, dy=5mm, dz=5mm  
Reference Value = 2.329 V/m; Power Drift = 0.02 dB  
Peak SAR (extrapolated) = 0.153 W/kg  
**SAR(1 g) = 0.074 W/kg; SAR(10 g) = 0.037 W/kg**  
Maximum value of SAR (measured) = 0.118 W/kg



0 dB = 0.118 W/kg = -9.28 dBW/kg

### 28\_WLAN5GHz\_802.11a\_6Mbps\_Back\_5mm\_Ch40

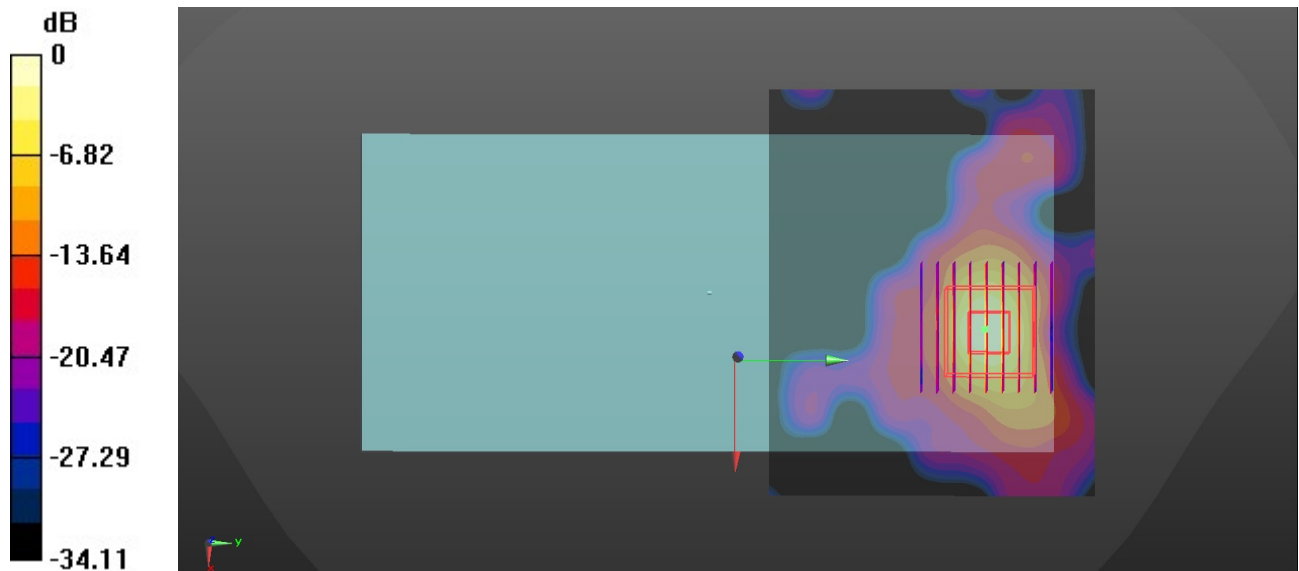
Communication System: UID 0, 802.11a (0); Frequency: 5200 MHz; Duty Cycle: 1:1.021  
Medium: HSL\_5000 Medium parameters used:  $f = 5200$  MHz;  $\sigma = 4.541$  S/m;  $\epsilon_r = 36.17$ ;  $\rho = 1000$  kg/m<sup>3</sup>  
Ambient Temperature : 23.3 °C; Liquid Temperature : 22.9 °C

#### DASY5 Configuration:

- Probe: EX3DV4 - SN7592; ConvF(5.24, 5.24, 5.24); Calibrated: 2020.5.22
- Sensor-Surface: 1.4mm (Mechanical Surface Detection)
- Electronics: DAE4 Sn656; Calibrated: 2019.12.17
- Phantom: SAM1; Type: SAM; Serial: TP-1697
- Measurement SW: DASY52, Version 52.10 (4); SEMCAD X Version 14.6.14 (7483)

**Area Scan (101x81x1):** Interpolated grid: dx=1.000 mm, dy=1.000 mm  
Maximum value of SAR (interpolated) = 0.628 W/kg

**Zoom Scan (9x9x7)/Cube 0:** Measurement grid: dx=4mm, dy=4mm, dz=1.4mm  
Reference Value = 0 V/m; Power Drift = 0.01 dB  
Peak SAR (extrapolated) = 1.05 W/kg  
**SAR(1 g) = 0.259 W/kg; SAR(10 g) = 0.066 W/kg**  
Maximum value of SAR (measured) = 0.647 W/kg



0 dB = 0.647 W/kg = -1.89 dBW/kg

### 29\_WLAN5GHz\_802.11a\_6Mbps\_Back\_5mm\_Ch149

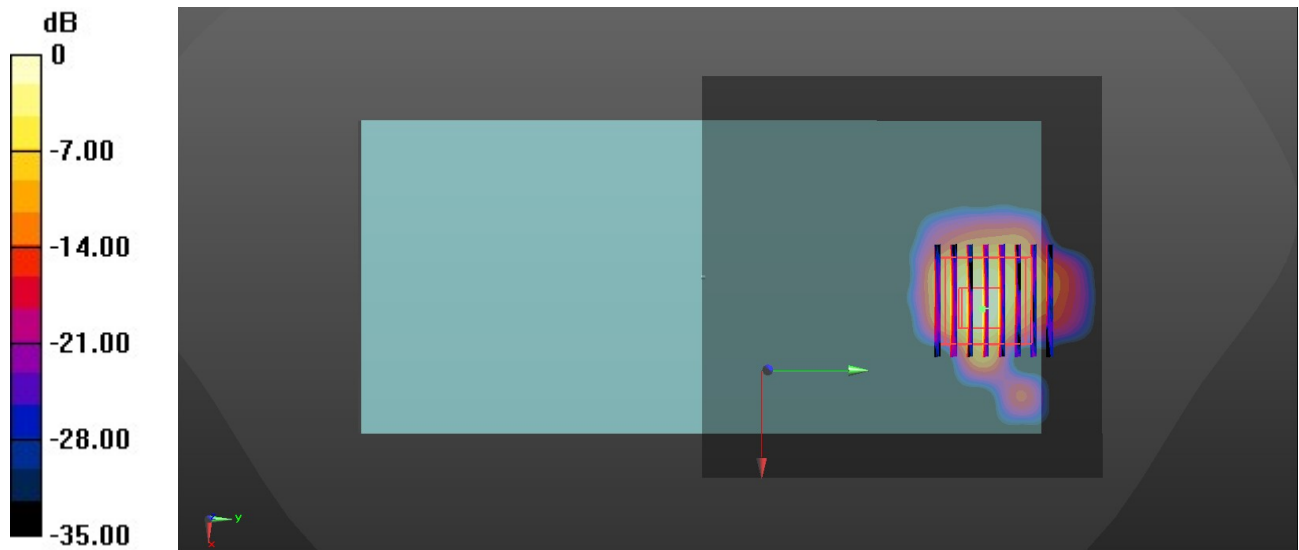
Communication System: UID 0, 802.11a (0); Frequency: 5745 MHz; Duty Cycle: 1:1.021  
Medium: HSL\_5000 Medium parameters used:  $f = 5745$  MHz;  $\sigma = 4.929$  S/m;  $\epsilon_r = 33.858$ ;  $\rho = 1000$  kg/m<sup>3</sup>  
Ambient Temperature : 23.2 °C; Liquid Temperature : 22.6 °C

#### DASY5 Configuration:

- Probe: EX3DV4 - SN7592; ConvF(4.69, 4.69, 4.69); Calibrated: 2020.5.22
- Sensor-Surface: 1.4mm (Mechanical Surface Detection)
- Electronics: DAE4 Sn656; Calibrated: 2019.12.17
- Phantom: SAM1; Type: SAM; Serial: TP-1697
- Measurement SW: DASY52, Version 52.10 (4); SEMCAD X Version 14.6.14 (7483)

**Area Scan (101x101x1):** Interpolated grid: dx=1.000 mm, dy=1.000 mm  
Maximum value of SAR (interpolated) = 1.03 W/kg

**Zoom Scan (8x8x7)/Cube 0:** Measurement grid: dx=4mm, dy=4mm, dz=1.4mm  
Reference Value = 0 V/m; Power Drift = 0.02 dB  
Peak SAR (extrapolated) = 1.56 W/kg  
**SAR(1 g) = 0.315 W/kg; SAR(10 g) = 0.074 W/kg**  
Maximum value of SAR (measured) = 0.904 W/kg



0 dB = 0.904 W/kg = -0.44 dBW/kg