

#01_GSM850_GPRS (4 Tx slots)_Left Cheek_Ch128

Communication System: GSM850 ; Frequency: 824.2 MHz; Duty Cycle: 1:2.08

Medium: HSL_850_200423 Medium parameters used : $f = 824.2$ MHz; $\sigma = 0.865$ S/m; $\epsilon_r = 42.009$; $\rho = 1000$ kg/m³

Ambient Temperature : 23.5 °C ; Liquid Temperature : 22.5 °C

DASY5 Configuration:

- Probe: EX3DV4 - SN7306; ConvF(9.73, 9.73, 9.73) @ 824.2 MHz; Calibrated: 2019/7/22
- Sensor-Surface: 1.4mm (Mechanical Surface Detection)
- Electronics: DAE3 Sn577; Calibrated: 2019/9/17
- Phantom: SAM_Left; Type: QD000P40CD; Serial: TP:1801
- Measurement SW: DASY52, Version 52.10 (4); SEMCAD X Version 14.6.14 (7483)

Area Scan (71x131x1): Interpolated grid: dx=1.500 mm, dy=1.500 mm

Maximum value of SAR (interpolated) = 0.200 W/kg

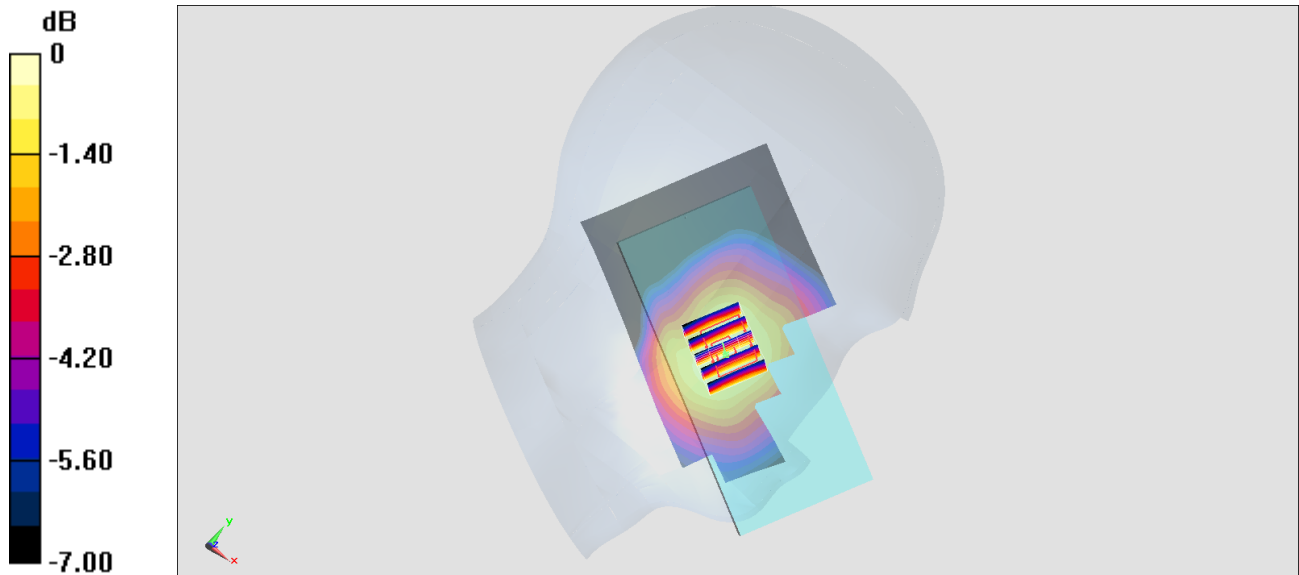
Zoom Scan (5x5x7)/Cube 0: Measurement grid: dx=8mm, dy=8mm, dz=5mm

Reference Value = 5.533 V/m; Power Drift = 0.10 dB

Peak SAR (extrapolated) = 0.231 W/kg

SAR(1 g) = 0.173 W/kg; SAR(10 g) = 0.135 W/kg

Maximum value of SAR (measured) = 0.215 W/kg



0 dB = 0.215 W/kg = -6.68 dBW/kg

#02_GSM1900_GPRS (4 Tx slots)_Right Cheek_Ch512

Communication System: PCS; Frequency: 1850.2 MHz; Duty Cycle: 1:2.08

Medium: HSL_1900_200424 Medium parameters used : $f = 1850.2$ MHz; $\sigma = 1.331$ S/m; $\epsilon_r = 40.872$; $\rho = 1000$ kg/m³

Ambient Temperature : 23.5 °C; Liquid Temperature : 22.5 °C

DASY5 Configuration:

- Probe: EX3DV4 - SN7306; ConvF(8.15, 8.15, 8.15) @ 1850.2 MHz; Calibrated: 2019/7/22
- Sensor-Surface: 1.4mm (Mechanical Surface Detection)
- Electronics: DAE3 Sn577; Calibrated: 2019/9/17
- Phantom: SAM_Left; Type: QD000P40CD; Serial: TP:1801
- Measurement SW: DASY52, Version 52.10 (4); SEMCAD X Version 14.6.14 (7483)

Area Scan (71x131x1): Interpolated grid: dx=1.500 mm, dy=1.500 mm

Maximum value of SAR (interpolated) = 0.112 W/kg

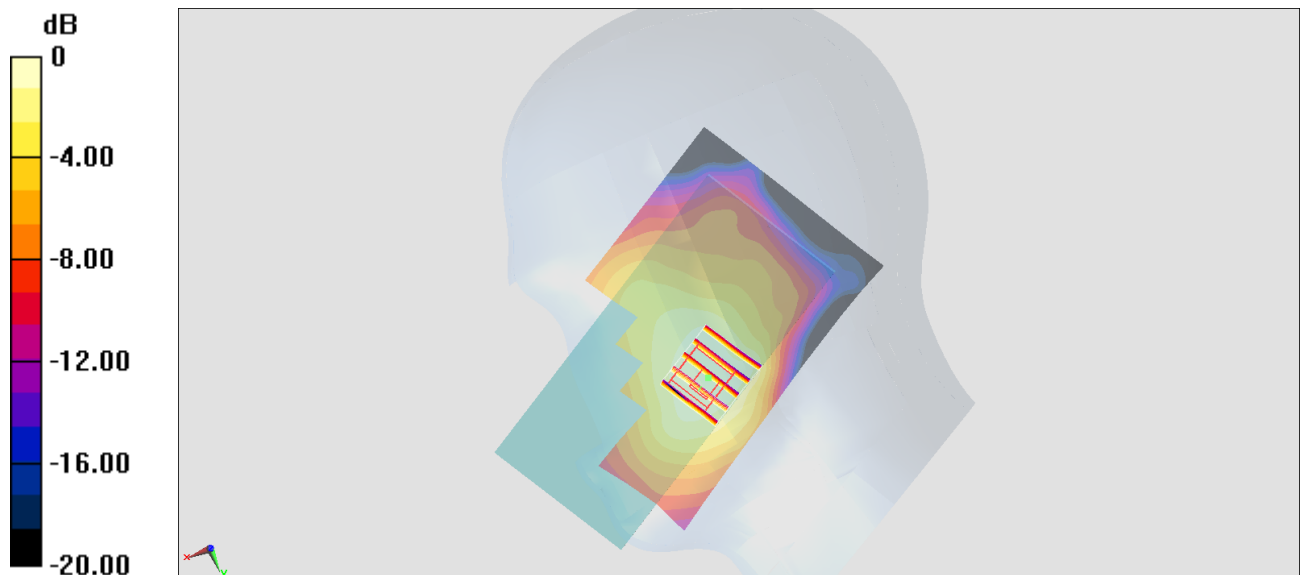
Zoom Scan (5x5x7)/Cube 0: Measurement grid: dx=8mm, dy=8mm, dz=5mm

Reference Value = 3.661 V/m; Power Drift = -0.13 dB

Peak SAR (extrapolated) = 0.132 W/kg

SAR(1 g) = 0.082 W/kg; SAR(10 g) = 0.051 W/kg

Maximum value of SAR (measured) = 0.113 W/kg



0 dB = 0.113 W/kg = -9.47 dBW/kg

#03_WCDMA II_RMC 12.2Kbps_Right Cheek_Ch9400

Communication System: WCDMA; Frequency: 1880 MHz; Duty Cycle: 1:1

Medium: HSL_1900_200424 Medium parameters used: $f = 1880$ MHz; $\sigma = 1.36$ S/m; $\epsilon_r = 40.776$; $\rho = 1000$ kg/m³

Ambient Temperature : 23.5 °C; Liquid Temperature : 22.5 °C

DASY5 Configuration:

- Probe: EX3DV4 - SN7306; ConvF(8.15, 8.15, 8.15) @ 1880 MHz; Calibrated: 2019/7/22
- Sensor-Surface: 1.4mm (Mechanical Surface Detection)
- Electronics: DAE3 Sn577; Calibrated: 2019/9/17
- Phantom: SAM_Left; Type: QD000P40CD; Serial: TP:1801
- Measurement SW: DASY52, Version 52.10 (4); SEMCAD X Version 14.6.14 (7483)

Area Scan (71x131x1): Interpolated grid: dx=1.500 mm, dy=1.500 mm

Maximum value of SAR (interpolated) = 0.288 W/kg

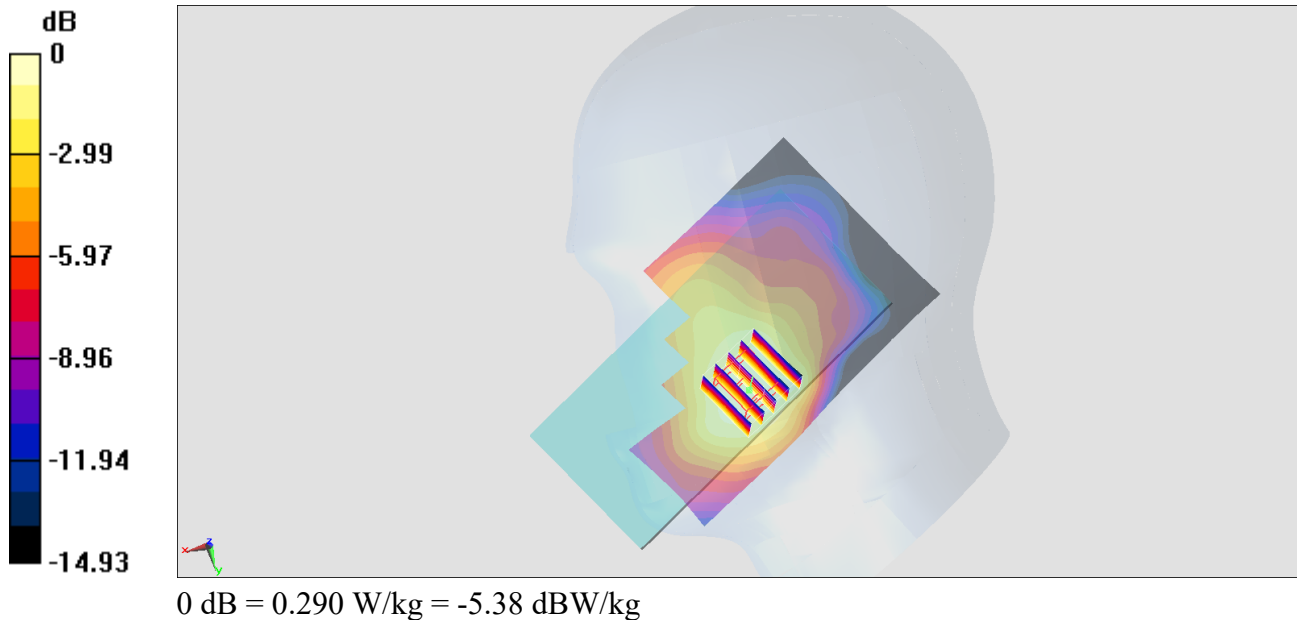
Zoom Scan (5x5x7)/Cube 0: Measurement grid: dx=8mm, dy=8mm, dz=5mm

Reference Value = 5.393 V/m; Power Drift = -0.14 dB

Peak SAR (extrapolated) = 0.344 W/kg

SAR(1 g) = 0.217 W/kg; SAR(10 g) = 0.138 W/kg

Maximum value of SAR (measured) = 0.290 W/kg



#04_WCDMA V_RMC 12.2Kbps_Left Cheek_Ch4132

Communication System: WCDMA ; Frequency: 826.4 MHz; Duty Cycle: 1:1

Medium: HSL_850_200423 Medium parameters used : $f = 826.4$ MHz; $\sigma = 0.867$ S/m; $\epsilon_r = 41.979$; $\rho = 1000$ kg/m³

Ambient Temperature : 23.5 °C ; Liquid Temperature : 22.5 °C

DASY5 Configuration:

- Probe: EX3DV4 - SN7306; ConvF(9.73, 9.73, 9.73) @ 826.4 MHz; Calibrated: 2019/7/22
- Sensor-Surface: 1.4mm (Mechanical Surface Detection)
- Electronics: DAE3 Sn577; Calibrated: 2019/9/17
- Phantom: SAM_Left; Type: QD000P40CD; Serial: TP:1801
- Measurement SW: DASY52, Version 52.10 (4); SEMCAD X Version 14.6.14 (7483)

Area Scan (71x131x1): Interpolated grid: dx=1.500 mm, dy=1.500 mm

Maximum value of SAR (interpolated) = 0.140 W/kg

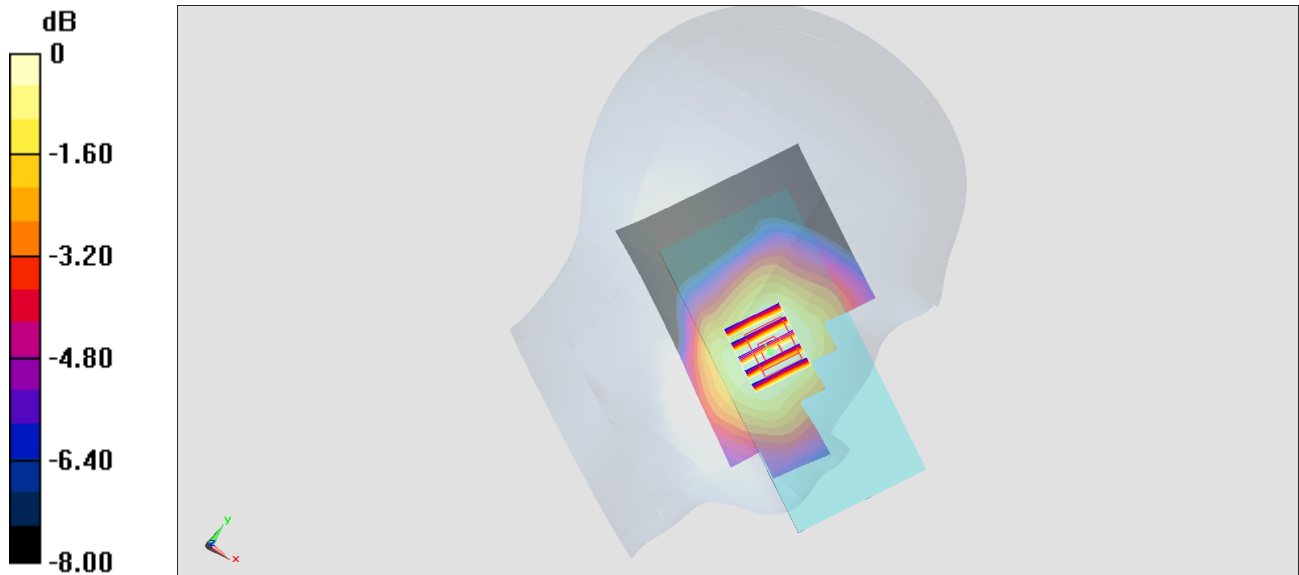
Zoom Scan (5x5x7)/Cube 0: Measurement grid: dx=8mm, dy=8mm, dz=5mm

Reference Value = 4.687 V/m; Power Drift = 0.16 dB

Peak SAR (extrapolated) = 0.155 W/kg

SAR(1 g) = 0.122 W/kg; SAR(10 g) = 0.096 W/kg

Maximum value of SAR (measured) = 0.142 W/kg



0 dB = 0.142 W/kg = -8.48 dBW/kg

#05_LTE Band 5_10M_QPSK_1_0_Left Cheek_Ch20525

Communication System: LTE ; Frequency: 836.5 MHz; Duty Cycle: 1:1

Medium: HSL_850_200423 Medium parameters used : $f = 836.5$ MHz; $\sigma = 0.877$ S/m; $\epsilon_r = 41.854$; $\rho = 1000$ kg/m³

Ambient Temperature : 23.5 °C ; Liquid Temperature : 22.5 °C

DASY5 Configuration:

- Probe: EX3DV4 - SN7306; ConvF(9.73, 9.73, 9.73) @ 836.5 MHz; Calibrated: 2019/7/22
- Sensor-Surface: 1.4mm (Mechanical Surface Detection)
- Electronics: DAE3 Sn577; Calibrated: 2019/9/17
- Phantom: SAM_Left; Type: QD000P40CD; Serial: TP:1801
- Measurement SW: DASY52, Version 52.10 (4); SEMCAD X Version 14.6.14 (7483)

Area Scan (71x131x1): Interpolated grid: dx=1.500 mm, dy=1.500 mm

Maximum value of SAR (interpolated) = 0.141 W/kg

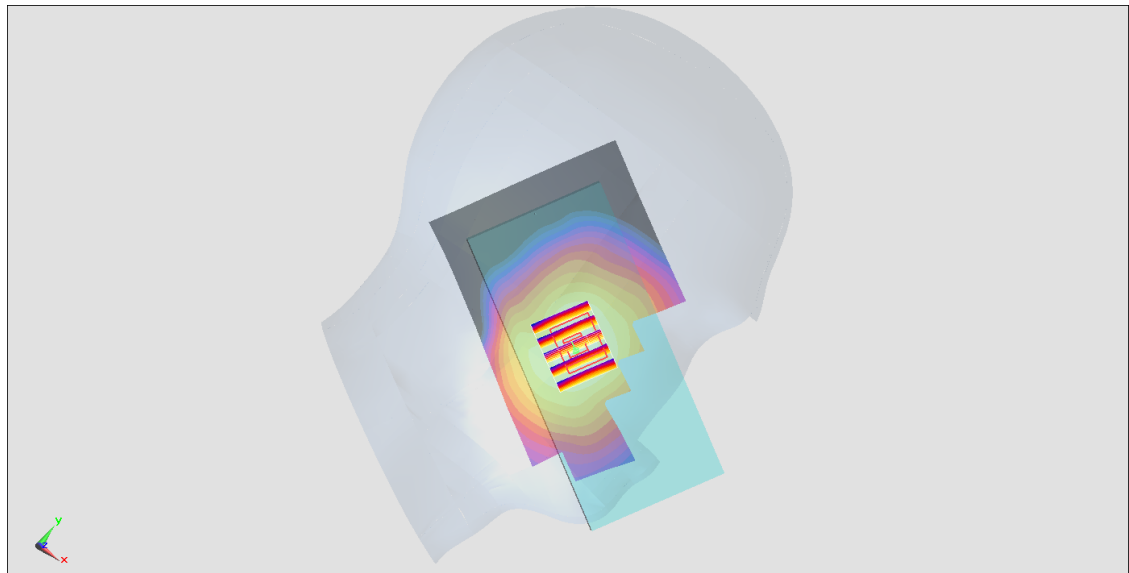
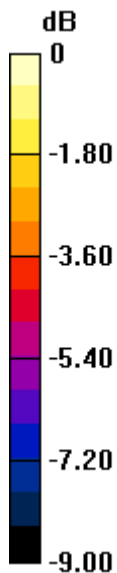
Zoom Scan (5x5x7)/Cube 0: Measurement grid: dx=8mm, dy=8mm, dz=5mm

Reference Value = 4.664 V/m; Power Drift = 0.15 dB

Peak SAR (extrapolated) = 0.162 W/kg

SAR(1 g) = 0.123 W/kg; SAR(10 g) = 0.095 W/kg

Maximum value of SAR (measured) = 0.151 W/kg



0 dB = 0.151 W/kg = -8.21 dBW/kg

#06_LTE Band 7_20M_QPSK_1_0_Right Cheek_Ch21100

Communication System: LTE; Frequency: 2535 MHz; Duty Cycle: 1:1

Medium: HSL_2600_200422 Medium parameters used : $f = 2535$ MHz; $\sigma = 1.883$ S/m; $\epsilon_r = 38.342$; $\rho = 1000$ kg/m³

Ambient Temperature : 23.4 °C; Liquid Temperature : 22.4 °C

DASY5 Configuration:

- Probe: EX3DV4 - SN7306; ConvF(7.3, 7.3, 7.3) @ 2535 MHz; Calibrated: 2019/7/22
- Sensor-Surface: 1.4mm (Mechanical Surface Detection)
- Electronics: DAE3 Sn577; Calibrated: 2019/9/17
- Phantom: SAM_Left; Type: QD000P40CD; Serial: TP:1801
- Measurement SW: DASY52, Version 52.10 (4); SEMCAD X Version 14.6.14 (7483)

Area Scan (81x161x1): Interpolated grid: dx=1.200 mm, dy=1.200 mm

Maximum value of SAR (interpolated) = 0.125 W/kg

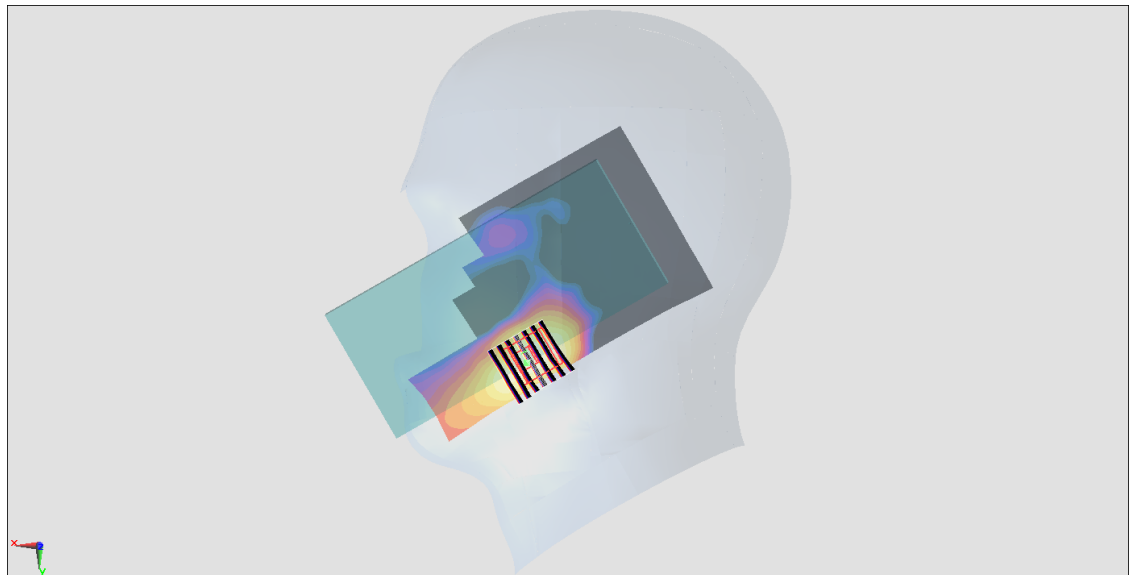
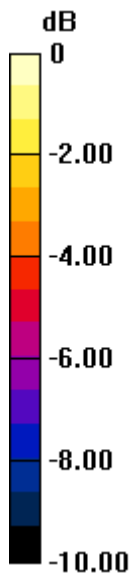
Zoom Scan (7x7x7)/Cube 0: Measurement grid: dx=5mm, dy=5mm, dz=5mm

Reference Value = 2.196 V/m; Power Drift = -0.16 dB

Peak SAR (extrapolated) = 0.157 W/kg

SAR(1 g) = 0.081 W/kg; SAR(10 g) = 0.044 W/kg

Maximum value of SAR (measured) = 0.129 W/kg



0 dB = 0.129 W/kg = -8.89 dBW/kg

#07_LTE Band 41_20M_QPSK_1_0_Right Cheek_Ch40140

Communication System: LTE; Frequency: 2545 MHz; Duty Cycle: 1:1.59

Medium: HSL_2600_200422 Medium parameters used : $f = 2545$ MHz; $\sigma = 1.892$ S/m; $\epsilon_r = 38.226$; $\rho = 1000$ kg/m³

Ambient Temperature : 23.4 °C; Liquid Temperature : 22.4 °C

DASY5 Configuration:

- Probe: EX3DV4 - SN7306; ConvF(7.3, 7.3, 7.3) @ 2545 MHz; Calibrated: 2019/7/22
- Sensor-Surface: 1.4mm (Mechanical Surface Detection)
- Electronics: DAE3 Sn577; Calibrated: 2019/9/17
- Phantom: SAM_Left; Type: QD000P40CD; Serial: TP:1801
- Measurement SW: DASY52, Version 52.10 (4); SEMCAD X Version 14.6.14 (7483)

Area Scan (81x161x1): Interpolated grid: dx=1.200 mm, dy=1.200 mm

Maximum value of SAR (interpolated) = 0.0455 W/kg

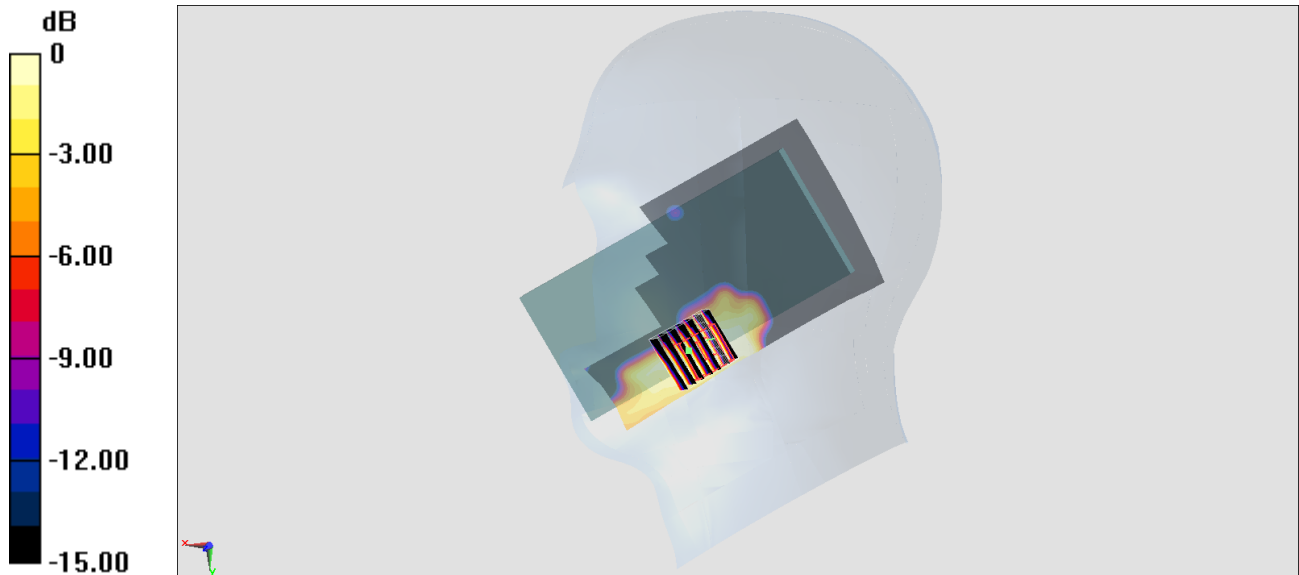
Zoom Scan (7x7x7)/Cube 0: Measurement grid: dx=5mm, dy=5mm, dz=5mm

Reference Value = 0.6810 V/m; Power Drift = 0.09 dB

Peak SAR (extrapolated) = 0.0540 W/kg

SAR(1 g) = 0.026 W/kg; SAR(10 g) = 0.012 W/kg

Maximum value of SAR (measured) = 0.0432 W/kg



0 dB = 0.0432 W/kg = -13.65 dBW/kg

#08_WLAN2.4GHz_802.11b 1Mbps_Left Tilted_Ch6

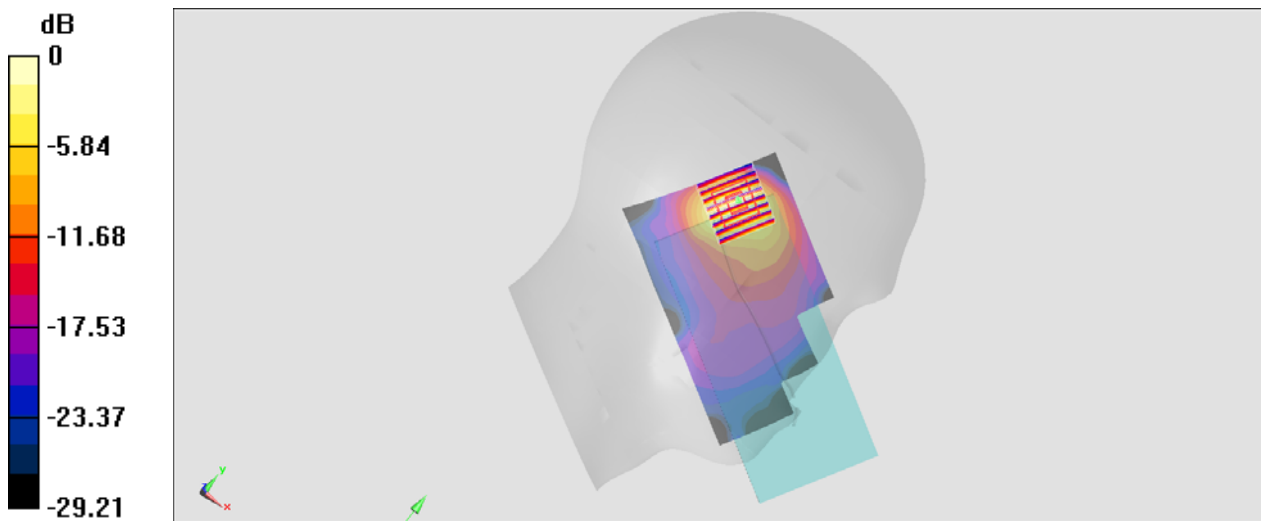
Communication System: 802.11b ; Frequency: 2437 MHz;Duty Cycle: 1:1
Medium: HSL_2450_200430 Medium parameters used : $f = 2437$ MHz; $\sigma = 1.815$ S/m; $\epsilon_r = 39.208$;
 $\rho = 1000$ kg/m³
Ambient Temperature : 23.4 °C ; Liquid Temperature : 22.4 °C

DASY5 Configuration

- Probe: ES3DV3 - SN3270;ConvF(4.57, 4.57, 4.57) @ 2437 MHz;Calibrated: 2019/9/25
- Sensor-Surface: 3mm (Mechanical Surface Detection)
- Electronics: DAE4 Sn778; Calibrated: 2019/5/21
- Phantom: Twin-SAM V5.0 (30deg probe tilt); Type: QD 000 P40 CD; Serial: 1885
- Measurement SW: DASY52, Version 52.10 (4); SEMCAD X Version 14.6.14 (7483)

Area Scan (81x161x1): Interpolated grid: dx=1.200 mm, dy=1.200 mm
Maximum value of SAR (interpolated) = 1.54 W/kg

Zoom Scan (8x8x7)/Cube 0: Measurement grid: dx=5mm, dy=5mm, dz=5mm
Reference Value = 20.98 V/m; Power Drift = 0.19 dB
Peak SAR (extrapolated) = 2.82 W/kg
SAR(1 g) = 1.07 W/kg; SAR(10 g) = 0.456 W/kg
Maximum value of SAR (measured) = 1.42 W/kg



#09_Bluetooth_1Mbps_Left Tilted_Ch39

Communication System: Bluetooth; Frequency: 2441 MHz; Duty Cycle: 1:1.301

Medium: HSL_2450_200422 Medium parameters used : $f = 2441$ MHz; $\sigma = 1.771$ S/m; $\epsilon_r = 38.602$; $\rho = 1000$ kg/m³

Ambient Temperature : 23.4 °C; Liquid Temperature : 22.4 °C

DASY5 Configuration:

- Probe: EX3DV4 - SN7306; ConvF(7.48, 7.48, 7.48) @ 2441 MHz; Calibrated: 2019/7/22
- Sensor-Surface: 1.4mm (Mechanical Surface Detection)
- Electronics: DAE3 Sn577; Calibrated: 2019/9/17
- Phantom: SAM_Left; Type: QD000P40CD; Serial: TP:1801
- Measurement SW: DASY52, Version 52.10 (4); SEMCAD X Version 14.6.14 (7483)

Area Scan (81x161x1): Interpolated grid: dx=1.200 mm, dy=1.200 mm

Maximum value of SAR (interpolated) = 0.739 W/kg

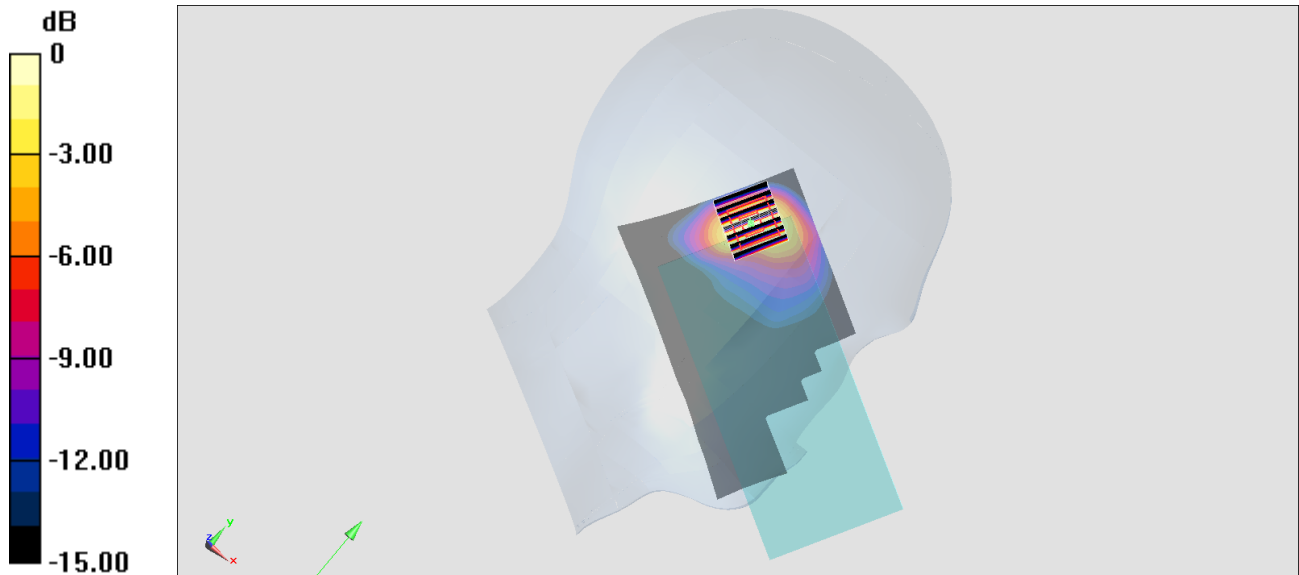
Zoom Scan (7x7x7)/Cube 0: Measurement grid: dx=5mm, dy=5mm, dz=5mm

Reference Value = 16.31 V/m; Power Drift = -0.11 dB

Peak SAR (extrapolated) = 1.11 W/kg

SAR(1 g) = 0.449 W/kg; SAR(10 g) = 0.201 W/kg

Maximum value of SAR (measured) = 0.840 W/kg



0 dB = 0.840 W/kg = -0.76 dBW/kg

#10_GSM850_GPRS (4 Tx slots)_Back_5mm_Ch128

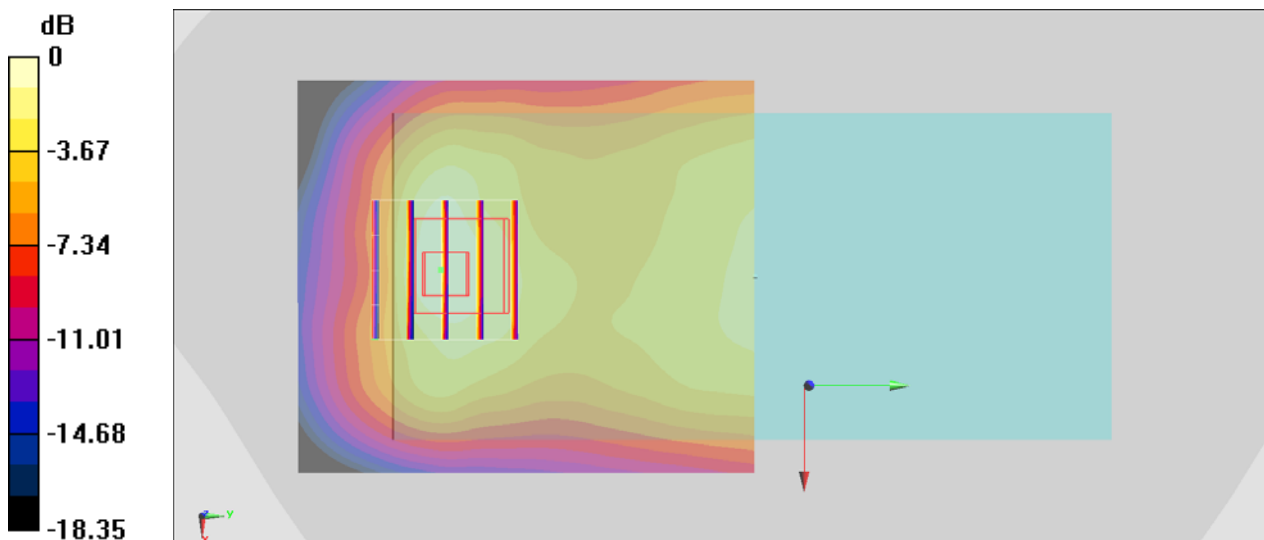
Communication System: GSM850; Frequency: 824.2 MHz; Duty Cycle: 1:2.08
Medium: HSL_850_200421 Medium parameters used : $f = 824.2$ MHz; $\sigma = 0.88$ S/m; $\epsilon_r = 42.583$; $\rho = 1000$ kg/m³
Ambient Temperature : 23.5 °C; Liquid Temperature : 22.5 °C

DASY5 Configuration

- Probe: ES3DV3 - SN3270; ConvF(6.43, 6.43, 6.43) @ 824.2 MHz; Calibrated: 2019/9/25
- Sensor-Surface: 3mm (Mechanical Surface Detection)
- Electronics: DAE4 Sn778; Calibrated: 2019/5/21
- Phantom: Twin-SAM V5.0 (30deg probe tilt); Type: QD 000 P40 CD; Serial: 1885
- Measurement SW: DASY52, Version 52.10 (2); SEMCAD X Version 14.6.12 (7450)

Area Scan (61x71x1): Interpolated grid: dx=1.500 mm, dy=1.500 mm
Maximum value of SAR (interpolated) = 0.565 W/kg

Zoom Scan (5x5x7)/Cube 0: Measurement grid: dx=8mm, dy=8mm, dz=5mm
Reference Value = 21.66 V/m; Power Drift = 0.02 dB
Peak SAR (extrapolated) = 0.930 W/kg
SAR(1 g) = 0.413 W/kg; SAR(10 g) = 0.224 W/kg
Maximum value of SAR (measured) = 0.507 W/kg



0 dB = 0.507 W/kg = -2.95 dBW/kg

#11_GSM1900_GPRS (4 Tx slots)_Back_5mm_Ch810

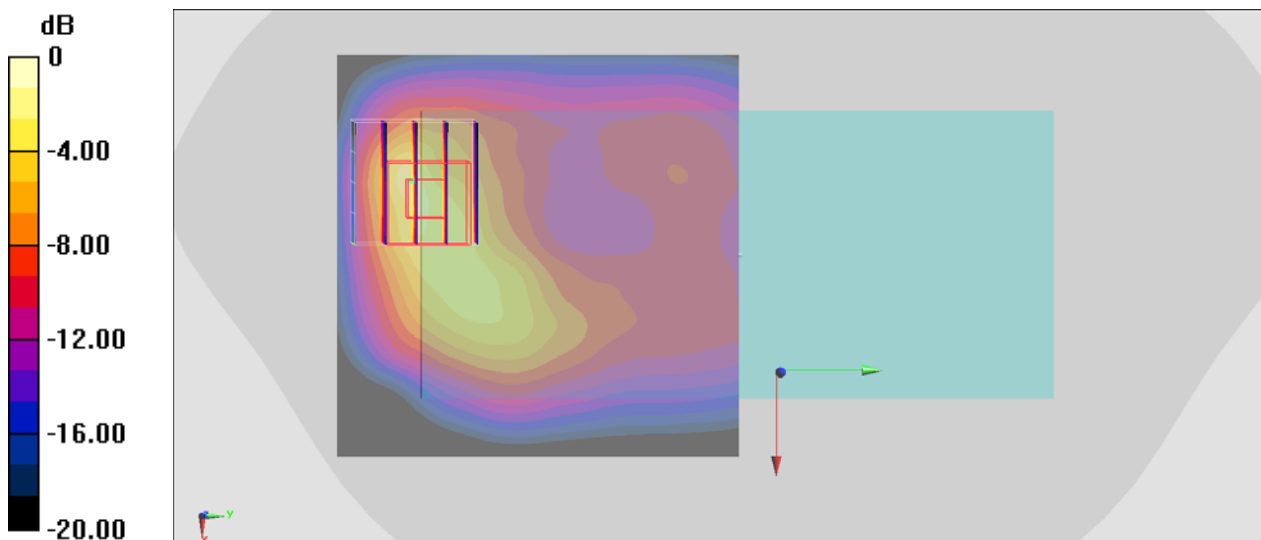
Communication System: PCS ; Frequency: 1909.8 MHz;Duty Cycle: 1:2.08
Medium: HSL_1900_200421 Medium parameters used: $f = 1910$ MHz; $\sigma = 1.449$ S/m; $\epsilon_r = 38.108$;
 $\rho = 1000$ kg/m³
Ambient Temperature : 23.5 °C ; Liquid Temperature : 22.5 °C

DASY5 Configuration

- Probe: ES3DV3 - SN3270;ConvF(5.2, 5.2, 5.2) @ 1909.8 MHz;Calibrated: 2019/9/25
- Sensor-Surface: 3mm (Mechanical Surface Detection)
- Electronics: DAE4 Sn778; Calibrated: 2019/5/21
- Phantom: Twin-SAM V5.0 (30deg probe tilt); Type: QD 000 P40 CD; Serial: 1885
- Measurement SW: DASY52, Version 52.10 (2); SEMCAD X Version 14.6.12 (7450)

Area Scan (71x71x1): Interpolated grid: dx=1.500 mm, dy=1.500 mm
Maximum value of SAR (interpolated) = 0.929 W/kg

Zoom Scan (5x5x7)/Cube 0: Measurement grid: dx=8mm, dy=8mm, dz=5mm
Reference Value = 19.68 V/m; Power Drift = 0.03 dB
Peak SAR (extrapolated) = 3.09 W/kg
SAR(1 g) = 1.22 W/kg; SAR(10 g) = 0.519 W/kg
Maximum value of SAR (measured) = 1.43 W/kg



0 dB = 1.43 W/kg = 1.55 dBW/kg

#12_WCDMA II_RMC 12.2Kbps_Back_5mm_Ch9262

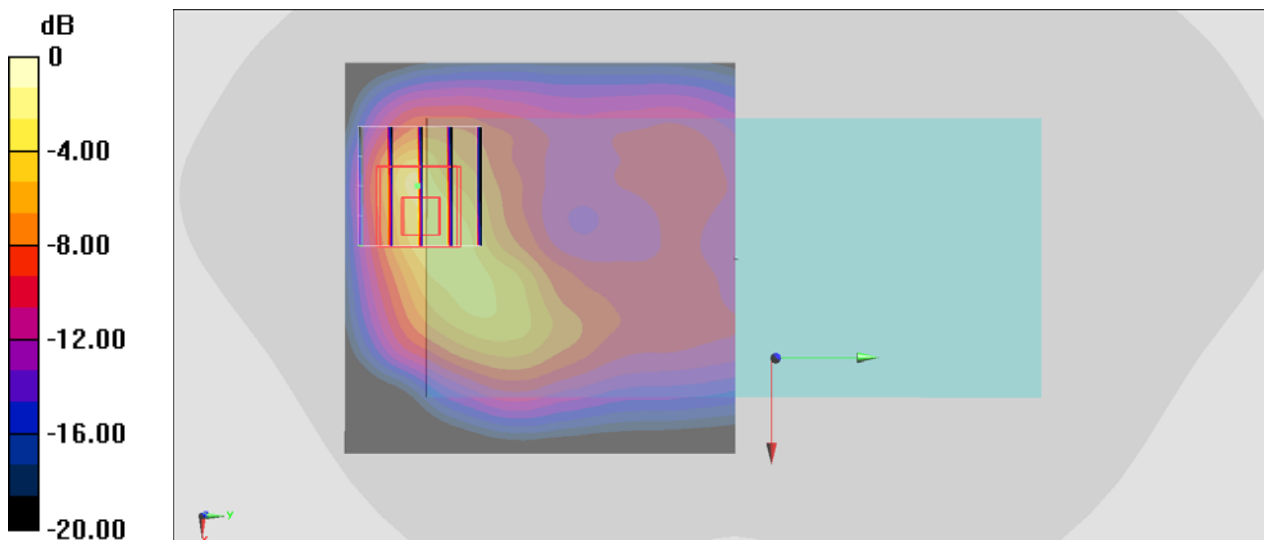
Communication System: WCDMA ; Frequency: 1852.4 MHz; Duty Cycle: 1:1
Medium: HSL_1900_200421 Medium parameters used : $f = 1852.4$ MHz; $\sigma = 1.395$ S/m; $\epsilon_r = 38.38$; $\rho = 1000$ kg/m³
Ambient Temperature : 23.5 °C ; Liquid Temperature : 22.5 °C

DASY5 Configuration

- Probe: ES3DV3 - SN3270; ConvF(5.2, 5.2, 5.2) @ 1852.4 MHz; Calibrated: 2019/9/25
- Sensor-Surface: 3mm (Mechanical Surface Detection)
- Electronics: DAE4 Sn778; Calibrated: 2019/5/21
- Phantom: Twin-SAM V5.0 (30deg probe tilt); Type: QD 000 P40 CD; Serial: 1885
- Measurement SW: DASY52, Version 52.10 (2); SEMCAD X Version 14.6.12 (7450)

Area Scan (71x71x1): Interpolated grid: dx=1.500 mm, dy=1.500 mm
Maximum value of SAR (interpolated) = 0.866 W/kg

Zoom Scan (5x5x7)/Cube 0: Measurement grid: dx=8mm, dy=8mm, dz=5mm
Reference Value = 17.05 V/m; Power Drift = 0.14 dB
Peak SAR (extrapolated) = 2.74 W/kg
SAR(1 g) = 1.04 W/kg; SAR(10 g) = 0.422 W/kg
Maximum value of SAR (measured) = 1.43 W/kg



0 dB = 1.43 W/kg = 1.55 dBW/kg

#13_WCDMA V_RMC 12.2Kbps_Back_5mm_Ch4132

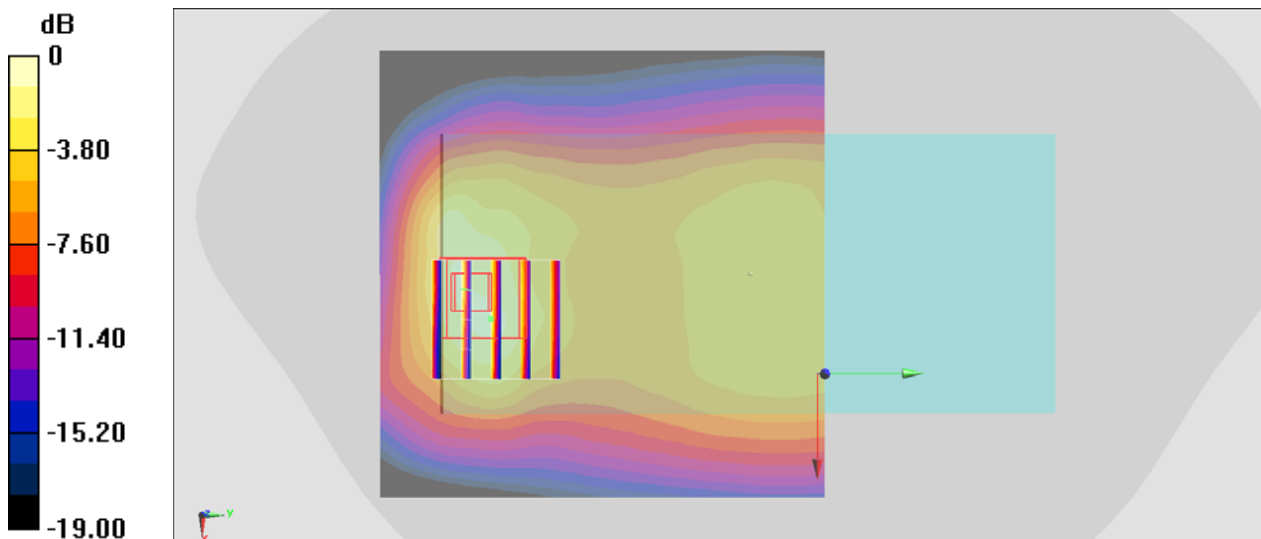
Communication System: WCDMA ; Frequency: 826.4 MHz;Duty Cycle: 1:1
Medium: HSL_850_200421 Medium parameters used : $f = 826.4$ MHz; $\sigma = 0.882$ S/m; $\epsilon_r = 42.552$;
 $\rho = 1000$ kg/m³
Ambient Temperature : 23.5 °C ; Liquid Temperature : 22.5 °C

DASY5 Configuration

- Probe: ES3DV3 - SN3270;ConvF(6.43, 6.43, 6.43) @ 826.4 MHz;Calibrated: 2019/9/25
- Sensor-Surface: 3mm (Mechanical Surface Detection)
- Electronics: DAE4 Sn778; Calibrated: 2019/5/21
- Phantom: Twin-SAM V5.0 (30deg probe tilt); Type: QD 000 P40 CD; Serial: 1885
- Measurement SW: DASY52, Version 52.10 (2); SEMCAD X Version 14.6.12 (7450)

Area Scan (81x81x1): Interpolated grid: dx=1.500 mm, dy=1.500 mm
Maximum value of SAR (interpolated) = 0.599 W/kg

Zoom Scan (5x5x7)/Cube 0: Measurement grid: dx=8mm, dy=8mm, dz=5mm
Reference Value = 24.39 V/m; Power Drift = 0.12 dB
Peak SAR (extrapolated) = 1.34 W/kg
SAR(1 g) = 0.572 W/kg; SAR(10 g) = 0.298 W/kg
Maximum value of SAR (measured) = 0.719 W/kg



0 dB = 0.719 W/kg = -1.43 dBW/kg

#14_LTE Band 5_10M_QPSK_1_0_Back_5mm_Ch20525

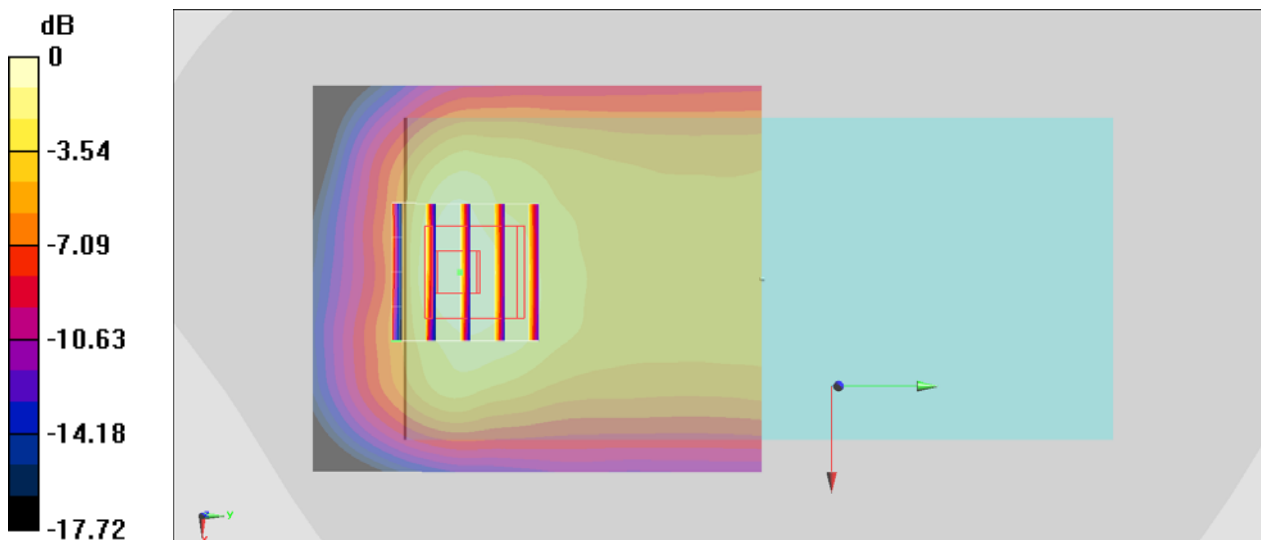
Communication System: LTE; Frequency: 836.5 MHz; Duty Cycle: 1:1
Medium: HSL_850_200421 Medium parameters used : $f = 836.5$ MHz; $\sigma = 0.891$ S/m; $\epsilon_r = 42.409$;
 $\rho = 1000$ kg/m³
Ambient Temperature : 23.5 °C ; Liquid Temperature : 22.5 °C

DASY5 Configuration

- Probe: ES3DV3 - SN3270; ConvF(6.43, 6.43, 6.43) @ 836.5 MHz; Calibrated: 2019/9/25
- Sensor-Surface: 3mm (Mechanical Surface Detection)
- Electronics: DAE4 Sn778; Calibrated: 2019/5/21
- Phantom: Twin-SAM V5.0 (30deg probe tilt); Type: QD 000 P40 CD; Serial: 1885
- Measurement SW: DASY52, Version 52.10 (2); SEMCAD X Version 14.6.12 (7450)

Area Scan (61x71x1): Interpolated grid: dx=1.500 mm, dy=1.500 mm
Maximum value of SAR (interpolated) = 0.622 W/kg

Zoom Scan (5x5x7)/Cube 0: Measurement grid: dx=8mm, dy=8mm, dz=5mm
Reference Value = 22.75 V/m; Power Drift = 0.08 dB
Peak SAR (extrapolated) = 0.999 W/kg
SAR(1 g) = 0.465 W/kg; SAR(10 g) = 0.258 W/kg
Maximum value of SAR (measured) = 0.561 W/kg



0 dB = 0.561 W/kg = -2.51 dBW/kg

#15_LTE Band 7_20M_QPSK_1_0_Back_5mm_Ch21100

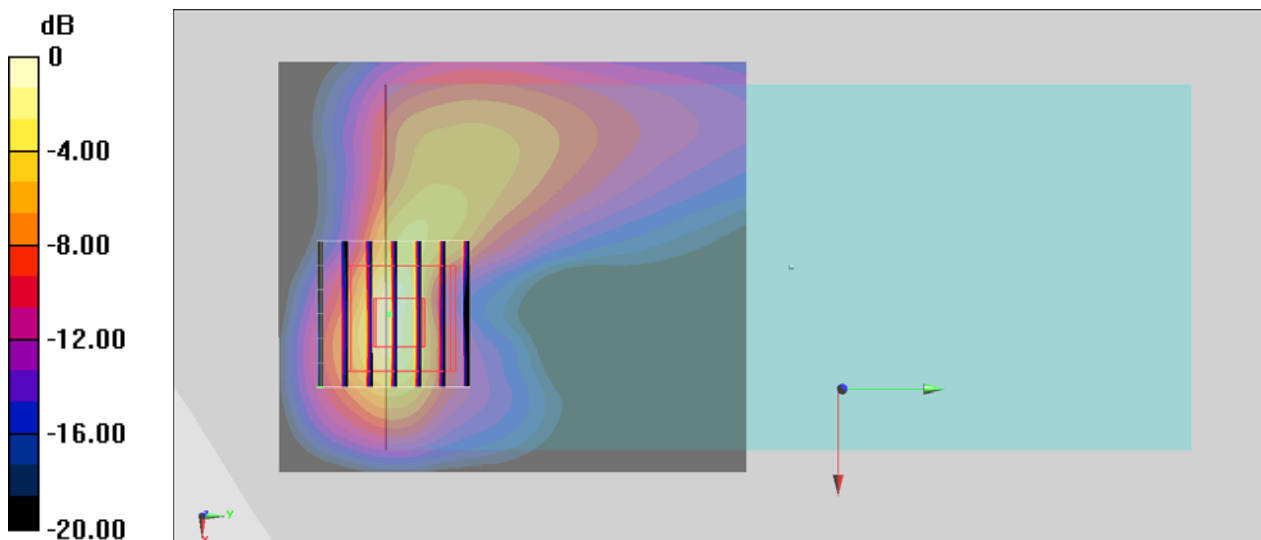
Communication System: LTE; Frequency: 2535 MHz; Duty Cycle: 1:1
Medium: HSL_2600_200422 Medium parameters used: $f = 2535$ MHz; $\sigma = 1.898$ S/m; $\epsilon_r = 39.48$; $\rho = 1000$ kg/m³
Ambient Temperature : 23.4 °C; Liquid Temperature : 22.4 °C

DASY5 Configuration

- Probe: ES3DV3 - SN3270; ConvF(4.51, 4.51, 4.51) @ 2535 MHz; Calibrated: 2019/9/25
- Sensor-Surface: 3mm (Mechanical Surface Detection)
- Electronics: DAE4 Sn778; Calibrated: 2019/5/21
- Phantom: Twin-SAM V5.0 (30deg probe tilt); Type: QD 000 P40 CD; Serial: 1885
- Measurement SW: DASY52, Version 52.10 (2); SEMCAD X Version 14.6.12 (7450)

Area Scan (71x81x1): Interpolated grid: dx=1.200 mm, dy=1.200 mm
Maximum value of SAR (interpolated) = 1.10 W/kg

Zoom Scan (7x7x7)/Cube 0: Measurement grid: dx=5mm, dy=5mm, dz=5mm
Reference Value = 21.34 V/m; Power Drift = -0.14 dB
Peak SAR (extrapolated) = 3.15 W/kg
SAR(1 g) = 0.955 W/kg; SAR(10 g) = 0.339 W/kg
Maximum value of SAR (measured) = 1.24 W/kg



0 dB = 1.24 W/kg = 0.93 dBW/kg

#16_LTE Band 41_20M_QPSK_1_0_Back_5mm_Ch40670

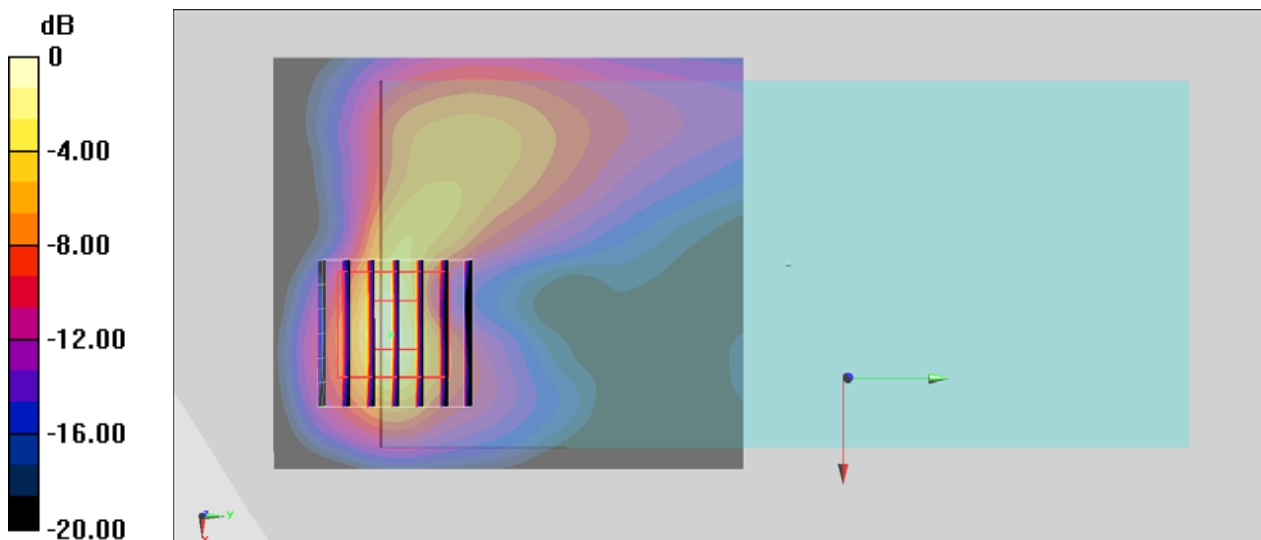
Communication System: LTE ; Frequency: 2598 MHz;Duty Cycle: 1:1.59
Medium: HSL_2600_200422 Medium parameters used: $f = 2598$ MHz; $\sigma = 1.976$ S/m; $\epsilon_r = 39.249$;
 $\rho = 1000$ kg/m³
Ambient Temperature : 23.4 °C ; Liquid Temperature : 22.4 °C

DASY5 Configuration

- Probe: ES3DV3 - SN3270;ConvF(4.51, 4.51, 4.51) @ 2598 MHz;Calibrated: 2019/9/25
- Sensor-Surface: 3mm (Mechanical Surface Detection)
- Electronics: DAE4 Sn778; Calibrated: 2019/5/21
- Phantom: Twin-SAM V5.0 (30deg probe tilt); Type: QD 000 P40 CD; Serial: 1885
- Measurement SW: DASY52, Version 52.10 (2); SEMCAD X Version 14.6.12 (7450)

Area Scan (71x81x1): Interpolated grid: dx=1.200 mm, dy=1.200 mm
Maximum value of SAR (interpolated) = 1.23 W/kg

Zoom Scan (7x7x7)/Cube 0: Measurement grid: dx=5mm, dy=5mm, dz=5mm
Reference Value = 17.81 V/m; Power Drift = -0.12 dB
Peak SAR (extrapolated) = 3.10 W/kg
SAR(1 g) = 1.03 W/kg; SAR(10 g) = 0.377 W/kg
Maximum value of SAR (measured) = 1.45 W/kg



0 dB = 1.45 W/kg = 1.61 dBW/kg

#17_WLAN2.4GHz_802.11b 1Mbps_Back_5mm_Ch6

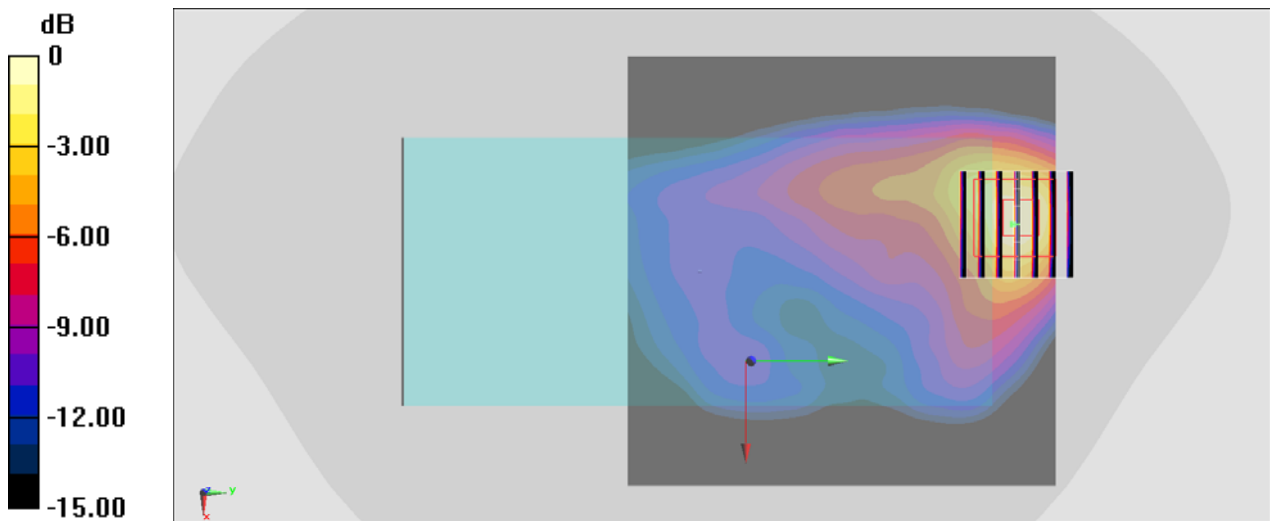
Communication System: 802.11b ; Frequency: 2437 MHz;Duty Cycle: 1:1
Medium: HSL_2450_200430 Medium parameters used : $f = 2437$ MHz; $\sigma = 1.815$ S/m; $\epsilon_r = 39.208$;
 $\rho = 1000$ kg/m³
Ambient Temperature : 23.4 °C ; Liquid Temperature : 22.4 °C

DASY5 Configuration

- Probe: ES3DV3 - SN3270;ConvF(4.57, 4.57, 4.57) @ 2437 MHz;Calibrated: 2019/9/25
- Sensor-Surface: 3mm (Mechanical Surface Detection)
- Electronics: DAE4 Sn778; Calibrated: 2019/5/21
- Phantom: Twin-SAM V5.0 (30deg probe tilt); Type: QD 000 P40 CD; Serial: 1885
- Measurement SW: DASY52, Version 52.10 (4); SEMCAD X Version 14.6.14 (7483)

Area Scan (101x101x1): Interpolated grid: dx=1.200 mm, dy=1.200 mm
Maximum value of SAR (interpolated) = 0.937 W/kg

Zoom Scan (7x7x7)/Cube 0: Measurement grid: dx=5mm, dy=5mm, dz=5mm
Reference Value = 6.588 V/m; Power Drift = -0.15 dB
Peak SAR (extrapolated) = 1.81 W/kg
SAR(1 g) = 0.667 W/kg; SAR(10 g) = 0.280 W/kg
Maximum value of SAR (measured) = 0.894 W/kg



0 dB = 0.894 W/kg = -0.49 dBW/kg

#18_Bluetooth_1Mbps_Top Side_5mm_Ch39

Communication System: Bluetooth; Frequency: 2441 MHz; Duty Cycle: 1:1.301

Medium: HSL_2450_200422 Medium parameters used : $f = 2441 \text{ MHz}$; $\sigma = 1.771 \text{ S/m}$; $\epsilon_r = 38.602$; $\rho = 1000 \text{ kg/m}^3$

Ambient Temperature : $23.4 \text{ }^\circ\text{C}$; Liquid Temperature : $22.4 \text{ }^\circ\text{C}$

DASY5 Configuration:

- Probe: EX3DV4 - SN7306; ConvF(7.48, 7.48, 7.48) @ 2441 MHz; Calibrated: 2019/7/22
- Sensor-Surface: 1.4mm (Mechanical Surface Detection)
- Electronics: DAE3 Sn577; Calibrated: 2019/9/17
- Phantom: SAM_Left; Type: QD000P40CD; Serial: TP:1801
- Measurement SW: DASY52, Version 52.10 (4); SEMCAD X Version 14.6.14 (7483)

Area Scan (61x91x1): Interpolated grid: $dx=1.200 \text{ mm}$, $dy=1.200 \text{ mm}$

Maximum value of SAR (interpolated) = 0.994 W/kg

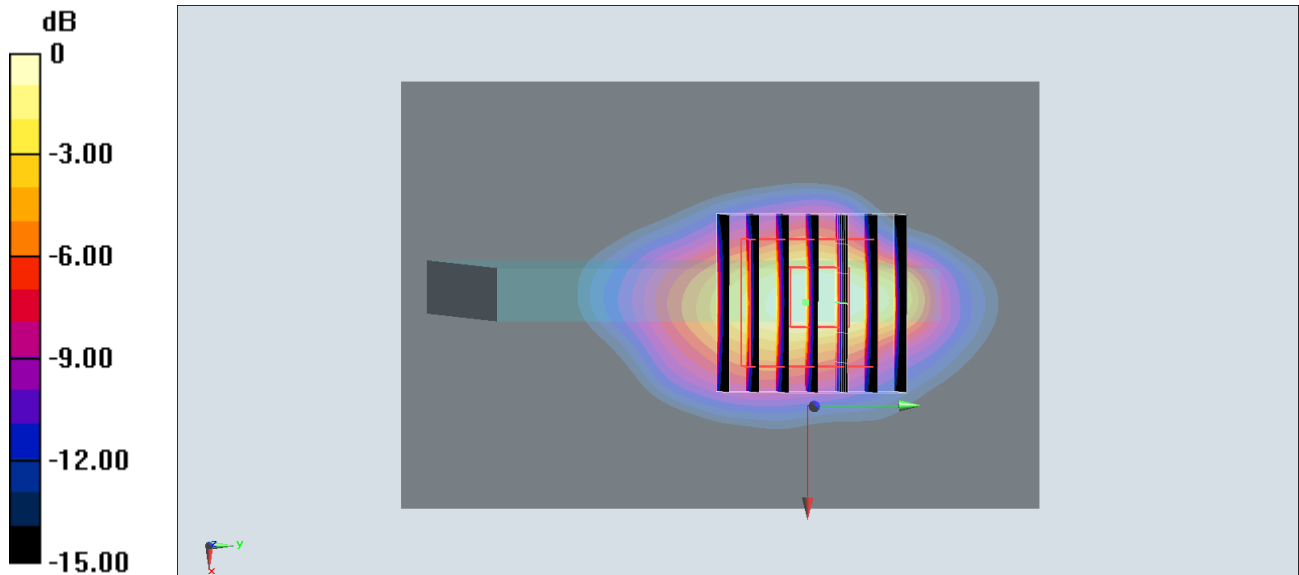
Zoom Scan (7x7x7)/Cube 0: Measurement grid: $dx=5\text{mm}$, $dy=5\text{mm}$, $dz=5\text{mm}$

Reference Value = 0 V/m ; Power Drift = 0.00 dB

Peak SAR (extrapolated) = 1.25 W/kg

SAR(1 g) = 0.498 W/kg ; SAR(10 g) = 0.203 W/kg

Maximum value of SAR (measured) = 0.919 W/kg



$0 \text{ dB} = 0.919 \text{ W/kg} = -0.37 \text{ dBW/kg}$

#19_GSM850_GPRS (4 Tx slots)_Back_5mm_Ch128

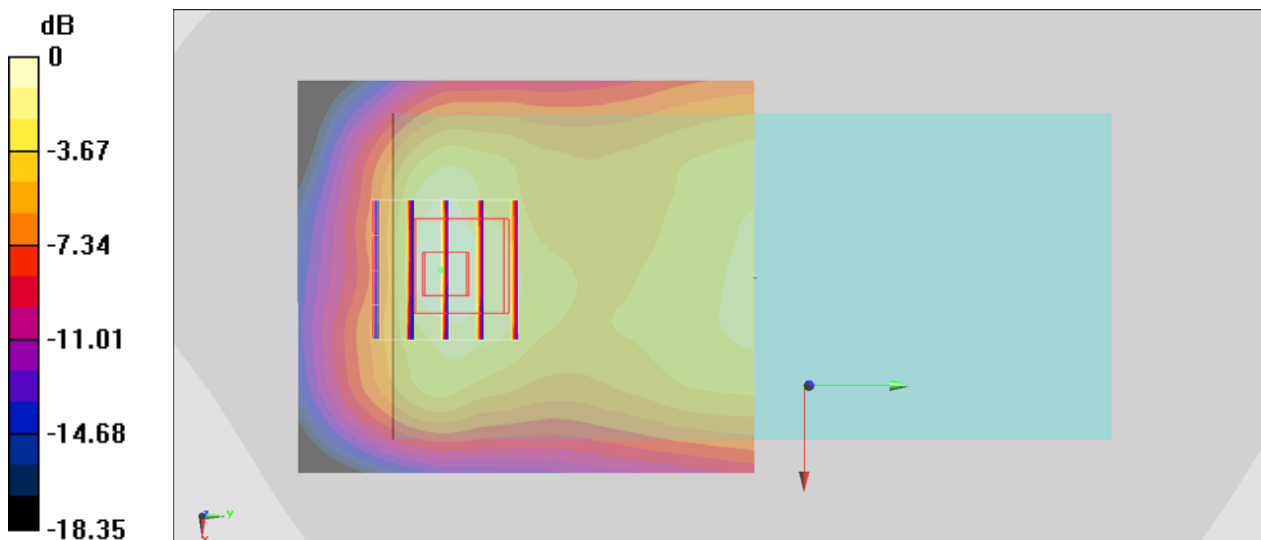
Communication System: GSM850; Frequency: 824.2 MHz; Duty Cycle: 1:2.08
Medium: HSL_850_200421 Medium parameters used : $f = 824.2$ MHz; $\sigma = 0.88$ S/m; $\epsilon_r = 42.583$; $\rho = 1000$ kg/m³
Ambient Temperature : 23.5 °C; Liquid Temperature : 22.5 °C

DASY5 Configuration

- Probe: ES3DV3 - SN3270; ConvF(6.43, 6.43, 6.43) @ 824.2 MHz; Calibrated: 2019/9/25
- Sensor-Surface: 3mm (Mechanical Surface Detection)
- Electronics: DAE4 Sn778; Calibrated: 2019/5/21
- Phantom: Twin-SAM V5.0 (30deg probe tilt); Type: QD 000 P40 CD; Serial: 1885
- Measurement SW: DASY52, Version 52.10 (2); SEMCAD X Version 14.6.12 (7450)

Area Scan (61x71x1): Interpolated grid: dx=1.500 mm, dy=1.500 mm
Maximum value of SAR (interpolated) = 0.565 W/kg

Zoom Scan (5x5x7)/Cube 0: Measurement grid: dx=8mm, dy=8mm, dz=5mm
Reference Value = 21.66 V/m; Power Drift = 0.02 dB
Peak SAR (extrapolated) = 0.930 W/kg
SAR(1 g) = 0.413 W/kg; SAR(10 g) = 0.224 W/kg
Maximum value of SAR (measured) = 0.507 W/kg



0 dB = 0.507 W/kg = -2.95 dBW/kg

#20_GSM1900_GPRS (4 Tx slots)_Back_5mm_Ch810

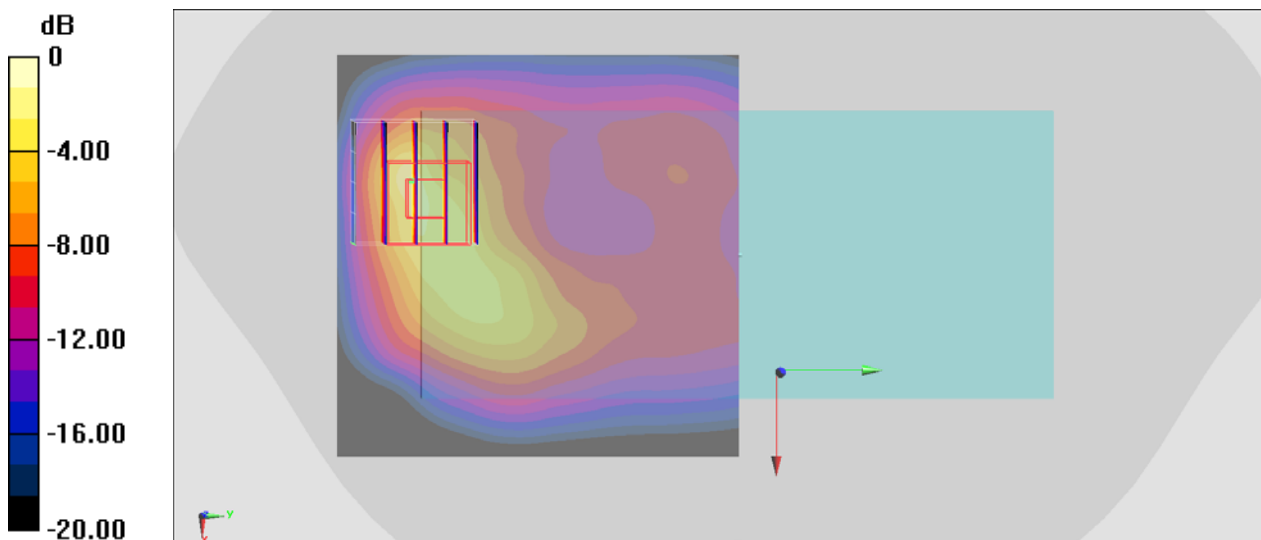
Communication System: PCS ; Frequency: 1909.8 MHz;Duty Cycle: 1:2.08
Medium: HSL_1900_200421 Medium parameters used: $f = 1910$ MHz; $\sigma = 1.449$ S/m; $\epsilon_r = 38.108$;
 $\rho = 1000$ kg/m³
Ambient Temperature : 23.5 °C ; Liquid Temperature : 22.5 °C

DASY5 Configuration

- Probe: ES3DV3 - SN3270;ConvF(5.2, 5.2, 5.2) @ 1909.8 MHz;Calibrated: 2019/9/25
- Sensor-Surface: 3mm (Mechanical Surface Detection)
- Electronics: DAE4 Sn778; Calibrated: 2019/5/21
- Phantom: Twin-SAM V5.0 (30deg probe tilt); Type: QD 000 P40 CD; Serial: 1885
- Measurement SW: DASY52, Version 52.10 (2); SEMCAD X Version 14.6.12 (7450)

Area Scan (71x71x1): Interpolated grid: dx=1.500 mm, dy=1.500 mm
Maximum value of SAR (interpolated) = 0.929 W/kg

Zoom Scan (5x5x7)/Cube 0: Measurement grid: dx=8mm, dy=8mm, dz=5mm
Reference Value = 19.68 V/m; Power Drift = 0.03 dB
Peak SAR (extrapolated) = 3.09 W/kg
SAR(1 g) = 1.22 W/kg; SAR(10 g) = 0.519 W/kg
Maximum value of SAR (measured) = 1.43 W/kg



0 dB = 1.43 W/kg = 1.55 dBW/kg

#21_WCDMA II_RMC 12.2Kbps_Back_5mm_Ch9262

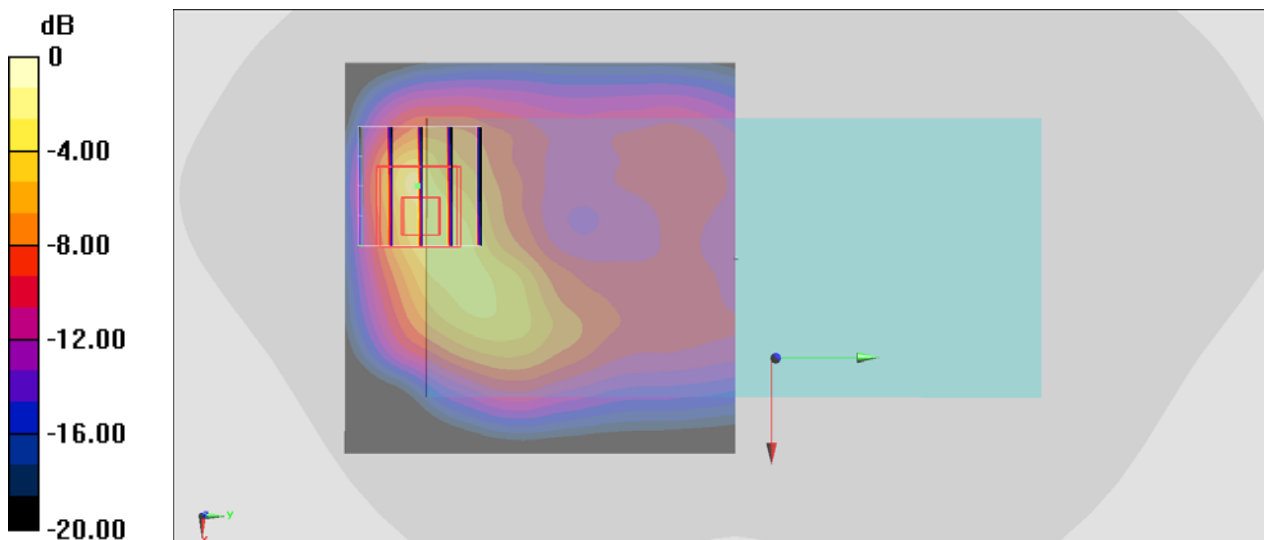
Communication System: WCDMA ; Frequency: 1852.4 MHz;Duty Cycle: 1:1
Medium: HSL_1900_200421 Medium parameters used : $f = 1852.4$ MHz; $\sigma = 1.395$ S/m; $\epsilon_r = 38.38$; $\rho = 1000$ kg/m³
Ambient Temperature : 23.5 °C ; Liquid Temperature : 22.5 °C

DASY5 Configuration

- Probe: ES3DV3 - SN3270;ConvF(5.2, 5.2, 5.2) @ 1852.4 MHz;Calibrated: 2019/9/25
- Sensor-Surface: 3mm (Mechanical Surface Detection)
- Electronics: DAE4 Sn778; Calibrated: 2019/5/21
- Phantom: Twin-SAM V5.0 (30deg probe tilt); Type: QD 000 P40 CD; Serial: 1885
- Measurement SW: DASY52, Version 52.10 (2); SEMCAD X Version 14.6.12 (7450)

Area Scan (71x71x1): Interpolated grid: dx=1.500 mm, dy=1.500 mm
Maximum value of SAR (interpolated) = 0.866 W/kg

Zoom Scan (5x5x7)/Cube 0: Measurement grid: dx=8mm, dy=8mm, dz=5mm
Reference Value = 17.05 V/m; Power Drift = 0.14 dB
Peak SAR (extrapolated) = 2.74 W/kg
SAR(1 g) = 1.04 W/kg; SAR(10 g) = 0.422 W/kg
Maximum value of SAR (measured) = 1.43 W/kg



0 dB = 1.43 W/kg = 1.55 dBW/kg

#22_WCDMA V_RMC 12.2Kbps_Back_5mm_Ch4132

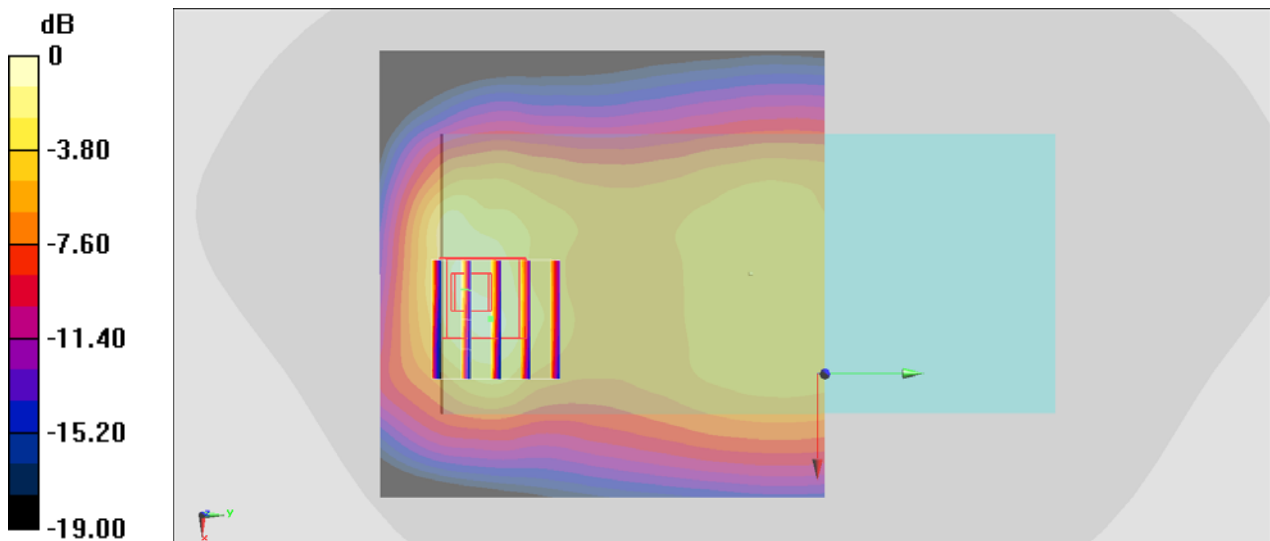
Communication System: WCDMA ; Frequency: 826.4 MHz;Duty Cycle: 1:1
 Medium: HSL_850_200421 Medium parameters used : $f = 826.4 \text{ MHz}$; $\sigma = 0.882 \text{ S/m}$; $\epsilon_r = 42.552$;
 $\rho = 1000 \text{ kg/m}^3$
 Ambient Temperature : $23.5 \text{ }^\circ\text{C}$; Liquid Temperature : $22.5 \text{ }^\circ\text{C}$

DASY5 Configuration

- Probe: ES3DV3 - SN3270;ConvF(6.43, 6.43, 6.43) @ 826.4 MHz;Calibrated: 2019/9/25
- Sensor-Surface: 3mm (Mechanical Surface Detection)
- Electronics: DAE4 Sn778; Calibrated: 2019/5/21
- Phantom: Twin-SAM V5.0 (30deg probe tilt); Type: QD 000 P40 CD; Serial: 1885
- Measurement SW: DASY52, Version 52.10 (2); SEMCAD X Version 14.6.12 (7450)

Area Scan (81x81x1): Interpolated grid: $dx=1.500 \text{ mm}$, $dy=1.500 \text{ mm}$
 Maximum value of SAR (interpolated) = 0.599 W/kg

Zoom Scan (5x5x7)/Cube 0: Measurement grid: $dx=8\text{mm}$, $dy=8\text{mm}$, $dz=5\text{mm}$
 Reference Value = 24.39 V/m ; Power Drift = 0.12 dB
 Peak SAR (extrapolated) = 1.34 W/kg
SAR(1 g) = 0.572 W/kg ; SAR(10 g) = 0.298 W/kg
 Maximum value of SAR (measured) = 0.719 W/kg



0 dB = $0.719 \text{ W/kg} = -1.43 \text{ dBW/kg}$

#23_LTE Band 5_10M_QPSK_1_0_Back_5mm_Ch20525

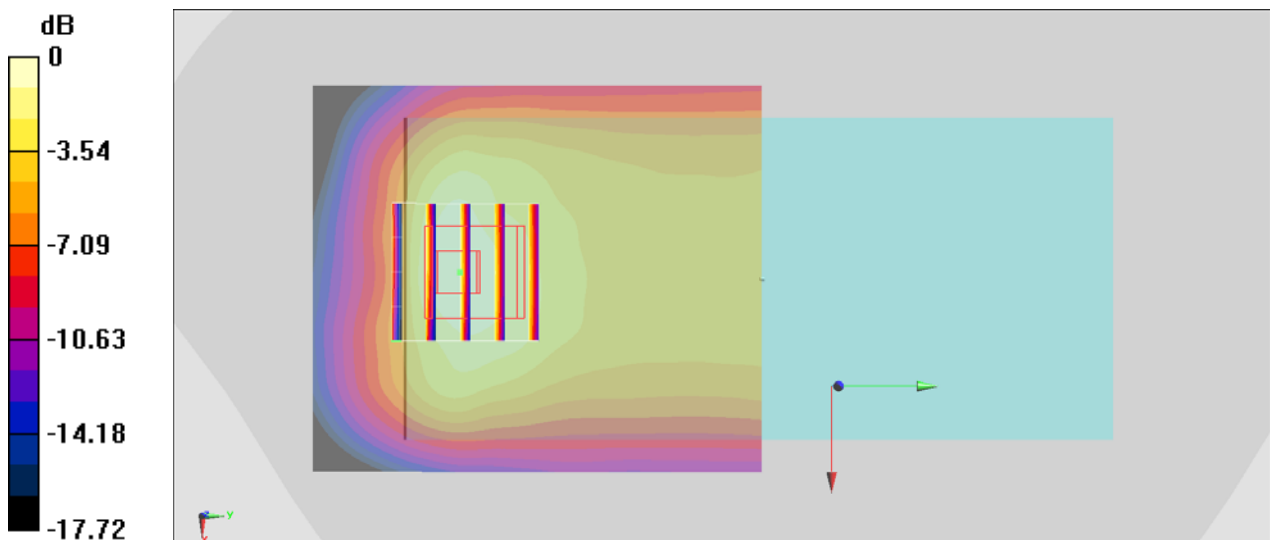
Communication System: LTE; Frequency: 836.5 MHz; Duty Cycle: 1:1
Medium: HSL_850_200421 Medium parameters used : $f = 836.5$ MHz; $\sigma = 0.891$ S/m; $\epsilon_r = 42.409$;
 $\rho = 1000$ kg/m³
Ambient Temperature : 23.5 °C; Liquid Temperature : 22.5 °C

DASY5 Configuration

- Probe: ES3DV3 - SN3270; ConvF(6.43, 6.43, 6.43) @ 836.5 MHz; Calibrated: 2019/9/25
- Sensor-Surface: 3mm (Mechanical Surface Detection)
- Electronics: DAE4 Sn778; Calibrated: 2019/5/21
- Phantom: Twin-SAM V5.0 (30deg probe tilt); Type: QD 000 P40 CD; Serial: 1885
- Measurement SW: DASY52, Version 52.10 (2); SEMCAD X Version 14.6.12 (7450)

Area Scan (61x71x1): Interpolated grid: dx=1.500 mm, dy=1.500 mm
Maximum value of SAR (interpolated) = 0.622 W/kg

Zoom Scan (5x5x7)/Cube 0: Measurement grid: dx=8mm, dy=8mm, dz=5mm
Reference Value = 22.75 V/m; Power Drift = 0.08 dB
Peak SAR (extrapolated) = 0.999 W/kg
SAR(1 g) = 0.465 W/kg; SAR(10 g) = 0.258 W/kg
Maximum value of SAR (measured) = 0.561 W/kg



0 dB = 0.561 W/kg = -2.51 dBW/kg

#24_LTE Band 7_20M_QPSK_1_0_Back_5mm_Ch21100

Communication System: LTE; Frequency: 2535 MHz; Duty Cycle: 1:1

Medium: HSL_2600_200422 Medium parameters used: $f = 2535$ MHz; $\sigma = 1.898$ S/m; $\epsilon_r = 39.48$; $\rho = 1000$ kg/m³

Ambient Temperature : 23.4 °C; Liquid Temperature : 22.4 °C

DASY5 Configuration

- Probe: ES3DV3 - SN3270; ConvF(4.51, 4.51, 4.51) @ 2535 MHz; Calibrated: 2019/9/25
- Sensor-Surface: 3mm (Mechanical Surface Detection)
- Electronics: DAE4 Sn778; Calibrated: 2019/5/21
- Phantom: Twin-SAM V5.0 (30deg probe tilt); Type: QD 000 P40 CD; Serial: 1885
- Measurement SW: DASY52, Version 52.10 (2); SEMCAD X Version 14.6.12 (7450)

Area Scan (71x81x1): Interpolated grid: dx=1.200 mm, dy=1.200 mm

Maximum value of SAR (interpolated) = 1.10 W/kg

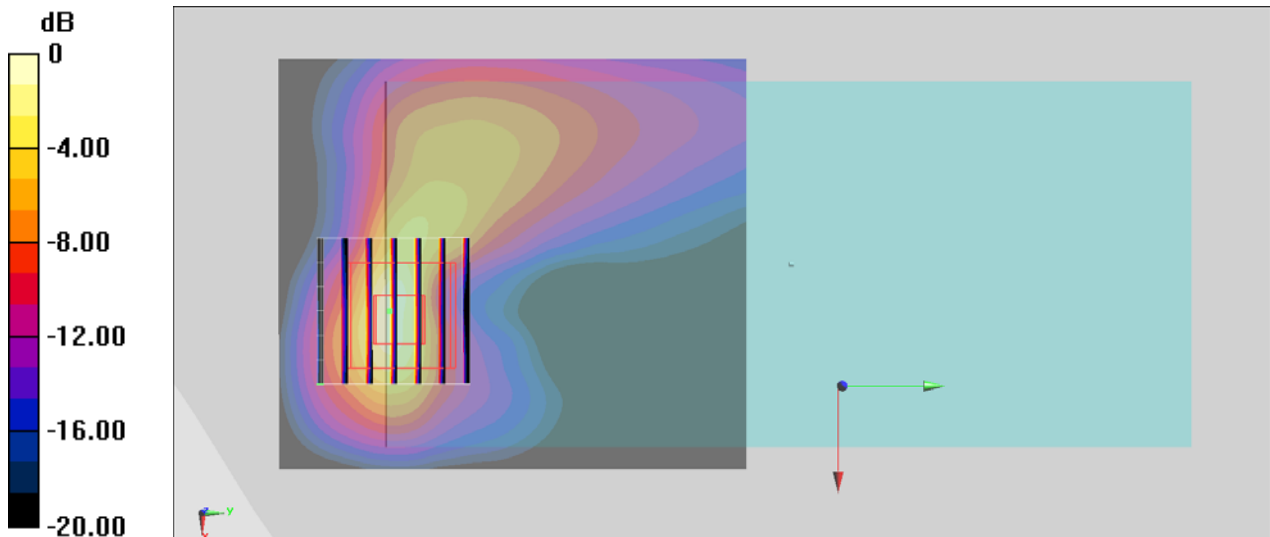
Zoom Scan (7x7x7)/Cube 0: Measurement grid: dx=5mm, dy=5mm, dz=5mm

Reference Value = 21.34 V/m; Power Drift = -0.14 dB

Peak SAR (extrapolated) = 3.15 W/kg

SAR(1 g) = 0.955 W/kg; SAR(10 g) = 0.339 W/kg

Maximum value of SAR (measured) = 1.24 W/kg



0 dB = 1.24 W/kg = 0.93 dBW/kg

#25_LTE Band 41_20M_QPSK_1_0_Back_5mm_Ch40670

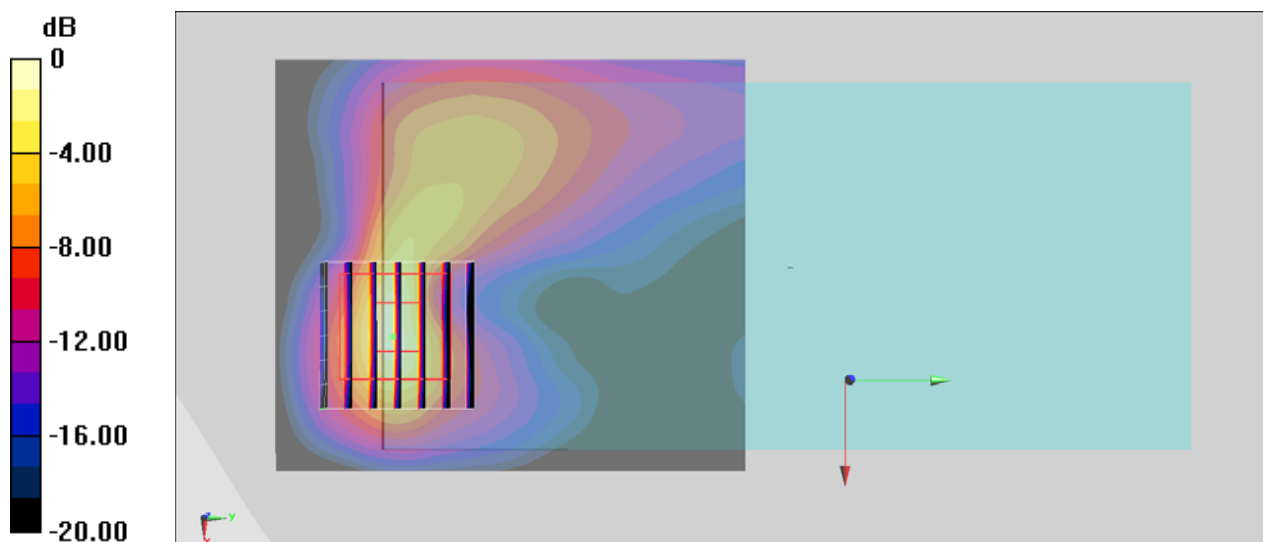
Communication System: LTE ; Frequency: 2598 MHz;Duty Cycle: 1:1.59
 Medium: HSL_2600_200422 Medium parameters used: $f = 2598$ MHz; $\sigma = 1.976$ S/m; $\epsilon_r = 39.249$;
 $\rho = 1000$ kg/m³
 Ambient Temperature : 23.4 °C ; Liquid Temperature : 22.4 °C

DASY5 Configuration

- Probe: ES3DV3 - SN3270;ConvF(4.51, 4.51, 4.51) @ 2598 MHz;Calibrated: 2019/9/25
- Sensor-Surface: 3mm (Mechanical Surface Detection)
- Electronics: DAE4 Sn778; Calibrated: 2019/5/21
- Phantom: Twin-SAM V5.0 (30deg probe tilt); Type: QD 000 P40 CD; Serial: 1885
- Measurement SW: DASY52, Version 52.10 (2); SEMCAD X Version 14.6.12 (7450)

Area Scan (71x81x1): Interpolated grid: dx=1.200 mm, dy=1.200 mm
 Maximum value of SAR (interpolated) = 1.23 W/kg

Zoom Scan (7x7x7)/Cube 0: Measurement grid: dx=5mm, dy=5mm, dz=5mm
 Reference Value = 17.81 V/m; Power Drift = -0.12 dB
 Peak SAR (extrapolated) = 3.10 W/kg
SAR(1 g) = 1.03 W/kg; SAR(10 g) = 0.377 W/kg
 Maximum value of SAR (measured) = 1.45 W/kg



0 dB = 1.45 W/kg = 1.61 dBW/kg

#26_WLAN2.4GHz__802.11b 1Mbps_Back_5mm_Ch6

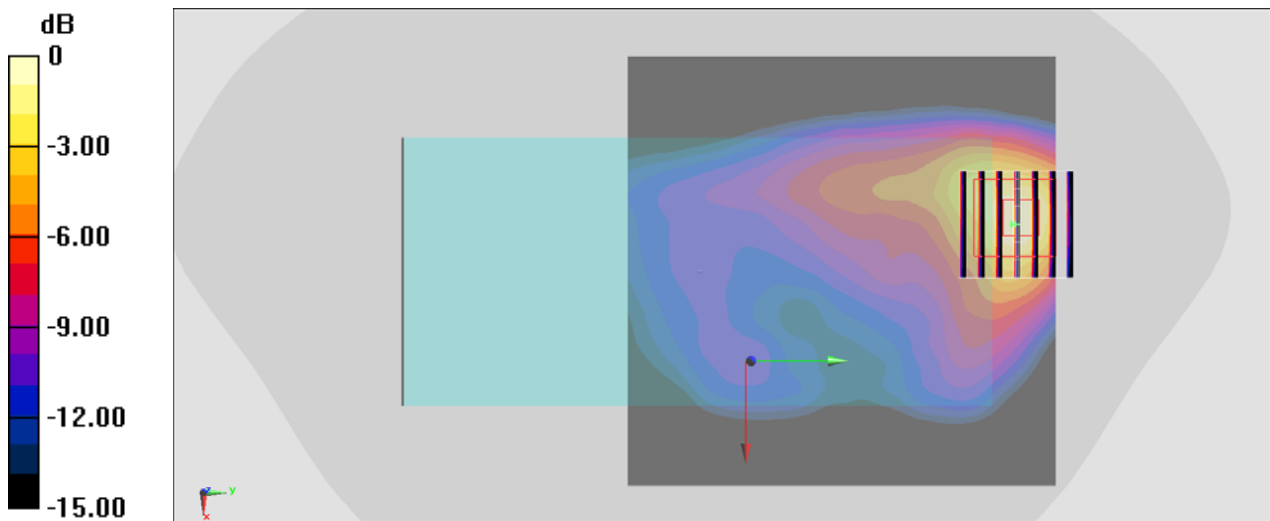
Communication System: 802.11b ; Frequency: 2437 MHz;Duty Cycle: 1:1
Medium: HSL_2450_200430 Medium parameters used : $f = 2437$ MHz; $\sigma = 1.815$ S/m; $\epsilon_r = 39.208$;
 $\rho = 1000$ kg/m³
Ambient Temperature : 23.4 °C ; Liquid Temperature : 22.4 °C

DASY5 Configuration

- Probe: ES3DV3 - SN3270;ConvF(4.57, 4.57, 4.57) @ 2437 MHz;Calibrated: 2019/9/25
- Sensor-Surface: 3mm (Mechanical Surface Detection)
- Electronics: DAE4 Sn778; Calibrated: 2019/5/21
- Phantom: Twin-SAM V5.0 (30deg probe tilt); Type: QD 000 P40 CD; Serial: 1885
- Measurement SW: DASY52, Version 52.10 (4); SEMCAD X Version 14.6.14 (7483)

Area Scan (101x101x1): Interpolated grid: dx=1.200 mm, dy=1.200 mm
Maximum value of SAR (interpolated) = 0.937 W/kg

Zoom Scan (7x7x7)/Cube 0: Measurement grid: dx=5mm, dy=5mm, dz=5mm
Reference Value = 6.588 V/m; Power Drift = -0.15 dB
Peak SAR (extrapolated) = 1.81 W/kg
SAR(1 g) = 0.667 W/kg; SAR(10 g) = 0.280 W/kg
Maximum value of SAR (measured) = 0.894 W/kg



0 dB = 0.894 W/kg = -0.49 dBW/kg

#27_Bluetooth_1Mbps_Back_5mm_Ch39

Communication System: Bluetooth; Frequency: 2441 MHz; Duty Cycle: 1:1.301

Medium: HSL_2450_200422 Medium parameters used : $f = 2441$ MHz; $\sigma = 1.771$ S/m; $\epsilon_r = 38.602$; $\rho = 1000$ kg/m³

Ambient Temperature : 23.4 °C ; Liquid Temperature : 22.4 °C

DASY5 Configuration:

- Probe: EX3DV4 - SN7306; ConvF(7.48, 7.48, 7.48) @ 2441 MHz; Calibrated: 2019/7/22
- Sensor-Surface: 1.4mm (Mechanical Surface Detection)
- Electronics: DAE3 Sn577; Calibrated: 2019/9/17
- Phantom: SAM_Left; Type: QD000P40CD; Serial: TP:1801
- Measurement SW: DASY52, Version 52.10 (4); SEMCAD X Version 14.6.14 (7483)

Area Scan (101x91x1): Interpolated grid: dx=1.200 mm, dy=1.200 mm

Maximum value of SAR (interpolated) = 0.605 W/kg

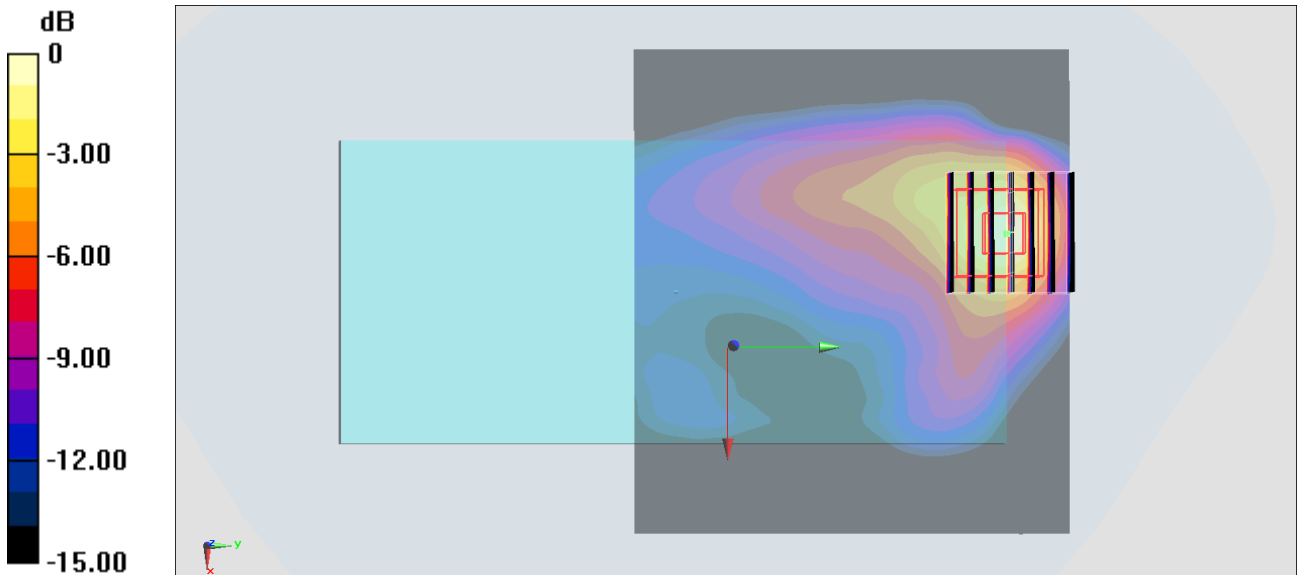
Zoom Scan (7x7x7)/Cube 0: Measurement grid: dx=5mm, dy=5mm, dz=5mm

Reference Value = 4.683 V/m; Power Drift = 0.12 dB

Peak SAR (extrapolated) = 0.852 W/kg

SAR(1 g) = 0.334 W/kg; SAR(10 g) = 0.143 W/kg

Maximum value of SAR (measured) = 0.640 W/kg



0 dB = 0.640 W/kg = -1.94 dBW/kg

#28_GSM1900_GPRS (4 Tx slots)_Bottom Side_0mm_Ch661

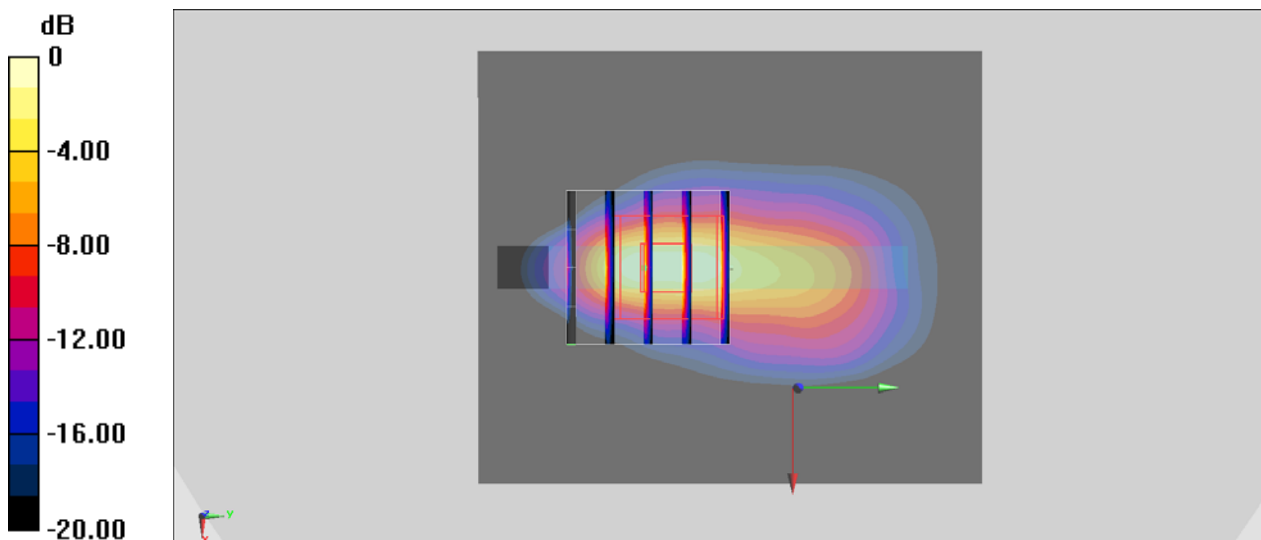
Communication System: PCS; Frequency: 1880 MHz; Duty Cycle: 1:2.08
Medium: HSL_1900_200421 Medium parameters used: $f = 1880$ MHz; $\sigma = 1.42$ S/m; $\epsilon_r = 38.258$; $\rho = 1000$ kg/m³
Ambient Temperature : 23.5 °C ; Liquid Temperature : 22.5 °C

DASY5 Configuration

- Probe: ES3DV3 - SN3270; ConvF(5.2, 5.2, 5.2) @ 1880 MHz; Calibrated: 2019/9/25
- Sensor-Surface: 3mm (Mechanical Surface Detection)
- Electronics: DAE4 Sn778; Calibrated: 2019/5/21
- Phantom: Twin-SAM V5.0 (30deg probe tilt); Type: QD 000 P40 CD; Serial: 1885
- Measurement SW: DASY52, Version 52.10 (2); SEMCAD X Version 14.6.12 (7450)

Area Scan (61x71x1): Interpolated grid: dx=1.500 mm, dy=1.500 mm
Maximum value of SAR (interpolated) = 7.54 W/kg

Zoom Scan (5x5x7)/Cube 0: Measurement grid: dx=8mm, dy=8mm, dz=5mm
Reference Value = 77.12 V/m; Power Drift = 0.09 dB
Peak SAR (extrapolated) = 14.8 W/kg
SAR(1 g) = 5.36 W/kg; SAR(10 g) = 1.95 W/kg
Maximum value of SAR (measured) = 7.75 W/kg



0 dB = 7.75 W/kg = 8.89 dBW/kg

#29_WCDMA II_RMC 12.2Kbps_Bottom Side_0mm_Ch9262

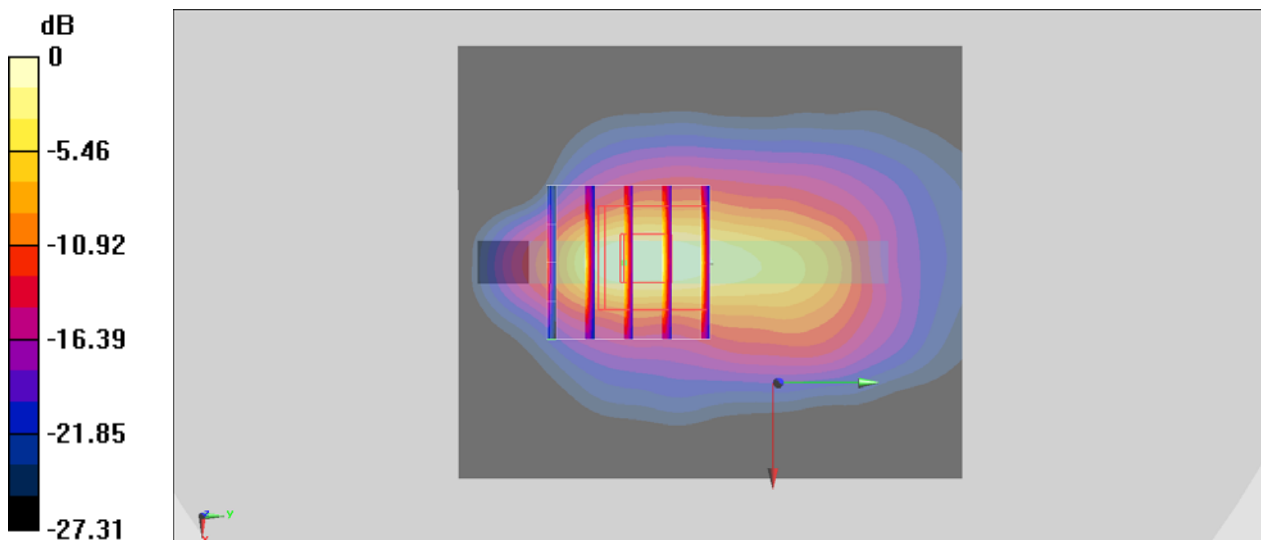
Communication System: WCDMA; Frequency: 1852.4 MHz; Duty Cycle: 1:1
Medium: HSL_1900_200421 Medium parameters used : $f = 1852.4$ MHz; $\sigma = 1.395$ S/m; $\epsilon_r = 38.38$; $\rho = 1000$ kg/m³
Ambient Temperature : 23.5 °C; Liquid Temperature : 22.5 °C

DASY5 Configuration

- Probe: ES3DV3 - SN3270; ConvF(5.2, 5.2, 5.2) @ 1852.4 MHz; Calibrated: 2019/9/25
- Sensor-Surface: 3mm (Mechanical Surface Detection)
- Electronics: DAE4 Sn778; Calibrated: 2019/5/21
- Phantom: Twin-SAM V5.0 (30deg probe tilt); Type: QD 000 P40 CD; Serial: 1885
- Measurement SW: DASY52, Version 52.10 (2); SEMCAD X Version 14.6.12 (7450)

Area Scan (61x71x1): Interpolated grid: dx=1.500 mm, dy=1.500 mm
Maximum value of SAR (interpolated) = 6.67 W/kg

Zoom Scan (5x5x7)/Cube 0: Measurement grid: dx=8mm, dy=8mm, dz=5mm
Reference Value = 73.24 V/m; Power Drift = 0.01 dB
Peak SAR (extrapolated) = 11.7 W/kg
SAR(1 g) = 4.21 W/kg; SAR(10 g) = 1.56 W/kg
Maximum value of SAR (measured) = 6.22 W/kg



0 dB = 6.22 W/kg = 7.94 dBW/kg

#30_LTE Band 7_20M_QPSK_1_0_Back_0mm_Ch21100

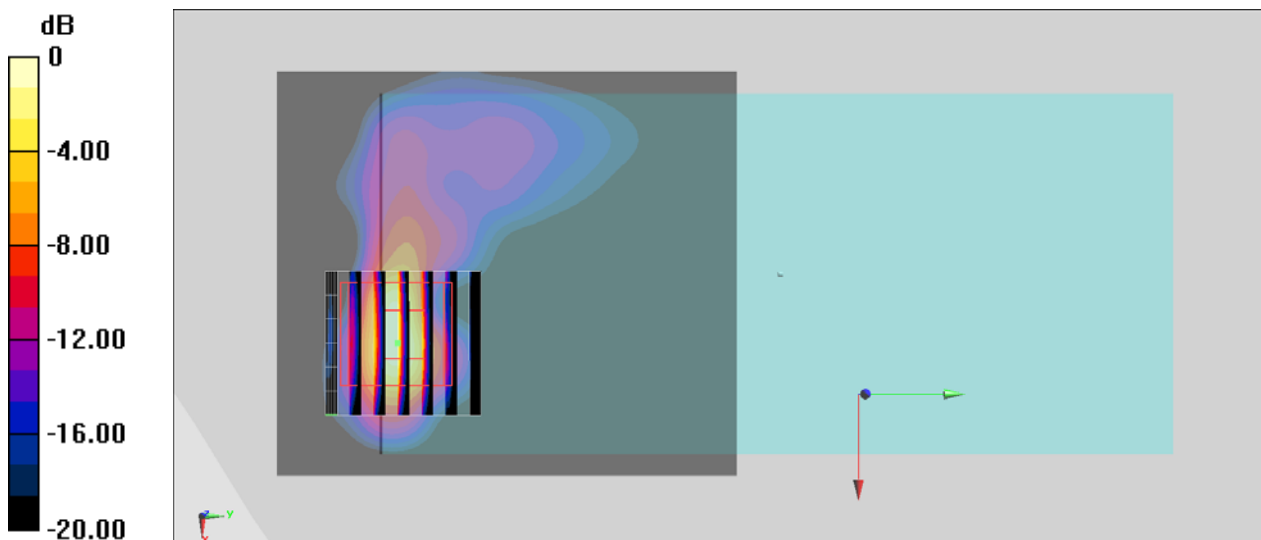
Communication System: LTE; Frequency: 2535 MHz; Duty Cycle: 1:1
Medium: HSL_2600_200422 Medium parameters used: $f = 2535 \text{ MHz}$; $\sigma = 1.898 \text{ S/m}$; $\epsilon_r = 39.48$; $\rho = 1000 \text{ kg/m}^3$
Ambient Temperature : $23.4 \text{ }^\circ\text{C}$; Liquid Temperature : $22.4 \text{ }^\circ\text{C}$

DASY5 Configuration

- Probe: ES3DV3 - SN3270; ConvF(4.51, 4.51, 4.51) @ 2535 MHz; Calibrated: 2019/9/25
- Sensor-Surface: 3mm (Mechanical Surface Detection)
- Electronics: DAE4 Sn778; Calibrated: 2019/5/21
- Phantom: Twin-SAM V5.0 (30deg probe tilt); Type: QD 000 P40 CD; Serial: 1885
- Measurement SW: DASY52, Version 52.10 (2); SEMCAD X Version 14.6.12 (7450)

Area Scan (71x81x1): Interpolated grid: $dx=1.200 \text{ mm}$, $dy=1.200 \text{ mm}$
Maximum value of SAR (interpolated) = 8.30 W/kg

Zoom Scan (7x7x7)/Cube 0: Measurement grid: $dx=5\text{mm}$, $dy=5\text{mm}$, $dz=5\text{mm}$
Reference Value = 59.62 V/m ; Power Drift = 0.13 dB
Peak SAR (extrapolated) = 22.5 W/kg
SAR(1 g) = 5.92 W/kg ; SAR(10 g) = 1.74 W/kg
Maximum value of SAR (measured) = 9.12 W/kg



0 dB = 9.12 W/kg = 9.60 dBW/kg

#31_LTE Band 41_20M_QPSK_1_0_Back_0mm_Ch40670

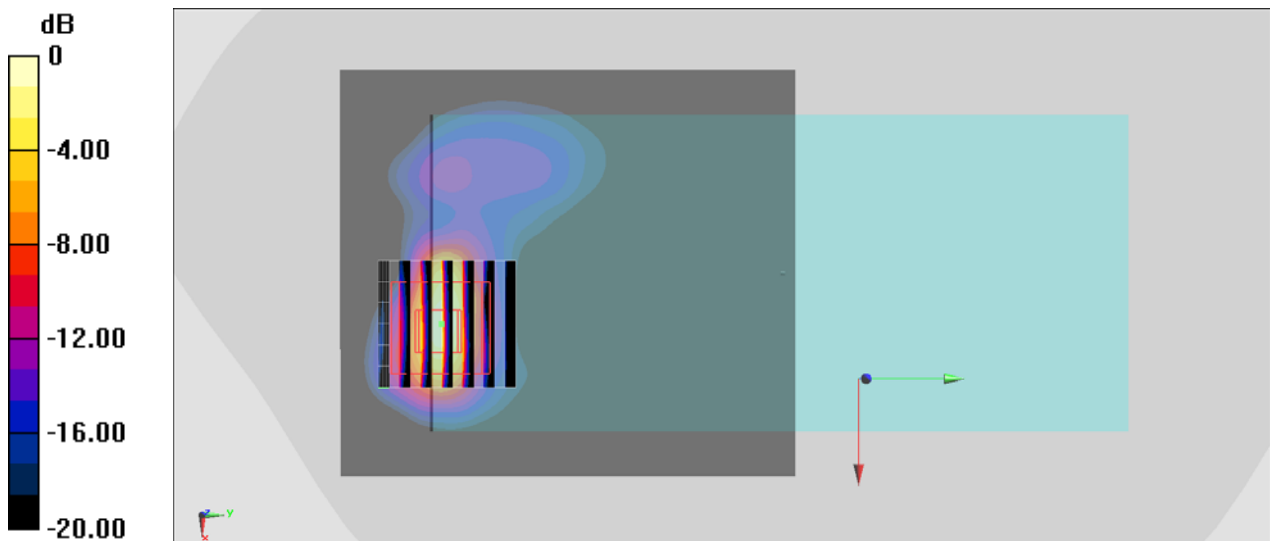
Communication System: LTE; Frequency: 2598 MHz; Duty Cycle: 1:1.59
 Medium: HSL_2600_200422 Medium parameters used: $f = 2598$ MHz; $\sigma = 1.976$ S/m; $\epsilon_r = 39.249$;
 $\rho = 1000$ kg/m³
 Ambient Temperature : 23.4 °C ; Liquid Temperature : 22.4 °C

DASY5 Configuration

- Probe: ES3DV3 - SN3270; ConvF(4.51, 4.51, 4.51) @ 2598 MHz; Calibrated: 2019/9/25
- Sensor-Surface: 3mm (Mechanical Surface Detection)
- Electronics: DAE4 Sn778; Calibrated: 2019/5/21
- Phantom: Twin-SAM V5.0 (30deg probe tilt); Type: QD 000 P40 CD; Serial: 1885
- Measurement SW: DASY52, Version 52.10 (2); SEMCAD X Version 14.6.12 (7450)

Area Scan (81x91x1): Interpolated grid: dx=1.200 mm, dy=1.200 mm
 Maximum value of SAR (interpolated) = 11.8 W/kg

Zoom Scan (7x7x7)/Cube 0: Measurement grid: dx=5mm, dy=5mm, dz=5mm
 Reference Value = 24.79 V/m; Power Drift = 0.04 dB
 Peak SAR (extrapolated) = 34.3 W/kg
SAR(1 g) = 6.98 W/kg; SAR(10 g) = 1.94 W/kg
 Maximum value of SAR (measured) = 12.3 W/kg



0 dB = 12.6 W/kg = 11.00 dBW/kg