

#01_GSM850_GPRS (4 Tx slots)_Left Cheek_Ch128

Communication System: GSM850 ; Frequency: 824.2 MHz; Duty Cycle: 1:2.08

Medium: HSL_850_200423 Medium parameters used : $f = 824.2$ MHz; $\sigma = 0.865$ S/m; $\epsilon_r = 42.009$; $\rho = 1000$ kg/m³

Ambient Temperature : 23.5 °C ; Liquid Temperature : 22.5 °C

DASY5 Configuration:

- Probe: EX3DV4 - SN7306; ConvF(9.73, 9.73, 9.73) @ 824.2 MHz; Calibrated: 2019/7/22
- Sensor-Surface: 1.4mm (Mechanical Surface Detection)
- Electronics: DAE3 Sn577; Calibrated: 2019/9/17
- Phantom: SAM_Left; Type: QD000P40CD; Serial: TP:1801
- Measurement SW: DASY52, Version 52.10 (4); SEMCAD X Version 14.6.14 (7483)

Area Scan (71x131x1): Interpolated grid: dx=1.500 mm, dy=1.500 mm

Maximum value of SAR (interpolated) = 0.198 W/kg

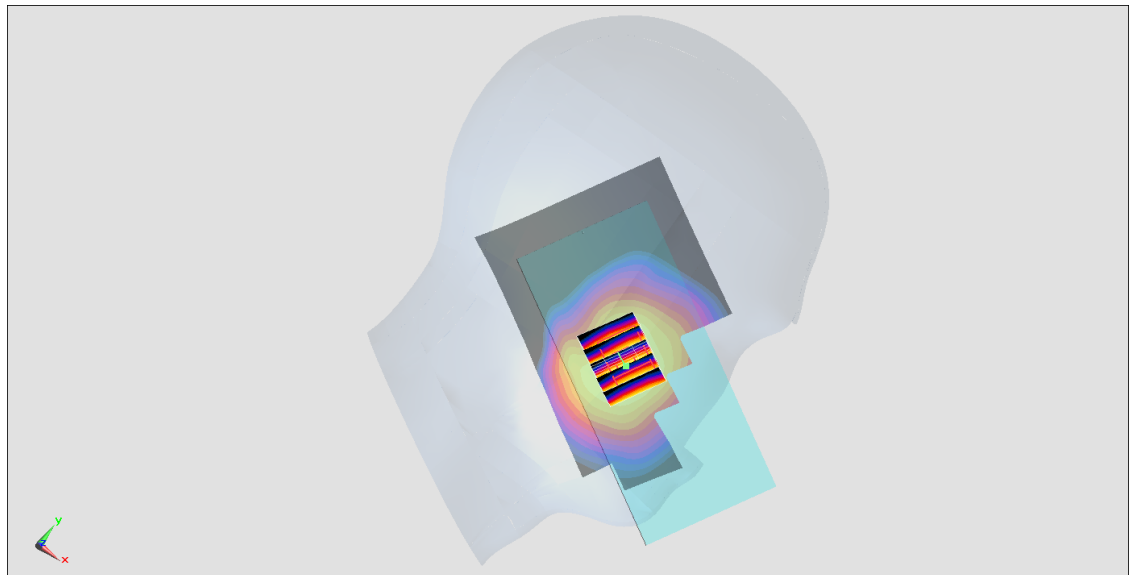
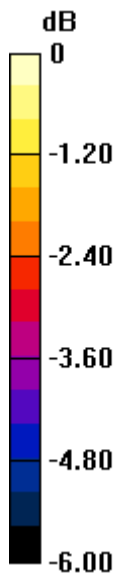
Zoom Scan (5x5x7)/Cube 0: Measurement grid: dx=8mm, dy=8mm, dz=5mm

Reference Value = 5.578 V/m; Power Drift = 0.18 dB

Peak SAR (extrapolated) = 0.228 W/kg

SAR(1 g) = 0.174 W/kg; SAR(10 g) = 0.135 W/kg

Maximum value of SAR (measured) = 0.215 W/kg



0 dB = 0.215 W/kg = -6.68 dBW/kg

#02_GSM1900_GPRS (4 Tx slots)_Right Cheek_Ch661

Communication System: PCS; Frequency: 1880 MHz; Duty Cycle: 1:2.08

Medium: HSL_1900_200424 Medium parameters used: $f = 1880$ MHz; $\sigma = 1.368$ S/m; $\epsilon_r = 40.776$; $\rho = 1000$ kg/m³

Ambient Temperature : 23.5 °C ; Liquid Temperature : 22.5 °C

DASY5 Configuration:

- Probe: EX3DV4 - SN7306; ConvF(8.15, 8.15, 8.15) @ 1880 MHz; Calibrated: 2019/7/22
- Sensor-Surface: 1.4mm (Mechanical Surface Detection)
- Electronics: DAE3 Sn577; Calibrated: 2019/9/17
- Phantom: SAM_Left; Type: QD000P40CD; Serial: TP:1801
- Measurement SW: DASY52, Version 52.10 (4); SEMCAD X Version 14.6.14 (7483)

Area Scan (71x131x1): Interpolated grid: dx=1.500 mm, dy=1.500 mm

Maximum value of SAR (interpolated) = 0.185 W/kg

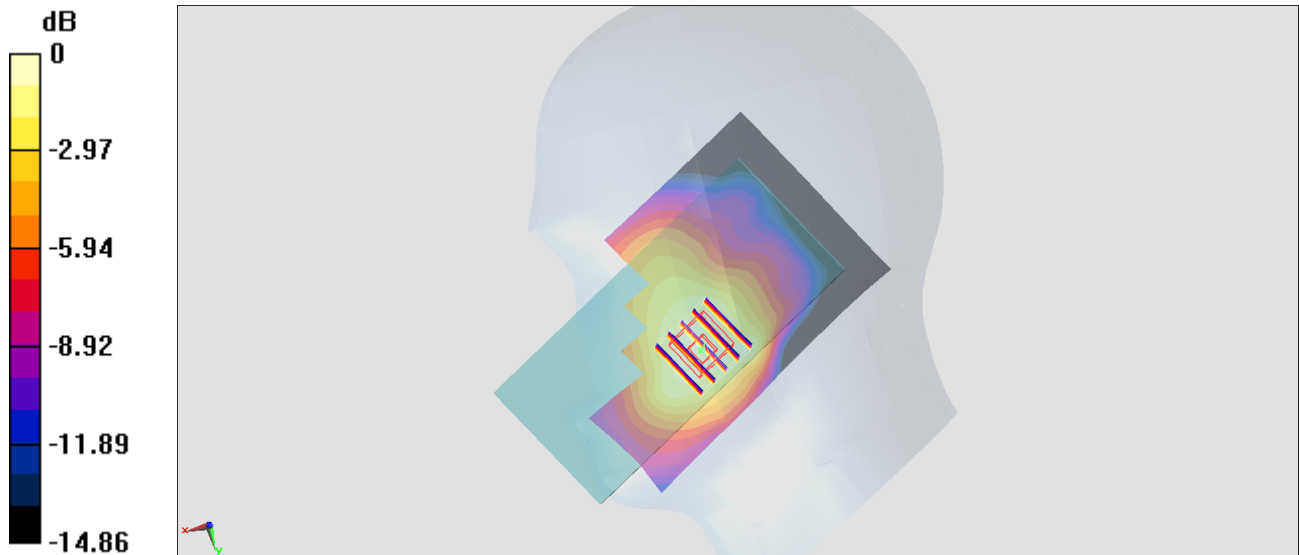
Zoom Scan (5x5x7)/Cube 0: Measurement grid: dx=8mm, dy=8mm, dz=5mm

Reference Value = 2.127 V/m; Power Drift = 0.08 dB

Peak SAR (extrapolated) = 0.217 W/kg

SAR(1 g) = 0.128 W/kg; SAR(10 g) = 0.085 W/kg

Maximum value of SAR (measured) = 0.185 W/kg



0 dB = 0.185 W/kg = -7.33 dBW/kg

#03_WCDMA II_RMC 12.2Kbps_Right Cheek_Ch9538

Communication System: WCDMA; Frequency: 1907.6 MHz; Duty Cycle: 1:1

Medium: HSL_1900_200424 Medium parameters used: $f = 1908$ MHz; $\sigma = 1.387$ S/m; $\epsilon_r = 40.66$; $\rho = 1000$ kg/m³

Ambient Temperature : 23.5 °C; Liquid Temperature : 22.5 °C

DASY5 Configuration:

- Probe: EX3DV4 - SN7306; ConvF(8.15, 8.15, 8.15) @ 1907.6 MHz; Calibrated: 2019/7/22
- Sensor-Surface: 1.4mm (Mechanical Surface Detection)
- Electronics: DAE3 Sn577; Calibrated: 2019/9/17
- Phantom: SAM_Left; Type: QD000P40CD; Serial: TP:1801
- Measurement SW: DASY52, Version 52.10 (4); SEMCAD X Version 14.6.14 (7483)

Area Scan (71x131x1): Interpolated grid: dx=1.500 mm, dy=1.500 mm

Maximum value of SAR (interpolated) = 0.254 W/kg

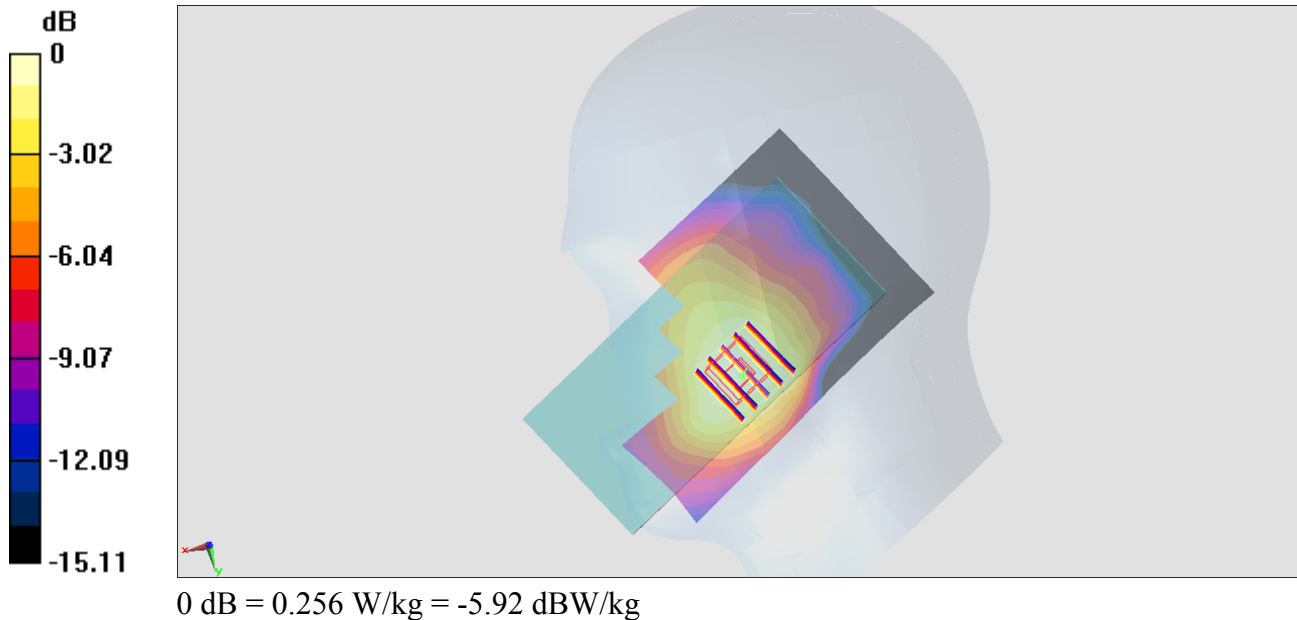
Zoom Scan (5x5x7)/Cube 0: Measurement grid: dx=8mm, dy=8mm, dz=5mm

Reference Value = 2.996 V/m; Power Drift = -0.02 dB

Peak SAR (extrapolated) = 0.302 W/kg

SAR(1 g) = 0.189 W/kg; SAR(10 g) = 0.119 W/kg

Maximum value of SAR (measured) = 0.256 W/kg



#04_WCDMA IV_RMC 12.2Kbps_Right Cheek_Ch1513

Communication System: WCDMA; Frequency: 1752.6 MHz; Duty Cycle: 1:1

Medium: HSL_1750_200424 Medium parameters used: $f = 1753$ MHz; $\sigma = 1.384$ S/m; $\epsilon_r = 41.523$; $\rho = 1000$ kg/m³

Ambient Temperature : 23.5 °C; Liquid Temperature : 22.5 °C

DASY5 Configuration:

- Probe: EX3DV4 - SN7306; ConvF(8.51, 8.51, 8.51) @ 1752.6 MHz; Calibrated: 2019/7/22
- Sensor-Surface: 1.4mm (Mechanical Surface Detection)
- Electronics: DAE3 Sn577; Calibrated: 2019/9/17
- Phantom: SAM_Left; Type: QD000P40CD; Serial: TP:1801
- Measurement SW: DASY52, Version 52.10 (4); SEMCAD X Version 14.6.14 (7483)

Area Scan (71x131x1): Interpolated grid: dx=1.500 mm, dy=1.500 mm

Maximum value of SAR (interpolated) = 0.188 W/kg

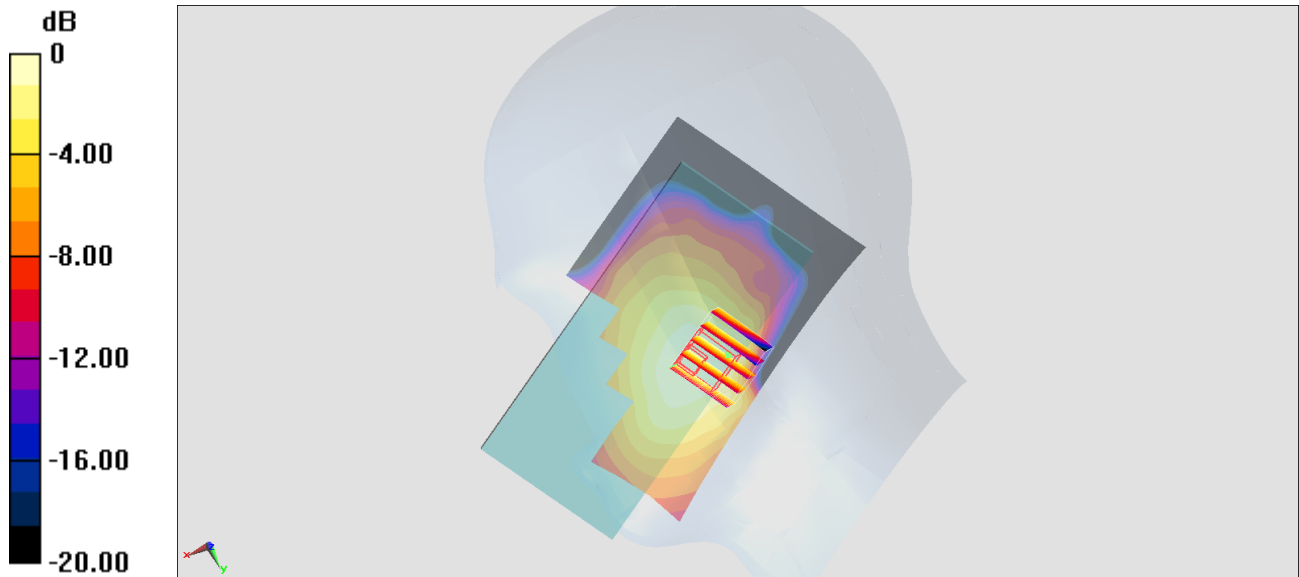
Zoom Scan (5x5x7)/Cube 0: Measurement grid: dx=8mm, dy=8mm, dz=5mm

Reference Value = 2.462 V/m; Power Drift = 0.10 dB

Peak SAR (extrapolated) = 0.210 W/kg

SAR(1 g) = 0.133 W/kg; SAR(10 g) = 0.080 W/kg

Maximum value of SAR (measured) = 0.179 W/kg



0 dB = 0.179 W/kg = -7.47 dBW/kg

#05_WCDMA V_RMC 12.2Kbps_Left Cheek_Ch4233

Communication System: WCDMA ; Frequency: 846.6 MHz; Duty Cycle: 1:1

Medium: HSL_850_200423 Medium parameters used: $f = 847$ MHz; $\sigma = 0.886$ S/m; $\epsilon_r = 41.724$; $\rho = 1000$ kg/m³

Ambient Temperature : 23.5 °C ; Liquid Temperature : 22.5 °C

DASY5 Configuration:

- Probe: EX3DV4 - SN7306; ConvF(9.73, 9.73, 9.73) @ 846.6 MHz; Calibrated: 2019/7/22
- Sensor-Surface: 1.4mm (Mechanical Surface Detection)
- Electronics: DAE3 Sn577; Calibrated: 2019/9/17
- Phantom: SAM_Left; Type: QD000P40CD; Serial: TP:1801
- Measurement SW: DASY52, Version 52.10 (4); SEMCAD X Version 14.6.14 (7483)

Area Scan (71x131x1): Interpolated grid: dx=1.500 mm, dy=1.500 mm

Maximum value of SAR (interpolated) = 0.148 W/kg

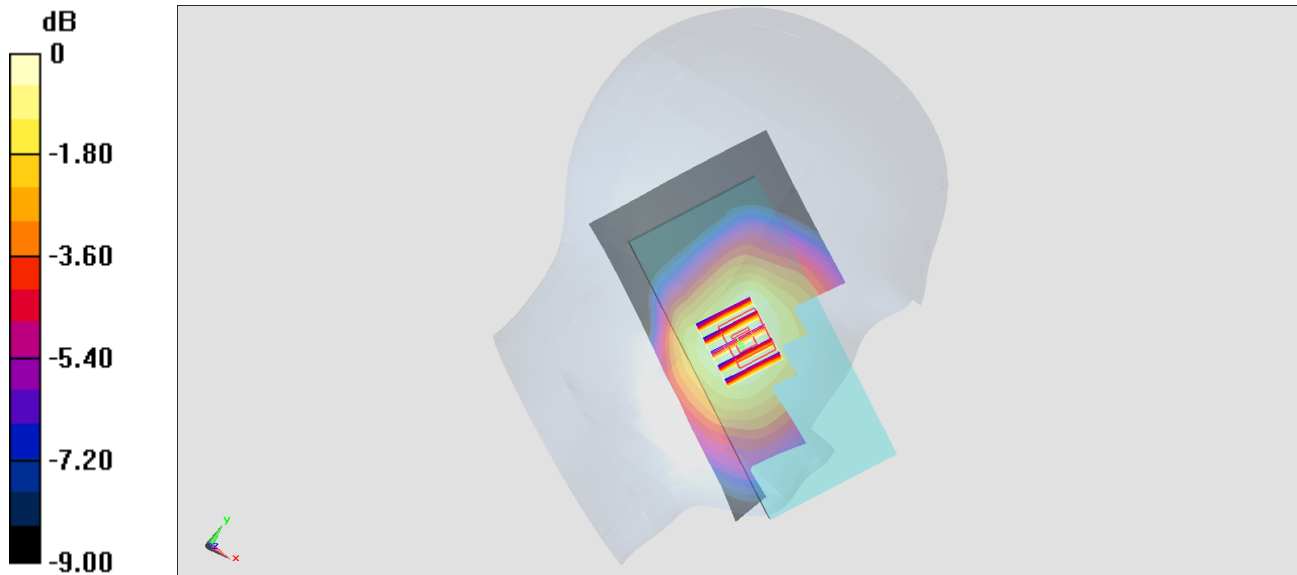
Zoom Scan (5x5x7)/Cube 0: Measurement grid: dx=8mm, dy=8mm, dz=5mm

Reference Value = 4.795 V/m; Power Drift = 0.12 dB

Peak SAR (extrapolated) = 0.168 W/kg

SAR(1 g) = 0.128 W/kg; SAR(10 g) = 0.099 W/kg

Maximum value of SAR (measured) = 0.157 W/kg



0 dB = 0.157 W/kg = -8.04 dBW/kg

#06_LTE Band 2_20M_QPSK_1_0_Right Cheek_Ch18900

Communication System: LTE ; Frequency: 1880 MHz;Duty Cycle: 1:1

Medium: HSL_1900_200424 Medium parameters used: $f = 1880$ MHz; $\sigma = 1.36$ S/m; $\epsilon_r = 40.776$; $\rho = 1000$ kg/m³

Ambient Temperature : 23.5 °C ; Liquid Temperature : 22.5 °C

DASY5 Configuration:

- Probe: EX3DV4 - SN7306;ConvF(8.15, 8.15, 8.15) @ 1880 MHz;Calibrated: 2019/7/22
- Sensor-Surface: 1.4mm (Mechanical Surface Detection)
- Electronics: DAE3 Sn577; Calibrated: 2019/9/17
- Phantom: SAM_Left; Type: QD000P40CD; Serial: TP:1801
- Measurement SW: DASY52, Version 52.10 (4);SEMCAD X Version 14.6.14 (7483)

Area Scan (71x131x1): Interpolated grid: dx=1.500 mm, dy=1.500 mm

Maximum value of SAR (interpolated) = 0.230 W/kg

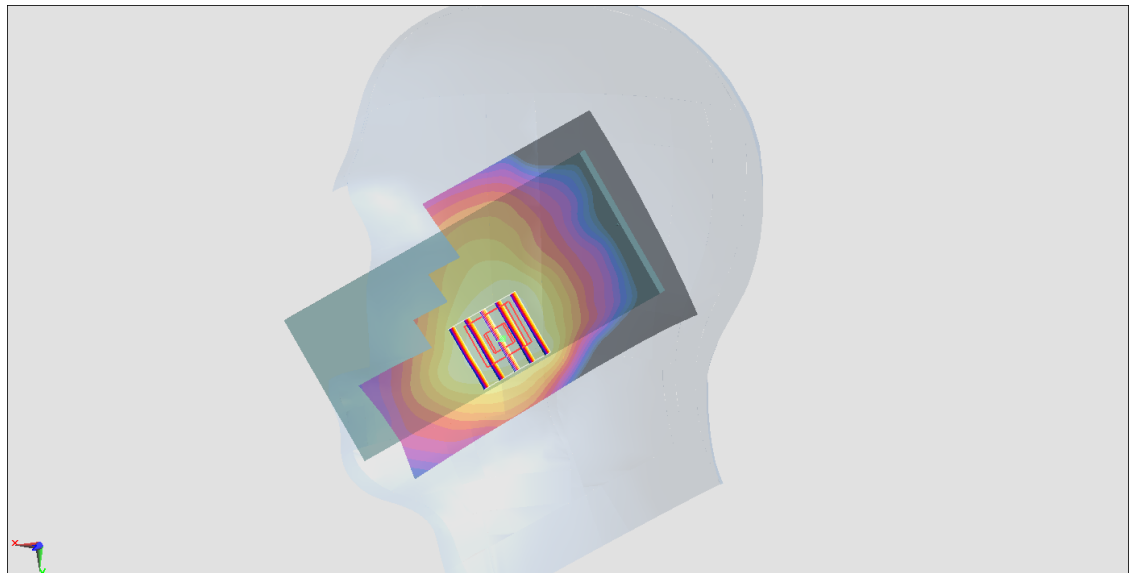
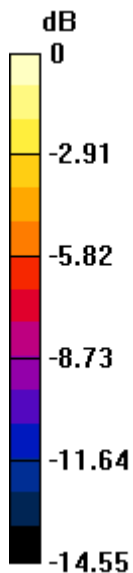
Zoom Scan (5x5x7)/Cube 0: Measurement grid: dx=8mm, dy=8mm, dz=5mm

Reference Value = 2.743 V/m; Power Drift = -0.12 dB

Peak SAR (extrapolated) = 0.271 W/kg

SAR(1 g) = 0.170 W/kg; SAR(10 g) = 0.108 W/kg

Maximum value of SAR (measured) = 0.228 W/kg



0 dB = 0.228 W/kg = -6.42 dBW/kg

#07_LTE Band 5_10M_QPSK_1_0_Left Cheek_Ch20525

Communication System: LTE ; Frequency: 836.5 MHz;Duty Cycle: 1:1

Medium: HSL_850_200423 Medium parameters used : $f = 836.5$ MHz; $\sigma = 0.877$ S/m; $\epsilon_r = 41.854$; $\rho = 1000$ kg/m³

Ambient Temperature : 23.5 °C ; Liquid Temperature : 22.5 °C

DASY5 Configuration:

- Probe: EX3DV4 - SN7306;ConvF(9.73, 9.73, 9.73) @ 836.5 MHz;Calibrated: 2019/7/22
- Sensor-Surface: 1.4mm (Mechanical Surface Detection)
- Electronics: DAE3 Sn577; Calibrated: 2019/9/17
- Phantom: SAM_Left; Type: QD000P40CD; Serial: TP:1801
- Measurement SW: DASY52, Version 52.10 (4);SEMCAD X Version 14.6.14 (7483)

Area Scan (71x131x1): Interpolated grid: dx=1.500 mm, dy=1.500 mm

Maximum value of SAR (interpolated) = 0.141 W/kg

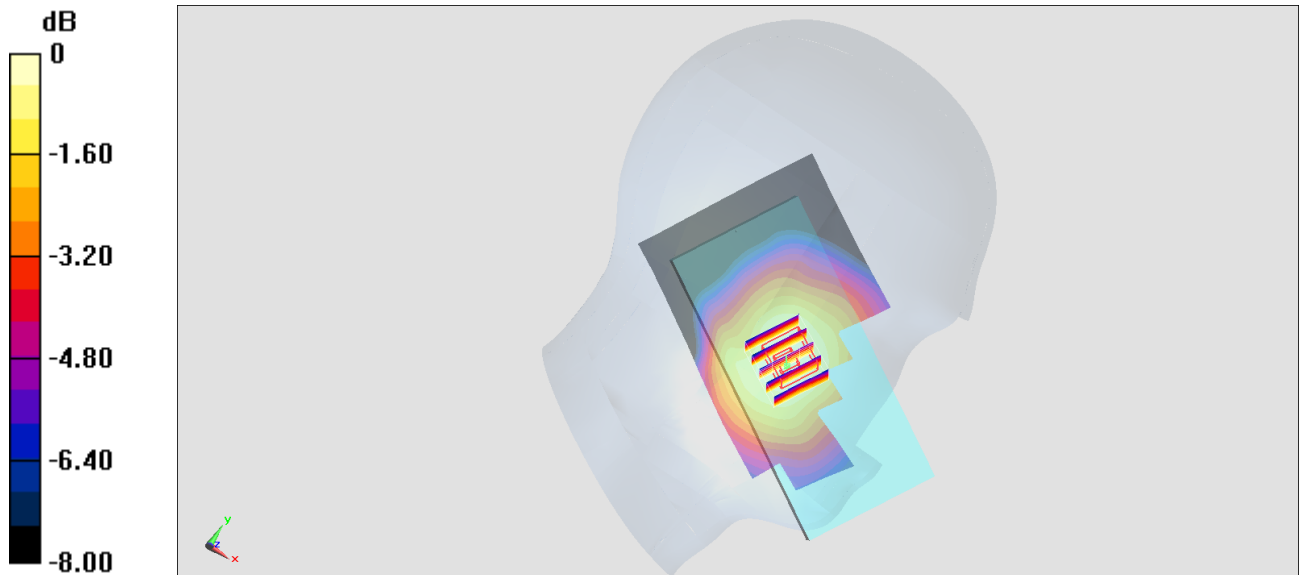
Zoom Scan (5x5x7)/Cube 0: Measurement grid: dx=8mm, dy=8mm, dz=5mm

Reference Value = 4.670 V/m; Power Drift = 0.02 dB

Peak SAR (extrapolated) = 0.151 W/kg

SAR(1 g) = 0.122 W/kg; SAR(10 g) = 0.095 W/kg

Maximum value of SAR (measured) = 0.143 W/kg



0 dB = 0.143 W/kg = -8.45 dBW/kg

#08_LTE Band 7_20M_QPSK_1_0_Right Cheek_Ch21100

Communication System: LTE; Frequency: 2535 MHz; Duty Cycle: 1:1

Medium: HSL_2600_200422 Medium parameters used : $f = 2535$ MHz; $\sigma = 1.883$ S/m; $\epsilon_r = 38.342$; $\rho = 1000$ kg/m³

Ambient Temperature : 23.5 °C ; Liquid Temperature : 22.5 °C

DASY5 Configuration:

- Probe: EX3DV4 - SN7306; ConvF(7.3, 7.3, 7.3) @ 2535 MHz; Calibrated: 2019/7/22
- Sensor-Surface: 1.4mm (Mechanical Surface Detection)
- Electronics: DAE3 Sn577; Calibrated: 2019/9/17
- Phantom: SAM_Left; Type: QD000P40CD; Serial: TP:1801
- Measurement SW: DASY52, Version 52.10 (4); SEMCAD X Version 14.6.14 (7483)

Area Scan (81x161x1): Interpolated grid: dx=1.200 mm, dy=1.200 mm

Maximum value of SAR (interpolated) = 0.0948 W/kg

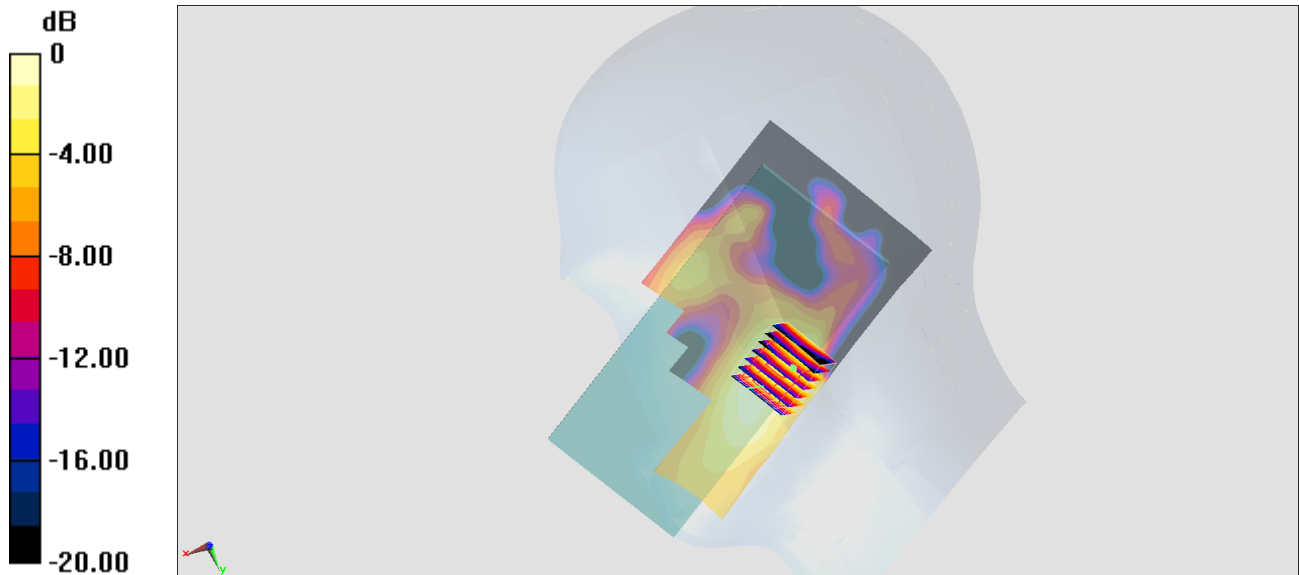
Zoom Scan (7x7x7)/Cube 0: Measurement grid: dx=5mm, dy=5mm, dz=5mm

Reference Value = 2.967 V/m; Power Drift = -0.18 dB

Peak SAR (extrapolated) = 0.110 W/kg

SAR(1 g) = 0.061 W/kg; SAR(10 g) = 0.034 W/kg

Maximum value of SAR (measured) = 0.0906 W/kg



0 dB = 0.0906 W/kg = -10.43 dBW/kg

#09_LTE Band 66_20M_QPSK_1_0_Right Cheek_Ch132322

Communication System: LTE ; Frequency: 1745 MHz;Duty Cycle: 1:1

Medium: HSL_1750_200424 Medium parameters used : $f = 1745$ MHz; $\sigma = 1.377$ S/m; $\epsilon_r = 41.548$; $\rho = 1000$ kg/m³

Ambient Temperature : 23.5 °C ; Liquid Temperature : 22.5 °C

DASY5 Configuration:

- Probe: EX3DV4 - SN7306;ConvF(8.51, 8.51, 8.51) @ 1745 MHz;Calibrated: 2019/7/22
- Sensor-Surface: 1.4mm (Mechanical Surface Detection)
- Electronics: DAE3 Sn577; Calibrated: 2019/9/17
- Phantom: SAM_Left; Type: QD000P40CD; Serial: TP:1801
- Measurement SW: DASY52, Version 52.10 (4);SEMCAD X Version 14.6.14 (7483)

Area Scan (71x131x1): Interpolated grid: dx=1.500 mm, dy=1.500 mm

Maximum value of SAR (interpolated) = 0.156 W/kg

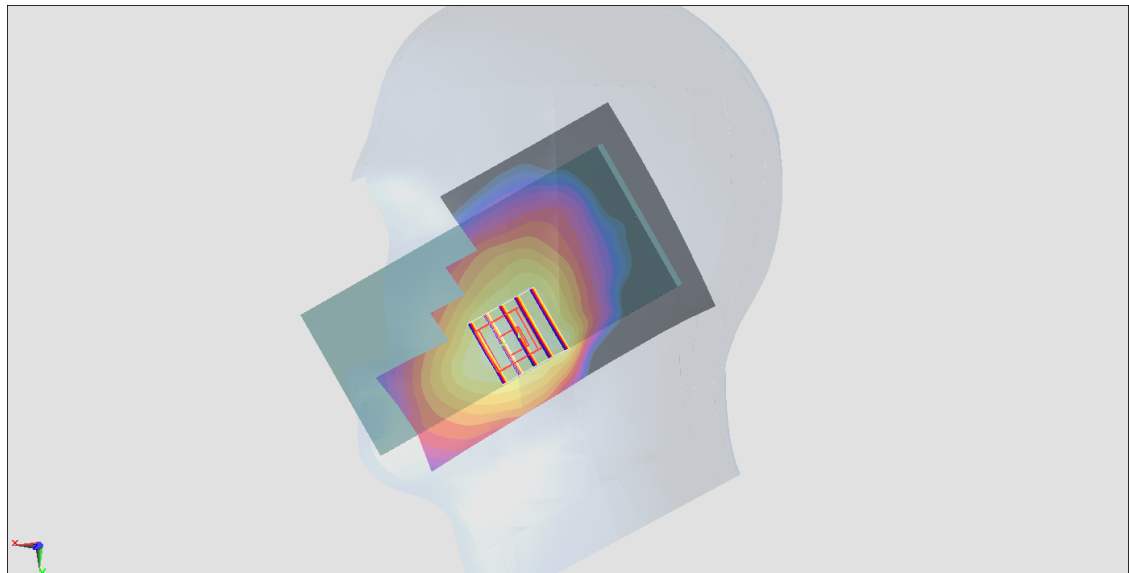
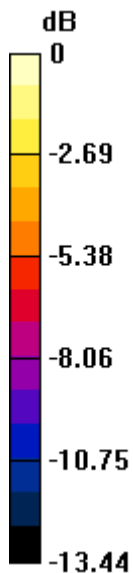
Zoom Scan (5x5x7)/Cube 0: Measurement grid: dx=8mm, dy=8mm, dz=5mm

Reference Value = 1.665 V/m; Power Drift = 0.11 dB

Peak SAR (extrapolated) = 0.197 W/kg

SAR(1 g) = 0.122 W/kg; SAR(10 g) = 0.079 W/kg

Maximum value of SAR (measured) = 0.163 W/kg



0 dB = 0.163 W/kg = -7.88 dBW/kg

#10_WLAN2.4GHz__802.11b 1Mbps_Left Tilted_Ch6

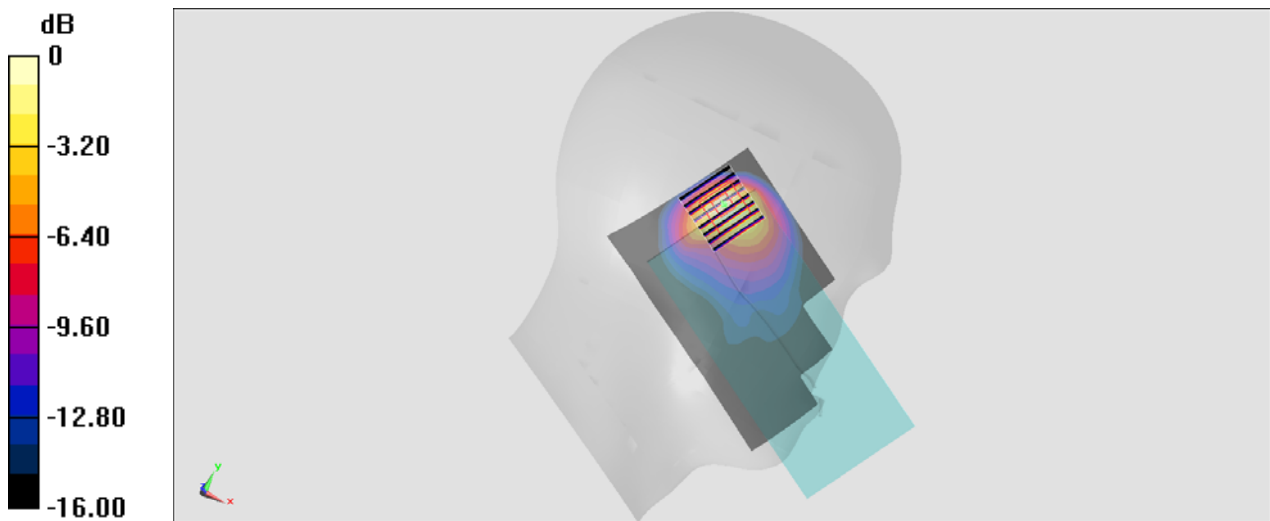
Communication System: 802.11b ; Frequency: 2437 MHz;Duty Cycle: 1:1
Medium: HSL_2450_200430 Medium parameters used : $f = 2437$ MHz; $\sigma = 1.815$ S/m; $\epsilon_r = 39.208$;
 $\rho = 1000$ kg/m³
Ambient Temperature : 23.4 °C ; Liquid Temperature : 22.4 °C

DASY5 Configuration

- Probe: ES3DV3 - SN3270;ConvF(4.57, 4.57, 4.57) @ 2437 MHz;Calibrated: 2019/9/25
- Sensor-Surface: 3mm (Mechanical Surface Detection)
- Electronics: DAE4 Sn778; Calibrated: 2019/5/21
- Phantom: Twin-SAM V5.0 (30deg probe tilt); Type: QD 000 P40 CD; Serial: 1885
- Measurement SW: DASY52, Version 52.10 (4); SEMCAD X Version 14.6.14 (7483)

Area Scan (81x161x1): Interpolated grid: dx=1.200 mm, dy=1.200 mm
Maximum value of SAR (interpolated) = 1.00 W/kg

Zoom Scan (8x8x7)/Cube 0: Measurement grid: dx=5mm, dy=5mm, dz=5mm
Reference Value = 15.46 V/m; Power Drift = 0.01 dB
Peak SAR (extrapolated) = 2.17 W/kg
SAR(1 g) = 0.788 W/kg; SAR(10 g) = 0.349 W/kg
Maximum value of SAR (measured) = 1.02 W/kg



0 dB = 1.02 W/kg = 0.09 dBW/kg

#11_Bluetooth_1Mbps_Left Tilted_Ch39

Communication System: Bluetooth; Frequency: 2441 MHz; Duty Cycle: 1:1.301

Medium: HSL_2450_200425 Medium parameters used : $f = 2441$ MHz; $\sigma = 1.782$ S/m; $\epsilon_r = 39.033$; $\rho = 1000$ kg/m³

Ambient Temperature : 23.5 °C ; Liquid Temperature : 22.5 °C

DASY5 Configuration:

- Probe: EX3DV4 - SN7306; ConvF(7.48, 7.48, 7.48) @ 2441 MHz; Calibrated: 2019/7/22
- Sensor-Surface: 1.4mm (Mechanical Surface Detection)
- Electronics: DAE3 Sn577; Calibrated: 2019/9/17
- Phantom: SAM_Left; Type: QD000P40CD; Serial: TP:1801
- Measurement SW: DASY52, Version 52.10 (4); SEMCAD X Version 14.6.14 (7483)

Area Scan (81x161x1): Interpolated grid: dx=1.200 mm, dy=1.200 mm

Maximum value of SAR (interpolated) = 0.743 W/kg

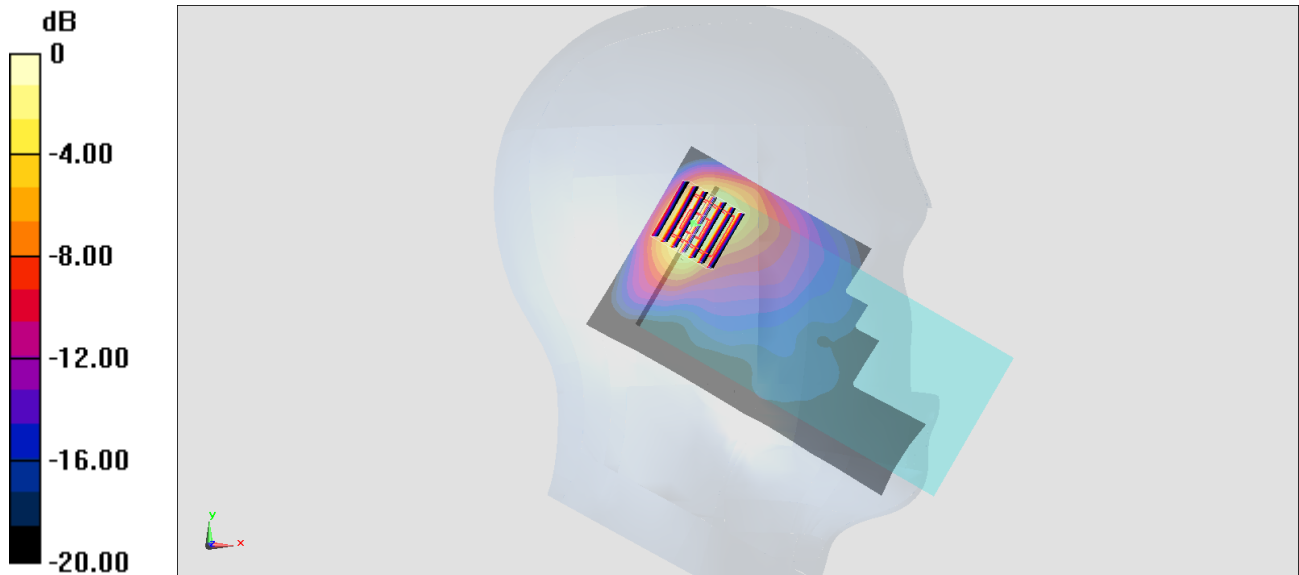
Zoom Scan (7x7x7)/Cube 0: Measurement grid: dx=5mm, dy=5mm, dz=5mm

Reference Value = 16.31 V/m; Power Drift = -0.08 dB

Peak SAR (extrapolated) = 1.12 W/kg

SAR(1 g) = 0.452 W/kg; SAR(10 g) = 0.203 W/kg

Maximum value of SAR (measured) = 0.846 W/kg



0 dB = 0.846 W/kg = -0.73 dBW/kg

#12_GSM850_GPRS (4 Tx slots)_Back_5mm_Ch128

Communication System: GSM850; Frequency: 824.2 MHz; Duty Cycle: 1:2.08

Medium: HSL_850_200425 Medium parameters used : $f = 824.2$ MHz; $\sigma = 0.88$ S/m; $\epsilon_r = 42.583$; $\rho = 1000$ kg/m³

Ambient Temperature : 23.5 °C ; Liquid Temperature : 22.5 °C

DASY5 Configuration

- Probe: ES3DV3 - SN3270; ConvF(6.43, 6.43, 6.43) @ 824.2 MHz; Calibrated: 2019/9/25
- Sensor-Surface: 3mm (Mechanical Surface Detection)
- Electronics: DAE4 Sn778; Calibrated: 2019/5/21
- Phantom: Twin-SAM V5.0 (30deg probe tilt); Type: QD 000 P40 CD; Serial: 1885
- Measurement SW: DASY52, Version 52.10 (2); SEMCAD X Version 14.6.12 (7450)

Area Scan (71x71x1): Interpolated grid: dx=1.500 mm, dy=1.500 mm

Maximum value of SAR (interpolated) = 0.378 W/kg

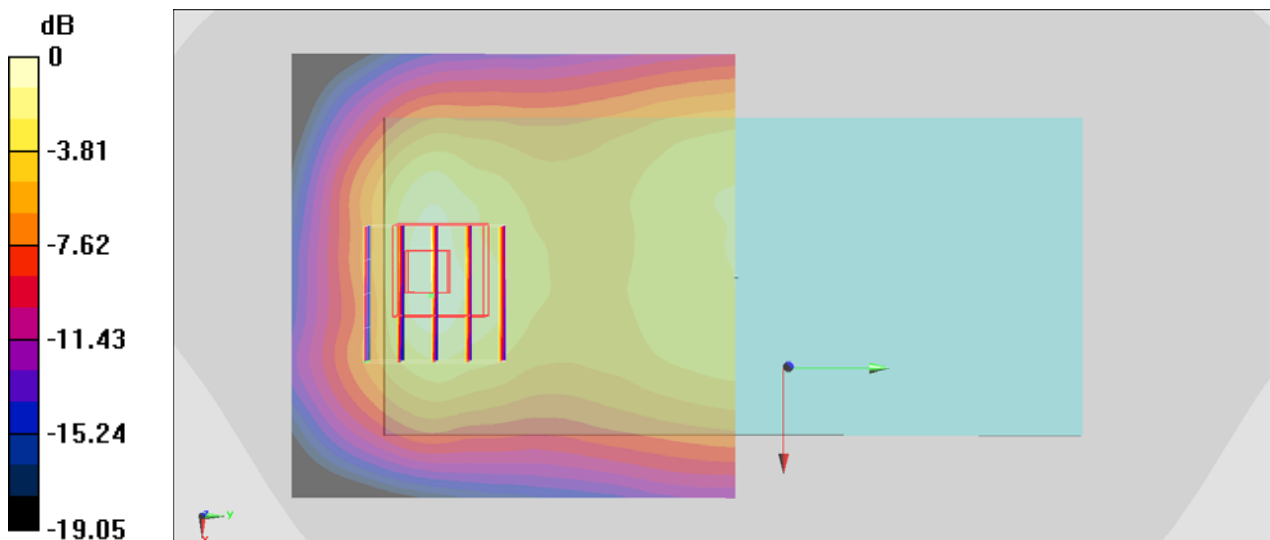
Zoom Scan (5x5x7)/Cube 0: Measurement grid: dx=8mm, dy=8mm, dz=5mm

Reference Value = 17.55 V/m; Power Drift = 0.03 dB

Peak SAR (extrapolated) = 0.720 W/kg

SAR(1 g) = 0.324 W/kg; SAR(10 g) = 0.172 W/kg

Maximum value of SAR (measured) = 0.392 W/kg



0 dB = 0.392 W/kg = -4.07 dBW/kg

#13_GSM1900_GPRS (4 Tx slots)_Bottom Side_5mm_Ch661

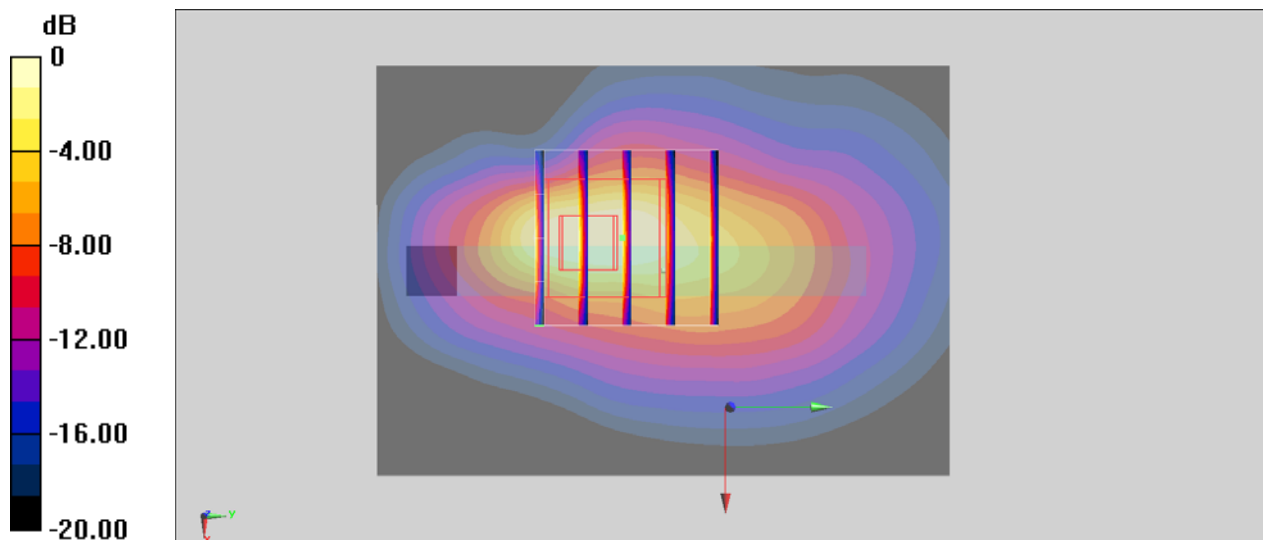
Communication System: PCS ; Frequency: 1880 MHz;Duty Cycle: 1:2.08
 Medium: HSL_1900_200423 Medium parameters used: $f = 1880$ MHz; $\sigma = 1.397$ S/m; $\epsilon_r = 39.278$;
 $\rho = 1000$ kg/m³
 Ambient Temperature : 23.4 °C ; Liquid Temperature : 22.4 °C

DASY5 Configuration

- Probe: ES3DV3 - SN3270;ConvF(5.2, 5.2, 5.2) @ 1880 MHz;Calibrated: 2019/9/25
- Sensor-Surface: 3mm (Mechanical Surface Detection)
- Electronics: DAE4 Sn778; Calibrated: 2019/5/21
- Phantom: Twin-SAM V5.0 (30deg probe tilt); Type: QD 000 P40 CD; Serial: 1885
- Measurement SW: DASY52, Version 52.10 (2); SEMCAD X Version 14.6.12 (7450)

Area Scan (51x71x1): Interpolated grid: dx=1.500 mm, dy=1.500 mm
 Maximum value of SAR (interpolated) = 1.64 W/kg

Zoom Scan (5x5x7)/Cube 0: Measurement grid: dx=8mm, dy=8mm, dz=5mm
 Reference Value = 28.77 V/m; Power Drift = 0.03 dB
 Peak SAR (extrapolated) = 2.63 W/kg
SAR(1 g) = 1.05 W/kg; SAR(10 g) = 0.480 W/kg
 Maximum value of SAR (measured) = 1.50 W/kg



0 dB = 1.50 W/kg = 1.76 dBW/kg

#14_WCDMA II_RMC 12.2Kbps_Bottom Side_5mm_Ch9262

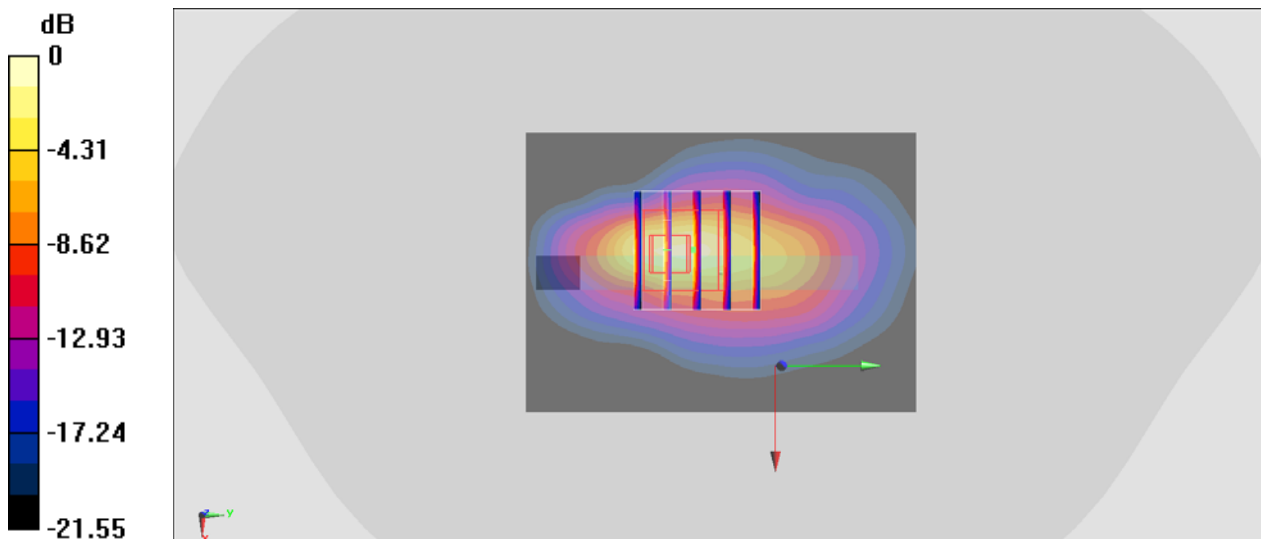
Communication System: WCDMA ; Frequency: 1852.4 MHz;Duty Cycle: 1:1
Medium: HSL_1900_200423 Medium parameters used : $f = 1852.4$ MHz; $\sigma = 1.374$ S/m; $\epsilon_r = 39.363$; $\rho = 1000$ kg/m³
Ambient Temperature : 23.4 °C ; Liquid Temperature : 22.4 °C

DASY5 Configuration

- Probe: ES3DV3 - SN3270;ConvF(5.2, 5.2, 5.2) @ 1852.4 MHz;Calibrated: 2019/9/25
- Sensor-Surface: 3mm (Mechanical Surface Detection)
- Electronics: DAE4 Sn778; Calibrated: 2019/5/21
- Phantom: Twin-SAM V5.0 (30deg probe tilt); Type: QD 000 P40 CD; Serial: 1885
- Measurement SW: DASY52, Version 52.10 (2); SEMCAD X Version 14.6.12 (7450)

Area Scan (51x71x1): Interpolated grid: dx=1.500 mm, dy=1.500 mm
Maximum value of SAR (interpolated) = 1.08 W/kg

Zoom Scan (5x5x7)/Cube 0: Measurement grid: dx=8mm, dy=8mm, dz=5mm
Reference Value = 26.14 V/m; Power Drift = 0.11 dB
Peak SAR (extrapolated) = 2.64 W/kg
SAR(1 g) = 1.02 W/kg; SAR(10 g) = 0.415 W/kg
Maximum value of SAR (measured) = 1.40 W/kg



0 dB = 1.40 W/kg = 1.46 dBW/kg

#15_WCDMA IV_RMC 12.2Kbps_Bottom Side_5mm_Ch1413

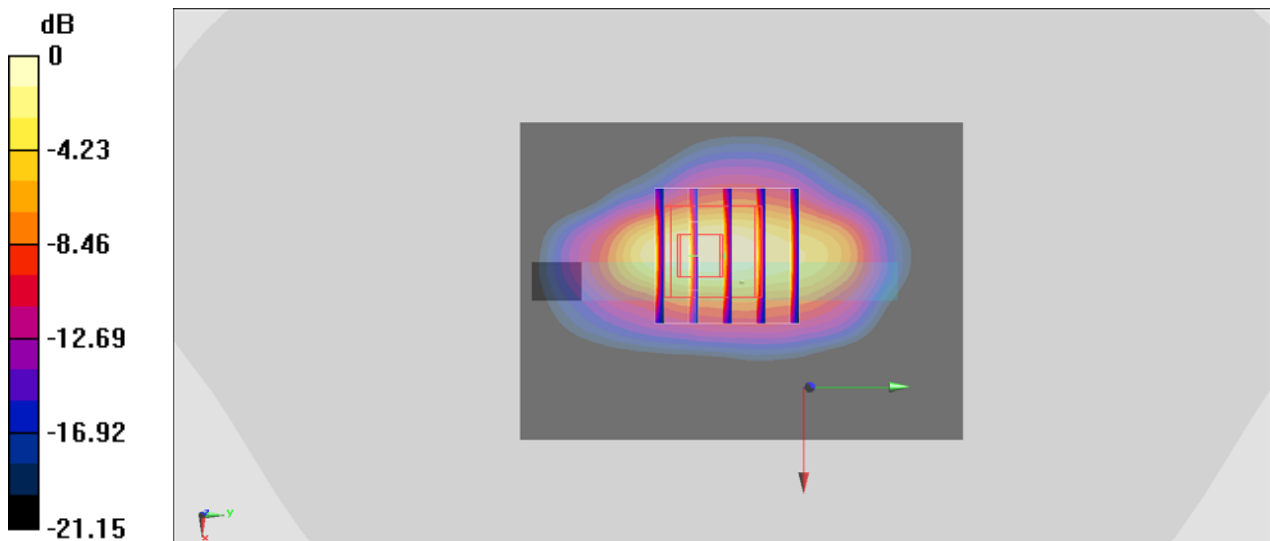
Communication System: WCDMA ; Frequency: 1732.6 MHz;Duty Cycle: 1:1
 Medium: HSL_1750_200423 Medium parameters used: $f = 1733 \text{ MHz}$; $\sigma = 1.354 \text{ S/m}$; $\epsilon_r = 40.635$;
 $\rho = 1000 \text{ kg/m}^3$
 Ambient Temperature : $23.4 \text{ }^\circ\text{C}$; Liquid Temperature : $22.4 \text{ }^\circ\text{C}$

DASY5 Configuration

- Probe: ES3DV3 - SN3270;ConvF(5.41, 5.41, 5.41) @ 1732.6 MHz;Calibrated: 2019/9/25
- Sensor-Surface: 3mm (Mechanical Surface Detection)
- Electronics: DAE4 Sn778; Calibrated: 2019/5/21
- Phantom: Twin-SAM V5.0 (30deg probe tilt); Type: QD 000 P40 CD; Serial: 1885
- Measurement SW: DASY52, Version 52.10 (2); SEMCAD X Version 14.6.12 (7450)

Area Scan (51x71x1): Interpolated grid: $dx=1.500 \text{ mm}$, $dy=1.500 \text{ mm}$
 Maximum value of SAR (interpolated) = 1.29 W/kg

Zoom Scan (5x5x7)/Cube 0: Measurement grid: $dx=8\text{mm}$, $dy=8\text{mm}$, $dz=5\text{mm}$
 Reference Value = 26.05 V/m ; Power Drift = 0.14 dB
 Peak SAR (extrapolated) = 2.78 W/kg
SAR(1 g) = 1.01 W/kg ; SAR(10 g) = 0.436 W/kg
 Maximum value of SAR (measured) = 1.32 W/kg



0 dB = $1.32 \text{ W/kg} = 1.21 \text{ dBW/kg}$

#16_WCDMA V_RMC 12.2Kbps_Back_5mm_Ch4233

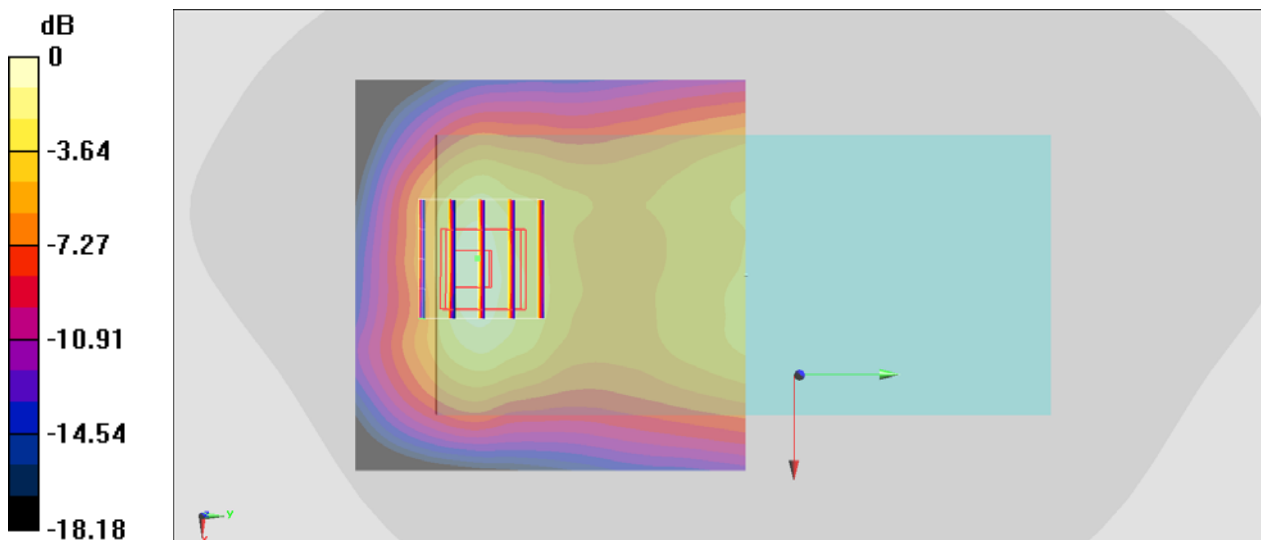
Communication System: WCDMA; Frequency: 846.6 MHz; Duty Cycle: 1:1
Medium: HSL_850_200425 Medium parameters used: $f = 847$ MHz; $\sigma = 0.901$ S/m; $\epsilon_r = 42.254$; $\rho = 1000$ kg/m³
Ambient Temperature : 23.5 °C; Liquid Temperature : 22.5 °C

DASY5 Configuration

- Probe: ES3DV3 - SN3270; ConvF(6.43, 6.43, 6.43) @ 846.6 MHz; Calibrated: 2019/9/25
- Sensor-Surface: 3mm (Mechanical Surface Detection)
- Electronics: DAE4 Sn778; Calibrated: 2019/5/21
- Phantom: Twin-SAM V5.0 (30deg probe tilt); Type: QD 000 P40 CD; Serial: 1885
- Measurement SW: DASY52, Version 52.10 (2); SEMCAD X Version 14.6.12 (7450)

Area Scan (71x71x1): Interpolated grid: dx=1.500 mm, dy=1.500 mm
Maximum value of SAR (interpolated) = 0.326 W/kg

Zoom Scan (5x5x7)/Cube 0: Measurement grid: dx=8mm, dy=8mm, dz=5mm
Reference Value = 17.80 V/m; Power Drift = 0.15 dB
Peak SAR (extrapolated) = 0.612 W/kg
SAR(1 g) = 0.288 W/kg; SAR(10 g) = 0.154 W/kg
Maximum value of SAR (measured) = 0.341 W/kg



0 dB = 0.341 W/kg = -4.67 dBW/kg

#17_LTE Band 2_20M_QPSK_1_0_Bottom Side_5mm_Ch18700

Communication System: LTE; Frequency: 1860 MHz; Duty Cycle: 1:1

Medium: HSL_1900_200423 Medium parameters used: $f = 1860$ MHz; $\sigma = 1.381$ S/m; $\epsilon_r = 39.343$;
 $\rho = 1000$ kg/m³

Ambient Temperature : 23.4 °C ; Liquid Temperature : 22.4 °C

DASY5 Configuration

- Probe: ES3DV3 - SN3270; ConvF(5.2, 5.2, 5.2) @ 1860 MHz; Calibrated: 2019/9/25
- Sensor-Surface: 3mm (Mechanical Surface Detection)
- Electronics: DAE4 Sn778; Calibrated: 2019/5/21
- Phantom: Twin-SAM V5.0 (30deg probe tilt); Type: QD 000 P40 CD; Serial: 1885
- Measurement SW: DASY52, Version 52.10 (2); SEMCAD X Version 14.6.12 (7450)

Area Scan (51x71x1): Interpolated grid: dx=1.500 mm, dy=1.500 mm

Maximum value of SAR (interpolated) = 1.04 W/kg

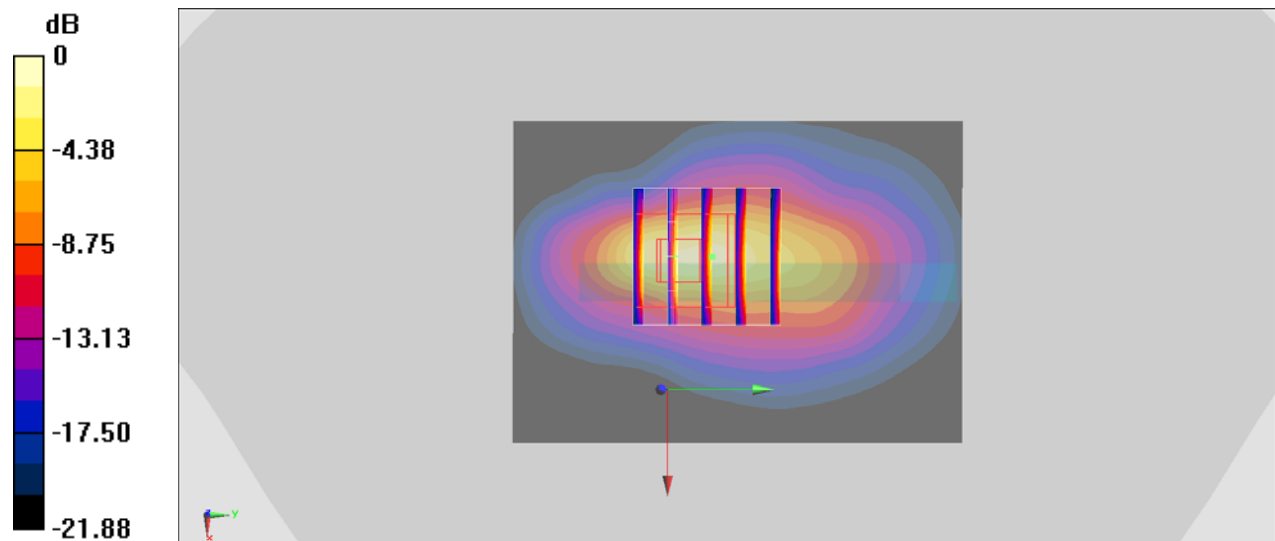
Zoom Scan (5x5x7)/Cube 0: Measurement grid: dx=8mm, dy=8mm, dz=5mm

Reference Value = 24.68 V/m; Power Drift = 0.16 dB

Peak SAR (extrapolated) = 2.36 W/kg

SAR(1 g) = 0.950 W/kg; SAR(10 g) = 0.394 W/kg

Maximum value of SAR (measured) = 1.32 W/kg



0 dB = 1.32 W/kg = 1.21 dBW/kg

#18_LTE Band 5_10M_QPSK_1_0_Back_5mm_Ch20525

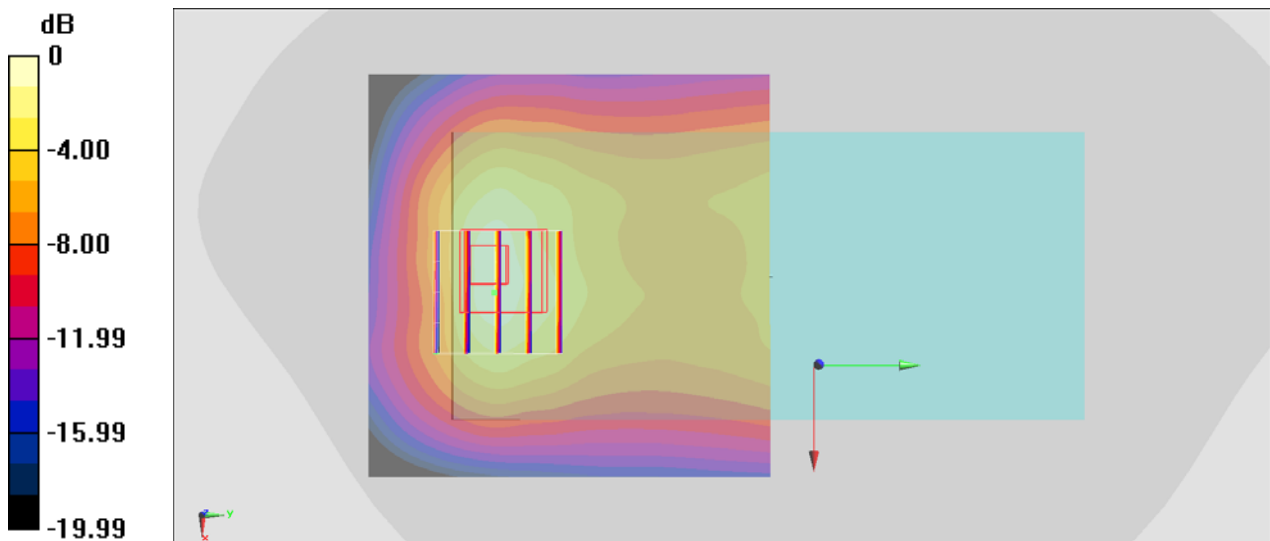
Communication System: LTE; Frequency: 836.5 MHz; Duty Cycle: 1:1
 Medium: HSL_850_200425 Medium parameters used : $f = 836.5 \text{ MHz}$; $\sigma = 0.891 \text{ S/m}$; $\epsilon_r = 42.409$;
 $\rho = 1000 \text{ kg/m}^3$
 Ambient Temperature : $23.5 \text{ }^\circ\text{C}$; Liquid Temperature : $22.5 \text{ }^\circ\text{C}$

DASY5 Configuration

- Probe: ES3DV3 - SN3270; ConvF(6.43, 6.43, 6.43) @ 836.5 MHz; Calibrated: 2019/9/25
- Sensor-Surface: 3mm (Mechanical Surface Detection)
- Electronics: DAE4 Sn778; Calibrated: 2019/5/21
- Phantom: Twin-SAM V5.0 (30deg probe tilt); Type: QD 000 P40 CD; Serial: 1885
- Measurement SW: DASY52, Version 52.10 (2); SEMCAD X Version 14.6.12 (7450)

Area Scan (71x71x1): Interpolated grid: $dx=1.500 \text{ mm}$, $dy=1.500 \text{ mm}$
 Maximum value of SAR (interpolated) = 0.360 W/kg

Zoom Scan (5x5x7)/Cube 0: Measurement grid: $dx=8\text{mm}$, $dy=8\text{mm}$, $dz=5\text{mm}$
 Reference Value = 17.88 V/m ; Power Drift = 0.03 dB
 Peak SAR (extrapolated) = 0.671 W/kg
SAR(1 g) = 0.323 W/kg ; SAR(10 g) = 0.174 W/kg
 Maximum value of SAR (measured) = 0.387 W/kg



$0 \text{ dB} = 0.387 \text{ W/kg} = -4.12 \text{ dBW/kg}$

#19_LTE Band 7_20M_QPSK_1_0_Back_5mm_Ch21350

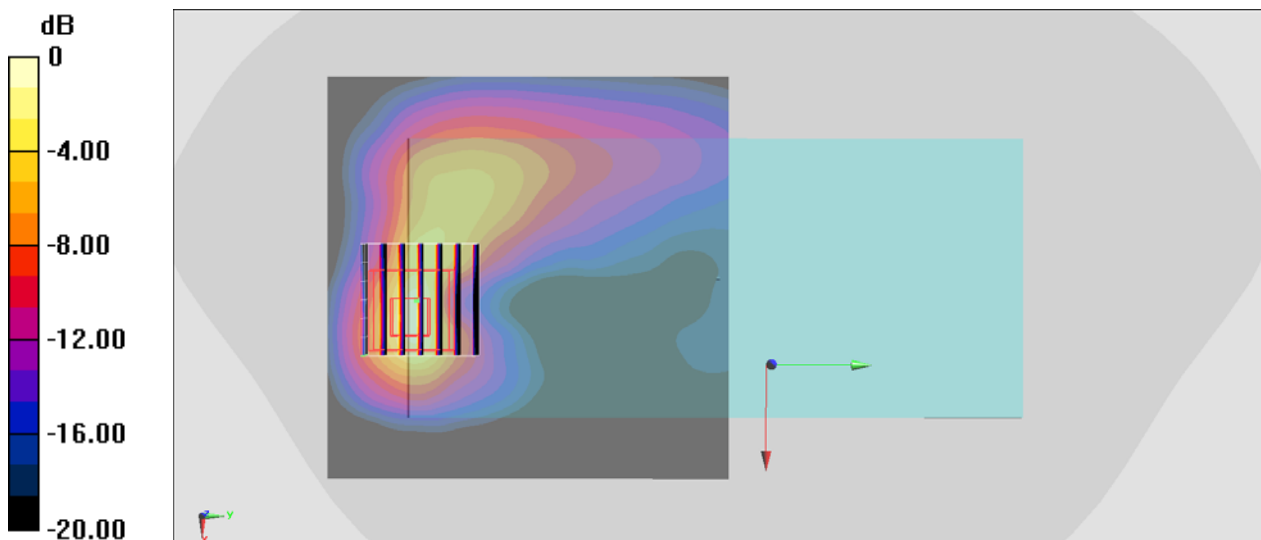
Communication System: LTE ; Frequency: 2560 MHz;Duty Cycle: 1:1
Medium: HSL_2600_200424 Medium parameters used: $f = 2560$ MHz; $\sigma = 1.906$ S/m; $\epsilon_r = 40.595$;
 $\rho = 1000$ kg/m³
Ambient Temperature : 23.4 °C ; Liquid Temperature : 22.4 °C

DASY5 Configuration

- Probe: ES3DV3 - SN3270;ConvF(4.51, 4.51, 4.51) @ 2560 MHz;Calibrated: 2019/9/25
- Sensor-Surface: 3mm (Mechanical Surface Detection)
- Electronics: DAE4 Sn778; Calibrated: 2019/5/21
- Phantom: Twin-SAM V5.0 (30deg probe tilt); Type: QD 000 P40 CD; Serial: 1885
- Measurement SW: DASY52, Version 52.10 (2); SEMCAD X Version 14.6.12 (7450)

Area Scan (91x91x1): Interpolated grid: dx=1.200 mm, dy=1.200 mm
Maximum value of SAR (interpolated) = 1.25 W/kg

Zoom Scan (7x7x7)/Cube 0: Measurement grid: dx=5mm, dy=5mm, dz=5mm
Reference Value = 17.80 V/m; Power Drift = 0.08 dB
Peak SAR (extrapolated) = 3.23 W/kg
SAR(1 g) = 1.02 W/kg; SAR(10 g) = 0.365 W/kg
Maximum value of SAR (measured) = 1.48 W/kg



0 dB = 1.48 W/kg = 1.70 dBW/kg

#20_LTE Band 66_20M_QPSK_1_0_Bottom Side_5mm_Ch132322

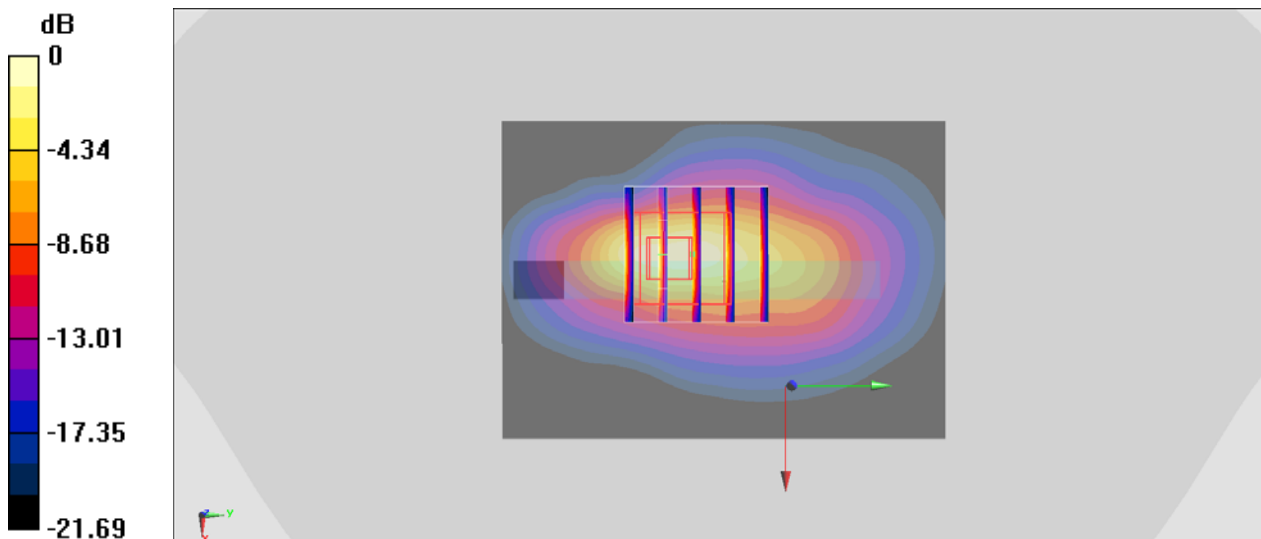
Communication System: LTE ; Frequency: 1745 MHz;Duty Cycle: 1:1
Medium: HSL_1750_200423 Medium parameters used : $f = 1745$ MHz; $\sigma = 1.365$ S/m; $\epsilon_r = 40.608$;
 $\rho = 1000$ kg/m³
Ambient Temperature : 23.4 °C ; Liquid Temperature : 22.4 °C

DASY5 Configuration

- Probe: ES3DV3 - SN3270;ConvF(5.41, 5.41, 5.41) @ 1745 MHz;Calibrated: 2019/9/25
- Sensor-Surface: 3mm (Mechanical Surface Detection)
- Electronics: DAE4 Sn778; Calibrated: 2019/5/21
- Phantom: Twin-SAM V5.0 (30deg probe tilt); Type: QD 000 P40 CD; Serial: 1885
- Measurement SW: DASY52, Version 52.10 (2); SEMCAD X Version 14.6.12 (7450)

Area Scan (51x71x1): Interpolated grid: dx=1.500 mm, dy=1.500 mm
Maximum value of SAR (interpolated) = 1.09 W/kg

Zoom Scan (5x5x7)/Cube 0: Measurement grid: dx=8mm, dy=8mm, dz=5mm
Reference Value = 26.74 V/m; Power Drift = 0.14 dB
Peak SAR (extrapolated) = 2.73 W/kg
SAR(1 g) = 0.944 W/kg; SAR(10 g) = 0.384 W/kg
Maximum value of SAR (measured) = 1.29 W/kg



0 dB = 1.29 W/kg = 1.11 dBW/kg

#21_WLAN2.4GHz_802.11b 1Mbps_Back_5mm_Ch6

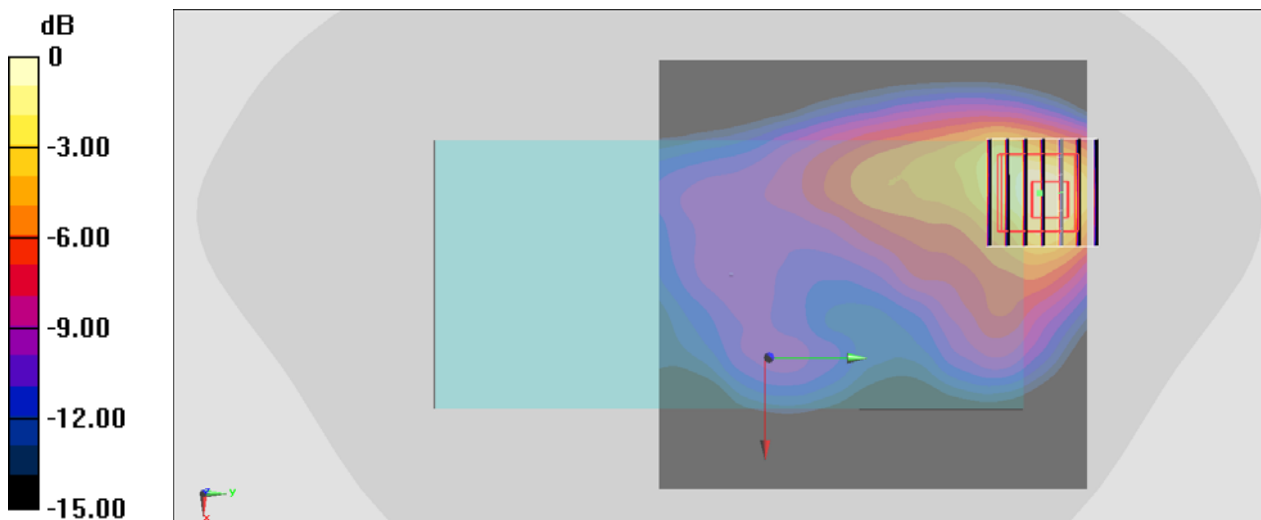
Communication System: 802.11b ; Frequency: 2437 MHz;Duty Cycle: 1:1
Medium: HSL_2450_200430 Medium parameters used : $f = 2437$ MHz; $\sigma = 1.815$ S/m; $\epsilon_r = 39.208$;
 $\rho = 1000$ kg/m³
Ambient Temperature : 23.4 °C ; Liquid Temperature : 22.4 °C

DASY5 Configuration

- Probe: ES3DV3 - SN3270;ConvF(4.57, 4.57, 4.57) @ 2437 MHz;Calibrated: 2019/9/25
- Sensor-Surface: 3mm (Mechanical Surface Detection)
- Electronics: DAE4 Sn778; Calibrated: 2019/5/21
- Phantom: Twin-SAM V5.0 (30deg probe tilt); Type: QD 000 P40 CD; Serial: 1885
- Measurement SW: DASY52, Version 52.10 (4); SEMCAD X Version 14.6.14 (7483)

Area Scan (101x101x1): Interpolated grid: dx=1.200 mm, dy=1.200 m
Maximum value of SAR (interpolated) = 1.15 W/kg

Zoom Scan (7x7x7)/Cube 0: Measurement grid: dx=5mm, dy=5mm, dz=5mm
Reference Value = 8.531 V/m; Power Drift = -0.02 dB
Peak SAR (extrapolated) = 2.26 W/kg
SAR(1 g) = 0.806 W/kg; SAR(10 g) = 0.344 W/kg
Maximum value of SAR (measured) = 1.08 W/kg



0 dB = 1.08 W/kg = 0.33 dBW/kg

#22_Bluetooth_1Mbps_Top Side_5mm_Ch39

Communication System: Bluetooth; Frequency: 2441 MHz; Duty Cycle: 1:1.301

Medium: HSL_2450_200425 Medium parameters used : $f = 2441$ MHz; $\sigma = 1.782$ S/m; $\epsilon_r = 39.033$; $\rho = 1000$ kg/m³

Ambient Temperature : 23.5 °C ; Liquid Temperature : 22.5 °C

DASY5 Configuration:

- Probe: EX3DV4 - SN7306; ConvF(7.48, 7.48, 7.48) @ 2441 MHz; Calibrated: 2019/7/22
- Sensor-Surface: 1.4mm (Mechanical Surface Detection)
- Electronics: DAE3 Sn577; Calibrated: 2019/9/17
- Phantom: SAM_Left; Type: QD000P40CD; Serial: TP:1801
- Measurement SW: DASY52, Version 52.10 (4); SEMCAD X Version 14.6.14 (7483)

Area Scan (61x91x1): Interpolated grid: dx=1.200 mm, dy=1.200 mm

Maximum value of SAR (interpolated) = 1.00 W/kg

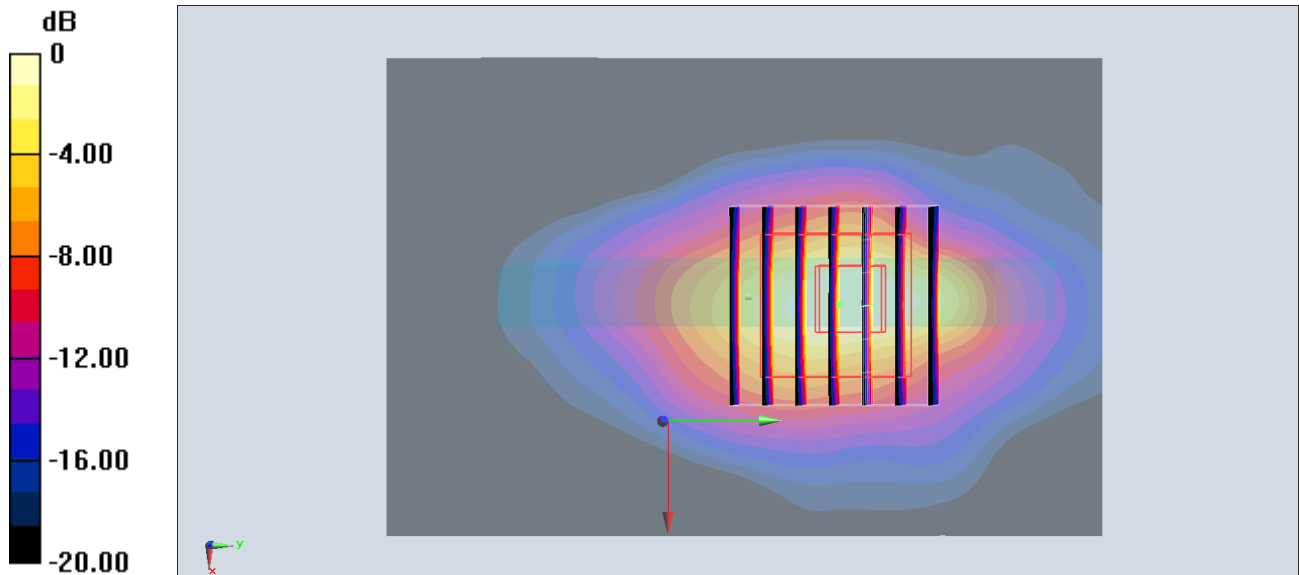
Zoom Scan (7x7x7)/Cube 0: Measurement grid: dx=5mm, dy=5mm, dz=5mm

Reference Value = 0.58 V/m; Power Drift = 0.01 dB

Peak SAR (extrapolated) = 1.26 W/kg

SAR(1 g) = 0.501 W/kg; SAR(10 g) = 0.204 W/kg

Maximum value of SAR (measured) = 0.924 W/kg



0 dB = 0.924 W/kg = -0.34 dBW/kg

#23_GSM850_GPRS (4 Tx slots)_Back_5mm_Ch128

Communication System: GSM850; Frequency: 824.2 MHz; Duty Cycle: 1:2.08

Medium: HSL_850_200425 Medium parameters used : $f = 824.2$ MHz; $\sigma = 0.88$ S/m; $\epsilon_r = 42.583$; $\rho = 1000$ kg/m³

Ambient Temperature : 23.5 °C ; Liquid Temperature : 22.5 °C

DASY5 Configuration

- Probe: ES3DV3 - SN3270; ConvF(6.43, 6.43, 6.43) @ 824.2 MHz; Calibrated: 2019/9/25
- Sensor-Surface: 3mm (Mechanical Surface Detection)
- Electronics: DAE4 Sn778; Calibrated: 2019/5/21
- Phantom: Twin-SAM V5.0 (30deg probe tilt); Type: QD 000 P40 CD; Serial: 1885
- Measurement SW: DASY52, Version 52.10 (2); SEMCAD X Version 14.6.12 (7450)

Area Scan (71x71x1): Interpolated grid: dx=1.500 mm, dy=1.500 mm

Maximum value of SAR (interpolated) = 0.378 W/kg

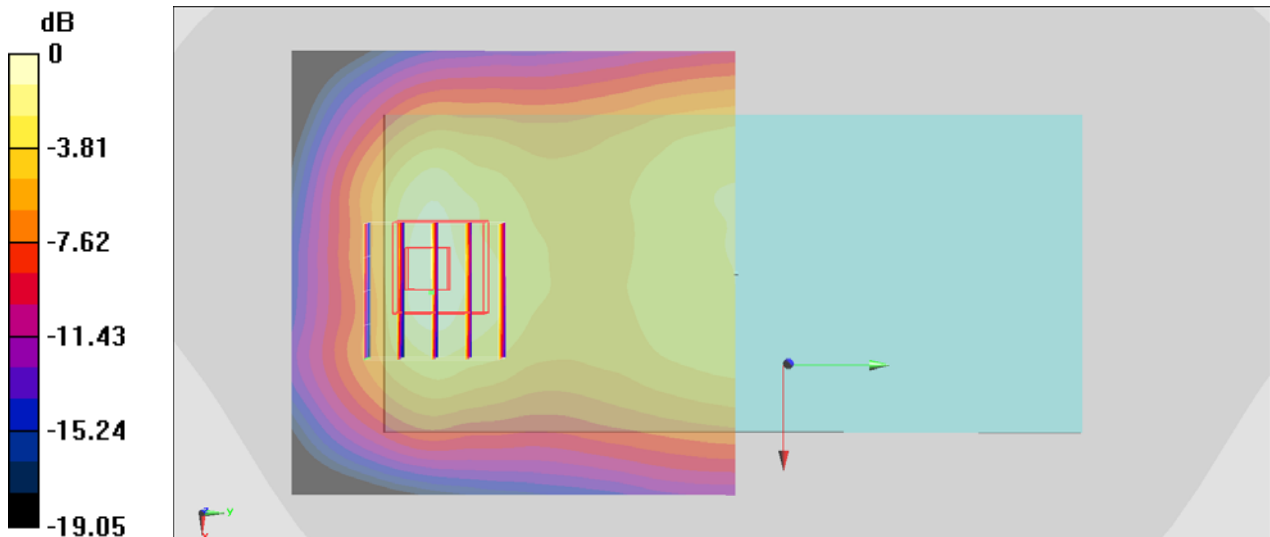
Zoom Scan (5x5x7)/Cube 0: Measurement grid: dx=8mm, dy=8mm, dz=5mm

Reference Value = 17.55 V/m; Power Drift = 0.03 dB

Peak SAR (extrapolated) = 0.720 W/kg

SAR(1 g) = 0.324 W/kg; SAR(10 g) = 0.172 W/kg

Maximum value of SAR (measured) = 0.392 W/kg



0 dB = 0.392 W/kg = -4.07 dBW/kg

#24_GSM1900_GPRS (4 Tx slots)_Back_5mm_Ch661

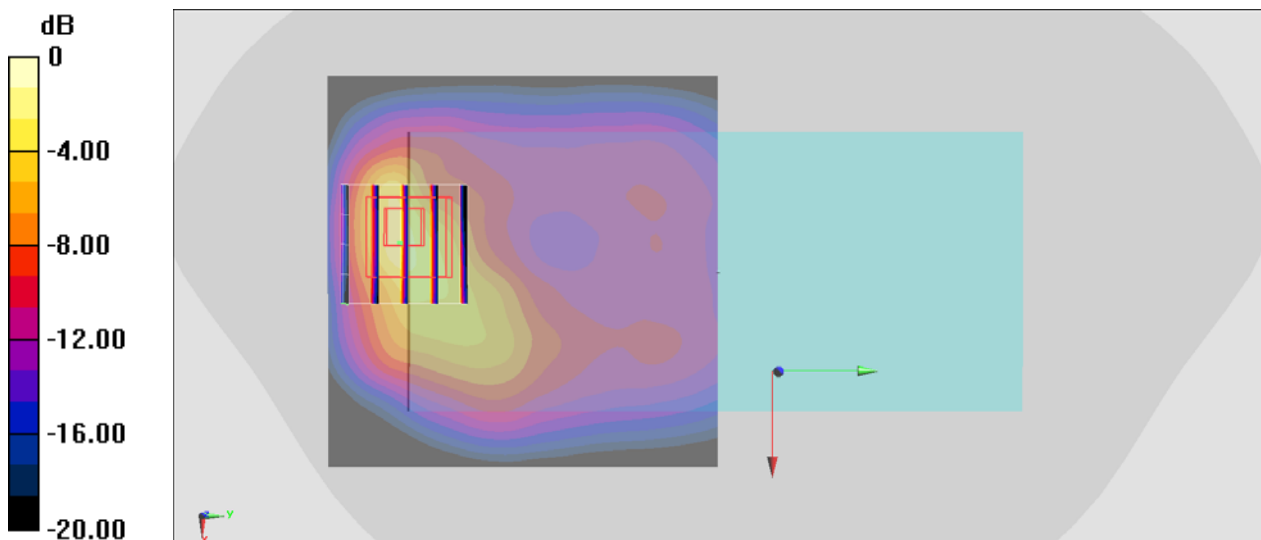
Communication System: PCS; Frequency: 1880 MHz; Duty Cycle: 1:2.08
Medium: HSL_1900_200423 Medium parameters used: $f = 1880$ MHz; $\sigma = 1.397$ S/m; $\epsilon_r = 39.278$;
 $\rho = 1000$ kg/m³
Ambient Temperature : 23.4 °C ; Liquid Temperature : 22.4 °C

DASY5 Configuration

- Probe: ES3DV3 - SN3270; ConvF(5.2, 5.2, 5.2) @ 1880 MHz; Calibrated: 2019/9/25
- Sensor-Surface: 3mm (Mechanical Surface Detection)
- Electronics: DAE4 Sn778; Calibrated: 2019/5/21
- Phantom: Twin-SAM V5.0 (30deg probe tilt); Type: QD 000 P40 CD; Serial: 1885
- Measurement SW: DASY52, Version 52.10 (2); SEMCAD X Version 14.6.12 (7450)

Area Scan (71x71x1): Interpolated grid: dx=1.500 mm, dy=1.500 mm
Maximum value of SAR (interpolated) = 0.853 W/kg

Zoom Scan (5x5x7)/Cube 0: Measurement grid: dx=8mm, dy=8mm, dz=5mm
Reference Value = 18.44 V/m; Power Drift = 0.02 dB
Peak SAR (extrapolated) = 2.32 W/kg
SAR(1 g) = 0.896 W/kg; SAR(10 g) = 0.366 W/kg
Maximum value of SAR (measured) = 1.25 W/kg



0 dB = 1.25 W/kg = 0.97 dBW/kg

#25_WCDMA II_RMC 12.2Kbps_Back_5mm_Ch9262

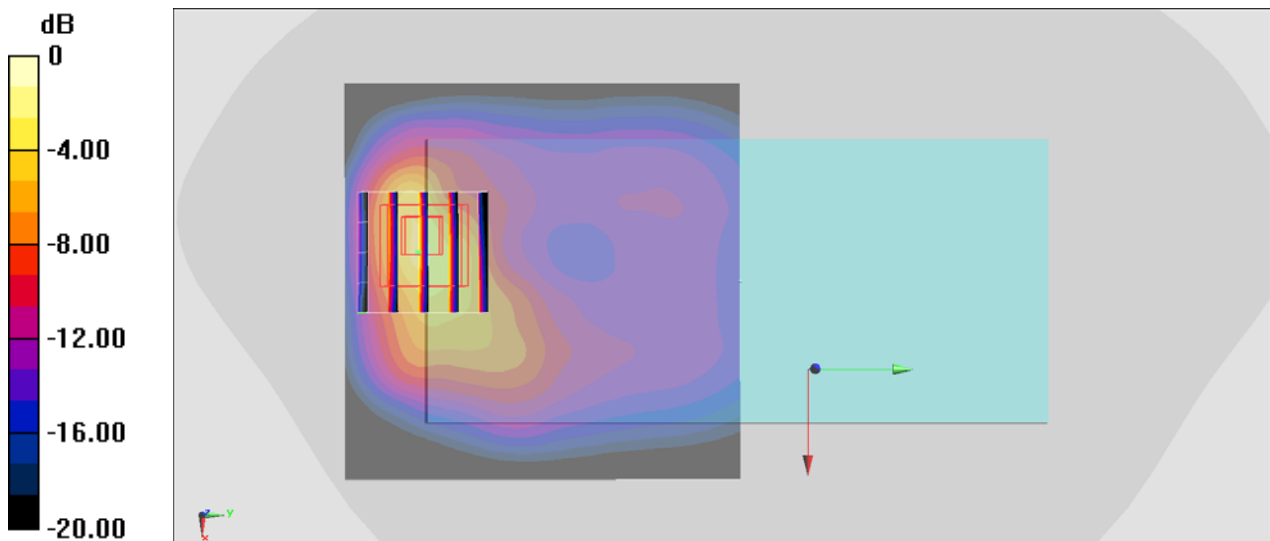
Communication System: WCDMA; Frequency: 1852.4 MHz; Duty Cycle: 1:1
 Medium: HSL_1900_200423 Medium parameters used (interpolated): $f = 1852.4$ MHz; $\sigma = 1.374$ S/m; $\epsilon_r = 39.363$; $\rho = 1000$ kg/m³
 Ambient Temperature : 23.4 °C ; Liquid Temperature : 22.4 °C

DASY5 Configuration

- Probe: ES3DV3 - SN3270; ConvF(5.2, 5.2, 5.2) @ 1852.4 MHz; Calibrated: 2019/9/25
- Sensor-Surface: 3mm (Mechanical Surface Detection)
- Electronics: DAE4 Sn778; Calibrated: 2019/5/21
- Phantom: Twin-SAM V5.0 (30deg probe tilt); Type: QD 000 P40 CD; Serial: 1885
- Measurement SW: DASY52, Version 52.10 (2); SEMCAD X Version 14.6.12 (7450)

Area Scan (71x71x1): Interpolated grid: dx=1.500 mm, dy=1.500 mm
 Maximum value of SAR (interpolated) = 0.837 W/kg

Zoom Scan (5x5x7)/Cube 0: Measurement grid: dx=8mm, dy=8mm, dz=5mm
 Reference Value = 17.10 V/m; Power Drift = 0.15 dB
 Peak SAR (extrapolated) = 2.52 W/kg
SAR(1 g) = 0.964 W/kg; SAR(10 g) = 0.388 W/kg
 Maximum value of SAR (measured) = 1.39 W/kg



0 dB = 1.39 W/kg = 1.43 dBW/kg

#26_WCDMA_IV_RMC_12.2Kbps_Back_5mm_Ch1413

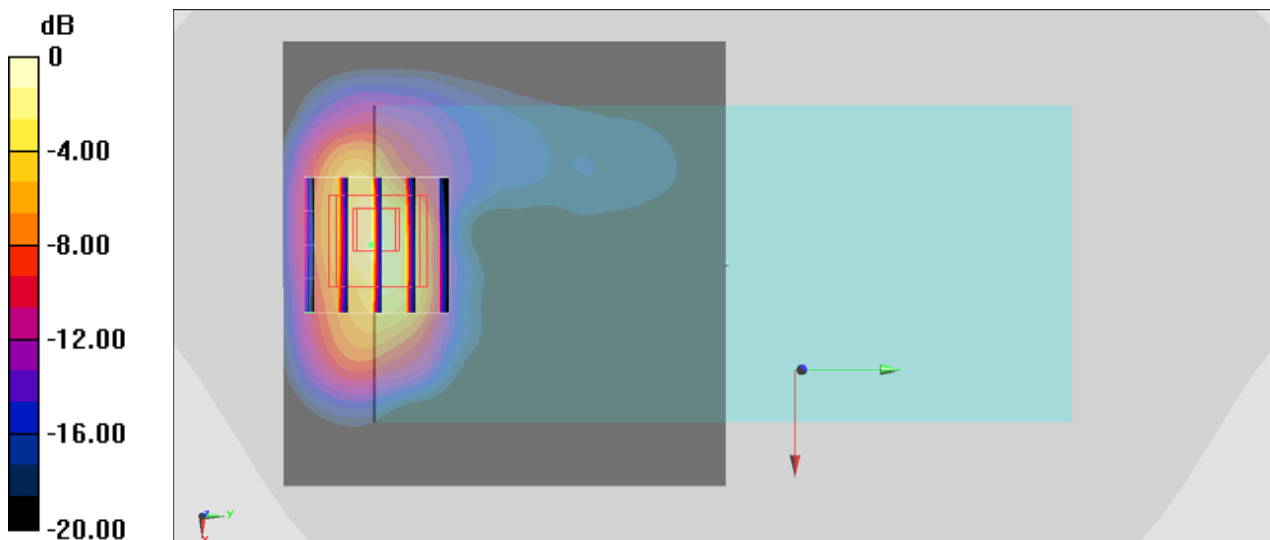
Communication System: WCDMA; Frequency: 1732.6 MHz; Duty Cycle: 1:1
 Medium: HSL_1750_200423 Medium parameters used: $f = 1733 \text{ MHz}$; $\sigma = 1.354 \text{ S/m}$; $\epsilon_r = 40.635$;
 $\rho = 1000 \text{ kg/m}^3$
 Ambient Temperature : $23.4 \text{ }^\circ\text{C}$; Liquid Temperature : $22.4 \text{ }^\circ\text{C}$

DASY5 Configuration

- Probe: ES3DV3 - SN3270; ConvF(5.41, 5.41, 5.41) @ 1732.6 MHz; Calibrated: 2019/9/25
- Sensor-Surface: 3mm (Mechanical Surface Detection)
- Electronics: DAE4 Sn778; Calibrated: 2019/5/21
- Phantom: Twin-SAM V5.0 (30deg probe tilt); Type: QD 000 P40 CD; Serial: 1885
- Measurement SW: DASY52, Version 52.10 (2); SEMCAD X Version 14.6.12 (7450)

Area Scan (71x71x1): Interpolated grid: $dx=1.500 \text{ mm}$, $dy=1.500 \text{ mm}$
 Maximum value of SAR (interpolated) = 0.881 W/kg

Zoom Scan (5x5x7)/Cube 0: Measurement grid: $dx=8\text{mm}$, $dy=8\text{mm}$, $dz=5\text{mm}$
 Reference Value = 15.64 V/m ; Power Drift = -0.09 dB
 Peak SAR (extrapolated) = 2.18 W/kg
SAR(1 g) = 0.860 W/kg ; SAR(10 g) = 0.356 W/kg
 Maximum value of SAR (measured) = 1.14 W/kg



0 dB = 1.14 W/kg = 0.57 dBW/kg

#27_WCDMA V_RMC 12.2Kbps_Back_5mm_Ch4233

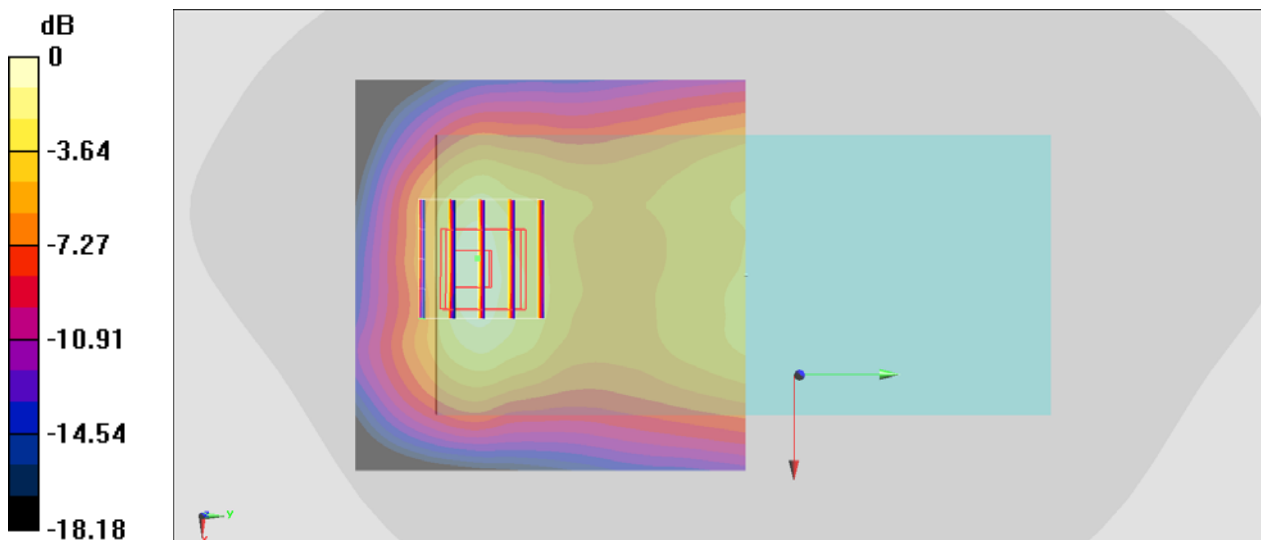
Communication System: WCDMA; Frequency: 846.6 MHz; Duty Cycle: 1:1
Medium: HSL_850_200425 Medium parameters used: $f = 847$ MHz; $\sigma = 0.901$ S/m; $\epsilon_r = 42.254$; $\rho = 1000$ kg/m³
Ambient Temperature : 23.5 °C; Liquid Temperature : 22.5 °C

DASY5 Configuration

- Probe: ES3DV3 - SN3270; ConvF(6.43, 6.43, 6.43) @ 846.6 MHz; Calibrated: 2019/9/25
- Sensor-Surface: 3mm (Mechanical Surface Detection)
- Electronics: DAE4 Sn778; Calibrated: 2019/5/21
- Phantom: Twin-SAM V5.0 (30deg probe tilt); Type: QD 000 P40 CD; Serial: 1885
- Measurement SW: DASY52, Version 52.10 (2); SEMCAD X Version 14.6.12 (7450)

Area Scan (71x71x1): Interpolated grid: dx=1.500 mm, dy=1.500 mm
Maximum value of SAR (interpolated) = 0.326 W/kg

Zoom Scan (5x5x7)/Cube 0: Measurement grid: dx=8mm, dy=8mm, dz=5mm
Reference Value = 17.80 V/m; Power Drift = 0.15 dB
Peak SAR (extrapolated) = 0.612 W/kg
SAR(1 g) = 0.288 W/kg; SAR(10 g) = 0.154 W/kg
Maximum value of SAR (measured) = 0.341 W/kg



0 dB = 0.341 W/kg = -4.67 dBW/kg

#28_LTE Band 2_20M_QPSK_1_0_Back_5mm_Ch18700

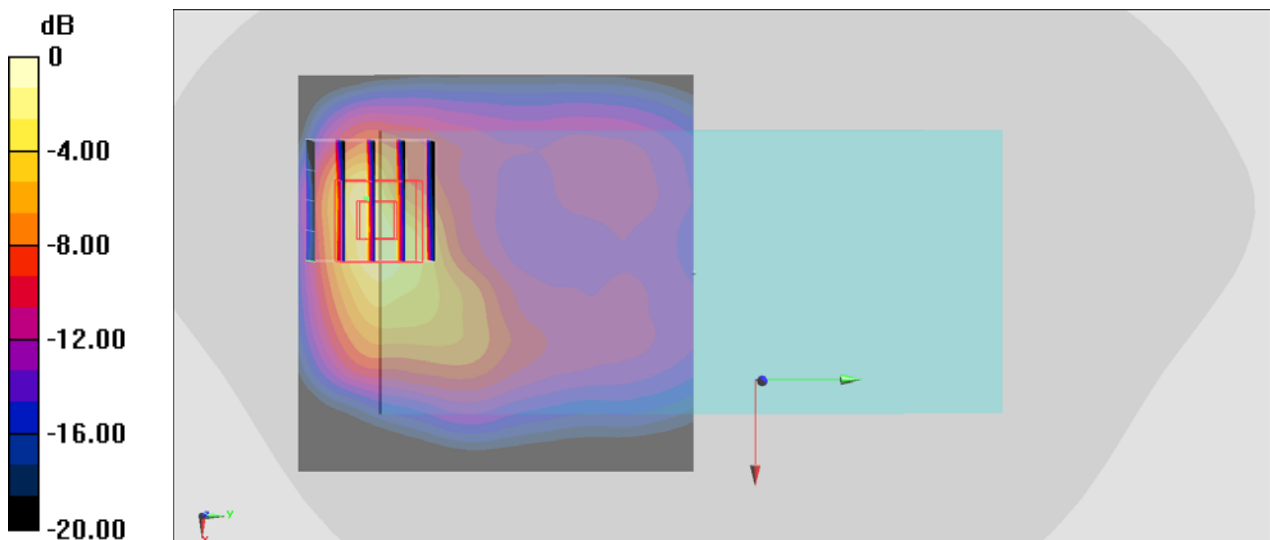
Communication System: LTE ; Frequency: 1860 MHz;Duty Cycle: 1:1
Medium: HSL_1900_200423 Medium parameters used: $f = 1860$ MHz; $\sigma = 1.381$ S/m; $\epsilon_r = 39.343$;
 $\rho = 1000$ kg/m³
Ambient Temperature : 23.4 °C ; Liquid Temperature : 22.4 °C

DASY5 Configuration

- Probe: ES3DV3 - SN3270;ConvF(5.2, 5.2, 5.2) @ 1860 MHz;Calibrated: 2019/9/25
- Sensor-Surface: 3mm (Mechanical Surface Detection)
- Electronics: DAE4 Sn778; Calibrated: 2019/5/21
- Phantom: Twin-SAM V5.0 (30deg probe tilt); Type: QD 000 P40 CD; Serial: 1885
- Measurement SW: DASY52, Version 52.10 (2); SEMCAD X Version 14.6.12 (7450)

Area Scan (71x71x1): Interpolated grid: dx=1.500 mm, dy=1.500 mm
Maximum value of SAR (interpolated) = 0.927 W/kg

Zoom Scan (5x5x7)/Cube 0: Measurement grid: dx=8mm, dy=8mm, dz=5mm
Reference Value = 18.35 V/m; Power Drift = -0.05 dB
Peak SAR (extrapolated) = 2.79 W/kg
SAR(1 g) = 1.01 W/kg; SAR(10 g) = 0.405 W/kg
Maximum value of SAR (measured) = 1.29 W/kg



0 dB = 1.29 W/kg = 1.11 dBW/kg

#29_LTE Band 5_10M_QPSK_1_0_Back_5mm_Ch20525

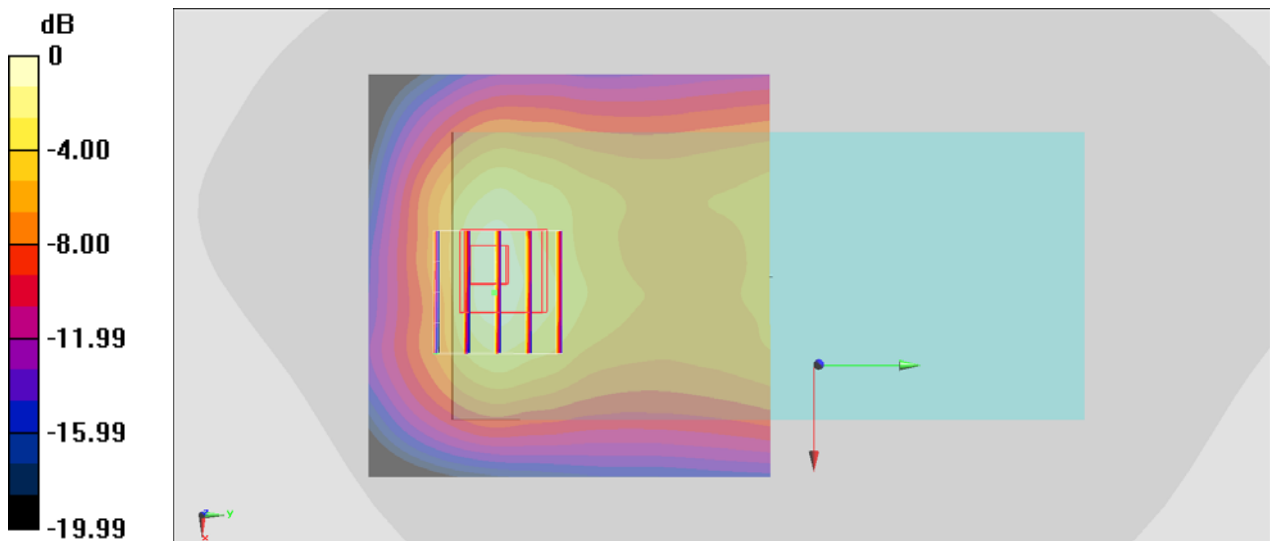
Communication System: LTE; Frequency: 836.5 MHz; Duty Cycle: 1:1
Medium: HSL_850_200425 Medium parameters used : $f = 836.5$ MHz; $\sigma = 0.891$ S/m; $\epsilon_r = 42.409$;
 $\rho = 1000$ kg/m³
Ambient Temperature : 23.5 °C ; Liquid Temperature : 22.5 °C

DASY5 Configuration

- Probe: ES3DV3 - SN3270; ConvF(6.43, 6.43, 6.43) @ 836.5 MHz; Calibrated: 2019/9/25
- Sensor-Surface: 3mm (Mechanical Surface Detection)
- Electronics: DAE4 Sn778; Calibrated: 2019/5/21
- Phantom: Twin-SAM V5.0 (30deg probe tilt); Type: QD 000 P40 CD; Serial: 1885
- Measurement SW: DASY52, Version 52.10 (2); SEMCAD X Version 14.6.12 (7450)

Area Scan (71x71x1): Interpolated grid: dx=1.500 mm, dy=1.500 mm
Maximum value of SAR (interpolated) = 0.360 W/kg

Zoom Scan (5x5x7)/Cube 0: Measurement grid: dx=8mm, dy=8mm, dz=5mm
Reference Value = 17.88 V/m; Power Drift = 0.03 dB
Peak SAR (extrapolated) = 0.671 W/kg
SAR(1 g) = 0.323 W/kg; SAR(10 g) = 0.174 W/kg
Maximum value of SAR (measured) = 0.387 W/kg



0 dB = 0.387 W/kg = -4.12 dBW/kg

#30_LTE Band 7_20M_QPSK_1_0_Back_5mm_Ch21350

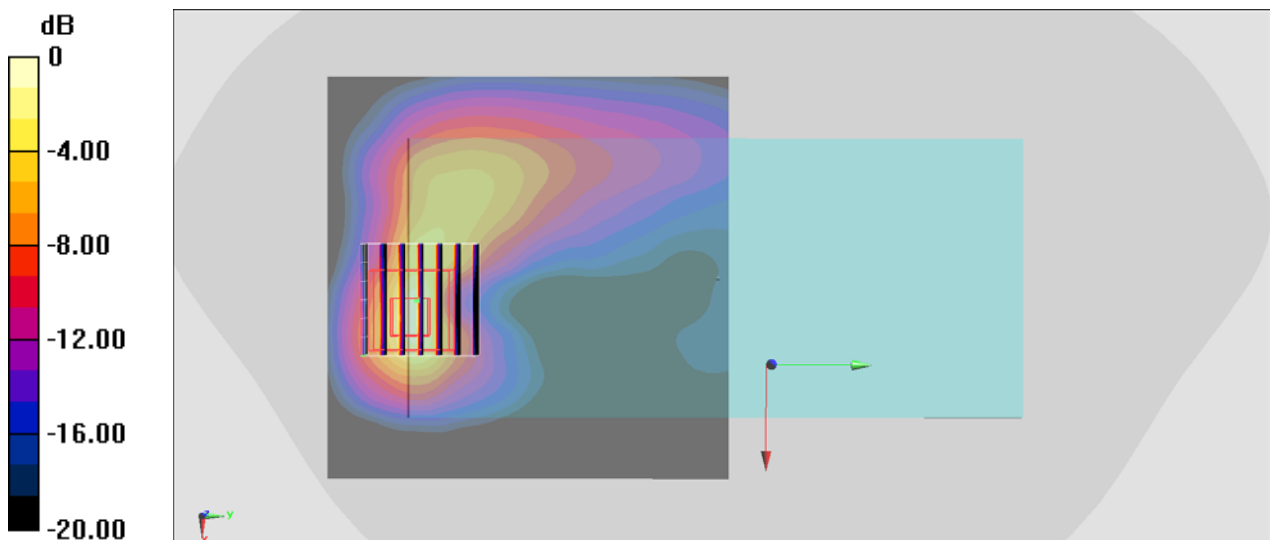
Communication System: LTE ; Frequency: 2560 MHz;Duty Cycle: 1:1
 Medium: HSL_2600_200424 Medium parameters used: $f = 2560$ MHz; $\sigma = 1.906$ S/m; $\epsilon_r = 40.595$;
 $\rho = 1000$ kg/m³
 Ambient Temperature : 23.4 °C ; Liquid Temperature : 22.4 °C

DASY5 Configuration

- Probe: ES3DV3 - SN3270;ConvF(4.51, 4.51, 4.51) @ 2560 MHz;Calibrated: 2019/9/25
- Sensor-Surface: 3mm (Mechanical Surface Detection)
- Electronics: DAE4 Sn778; Calibrated: 2019/5/21
- Phantom: Twin-SAM V5.0 (30deg probe tilt); Type: QD 000 P40 CD; Serial: 1885
- Measurement SW: DASY52, Version 52.10 (2); SEMCAD X Version 14.6.12 (7450)

Area Scan (91x91x1): Interpolated grid: dx=1.200 mm, dy=1.200 mm
 Maximum value of SAR (interpolated) = 1.25 W/kg

Zoom Scan (7x7x7)/Cube 0: Measurement grid: dx=5mm, dy=5mm, dz=5mm
 Reference Value = 17.80 V/m; Power Drift = 0.08 dB
 Peak SAR (extrapolated) = 3.23 W/kg
SAR(1 g) = 1.02 W/kg; SAR(10 g) = 0.365 W/kg
 Maximum value of SAR (measured) = 1.48 W/kg



0 dB = 1.48 W/kg = 1.70 dBW/kg

#31_LTE Band 66_20M_QPSK_1_0_Back_5mm_Ch132322

Communication System: LTE ; Frequency: 1745 MHz;Duty Cycle: 1:1

Medium: HSL_1750_200423 Medium parameters used : $f = 1745$ MHz; $\sigma = 1.365$ S/m; $\epsilon_r = 40.608$;
 $\rho = 1000$ kg/m³

Ambient Temperature : 23.4 °C ; Liquid Temperature : 22.4 °C

DASY5 Configuration

- Probe: ES3DV3 - SN3270;ConvF(5.41, 5.41, 5.41) @ 1745 MHz;Calibrated: 2019/9/25
- Sensor-Surface: 3mm (Mechanical Surface Detection)
- Electronics: DAE4 Sn778; Calibrated: 2019/5/21
- Phantom: Twin-SAM V5.0 (30deg probe tilt); Type: QD 000 P40 CD; Serial: 1885
- Measurement SW: DASY52, Version 52.10 (2); SEMCAD X Version 14.6.12 (7450)

Area Scan (71x71x1): Interpolated grid: dx=1.500 mm, dy=1.500 mm

Maximum value of SAR (interpolated) = 0.941 W/kg

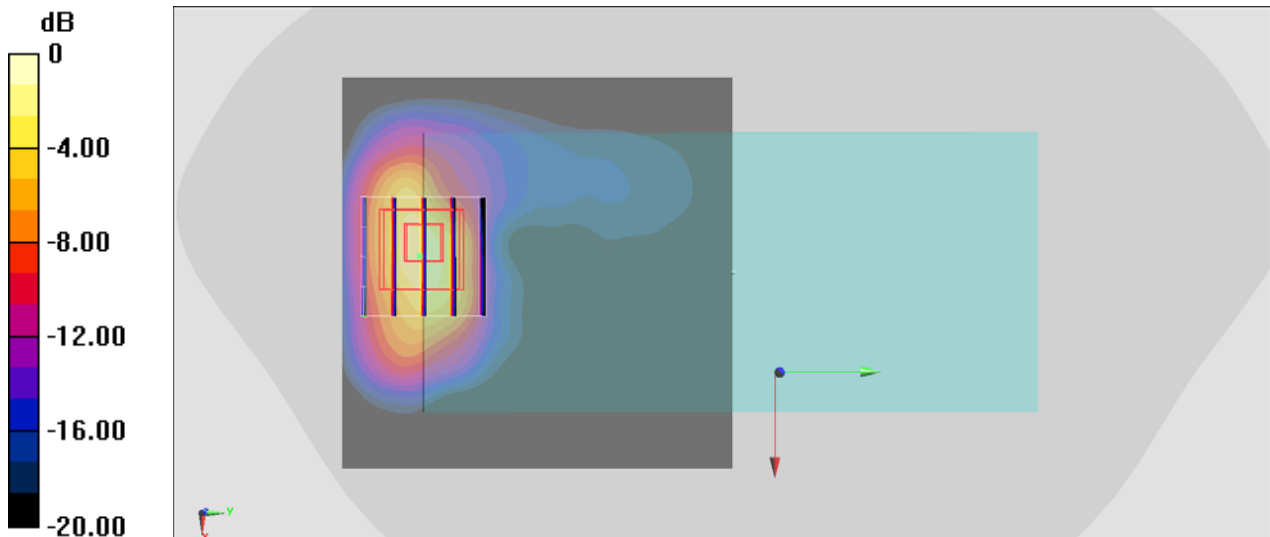
Zoom Scan (5x5x7)/Cube 0: Measurement grid: dx=8mm, dy=8mm, dz=5mm

Reference Value = 15.90 V/m; Power Drift = -0.04 dB

Peak SAR (extrapolated) = 2.34 W/kg

SAR(1 g) = 0.926 W/kg; SAR(10 g) = 0.392 W/kg

Maximum value of SAR (measured) = 1.28 W/kg



0 dB = 1.28 W/kg = 1.07 dBW/kg

#32_WLAN2.4GHz_802.11b 1Mbps_Back_5mm_Ch6

Communication System: 802.11b ; Frequency: 2437 MHz;Duty Cycle: 1:1
Medium: HSL_2450_200430 Medium parameters used : $f = 2437$ MHz; $\sigma = 1.815$ S/m; $\epsilon_r = 39.208$;
 $\rho = 1000$ kg/m³
Ambient Temperature : 23.4 °C ; Liquid Temperature : 22.4 °C

DASY5 Configuration

- Probe: ES3DV3 - SN3270;ConvF(4.57, 4.57, 4.57) @ 2437 MHz;Calibrated: 2019/9/25
- Sensor-Surface: 3mm (Mechanical Surface Detection)
- Electronics: DAE4 Sn778; Calibrated: 2019/5/21
- Phantom: Twin-SAM V5.0 (30deg probe tilt); Type: QD 000 P40 CD; Serial: 1885
- Measurement SW: DASY52, Version 52.10 (4); SEMCAD X Version 14.6.14 (7483)

Area Scan (101x101x1): Interpolated grid: dx=1.200 mm, dy=1.200 m
Maximum value of SAR (interpolated) = 1.15 W/kg

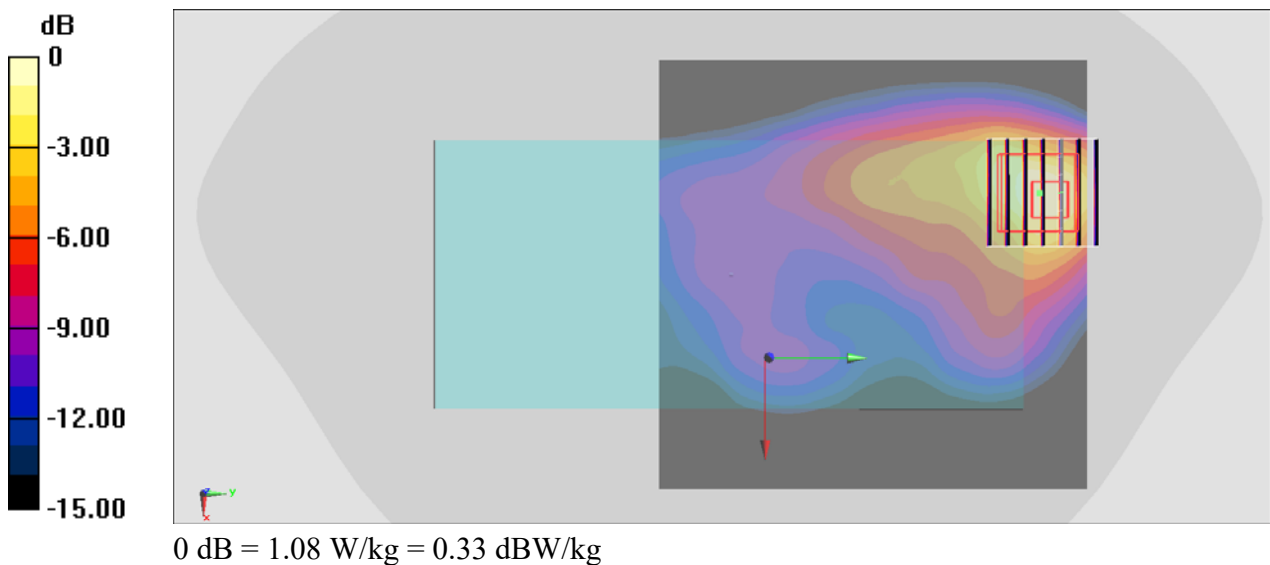
Configuration/Ch/Zoom Scan (7x7x7)/Cube 0: Measurement grid: dx=5mm, dy=5mm, dz=5mm

Reference Value = 8.531 V/m; Power Drift = -0.02 dB

Peak SAR (extrapolated) = 2.26 W/kg

SAR(1 g) = 0.806 W/kg; SAR(10 g) = 0.344 W/kg

Maximum value of SAR (measured) = 1.08 W/kg



#33_Bluetooth_1Mbps_Back_5mm_Ch39

Communication System: Bluetooth; Frequency: 2441 MHz; Duty Cycle: 1:1.301

Medium: HSL_2450_200425 Medium parameters used : $f = 2441$ MHz; $\sigma = 1.782$ S/m; $\epsilon_r = 39.033$; $\rho = 1000$ kg/m³

Ambient Temperature : 23.5 °C ; Liquid Temperature : 22.5 °C

DASY5 Configuration:

- Probe: EX3DV4 - SN7306; ConvF(7.48, 7.48, 7.48) @ 2441 MHz; Calibrated: 2019/7/22
- Sensor-Surface: 1.4mm (Mechanical Surface Detection)
- Electronics: DAE3 Sn577; Calibrated: 2019/9/17
- Phantom: SAM_Left; Type: QD000P40CD; Serial: TP:1801
- Measurement SW: DASY52, Version 52.10 (4); SEMCAD X Version 14.6.14 (7483)

Area Scan (101x91x1): Interpolated grid: dx=1.200 mm, dy=1.200 mm

Maximum value of SAR (interpolated) = 0.609 W/kg

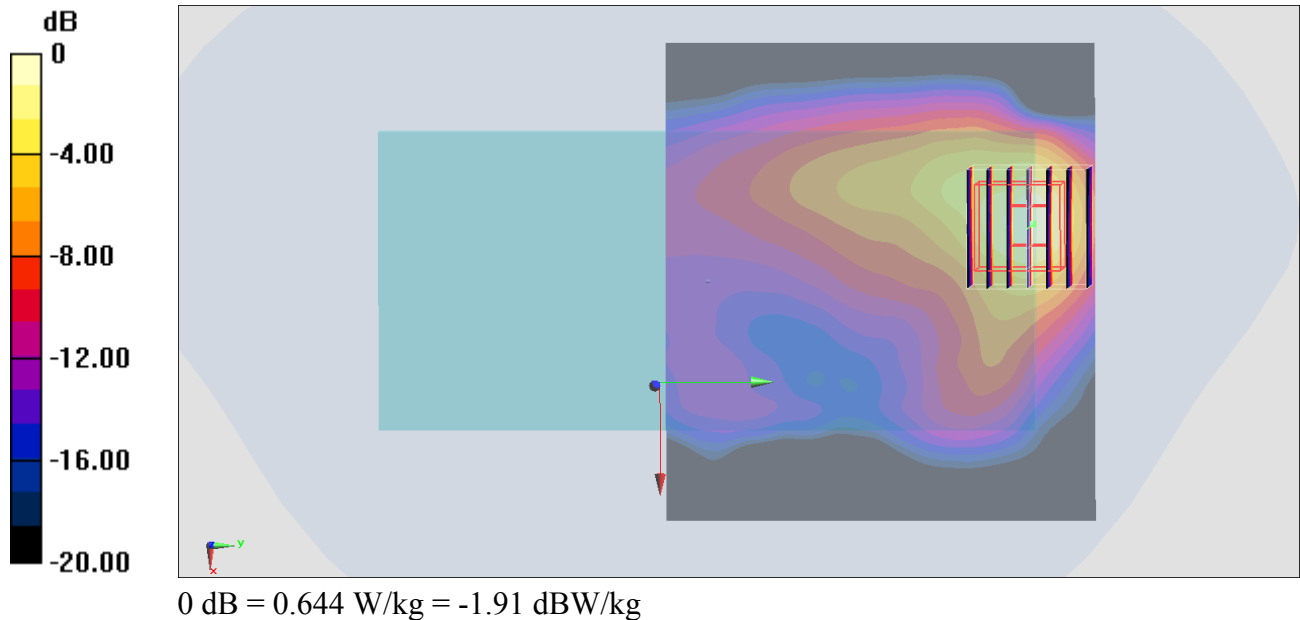
Zoom Scan (7x7x7)/Cube 0: Measurement grid: dx=5mm, dy=5mm, dz=5mm

Reference Value = 4.683 V/m; Power Drift = 0.01 dB

Peak SAR (extrapolated) = 0.857 W/kg

SAR(1 g) = 0.336 W/kg; SAR(10 g) = 0.144 W/kg

Maximum value of SAR (measured) = 0.644 W/kg



#34_GSM1900_GPRS (4 Tx slots)_Bottom Side_0mm_Ch661

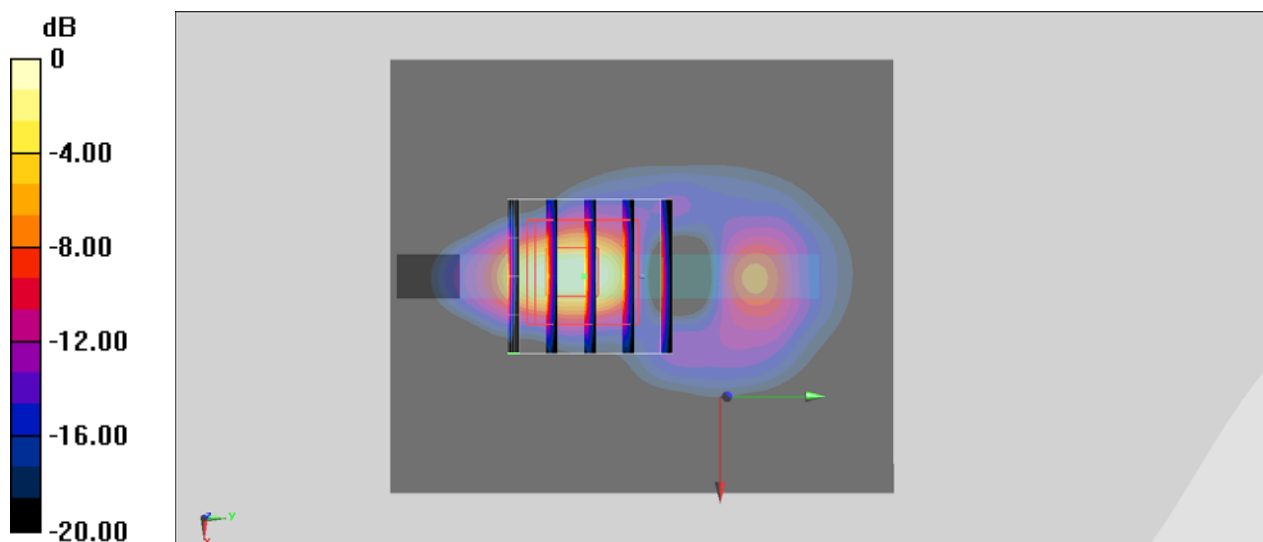
Communication System: PCS; Frequency: 1880 MHz; Duty Cycle: 1:2.08
 Medium: HSL_1900_200423 Medium parameters used: $f = 1880$ MHz; $\sigma = 1.397$ S/m; $\epsilon_r = 39.278$;
 $\rho = 1000$ kg/m³
 Ambient Temperature : 23.4 °C ; Liquid Temperature : 22.4 °C

DASY5 Configuration

- Probe: ES3DV3 - SN3270; ConvF(5.2, 5.2, 5.2) @ 1880 MHz; Calibrated: 2019/9/25
- Sensor-Surface: 3mm (Mechanical Surface Detection)
- Electronics: DAE4 Sn778; Calibrated: 2019/5/21
- Phantom: Twin-SAM V5.0 (30deg probe tilt); Type: QD 000 P40 CD; Serial: 1885
- Measurement SW: DASY52, Version 52.10 (2); SEMCAD X Version 14.6.12 (7450)

Area Scan (61x71x1): Interpolated grid: dx=1.500 mm, dy=1.500 mm
 Maximum value of SAR (interpolated) = 7.18 W/kg

Zoom Scan (5x5x7)/Cube 0: Measurement grid: dx=8mm, dy=8mm, dz=5mm
 Reference Value = 71.93 V/m; Power Drift = 0.18 dB
 Peak SAR (extrapolated) = 13.7 W/kg
SAR(1 g) = 4.43 W/kg; SAR(10 g) = 1.53 W/kg
 Maximum value of SAR (measured) = 6.79 W/kg



0 dB = 6.79 W/kg = 8.32 dBW/kg

#35_WCDMA II_RMC 12.2Kbps_Bottom Side_0mm_Ch9262

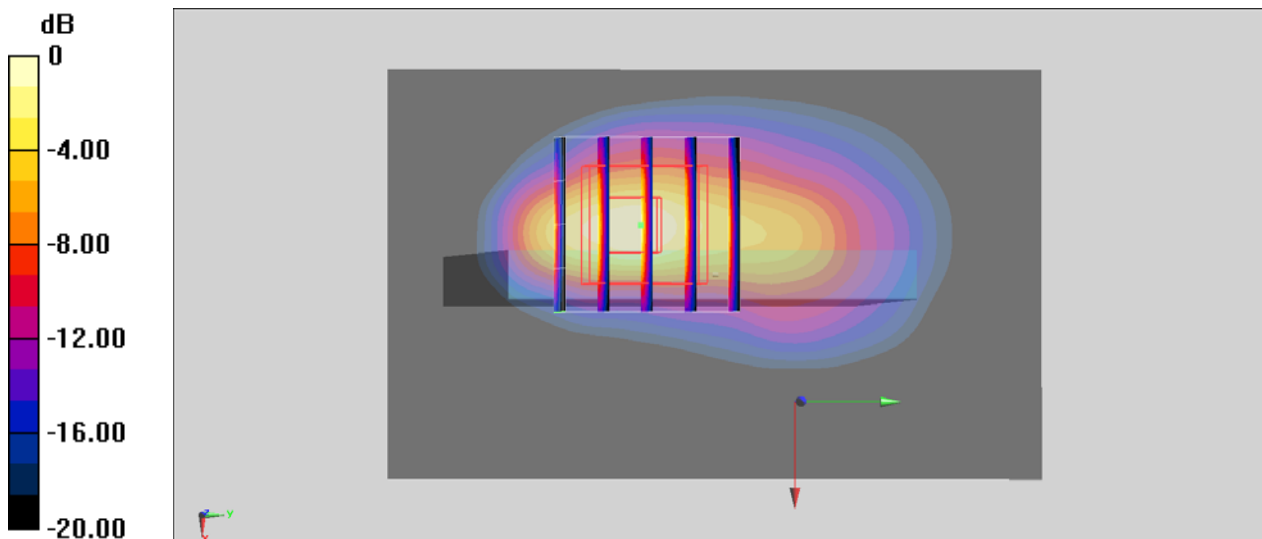
Communication System: WCDMA; Frequency: 1852.4 MHz; Duty Cycle: 1:1
Medium: HSL_1900_200423 Medium parameters used : $f = 1852.4$ MHz; $\sigma = 1.374$ S/m; $\epsilon_r = 39.363$; $\rho = 1000$ kg/m³
Ambient Temperature : 23.4 °C ; Liquid Temperature : 22.4 °C

DASY5 Configuration

- Probe: ES3DV3 - SN3270; ConvF(5.2, 5.2, 5.2) @ 1852.4 MHz; Calibrated: 2019/9/25
- Sensor-Surface: 3mm (Mechanical Surface Detection)
- Electronics: DAE4 Sn778; Calibrated: 2019/5/21
- Phantom: Twin-SAM V5.0 (30deg probe tilt); Type: QD 000 P40 CD; Serial: 1885
- Measurement SW: DASY52, Version 52.10 (2); SEMCAD X Version 14.6.12 (7450)

Area Scan (51x81x1): Interpolated grid: dx=1.500 mm, dy=1.500 mm
Maximum value of SAR (interpolated) = 9.82 W/kg

Zoom Scan (5x5x7)/Cube 0: Measurement grid: dx=8mm, dy=8mm, dz=5mm
Reference Value = 37.42 V/m; Power Drift = 0.18 dB
Peak SAR (extrapolated) = 14.6 W/kg
SAR(1 g) = 6.31 W/kg; SAR(10 g) = 2.48 W/kg
Maximum value of SAR (measured) = 9.44 W/kg



0 dB = 9.44 W/kg = 9.75 dBW/kg

#36_WCDMA IV_RMC 12.2Kbps_Bottom Side_0mm_Ch1513

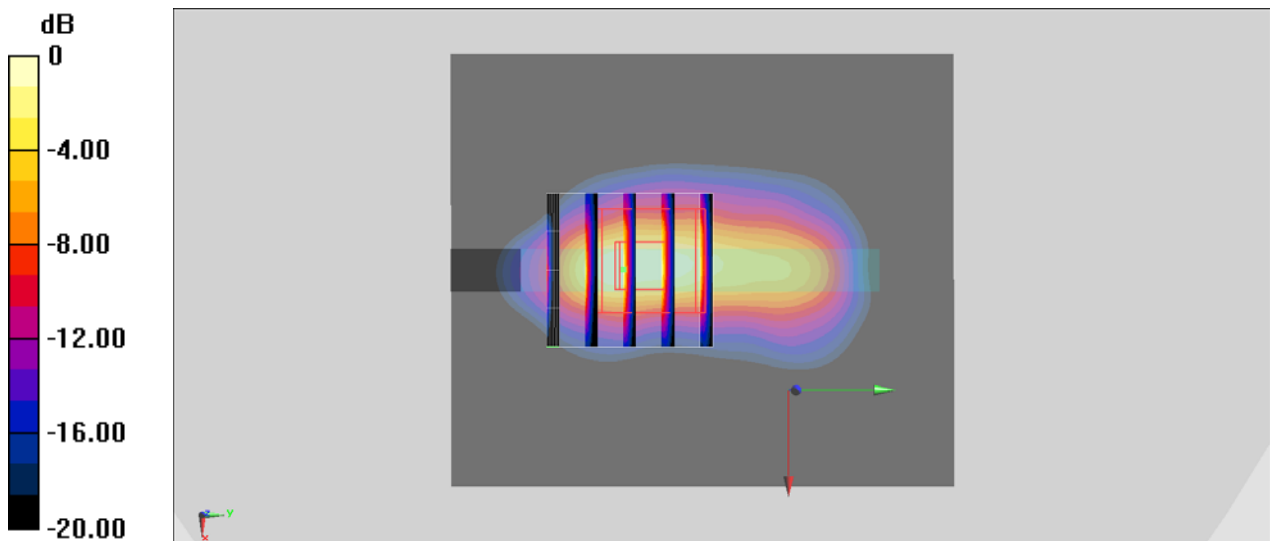
Communication System: UID 0, WCDMA; Frequency: 1752.6 MHz; Duty Cycle: 1:1
Medium: HSL_1750_200423 Medium parameters used: $f = 1753 \text{ MHz}$; $\sigma = 1.372 \text{ S/m}$; $\epsilon_r = 40.596$;
 $\rho = 1000 \text{ kg/m}^3$
Ambient Temperature : $23.4 \text{ }^\circ\text{C}$; Liquid Temperature : $22.4 \text{ }^\circ\text{C}$

DASY5 Configuration

- Probe: ES3DV3 - SN3270; ConvF(5.41, 5.41, 5.41) @ 1752.6 MHz; Calibrated: 2019/9/25
- Sensor-Surface: 3mm (Mechanical Surface Detection)
- Electronics: DAE4 Sn778; Calibrated: 2019/5/21
- Phantom: Twin-SAM V5.0 (30deg probe tilt); Type: QD 000 P40 CD; Serial: 1885
- Measurement SW: DASY52, Version 52.10 (2); SEMCAD X Version 14.6.12 (7450)

Area Scan (61x71x1): Interpolated grid: $dx=1.500 \text{ mm}$, $dy=1.500 \text{ mm}$
Maximum value of SAR (interpolated) = 8.44 W/kg

Zoom Scan (5x5x7)/Cube 0: Measurement grid: $dx=8\text{mm}$, $dy=8\text{mm}$, $dz=5\text{mm}$
Reference Value = 81.00 V/m ; Power Drift = 0.10 dB
Peak SAR (extrapolated) = 17.9 W/kg
SAR(1 g) = 5.66 W/kg ; SAR(10 g) = 2.06 W/kg
Maximum value of SAR (measured) = 8.34 W/kg



0 dB = $8.34 \text{ W/kg} = 9.21 \text{ dBW/kg}$

#37_LTE Band 2_20M_QPSK_1_0_Bottom Side_0mm_Ch18700

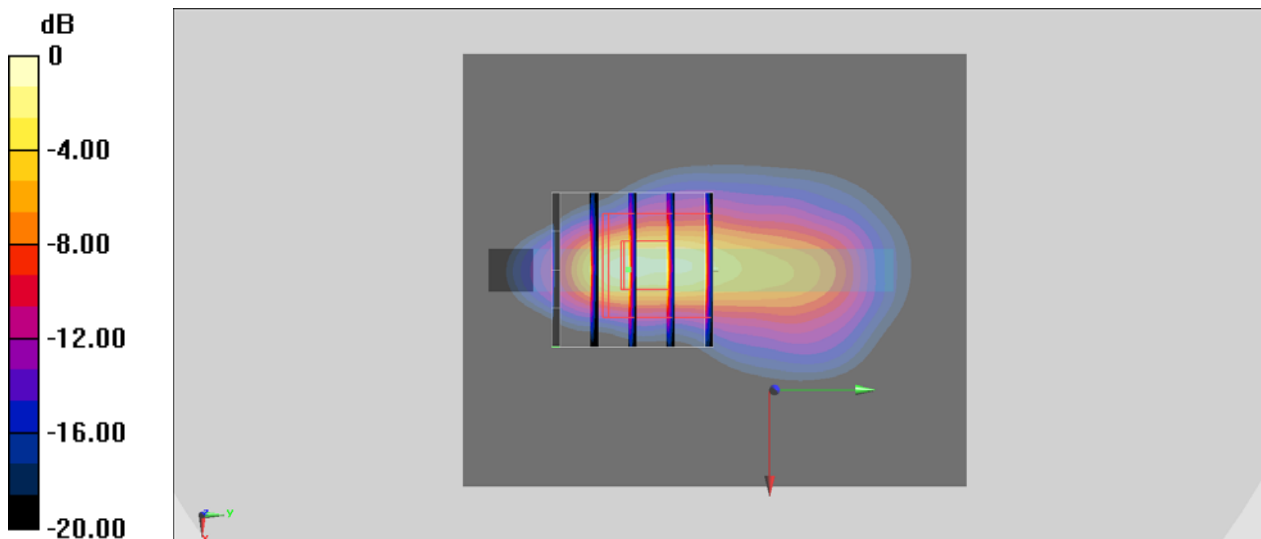
Communication System: LTE; Frequency: 1860 MHz; Duty Cycle: 1:1
Medium: HSL_1900_200423 Medium parameters used: $f = 1860$ MHz; $\sigma = 1.381$ S/m; $\epsilon_r = 39.343$;
 $\rho = 1000$ kg/m³
Ambient Temperature : 23.4 °C ; Liquid Temperature : 22.4 °C

DASY5 Configuration

- Probe: ES3DV3 - SN3270; ConvF(5.2, 5.2, 5.2) @ 1860 MHz; Calibrated: 2019/9/25
- Sensor-Surface: 3mm (Mechanical Surface Detection)
- Electronics: DAE4 Sn778; Calibrated: 2019/5/21
- Phantom: Twin-SAM V5.0 (30deg probe tilt); Type: QD 000 P40 CD; Serial: 1885
- Measurement SW: DASY52, Version 52.10 (2); SEMCAD X Version 14.6.12 (7450)

Area Scan (61x71x1): Interpolated grid: dx=1.500 mm, dy=1.500 mm
Maximum value of SAR (interpolated) = 8.04 W/kg

Zoom Scan (5x5x7)/Cube 0: Measurement grid: dx=8mm, dy=8mm, dz=5mm
Reference Value = 83.69 V/m; Power Drift = 0.13 dB
Peak SAR (extrapolated) = 19.1 W/kg
SAR(1 g) = 6.01 W/kg; SAR(10 g) = 2.06 W/kg
Maximum value of SAR (measured) = 9.06 W/kg



0 dB = 9.06 W/kg = 9.57 dBW/kg

#38_LTE Band 7_20M_QPSK_1_0_Bottom Side_0mm_Ch21100

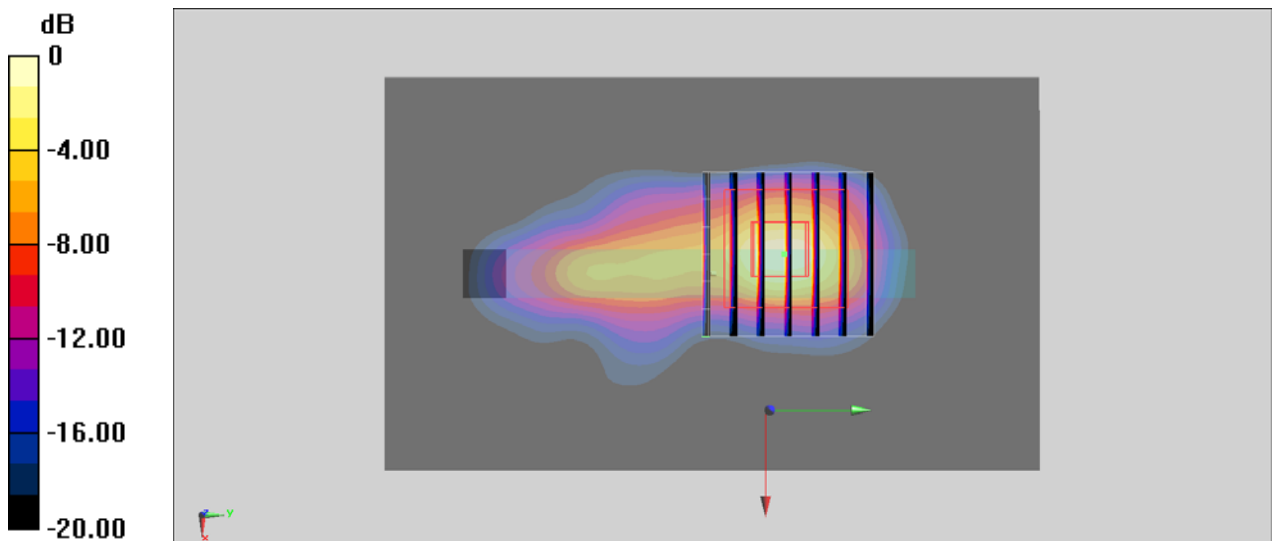
Communication System: LTE; Frequency: 2535 MHz; Duty Cycle: 1:1
 Medium: HSL_2600_200424 Medium parameters used: $f = 2535 \text{ MHz}$; $\sigma = 1.877 \text{ S/m}$; $\epsilon_r = 40.682$;
 $\rho = 1000 \text{ kg/m}^3$
 Ambient Temperature : 23.4°C ; Liquid Temperature : 22.4°C

DASY5 Configuration

- Probe: ES3DV3 - SN3270; ConvF(4.51, 4.51, 4.51) @ 2535 MHz; Calibrated: 2019/9/25
- Sensor-Surface: 3mm (Mechanical Surface Detection)
- Electronics: DAE4 Sn778; Calibrated: 2019/5/21
- Phantom: Twin-SAM V5.0 (30deg probe tilt); Type: QD 000 P40 CD; Serial: 1885
- Measurement SW: DASY52, Version 52.10 (2); SEMCAD X Version 14.6.12 (7450)

Area Scan (61x101x1): Interpolated grid: $dx=1.200 \text{ mm}$, $dy=1.200 \text{ mm}$
 Maximum value of SAR (interpolated) = 11.6 W/kg

Zoom Scan (7x7x7)/Cube 0: Measurement grid: $dx=5\text{mm}$, $dy=5\text{mm}$, $dz=5\text{mm}$
 Reference Value = 46.71 V/m ; Power Drift = 0.15 dB
 Peak SAR (extrapolated) = 27.1 W/kg
SAR(1 g) = 8.26 W/kg ; SAR(10 g) = 2.58 W/kg
 Maximum value of SAR (measured) = 12.9 W/kg



0 dB = $12.9 \text{ W/kg} = 11.11 \text{ dBW/kg}$

#39_LTE Band 66_20M_QPSK_1_0_Bottom Side_0mm_Ch132572

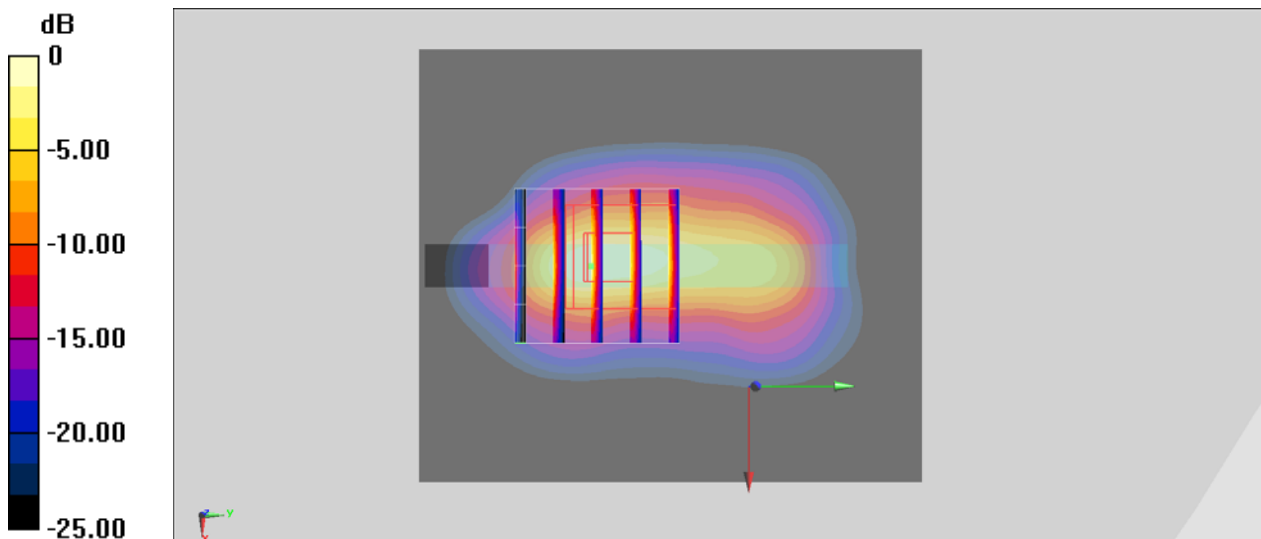
Communication System: LTE; Frequency: 1770 MHz; Duty Cycle: 1:1
Medium: HSL_1750_200423 Medium parameters used: $f = 1770$ MHz; $\sigma = 1.386$ S/m; $\epsilon_r = 40.564$;
 $\rho = 1000$ kg/m³
Ambient Temperature : 23.4 °C ; Liquid Temperature : 22.4 °C

DASY5 Configuration

- Probe: ES3DV3 - SN3270; ConvF(5.41, 5.41, 5.41) @ 1770 MHz; Calibrated: 2019/9/25
- Sensor-Surface: 3mm (Mechanical Surface Detection)
- Electronics: DAE4 Sn778; Calibrated: 2019/5/21
- Phantom: Twin-SAM V5.0 (30deg probe tilt); Type: QD 000 P40 CD; Serial: 1885
- Measurement SW: DASY52, Version 52.10 (2); SEMCAD X Version 14.6.12 (7450)

Area Scan (61x71x1): Interpolated grid: dx=1.500 mm, dy=1.500 mm
Maximum value of SAR (interpolated) = 8.08 W/kg

Zoom Scan (5x5x7)/Cube 0: Measurement grid: dx=8mm, dy=8mm, dz=5mm
Reference Value = 77.74 V/m; Power Drift = 0.17 dB
Peak SAR (extrapolated) = 17.6 W/kg
SAR(1 g) = 5.48 W/kg; SAR(10 g) = 2.02 W/kg
Maximum value of SAR (measured) = 8.33 W/kg



0 dB = 8.33 W/kg = 9.21 dBW/kg