

System Check_Head_2600MHz

DUT: D2600V2 - SN:1061

Communication System: UID 0, CW (0); Frequency: 2600 MHz; Duty Cycle: 1:1

Medium: HSL_2600 Medium parameters used: $f = 2600$ MHz; $\sigma = 2.022$ S/m; $\epsilon_r = 37.786$; $\rho = 1000$ kg/m³

Ambient Temperature : 23.3 °C ; Liquid Temperature : 22.6 °C

DASY5 Configuration:

- Probe: EX3DV4 - SN3935; ConvF(7.38, 7.38, 7.38); Calibrated: 2018.11.26
- Sensor-Surface: 1.4mm (Mechanical Surface Detection)
- Electronics: DAE4 Sn690; Calibrated: 2019.1.23
- Phantom: SAM1; Type: SAM; Serial: TP-1697
- Measurement SW: DASY52, Version 52.10 (1); SEMCAD X Version 14.6.11 (7439)

Pin=250mW/Area Scan (71x71x1): Interpolated grid: dx=1.200 mm, dy=1.200 mm

Maximum value of SAR (interpolated) = 22.5 W/kg

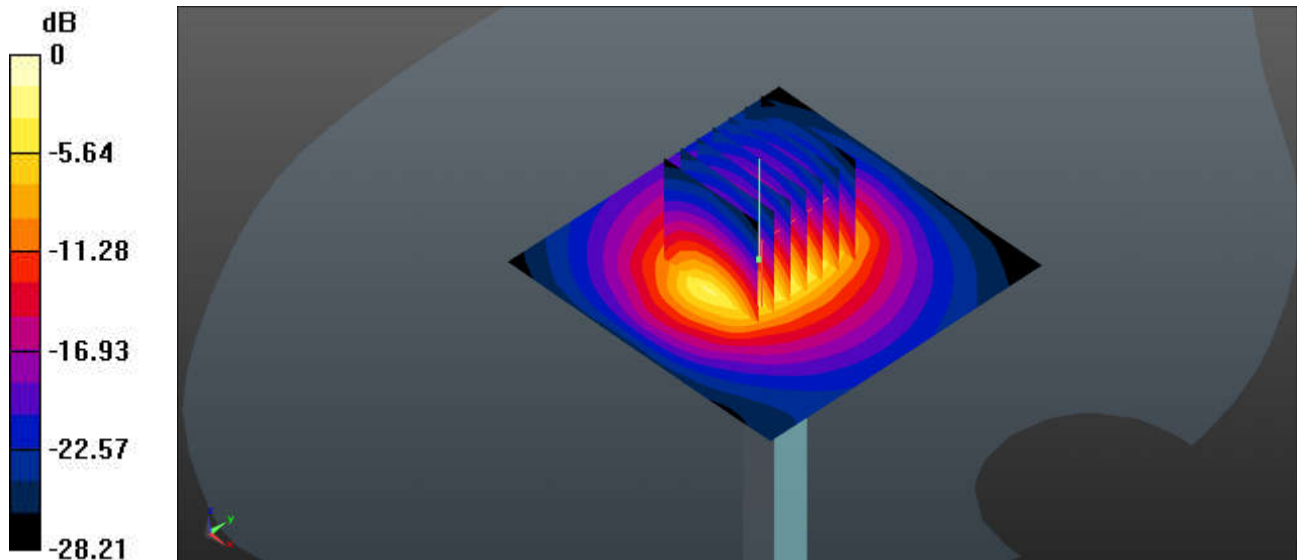
Pin=250mW/Zoom Scan (7x7x7)/Cube 0: Measurement grid: dx=5mm, dy=5mm, dz=5mm

Reference Value = 95.86 V/m; Power Drift = 0.01 dB

Peak SAR (extrapolated) = 30.2 W/kg

SAR(1 g) = 13.8 W/kg; SAR(10 g) = 6.05 W/kg

Maximum value of SAR (measured) = 21.8 W/kg



0 dB = 22.5 W/kg = 13.52 dBW/kg

System Check_Head_5250MHz

DUT: D5GHzV2 - SN:1128

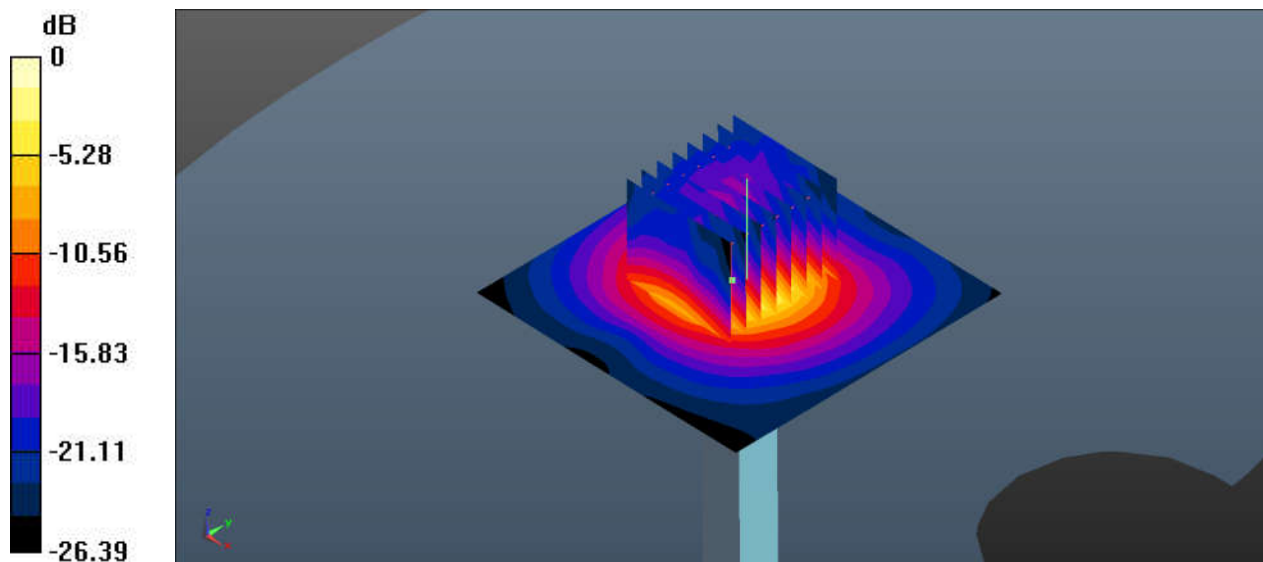
Communication System: UID 0, CW (0); Frequency: 5250 MHz; Duty Cycle: 1:1
Medium: HSL_5000 Medium parameters used: $f = 5250$ MHz; $\sigma = 4.595$ S/m; $\epsilon_r = 36.402$; $\rho = 1000$ kg/m³
Ambient Temperature : 23.2 °C; Liquid Temperature : 22.8 °C

DASY5 Configuration:

- Probe: EX3DV4 - SN3857; ConvF(5.19, 5.19, 5.19); Calibrated: 2019.5.27
- Sensor-Surface: 1.4mm (Mechanical Surface Detection)
- Electronics: DAE4 Sn690; Calibrated: 2019.1.23
- Phantom: SAM1; Type: SAM; Serial: TP-1697
- Measurement SW: DASY52, Version 52.10 (1); SEMCAD X Version 14.6.11 (7439)

Pin=100mW/Area Scan (71x71x1): Interpolated grid: dx=1.000 mm, dy=1.000 mm
Maximum value of SAR (interpolated) = 17.2 W/kg

Pin=100mW/Zoom Scan (8x8x7)/Cube 0: Measurement grid: dx=4mm, dy=4mm, dz=1.4mm
Reference Value = 38.41 V/m; Power Drift = 0.06 dB
Peak SAR (extrapolated) = 27.4 W/kg
SAR(1 g) = 7.73 W/kg; SAR(10 g) = 2.23 W/kg
Maximum value of SAR (measured) = 17.0 W/kg



0 dB = 17.2 W/kg = 12.83 dBW/kg

System Check_Head_5600MHz

DUT: D5GHzV2 - SN:1128

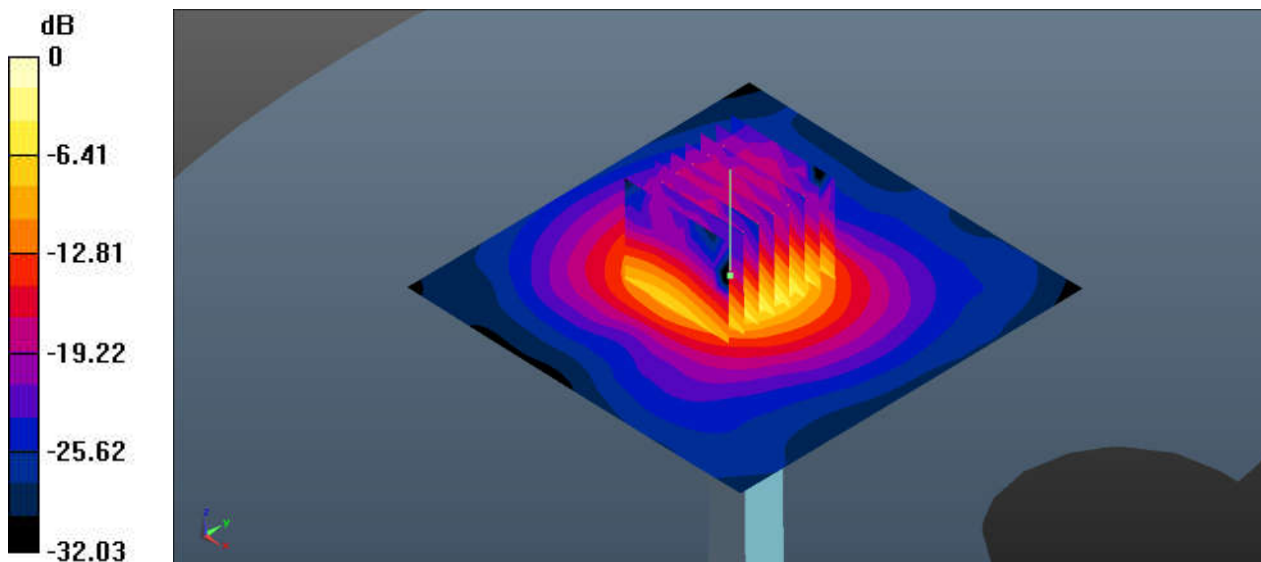
Communication System: UID 0, CW (0); Frequency: 5600 MHz; Duty Cycle: 1:1
Medium: HSL_5000 Medium parameters used: $f = 5600$ MHz; $\sigma = 4.985$ S/m; $\epsilon_r = 35.825$; $\rho = 1000$ kg/m³
Ambient Temperature : 23.3 °C ; Liquid Temperature : 22.7 °C

DASY5 Configuration:

- Probe: EX3DV4 - SN3857; ConvF(4.92, 4.92, 4.92); Calibrated: 2019.5.27
- Sensor-Surface: 1.4mm (Mechanical Surface Detection)
- Electronics: DAE4 Sn690; Calibrated: 2019.1.23
- Phantom: SAM1; Type: SAM; Serial: TP-1697
- Measurement SW: DASY52, Version 52.10 (1); SEMCAD X Version 14.6.11 (7439)

Pin=100mW/Area Scan (91x91x1): Interpolated grid: dx=1.000 mm, dy=1.000 mm
Maximum value of SAR (interpolated) = 20.7 W/kg

Pin=100mW/Zoom Scan (8x8x7)/Cube 0: Measurement grid: dx=4mm, dy=4mm, dz=1.4mm
Reference Value = 38.83 V/m; Power Drift = 0.09 dB
Peak SAR (extrapolated) = 36.1 W/kg
SAR(1 g) = 8.23 W/kg; SAR(10 g) = 2.34 W/kg
Maximum value of SAR (measured) = 20.6 W/kg



0 dB = 20.7 W/kg = 13.16 dBW/kg

System Check_Head_5750MHz

DUT: D5GHzV2 - SN:1128

Communication System: UID 0, CW (0); Frequency: 5750 MHz; Duty Cycle: 1:1
Medium: HSL_5000 Medium parameters used: $f = 5750$ MHz; $\sigma = 5.161$ S/m; $\epsilon_r = 35.569$; $\rho = 1000$ kg/m³
Ambient Temperature : 23.3 °C ; Liquid Temperature : 22.8 °C

DASY5 Configuration:

- Probe: EX3DV4 - SN3857; ConvF(5.17, 5.17, 5.17); Calibrated: 2019.5.27
- Sensor-Surface: 1.4mm (Mechanical Surface Detection)
- Electronics: DAE4 Sn690; Calibrated: 2019.1.23
- Phantom: SAM1; Type: SAM; Serial: TP-1697
- Measurement SW: DASY52, Version 52.10 (1); SEMCAD X Version 14.6.11 (7439)

Pin=100mW/Area Scan (71x71x1): Interpolated grid: dx=1.000 mm, dy=1.000 mm

Maximum value of SAR (interpolated) = 20.5 W/kg

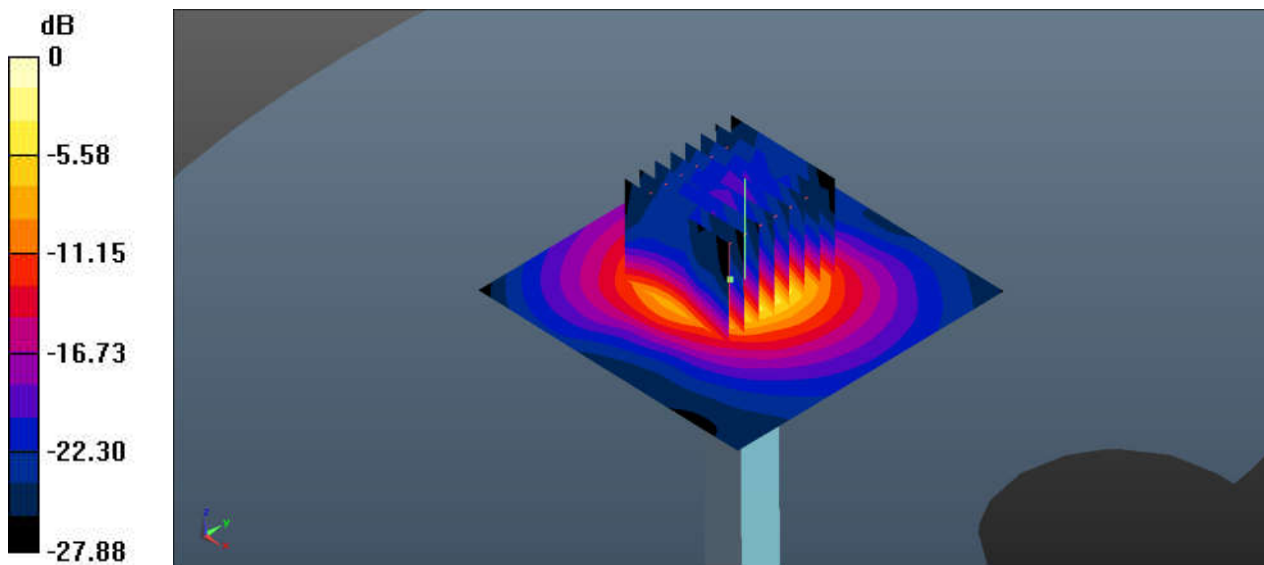
Pin=100mW/Zoom Scan (8x8x7)/Cube 0: Measurement grid: dx=4mm, dy=4mm, dz=1.4mm

Reference Value = 37.32 V/m; Power Drift = 0.06 dB

Peak SAR (extrapolated) = 32.1 W/kg

SAR(1 g) = 8.19 W/kg; SAR(10 g) = 2.25 W/kg

Maximum value of SAR (measured) = 17.6 W/kg



0 dB = 20.5 W/kg = 13.22 dBW/kg



Appendix B. Plots of High SAR Measurement

The plots are shown as follows.

01_GSM850_GPRS 4 Tx slots_Right Cheek_5mm_Ch251

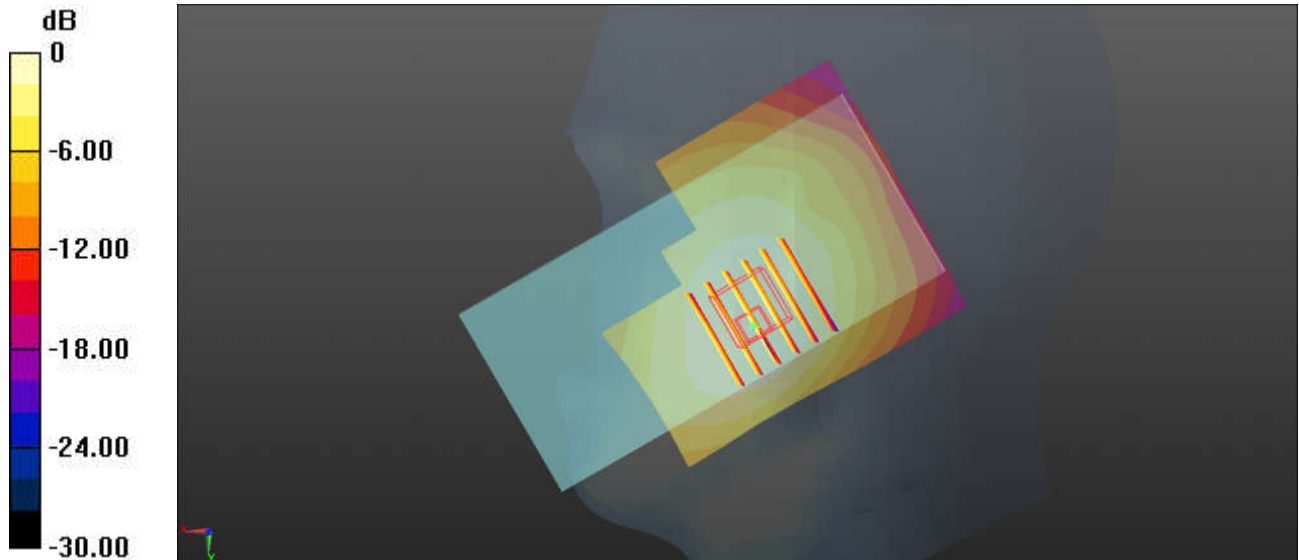
Communication System: UID 0, GSM850-4UP (0); Frequency: 848.8 MHz; Duty Cycle: 1:2.08
Medium: HSL_850 Medium parameters used: $f = 848.8$ MHz; $\sigma = 0.943$ S/m; $\epsilon_r = 42.081$; $\rho = 1000$ kg/m³
Ambient Temperature : 23.2 °C; Liquid Temperature : 22.9 °C

DASY5 Configuration:

- Probe: EX3DV4 - SN3935; ConvF(10.48, 10.48, 10.48); Calibrated: 2018.11.26
- Sensor-Surface: 1.4mm (Mechanical Surface Detection)
- Electronics: DAE4 Sn690; Calibrated: 2019.1.23
- Phantom: SAM2; Type: SAM; Serial: TP-1754
- Measurement SW: DASY52, Version 52.10 (1); SEMCAD X Version 14.6.11 (7439)

Ch251/Area Scan (71x81x1): Interpolated grid: dx=1.500 mm, dy=1.500 mm
Maximum value of SAR (interpolated) = 0.254 W/kg

Ch251/Zoom Scan (6x6x7)/Cube 0: Measurement grid: dx=8mm, dy=8mm, dz=5mm
Reference Value = 4.382 V/m; Power Drift = 0.02 dB
Peak SAR (extrapolated) = 0.357 W/kg
SAR(1 g) = 0.288 W/kg; SAR(10 g) = 0.218 W/kg
Maximum value of SAR (measured) = 0.336 W/kg



02_GSM1900_GPRS 3 Tx slots_Left Cheek_0mm_Ch810

Communication System: UID 0, PCS-3UP (0); Frequency: 1909.8 MHz; Duty Cycle: 1:2.77
Medium: HSL_1900 Medium parameters used: $f = 1909.8$ MHz; $\sigma = 1.438$ S/m; $\epsilon_r = 38.682$; $\rho = 1000$ kg/m³
Ambient Temperature : 23.3 °C; Liquid Temperature : 22.9 °C

DASY5 Configuration:

- Probe: EX3DV4 - SN3935; ConvF(8.5, 8.5, 8.5); Calibrated: 2018.11.26
- Sensor-Surface: 1.4mm (Mechanical Surface Detection)
- Electronics: DAE4 Sn690; Calibrated: 2019.1.23
- Phantom: SAM2; Type: SAM; Serial: TP-1754
- Measurement SW: DASY52, Version 52.10 (1); SEMCAD X Version 14.6.11 (7439)

Ch810/Area Scan (81x81x1): Interpolated grid: dx=1.500 mm, dy=1.500 mm

Maximum value of SAR (interpolated) = 0.179 W/kg

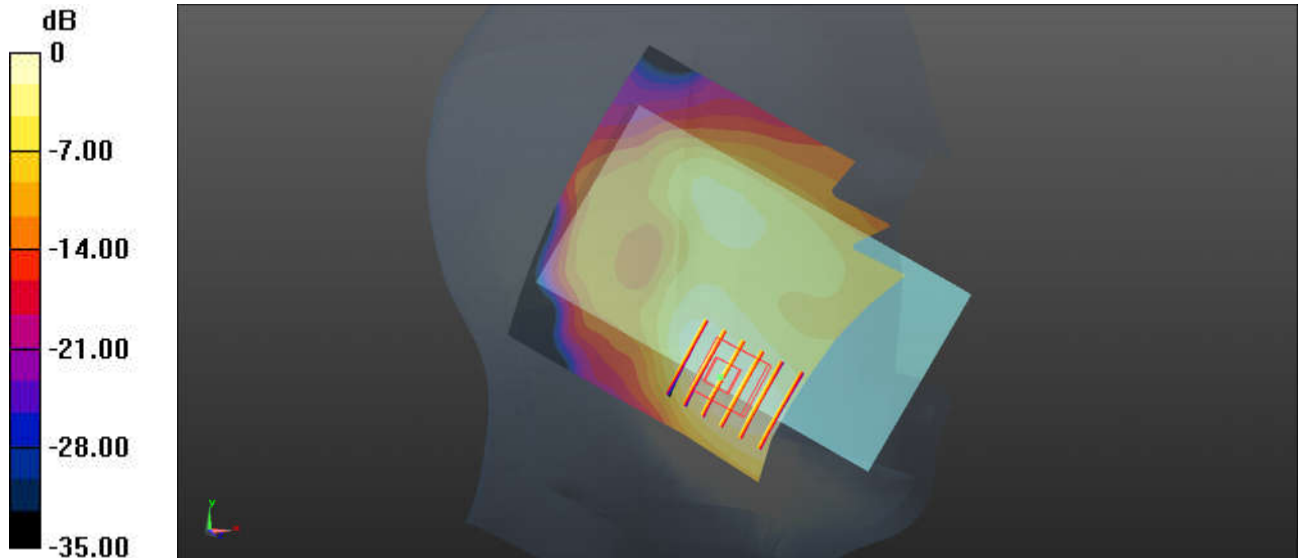
Ch810/Zoom Scan (5x6x7)/Cube 0: Measurement grid: dx=8mm, dy=8mm, dz=5mm

Reference Value = 3.727 V/m; Power Drift = 0.02 dB

Peak SAR (extrapolated) = 0.210 W/kg

SAR(1 g) = 0.128 W/kg; SAR(10 g) = 0.076 W/kg

Maximum value of SAR (measured) = 0.181 W/kg



0 dB = 0.179 W/kg = -7.47 dBW/kg

03_WCDMA V_RMC 12.2Kbps_Right Cheek_0mm_Ch4233

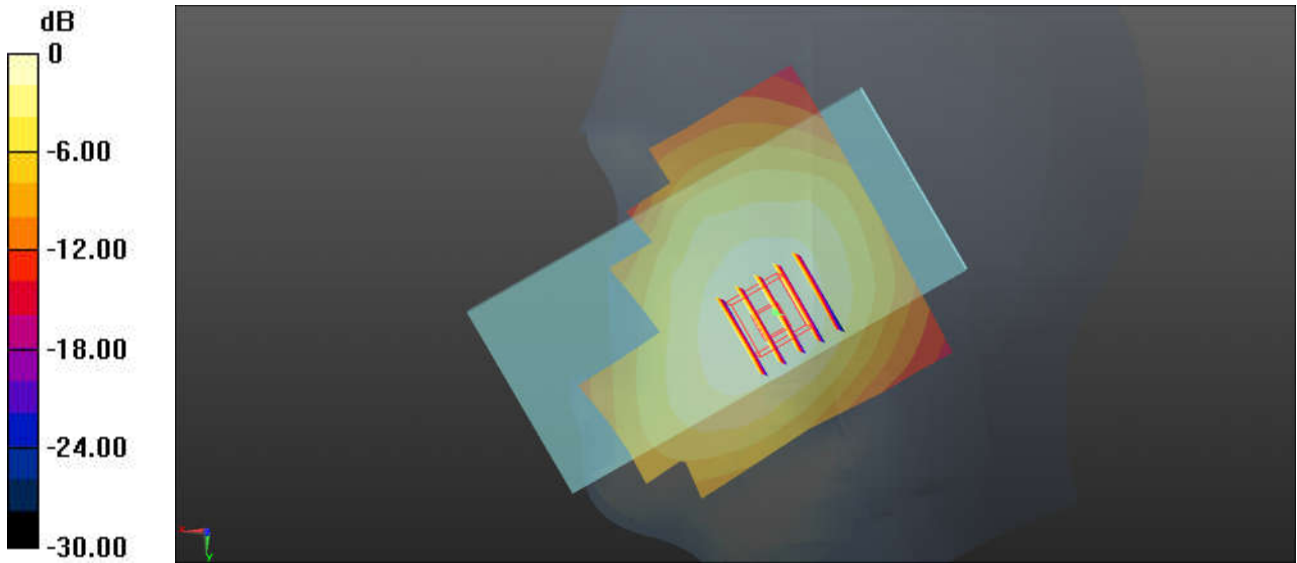
Communication System: UID 0, WCDMA (0); Frequency: 846.6 MHz; Duty Cycle: 1:1
Medium: HSL_850 Medium parameters used: $f = 846.6$ MHz; $\sigma = 0.941$ S/m; $\epsilon_r = 42.1$; $\rho = 1000$ kg/m³
Ambient Temperature : 23.2 °C ; Liquid Temperature : 22.9 °C

DASY5 Configuration:

- Probe: EX3DV4 - SN3935; ConvF(10.48, 10.48, 10.48); Calibrated: 2018.11.26
- Sensor-Surface: 1.4mm (Mechanical Surface Detection)
- Electronics: DAE4 Sn690; Calibrated: 2019.1.23
- Phantom: SAM2; Type: SAM; Serial: TP-1754
- Measurement SW: DASY52, Version 52.10 (1); SEMCAD X Version 14.6.11 (7439)

Ch4233/Area Scan (81x81x1): Interpolated grid: dx=1.500 mm, dy=1.500 mm
Maximum value of SAR (interpolated) = 0.296 W/kg

Ch4233/Zoom Scan (5x5x7)/Cube 0: Measurement grid: dx=8mm, dy=8mm, dz=5mm
Reference Value = 4.031 V/m; Power Drift = 0.03 dB
Peak SAR (extrapolated) = 0.427 W/kg
SAR(1 g) = 0.342 W/kg; SAR(10 g) = 0.263 W/kg
Maximum value of SAR (measured) = 0.373 W/kg



0 dB = 0.296 W/kg = -5.29 dBW/kg

04_WCDMA IV_RMC 12.2Kbps_Left Cheek_0mm_Ch1513

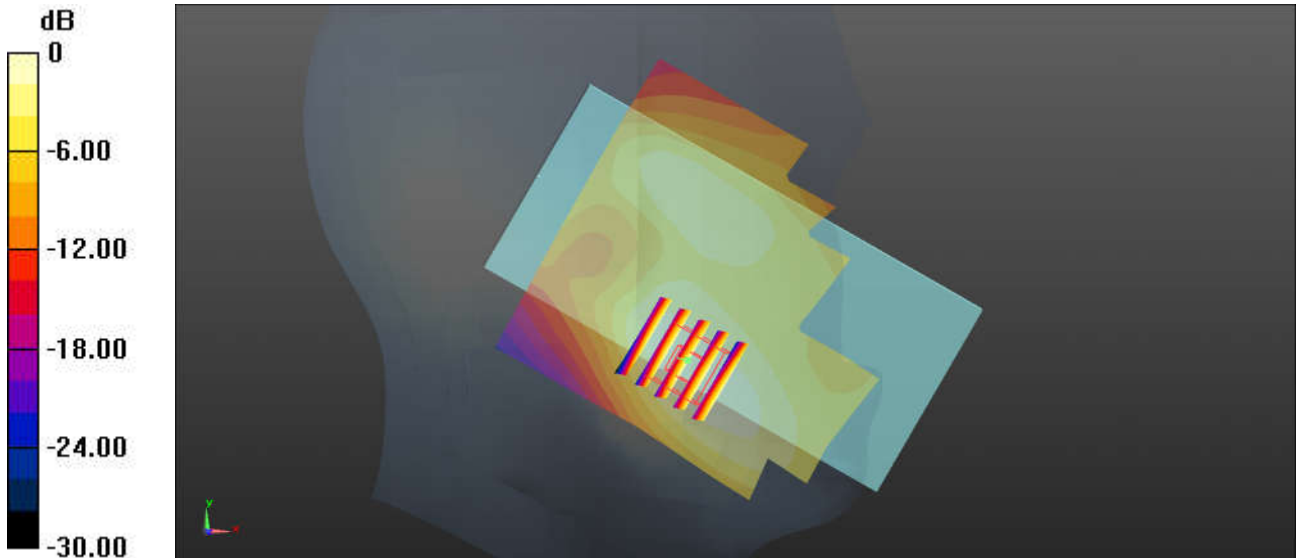
Communication System: UID 0, WCDMA (0); Frequency: 1752.6 MHz; Duty Cycle: 1:1
Medium: HSL_1750 Medium parameters used: $f = 1752.6$ MHz; $\sigma = 1.385$ S/m; $\epsilon_r = 39.691$; $\rho = 1000$ kg/m³
Ambient Temperature : 23.2 °C; Liquid Temperature : 22.9 °C

DASY5 Configuration:

- Probe: EX3DV4 - SN3935; ConvF(8.91, 8.91, 8.91); Calibrated: 2018.11.26
- Sensor-Surface: 1.4mm (Mechanical Surface Detection)
- Electronics: DAE4 Sn690; Calibrated: 2019.1.23
- Phantom: SAM2; Type: SAM; Serial: TP-1754
- Measurement SW: DASY52, Version 52.10 (1); SEMCAD X Version 14.6.11 (7439)

Ch1513/Area Scan (81x81x1): Interpolated grid: dx=1.500 mm, dy=1.500 mm
Maximum value of SAR (interpolated) = 0.259 W/kg

Ch1513/Zoom Scan (5x5x7)/Cube 0: Measurement grid: dx=8mm, dy=8mm, dz=5mm
Reference Value = 5.114 V/m; Power Drift = -0.05 dB
Peak SAR (extrapolated) = 0.290 W/kg
SAR(1 g) = 0.192 W/kg; SAR(10 g) = 0.122 W/kg
Maximum value of SAR (measured) = 0.253 W/kg



0 dB = 0.259 W/kg = -5.87 dBW/kg

05_WCDMA II_RMC 12.2Kbps_Left Cheek_0mm_Ch9538

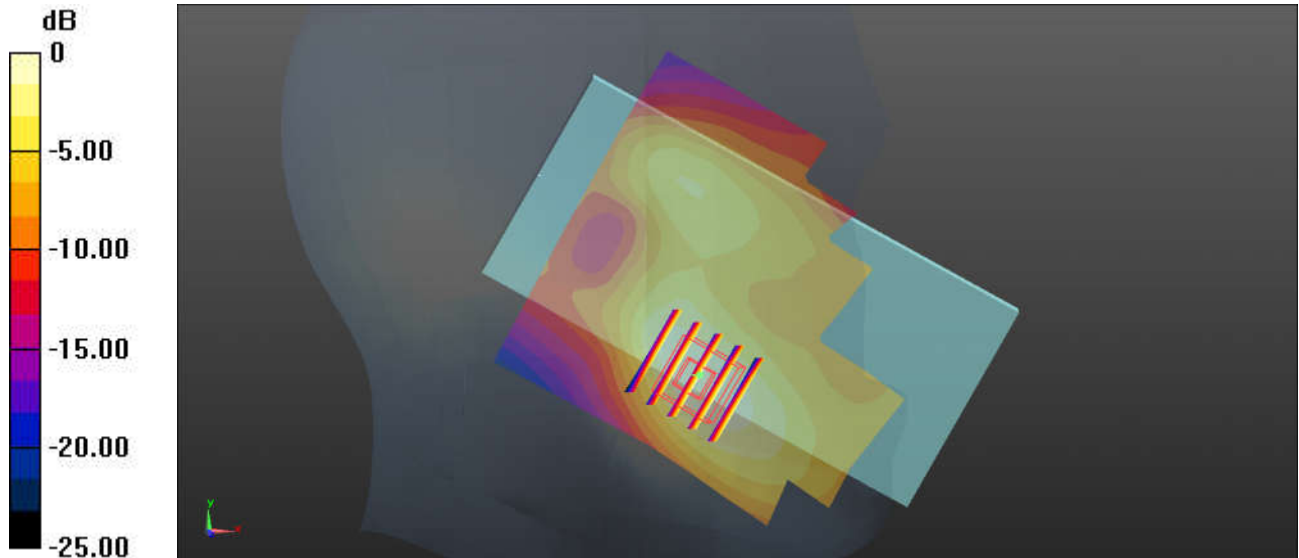
Communication System: UID 0, WCDMA (0); Frequency: 1907.6 MHz; Duty Cycle: 1:1
Medium: HSL_1900 Medium parameters used: $f = 1907.6$ MHz; $\sigma = 1.435$ S/m; $\epsilon_r = 38.692$; $\rho = 1000$ kg/m³
Ambient Temperature : 23.3 °C; Liquid Temperature : 22.9 °C

DASY5 Configuration:

- Probe: EX3DV4 - SN3935; ConvF(8.5, 8.5, 8.5); Calibrated: 2018.11.26
- Sensor-Surface: 1.4mm (Mechanical Surface Detection)
- Electronics: DAE4 Sn690; Calibrated: 2019.1.23
- Phantom: SAM2; Type: SAM; Serial: TP-1754
- Measurement SW: DASY52, Version 52.10 (1); SEMCAD X Version 14.6.11 (7439)

Ch9538/Area Scan (81x81x1): Interpolated grid: dx=1.500 mm, dy=1.500 mm
Maximum value of SAR (interpolated) = 0.317 W/kg

Ch9538/Zoom Scan (5x5x7)/Cube 0: Measurement grid: dx=8mm, dy=8mm, dz=5mm
Reference Value = 5.083 V/m; Power Drift = 0.01 dB
Peak SAR (extrapolated) = 0.365 W/kg
SAR(1 g) = 0.224 W/kg; SAR(10 g) = 0.133 W/kg
Maximum value of SAR (measured) = 0.311 W/kg



0 dB = 0.317 W/kg = -4.99 dBW/kg

06_CDMA2000 BC10_RC3 SO55 _Right Cheek_0mm_Ch580

Communication System: UID 0, CDMA (0); Frequency: 820.5 MHz; Duty Cycle: 1:1

Medium: HSL_850 Medium parameters used: $f = 820.5$ MHz; $\sigma = 0.914$ S/m; $\epsilon_r = 42.388$; $\rho = 1000$ kg/m³

Ambient Temperature : 23.2 °C; Liquid Temperature : 22.9 °C

DASY5 Configuration:

- Probe: EX3DV4 - SN3935; ConvF(10.48, 10.48, 10.48); Calibrated: 2018.11.26
- Sensor-Surface: 1.4mm (Mechanical Surface Detection)
- Electronics: DAE4 Sn690; Calibrated: 2019.1.23
- Phantom: SAM2; Type: SAM; Serial: TP-1754
- Measurement SW: DASY52, Version 52.10 (1); SEMCAD X Version 14.6.11 (7439)

Ch580/Area Scan (81x81x1): Interpolated grid: dx=1.500 mm, dy=1.500 mm

Maximum value of SAR (interpolated) = 0.353 W/kg

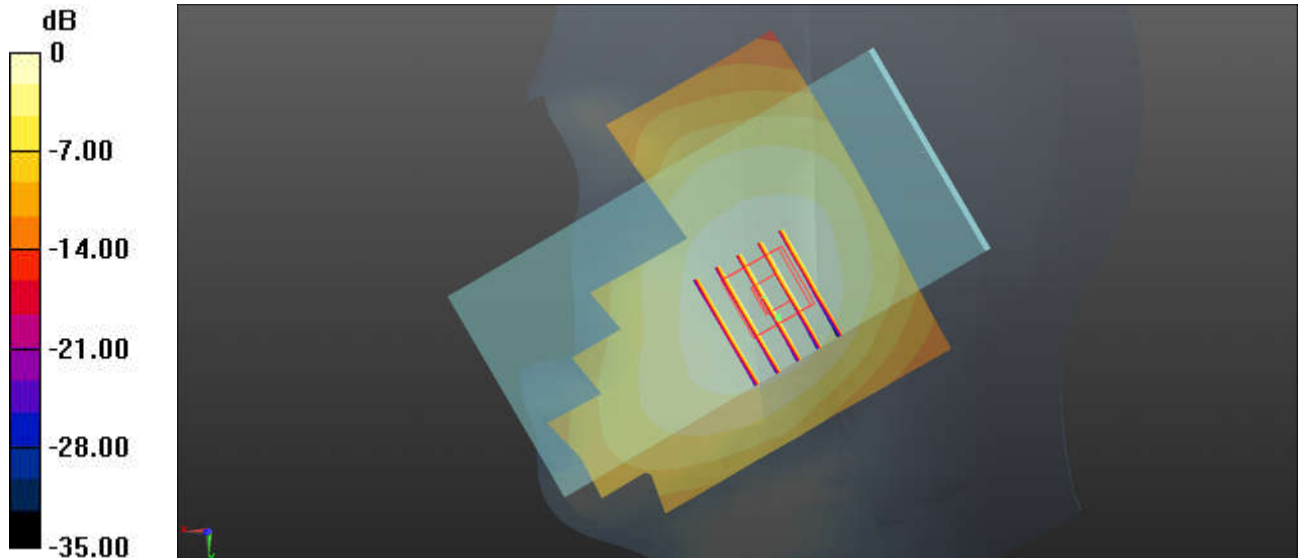
Ch580/Zoom Scan (6x5x7)/Cube 0: Measurement grid: dx=8mm, dy=8mm, dz=5mm

Reference Value = 5.247 V/m; Power Drift = 0.09 dB

Peak SAR (extrapolated) = 0.373 W/kg

SAR(1 g) = 0.302 W/kg; SAR(10 g) = 0.233 W/kg

Maximum value of SAR (measured) = 0.348 W/kg



0 dB = 0.353 W/kg = -4.52 dBW/kg

07_CDMA2000 BC0_RC3 SO55 _Right Cheek_0mm_Ch384

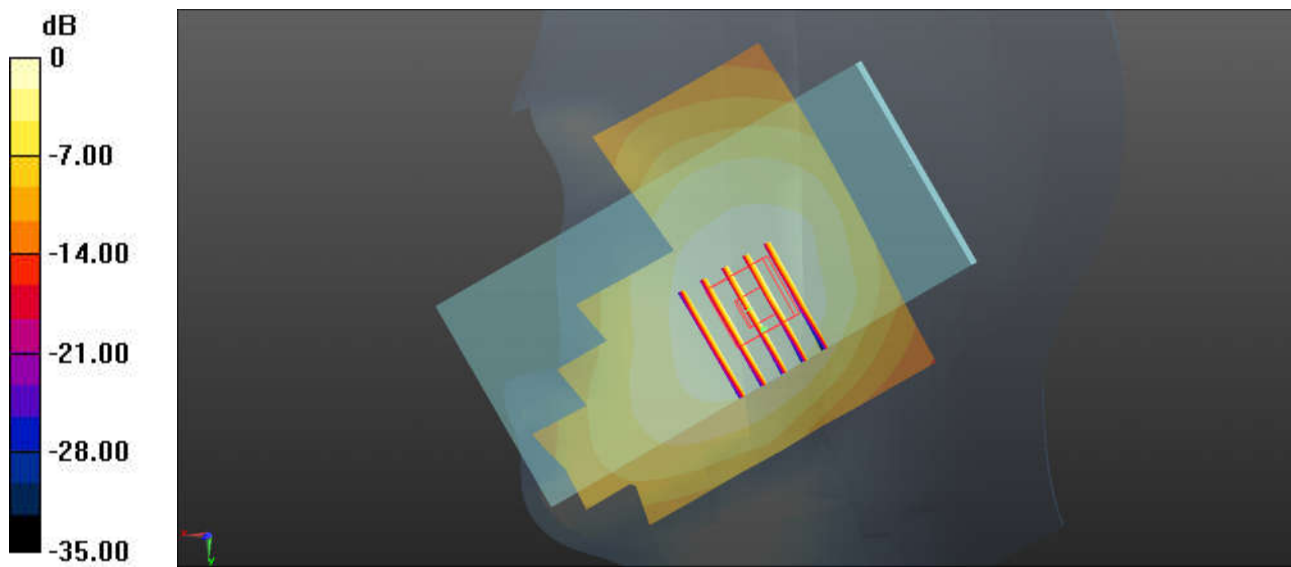
Communication System: UID 0, CDMA (0); Frequency: 836.52 MHz; Duty Cycle: 1:1
Medium: HSL_850 Medium parameters used: $f = 836.52$ MHz; $\sigma = 0.931$ S/m; $\epsilon_r = 42.2$; $\rho = 1000$ kg/m³
Ambient Temperature : 23.2 °C ; Liquid Temperature : 22.9 °C

DASY5 Configuration:

- Probe: EX3DV4 - SN3935; ConvF(10.48, 10.48, 10.48); Calibrated: 2018.11.26
- Sensor-Surface: 1.4mm (Mechanical Surface Detection)
- Electronics: DAE4 Sn690; Calibrated: 2019.1.23
- Phantom: SAM2; Type: SAM; Serial: TP-1754
- Measurement SW: DASY52, Version 52.10 (1); SEMCAD X Version 14.6.11 (7439)

Ch384/Area Scan (81x81x1): Interpolated grid: dx=1.500 mm, dy=1.500 mm
Maximum value of SAR (interpolated) = 0.475 W/kg

Ch384/Zoom Scan (6x5x7)/Cube 0: Measurement grid: dx=8mm, dy=8mm, dz=5mm
Reference Value = 5.754 V/m; Power Drift = -0.10 dB
Peak SAR (extrapolated) = 0.489 W/kg
SAR(1 g) = 0.393 W/kg; SAR(10 g) = 0.300 W/kg
Maximum value of SAR (measured) = 0.461 W/kg



0 dB = 0.475 W/kg = -3.23 dBW/kg

08_CDMA2000 BC1_RC3 SO55 _Left Cheek_0mm_Ch1175

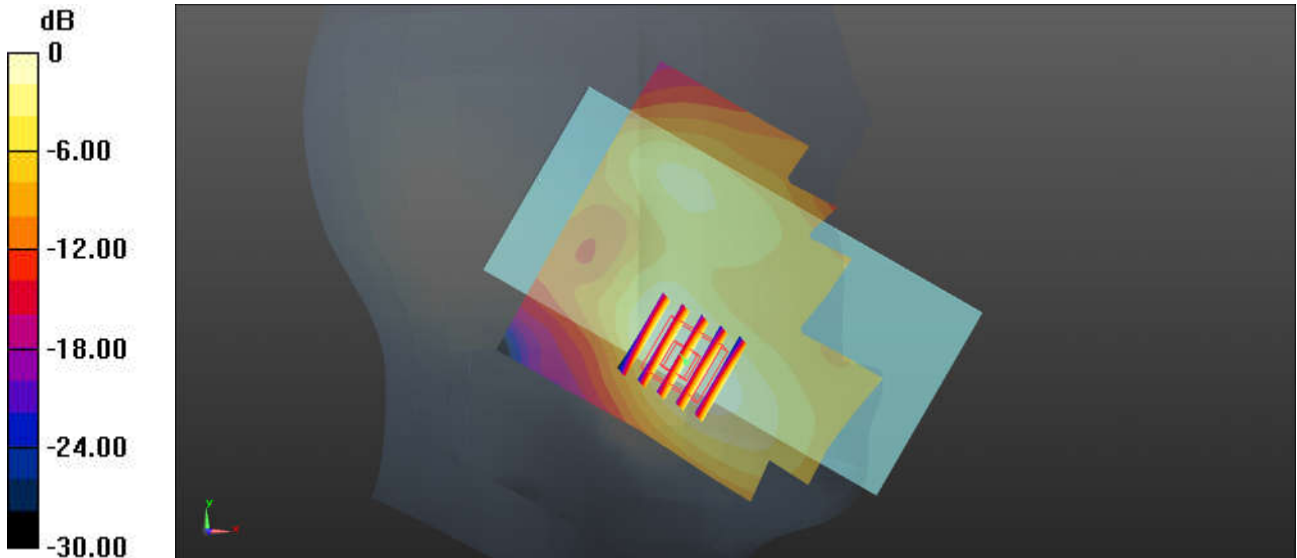
Communication System: UID 0, CDMA (0); Frequency: 1908.75 MHz; Duty Cycle: 1:1
Medium: HSL_1900 Medium parameters used: $f = 1908.75$ MHz; $\sigma = 1.436$ S/m; $\epsilon_r = 38.687$; $\rho = 1000$ kg/m³
Ambient Temperature : 23.3 °C; Liquid Temperature : 22.9 °C

DASY5 Configuration:

- Probe: EX3DV4 - SN3935; ConvF(8.5, 8.5, 8.5); Calibrated: 2018.11.26
- Sensor-Surface: 1.4mm (Mechanical Surface Detection)
- Electronics: DAE4 Sn690; Calibrated: 2019.1.23
- Phantom: SAM2; Type: SAM; Serial: TP-1754
- Measurement SW: DASY52, Version 52.10 (1); SEMCAD X Version 14.6.11 (7439)

Ch1175/Area Scan (81x81x1): Interpolated grid: dx=1.500 mm, dy=1.500 mm
Maximum value of SAR (interpolated) = 0.224 W/kg

Ch1175/Zoom Scan (5x5x7)/Cube 0: Measurement grid: dx=8mm, dy=8mm, dz=5mm
Reference Value = 3.974 V/m; Power Drift = 0.02 dB
Peak SAR (extrapolated) = 0.277 W/kg
SAR(1 g) = 0.169 W/kg; SAR(10 g) = 0.100 W/kg
Maximum value of SAR (measured) = 0.235 W/kg



0 dB = 0.224 W/kg = -6.50 dBW/kg

09_LTE Band 71_20M QPSK_1RB_0Offset_Right Cheek_0mm_Ch133322

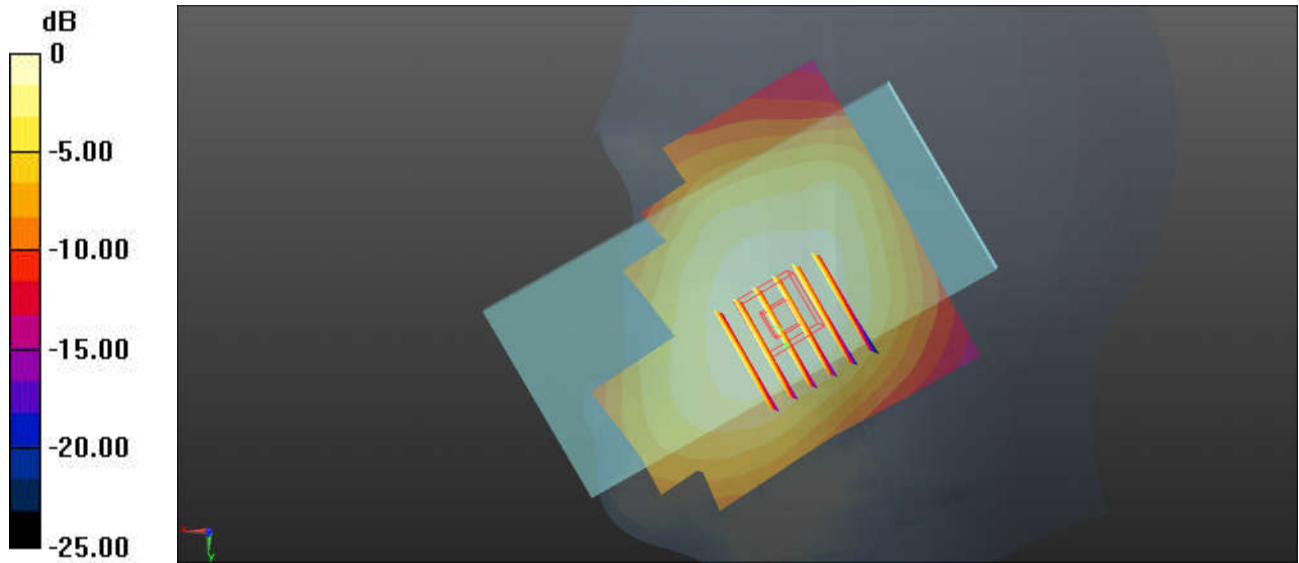
Communication System: UID 0, LTE-FDD (0); Frequency: 683 MHz; Duty Cycle: 1:1
Medium: HSL_750 Medium parameters used: $f = 683$ MHz; $\sigma = 0.846$ S/m; $\epsilon_r = 42.691$; $\rho = 1000$ kg/m³
Ambient Temperature : 23.2 °C ; Liquid Temperature : 22.7 °C

DASY5 Configuration:

- Probe: EX3DV4 - SN3935; ConvF(10.83, 10.83, 10.83); Calibrated: 2018.11.26
- Sensor-Surface: 1.4mm (Mechanical Surface Detection)
- Electronics: DAE4 Sn690; Calibrated: 2019.1.23
- Phantom: SAM2; Type: SAM; Serial: TP-1754
- Measurement SW: DASY52, Version 52.10 (1); SEMCAD X Version 14.6.11 (7439)

Ch133322/Area Scan (81x81x1): Interpolated grid: dx=1.500 mm, dy=1.500 mm
Maximum value of SAR (interpolated) = 0.250 W/kg

Ch133322/Zoom Scan (6x6x7)/Cube 0: Measurement grid: dx=8mm, dy=8mm, dz=5mm
Reference Value = 4.810 V/m; Power Drift = 0.09 dB
Peak SAR (extrapolated) = 0.254 W/kg
SAR(1 g) = 0.219 W/kg; SAR(10 g) = 0.180 W/kg
Maximum value of SAR (measured) = 0.243 W/kg



0 dB = 0.250 W/kg = -6.02 dBW/kg

10_LTE Band 12_10M QPSK_1RB_0Offset_Right Cheek_0mm_Ch23095

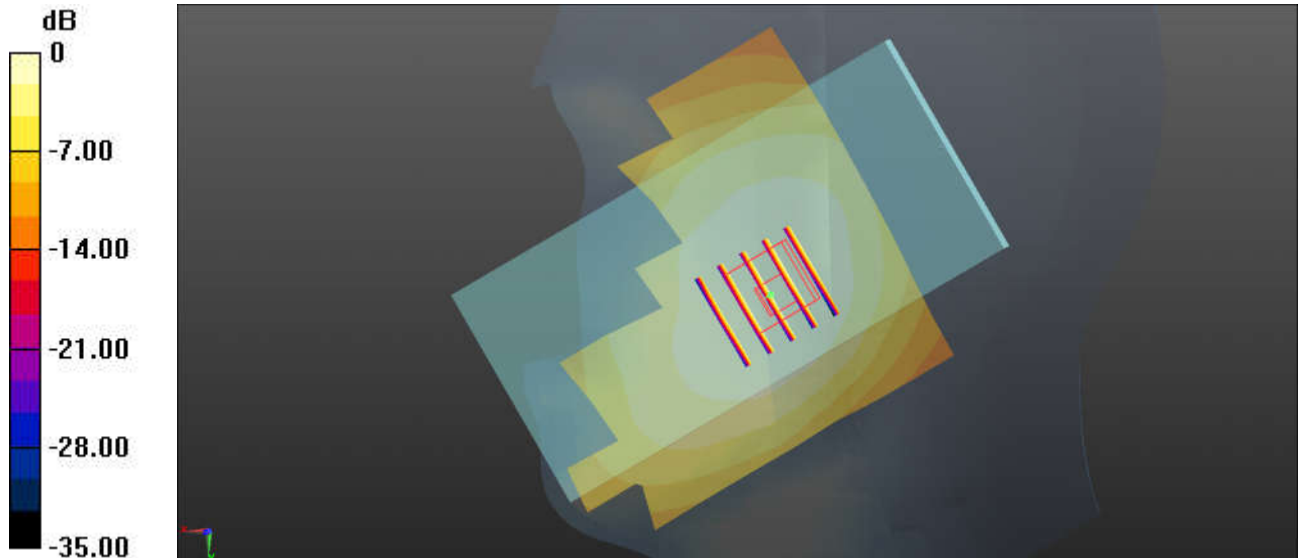
Communication System: UID 0, LTE-FDD (0); Frequency: 707.5 MHz; Duty Cycle: 1:1
Medium: HSL_750 Medium parameters used: $f = 707.5$ MHz; $\sigma = 0.866$ S/m; $\epsilon_r = 42.37$; $\rho = 1000$ kg/m³
Ambient Temperature : 23.2 °C; Liquid Temperature : 22.7 °C

DASY5 Configuration:

- Probe: EX3DV4 - SN3935; ConvF(10.83, 10.83, 10.83); Calibrated: 2018.11.26
- Sensor-Surface: 1.4mm (Mechanical Surface Detection)
- Electronics: DAE4 Sn690; Calibrated: 2019.1.23
- Phantom: SAM2; Type: SAM; Serial: TP-1754
- Measurement SW: DASY52, Version 52.10 (1); SEMCAD X Version 14.6.11 (7439)

Ch23095/Area Scan (81x81x1): Interpolated grid: dx=1.500 mm, dy=1.500 mm
Maximum value of SAR (interpolated) = 0.265 W/kg

Ch23095/Zoom Scan (5x5x7)/Cube 0: Measurement grid: dx=8mm, dy=8mm, dz=5mm
Reference Value = 4.339 V/m; Power Drift = 0.07 dB
Peak SAR (extrapolated) = 0.292 W/kg
SAR(1 g) = 0.245 W/kg; SAR(10 g) = 0.196 W/kg
Maximum value of SAR (measured) = 0.263 W/kg



0 dB = 0.265 W/kg = -5.77 dBW/kg

11_LTE Band 13_10M QPSK_1RB_0Offset_Right Cheek_0mm_Ch23230

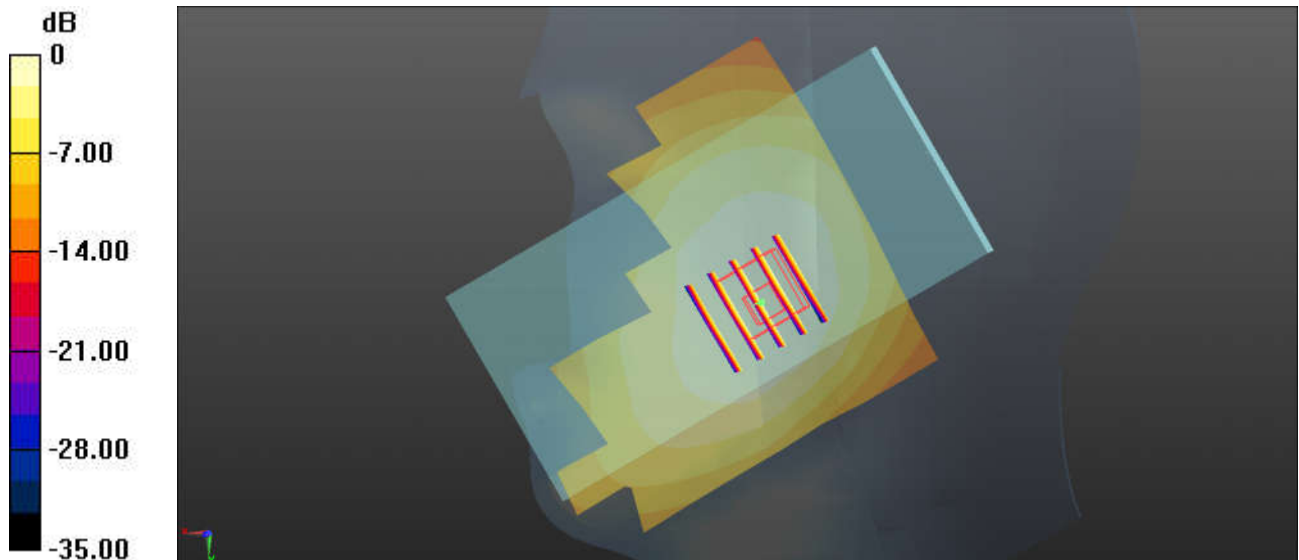
Communication System: UID 0, LTE-FDD (0); Frequency: 782 MHz; Duty Cycle: 1:1
Medium: HSL_750 Medium parameters used: $f = 782 \text{ MHz}$; $\sigma = 0.929 \text{ S/m}$; $\epsilon_r = 41.366$; $\rho = 1000 \text{ kg/m}^3$
Ambient Temperature : $23.2 \text{ }^\circ\text{C}$; Liquid Temperature : $22.7 \text{ }^\circ\text{C}$

DASY5 Configuration:

- Probe: EX3DV4 - SN3935; ConvF(10.83, 10.83, 10.83); Calibrated: 2018.11.26
- Sensor-Surface: 1.4mm (Mechanical Surface Detection)
- Electronics: DAE4 Sn690; Calibrated: 2019.1.23
- Phantom: SAM2; Type: SAM; Serial: TP-1754
- Measurement SW: DASY52, Version 52.10 (1); SEMCAD X Version 14.6.11 (7439)

Ch23230/Area Scan (81x81x1): Interpolated grid: $dx=1.500 \text{ mm}$, $dy=1.500 \text{ mm}$
Maximum value of SAR (interpolated) = 0.277 W/kg

Ch23230/Zoom Scan (5x5x7)/Cube 0: Measurement grid: $dx=8\text{mm}$, $dy=8\text{mm}$, $dz=5\text{mm}$
Reference Value = 3.575 V/m ; Power Drift = 0.01 dB
Peak SAR (extrapolated) = 0.313 W/kg
SAR(1 g) = 0.254 W/kg ; SAR(10 g) = 0.199 W/kg
Maximum value of SAR (measured) = 0.275 W/kg



0 dB = 0.277 W/kg = -5.58 dBW/kg

12_LTE Band 14_10M QPSK_1RB_0Offset_Right Cheek_0mm_Ch23330

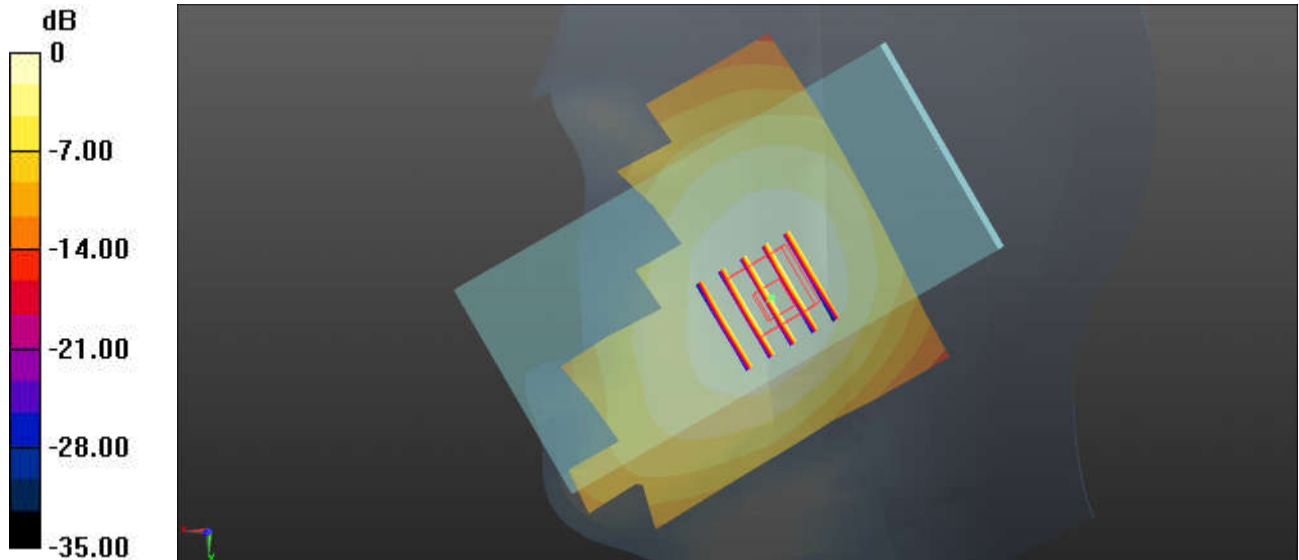
Communication System: UID 0, LTE-FDD (0); Frequency: 793 MHz; Duty Cycle: 1:1
Medium: HSL_750 Medium parameters used: $f = 793$ MHz; $\sigma = 0.941$ S/m; $\epsilon_r = 41.254$; $\rho = 1000$ kg/m³
Ambient Temperature : 23.2 °C; Liquid Temperature : 22.7 °C

DASY5 Configuration:

- Probe: EX3DV4 - SN3935; ConvF(10.83, 10.83, 10.83); Calibrated: 2018.11.26
- Sensor-Surface: 1.4mm (Mechanical Surface Detection)
- Electronics: DAE4 Sn690; Calibrated: 2019.1.23
- Phantom: SAM2; Type: SAM; Serial: TP-1754
- Measurement SW: DASY52, Version 52.10 (1); SEMCAD X Version 14.6.11 (7439)

Ch23330/Area Scan (81x81x1): Interpolated grid: dx=1.500 mm, dy=1.500 mm
Maximum value of SAR (interpolated) = 0.313 W/kg

Ch23330/Zoom Scan (5x5x7)/Cube 0: Measurement grid: dx=8mm, dy=8mm, dz=5mm
Reference Value = 3.488 V/m; Power Drift = 0.02 dB
Peak SAR (extrapolated) = 0.354 W/kg
SAR(1 g) = 0.288 W/kg; SAR(10 g) = 0.224 W/kg
Maximum value of SAR (measured) = 0.312 W/kg



0 dB = 0.313 W/kg = -5.04 dBW/kg

13_LTE Band 26_15M QPSK_1RB_0Offset_Right Cheek_0mm_Ch26865

Communication System: UID 0, LTE-FDD (0); Frequency: 831.5 MHz; Duty Cycle: 1:1
 Medium: HSL_850 Medium parameters used: $f = 831.5$ MHz; $\sigma = 0.925$ S/m; $\epsilon_r = 42.258$; $\rho = 1000$ kg/m³
 Ambient Temperature : 23.2 °C; Liquid Temperature : 22.9 °C

DASY5 Configuration:

- Probe: EX3DV4 - SN3935; ConvF(10.48, 10.48, 10.48); Calibrated: 2018.11.26
- Sensor-Surface: 1.4mm (Mechanical Surface Detection)
- Electronics: DAE4 Sn690; Calibrated: 2019.1.23
- Phantom: SAM2; Type: SAM; Serial: TP:1754
- Measurement SW: DASY52, Version 52.10 (1); SEMCAD X Version 14.6.11 (7439)

Ch26865/Area Scan (81x81x1): Interpolated grid: dx=1.500 mm, dy=1.500 mm

Maximum value of SAR (interpolated) = 0.314 W/kg

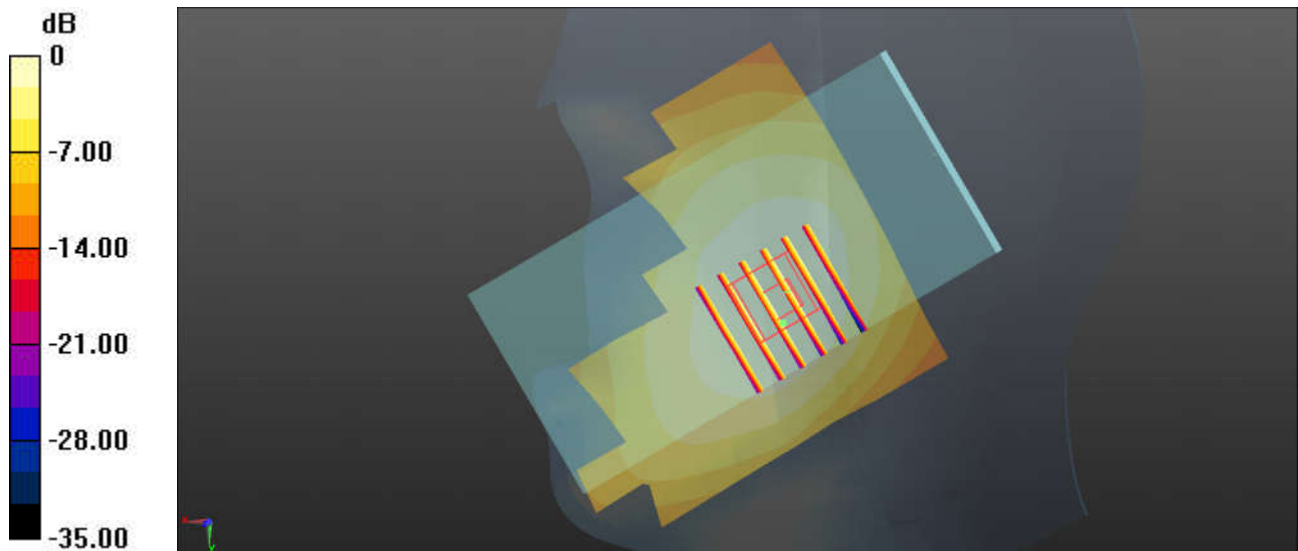
Ch26865/Zoom Scan (6x6x7)/Cube 0: Measurement grid: dx=8mm, dy=8mm, dz=5mm

Reference Value = 4.390 V/m; Power Drift = -0.19 dB

Peak SAR (extrapolated) = 0.362 W/kg

SAR(1 g) = 0.272 W/kg; SAR(10 g) = 0.213 W/kg

Maximum value of SAR (measured) = 0.313 W/kg



0 dB = 0.314 W/kg = -5.03 dBW/kg

14_LTE Band 66_20M QPSK_1RB_0Offset_Left Cheek_0mm_Ch132072

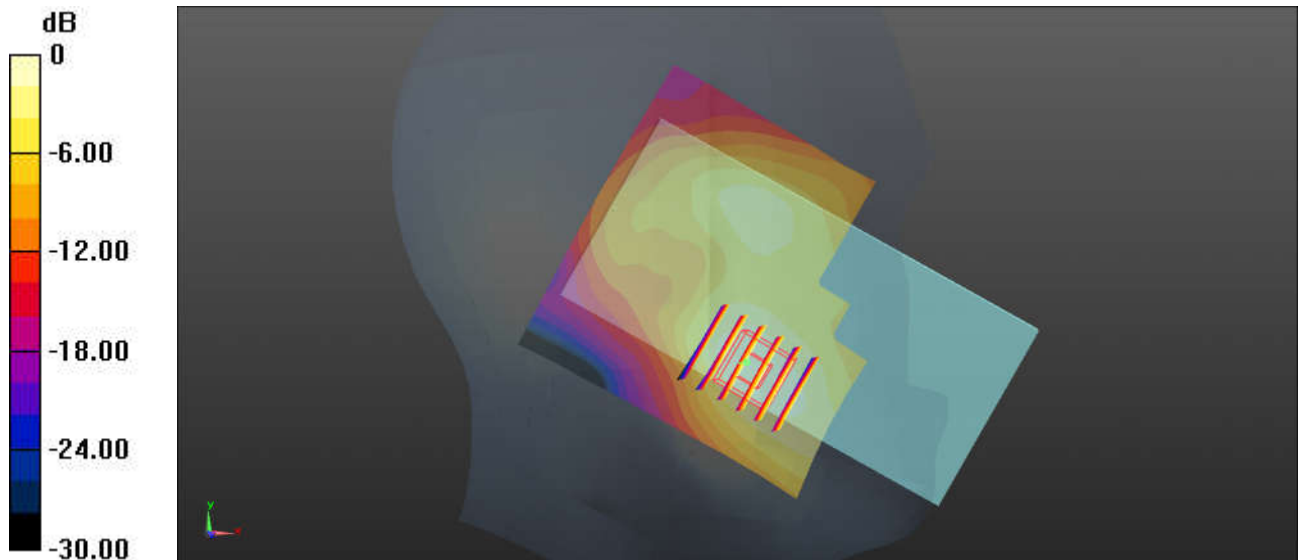
Communication System: UID 0, LTE-FDD (0); Frequency: 1720 MHz; Duty Cycle: 1:1
Medium: HSL_1750 Medium parameters used: $f = 1720$ MHz; $\sigma = 1.349$ S/m; $\epsilon_r = 39.854$; $\rho = 1000$ kg/m³
Ambient Temperature : 23.2 °C; Liquid Temperature : 22.9 °C

DASY5 Configuration:

- Probe: EX3DV4 - SN3935; ConvF(8.91, 8.91, 8.91); Calibrated: 2018.11.26
- Sensor-Surface: 1.4mm (Mechanical Surface Detection)
- Electronics: DAE4 Sn690; Calibrated: 2019.1.23
- Phantom: SAM2; Type: SAM; Serial: TP-1754
- Measurement SW: DASY52, Version 52.10 (1); SEMCAD X Version 14.6.11 (7439)

Ch132072/Area Scan (81x81x1): Interpolated grid: dx=1.500 mm, dy=1.500 mm
Maximum value of SAR (interpolated) = 0.255 W/kg

Ch132072/Zoom Scan (5x6x7)/Cube 0: Measurement grid: dx=8mm, dy=8mm, dz=5mm
Reference Value = 5.491 V/m; Power Drift = 0.02 dB
Peak SAR (extrapolated) = 0.296 W/kg
SAR(1 g) = 0.206 W/kg; SAR(10 g) = 0.134 W/kg
Maximum value of SAR (measured) = 0.235 W/kg



0 dB = 0.255 W/kg = -5.93 dBW/kg

15_LTE Band 25_20M QPSK_1RB_0Offset_Left Cheek_0mm_Ch26590

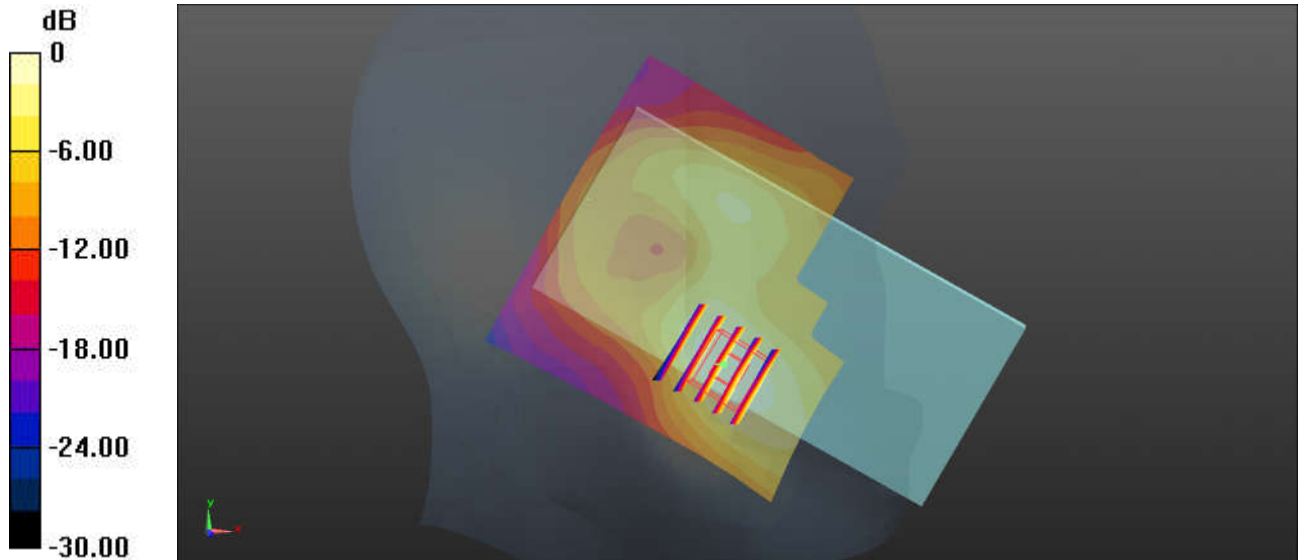
Communication System: UID 0, LTE-FDD (0); Frequency: 1905 MHz; Duty Cycle: 1:1
Medium: HSL_1900 Medium parameters used: $f = 1905$ MHz; $\sigma = 1.432$ S/m; $\epsilon_r = 38.705$; $\rho = 1000$ kg/m³
Ambient Temperature : 23.3 °C; Liquid Temperature : 22.9 °C

DASY5 Configuration:

- Probe: EX3DV4 - SN3935; ConvF(8.5, 8.5, 8.5); Calibrated: 2018.11.26
- Sensor-Surface: 1.4mm (Mechanical Surface Detection)
- Electronics: DAE4 Sn690; Calibrated: 2019.1.23
- Phantom: SAM2; Type: SAM; Serial: TP-1754
- Measurement SW: DASY52, Version 52.10 (1); SEMCAD X Version 14.6.11 (7439)

Ch26590/Area Scan (81x81x1): Interpolated grid: dx=1.500 mm, dy=1.500 mm
Maximum value of SAR (interpolated) = 0.279 W/kg

Ch26590/Zoom Scan (5x5x7)/Cube 0: Measurement grid: dx=8mm, dy=8mm, dz=5mm
Reference Value = 5.702 V/m; Power Drift = 0.02 dB
Peak SAR (extrapolated) = 0.335 W/kg
SAR(1 g) = 0.219 W/kg; SAR(10 g) = 0.134 W/kg
Maximum value of SAR (measured) = 0.259 W/kg



0 dB = 0.279 W/kg = -5.54 dBW/kg

16_LTE Band 30_10M_QPSK_1RB_0Offset_Left Cheek_0mm_Ch27710

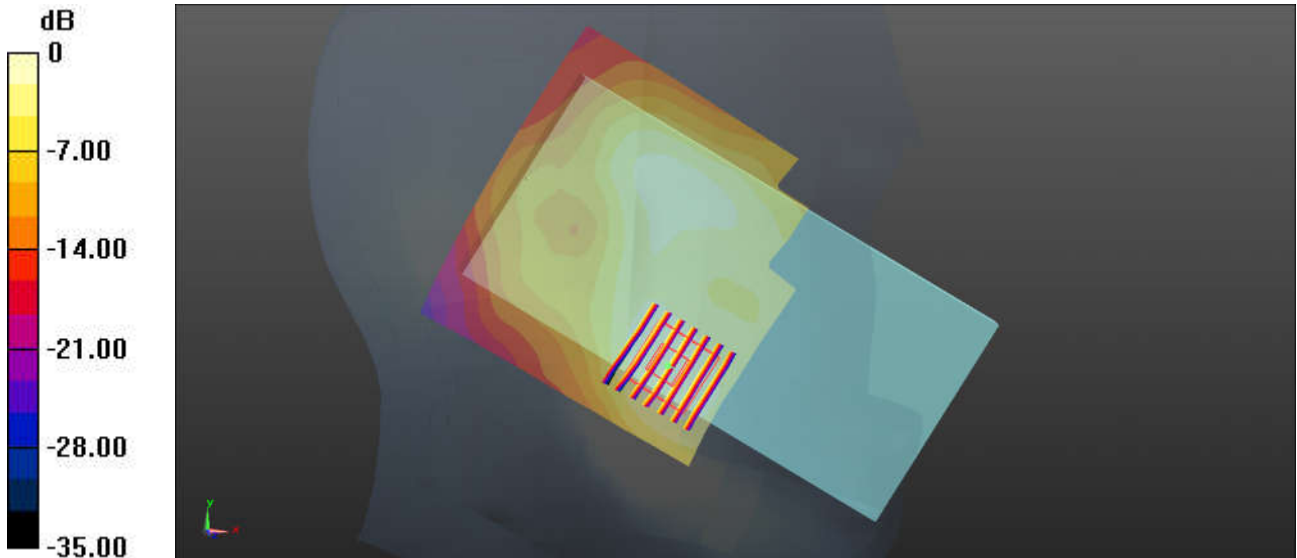
Communication System: UID 0, LTE-FDD (0); Frequency: 2310 MHz; Duty Cycle: 1:1
Medium: HSL_2300 Medium parameters used: $f = 2310$ MHz; $\sigma = 1.692$ S/m; $\epsilon_r = 38.988$; $\rho = 1000$ kg/m³
Ambient Temperature : 23.3 °C; Liquid Temperature : 22.7 °C

DASY5 Configuration:

- Probe: EX3DV4 - SN3935; ConvF(7.99, 7.99, 7.99); Calibrated: 2018.11.26
- Sensor-Surface: 1.4mm (Mechanical Surface Detection)
- Electronics: DAE4 Sn690; Calibrated: 2019.1.23
- Phantom: SAM1; Type: SAM; Serial: TP-1697
- Measurement SW: DASY52, Version 52.10 (1); SEMCAD X Version 14.6.11 (7439)

Ch27710/Area Scan (91x91x1): Interpolated grid: dx=1.200 mm, dy=1.200 mm
Maximum value of SAR (interpolated) = 0.255 W/kg

Ch27710/Zoom Scan (7x7x7)/Cube 0: Measurement grid: dx=5mm, dy=5mm, dz=5mm
Reference Value = 4.359 V/m; Power Drift = 0.03 dB
Peak SAR (extrapolated) = 0.336 W/kg
SAR(1 g) = 0.199 W/kg; SAR(10 g) = 0.114 W/kg
Maximum value of SAR (measured) = 0.241 W/kg



0 dB = 0.255 W/kg = -5.93 dBW/kg

17_LTE Band 7_20M QPSK_1RB_0Offset_Left Cheek_0mm_Ch21100

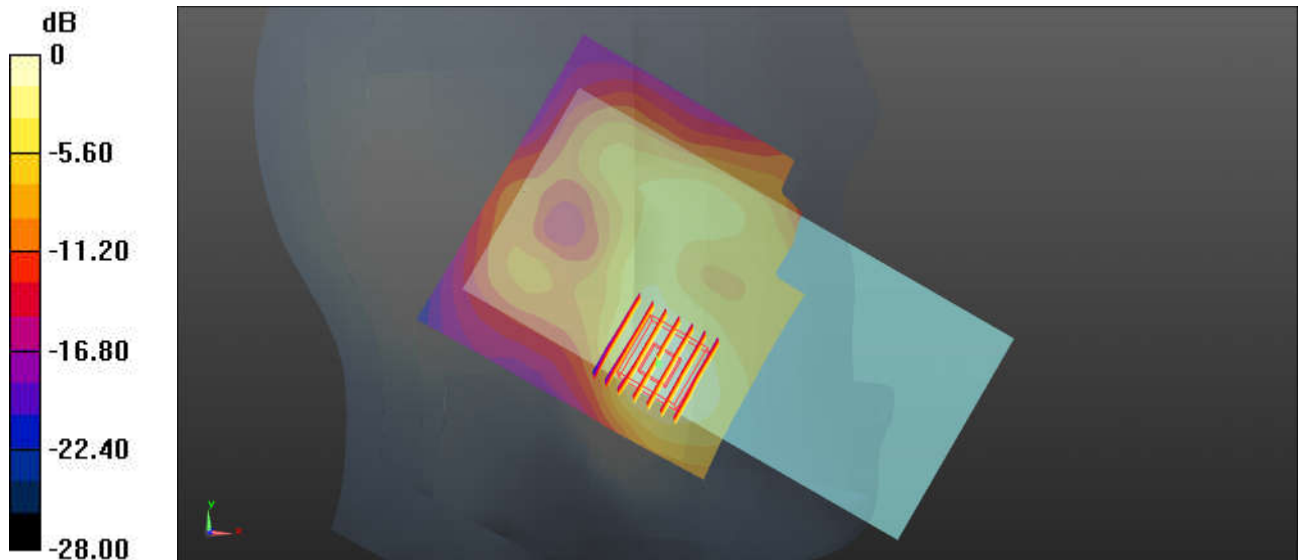
Communication System: UID 0, LTE-FDD (0); Frequency: 2535 MHz; Duty Cycle: 1:1
Medium: HSL_2600 Medium parameters used: $f = 2535$ MHz; $\sigma = 1.946$ S/m; $\epsilon_r = 38.035$; $\rho = 1000$ kg/m³
Ambient Temperature : 23.3 °C; Liquid Temperature : 22.6 °C

DASY5 Configuration:

- Probe: EX3DV4 - SN3935; ConvF(7.38, 7.38, 7.38); Calibrated: 2018.11.26
- Sensor-Surface: 1.4mm (Mechanical Surface Detection)
- Electronics: DAE4 Sn690; Calibrated: 2019.1.23
- Phantom: SAM1; Type: SAM; Serial: TP-1697
- Measurement SW: DASY52, Version 52.10 (1); SEMCAD X Version 14.6.11 (7439)

Ch21100/Area Scan (91x91x1): Interpolated grid: dx=1.200 mm, dy=1.200 mm
Maximum value of SAR (interpolated) = 0.618 W/kg

Ch21100/Zoom Scan (7x7x7)/Cube 0: Measurement grid: dx=5mm, dy=5mm, dz=5mm
Reference Value = 1.599 V/m; Power Drift = 0.04 dB
Peak SAR (extrapolated) = 0.823 W/kg
SAR(1 g) = 0.462 W/kg; SAR(10 g) = 0.246 W/kg
Maximum value of SAR (measured) = 0.580 W/kg



0 dB = 0.618 W/kg = -2.09 dBW/kg

18_LTE Band 41_20M QPSK_1RB_0Offset_Left Cheek_0mm_Ch40185

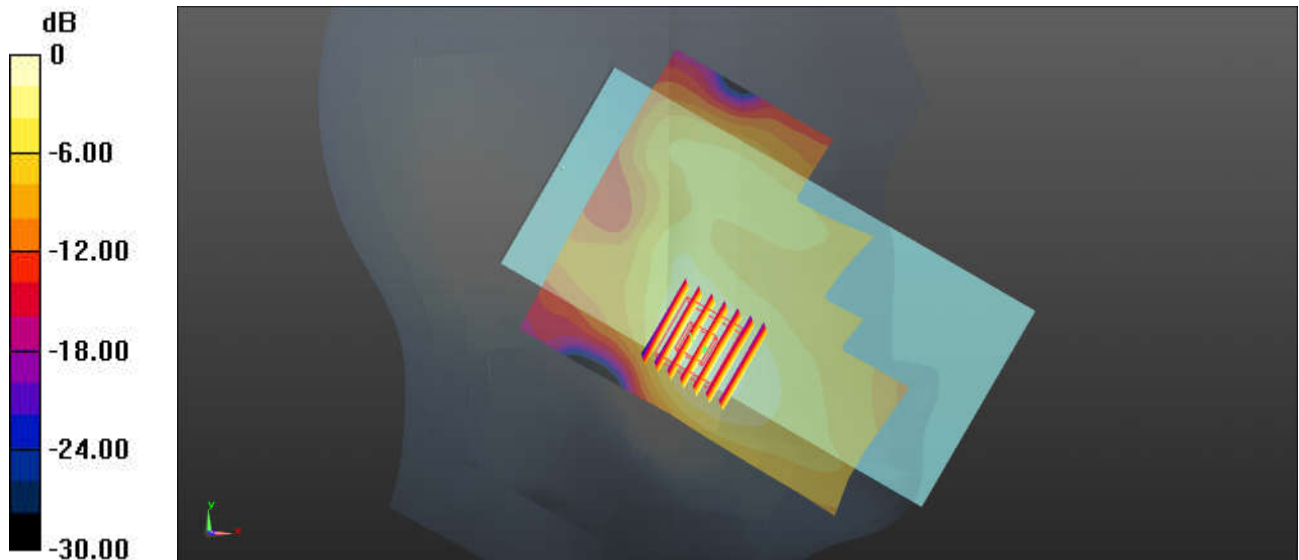
Communication System: UID 0, LTE-TDD (0); Frequency: 2549.5 MHz; Duty Cycle: 1:1.59
Medium: HSL_2600 Medium parameters used: $f = 2549.5$ MHz; $\sigma = 1.965$ S/m; $\epsilon_r = 37.975$; $\rho = 1000$ kg/m³
Ambient Temperature : 23.3 °C; Liquid Temperature : 22.6 °C

DASY5 Configuration:

- Probe: EX3DV4 - SN3935; ConvF(7.38, 7.38, 7.38); Calibrated: 2018.11.26
- Sensor-Surface: 1.4mm (Mechanical Surface Detection)
- Electronics: DAE4 Sn690; Calibrated: 2019.1.23
- Phantom: SAM1; Type: SAM; Serial: TP-1697
- Measurement SW: DASY52, Version 52.10 (1); SEMCAD X Version 14.6.11 (7439)

Ch40185/Area Scan (91x101x1): Interpolated grid: dx=1.200 mm, dy=1.200 mm
Maximum value of SAR (interpolated) = 0.282 W/kg

Ch40185/Zoom Scan (7x7x7)/Cube 0: Measurement grid: dx=5mm, dy=5mm, dz=5mm
Reference Value = 3.582 V/m; Power Drift = -0.03 dB
Peak SAR (extrapolated) = 0.393 W/kg
SAR(1 g) = 0.216 W/kg; SAR(10 g) = 0.113 W/kg
Maximum value of SAR (measured) = 0.325 W/kg



0 dB = 0.282 W/kg = -5.50 dBW/kg

19_LTE Band 41(HPUE)_20M QPSK_1RB_0Offset_Left Cheek_0mm_Ch40185

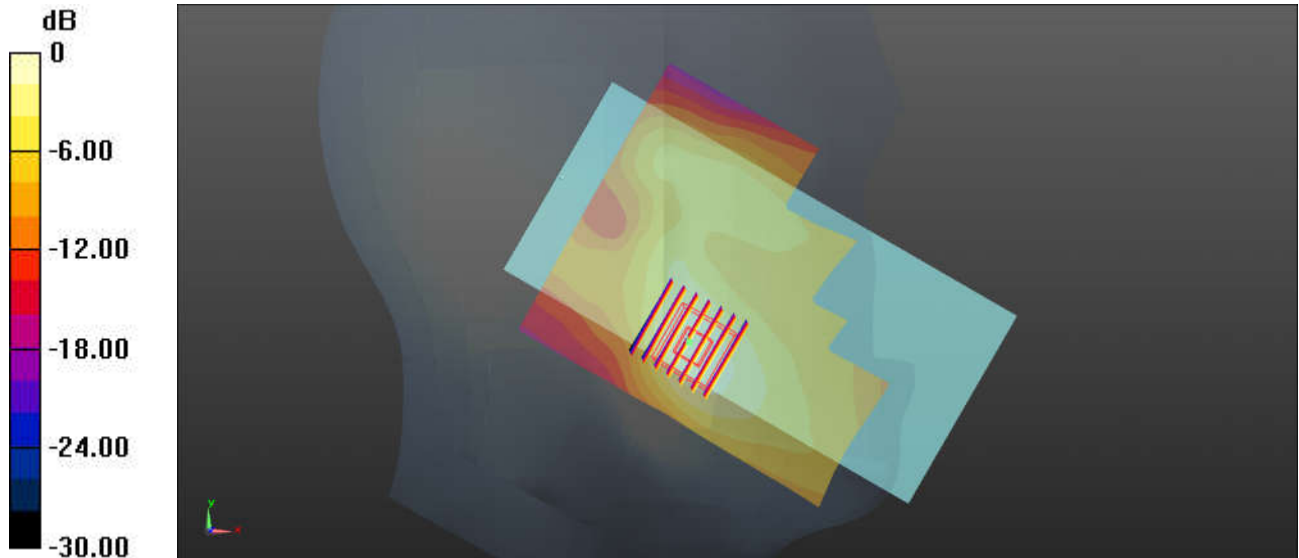
Communication System: UID 0, LTE-TDD (0); Frequency: 2549.5 MHz; Duty Cycle: 1:2.331
Medium: HSL_2600 Medium parameters used: $f = 2549.5$ MHz; $\sigma = 1.965$ S/m; $\epsilon_r = 37.975$; $\rho = 1000$ kg/m³
Ambient Temperature : 23.3 °C; Liquid Temperature : 22.6 °C

DASY5 Configuration:

- Probe: EX3DV4 - SN3935; ConvF(7.38, 7.38, 7.38); Calibrated: 2018.11.26
- Sensor-Surface: 1.4mm (Mechanical Surface Detection)
- Electronics: DAE4 Sn690; Calibrated: 2019.1.23
- Phantom: SAM1; Type: SAM; Serial: TP-1697
- Measurement SW: DASY52, Version 52.10 (1); SEMCAD X Version 14.6.11 (7439)

Ch40185/Area Scan (91x101x1): Interpolated grid: dx=1.200 mm, dy=1.200 mm
Maximum value of SAR (interpolated) = 0.551 W/kg

Ch40185/Zoom Scan (7x7x7)/Cube 0: Measurement grid: dx=5mm, dy=5mm, dz=5mm
Reference Value = 4.860 V/m; Power Drift = -0.07 dB
Peak SAR (extrapolated) = 0.642 W/kg
SAR(1 g) = 0.356 W/kg; SAR(10 g) = 0.188 W/kg
Maximum value of SAR (measured) = 0.539 W/kg



0 dB = 0.551 W/kg = -2.59 dBW/kg

20_WLAN 2.4GHz_802.11b 1Mbps_Left Cheek_0mm_Ch1

Communication System: UID 0, 802.11b (0); Frequency: 2412 MHz; Duty Cycle: 1:1
Medium: HSL_2450 Medium parameters used: $f = 2412$ MHz; $\sigma = 1.739$ S/m; $\epsilon_r = 40.765$; $\rho = 1000$ kg/m³
Ambient Temperature : 23.2 °C ; Liquid Temperature : 22.8 °C

DASY5 Configuration:

- Probe: EX3DV4 - SN3857; ConvF(7.5, 7.5, 7.5); Calibrated: 2019.5.27
- Sensor-Surface: 1.4mm (Mechanical Surface Detection)
- Electronics: DAE4 Sn690; Calibrated: 2019.1.23
- Phantom: SAM1; Type: SAM; Serial: TP-1697
- Measurement SW: DASY52, Version 52.10 (1); SEMCAD X Version 14.6.11 (7439)

Ch1/Area Scan (91x71x1): Interpolated grid: dx=1.200 mm, dy=1.200 mm

Maximum value of SAR (interpolated) = 1.64 W/kg

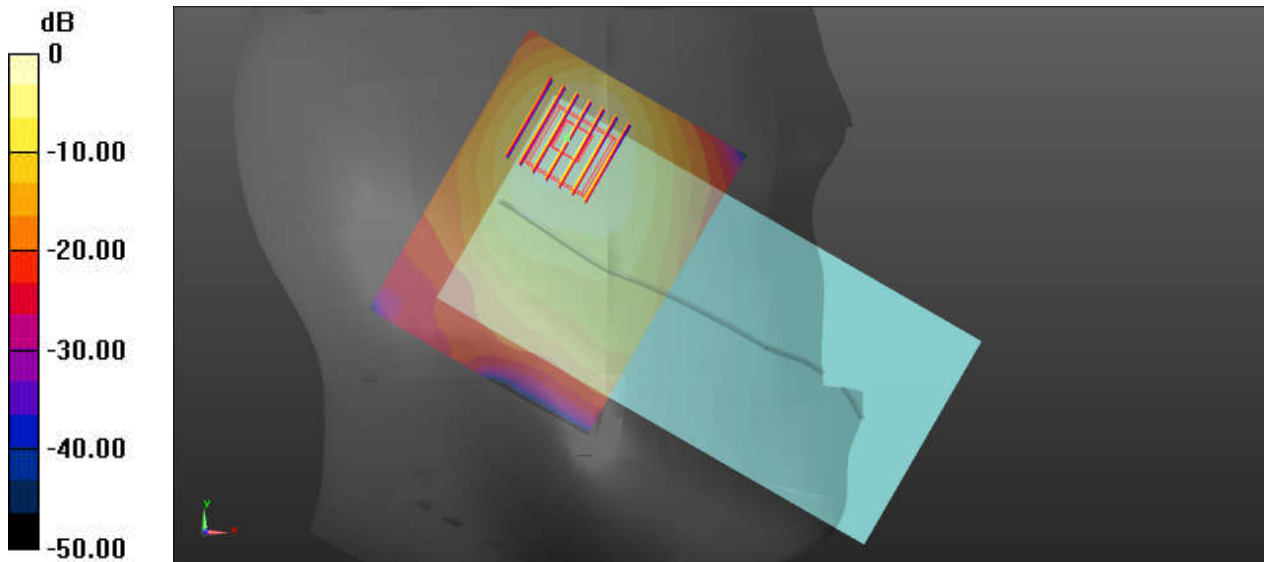
Ch1/Zoom Scan (7x7x7)/Cube 0: Measurement grid: dx=5mm, dy=5mm, dz=5mm

Reference Value = 15.49 V/m; Power Drift = -0.14 dB

Peak SAR (extrapolated) = 1.74 W/kg

SAR(1 g) = 0.959 W/kg; SAR(10 g) = 0.484 W/kg

Maximum value of SAR (measured) = 1.45 W/kg



0 dB = 1.64 W/kg = 2.15 dBW/kg

21_WLAN5.3GHz_802.11n-HT40 MCS0_Left Cheek_0mm_Ant 1_Ch54

Communication System: UID 0, 802.11n (0); Frequency: 5270 MHz; Duty Cycle: 1:1.038
 Medium: HSL_5000 Medium parameters used: $f = 5270$ MHz; $\sigma = 4.623$ S/m; $\epsilon_r = 36.391$; $\rho = 1000$ kg/m³
 Ambient Temperature : 23.2 °C; Liquid Temperature : 22.8 °C

DASY5 Configuration:

- Probe: EX3DV4 - SN3857; ConvF(5.19, 5.19, 5.19); Calibrated: 2019.5.27
- Sensor-Surface: 1.4mm (Mechanical Surface Detection)
- Electronics: DAE4 Sn690; Calibrated: 2019.1.23
- Phantom: SAM1; Type: SAM; Serial: TP-1697
- Measurement SW: DASY52, Version 52.10 (1); SEMCAD X Version 14.6.11 (7439)

Ch54/Area Scan (101x81x1): Interpolated grid: dx=1.000 mm, dy=1.000 mm

Maximum value of SAR (interpolated) = 1.39 W/kg

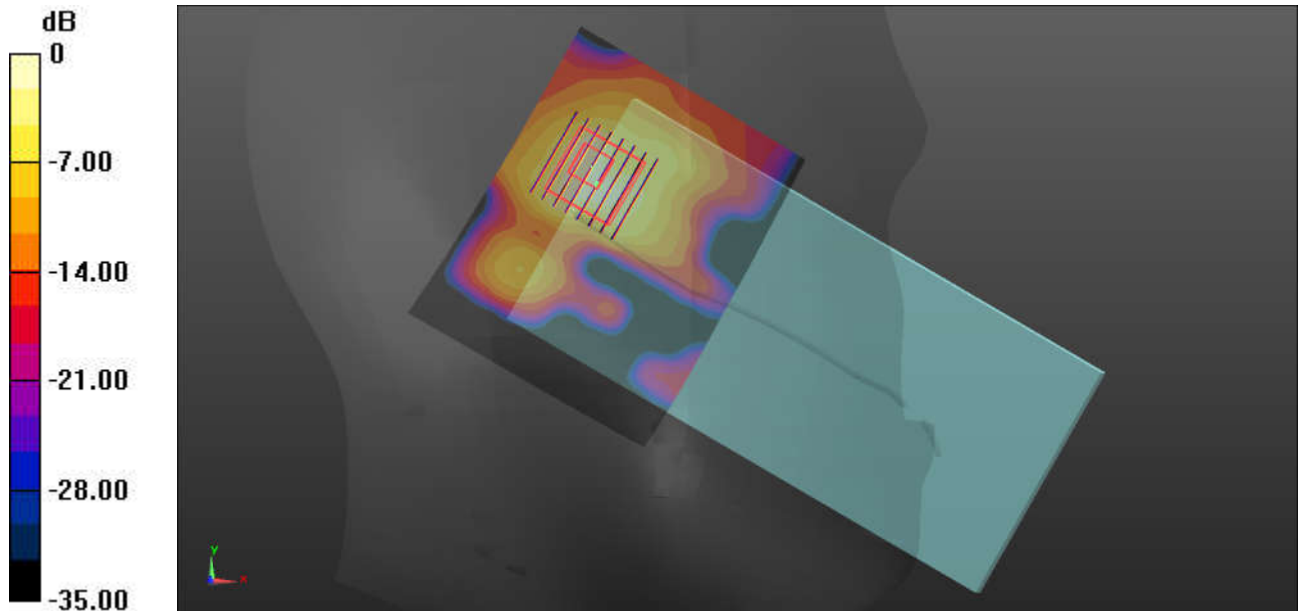
Ch54/Zoom Scan (8x8x7)/Cube 0: Measurement grid: dx=4mm, dy=4mm, dz=1.4mm

Reference Value = 8.107 V/m; Power Drift = -0.06 dB

Peak SAR (extrapolated) = 3.14 W/kg

SAR(1 g) = 0.743 W/kg; SAR(10 g) = 0.228 W/kg

Maximum value of SAR (measured) = 1.97 W/kg



0 dB = 1.39 W/kg = 1.43 dBW/kg

22_WLAN5.5GHz_802.11n-HT40 MCS0_Left Cheek_0mm_Ant 1_Ch102

Communication System: UID 0, 802.11n (0); Frequency: 5510 MHz;Duty Cycle: 1:1.038
Medium: HSL_5000 Medium parameters used: f = 5510 MHz; $\sigma = 4.883$ S/m; $\epsilon_r = 35.979$; $\rho = 1000$ kg/m³
Ambient Temperature : 23.3 °C ; Liquid Temperature : 22.7 °C

DASY5 Configuration:

- Probe: EX3DV4 - SN3857; ConvF(4.92, 4.92, 4.92); Calibrated: 2019.5.27
- Sensor-Surface: 1.4mm (Mechanical Surface Detection)
- Electronics: DAE4 Sn690; Calibrated: 2019.1.23
- Phantom: SAM1; Type: SAM; Serial: TP-1697
- Measurement SW: DASY52, Version 52.10 (1); SEMCAD X Version 14.6.11 (7439)

Ch102/Area Scan (101x81x1): Interpolated grid: dx=1.000 mm, dy=1.000 mm

Maximum value of SAR (interpolated) = 2.20 W/kg

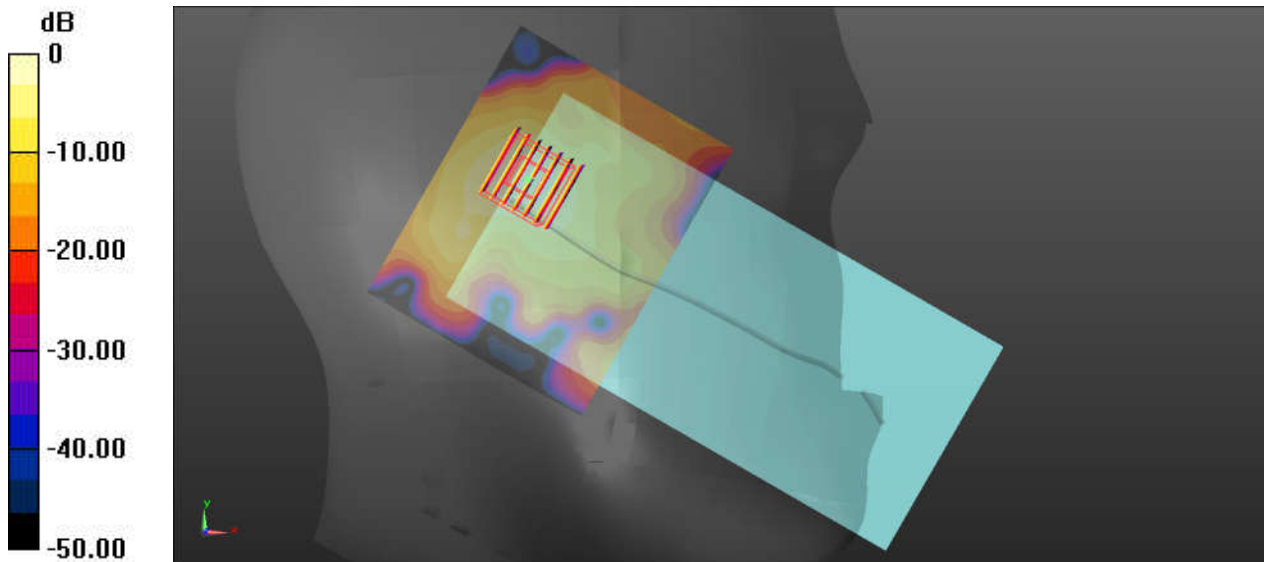
Ch102/Zoom Scan (7x7x7)/Cube 0: Measurement grid: dx=4mm, dy=4mm, dz=1.4mm

Reference Value = 15.95 V/m; Power Drift = -0.01 dB

Peak SAR (extrapolated) = 4.02 W/kg

SAR(1 g) = 0.958 W/kg; SAR(10 g) = 0.302 W/kg

Maximum value of SAR (measured) = 2.41 W/kg



0 dB = 2.20 W/kg = 3.42 dBW/kg

23_WLAN5.8GHz_802.11n-HT40 MCS0_Right Cheek_0mm_Ant 1_Ch151

Communication System: UID 0, 802.11n (0); Frequency: 5755 MHz;Duty Cycle: 1:1.038
Medium: HSL_5000 Medium parameters used: $f = 5755$ MHz; $\sigma = 5.169$ S/m; $\epsilon_r = 35.557$; $\rho = 1000$ kg/m³
Ambient Temperature : 23.3 °C ; Liquid Temperature : 22.8 °C

DASY5 Configuration:

- Probe: EX3DV4 - SN3857; ConvF(5.17, 5.17, 5.17); Calibrated: 2019.5.27
- Sensor-Surface: 1.4mm (Mechanical Surface Detection)
- Electronics: DAE4 Sn690; Calibrated: 2019.1.23
- Phantom: SAM1; Type: SAM; Serial: TP-1697
- Measurement SW: DASY52, Version 52.10 (1); SEMCAD X Version 14.6.11 (7439)

Ch151/Area Scan (101x81x1): Interpolated grid: dx=1.000 mm, dy=1.000 mm

Maximum value of SAR (interpolated) = 1.49 W/kg

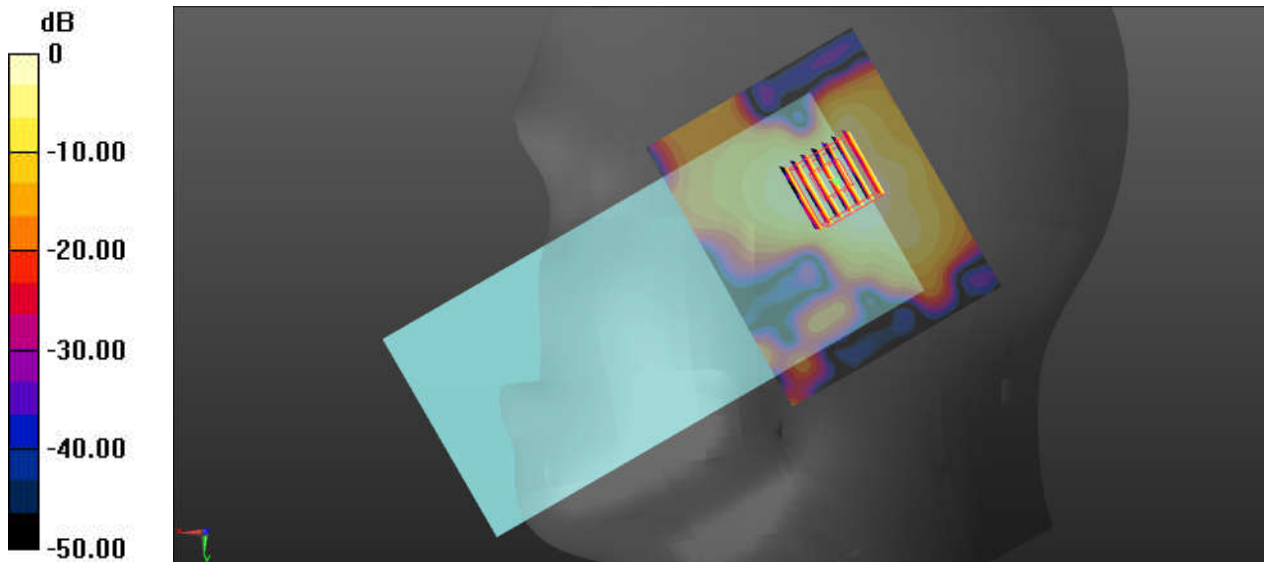
Ch151/Zoom Scan (7x7x7)/Cube 0: Measurement grid: dx=4mm, dy=4mm, dz=1.4mm

Reference Value = 13.33 V/m; Power Drift = -0.04 dB

Peak SAR (extrapolated) = 2.06 W/kg

SAR(1 g) = 0.501 W/kg; SAR(10 g) = 0.189 W/kg

Maximum value of SAR (measured) = 1.22 W/kg



0 dB = 1.49 W/kg = 1.73 dBW/kg

24_ Bluetooth_1Mbps_Left Cheek_0mm_Ch0

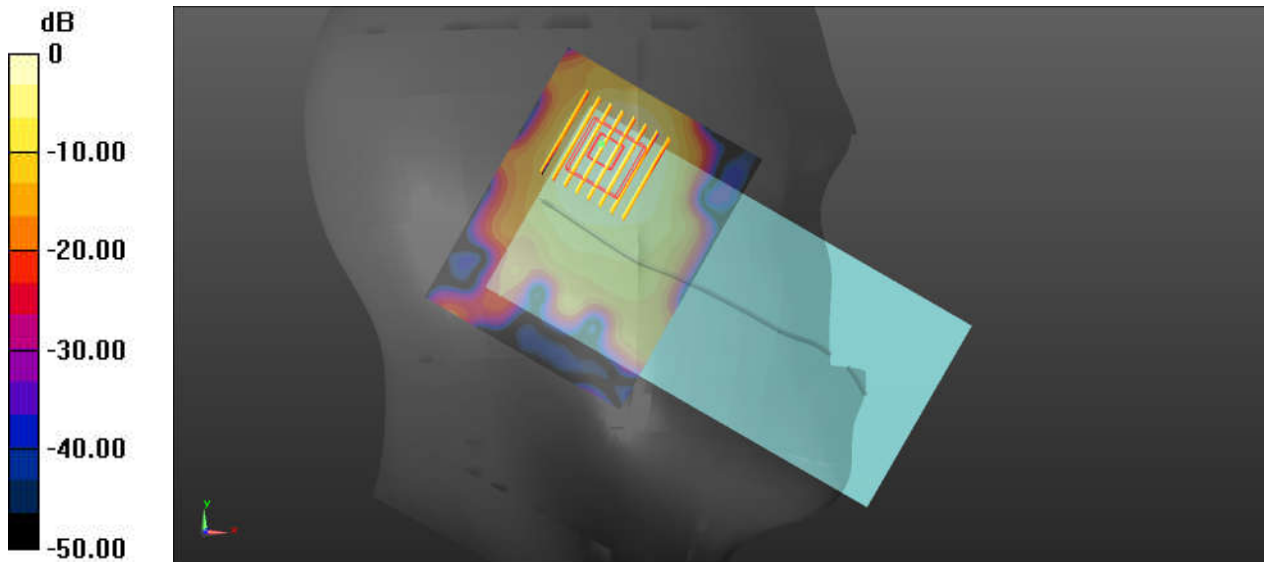
Communication System: UID 0, Bluetooth (0); Frequency: 2402 MHz; Duty Cycle: 1:1.305
Medium: HSL_2450 Medium parameters used: $f = 2402$ MHz; $\sigma = 1.726$ S/m; $\epsilon_r = 40.782$; $\rho = 1000$ kg/m³
Ambient Temperature : 23.2 °C ; Liquid Temperature : 22.8 °C

DASY5 Configuration:

- Probe: EX3DV4 - SN3857; ConvF(7.5, 7.5, 7.5); Calibrated: 2019.5.27
- Sensor-Surface: 1.4mm (Mechanical Surface Detection)
- Electronics: DAE4 Sn690; Calibrated: 2019.1.23
- Phantom: SAM1; Type: SAM; Serial: TP-1697
- Measurement SW: DASY52, Version 52.10 (1); SEMCAD X Version 14.6.11 (7439)

Ch00/Area Scan (91x71x1): Interpolated grid: dx=1.200 mm, dy=1.200 mm
Maximum value of SAR (interpolated) = 0.125 W/kg

Ch00/Zoom Scan (8x8x7)/Cube 0: Measurement grid: dx=5mm, dy=5mm, dz=5mm
Reference Value = 4.217 V/m; Power Drift = -0.08 dB
Peak SAR (extrapolated) = 0.132 W/kg
SAR(1 g) = 0.073 W/kg; SAR(10 g) = 0.036 W/kg
Maximum value of SAR (measured) = 0.111 W/kg



0 dB = 0.125 W/kg = -9.03 dBW/kg

25_GSM850_GPRS 4 Tx slots_Back_5mm_Ch251

Communication System: UID 0, GSM850-4UP (0); Frequency: 848.8 MHz; Duty Cycle: 1:2.08
 Medium: HSL_850 Medium parameters used: $f = 848.8$ MHz; $\sigma = 0.943$ S/m; $\epsilon_r = 42.081$; $\rho = 1000$ kg/m³

Ambient Temperature : 23.2 °C; Liquid Temperature : 22.9 °C

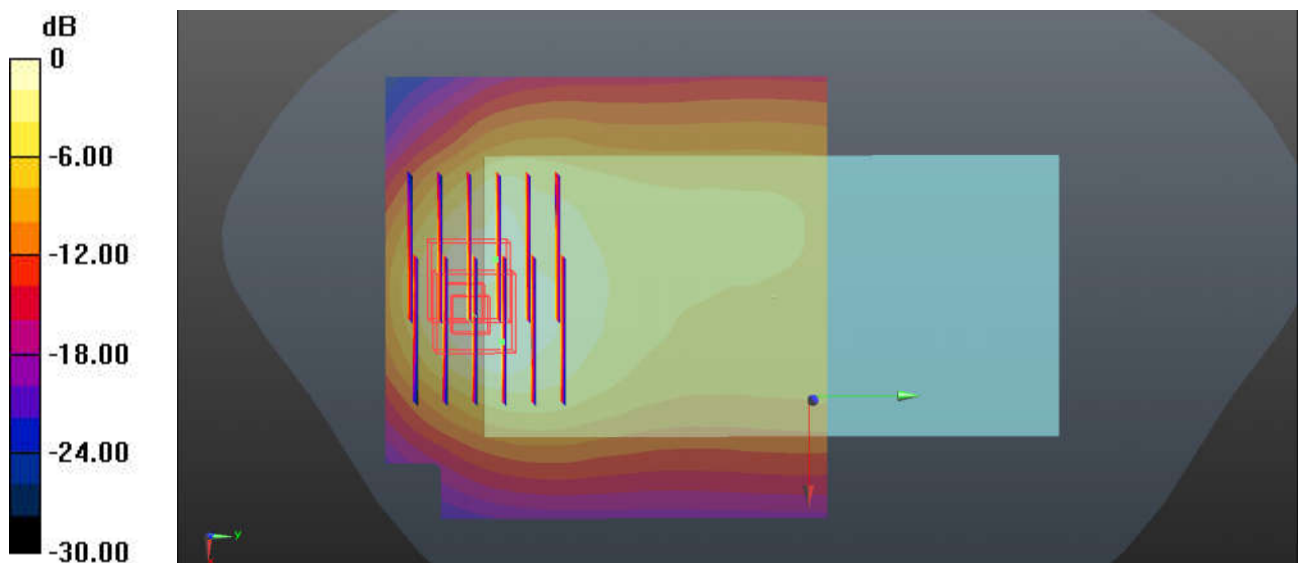
DASY5 Configuration:

- Probe: EX3DV4 - SN3935; ConvF(10.48, 10.48, 10.48); Calibrated: 2018.11.26
- Sensor-Surface: 1.4mm (Mechanical Surface Detection)
- Electronics: DAE4 Sn690; Calibrated: 2019.1.23
- Phantom: SAM2; Type: SAM; Serial: TP-1754
- Measurement SW: DASY52, Version 52.10 (1); SEMCAD X Version 14.6.11 (7439)

Ch251/Area Scan (81x81x1): Interpolated grid: dx=1.500 mm, dy=1.500 mm
 Maximum value of SAR (interpolated) = 1.71 W/kg

Ch251/Zoom Scan (6x6x7)/Cube 0: Measurement grid: dx=8mm, dy=8mm, dz=5mm
 Reference Value = 21.94 V/m; Power Drift = -0.19 dB
 Peak SAR (extrapolated) = 4.28 W/kg
SAR(1 g) = 1.15 W/kg; SAR(10 g) = 0.604 W/kg
 Maximum value of SAR (measured) = 1.99 W/kg

Ch251/Zoom Scan (6x6x7)/Cube 1: Measurement grid: dx=8mm, dy=8mm, dz=5mm
 Reference Value = 21.94 V/m; Power Drift = -0.19 dB
 Peak SAR (extrapolated) = 2.47 W/kg
SAR(1 g) = 1.12 W/kg; SAR(10 g) = 0.575 W/kg
 Maximum value of SAR (measured) = 1.94 W/kg



0 dB = 1.71 W/kg = 2.33 dBW/kg

26_GSM1900_GPRS 3 Tx slots_Bottom Side_5mm_Ch810

Communication System: UID 0, PCS-3UP (0); Frequency: 1909.8 MHz; Duty Cycle: 1:2.77
Medium: HSL_1900 Medium parameters used: $f = 1909.8$ MHz; $\sigma = 1.438$ S/m; $\epsilon_r = 38.682$; $\rho = 1000$ kg/m³
Ambient Temperature : 23.3 °C; Liquid Temperature : 22.9 °C

DASY5 Configuration:

- Probe: EX3DV4 - SN3935; ConvF(8.5, 8.5, 8.5); Calibrated: 2018.11.26
- Sensor-Surface: 1.4mm (Mechanical Surface Detection)
- Electronics: DAE4 Sn690; Calibrated: 2019.1.23
- Phantom: SAM2; Type: SAM; Serial: TP-1754
- Measurement SW: DASY52, Version 52.10 (1); SEMCAD X Version 14.6.11 (7439)

Ch810/Area Scan (41x81x1): Interpolated grid: dx=1.500 mm, dy=1.500 mm

Maximum value of SAR (interpolated) = 1.52 W/kg

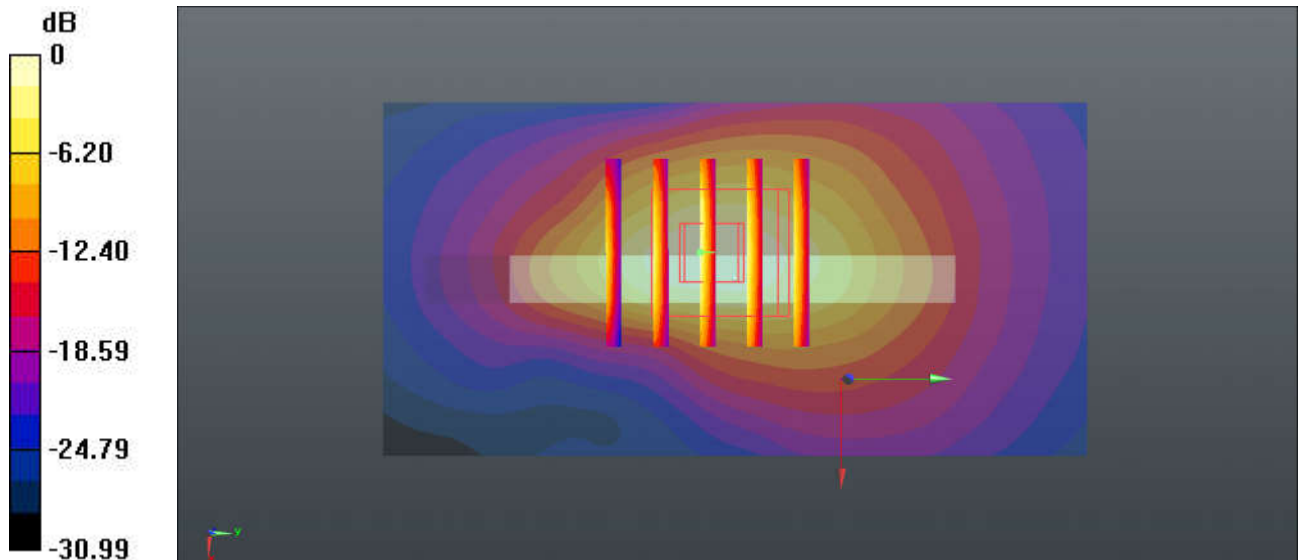
Ch810/Zoom Scan (5x5x7)/Cube 0: Measurement grid: dx=8mm, dy=8mm, dz=5mm

Reference Value = 1.029 V/m; Power Drift = 0.01 dB

Peak SAR (extrapolated) = 1.94 W/kg

SAR(1 g) = 1.05 W/kg; SAR(10 g) = 0.482 W/kg

Maximum value of SAR (measured) = 1.37 W/kg



0 dB = 1.52 W/kg = 1.82 dBW/kg

27_WCDMA V_RMC 12.2Kbps_Back_5mm_Ch4233

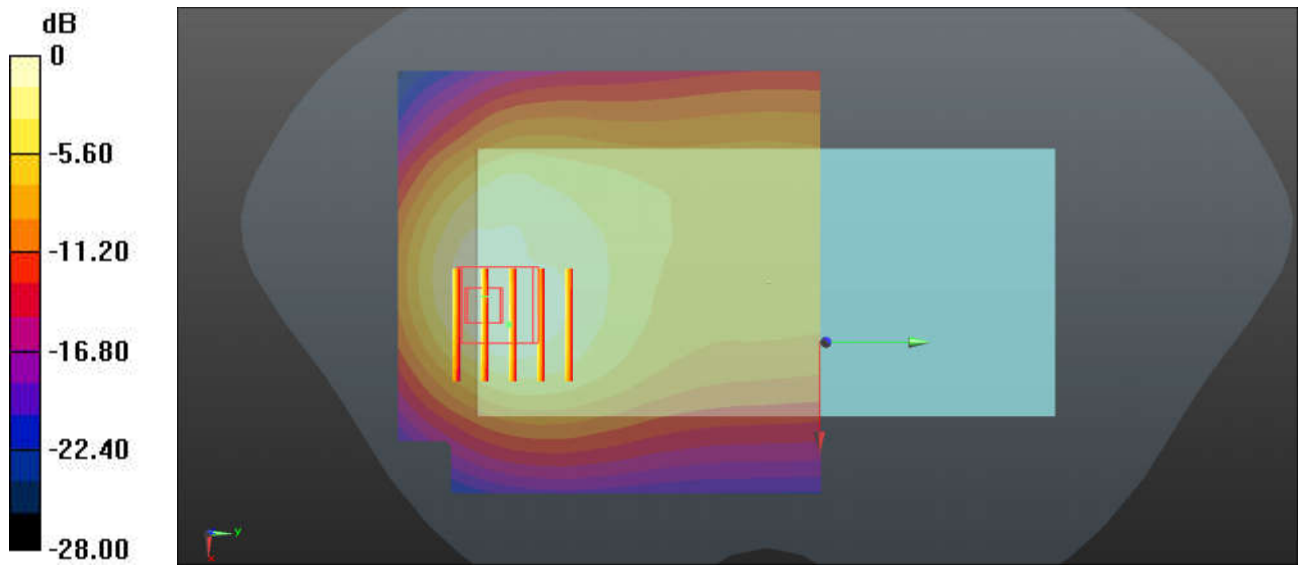
Communication System: UID 0, WCDMA (0); Frequency: 846.6 MHz; Duty Cycle: 1:1
Medium: HSL_850 Medium parameters used: $f = 846.6$ MHz; $\sigma = 0.941$ S/m; $\epsilon_r = 42.1$; $\rho = 1000$ kg/m³
Ambient Temperature : 23.2 °C ; Liquid Temperature : 22.9 °C

DASY5 Configuration:

- Probe: EX3DV4 - SN3935; ConvF(10.48, 10.48, 10.48); Calibrated: 2018.11.26
- Sensor-Surface: 1.4mm (Mechanical Surface Detection)
- Electronics: DAE4 Sn690; Calibrated: 2019.1.23
- Phantom: SAM2; Type: SAM; Serial: TP-1754
- Measurement SW: DASY52, Version 52.10 (1); SEMCAD X Version 14.6.11 (7439)

Ch4233/Area Scan (81x81x1): Interpolated grid: dx=1.500 mm, dy=1.500 mm
Maximum value of SAR (interpolated) = 1.46 W/kg

Ch4233/Zoom Scan (5x5x7)/Cube 0: Measurement grid: dx=8mm, dy=8mm, dz=5mm
Reference Value = 4.253 V/m; Power Drift = 0.08 dB
Peak SAR (extrapolated) = 2.40 W/kg
SAR(1 g) = 1.16 W/kg; SAR(10 g) = 0.631 W/kg
Maximum value of SAR (measured) = 1.53 W/kg



0 dB = 1.46 W/kg = 1.64 dBW/kg

28_WCDMA IV_RMC 12.2Kbps_Bottom Side_5mm_Ch1513

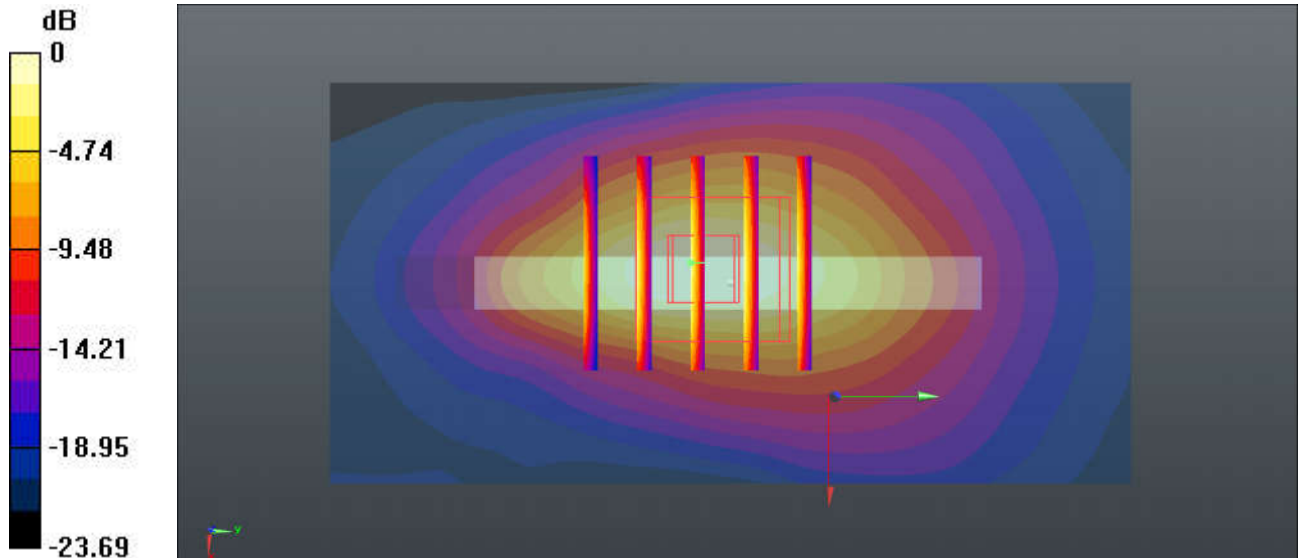
Communication System: UID 0, WCDMA (0); Frequency: 1752.6 MHz; Duty Cycle: 1:1
Medium: HSL_1750 Medium parameters used: $f = 1752.6$ MHz; $\sigma = 1.385$ S/m; $\epsilon_r = 39.691$; $\rho = 1000$ kg/m³
Ambient Temperature : 23.2 °C; Liquid Temperature : 22.9 °C

DASY5 Configuration:

- Probe: EX3DV4 - SN3935; ConvF(8.91, 8.91, 8.91); Calibrated: 2018.11.26
- Sensor-Surface: 1.4mm (Mechanical Surface Detection)
- Electronics: DAE4 Sn690; Calibrated: 2019.1.23
- Phantom: SAM2; Type: SAM; Serial: TP-1754
- Measurement SW: DASY52, Version 52.10 (1); SEMCAD X Version 14.6.11 (7439)

Ch1513/Area Scan (41x81x1): Interpolated grid: dx=1.500 mm, dy=1.500 mm
Maximum value of SAR (interpolated) = 1.58 W/kg

Ch1513/Zoom Scan (5x5x7)/Cube 0: Measurement grid: dx=8mm, dy=8mm, dz=5mm
Reference Value = 33.06 V/m; Power Drift = 0.05 dB
Peak SAR (extrapolated) = 2.17 W/kg
SAR(1 g) = 1.13 W/kg; SAR(10 g) = 0.548 W/kg
Maximum value of SAR (measured) = 1.44 W/kg



0 dB = 1.58 W/kg = 1.99 dBW/kg

29_WCDMA II_RMC 12.2Kbps_Bottom Side_5mm_Ch9538

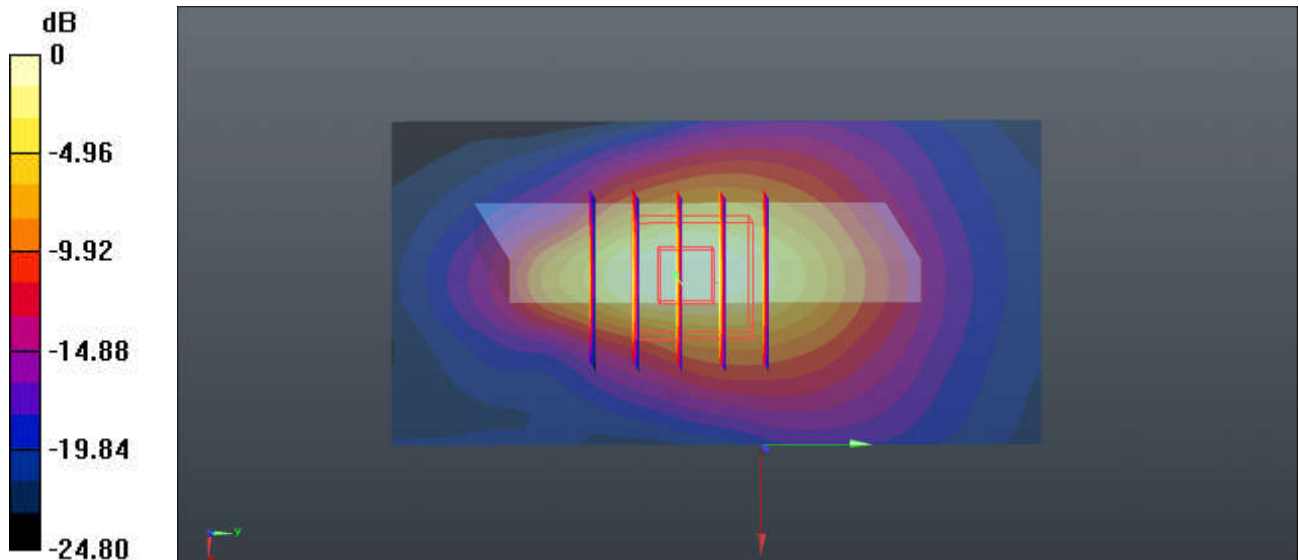
Communication System: UID 0, WCDMA (0); Frequency: 1907.6 MHz; Duty Cycle: 1:1
Medium: HSL_1900 Medium parameters used: $f = 1907.6$ MHz; $\sigma = 1.435$ S/m; $\epsilon_r = 38.692$; $\rho = 1000$ kg/m³
Ambient Temperature : 23.3 °C; Liquid Temperature : 22.9 °C

DASY5 Configuration:

- Probe: EX3DV4 - SN3935; ConvF(8.5, 8.5, 8.5); Calibrated: 2018.11.26
- Sensor-Surface: 1.4mm (Mechanical Surface Detection)
- Electronics: DAE4 Sn690; Calibrated: 2019.1.23
- Phantom: SAM2; Type: SAM; Serial: TP-1754
- Measurement SW: DASY52, Version 52.10 (1); SEMCAD X Version 14.6.11 (7439)

Ch9538/Area Scan (41x81x1): Interpolated grid: dx=1.500 mm, dy=1.500 mm
Maximum value of SAR (interpolated) = 1.70 W/kg

Ch9538/Zoom Scan (5x5x7)/Cube 0: Measurement grid: dx=8mm, dy=8mm, dz=5mm
Reference Value = 33.38 V/m; Power Drift = 0.03 dB
Peak SAR (extrapolated) = 2.33 W/kg
SAR(1 g) = 1.16 W/kg; SAR(10 g) = 0.546 W/kg
Maximum value of SAR (measured) = 1.54 W/kg



0 dB = 1.70 W/kg = 2.30 dBW/kg

30_CDMA2000 BC10_RTAP 153.6Kbps_Back_5mm_Ch476

Communication System: UID 0, CDMA (0); Frequency: 817.9 MHz; Duty Cycle: 1:1
 Medium: HSL_850 Medium parameters used: $f = 817.9$ MHz; $\sigma = 0.911$ S/m; $\epsilon_r = 42.421$; $\rho = 1000$ kg/m³
 Ambient Temperature : 23.2 °C; Liquid Temperature : 22.9 °C

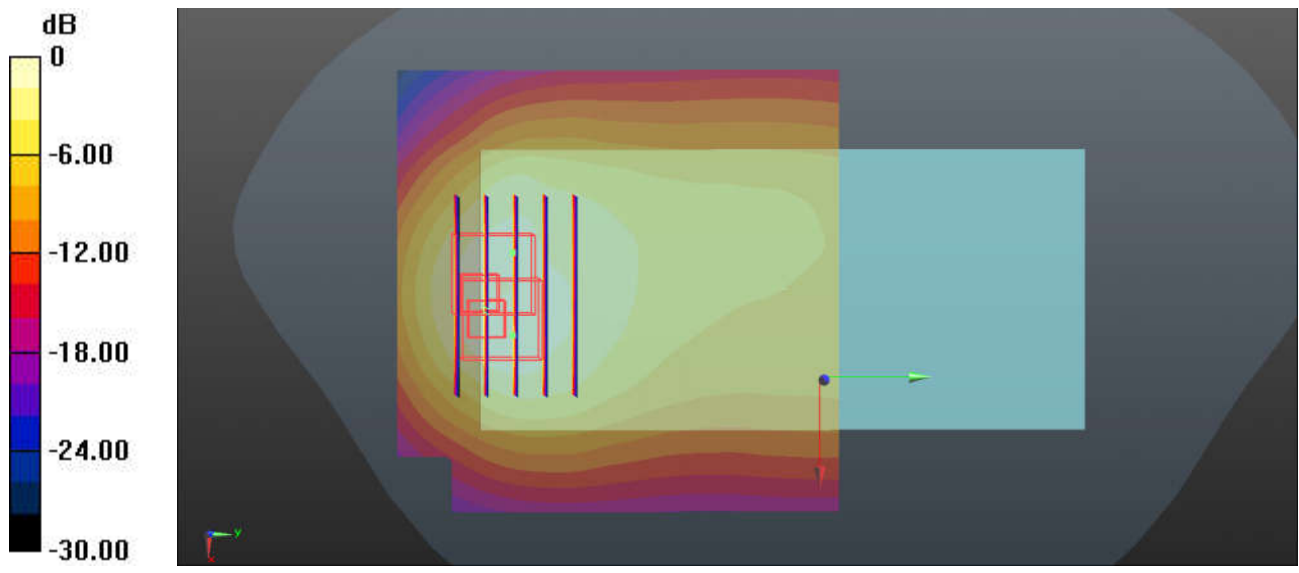
DASY5 Configuration:

- Probe: EX3DV4 - SN3935; ConvF(10.48, 10.48, 10.48); Calibrated: 2018.11.26
- Sensor-Surface: 1.4mm (Mechanical Surface Detection)
- Electronics: DAE4 Sn690; Calibrated: 2019.1.23
- Phantom: SAM2; Type: SAM; Serial: TP-1754
- Measurement SW: DASY52, Version 52.10 (1); SEMCAD X Version 14.6.11 (7439)

Ch476/Area Scan (81x81x1): Interpolated grid: dx=1.500 mm, dy=1.500 mm
 Maximum value of SAR (interpolated) = 1.41 W/kg

Ch476/Zoom Scan (5x5x7)/Cube 0: Measurement grid: dx=8mm, dy=8mm, dz=5mm
 Reference Value = 20.06 V/m; Power Drift = -0.04 dB
 Peak SAR (extrapolated) = 2.37 W/kg
SAR(1 g) = 1.11 W/kg; SAR(10 g) = 0.601 W/kg
 Maximum value of SAR (measured) = 1.47 W/kg

Ch476/Zoom Scan (5x5x7)/Cube 1: Measurement grid: dx=8mm, dy=8mm, dz=5mm
 Reference Value = 20.06 V/m; Power Drift = -0.04 dB
 Peak SAR (extrapolated) = 2.33 W/kg
SAR(1 g) = 1.07 W/kg; SAR(10 g) = 0.561 W/kg
 Maximum value of SAR (measured) = 1.47 W/kg



0 dB = 1.41 W/kg = 1.49 dBW/kg

31_CDMA2000 BC0_RTAP 153.6Kbps_Back_5mm_Ch1013

Communication System: UID 0, CDMA (0); Frequency: 824.7 MHz; Duty Cycle: 1:1
 Medium: HSL_850 Medium parameters used: $f = 824.7 \text{ MHz}$; $\sigma = 0.919 \text{ S/m}$; $\epsilon_r = 42.331$; $\rho = 1000 \text{ kg/m}^3$
 Ambient Temperature : $23.2 \text{ }^\circ\text{C}$; Liquid Temperature : $22.9 \text{ }^\circ\text{C}$

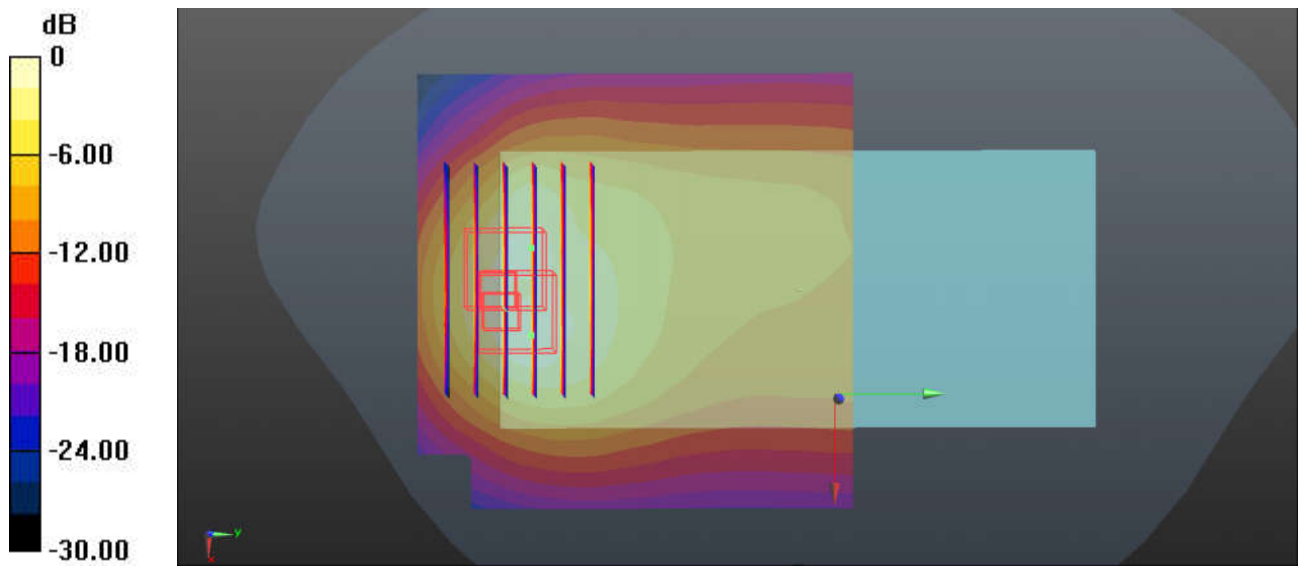
DASY5 Configuration:

- Probe: EX3DV4 - SN3935; ConvF(10.48, 10.48, 10.48); Calibrated: 2018.11.26
- Sensor-Surface: 1.4mm (Mechanical Surface Detection)
- Electronics: DAE4 Sn690; Calibrated: 2019.1.23
- Phantom: SAM2; Type: SAM; Serial: TP-1754
- Measurement SW: DASY52, Version 52.10 (1); SEMCAD X Version 14.6.11 (7439)

Ch1013/Area Scan (81x81x1): Interpolated grid: $dx=1.500 \text{ mm}$, $dy=1.500 \text{ mm}$
 Maximum value of SAR (interpolated) = 2.12 W/kg

Ch1013/Zoom Scan (6x6x7)/Cube 0: Measurement grid: $dx=8\text{mm}$, $dy=8\text{mm}$, $dz=5\text{mm}$
 Reference Value = 20.51 V/m ; Power Drift = 0.07 dB
 Peak SAR (extrapolated) = 2.65 W/kg
SAR(1 g) = 1.18 W/kg ; SAR(10 g) = 0.628 W/kg
 Maximum value of SAR (measured) = 2.10 W/kg

Ch1013/Zoom Scan (6x6x7)/Cube 1: Measurement grid: $dx=8\text{mm}$, $dy=8\text{mm}$, $dz=5\text{mm}$
 Reference Value = 20.51 V/m ; Power Drift = 0.07 dB
 Peak SAR (extrapolated) = 2.65 W/kg
SAR(1 g) = 1.15 W/kg ; SAR(10 g) = 0.589 W/kg
 Maximum value of SAR (measured) = 2.09 W/kg



0 dB = 2.12 W/kg = 3.26 dBW/kg

32_CDMA2000 BC1_RTAP 153.6Kbps_Bottom Side_5mm_Ch1175

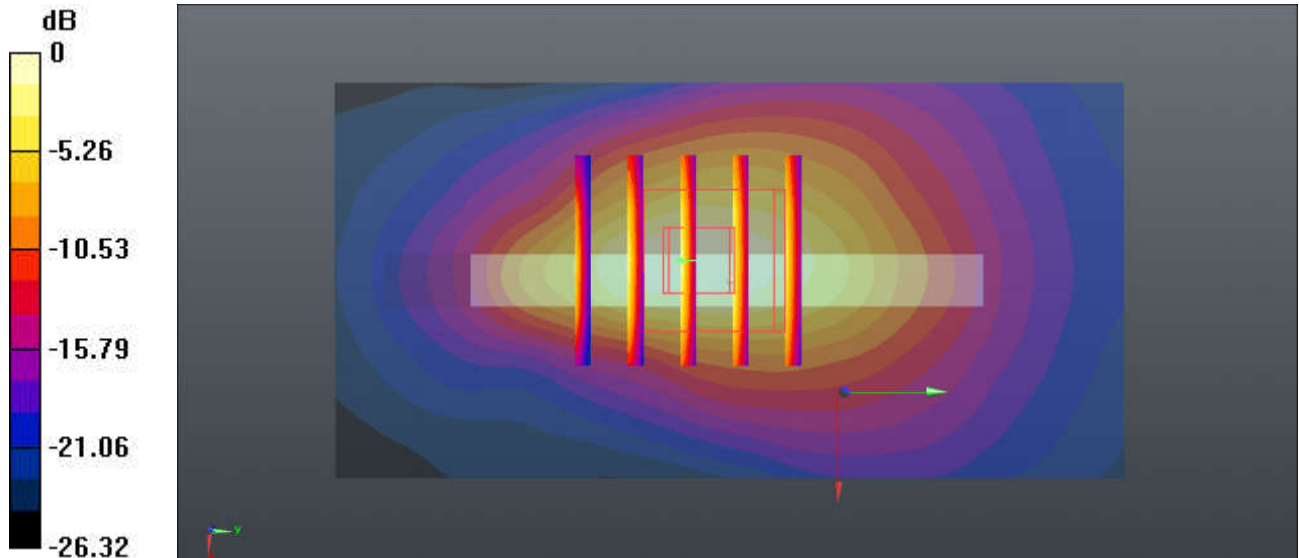
Communication System: UID 0, CDMA (0); Frequency: 1908.75 MHz; Duty Cycle: 1:1
Medium: HSL_1900 Medium parameters used: $f = 1908.75$ MHz; $\sigma = 1.436$ S/m; $\epsilon_r = 38.687$; $\rho = 1000$ kg/m³
Ambient Temperature : 23.3 °C; Liquid Temperature : 22.9 °C

DASY5 Configuration:

- Probe: EX3DV4 - SN3935; ConvF(8.5, 8.5, 8.5); Calibrated: 2018.11.26
- Sensor-Surface: 1.4mm (Mechanical Surface Detection)
- Electronics: DAE4 Sn690; Calibrated: 2019.1.23
- Phantom: SAM2; Type: SAM; Serial: TP-1754
- Measurement SW: DASY52, Version 52.10 (1); SEMCAD X Version 14.6.11 (7439)

Ch1175/Area Scan (41x81x1): Interpolated grid: $dx=1.500$ mm, $dy=1.500$ mm
Maximum value of SAR (interpolated) = 1.51 W/kg

Ch1175/Zoom Scan (5x5x7)/Cube 0: Measurement grid: $dx=8$ mm, $dy=8$ mm, $dz=5$ mm
Reference Value = 2.149 V/m; Power Drift = 0.01 dB
Peak SAR (extrapolated) = 2.06 W/kg
SAR(1 g) = 1.03 W/kg; SAR(10 g) = 0.483 W/kg
Maximum value of SAR (measured) = 1.35 W/kg



0 dB = 1.51 W/kg = 1.79 dBW/kg

33_LTE Band 71_20M QPSK_1RB_0Offset_Back_5mm_Ch133322

Communication System: UID 0, LTE-FDD (0); Frequency: 683 MHz; Duty Cycle: 1:1

Medium: HSL_750 Medium parameters used: $f = 683 \text{ MHz}$; $\sigma = 0.846 \text{ S/m}$; $\epsilon_r = 42.691$; $\rho = 1000 \text{ kg/m}^3$

Ambient Temperature : $23.2 \text{ }^\circ\text{C}$; Liquid Temperature : $22.7 \text{ }^\circ\text{C}$

DASY5 Configuration:

- Probe: EX3DV4 - SN3935; ConvF(10.83, 10.83, 10.83); Calibrated: 2018.11.26
- Sensor-Surface: 1.4mm (Mechanical Surface Detection)
- Electronics: DAE4 Sn690; Calibrated: 2019.1.23
- Phantom: SAM2; Type: SAM; Serial: TP-1754
- Measurement SW: DASY52, Version 52.10 (1); SEMCAD X Version 14.6.11 (7439)

Ch133322/Area Scan (81x81x1): Interpolated grid: $dx=1.500 \text{ mm}$, $dy=1.500 \text{ mm}$

Maximum value of SAR (interpolated) = 0.947 W/kg

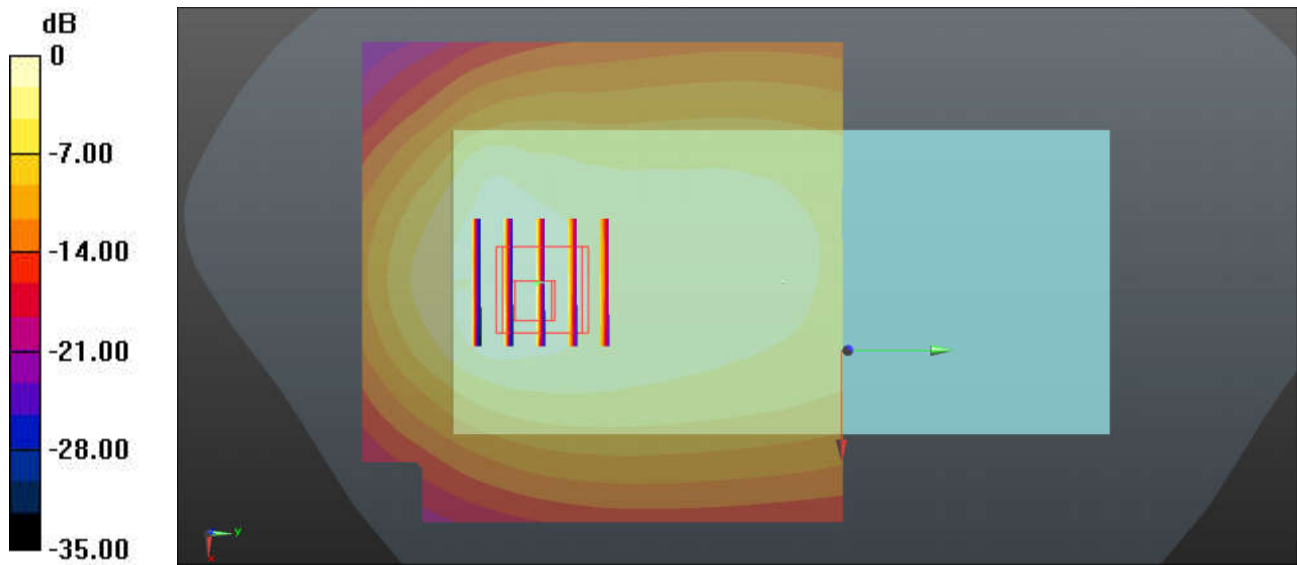
Ch133322/Zoom Scan (5x5x7)/Cube 0: Measurement grid: $dx=8\text{mm}$, $dy=8\text{mm}$, $dz=5\text{mm}$

Reference Value = 21.11 V/m ; Power Drift = -0.05 dB

Peak SAR (extrapolated) = 1.49 W/kg

SAR(1 g) = 0.757 W/kg ; SAR(10 g) = 0.430 W/kg

Maximum value of SAR (measured) = 0.987 W/kg



0 dB = 0.947 W/kg = -0.24 dBW/kg

34_LTE Band 12_10M QPSK_1RB_0Offset_Back_5mm_Ch23095

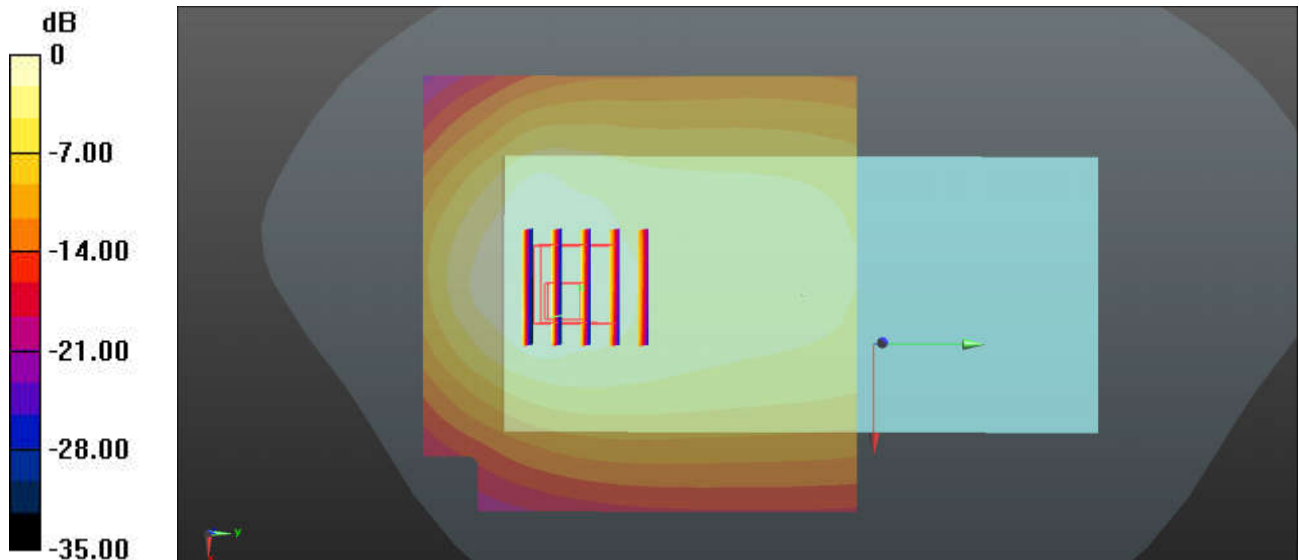
Communication System: UID 0, LTE-FDD (0); Frequency: 707.5 MHz; Duty Cycle: 1:1
Medium: HSL_750 Medium parameters used: $f = 707.5$ MHz; $\sigma = 0.866$ S/m; $\epsilon_r = 42.37$; $\rho = 1000$ kg/m³
Ambient Temperature : 23.2 °C; Liquid Temperature : 22.7 °C

DASY5 Configuration:

- Probe: EX3DV4 - SN3935; ConvF(10.83, 10.83, 10.83); Calibrated: 2018.11.26
- Sensor-Surface: 1.4mm (Mechanical Surface Detection)
- Electronics: DAE4 Sn690; Calibrated: 2019.1.23
- Phantom: SAM2; Type: SAM; Serial: TP-1754
- Measurement SW: DASY52, Version 52.10 (1); SEMCAD X Version 14.6.11 (7439)

Ch23095/Area Scan (81x81x1): Interpolated grid: dx=1.500 mm, dy=1.500 mm
Maximum value of SAR (interpolated) = 0.831 W/kg

Ch23095/Zoom Scan (5x5x7)/Cube 0: Measurement grid: dx=8mm, dy=8mm, dz=5mm
Reference Value = 19.81 V/m; Power Drift = -0.03 dB
Peak SAR (extrapolated) = 1.53 W/kg
SAR(1 g) = 0.732 W/kg; SAR(10 g) = 0.425 W/kg
Maximum value of SAR (measured) = 0.924 W/kg



0 dB = 0.831 W/kg = -0.80 dBW/kg

35_LTE Band 13_10M QPSK_1RB_0Offset_Back_5mm_Ch23230

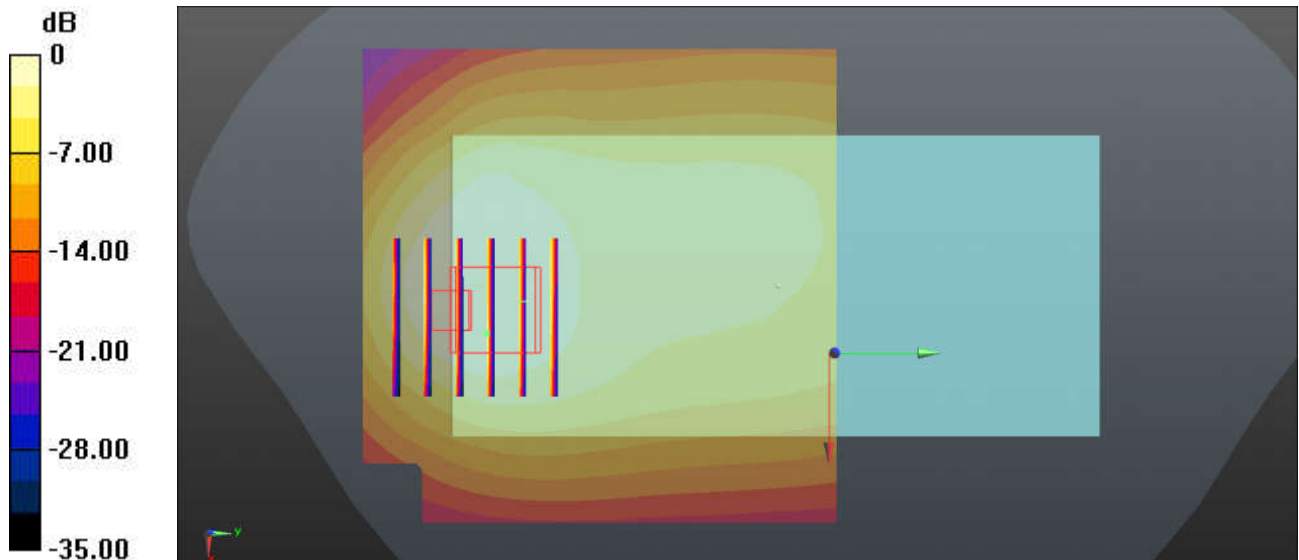
Communication System: UID 0, LTE-FDD (0); Frequency: 782 MHz; Duty Cycle: 1:1
Medium: HSL_750 Medium parameters used: $f = 782 \text{ MHz}$; $\sigma = 0.929 \text{ S/m}$; $\epsilon_r = 41.366$; $\rho = 1000 \text{ kg/m}^3$
Ambient Temperature : $23.2 \text{ }^\circ\text{C}$; Liquid Temperature : $22.7 \text{ }^\circ\text{C}$

DASY5 Configuration:

- Probe: EX3DV4 - SN3935; ConvF(10.83, 10.83, 10.83); Calibrated: 2018.11.26
- Sensor-Surface: 1.4mm (Mechanical Surface Detection)
- Electronics: DAE4 Sn690; Calibrated: 2019.1.23
- Phantom: SAM2; Type: SAM; Serial: TP-1754
- Measurement SW: DASY52, Version 52.10 (1); SEMCAD X Version 14.6.11 (7439)

Ch23230/Area Scan (81x81x1): Interpolated grid: $dx=1.500 \text{ mm}$, $dy=1.500 \text{ mm}$
Maximum value of SAR (interpolated) = 0.917 W/kg

Ch23230/Zoom Scan (6x6x7)/Cube 0: Measurement grid: $dx=8\text{mm}$, $dy=8\text{mm}$, $dz=5\text{mm}$
Reference Value = 19.04 V/m ; Power Drift = 0.02 dB
Peak SAR (extrapolated) = 1.56 W/kg
SAR(1 g) = 0.727 W/kg ; SAR(10 g) = 0.415 W/kg
Maximum value of SAR (measured) = 0.924 W/kg



0 dB = 0.917 W/kg = -0.38 dBW/kg

36_LTE Band 14_10M QPSK_1RB_0Offset_Back_5mm_Ch23330

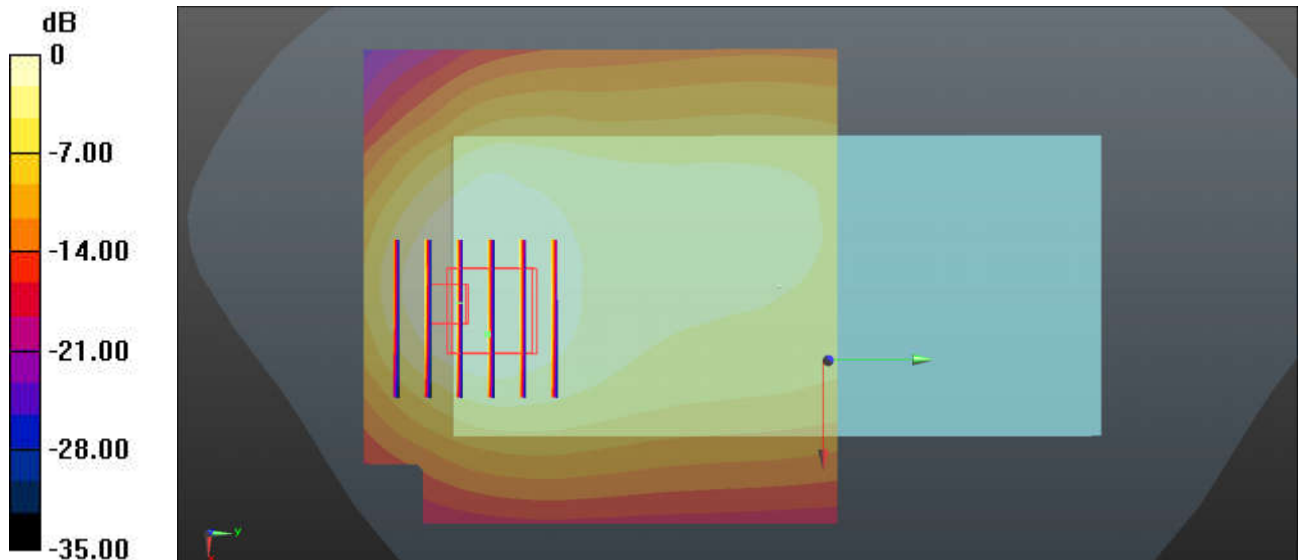
Communication System: UID 0, LTE-FDD (0); Frequency: 793 MHz; Duty Cycle: 1:1
Medium: HSL_750 Medium parameters used: $f = 793$ MHz; $\sigma = 0.941$ S/m; $\epsilon_r = 41.254$; $\rho = 1000$ kg/m³
Ambient Temperature : 23.2 °C; Liquid Temperature : 22.7 °C

DASY5 Configuration:

- Probe: EX3DV4 - SN3935; ConvF(10.83, 10.83, 10.83); Calibrated: 2018.11.26
- Sensor-Surface: 1.4mm (Mechanical Surface Detection)
- Electronics: DAE4 Sn690; Calibrated: 2019.1.23
- Phantom: SAM2; Type: SAM; Serial: TP-1754
- Measurement SW: DASY52, Version 52.10 (1); SEMCAD X Version 14.6.11 (7439)

Ch23330/Area Scan (81x81x1): Interpolated grid: dx=1.500 mm, dy=1.500 mm
Maximum value of SAR (interpolated) = 1.05 W/kg

Ch23330/Zoom Scan (6x6x7)/Cube 0: Measurement grid: dx=8mm, dy=8mm, dz=5mm
Reference Value = 20.04 V/m; Power Drift = 0.03 dB
Peak SAR (extrapolated) = 1.81 W/kg
SAR(1 g) = 0.857 W/kg; SAR(10 g) = 0.479 W/kg
Maximum value of SAR (measured) = 1.09 W/kg



0 dB = 1.05 W/kg = 0.21 dBW/kg

37_LTE Band 26_15M QPSK_1RB_0Offset_Back_5mm_Ch26865

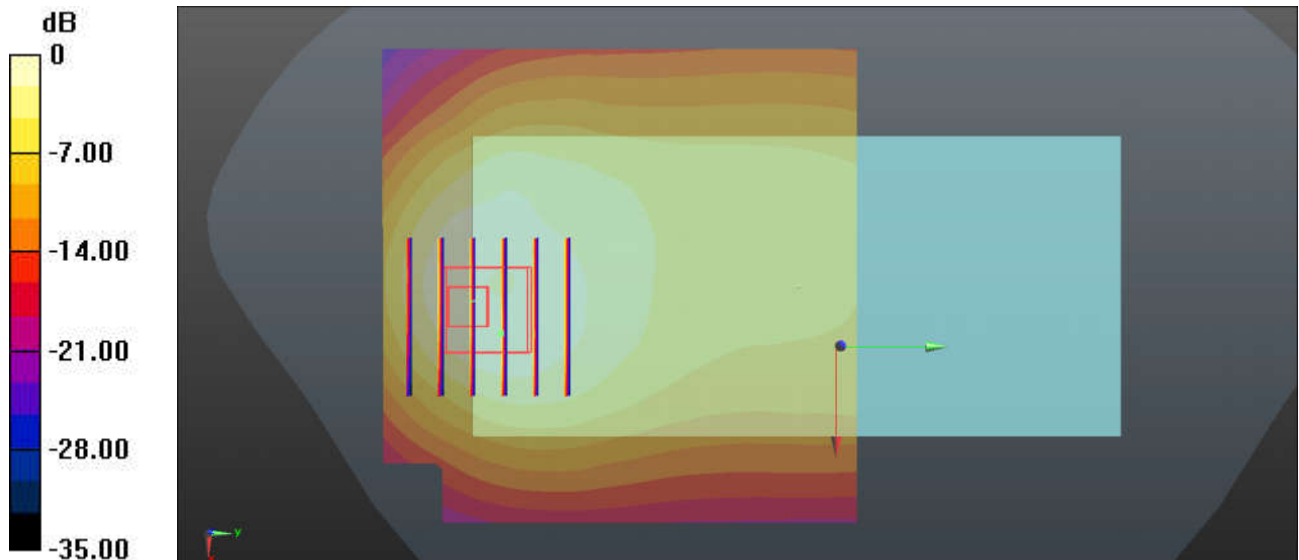
Communication System: UID 0, LTE-FDD (0); Frequency: 831.5 MHz; Duty Cycle: 1:1
Medium: HSL_850 Medium parameters used: $f = 831.5$ MHz; $\sigma = 0.925$ S/m; $\epsilon_r = 42.258$; $\rho = 1000$ kg/m³
Ambient Temperature : 23.2 °C; Liquid Temperature : 22.9 °C

DASY5 Configuration:

- Probe: EX3DV4 - SN3935; ConvF(10.48, 10.48, 10.48); Calibrated: 2018.11.26
- Sensor-Surface: 1.4mm (Mechanical Surface Detection)
- Electronics: DAE4 Sn690; Calibrated: 2019.1.23
- Phantom: SAM2; Type: SAM; Serial: TP-1754
- Measurement SW: DASY52, Version 52.10 (1); SEMCAD X Version 14.6.11 (7439)

Ch26865/Area Scan (81x81x1): Interpolated grid: dx=1.500 mm, dy=1.500 mm
Maximum value of SAR (interpolated) = 1.43 W/kg

Ch26865/Zoom Scan (6x6x7)/Cube 0: Measurement grid: dx=8mm, dy=8mm, dz=5mm
Reference Value = 19.08 V/m; Power Drift = 0.03 dB
Peak SAR (extrapolated) = 2.43 W/kg
SAR(1 g) = 1.18 W/kg; SAR(10 g) = 0.637 W/kg
Maximum value of SAR (measured) = 1.56 W/kg



0 dB = 1.43 W/kg = 1.55 dBW/kg

38_LTE Band 66_20M QPSK_1RB_0Offset_Bottom Side_5mm_Ch132072

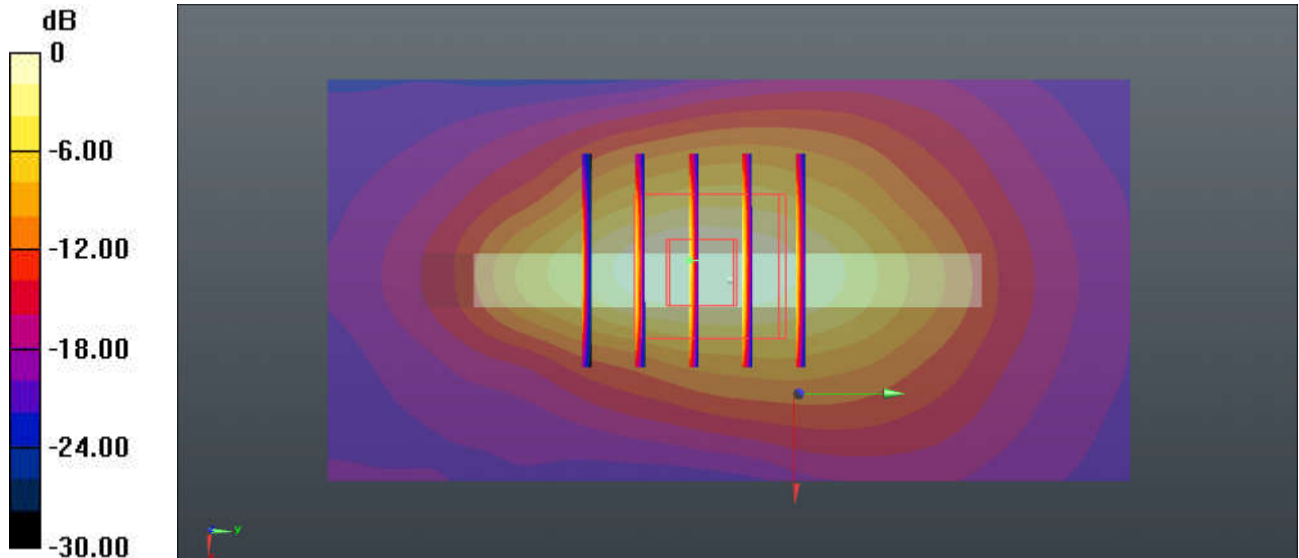
Communication System: UID 0, LTE-FDD (0); Frequency: 1720 MHz; Duty Cycle: 1:1
Medium: HSL_1750 Medium parameters used: $f = 1720$ MHz; $\sigma = 1.349$ S/m; $\epsilon_r = 39.854$; $\rho = 1000$ kg/m³
Ambient Temperature : 23.2 °C; Liquid Temperature : 22.9 °C

DASY5 Configuration:

- Probe: EX3DV4 - SN3935; ConvF(8.91, 8.91, 8.91); Calibrated: 2018.11.26
- Sensor-Surface: 1.4mm (Mechanical Surface Detection)
- Electronics: DAE4 Sn690; Calibrated: 2019.1.23
- Phantom: SAM2; Type: SAM; Serial: TP-1754
- Measurement SW: DASY52, Version 52.10 (1); SEMCAD X Version 14.6.11 (7439)

Ch132072/Area Scan (41x81x1): Interpolated grid: dx=1.500 mm, dy=1.500 mm
Maximum value of SAR (interpolated) = 1.50 W/kg

Ch132072/Zoom Scan (5x5x7)/Cube 0: Measurement grid: dx=8mm, dy=8mm, dz=5mm
Reference Value = 32.79 V/m; Power Drift = 0.03 dB
Peak SAR (extrapolated) = 2.05 W/kg
SAR(1 g) = 1.08 W/kg; SAR(10 g) = 0.529 W/kg
Maximum value of SAR (measured) = 1.37 W/kg



0 dB = 1.50 W/kg = 1.76 dBW/kg

39_LTE Band 25_20M QPSK_1RB_0Offset_Bottom Side_5mm_Ch26590

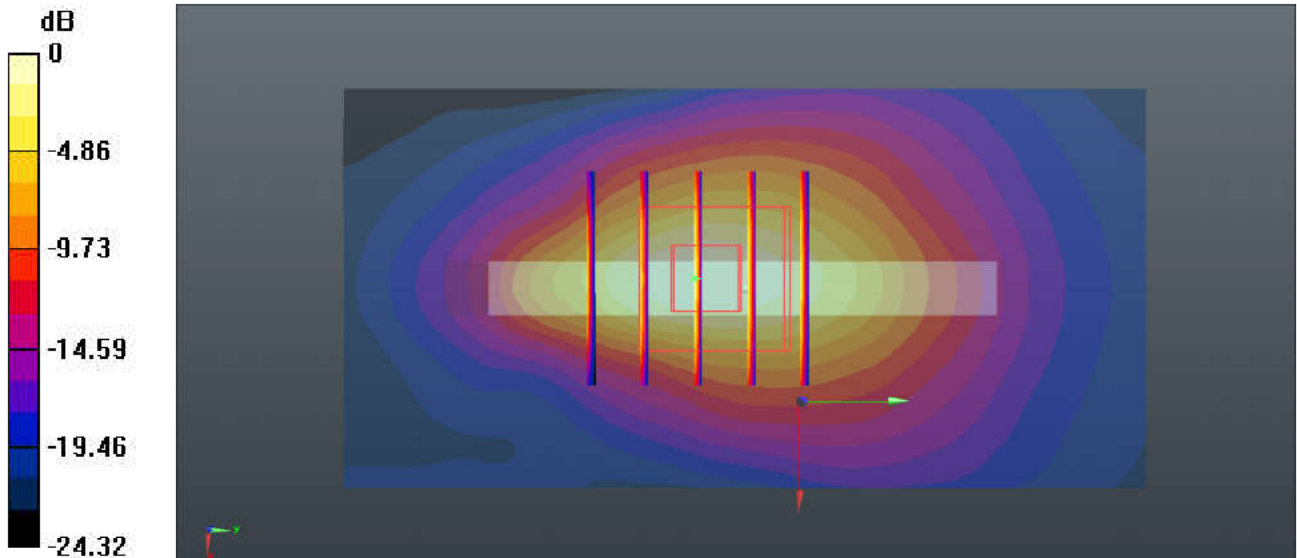
Communication System: UID 0, LTE-FDD (0); Frequency: 1905 MHz; Duty Cycle: 1:1
Medium: HSL_1900 Medium parameters used: $f = 1905$ MHz; $\sigma = 1.432$ S/m; $\epsilon_r = 38.705$; $\rho = 1000$ kg/m³
Ambient Temperature: 23.3 °C; Liquid Temperature: 22.9 °C

DASY5 Configuration:

- Probe: EX3DV4 - SN3935; ConvF(8.5, 8.5, 8.5); Calibrated: 2018.11.26
- Sensor-Surface: 1.4mm (Mechanical Surface Detection)
- Electronics: DAE4 Sn690; Calibrated: 2019.1.23
- Phantom: SAM2; Type: SAM; Serial: TP-1754
- Measurement SW: DASY52, Version 52.10 (1); SEMCAD X Version 14.6.11 (7439)

Ch26590/Area Scan (41x81x1): Interpolated grid: dx=1.500 mm, dy=1.500 mm
Maximum value of SAR (interpolated) = 1.37 W/kg

Ch26590/Zoom Scan (5x5x7)/Cube 0: Measurement grid: dx=8mm, dy=8mm, dz=5mm
Reference Value = 30.29 V/m; Power Drift = -0.01 dB
Peak SAR (extrapolated) = 1.89 W/kg
SAR(1 g) = 0.946 W/kg; SAR(10 g) = 0.446 W/kg
Maximum value of SAR (measured) = 1.25 W/kg



0 dB = 1.37 W/kg = 1.37 dBW/kg

40_LTE Band 30_10M QPSK_1RB_0Offset_Back_5mm_Ch27710

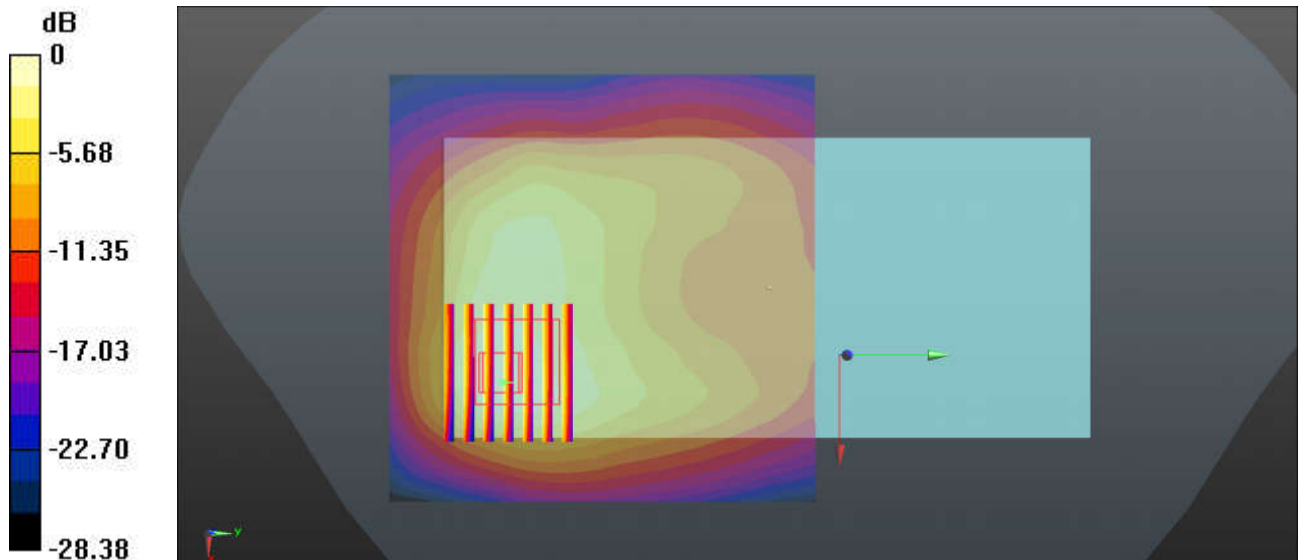
Communication System: UID 0, LTE-FDD (0); Frequency: 2310 MHz; Duty Cycle: 1:1
Medium: HSL_2300 Medium parameters used: $f = 2310$ MHz; $\sigma = 1.692$ S/m; $\epsilon_r = 38.988$; $\rho = 1000$ kg/m³
Ambient Temperature : 23.3 °C; Liquid Temperature : 22.7 °C

DASY5 Configuration:

- Probe: EX3DV4 - SN3935; ConvF(7.99, 7.99, 7.99); Calibrated: 2018.11.26
- Sensor-Surface: 1.4mm (Mechanical Surface Detection)
- Electronics: DAE4 Sn690; Calibrated: 2019.1.23
- Phantom: SAM1; Type: SAM; Serial: TP-1697
- Measurement SW: DASY52, Version 52.10 (1); SEMCAD X Version 14.6.11 (7439)

Ch27710/Area Scan (91x91x1): Interpolated grid: dx=1.200 mm, dy=1.200 mm
Maximum value of SAR (interpolated) = 2.09 W/kg

Ch27710/Zoom Scan (8x7x7)/Cube 0: Measurement grid: dx=5mm, dy=5mm, dz=5mm
Reference Value = 10.07 V/m; Power Drift = 0.10 dB
Peak SAR (extrapolated) = 2.41 W/kg
SAR(1 g) = 1.15 W/kg; SAR(10 g) = 0.599 W/kg
Maximum value of SAR (measured) = 1.90 W/kg



0 dB = 2.09 W/kg = 3.20 dBW/kg

41_LTE Band 7_20M QPSK_50RB_0Offset_Back_5mm_Ch21350

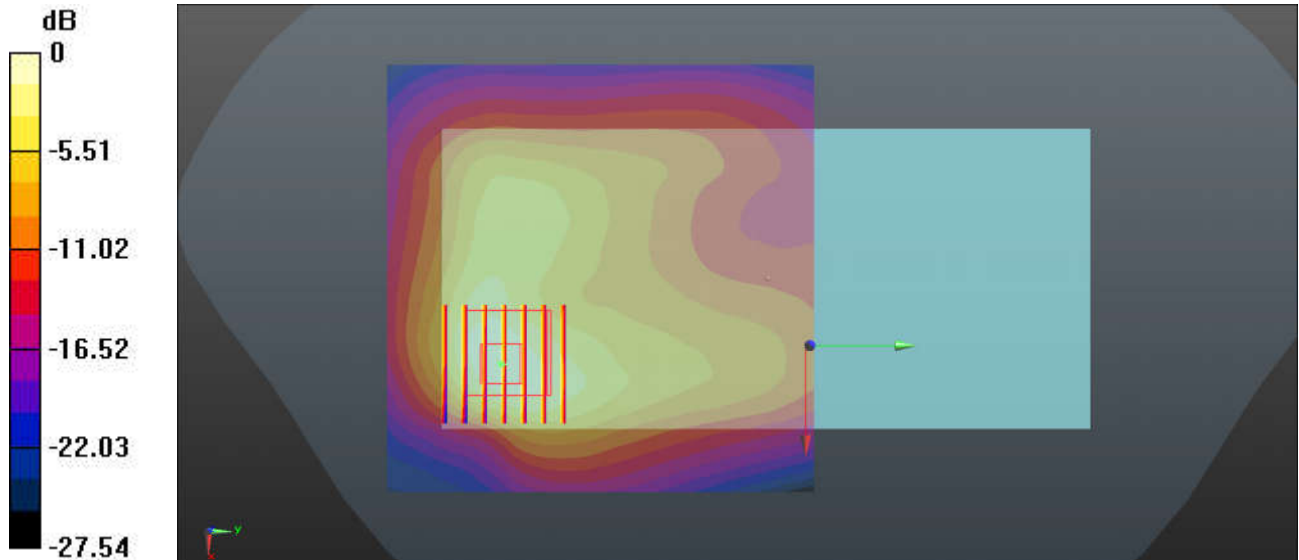
Communication System: UID 0, LTE-FDD (0); Frequency: 2560 MHz; Duty Cycle: 1:1
Medium: HSL_2600 Medium parameters used: $f = 2560$ MHz; $\sigma = 1.978$ S/m; $\epsilon_r = 37.943$; $\rho = 1000$ kg/m³
Ambient Temperature : 23.3 °C; Liquid Temperature : 22.6 °C

DASY5 Configuration:

- Probe: EX3DV4 - SN3935; ConvF(7.38, 7.38, 7.38); Calibrated: 2018.11.26
- Sensor-Surface: 1.4mm (Mechanical Surface Detection)
- Electronics: DAE4 Sn690; Calibrated: 2019.1.23
- Phantom: SAM1; Type: SAM; Serial: TP-1697
- Measurement SW: DASY52, Version 52.10 (1); SEMCAD X Version 14.6.11 (7439)

Ch21350/Area Scan (91x91x1): Interpolated grid: dx=1.200 mm, dy=1.200 mm
Maximum value of SAR (interpolated) = 2.17 W/kg

Ch21350/Zoom Scan (7x7x7)/Cube 0: Measurement grid: dx=5mm, dy=5mm, dz=5mm
Reference Value = 9.247 V/m; Power Drift = -0.14 dB
Peak SAR (extrapolated) = 2.97 W/kg
SAR(1 g) = 1.16 W/kg; SAR(10 g) = 0.519 W/kg
Maximum value of SAR (measured) = 2.15 W/kg



0 dB = 2.17 W/kg = 3.36 dBW/kg

42_LTE Band 41_20M QPSK_1RB_0Offset_Back_5mm_Ch41055

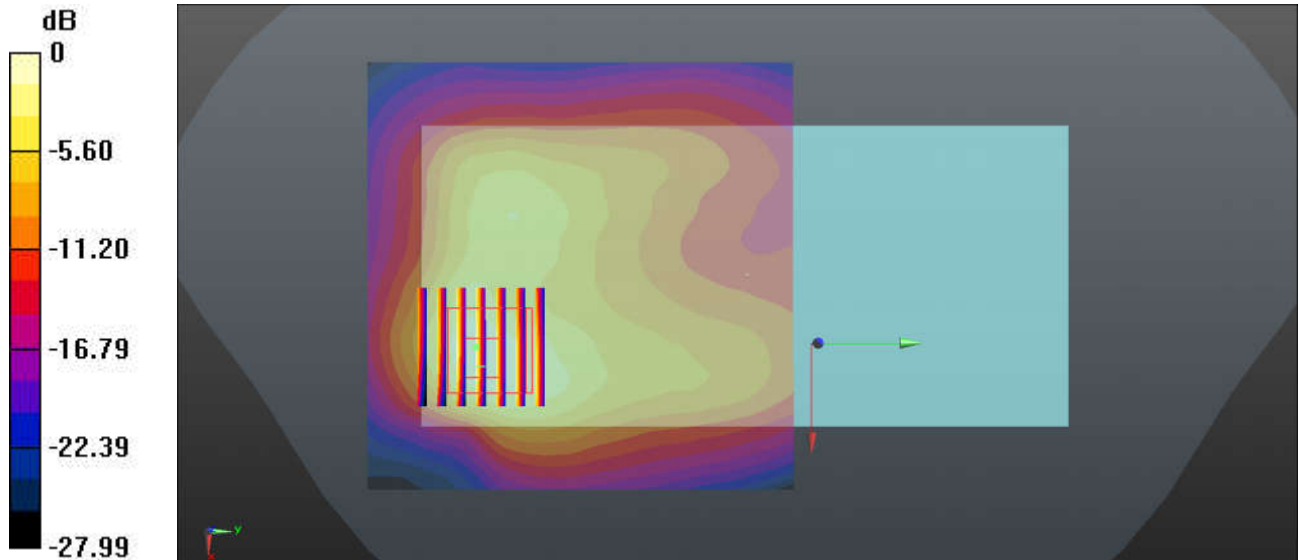
Communication System: UID 0, LTE-TDD (0); Frequency: 2636.5 MHz; Duty Cycle: 1:1.59
Medium: HSL_2600 Medium parameters used: $f = 2636.5$ MHz; $\sigma = 2.066$ S/m; $\epsilon_r = 37.634$; $\rho = 1000$ kg/m³
Ambient Temperature : 23.3 °C; Liquid Temperature : 22.6 °C

DASY5 Configuration:

- Probe: EX3DV4 - SN3935; ConvF(7.38, 7.38, 7.38); Calibrated: 2018.11.26
- Sensor-Surface: 1.4mm (Mechanical Surface Detection)
- Electronics: DAE4 Sn690; Calibrated: 2019.1.23
- Phantom: SAM1; Type: SAM; Serial: TP:1697
- Measurement SW: DASY52, Version 52.10 (1); SEMCAD X Version 14.6.11 (7439)

Ch41055/Area Scan (91x91x1): Interpolated grid: dx=1.200 mm, dy=1.200 mm
Maximum value of SAR (interpolated) = 1.98 W/kg

Ch41055/Zoom Scan (7x7x7)/Cube 0: Measurement grid: dx=5mm, dy=5mm, dz=5mm
Reference Value = 8.004 V/m; Power Drift = -0.03 dB
Peak SAR (extrapolated) = 2.82 W/kg
SAR(1 g) = 1.07 W/kg; SAR(10 g) = 0.462 W/kg
Maximum value of SAR (measured) = 2.05 W/kg



0 dB = 1.98 W/kg = 2.97 dBW/kg

43_LTE Band 41(HPUE)_20M QPSK_1RB_0Offset_Back_5mm_Ch40185

Communication System: UID 0, LTE-TDD (0); Frequency: 2549.5 MHz; Duty Cycle: 1:2.331
 Medium: HSL_2600 Medium parameters used: $f = 2549.5$ MHz; $\sigma = 1.965$ S/m; $\epsilon_r = 37.975$; $\rho = 1000$ kg/m³
 Ambient Temperature : 23.3 °C; Liquid Temperature : 22.6 °C

DASY5 Configuration:

- Probe: EX3DV4 - SN3935; ConvF(7.38, 7.38, 7.38); Calibrated: 2018.11.26
- Sensor-Surface: 1.4mm (Mechanical Surface Detection)
- Electronics: DAE4 Sn690; Calibrated: 2019.1.23
- Phantom: SAM1; Type: SAM; Serial: TP-1697
- Measurement SW: DASY52, Version 52.10 (1); SEMCAD X Version 14.6.11 (7439)

Ch40185/Area Scan (91x91x1): Interpolated grid: dx=1.200 mm, dy=1.200 mm

Maximum value of SAR (interpolated) = 1.84 W/kg

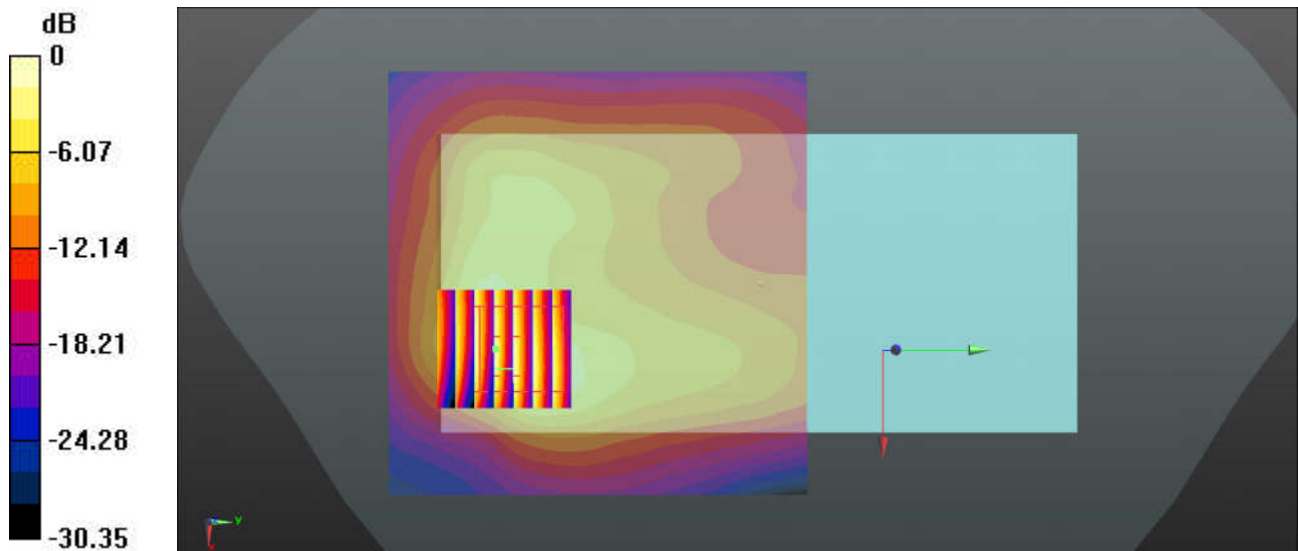
Ch40185/Zoom Scan (7x7x7)/Cube 0: Measurement grid: dx=5mm, dy=5mm, dz=5mm

Reference Value = 8.170 V/m; Power Drift = 0.04 dB

Peak SAR (extrapolated) = 2.46 W/kg

SAR(1 g) = 0.949 W/kg; SAR(10 g) = 0.422 W/kg

Maximum value of SAR (measured) = 1.69 W/kg



0 dB = 1.69 W/kg = 2.28 dBW/kg

44_WLAN 2.4GHz_802.11b 1Mbps_Top Side_5mm_Ant 1_Ch1

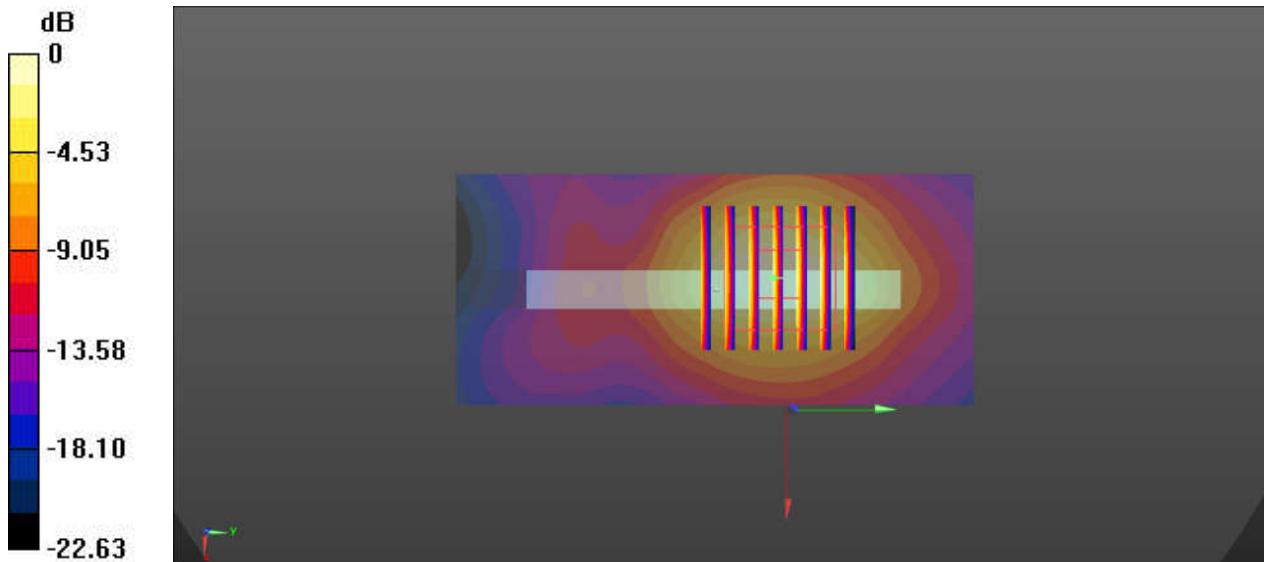
Communication System: UID 0, 802.11b (0); Frequency: 2412 MHz; Duty Cycle: 1:1
Medium: HSL_2450 Medium parameters used: $f = 2412$ MHz; $\sigma = 1.739$ S/m; $\epsilon_r = 40.765$; $\rho = 1000$ kg/m³
Ambient Temperature : 23.2 °C ; Liquid Temperature : 22.8 °C

DASY5 Configuration:

- Probe: EX3DV4 - SN3857; ConvF(7.5, 7.5, 7.5); Calibrated: 2019.5.27
- Sensor-Surface: 1.4mm (Mechanical Surface Detection)
- Electronics: DAE4 Sn690; Calibrated: 2019.1.23
- Phantom: SAM1; Type: SAM; Serial: TP-1697
- Measurement SW: DASY52, Version 52.10 (1); SEMCAD X Version 14.6.11 (7439)

Ch1/Area Scan (41x91x1): Interpolated grid: dx=1.200 mm, dy=1.200 mm
Maximum value of SAR (interpolated) = 1.77 W/kg

Ch1/Zoom Scan (7x7x7)/Cube 0: Measurement grid: dx=5mm, dy=5mm, dz=5mm
Reference Value = 25.11 V/m; Power Drift = 0.04 dB
Peak SAR (extrapolated) = 2.08 W/kg
SAR(1 g) = 1.02 W/kg; SAR(10 g) = 0.491 W/kg
Maximum value of SAR (measured) = 1.68 W/kg



0 dB = 1.77 W/kg = 2.48 dBW/kg

45_WLAN5.2GHz_802.11n-HT40 MCS0_Back_5mm_Ant 1_Ch38

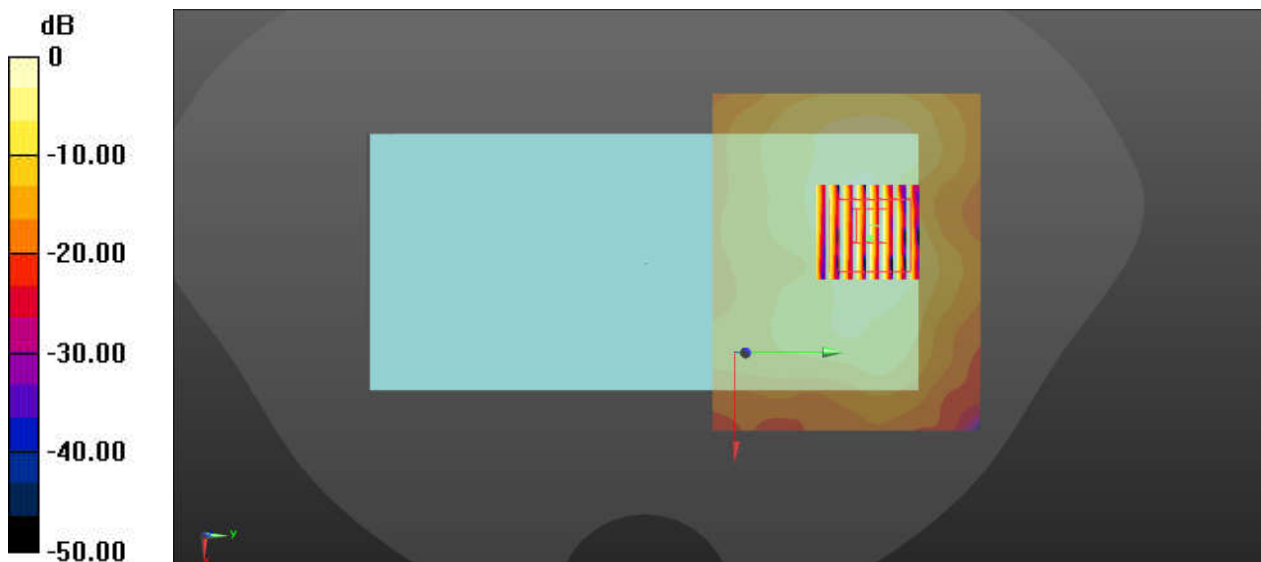
Communication System: UID 0, 802.11n (0); Frequency: 5190 MHz; Duty Cycle: 1:1.038
Medium: HSL_5000 Medium parameters used: $f = 5190$ MHz; $\sigma = 4.521$ S/m; $\epsilon_r = 36.525$; $\rho = 1000$ kg/m³
Ambient Temperature : 23.2 °C ; Liquid Temperature : 22.8 °C

DASY5 Configuration:

- Probe: EX3DV4 - SN3857; ConvF(5.19, 5.19, 5.19); Calibrated: 2019.5.27
- Sensor-Surface: 1.4mm (Mechanical Surface Detection)
- Electronics: DAE4 Sn690; Calibrated: 2019.1.23
- Phantom: SAM1; Type: SAM; Serial: TP-1697
- Measurement SW: DASY52, Version 52.10 (1); SEMCAD X Version 14.6.11 (7439)

Ch38/Area Scan (101x81x1): Interpolated grid: dx=1.000 mm, dy=1.000 mm
Maximum value of SAR (interpolated) = 2.01 W/kg

Ch38/Zoom Scan (8x8x7)/Cube 0: Measurement grid: dx=4mm, dy=4mm, dz=1.4mm
Reference Value = 0 V/m; Power Drift = 0.01 dB
Peak SAR (extrapolated) = 2.90 W/kg
SAR(1 g) = 0.829 W/kg; SAR(10 g) = 0.314 W/kg
Maximum value of SAR (measured) = 1.80 W/kg



0 dB = 2.01 W/kg = 3.03 dBW/kg

46_WLAN5.8GHz_802.11n-HT20 MCS0_Back_5mm_Ant 1_Ch151

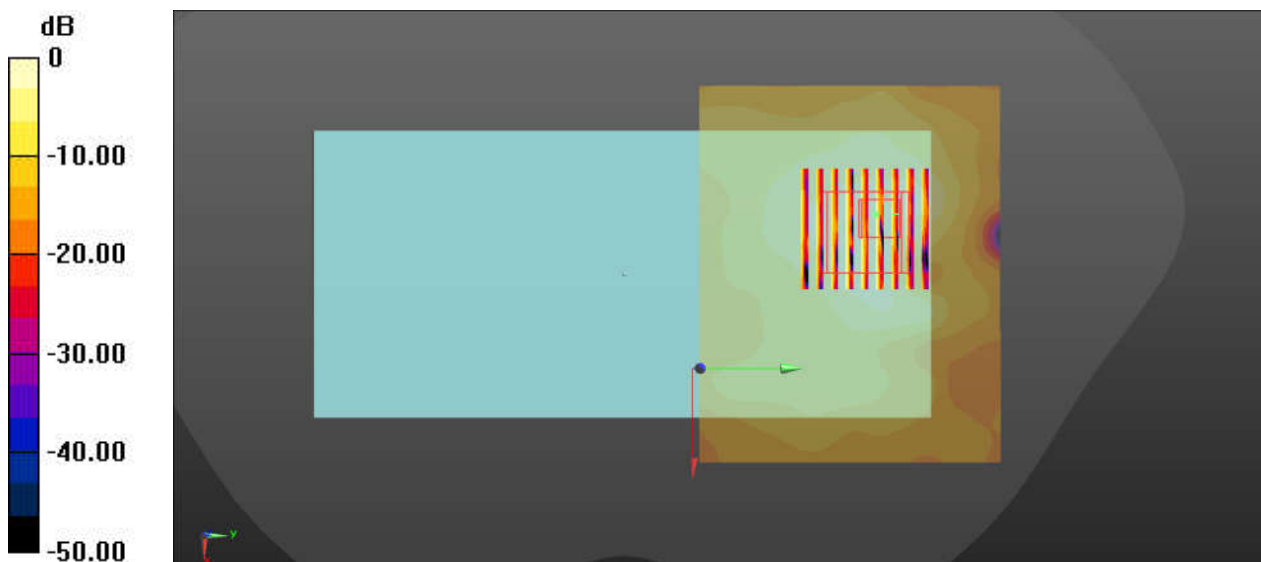
Communication System: UID 0, 802.11n (0); Frequency: 5755 MHz; Duty Cycle: 1:1.038
Medium: HSL_5000 Medium parameters used: $f = 5755$ MHz; $\sigma = 5.169$ S/m; $\epsilon_r = 35.557$; $\rho = 1000$ kg/m³
Ambient Temperature : 23.3 °C ; Liquid Temperature : 22.8 °C

DASY5 Configuration:

- Probe: EX3DV4 - SN3857; ConvF(5.17, 5.17, 5.17); Calibrated: 2019.5.27
- Sensor-Surface: 1.4mm (Mechanical Surface Detection)
- Electronics: DAE4 Sn690; Calibrated: 2019.1.23
- Phantom: SAM1; Type: SAM; Serial: TP-1697
- Measurement SW: DASY52, Version 52.10 (1); SEMCAD X Version 14.6.11 (7439)

Ch151/Area Scan (101x81x1): Interpolated grid: dx=1.000 mm, dy=1.000 mm
Maximum value of SAR (interpolated) = 1.78 W/kg

Ch151/Zoom Scan (9x9x7)/Cube 0: Measurement grid: dx=4mm, dy=4mm, dz=1.4mm
Reference Value = 3.204 V/m; Power Drift = 0.05 dB
Peak SAR (extrapolated) = 3.75 W/kg
SAR(1 g) = 0.772 W/kg; SAR(10 g) = 0.292 W/kg
Maximum value of SAR (measured) = 2.00 W/kg



0 dB = 1.78 W/kg = 2.50 dBW/kg

47_ Bluetooth_1Mbps_Top Side_5mm_Ant 1_Ch00

Communication System: UID 0, Bluetooth (0); Frequency: 2402 MHz; Duty Cycle: 1:1.305
Medium: HSL_2450 Medium parameters used: $f = 2402$ MHz; $\sigma = 1.726$ S/m; $\epsilon_r = 40.782$; $\rho = 1000$ kg/m³
Ambient Temperature : 23.2 °C ; Liquid Temperature : 22.8 °C

DASY5 Configuration:

- Probe: EX3DV4 - SN3857; ConvF(7.5, 7.5, 7.5); Calibrated: 2019.5.27
- Sensor-Surface: 1.4mm (Mechanical Surface Detection)
- Electronics: DAE4 Sn690; Calibrated: 2019.1.23
- Phantom: SAM1; Type: SAM; Serial: TP-1697
- Measurement SW: DASY52, Version 52.10 (1); SEMCAD X Version 14.6.11 (7439)

Ch0/Area Scan (51x81x1): Interpolated grid: dx=1.200 mm, dy=1.200 mm

Maximum value of SAR (interpolated) = 0.0838 W/kg

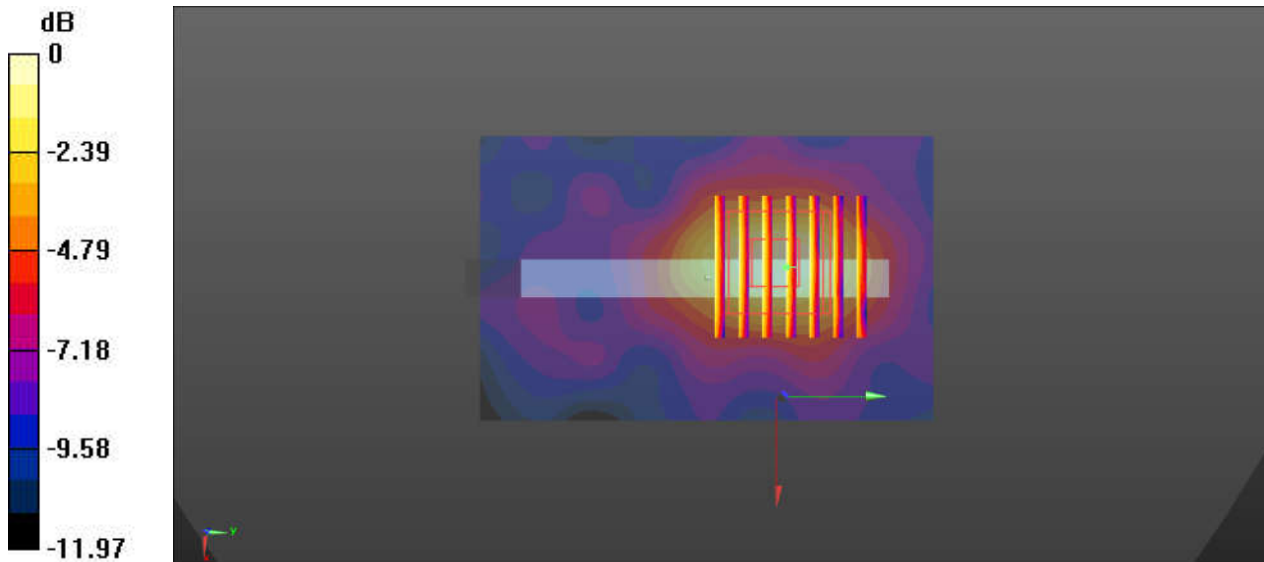
Ch0/Zoom Scan (7x7x7)/Cube 0: Measurement grid: dx=5mm, dy=5mm, dz=5mm

Reference Value = 5.407 V/m; Power Drift = -0.16 dB

Peak SAR (extrapolated) = 0.0920 W/kg

SAR(1 g) = 0.046 W/kg; SAR(10 g) = 0.022 W/kg

Maximum value of SAR (measured) = 0.0741 W/kg



0 dB = 0.0838 W/kg = -10.77 dBW/kg

48_GSM850_GPRS 4 Tx slots_Back_5mm_Ch251

Communication System: UID 0, GSM850-4UP (0); Frequency: 848.8 MHz; Duty Cycle: 1:2.08
 Medium: HSL_850 Medium parameters used: $f = 848.8 \text{ MHz}$; $\sigma = 0.943 \text{ S/m}$; $\epsilon_r = 42.081$; $\rho = 1000 \text{ kg/m}^3$
 Ambient Temperature : $23.2 \text{ }^\circ\text{C}$; Liquid Temperature : $22.9 \text{ }^\circ\text{C}$

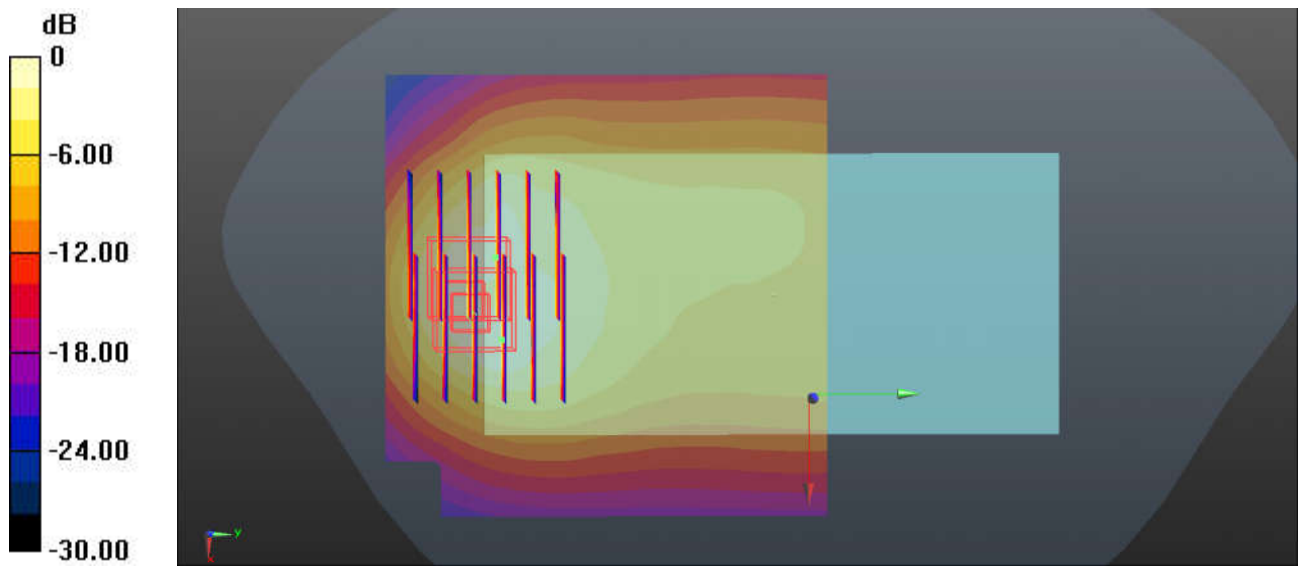
DASY5 Configuration:

- Probe: EX3DV4 - SN3935; ConvF(10.48, 10.48, 10.48); Calibrated: 2018.11.26
- Sensor-Surface: 1.4mm (Mechanical Surface Detection)
- Electronics: DAE4 Sn690; Calibrated: 2019.1.23
- Phantom: SAM2; Type: SAM; Serial: TP-1754
- Measurement SW: DASY52, Version 52.10 (1); SEMCAD X Version 14.6.11 (7439)

Ch251/Area Scan (81x81x1): Interpolated grid: $dx=1.500 \text{ mm}$, $dy=1.500 \text{ mm}$
 Maximum value of SAR (interpolated) = 1.71 W/kg

Ch251/Zoom Scan (6x6x7)/Cube 0: Measurement grid: $dx=8\text{mm}$, $dy=8\text{mm}$, $dz=5\text{mm}$
 Reference Value = 21.94 V/m ; Power Drift = -0.19 dB
 Peak SAR (extrapolated) = 4.28 W/kg
SAR(1 g) = 1.15 W/kg ; SAR(10 g) = 0.604 W/kg
 Maximum value of SAR (measured) = 1.99 W/kg

Ch251/Zoom Scan (6x6x7)/Cube 1: Measurement grid: $dx=8\text{mm}$, $dy=8\text{mm}$, $dz=5\text{mm}$
 Reference Value = 21.94 V/m ; Power Drift = -0.19 dB
 Peak SAR (extrapolated) = 2.47 W/kg
SAR(1 g) = 1.12 W/kg ; SAR(10 g) = 0.575 W/kg
 Maximum value of SAR (measured) = 1.94 W/kg



0 dB = $1.71 \text{ W/kg} = 2.33 \text{ dBW/kg}$

49_GSM1900_GPRS 3 Tx slots_Back_5mm_Ch810

Communication System: UID 0, PCS-3UP (0); Frequency: 1909.8 MHz; Duty Cycle: 1:2.77
Medium: HSL_1900 Medium parameters used: $f = 1909.8$ MHz; $\sigma = 1.438$ S/m; $\epsilon_r = 38.682$; $\rho = 1000$ kg/m³
Ambient Temperature : 23.3 °C; Liquid Temperature : 22.9 °C

DASY5 Configuration:

- Probe: EX3DV4 - SN3935; ConvF(8.5, 8.5, 8.5); Calibrated: 2018.11.26
- Sensor-Surface: 1.4mm (Mechanical Surface Detection)
- Electronics: DAE4 Sn690; Calibrated: 2019.1.23
- Phantom: SAM2; Type: SAM; Serial: TP-1754
- Measurement SW: DASY52, Version 52.10 (1); SEMCAD X Version 14.6.11 (7439)

Ch810/Area Scan (81x81x1): Interpolated grid: dx=1.500 mm, dy=1.500 mm

Maximum value of SAR (interpolated) = 1.24 W/kg

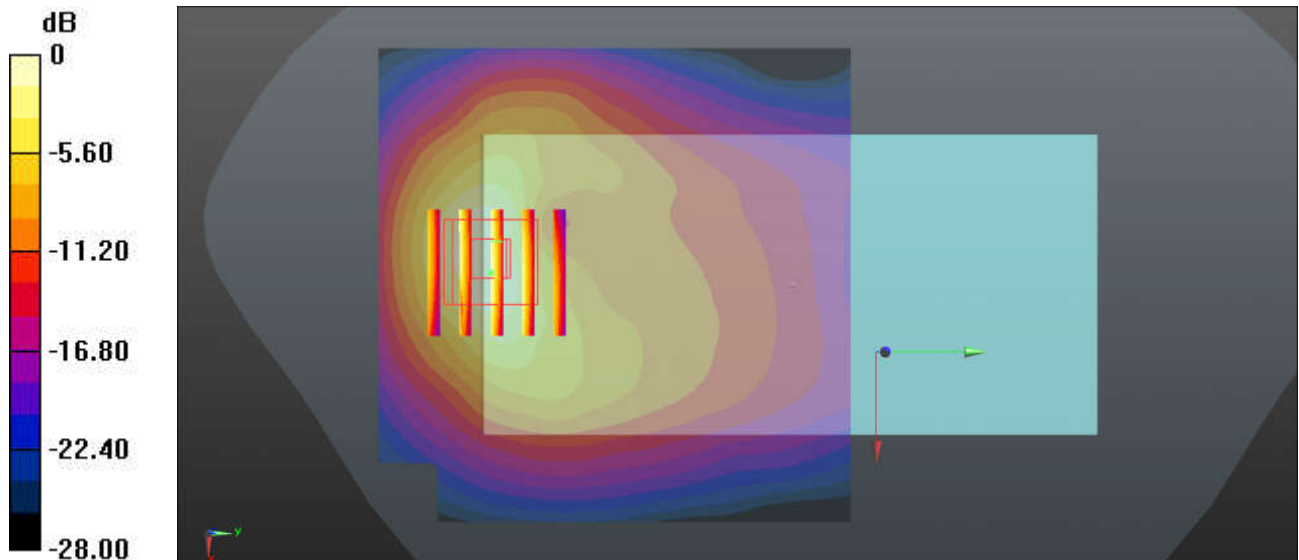
Ch810/Zoom Scan (5x5x7)/Cube 0: Measurement grid: dx=8mm, dy=8mm, dz=5mm

Reference Value = 0.4730 V/m; Power Drift = 0.08 dB

Peak SAR (extrapolated) = 3.26 W/kg

SAR(1 g) = 0.983 W/kg; SAR(10 g) = 0.489 W/kg

Maximum value of SAR (measured) = 1.43 W/kg



0 dB = 1.24 W/kg = 0.93 dBW/kg

50_WCDMA V_RMC 12.2Kbps_Back_5mm_Ch4233

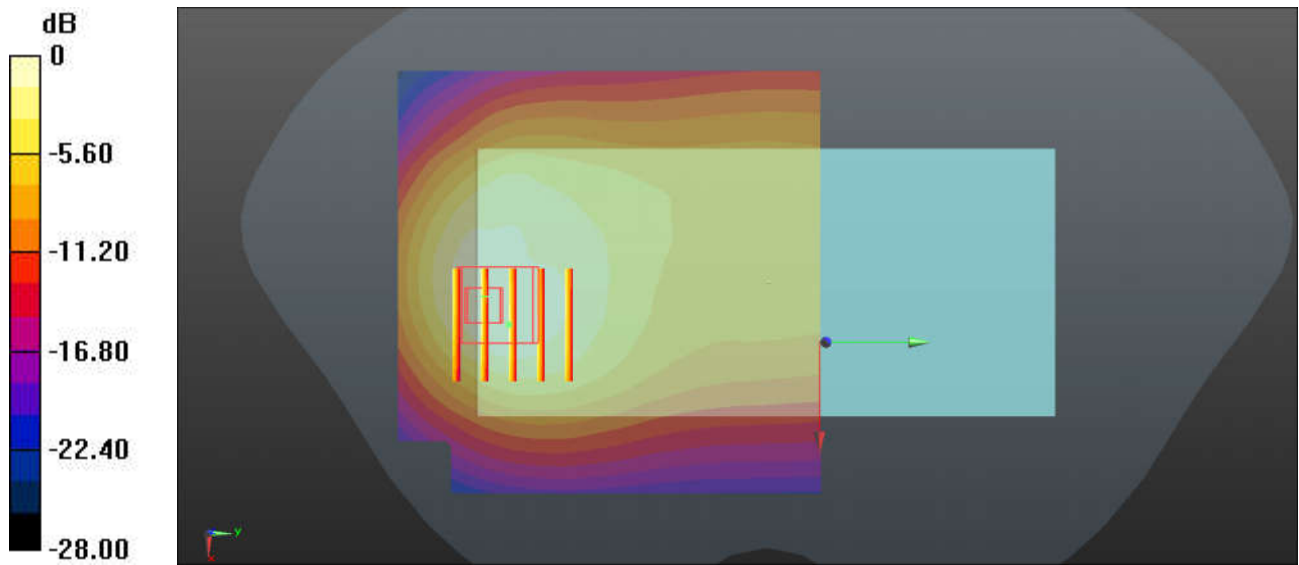
Communication System: UID 0, WCDMA (0); Frequency: 846.6 MHz; Duty Cycle: 1:1
Medium: HSL_850 Medium parameters used: $f = 846.6$ MHz; $\sigma = 0.941$ S/m; $\epsilon_r = 42.1$; $\rho = 1000$ kg/m³
Ambient Temperature : 23.2 °C ; Liquid Temperature : 22.9 °C

DASY5 Configuration:

- Probe: EX3DV4 - SN3935; ConvF(10.48, 10.48, 10.48); Calibrated: 2018.11.26
- Sensor-Surface: 1.4mm (Mechanical Surface Detection)
- Electronics: DAE4 Sn690; Calibrated: 2019.1.23
- Phantom: SAM2; Type: SAM; Serial: TP-1754
- Measurement SW: DASY52, Version 52.10 (1); SEMCAD X Version 14.6.11 (7439)

Ch4233/Area Scan (81x81x1): Interpolated grid: dx=1.500 mm, dy=1.500 mm
Maximum value of SAR (interpolated) = 1.46 W/kg

Ch4233/Zoom Scan (5x5x7)/Cube 0: Measurement grid: dx=8mm, dy=8mm, dz=5mm
Reference Value = 4.253 V/m; Power Drift = 0.08 dB
Peak SAR (extrapolated) = 2.40 W/kg
SAR(1 g) = 1.16 W/kg; SAR(10 g) = 0.631 W/kg
Maximum value of SAR (measured) = 1.53 W/kg



0 dB = 1.46 W/kg = 1.64 dBW/kg

51_WCDMA IV_RMC 12.2Kbps_Back_5mm_Ch1413

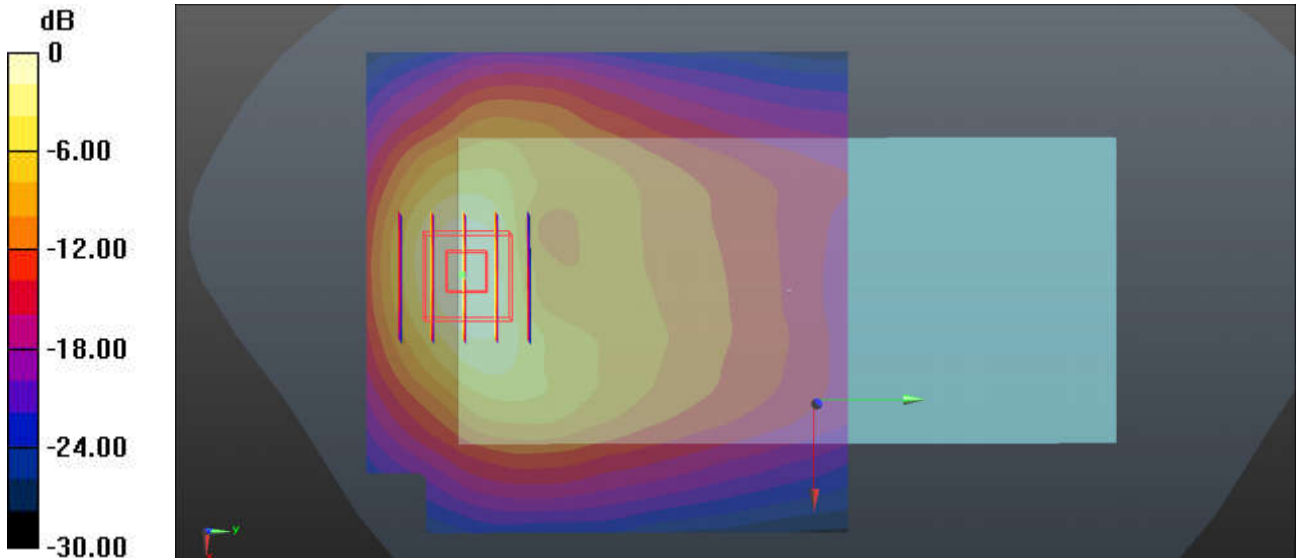
Communication System: UID 0, WCDMA (0); Frequency: 1732.6 MHz; Duty Cycle: 1:1
Medium: HSL_1750 Medium parameters used: $f = 1732.6$ MHz; $\sigma = 1.363$ S/m; $\epsilon_r = 39.781$; $\rho = 1000$ kg/m³
Ambient Temperature : 23.2 °C; Liquid Temperature : 22.9 °C

DASY5 Configuration:

- Probe: EX3DV4 - SN3935; ConvF(8.91, 8.91, 8.91); Calibrated: 2018.11.26
- Sensor-Surface: 1.4mm (Mechanical Surface Detection)
- Electronics: DAE4 Sn690; Calibrated: 2019.1.23
- Phantom: SAM2; Type: SAM; Serial: TP-1754
- Measurement SW: DASY52, Version 52.10 (1); SEMCAD X Version 14.6.11 (7439)

Ch1413/Area Scan (81x81x1): Interpolated grid: dx=1.500 mm, dy=1.500 mm
Maximum value of SAR (interpolated) = 1.30 W/kg

Ch1413/Zoom Scan (5x5x7)/Cube 0: Measurement grid: dx=8mm, dy=8mm, dz=5mm
Reference Value = 0.1560 V/m; Power Drift = 0.11 dB
Peak SAR (extrapolated) = 1.72 W/kg
SAR(1 g) = 1 W/kg; SAR(10 g) = 0.523 W/kg
Maximum value of SAR (measured) = 1.47 W/kg



0 dB = 1.30 W/kg = 1.14 dBW/kg

52_WCDMA II_RMC 12.2Kbps_Back_5mm_Ch9538

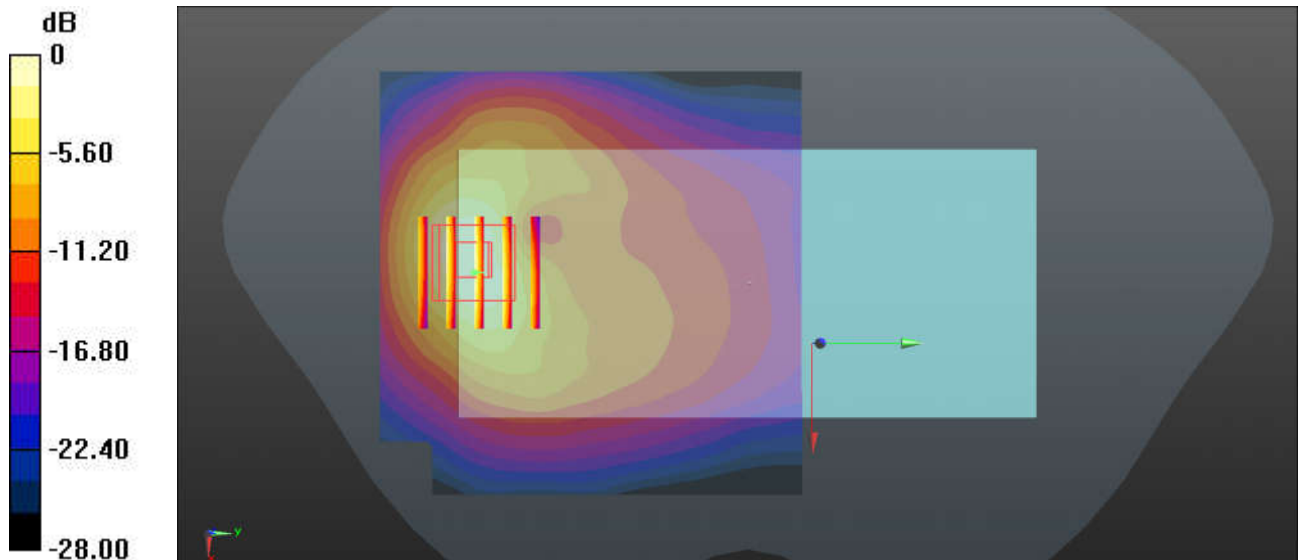
Communication System: UID 0, WCDMA (0); Frequency: 1907.6 MHz; Duty Cycle: 1:1
Medium: HSL_1900 Medium parameters used: $f = 1907.6$ MHz; $\sigma = 1.435$ S/m; $\epsilon_r = 38.692$; $\rho = 1000$ kg/m³
Ambient Temperature : 23.3 °C; Liquid Temperature : 22.9 °C

DASY5 Configuration:

- Probe: EX3DV4 - SN3935; ConvF(8.5, 8.5, 8.5); Calibrated: 2018.11.26
- Sensor-Surface: 1.4mm (Mechanical Surface Detection)
- Electronics: DAE4 Sn690; Calibrated: 2019.1.23
- Phantom: SAM2; Type: SAM; Serial: TP-1754
- Measurement SW: DASY52, Version 52.10 (1); SEMCAD X Version 14.6.11 (7439)

Ch9538/Area Scan (81x81x1): Interpolated grid: dx=1.500 mm, dy=1.500 mm
Maximum value of SAR (interpolated) = 1.31 W/kg

Ch9538/Zoom Scan (5x5x7)/Cube 0: Measurement grid: dx=8mm, dy=8mm, dz=5mm
Reference Value = 0.5680 V/m; Power Drift = 0.07 dB
Peak SAR (extrapolated) = 2.05 W/kg
SAR(1 g) = 1.12 W/kg; SAR(10 g) = 0.567 W/kg
Maximum value of SAR (measured) = 1.39 W/kg



0 dB = 1.31 W/kg = 1.17 dBW/kg

53_CDMA2000 BC10_RC3 SO32 (F+SCH) _Back_5mm_Ch684

Communication System: UID 0, CDMA (0); Frequency: 823.1 MHz; Duty Cycle: 1:1

Medium: HSL_850 Medium parameters used: $f = 823.1$ MHz; $\sigma = 0.916$ S/m; $\epsilon_r = 42.356$; $\rho = 1000$ kg/m³

Ambient Temperature : 23.2 °C; Liquid Temperature : 22.9 °C

DASY5 Configuration:

- Probe: EX3DV4 - SN3935; ConvF(10.48, 10.48, 10.48); Calibrated: 2018.11.26
- Sensor-Surface: 1.4mm (Mechanical Surface Detection)
- Electronics: DAE4 Sn690; Calibrated: 2019.1.23
- Phantom: SAM2; Type: SAM; Serial: TP-1754
- Measurement SW: DASY52, Version 52.10 (1); SEMCAD X Version 14.6.11 (7439)

Ch684/Area Scan (81x81x1): Interpolated grid: dx=1.500 mm, dy=1.500 mm

Maximum value of SAR (interpolated) = 1.50 W/kg

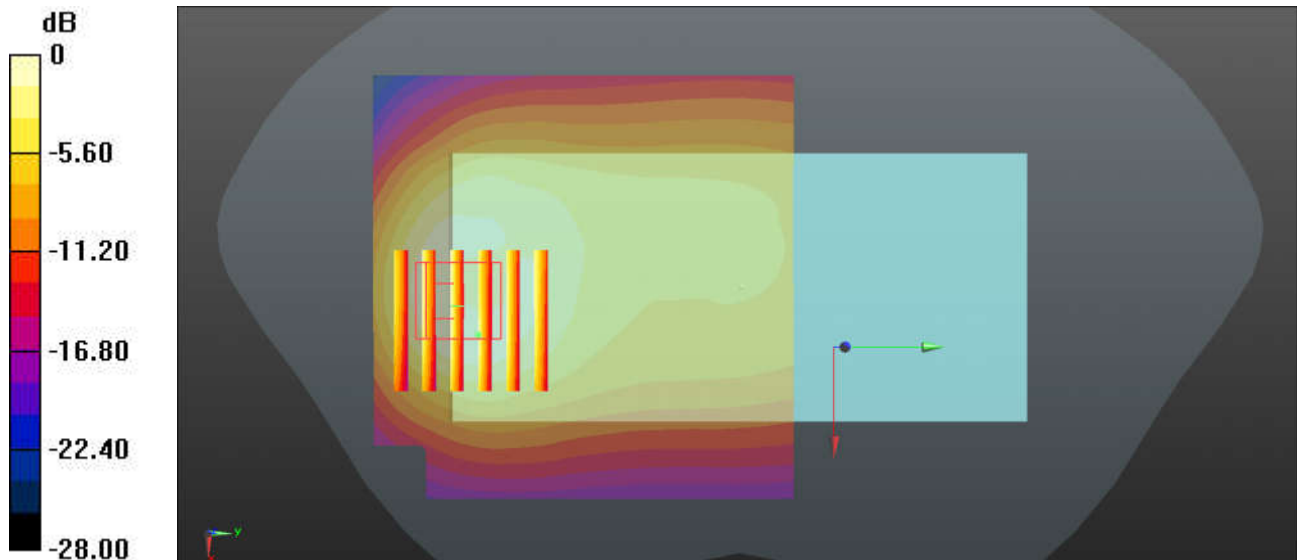
Ch684/Zoom Scan (6x6x7)/Cube 0: Measurement grid: dx=8mm, dy=8mm, dz=5mm

Reference Value = 22.71 V/m; Power Drift = -0.06 dB

Peak SAR (extrapolated) = 2.28 W/kg

SAR(1 g) = 1.05 W/kg; SAR(10 g) = 0.557 W/kg

Maximum value of SAR (measured) = 1.81 W/kg



0 dB = 1.50 W/kg = 1.76 dBW/kg

54_CDMA2000 BC0_RC3 SO32 (F+SCH) _Back_5mm_Ch384

Communication System: UID 0, CDMA (0); Frequency: 836.52 MHz; Duty Cycle: 1:1

Medium: HSL_850 Medium parameters used: $f = 836.52$ MHz; $\sigma = 0.931$ S/m; $\epsilon_r = 42.2$; $\rho = 1000$ kg/m³

Ambient Temperature : 23.2 °C ; Liquid Temperature : 22.9 °C

DASY5 Configuration:

- Probe: EX3DV4 - SN3935; ConvF(10.48, 10.48, 10.48); Calibrated: 2018.11.26
- Sensor-Surface: 1.4mm (Mechanical Surface Detection)
- Electronics: DAE4 Sn690; Calibrated: 2019.1.23
- Phantom: SAM2; Type: SAM; Serial: TP-1754
- Measurement SW: DASY52, Version 52.10 (1); SEMCAD X Version 14.6.11 (7439)

Ch384/Area Scan (81x81x1): Interpolated grid: dx=1.500 mm, dy=1.500 mm

Maximum value of SAR (interpolated) = 1.81 W/kg

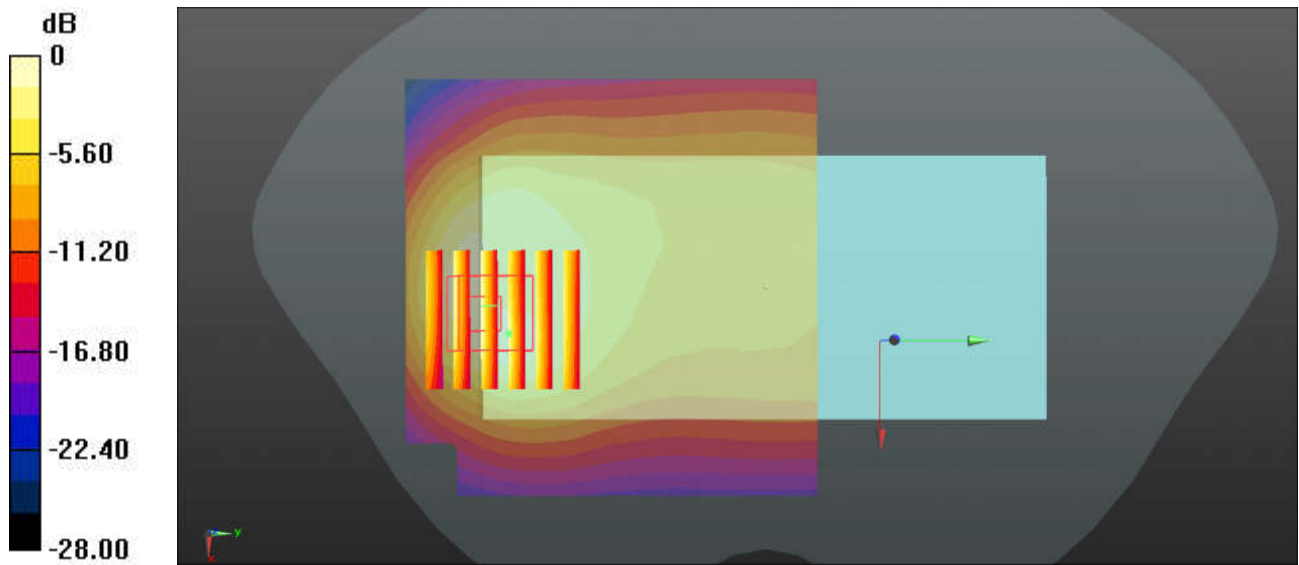
Ch384/Zoom Scan (6x6x7)/Cube 0: Measurement grid: dx=8mm, dy=8mm, dz=5mm

Reference Value = 21.78 V/m; Power Drift = -0.03 dB

Peak SAR (extrapolated) = 2.59 W/kg

SAR(1 g) = 1.2 W/kg; SAR(10 g) = 0.634 W/kg

Maximum value of SAR (measured) = 2.04 W/kg



0 dB = 1.81 W/kg = 2.58 dBW/kg

55_CDMA2000 BC1_RC3 SO32 (F+SCH) _Back_5mm_Headset_Ch1175

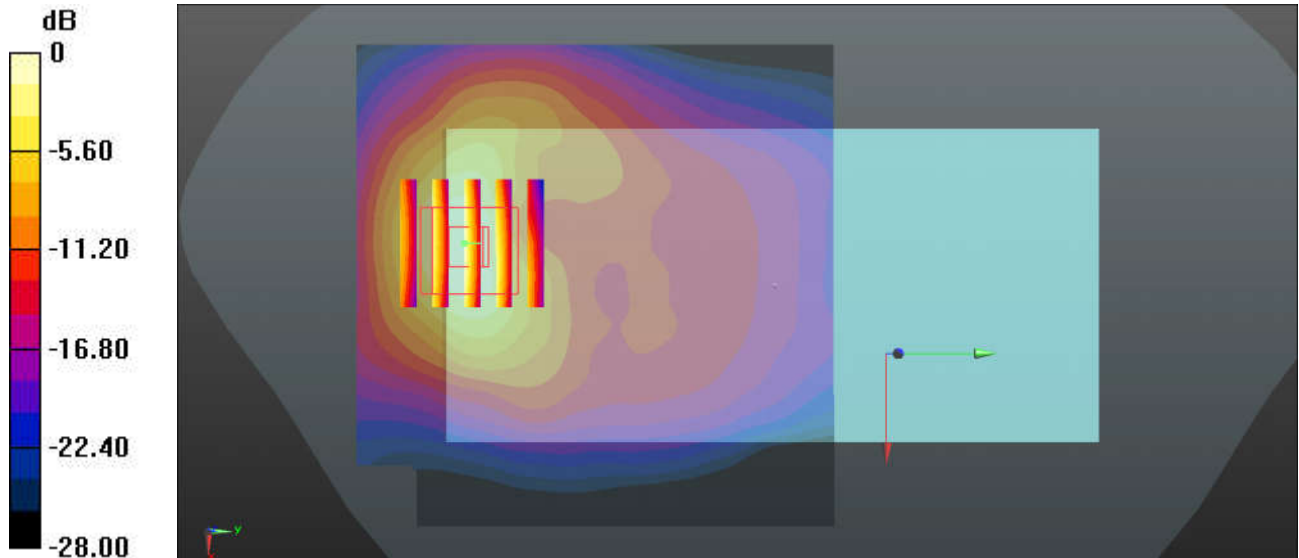
Communication System: UID 0, CDMA (0); Frequency: 1908.75 MHz; Duty Cycle: 1:1
Medium: HSL_1900 Medium parameters used: $f = 1908.75$ MHz; $\sigma = 1.436$ S/m; $\epsilon_r = 38.687$; $\rho = 1000$ kg/m³
Ambient Temperature : 23.3 °C; Liquid Temperature : 22.9 °C

DASY5 Configuration:

- Probe: EX3DV4 - SN3935; ConvF(8.5, 8.5, 8.5); Calibrated: 2018.11.26
- Sensor-Surface: 1.4mm (Mechanical Surface Detection)
- Electronics: DAE4 Sn690; Calibrated: 2019.1.23
- Phantom: SAM2; Type: SAM; Serial: TP-1754
- Measurement SW: DASY52, Version 52.10 (1); SEMCAD X Version 14.6.11 (7439)

Ch1175/Area Scan (81x81x1): Interpolated grid: dx=1.500 mm, dy=1.500 mm
Maximum value of SAR (interpolated) = 1.40 W/kg

Ch1175/Zoom Scan (5x5x7)/Cube 0: Measurement grid: dx=8mm, dy=8mm, dz=5mm
Reference Value = 5.443 V/m; Power Drift = 0.15 dB
Peak SAR (extrapolated) = 1.87 W/kg
SAR(1 g) = 0.996 W/kg; SAR(10 g) = 0.492 W/kg
Maximum value of SAR (measured) = 1.56 W/kg



0 dB = 1.40 W/kg = 1.46 dBW/kg

56_LTE Band 71_20M QPSK_1RB_0Offset_Back_5mm_Ch133322

Communication System: UID 0, LTE-FDD (0); Frequency: 683 MHz; Duty Cycle: 1:1

Medium: HSL_750 Medium parameters used: $f = 683$ MHz; $\sigma = 0.846$ S/m; $\epsilon_r = 42.691$; $\rho = 1000$ kg/m³

Ambient Temperature : 23.2 °C; Liquid Temperature : 22.7 °C

DASY5 Configuration:

- Probe: EX3DV4 - SN3935; ConvF(10.83, 10.83, 10.83); Calibrated: 2018.11.26
- Sensor-Surface: 1.4mm (Mechanical Surface Detection)
- Electronics: DAE4 Sn690; Calibrated: 2019.1.23
- Phantom: SAM2; Type: SAM; Serial: TP-1754
- Measurement SW: DASY52, Version 52.10 (1); SEMCAD X Version 14.6.11 (7439)

Ch133322/Area Scan (81x81x1): Interpolated grid: dx=1.500 mm, dy=1.500 mm

Maximum value of SAR (interpolated) = 0.947 W/kg

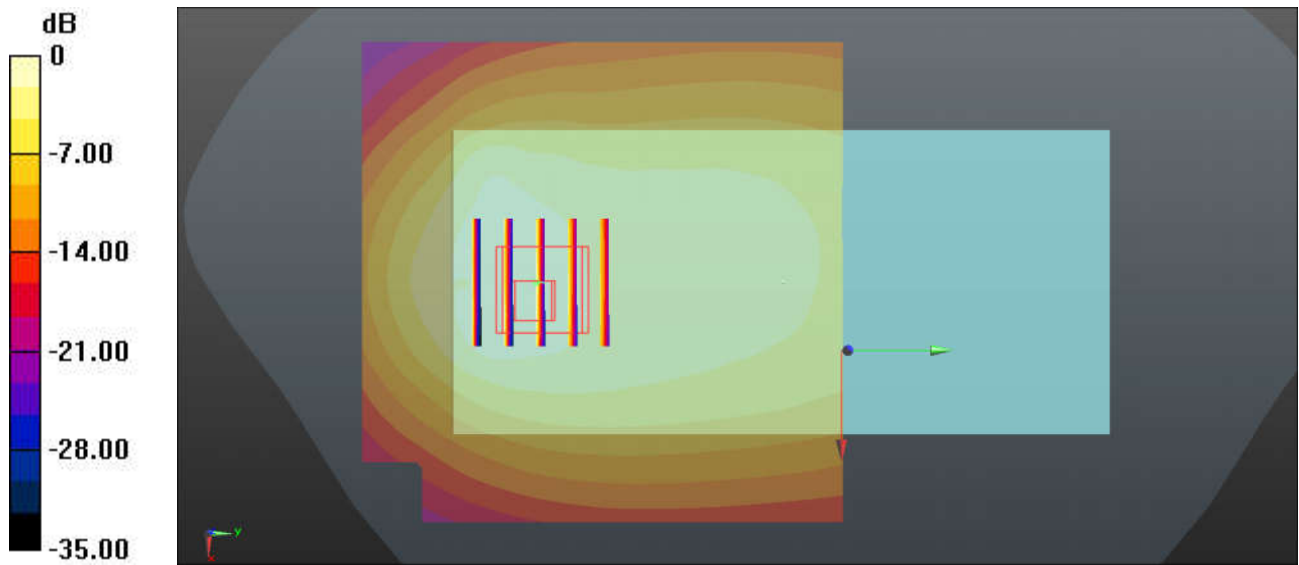
Ch133322/Zoom Scan (5x5x7)/Cube 0: Measurement grid: dx=8mm, dy=8mm, dz=5mm

Reference Value = 21.11 V/m; Power Drift = -0.05 dB

Peak SAR (extrapolated) = 1.49 W/kg

SAR(1 g) = 0.757 W/kg; SAR(10 g) = 0.430 W/kg

Maximum value of SAR (measured) = 0.987 W/kg



0 dB = 0.947 W/kg = -0.24 dBW/kg