

#52_GSM850_GPRS (3 Tx slots)_Back_5mm_Ch251

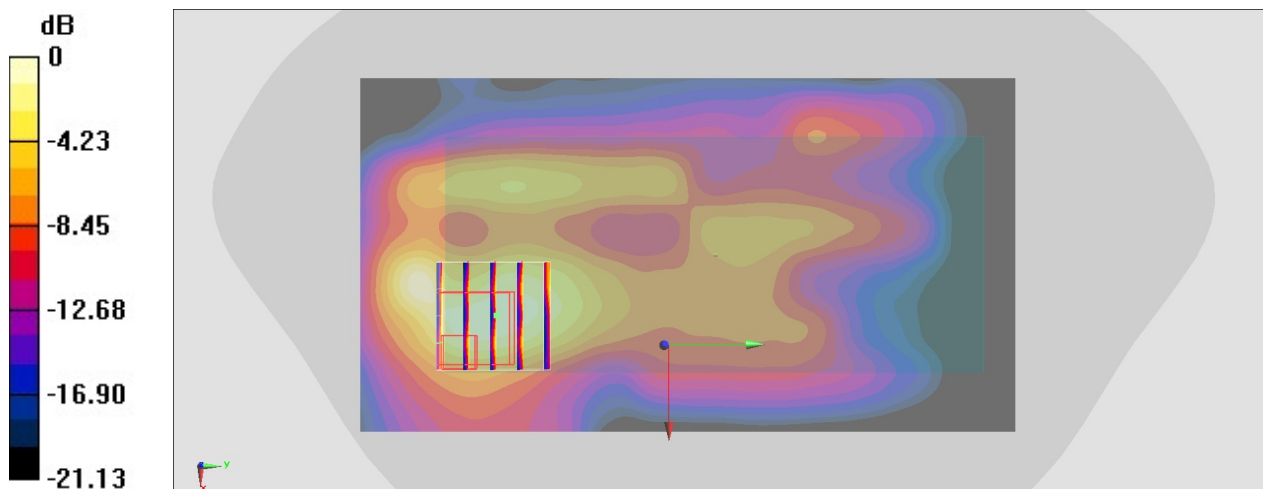
Communication System: GSM850; Frequency: 848.8 MHz; Duty Cycle: 1:2.77
Medium: HSL_850_200223 Medium parameters used: $f = 849$ MHz; $\sigma = 0.907$ S/m; $\epsilon_r = 42.217$; $\rho = 1000$ kg/m³
Ambient Temperature : 23.5 °C; Liquid Temperature : 22.5 °C

DASY5 Configuration

- Probe: EX3DV4 - SN3925; ConvF(10.18, 10.18, 10.18) @ 848.8 MHz; Calibrated: 2019/5/24
- Sensor-Surface: 1.4mm (Mechanical Surface Detection)
- Electronics: DAE4 Sn778; Calibrated: 2019/5/21
- Phantom: Twin-SAM V5.0 (30deg probe tilt); Type: QD 000 P40 CD; Serial: 1885
- Measurement SW: DASY52, Version 52.10 (2); SEMCAD X Version 14.6.12 (7450)

Area Scan (71x131x1): Interpolated grid: dx=1.500 mm, dy=1.500 mm
Maximum value of SAR (interpolated) = 1.29 W/kg

Zoom Scan (5x5x7)/Cube 0: Measurement grid: dx=8mm, dy=8mm, dz=5mm
Reference Value = 39.37 V/m; Power Drift = -0.13 dB
Peak SAR (extrapolated) = 1.97 W/kg
SAR(1 g) = 0.793 W/kg; SAR(10 g) = 0.321 W/kg
Maximum value of SAR (measured) = 1.40 W/kg



0 dB = 1.40 W/kg = 1.46 dBW/kg

#53_GSM1900_GPRS (4 Tx slots)_Back_5mm_Ch810

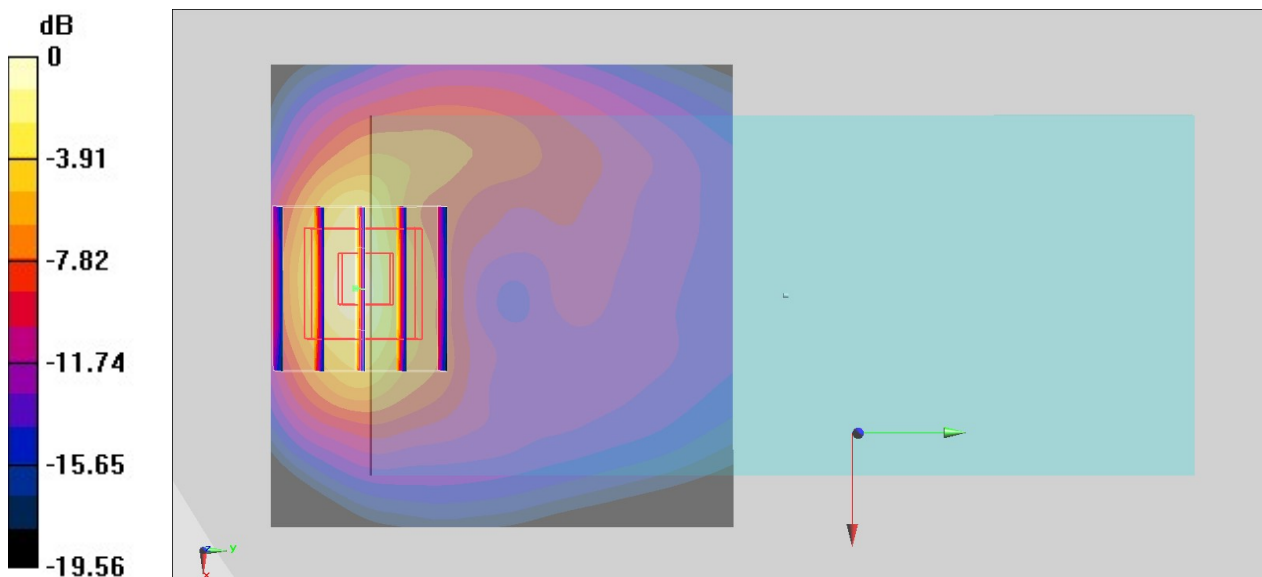
Communication System: PCS; Frequency: 1909.8 MHz; Duty Cycle: 1:2.08
Medium: HSL_1900_200313 Medium parameters used: $f = 1910$ MHz; $\sigma = 1.463$ S/m; $\epsilon_r = 41$; $\rho = 1000$ kg/m³
Ambient Temperature : 23.4 °C ; Liquid Temperature : 22.4 °C

DASY5 Configuration

- Probe: EX3DV4 - SN3925; ConvF(8.46, 8.46, 8.46) @ 1909.8 MHz; Calibrated: 2019/5/24
- Sensor-Surface: 1.4mm (Mechanical Surface Detection)
- Electronics: DAE4 Sn778; Calibrated: 2019/5/21
- Phantom: Twin-SAM V5.0 (30deg probe tilt); Type: QD 000 P40 CD; Serial: 1885
- Measurement SW: DASY52, Version 52.10 (2); SEMCAD X Version 14.6.12 (7450)

Area Scan (61x61x1): Interpolated grid: dx=1.500 mm, dy=1.500 mm
Maximum value of SAR (interpolated) = 0.846 W/kg

Zoom Scan (5x5x7)/Cube 0: Measurement grid: dx=8mm, dy=8mm, dz=5mm
Reference Value = 15.55 V/m; Power Drift = -0.00 dB
Peak SAR (extrapolated) = 1.19 W/kg
SAR(1 g) = 0.588 W/kg; SAR(10 g) = 0.274 W/kg
Maximum value of SAR (measured) = 0.918 W/kg



0 dB = 0.918 W/kg = -0.37 dBW/kg

#54_WCDMA II_RMC 12.2Kbps_Back_5mm_Ch9538

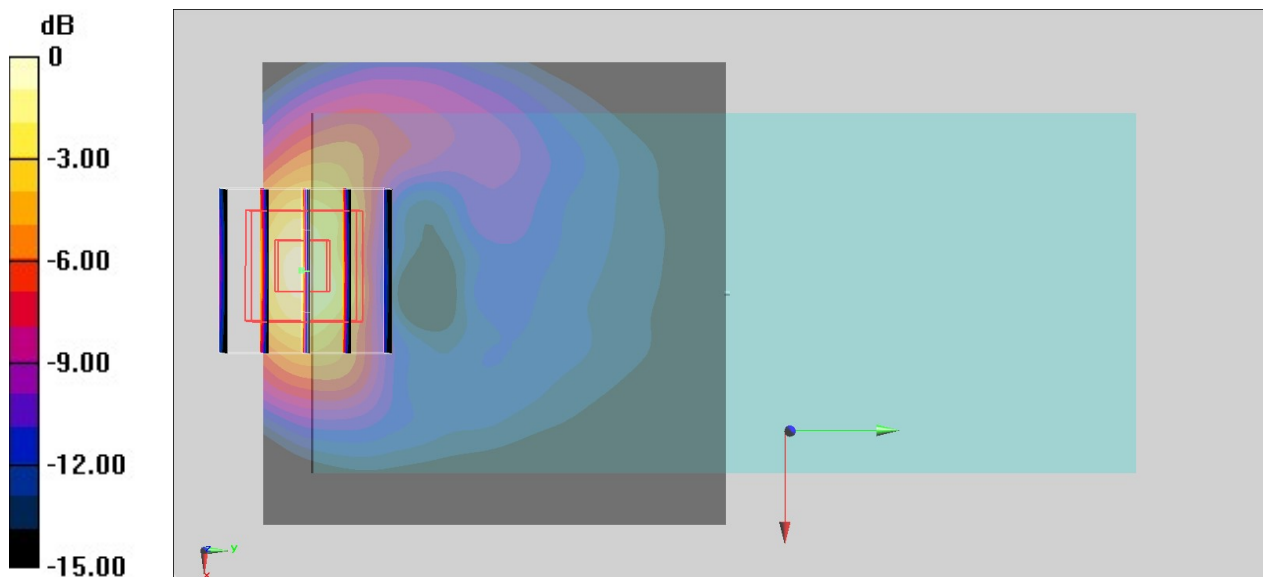
Communication System: WCDMA; Frequency: 1907.6 MHz; Duty Cycle: 1:1
Medium: HSL_1900_200313 Medium parameters used: $f = 1908$ MHz; $\sigma = 1.462$ S/m; $\epsilon_r = 41.011$;
 $\rho = 1000$ kg/m³
Ambient Temperature : 23.4 °C ; Liquid Temperature : 22.4 °C

DASY5 Configuration

- Probe: EX3DV4 - SN3925; ConvF(8.46, 8.46, 8.46) @ 1907.6 MHz; Calibrated: 2019/5/24
- Sensor-Surface: 1.4mm (Mechanical Surface Detection)
- Electronics: DAE4 Sn778; Calibrated: 2019/5/21
- Phantom: Twin-SAM V5.0 (30deg probe tilt); Type: QD 000 P40 CD; Serial: 1885
- Measurement SW: DASY52, Version 52.10 (2); SEMCAD X Version 14.6.12 (7450)

Area Scan (61x61x1): Interpolated grid: dx=1.500 mm, dy=1.500 mm
Maximum value of SAR (interpolated) = 1.19 W/kg

Zoom Scan (5x5x7)/Cube 0: Measurement grid: dx=8mm, dy=8mm, dz=5mm
Reference Value = 19.67 V/m; Power Drift = -0.07 dB
Peak SAR (extrapolated) = 1.68 W/kg
SAR(1 g) = 0.837 W/kg; SAR(10 g) = 0.389 W/kg
Maximum value of SAR (measured) = 1.37 W/kg



0 dB = 1.37 W/kg = 1.37 dBW/kg

#55_WCDMA IV_RMC 12.2Kbps_Back_5mm_Ch1513

Communication System: WCDMA; Frequency: 1752.6 MHz; Duty Cycle: 1:1

Medium: HSL_1750_200313 Medium parameters used: $f = 1753$ MHz; $\sigma = 1.38$ S/m; $\epsilon_r = 39.639$; $\rho = 1000$ kg/m³

Ambient Temperature : 23.5 °C ; Liquid Temperature : 22.5 °C

DASY5 Configuration:

- Probe: EX3DV4 - SN3925; ConvF(8.7, 8.7, 8.7) @ 1752.6 MHz; Calibrated: 2019/9/20
- Sensor-Surface: 1.4mm (Mechanical Surface Detection)
- Electronics: DAE4 Sn778; Calibrated: 2019/5/21
- Phantom: Twin-SAM V5.0 (30deg probe tilt); Type: QD 000 P40 CD; Serial: 1885
- Measurement SW: DASY52, Version 52.10 (2); SEMCAD X Version 14.6.12 (7450)

Area Scan (81x61x1): Interpolated grid: dx=1.500 mm, dy=1.500 mm

Maximum value of SAR (interpolated) = 1.30 W/kg

Zoom Scan (5x5x7)/Cube 0: Measurement grid: dx=8mm, dy=8mm, dz=5mm

Reference Value = 24.76 V/m; Power Drift = -0.10 dB

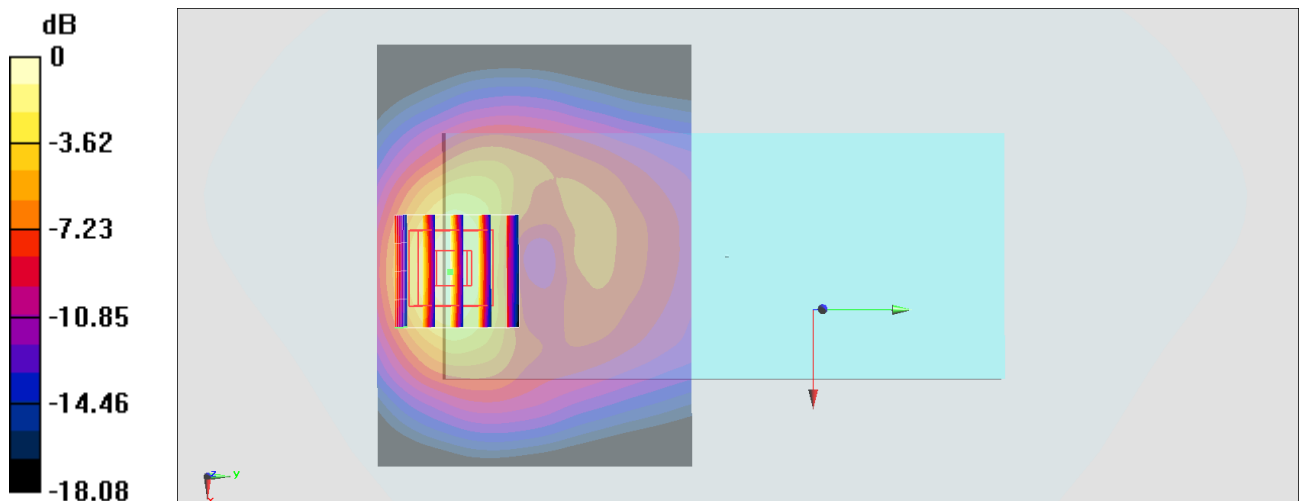
Peak SAR (extrapolated) = 1.63 W/kg

SAR(1 g) = 0.916 W/kg; SAR(10 g) = 0.482 W/kg

Smallest distance from peaks to all points 3 dB below = 10.1 mm

Ratio of SAR at M2 to SAR at M1 = 57.5%

Maximum value of SAR (measured) = 1.37 W/kg



0 dB = 1.37 W/kg = 1.37 dBW/kg

#56_WCDMA V_RMC 12.2Kbps_Back_5mm_Ch4132

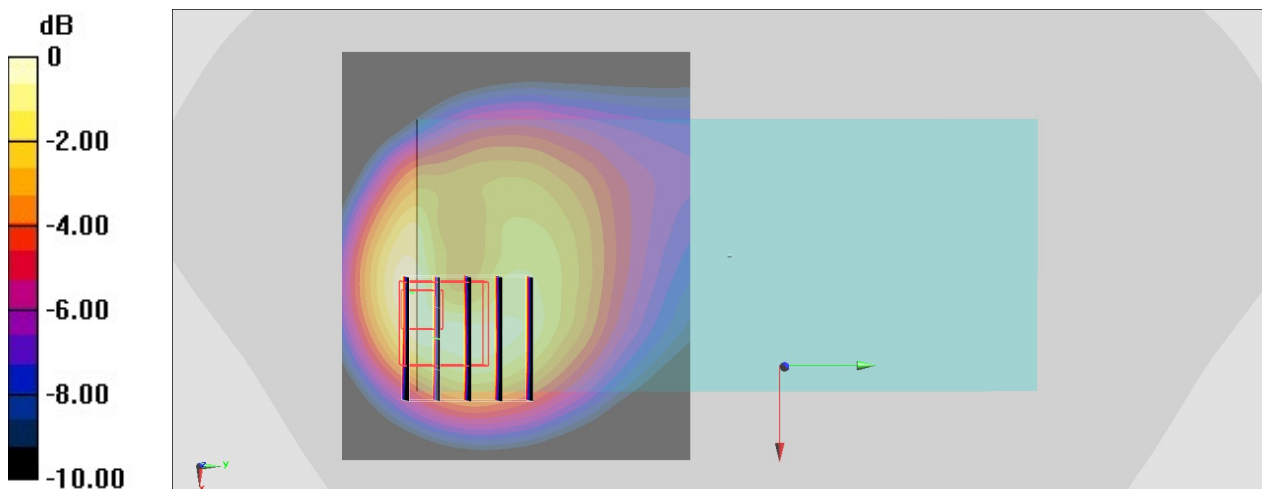
Communication System: WCDMA; Frequency: 826.4 MHz; Duty Cycle: 1:1
Medium: HSL_850_200223 Medium parameters used : $f = 826.4$ MHz; $\sigma = 0.882$ S/m; $\epsilon_r = 42.35$;
 $\rho = 1000$ kg/m³
Ambient Temperature : 23.5 °C ; Liquid Temperature : 22.5 °C

DASY5 Configuration

- Probe: EX3DV4 - SN3925; ConvF(10.18, 10.18, 10.18) @ 826.4 MHz; Calibrated: 2019/5/24
- Sensor-Surface: 1.4mm (Mechanical Surface Detection)
- Electronics: DAE4 Sn778; Calibrated: 2019/5/21
- Phantom: Twin-SAM V5.0 (30deg probe tilt); Type: QD 000 P40 CD; Serial: 1885
- Measurement SW: DASY52, Version 52.10 (2); SEMCAD X Version 14.6.12 (7450)

Area Scan (71x61x1): Interpolated grid: dx=1.500 mm, dy=1.500 mm
Maximum value of SAR (interpolated) = 0.624 W/kg

Zoom Scan (5x5x7)/Cube 0: Measurement grid: dx=8mm, dy=8mm, dz=5mm
Reference Value = 24.10 V/m; Power Drift = -0.05 dB
Peak SAR (extrapolated) = 1.02 W/kg
SAR(1 g) = 0.512 W/kg; SAR(10 g) = 0.283 W/kg
Maximum value of SAR (measured) = 0.615 W/kg



0 dB = 0.615 W/kg = -2.11 dBW/kg

#57_CDMA BC0_1xRTT RC3 SO32_Back_5mm_Ch384

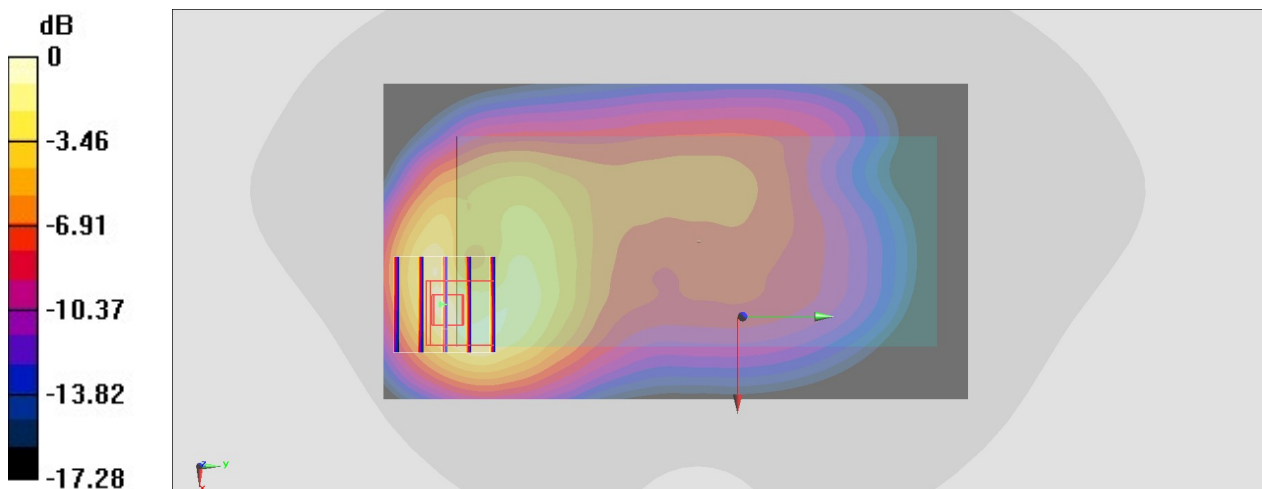
Communication System: CDMA; Frequency: 836.52 MHz; Duty Cycle: 1:1
Medium: HSL_850_200223 Medium parameters used: $f = 837$ MHz; $\sigma = 0.907$ S/m; $\epsilon_r = 42.031$; $\rho = 1000$ kg/m³
Ambient Temperature : 23.5 °C ; Liquid Temperature : 22.5 °C

DASY5 Configuration

- Probe: EX3DV4 - SN3925; ConvF(10.18, 10.18, 10.18) @ 836.52 MHz; Calibrated: 2019/5/24
- Sensor-Surface: 1.4mm (Mechanical Surface Detection)
- Electronics: DAE4 Sn778; Calibrated: 2019/5/21
- Phantom: Twin-SAM V5.0 (30deg probe tilt); Type: QD 000 P40 CD; Serial: 1885
- Measurement SW: DASY52, Version 52.10 (2); SEMCAD X Version 14.6.12 (7450)

Area Scan (71x131x1): Interpolated grid: dx=1.500 mm, dy=1.500 mm
Maximum value of SAR (interpolated) = 0.980 W/kg

Zoom Scan (5x5x7)/Cube 0: Measurement grid: dx=8mm, dy=8mm, dz=5mm
Reference Value = 34.49 V/m; Power Drift = -0.11 dB
Peak SAR (extrapolated) = 1.54 W/kg
SAR(1 g) = 0.659 W/kg; SAR(10 g) = 0.364 W/kg
Maximum value of SAR (measured) = 1.16 W/kg



0 dB = 1.16 W/kg = 0.64 dBW/kg

#58_CDMA BC1_1xRTT RC3 SO32_Back_5mm_Ch1175

Communication System: CDMA; Frequency: 1908.75 MHz; Duty Cycle: 1:1

Medium: HSL_1900_200315 Medium parameters used: $f = 1909$ MHz; $\sigma = 1.423$ S/m; $\epsilon_r = 40.681$; $\rho = 1000$ kg/m³

Ambient Temperature : 23.5 °C ; Liquid Temperature : 22.5 °C

DASY5 Configuration:

- Probe: EX3DV4 - SN3925; ConvF(8.35, 8.35, 8.35) @ 1908.75 MHz; Calibrated: 2019/9/20
- Sensor-Surface: 1.4mm (Mechanical Surface Detection)
- Electronics: DAE4 Sn778; Calibrated: 2019/5/21
- Phantom: SAM_Right; Type: SAM; Serial: TP:1446
- Measurement SW: DASY52, Version 52.10 (4); SEMCAD X Version 14.6.14 (7483)

Area Scan (81x61x1): Interpolated grid: dx=1.500 mm, dy=1.500 mm

Maximum value of SAR (interpolated) = 1.36 W/kg

Zoom Scan (5x5x7)/Cube 0: Measurement grid: dx=8mm, dy=8mm, dz=5mm

Reference Value = 28.30 V/m; Power Drift = -0.11 dB

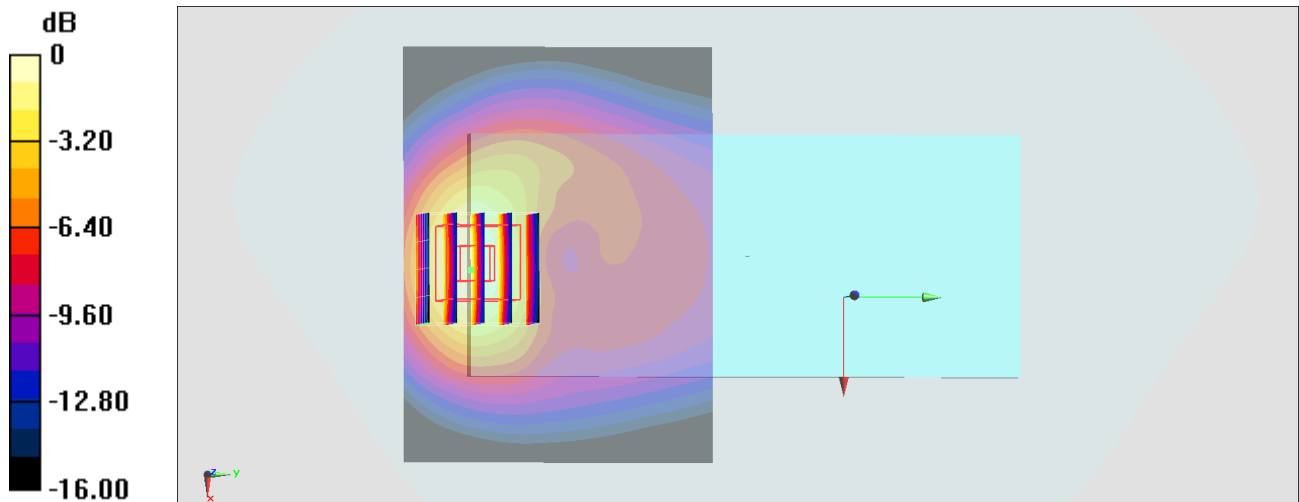
Peak SAR (extrapolated) = 1.49 W/kg

SAR(1 g) = 0.878 W/kg; SAR(10 g) = 0.485 W/kg

Smallest distance from peaks to all points 3 dB below = 11.2 mm

Ratio of SAR at M2 to SAR at M1 = 60.1%

Maximum value of SAR (measured) = 1.26 W/kg



0 dB = 1.26 W/kg = 1.00 dBW/kg

#59_LTE Band 7_20M_QPSK_1_0_Back_5mm_Ch21100

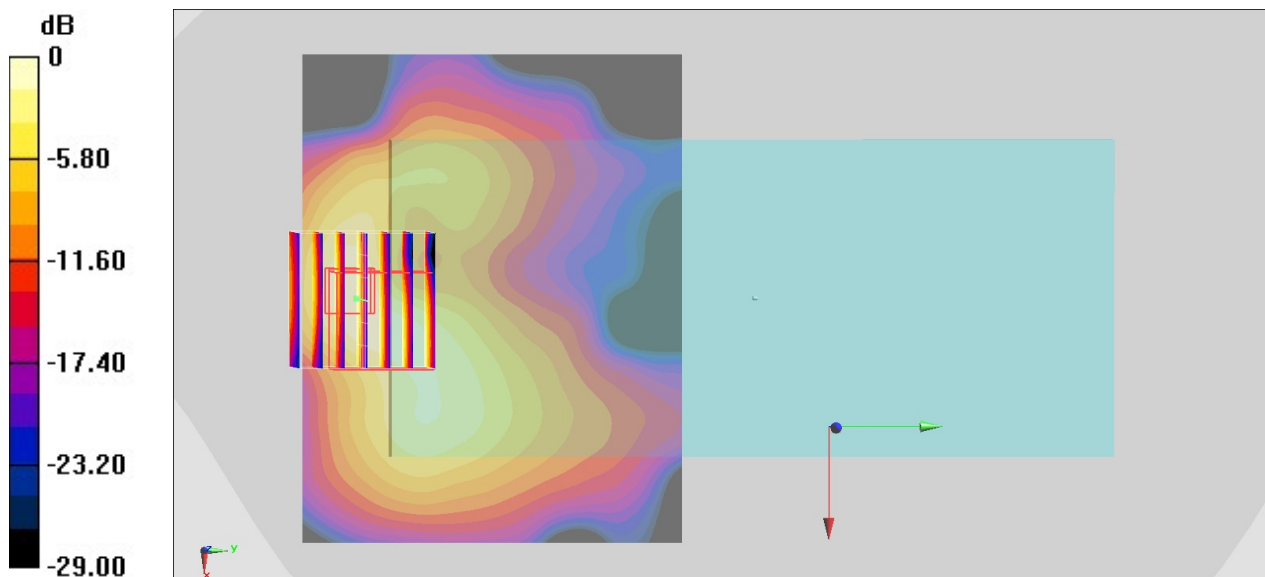
Communication System: LTE ; Frequency: 2535 MHz;Duty Cycle: 1:1
Medium: HSL_2600_200314 Medium parameters used : $f = 2535$ MHz; $\sigma = 1.952$ S/m; $\epsilon_r = 38.232$;
 $\rho = 1000$ kg/m³
Ambient Temperature : 23.6 °C ; Liquid Temperature : 22.6 °C

DASY5 Configuration

- Probe: EX3DV4 - SN3728;ConvF(7.11, 7.11, 7.11) @ 2535 MHz;Calibrated: 2019/1/15
- Sensor-Surface: 1.4mm (Mechanical Surface Detection)
- Electronics: DAE3 Sn495; Calibrated: 2019/5/21
- Phantom: Twin-SAM V5.0 (30deg probe tilt); Type: QD 000 P40 CD; Serial: 1885
- Measurement SW: DASY52, Version 52.10 (2); SEMCAD X Version 14.6.12 (7450)

Area Scan (91x71x1): Interpolated grid: dx=1.200 mm, dy=1.200 mm
Maximum value of SAR (interpolated) = 0.712 W/kg

Zoom Scan (7x7x7)/Cube 0: Measurement grid: dx=5mm, dy=5mm, dz=5mm
Reference Value = 15.09 V/m; Power Drift = 0.02 dB
Peak SAR (extrapolated) = 0.957 W/kg
SAR(1 g) = 0.400 W/kg; SAR(10 g) = 0.173 W/kg
Maximum value of SAR (measured) = 0.729 W/kg



0 dB = 0.729 W/kg = -1.37 dBW/kg

#60_LTE Band 12_10M_QPSK_1_0_Back_5mm_Ch23095

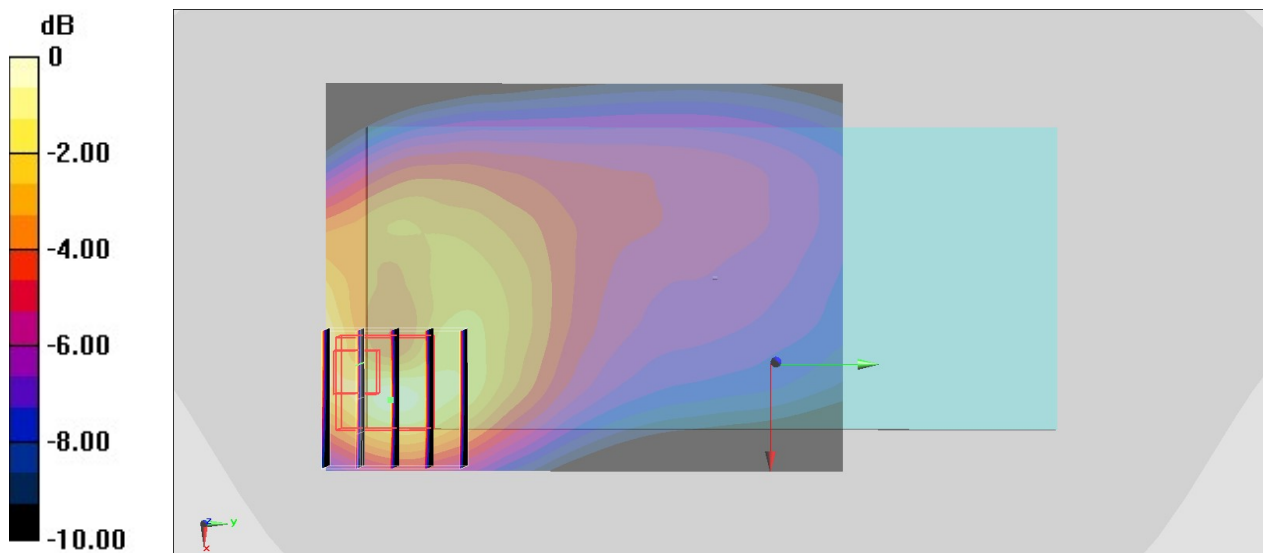
Communication System: LTE; Frequency: 707.5 MHz; Duty Cycle: 1:1
Medium: HSL_750_200220 Medium parameters used : $f = 707.5$ MHz; $\sigma = 0.849$ S/m; $\epsilon_r = 43.504$;
 $\rho = 1000$ kg/m³
Ambient Temperature : 23.4 °C ; Liquid Temperature : 22.4 °C

DASY5 Configuration

- Probe: EX3DV4 - SN3925; ConvF(10.39, 10.39, 10.39) @ 707.5 MHz; Calibrated: 2019/5/24
- Sensor-Surface: 1.4mm (Mechanical Surface Detection)
- Electronics: DAE4 Sn778; Calibrated: 2019/5/21
- Phantom: Twin-SAM V5.0 (30deg probe tilt); Type: QD 000 P40 CD; Serial: 1885
- Measurement SW: DASY52, Version 52.10 (2); SEMCAD X Version 14.6.12 (7450)

Area Scan (61x81x1): Interpolated grid: dx=1.500 mm, dy=1.500 mm
Maximum value of SAR (interpolated) = 0.665 W/kg

Zoom Scan (5x5x7)/Cube 0: Measurement grid: dx=8mm, dy=8mm, dz=5mm
Reference Value = 28.16 V/m; Power Drift = -0.10 dB
Peak SAR (extrapolated) = 0.863 W/kg
SAR(1 g) = 0.428 W/kg; SAR(10 g) = 0.238 W/kg
Maximum value of SAR (measured) = 0.702 W/kg



0 dB = 0.702 W/kg = -1.54 dBW/kg

#61_LTE Band 13_10M_QPSK_1_0_Back_5mm_Ch23230

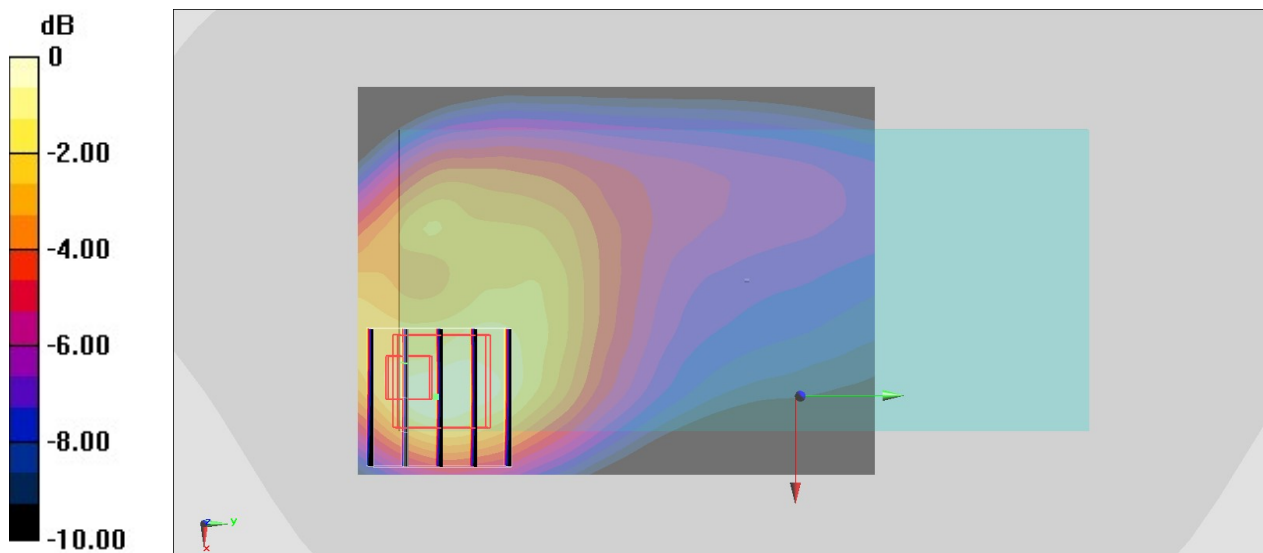
Communication System: LTE; Frequency: 782 MHz; Duty Cycle: 1:1
Medium: HSL_750_200221 Medium parameters used: $f = 782 \text{ MHz}$; $\sigma = 0.905 \text{ S/m}$; $\epsilon_r = 43.059$; $\rho = 1000 \text{ kg/m}^3$
Ambient Temperature : $23.4 \text{ }^\circ\text{C}$; Liquid Temperature : $22.4 \text{ }^\circ\text{C}$

DASY5 Configuration

- Probe: EX3DV4 - SN3925; ConvF(10.39, 10.39, 10.39) @ 782 MHz; Calibrated: 2019/5/24
- Sensor-Surface: 1.4mm (Mechanical Surface Detection)
- Electronics: DAE4 Sn778; Calibrated: 2019/5/21
- Phantom: Twin-SAM V5.0 (30deg probe tilt); Type: QD 000 P40 CD; Serial: 1885
- Measurement SW: DASY52, Version 52.10 (2); SEMCAD X Version 14.6.12 (7450)

Area Scan (61x81x1): Interpolated grid: $dx=1.500 \text{ mm}$, $dy=1.500 \text{ mm}$
Maximum value of SAR (interpolated) = 1.15 W/kg

Zoom Scan (5x5x7)/Cube 0: Measurement grid: $dx=8\text{mm}$, $dy=8\text{mm}$, $dz=5\text{mm}$
Reference Value = 33.30 V/m ; Power Drift = -0.13 dB
Peak SAR (extrapolated) = 1.30 W/kg
SAR(1 g) = 0.704 W/kg; SAR(10 g) = 0.416 W/kg
Maximum value of SAR (measured) = 1.08 W/kg



0 dB = 1.08 W/kg = 0.33 dBW/kg

#62_LTE Band 25_20M_QPSK_1_0_Front_14mm_Ch26590

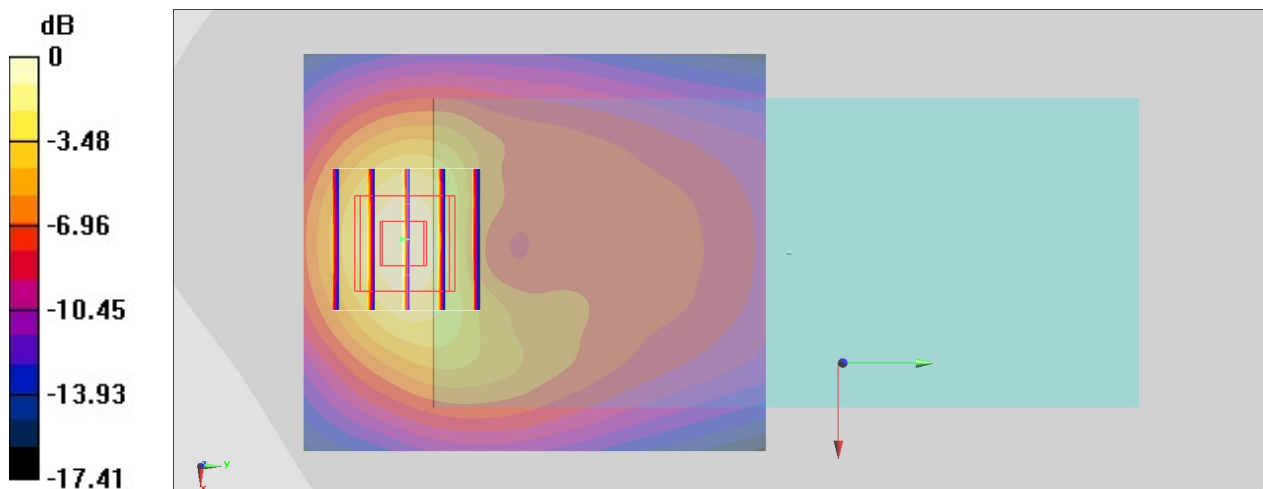
Communication System: LTE; Frequency: 1905 MHz; Duty Cycle: 1:1
Medium: HSL_1900_200228 Medium parameters used : $f = 1905$ MHz; $\sigma = 1.432$ S/m; $\epsilon_r = 40.78$;
 $\rho = 1000$ kg/m³
Ambient Temperature : 23.8 °C ; Liquid Temperature : 22.8 °C

DASY5 Configuration

- Probe: EX3DV4 - SN3925; ConvF(8.46, 8.46, 8.46) @ 1905 MHz; Calibrated: 2019/5/24
- Sensor-Surface: 1.4mm (Mechanical Surface Detection)
- Electronics: DAE4 Sn778; Calibrated: 2019/5/21
- Phantom: Twin-SAM V5.0 (30deg probe tilt); Type: QD 000 P40 CD; Serial: 1885
- Measurement SW: DASY52, Version 52.10 (2); SEMCAD X Version 14.6.12 (7450)

Area Scan (61x71x1): Interpolated grid: dx=1.500 mm, dy=1.500 mm
Maximum value of SAR (interpolated) = 1.03 W/kg

Zoom Scan (5x5x7)/Cube 0: Measurement grid: dx=8mm, dy=8mm, dz=5mm
Reference Value = 17.11 V/m; Power Drift = -0.13 dB
Peak SAR (extrapolated) = 1.26 W/kg
SAR(1 g) = 0.729 W/kg; SAR(10 g) = 0.398 W/kg
Maximum value of SAR (measured) = 1.07 W/kg



0 dB = 1.07 W/kg = 0.29 dBW/kg

#63_LTE Band 26_15M_QPSK_1_74_Back_5mm_Ch26865

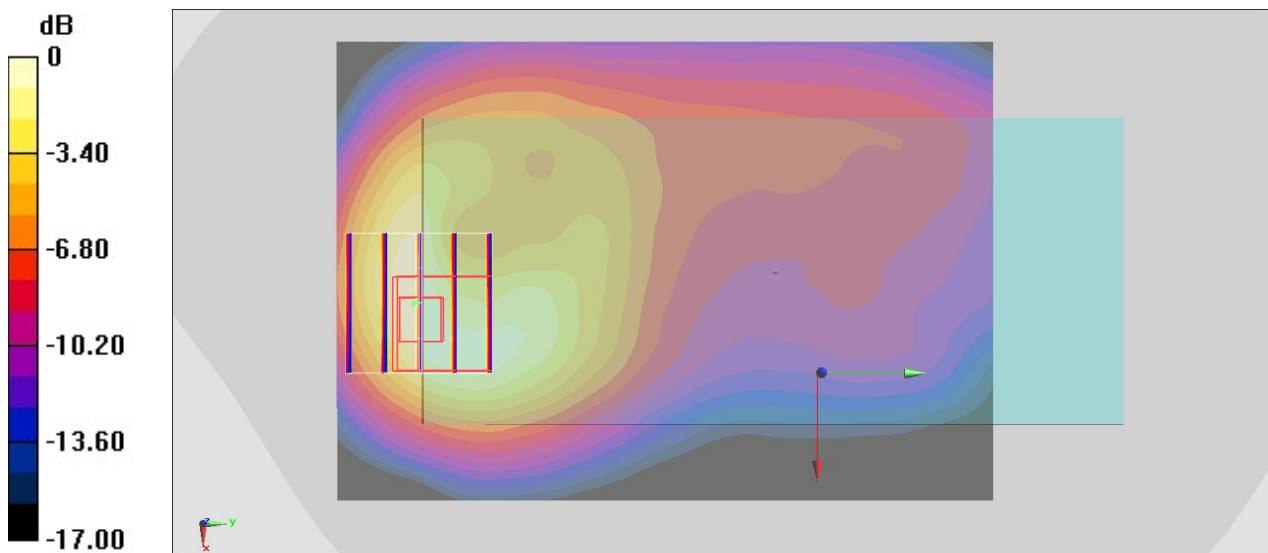
Communication System: LTE ; Frequency: 831.5 MHz;Duty Cycle: 1:1
 Medium: HSL_850_200219 Medium parameters used : $f = 831.5 \text{ MHz}$; $\sigma = 0.866 \text{ S/m}$; $\epsilon_r = 42.534$;
 $\rho = 1000 \text{ kg/m}^3$
 Ambient Temperature : $23.4 \text{ }^\circ\text{C}$; Liquid Temperature : $22.4 \text{ }^\circ\text{C}$

DASY5 Configuration

- Probe: EX3DV4 - SN3925;ConvF(10.18, 10.18, 10.18) @ 831.5 MHz;Calibrated: 2019/5/24
- Sensor-Surface: 1.4mm (Mechanical Surface Detection)
- Electronics: DAE4 Sn778; Calibrated: 2019/5/21
- Phantom: Twin-SAM V5.0 (30deg probe tilt); Type: QD 000 P40 CD; Serial: 1885
- Measurement SW: DASY52, Version 52.10 (2); SEMCAD X Version 14.6.12 (7450)

Area Scan (71x101x1): Interpolated grid: $dx=1.500 \text{ mm}$, $dy=1.500 \text{ mm}$
 Maximum value of SAR (interpolated) = 1.10 W/kg

Zoom Scan (5x5x7)/Cube 0: Measurement grid: $dx=8\text{mm}$, $dy=8\text{mm}$, $dz=5\text{mm}$
 Reference Value = 35.71 V/m ; Power Drift = -0.16 dB
 Peak SAR (extrapolated) = 1.47 W/kg
SAR(1 g) = 0.688 W/kg ; SAR(10 g) = 0.382 W/kg
 Maximum value of SAR (measured) = 1.14 W/kg



0 dB = 1.14 W/kg = 0.57 dBW/kg

#64_LTE Band 30_10M_QPSK_25_0_Back_5mm_Ch27710

Communication System: LTE ; Frequency: 2310 MHz;Duty Cycle: 1:1

Medium: HSL_2300_200313 Medium parameters used: $f = 2310$ MHz; $\sigma = 1.672$ S/m; $\epsilon_r = 40.11$; $\rho = 1000$ kg/m³

Ambient Temperature : 23.5 °C ; Liquid Temperature : 22.5 °C

DASY5 Configuration:

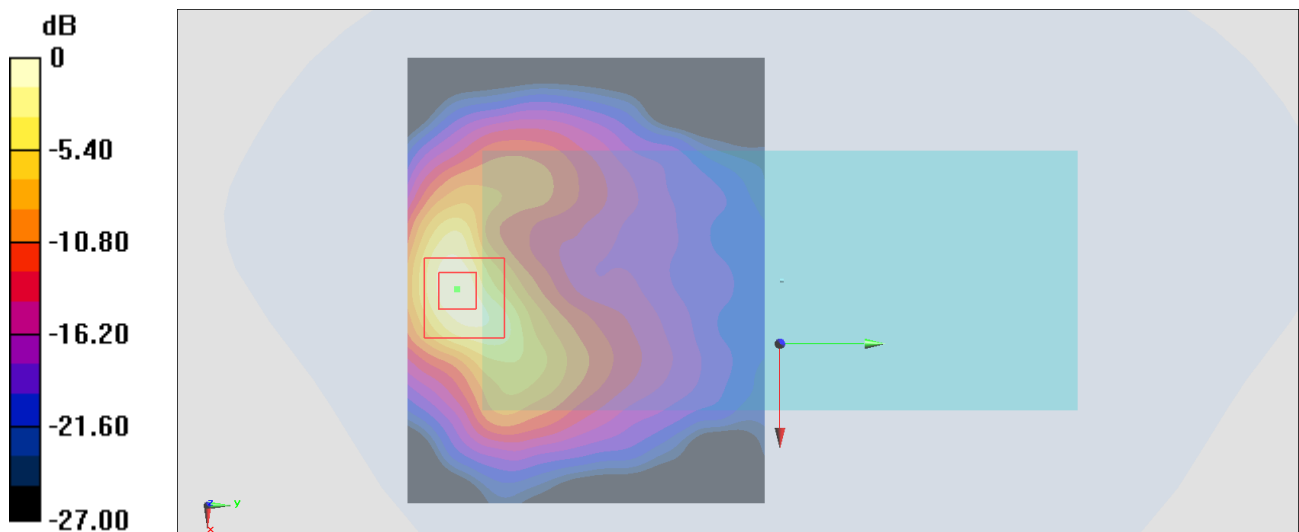
- Probe: EX3DV4 - SN3925; ConvF(7.87, 7.87, 7.87) @ 2310 MHz; Calibrated: 2019/9/20
- Sensor-Surface: 1.4mm (Mechanical Surface Detection)
- Electronics: DAE4 Sn778; Calibrated: 2019/5/21
- Phantom: SAM_Right; Type: SAM; Serial: TP:1446
- Measurement SW: DASY52, Version 52.10 (2);SEMCAD X Version 14.6.12 (7450)

Area Scan (101x81x1): Interpolated grid: dx=1.200 mm, dy=1.200 mm

Reference Value = 11.41 V/m; Power Drift = -0.07 dB

Fast SAR: SAR(1 g) = 0.517 W/kg; SAR(10 g) = 0.223 W/kg

Maximum value of SAR (interpolated) = 0.899 W/kg



0 dB = 0.899 W/kg = -0.46 dBW/kg

#65_LTE Band 66_20M_QPSK_1_0_Front_14mm_Ch132322

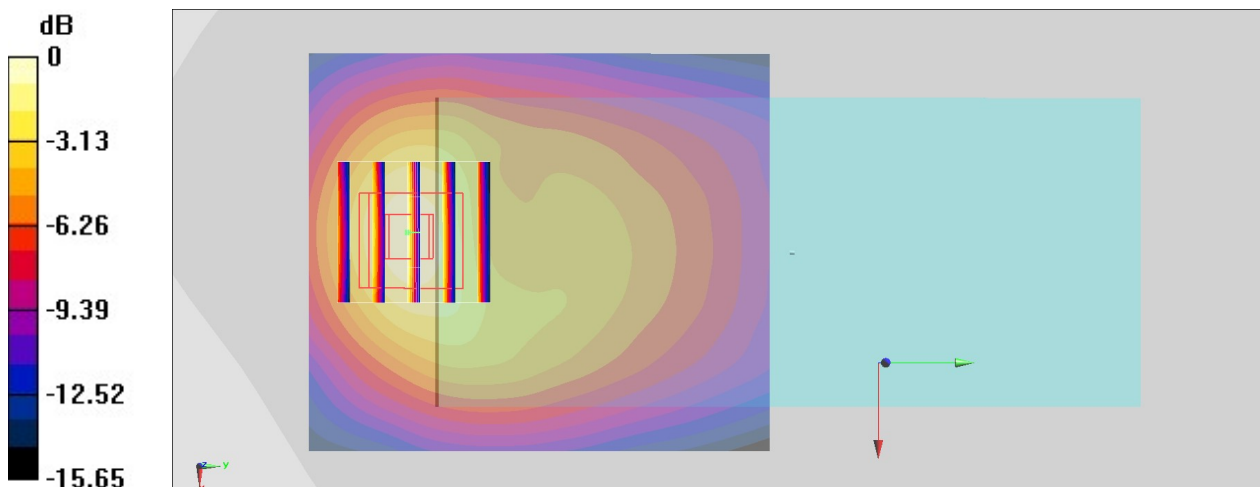
Communication System: LTE; Frequency: 1745 MHz; Duty Cycle: 1:1
Medium: HSL_1750_200228 Medium parameters used : $f = 1745$ MHz; $\sigma = 1.392$ S/m; $\epsilon_r = 41.094$;
 $\rho = 1000$ kg/m³
Ambient Temperature : 23.8 °C ; Liquid Temperature : 22.8 °C

DASY5 Configuration

- Probe: EX3DV4 - SN3925; ConvF(8.84, 8.84, 8.84) @ 1745 MHz; Calibrated: 2019/5/24
- Sensor-Surface: 1.4mm (Mechanical Surface Detection)
- Electronics: DAE4 Sn778; Calibrated: 2019/5/21
- Phantom: Twin-SAM V5.0 (30deg probe tilt); Type: QD 000 P40 CD; Serial: 1885
- Measurement SW: DASY52, Version 52.10 (2); SEMCAD X Version 14.6.12 (7450)

Area Scan (61x71x1): Interpolated grid: dx=1.500 mm, dy=1.500 mm
Maximum value of SAR (interpolated) = 0.696 W/kg

Zoom Scan (5x5x7)/Cube 0: Measurement grid: dx=8mm, dy=8mm, dz=5mm
Reference Value = 16.42 V/m; Power Drift = -0.11 dB
Peak SAR (extrapolated) = 0.870 W/kg
SAR(1 g) = 0.524 W/kg; SAR(10 g) = 0.298 W/kg
Maximum value of SAR (measured) = 0.754 W/kg



0 dB = 0.754 W/kg = -1.23 dBW/kg

#66_LTE Band 71_20M_QPSK_1_0_Back_5mm_Ch133322

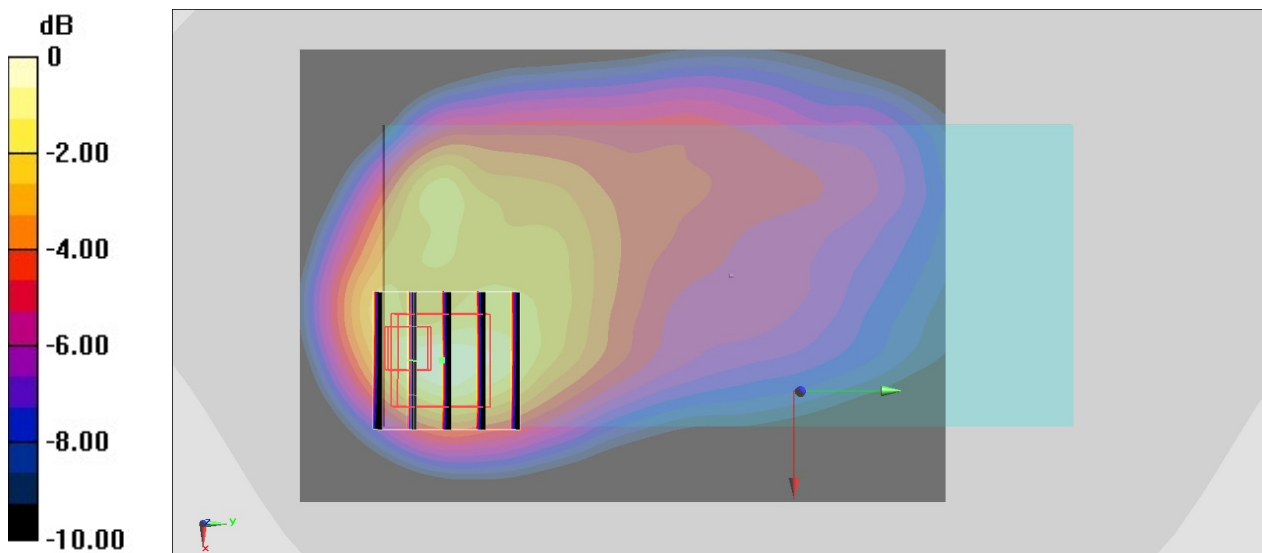
Communication System: LTE; Frequency: 683 MHz; Duty Cycle: 1:1
Medium: HSL_750_200221 Medium parameters used: $f = 683 \text{ MHz}$; $\sigma = 0.874 \text{ S/m}$; $\epsilon_r = 43.752$; $\rho = 1000 \text{ kg/m}^3$
Ambient Temperature : $23.4 \text{ }^\circ\text{C}$; Liquid Temperature : $22.4 \text{ }^\circ\text{C}$

DASY5 Configuration

- Probe: EX3DV4 - SN3925; ConvF(10.39, 10.39, 10.39) @ 683 MHz; Calibrated: 2019/5/24
- Sensor-Surface: 1.4mm (Mechanical Surface Detection)
- Electronics: DAE4 Sn778; Calibrated: 2019/5/21
- Phantom: Twin-SAM V5.0 (30deg probe tilt); Type: QD 000 P40 CD; Serial: 1885
- Measurement SW: DASY52, Version 52.10 (2); SEMCAD X Version 14.6.12 (7450)

Area Scan (71x101x1): Interpolated grid: $dx=1.500 \text{ mm}$, $dy=1.500 \text{ mm}$
Maximum value of SAR (interpolated) = 0.747 W/kg

Zoom Scan (5x5x7)/Cube 0: Measurement grid: $dx=8\text{mm}$, $dy=8\text{mm}$, $dz=5\text{mm}$
Reference Value = 26.91 V/m ; Power Drift = -0.05 dB
Peak SAR (extrapolated) = 0.975 W/kg
SAR(1 g) = 0.438 W/kg ; SAR(10 g) = 0.237 W/kg
Maximum value of SAR (measured) = 0.749 W/kg



0 dB = $0.749 \text{ W/kg} = -1.26 \text{ dBW/kg}$

#67_LTE Band 41_20M_QPSK_1_99_Back_5mm_Ch41490

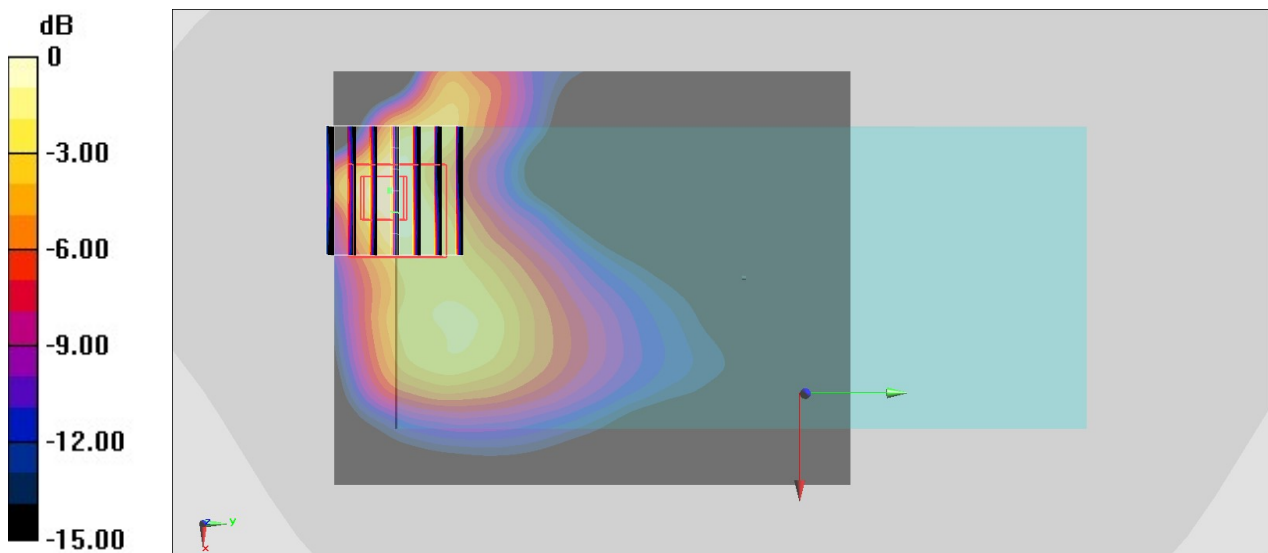
Communication System: LTE; Frequency: 2680 MHz; Duty Cycle: 1:1.59
 Medium: HSL_2600_200222 Medium parameters used: $f = 2680$ MHz; $\sigma = 2.068$ S/m; $\epsilon_r = 38.144$;
 $\rho = 1000$ kg/m³
 Ambient Temperature : 23.4 °C ; Liquid Temperature : 22.4 °C

DASY5 Configuration

- Probe: EX3DV4 - SN3925; ConvF(7.43, 7.43, 7.43) @ 2680 MHz; Calibrated: 2019/5/24
- Sensor-Surface: 1.4mm (Mechanical Surface Detection)
- Electronics: DAE4 Sn778; Calibrated: 2019/5/21
- Phantom: Twin-SAM V5.0 (30deg probe tilt); Type: QD 000 P40 CD; Serial: 1885
- Measurement SW: DASY52, Version 52.10 (2); SEMCAD X Version 14.6.12 (7450)

Area Scan (81x101x1): Interpolated grid: dx=1.200 mm, dy=1.200 mm
 Maximum value of SAR (interpolated) = 0.618 W/kg

Zoom Scan (7x7x7)/Cube 0: Measurement grid: dx=5mm, dy=5mm, dz=5mm
 Reference Value = 2.877 V/m; Power Drift = -0.09 dB
 Peak SAR (extrapolated) = 0.736 W/kg
SAR(1 g) = 0.328 W/kg; SAR(10 g) = 0.145 W/kg
 Maximum value of SAR (measured) = 0.574 W/kg



0 dB = 0.574 W/kg = -2.41 dBW/kg

#68_FR1 n5_20M_PI/2 BPSK_1_1_Back_5mm_Ch167300

Communication System: LTE; Frequency: 837 MHz; Duty Cycle: 1:1

Medium: HSL_850_200226 Medium parameters used: $f = 837$ MHz; $\sigma = 0.934$ S/m; $\epsilon_r = 43.398$; $\rho = 1000$ kg/m³

Ambient Temperature : 23.3 °C ; Liquid Temperature : 22.3 °C

DASY5 Configuration:

- Probe: EX3DV4 - SN3728; ConvF(9.51, 9.51, 9.51) @ 837 MHz; Calibrated: 2020/2/4
- Sensor-Surface: 1.4mm (Mechanical Surface Detection)
- Electronics: DAE3 Sn495; Calibrated: 2019/5/21
- Phantom: SAM_Left; Type: QD000P40CD; Serial: TP:1815
- Measurement SW: DASY52, Version 52.10 (2); SEMCAD X Version 14.6.12 (7470)

Area Scan (71x131x1): Interpolated grid: dx=1.500 mm, dy=1.500 mm

Maximum value of SAR (interpolated) = 0.0937 W/kg

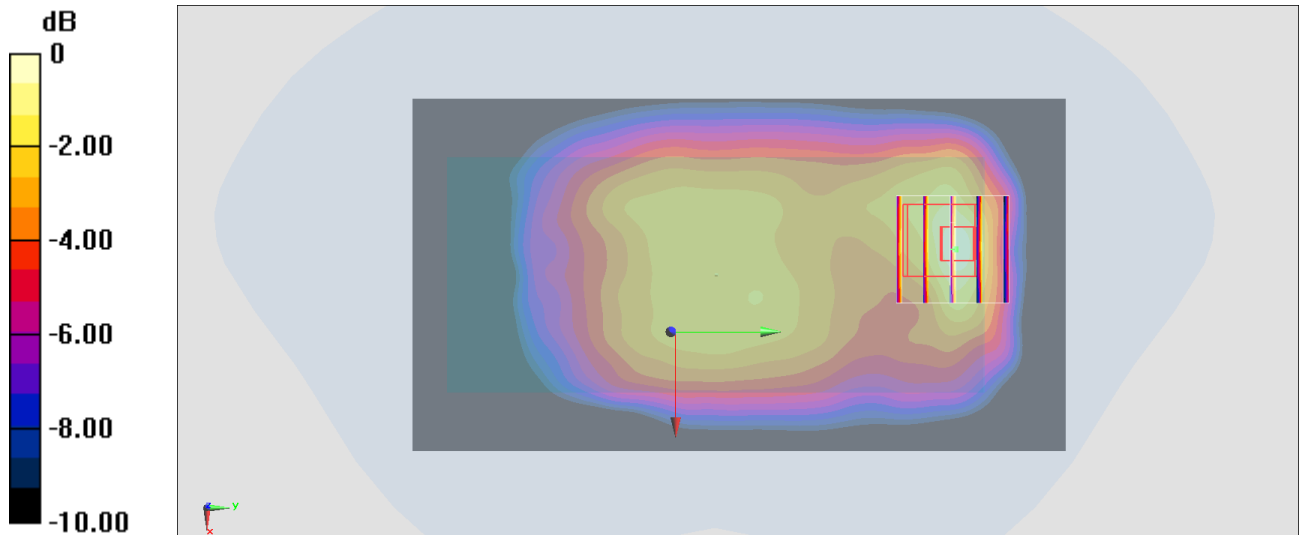
Zoom Scan (5x5x7)/Cube 0: Measurement grid: dx=8mm, dy=8mm, dz=5mm

Reference Value = 8.810 V/m; Power Drift = -0.11 dB

Peak SAR (extrapolated) = 0.104 W/kg

SAR(1 g) = 0.055 W/kg; SAR(10 g) = 0.033 W/kg

Maximum value of SAR (measured) = 0.0763 W/kg



0 dB = 0.0937 W/kg = -10.28 dBW/kg

#70_FR1 n66_20M_PI/2 BPSK_1_1_Back_5mm_Ch349000

Communication System: LTE; Frequency: 1745 MHz; Duty Cycle: 1:1

Medium: HSL_1750_200225 Medium parameters used : $f = 1745$ MHz; $\sigma = 1.381$ S/m; $\epsilon_r = 40.713$; $\rho = 1000$ kg/m³

Ambient Temperature : 23.3 °C ; Liquid Temperature : 22.3 °C

DASY5 Configuration:

- Probe: EX3DV4 - SN3728; ConvF(8.06, 8.06, 8.06) @ 1745 MHz; Calibrated: 2020/2/4
- Sensor-Surface: 1.4mm (Mechanical Surface Detection)
- Electronics: DAE3 Sn495; Calibrated: 2019/5/21
- Phantom: SAM_Left; Type: QD000P40CD; Serial: TP:1815
- Measurement SW: DASY52, Version 52.10 (2); SEMCAD X Version 14.6.12 (7470)

Area Scan (71x71x1): Interpolated grid: dx=1.500 mm, dy=1.500 mm

Maximum value of SAR (interpolated) = 0.989 W/kg

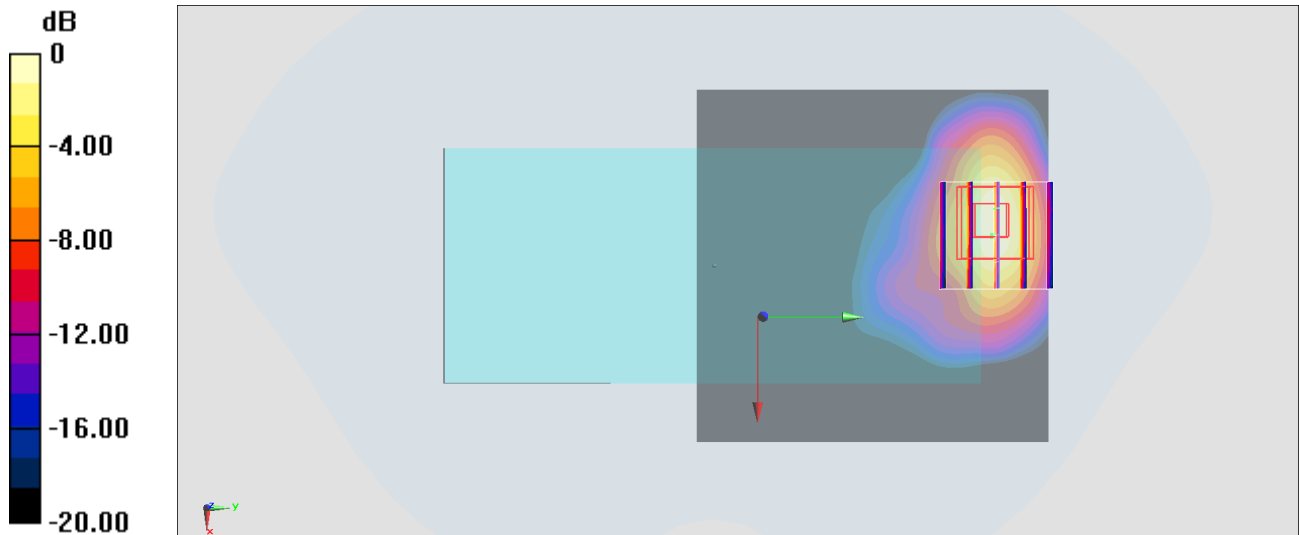
Zoom Scan (5x5x7)/Cube 0: Measurement grid: dx=8mm, dy=8mm, dz=5mm

Reference Value = 28.13 V/m; Power Drift = -0.13 dB

Peak SAR (extrapolated) = 1.58 W/kg

SAR(1 g) = 0.687 W/kg; SAR(10 g) = 0.301 W/kg

Maximum value of SAR (measured) = 1.27 W/kg



0 dB = 0.989 W/kg = -0.05 dBW/kg

#71_FR1 n71_20M_PI/2 BPSK_1_1_Back_5mm_Ch136100

Communication System: LTE; Frequency: 681 MHz; Duty Cycle: 1:1

Medium: HSL_750_200226 Medium parameters used: $f = 681$ MHz; $\sigma = 0.876$ S/m; $\epsilon_r = 44.114$; $\rho = 1000$ kg/m³

Ambient Temperature : 23.3 °C ; Liquid Temperature : 22.3 °C

DASY5 Configuration:

- Probe: EX3DV4 - SN3728; ConvF(9.67, 9.67, 9.67) @ 681 MHz; Calibrated: 2020/2/4
- Sensor-Surface: 1.4mm (Mechanical Surface Detection)
- Electronics: DAE3 Sn495; Calibrated: 2019/5/21
- Phantom: SAM_Left; Type: QD000P40CD; Serial: TP:1815
- Measurement SW: DASY52, Version 52.10 (2); SEMCAD X Version 14.6.12 (7470)

Area Scan (71x131x1): Interpolated grid: dx=1.500 mm, dy=1.500 mm

Maximum value of SAR (interpolated) = 0.172 W/kg

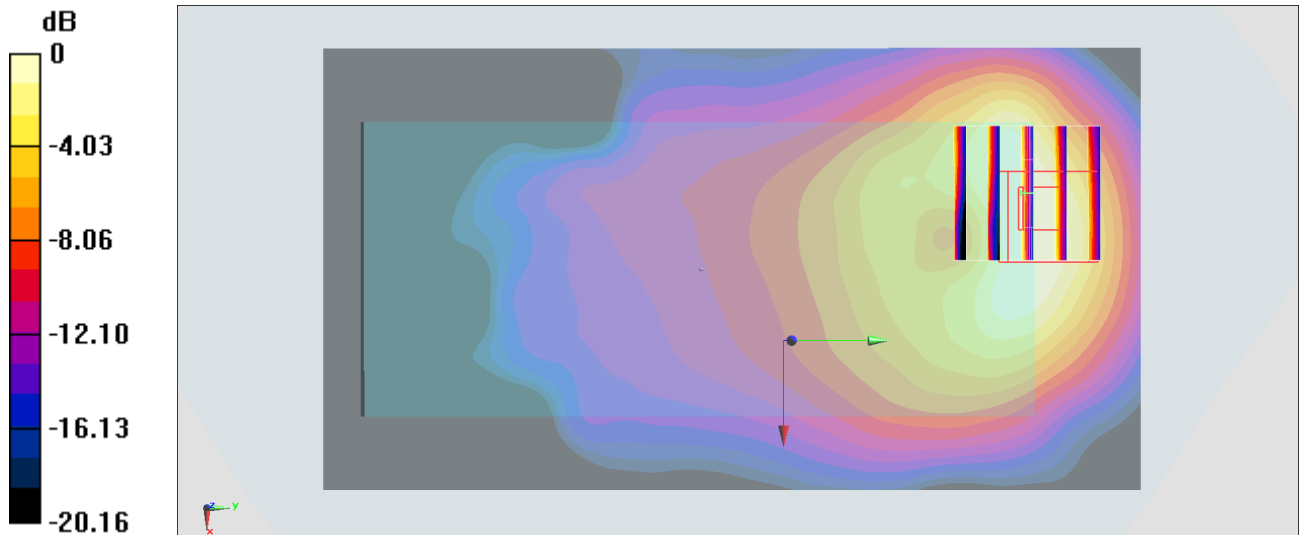
Zoom Scan (5x5x7)/Cube 0: Measurement grid: dx=8mm, dy=8mm, dz=5mm

Reference Value = 15.42 V/m; Power Drift = -0.16 dB

Peak SAR (extrapolated) = 0.316 W/kg

SAR(1 g) = 0.121 W/kg; SAR(10 g) = 0.056 W/kg

Maximum value of SAR (measured) = 0.194 W/kg



0 dB = 0.172 W/kg = -7.64 dBW/kg

#73_WLAN2.4GHz_802.11b 1Mbps_Back_5mm_Ch11;Ant 4+6

Communication System: 802.11b; Frequency: 2462 MHz; Duty Cycle: 1:1

Medium: HSL_2450_200221 Medium parameters used: $f = 2462$ MHz; $\sigma = 1.792$ S/m; $\epsilon_r = 38.961$; $\rho = 1000$ kg/m³

Ambient Temperature : 23.5 °C ; Liquid Temperature : 22.5 °C

DASY5 Configuration:

- Probe: EX3DV4 - SN3728; ConvF(7.33, 7.33, 7.33) @ 2462 MHz; Calibrated: 2020/2/4
- Sensor-Surface: 1.4mm (Mechanical Surface Detection)
- Electronics: DAE3 Sn495; Calibrated: 2019/5/21
- Phantom: SAM_Left; Type: QD000P40CD; Serial: TP:1815
- Measurement SW: DASY52, Version 52.10 (2); SEMCAD X Version 14.6.12 (7470)

Area Scan (91x71x1): Interpolated grid: dx=1.200 mm, dy=1.200 mm

Maximum value of SAR (interpolated) = 0.863 W/kg

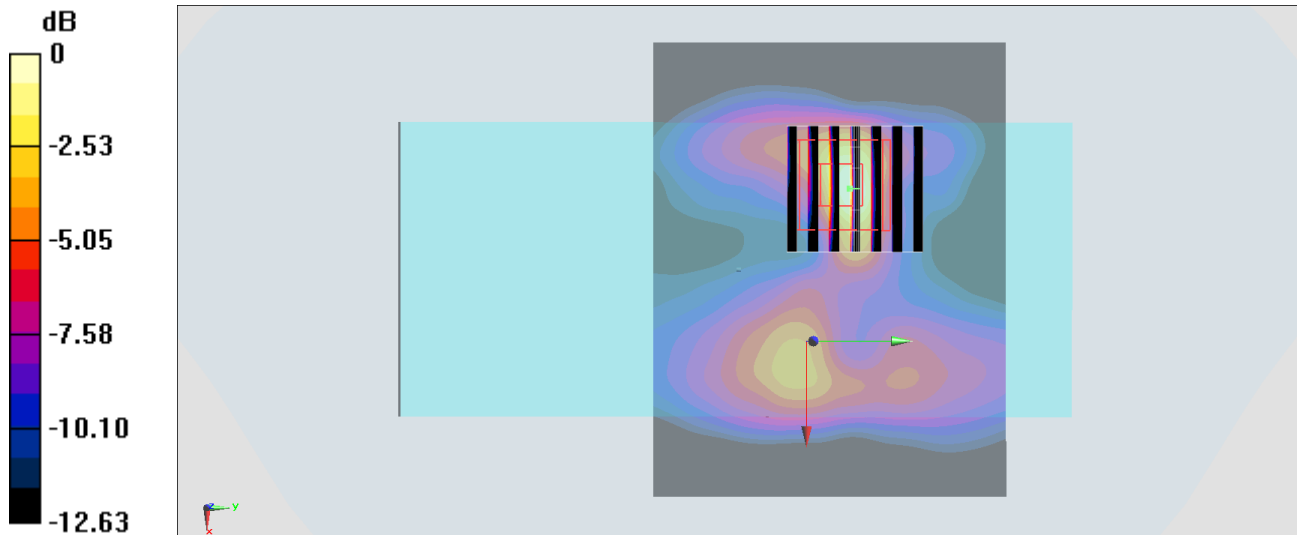
Zoom Scan (7x7x7)/Cube 0: Measurement grid: dx=5mm, dy=5mm, dz=5mm

Reference Value = 19.23 V/m; Power Drift = -0.09 dB

Peak SAR (extrapolated) = 1.49 W/kg

SAR(1 g) = 0.541 W/kg; SAR(10 g) = 0.193 W/kg

Maximum value of SAR (measured) = 1.01 W/kg



0 dB = 0.863 W/kg = -0.64 dBW/kg

#74_WLAN5GHz_802.11ac-VHT80 MCS0_Back_5mm_Ch58;Ant 3+6

Communication System: 802.11ac; Frequency: 5290 MHz; Duty Cycle: 1:1

Medium: HSL_5G_200224 Medium parameters used: $f = 5290$ MHz; $\sigma = 4.589$ S/m; $\epsilon_r = 36.593$; $\rho = 1000$ kg/m³

Ambient Temperature : 23.6 °C ; Liquid Temperature : 22.6 °C

DASY5 Configuration:

- Probe: EX3DV4 - SN3728; ConvF(5.14, 5.14, 5.14) @ 5290 MHz; Calibrated: 2020/2/4
- Sensor-Surface: 1.4mm (Mechanical Surface Detection)
- Electronics: DAE3 Sn495; Calibrated: 2019/5/21
- Phantom: SAM_Left; Type: QD000P40CD; Serial: TP:1815
- Measurement SW: DASY52, Version 52.10 (2); SEMCAD X Version 14.6.12 (7470)

Area Scan (101x111x1): Interpolated grid: dx=1.000 mm, dy=1.000 mm

Maximum value of SAR (interpolated) = 0.558 W/kg

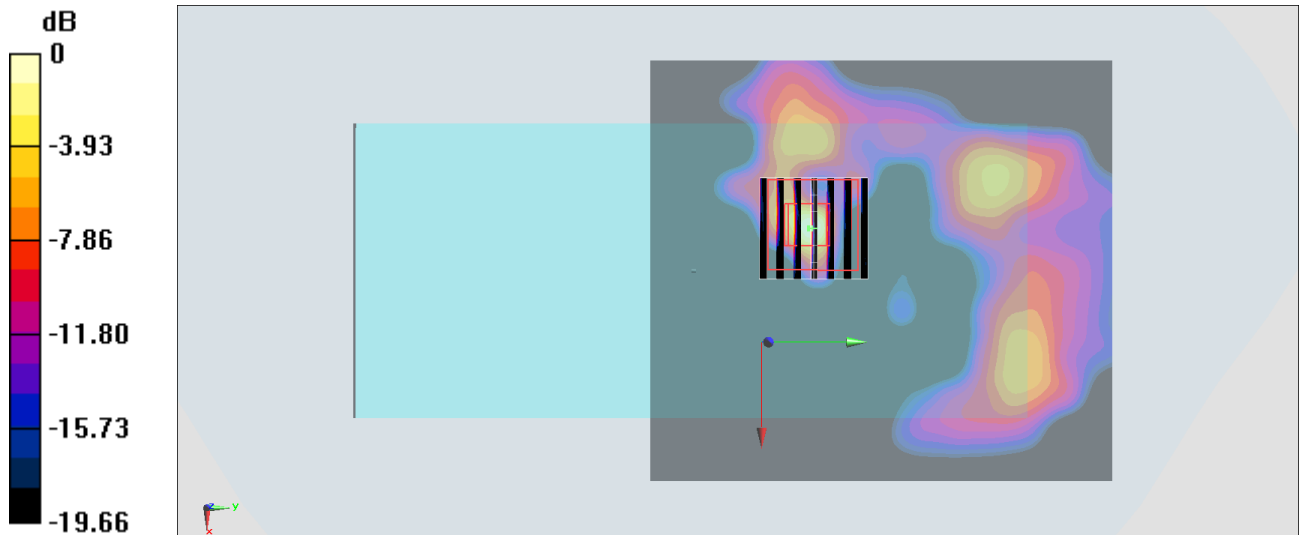
Zoom Scan (7x7x7)/Cube 0: Measurement grid: dx=4mm, dy=4mm, dz=1.4mm

Reference Value = 6.793 V/m; Power Drift = -0.10 dB

Peak SAR (extrapolated) = 1.69 W/kg

SAR(1 g) = 0.211 W/kg; SAR(10 g) = 0.036 W/kg

Maximum value of SAR (measured) = 0.674 W/kg



0 dB = 0.558 W/kg = -2.53 dBW/kg

#75_WLAN5GHz_802.11ac-VHT80 MCS0_Back_5mm_Ch122;Ant 3+6

Communication System: 802.11ac; Frequency: 5610 MHz; Duty Cycle: 1:1

Medium: HSL_5G_200224 Medium parameters used: $f = 5610$ MHz; $\sigma = 4.884$ S/m; $\epsilon_r = 36.446$; $\rho = 1000$ kg/m³

Ambient Temperature : 23.5 °C ; Liquid Temperature : 22.5 °C

DASY5 Configuration:

- Probe: EX3DV4 - SN3728; ConvF(4.57, 4.57, 4.57) @ 5610 MHz; Calibrated: 2020/2/4
- Sensor-Surface: 1.4mm (Mechanical Surface Detection)
- Electronics: DAE3 Sn495; Calibrated: 2019/5/21
- Phantom: SAM_Left; Type: QD000P40CD; Serial: TP:1815
- Measurement SW: DASY52, Version 52.10 (2); SEMCAD X Version 14.6.12 (7470)

Area Scan (101x111x1): Interpolated grid: dx=1.000 mm, dy=1.000 mm

Maximum value of SAR (interpolated) = 0.342 W/kg

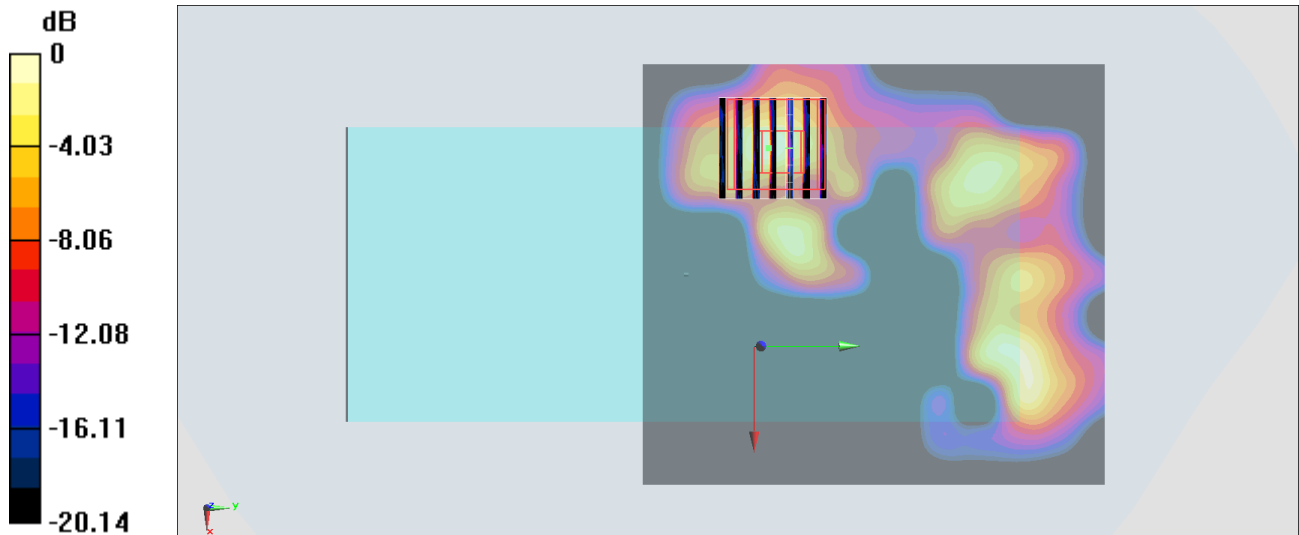
Zoom Scan (7x7x7)/Cube 0: Measurement grid: dx=4mm, dy=4mm, dz=1.4mm

Reference Value = 7.997 V/m; Power Drift = -0.15 dB

Peak SAR (extrapolated) = 0.648 W/kg

SAR(1 g) = 0.131 W/kg; SAR(10 g) = 0.030 W/kg

Maximum value of SAR (measured) = 0.363 W/kg



0 dB = 0.342 W/kg = -4.66 dBW/kg

#76_WLAN5GHz_802.11ac-VHT80 MCS0_Back_5mm_Ch155;Ant 3+6

Communication System: 802.11ac; Frequency: 5775 MHz; Duty Cycle: 1:1

Medium: HSL_5G_200224 Medium parameters used: $f = 5775$ MHz; $\sigma = 5.137$ S/m; $\epsilon_r = 36.054$; $\rho = 1000$ kg/m³

Ambient Temperature : 23.5 °C ; Liquid Temperature : 22.5 °C

DASY5 Configuration:

- Probe: EX3DV4 - SN3728; ConvF(4.78, 4.78, 4.78) @ 5775 MHz; Calibrated: 2020/2/4
- Sensor-Surface: 1.4mm (Mechanical Surface Detection)
- Electronics: DAE3 Sn495; Calibrated: 2019/5/21
- Phantom: SAM_Left; Type: QD000P40CD; Serial: TP:1815
- Measurement SW: DASY52, Version 52.10 (2); SEMCAD X Version 14.6.12 (7470)

Area Scan (101x111x1): Interpolated grid: dx=1.000 mm, dy=1.000 mm

Maximum value of SAR (interpolated) = 0.320 W/kg

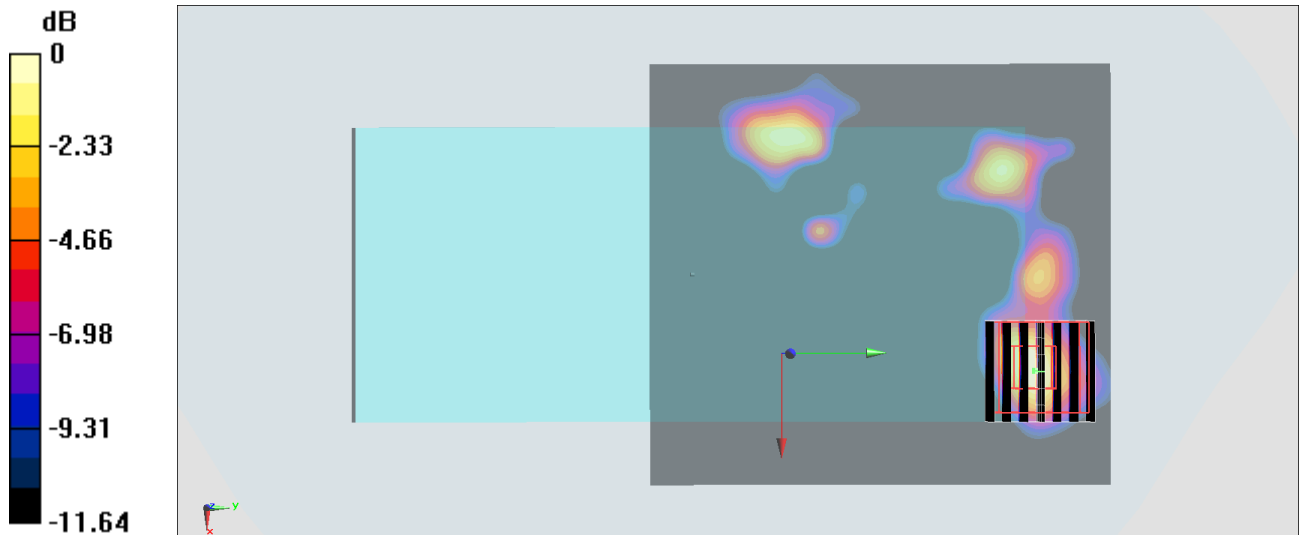
Zoom Scan (7x7x7)/Cube 0: Measurement grid: dx=4mm, dy=4mm, dz=1.4mm

Reference Value = 6.787 V/m; Power Drift = 0.15 dB

Peak SAR (extrapolated) = 0.460 W/kg

SAR(1 g) = 0.121 W/kg; SAR(10 g) = 0.056 W/kg

Maximum value of SAR (measured) = 0.280 W/kg



0 dB = 0.320 W/kg = -4.95 dBW/kg

#77_Bluetooth_1Mbps_Back_5mm_Ch39

Communication System: Bluetooth; Frequency: 2441 MHz; Duty Cycle: 1:1.301

Medium: HSL_2450_200221 Medium parameters used: $f = 2441$ MHz; $\sigma = 1.762$ S/m; $\epsilon_r = 38.992$; $\rho = 1000$ kg/m³

Ambient Temperature : 23.5 °C ; Liquid Temperature : 22.5 °C

DASY5 Configuration:

- Probe: EX3DV4 - SN3728; ConvF(7.33, 7.33, 7.33) @ 2441 MHz; Calibrated: 2020/2/4
- Sensor-Surface: 1.4mm (Mechanical Surface Detection)
- Electronics: DAE3 Sn495; Calibrated: 2019/5/21
- Phantom: SAM_Left; Type: QD000P40CD; Serial: TP:1815
- Measurement SW: DASY52, Version 52.10 (2); SEMCAD X Version 14.6.12 (7470)

Area Scan (91x61x1): Interpolated grid: dx=1.200 mm, dy=1.200 mm

Maximum value of SAR (interpolated) = 0.381 W/kg

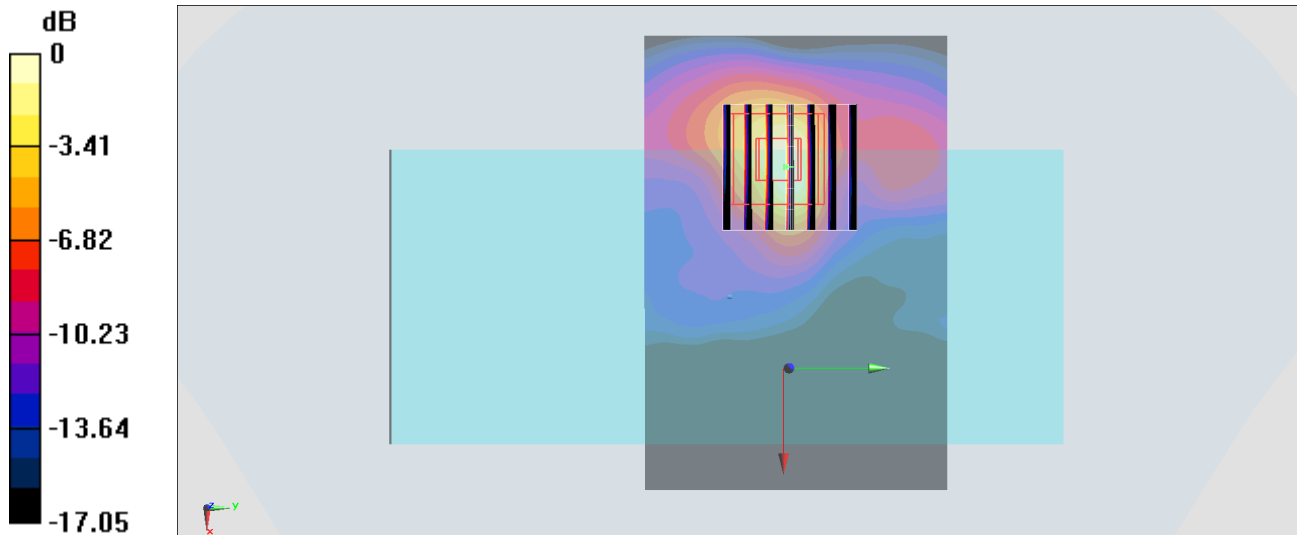
Zoom Scan (7x7x7)/Cube 0: Measurement grid: dx=5mm, dy=5mm, dz=5mm

Reference Value = 6.925 V/m; Power Drift = -0.03 dB

Peak SAR (extrapolated) = 1.18 W/kg

SAR(1 g) = 0.208 W/kg; SAR(10 g) = 0.065 W/kg

Maximum value of SAR (measured) = 0.507 W/kg



0 dB = 0.381 W/kg = -4.19 dBW/kg

#78_GSM1900_GPRS (2 Tx Slots)_Back_0mm_Ch512

Communication System: PCS; Frequency: 1850.2 MHz; Duty Cycle: 1:4.15

Medium: HSL_1900_200312 Medium parameters used: $f = 1850.2$ MHz; $\sigma = 1.36$ S/m; $\epsilon_r = 40.843$; $\rho = 1000$ kg/m³

Ambient Temperature : 23.4 °C ; Liquid Temperature : 22.4 °C

DASY5 Configuration:

- Probe: EX3DV4 - SN3728; ConvF(7.82, 7.82, 7.82) @ 1850.2 MHz; Calibrated: 2020/2/4
- Sensor-Surface: 1.4mm (Mechanical Surface Detection)
- Electronics: DAE3 Sn495; Calibrated: 2019/5/21
- Phantom: SAM_Left; Type: QD000P40CD; Serial: TP:1815
- Measurement SW: DASY52, Version 52.10 (4); SEMCAD X Version 14.6.14 (7483)

Area Scan (71x51x1): Interpolated grid: dx=1.500 mm, dy=1.500 mm

Maximum value of SAR (interpolated) = 12.7 W/kg

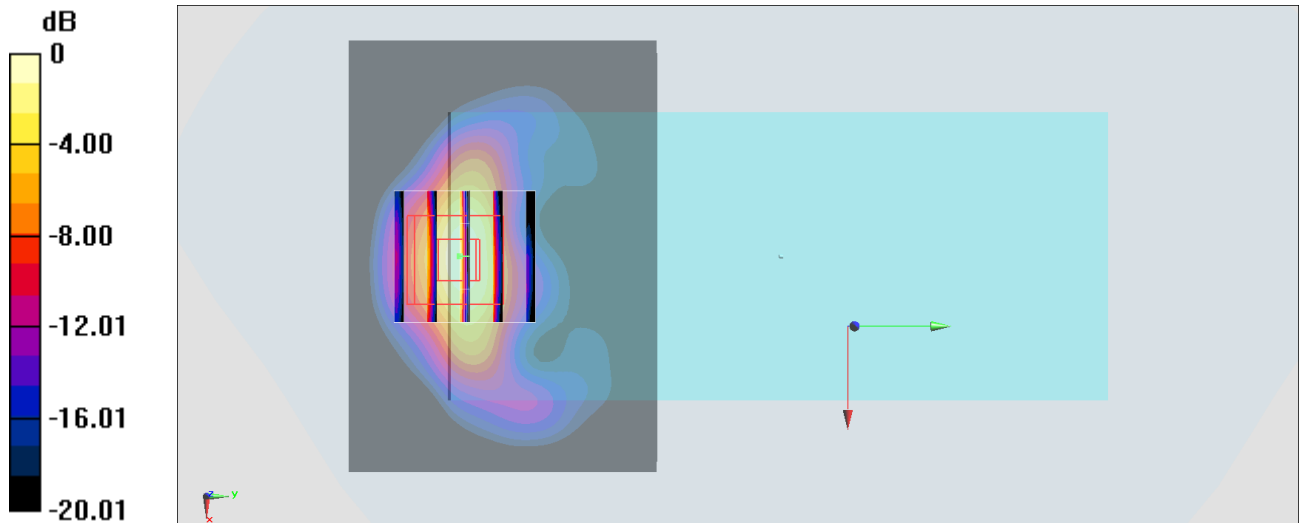
Zoom Scan (5x5x7)/Cube 0: Measurement grid: dx=8mm, dy=8mm, dz=5mm

Reference Value = 56.22 V/m; Power Drift = 0.12 dB

Peak SAR (extrapolated) = 15.4 W/kg

SAR(1 g) = 6.75 W/kg; SAR(10 g) = 2.83 W/kg

Maximum value of SAR (measured) = 13.0 W/kg



0 dB = 12.7 W/kg = 11.04 dBW/kg

#79_WCDMA II_RMC 12.2Kbps_Back_0mm_Ch9262

Communication System: WCDMA ; Frequency: 1852.4 MHz;Duty Cycle: 1:1

Medium: HSL_1900_200312 Medium parameters used : $f = 1852.4$ MHz; $\sigma = 1.36$ S/m; $\epsilon_r = 40.864$; $\rho = 1000$ kg/m³

Ambient Temperature : 23.4 °C ; Liquid Temperature : 22.4 °C

DASY5 Configuration:

- Probe: EX3DV4 - SN3728; ConvF(7.82, 7.82, 7.82) @ 1852.4 MHz; Calibrated: 2020/2/4
- Sensor-Surface: 1.4mm (Mechanical Surface Detection)
- Electronics: DAE3 Sn495; Calibrated: 2019/5/21
- Phantom: SAM_Left; Type: QD000P40CD; Serial: TP:1815
- Measurement SW: DASY52, Version 52.10 (4);SEMCAD X Version 14.6.14 (7483)

Area Scan (71x51x1): Interpolated grid: dx=1.500 mm, dy=1.500 mm

Maximum value of SAR (interpolated) = 14.3 W/kg

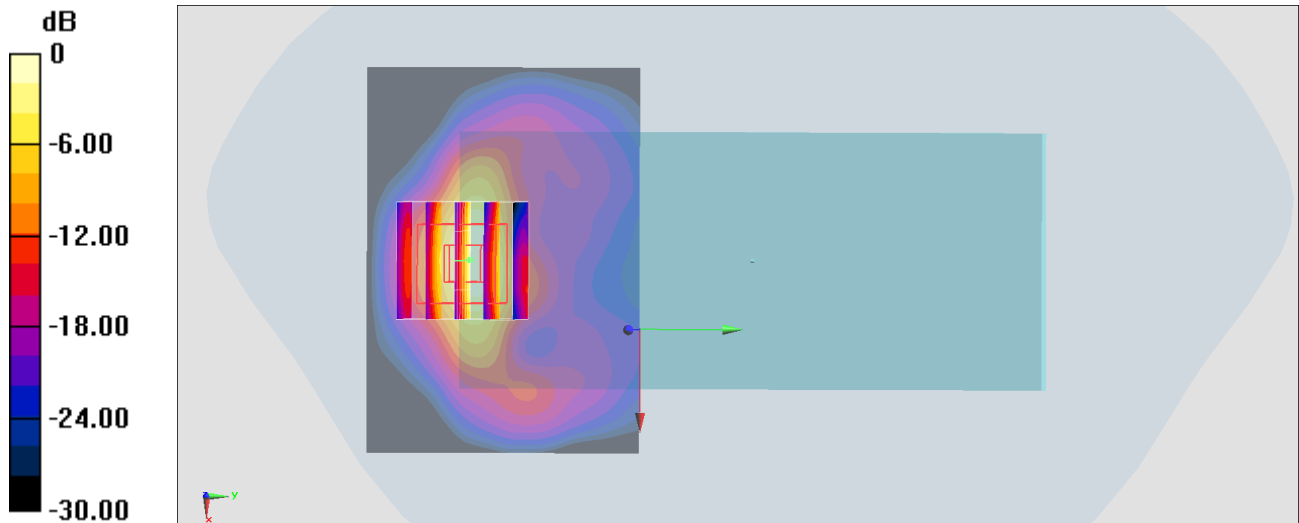
Zoom Scan (5x5x7)/Cube 0: Measurement grid: dx=8mm, dy=8mm, dz=5mm

Reference Value = 48.89 V/m; Power Drift = 0.13 dB

Peak SAR (extrapolated) = 17.3 W/kg

SAR(1 g) = 7.15 W/kg; SAR(10 g) = 2.92 W/kg

Maximum value of SAR (measured) = 14.3 W/kg



0 dB = 14.3 W/kg = 11.55 dBW/kg

#80_WCDMA_IV_RMC_12.2Kbps_Back_0mm_Ch1513

Communication System: WCDMA ; Frequency: 1752.6 MHz;Duty Cycle: 1:1

Medium: HSL_1750_200312 Medium parameters used: $f = 1753$ MHz; $\sigma = 1.361$ S/m; $\epsilon_r = 39.32$; $\rho = 1000$ kg/m³

Ambient Temperature : 23.4 °C ; Liquid Temperature : 22.4 °C

DASY5 Configuration:

- Probe: EX3DV4 - SN3728; ConvF(8.06, 8.06, 8.06) @ 1752.6 MHz; Calibrated: 2020/2/4
- Sensor-Surface: 1.4mm (Mechanical Surface Detection)
- Electronics: DAE3 Sn495; Calibrated: 2019/5/21
- Phantom: SAM_Left; Type: QD000P40CD; Serial: TP:1815
- Measurement SW: DASY52, Version 52.10 (4);SEMCAD X Version 14.6.14 (7483)

Area Scan (71x51x1): Interpolated grid: dx=1.500 mm, dy=1.500 mm

Maximum value of SAR (interpolated) = 12.9 W/kg

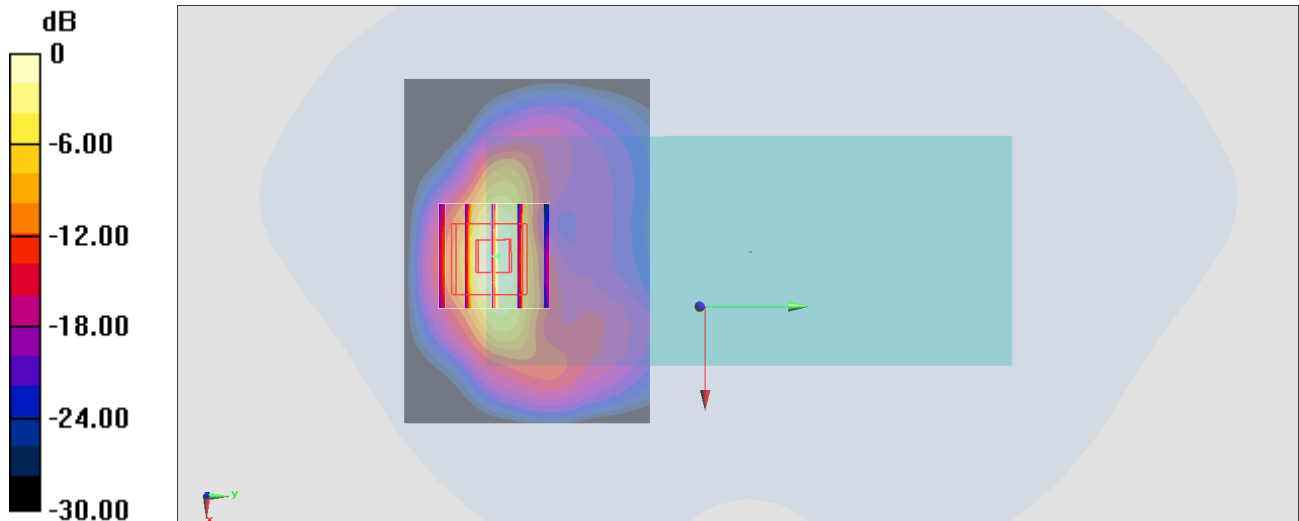
Zoom Scan (5x5x7)/Cube 0: Measurement grid: dx=8mm, dy=8mm, dz=5mm

Reference Value = 51.95 V/m; Power Drift = 0.11 dB

Peak SAR (extrapolated) = 14.7 W/kg

SAR(1 g) = 6.3 W/kg; SAR(10 g) = 2.65 W/kg

Maximum value of SAR (measured) = 12.2 W/kg



0 dB = 12.9 W/kg = 11.11 dBW/kg

#81_CDMA BC1_RTAP 153.6bps_Back_0mm_Ch25

Communication System: CDMA ; Frequency: 1851.25 MHz; Duty Cycle: 1:1

Medium: HSL_1900_200312 Medium parameters used : $f = 1851.25$ MHz; $\sigma = 1.359$ S/m; $\epsilon_r = 40.807$; $\rho = 1000$ kg/m³

Ambient Temperature : 23.4 °C ; Liquid Temperature : 22.4 °C

DASY5 Configuration:

- Probe: EX3DV4 - SN3728; ConvF(7.82, 7.82, 7.82) @ 1851.25 MHz; Calibrated: 2020/2/4
- Sensor-Surface: 1.4mm (Mechanical Surface Detection)
- Electronics: DAE3 Sn495; Calibrated: 2019/5/21
- Phantom: SAM_Left; Type: QD000P40CD; Serial: TP:1815
- Measurement SW: DASY52, Version 52.10 (4); SEMCAD X Version 14.6.14 (7483)

Area Scan (71x51x1): Interpolated grid: dx=1.500 mm, dy=1.500 mm

Maximum value of SAR (interpolated) = 13.9 W/kg

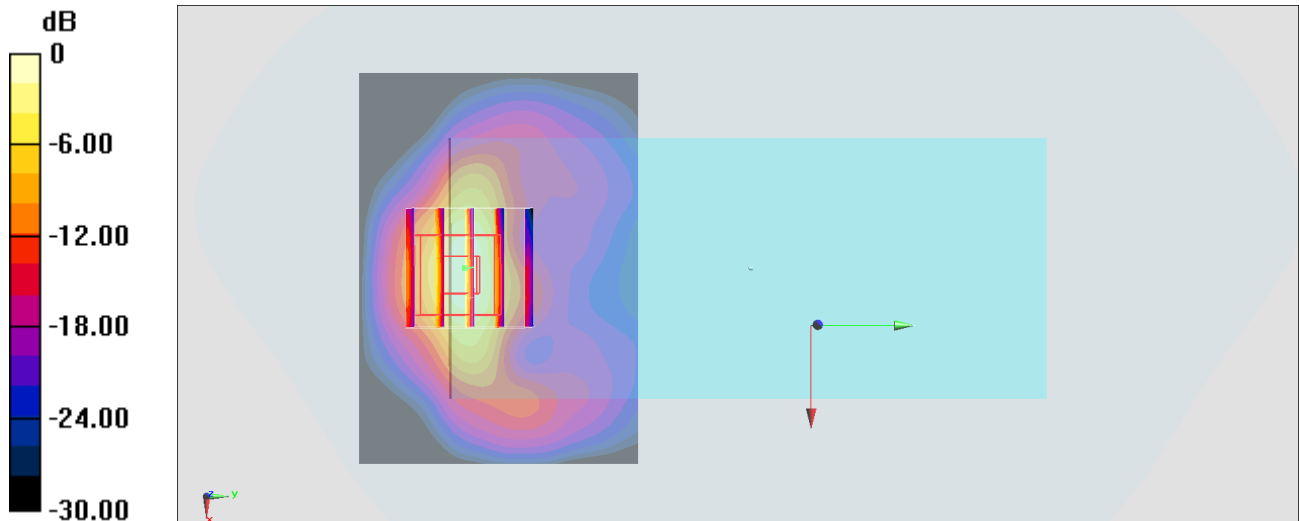
Zoom Scan (5x5x7)/Cube 0: Measurement grid: dx=8mm, dy=8mm, dz=5mm

Reference Value = 58.61 V/m; Power Drift = 0.07 dB

Peak SAR (extrapolated) = 17.8 W/kg

SAR(1 g) = 7.35 W/kg; SAR(10 g) = 2.95 W/kg

Maximum value of SAR (measured) = 14.2 W/kg



0 dB = 13.9 W/kg = 11.43 dBW/kg

#82_LTE Band 7_20M_QPSK_1_99_Bottom Side_0mm_Ch20850

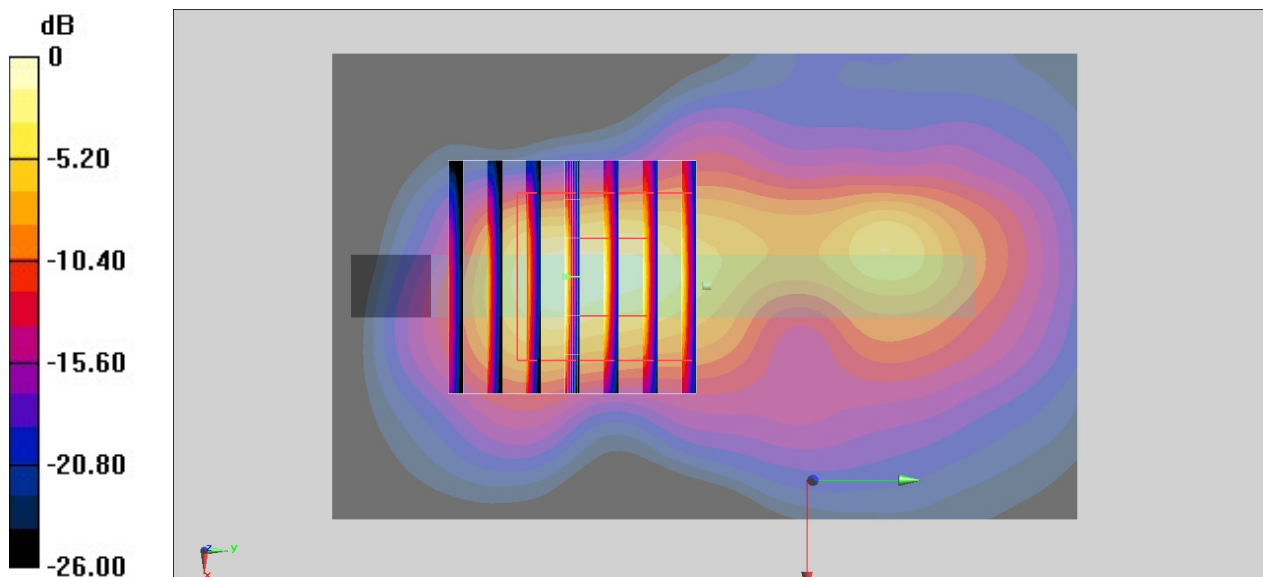
Communication System: LTE ; Frequency: 2510 MHz;Duty Cycle: 1:1
Medium: HSL_2600_200303 Medium parameters used: $f = 2510$ MHz; $\sigma = 1.884$ S/m; $\epsilon_r = 38.416$;
 $\rho = 1000$ kg/m³
Ambient Temperature : 23.5 °C ; Liquid Temperature : 22.5 °C

DASY5 Configuration

- Probe: EX3DV4 - SN3925;ConvF(7.43, 7.43, 7.43) @ 2510 MHz;Calibrated: 2019/5/24
- Sensor-Surface: 1.4mm (Mechanical Surface Detection)
- Electronics: DAE4 Sn778; Calibrated: 2019/5/21
- Phantom: Twin-SAM V5.0 (30deg probe tilt); Type: QD 000 P40 CD; Serial: 1885
- Measurement SW: DASY52, Version 52.10 (2); SEMCAD X Version 14.6.12 (7450)

Area Scan (51x81x1): Interpolated grid: dx=1.200 mm, dy=1.200 mm
Maximum value of SAR (interpolated) = 15.3 W/kg

Zoom Scan (7x7x7)/Cube 0: Measurement grid: dx=5mm, dy=5mm, dz=5mm
Reference Value = 16.42 V/m; Power Drift = -0.04 dB
Peak SAR (extrapolated) = 21.7 W/kg
SAR(1 g) = 7.3 W/kg; SAR(10 g) = 2.52 W/kg
Maximum value of SAR (measured) = 14.6 W/kg



#83_LTE Band 25_20M_QPSK_1_0_Back_0mm_Ch26140

Communication System: LTE ; Frequency: 1860 MHz;Duty Cycle: 1:1

Medium: HSL_1900_200312 Medium parameters used: $f = 1860$ MHz; $\sigma = 1.361$ S/m; $\epsilon_r = 40.912$; $\rho = 1000$ kg/m³

Ambient Temperature : 23.4 °C ; Liquid Temperature : 22.4 °C

DASY5 Configuration:

- Probe: EX3DV4 - SN3728; ConvF(7.82, 7.82, 7.82) @ 1860 MHz; Calibrated: 2020/2/4
- Sensor-Surface: 1.4mm (Mechanical Surface Detection)
- Electronics: DAE3 Sn495; Calibrated: 2019/5/21
- Phantom: SAM_Left; Type: QD000P40CD; Serial: TP:1815
- Measurement SW: DASY52, Version 52.10 (4);SEMCAD X Version 14.6.14 (7483)

Area Scan (71x51x1): Interpolated grid: dx=1.500 mm, dy=1.500 mm

Maximum value of SAR (interpolated) = 15.0 W/kg

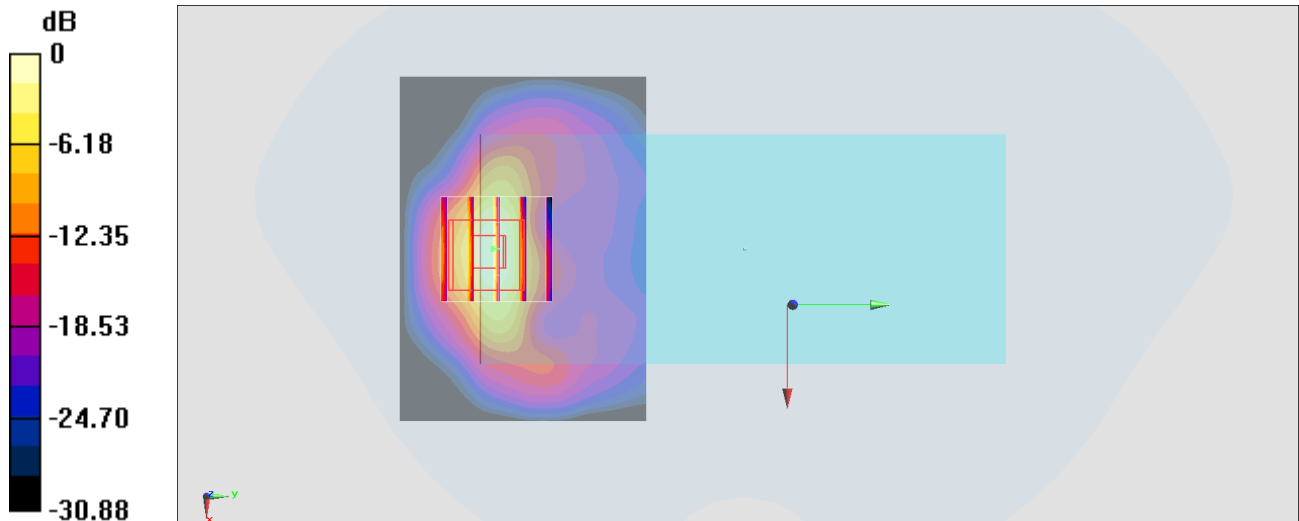
Zoom Scan (5x5x7)/Cube 0: Measurement grid: dx=8mm, dy=8mm, dz=5mm

Reference Value = 57.24 V/m; Power Drift = 0.16 dB

Peak SAR (extrapolated) = 19.3 W/kg

SAR(1 g) = 7.52 W/kg; SAR(10 g) = 2.98 W/kg

Maximum value of SAR (measured) = 14.8 W/kg



0 dB = 15.0 W/kg = 11.76 dBW/kg

#84_LTE Band 30_10M_QPSK_1_0_Back_0mm_Ch27710

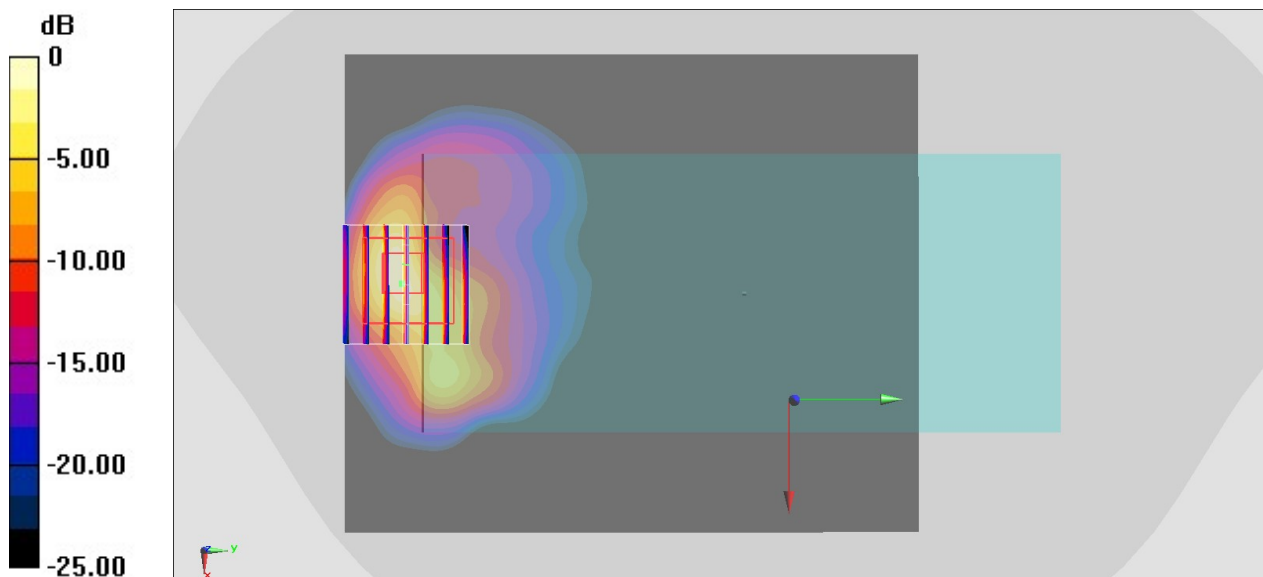
Communication System: LTE ; Frequency: 2310 MHz;Duty Cycle: 1:1
Medium: HSL_2300_200303 Medium parameters used: $f = 2310$ MHz; $\sigma = 1.681$ S/m; $\epsilon_r = 39.144$;
 $\rho = 1000$ kg/m³
Ambient Temperature : 23.5 °C ; Liquid Temperature : 22.5 °C

DASY5 Configuration

- Probe: EX3DV4 - SN3925;ConvF(7.97, 7.97, 7.97) @ 2310 MHz;Calibrated: 2019/5/24
- Sensor-Surface: 1.4mm (Mechanical Surface Detection)
- Electronics: DAE4 Sn778; Calibrated: 2019/5/21
- Phantom: Twin-SAM V5.0 (30deg probe tilt); Type: QD 000 P40 CD; Serial: 1885
- Measurement SW: DASY52, Version 52.10 (2); SEMCAD X Version 14.6.12 (7450)

Area Scan (101x121x1): Interpolated grid: dx=1.200 mm, dy=1.200 mm
Maximum value of SAR (interpolated) = 7.33 W/kg

Zoom Scan (7x7x7)/Cube 0: Measurement grid: dx=5mm, dy=5mm, dz=5mm
Reference Value = 34.95 V/m; Power Drift = -0.13 dB
Peak SAR (extrapolated) = 12.1 W/kg
SAR(1 g) = 4.33 W/kg; SAR(10 g) = 1.64 W/kg
Maximum value of SAR (measured) = 8.98 W/kg



0 dB = 8.98 W/kg = 9.53 dBW/kg

#85_LTE Band 66_20M_QPSK_1_0_Back_0mm_Ch132572

Communication System: LTE ; Frequency: 1770 MHz;Duty Cycle: 1:1

Medium: HSL_1750_200312 Medium parameters used: $f = 1770$ MHz; $\sigma = 1.396$ S/m; $\epsilon_r = 39.608$; $\rho = 1000$ kg/m³

Ambient Temperature : 23.4 °C ; Liquid Temperature : 22.4 °C

DASY5 Configuration:

- Probe: EX3DV4 - SN3728; ConvF(8.06, 8.06, 8.06) @ 1770 MHz; Calibrated: 2020/2/4
- Sensor-Surface: 1.4mm (Mechanical Surface Detection)
- Electronics: DAE3 Sn495; Calibrated: 2019/5/21
- Phantom: SAM_Left; Type: QD000P40CD; Serial: TP:1815
- Measurement SW: DASY52, Version 52.10 (4);SEMCAD X Version 14.6.14 (7483)

Area Scan (71x51x1): Interpolated grid: dx=1.500 mm, dy=1.500 mm

Maximum value of SAR (interpolated) = 13.1 W/kg

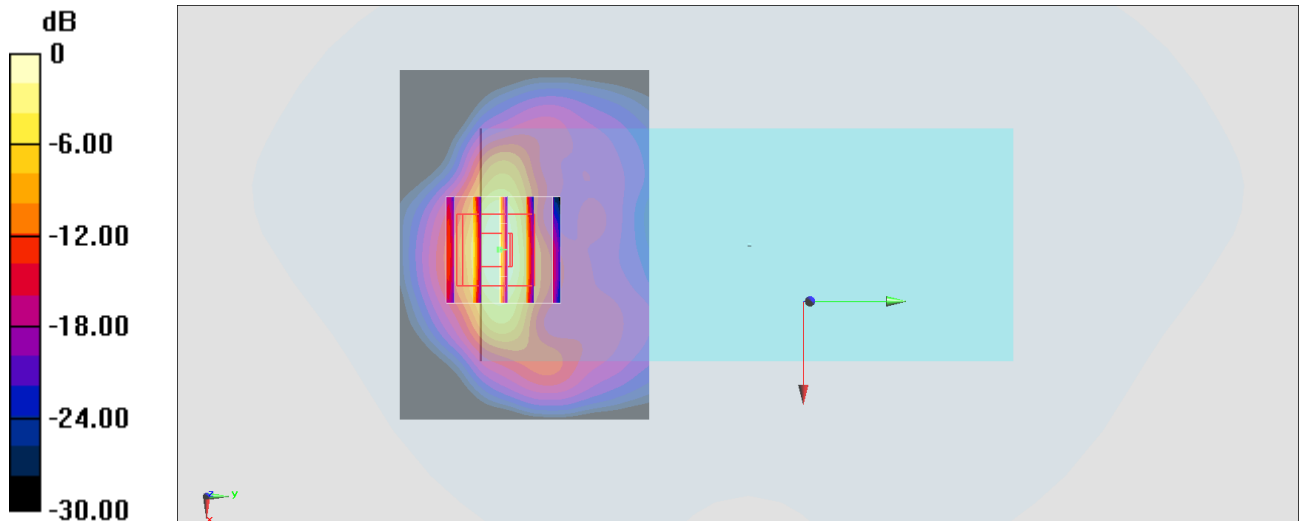
Zoom Scan (5x5x7)/Cube 0: Measurement grid: dx=8mm, dy=8mm, dz=5mm

Reference Value = 34.90 V/m; Power Drift = -0.15 dB

Peak SAR (extrapolated) = 16.6 W/kg

SAR(1 g) = 6.73 W/kg; SAR(10 g) = 2.69 W/kg

Maximum value of SAR (measured) = 13.7 W/kg



0 dB = 13.1 W/kg = 11.17 dBW/kg

#87_WLAN2.4GHz_802.11b 1Mbps_Back_0mm_Ch11;Ant 4+6

Communication System: 802.11b; Frequency: 2462 MHz; Duty Cycle: 1:1

Medium: HSL_2450_200221 Medium parameters used: $f = 2462$ MHz; $\sigma = 1.792$ S/m; $\epsilon_r = 38.961$; $\rho = 1000$ kg/m³

Ambient Temperature : 23.5 °C ; Liquid Temperature : 22.5 °C

DASY5 Configuration:

- Probe: EX3DV4 - SN3728; ConvF(7.33, 7.33, 7.33) @ 2462 MHz; Calibrated: 2020/2/4
- Sensor-Surface: 1.4mm (Mechanical Surface Detection)
- Electronics: DAE3 Sn495; Calibrated: 2019/5/21
- Phantom: SAM_Left; Type: QD000P40CD; Serial: TP:1815
- Measurement SW: DASY52, Version 52.10 (2); SEMCAD X Version 14.6.12 (7470)

Area Scan (91x71x1): Interpolated grid: dx=1.200 mm, dy=1.200 mm

Maximum value of SAR (interpolated) = 6.41 W/kg

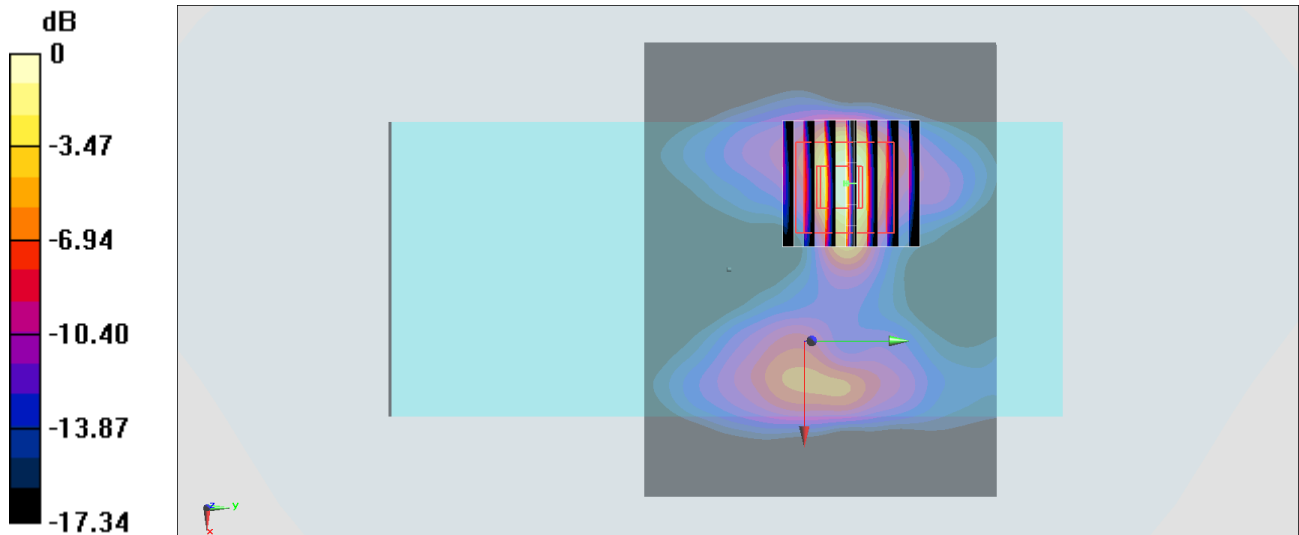
Zoom Scan (7x7x7)/Cube 0: Measurement grid: dx=5mm, dy=5mm, dz=5mm

Reference Value = 37.53 V/m; Power Drift = -0.17 dB

Peak SAR (extrapolated) = 9.79 W/kg

SAR(1 g) = 3.02 W/kg; SAR(10 g) = 0.989 W/kg

Maximum value of SAR (measured) = 5.95 W/kg



0 dB = 6.41 W/kg = 8.07 dBW/kg

#88_WLAN5GHz_802.11n-HT40 MCS0_Back_0mm_Ch46;Ant 3+6

Communication System: 802.11n; Frequency: 5230 MHz; Duty Cycle: 1:1

Medium: HSL_5G_200223 Medium parameters used: $f = 5230$ MHz; $\sigma = 4.623$ S/m; $\epsilon_r = 35.934$; $\rho = 1000$ kg/m³

Ambient Temperature : 23.6 °C ; Liquid Temperature : 22.6 °C

DASY5 Configuration:

- Probe: EX3DV4 - SN3728; ConvF(5.14, 5.14, 5.14) @ 5230 MHz; Calibrated: 2020/2/4
- Sensor-Surface: 1.4mm (Mechanical Surface Detection)
- Electronics: DAE3 Sn495; Calibrated: 2019/5/21
- Phantom: SAM_Left; Type: QD000P40CD; Serial: TP:1815
- Measurement SW: DASY52, Version 52.10 (2); SEMCAD X Version 14.6.12 (7470)

Area Scan (101x111x1): Interpolated grid: dx=1.000 mm, dy=1.000 mm

Maximum value of SAR (interpolated) = 15.0 W/kg

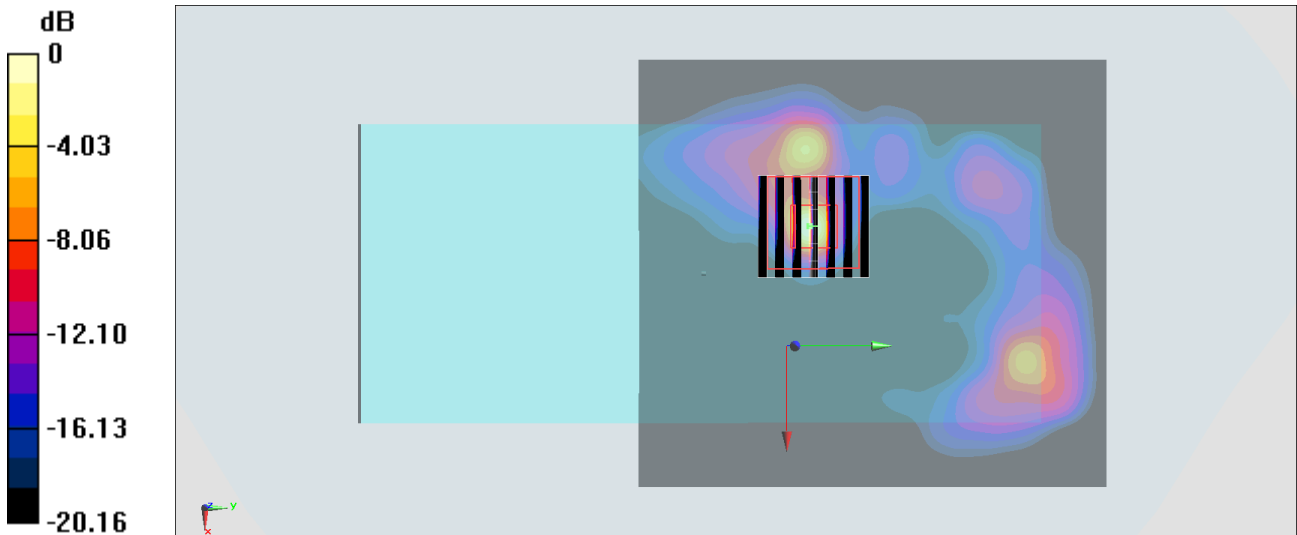
Zoom Scan (7x7x7)/Cube 0: Measurement grid: dx=4mm, dy=4mm, dz=1.4mm

Reference Value = 31.00 V/m; Power Drift = 0.04 dB

Peak SAR (extrapolated) = 34.8 W/kg

SAR(1 g) = 4.28 W/kg; SAR(10 g) = 0.748 W/kg

Maximum value of SAR (measured) = 15.6 W/kg



0 dB = 15.0 W/kg = 11.76 dBW/kg

#89_WLAN5GHz_802.11n-HT40 MCS0_Back_0mm_Ch54;Ant 3+6

Communication System: 802.11n; Frequency: 5270 MHz; Duty Cycle: 1:1

Medium: HSL_5G_200223 Medium parameters used: $f = 5270$ MHz; $\sigma = 4.662$ S/m; $\epsilon_r = 35.892$; $\rho = 1000$ kg/m³

Ambient Temperature : 23.6 °C ; Liquid Temperature : 22.6 °C

DASY5 Configuration:

- Probe: EX3DV4 - SN3728; ConvF(5.14, 5.14, 5.14) @ 5270 MHz; Calibrated: 2020/2/4
- Sensor-Surface: 1.4mm (Mechanical Surface Detection)
- Electronics: DAE3 Sn495; Calibrated: 2019/5/21
- Phantom: SAM_Left; Type: QD000P40CD; Serial: TP:1815
- Measurement SW: DASY52, Version 52.10 (2); SEMCAD X Version 14.6.12 (7470)

Area Scan (101x111x1): Interpolated grid: dx=1.000 mm, dy=1.000 mm

Maximum value of SAR (interpolated) = 16.1 W/kg

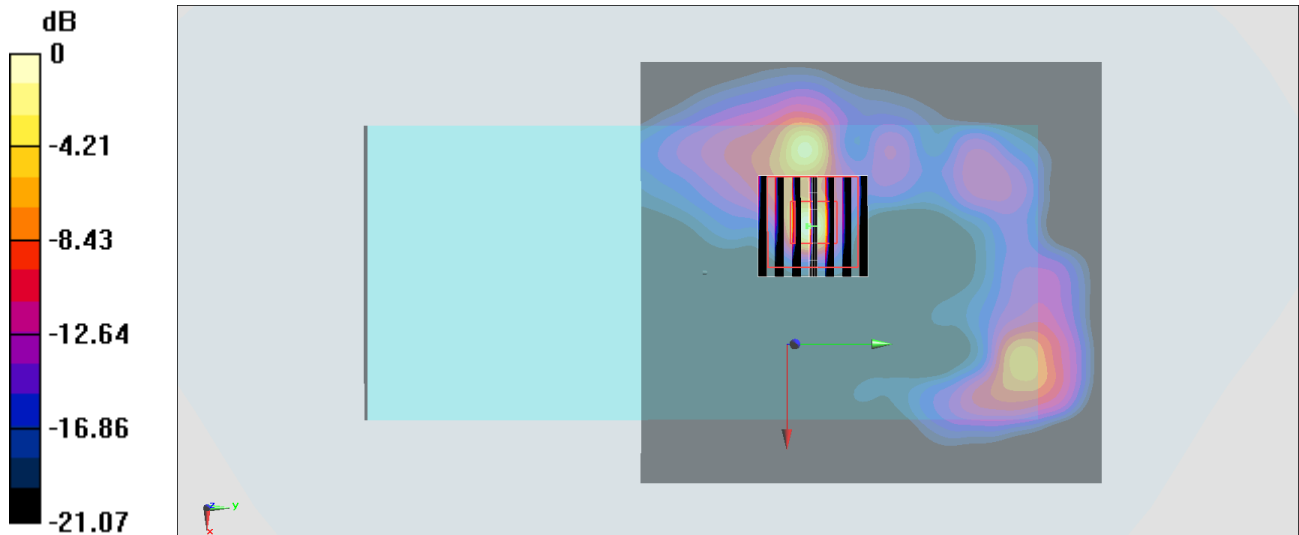
Zoom Scan (7x7x7)/Cube 0: Measurement grid: dx=4mm, dy=4mm, dz=1.4mm

Reference Value = 32.06 V/m; Power Drift = 0.06 dB

Peak SAR (extrapolated) = 42.9 W/kg

SAR(1 g) = 5.07 W/kg; SAR(10 g) = 0.862 W/kg

Maximum value of SAR (measured) = 17.4 W/kg



0 dB = 16.1 W/kg = 12.07 dBW/kg

#90_WLAN5GHz_802.11ac-VHT80 MCS0_Back_0mm_Ch122;Ant 3+6

Communication System: 802.11ac; Frequency: 5610 MHz; Duty Cycle: 1:1

Medium: HSL_5G_200223 Medium parameters used: $f = 5610$ MHz; $\sigma = 4.999$ S/m; $\epsilon_r = 35.401$; $\rho = 1000$ kg/m³

Ambient Temperature : 23.6 °C ; Liquid Temperature : 22.6 °C

DASY5 Configuration:

- Probe: EX3DV4 - SN3728; ConvF(4.57, 4.57, 4.57) @ 5610 MHz; Calibrated: 2020/2/4
- Sensor-Surface: 1.4mm (Mechanical Surface Detection)
- Electronics: DAE3 Sn495; Calibrated: 2019/5/21
- Phantom: SAM_Left; Type: QD000P40CD; Serial: TP:1815
- Measurement SW: DASY52, Version 52.10 (2); SEMCAD X Version 14.6.12 (7470)

Area Scan (101x111x1): Interpolated grid: dx=1.000 mm, dy=1.000 mm

Maximum value of SAR (interpolated) = 13.2 W/kg

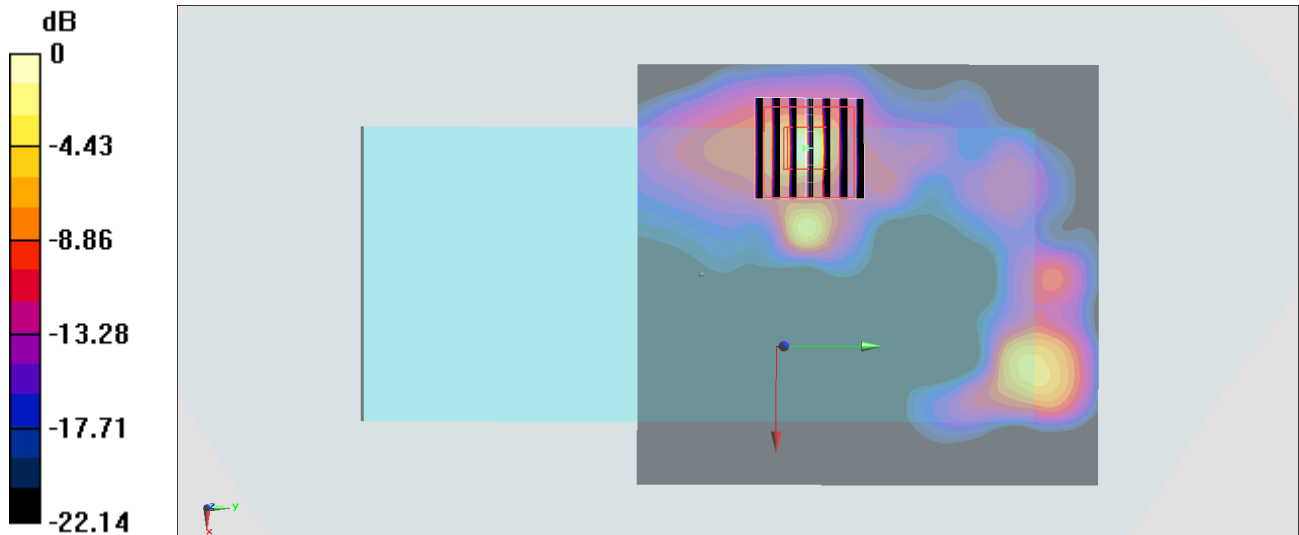
Zoom Scan (7x7x7)/Cube 0: Measurement grid: dx=4mm, dy=4mm, dz=1.4mm

Reference Value = 31.91 V/m; Power Drift = 0.04 dB

Peak SAR (extrapolated) = 26.3 W/kg

SAR(1 g) = 3.76 W/kg; SAR(10 g) = 0.866 W/kg

Maximum value of SAR (measured) = 13.4 W/kg



0 dB = 13.2 W/kg = 11.21 dBW/kg