

#27_GSM850_GPRS (3 Tx slots)_Back_5mm_Ch251

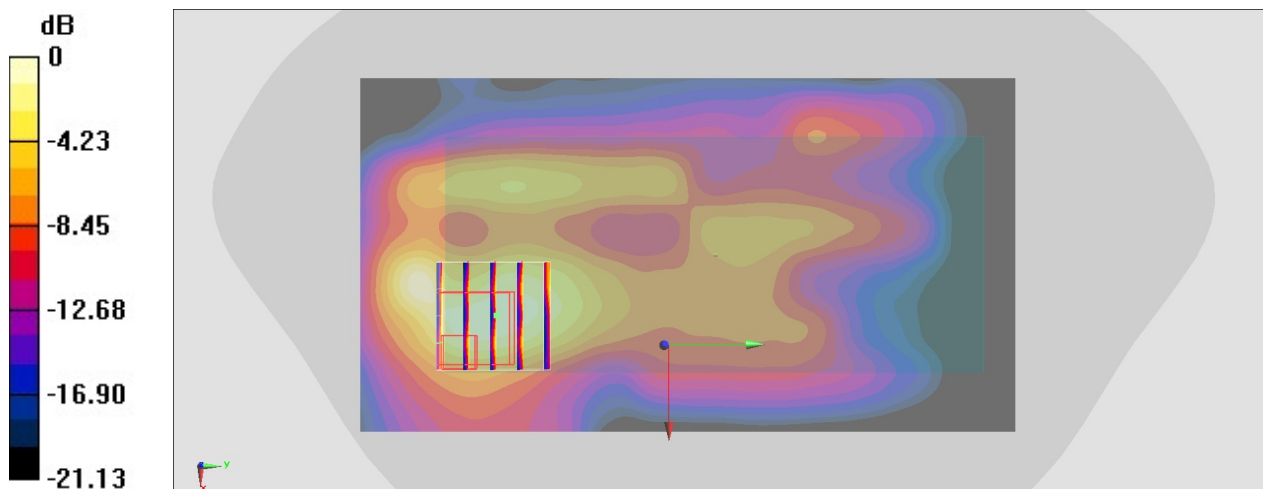
Communication System: GSM850; Frequency: 848.8 MHz; Duty Cycle: 1:2.77
Medium: HSL_850_200223 Medium parameters used: $f = 849 \text{ MHz}$; $\sigma = 0.907 \text{ S/m}$; $\epsilon_r = 42.217$; $\rho = 1000 \text{ kg/m}^3$
Ambient Temperature : $23.5 \text{ }^\circ\text{C}$; Liquid Temperature : $22.5 \text{ }^\circ\text{C}$

DASY5 Configuration

- Probe: EX3DV4 - SN3925; ConvF(10.18, 10.18, 10.18) @ 848.8 MHz; Calibrated: 2019/5/24
- Sensor-Surface: 1.4mm (Mechanical Surface Detection)
- Electronics: DAE4 Sn778; Calibrated: 2019/5/21
- Phantom: Twin-SAM V5.0 (30deg probe tilt); Type: QD 000 P40 CD; Serial: 1885
- Measurement SW: DASY52, Version 52.10 (2); SEMCAD X Version 14.6.12 (7450)

Area Scan (71x131x1): Interpolated grid: $dx=1.500 \text{ mm}$, $dy=1.500 \text{ mm}$
Maximum value of SAR (interpolated) = 1.29 W/kg

Zoom Scan (5x5x7)/Cube 0: Measurement grid: $dx=8\text{mm}$, $dy=8\text{mm}$, $dz=5\text{mm}$
Reference Value = 39.37 V/m ; Power Drift = -0.13 dB
Peak SAR (extrapolated) = 1.97 W/kg
SAR(1 g) = 0.793 W/kg; SAR(10 g) = 0.321 W/kg
Maximum value of SAR (measured) = 1.40 W/kg



0 dB = 1.40 W/kg = 1.46 dBW/kg

#28_GSM1900_GPRS (2 Tx slots)_Bottom Side_5mm_Ch810

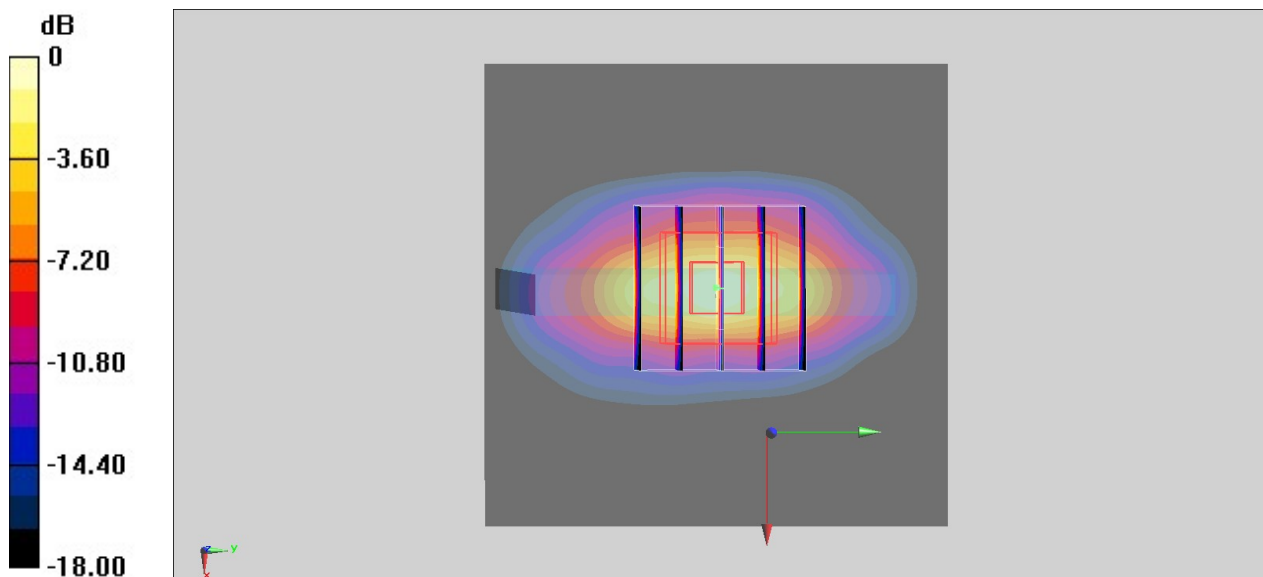
Communication System: PCS; Frequency: 1909.8 MHz; Duty Cycle: 1:4.15
Medium: HSL_1900_200313 Medium parameters used: $f = 1910$ MHz; $\sigma = 1.463$ S/m; $\epsilon_r = 41$; $\rho = 1000$ kg/m³
Ambient Temperature : 23.4 °C ; Liquid Temperature : 22.4 °C

DASY5 Configuration

- Probe: EX3DV4 - SN3925; ConvF(8.46, 8.46, 8.46) @ 1909.8 MHz; Calibrated: 2019/5/24
- Sensor-Surface: 1.4mm (Mechanical Surface Detection)
- Electronics: DAE4 Sn778; Calibrated: 2019/5/21
- Phantom: Twin-SAM V5.0 (30deg probe tilt); Type: QD 000 P40 CD; Serial: 1885
- Measurement SW: DASY52, Version 52.10 (2); SEMCAD X Version 14.6.12 (7450)

Area Scan (61x61x1): Interpolated grid: dx=1.500 mm, dy=1.500 mm
Maximum value of SAR (interpolated) = 1.55 W/kg

Zoom Scan (5x5x7)/Cube 0: Measurement grid: dx=8mm, dy=8mm, dz=5mm
Reference Value = 10.62 V/m; Power Drift = -0.15 dB
Peak SAR (extrapolated) = 1.94 W/kg
SAR(1 g) = 0.954 W/kg; SAR(10 g) = 0.433 W/kg
Maximum value of SAR (measured) = 1.60 W/kg



0 dB = 1.60 W/kg = 2.04 dBW/kg

#29_WCDMA II_RMC 12.2Kbps_Bottom Side_5mm_Ch9538

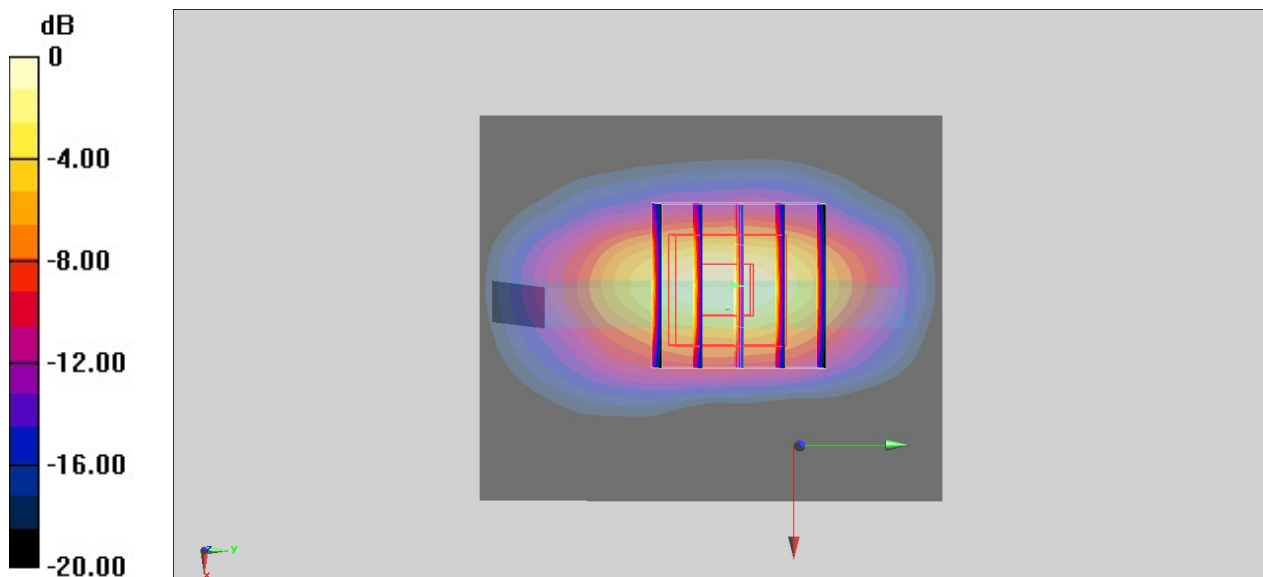
Communication System: WCDMA; Frequency: 1907.6 MHz; Duty Cycle: 1:1
Medium: HSL_1900_200313 Medium parameters used: $f = 1908 \text{ MHz}$; $\sigma = 1.462 \text{ S/m}$; $\epsilon_r = 41.011$;
 $\rho = 1000 \text{ kg/m}^3$
Ambient Temperature : $23.4 \text{ }^\circ\text{C}$; Liquid Temperature : $22.4 \text{ }^\circ\text{C}$

DASY5 Configuration

- Probe: EX3DV4 - SN3925; ConvF(8.46, 8.46, 8.46) @ 1907.6 MHz; Calibrated: 2019/5/24
- Sensor-Surface: 1.4mm (Mechanical Surface Detection)
- Electronics: DAE4 Sn778; Calibrated: 2019/5/21
- Phantom: Twin-SAM V5.0 (30deg probe tilt); Type: QD 000 P40 CD; Serial: 1885
- Measurement SW: DASY52, Version 52.10 (2); SEMCAD X Version 14.6.12 (7450)

Area Scan (51x61x1): Interpolated grid: $dx=1.500 \text{ mm}$, $dy=1.500 \text{ mm}$
Maximum value of SAR (interpolated) = 2.14 W/kg

Zoom Scan (5x5x7)/Cube 0: Measurement grid: $dx=8\text{mm}$, $dy=8\text{mm}$, $dz=5\text{mm}$
Reference Value = 15.52 V/m ; Power Drift = -0.11 dB
Peak SAR (extrapolated) = 2.63 W/kg
SAR(1 g) = 1.3 W/kg ; SAR(10 g) = 0.588 W/kg
Maximum value of SAR (measured) = 2.12 W/kg



0 dB = 2.12 W/kg = 3.26 dBW/kg

#30_WCDMA IV_RMC 12.2Kbps_Bottom Side_5mm_Ch1513

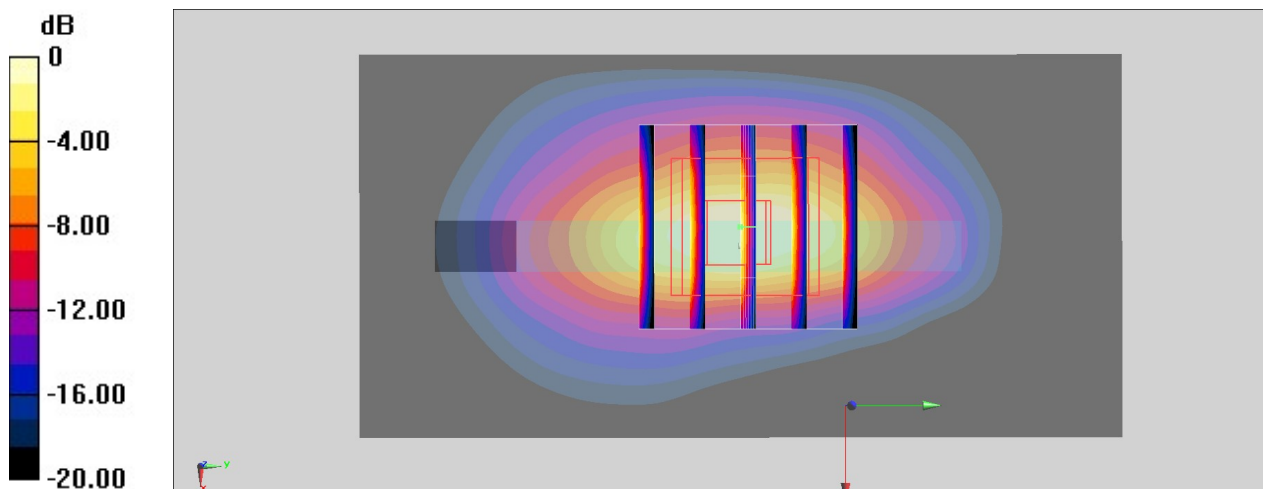
Communication System: WCDMA ; Frequency: 1752.6 MHz;Duty Cycle: 1:1
Medium: HSL_1750_200225 Medium parameters used: $f = 1753$ MHz; $\sigma = 1.355$ S/m; $\epsilon_r = 40.507$;
 $\rho = 1000$ kg/m³
Ambient Temperature : 23.5 °C ; Liquid Temperature : 22.5 °C

DASY5 Configuration

- Probe: EX3DV4 - SN3925;ConvF(8.84, 8.84, 8.84) @ 1752.6 MHz;Calibrated: 2019/5/24
- Sensor-Surface: 1.4mm (Mechanical Surface Detection)
- Electronics: DAE4 Sn778; Calibrated: 2019/5/21
- Phantom: Twin-SAM V5.0 (30deg probe tilt); Type: QD 000 P40 CD; Serial: 1885
- Measurement SW: DASY52, Version 52.10 (2); SEMCAD X Version 14.6.12 (7450)

Area Scan (41x81x1): Interpolated grid: dx=1.500 mm, dy=1.500 mm
Maximum value of SAR (interpolated) = 2.02 W/kg

Zoom Scan (5x5x7)/Cube 0: Measurement grid: dx=8mm, dy=8mm, dz=5mm
Reference Value = 29.50 V/m; Power Drift = 0.18 dB
Peak SAR (extrapolated) = 2.48 W/kg
SAR(1 g) = 1.05 W/kg; SAR(10 g) = 0.458 W/kg
Maximum value of SAR (measured) = 1.87 W/kg



0 dB = 1.87 W/kg = 2.72 dBW/kg

#31_WCDMA V_RMC 12.2Kbps_Back_5mm_Ch4132

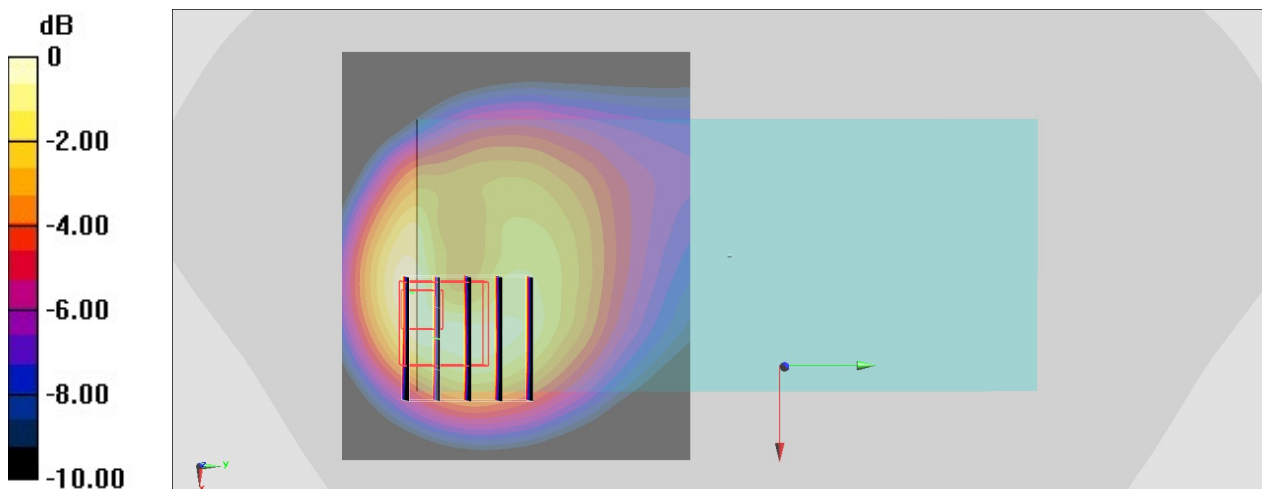
Communication System: WCDMA; Frequency: 826.4 MHz; Duty Cycle: 1:1
Medium: HSL_850_200223 Medium parameters used : $f = 826.4$ MHz; $\sigma = 0.882$ S/m; $\epsilon_r = 42.35$;
 $\rho = 1000$ kg/m³
Ambient Temperature : 23.5 °C ; Liquid Temperature : 22.5 °C

DASY5 Configuration

- Probe: EX3DV4 - SN3925; ConvF(10.18, 10.18, 10.18) @ 826.4 MHz; Calibrated: 2019/5/24
- Sensor-Surface: 1.4mm (Mechanical Surface Detection)
- Electronics: DAE4 Sn778; Calibrated: 2019/5/21
- Phantom: Twin-SAM V5.0 (30deg probe tilt); Type: QD 000 P40 CD; Serial: 1885
- Measurement SW: DASY52, Version 52.10 (2); SEMCAD X Version 14.6.12 (7450)

Area Scan (71x61x1): Interpolated grid: dx=1.500 mm, dy=1.500 mm
Maximum value of SAR (interpolated) = 0.624 W/kg

Zoom Scan (5x5x7)/Cube 0: Measurement grid: dx=8mm, dy=8mm, dz=5mm
Reference Value = 24.10 V/m; Power Drift = -0.05 dB
Peak SAR (extrapolated) = 1.02 W/kg
SAR(1 g) = 0.512 W/kg; SAR(10 g) = 0.283 W/kg
Maximum value of SAR (measured) = 0.615 W/kg



0 dB = 0.615 W/kg = -2.11 dBW/kg

#32_CDMA BC0_RTAP 153.6Kbps_Back_5mm_Ch777

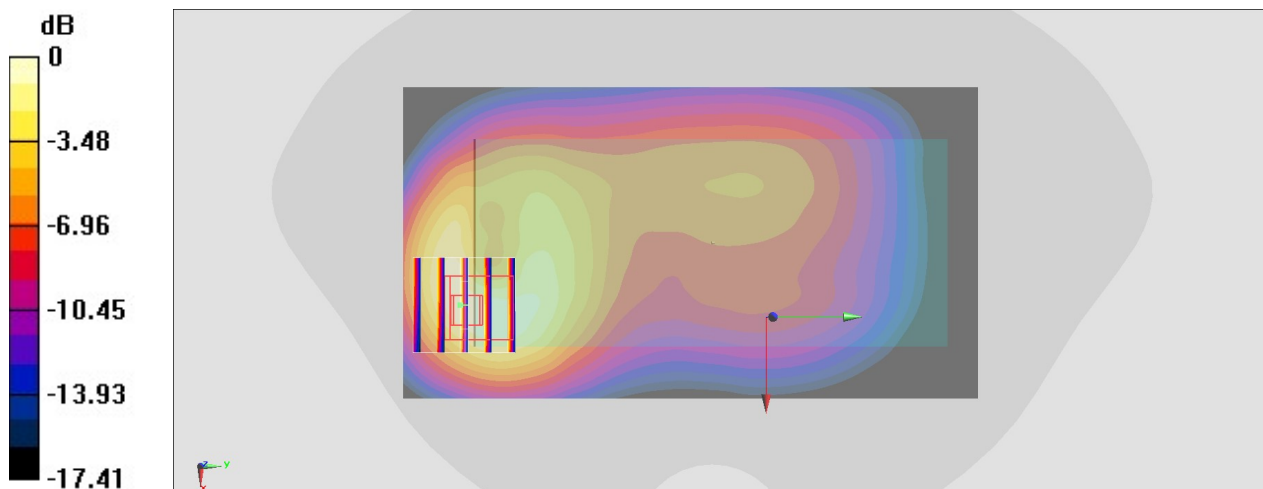
Communication System: CDMA; Frequency: 848.31 MHz; Duty Cycle: 1:1
Medium: HSL_850_200223 Medium parameters used : $f = 848.31 \text{ MHz}$; $\sigma = 0.903 \text{ S/m}$; $\epsilon_r = 42.095$; $\rho = 1000 \text{ kg/m}^3$
Ambient Temperature : $23.5 \text{ }^\circ\text{C}$; Liquid Temperature : $22.5 \text{ }^\circ\text{C}$

DASY5 Configuration

- Probe: EX3DV4 - SN3925; ConvF(10.18, 10.18, 10.18) @ 848.31 MHz; Calibrated: 2019/5/24
- Sensor-Surface: 1.4mm (Mechanical Surface Detection)
- Electronics: DAE4 Sn778; Calibrated: 2019/5/21
- Phantom: Twin-SAM V5.0 (30deg probe tilt); Type: QD 000 P40 CD; Serial: 1885
- Measurement SW: DASY52, Version 52.10 (2); SEMCAD X Version 14.6.12 (7450)

Area Scan (71x131x1): Interpolated grid: $dx=1.500 \text{ mm}$, $dy=1.500 \text{ mm}$
Maximum value of SAR (interpolated) = 1.09 W/kg

Zoom Scan (5x5x7)/Cube 0: Measurement grid: $dx=8\text{mm}$, $dy=8\text{mm}$, $dz=5\text{mm}$
Reference Value = 35.71 V/m ; Power Drift = -0.17 dB
Peak SAR (extrapolated) = 1.54 W/kg
SAR(1 g) = 0.663 W/kg; SAR(10 g) = 0.366 W/kg
Maximum value of SAR (measured) = 1.15 W/kg



0 dB = 1.15 W/kg = 0.61 dBW/kg

#33_CDMA BC1_RTAP 153.6Kbps_Bottom Side_5mm_Ch600

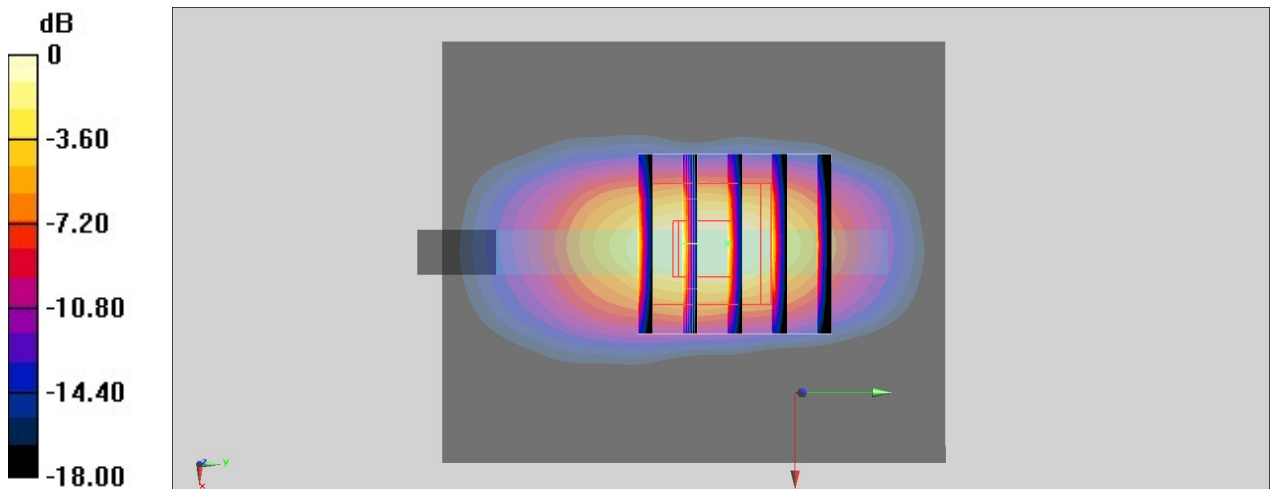
Communication System: CDMA ; Frequency: 1880 MHz; Duty Cycle: 1:1
 Medium: HSL_1900_200225 Medium parameters used: $f = 1880$ MHz; $\sigma = 1.40$ S/m; $\epsilon_r = 39.16$;
 $\rho = 1000$ kg/m³
 Ambient Temperature : 23.5 °C ; Liquid Temperature : 22.5 °C

DASY5 Configuration

- Probe: EX3DV4 - SN3925; ConvF(8.46, 8.46, 8.46) @ 1880 MHz; Calibrated: 2019/5/24
- Sensor-Surface: 1.4mm (Mechanical Surface Detection)
- Electronics: DAE4 Sn778; Calibrated: 2019/5/21
- Phantom: Twin-SAM V5.0 (30deg probe tilt); Type: QD 000 P40 CD; Serial: 1885
- Measurement SW: DASY52, Version 52.10 (2); SEMCAD X Version 14.6.12 (7450)

Area Scan (51x61x1): Interpolated grid: dx=1.500 mm, dy=1.500 mm
 Maximum value of SAR (interpolated) = 2.22 W/kg

Zoom Scan (5x5x7)/Cube 0: Measurement grid: dx=8mm, dy=8mm, dz=5mm
 Reference Value = 29.32 V/m; Power Drift = 0.09 dB
 Peak SAR (extrapolated) = 2.58 W/kg
SAR(1 g) = 1.03 W/kg; SAR(10 g) = 0.427 W/kg
 Maximum value of SAR (measured) = 1.83 W/kg



0 dB = 1.83 W/kg = 2.62 dBW/kg

#34_LTE Band 7_20M_QPSK_1_0_Bottom Side_5mm_Ch21350

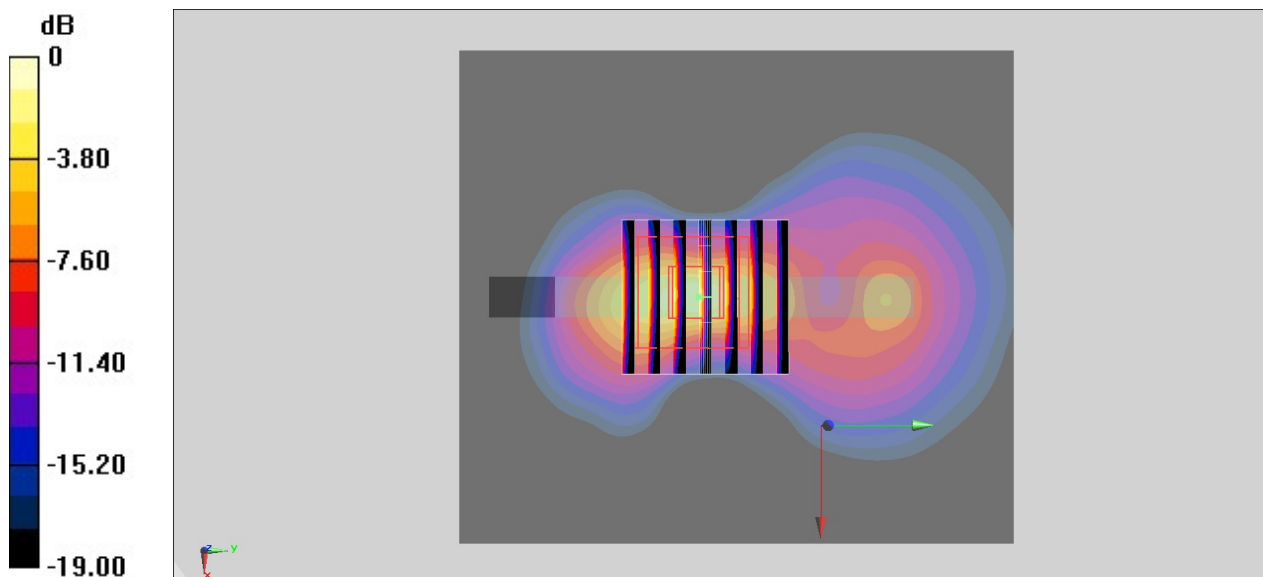
Communication System: LTE ; Frequency: 2560 MHz;Duty Cycle: 1:1
Medium: HSL_2600_200314 Medium parameters used: $f = 2560$ MHz; $\sigma = 1.977$ S/m; $\epsilon_r = 38.072$;
 $\rho = 1000$ kg/m³
Ambient Temperature : 23.6 °C ; Liquid Temperature : 22.6 °C

DASY5 Configuration

- Probe: EX3DV4 - SN3728;ConvF(7.08, 7.08, 7.08) @ 2560 MHz;Calibrated: 2020/2/4
- Sensor-Surface: 1.4mm (Mechanical Surface Detection)
- Electronics: DAE3 Sn495; Calibrated: 2019/5/21
- Phantom: Twin-SAM V5.0 (30deg probe tilt); Type: QD 000 P40 CD; Serial: 1885
- Measurement SW: DASY52, Version 52.10 (2); SEMCAD X Version 14.6.12 (7450)

Area Scan (81x91x1): Interpolated grid: dx=1.200 mm, dy=1.200 mm
Maximum value of SAR (interpolated) = 1.28 W/kg

Zoom Scan (7x7x7)/Cube 0: Measurement grid: dx=5mm, dy=5mm, dz=5mm
Reference Value = 10.03 V/m; Power Drift = 0.12 dB
Peak SAR (extrapolated) = 2.38 W/kg
SAR(1 g) = 0.981 W/kg; SAR(10 g) = 0.360 W/kg
Maximum value of SAR (measured) = 1.85 W/kg



0 dB = 1.85 W/kg = 2.67 dBW/kg

#35_LTE Band 12_10M_QPSK_1_0_Back_5mm_Ch23095

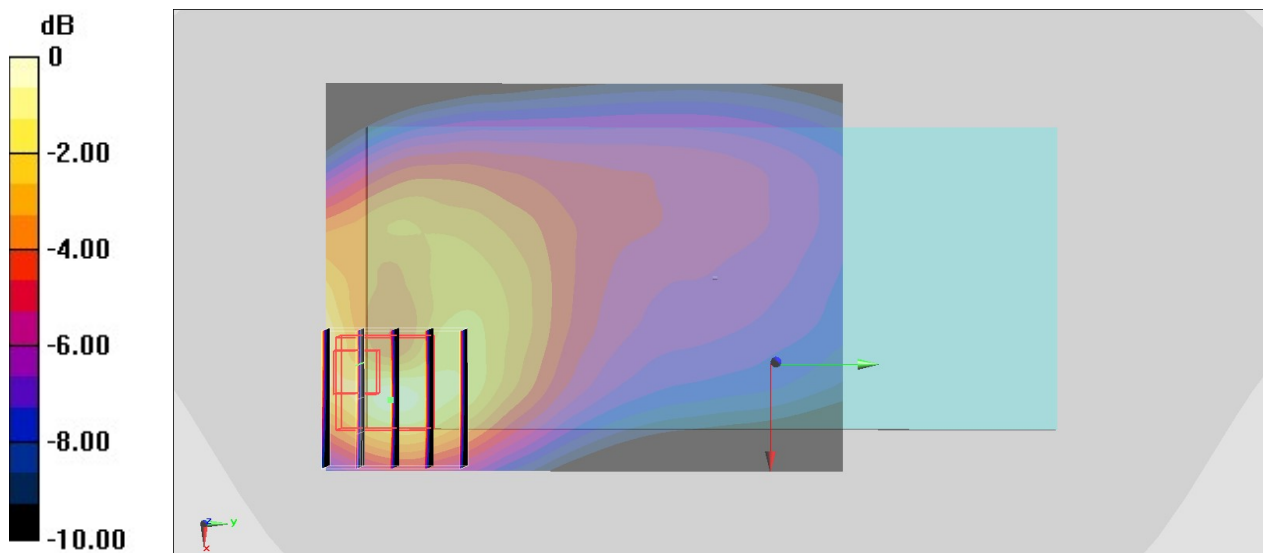
Communication System: LTE; Frequency: 707.5 MHz; Duty Cycle: 1:1
Medium: HSL_750_200220 Medium parameters used : $f = 707.5$ MHz; $\sigma = 0.849$ S/m; $\epsilon_r = 43.504$;
 $\rho = 1000$ kg/m³
Ambient Temperature : 23.4 °C ; Liquid Temperature : 22.4 °C

DASY5 Configuration

- Probe: EX3DV4 - SN3925; ConvF(10.39, 10.39, 10.39) @ 707.5 MHz; Calibrated: 2019/5/24
- Sensor-Surface: 1.4mm (Mechanical Surface Detection)
- Electronics: DAE4 Sn778; Calibrated: 2019/5/21
- Phantom: Twin-SAM V5.0 (30deg probe tilt); Type: QD 000 P40 CD; Serial: 1885
- Measurement SW: DASY52, Version 52.10 (2); SEMCAD X Version 14.6.12 (7450)

Area Scan (61x81x1): Interpolated grid: dx=1.500 mm, dy=1.500 mm
Maximum value of SAR (interpolated) = 0.665 W/kg

Zoom Scan (5x5x7)/Cube 0: Measurement grid: dx=8mm, dy=8mm, dz=5mm
Reference Value = 28.16 V/m; Power Drift = -0.10 dB
Peak SAR (extrapolated) = 0.863 W/kg
SAR(1 g) = 0.408 W/kg; SAR(10 g) = 0.238 W/kg
Maximum value of SAR (measured) = 0.702 W/kg



0 dB = 0.702 W/kg = -1.54 dBW/kg

#36_LTE Band 13_10M_QPSK_1_0_Back_5mm_Ch23230

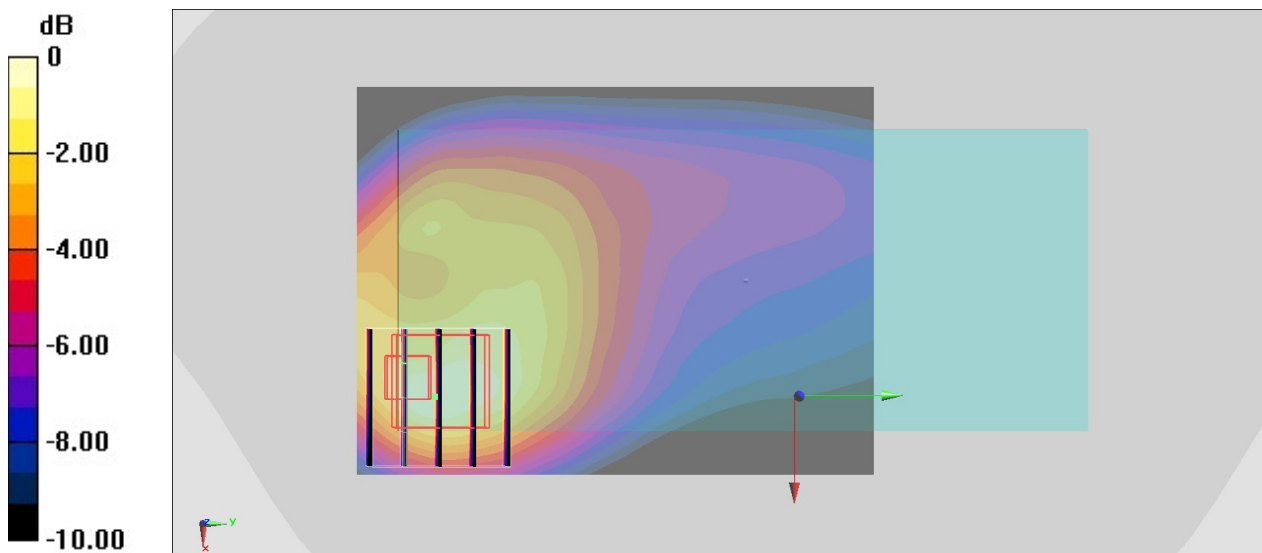
Communication System: LTE; Frequency: 782 MHz; Duty Cycle: 1:1
Medium: HSL_750_200221 Medium parameters used: $f = 782 \text{ MHz}$; $\sigma = 0.905 \text{ S/m}$; $\epsilon_r = 43.059$; $\rho = 1000 \text{ kg/m}^3$
Ambient Temperature : $23.4 \text{ }^\circ\text{C}$; Liquid Temperature : $22.4 \text{ }^\circ\text{C}$

DASY5 Configuration

- Probe: EX3DV4 - SN3925; ConvF(10.39, 10.39, 10.39) @ 782 MHz; Calibrated: 2019/5/24
- Sensor-Surface: 1.4mm (Mechanical Surface Detection)
- Electronics: DAE4 Sn778; Calibrated: 2019/5/21
- Phantom: Twin-SAM V5.0 (30deg probe tilt); Type: QD 000 P40 CD; Serial: 1885
- Measurement SW: DASY52, Version 52.10 (2); SEMCAD X Version 14.6.12 (7450)

Area Scan (61x81x1): Interpolated grid: $dx=1.500 \text{ mm}$, $dy=1.500 \text{ mm}$
Maximum value of SAR (interpolated) = 1.15 W/kg

Zoom Scan (5x5x7)/Cube 0: Measurement grid: $dx=8\text{mm}$, $dy=8\text{mm}$, $dz=5\text{mm}$
Reference Value = 33.30 V/m ; Power Drift = -0.13 dB
Peak SAR (extrapolated) = 1.30 W/kg
SAR(1 g) = 0.704 W/kg; SAR(10 g) = 0.416 W/kg
Maximum value of SAR (measured) = 1.08 W/kg



0 dB = 1.08 W/kg = 0.33 dBW/kg

#37_LTE Band 25_20M_QPSK_1_0_Bottom Side_5mm_Ch26590

Communication System: LTE; Frequency: 1905 MHz; Duty Cycle: 1:1

Medium: HSL_1900_200313 Medium parameters used : $f = 1905$ MHz; $\sigma = 1.459$ S/m; $\epsilon_r = 41.025$;

$\rho = 1000$ kg/m³

Ambient Temperature : 23.4 °C ; Liquid Temperature : 22.4 °C

DASY5 Configuration

- Probe: EX3DV4 - SN3925; ConvF(8.46, 8.46, 8.46) @ 1905 MHz; Calibrated: 2019/5/24
- Sensor-Surface: 1.4mm (Mechanical Surface Detection)
- Electronics: DAE4 Sn778; Calibrated: 2019/5/21
- Phantom: Twin-SAM V5.0 (30deg probe tilt); Type: QD 000 P40 CD; Serial: 1885
- Measurement SW: DASY52, Version 52.10 (2); SEMCAD X Version 14.6.12 (7450)

Area Scan (61x71x1): Interpolated grid: dx=1.500 mm, dy=1.500 mm

Maximum value of SAR (interpolated) = 2.08 W/kg

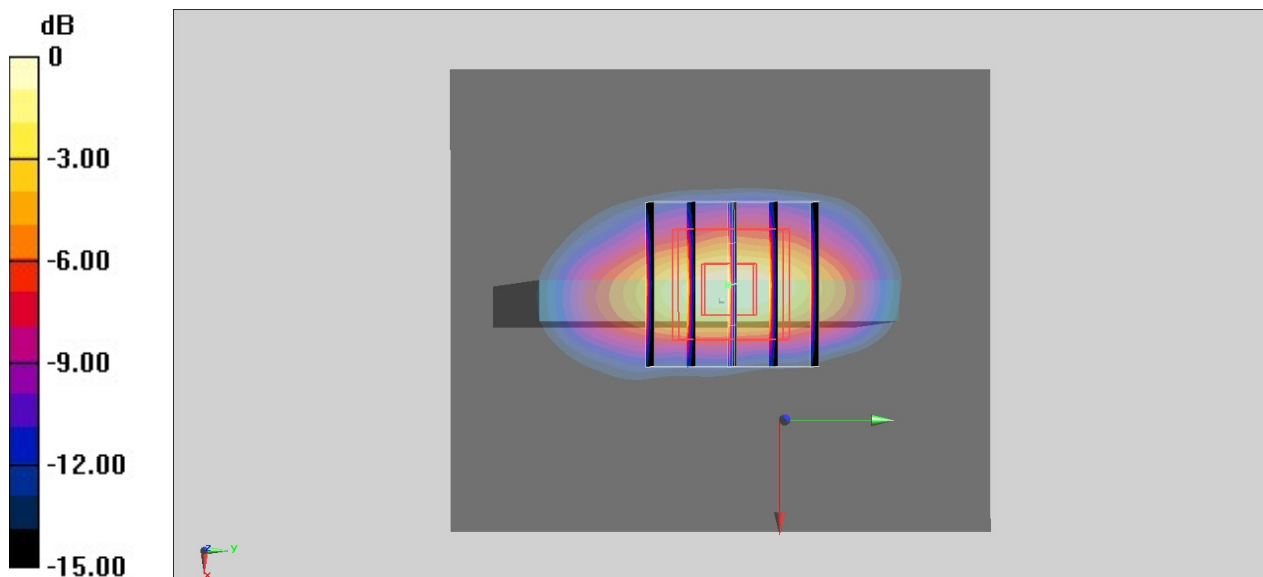
Zoom Scan (5x5x7)/Cube 0: Measurement grid: dx=8mm, dy=8mm, dz=5mm

Reference Value = 14.21 V/m; Power Drift = -0.19 dB

Peak SAR (extrapolated) = 2.52 W/kg

SAR(1 g) = 1.25 W/kg; SAR(10 g) = 0.562 W/kg

Maximum value of SAR (measured) = 2.06 W/kg



0 dB = 2.06 W/kg = 3.14 dBW/kg

#38_LTE Band 26_15M_QPSK_1_74_Back_5mm_Ch26865

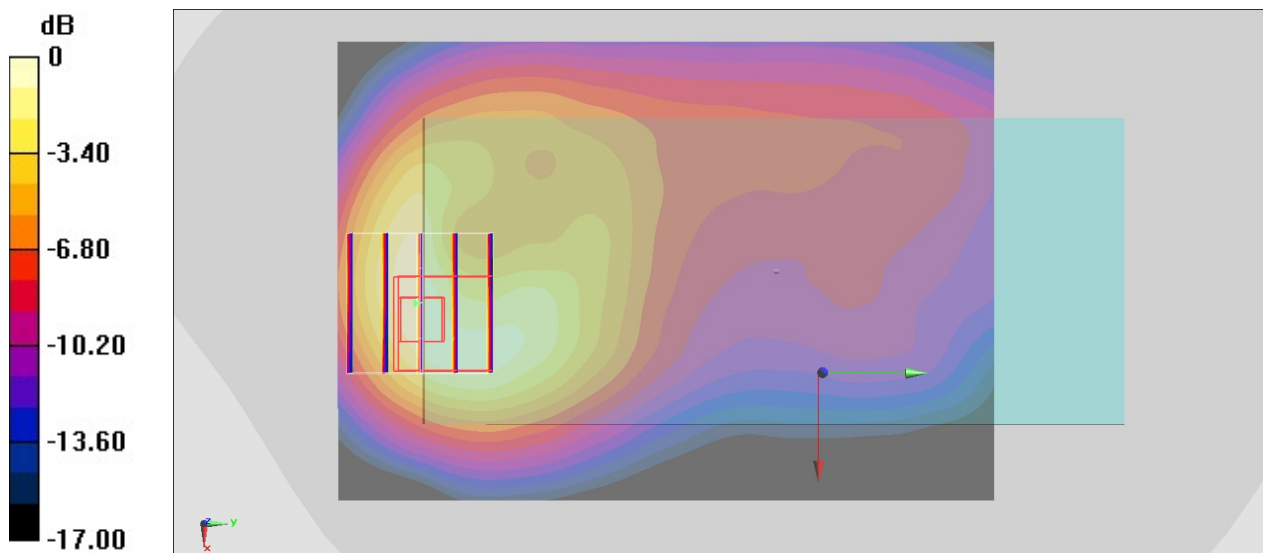
Communication System: LTE; Frequency: 831.5 MHz; Duty Cycle: 1:1
Medium: HSL_850_200219 Medium parameters used : $f = 831.5$ MHz; $\sigma = 0.866$ S/m; $\epsilon_r = 42.534$;
 $\rho = 1000$ kg/m³
Ambient Temperature : 23.4 °C ; Liquid Temperature : 22.4 °C

DASY5 Configuration

- Probe: EX3DV4 - SN3925; ConvF(10.18, 10.18, 10.18) @ 831.5 MHz; Calibrated: 2019/5/24
- Sensor-Surface: 1.4mm (Mechanical Surface Detection)
- Electronics: DAE4 Sn778; Calibrated: 2019/5/21
- Phantom: Twin-SAM V5.0 (30deg probe tilt); Type: QD 000 P40 CD; Serial: 1885
- Measurement SW: DASY52, Version 52.10 (2); SEMCAD X Version 14.6.12 (7450)

Area Scan (71x101x1): Interpolated grid: dx=1.500 mm, dy=1.500 mm
Maximum value of SAR (interpolated) = 1.10 W/kg

Zoom Scan (5x5x7)/Cube 0: Measurement grid: dx=8mm, dy=8mm, dz=5mm
Reference Value = 35.71 V/m; Power Drift = -0.16 dB
Peak SAR (extrapolated) = 1.47 W/kg
SAR(1 g) = 0.688 W/kg; SAR(10 g) = 0.382 W/kg
Maximum value of SAR (measured) = 1.14 W/kg



0 dB = 1.14 W/kg = 0.57 dBW/kg

#39_LTE Band 30_10M_QPSK_25_0_Bottom Side_5mm_Ch27710

Communication System: LTE ; Frequency: 2310 MHz;Duty Cycle: 1:1

Medium: HSL_2300_200313 Medium parameters used: $f = 2310$ MHz; $\sigma = 1.672$ S/m; $\epsilon_r = 40.11$; $\rho = 1000$ kg/m³

Ambient Temperature : 23.5 °C ; Liquid Temperature : 22.5 °C

DASY5 Configuration:

- Probe: EX3DV4 - SN3925; ConvF(7.87, 7.87, 7.87) @ 2310 MHz; Calibrated: 2019/9/20
- Sensor-Surface: 1.4mm (Mechanical Surface Detection)
- Electronics: DAE4 Sn778; Calibrated: 2019/5/21
- Phantom: SAM_Right; Type: SAM; Serial: TP:1446
- Measurement SW: DASY52, Version 52.10 (2);SEMCAD X Version 14.6.12 (7450)

Area Scan (51x81x1): Interpolated grid: dx=1.200 mm, dy=1.200 mm

Maximum value of SAR (interpolated) = 1.52 W/kg

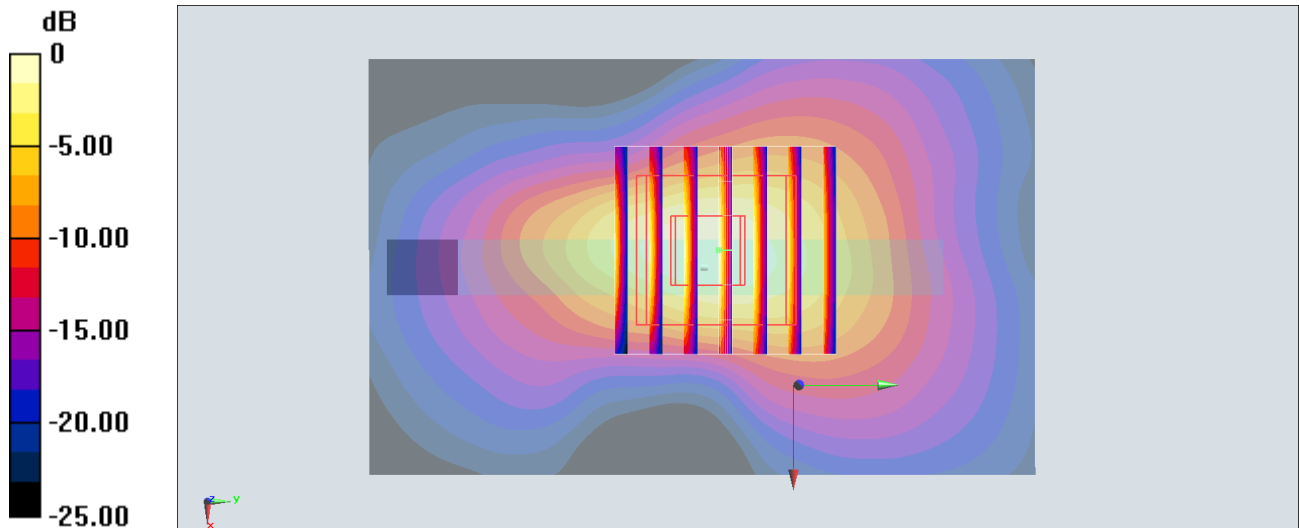
Zoom Scan (7x7x7)/Cube 0: Measurement grid: dx=5mm, dy=5mm, dz=5mm

Reference Value = 12.62 V/m; Power Drift = -0.13 dB

Peak SAR (extrapolated) = 1.87 W/kg

SAR(1 g) = 0.848 W/kg; SAR(10 g) = 0.358 W/kg

Maximum value of SAR (measured) = 1.47 W/kg



0 dB = 1.47 W/kg = 1.67 dBW/kg

#40_LTE Band 66_20M_QPSK_1_0_Bottom Side_5mm_Ch132572

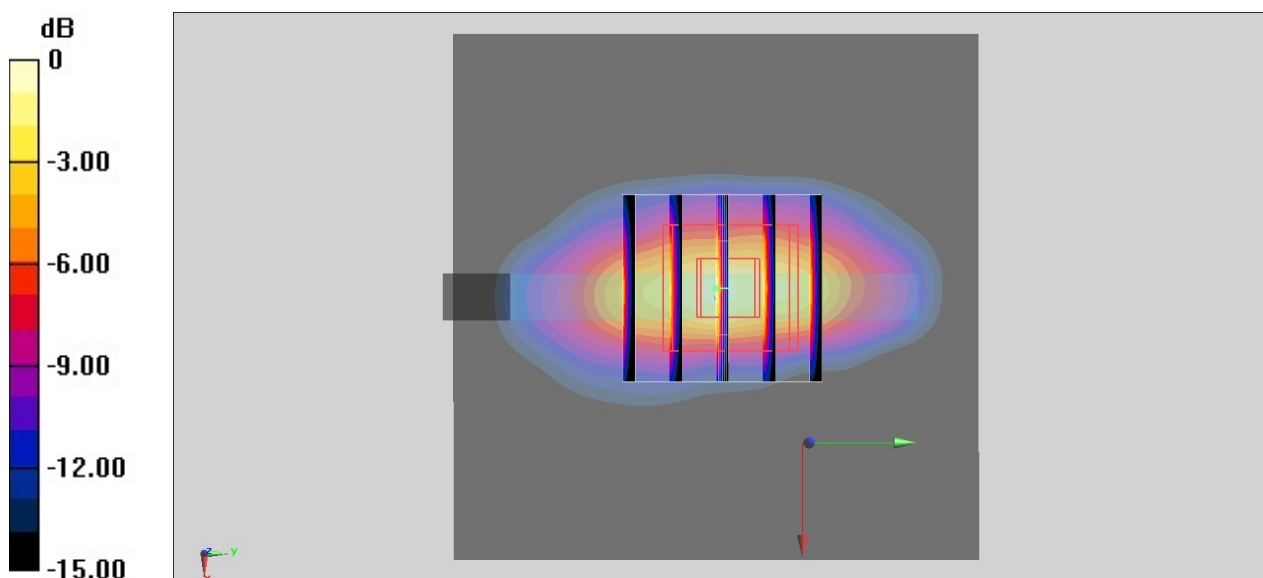
Communication System: LTE; Frequency: 1770 MHz; Duty Cycle: 1:1
Medium: HSL_1750_200313 Medium parameters used: $f = 1770$ MHz; $\sigma = 1.393$ S/m; $\epsilon_r = 40.047$;
 $\rho = 1000$ kg/m³
Ambient Temperature : 23.4 °C ; Liquid Temperature : 22.4 °C

DASY5 Configuration

- Probe: EX3DV4 - SN3925; ConvF(8.84, 8.84, 8.84) @ 1770 MHz; Calibrated: 2019/5/24
- Sensor-Surface: 1.4mm (Mechanical Surface Detection)
- Electronics: DAE4 Sn778; Calibrated: 2019/5/21
- Phantom: Twin-SAM V5.0 (30deg probe tilt); Type: QD 000 P40 CD; Serial: 1885
- Measurement SW: DASY52, Version 52.10 (2); SEMCAD X Version 14.6.12 (7450)

Area Scan (61x61x1): Interpolated grid: dx=1.500 mm, dy=1.500 mm
Maximum value of SAR (interpolated) = 1.49 W/kg

Zoom Scan (5x5x7)/Cube 0: Measurement grid: dx=8mm, dy=8mm, dz=5mm
Reference Value = 11.87 V/m; Power Drift = -0.01 dB
Peak SAR (extrapolated) = 2.12 W/kg
SAR(1 g) = 1.09 W/kg; SAR(10 g) = 0.510 W/kg
Maximum value of SAR (measured) = 1.74 W/kg



0 dB = 1.74 W/kg = 2.41 dBW/kg

#41_LTE Band 71_20M_QPSK_1_0_Back_5mm_Ch133322

Communication System: LTE; Frequency: 683 MHz; Duty Cycle: 1:1

Medium: HSL_750_200221 Medium parameters used: $f = 683$ MHz; $\sigma = 0.874$ S/m; $\epsilon_r = 43.752$; $\rho = 1000$ kg/m³

Ambient Temperature : 23.4 °C ; Liquid Temperature : 22.4 °C

DASY5 Configuration

- Probe: EX3DV4 - SN3925; ConvF(10.39, 10.39, 10.39) @ 683 MHz; Calibrated: 2019/5/24
- Sensor-Surface: 1.4mm (Mechanical Surface Detection)
- Electronics: DAE4 Sn778; Calibrated: 2019/5/21
- Phantom: Twin-SAM V5.0 (30deg probe tilt); Type: QD 000 P40 CD; Serial: 1885
- Measurement SW: DASY52, Version 52.10 (2); SEMCAD X Version 14.6.12 (7450)

Area Scan (71x101x1): Interpolated grid: dx=1.500 mm, dy=1.500 mm

Maximum value of SAR (interpolated) = 0.747 W/kg

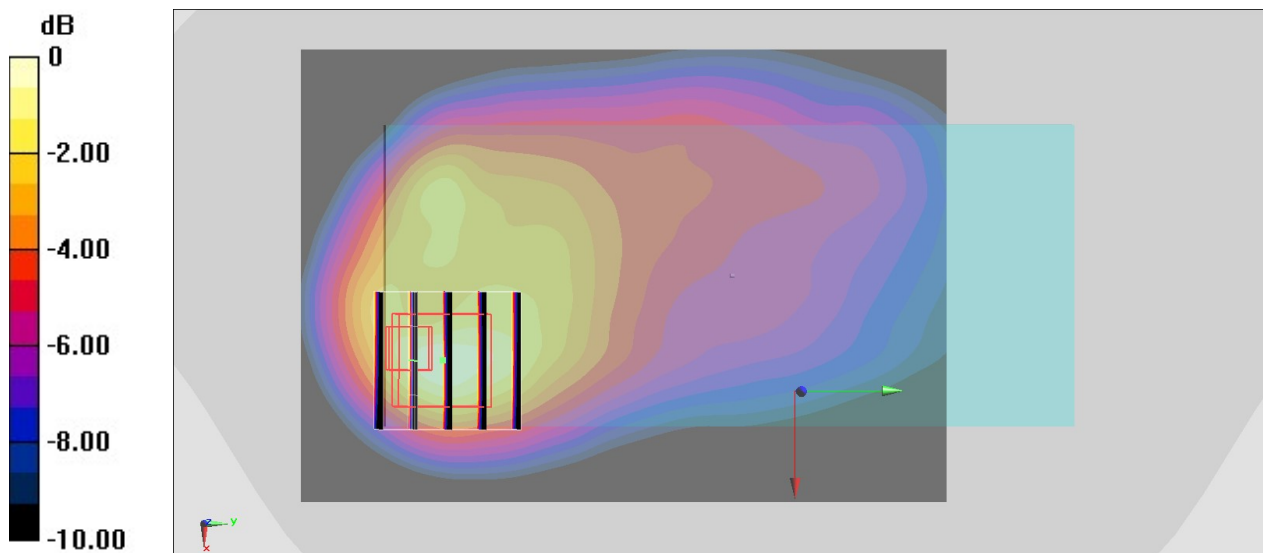
Zoom Scan (5x5x7)/Cube 0: Measurement grid: dx=8mm, dy=8mm, dz=5mm

Reference Value = 26.91 V/m; Power Drift = -0.05 dB

Peak SAR (extrapolated) = 0.975 W/kg

SAR(1 g) = 0.438 W/kg; SAR(10 g) = 0.237 W/kg

Maximum value of SAR (measured) = 0.749 W/kg



0 dB = 0.749 W/kg = -1.26 dBW/kg

#42_LTE Band 41_20M_QPSK_1_99_Bottom Side_5mm_Ch41490

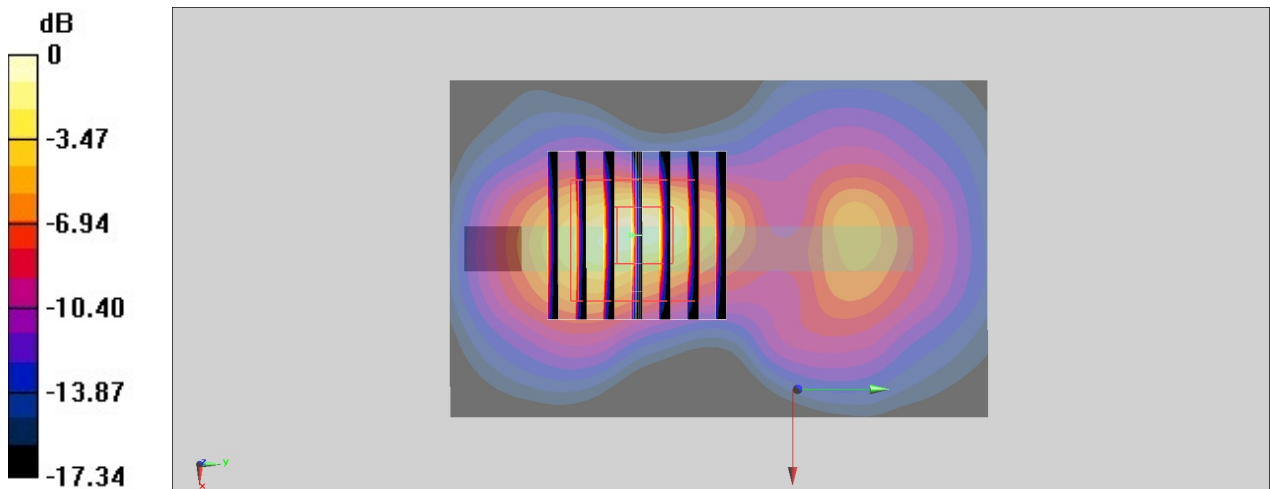
Communication System: LTE; Frequency: 2680 MHz; Duty Cycle: 1:1.59
Medium: HSL_2600_200222 Medium parameters used: $f = 2680$ MHz; $\sigma = 2.068$ S/m; $\epsilon_r = 38.144$;
 $\rho = 1000$ kg/m³
Ambient Temperature : 23.4 °C ; Liquid Temperature : 22.4 °C

DASY5 Configuration

- Probe: EX3DV4 - SN3925; ConvF(7.43, 7.43, 7.43) @ 2680 MHz; Calibrated: 2019/5/24
- Sensor-Surface: 1.4mm (Mechanical Surface Detection)
- Electronics: DAE4 Sn778; Calibrated: 2019/5/21
- Phantom: Twin-SAM V5.0 (30deg probe tilt); Type: QD 000 P40 CD; Serial: 1885
- Measurement SW: DASY52, Version 52.10 (2); SEMCAD X Version 14.6.12 (7450)

Area Scan (51x81x1): Interpolated grid: dx=1.200 mm, dy=1.200 mm
Maximum value of SAR (interpolated) = 0.898 W/kg

Zoom Scan (7x7x7)/Cube 0: Measurement grid: dx=5mm, dy=5mm, dz=5mm
Reference Value = 11.87 V/m; Power Drift = -0.06 dB
Peak SAR (extrapolated) = 1.32 W/kg
SAR(1 g) = 0.623 W/kg; SAR(10 g) = 0.225 W/kg
Maximum value of SAR (measured) = 0.971 W/kg



0 dB = 0.971 W/kg = -0.13 dBW/kg

#43_FR1 n5_20M_PI/2 BPSK_1_1_Back_5mm_Ch167300

Communication System: LTE; Frequency: 837 MHz; Duty Cycle: 1:1

Medium: HSL_850_200226 Medium parameters used: $f = 837$ MHz; $\sigma = 0.934$ S/m; $\epsilon_r = 43.398$; $\rho = 1000$ kg/m³

Ambient Temperature : 23.3 °C ; Liquid Temperature : 22.3 °C

DASY5 Configuration:

- Probe: EX3DV4 - SN3728; ConvF(9.51, 9.51, 9.51) @ 837 MHz; Calibrated: 2020/2/4
- Sensor-Surface: 1.4mm (Mechanical Surface Detection)
- Electronics: DAE3 Sn495; Calibrated: 2019/5/21
- Phantom: SAM_Left; Type: QD000P40CD; Serial: TP:1815
- Measurement SW: DASY52, Version 52.10 (2); SEMCAD X Version 14.6.12 (7470)

Area Scan (71x131x1): Interpolated grid: dx=1.500 mm, dy=1.500 mm

Maximum value of SAR (interpolated) = 0.0937 W/kg

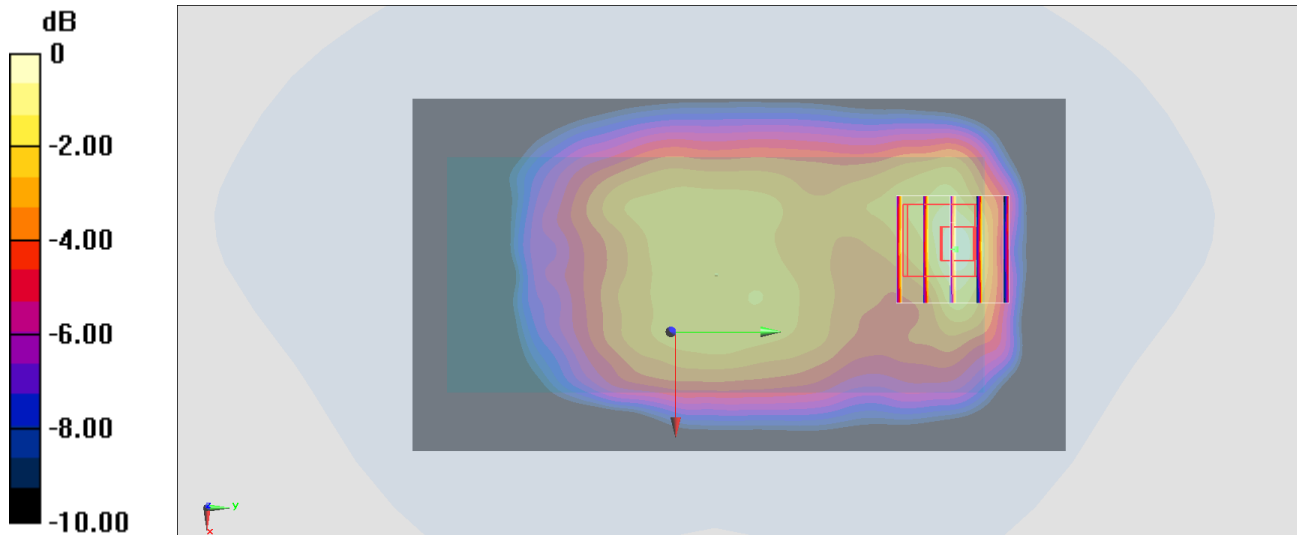
Zoom Scan (5x5x7)/Cube 0: Measurement grid: dx=8mm, dy=8mm, dz=5mm

Reference Value = 8.810 V/m; Power Drift = -0.11 dB

Peak SAR (extrapolated) = 0.104 W/kg

SAR(1 g) = 0.055 W/kg; SAR(10 g) = 0.033 W/kg

Maximum value of SAR (measured) = 0.0763 W/kg



0 dB = 0.0937 W/kg = -10.28 dBW/kg

#45_FR1_n66_20M_PI/2_BPSK_1_1_Top Side_5mm_Ch349000

Communication System: LTE; Frequency: 1745 MHz; Duty Cycle: 1:1

Medium: HSL_1750_200225 Medium parameters used : $f = 1745$ MHz; $\sigma = 1.381$ S/m; $\epsilon_r = 40.713$; $\rho = 1000$ kg/m³

Ambient Temperature : 23.3 °C; Liquid Temperature : 22.3 °C

DASY5 Configuration:

- Probe: EX3DV4 - SN3728; ConvF(8.06, 8.06, 8.06) @ 1745 MHz; Calibrated: 2020/2/4
- Sensor-Surface: 1.4mm (Mechanical Surface Detection)
- Electronics: DAE3 Sn495; Calibrated: 2019/5/21
- Phantom: SAM_Left; Type: QD000P40CD; Serial: TP:1815
- Measurement SW: DASY52, Version 52.10 (2); SEMCAD X Version 14.6.12 (7470)

Area Scan (41x71x1): Interpolated grid: dx=1.500 mm, dy=1.500 mm

Maximum value of SAR (interpolated) = 1.60 W/kg

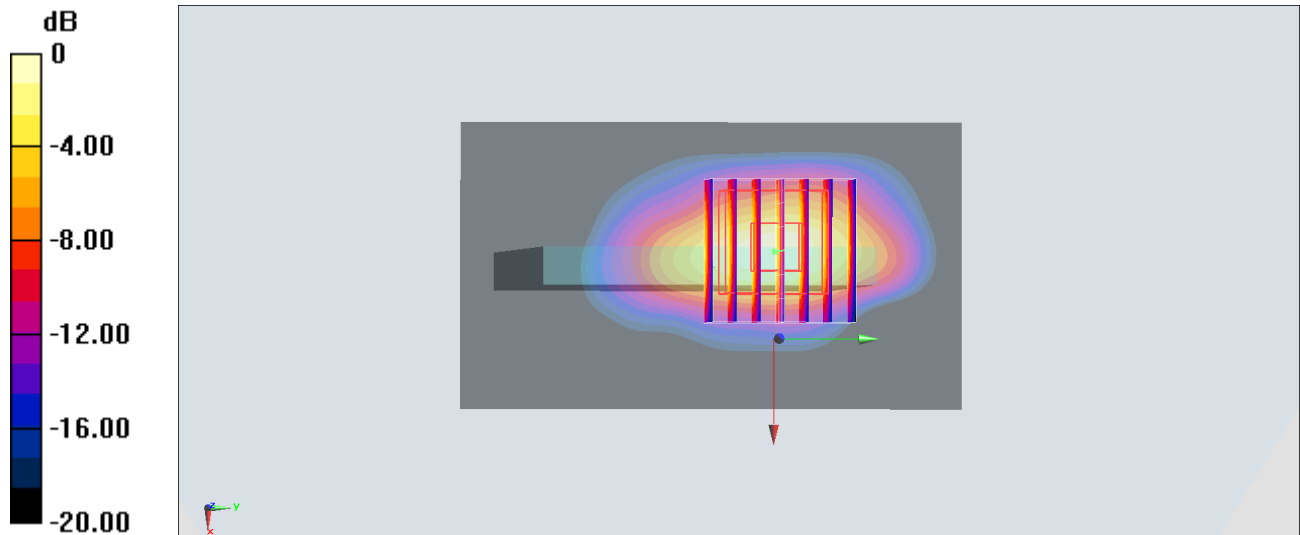
Zoom Scan (7x7x7)/Cube 0: Measurement grid: dx=5mm, dy=5mm, dz=5mm

Reference Value = 25.75 V/m; Power Drift = -0.14 dB

Peak SAR (extrapolated) = 2.33 W/kg

SAR(1 g) = 0.730 W/kg; SAR(10 g) = 0.349 W/kg

Maximum value of SAR (measured) = 1.61 W/kg



0 dB = 1.60 W/kg = 2.04 dBW/kg

#46_FR1_n71_20M_PI/2_BPSK_1_1_Back_5mm_Ch136100

Communication System: LTE; Frequency: 681 MHz; Duty Cycle: 1:1

Medium: HSL_750_200226 Medium parameters used: $f = 681$ MHz; $\sigma = 0.876$ S/m; $\epsilon_r = 44.114$; $\rho = 1000$ kg/m³

Ambient Temperature : 23.3 °C ; Liquid Temperature : 22.3 °C

DASY5 Configuration:

- Probe: EX3DV4 - SN3728; ConvF(9.67, 9.67, 9.67) @ 681 MHz; Calibrated: 2020/2/4
- Sensor-Surface: 1.4mm (Mechanical Surface Detection)
- Electronics: DAE3 Sn495; Calibrated: 2019/5/21
- Phantom: SAM_Left; Type: QD000P40CD; Serial: TP:1815
- Measurement SW: DASY52, Version 52.10 (2); SEMCAD X Version 14.6.12 (7470)

Area Scan (71x131x1): Interpolated grid: dx=1.500 mm, dy=1.500 mm

Maximum value of SAR (interpolated) = 0.172 W/kg

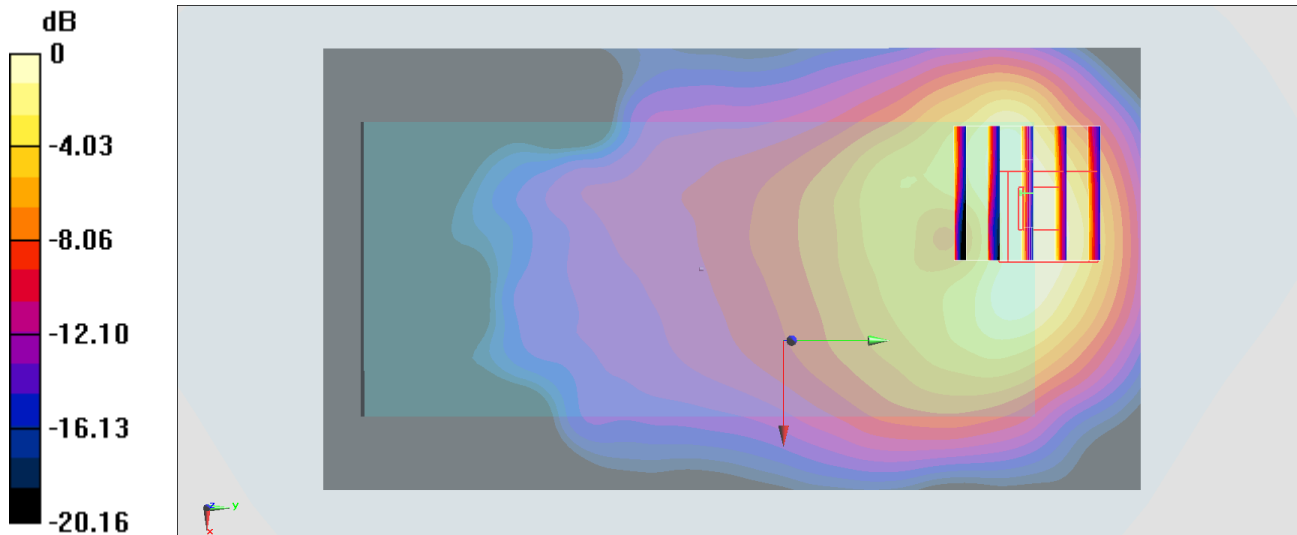
Zoom Scan (5x5x7)/Cube 0: Measurement grid: dx=8mm, dy=8mm, dz=5mm

Reference Value = 15.42 V/m; Power Drift = -0.16 dB

Peak SAR (extrapolated) = 0.316 W/kg

SAR(1 g) = 0.121 W/kg; SAR(10 g) = 0.056 W/kg

Maximum value of SAR (measured) = 0.194 W/kg



#48_WLAN2.4GHz_802.11b 1Mbps_Back_5mm_Ch11;Ant 4+6

Communication System: 802.11b; Frequency: 2462 MHz; Duty Cycle: 1:1

Medium: HSL_2450_200221 Medium parameters used: $f = 2462$ MHz; $\sigma = 1.792$ S/m; $\epsilon_r = 38.961$; $\rho = 1000$ kg/m³

Ambient Temperature : 23.5 °C ; Liquid Temperature : 22.5 °C

DASY5 Configuration:

- Probe: EX3DV4 - SN3728; ConvF(7.33, 7.33, 7.33) @ 2462 MHz; Calibrated: 2020/2/4
- Sensor-Surface: 1.4mm (Mechanical Surface Detection)
- Electronics: DAE3 Sn495; Calibrated: 2019/5/21
- Phantom: SAM_Left; Type: QD000P40CD; Serial: TP:1815
- Measurement SW: DASY52, Version 52.10 (2); SEMCAD X Version 14.6.12 (7470)

Area Scan (91x71x1): Interpolated grid: dx=1.200 mm, dy=1.200 mm

Maximum value of SAR (interpolated) = 0.402 W/kg

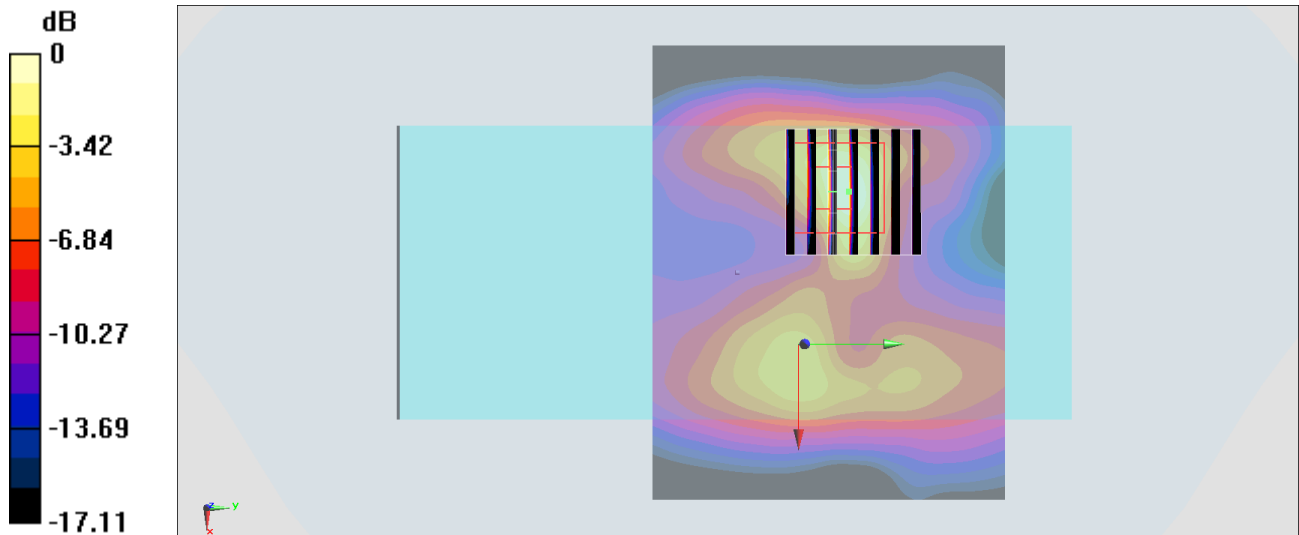
Zoom Scan (7x7x7)/Cube 0: Measurement grid: dx=5mm, dy=5mm, dz=5mm

Reference Value = 15.28 V/m; Power Drift = 0.11 dB

Peak SAR (extrapolated) = 0.797 W/kg

SAR(1 g) = 0.297 W/kg; SAR(10 g) = 0.105 W/kg

Maximum value of SAR (measured) = 0.576 W/kg



0 dB = 0.402 W/kg = -3.96 dBW/kg

#49_WLAN5GHz_802.11ac-VHT80 MCS0_Back_5mm_Ch42;Ant 3+6

Communication System: 802.11ac; Frequency: 5210 MHz; Duty Cycle: 1:1

Medium: HSL_5G_200224 Medium parameters used: $f = 5210$ MHz; $\sigma = 4.534$ S/m; $\epsilon_r = 36.765$; $\rho = 1000$ kg/m³

Ambient Temperature : 23.6 °C ; Liquid Temperature : 22.6 °C

DASY5 Configuration:

- Probe: EX3DV4 - SN3728; ConvF(5.14, 5.14, 5.14) @ 5210 MHz; Calibrated: 2020/2/4
- Sensor-Surface: 1.4mm (Mechanical Surface Detection)
- Electronics: DAE3 Sn495; Calibrated: 2019/5/21
- Phantom: SAM_Left; Type: QD000P40CD; Serial: TP:1815
- Measurement SW: DASY52, Version 52.10 (2); SEMCAD X Version 14.6.12 (7470)

Area Scan (101x111x1): Interpolated grid: dx=1.000 mm, dy=1.000 mm

Maximum value of SAR (interpolated) = 0.139 W/kg

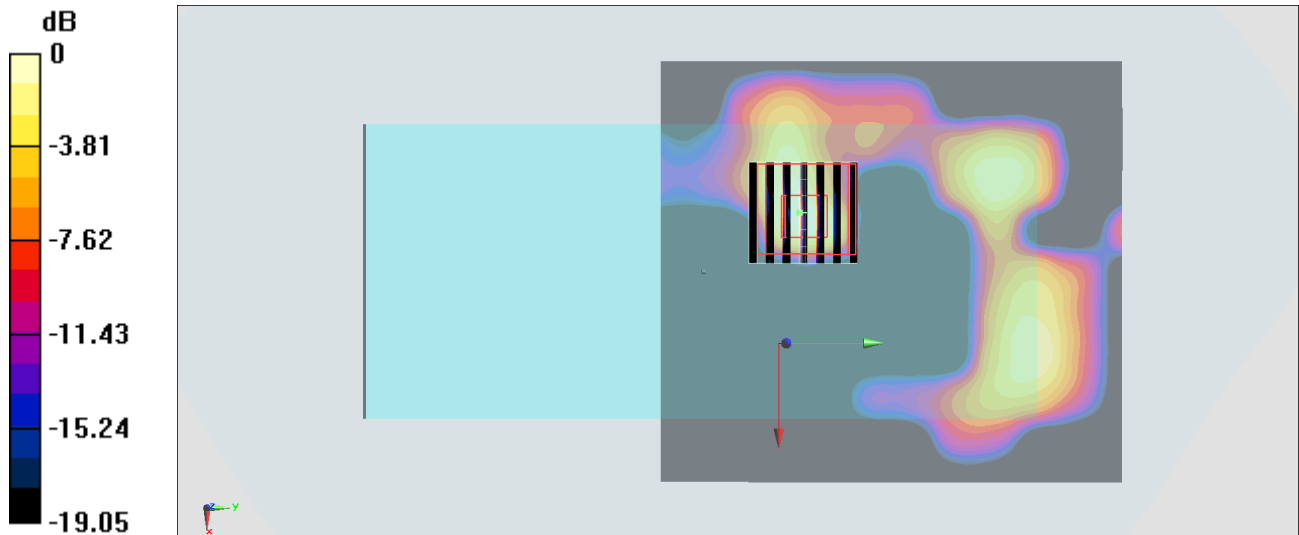
Zoom Scan (7x7x7)/Cube 0: Measurement grid: dx=4mm, dy=4mm, dz=1.4mm

Reference Value = 5.656 V/m; Power Drift = 0.16 dB

Peak SAR (extrapolated) = 1.51 W/kg

SAR(1 g) = 0.103 W/kg; SAR(10 g) = 0.016 W/kg

Maximum value of SAR (measured) = 0.347 W/kg



0 dB = 0.139 W/kg = -8.57 dBW/kg

#50_WLAN5GHz_802.11ac-VHT80 MCS0_Back_5mm_Ch155;Ant 3+6

Communication System: 802.11ac; Frequency: 5775 MHz; Duty Cycle: 1:1

Medium: HSL_5G_200224 Medium parameters used: $f = 5775$ MHz; $\sigma = 5.137$ S/m; $\epsilon_r = 36.054$; $\rho = 1000$ kg/m³

Ambient Temperature : 23.5 °C ; Liquid Temperature : 22.5 °C

DASY5 Configuration:

- Probe: EX3DV4 - SN3728; ConvF(4.78, 4.78, 4.78) @ 5775 MHz; Calibrated: 2020/2/4
- Sensor-Surface: 1.4mm (Mechanical Surface Detection)
- Electronics: DAE3 Sn495; Calibrated: 2019/5/21
- Phantom: SAM_Left; Type: QD000P40CD; Serial: TP:1815
- Measurement SW: DASY52, Version 52.10 (2); SEMCAD X Version 14.6.12 (7470)

Area Scan (101x111x1): Interpolated grid: dx=1.000 mm, dy=1.000 mm

Maximum value of SAR (interpolated) = 0.310 W/kg

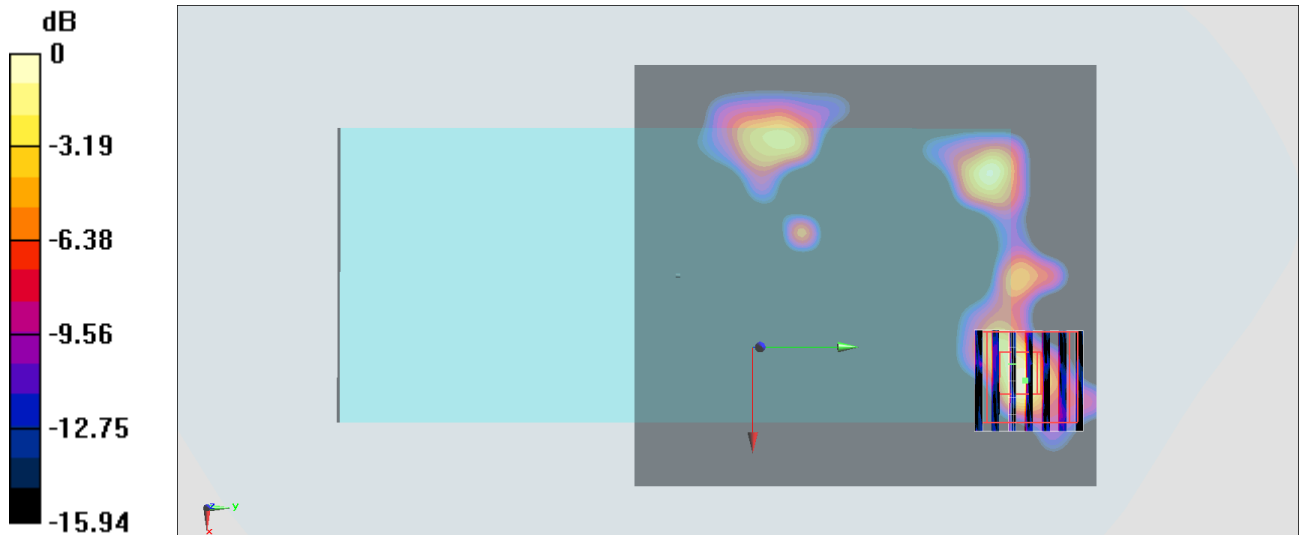
Zoom Scan (7x7x7)/Cube 0: Measurement grid: dx=4mm, dy=4mm, dz=1.4mm

Reference Value = 5.756 V/m; Power Drift = -0.16 dB

Peak SAR (extrapolated) = 0.519 W/kg

SAR(1 g) = 0.089 W/kg; SAR(10 g) = 0.036 W/kg

Maximum value of SAR (measured) = 0.199 W/kg



0 dB = 0.310 W/kg = -5.09 dBW/kg

#51_Bluetooth_1Mbps_Back_5mm_Ch39

Communication System: Bluetooth; Frequency: 2441 MHz; Duty Cycle: 1:1.301

Medium: HSL_2450_200221 Medium parameters used: $f = 2441$ MHz; $\sigma = 1.762$ S/m; $\epsilon_r = 38.992$; $\rho = 1000$ kg/m³

Ambient Temperature : 23.5 °C ; Liquid Temperature : 22.5 °C

DASY5 Configuration:

- Probe: EX3DV4 - SN3728; ConvF(7.33, 7.33, 7.33) @ 2441 MHz; Calibrated: 2020/2/4
- Sensor-Surface: 1.4mm (Mechanical Surface Detection)
- Electronics: DAE3 Sn495; Calibrated: 2019/5/21
- Phantom: SAM_Left; Type: QD000P40CD; Serial: TP:1815
- Measurement SW: DASY52, Version 52.10 (2); SEMCAD X Version 14.6.12 (7470)

Area Scan (91x61x1): Interpolated grid: dx=1.200 mm, dy=1.200 mm

Maximum value of SAR (interpolated) = 0.381 W/kg

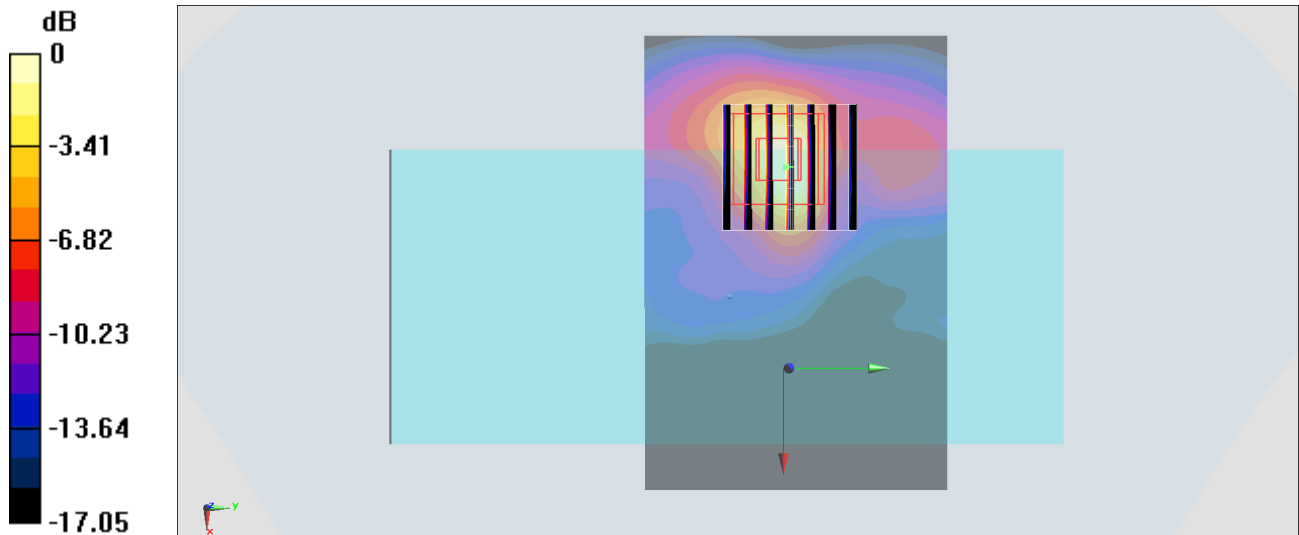
Zoom Scan (7x7x7)/Cube 0: Measurement grid: dx=5mm, dy=5mm, dz=5mm

Reference Value = 6.925 V/m; Power Drift = -0.03 dB

Peak SAR (extrapolated) = 1.18 W/kg

SAR(1 g) = 0.208 W/kg; SAR(10 g) = 0.065 W/kg

Maximum value of SAR (measured) = 0.507 W/kg



0 dB = 0.381 W/kg = -4.19 dBW/kg