

Test Laboratory: Sporton International Inc.

#### Device Under Test Properties

Manufacturer	Dimensions [mm]	IMEI	DUT Type
	160.0 x 70.0 x 8.0		Phone

#### Exposure Conditions

Phantom Section	Position, Test Distance [mm]	Frequency [MHz]	Conversion Factor
5G	BACK, 2.00	27900.0	1.0

#### Hardware Setup

Phantom	Medium	Probe, Calibration Date	DAE, Calibration Date
mmWave - xxxx	Air -	EUmmWV4 - SN9461_F1-78GHz, 2019-11-05	DAE4 Sn376, 2019-12-06

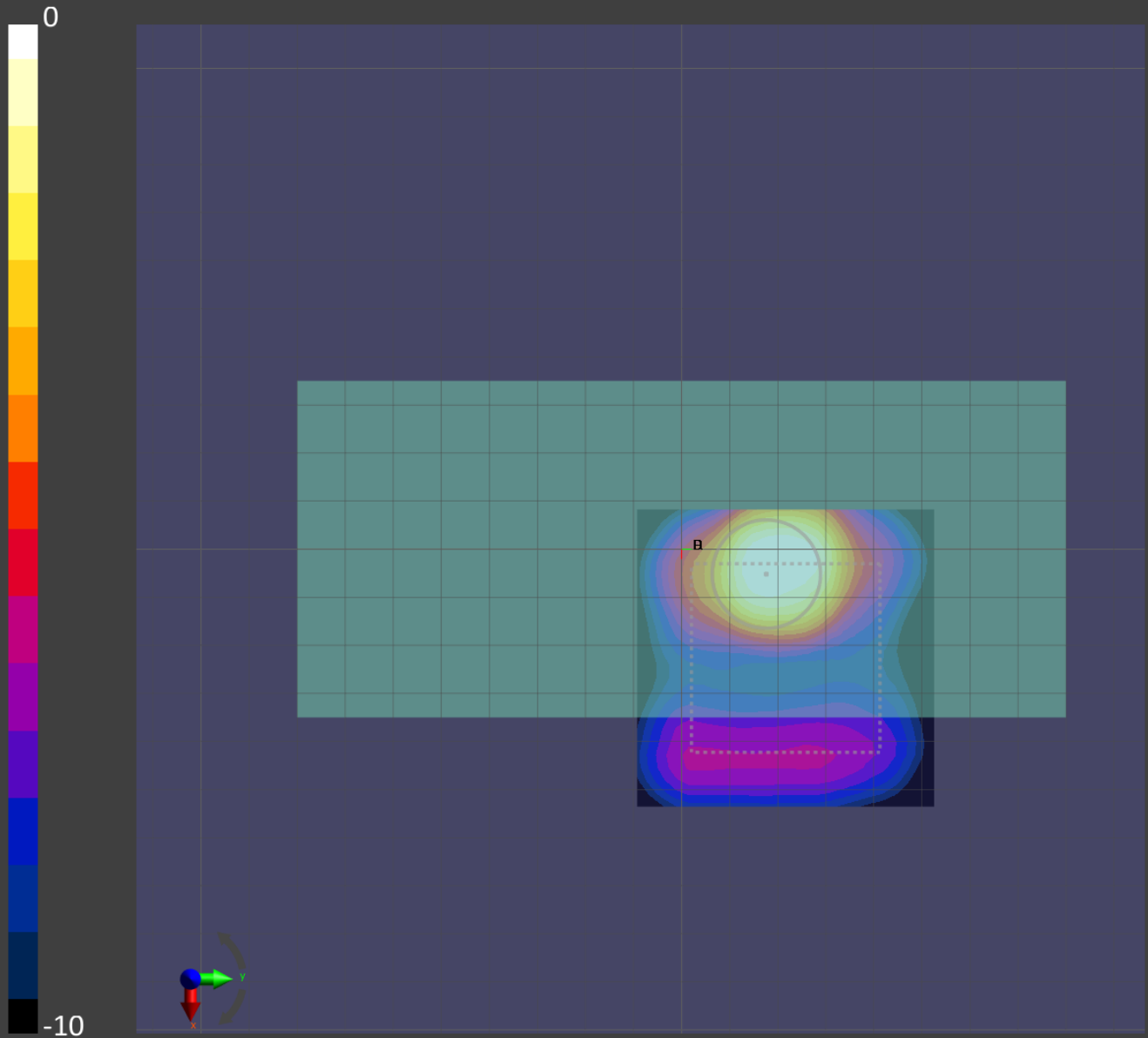
#### Scans Setup

Grid Extents [mm]	60.0 x 60.0
Grid Steps [lambda]	0.25 x 0.25
Sensor Surface [mm]	2.0

#### Measurement Results

Date	2020-02-08, 02:43
Avg. Area [cm <sup>2</sup> ]	4.00
S <sub>avg inc</sub> [W/m <sup>2</sup> ]	2.70
S <sub>avg tot</sub> [W/m <sup>2</sup> ]	3.21
S <sub>peak</sub> [W/m <sup>2</sup> ]	13.9
E <sub>peak</sub> [V/m]	70.2
H <sub>peak</sub> [A/m]	0.215
Power Drift [dB]	-0.10

Averaged [4.0 cm<sup>2</sup>] |Re{S}|(x,y,z,f0) [dB(3.21W/m<sup>2</sup>)]



Test Laboratory: Sporton International Inc.

#### Device Under Test Properties

Manufacturer	Dimensions [mm]	IMEI	DUT Type
	160.0 x 70.0 x 8.0		Phone

#### Exposure Conditions

Phantom Section	Position, Test Distance [mm]	Frequency [MHz]	Conversion Factor
5G	BACK, 2.00	38500.0	1.0

#### Hardware Setup

Phantom	Medium	Probe, Calibration Date	DAE, Calibration Date
mmWave - xxxx	Air -	EUmmWV4 - SN9461_F1-78GHz, 2019-11-05	DAE4 Sn376, 2019-12-06

#### Scans Setup

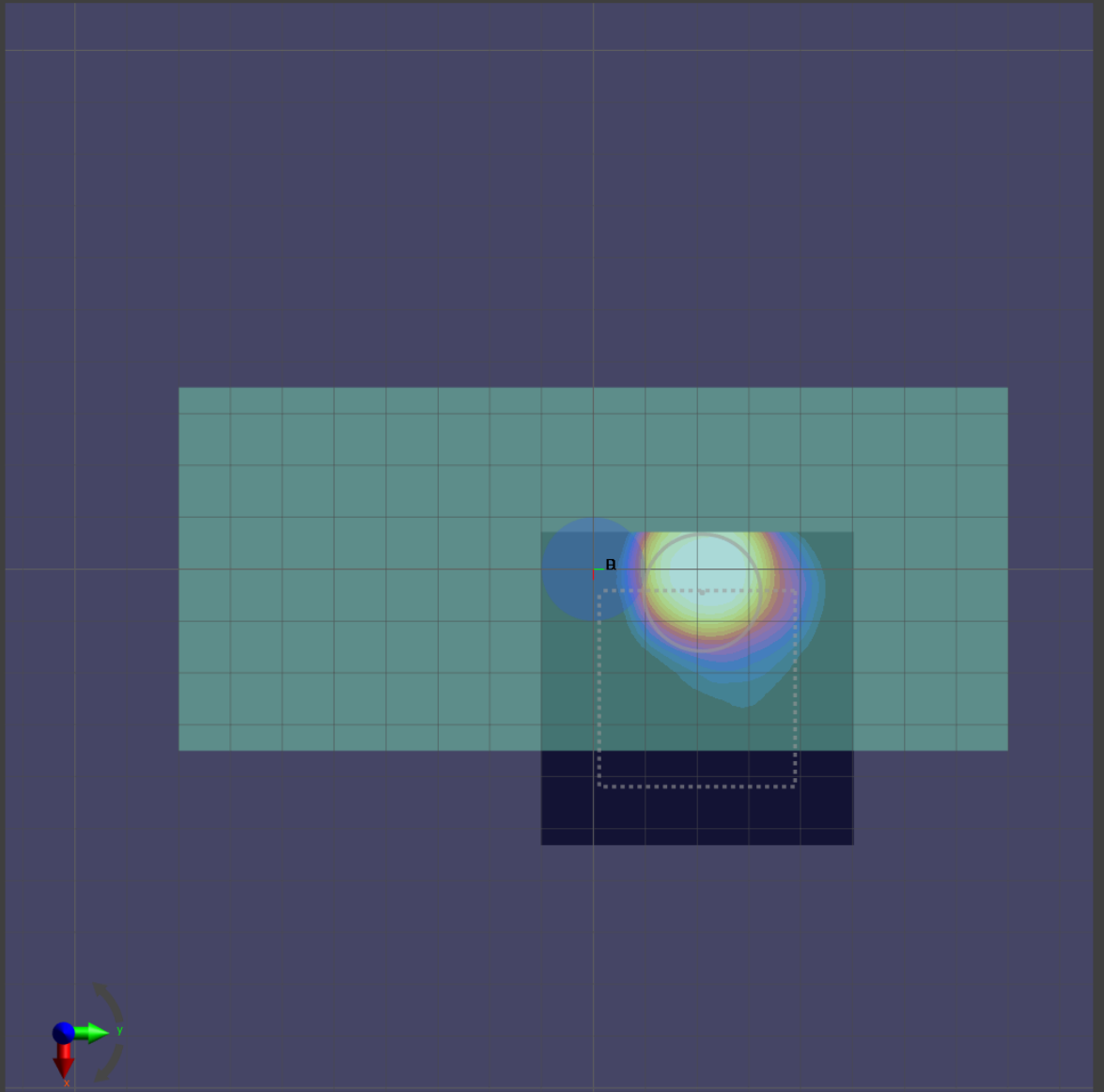
Grid Extents [mm]	60.0 x 60.0
Grid Steps [ $\lambda$ ]	0.25 x 0.25
Sensor Surface [mm]	2.0

#### Measurement Results

Date	2020-02-08, 05:04
Avg. Area [ $\text{cm}^2$ ]	4.00
$S_{\text{avg inc}}$ [ $\text{W}/\text{m}^2$ ]	2.85
$S_{\text{avg tot}}$ [ $\text{W}/\text{m}^2$ ]	3.91
$S_{\text{peak}}$ [ $\text{W}/\text{m}^2$ ]	27.0
$E_{\text{peak}}$ [V/m]	90.9
$H_{\text{peak}}$ [A/m]	0.312
Power Drift [dB]	-0.08

Averaged [4.0 cm<sup>2</sup>] |Re{S}|(x,y,z,f0) [dB(3.91W/m<sup>2</sup>)]

0



-10