

## System Check\_Head\_1750MHz

### DUT: D1750V2-1112

Communication System: CW; Frequency: 1750 MHz; Duty Cycle: 1:1

Medium: HSL\_1750\_200203 Medium parameters used:  $f = 1750$  MHz;  $\sigma = 1.395$  S/m;  $\epsilon_r = 40.719$ ;  $\rho = 1000$  kg/m<sup>3</sup>

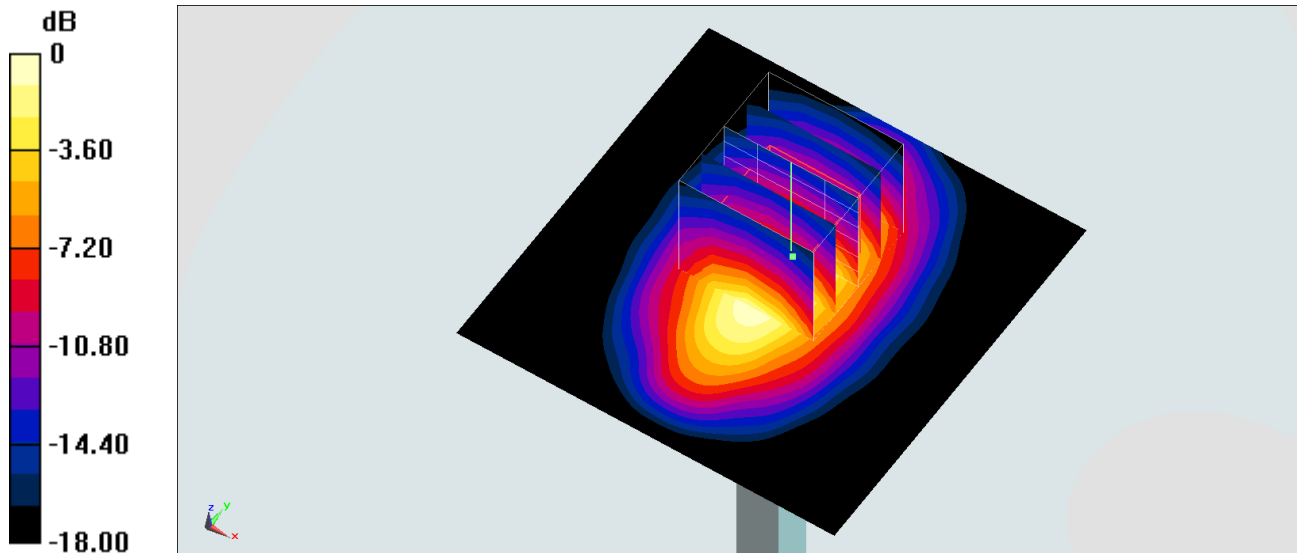
Ambient Temperature : 23.3 °C; Liquid Temperature : 22.3 °C

DASY5 Configuration:

- Probe: EX3DV4 - SN7306; ConvF(8.51, 8.51, 8.51); Calibrated: 2019/7/22;
- Sensor-Surface: 1.4mm (Mechanical Surface Detection)
- Electronics: DAE3 Sn577; Calibrated: 2019/9/17
- Phantom: SAM\_Left; Type: QD000P40CD; Serial: TP:1801
- Measurement SW: DASY52, Version 52.8 (8); SEMCAD X Version 14.6.10 (7373)

**Pin=250mW/Area Scan (61x61x1):** Interpolated grid: dx=1.500 mm, dy=1.500 mm  
Maximum value of SAR (interpolated) = 16.2 W/kg

**Pin=250mW/Zoom Scan (5x5x7)/Cube 0:** Measurement grid: dx=8mm, dy=8mm, dz=5mm  
Reference Value = 105.8 V/m; Power Drift = -0.06 dB  
Peak SAR (extrapolated) = 19.8 W/kg  
**SAR(1 g) = 9.21 W/kg; SAR(10 g) = 4.69 W/kg**  
Maximum value of SAR (measured) = 15.3 W/kg



0 dB = 15.3 W/kg = 11.85 dBW/kg

## System Check\_Head\_1900MHz

### DUT: D1900V2-5d041

Communication System: CW; Frequency: 1900 MHz; Duty Cycle: 1:1

Medium: HSL\_1900\_200202 Medium parameters used:  $f = 1900$  MHz;  $\sigma = 1.407$  S/m;  $\epsilon_r = 40.291$ ;  $\rho = 1000$  kg/m<sup>3</sup>

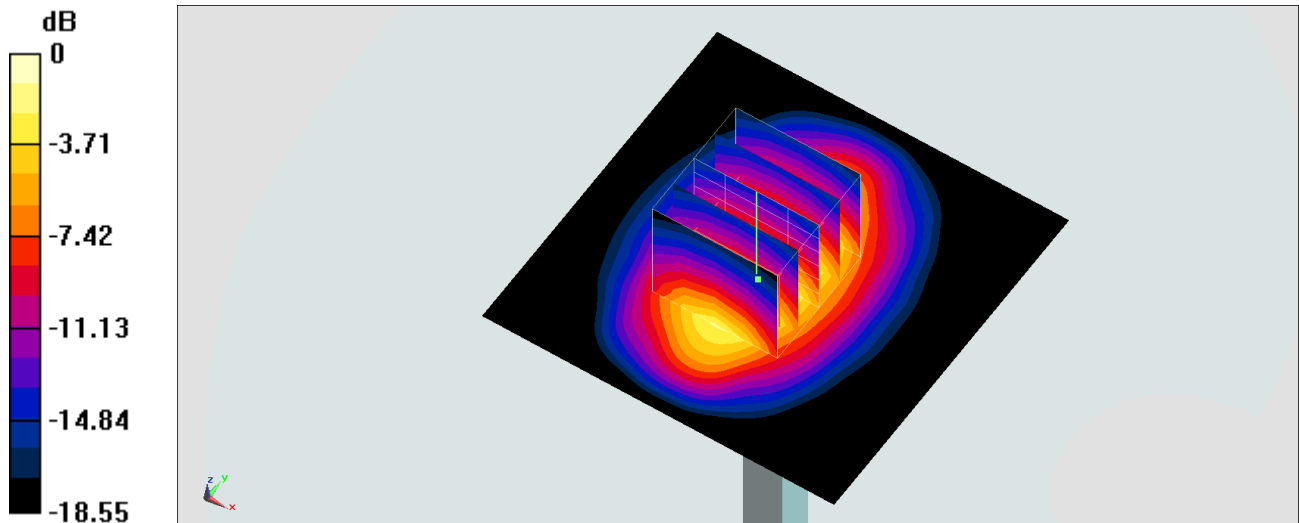
Ambient Temperature : 23.4 °C; Liquid Temperature : 22.4 °C

DASY5 Configuration:

- Probe: ES3DV3 - SN3169; ConvF(5.14, 5.14, 5.14) @ 1900 MHz; Calibrated: 2019/5/24
- Sensor-Surface: 3mm (Mechanical Surface Detection)
- Electronics: DAE4 Sn376; Calibrated: 2019/12/6
- Phantom: SAM\_Right; Type: SAM; Serial: TP:1446
- Measurement SW: DASY52, Version 52.10 (2); SEMCAD X Version 14.6.12 (7450)

**Pin=250mW/Area Scan (61x61x1):** Interpolated grid: dx=1.500 mm, dy=1.500 mm  
Maximum value of SAR (interpolated) = 13.2 W/kg

**Pin=250mW/Zoom Scan (5x5x7)/Cube 0:** Measurement grid: dx=8mm, dy=8mm, dz=5mm  
Reference Value = 97.94 V/m; Power Drift = -0.10 dB  
Peak SAR (extrapolated) = 18.2 W/kg  
**SAR(1 g) = 9.9 W/kg; SAR(10 g) = 5.12 W/kg**  
Maximum value of SAR (measured) = 12.5 W/kg



0 dB = 12.5 W/kg = 10.97 dBW/kg

Test Laboratory: Sporton International Inc.

#### Device Under Test Properties

| Manufacturer | Dimensions [mm]       | IMEI | DUT Type            |
|--------------|-----------------------|------|---------------------|
|              | 100.0 x 100.0 x 100.0 |      | Verification source |

#### Exposure Conditions

| Phantom Section | Position, Test Distance [mm] | Frequency [MHz] | Conversion Factor |
|-----------------|------------------------------|-----------------|-------------------|
| 5G              | FRONT, 5.55                  | 30000.0         | 1.0               |

#### Hardware Setup

| Phantom       | Medium | Probe, Calibration Date               | DAE, Calibration Date  |
|---------------|--------|---------------------------------------|------------------------|
| mmWave - xxxx | Air -  | EUmmWV4 - SN9461_F1-78GHz, 2019-11-05 | DAE4 Sn376, 2019-12-06 |

#### Scans Setup

|                          |             |
|--------------------------|-------------|
| Grid Extents [mm]        | 60.0 x 60.0 |
| Grid Steps [ $\lambda$ ] | 0.25 x 0.25 |
| Sensor Surface [mm]      | 5.55        |

#### Measurement Results

|  |                   |
|--|-------------------|
| Date   | 2020-02-02, 01:07 |
| Avg. Area [ $\text{cm}^2$ ]                    | 4.00              |
| $S_{\text{avg inc}}$ [ $\text{W}/\text{m}^2$ ] | 30.1              |
| $S_{\text{avg tot}}$ [ $\text{W}/\text{m}^2$ ] | 30.8              |
| $S_{\text{peak}}$ [ $\text{W}/\text{m}^2$ ]    | 45.1              |
| $E_{\text{peak}}$ [V/m]                        | 129               |
| $H_{\text{peak}}$ [A/m]                        | 0.357             |
| Power Drift [dB]                               | -0.03             |

Averaged [4.0 cm<sup>2</sup>] |Re{S}|(x,y,z,f0) [dB(30.5W/m<sup>2</sup>)]

0



-10

