

**#01\_GSM850\_GPRS (2 Tx slots)\_Right Cheek\_Ch128**

Communication System: GSM850; Frequency: 824.2 MHz; Duty Cycle: 1:4.15

Medium: HSL\_850\_190811 Medium parameters used :  $f = 824.2$  MHz;  $\sigma = 0.884$  S/m;  $\epsilon_r = 41.793$ ;  $\rho = 1000$  kg/m<sup>3</sup>

Ambient Temperature : 23.4 °C; Liquid Temperature : 22.4 °C

DASY5 Configuration:

- Probe: EX3DV4 - SN3931; ConvF(10.07, 10.07, 10.07) @ 824.2 MHz; Calibrated: 2018/9/27
- Sensor-Surface: 1.4mm (Mechanical Surface Detection)
- Electronics: DAE4 Sn1399; Calibrated: 2018/11/16
- Phantom: SAM\_Right; Type: SAM; Serial: TP:1446
- Measurement SW: DASY52, Version 52.10 (2); SEMCAD X Version 14.6.12 (7470)

**Area Scan (61x121x1):** Interpolated grid: dx=1.500 mm, dy=1.500 mm

Maximum value of SAR (interpolated) = 0.115 W/kg

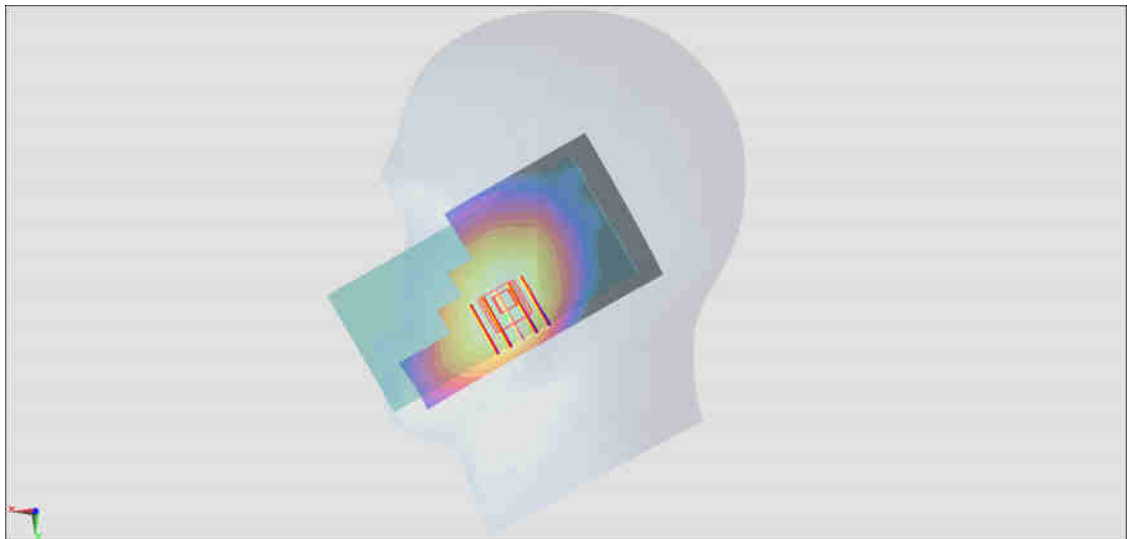
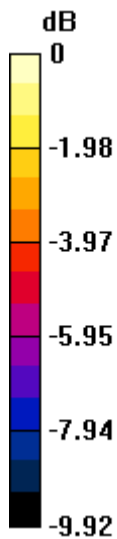
**Zoom Scan (5x5x7)/Cube 0:** Measurement grid: dx=8mm, dy=8mm, dz=5mm

Reference Value = 11.71 V/m; Power Drift = -0.01 dB

Peak SAR (extrapolated) = 0.122 W/kg

**SAR(1 g) = 0.097 W/kg; SAR(10 g) = 0.074 W/kg**

Maximum value of SAR (measured) = 0.113 W/kg



0 dB = 0.113 W/kg = -9.47 dBW/kg

**#02\_GSM1900\_GPRS (2 Tx slots)\_Left Cheek\_Ch512**

Communication System: PCS; Frequency: 1850.2 MHz; Duty Cycle: 1:4.15

Medium: HSL\_1900\_190809 Medium parameters used:  $f = 1850.2$  MHz;  $\sigma = 1.337$  S/m;  $\epsilon_r = 40.564$ ;  $\rho = 1000$  kg/m<sup>3</sup>

Ambient Temperature : 23.3 °C ; Liquid Temperature : 22.3 °C

DASY5 Configuration:

- Probe: EX3DV4 - SN3931; ConvF(8.33, 8.33, 8.33) @ 1850.2 MHz; Calibrated: 2018/9/27
- Sensor-Surface: 1.4mm (Mechanical Surface Detection)
- Electronics: DAE4 Sn1399; Calibrated: 2018/11/16
- Phantom: SAM\_Left; Type: QD000P40CD; Serial: TP:1815
- Measurement SW: DASY52, Version 52.10 (2); SEMCAD X Version 14.6.12 (7470)

**Area Scan (61x121x1):** Interpolated grid: dx=1.500 mm, dy=1.500 mm

Maximum value of SAR (interpolated) = 0.226 W/kg

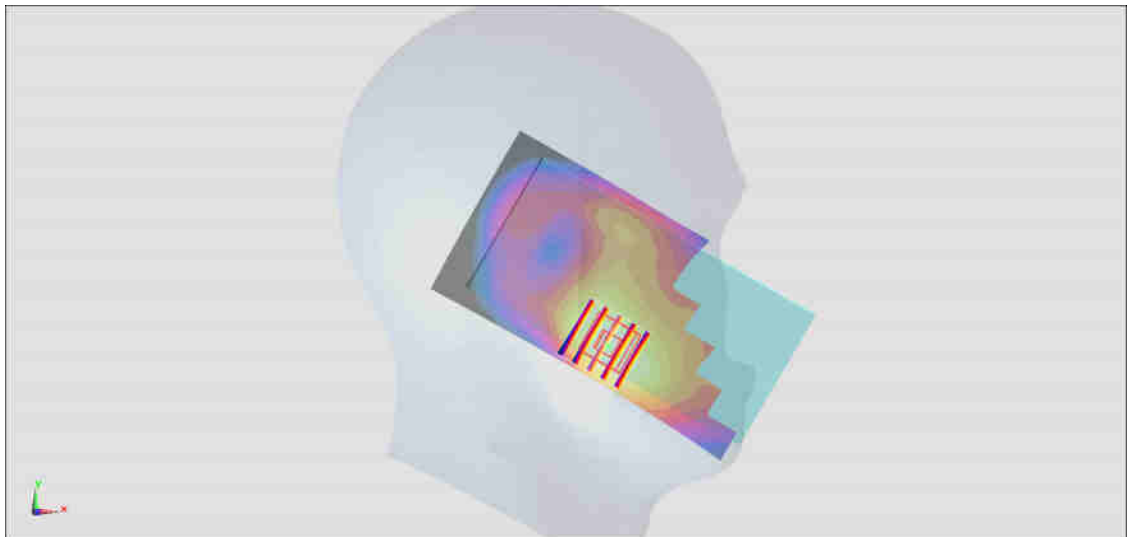
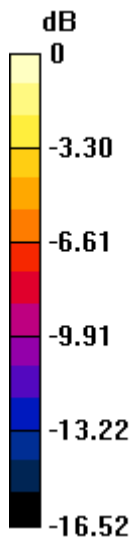
**Zoom Scan (5x5x7)/Cube 0:** Measurement grid: dx=8mm, dy=8mm, dz=5mm

Reference Value = 10.65 V/m; Power Drift = 0.05 dB

Peak SAR (extrapolated) = 0.235 W/kg

**SAR(1 g) = 0.151 W/kg; SAR(10 g) = 0.093 W/kg**

Maximum value of SAR (measured) = 0.206 W/kg



0 dB = 0.206 W/kg = -6.86 dBW/kg

**#03\_WCDMA II\_RMC 12.2Kbps\_Left Cheek\_Ch9262**

Communication System: WCDMA; Frequency: 1852.4 MHz; Duty Cycle: 1:1

Medium: HSL\_1900\_190809 Medium parameters used:  $f = 1852.4$  MHz;  $\sigma = 1.339$  S/m;  $\epsilon_r = 40.557$ ;  $\rho = 1000$  kg/m<sup>3</sup>

Ambient Temperature : 23.3 °C ; Liquid Temperature : 22.3 °C

DASY5 Configuration:

- Probe: EX3DV4 - SN3931; ConvF(8.33, 8.33, 8.33) @ 1852.4 MHz; Calibrated: 2018/9/27
- Sensor-Surface: 1.4mm (Mechanical Surface Detection)
- Electronics: DAE4 Sn1399; Calibrated: 2018/11/16
- Phantom: SAM\_Left; Type: QD000P40CD; Serial: TP:1815
- Measurement SW: DASY52, Version 52.10 (2); SEMCAD X Version 14.6.12 (7470)

**Area Scan (61x121x1):** Interpolated grid: dx=1.500 mm, dy=1.500 mm

Maximum value of SAR (interpolated) = 0.395 W/kg

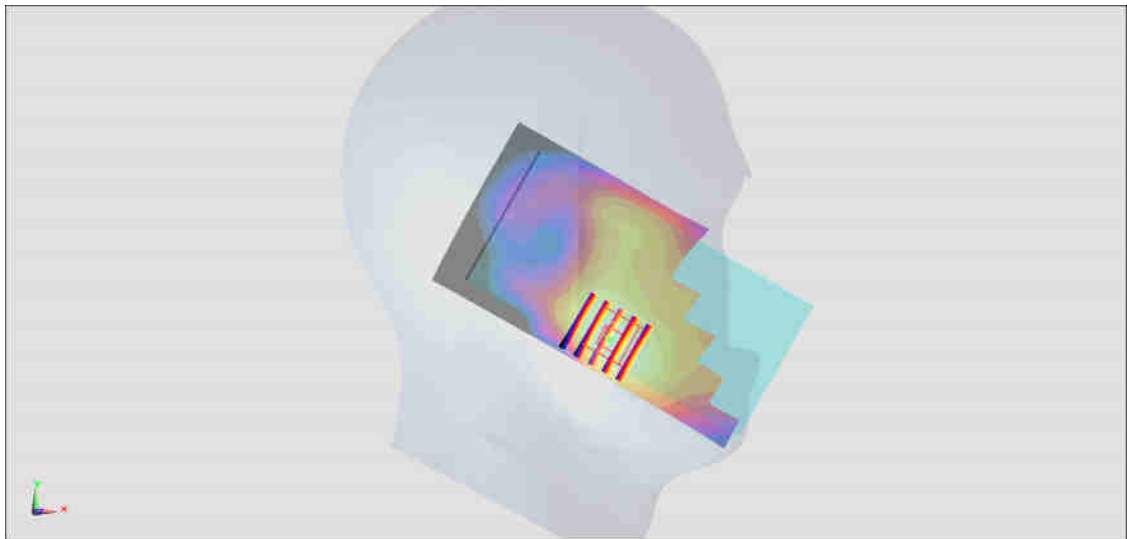
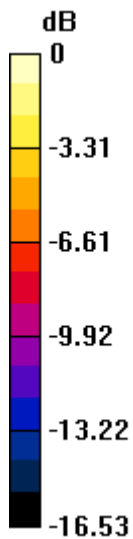
**Zoom Scan (5x5x7)/Cube 0:** Measurement grid: dx=8mm, dy=8mm, dz=5mm

Reference Value = 13.87 V/m; Power Drift = 0.09 dB

Peak SAR (extrapolated) = 0.409 W/kg

**SAR(1 g) = 0.260 W/kg; SAR(10 g) = 0.159 W/kg**

Maximum value of SAR (measured) = 0.355 W/kg



0 dB = 0.355 W/kg = -4.50 dBW/kg

**#04\_WCDMA IV\_RMC 12.2Kbps\_Left Cheek\_Ch1413**

Communication System: WCDMA; Frequency: 1732.6 MHz; Duty Cycle: 1:1

Medium: HSL\_1750\_190809 Medium parameters used:  $f = 1733$  MHz;  $\sigma = 1.329$  S/m;  $\epsilon_r = 40.907$ ;  $\rho = 1000$  kg/m<sup>3</sup>

Ambient Temperature : 23.3 °C; Liquid Temperature : 22.3 °C

DASY5 Configuration:

- Probe: EX3DV4 - SN3931; ConvF(8.62, 8.62, 8.62) @ 1732.6 MHz; Calibrated: 2018/9/27
- Sensor-Surface: 1.4mm (Mechanical Surface Detection)
- Electronics: DAE4 Sn1399; Calibrated: 2018/11/16
- Phantom: SAM\_Left; Type: QD000P40CD; Serial: TP:1815
- Measurement SW: DASY52, Version 52.10 (2); SEMCAD X Version 14.6.12 (7470)

**Area Scan (61x121x1):** Interpolated grid: dx=1.500 mm, dy=1.500 mm

Maximum value of SAR (interpolated) = 0.287 W/kg

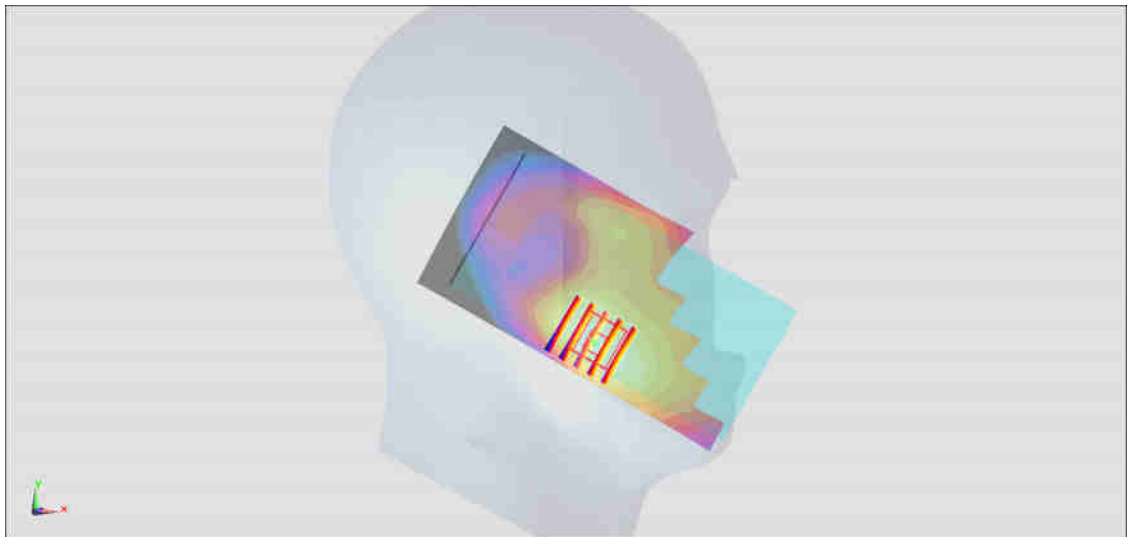
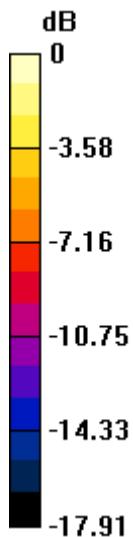
**Zoom Scan (5x5x7)/Cube 0:** Measurement grid: dx=8mm, dy=8mm, dz=5mm

Reference Value = 11.94 V/m; Power Drift = 0.08 dB

Peak SAR (extrapolated) = 0.298 W/kg

**SAR(1 g) = 0.196 W/kg; SAR(10 g) = 0.124 W/kg**

Maximum value of SAR (measured) = 0.261 W/kg



0 dB = 0.261 W/kg = -5.83 dBW/kg

**#05\_WCDMA V\_RMC 12.2Kbps\_Right Cheek\_Ch4182**

Communication System: WCDMA; Frequency: 836.4 MHz; Duty Cycle: 1:1

Medium: HSL\_850\_190811 Medium parameters used :  $f = 836.4$  MHz;  $\sigma = 0.894$  S/m;  $\epsilon_r = 41.605$ ;  $\rho = 1000$  kg/m<sup>3</sup>

Ambient Temperature : 23.4 °C; Liquid Temperature : 22.4 °C

DASY5 Configuration:

- Probe: EX3DV4 - SN3931; ConvF(10.07, 10.07, 10.07) @ 836.4 MHz; Calibrated: 2018/9/27
- Sensor-Surface: 1.4mm (Mechanical Surface Detection)
- Electronics: DAE4 Sn1399; Calibrated: 2018/11/16
- Phantom: SAM\_Right; Type: SAM; Serial: TP:1446
- Measurement SW: DASY52, Version 52.10 (2); SEMCAD X Version 14.6.12 (7470)

**Area Scan (61x121x1):** Interpolated grid: dx=1.500 mm, dy=1.500 mm

Maximum value of SAR (interpolated) = 0.255 W/kg

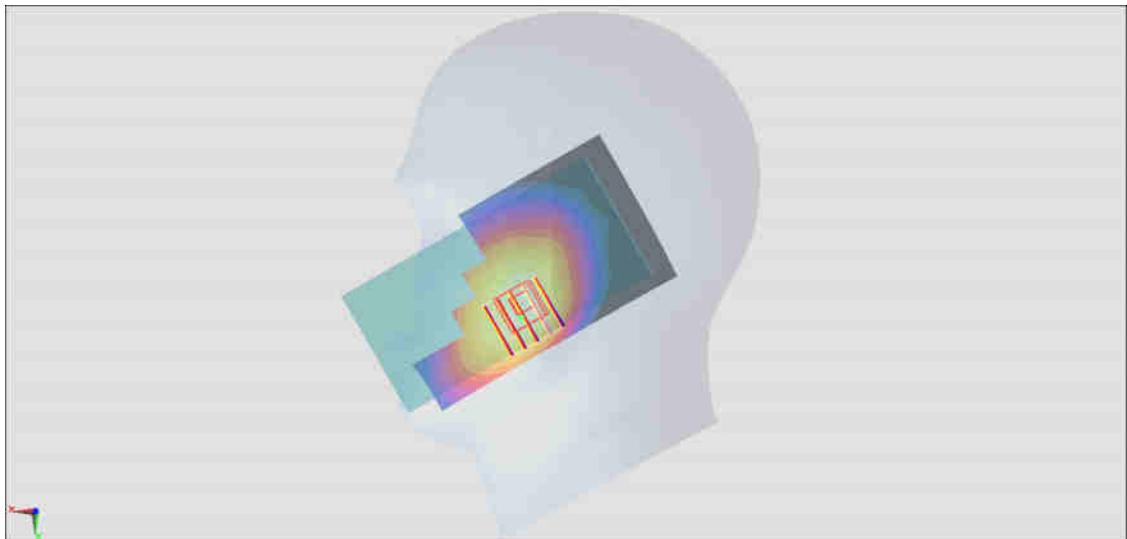
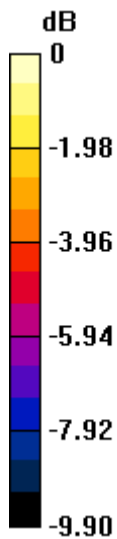
**Zoom Scan (5x5x7)/Cube 0:** Measurement grid: dx=8mm, dy=8mm, dz=5mm

Reference Value = 18.49 V/m; Power Drift = -0.06 dB

Peak SAR (extrapolated) = 0.301 W/kg

**SAR(1 g) = 0.238 W/kg; SAR(10 g) = 0.183 W/kg**

Maximum value of SAR (measured) = 0.278 W/kg



0 dB = 0.278 W/kg = -5.56 dBW/kg

**#06\_LTE Band 2\_20M\_QPSK\_1\_0\_Right Cheek\_Ch18900**

Communication System: LTE; Frequency: 1880 MHz; Duty Cycle: 1:1

Medium: HSL\_1900\_190809 Medium parameters used:  $f = 1880$  MHz;  $\sigma = 1.365$  S/m;  $\epsilon_r = 40.467$ ;  $\rho = 1000$  kg/m<sup>3</sup>

Ambient Temperature : 23.3 °C ; Liquid Temperature : 22.3 °C

DASY5 Configuration:

- Probe: EX3DV4 - SN3931; ConvF(8.33, 8.33, 8.33) @ 1880 MHz; Calibrated: 2018/9/27
- Sensor-Surface: 1.4mm (Mechanical Surface Detection)
- Electronics: DAE4 Sn1399; Calibrated: 2018/11/16
- Phantom: SAM\_Left; Type: QD000P40CD; Serial: TP:1815
- Measurement SW: DASY52, Version 52.10 (2); SEMCAD X Version 14.6.12 (7470)

**Area Scan (61x121x1):** Interpolated grid: dx=1.500 mm, dy=1.500 mm

Maximum value of SAR (interpolated) = 0.225 W/kg

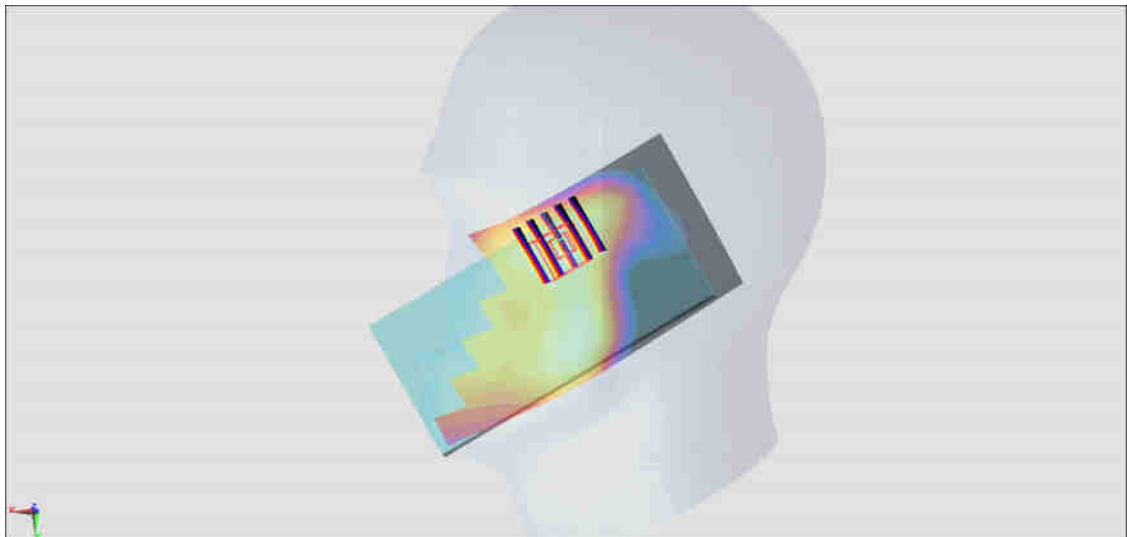
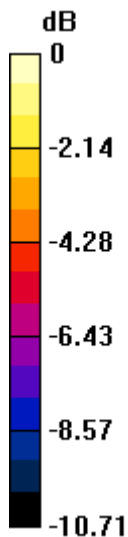
**Zoom Scan (5x5x7)/Cube 0:** Measurement grid: dx=8mm, dy=8mm, dz=5mm

Reference Value = 11.87 V/m; Power Drift = -0.15 dB

Peak SAR (extrapolated) = 0.250 W/kg

**SAR(1 g) = 0.155 W/kg; SAR(10 g) = 0.100 W/kg**

Maximum value of SAR (measured) = 0.213 W/kg



**#07\_LTE Band 5\_10M\_QPSK\_1\_25\_Right Cheek\_Ch20525**

Communication System: LTE; Frequency: 836.5 MHz; Duty Cycle: 1:1

Medium: HSL\_850\_190811 Medium parameters used :  $f = 836.5$  MHz;  $\sigma = 0.894$  S/m;  $\epsilon_r = 41.604$ ;  $\rho = 1000$  kg/m<sup>3</sup>

Ambient Temperature : 23.4 °C ; Liquid Temperature : 22.4 °C

DASY5 Configuration:

- Probe: EX3DV4 - SN3931; ConvF(10.07, 10.07, 10.07) @ 836.5 MHz; Calibrated: 2018/9/27
- Sensor-Surface: 1.4mm (Mechanical Surface Detection)
- Electronics: DAE4 Sn1399; Calibrated: 2018/11/16
- Phantom: SAM\_Right; Type: SAM; Serial: TP:1446
- Measurement SW: DASY52, Version 52.10 (2); SEMCAD X Version 14.6.12 (7470)

**Area Scan (61x121x1):** Interpolated grid: dx=1.500 mm, dy=1.500 mm

Maximum value of SAR (interpolated) = 0.255 W/kg

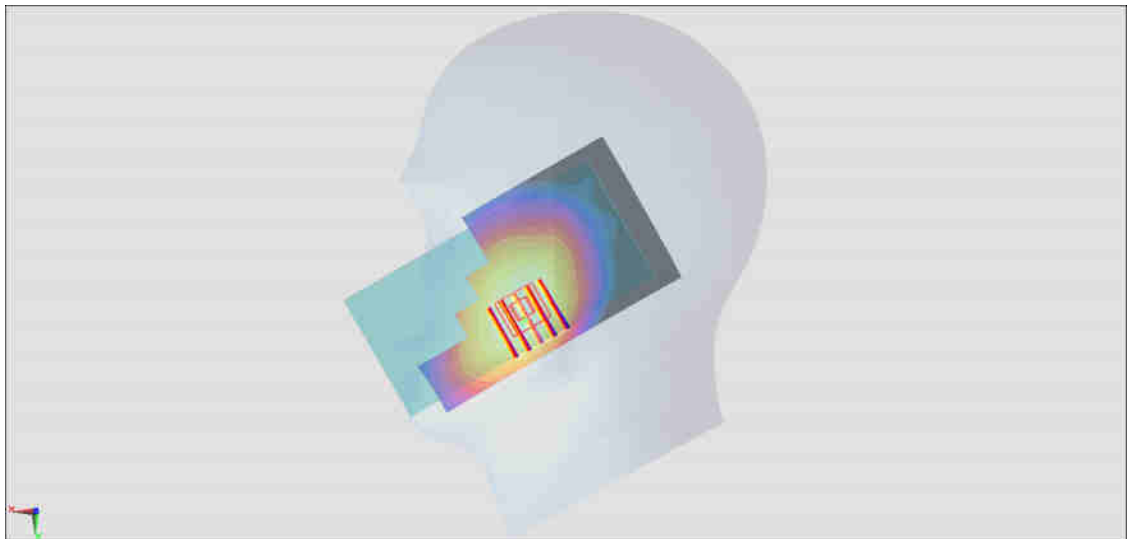
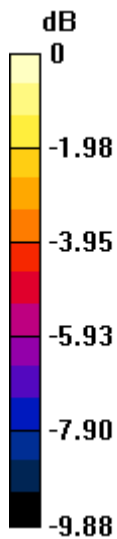
**Zoom Scan (5x5x7)/Cube 0:** Measurement grid: dx=8mm, dy=8mm, dz=5mm

Reference Value = 17.24 V/m; Power Drift = 0.02 dB

Peak SAR (extrapolated) = 0.272 W/kg

**SAR(1 g) = 0.216 W/kg; SAR(10 g) = 0.166 W/kg**

Maximum value of SAR (measured) = 0.253 W/kg



0 dB = 0.253 W/kg = -5.97 dBW/kg

**#08\_LTE Band 7\_20M\_QPSK\_1\_0\_Left Cheek\_Ch21350**

Communication System: LTE; Frequency: 2560 MHz; Duty Cycle: 1:1

Medium: HSL\_2600\_190810 Medium parameters used:  $f = 2560$  MHz;  $\sigma = 1.927$  S/m;  $\epsilon_r = 38.492$ ;  $\rho = 1000$  kg/m<sup>3</sup>

Ambient Temperature : 23.3 °C ; Liquid Temperature : 22.3 °C

DASY5 Configuration:

- Probe: EX3DV4 - SN3931; ConvF(7.3, 7.3, 7.3) @ 2560 MHz; Calibrated: 2018/9/27
- Sensor-Surface: 1.4mm (Mechanical Surface Detection)
- Electronics: DAE4 Sn1399; Calibrated: 2018/11/16
- Phantom: SAM\_Right; Type: SAM; Serial: TP:1446
- Measurement SW: DASY52, Version 52.10 (2); SEMCAD X Version 14.6.12 (7470)

**Area Scan (81x151x1):** Interpolated grid: dx=1.200 mm, dy=1.200 mm

Maximum value of SAR (interpolated) = 0.693 W/kg

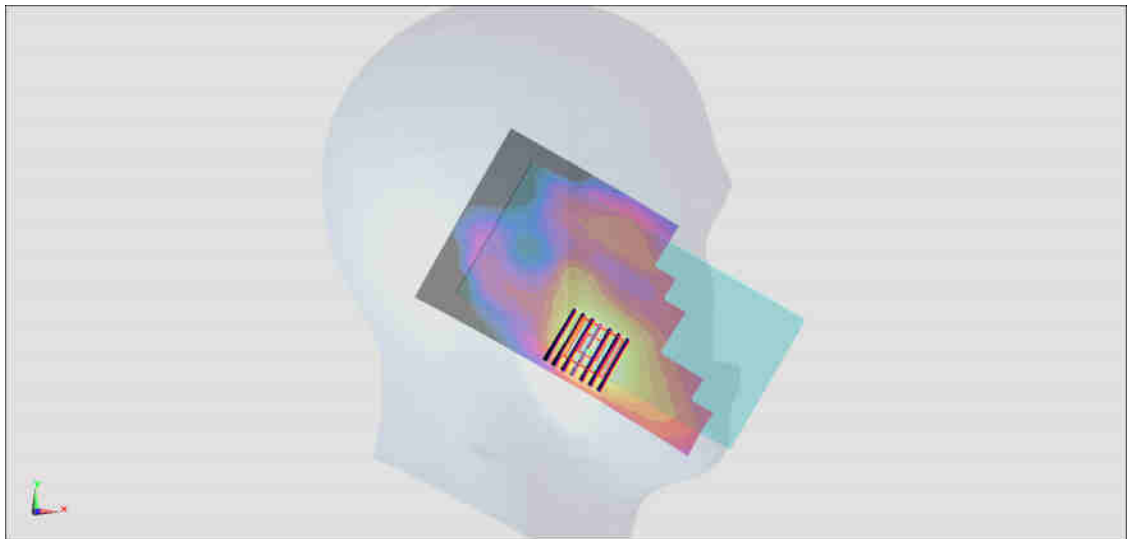
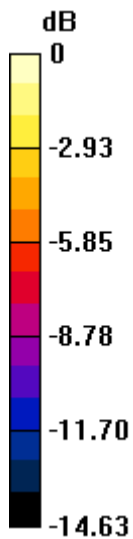
**Zoom Scan (7x7x7)/Cube 0:** Measurement grid: dx=5mm, dy=5mm, dz=5mm

Reference Value = 15.73 V/m; Power Drift = -0.04 dB

Peak SAR (extrapolated) = 0.807 W/kg

**SAR(1 g) = 0.446 W/kg; SAR(10 g) = 0.240 W/kg**

Maximum value of SAR (measured) = 0.669 W/kg



0 dB = 0.669 W/kg = -1.75 dBW/kg

**#09\_LTE Band 12\_10M\_QPSK\_1\_25\_Left Cheek\_Ch23095**

Communication System: LTE; Frequency: 707.5 MHz; Duty Cycle: 1:1

Medium: HSL\_750\_190811 Medium parameters used:  $f = 707.5$  MHz;  $\sigma = 0.852$  S/m;  $\epsilon_r = 43.546$ ;  $\rho = 1000$  kg/m<sup>3</sup>

Ambient Temperature : 23.6 °C; Liquid Temperature : 22.6 °C

DASY5 Configuration:

- Probe: EX3DV4 - SN3931; ConvF(10.54, 10.54, 10.54) @ 707.5 MHz; Calibrated: 2018/9/27
- Sensor-Surface: 1.4mm (Mechanical Surface Detection)
- Electronics: DAE4 Sn1399; Calibrated: 2018/11/16
- Phantom: SAM\_Right; Type: SAM; Serial: TP:1446
- Measurement SW: DASY52, Version 52.10 (2); SEMCAD X Version 14.6.12 (7470)

**Area Scan (61x121x1):** Interpolated grid: dx=1.500 mm, dy=1.500 mm

Maximum value of SAR (interpolated) = 0.0656 W/kg

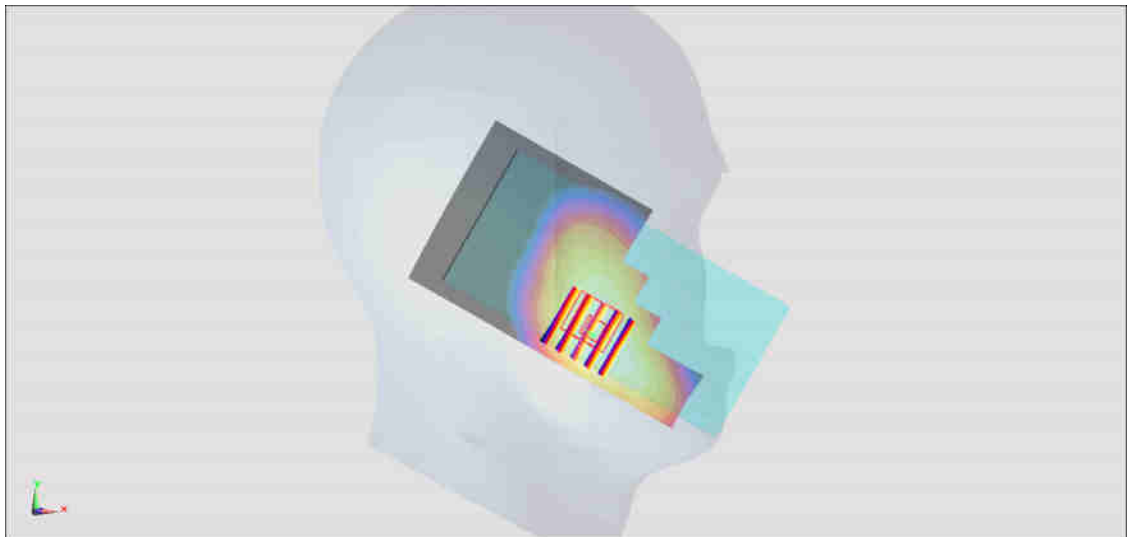
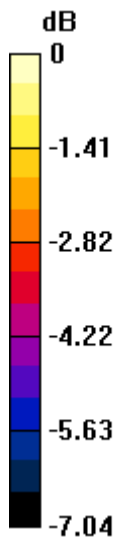
**Zoom Scan (5x5x7)/Cube 0:** Measurement grid: dx=8mm, dy=8mm, dz=5mm

Reference Value = 9.107 V/m; Power Drift = 0.01 dB

Peak SAR (extrapolated) = 0.0680 W/kg

**SAR(1 g) = 0.057 W/kg; SAR(10 g) = 0.046 W/kg**

Maximum value of SAR (measured) = 0.0644 W/kg



0 dB = 0.0644 W/kg = -11.91 dBW/kg

**#10\_LTE Band 66\_20M\_QPSK\_1\_0\_Left Cheek\_Ch132572**

Communication System: LTE ; Frequency: 1770 MHz;Duty Cycle: 1:1

Medium: HSL\_1750\_190810 Medium parameters used:  $f = 1770$  MHz;  $\sigma = 1.389$  S/m;  $\epsilon_r = 41.552$ ;  $\rho = 1000$  kg/m<sup>3</sup>

Ambient Temperature : 23.3 °C ; Liquid Temperature : 22.3 °C

DASY5 Configuration:

- Probe: EX3DV4 - SN3931; ConvF(8.62, 8.62, 8.62) @ 1770 MHz; Calibrated: 2018/9/27
- Sensor-Surface: 1.4mm (Mechanical Surface Detection)
- Electronics: DAE4 Sn1399; Calibrated: 2018/11/16
- Phantom: SAM\_Right; Type: SAM; Serial: TP:1446
- Measurement SW: DASY52, Version 52.10 (2);SEMCAD X Version 14.6.12 (7470)

**Area Scan (61x121x1):** Interpolated grid: dx=1.500 mm, dy=1.500 mm

Maximum value of SAR (interpolated) = 0.313 W/kg

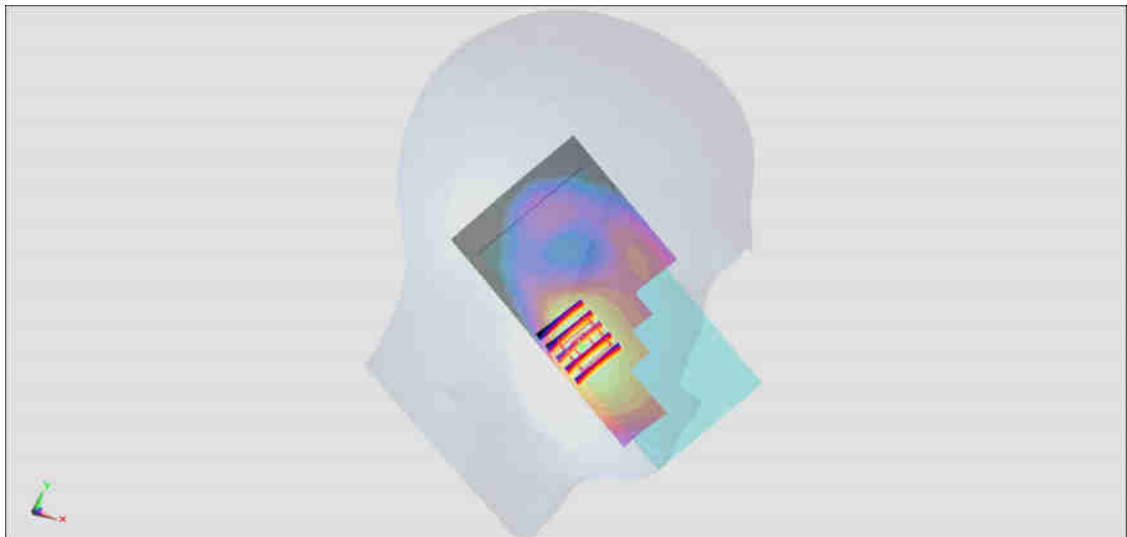
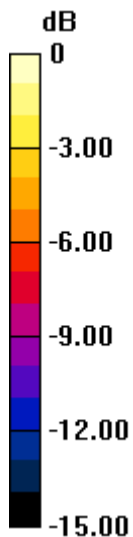
**Zoom Scan (5x5x7)/Cube 0:** Measurement grid: dx=8mm, dy=8mm, dz=5mm

Reference Value = 12.31 V/m; Power Drift = 0.03 dB

Peak SAR (extrapolated) = 0.325 W/kg

**SAR(1 g) = 0.212 W/kg; SAR(10 g) = 0.132 W/kg**

Maximum value of SAR (measured) = 0.287 W/kg



0 dB = 0.287 W/kg = -5.42 dBW/kg

## #11\_WLAN2.4GHz\_802.11b 1Mbps\_Left Cheek\_Ch1

Communication System: 802.11b; Frequency: 2412 MHz; Duty Cycle: 1:1

Medium: HSL\_2450\_190731 Medium parameters used:  $f = 2412$  MHz;  $\sigma = 1.769$  S/m;  $\epsilon_r = 39.768$ ;  $\rho = 1000$  kg/m<sup>3</sup>

Ambient Temperature : 23.5 °C ; Liquid Temperature : 22.5 °C

DASY5 Configuration:

- Probe: EX3DV4 - SN3642; ConvF(7.32, 7.32, 7.32) @ 2412 MHz; Calibrated: 2019/4/29
- Sensor-Surface: 1.4mm (Mechanical Surface Detection)
- Electronics: DAE3 Sn360; Calibrated: 2018/10/29
- Phantom: SAM LEFT; Type: QD000P40CD; Serial: TP:1718
- Measurement SW: DASY52, Version 52.10 (2); SEMCAD X Version 14.6.12 (7470)

**Area Scan (91x61x1):** Interpolated grid: dx=1.200 mm, dy=1.200 mm

Maximum value of SAR (interpolated) = 1.49 W/kg

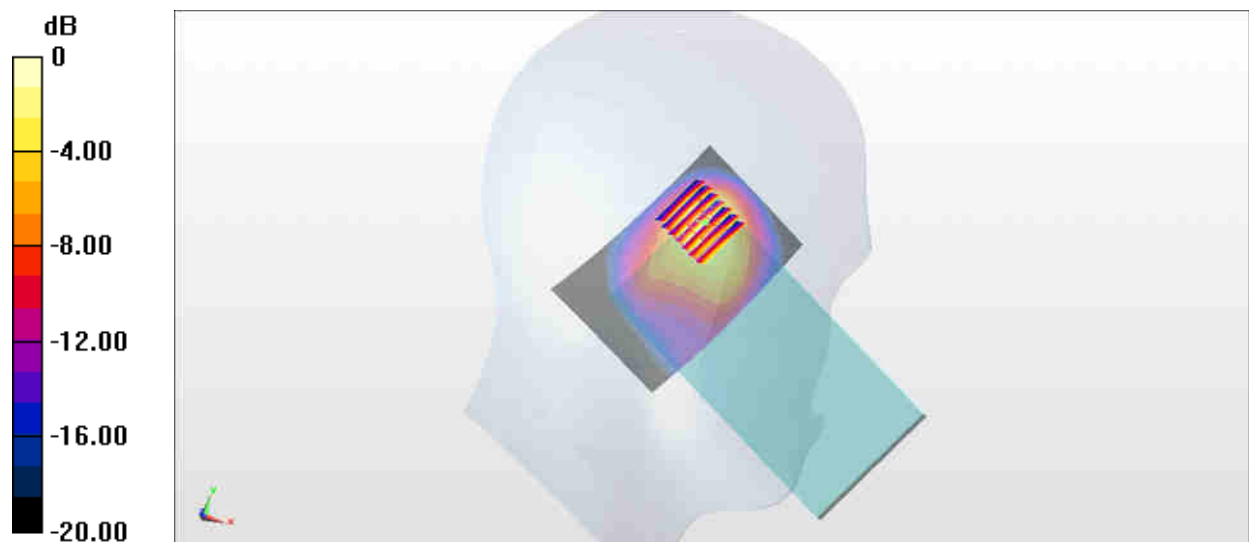
**Zoom Scan (7x7x7)/Cube 0:** Measurement grid: dx=5mm, dy=5mm, dz=5mm

Reference Value = 27.37 V/m; Power Drift = 0.07 dB

Peak SAR (extrapolated) = 1.76 W/kg

**SAR(1 g) = 0.935 W/kg; SAR(10 g) = 0.447 W/kg**

Maximum value of SAR (measured) = 1.42 W/kg



0 dB = 1.49 W/kg = 1.73 dBW/kg

**#12\_WLAN5GHz\_802.11a 6Mbps\_Right Tilted\_Ch64**

Communication System: 802.11a ; Frequency: 5320 MHz;Duty Cycle: 1:1.018

Medium: HSL\_5G\_190808 Medium parameters used:  $f = 5320$  MHz;  $\sigma = 4.795$  S/m;  $\epsilon_r = 36.495$ ;  $\rho = 1000$  kg/m<sup>3</sup>

Ambient Temperature : 23.4 °C ; Liquid Temperature : 22.4 °C

DASY5 Configuration:

- Probe: EX3DV4 - SN3931; ConvF(5.12, 5.12, 5.12) @ 5320 MHz; Calibrated: 2018/9/27
- Sensor-Surface: 1.4mm (Mechanical Surface Detection)
- Electronics: DAE4 Sn1399; Calibrated: 2018/11/16
- Phantom: SAM\_Left; Type: QD000P40CD; Serial: TP:1815
- Measurement SW: DASY52, Version 52.10 (2);SEMCAD X Version 14.6.12 (7470)

**Area Scan (81x81x1):** Interpolated grid: dx=1.000 mm, dy=1.000 mm

Maximum value of SAR (interpolated) = 0.309 W/kg

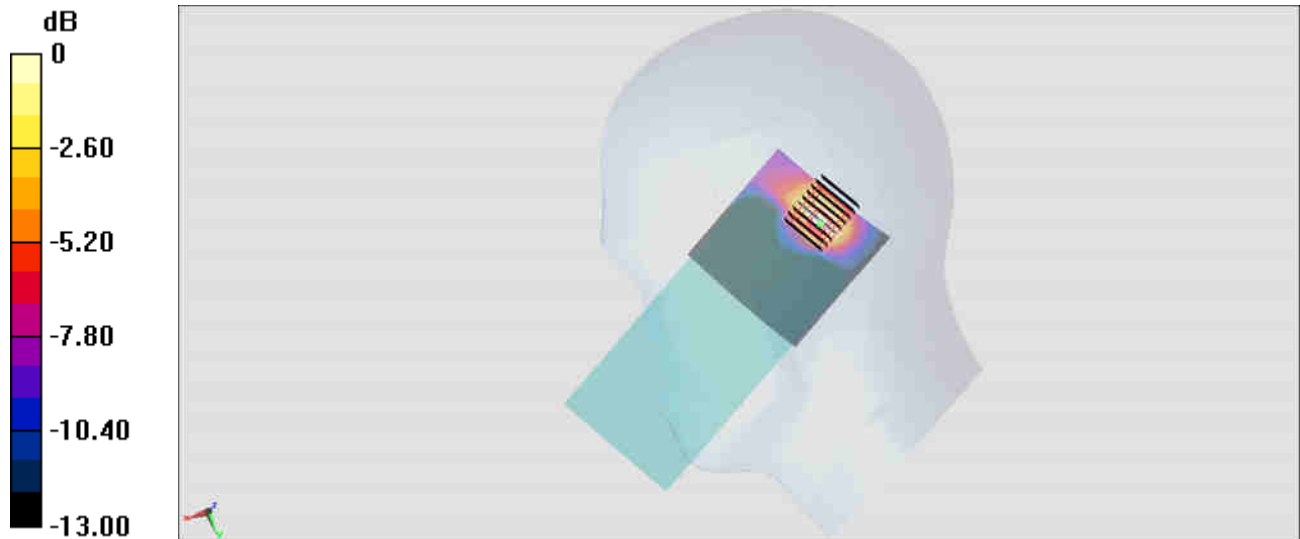
**Zoom Scan (9x8x7)/Cube 0:** Measurement grid: dx=4mm, dy=4mm, dz=1.4mm

Reference Value = 6.933 V/m; Power Drift = -0.11 dB

Peak SAR (extrapolated) = 0.450 W/kg

**SAR(1 g) = 0.132 W/kg; SAR(10 g) = 0.050 W/kg**

Maximum value of SAR (measured) = 0.289 W/kg



**#13\_WLAN5GHz\_802.11a 6Mbps\_Right Tilted\_Ch100**

Communication System: 802.11a ; Frequency: 5500 MHz; Duty Cycle: 1:1.018

Medium: HSL\_5G\_190808 Medium parameters used:  $f = 5500$  MHz;  $\sigma = 4.972$  S/m;  $\epsilon_r = 36.276$ ;  $\rho = 1000$  kg/m<sup>3</sup>

Ambient Temperature : 23.4 °C ; Liquid Temperature : 22.4 °C

DASY5 Configuration:

- Probe: EX3DV4 - SN3931; ConvF(4.47, 4.47, 4.47) @ 5500 MHz; Calibrated: 2018/9/27
- Sensor-Surface: 1.4mm (Mechanical Surface Detection)
- Electronics: DAE4 Sn1399; Calibrated: 2018/11/16
- Phantom: SAM\_Left; Type: QD000P40CD; Serial: TP:1815
- Measurement SW: DASY52, Version 52.10 (2); SEMCAD X Version 14.6.12 (7470)

**Area Scan (81x81x1):** Interpolated grid: dx=1.000 mm, dy=1.000 mm

Maximum value of SAR (interpolated) = 0.302 W/kg

**Zoom Scan (9x8x7)/Cube 0:** Measurement grid: dx=4mm, dy=4mm, dz=1.4mm

Reference Value = 7.146 V/m; Power Drift = -0.12 dB

Peak SAR (extrapolated) = 0.475 W/kg

**SAR(1 g) = 0.129 W/kg; SAR(10 g) = 0.050 W/kg**

Maximum value of SAR (measured) = 0.282 W/kg



0 dB = 0.282 W/kg = -5.50 dBW/kg

**#14\_WLAN5GHz\_802.11a 6Mbps\_Right Tilted\_Ch165**

Communication System: 802.11a ; Frequency: 5825 MHz;Duty Cycle: 1:1.018

Medium: HSL\_5G\_190808 Medium parameters used :  $f = 5825$  MHz;  $\sigma = 5.326$  S/m;  $\epsilon_r = 35.878$ ;  $\rho = 1000$  kg/m<sup>3</sup>

Ambient Temperature : 23.4 °C ; Liquid Temperature : 22.4 °C

DASY5 Configuration:

- Probe: EX3DV4 - SN3931; ConvF(4.72, 4.72, 4.72) @ 5825 MHz; Calibrated: 2018/9/27
- Sensor-Surface: 1.4mm (Mechanical Surface Detection)
- Electronics: DAE4 Sn1399; Calibrated: 2018/11/16
- Phantom: SAM\_Left; Type: QD000P40CD; Serial: TP:1815
- Measurement SW: DASY52, Version 52.10 (2);SEMCAD X Version 14.6.12 (7470)

**Area Scan (81x81x1):** Interpolated grid: dx=1.000 mm, dy=1.000 mm

Maximum value of SAR (interpolated) = 0.429 W/kg

**Zoom Scan (9x8x7)/Cube 0:** Measurement grid: dx=4mm, dy=4mm, dz=1.4mm

Reference Value = 8.538 V/m; Power Drift = -0.00 dB

Peak SAR (extrapolated) = 0.750 W/kg

**SAR(1 g) = 0.186 W/kg; SAR(10 g) = 0.072 W/kg**

Maximum value of SAR (measured) = 0.426 W/kg



0 dB = 0.426 W/kg = -3.71 dBW/kg

## #15\_Bluetooth\_1Mbps\_Left Cheek\_Ch39

Communication System: Bluetooth ; Frequency: 2441 MHz; Duty Cycle: 1:1.289

Medium: HSL\_2450\_190806 Medium parameters used :  $f = 2441$  MHz;  $\sigma = 1.783$  S/m;  $\epsilon_r = 39.896$ ;  $\rho = 1000$  kg/m<sup>3</sup>

Ambient Temperature : 23.8 °C ; Liquid Temperature : 22.8 °C

DASY5 Configuration:

- Probe: EX3DV4 - SN3931; ConvF(7.54, 7.54, 7.54) @ 2441 MHz; Calibrated: 2018/9/27
- Sensor-Surface: 1.4mm (Mechanical Surface Detection)
- Electronics: DAE4 Sn1399; Calibrated: 2018/11/16
- Phantom: SAM\_Right; Type: SAM; Serial: TP:1446
- Measurement SW: DASY52, Version 52.10 (2); SEMCAD X Version 14.6.12 (7470)

**Area Scan (81x81x1):** Interpolated grid: dx=1.200 mm, dy=1.200 mm

Maximum value of SAR (interpolated) = 0.189 W/kg

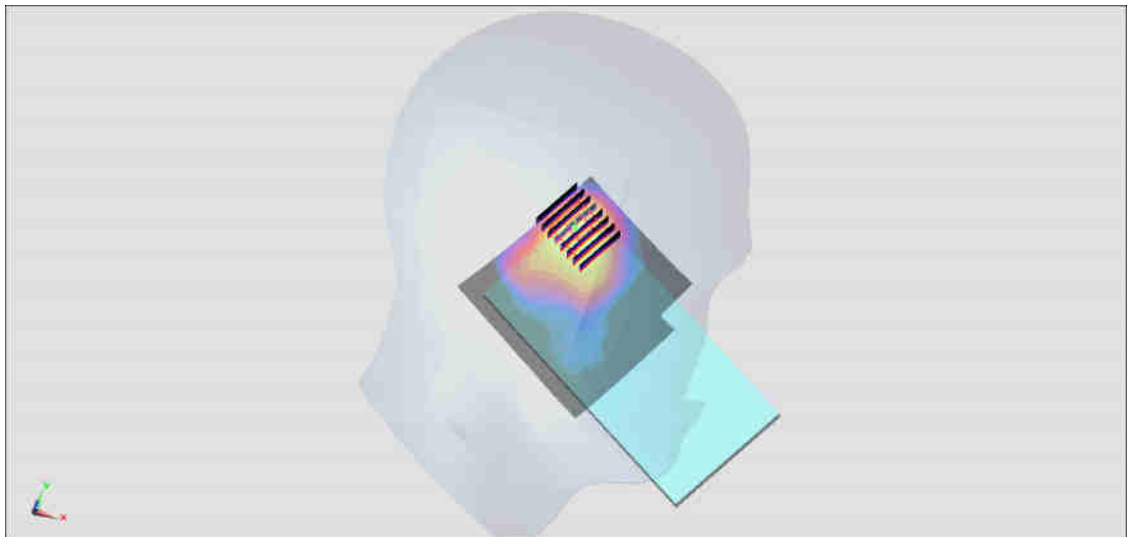
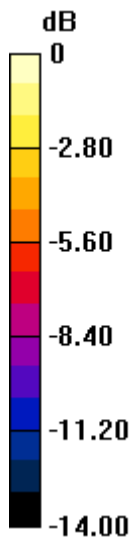
**Zoom Scan (8x7x7)/Cube 0:** Measurement grid: dx=5mm, dy=5mm, dz=5mm

Reference Value = 8.481 V/m; Power Drift = 0.13 dB

Peak SAR (extrapolated) = 0.211 W/kg

**SAR(1 g) = 0.112 W/kg; SAR(10 g) = 0.055 W/kg**

Maximum value of SAR (measured) = 0.169 W/kg



0 dB = 0.169 W/kg = -7.72 dBW/kg

**#16\_GSM850\_GPRS (2 Tx slots)\_Back\_5mm\_Ch128**

Communication System: GSM850; Frequency: 824.2 MHz; Duty Cycle: 1:4.15

Medium: HSL\_850\_190801 Medium parameters used:  $f = 824.2$  MHz;  $\sigma = 0.886$  S/m;  $\epsilon_r = 41.985$ ;  $\rho = 1000$  kg/m<sup>3</sup>

Ambient Temperature : 23.3 °C ; Liquid Temperature : 22.3 °C

DASY5 Configuration:

- Probe: ES3DV3 - SN3169; ConvF(6.42, 6.42, 6.42) @ 824.2 MHz; Calibrated: 2019/5/24
- Sensor-Surface: 3mm (Mechanical Surface Detection)
- Electronics: DAE4 Sn1399; Calibrated: 2018/11/16
- Phantom: SAM\_Right; Type: SAM; Serial: TP:1446
- Measurement SW: DASY52, Version 52.10 (2); SEMCAD X Version 14.6.12 (7470)

**Area Scan (61x51x1):** Interpolated grid: dx=1.500 mm, dy=1.500 mm

Maximum value of SAR (interpolated) = 0.764 W/kg

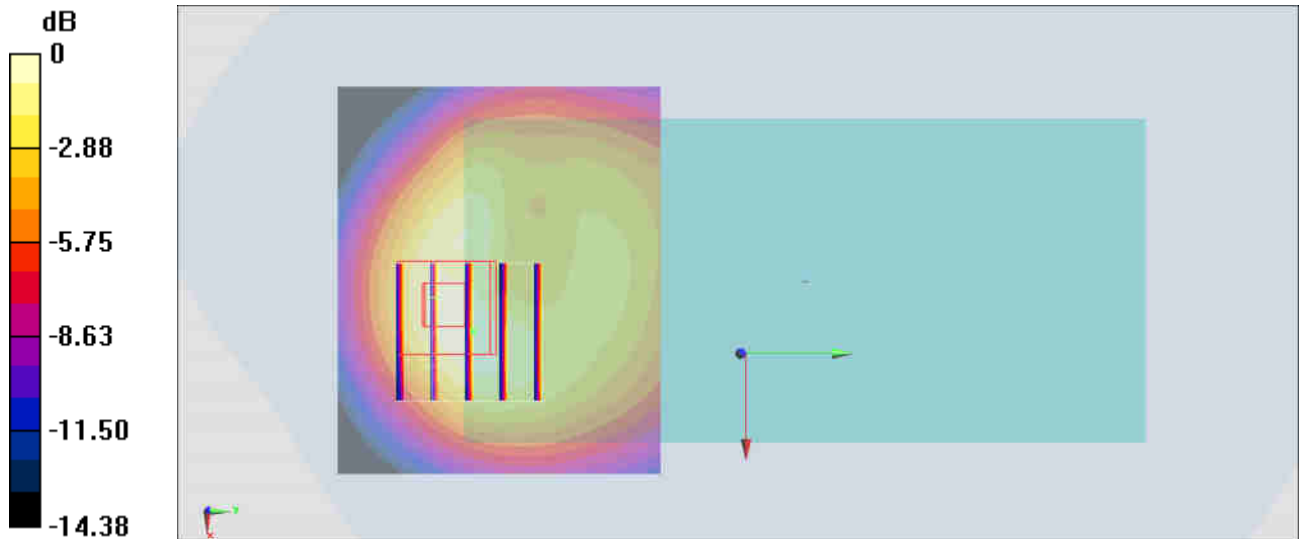
**Zoom Scan (5x5x7)/Cube 0:** Measurement grid: dx=8mm, dy=8mm, dz=5mm

Reference Value = 23.09 V/m; Power Drift = -0.09 dB

Peak SAR (extrapolated) = 1.13 W/kg

**SAR(1 g) = 0.620 W/kg; SAR(10 g) = 0.349 W/kg**

Maximum value of SAR (measured) = 0.762 W/kg



0 dB = 0.762 W/kg = -1.18 dBW/kg

**#17\_GSM1900\_GPRS (2 Tx slots)\_Bottom Side\_5mm\_Ch512**

Communication System: PCS; Frequency: 1850.2 MHz; Duty Cycle: 1:4.15

Medium: HSL\_1900\_190810 Medium parameters used:  $f = 1850.2$  MHz;  $\sigma = 1.376$  S/m;  $\epsilon_r = 41.153$ ;  $\rho = 1000$  kg/m<sup>3</sup>

Ambient Temperature : 23.5 °C ; Liquid Temperature : 22.5 °C

DASY5 Configuration:

- Probe: EX3DV4 - SN3931; ConvF(8.33, 8.33, 8.33) @ 1850.2 MHz; Calibrated: 2018/9/27
- Sensor-Surface: 1.4mm (Mechanical Surface Detection)
- Electronics: DAE4 Sn1399; Calibrated: 2018/11/16
- Phantom: SAM\_Left; Type: QD000P40CD; Serial: TP:1815
- Measurement SW: DASY52, Version 52.10 (2); SEMCAD X Version 14.6.12 (7470)

**Area Scan (31x71x1):** Interpolated grid: dx=1.500 mm, dy=1.500 mm

Maximum value of SAR (interpolated) = 1.69 W/kg

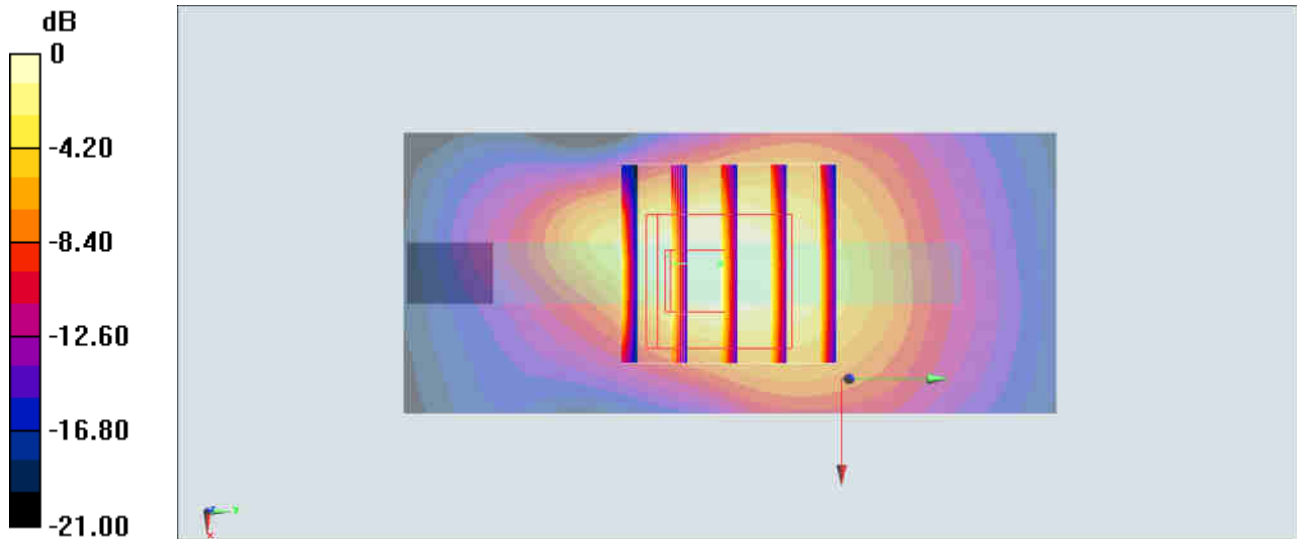
**Zoom Scan (5x5x7)/Cube 0:** Measurement grid: dx=8mm, dy=8mm, dz=5mm

Reference Value = 34.03 V/m; Power Drift = 0.04 dB

Peak SAR (extrapolated) = 2.36 W/kg

**SAR(1 g) = 1.19 W/kg; SAR(10 g) = 0.583 W/kg**

Maximum value of SAR (measured) = 1.38 W/kg



0 dB = 1.38 W/kg = 1.40 dBW/kg

**#18\_WCDMA II\_RMC 12.2Kbps\_Bottom Side\_5mm\_Ch9262**

Communication System: WCDMA; Frequency: 1852.4 MHz; Duty Cycle: 1:1

Medium: HSL\_1900\_190803 Medium parameters used:  $f = 1852.4$  MHz;  $\sigma = 1.366$  S/m;  $\epsilon_r = 38.729$ ;  $\rho = 1000$  kg/m<sup>3</sup>

Ambient Temperature : 23.6 °C ; Liquid Temperature : 22.6 °C

DASY5 Configuration:

- Probe: ES3DV3 - SN3169; ConvF(5.14, 5.14, 5.14) @ 1852.4 MHz; Calibrated: 2019/5/24
- Sensor-Surface: 3mm (Mechanical Surface Detection)
- Electronics: DAE4 Sn1399; Calibrated: 2018/11/16
- Phantom: SAM\_Left; Type: QD000P40CD; Serial: TP:1815
- Measurement SW: DASY52, Version 52.10 (2); SEMCAD X Version 14.6.12 (7470)

**Area Scan (31x61x1):** Interpolated grid: dx=1.500 mm, dy=1.500 mm

Maximum value of SAR (interpolated) = 1.62 W/kg

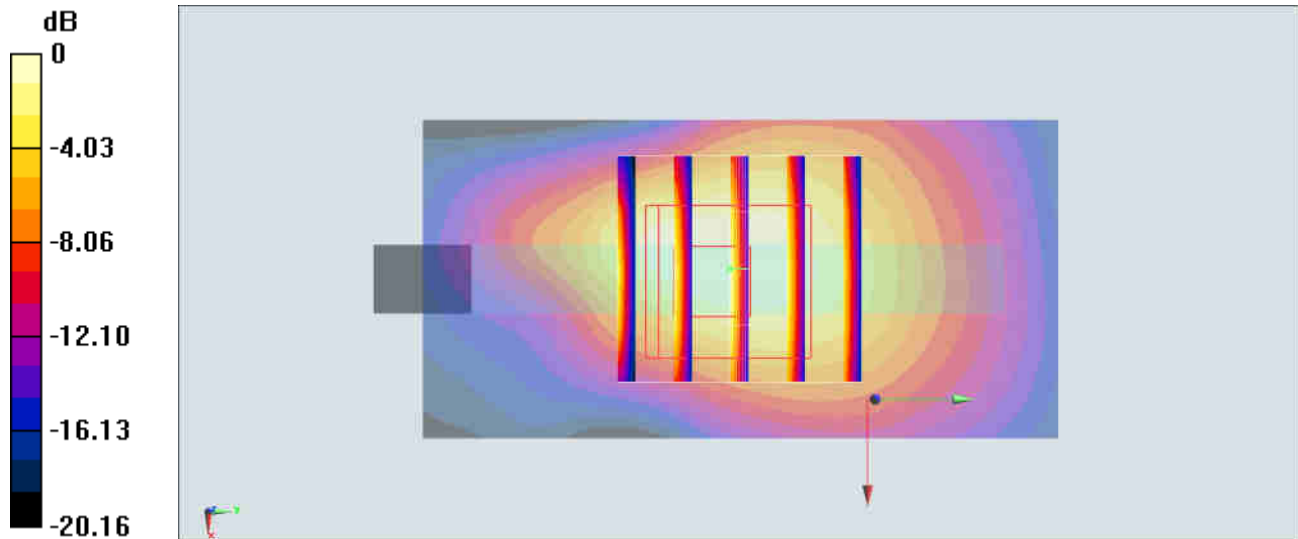
**Zoom Scan (5x5x7)/Cube 0:** Measurement grid: dx=8mm, dy=8mm, dz=5mm

Reference Value = 23.32 V/m; Power Drift = -0.05 dB

Peak SAR (extrapolated) = 2.34 W/kg

**SAR(1 g) = 1.19 W/kg; SAR(10 g) = 0.590 W/kg**

Maximum value of SAR (measured) = 1.48 W/kg



0 dB = 1.48 W/kg = 1.70 dBW/kg

**#19\_WCDMA IV\_RMC 12.2Kbps\_Bottom Side\_5mm\_Ch1513**

Communication System: WCDMA; Frequency: 1752.6 MHz; Duty Cycle: 1:1

Medium: HSL\_1750\_190802 Medium parameters used:  $f = 1753$  MHz;  $\sigma = 1.39$  S/m;  $\epsilon_r = 40.081$ ;  $\rho = 1000$  kg/m<sup>3</sup>

Ambient Temperature : 23.7 °C; Liquid Temperature : 22.7 °C

DASY5 Configuration:

- Probe: ES3DV3 - SN3169; ConvF(5.34, 5.34, 5.34) @ 1752.6 MHz; Calibrated: 2019/5/24
- Sensor-Surface: 3mm (Mechanical Surface Detection)
- Electronics: DAE4 Sn1399; Calibrated: 2018/11/16
- Phantom: SAM\_Left; Type: QD000P40CD; Serial: TP:1815
- Measurement SW: DASY52, Version 52.10 (2); SEMCAD X Version 14.6.12 (7470)

**Area Scan (31x61x1):** Interpolated grid: dx=1.500 mm, dy=1.500 mm

Maximum value of SAR (interpolated) = 1.46 W/kg

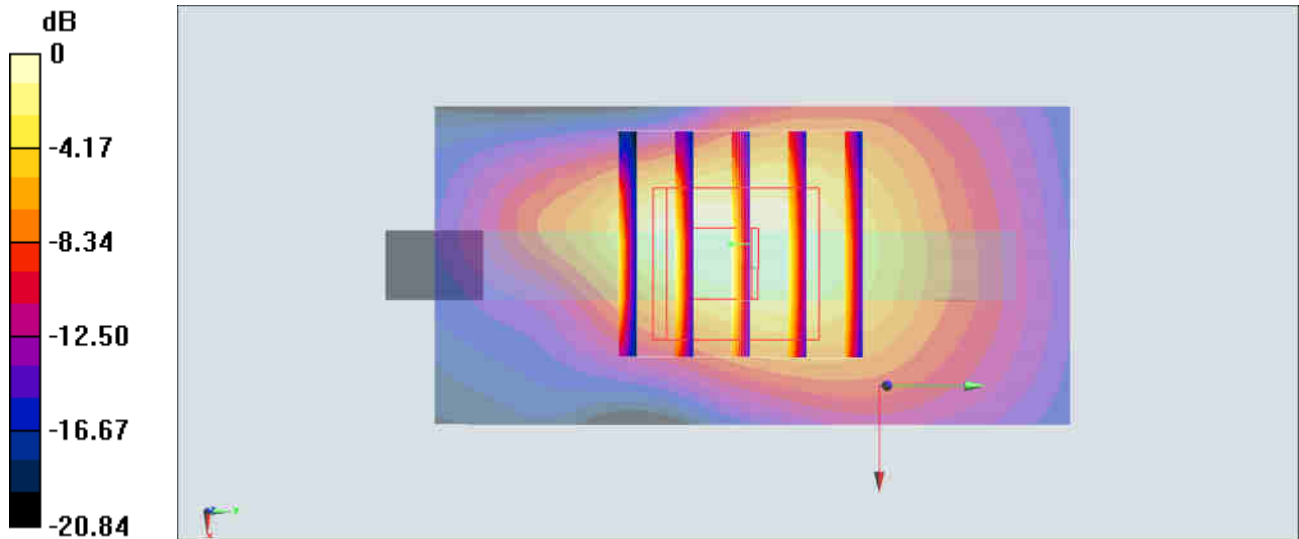
**Zoom Scan (5x5x7)/Cube 0:** Measurement grid: dx=8mm, dy=8mm, dz=5mm

Reference Value = 19.17 V/m; Power Drift = -0.02 dB

Peak SAR (extrapolated) = 2.20 W/kg

**SAR(1 g) = 1.15 W/kg; SAR(10 g) = 0.536 W/kg**

Maximum value of SAR (measured) = 1.31 W/kg



**#20\_WCDMA V\_RMC 12.2Kbps\_Back\_5mm\_Ch4233**

Communication System: WCDMA; Frequency: 846.6 MHz; Duty Cycle: 1:1

Medium: HSL\_850\_190801 Medium parameters used:  $f = 847$  MHz;  $\sigma = 0.904$  S/m;  $\epsilon_r = 41.706$ ;  $\rho = 1000$  kg/m<sup>3</sup>

Ambient Temperature : 23.3 °C ; Liquid Temperature : 22.3 °C

DASY5 Configuration:

- Probe: ES3DV3 - SN3169; ConvF(6.42, 6.42, 6.42) @ 846.6 MHz; Calibrated: 2019/5/24
- Sensor-Surface: 3mm (Mechanical Surface Detection)
- Electronics: DAE4 Sn1399; Calibrated: 2018/11/16
- Phantom: SAM\_Right; Type: SAM; Serial: TP:1446
- Measurement SW: DASY52, Version 52.10 (2); SEMCAD X Version 14.6.12 (7470)

**Area Scan (61x71x1):** Interpolated grid: dx=1.500 mm, dy=1.500 mm

Maximum value of SAR (interpolated) = 1.37 W/kg

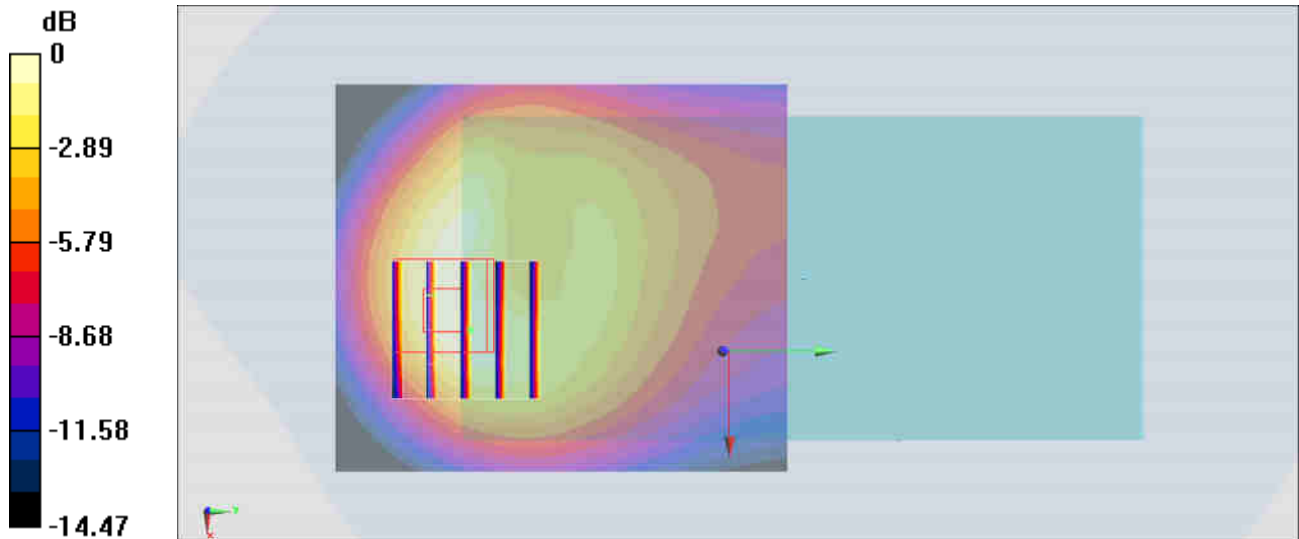
**Zoom Scan (5x5x7)/Cube 0:** Measurement grid: dx=8mm, dy=8mm, dz=5mm

Reference Value = 28.26 V/m; Power Drift = -0.03 dB

Peak SAR (extrapolated) = 1.99 W/kg

**SAR(1 g) = 1.09 W/kg; SAR(10 g) = 0.610 W/kg**

Maximum value of SAR (measured) = 1.33 W/kg



0 dB = 1.33 W/kg = 1.24 dBW/kg

**#21\_LTE Band 2\_20M\_QPSK\_50\_0\_Back\_5mm\_Ch18700**

Communication System: LTE; Frequency: 1860 MHz; Duty Cycle: 1:1

Medium: HSL\_1900\_190803 Medium parameters used:  $f = 1860$  MHz;  $\sigma = 1.374$  S/m;  $\epsilon_r = 38.703$ ;  $\rho = 1000$  kg/m<sup>3</sup>

Ambient Temperature : 23.6 °C; Liquid Temperature : 22.6 °C

DASY5 Configuration:

- Probe: ES3DV3 - SN3169; ConvF(5.14, 5.14, 5.14) @ 1860 MHz; Calibrated: 2019/5/24
- Sensor-Surface: 3mm (Mechanical Surface Detection)
- Electronics: DAE4 Sn1399; Calibrated: 2018/11/16
- Phantom: SAM\_Left; Type: QD000P40CD; Serial: TP:1815
- Measurement SW: DASY52, Version 52.10 (2); SEMCAD X Version 14.6.12 (7470)

**Area Scan (61x61x1):** Interpolated grid: dx=1.500 mm, dy=1.500 mm

Maximum value of SAR (interpolated) = 1.76 W/kg

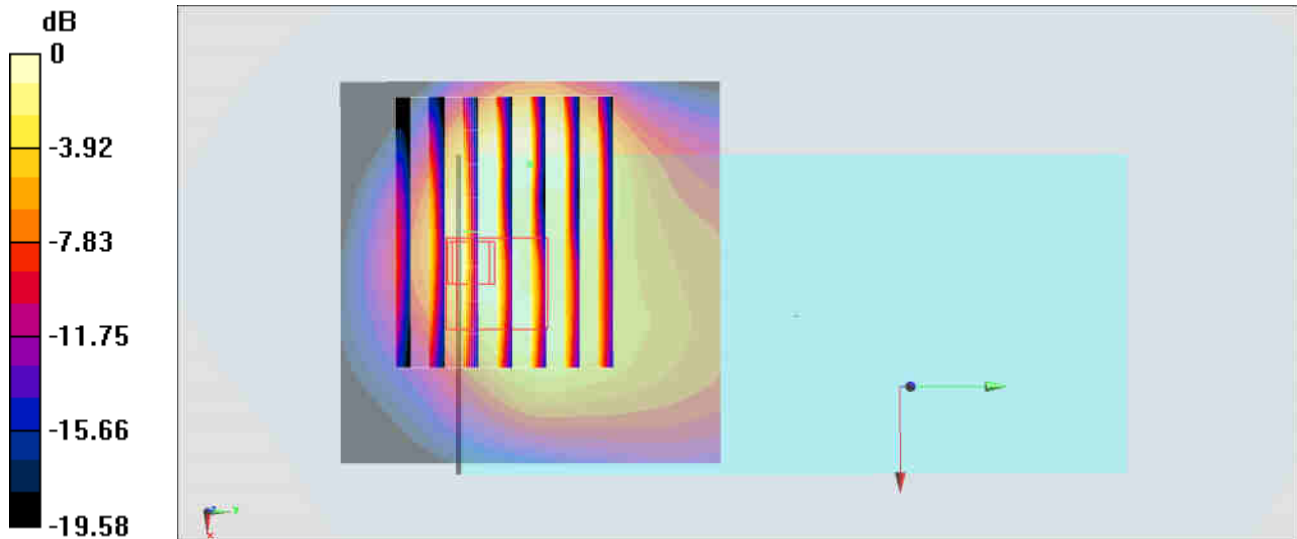
**Zoom Scan (9x7x7)/Cube 0:** Measurement grid: dx=8mm, dy=8mm, dz=5mm

Reference Value = 23.03 V/m; Power Drift = -0.04 dB

Peak SAR (extrapolated) = 2.33 W/kg

**SAR(1 g) = 1.13 W/kg; SAR(10 g) = 0.655 W/kg**

Maximum value of SAR (measured) = 1.46 W/kg



0 dB = 1.46 W/kg = 1.64 dBW/kg

**#22\_LTE Band 5\_10M\_QPSK\_1\_25\_Back\_5mm\_Ch20525**

Communication System: LTE; Frequency: 836.5 MHz; Duty Cycle: 1:1

Medium: HSL\_850\_190801 Medium parameters used:  $f = 836.5$  MHz;  $\sigma = 0.896$  S/m;  $\epsilon_r = 41.822$ ;  $\rho = 1000$  kg/m<sup>3</sup>

Ambient Temperature : 23.3 °C ; Liquid Temperature : 22.3 °C

DASY5 Configuration:

- Probe: ES3DV3 - SN3169; ConvF(6.42, 6.42, 6.42) @ 836.5 MHz; Calibrated: 2019/5/24
- Sensor-Surface: 3mm (Mechanical Surface Detection)
- Electronics: DAE4 Sn1399; Calibrated: 2018/11/16
- Phantom: SAM\_Right; Type: SAM; Serial: TP:1446
- Measurement SW: DASY52, Version 52.10 (2); SEMCAD X Version 14.6.12 (7470)

**Area Scan (61x61x1):** Interpolated grid: dx=1.500 mm, dy=1.500 mm

Maximum value of SAR (interpolated) = 1.33 W/kg

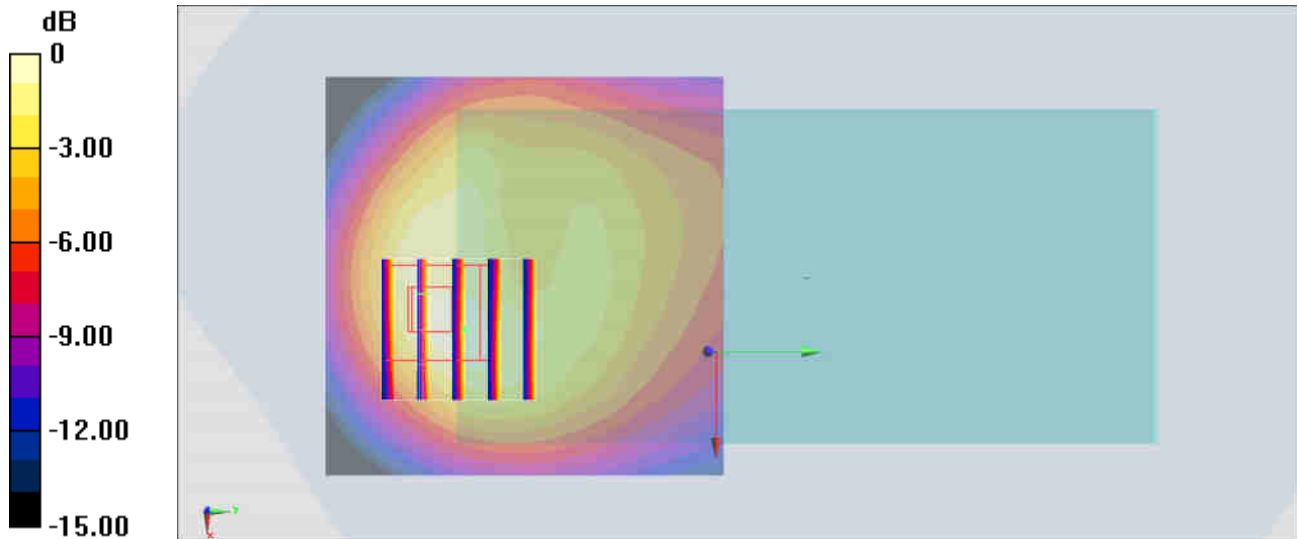
**Zoom Scan (5x5x7)/Cube 0:** Measurement grid: dx=8mm, dy=8mm, dz=5mm

Reference Value = 27.35 V/m; Power Drift = -0.01 dB

Peak SAR (extrapolated) = 1.88 W/kg

**SAR(1 g) = 1.04 W/kg; SAR(10 g) = 0.584 W/kg**

Maximum value of SAR (measured) = 1.30 W/kg



0 dB = 1.33 W/kg = 1.24 dBW/kg

**#23\_LTE Band 7\_20M\_QPSK\_1\_0\_Back\_5mm\_Ch21350**

Communication System: LTE; Frequency: 2560 MHz; Duty Cycle: 1:1

Medium: HSL\_2600\_190805 Medium parameters used:  $f = 2560$  MHz;  $\sigma = 1.921$  S/m;  $\epsilon_r = 38.844$ ;  $\rho = 1000$  kg/m<sup>3</sup>

Ambient Temperature : 23.6 °C ; Liquid Temperature : 22.6 °C

DASY5 Configuration:

- Probe: ES3DV3 - SN3169; ConvF(4.38, 4.38, 4.38) @ 2560 MHz; Calibrated: 2019/5/24
- Sensor-Surface: 3mm (Mechanical Surface Detection)
- Electronics: DAE4 Sn1399; Calibrated: 2018/11/16
- Phantom: SAM\_Right; Type: SAM; Serial: TP:1446
- Measurement SW: DASY52, Version 52.10 (2); SEMCAD X Version 14.6.12 (7470)

**Area Scan (91x61x1):** Interpolated grid: dx=1.200 mm, dy=1.200 mm

Maximum value of SAR (interpolated) = 1.63 W/kg

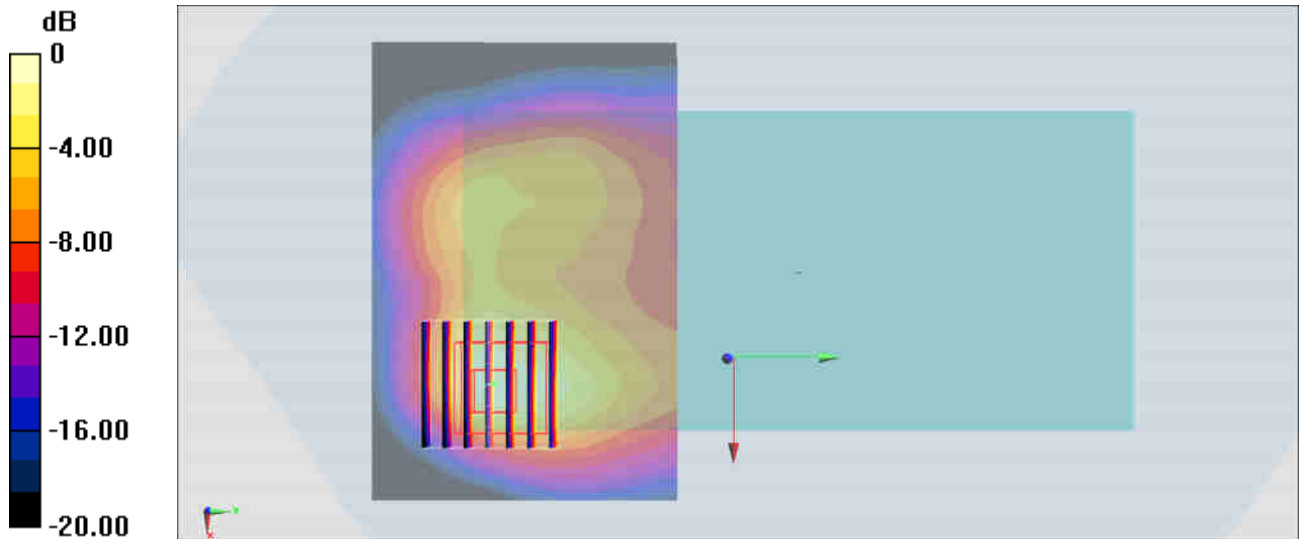
**Zoom Scan (7x7x7)/Cube 0:** Measurement grid: dx=5mm, dy=5mm, dz=5mm

Reference Value = 21.45 V/m; Power Drift = -0.06 dB

Peak SAR (extrapolated) = 2.69 W/kg

**SAR(1 g) = 1.1 W/kg; SAR(10 g) = 0.484 W/kg**

Maximum value of SAR (measured) = 1.46 W/kg



0 dB = 1.46 W/kg = 1.64 dBW/kg

**#24\_LTE Band 12\_10M\_QPSK\_1\_25\_Back\_5mm\_Ch23095**

Communication System: LTE; Frequency: 707.5 MHz; Duty Cycle: 1:1

Medium: HSL\_750\_190731 Medium parameters used:  $f = 707.5$  MHz;  $\sigma = 0.854$  S/m;  $\epsilon_r = 41.05$ ;  $\rho = 1000$  kg/m<sup>3</sup>

Ambient Temperature : 23.6 °C ; Liquid Temperature : 22.6 °C

DASY5 Configuration:

- Probe: ES3DV3 - SN3169; ConvF(6.68, 6.68, 6.68) @ 707.5 MHz; Calibrated: 2019/5/24
- Sensor-Surface: 3mm (Mechanical Surface Detection)
- Electronics: DAE4 Sn1399; Calibrated: 2018/11/16
- Phantom: SAM\_Right; Type: SAM; Serial: TP:1446
- Measurement SW: DASY52, Version 52.10 (2); SEMCAD X Version 14.6.12 (7470)

**Area Scan (71x51x1):** Interpolated grid: dx=1.500 mm, dy=1.500 mm

Maximum value of SAR (interpolated) = 0.822 W/kg

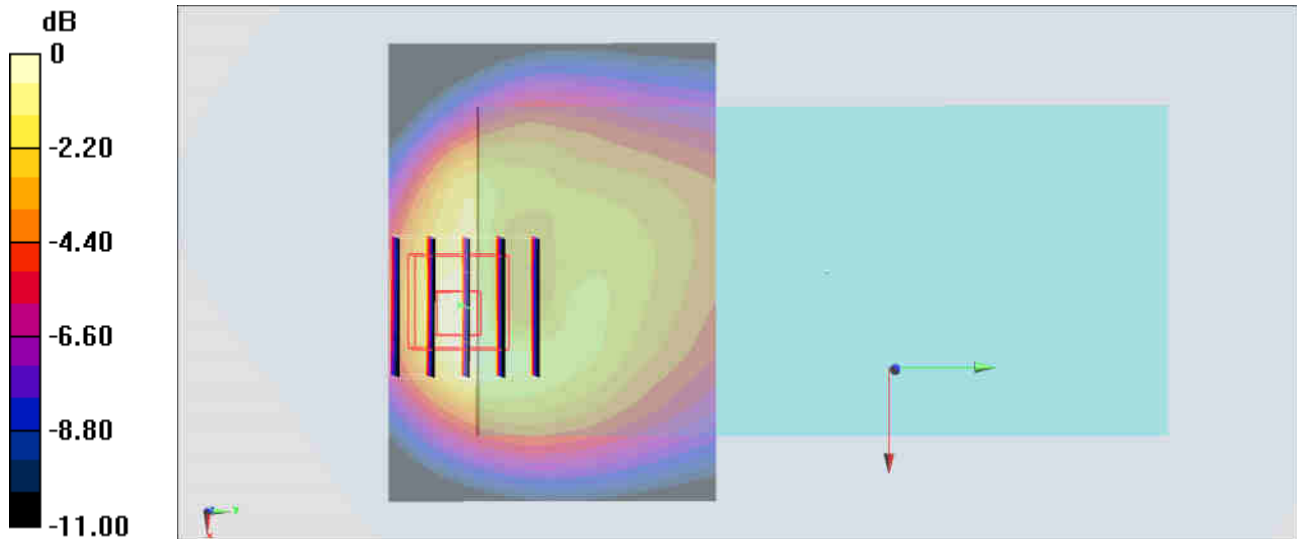
**Zoom Scan (5x5x7)/Cube 0:** Measurement grid: dx=8mm, dy=8mm, dz=5mm

Reference Value = 28.37 V/m; Power Drift = -0.05 dB

Peak SAR (extrapolated) = 1.24 W/kg

**SAR(1 g) = 0.644 W/kg; SAR(10 g) = 0.355 W/kg**

Maximum value of SAR (measured) = 0.840 W/kg



0 dB = 0.840 W/kg = -0.76 dBW/kg

**#25\_LTE Band 66\_20M\_QPSK\_1\_0\_Back\_5mm\_Ch132322**

Communication System: LTE; Frequency: 1745 MHz; Duty Cycle: 1:1

Medium: HSL\_1750\_190802 Medium parameters used:  $f = 1745$  MHz;  $\sigma = 1.386$  S/m;  $\epsilon_r = 40.094$ ;  $\rho = 1000$  kg/m<sup>3</sup>

Ambient Temperature : 23.7 °C ; Liquid Temperature : 22.7 °C

DASY5 Configuration:

- Probe: ES3DV3 - SN3169; ConvF(5.34, 5.34, 5.34) @ 1745 MHz; Calibrated: 2019/5/24
- Sensor-Surface: 3mm (Mechanical Surface Detection)
- Electronics: DAE4 Sn1399; Calibrated: 2018/11/16
- Phantom: SAM\_Left; Type: QD000P40CD; Serial: TP:1815
- Measurement SW: DASY52, Version 52.10 (2); SEMCAD X Version 14.6.12 (7470)

**Area Scan (61x61x1):** Interpolated grid: dx=1.500 mm, dy=1.500 mm

Maximum value of SAR (interpolated) = 1.34 W/kg

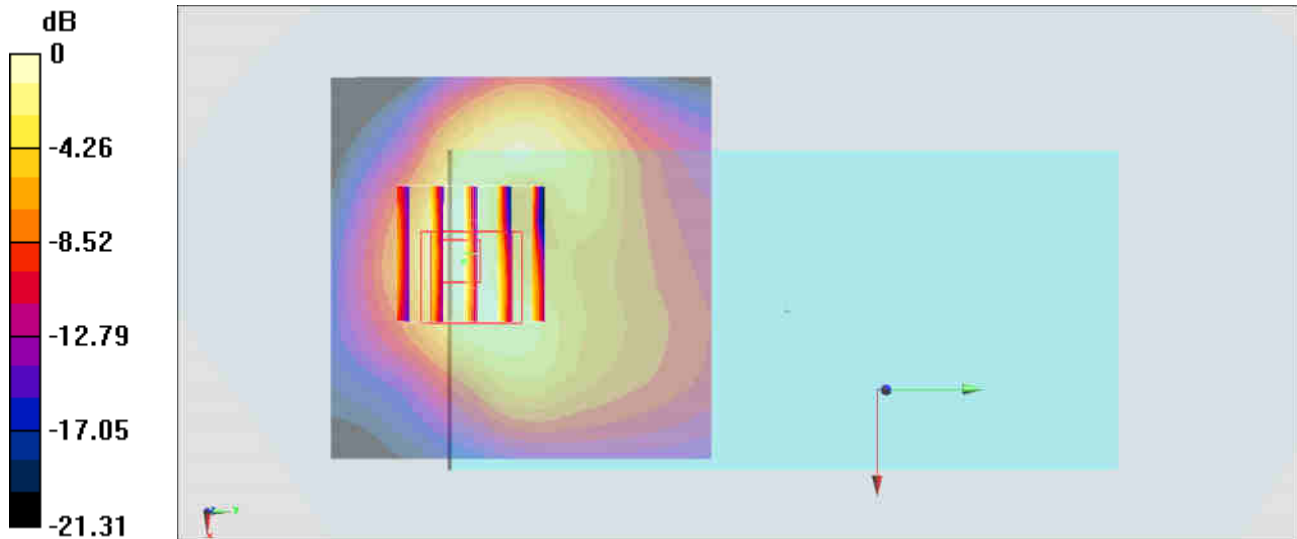
**Zoom Scan (5x5x7)/Cube 0:** Measurement grid: dx=8mm, dy=8mm, dz=5mm

Reference Value = 20.98 V/m; Power Drift = 0.11 dB

Peak SAR (extrapolated) = 1.78 W/kg

**SAR(1 g) = 1.08 W/kg; SAR(10 g) = 0.556 W/kg**

Maximum value of SAR (measured) = 1.29 W/kg



0 dB = 1.29 W/kg = 1.11 dBW/kg

**#26\_WLAN2.4GHz\_802.11b 1Mbps\_Back\_5mm\_Ch6**

Communication System: 802.11b; Frequency: 2437 MHz; Duty Cycle: 1:1

Medium: HSL\_2450\_190806 Medium parameters used:  $f = 2437$  MHz;  $\sigma = 1.778$  S/m;  $\epsilon_r = 39.909$ ;  $\rho = 1000$  kg/m<sup>3</sup>

Ambient Temperature : 23.8 °C; Liquid Temperature : 22.8 °C

DASY5 Configuration:

- Probe: EX3DV4 - SN3931; ConvF(7.54, 7.54, 7.54) @ 2437 MHz; Calibrated: 2018/9/27
- Sensor-Surface: 1.4mm (Mechanical Surface Detection)
- Electronics: DAE4 Sn1399; Calibrated: 2018/11/16
- Phantom: SAM\_Right; Type: SAM; Serial: TP:1446
- Measurement SW: DASY52, Version 52.10 (2); SEMCAD X Version 14.6.12 (7470)

**Area Scan (71x71x1):** Interpolated grid: dx=1.200 mm, dy=1.200 mm

Maximum value of SAR (interpolated) = 0.955 W/kg

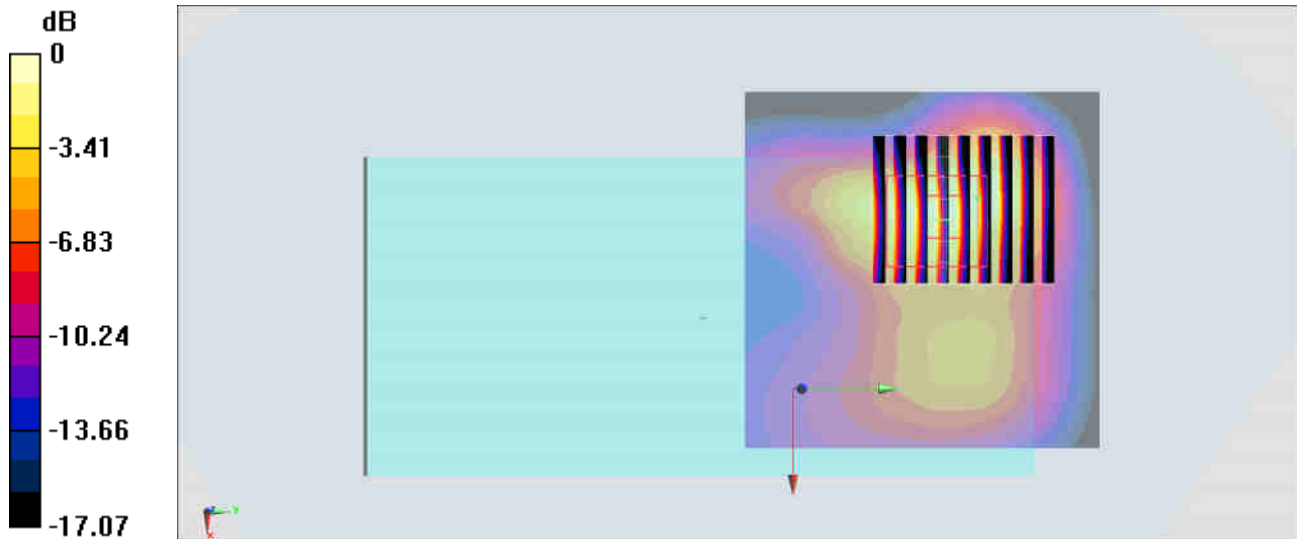
**Zoom Scan (8x9x7)/Cube 0:** Measurement grid: dx=5mm, dy=5mm, dz=5mm

Reference Value = 23.15 V/m; Power Drift = -0.01 dB

Peak SAR (extrapolated) = 1.49 W/kg

**SAR(1 g) = 0.720 W/kg; SAR(10 g) = 0.321 W/kg**

Maximum value of SAR (measured) = 1.19 W/kg



0 dB = 1.19 W/kg = 0.76 dBW/kg

## #27\_WLAN5GHz\_802.11a 6Mbps\_Back\_5mm\_Ch40

Communication System: 802.11a; Frequency: 5200 MHz; Duty Cycle: 1:1.018

Medium: HSL\_5G\_190814 Medium parameters used:  $f = 5200$  MHz;  $\sigma = 4.499$  S/m;  $\epsilon_r = 37.35$ ;  $\rho = 1000$  kg/m<sup>3</sup>

Ambient Temperature : 23.3 °C ; Liquid Temperature : 22.3 °C

DASY5 Configuration:

- Probe: EX3DV4 - SN3931; ConvF(5.12, 5.12, 5.12) @ 5200 MHz; Calibrated: 2018/9/27
- Sensor-Surface: 1.4mm (Mechanical Surface Detection)
- Electronics: DAE4 Sn1399; Calibrated: 2018/11/16
- Phantom: SAM\_Right; Type: SAM; Serial: TP:1446
- Measurement SW: DASY52, Version 52.10 (2); SEMCAD X Version 14.6.12 (7450)

**Area Scan (81x71x1):** Interpolated grid: dx=1.000 mm, dy=1.000 mm

Maximum value of SAR (interpolated) = 1.97 W/kg

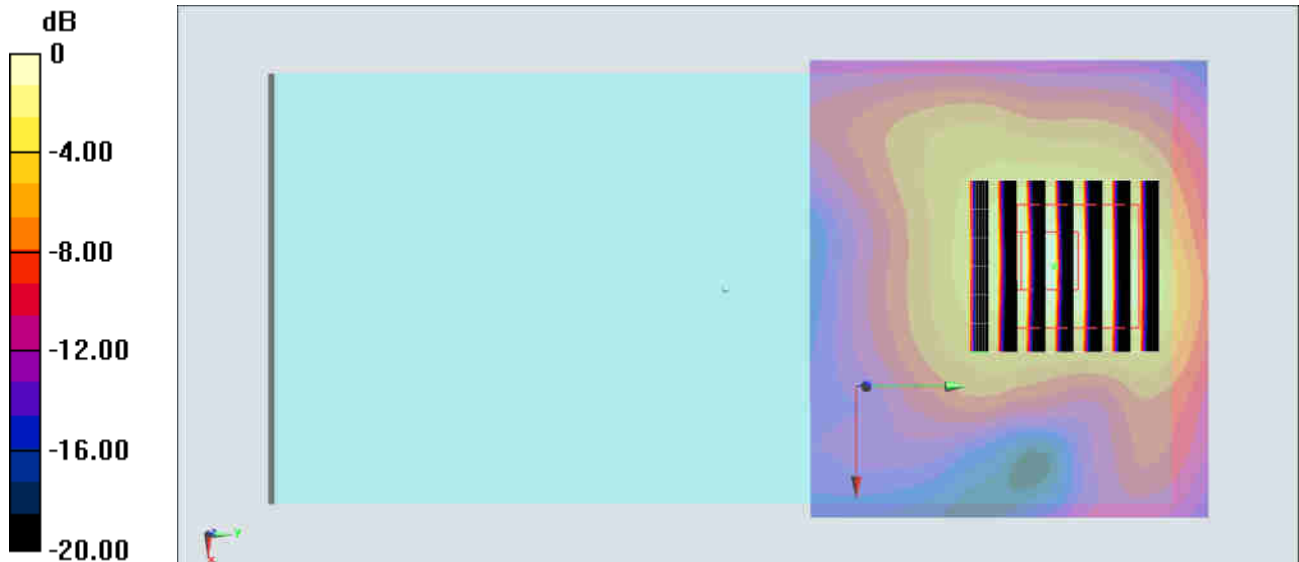
**Zoom Scan (7x7x7)/Cube 0:** Measurement grid: dx=4mm, dy=4mm, dz=1.4mm

Reference Value = 23.00 V/m; Power Drift = 0.02 dB

Peak SAR (extrapolated) = 3.53 W/kg

**SAR(1 g) = 0.908 W/kg; SAR(10 g) = 0.321 W/kg**

Maximum value of SAR (measured) = 2.14 W/kg



0 dB = 2.14 W/kg = 3.30 dBW/kg

## #28\_WLAN5GHz\_802.11n-HT40 MCS0\_Back\_5mm\_Ch159

Communication System: 802.11n; Frequency: 5795 MHz; Duty Cycle: 1:1.038

Medium: HSL\_5G\_190814 Medium parameters used :  $f = 5795$  MHz;  $\sigma = 5.135$  S/m;  $\epsilon_r = 36.536$ ;  $\rho = 1000$  kg/m<sup>3</sup>

Ambient Temperature : 23.3 °C ; Liquid Temperature : 22.3 °C

DASY5 Configuration:

- Probe: EX3DV4 - SN3931; ConvF(4.72, 4.72, 4.72) @ 5795 MHz; Calibrated: 2018/9/27
- Sensor-Surface: 1.4mm (Mechanical Surface Detection)
- Electronics: DAE4 Sn1399; Calibrated: 2018/11/16
- Phantom: SAM\_Right; Type: SAM; Serial: TP:1446
- Measurement SW: DASY52, Version 52.10 (2); SEMCAD X Version 14.6.12 (7450)

**Area Scan (81x71x1):** Interpolated grid: dx=1.000 mm, dy=1.000 mm

Maximum value of SAR (interpolated) = 1.81 W/kg

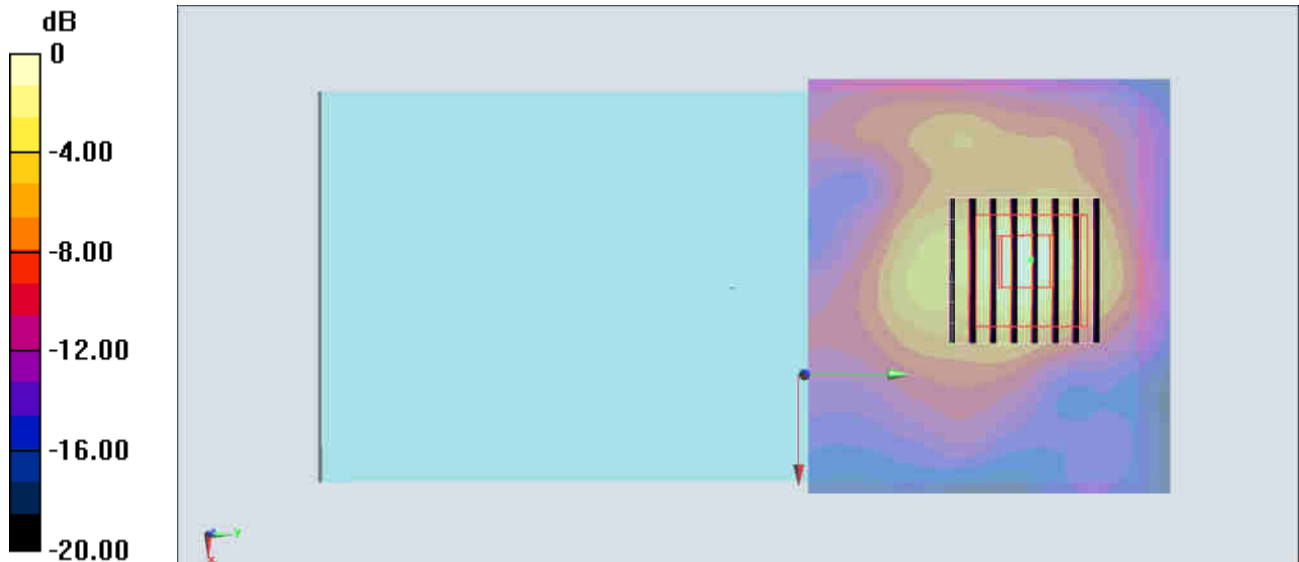
**Zoom Scan (8x8x7)/Cube 0:** Measurement grid: dx=4mm, dy=4mm, dz=1.4mm

Reference Value = 19.20 V/m; Power Drift = 0.15 dB

Peak SAR (extrapolated) = 3.50 W/kg

**SAR(1 g) = 0.868 W/kg; SAR(10 g) = 0.242 W/kg**

Maximum value of SAR (measured) = 1.96 W/kg



0 dB = 1.96 W/kg = 2.92 dBW/kg

## #29\_Bluetooth\_1Mbps\_Back\_5mm\_Ch39

Communication System: Bluetooth; Frequency: 2441 MHz; Duty Cycle: 1:1.289

Medium: HSL\_2450\_190806 Medium parameters used:  $f = 2441$  MHz;  $\sigma = 1.783$  S/m;  $\epsilon_r = 39.896$ ;  $\rho = 1000$  kg/m<sup>3</sup>

Ambient Temperature : 23.8 °C; Liquid Temperature : 22.8 °C

DASY5 Configuration:

- Probe: EX3DV4 - SN3931; ConvF(7.54, 7.54, 7.54) @ 2441 MHz; Calibrated: 2018/9/27
- Sensor-Surface: 1.4mm (Mechanical Surface Detection)
- Electronics: DAE4 Sn1399; Calibrated: 2018/11/16
- Phantom: SAM\_Right; Type: SAM; Serial: TP:1446
- Measurement SW: DASY52, Version 52.10 (2); SEMCAD X Version 14.6.12 (7470)

**Area Scan (71x71x1):** Interpolated grid: dx=1.200 mm, dy=1.200 mm

Maximum value of SAR (interpolated) = 0.139 W/kg

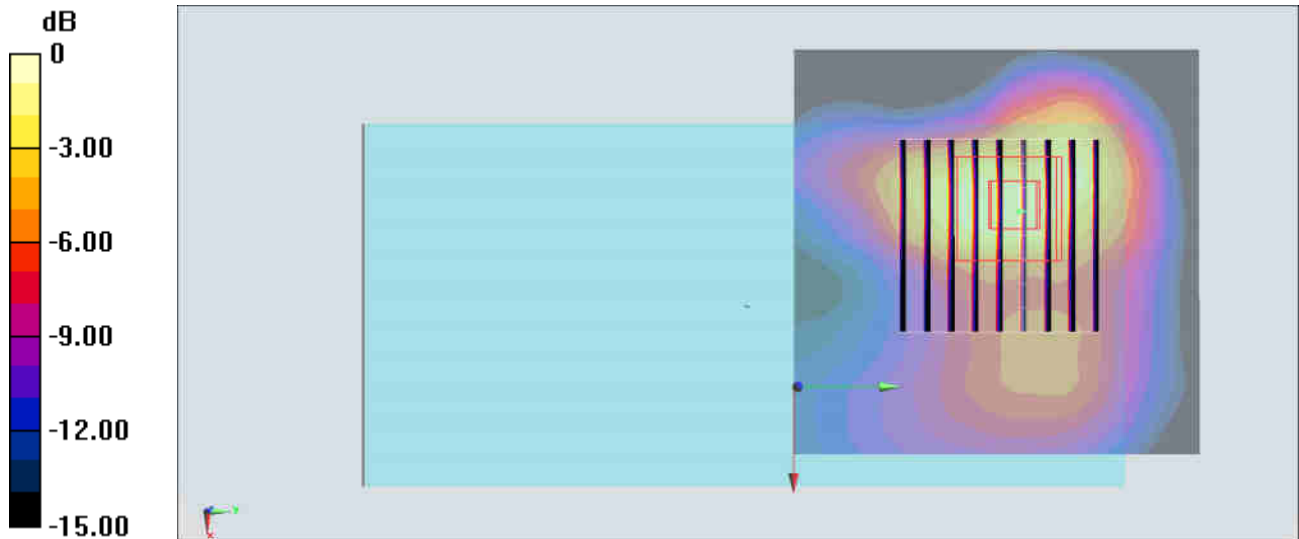
**Zoom Scan (9x9x7)/Cube 0:** Measurement grid: dx=5mm, dy=5mm, dz=5mm

Reference Value = 9.474 V/m; Power Drift = -0.02 dB

Peak SAR (extrapolated) = 0.234 W/kg

**SAR(1 g) = 0.112 W/kg; SAR(10 g) = 0.050 W/kg**

Maximum value of SAR (measured) = 0.178 W/kg



0 dB = 0.178 W/kg = -7.50 dBW/kg

**#30\_GSM850\_GPRS (2 Tx slots)\_Back\_5mm\_Ch128**

Communication System: GSM850; Frequency: 824.2 MHz; Duty Cycle: 1:4.15

Medium: HSL\_850\_190801 Medium parameters used :  $f = 824.2$  MHz;  $\sigma = 0.886$  S/m;  $\epsilon_r = 41.985$ ;  $\rho = 1000$  kg/m<sup>3</sup>

Ambient Temperature : 23.3 °C ; Liquid Temperature : 22.3 °C

DASY5 Configuration:

- Probe: ES3DV3 - SN3169; ConvF(6.42, 6.42, 6.42) @ 824.2 MHz; Calibrated: 2019/5/24
- Sensor-Surface: 3mm (Mechanical Surface Detection)
- Electronics: DAE4 Sn1399; Calibrated: 2018/11/16
- Phantom: SAM\_Right; Type: SAM; Serial: TP:1446
- Measurement SW: DASY52, Version 52.10 (2); SEMCAD X Version 14.6.12 (7470)

**Area Scan (61x51x1):** Interpolated grid: dx=1.500 mm, dy=1.500 mm

Maximum value of SAR (interpolated) = 0.764 W/kg

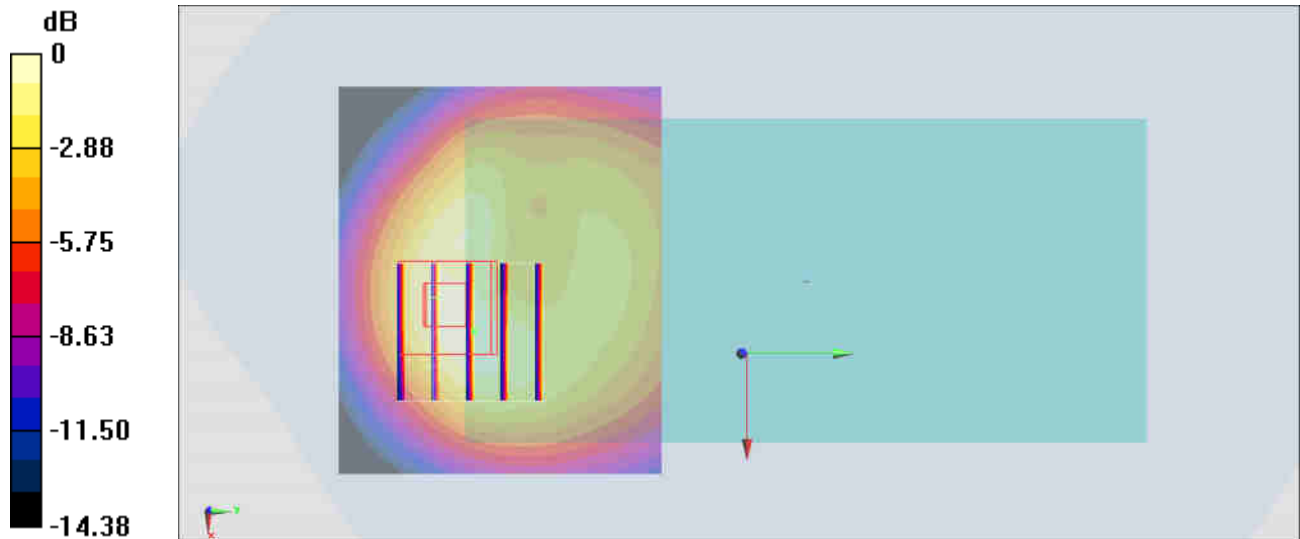
**Zoom Scan (5x5x7)/Cube 0:** Measurement grid: dx=8mm, dy=8mm, dz=5mm

Reference Value = 23.09 V/m; Power Drift = -0.09 dB

Peak SAR (extrapolated) = 1.13 W/kg

**SAR(1 g) = 0.620 W/kg; SAR(10 g) = 0.349 W/kg**

Maximum value of SAR (measured) = 0.762 W/kg



0 dB = 0.762 W/kg = -1.18 dBW/kg

**#31\_GSM1900\_GPRS (2 Tx slots)\_Back\_5mm\_Ch512**

Communication System: PCS; Frequency: 1850.2 MHz; Duty Cycle: 1:4.15

Medium: HSL\_1900\_190810 Medium parameters used:  $f = 1850.2$  MHz;  $\sigma = 1.376$  S/m;  $\epsilon_r = 41.153$ ;  $\rho = 1000$  kg/m<sup>3</sup>

Ambient Temperature : 23.5 °C ; Liquid Temperature : 22.5 °C

DASY5 Configuration:

- Probe: EX3DV4 - SN3931; ConvF(8.33, 8.33, 8.33) @ 1850.2 MHz; Calibrated: 2018/9/27
- Sensor-Surface: 1.4mm (Mechanical Surface Detection)
- Electronics: DAE4 Sn1399; Calibrated: 2018/11/16
- Phantom: SAM\_Left; Type: QD000P40CD; Serial: TP:1815
- Measurement SW: DASY52, Version 52.10 (2); SEMCAD X Version 14.6.12 (7470)

**Area Scan (61x61x1):** Interpolated grid: dx=1.500 mm, dy=1.500 mm

Maximum value of SAR (interpolated) = 2.11 W/kg

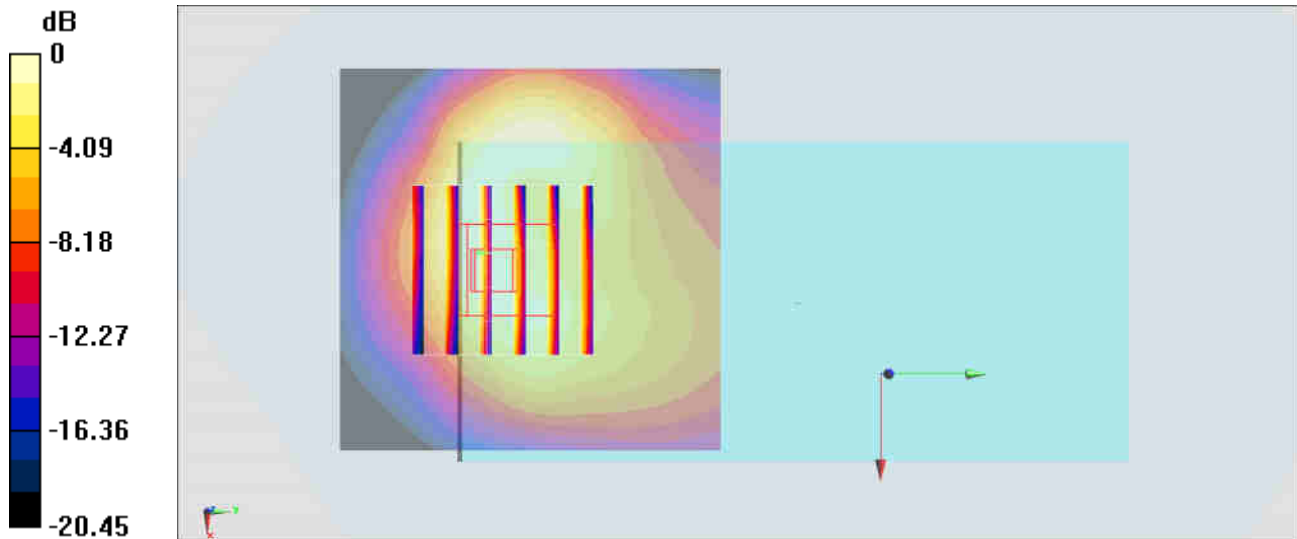
**Zoom Scan (6x6x7)/Cube 0:** Measurement grid: dx=8mm, dy=8mm, dz=5mm

Reference Value = 29.43 V/m; Power Drift = 0.01 dB

Peak SAR (extrapolated) = 2.20 W/kg

**SAR(1 g) = 1.16 W/kg; SAR(10 g) = 0.702 W/kg**

Maximum value of SAR (measured) = 1.84 W/kg



0 dB = 1.84 W/kg = 2.65 dBW/kg

**#32\_WCDMA II\_RMC 12.2Kbps\_Back\_5mm\_Ch9538**

Communication System: WCDMA; Frequency: 1907.6 MHz; Duty Cycle: 1:1

Medium: HSL\_1900\_190803 Medium parameters used:  $f = 1908$  MHz;  $\sigma = 1.422$  S/m;  $\epsilon_r = 38.465$ ;  $\rho = 1000$  kg/m<sup>3</sup>

Ambient Temperature : 23.6 °C ; Liquid Temperature : 22.6 °C

DASY5 Configuration:

- Probe: ES3DV3 - SN3169; ConvF(5.14, 5.14, 5.14) @ 1907.6 MHz; Calibrated: 2019/5/24
- Sensor-Surface: 3mm (Mechanical Surface Detection)
- Electronics: DAE4 Sn1399; Calibrated: 2018/11/16
- Phantom: SAM\_Left; Type: QD000P40CD; Serial: TP:1815
- Measurement SW: DASY52, Version 52.10 (2); SEMCAD X Version 14.6.12 (7470)

**Area Scan (61x61x1):** Interpolated grid: dx=1.500 mm, dy=1.500 mm

Maximum value of SAR (interpolated) = 1.70 W/kg

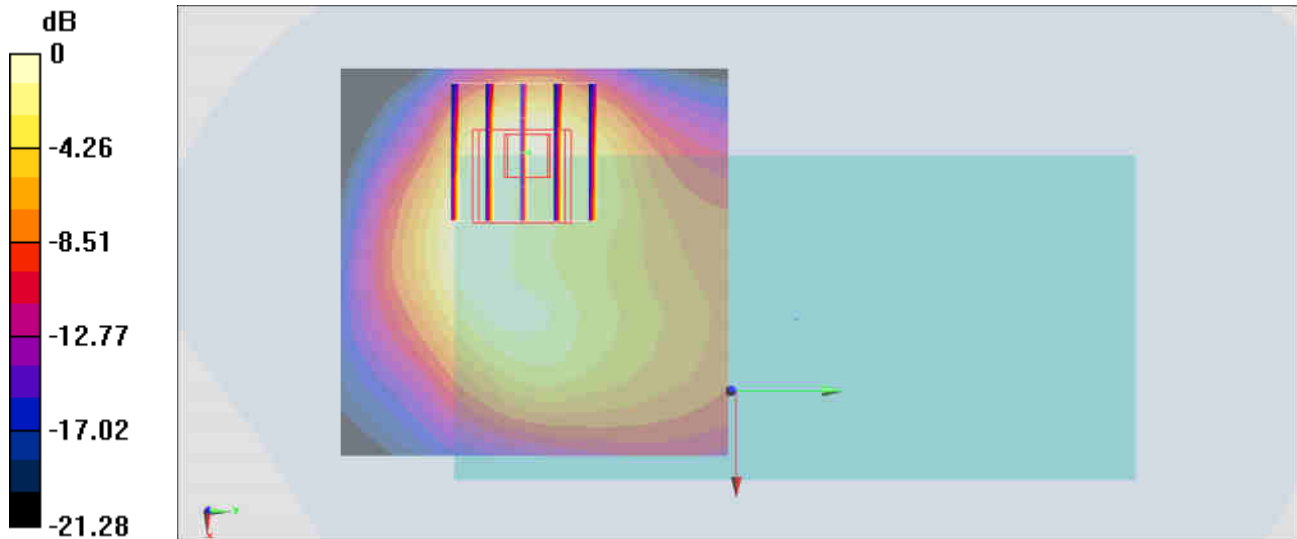
**Zoom Scan (5x5x7)/Cube 0:** Measurement grid: dx=8mm, dy=8mm, dz=5mm

Reference Value = 25.45 V/m; Power Drift = -0.01 dB

Peak SAR (extrapolated) = 2.44 W/kg

**SAR(1 g) = 1.09 W/kg; SAR(10 g) = 0.551 W/kg**

Maximum value of SAR (measured) = 1.49 W/kg



**#33\_WCDMA IV\_RMC 12.2Kbps\_Back\_5mm\_Ch1513**

Communication System: WCDMA; Frequency: 1752.6 MHz; Duty Cycle: 1:1

Medium: HSL\_1750\_190802 Medium parameters used:  $f = 1753$  MHz;  $\sigma = 1.39$  S/m;  $\epsilon_r = 40.081$ ;  $\rho = 1000$  kg/m<sup>3</sup>

Ambient Temperature : 23.7 °C ; Liquid Temperature : 22.7 °C

DASY5 Configuration:

- Probe: ES3DV3 - SN3169; ConvF(5.34, 5.34, 5.34) @ 1752.6 MHz; Calibrated: 2019/5/24
- Sensor-Surface: 3mm (Mechanical Surface Detection)
- Electronics: DAE4 Sn1399; Calibrated: 2018/11/16
- Phantom: SAM\_Left; Type: QD000P40CD; Serial: TP:1815
- Measurement SW: DASY52, Version 52.10 (2); SEMCAD X Version 14.6.12 (7470)

**Area Scan (61x61x1):** Interpolated grid: dx=1.500 mm, dy=1.500 mm

Maximum value of SAR (interpolated) = 1.47 W/kg

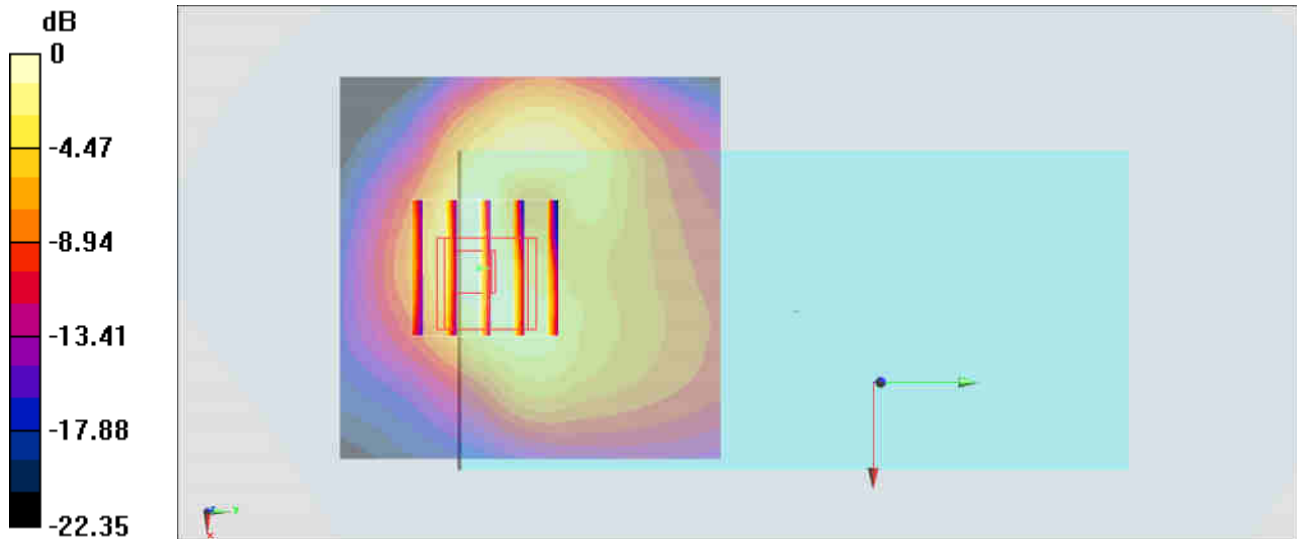
**Zoom Scan (5x5x7)/Cube 0:** Measurement grid: dx=8mm, dy=8mm, dz=5mm

Reference Value = 20.92 V/m; Power Drift = -0.03 dB

Peak SAR (extrapolated) = 1.98 W/kg

**SAR(1 g) = 1.14 W/kg; SAR(10 g) = 0.619 W/kg**

Maximum value of SAR (measured) = 1.41 W/kg



0 dB = 1.41 W/kg = 1.49 dBW/kg

**#34\_WCDMA V\_RMC 12.2Kbps\_Back\_5mm\_Ch4233**

Communication System: WCDMA; Frequency: 846.6 MHz; Duty Cycle: 1:1

Medium: HSL\_850\_190801 Medium parameters used:  $f = 847$  MHz;  $\sigma = 0.904$  S/m;  $\epsilon_r = 41.706$ ;  $\rho = 1000$  kg/m<sup>3</sup>

Ambient Temperature : 23.3 °C ; Liquid Temperature : 22.3 °C

DASY5 Configuration:

- Probe: ES3DV3 - SN3169; ConvF(6.42, 6.42, 6.42) @ 846.6 MHz; Calibrated: 2019/5/24
- Sensor-Surface: 3mm (Mechanical Surface Detection)
- Electronics: DAE4 Sn1399; Calibrated: 2018/11/16
- Phantom: SAM\_Right; Type: SAM; Serial: TP:1446
- Measurement SW: DASY52, Version 52.10 (2); SEMCAD X Version 14.6.12 (7470)

**Area Scan (61x71x1):** Interpolated grid: dx=1.500 mm, dy=1.500 mm

Maximum value of SAR (interpolated) = 1.37 W/kg

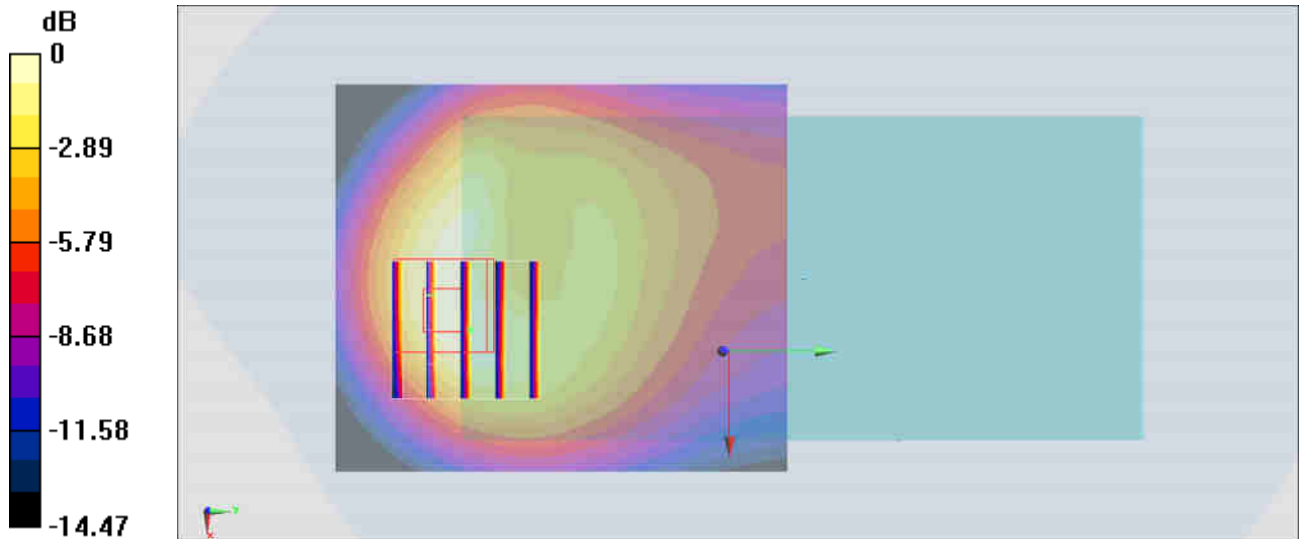
**Zoom Scan (5x5x7)/Cube 0:** Measurement grid: dx=8mm, dy=8mm, dz=5mm

Reference Value = 28.26 V/m; Power Drift = -0.03 dB

Peak SAR (extrapolated) = 1.99 W/kg

**SAR(1 g) = 1.09 W/kg; SAR(10 g) = 0.610 W/kg**

Maximum value of SAR (measured) = 1.33 W/kg



0 dB = 1.33 W/kg = 1.24 dBW/kg

**#35\_LTE Band 2\_20M\_QPSK\_50\_0\_Back\_5mm\_Ch18700**

Communication System: LTE; Frequency: 1860 MHz; Duty Cycle: 1:1

Medium: HSL\_1900\_190803 Medium parameters used:  $f = 1860$  MHz;  $\sigma = 1.374$  S/m;  $\epsilon_r = 38.703$ ;  $\rho = 1000$  kg/m<sup>3</sup>

Ambient Temperature : 23.6 °C; Liquid Temperature : 22.6 °C

DASY5 Configuration:

- Probe: ES3DV3 - SN3169; ConvF(5.14, 5.14, 5.14) @ 1860 MHz; Calibrated: 2019/5/24
- Sensor-Surface: 3mm (Mechanical Surface Detection)
- Electronics: DAE4 Sn1399; Calibrated: 2018/11/16
- Phantom: SAM\_Left; Type: QD000P40CD; Serial: TP:1815
- Measurement SW: DASY52, Version 52.10 (2); SEMCAD X Version 14.6.12 (7470)

**Area Scan (61x61x1):** Interpolated grid: dx=1.500 mm, dy=1.500 mm

Maximum value of SAR (interpolated) = 1.76 W/kg

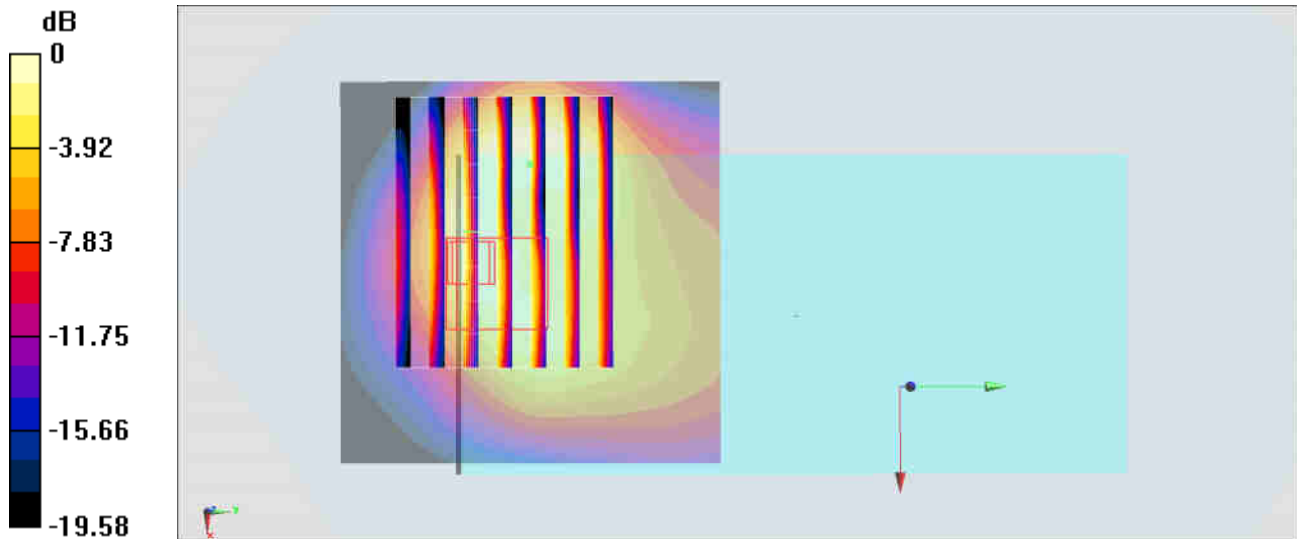
**Zoom Scan (9x7x7)/Cube 0:** Measurement grid: dx=8mm, dy=8mm, dz=5mm

Reference Value = 23.03 V/m; Power Drift = -0.04 dB

Peak SAR (extrapolated) = 2.33 W/kg

**SAR(1 g) = 1.13 W/kg; SAR(10 g) = 0.655 W/kg**

Maximum value of SAR (measured) = 1.46 W/kg



0 dB = 1.46 W/kg = 1.64 dBW/kg

**#36\_LTE Band 5\_10M\_QPSK\_1\_25\_Back\_5mm\_Ch20525**

Communication System: LTE; Frequency: 836.5 MHz; Duty Cycle: 1:1

Medium: HSL\_850\_190801 Medium parameters used:  $f = 836.5$  MHz;  $\sigma = 0.896$  S/m;  $\epsilon_r = 41.822$ ;  $\rho = 1000$  kg/m<sup>3</sup>

Ambient Temperature : 23.3 °C ; Liquid Temperature : 22.3 °C

DASY5 Configuration:

- Probe: ES3DV3 - SN3169; ConvF(6.42, 6.42, 6.42) @ 836.5 MHz; Calibrated: 2019/5/24
- Sensor-Surface: 3mm (Mechanical Surface Detection)
- Electronics: DAE4 Sn1399; Calibrated: 2018/11/16
- Phantom: SAM\_Right; Type: SAM; Serial: TP:1446
- Measurement SW: DASY52, Version 52.10 (2); SEMCAD X Version 14.6.12 (7470)

**Area Scan (61x61x1):** Interpolated grid: dx=1.500 mm, dy=1.500 mm

Maximum value of SAR (interpolated) = 1.33 W/kg

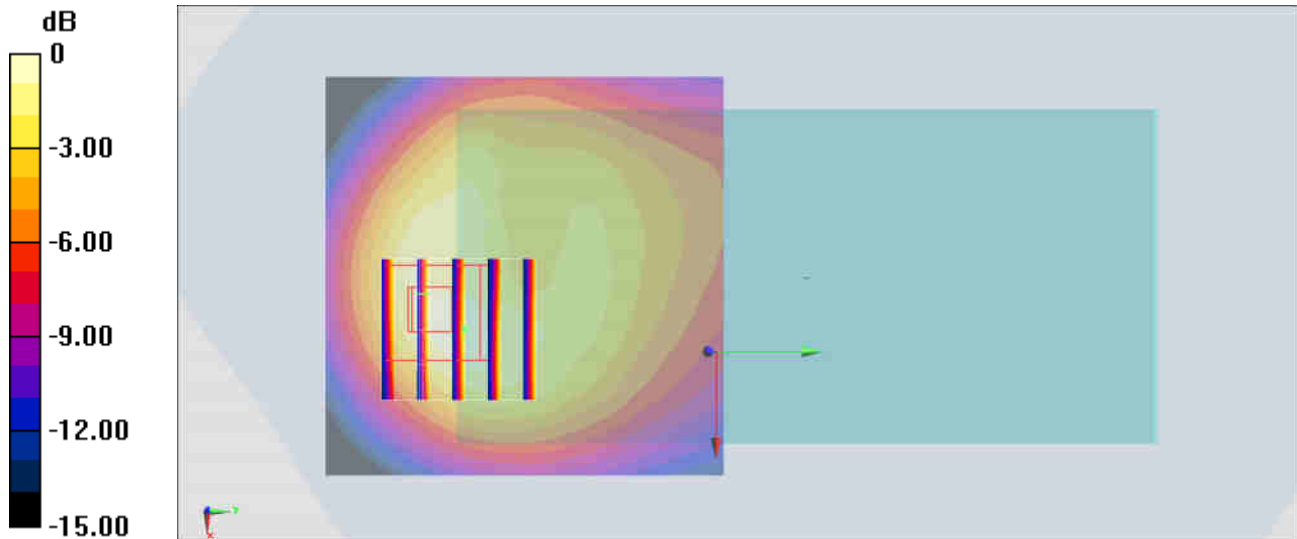
**Zoom Scan (5x5x7)/Cube 0:** Measurement grid: dx=8mm, dy=8mm, dz=5mm

Reference Value = 27.35 V/m; Power Drift = -0.01 dB

Peak SAR (extrapolated) = 1.88 W/kg

**SAR(1 g) = 1.04 W/kg; SAR(10 g) = 0.584 W/kg**

Maximum value of SAR (measured) = 1.30 W/kg



### #37\_LTE Band 7\_20M\_QPSK\_1\_0\_Back\_5mm\_Ch21350

Communication System: LTE; Frequency: 2560 MHz; Duty Cycle: 1:1

Medium: HSL\_2600\_190805 Medium parameters used:  $f = 2560$  MHz;  $\sigma = 1.921$  S/m;  $\epsilon_r = 38.844$ ;  $\rho = 1000$  kg/m<sup>3</sup>

Ambient Temperature : 23.6 °C ; Liquid Temperature : 22.6 °C

DASY5 Configuration:

- Probe: ES3DV3 - SN3169; ConvF(4.38, 4.38, 4.38) @ 2560 MHz; Calibrated: 2019/5/24
- Sensor-Surface: 3mm (Mechanical Surface Detection)
- Electronics: DAE4 Sn1399; Calibrated: 2018/11/16
- Phantom: SAM\_Right; Type: SAM; Serial: TP:1446
- Measurement SW: DASY52, Version 52.10 (2); SEMCAD X Version 14.6.12 (7470)

**Area Scan (91x61x1):** Interpolated grid: dx=1.200 mm, dy=1.200 mm

Maximum value of SAR (interpolated) = 1.63 W/kg

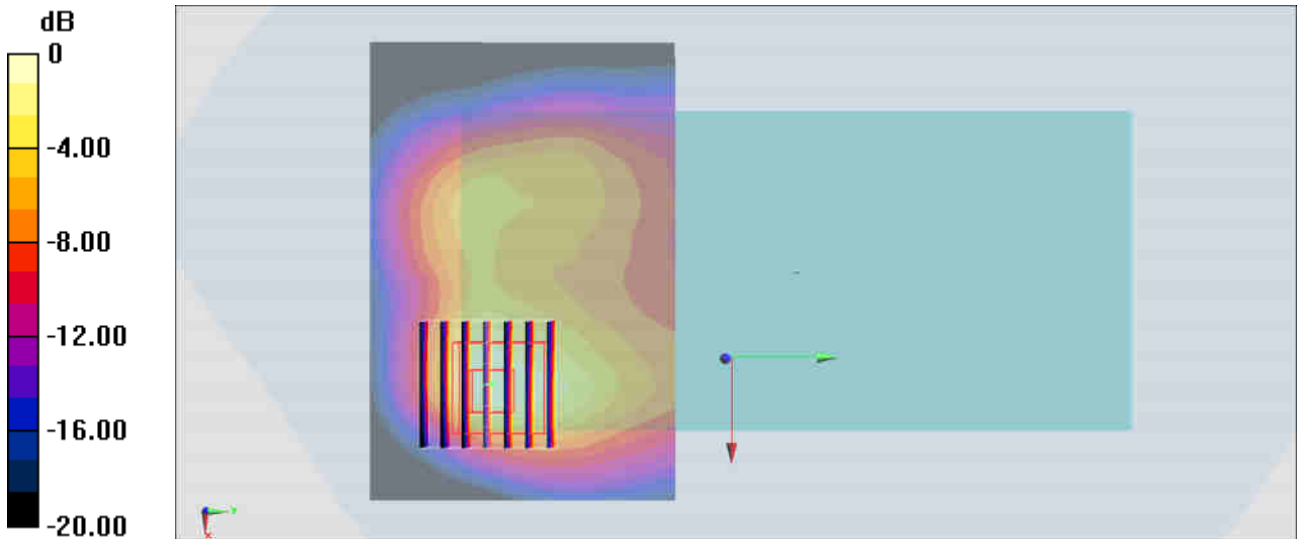
**Zoom Scan (7x7x7)/Cube 0:** Measurement grid: dx=5mm, dy=5mm, dz=5mm

Reference Value = 21.45 V/m; Power Drift = -0.06 dB

Peak SAR (extrapolated) = 2.69 W/kg

**SAR(1 g) = 1.1 W/kg; SAR(10 g) = 0.484 W/kg**

Maximum value of SAR (measured) = 1.46 W/kg



0 dB = 1.46 W/kg = 1.64 dBW/kg

**#38\_LTE Band 12\_10M\_QPSK\_1\_25\_Back\_5mm\_Ch23095**

Communication System: LTE; Frequency: 707.5 MHz; Duty Cycle: 1:1

Medium: HSL\_750\_190731 Medium parameters used:  $f = 707.5$  MHz;  $\sigma = 0.854$  S/m;  $\epsilon_r = 41.05$ ;  $\rho = 1000$  kg/m<sup>3</sup>

Ambient Temperature : 23.6 °C ; Liquid Temperature : 22.6 °C

DASY5 Configuration:

- Probe: ES3DV3 - SN3169; ConvF(6.68, 6.68, 6.68) @ 707.5 MHz; Calibrated: 2019/5/24
- Sensor-Surface: 3mm (Mechanical Surface Detection)
- Electronics: DAE4 Sn1399; Calibrated: 2018/11/16
- Phantom: SAM\_Right; Type: SAM; Serial: TP:1446
- Measurement SW: DASY52, Version 52.10 (2); SEMCAD X Version 14.6.12 (7470)

**Area Scan (71x51x1):** Interpolated grid: dx=1.500 mm, dy=1.500 mm

Maximum value of SAR (interpolated) = 0.822 W/kg

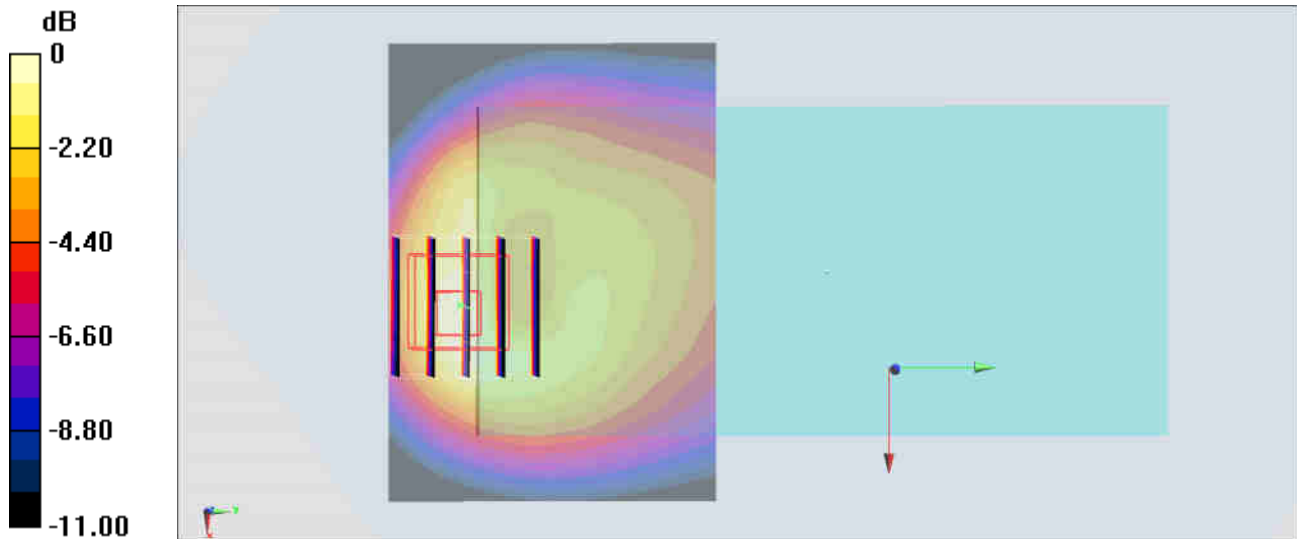
**Zoom Scan (5x5x7)/Cube 0:** Measurement grid: dx=8mm, dy=8mm, dz=5mm

Reference Value = 28.37 V/m; Power Drift = -0.05 dB

Peak SAR (extrapolated) = 1.24 W/kg

**SAR(1 g) = 0.644 W/kg; SAR(10 g) = 0.355 W/kg**

Maximum value of SAR (measured) = 0.840 W/kg



0 dB = 0.840 W/kg = -0.76 dBW/kg

**#39\_LTE Band 66\_20M\_QPSK\_1\_0\_Back\_5mm\_Ch132322**

Communication System: LTE; Frequency: 1745 MHz; Duty Cycle: 1:1

Medium: HSL\_1750\_190802 Medium parameters used:  $f = 1745$  MHz;  $\sigma = 1.386$  S/m;  $\epsilon_r = 40.094$ ;  $\rho = 1000$  kg/m<sup>3</sup>

Ambient Temperature : 23.7 °C; Liquid Temperature : 22.7 °C

DASY5 Configuration:

- Probe: ES3DV3 - SN3169; ConvF(5.34, 5.34, 5.34) @ 1745 MHz; Calibrated: 2019/5/24
- Sensor-Surface: 3mm (Mechanical Surface Detection)
- Electronics: DAE4 Sn1399; Calibrated: 2018/11/16
- Phantom: SAM\_Left; Type: QD000P40CD; Serial: TP:1815
- Measurement SW: DASY52, Version 52.10 (2); SEMCAD X Version 14.6.12 (7470)

**Area Scan (61x61x1):** Interpolated grid: dx=1.500 mm, dy=1.500 mm

Maximum value of SAR (interpolated) = 1.34 W/kg

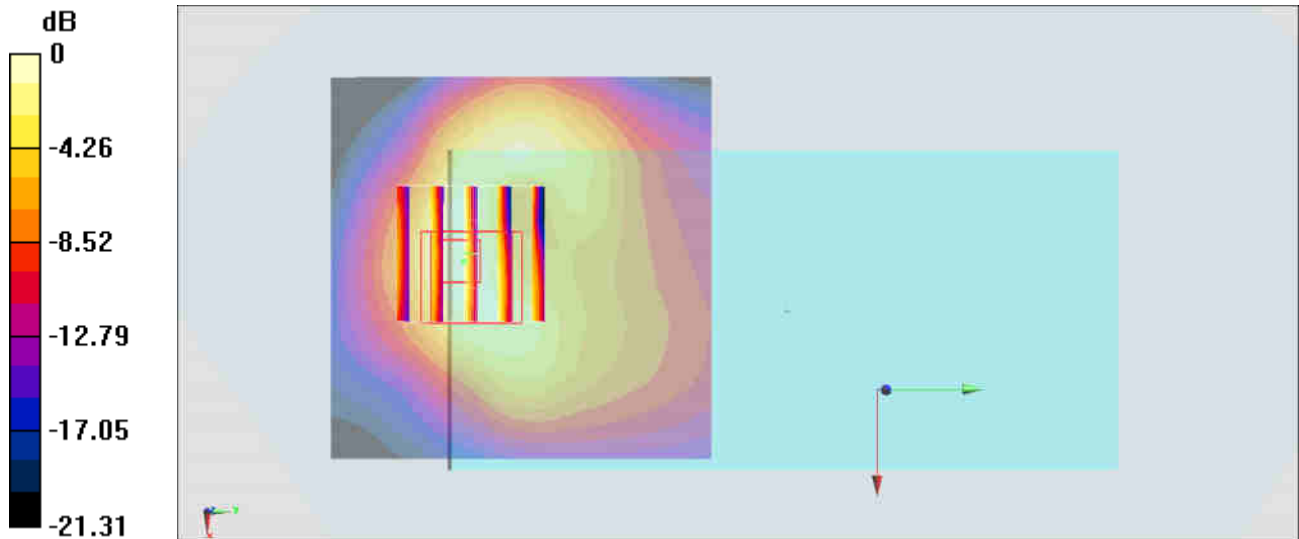
**Zoom Scan (5x5x7)/Cube 0:** Measurement grid: dx=8mm, dy=8mm, dz=5mm

Reference Value = 20.98 V/m; Power Drift = 0.11 dB

Peak SAR (extrapolated) = 1.78 W/kg

**SAR(1 g) = 1.08 W/kg; SAR(10 g) = 0.556 W/kg**

Maximum value of SAR (measured) = 1.29 W/kg



0 dB = 1.29 W/kg = 1.11 dBW/kg

**#40\_WLAN2.4GHz\_802.11b 1Mbps\_Back\_5mm\_Ch6**

Communication System: 802.11b; Frequency: 2437 MHz; Duty Cycle: 1:1

Medium: HSL\_2450\_190806 Medium parameters used:  $f = 2437$  MHz;  $\sigma = 1.778$  S/m;  $\epsilon_r = 39.909$ ;  $\rho = 1000$  kg/m<sup>3</sup>

Ambient Temperature : 23.8 °C; Liquid Temperature : 22.8 °C

DASY5 Configuration:

- Probe: EX3DV4 - SN3931; ConvF(7.54, 7.54, 7.54) @ 2437 MHz; Calibrated: 2018/9/27
- Sensor-Surface: 1.4mm (Mechanical Surface Detection)
- Electronics: DAE4 Sn1399; Calibrated: 2018/11/16
- Phantom: SAM\_Right; Type: SAM; Serial: TP:1446
- Measurement SW: DASY52, Version 52.10 (2); SEMCAD X Version 14.6.12 (7470)

**Area Scan (71x71x1):** Interpolated grid: dx=1.200 mm, dy=1.200 mm

Maximum value of SAR (interpolated) = 0.955 W/kg

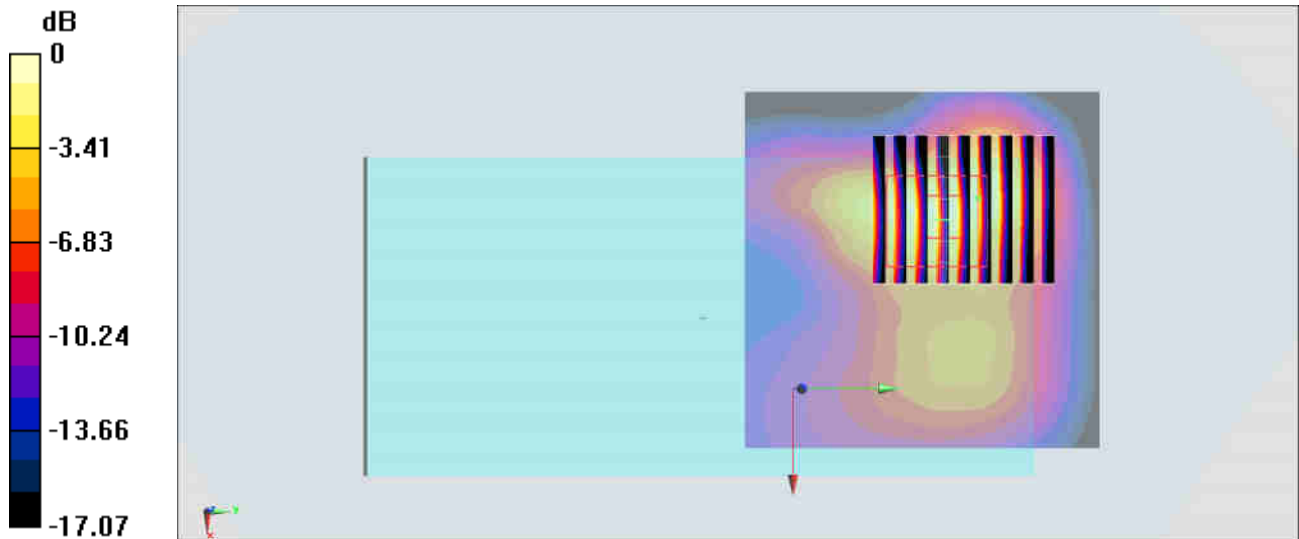
**Zoom Scan (8x9x7)/Cube 0:** Measurement grid: dx=5mm, dy=5mm, dz=5mm

Reference Value = 23.15 V/m; Power Drift = -0.01 dB

Peak SAR (extrapolated) = 1.49 W/kg

**SAR(1 g) = 0.720 W/kg; SAR(10 g) = 0.321 W/kg**

Maximum value of SAR (measured) = 1.19 W/kg



0 dB = 1.19 W/kg = 0.76 dBW/kg

**#41\_WLAN5GHz\_802.11a 6Mbps\_Back\_5mm\_Ch56**

Communication System: 802.11a; Frequency: 5280 MHz; Duty Cycle: 1:1.018

Medium: HSL\_5G\_190807 Medium parameters used:  $f = 5280$  MHz;  $\sigma = 4.741$  S/m;  $\epsilon_r = 36.024$ ;  $\rho = 1000$  kg/m<sup>3</sup>

Ambient Temperature : 23.5 °C ; Liquid Temperature : 22.5 °C

DASY5 Configuration:

- Probe: EX3DV4 - SN3931; ConvF(5.12, 5.12, 5.12) @ 5280 MHz; Calibrated: 2018/9/27
- Sensor-Surface: 1.4mm (Mechanical Surface Detection)
- Electronics: DAE4 Sn1399; Calibrated: 2018/11/16
- Phantom: SAM\_Left; Type: QD000P40CD; Serial: TP:1815
- Measurement SW: DASY52, Version 52.10 (2); SEMCAD X Version 14.6.12 (7470)

**Area Scan (81x71x1):** Interpolated grid: dx=1.000 mm, dy=1.000 mm

Maximum value of SAR (interpolated) = 1.82 W/kg

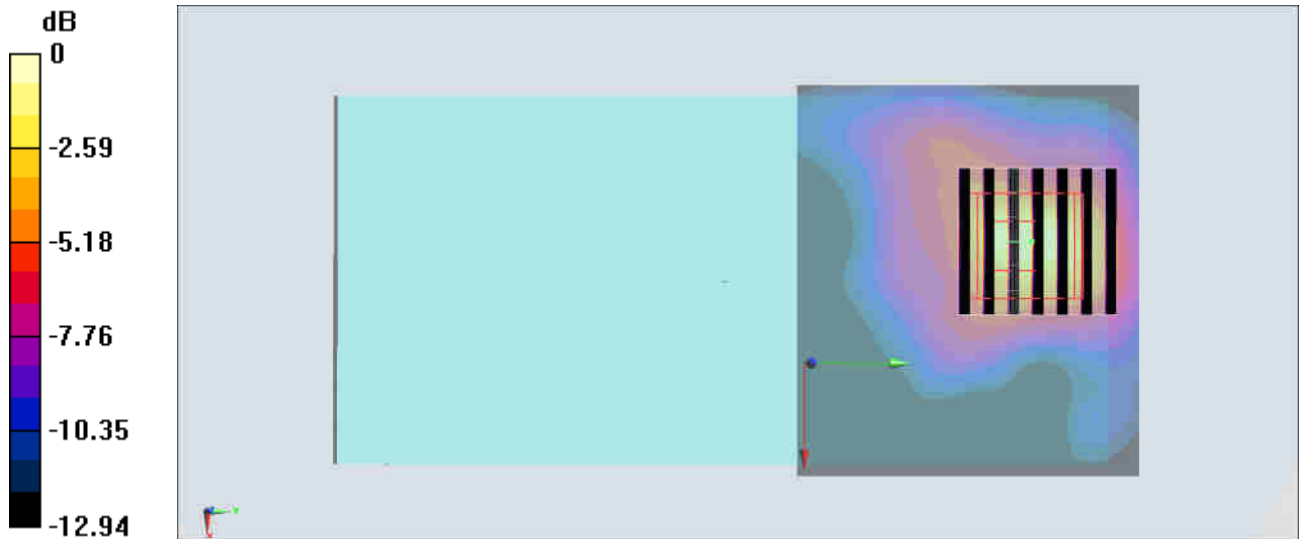
**Zoom Scan (7x7x7)/Cube 0:** Measurement grid: dx=4mm, dy=4mm, dz=1.4mm

Reference Value = 20.55 V/m; Power Drift = -0.03 dB

Peak SAR (extrapolated) = 3.80 W/kg

**SAR(1 g) = 0.888 W/kg; SAR(10 g) = 0.293 W/kg**

Maximum value of SAR (measured) = 2.29 W/kg



0 dB = 2.29 W/kg = 3.60 dBW/kg

**#42\_WLAN5GHz\_802.11a 6Mbps\_Back\_5mm\_Ch144**

Communication System: 802.11a ; Frequency: 5720 MHz; Duty Cycle: 1:1.018

Medium: HSL\_5G\_190814 Medium parameters used:  $f = 5720$  MHz;  $\sigma = 5.048$  S/m;  $\epsilon_r = 36.673$ ;  $\rho = 1000$  kg/m<sup>3</sup>

Ambient Temperature : 23.3 °C ; Liquid Temperature : 22.3 °C

DASY5 Configuration:

- Probe: EX3DV4 - SN3931; ConvF(4.72, 4.72, 4.72) @ 5720 MHz; Calibrated: 2018/9/27
- Sensor-Surface: 1.4mm (Mechanical Surface Detection)
- Electronics: DAE4 Sn1399; Calibrated: 2018/11/16
- Phantom: SAM\_Right; Type: SAM; Serial: TP:1446
- Measurement SW: DASY52, Version 52.10 (2); SEMCAD X Version 14.6.12 (7450)

**Area Scan (81x81x1):** Interpolated grid: dx=1.000 mm, dy=1.000 mm

Maximum value of SAR (interpolated) = 1.63 W/kg

**Zoom Scan (7x7x7)/Cube 0:** Measurement grid: dx=4mm, dy=4mm, dz=1.4mm

Reference Value = 20.48 V/m; Power Drift = 0.17 dB

Peak SAR (extrapolated) = 3.39 W/kg

**SAR(1 g) = 0.853 W/kg; SAR(10 g) = 0.238 W/kg**

Maximum value of SAR (measured) = 1.85 W/kg



0 dB = 1.85 W/kg = 2.67 dBW/kg

**#43\_WLAN5GHz\_802.11n-HT40 MCS0\_Back\_5mm\_Ch159**

Communication System: 802.11n; Frequency: 5795 MHz; Duty Cycle: 1:1.038

Medium: HSL\_5G\_190814 Medium parameters used :  $f = 5795$  MHz;  $\sigma = 5.135$  S/m;  $\epsilon_r = 36.536$ ;  $\rho = 1000$  kg/m<sup>3</sup>

Ambient Temperature : 23.3 °C ; Liquid Temperature : 22.3 °C

DASY5 Configuration:

- Probe: EX3DV4 - SN3931; ConvF(4.72, 4.72, 4.72) @ 5795 MHz; Calibrated: 2018/9/27
- Sensor-Surface: 1.4mm (Mechanical Surface Detection)
- Electronics: DAE4 Sn1399; Calibrated: 2018/11/16
- Phantom: SAM\_Right; Type: SAM; Serial: TP:1446
- Measurement SW: DASY52, Version 52.10 (2); SEMCAD X Version 14.6.12 (7450)

**Area Scan (81x71x1):** Interpolated grid: dx=1.000 mm, dy=1.000 mm

Maximum value of SAR (interpolated) = 1.81 W/kg

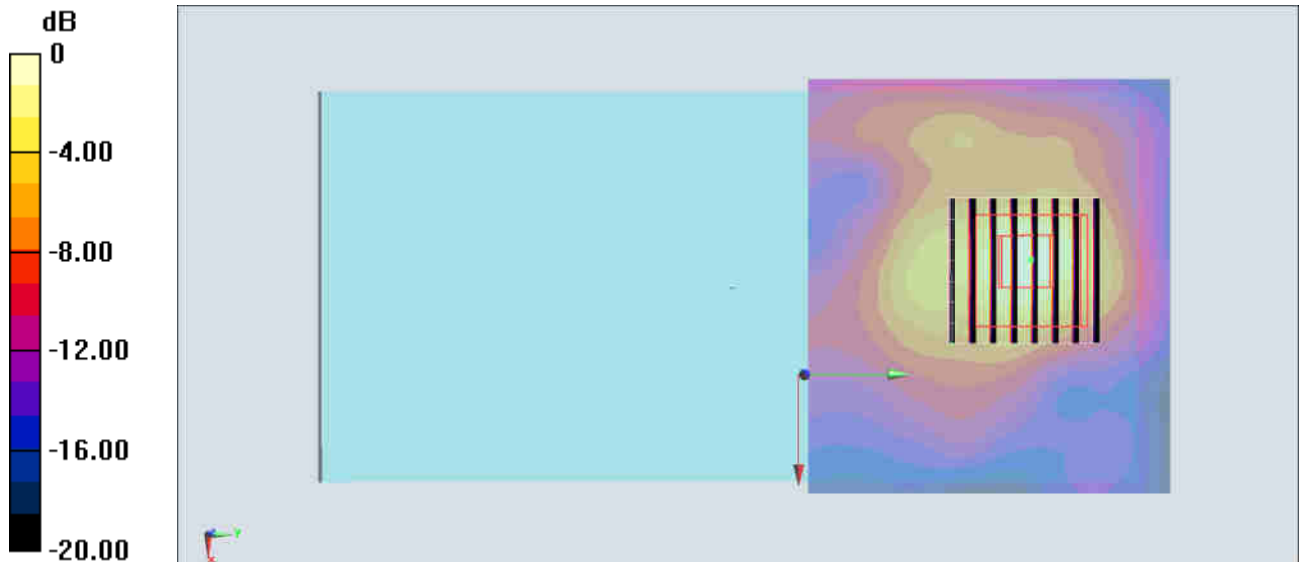
**Zoom Scan (8x8x7)/Cube 0:** Measurement grid: dx=4mm, dy=4mm, dz=1.4mm

Reference Value = 19.20 V/m; Power Drift = 0.15 dB

Peak SAR (extrapolated) = 3.50 W/kg

**SAR(1 g) = 0.868 W/kg; SAR(10 g) = 0.242 W/kg**

Maximum value of SAR (measured) = 1.96 W/kg



0 dB = 1.96 W/kg = 2.92 dBW/kg

## #44\_Bluetooth\_1Mbps\_Back\_5mm\_Ch39

Communication System: Bluetooth; Frequency: 2441 MHz; Duty Cycle: 1:1.289

Medium: HSL\_2450\_190806 Medium parameters used:  $f = 2441$  MHz;  $\sigma = 1.783$  S/m;  $\epsilon_r = 39.896$ ;  $\rho = 1000$  kg/m<sup>3</sup>

Ambient Temperature : 23.8 °C; Liquid Temperature : 22.8 °C

DASY5 Configuration:

- Probe: EX3DV4 - SN3931; ConvF(7.54, 7.54, 7.54) @ 2441 MHz; Calibrated: 2018/9/27
- Sensor-Surface: 1.4mm (Mechanical Surface Detection)
- Electronics: DAE4 Sn1399; Calibrated: 2018/11/16
- Phantom: SAM\_Right; Type: SAM; Serial: TP:1446
- Measurement SW: DASY52, Version 52.10 (2); SEMCAD X Version 14.6.12 (7470)

**Area Scan (71x71x1):** Interpolated grid: dx=1.200 mm, dy=1.200 mm

Maximum value of SAR (interpolated) = 0.139 W/kg

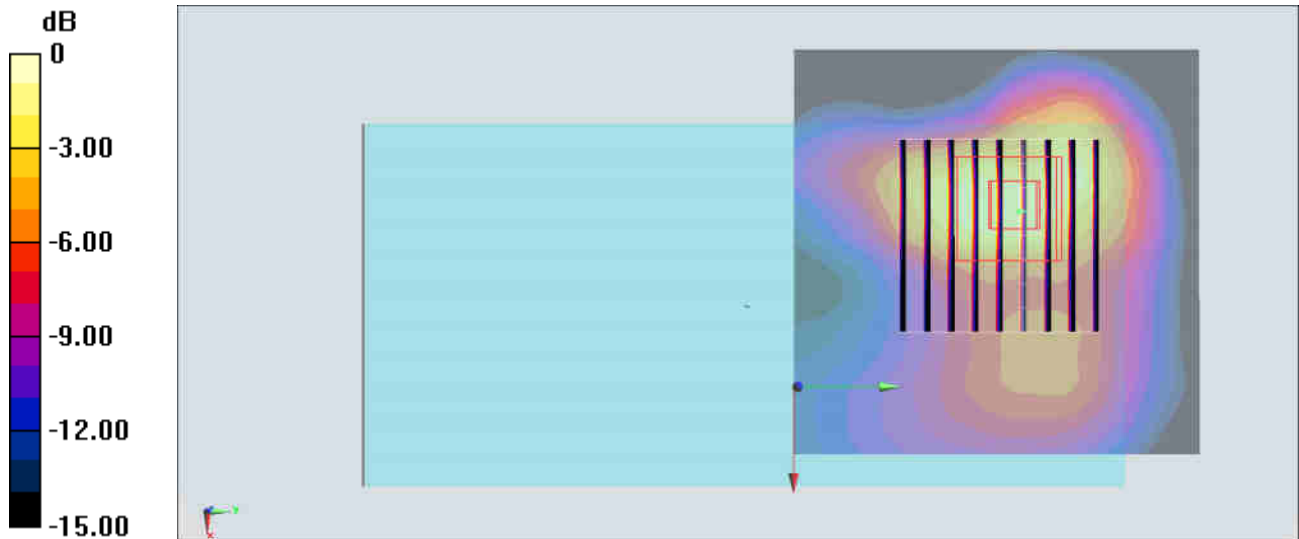
**Zoom Scan (9x9x7)/Cube 0:** Measurement grid: dx=5mm, dy=5mm, dz=5mm

Reference Value = 9.474 V/m; Power Drift = -0.02 dB

Peak SAR (extrapolated) = 0.234 W/kg

**SAR(1 g) = 0.112 W/kg; SAR(10 g) = 0.050 W/kg**

Maximum value of SAR (measured) = 0.178 W/kg



0 dB = 0.178 W/kg = -7.50 dBW/kg

## #45\_GSM1900\_GPRS (2 Tx slots)\_Back\_0mm\_Ch512

Communication System: PCS; Frequency: 1850.2 MHz; Duty Cycle: 1:4.15

Medium: HSL\_1900\_190810 Medium parameters used:  $f = 1850.2$  MHz;  $\sigma = 1.376$  S/m;  $\epsilon_r = 41.153$ ;  $\rho = 1000$  kg/m<sup>3</sup>

Ambient Temperature : 23.5 °C ; Liquid Temperature : 22.5 °C

DASY5 Configuration:

- Probe: EX3DV4 - SN3931; ConvF(8.33, 8.33, 8.33) @ 1850.2 MHz; Calibrated: 2018/9/27
- Sensor-Surface: 1.4mm (Mechanical Surface Detection)
- Electronics: DAE4 Sn1399; Calibrated: 2018/11/16
- Phantom: SAM\_Left; Type: QD000P40CD; Serial: TP:1815
- Measurement SW: DASY52, Version 52.10 (2); SEMCAD X Version 14.6.12 (7470)

**Area Scan (61x61x1):** Interpolated grid: dx=1.500 mm, dy=1.500 mm

Maximum value of SAR (interpolated) = 8.26 W/kg

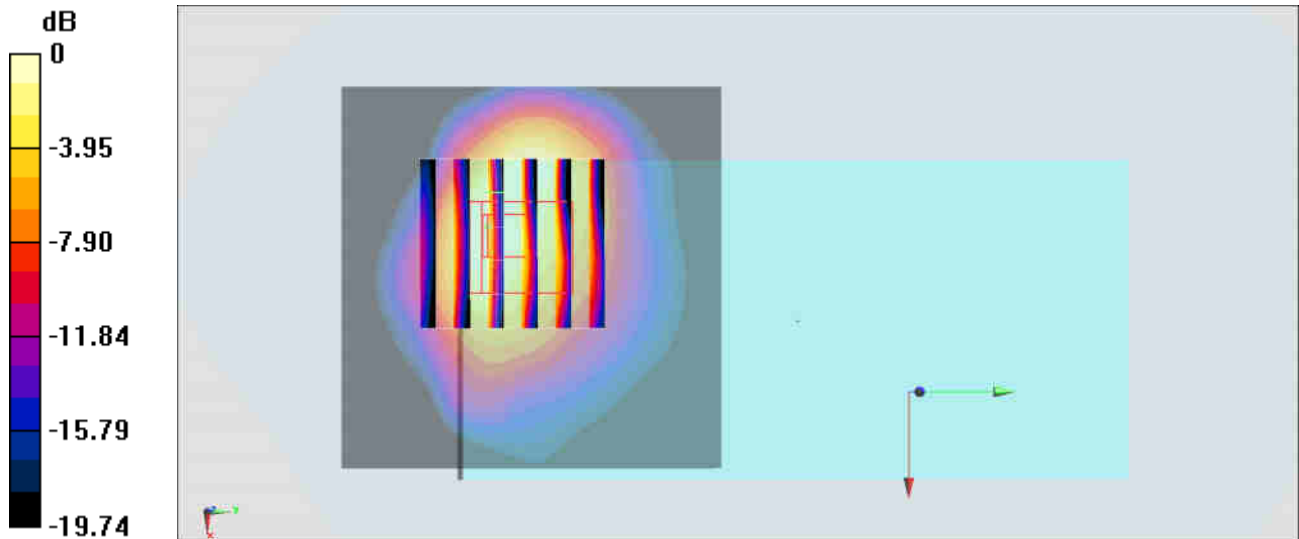
**Zoom Scan (6x6x7)/Cube 0:** Measurement grid: dx=8mm, dy=8mm, dz=5mm

Reference Value = 69.03 V/m; Power Drift = 0.09 dB

Peak SAR (extrapolated) = 10.6 W/kg

**SAR(1 g) = 4.08 W/kg; SAR(10 g) = 2.12 W/kg**

Maximum value of SAR (measured) = 7.48 W/kg



0 dB = 7.48 W/kg = 8.74 dBW/kg

**#46\_WCDMA II\_RMC 12.2Kbps\_Bottom Side\_0mm\_Ch9262**

Communication System: WCDMA; Frequency: 1852.4 MHz; Duty Cycle: 1:1

Medium: HSL\_1900\_190804 Medium parameters used :  $f = 1852.4$  MHz;  $\sigma = 1.377$  S/m;  $\epsilon_r = 39.281$ ;  $\rho = 1000$  kg/m<sup>3</sup>

Ambient Temperature : 23.6 °C ; Liquid Temperature : 22.6 °C

DASY5 Configuration:

- Probe: ES3DV3 - SN3169; ConvF(5.14, 5.14, 5.14) @ 1852.4 MHz; Calibrated: 2019/5/24
- Sensor-Surface: 3mm (Mechanical Surface Detection)
- Electronics: DAE4 Sn1399; Calibrated: 2018/11/16
- Phantom: SAM\_Left; Type: QD000P40CD; Serial: TP:1815
- Measurement SW: DASY52, Version 52.10 (2); SEMCAD X Version 14.6.12 (7470)

**Area Scan (31x71x1):** Interpolated grid: dx=1.500 mm, dy=1.500 mm

Maximum value of SAR (interpolated) = 9.57 W/kg

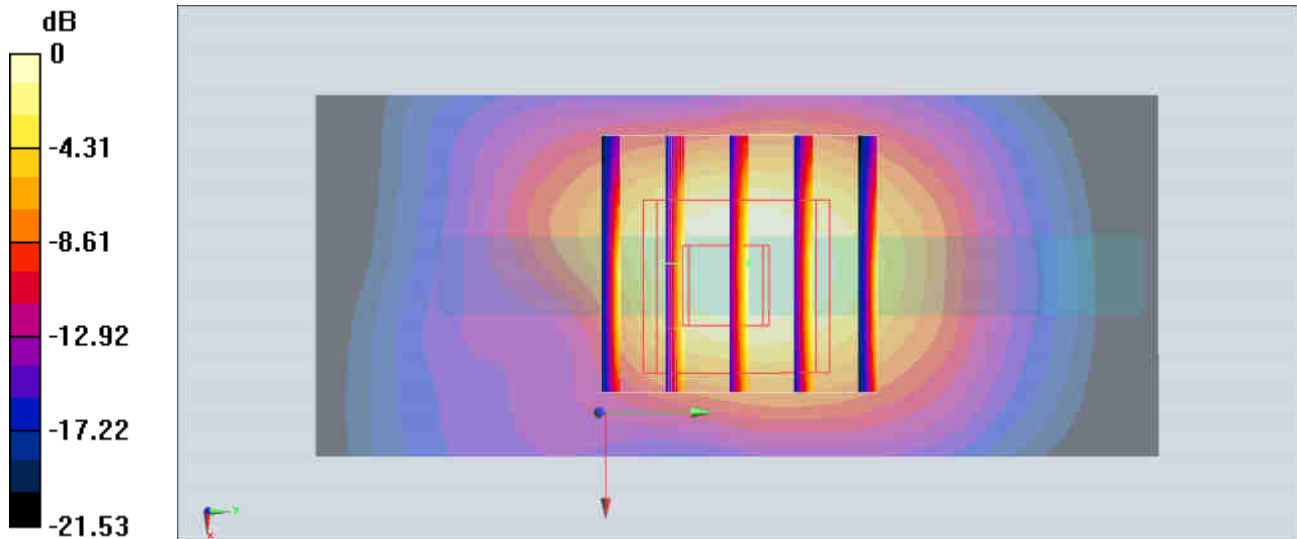
**Zoom Scan (5x5x7)/Cube 0:** Measurement grid: dx=8mm, dy=8mm, dz=5mm

Reference Value = 66.29 V/m; Power Drift = -0.07 dB

Peak SAR (extrapolated) = 12.9 W/kg

**SAR(1 g) = 6.4 W/kg; SAR(10 g) = 3.02 W/kg**

Maximum value of SAR (measured) = 7.35 W/kg



**#47\_WCDMA IV\_RMC 12.2Kbps\_Bottom Side\_0mm\_Ch1513**

Communication System: WCDMA; Frequency: 1752.6 MHz; Duty Cycle: 1:1

Medium: HSL\_1750\_190802 Medium parameters used:  $f = 1753$  MHz;  $\sigma = 1.39$  S/m;  $\epsilon_r = 40.081$ ;  $\rho = 1000$  kg/m<sup>3</sup>

Ambient Temperature : 23.7 °C ; Liquid Temperature : 22.7 °C

DASY5 Configuration:

- Probe: ES3DV3 - SN3169; ConvF(5.34, 5.34, 5.34) @ 1752.6 MHz; Calibrated: 2019/5/24
- Sensor-Surface: 3mm (Mechanical Surface Detection)
- Electronics: DAE4 Sn1399; Calibrated: 2018/11/16
- Phantom: SAM\_Left; Type: QD000P40CD; Serial: TP:1815
- Measurement SW: DASY52, Version 52.10 (2); SEMCAD X Version 14.6.12 (7470)

**Area Scan (31x61x1):** Interpolated grid: dx=1.500 mm, dy=1.500 mm

Maximum value of SAR (interpolated) = 7.48 W/kg

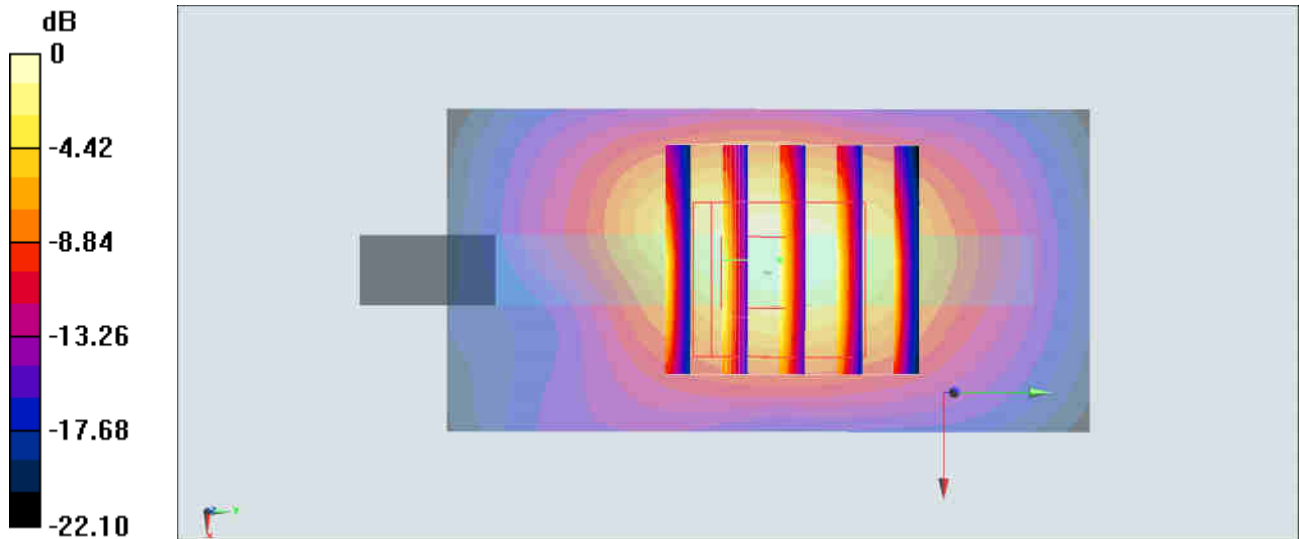
**Zoom Scan (5x5x7)/Cube 0:** Measurement grid: dx=8mm, dy=8mm, dz=5mm

Reference Value = 67.54 V/m; Power Drift = -0.02 dB

Peak SAR (extrapolated) = 12.3 W/kg

**SAR(1 g) = 5.81 W/kg; SAR(10 g) = 2.64 W/kg**

Maximum value of SAR (measured) = 7.43 W/kg



0 dB = 7.43 W/kg = 8.71 dBW/kg

**#48\_WCDMA V\_RMC 12.2Kbps\_Back\_0mm\_Ch4233**

Communication System: WCDMA; Frequency: 846.6 MHz; Duty Cycle: 1:1

Medium: HSL\_850\_190801 Medium parameters used:  $f = 847$  MHz;  $\sigma = 0.904$  S/m;  $\epsilon_r = 41.706$ ;  $\rho = 1000$  kg/m<sup>3</sup>

Ambient Temperature : 23.3 °C ; Liquid Temperature : 22.3 °C

DASY5 Configuration:

- Probe: ES3DV3 - SN3169; ConvF(6.42, 6.42, 6.42) @ 846.6 MHz; Calibrated: 2019/5/24
- Sensor-Surface: 3mm (Mechanical Surface Detection)
- Electronics: DAE4 Sn1399; Calibrated: 2018/11/16
- Phantom: SAM\_Right; Type: SAM; Serial: TP:1446
- Measurement SW: DASY52, Version 52.10 (2); SEMCAD X Version 14.6.12 (7470)

**Area Scan (61x61x1):** Interpolated grid: dx=1.500 mm, dy=1.500 mm

Maximum value of SAR (interpolated) = 5.85 W/kg

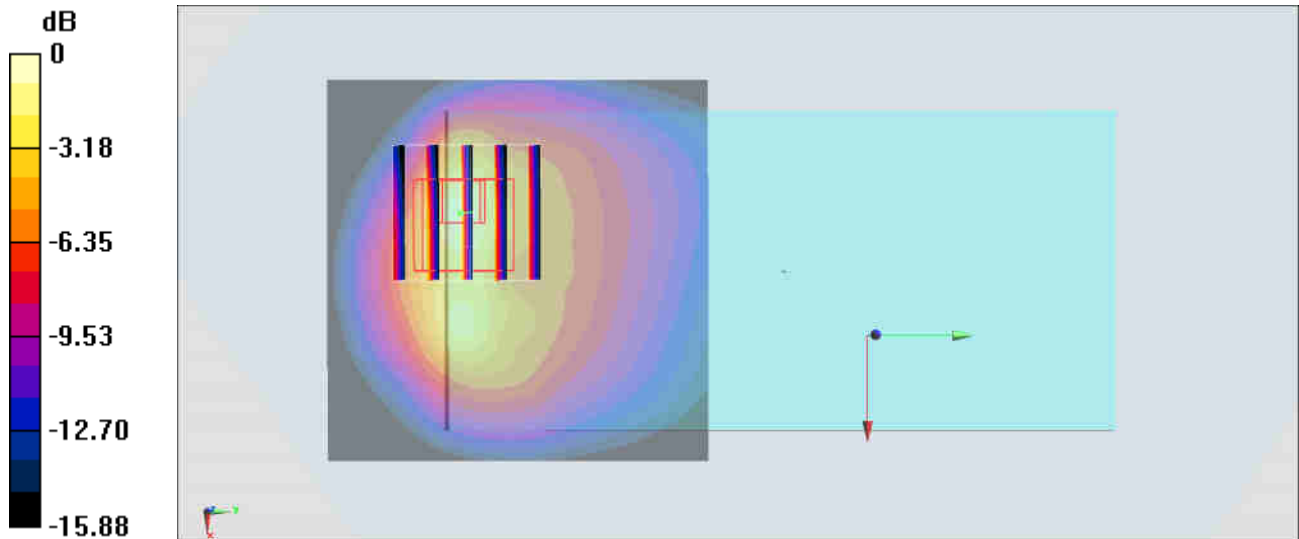
**Zoom Scan (5x5x7)/Cube 0:** Measurement grid: dx=8mm, dy=8mm, dz=5mm

Reference Value = 67.75 V/m; Power Drift = 0.11 dB

Peak SAR (extrapolated) = 15.2 W/kg

**SAR(1 g) = 4.44 W/kg; SAR(10 g) = 1.93 W/kg**

Maximum value of SAR (measured) = 6.45 W/kg



0 dB = 6.45 W/kg = 8.10 dBW/kg

**#49\_LTE Band 2\_20M\_QPSK\_50\_0\_Back\_0mm\_Ch19100**

Communication System: LTE; Frequency: 1900 MHz; Duty Cycle: 1:1

Medium: HSL\_1900\_190804 Medium parameters used:  $f = 1900$  MHz;  $\sigma = 1.418$  S/m;  $\epsilon_r = 38.831$ ;  $\rho = 1000$  kg/m<sup>3</sup>

Ambient Temperature : 23.6 °C ; Liquid Temperature : 22.6 °C

DASY5 Configuration:

- Probe: ES3DV3 - SN3169; ConvF(5.14, 5.14, 5.14) @ 1900 MHz; Calibrated: 2019/5/24
- Sensor-Surface: 3mm (Mechanical Surface Detection)
- Electronics: DAE4 Sn1399; Calibrated: 2018/11/16
- Phantom: SAM\_Left; Type: QD000P40CD; Serial: TP:1815
- Measurement SW: DASY52, Version 52.10 (2); SEMCAD X Version 14.6.12 (7470)

**Area Scan (71x61x1):** Interpolated grid: dx=1.500 mm, dy=1.500 mm

Maximum value of SAR (interpolated) = 8.79 W/kg

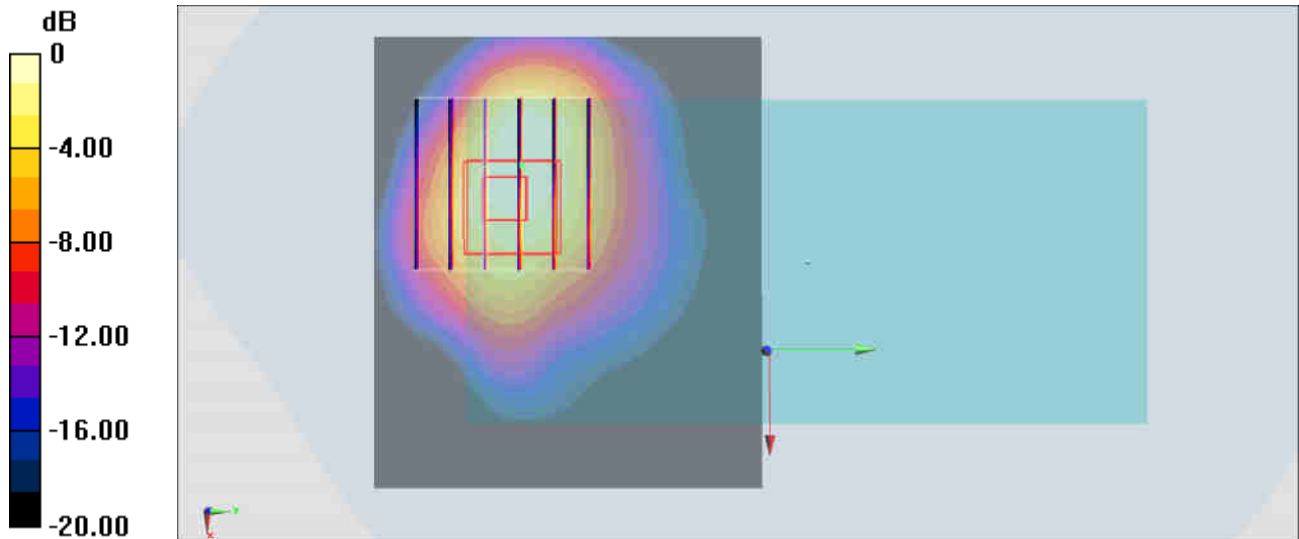
**Zoom Scan (6x6x7)/Cube 0:** Measurement grid: dx=8mm, dy=8mm, dz=5mm

Reference Value = 27.51 V/m; Power Drift = 0.03 dB

Peak SAR (extrapolated) = 13.9 W/kg

**SAR(1 g) = 6.19 W/kg; SAR(10 g) = 3.27 W/kg**

Maximum value of SAR (measured) = 8.35 W/kg



0 dB = 8.35 W/kg = 9.22 dBW/kg

**#50\_LTE Band 5\_10M\_QPSK\_1\_25\_Back\_0mm\_Ch20525**

Communication System: LTE; Frequency: 836.5 MHz; Duty Cycle: 1:1

Medium: HSL\_850\_190801 Medium parameters used:  $f = 836.5$  MHz;  $\sigma = 0.896$  S/m;  $\epsilon_r = 41.822$ ;  $\rho = 1000$  kg/m<sup>3</sup>

Ambient Temperature : 23.3 °C ; Liquid Temperature : 22.3 °C

DASY5 Configuration:

- Probe: ES3DV3 - SN3169; ConvF(6.42, 6.42, 6.42) @ 836.5 MHz; Calibrated: 2019/5/24
- Sensor-Surface: 3mm (Mechanical Surface Detection)
- Electronics: DAE4 Sn1399; Calibrated: 2018/11/16
- Phantom: SAM\_Right; Type: SAM; Serial: TP:1446
- Measurement SW: DASY52, Version 52.10 (2); SEMCAD X Version 14.6.12 (7470)

**Area Scan (61x61x1):** Interpolated grid: dx=1.500 mm, dy=1.500 mm

Maximum value of SAR (interpolated) = 5.19 W/kg

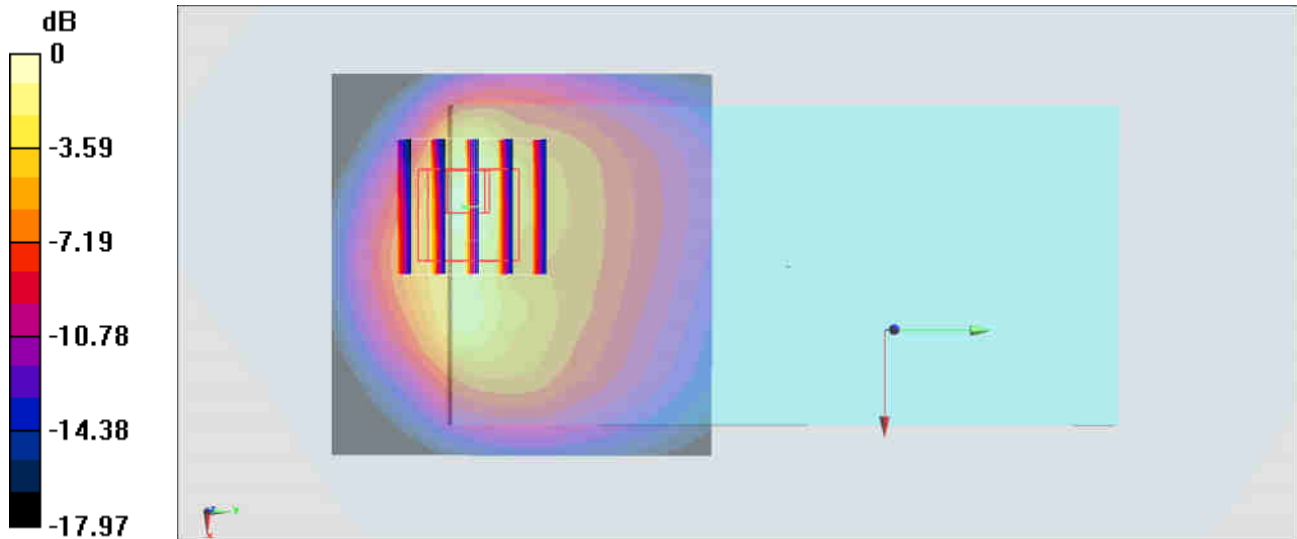
**Zoom Scan (5x5x7)/Cube 0:** Measurement grid: dx=8mm, dy=8mm, dz=5mm

Reference Value = 58.85 V/m; Power Drift = -0.01 dB

Peak SAR (extrapolated) = 12.4 W/kg

**SAR(1 g) = 3.76 W/kg; SAR(10 g) = 1.48 W/kg**

Maximum value of SAR (measured) = 5.41 W/kg



0 dB = 5.41 W/kg = 7.33 dBW/kg

**#51\_LTE Band 7\_20M\_QPSK\_1\_0\_Back\_0mm\_Ch21350**

Communication System: LTE; Frequency: 2560 MHz; Duty Cycle: 1:1

Medium: HSL\_2600\_190805 Medium parameters used:  $f = 2560$  MHz;  $\sigma = 1.921$  S/m;  $\epsilon_r = 38.844$ ;  $\rho = 1000$  kg/m<sup>3</sup>

Ambient Temperature : 23.6 °C ; Liquid Temperature : 22.6 °C

DASY5 Configuration:

- Probe: ES3DV3 - SN3169; ConvF(4.38, 4.38, 4.38) @ 2560 MHz; Calibrated: 2019/5/24
- Sensor-Surface: 3mm (Mechanical Surface Detection)
- Electronics: DAE4 Sn1399; Calibrated: 2018/11/16
- Phantom: SAM\_Right; Type: SAM; Serial: TP:1446
- Measurement SW: DASY52, Version 52.10 (2); SEMCAD X Version 14.6.12 (7470)

**Area Scan (91x61x1):** Interpolated grid: dx=1.200 mm, dy=1.200 mm

Maximum value of SAR (interpolated) = 13.3 W/kg

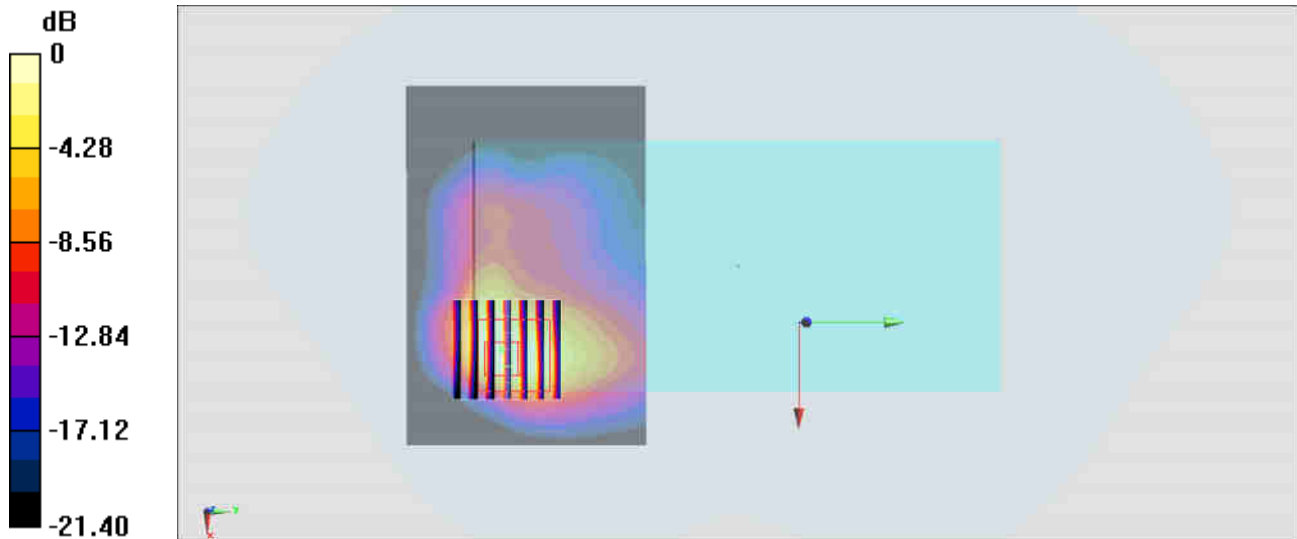
**Zoom Scan (7x7x7)/Cube 0:** Measurement grid: dx=5mm, dy=5mm, dz=5mm

Reference Value = 26.95 V/m; Power Drift = -0.14 dB

Peak SAR (extrapolated) = 21.7 W/kg

**SAR(1 g) = 7.41 W/kg; SAR(10 g) = 3.03 W/kg**

Maximum value of SAR (measured) = 9.84 W/kg



0 dB = 9.84 W/kg = 9.93 dBW/kg

**#52\_LTE Band 66\_20M\_QPSK\_1\_0\_Bottom Side\_0mm\_Ch132072**

Communication System: LTE; Frequency: 1720 MHz; Duty Cycle: 1:1

Medium: HSL\_1750\_190802 Medium parameters used:  $f = 1720$  MHz;  $\sigma = 1.371$  S/m;  $\epsilon_r = 40.139$ ;  $\rho = 1000$  kg/m<sup>3</sup>

Ambient Temperature : 23.7 °C ; Liquid Temperature : 22.7 °C

DASY5 Configuration:

- Probe: ES3DV3 - SN3169; ConvF(5.34, 5.34, 5.34) @ 1720 MHz; Calibrated: 2019/5/24
- Sensor-Surface: 3mm (Mechanical Surface Detection)
- Electronics: DAE4 Sn1399; Calibrated: 2018/11/16
- Phantom: SAM\_Left; Type: QD000P40CD; Serial: TP:1815
- Measurement SW: DASY52, Version 52.10 (2); SEMCAD X Version 14.6.12 (7470)

**Area Scan (31x61x1):** Interpolated grid: dx=1.500 mm, dy=1.500 mm

Maximum value of SAR (interpolated) = 7.13 W/kg

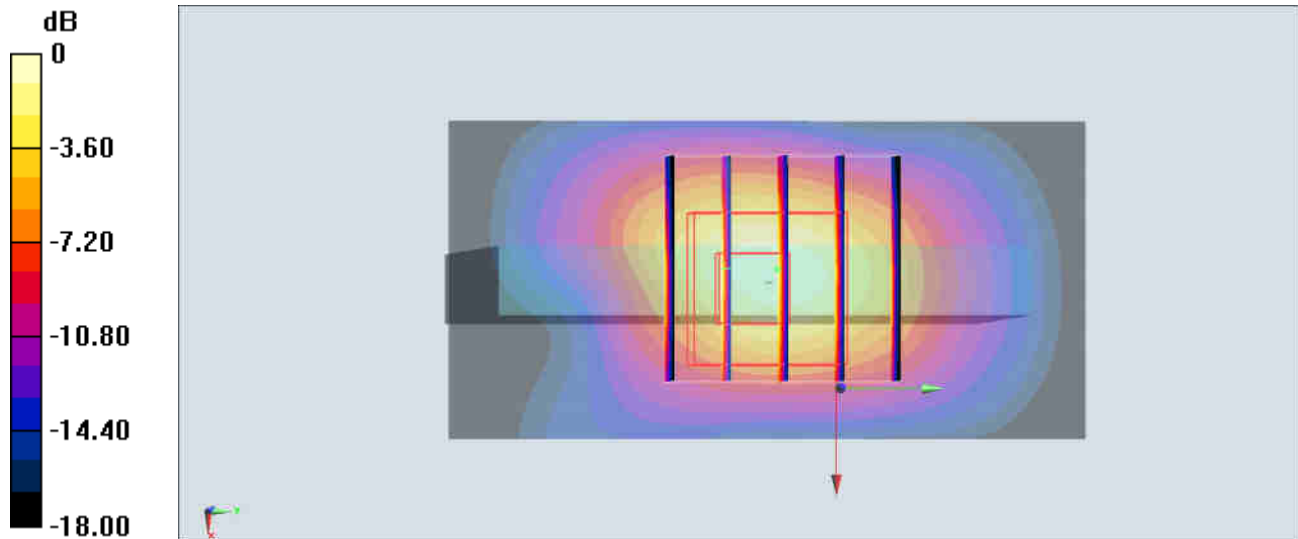
**Zoom Scan (5x5x7)/Cube 0:** Measurement grid: dx=8mm, dy=8mm, dz=5mm

Reference Value = 73.29 V/m; Power Drift = -0.03 dB

Peak SAR (extrapolated) = 12.0 W/kg

**SAR(1 g) = 6.2 W/kg; SAR(10 g) = 2.84 W/kg**

Maximum value of SAR (measured) = 7.41 W/kg



0 dB = 7.41 W/kg = 8.70 dBW/kg

**#53\_WLAN5GHz\_802.11a\_6Mbps\_Back\_0mm\_Ch48**

Communication System: 802.11a; Frequency: 5240 MHz; Duty Cycle: 1:1.018

Medium: HSL\_5G\_190808 Medium parameters used:  $f = 5240$  MHz;  $\sigma = 4.717$  S/m;  $\epsilon_r = 36.628$ ;  $\rho = 1000$  kg/m<sup>3</sup>

Ambient Temperature : 23.4 °C; Liquid Temperature : 22.4 °C

DASY5 Configuration:

- Probe: EX3DV4 - SN3931; ConvF(5.12, 5.12, 5.12) @ 5240 MHz; Calibrated: 2018/9/27
- Sensor-Surface: 1.4mm (Mechanical Surface Detection)
- Electronics: DAE4 Sn1399; Calibrated: 2018/11/16
- Phantom: SAM\_Left; Type: QD000P40CD; Serial: TP:1815
- Measurement SW: DASY52, Version 52.10 (2); SEMCAD X Version 14.6.12 (7470)

**Area Scan (81x81x1):** Interpolated grid: dx=1.000 mm, dy=1.000 mm

Maximum value of SAR (interpolated) = 7.73 W/kg

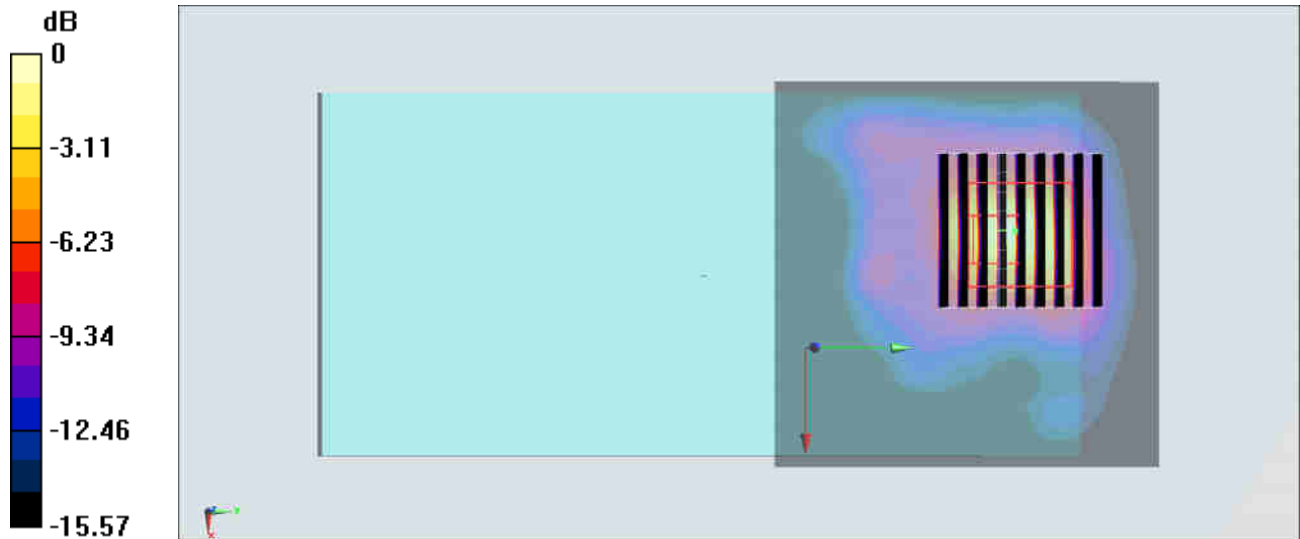
**Zoom Scan (9x9x7)/Cube 0:** Measurement grid: dx=4mm, dy=4mm, dz=1.4mm

Reference Value = 49.80 V/m; Power Drift = -0.12 dB

Peak SAR (extrapolated) = 16.8 W/kg

**SAR(1 g) = 3.51 W/kg; SAR(10 g) = 1.06 W/kg**

Maximum value of SAR (measured) = 9.05 W/kg



0 dB = 9.05 W/kg = 9.57 dBW/kg

## #54\_WLAN5GHz\_802.11a\_6Mbps\_Back\_0mm\_Ch64

Communication System: 802.11a; Frequency: 5320 MHz; Duty Cycle: 1:1.018

Medium: HSL\_5G\_190808 Medium parameters used:  $f = 5320$  MHz;  $\sigma = 4.795$  S/m;  $\epsilon_r = 36.495$ ;  $\rho = 1000$  kg/m<sup>3</sup>

Ambient Temperature : 23.4 °C; Liquid Temperature : 22.4 °C

DASY5 Configuration:

- Probe: EX3DV4 - SN3931; ConvF(5.12, 5.12, 5.12) @ 5320 MHz; Calibrated: 2018/9/27
- Sensor-Surface: 1.4mm (Mechanical Surface Detection)
- Electronics: DAE4 Sn1399; Calibrated: 2018/11/16
- Phantom: SAM\_Left; Type: QD000P40CD; Serial: TP:1815
- Measurement SW: DASY52, Version 52.10 (2); SEMCAD X Version 14.6.12 (7470)

**Area Scan (81x81x1):** Interpolated grid: dx=1.000 mm, dy=1.000 mm

Maximum value of SAR (interpolated) = 9.12 W/kg

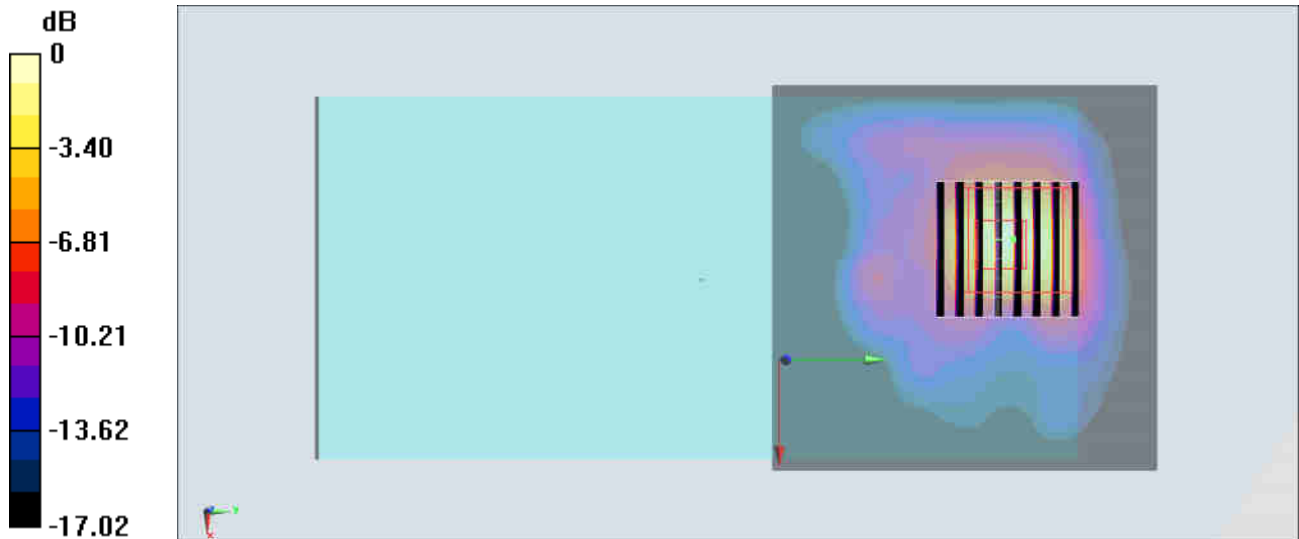
**Zoom Scan (8x8x7)/Cube 0:** Measurement grid: dx=4mm, dy=4mm, dz=1.4mm

Reference Value = 53.09 V/m; Power Drift = -0.04 dB

Peak SAR (extrapolated) = 19.2 W/kg

**SAR(1 g) = 3.99 W/kg; SAR(10 g) = 1.22 W/kg**

Maximum value of SAR (measured) = 10.3 W/kg



0 dB = 10.3 W/kg = 10.13 dBW/kg

**#55\_WLAN5GHz\_802.11a\_6Mbps\_Back\_0mm\_Ch100**

Communication System: 802.11a; Frequency: 5500 MHz; Duty Cycle: 1:1.018

Medium: HSL\_5G\_190808 Medium parameters used:  $f = 5500$  MHz;  $\sigma = 4.972$  S/m;  $\epsilon_r = 36.276$ ;  $\rho = 1000$  kg/m<sup>3</sup>

Ambient Temperature : 23.4 °C; Liquid Temperature : 22.4 °C

DASY5 Configuration:

- Probe: EX3DV4 - SN3931; ConvF(4.47, 4.47, 4.47) @ 5500 MHz; Calibrated: 2018/9/27
- Sensor-Surface: 1.4mm (Mechanical Surface Detection)
- Electronics: DAE4 Sn1399; Calibrated: 2018/11/16
- Phantom: SAM\_Left; Type: QD000P40CD; Serial: TP:1815
- Measurement SW: DASY52, Version 52.10 (2); SEMCAD X Version 14.6.12 (7470)

**Area Scan (81x81x1):** Interpolated grid: dx=1.000 mm, dy=1.000 mm

Maximum value of SAR (interpolated) = 11.7 W/kg

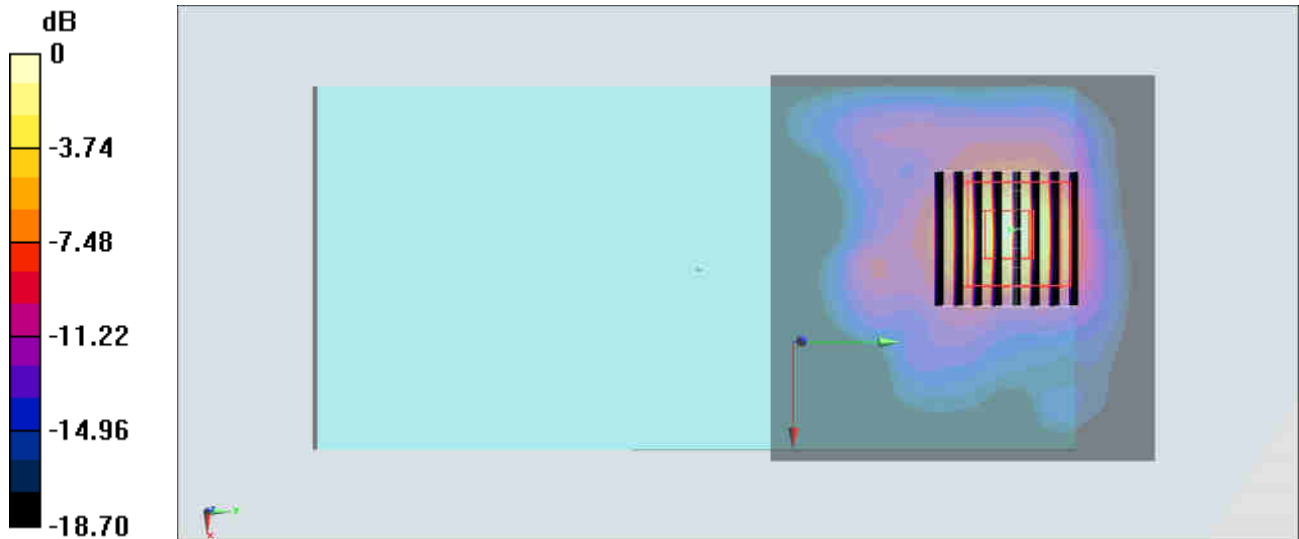
**Zoom Scan (8x8x7)/Cube 0:** Measurement grid: dx=4mm, dy=4mm, dz=1.4mm

Reference Value = 50.87 V/m; Power Drift = 0.05 dB

Peak SAR (extrapolated) = 25.0 W/kg

**SAR(1 g) = 4.69 W/kg; SAR(10 g) = 1.32 W/kg**

Maximum value of SAR (measured) = 13.6 W/kg



0 dB = 13.6 W/kg = 11.34 dBW/kg

**#56\_WLAN5GHz\_802.11a\_6Mbps\_Back\_0mm\_Ch165**

Communication System: 802.11a ; Frequency: 5825 MHz; Duty Cycle: 1:1.018

Medium: HSL\_5G\_190808 Medium parameters used:  $f = 5825$  MHz;  $\sigma = 5.326$  S/m;  $\epsilon_r = 35.878$ ;  $\rho = 1000$  kg/m<sup>3</sup>

Ambient Temperature : 23.4 °C ; Liquid Temperature : 22.4 °C

DASY5 Configuration:

- Probe: EX3DV4 - SN3931; ConvF(4.72, 4.72, 4.72) @ 5825 MHz; Calibrated: 2018/9/27
- Sensor-Surface: 1.4mm (Mechanical Surface Detection)
- Electronics: DAE4 Sn1399; Calibrated: 2018/11/16
- Phantom: SAM\_Left; Type: QD000P40CD; Serial: TP:1815
- Measurement SW: DASY52, Version 52.10 (2); SEMCAD X Version 14.6.12 (7470)

**Area Scan (81x81x1):** Interpolated grid: dx=1.000 mm, dy=1.000 mm

Maximum value of SAR (interpolated) = 16.4 W/kg

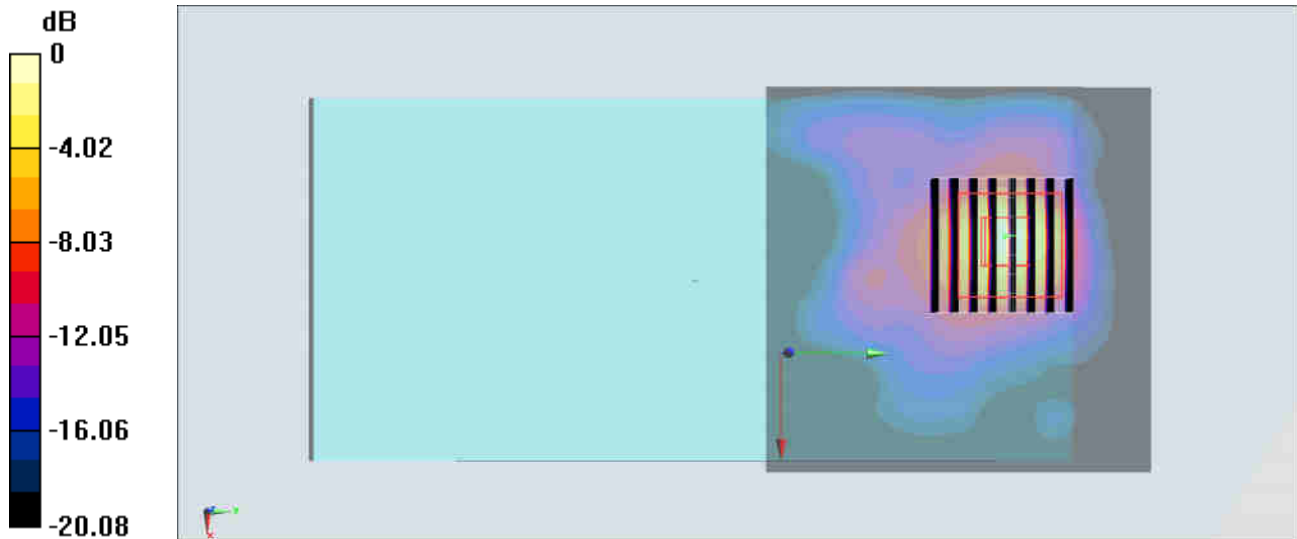
**Zoom Scan (8x8x7)/Cube 0:** Measurement grid: dx=4mm, dy=4mm, dz=1.4mm

Reference Value = 43.70 V/m; Power Drift = -0.03 dB

Peak SAR (extrapolated) = 33.5 W/kg

**SAR(1 g) = 5.64 W/kg; SAR(10 g) = 1.51 W/kg**

Maximum value of SAR (measured) = 17.5 W/kg



0 dB = 17.5 W/kg = 12.43 dBW/kg