

# #01\_HAC\_E\_GSM850\_GSM Voice\_Ch128

Communication System: GSM-FDD (TDMA, GMSK); Frequency: 824.2 MHz; Duty Cycle: 1:8.6896

Medium: Air Medium parameters used:  $\sigma = 0$  S/m,  $\epsilon_r = 1$ ;  $\rho = 0$  kg/m<sup>3</sup>

Ambient Temperature : 23.3 °C

DASY5 Configuration:

- Probe: EF3DV3 - SN4047; ConvF(1, 1, 1) @ 824.2 MHz; Calibrated: 2019/1/30
- Sensor-Surface: (Fix Surface)
- Electronics: DAE4 Sn1326; Calibrated: 2018/9/18
- Phantom: HAC Test Arch with AMCC; Type: SD HAC P01 BA;
- Measurement SW: DASY52, Version 52.10 (1); SEMCAD X Version 14.6.11 (7439)

## E Scan - ER3D: 15 mm from Probe Center to the Device/Hearing Aid Compatibility Test

**(101x101x1):** Interpolated grid: dx=0.5000 mm, dy=0.5000 mm

Device Reference Point: 0, 0, -6.3 mm

Reference Value = 16.73 V/m; Power Drift = -0.17 dB

Applied MIF = 3.63 dB

RF audio interference level = 26.21 dBV/m

**Emission category: M4**

MIF scaled E-field

<b>Grid 1 M4</b> <b>24.09 dBV/m</b>	<b>Grid 2 M4</b> <b>24.66 dBV/m</b>	<b>Grid 3 M4</b> <b>24.28 dBV/m</b>
<b>Grid 4 M4</b> <b>25.27 dBV/m</b>	<b>Grid 5 M4</b> <b>25.4 dBV/m</b>	<b>Grid 6 M4</b> <b>24.98 dBV/m</b>
<b>Grid 7 M4</b> <b>26.06 dBV/m</b>	<b>Grid 8 M4</b> <b>26.21 dBV/m</b>	<b>Grid 9 M4</b> <b>25.07 dBV/m</b>

**Cursor:**

Total = 26.21 dBV/m

E Category: M4

Location: 4, 24, 8.7 mm



## #02\_HAC\_E\_GSM850\_GSM Voice\_Ch189

Communication System: GSM-FDD (TDMA, GMSK); Frequency: 836.4 MHz; Duty Cycle: 1:8.6896

Medium: Air Medium parameters used:  $\sigma = 0$  S/m,  $\epsilon_r = 1$ ;  $\rho = 0$  kg/m<sup>3</sup>

Ambient Temperature : 23.3 °C

DASY5 Configuration:

- Probe: EF3DV3 - SN4047; ConvF(1, 1, 1) @ 836.4 MHz; Calibrated: 2019/1/30
- Sensor-Surface: (Fix Surface)
- Electronics: DAE4 Sn1326; Calibrated: 2018/9/18
- Phantom: HAC Test Arch with AMCC; Type: SD HAC P01 BA;
- Measurement SW: DASY52, Version 52.10 (1); SEMCAD X Version 14.6.11 (7439)

### E Scan - ER3D: 15 mm from Probe Center to the Device/Hearing Aid Compatibility Test (101x101x1): Interpolated grid: dx=0.5000 mm, dy=0.5000 mm

Device Reference Point: 0, 0, -6.3 mm

Reference Value = 17.26 V/m; Power Drift = -0.06 dB

Applied MIF = 3.63 dB

RF audio interference level = 26.70 dBV/m

**Emission category: M4**

MIF scaled E-field

<b>Grid 1 M4</b> <b>24.15 dBV/m</b>	<b>Grid 2 M4</b> <b>24.79 dBV/m</b>	<b>Grid 3 M4</b> <b>24.24 dBV/m</b>
<b>Grid 4 M4</b> <b>25.49 dBV/m</b>	<b>Grid 5 M4</b> <b>25.79 dBV/m</b>	<b>Grid 6 M4</b> <b>25.34 dBV/m</b>
<b>Grid 7 M4</b> <b>26.63 dBV/m</b>	<b>Grid 8 M4</b> <b>26.7 dBV/m</b>	<b>Grid 9 M4</b> <b>25.76 dBV/m</b>

**Cursor:**

Total = 26.70 dBV/m

E Category: M4

Location: 2, 25, 8.7 mm



### #03\_HAC\_E\_GSM850\_GSM Voice\_Ch251

Communication System: GSM-FDD (TDMA, GMSK); Frequency: 848.8 MHz; Duty Cycle: 1:8.6896

Medium: Air Medium parameters used:  $\sigma = 0$  S/m,  $\epsilon_r = 1$ ;  $\rho = 0$  kg/m<sup>3</sup>

Ambient Temperature : 23.3 °C

DASY5 Configuration:

- Probe: EF3DV3 - SN4047; ConvF(1, 1, 1) @ 848.8 MHz; Calibrated: 2019/1/30
- Sensor-Surface: (Fix Surface)
- Electronics: DAE4 Sn1326; Calibrated: 2018/9/18
- Phantom: HAC Test Arch with AMCC; Type: SD HAC P01 BA;
- Measurement SW: DASY52, Version 52.10 (1); SEMCAD X Version 14.6.11 (7439)

### E Scan - ER3D: 15 mm from Probe Center to the Device/Hearing Aid Compatibility Test (101x101x1): Interpolated grid: dx=0.5000 mm, dy=0.5000 mm

Device Reference Point: 0, 0, -6.3 mm

Reference Value = 15.72 V/m; Power Drift = -0.03 dB

Applied MIF = 3.63 dB

RF audio interference level = 25.88 dBV/m

**Emission category: M4**

MIF scaled E-field

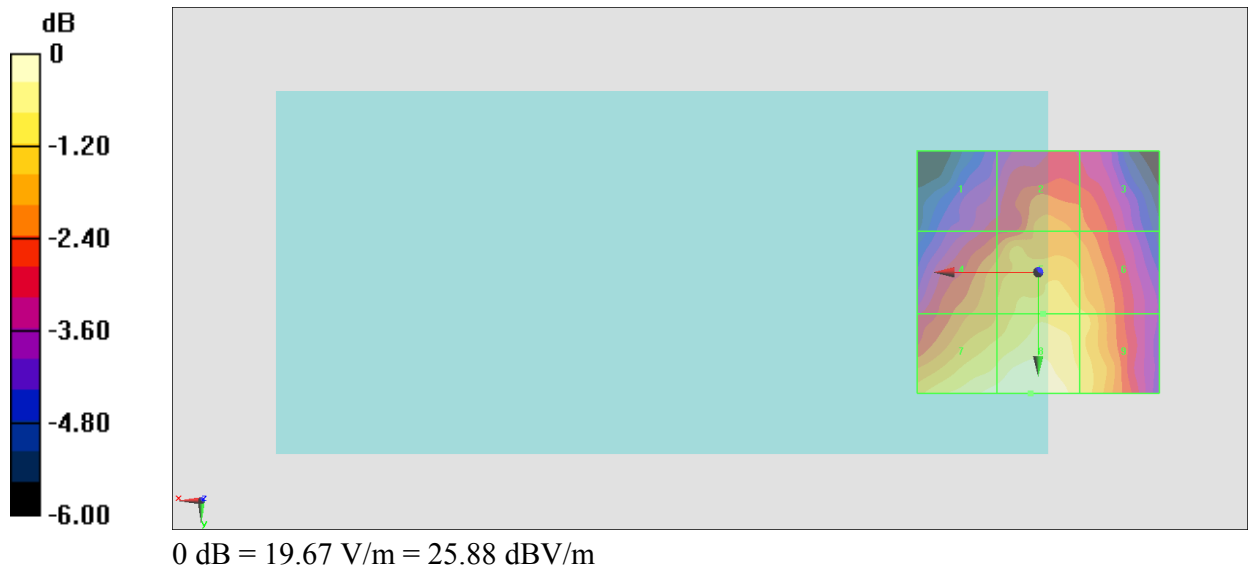
<b>Grid 1 M4</b> <b>22.97 dBV/m</b>	<b>Grid 2 M4</b> <b>24.06 dBV/m</b>	<b>Grid 3 M4</b> <b>23.75 dBV/m</b>
<b>Grid 4 M4</b> <b>24.3 dBV/m</b>	<b>Grid 5 M4</b> <b>24.97 dBV/m</b>	<b>Grid 6 M4</b> <b>24.81 dBV/m</b>
<b>Grid 7 M4</b> <b>25.67 dBV/m</b>	<b>Grid 8 M4</b> <b>25.88 dBV/m</b>	<b>Grid 9 M4</b> <b>25.12 dBV/m</b>

**Cursor:**

Total = 25.88 dBV/m

E Category: M4

Location: 1.5, 25, 8.7 mm



### #04\_HAC\_E\_GSM1900\_GSM Voice\_Ch512

Communication System: GSM-FDD (TDMA, GMSK); Frequency: 1850.2 MHz; Duty Cycle: 1:8.6896  
 Medium: Air Medium parameters used:  $\sigma = 0$  S/m,  $\epsilon_r = 1$ ;  $\rho = 0$  kg/m<sup>3</sup>  
 Ambient Temperature : 23.3 °C

**DASY5 Configuration:**

- Probe: EF3DV3 - SN4047; ConvF(1, 1, 1) @ 1850.2 MHz; Calibrated: 2019/1/30
- Sensor-Surface: (Fix Surface)
- Electronics: DAE4 Sn1326; Calibrated: 2018/9/18
- Phantom: HAC Test Arch with AMCC; Type: SD HAC P01 BA;
- Measurement SW: DASY52, Version 52.10 (1); SEMCAD X Version 14.6.11 (7439)

**E Scan - ER3D: 15 mm from Probe Center to the Device/Hearing Aid Compatibility Test (101x101x1):** Interpolated grid: dx=0.5000 mm, dy=0.5000 mm

Device Reference Point: 0, 0, -6.3 mm

Reference Value = 5.586 V/m; Power Drift = 0.19 dB

Applied MIF = 3.63 dB

RF audio interference level = 25.79 dBV/m

**Emission category: M4**

MIF scaled E-field

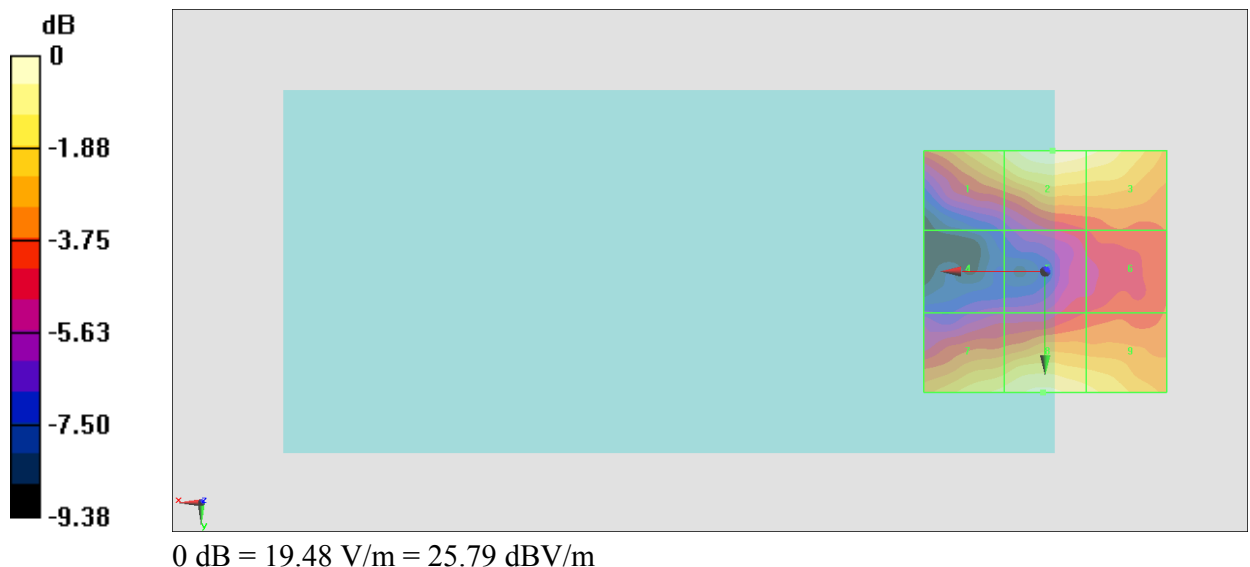
<b>Grid 1 M4</b> <b>24.81 dBV/m</b>	<b>Grid 2 M4</b> <b>25.79 dBV/m</b>	<b>Grid 3 M4</b> <b>25.44 dBV/m</b>
<b>Grid 4 M4</b> <b>20.05 dBV/m</b>	<b>Grid 5 M4</b> <b>21.44 dBV/m</b>	<b>Grid 6 M4</b> <b>22.16 dBV/m</b>
<b>Grid 7 M4</b> <b>24.8 dBV/m</b>	<b>Grid 8 M4</b> <b>25.36 dBV/m</b>	<b>Grid 9 M4</b> <b>24.8 dBV/m</b>

**Cursor:**

Total = 25.79 dBV/m

E Category: M4

Location: -1.5, -25, 8.7 mm



### #05\_HAC\_E\_GSM1900\_GSM Voice\_Ch661

Communication System: GSM-FDD (TDMA, GMSK); Frequency: 1880 MHz; Duty Cycle: 1:8.6896

Medium: Air Medium parameters used:  $\sigma = 0$  S/m,  $\epsilon_r = 1$ ;  $\rho = 0$  kg/m<sup>3</sup>

Ambient Temperature : 23.3 °C

DASY5 Configuration:

- Probe: EF3DV3 - SN4047; ConvF(1, 1, 1) @ 1880 MHz; Calibrated: 2019/1/30
- Sensor-Surface: (Fix Surface)
- Electronics: DAE4 Sn1326; Calibrated: 2018/9/18
- Phantom: HAC Test Arch with AMCC; Type: SD HAC P01 BA;
- Measurement SW: DASY52, Version 52.10 (1); SEMCAD X Version 14.6.11 (7439)

### E Scan - ER3D: 15 mm from Probe Center to the Device/Hearing Aid Compatibility Test

**(101x101x1):** Interpolated grid: dx=0.5000 mm, dy=0.5000 mm

Device Reference Point: 0, 0, -6.3 mm

Reference Value = 5.305 V/m; Power Drift = 0.12 dB

Applied MIF = 3.63 dB

RF audio interference level = 25.91 dBV/m

**Emission category: M4**

MIF scaled E-field

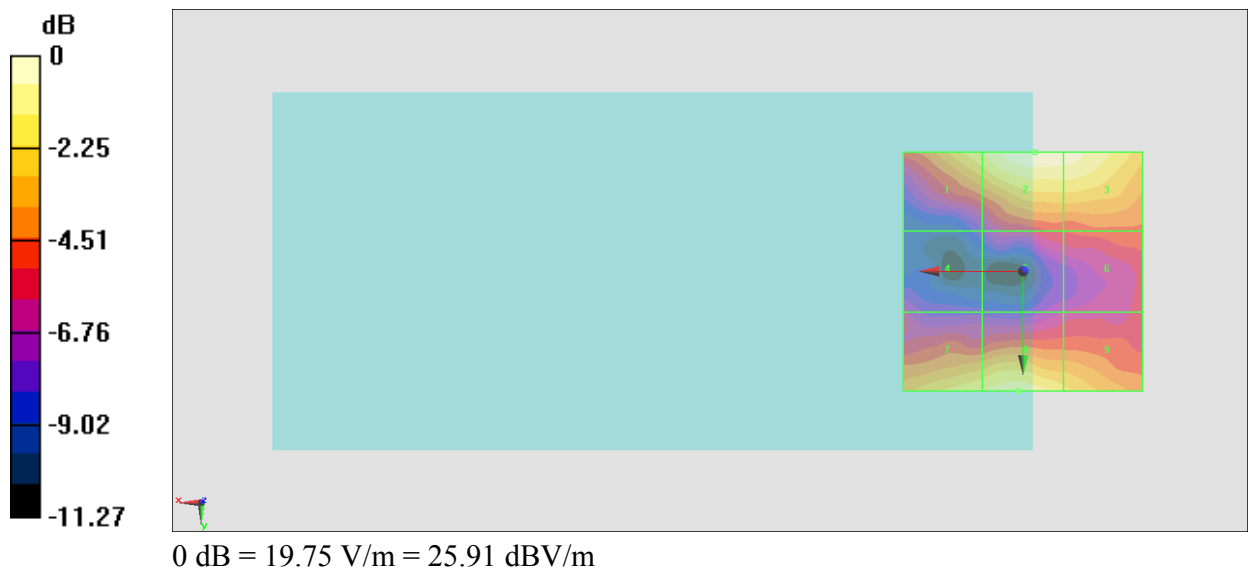
<b>Grid 1 M4</b> <b>24.55 dBV/m</b>	<b>Grid 2 M4</b> <b>25.91 dBV/m</b>	<b>Grid 3 M4</b> <b>25.71 dBV/m</b>
<b>Grid 4 M4</b> <b>19.56 dBV/m</b>	<b>Grid 5 M4</b> <b>20.81 dBV/m</b>	<b>Grid 6 M4</b> <b>21.28 dBV/m</b>
<b>Grid 7 M4</b> <b>24.47 dBV/m</b>	<b>Grid 8 M4</b> <b>24.85 dBV/m</b>	<b>Grid 9 M4</b> <b>23.91 dBV/m</b>

**Cursor:**

Total = 25.91 dBV/m

E Category: M4

Location: -2.5, -25, 8.7 mm



### #06\_HAC\_E\_GSM1900\_GSM Voice\_Ch810

Communication System: GSM-FDD (TDMA, GMSK); Frequency: 1909.8 MHz; Duty Cycle: 1:8.6896  
 Medium: Air Medium parameters used:  $\sigma = 0$  S/m,  $\epsilon_r = 1$ ;  $\rho = 0$  kg/m<sup>3</sup>  
 Ambient Temperature : 23.3 °C

**DASY5 Configuration:**

- Probe: EF3DV3 - SN4047; ConvF(1, 1, 1) @ 1909.8 MHz; Calibrated: 2019/1/30
- Sensor-Surface: (Fix Surface)
- Electronics: DAE4 Sn1326; Calibrated: 2018/9/18
- Phantom: HAC Test Arch with AMCC; Type: SD HAC P01 BA;
- Measurement SW: DASY52, Version 52.10 (1); SEMCAD X Version 14.6.11 (7439)

**E Scan - ER3D: 15 mm from Probe Center to the Device/Hearing Aid Compatibility Test (101x101x1):** Interpolated grid: dx=0.5000 mm, dy=0.5000 mm

Device Reference Point: 0, 0, -6.3 mm

Reference Value = 6.991 V/m; Power Drift = -0.18 dB

Applied MIF = 3.63 dB

RF audio interference level = 27.30 dBV/m

**Emission category: M4**

MIF scaled E-field

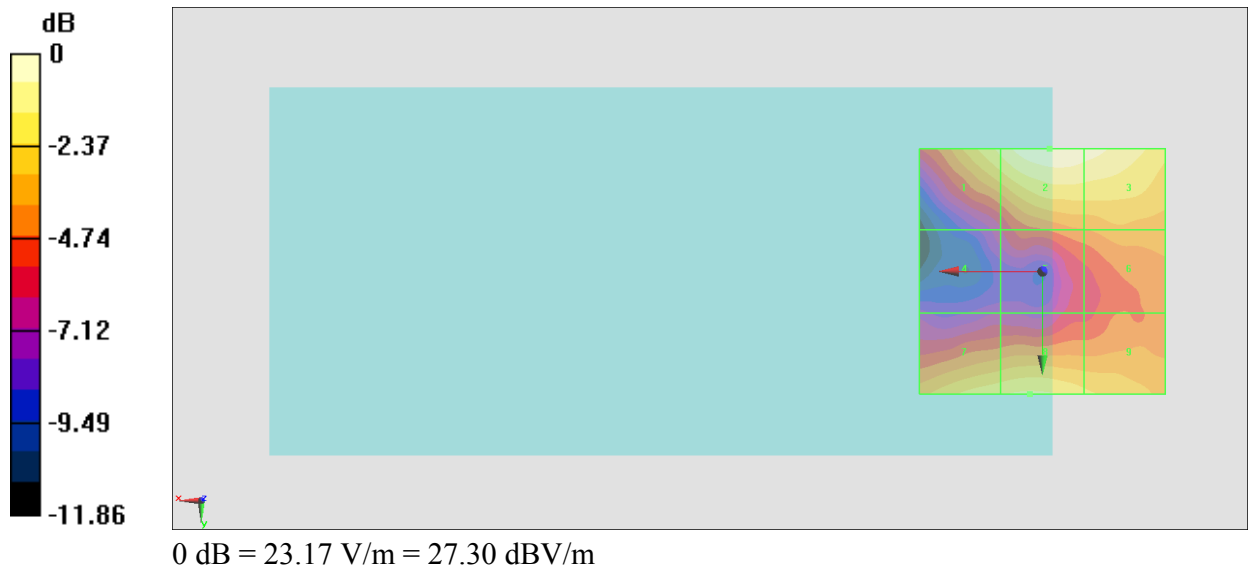
<b>Grid 1 M4</b> <b>26 dBV/m</b>	<b>Grid 2 M4</b> <b>27.3 dBV/m</b>	<b>Grid 3 M4</b> <b>26.98 dBV/m</b>
<b>Grid 4 M4</b> <b>20.92 dBV/m</b>	<b>Grid 5 M4</b> <b>23.32 dBV/m</b>	<b>Grid 6 M4</b> <b>23.94 dBV/m</b>
<b>Grid 7 M4</b> <b>25.67 dBV/m</b>	<b>Grid 8 M4</b> <b>25.91 dBV/m</b>	<b>Grid 9 M4</b> <b>25.17 dBV/m</b>

**Cursor:**

Total = 27.30 dBV/m

E Category: M4

Location: -1.5, -25, 8.7 mm



### #07\_HAC\_E\_LTE Band 41\_20M\_QPSK\_1\_0\_Ch40670

Communication System: LTE-TDD (SC-FDMA, 1 RB, 20 MHz, QPSK); Frequency: 2598 MHz; Duty Cycle: 1:8.33681

Medium: Air Medium parameters used:  $\sigma = 0$  S/m,  $\epsilon_r = 1$ ;  $\rho = 0$  kg/m<sup>3</sup>

Ambient Temperature : 23.3 °C

DASY5 Configuration:

- Probe: EF3DV3 - SN4047; ConvF(1, 1, 1) @ 2598 MHz; Calibrated: 2019/1/30
- Sensor-Surface: (Fix Surface)
- Electronics: DAE4 Sn1326; Calibrated: 2018/9/18
- Phantom: HAC Test Arch with AMCC; Type: SD HAC P01 BA;
- Measurement SW: DASY52, Version 52.10 (1); SEMCAD X Version 14.6.11 (7439)

### E Scan - ER3D: 15 mm from Probe Center to the Device/Hearing Aid Compatibility Test (101x101x1): Interpolated grid: dx=0.5000 mm, dy=0.5000 mm

Device Reference Point: 0, 0, -6.3 mm

Reference Value = 6.092 V/m; Power Drift = 0.08 dB

Applied MIF = -1.62 dB

RF audio interference level = 19.32 dBV/m

**Emission category: M4**

MIF scaled E-field

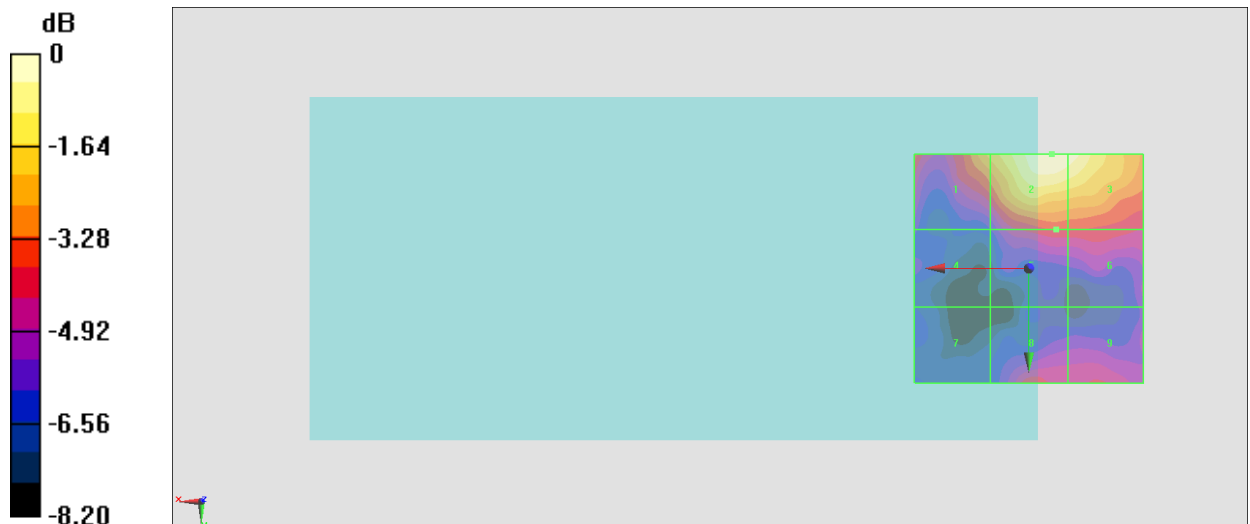
Grid 1 <b>M4</b> <b>17.38 dBV/m</b>	Grid 2 <b>M4</b> <b>19.32 dBV/m</b>	Grid 3 <b>M4</b> <b>19.11 dBV/m</b>
Grid 4 <b>M4</b> <b>13.59 dBV/m</b>	Grid 5 <b>M4</b> <b>15.54 dBV/m</b>	Grid 6 <b>M4</b> <b>15.47 dBV/m</b>
Grid 7 <b>M4</b> <b>13.32 dBV/m</b>	Grid 8 <b>M4</b> <b>15.49 dBV/m</b>	Grid 9 <b>M4</b> <b>15.05 dBV/m</b>

**Cursor:**

Total = 19.32 dBV/m

E Category: M4

Location: -5, -25, 8.7 mm



0 dB = 9.244 V/m = 19.32 dBV/m

**#08\_HAC\_E\_LTE Band 41\_20M\_QPSK\_1\_0\_Ch40140**

Communication System: 10172 - CAC, LTE-TDD (SC-FDMA, 1 RB, 20 MHz, QPSK); Frequency: 2545 MHz; Duty Cycle: 1:8.33681

Medium: Air Medium parameters used:  $\sigma = 0$  S/m,  $\epsilon_r = 1$ ;  $\rho = 0$  kg/m<sup>3</sup>

Ambient Temperature : 23.3 °C;

DASY5 Configuration:

- Probe: EF3DV3 - SN4047; ConvF(1, 1, 1) @ 2545 MHz; Calibrated: 2019/1/30
- Sensor-Surface: (Fix Surface)
- Electronics: DAE4 Sn1326; Calibrated: 2018/9/18
- Phantom: HAC Test Arch with AMCC; Type: SD HAC P01 BA;
- Measurement SW: DASY52, Version 52.10 (1); SEMCAD X Version 14.6.11 (7439)

**E Scan - ER3D: 15 mm from Probe Center to the Device/Hearing Aid Compatibility Test (101x101x1):** Interpolated grid: dx=0.5000 mm, dy=0.5000 mm

Device Reference Point: 0, 0, -6.3 mm

Reference Value = 5.711 V/m; Power Drift = -0.11 dB

Applied MIF = -1.62 dB

RF audio interference level = 17.96 dBV/m

**Emission category: M4**

MIF scaled E-field

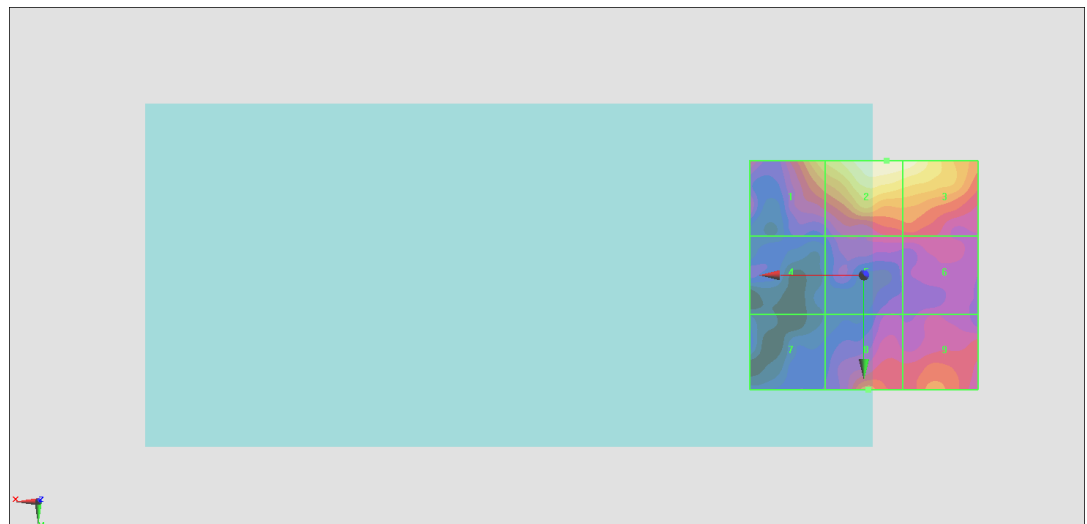
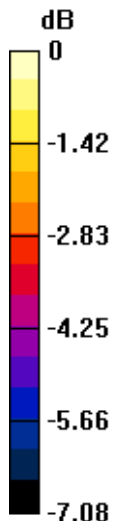
Grid 1 <b>M4</b> <b>16.66 dBV/m</b>	Grid 2 <b>M4</b> <b>17.96 dBV/m</b>	Grid 3 <b>M4</b> <b>17.9 dBV/m</b>
Grid 4 <b>M4</b> <b>13.01 dBV/m</b>	Grid 5 <b>M4</b> <b>14.27 dBV/m</b>	Grid 6 <b>M4</b> <b>14.37 dBV/m</b>
Grid 7 <b>M4</b> <b>12.89 dBV/m</b>	Grid 8 <b>M4</b> <b>15.5 dBV/m</b>	Grid 9 <b>M4</b> <b>15.3 dBV/m</b>

**Cursor:**

Total = 17.96 dBV/m

E Category: M4

Location: -5, -25, 8.7 mm



0 dB = 7.904 V/m = 17.96 dBV/m

### #09\_HAC\_E\_LTE Band 41\_20M\_QPSK\_1\_0\_Ch40400

Communication System: 10172 - CAC, LTE-TDD (SC-FDMA, 1 RB, 20 MHz, QPSK); Frequency: 2571 MHz; Duty Cycle: 1:8.33681

Medium: Air Medium parameters used:  $\sigma = 0$  S/m,  $\epsilon_r = 1$ ;  $\rho = 0$  kg/m<sup>3</sup>

Ambient Temperature : 23.3 °C

DASY5 Configuration:

- Probe: EF3DV3 - SN4047; ConvF(1, 1, 1) @ 2571 MHz; Calibrated: 2019/1/30
- Sensor-Surface: (Fix Surface)
- Electronics: DAE4 Sn1326; Calibrated: 2018/9/18
- Phantom: HAC Test Arch with AMCC; Type: SD HAC P01 BA;
- Measurement SW: DASY52, Version 52.10 (1); SEMCAD X Version 14.6.11 (7439)

### E Scan - ER3D: 15 mm from Probe Center to the Device/Hearing Aid Compatibility Test (101x101x1): Interpolated grid: dx=0.5000 mm, dy=0.5000 mm

Device Reference Point: 0, 0, -6.3 mm

Reference Value = 6.298 V/m; Power Drift = 0.14 dB

Applied MIF = -1.62 dB

RF audio interference level = 20.08 dBV/m

**Emission category: M4**

MIF scaled E-field

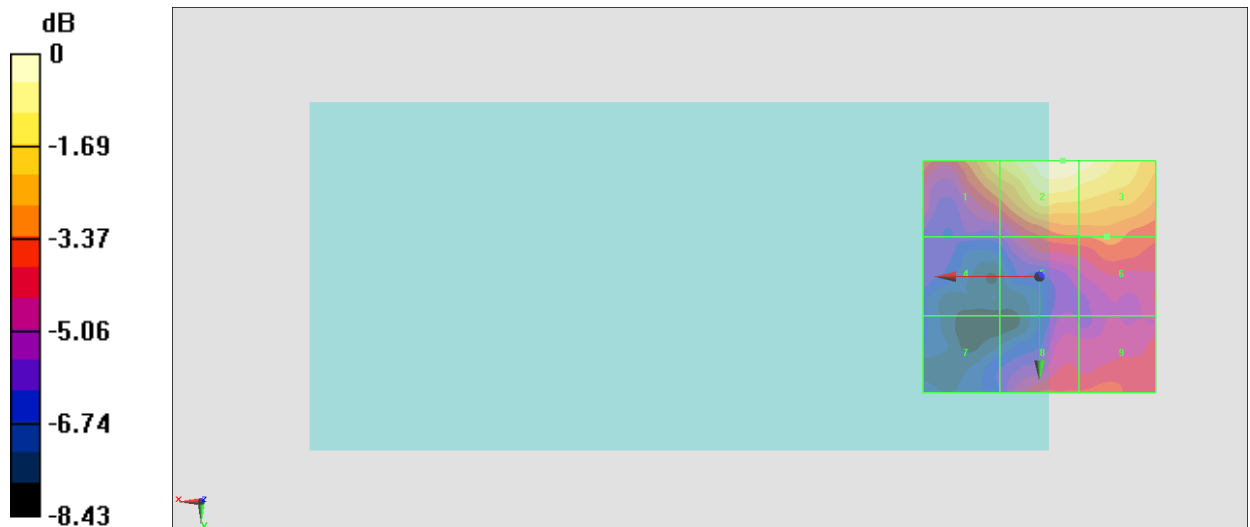
Grid 1 <b>M4</b> <b>18.64 dBV/m</b>	Grid 2 <b>M4</b> <b>20.08 dBV/m</b>	Grid 3 <b>M4</b> <b>19.92 dBV/m</b>
Grid 4 <b>M4</b> <b>14.42 dBV/m</b>	Grid 5 <b>M4</b> <b>16.64 dBV/m</b>	Grid 6 <b>M4</b> <b>16.89 dBV/m</b>
Grid 7 <b>M4</b> <b>14.09 dBV/m</b>	Grid 8 <b>M4</b> <b>16.35 dBV/m</b>	Grid 9 <b>M4</b> <b>16.74 dBV/m</b>

**Cursor:**

Total = 20.08 dBV/m

E Category: M4

Location: -5, -25, 8.7 mm



0 dB = 10.09 V/m = 20.08 dBV/m

### #10\_HAC\_E\_LTE Band 41\_20M\_QPSK\_1\_0\_Ch41140

Communication System: 10172 - CAC, LTE-TDD (SC-FDMA, 1 RB, 20 MHz, QPSK); Frequency: 2645 MHz; Duty Cycle: 1:8.33681

Medium: Air Medium parameters used:  $\sigma = 0$  S/m,  $\epsilon_r = 1$ ;  $\rho = 0$  kg/m<sup>3</sup>

Ambient Temperature : 23.3 °C

DASY5 Configuration:

- Probe: EF3DV3 - SN4047; ConvF(1, 1, 1) @ 2645 MHz; Calibrated: 2019/1/30
- Sensor-Surface: (Fix Surface)
- Electronics: DAE4 Sn1326; Calibrated: 2018/9/18
- Phantom: HAC Test Arch with AMCC; Type: SD HAC P01 BA;
- Measurement SW: DASY52, Version 52.10 (1); SEMCAD X Version 14.6.11 (7439)

### E Scan - ER3D: 15 mm from Probe Center to the Device/Hearing Aid Compatibility Test (101x101x1): Interpolated grid: dx=0.5000 mm, dy=0.5000 mm

Device Reference Point: 0, 0, -6.3 mm

Reference Value = 6.955 V/m; Power Drift = 0.11 dB

Applied MIF = -1.62 dB

RF audio interference level = 19.97 dBV/m

**Emission category: M4**

MIF scaled E-field

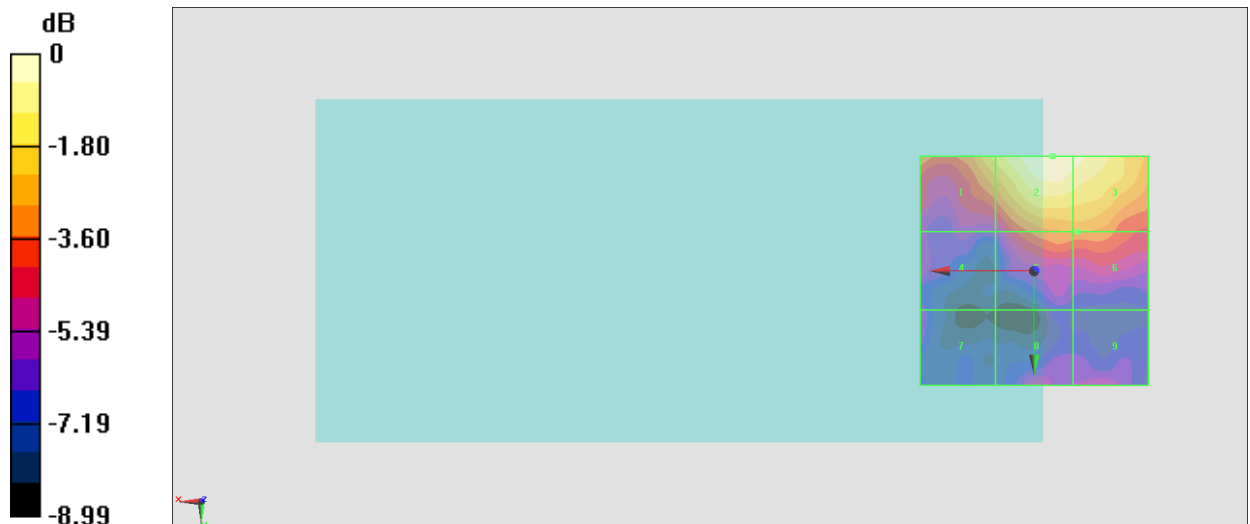
Grid 1 <b>M4</b> <b>18.46 dBV/m</b>	Grid 2 <b>M4</b> <b>19.97 dBV/m</b>	Grid 3 <b>M4</b> <b>19.67 dBV/m</b>
Grid 4 <b>M4</b> <b>14.54 dBV/m</b>	Grid 5 <b>M4</b> <b>16.98 dBV/m</b>	Grid 6 <b>M4</b> <b>16.99 dBV/m</b>
Grid 7 <b>M4</b> <b>14.27 dBV/m</b>	Grid 8 <b>M4</b> <b>14.95 dBV/m</b>	Grid 9 <b>M4</b> <b>14.64 dBV/m</b>

**Cursor:**

Total = 19.97 dBV/m

E Category: M4

Location: -4, -25, 8.7 mm



0 dB = 9.967 V/m = 19.97 dBV/m

### #11\_HAC\_E\_WLAN2.4GHz\_802.11g\_6Mbps\_Ch6

Communication System: 10077 - CAB, IEEE 802.11g WiFi 2.4 GHz (DSSS/OFDM, 54 Mbps); Frequency: 2437 MHz; Duty Cycle: 1:12.5893

Medium: Air Medium parameters used:  $\sigma = 0$  S/m,  $\epsilon_r = 1$ ;  $\rho = 0$  kg/m<sup>3</sup>

Ambient Temperature : 23.3 °C

DASY5 Configuration:

- Probe: EF3DV3 - SN4047; ConvF(1, 1, 1) @ 2437 MHz; Calibrated: 2019/1/30
- Sensor-Surface: (Fix Surface)
- Electronics: DAE4 Sn1326; Calibrated: 2018/9/18
- Phantom: HAC Test Arch with AMCC; Type: SD HAC P01 BA;
- Measurement SW: DASY52, Version 52.10 (1); SEMCAD X Version 14.6.11 (7439)

### E Scan - ER3D: 15 mm from Probe Center to the Device/Hearing Aid Compatibility Test (101x101x1): Interpolated grid: dx=0.5000 mm, dy=0.5000 mm

Device Reference Point: 0, 0, -6.3 mm

Reference Value = 3.237 V/m; Power Drift = 0.13 dB

Applied MIF = 0.12 dB

RF audio interference level = 12.34 dBV/m

**Emission category: M4**

MIF scaled E-field

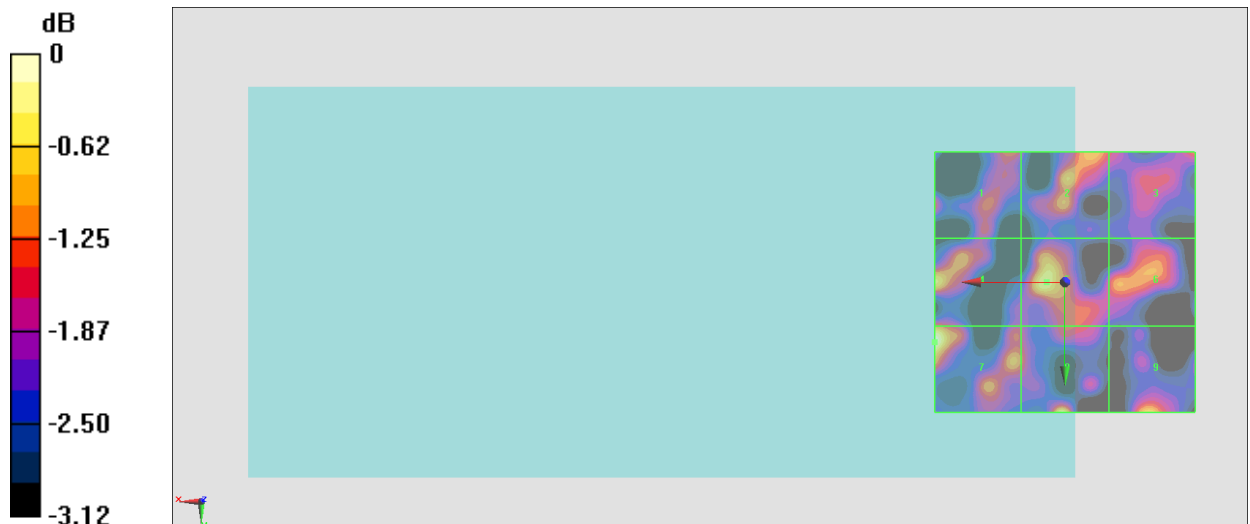
Grid 1 <b>M4</b> <b>11.11 dBV/m</b>	Grid 2 <b>M4</b> <b>11.54 dBV/m</b>	Grid 3 <b>M4</b> <b>11.19 dBV/m</b>
Grid 4 <b>M4</b> <b>11.76 dBV/m</b>	Grid 5 <b>M4</b> <b>11.96 dBV/m</b>	Grid 6 <b>M4</b> <b>11.35 dBV/m</b>
Grid 7 <b>M4</b> <b>12.34 dBV/m</b>	Grid 8 <b>M4</b> <b>12.12 dBV/m</b>	Grid 9 <b>M4</b> <b>11.8 dBV/m</b>

**Cursor:**

Total = 12.34 dBV/m

E Category: M4

Location: 25, 11.5, 8.7 mm



0 dB = 4.141 V/m = 12.34 dBV/m

### #12\_HAC\_E\_WLAN2.4GHz\_802.11g\_6Mbps\_Ch1

Communication System: 10077 - CAB, IEEE 802.11g WiFi 2.4 GHz (DSSS/OFDM, 54 Mbps); Frequency: 2412 MHz; Duty Cycle: 1:12.5893

Medium: Air Medium parameters used:  $\sigma = 0$  S/m,  $\epsilon_r = 1$ ;  $\rho = 0$  kg/m<sup>3</sup>

Ambient Temperature : 23.3 °C

DASY5 Configuration:

- Probe: EF3DV3 - SN4047; ConvF(1, 1, 1) @ 2412 MHz; Calibrated: 2019/1/30
- Sensor-Surface: (Fix Surface)
- Electronics: DAE4 Sn1326; Calibrated: 2018/9/18
- Phantom: HAC Test Arch with AMCC; Type: SD HAC P01 BA;
- Measurement SW: DASY52, Version 52.10 (1); SEMCAD X Version 14.6.11 (7439)

### E Scan - ER3D: 15 mm from Probe Center to the Device/Hearing Aid Compatibility Test (101x101x1): Interpolated grid: dx=0.5000 mm, dy=0.5000 mm

Device Reference Point: 0, 0, -6.3 mm

Reference Value = 3.496 V/m; Power Drift = 0.07 dB

Applied MIF = 0.12 dB

RF audio interference level = 12.16 dBV/m

**Emission category: M4**

MIF scaled E-field

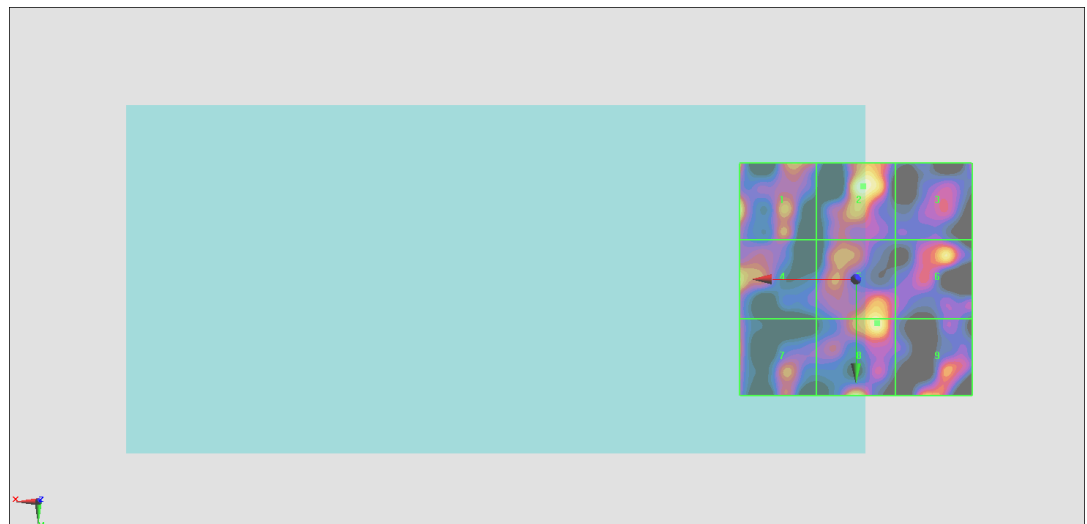
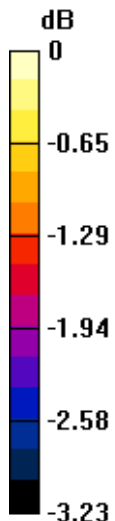
Grid 1 <b>M4</b> <b>11.94 dBV/m</b>	Grid 2 <b>M4</b> <b>12.16 dBV/m</b>	Grid 3 <b>M4</b> <b>10.53 dBV/m</b>
Grid 4 <b>M4</b> <b>11.58 dBV/m</b>	Grid 5 <b>M4</b> <b>11.88 dBV/m</b>	Grid 6 <b>M4</b> <b>11.77 dBV/m</b>
Grid 7 <b>M4</b> <b>11.02 dBV/m</b>	Grid 8 <b>M4</b> <b>12.01 dBV/m</b>	Grid 9 <b>M4</b> <b>11.26 dBV/m</b>

**Cursor:**

Total = 12.16 dBV/m

E Category: M4

Location: -1.5, -20, 8.7 mm



0 dB = 4.054 V/m = 12.16 dBV/m

### #13\_HAC\_E\_WLAN2.4GHz\_802.11g\_6Mbps\_Ch11

Communication System: 10077 - CAB, IEEE 802.11g WiFi 2.4 GHz (DSSS/OFDM, 54 Mbps); Frequency: 2462 MHz; Duty Cycle: 1:12.5893

Medium: Air Medium parameters used:  $\sigma = 0$  S/m,  $\epsilon_r = 1$ ;  $\rho = 0$  kg/m<sup>3</sup>

Ambient Temperature : 23.3 °C

DASY5 Configuration:

- Probe: EF3DV3 - SN4047; ConvF(1, 1, 1) @ 2462 MHz; Calibrated: 2019/1/30
- Sensor-Surface: (Fix Surface)
- Electronics: DAE4 Sn1326; Calibrated: 2018/9/18
- Phantom: HAC Test Arch with AMCC; Type: SD HAC P01 BA;
- Measurement SW: DASY52, Version 52.10 (1); SEMCAD X Version 14.6.11 (7439)

### E Scan - ER3D: 15 mm from Probe Center to the Device/Hearing Aid Compatibility Test (101x101x1): Interpolated grid: dx=0.5000 mm, dy=0.5000 mm

Device Reference Point: 0, 0, -6.3 mm

Reference Value = 3.519 V/m; Power Drift = 0.03 dB

Applied MIF = 0.12 dB

RF audio interference level = 12.97 dBV/m

**Emission category: M4**

MIF scaled E-field

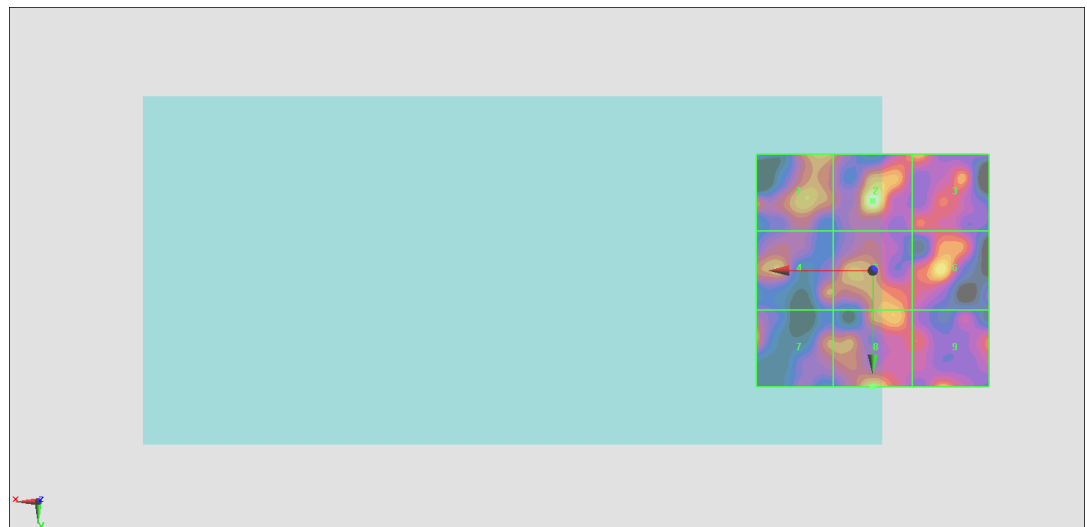
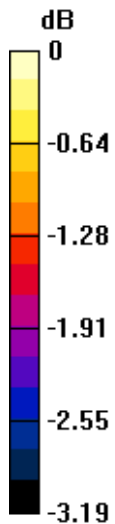
Grid 1 <b>M4</b> <b>12.13 dBV/m</b>	Grid 2 <b>M4</b> <b>12.97 dBV/m</b>	Grid 3 <b>M4</b> <b>11.94 dBV/m</b>
Grid 4 <b>M4</b> <b>11.96 dBV/m</b>	Grid 5 <b>M4</b> <b>12.09 dBV/m</b>	Grid 6 <b>M4</b> <b>12.52 dBV/m</b>
Grid 7 <b>M4</b> <b>11.83 dBV/m</b>	Grid 8 <b>M4</b> <b>12.39 dBV/m</b>	Grid 9 <b>M4</b> <b>11.93 dBV/m</b>

**Cursor:**

Total = 12.97 dBV/m

E Category: M4

Location: 0, -15, 8.7 mm



0 dB = 4.449 V/m = 12.97 dBV/m