

**#01\_GSM850\_GPRS (2 Tx slots)\_Right Cheek\_Ch128**

Communication System: GSM850; Frequency: 824.2 MHz; Duty Cycle: 1:4.15

Medium: HSL\_850\_190523 Medium parameters used:  $f = 824.2$  MHz;  $\sigma = 0.881$  S/m;  $\epsilon_r = 41.173$ ;  $\rho = 1000$  kg/m<sup>3</sup>

Ambient Temperature : 23.8 °C ; Liquid Temperature : 22.8 °C

DASY5 Configuration:

- Probe: EX3DV4 - SN3728; ConvF(9.36, 9.36, 9.36) ; Calibrated: 2019/1/15
- Sensor-Surface: 1.4mm (Mechanical Surface Detection)
- Electronics: DAE4 Sn853; Calibrated: 2018/7/24
- Phantom: SAM LEFT; Type: QD000P40CD; Serial: TP:1718
- Measurement SW: DASY52, Version 52.10 (1); SEMCAD X Version 14.6.11 (7439)

**Area Scan (61x121x1):** Interpolated grid: dx=1.500 mm, dy=1.500 mm

Maximum value of SAR (interpolated) = 0.319 W/kg

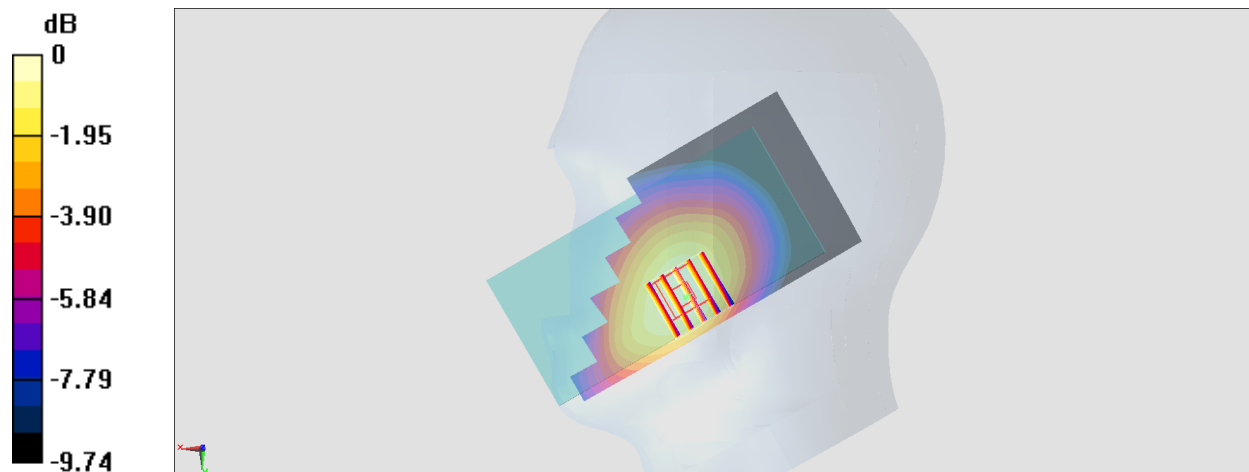
**Zoom Scan (5x5x7)/Cube 0:** Measurement grid: dx=8mm, dy=8mm, dz=5mm

Reference Value = 18.97 V/m; Power Drift = 0.11 dB

Peak SAR (extrapolated) = 0.343 W/kg

**SAR(1 g) = 0.257 W/kg; SAR(10 g) = 0.199 W/kg**

Maximum value of SAR (measured) = 0.307 W/kg



0 dB = 0.319 W/kg = -4.96 dBW/kg

**#02\_GSM1900\_GPRS (2 Tx slots)\_Left Cheek\_Ch661**

Communication System: PCS; Frequency: 1880 MHz; Duty Cycle: 1:4.15

Medium: HSL\_1900\_190523 Medium parameters used:  $f = 1880$  MHz;  $\sigma = 1.388$  S/m;  $\epsilon_r = 40.591$ ;  $\rho = 1000$  kg/m<sup>3</sup>

Ambient Temperature : 23.5 °C ; Liquid Temperature : 22.5 °C

DASY5 Configuration:

- Probe: EX3DV4 - SN3728; ConvF(7.7, 7.7, 7.7) ; Calibrated: 2019/1/15
- Sensor-Surface: 1.4mm (Mechanical Surface Detection)
- Electronics: DAE4 Sn853; Calibrated: 2018/7/24
- Phantom: SAM LEFT; Type: QD000P40CD; Serial: TP:1718
- Measurement SW: DASY52, Version 52.10 (1); SEMCAD X Version 14.6.11 (7439)

**Area Scan (71x121x1):** Interpolated grid: dx=1.500 mm, dy=1.500 mm

Maximum value of SAR (interpolated) = 0.128 W/kg

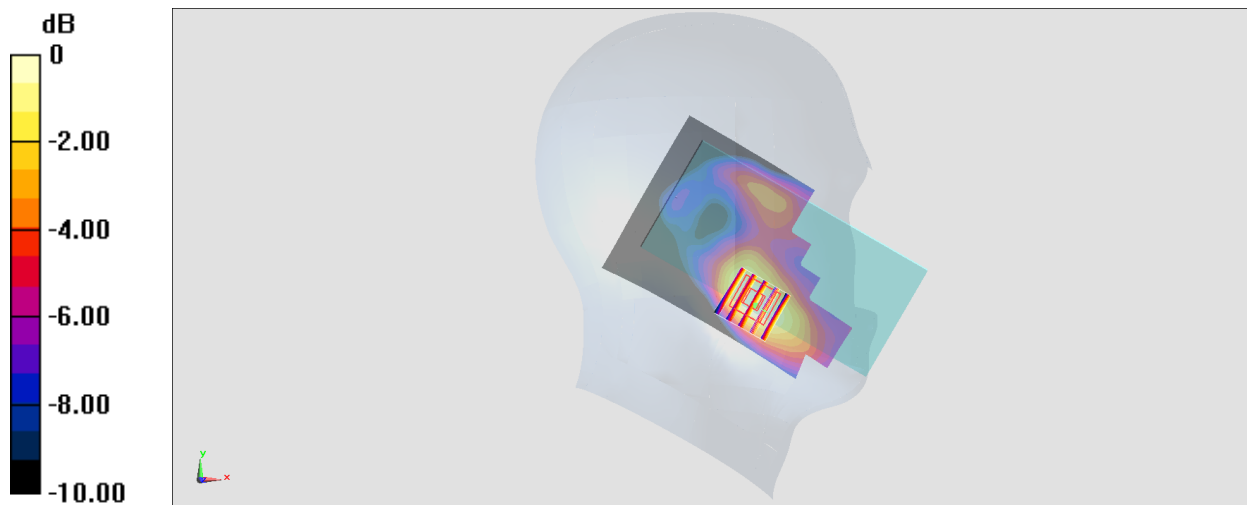
**Zoom Scan (5x5x7)/Cube 0:** Measurement grid: dx=8mm, dy=8mm, dz=5mm

Reference Value = 7.904 V/m; Power Drift = 0.17 dB

Peak SAR (extrapolated) = 0.150 W/kg

**SAR(1 g) = 0.096 W/kg; SAR(10 g) = 0.059 W/kg**

Maximum value of SAR (measured) = 0.130 W/kg



0 dB = 0.128 W/kg = -8.93 dBW/kg

**#03\_WCDMA II\_RMC 12.2Kbps\_Left Cheek\_Ch9538**

Communication System: WCDMA; Frequency: 1907.6 MHz; Duty Cycle: 1:1

Medium: HSL\_1900\_190523 Medium parameters used:  $f = 1908$  MHz;  $\sigma = 1.418$  S/m;  $\epsilon_r = 40.485$ ;  $\rho = 1000$  kg/m<sup>3</sup>

Ambient Temperature : 23.5 °C ; Liquid Temperature : 22.5 °C

DASY5 Configuration:

- Probe: EX3DV4 - SN3728; ConvF(7.7, 7.7, 7.7) ; Calibrated: 2019/1/15
- Sensor-Surface: 1.4mm (Mechanical Surface Detection)
- Electronics: DAE4 Sn853; Calibrated: 2018/7/24
- Phantom: SAM LEFT; Type: QD000P40CD; Serial: TP:1718
- Measurement SW: DASY52, Version 52.10 (1); SEMCAD X Version 14.6.11 (7439)

**Area Scan (71x121x1):** Interpolated grid: dx=1.500 mm, dy=1.500 mm

Maximum value of SAR (interpolated) = 0.217 W/kg

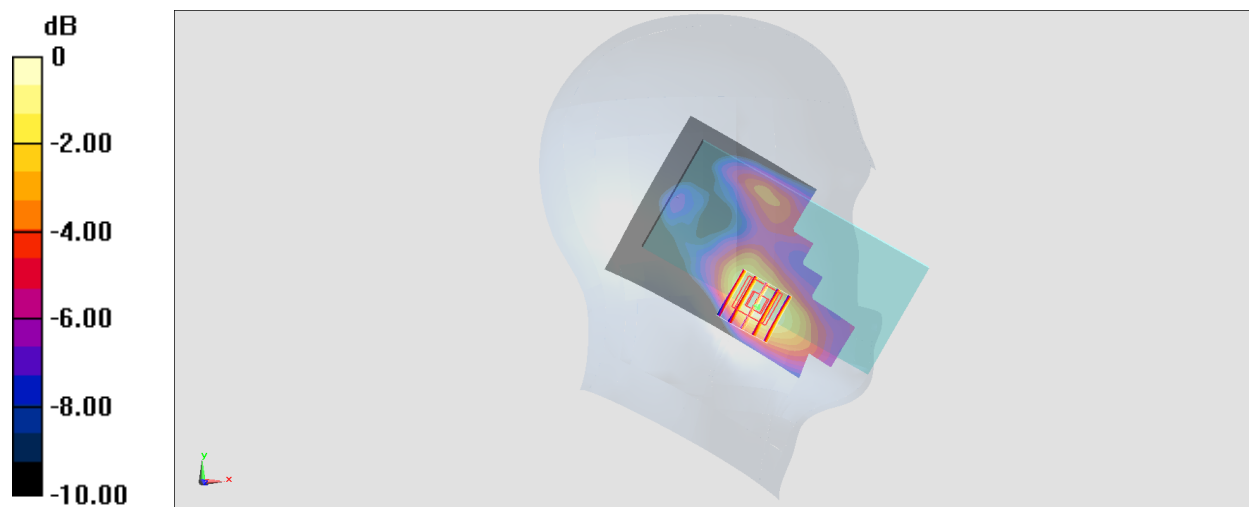
**Zoom Scan (5x5x7)/Cube 0:** Measurement grid: dx=8mm, dy=8mm, dz=5mm

Reference Value = 9.655 V/m; Power Drift = 0.10 dB

Peak SAR (extrapolated) = 0.245 W/kg

**SAR(1 g) = 0.154 W/kg; SAR(10 g) = 0.095 W/kg**

Maximum value of SAR (measured) = 0.208 W/kg



0 dB = 0.217 W/kg = -6.64 dBW/kg

**#04\_WCDMA IV\_RMC 12.2Kbps\_Left Cheek\_Ch1312**

Communication System: WCDMA; Frequency: 1712.4 MHz; Duty Cycle: 1:1

Medium: HSL\_1750\_190523 Medium parameters used:  $f = 1712.4$  MHz;  $\sigma = 1.336$  S/m;  $\epsilon_r = 41.364$ ;  $\rho = 1000$  kg/m<sup>3</sup>

Ambient Temperature : 23.5 °C ; Liquid Temperature : 22.5 °C

DASY5 Configuration:

- Probe: EX3DV4 - SN3728; ConvF(8.13, 8.13, 8.13); Calibrated: 2019/1/15
- Sensor-Surface: 1.4mm (Mechanical Surface Detection)
- Electronics: DAE4 Sn853; Calibrated: 2018/7/24
- Phantom: SAM LEFT; Type: QD000P40CD; Serial: TP:1718
- Measurement SW: DASY52, Version 52.10 (1); SEMCAD X Version 14.6.11 (7439)

**Area Scan (61x121x1):** Interpolated grid: dx=1.500 mm, dy=1.500 mm

Maximum value of SAR (interpolated) = 0.171 W/kg

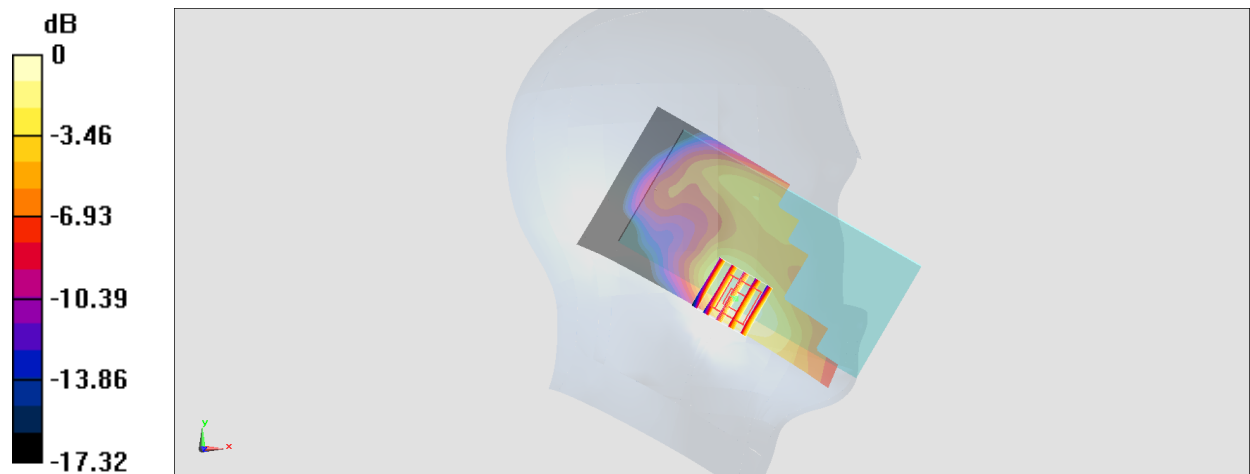
**Zoom Scan (5x5x7)/Cube 0:** Measurement grid: dx=8mm, dy=8mm, dz=5mm

Reference Value = 11.16 V/m; Power Drift = -0.06 dB

Peak SAR (extrapolated) = 0.181 W/kg

**SAR(1 g) = 0.122 W/kg; SAR(10 g) = 0.078 W/kg**

Maximum value of SAR (measured) = 0.160 W/kg



0 dB = 0.171 W/kg = -7.67 dBW/kg

**#05\_WCDMA V\_RMC 12.2Kbps\_Right Cheek\_Ch4132**

Communication System: WCDMA; Frequency: 826.4 MHz; Duty Cycle: 1:1

Medium: HSL\_850\_190523 Medium parameters used:  $f = 826.4$  MHz;  $\sigma = 0.883$  S/m;  $\epsilon_r = 41.146$ ;  $\rho = 1000$  kg/m<sup>3</sup>

Ambient Temperature : 23.8 °C ; Liquid Temperature : 22.8 °C

DASY5 Configuration:

- Probe: EX3DV4 - SN3728; ConvF(9.36, 9.36, 9.36) ; Calibrated: 2019/1/15
- Sensor-Surface: 1.4mm (Mechanical Surface Detection)
- Electronics: DAE4 Sn853; Calibrated: 2018/7/24
- Phantom: SAM LEFT; Type: QD000P40CD; Serial: TP:1718
- Measurement SW: DASY52, Version 52.10 (1); SEMCAD X Version 14.6.11 (7439)

**Area Scan (61x121x1):** Interpolated grid: dx=1.500 mm, dy=1.500 mm

Maximum value of SAR (interpolated) = 0.277 W/kg

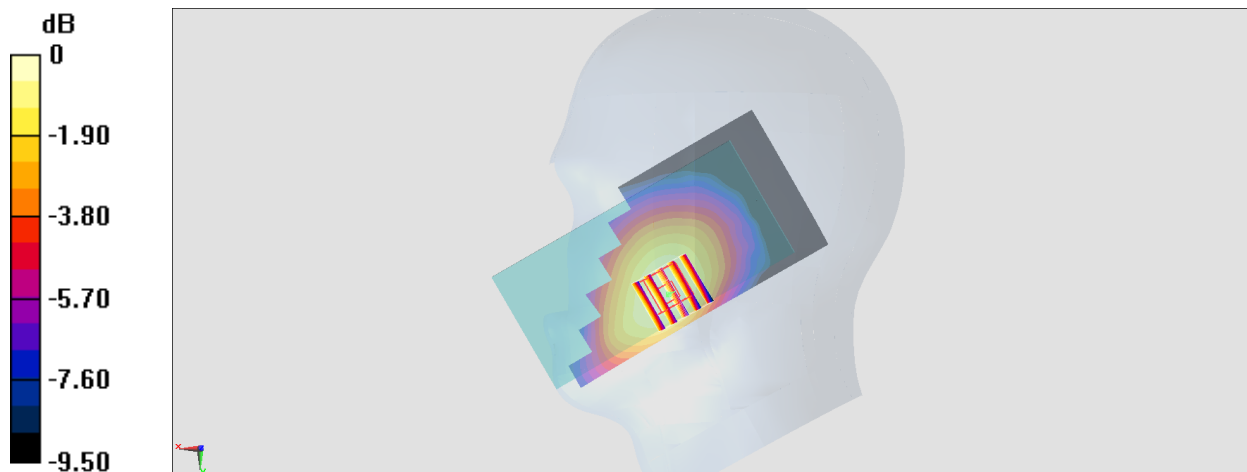
**Zoom Scan (5x5x7)/Cube 0:** Measurement grid: dx=8mm, dy=8mm, dz=5mm

Reference Value = 17.55 V/m; Power Drift = 0.14 dB

Peak SAR (extrapolated) = 0.301 W/kg

**SAR(1 g) = 0.227 W/kg; SAR(10 g) = 0.175 W/kg**

Maximum value of SAR (measured) = 0.275 W/kg



**#06\_LTE Band 2\_20M\_QPSK\_1\_0\_Left Cheek\_Ch18900**

Communication System: LTE; Frequency: 1880 MHz; Duty Cycle: 1:1

Medium: HSL\_1900\_190523 Medium parameters used:  $f = 1880$  MHz;  $\sigma = 1.388$  S/m;  $\epsilon_r = 40.591$ ;  $\rho = 1000$  kg/m<sup>3</sup>

Ambient Temperature : 23.5 °C ; Liquid Temperature : 22.5 °C

DASY5 Configuration:

- Probe: EX3DV4 - SN3728; ConvF(7.7, 7.7, 7.7) ; Calibrated: 2019/1/15
- Sensor-Surface: 1.4mm (Mechanical Surface Detection)
- Electronics: DAE4 Sn853; Calibrated: 2018/7/24
- Phantom: SAM LEFT; Type: QD000P40CD; Serial: TP:1718
- Measurement SW: DASY52, Version 52.10 (1); SEMCAD X Version 14.6.11 (7439)

**Area Scan (71x121x1):** Interpolated grid: dx=1.500 mm, dy=1.500 mm

Maximum value of SAR (interpolated) = 0.194 W/kg

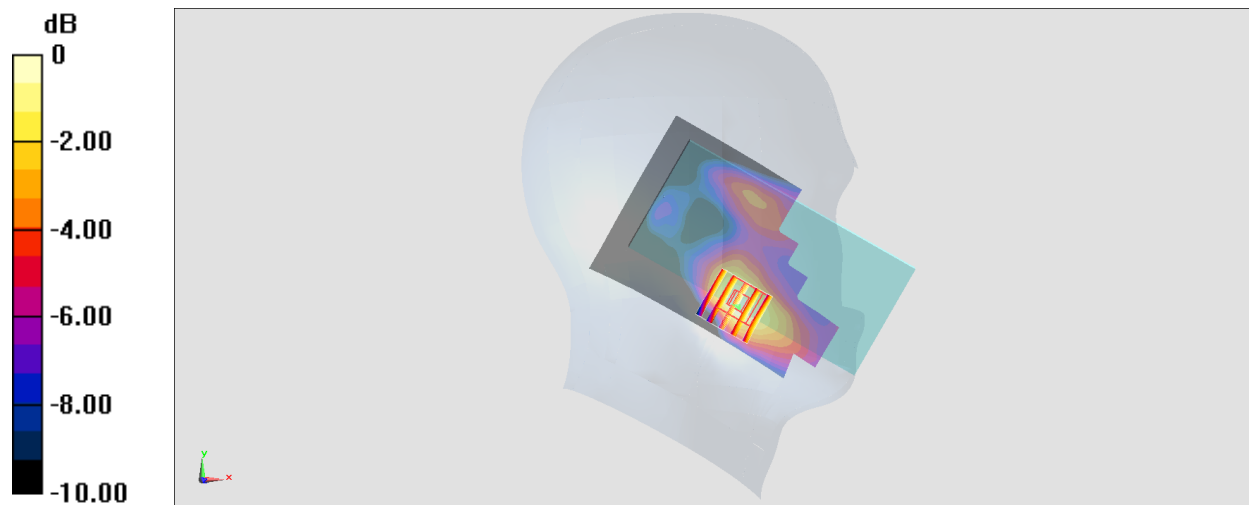
**Zoom Scan (5x5x7)/Cube 0:** Measurement grid: dx=8mm, dy=8mm, dz=5mm

Reference Value = 8.021 V/m; Power Drift = 0.07 dB

Peak SAR (extrapolated) = 0.204 W/kg

**SAR(1 g) = 0.129 W/kg; SAR(10 g) = 0.079 W/kg**

Maximum value of SAR (measured) = 0.173 W/kg



**#07\_LTE Band 5\_10M\_QPSK\_1\_0\_Right Cheek\_Ch20525**

Communication System: LTE; Frequency: 836.5 MHz; Duty Cycle: 1:1

Medium: HSL\_850\_190522 Medium parameters used :  $f = 836.5$  MHz;  $\sigma = 0.894$  S/m;  $\epsilon_r = 42.254$ ;  $\rho = 1000$  kg/m<sup>3</sup>

Ambient Temperature : 23.5 °C ; Liquid Temperature : 22.5 °C

**DASY5 Configuration**

- Probe: ES3DV3 - SN3270; ConvF(6.39, 6.39, 6.39) ; Calibrated: 2018/9/24
- Sensor-Surface: 3mm (Mechanical Surface Detection)
- Electronics: DAE4 Sn699; Calibrated: 2019/1/3
- Phantom: SAM\_Left; Type: QD000P40CD; Serial: S/N:1801
- Measurement SW: DASY52, Version 52.10 (1); SEMCAD X Version 14.6.11 (7439)

**Area Scan (61x131x1):** Interpolated grid: dx=1.500 mm, dy=1.500 mm

Maximum value of SAR (interpolated) = 0.230 W/kg

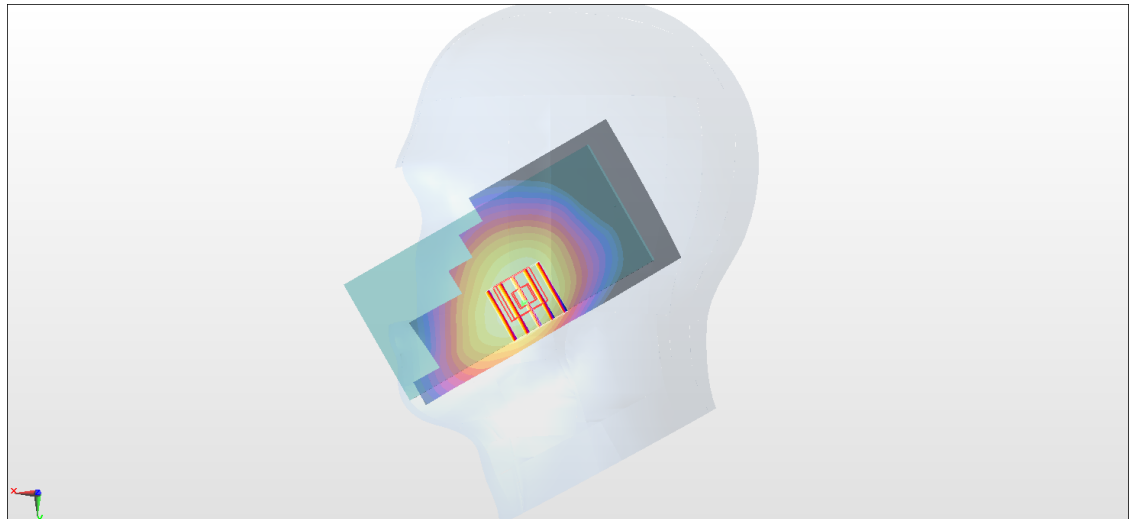
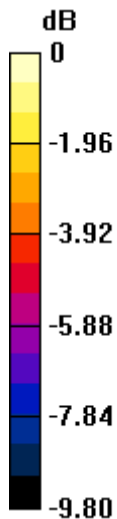
**Zoom Scan (5x5x7)/Cube 0:** Measurement grid: dx=8mm, dy=8mm, dz=5mm

Reference Value = 15.94 V/m; Power Drift = 0.04 dB

Peak SAR (extrapolated) = 0.260 W/kg

**SAR(1 g) = 0.206 W/kg; SAR(10 g) = 0.159 W/kg**

Maximum value of SAR (measured) = 0.224 W/kg



**#08\_LTE Band 7\_20M\_QPSK\_1\_0\_Left Cheek\_Ch21100**

Communication System: LTE; Frequency: 2535 MHz; Duty Cycle: 1:1

Medium: HSL\_2600\_190524 Medium parameters used :  $f = 2535$  MHz;  $\sigma = 1.949$  S/m;  $\epsilon_r = 39.87$ ;  $\rho = 1000$  kg/m<sup>3</sup>

Ambient Temperature : 23.7 °C ; Liquid Temperature : 22.7 °C

DASY5 Configuration:

- Probe: EX3DV4 - SN3728; ConvF(6.94, 6.94, 6.94) ; Calibrated: 2019/1/15
- Sensor-Surface: 1.4mm (Mechanical Surface Detection)
- Electronics: DAE4 Sn853; Calibrated: 2018/7/24
- Phantom: SAM LEFT; Type: QD000P40CD; Serial: TP:1718
- Measurement SW: DASY52, Version 52.10 (1); SEMCAD X Version 14.6.11 (7439)

**Area Scan (91x151x1):** Interpolated grid: dx=1.200 mm, dy=1.200 mm

Maximum value of SAR (interpolated) = 0.571 W/kg

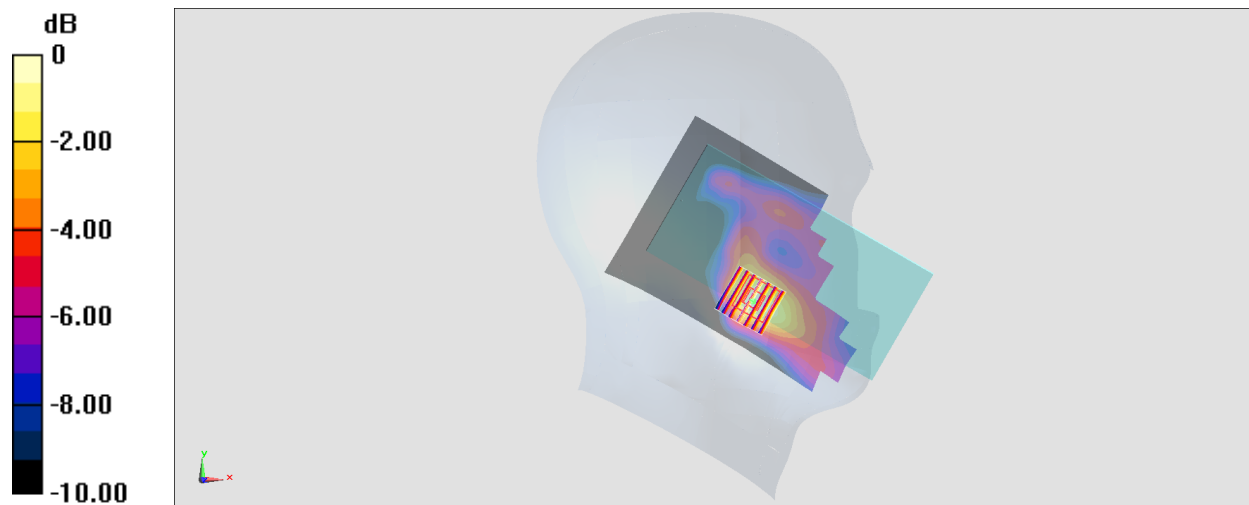
**Zoom Scan (7x7x7)/Cube 0:** Measurement grid: dx=5mm, dy=5mm, dz=5mm

Reference Value = 13.08 V/m; Power Drift = -0.01 dB

Peak SAR (extrapolated) = 0.600 W/kg

**SAR(1 g) = 0.345 W/kg; SAR(10 g) = 0.190 W/kg**

Maximum value of SAR (measured) = 0.503 W/kg



0 dB = 0.571 W/kg = -2.43 dBW/kg

**#09\_LTE Band 12\_10M\_QPSK\_1\_0\_Right Cheek\_Ch23095**

Communication System: LTE; Frequency: 707.5 MHz; Duty Cycle: 1:1

Medium: HSL\_750\_190519 Medium parameters used:  $f = 707.5$  MHz;  $\sigma = 0.853$  S/m;  $\epsilon_r = 41.036$ ;  $\rho = 1000$  kg/m<sup>3</sup>

Ambient Temperature : 23.7 °C; Liquid Temperature : 22.7 °C

DASY5 Configuration:

- Probe: EX3DV4 - SN3642; ConvF(9.16, 9.16, 9.16) ; Calibrated: 2019/4/29
- Sensor-Surface: 1.4mm (Mechanical Surface Detection)
- Electronics: DAE4 Sn699; Calibrated: 2019/1/3
- Phantom: SAM\_Left; Type: QD000P40CD; Serial: TP:1815
- Measurement SW: DASY52, Version 52.10 (1); SEMCAD X Version 14.6.11 (7439)

**Area Scan (61x121x1):** Interpolated grid: dx=1.500 mm, dy=1.500 mm

Maximum value of SAR (interpolated) = 0.176 W/kg

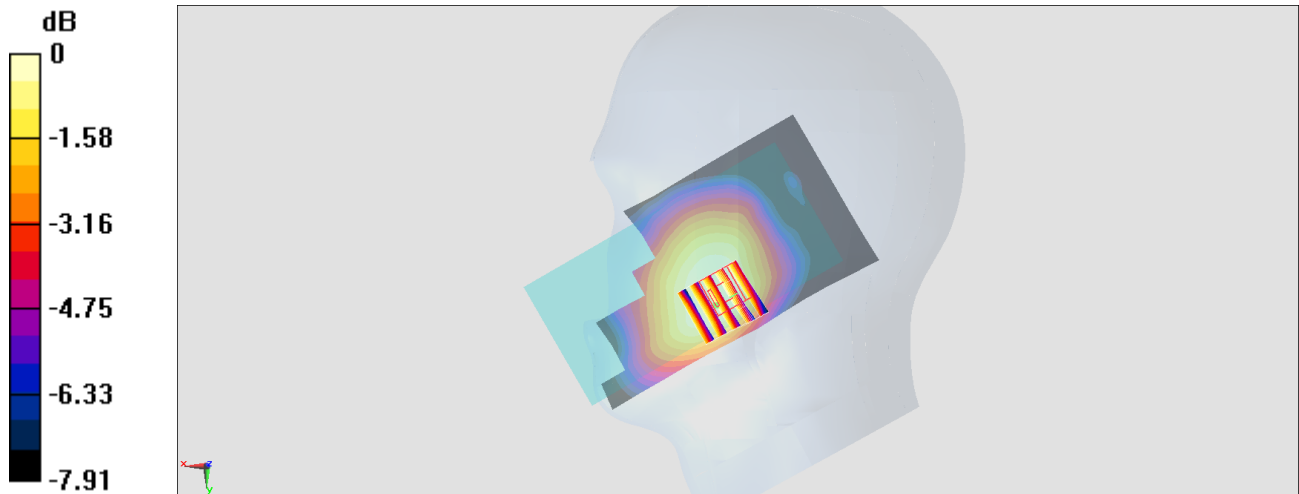
**Zoom Scan (5x5x7)/Cube 0:** Measurement grid: dx=8mm, dy=8mm, dz=5mm

Reference Value = 14.67 V/m; Power Drift = -0.11 dB

Peak SAR (extrapolated) = 0.171 W/kg

**SAR(1 g) = 0.145 W/kg; SAR(10 g) = 0.118 W/kg**

Maximum value of SAR (measured) = 0.162 W/kg



0 dB = 0.162 W/kg = -7.90 dBW/kg

**#10\_LTE Band 66\_20M\_QPSK\_1\_0\_Left Cheek\_Ch132322**

Communication System: LTE; Frequency: 1745 MHz; Duty Cycle: 1:1

Medium: HSL\_1750\_190523 Medium parameters used :  $f = 1745$  MHz;  $\sigma = 1.362$  S/m;  $\epsilon_r = 41.25$ ;  $\rho = 1000$  kg/m<sup>3</sup>

Ambient Temperature : 23.5 °C ; Liquid Temperature : 22.5 °C

DASY5 Configuration:

- Probe: EX3DV4 - SN3728; ConvF(8.13, 8.13, 8.13) ; Calibrated: 2019/1/15
- Sensor-Surface: 1.4mm (Mechanical Surface Detection)
- Electronics: DAE4 Sn853; Calibrated: 2018/7/24
- Phantom: SAM LEFT; Type: QD000P40CD; Serial: TP:1718
- Measurement SW: DASY52, Version 52.10 (1); SEMCAD X Version 14.6.11 (7439)

**Area Scan (71x121x1):** Interpolated grid: dx=1.500 mm, dy=1.500 mm

Maximum value of SAR (interpolated) = 0.123 W/kg

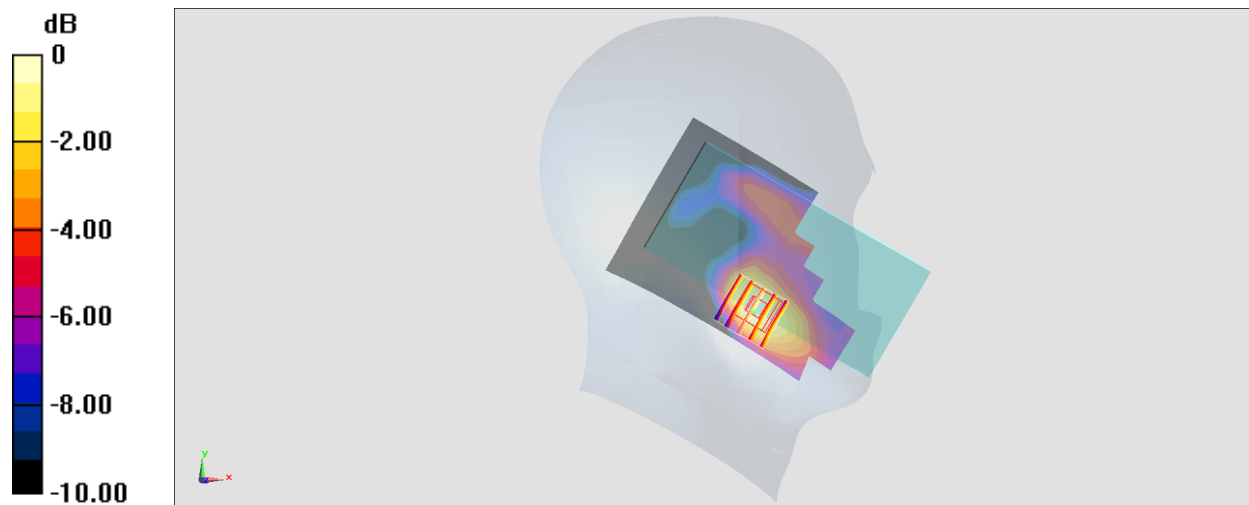
**Zoom Scan (5x5x7)/Cube 0:** Measurement grid: dx=8mm, dy=8mm, dz=5mm

Reference Value = 7.137 V/m; Power Drift = 0.03 dB

Peak SAR (extrapolated) = 0.133 W/kg

**SAR(1 g) = 0.086 W/kg; SAR(10 g) = 0.053 W/kg**

Maximum value of SAR (measured) = 0.115 W/kg



0 dB = 0.123 W/kg = -9.10 dBW/kg

**#11\_LTE Band 41\_20M\_QPSK\_1\_0\_Left Cheek\_Ch40670**

Communication System: LTE TDD ; Frequency: 2598 MHz; Duty Cycle: 1:1.59

Medium: HSL\_2600\_190530 Medium parameters used:  $f = 2598$  MHz;  $\sigma = 2.013$  S/m;  $\epsilon_r = 39.447$ ;  $\rho = 1000$  kg/m<sup>3</sup>

Ambient Temperature : 23.4 °C ; Liquid Temperature : 22.4 °C

DASY5 Configuration:

- Probe: EX3DV4 - SN7350; ConvF(7.35, 7.35, 7.35) ; Calibrated: 2018/12/14
- Sensor-Surface: 1.4mm (Mechanical Surface Detection)
- Electronics: DAE3 Sn360; Calibrated: 2018/10/29
- Phantom: SAM LEFT; Type: QD000P40CD; Serial: TP:1718
- Measurement SW: DASY52, Version 52.10 (1); SEMCAD X Version 14.6.11 (7439)

**Area Scan (81x151x1):** Interpolated grid: dx=1.200 mm, dy=1.200 mm

Maximum value of SAR (interpolated) = 0.323 W/kg

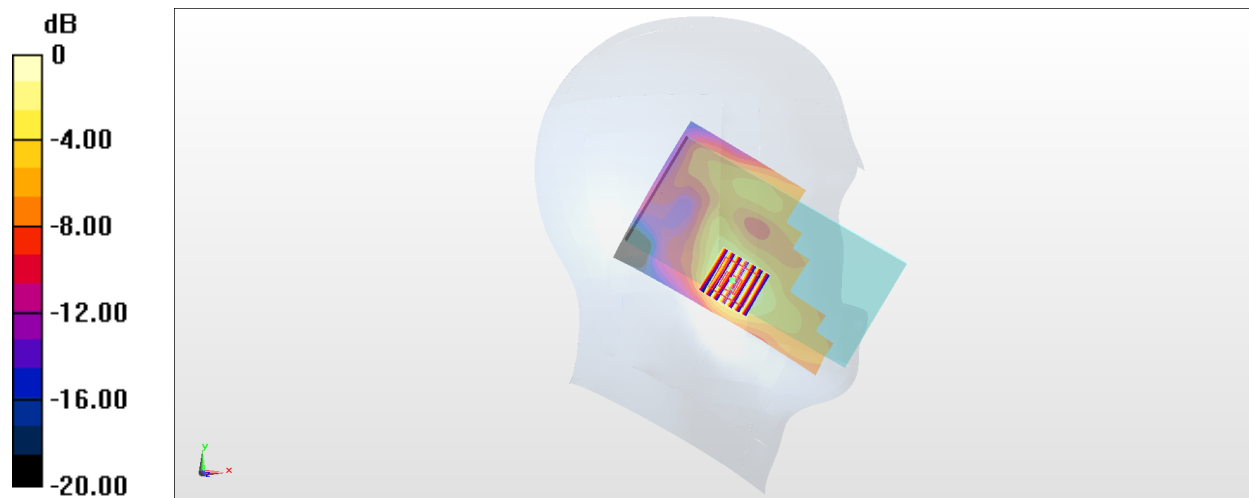
**Zoom Scan (7x7x7)/Cube 0:** Measurement grid: dx=5mm, dy=5mm, dz=5mm

Reference Value = 10.61 V/m; Power Drift = -0.10 dB

Peak SAR (extrapolated) = 0.407 W/kg

**SAR(1 g) = 0.203 W/kg; SAR(10 g) = 0.107 W/kg**

Maximum value of SAR (measured) = 0.325 W/kg



0 dB = 0.323 W/kg = -4.91 dBW/kg

### #12\_WLAN2.4GHz\_802.11b 1Mbps\_Left Cheek\_Ch1

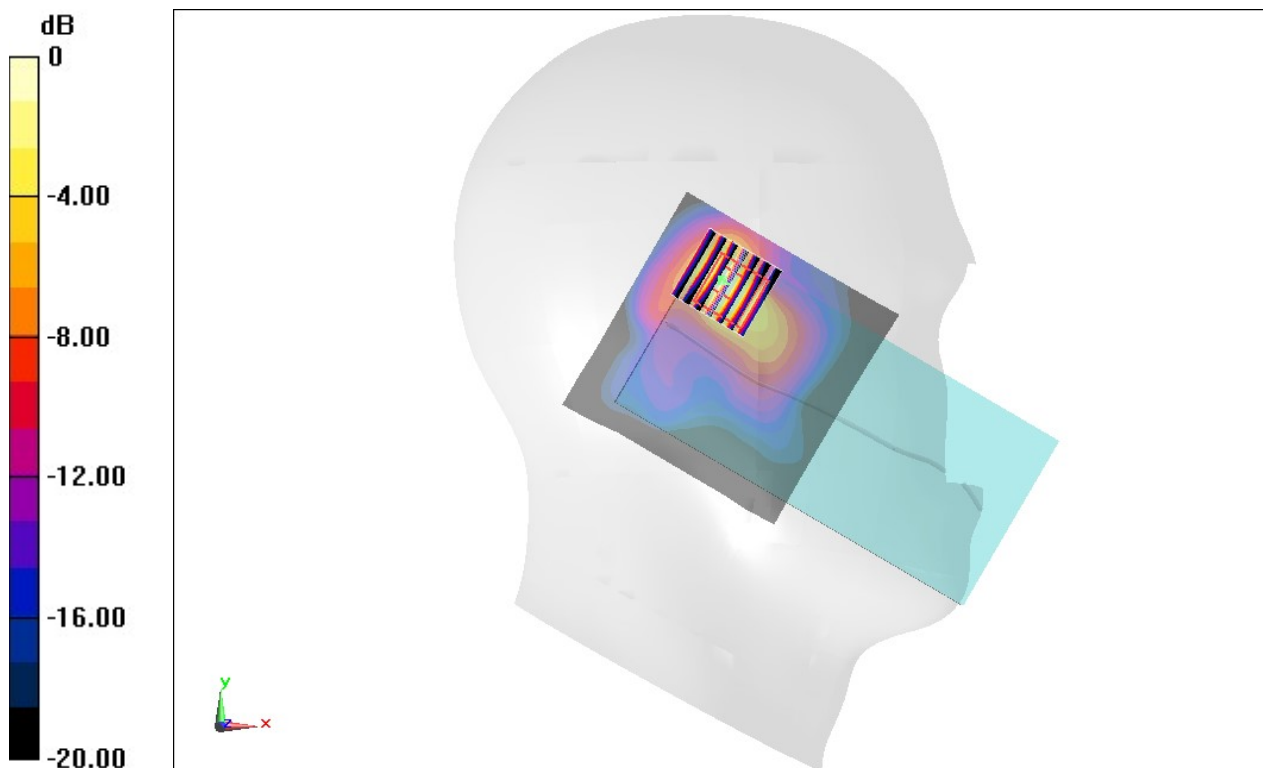
Communication System: 802.11b; Frequency: 2412 MHz; Duty Cycle: 1:1.012  
Medium: HSL\_2450\_190518 Medium parameters used:  $f = 2412$  MHz;  $\sigma = 1.749$  S/m;  $\epsilon_r = 40.027$ ;  
 $\rho = 1000$  kg/m<sup>3</sup>  
Ambient Temperature : 23.4 °C ; Liquid Temperature : 22.4 °C

#### DASY5 Configuration

- Probe: EX3DV4 - SN7306; ConvF(7.43, 7.43, 7.43) ; Calibrated: 2018/7/26
- Sensor-Surface: 1.4mm (Mechanical Surface Detection)
- Electronics: DAE3 Sn360; Calibrated: 2018/10/29
- Phantom: Twin-SAM V5.0 (30deg probe tilt); Type: QD 000 P40 CD; Serial: 1885
- Measurement SW: DASY52, Version 52.10 (2); SEMCAD X Version 14.6.12 (7450)

**Area Scan (81x81x1):** Interpolated grid: dx=1.200 mm, dy=1.200 mm  
Maximum value of SAR (interpolated) = 1.68 W/kg

**Zoom Scan (7x7x7)/Cube 0:** Measurement grid: dx=5mm, dy=5mm, dz=5mm  
Reference Value = 22.53 V/m; Power Drift = -0.15 dB  
Peak SAR (extrapolated) = 2.50 W/kg  
**SAR(1 g) = 1.16 W/kg; SAR(10 g) = 0.479 W/kg**  
Maximum value of SAR (measured) = 1.90 W/kg



0 dB = 1.90 W/kg = 2.79 dBW/kg

### #13\_WLAN5GHz\_802.11a 6Mbps\_Left Cheek\_Ch52

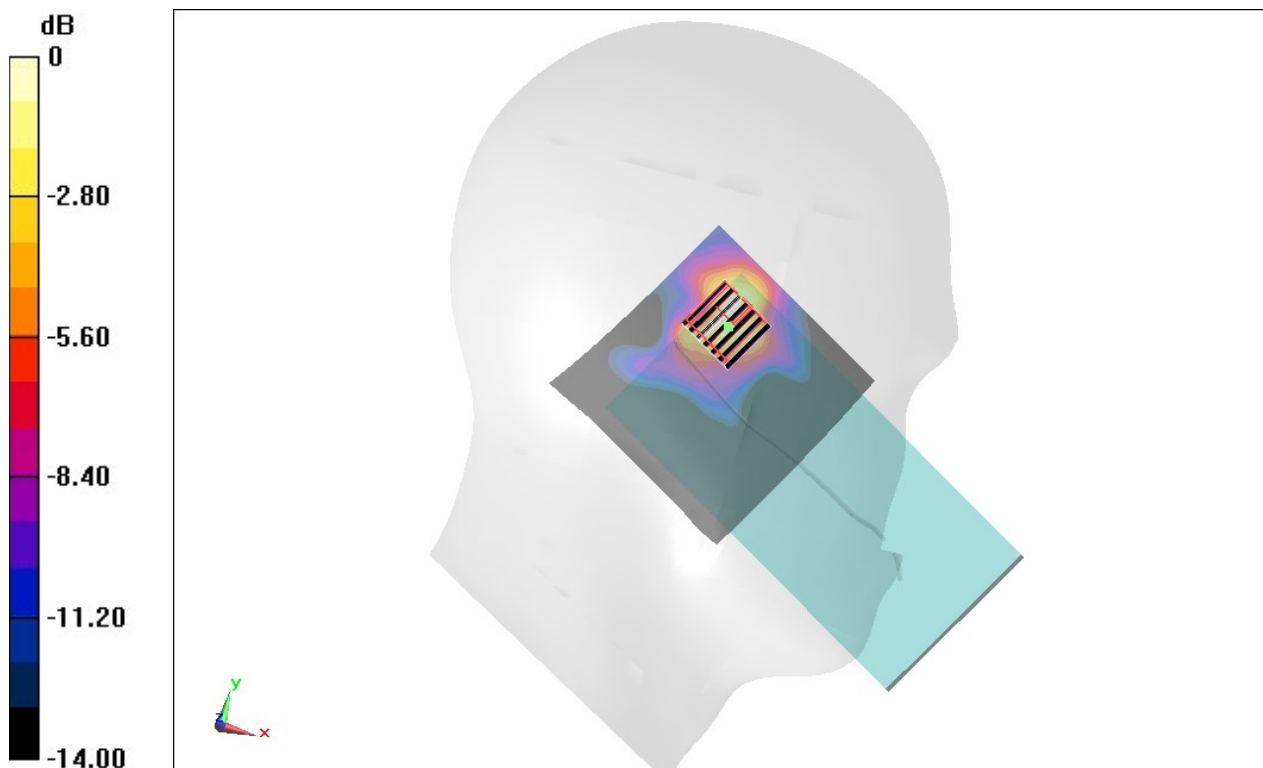
Communication System: 802.11a ; Frequency: 5260 MHz;Duty Cycle: 1:1.019  
Medium: HSL\_5G\_190518 Medium parameters used:  $f = 5260$  MHz;  $\sigma = 4.642$  S/m;  $\epsilon_r = 36.141$ ;  $\rho = 1000$  kg/m<sup>3</sup>  
Ambient Temperature : 23.4 °C ; Liquid Temperature : 22.4 °C

#### DASY5 Configuration

- Probe: EX3DV4 - SN7306;ConvF(5.38, 5.38, 5.38) ;Calibrated: 2018/7/26
- Sensor-Surface: 1.4mm (Mechanical Surface Detection)
- Electronics: DAE3 Sn360; Calibrated: 2018/10/29
- Phantom: Twin-SAM V5.0 (30deg probe tilt); Type: QD 000 P40 CD; Serial: 1885
- Measurement SW: DASY52, Version 52.10 (2); SEMCAD X Version 14.6.12 (7450)

**Area Scan (91x91x1):** Interpolated grid: dx=1.000 mm, dy=1.000 mm  
Maximum value of SAR (interpolated) = 1.14 W/kg

**Zoom Scan (7x7x7)/Cube 0:** Measurement grid: dx=4mm, dy=4mm, dz=1.4mm  
Reference Value = 10.78 V/m; Power Drift = 0.10 dB  
Peak SAR (extrapolated) = 2.08 W/kg  
**SAR(1 g) = 0.529 W/kg; SAR(10 g) = 0.197 W/kg**  
Maximum value of SAR (measured) = 1.25 W/kg



0 dB = 1.25 W/kg = 0.97 dBW/kg

**#14\_WLAN5GHz\_802.11a 6Mbps\_Left Cheek\_Ch116**

Communication System: 802.11a ; Frequency: 5580 MHz;Duty Cycle: 1:1.019

Medium: HSL\_5G\_190521 Medium parameters used:  $f = 5580$  MHz;  $\sigma = 4.87$  S/m;  $\epsilon_r = 36.234$ ;  $\rho = 1000$  kg/m<sup>3</sup>

Ambient Temperature : 23.5 °C ; Liquid Temperature : 22.5 °C

**DASY5 Configuration**

- Probe: EX3DV4 - SN3642;ConvF(4.28, 4.28, 4.28) ;Calibrated: 2019/4/29
- Sensor-Surface: 1.4mm (Mechanical Surface Detection)
- Electronics: DAE4 Sn914; Calibrated: 2018/12/11
- Phantom: SAM\_Left; Type: QD000P40CD; Serial: S/N:1801
- Measurement SW: DASY52, Version 52.10 (1); SEMCAD X Version 14.6.11 (7439)

**Area Scan (101x181x1):** Interpolated grid: dx=1.000 mm, dy=1.000 mm

Maximum value of SAR (interpolated) = 1.38 W/kg

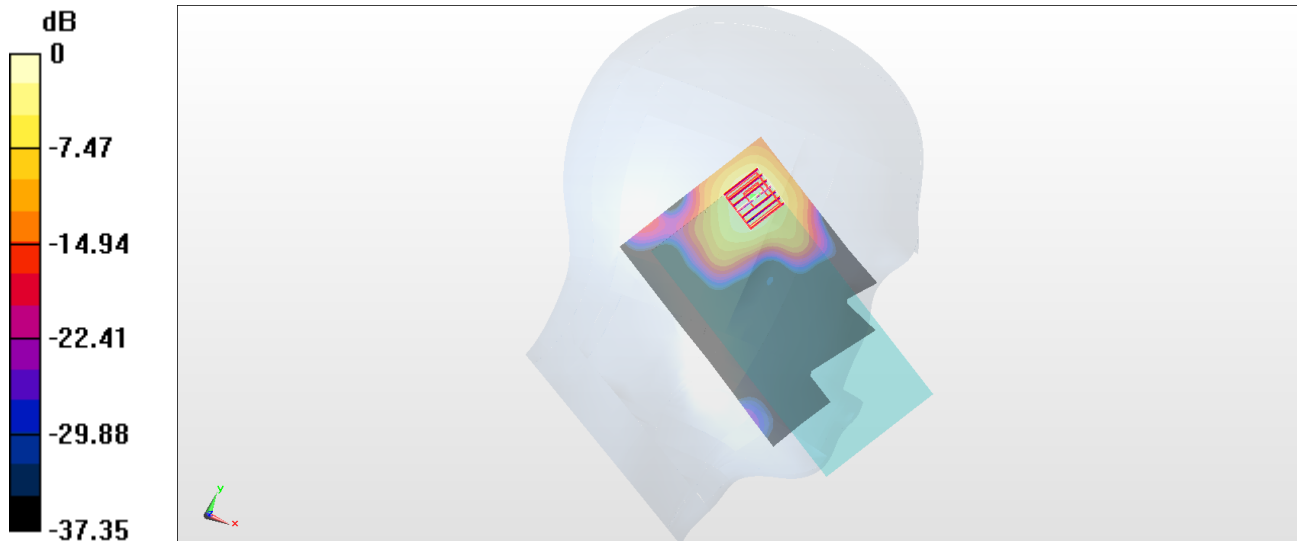
**Zoom Scan (7x7x7)/Cube 0:** Measurement grid: dx=4mm, dy=4mm, dz=1.4mm

Reference Value = 14.26 V/m; Power Drift = 0.08 dB

Peak SAR (extrapolated) = 2.63 W/kg

**SAR(1 g) = 0.525 W/kg; SAR(10 g) = 0.154 W/kg**

Maximum value of SAR (measured) = 1.54 W/kg



0 dB = 1.54 W/kg = 1.88 dBW/kg

**#15\_WLAN5GHz\_802.11a 6Mbps\_Left Cheek\_Ch165**

Communication System: 802.11a ; Frequency: 5825 MHz;Duty Cycle: 1:1.019

Medium: HSL\_5G\_190521 Medium parameters used :  $f = 5825$  MHz;  $\sigma = 5.131$  S/m;  $\epsilon_r = 35.92$ ;  $\rho = 1000$  kg/m<sup>3</sup>

Ambient Temperature : 23.5 °C ; Liquid Temperature : 22.5 °C

**DASY5 Configuration**

- Probe: EX3DV4 - SN3642;ConvF(4.36, 4.36, 4.36) ;Calibrated: 2019/4/29
- Sensor-Surface: 1.4mm (Mechanical Surface Detection)
- Electronics: DAE4 Sn914; Calibrated: 2018/12/11
- Phantom: SAM\_Left; Type: QD000P40CD; Serial: S/N:1801
- Measurement SW: DASY52, Version 52.10 (1); SEMCAD X Version 14.6.11 (7439)

**Area Scan (101x181x1):** Interpolated grid: dx=1.000 mm, dy=1.000 mm

Maximum value of SAR (interpolated) = 3.36 W/kg

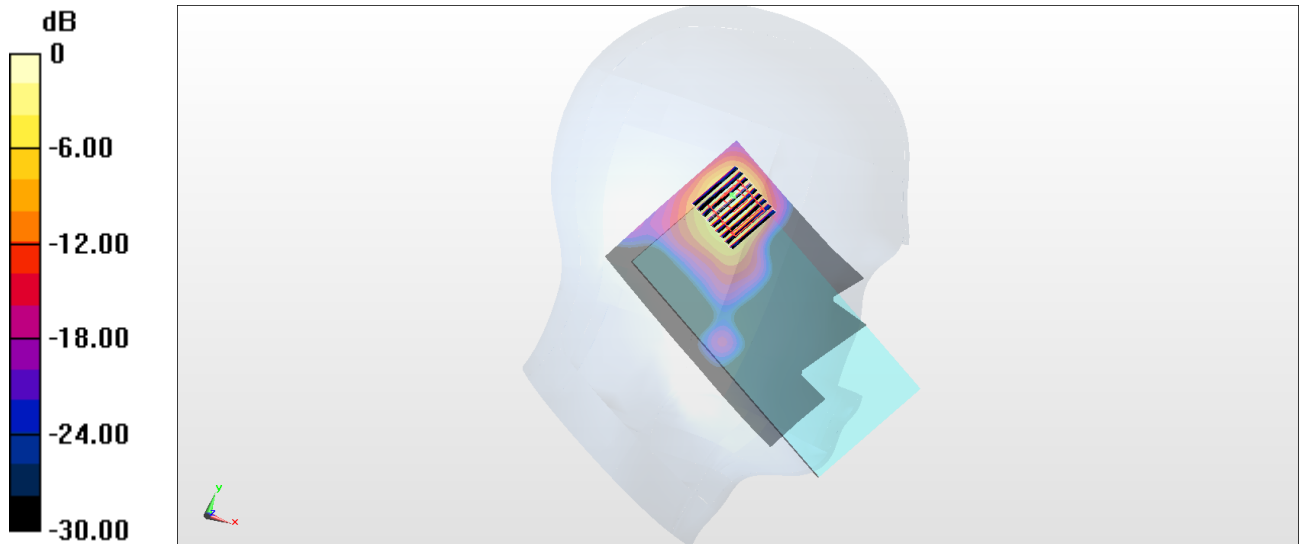
**Zoom Scan (9x9x7)/Cube 0:** Measurement grid: dx=4mm, dy=4mm, dz=1.4mm

Reference Value = 15.56 V/m; Power Drift = 0.03 dB

Peak SAR (extrapolated) = 5.53 W/kg

**SAR(1 g) = 1.19 W/kg; SAR(10 g) = 0.312 W/kg**

Maximum value of SAR (measured) = 3.35 W/kg



0 dB = 3.35 W/kg = 5.25 dBW/kg

### #16\_Bluetooth\_1Mbps\_Left Cheek\_Ch0

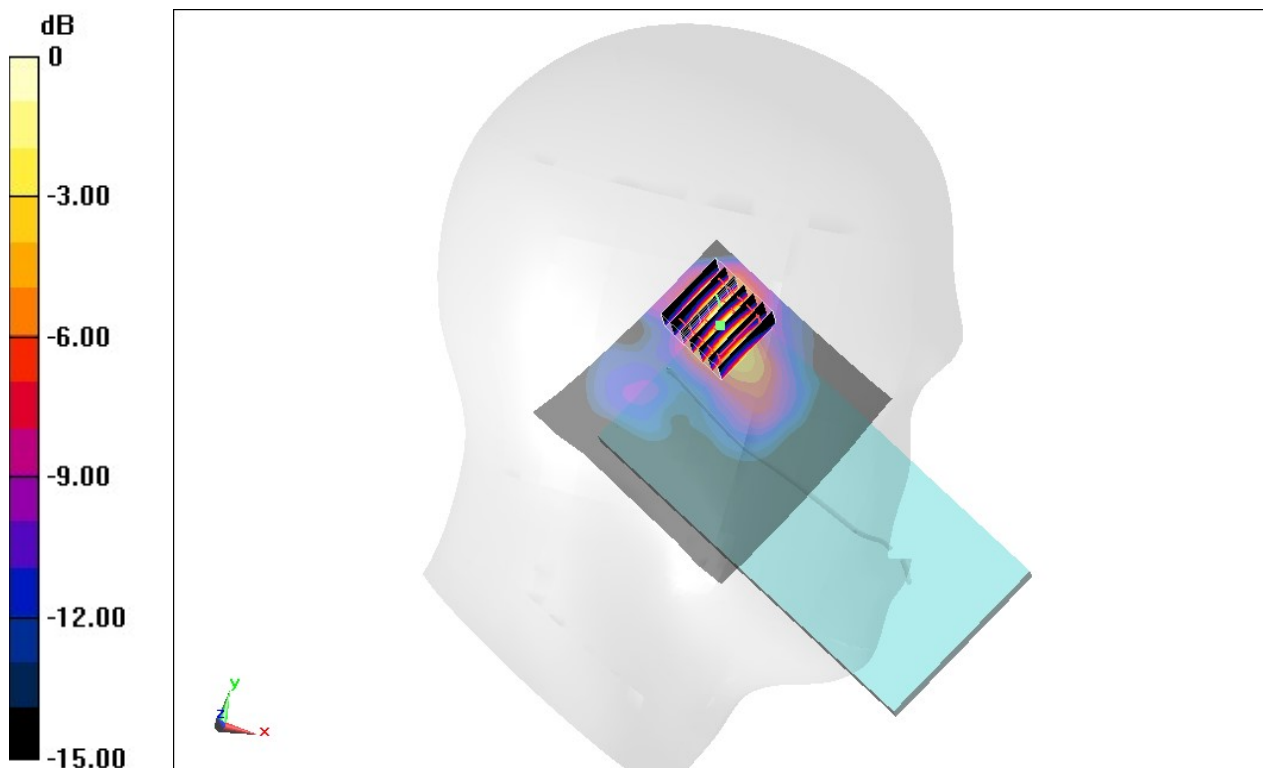
Communication System: Bluetooth ; Frequency: 2402 MHz;Duty Cycle: 1:1.305  
Medium: HSL\_2450\_190518 Medium parameters used :  $f = 2402$  MHz;  $\sigma = 1.738$  S/m;  $\epsilon_r = 40.064$ ;  
 $\rho = 1000$  kg/m<sup>3</sup>  
Ambient Temperature : 23.4 °C ; Liquid Temperature : 22.4 °C

#### DASY5 Configuration

- Probe: EX3DV4 - SN7306;ConvF(7.43, 7.43, 7.43) ;Calibrated: 2018/7/26
- Sensor-Surface: 1.4mm (Mechanical Surface Detection)
- Electronics: DAE3 Sn360; Calibrated: 2018/10/29
- Phantom: Twin-SAM V5.0 (30deg probe tilt); Type: QD 000 P40 CD; Serial: 1885
- Measurement SW: DASY52, Version 52.10 (2); SEMCAD X Version 14.6.12 (7450)

**Area Scan (81x81x1):** Interpolated grid: dx=1.200 mm, dy=1.200 mm  
Maximum value of SAR (interpolated) = 0.207 W/kg

**Zoom Scan (7x7x7)/Cube 0:** Measurement grid: dx=5mm, dy=5mm, dz=5mm  
Reference Value = 6.225 V/m; Power Drift = -0.10 dB  
Peak SAR (extrapolated) = 0.322 W/kg  
**SAR(1 g) = 0.142 W/kg; SAR(10 g) = 0.059 W/kg**  
Maximum value of SAR (measured) = 0.244 W/kg



0 dB = 0.244 W/kg = -6.13 dBW/kg

**#17\_GSM850\_GPRS (2 Tx slots)\_Back\_5mm\_Ch251**

Communication System: GSM850 ; Frequency: 848.8 MHz; Duty Cycle: 1:4.15

Medium: HSL\_850\_190530 Medium parameters used:  $f = 849$  MHz;  $\sigma = 0.903$  S/m;  $\epsilon_r = 42.228$ ;  $\rho = 1000$  kg/m<sup>3</sup>

Ambient Temperature : 23.5 °C ; Liquid Temperature : 22.5 °C

**DASY5 Configuration**

- Probe: EX3DV4 - SN7515; ConvF(9.75, 9.75, 9.75) ; Calibrated: 2018/10/3
- Sensor-Surface: 1.4mm (Mechanical Surface Detection)
- Electronics: DAE4 Sn918; Calibrated: 2018/6/20
- Phantom: SAM\_Left; Type: QD000P40CD; Serial: S/N:1801
- Measurement SW: DASY52, Version 52.10 (1); SEMCAD X Version 14.6.11 (7439)

**Area Scan (61x81x1):** Interpolated grid: dx=1.500 mm, dy=1.500 mm

Maximum value of SAR (interpolated) = 1.52 W/kg

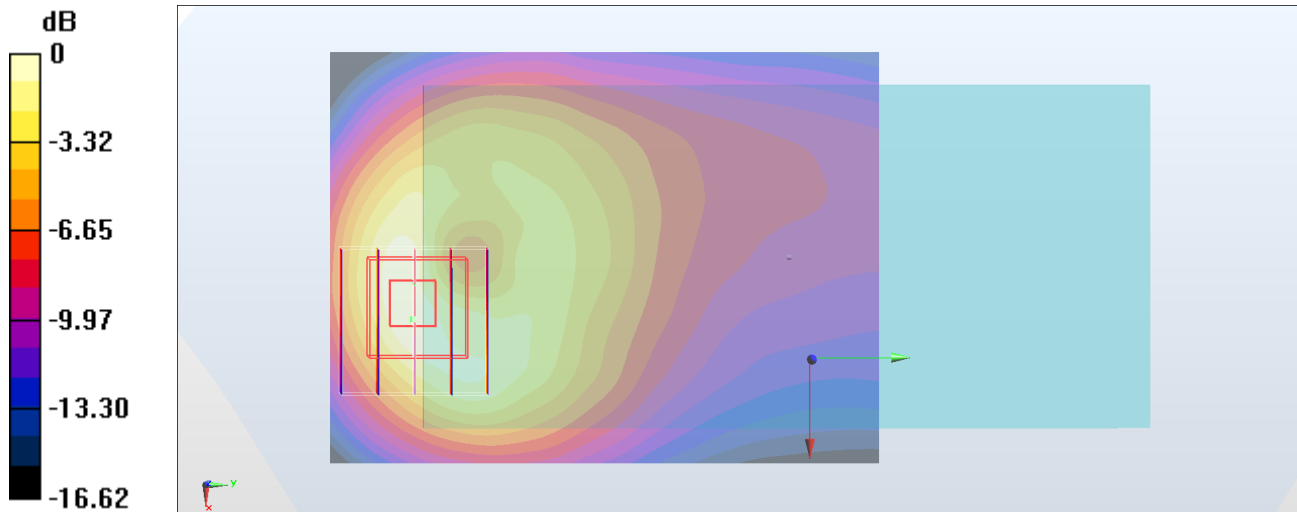
**Zoom Scan (5x5x7)/Cube 0:** Measurement grid: dx=8mm, dy=8mm, dz=5mm

Reference Value = 22.44 V/m; Power Drift = -0.10 dB

Peak SAR (extrapolated) = 2.12 W/kg

**SAR(1 g) = 1.12 W/kg; SAR(10 g) = 0.598 W/kg**

Maximum value of SAR (measured) = 1.80 W/kg



0 dB = 1.52 W/kg = 1.82 dBW/kg

### #18\_GSM1900\_GPRS (2 Tx slots)\_Back\_5mm\_Ch810

Communication System: PCS; Frequency: 1909.8 MHz; Duty Cycle: 1:4.15

Medium: HSL\_1900\_190528 Medium parameters used:  $f = 1910$  MHz;  $\sigma = 1.418$  S/m;  $\epsilon_r = 40.499$ ;  $\rho = 1000$  kg/m<sup>3</sup>

Ambient Temperature : 23.6 °C ; Liquid Temperature : 22.6 °C

DASY5 Configuration:

- Probe: EX3DV4 - SN7350; ConvF(8.24, 8.24, 8.24) ; Calibrated: 2018/12/14
- Sensor-Surface: 1.4mm (Mechanical Surface Detection)
- Electronics: DAE3 Sn360; Calibrated: 2018/10/29
- Phantom: SAM LEFT; Type: QD000P40CD; Serial: TP:1718
- Measurement SW: DASY52, Version 52.10 (1); SEMCAD X Version 14.6.11 (7439)

**Area Scan (61x61x1):** Interpolated grid: dx=1.500 mm, dy=1.500 mm

Maximum value of SAR (interpolated) = 1.60 W/kg

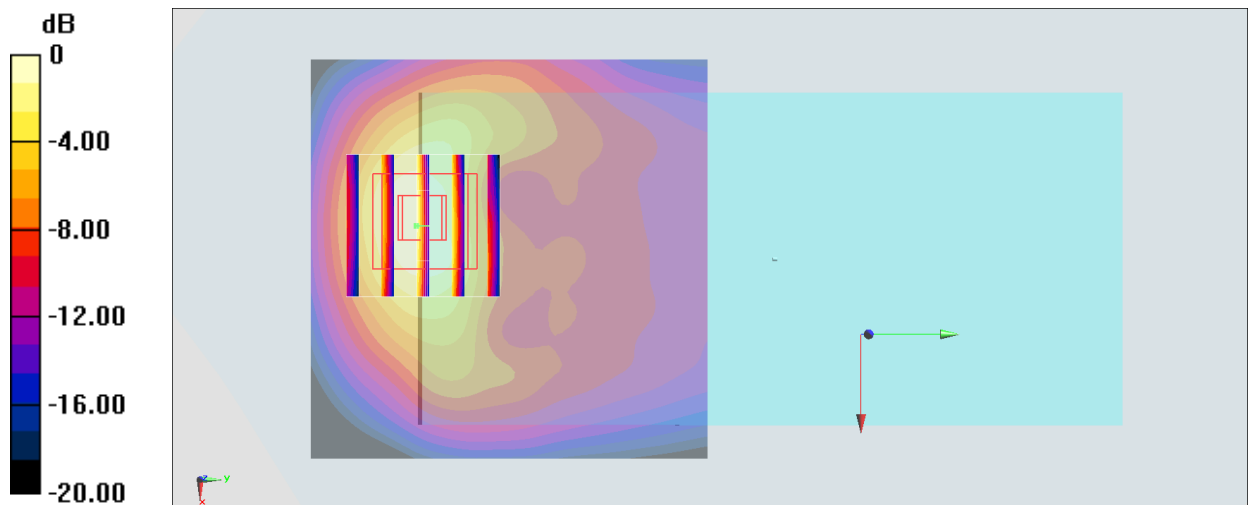
**Zoom Scan (5x5x7)/Cube 0:** Measurement grid: dx=8mm, dy=8mm, dz=5mm

Reference Value = 26.43 V/m; Power Drift = -0.17 dB

Peak SAR (extrapolated) = 2.46 W/kg

**SAR(1 g) = 1.23 W/kg; SAR(10 g) = 0.586 W/kg**

Maximum value of SAR (measured) = 1.93 W/kg



0 dB = 1.60 W/kg = 2.04 dBW/kg

### #19\_WCDMA II\_RMC 12.2Kbps\_Back\_5mm\_Ch9400

Communication System: WCDMA ; Frequency: 1880 MHz;Duty Cycle: 1:1

Medium: HSL\_1900\_190528 Medium parameters used:  $f = 1880$  MHz;  $\sigma = 1.387$  S/m;  $\epsilon_r = 40.611$ ;  $\rho = 1000$  kg/m<sup>3</sup>

Ambient Temperature : 23.6 °C ; Liquid Temperature : 22.6 °C

**DASY5 Configuration:**

- Probe: EX3DV4 - SN7350; ConvF(8.24, 8.24, 8.24) ; Calibrated: 2018/12/14
- Sensor-Surface: 1.4mm (Mechanical Surface Detection)
- Electronics: DAE3 Sn360; Calibrated: 2018/10/29
- Phantom: SAM LEFT; Type: QD000P40CD; Serial: TP:1718
- Measurement SW: DASY52, Version 52.10 (1);SEMCAD X Version 14.6.11 (7439)

**Area Scan (61x61x1):** Interpolated grid: dx=1.500 mm, dy=1.500 mm

Maximum value of SAR (interpolated) = 1.32 W/kg

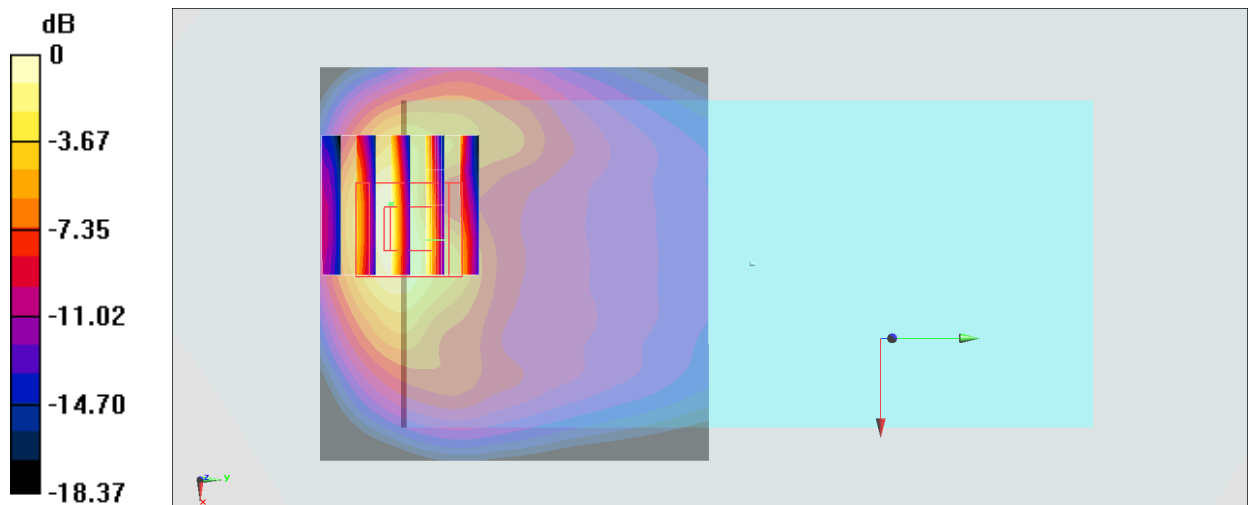
**Zoom Scan (5x5x7)/Cube 0:** Measurement grid: dx=8mm, dy=8mm, dz=5mm

Reference Value = 12.62 V/m; Power Drift = 0.05 dB

Peak SAR (extrapolated) = 2.01 W/kg

**SAR(1 g) = 1.021 W/kg; SAR(10 g) = 0.454 W/kg**

Maximum value of SAR (measured) = 1.34 W/kg



0 dB = 1.32 W/kg = 1.21 dBW/kg

**#20\_WCDMA IV\_RMC 12.2Kbps\_Back\_5mm\_Ch1312**

Communication System: WCDMA ; Frequency: 1712.4 MHz; Duty Cycle: 1:1

Medium: HSL\_1750\_190528 Medium parameters used :  $f = 1712.4$  MHz;  $\sigma = 1.358$  S/m;  $\epsilon_r = 41.784$ ;  $\rho = 1000$  kg/m<sup>3</sup>

Ambient Temperature : 23.6 °C ; Liquid Temperature : 22.6 °C

DASY5 Configuration:

- Probe: EX3DV4 - SN7350; ConvF(8.63, 8.63, 8.63) ; Calibrated: 2018/12/14
- Sensor-Surface: 1.4mm (Mechanical Surface Detection)
- Electronics: DAE3 Sn360; Calibrated: 2018/10/29
- Phantom: SAM LEFT; Type: QD000P40CD; Serial: TP:1718
- Measurement SW: DASY52, Version 52.10 (1); SEMCAD X Version 14.6.11 (7439)

**Area Scan (61x61x1):** Interpolated grid: dx=1.500 mm, dy=1.500 mm

Maximum value of SAR (interpolated) = 1.30 W/kg

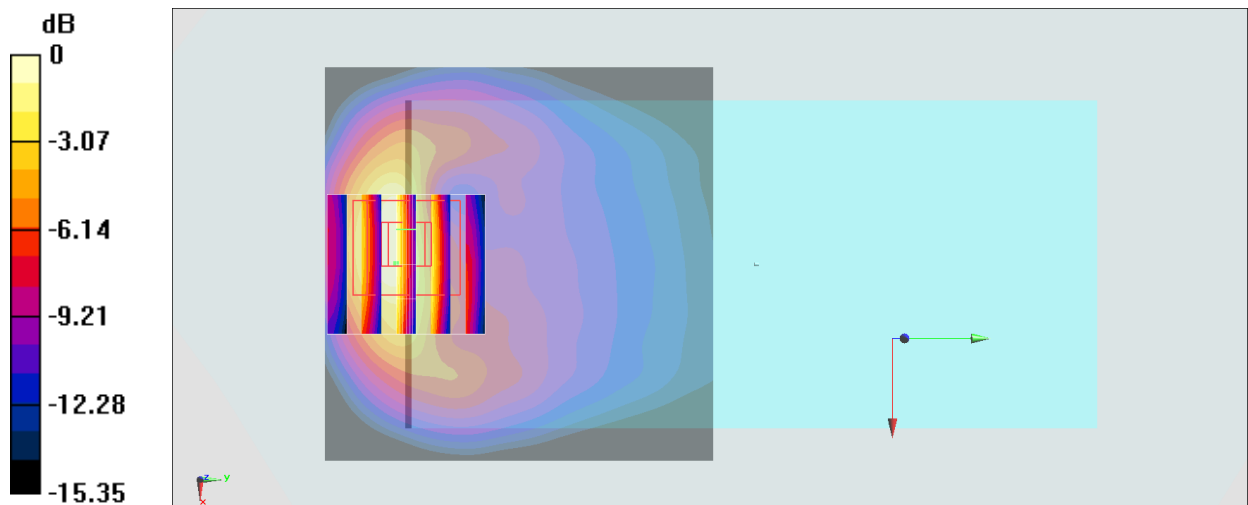
**Zoom Scan (5x5x7)/Cube 0:** Measurement grid: dx=8mm, dy=8mm, dz=5mm

Reference Value = 15.08 V/m; Power Drift = 0.14 dB

Peak SAR (extrapolated) = 1.69 W/kg

**SAR(1 g) = 0.863 W/kg; SAR(10 g) = 0.423 W/kg**

Maximum value of SAR (measured) = 1.28 W/kg



0 dB = 1.30 W/kg = 1.14 dBW/kg

## #21\_WCDMA V\_RMC 12.2Kbps\_Back\_5mm\_Ch4233

Communication System: WCDMA ; Frequency: 846.6 MHz; Duty Cycle: 1:1

Medium: HSL\_850\_190530 Medium parameters used:  $f = 847$  MHz;  $\sigma = 0.901$  S/m;  $\epsilon_r = 42.254$ ;  $\rho = 1000$  kg/m<sup>3</sup>

Ambient Temperature : 23.5 °C ; Liquid Temperature : 22.5 °C

### DASY5 Configuration

- Probe: EX3DV4 - SN7515; ConvF(9.75, 9.75, 9.75) ; Calibrated: 2018/10/3
- Sensor-Surface: 1.4mm (Mechanical Surface Detection)
- Electronics: DAE4 Sn918; Calibrated: 2018/6/20
- Phantom: SAM\_Left; Type: QD000P40CD; Serial: S/N:1801
- Measurement SW: DASY52, Version 52.10 (1); SEMCAD X Version 14.6.11 (7439)

**Area Scan (61x101x1):** Interpolated grid: dx=1.500 mm, dy=1.500 mm

Maximum value of SAR (interpolated) = 1.45 W/kg

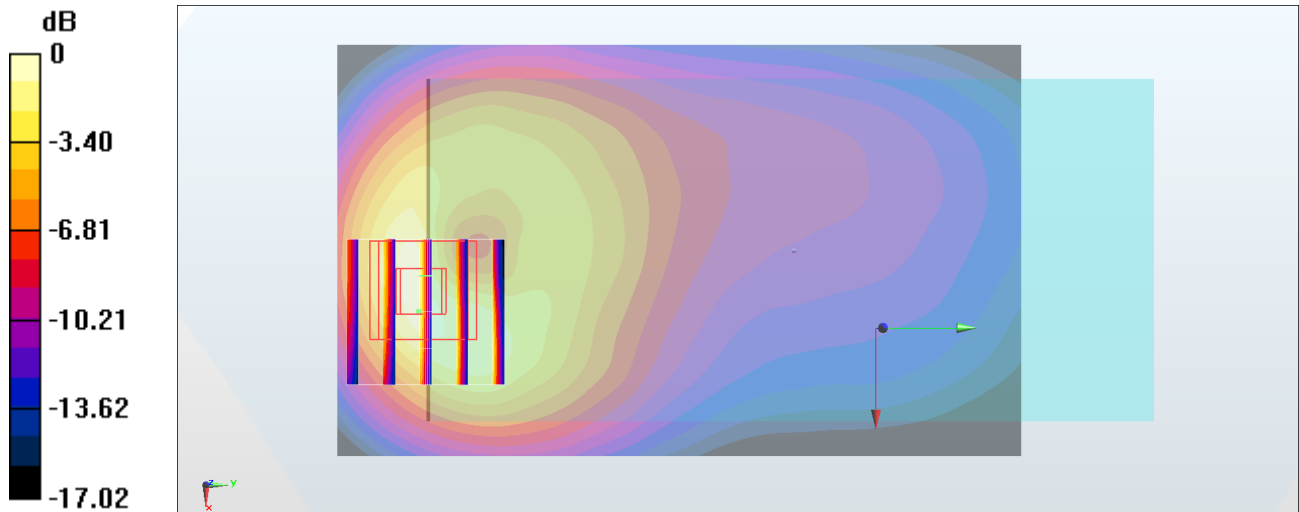
**Zoom Scan (5x5x7)/Cube 0:** Measurement grid: dx=8mm, dy=8mm, dz=5mm

Reference Value = 25.80 V/m; Power Drift = -0.06 dB

Peak SAR (extrapolated) = 1.96 W/kg

**SAR(1 g) = 1.01 W/kg; SAR(10 g) = 0.538 W/kg**

Maximum value of SAR (measured) = 1.65 W/kg



0 dB = 1.65 W/kg = 2.17 dBW/kg



### #23\_LTE Band 4\_20M\_QPSK\_1\_0\_Back\_5mm\_Ch20175

Communication System: LTE ; Frequency: 1732.5 MHz;Duty Cycle: 1:1

Medium: HSL\_1750\_190527 Medium parameters used:  $f = 1733$  MHz;  $\sigma = 1.362$  S/m;  $\epsilon_r = 41.487$ ;  $\rho = 1000$  kg/m<sup>3</sup>

Ambient Temperature : 23.7 °C ; Liquid Temperature : 22.7 °C

**DASY5 Configuration:**

- Probe: EX3DV4 - SN7350; ConvF(8.63, 8.63, 8.63) ; Calibrated: 2018/12/14
- Sensor-Surface: 1.4mm (Mechanical Surface Detection)
- Electronics: DAE3 Sn360; Calibrated: 2018/10/29
- Phantom: SAM LEFT; Type: QD000P40CD; Serial: TP:1718
- Measurement SW: DASY52, Version 52.10 (1);SEMCAD X Version 14.6.11 (7439)

**Area Scan (61x61x1):** Interpolated grid: dx=1.500 mm, dy=1.500 mm

Maximum value of SAR (interpolated) = 1.67 W/kg

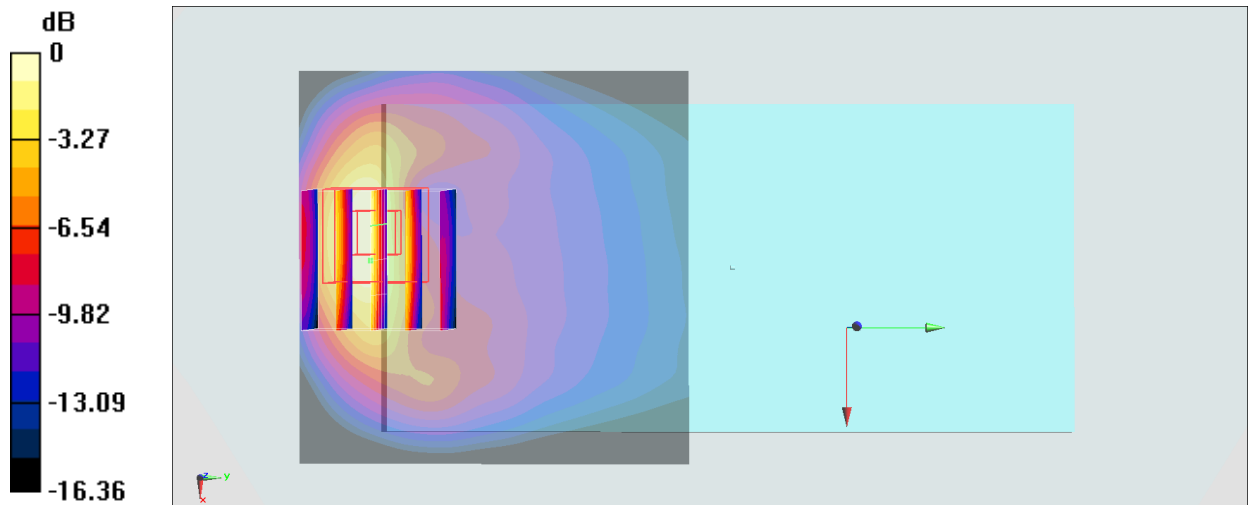
**Zoom Scan (5x5x7)/Cube 0:** Measurement grid: dx=8mm, dy=8mm, dz=5mm

Reference Value = 27.57 V/m; Power Drift = -0.18 dB

Peak SAR (extrapolated) = 2.30 W/kg

**SAR(1 g) = 1.18 W/kg; SAR(10 g) = 0.568 W/kg**

Maximum value of SAR (measured) = 1.85 W/kg



0 dB = 1.67 W/kg = 2.23 dBW/kg

**#24\_LTE Band 5\_10M\_QPSK\_25\_0\_Back\_5mm\_Ch20525**

Communication System: LTE; Frequency: 836.5 MHz; Duty Cycle: 1:1

Medium: HSL\_850\_190530 Medium parameters used :  $f = 836.5$  MHz;  $\sigma = 0.891$  S/m;  $\epsilon_r = 42.409$ ;  $\rho = 1000$  kg/m<sup>3</sup>

Ambient Temperature : 23.5 °C ; Liquid Temperature : 22.5 °C

**DASY5 Configuration**

- Probe: EX3DV4 - SN7515; ConvF(9.75, 9.75, 9.75) ; Calibrated: 2018/10/3
- Sensor-Surface: 1.4mm (Mechanical Surface Detection)
- Electronics: DAE4 Sn918; Calibrated: 2018/6/20
- Phantom: SAM\_Left; Type: QD000P40CD; Serial: S/N:1801
- Measurement SW: DASY52, Version 52.10 (1); SEMCAD X Version 14.6.11 (7439)

**Area Scan (61x81x1):** Interpolated grid: dx=1.500 mm, dy=1.500 mm

Maximum value of SAR (interpolated) = 1.45 W/kg

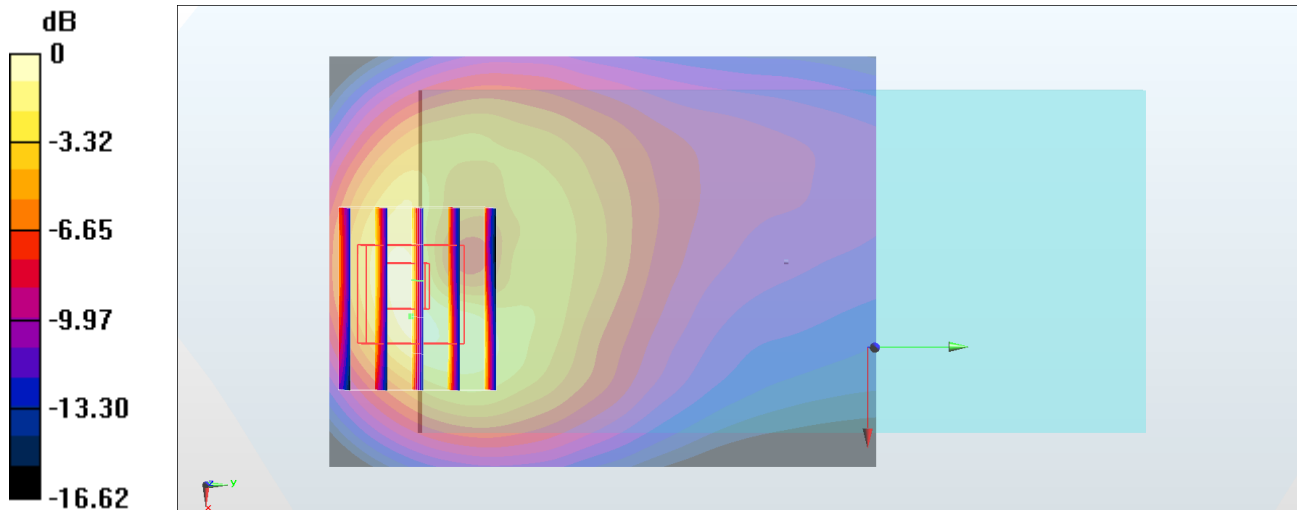
**Zoom Scan (6x5x7)/Cube 0:** Measurement grid: dx=8mm, dy=8mm, dz=5mm

Reference Value = 30.37 V/m; Power Drift = -0.02 dB

Peak SAR (extrapolated) = 1.98 W/kg

**SAR(1 g) = 0.997 W/kg; SAR(10 g) = 0.524 W/kg**

Maximum value of SAR (measured) = 1.65 W/kg



0 dB = 1.65 W/kg = 2.17 dBW/kg

**#25\_LTE Band 7\_20M\_QPSK\_50\_0\_Back\_5mm\_Ch21350**

Communication System: LTE; Frequency: 2560 MHz; Duty Cycle: 1:1

Medium: HSL\_2600\_190530 Medium parameters used:  $f = 2560$  MHz;  $\sigma = 1.981$  S/m;  $\epsilon_r = 39.514$ ;  $\rho = 1000$  kg/m<sup>3</sup>

Ambient Temperature : 23.4 °C ; Liquid Temperature : 22.4 °C

DASY5 Configuration:

- Probe: EX3DV4 - SN7350; ConvF(7.35, 7.35, 7.35) ; Calibrated: 2018/12/14
- Sensor-Surface: 1.4mm (Mechanical Surface Detection)
- Electronics: DAE3 Sn360; Calibrated: 2018/10/29
- Phantom: SAM LEFT; Type: QD000P40CD; Serial: TP:1718
- Measurement SW: DASY52, Version 52.10 (1); SEMCAD X Version 14.6.11 (7439)

**Area Scan (81x71x1):** Interpolated grid: dx=1.200 mm, dy=1.200 mm

Maximum value of SAR (interpolated) = 2.08 W/kg

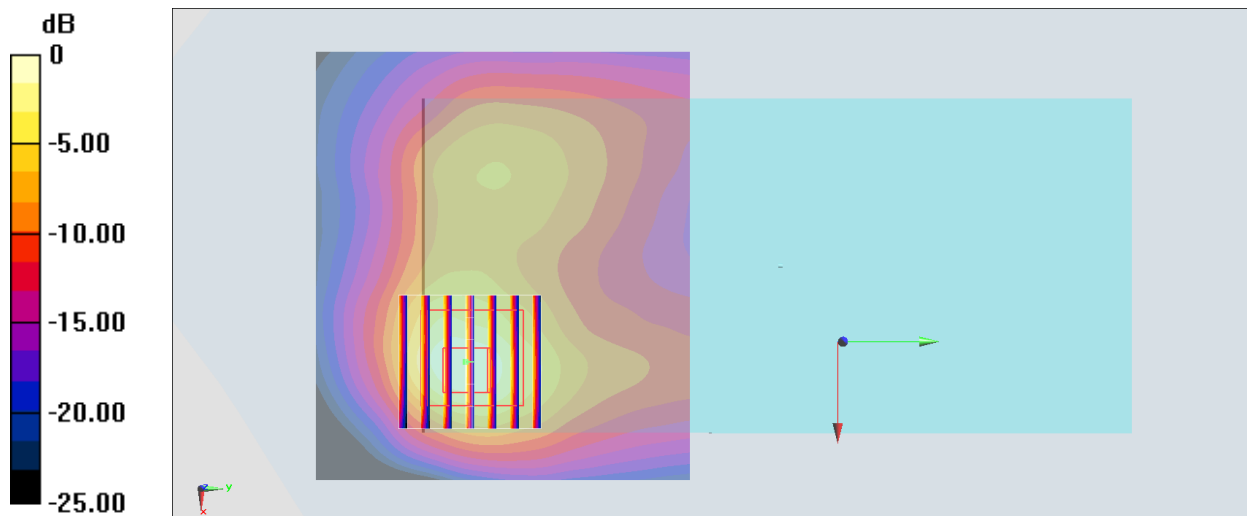
**Zoom Scan (7x7x7)/Cube 0:** Measurement grid: dx=5mm, dy=5mm, dz=5mm

Reference Value = 22.73 V/m; Power Drift = -0.13 dB

Peak SAR (extrapolated) = 2.82 W/kg

**SAR(1 g) = 1.05 W/kg; SAR(10 g) = 0.446 W/kg**

Maximum value of SAR (measured) = 2.02 W/kg



**#26\_LTE Band 12\_10M\_QPSK\_1\_0\_Back\_5mm\_Ch23095**

Communication System: LTE ; Frequency: 707.5 MHz;Duty Cycle: 1:1

Medium: HSL\_750\_190519 Medium parameters used:  $f = 707.5$  MHz;  $\sigma = 0.853$  S/m;  $\epsilon_r = 41.036$ ;  $\rho = 1000$  kg/m<sup>3</sup>

Ambient Temperature : 23.7 °C ; Liquid Temperature : 22.7 °C

DASY5 Configuration:

- Probe: EX3DV4 - SN3642; ConvF(9.16, 9.16, 9.16) ; Calibrated: 2019/4/29
- Sensor-Surface: 1.4mm (Mechanical Surface Detection)
- Electronics: DAE4 Sn699; Calibrated: 2019/1/3
- Phantom: SAM\_Left; Type: QD000P40CD; Serial: TP:1815
- Measurement SW: DASY52, Version 52.10 (1);SEMCAD X Version 14.6.11 (7439)

**Area Scan (61x61x1):** Interpolated grid: dx=1.500 mm, dy=1.500 mm

Maximum value of SAR (interpolated) = 1.34 W/kg

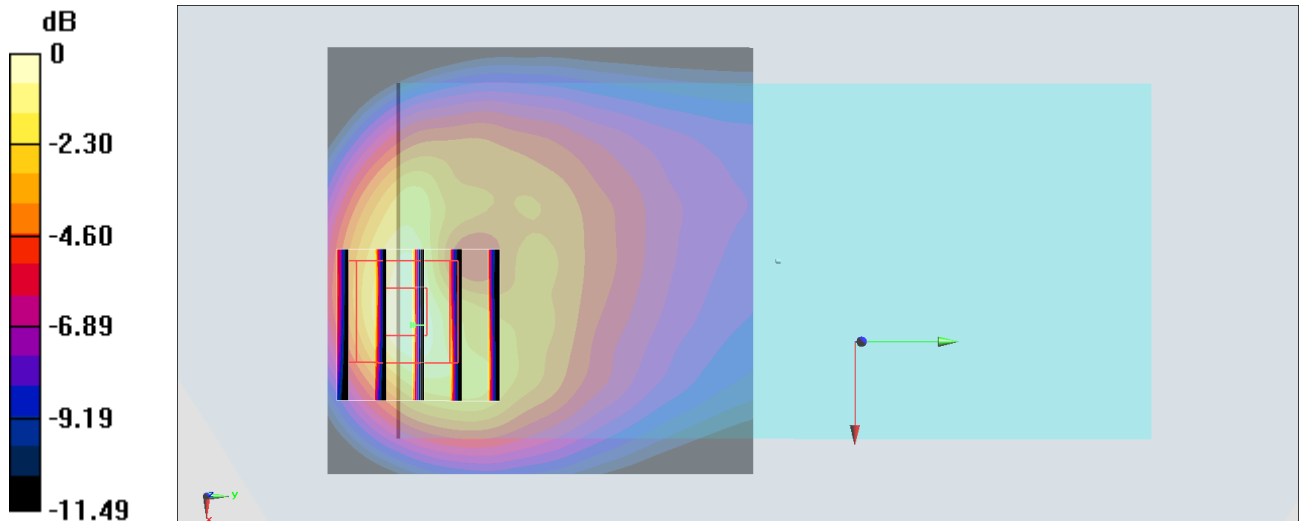
**Zoom Scan (5x5x7)/Cube 0:** Measurement grid: dx=8mm, dy=8mm, dz=5mm

Reference Value = 25.22 V/m; Power Drift = -0.13 dB

Peak SAR (extrapolated) = 1.58 W/kg

**SAR(1 g) = 0.747 W/kg; SAR(10 g) = 0.393 W/kg**

Maximum value of SAR (measured) = 1.26 W/kg



0 dB = 1.26 W/kg = 1.00 dBW/kg

**#27\_LTE Band 66\_20M\_QPSK\_1\_0\_Back\_5mm\_Ch132572**

Communication System: LTE ; Frequency: 1770 MHz;Duty Cycle: 1:1

Medium: HSL\_1750\_190527 Medium parameters used:  $f = 1770$  MHz;  $\sigma = 1.392$  S/m;  $\epsilon_r = 41.398$ ;  $\rho = 1000$  kg/m<sup>3</sup>

Ambient Temperature : 23.7 °C ; Liquid Temperature : 22.7 °C

DASY5 Configuration:

- Probe: EX3DV4 - SN7350; ConvF(8.63, 8.63, 8.63) ; Calibrated: 2018/12/14
- Sensor-Surface: 1.4mm (Mechanical Surface Detection)
- Electronics: DAE3 Sn360; Calibrated: 2018/10/29
- Phantom: SAM LEFT; Type: QD000P40CD; Serial: TP:1718
- Measurement SW: DASY52, Version 52.10 (1);SEMCAD X Version 14.6.11 (7439)

**Area Scan (61x61x1):** Interpolated grid: dx=1.500 mm, dy=1.500 mm

Maximum value of SAR (interpolated) = 1.63 W/kg

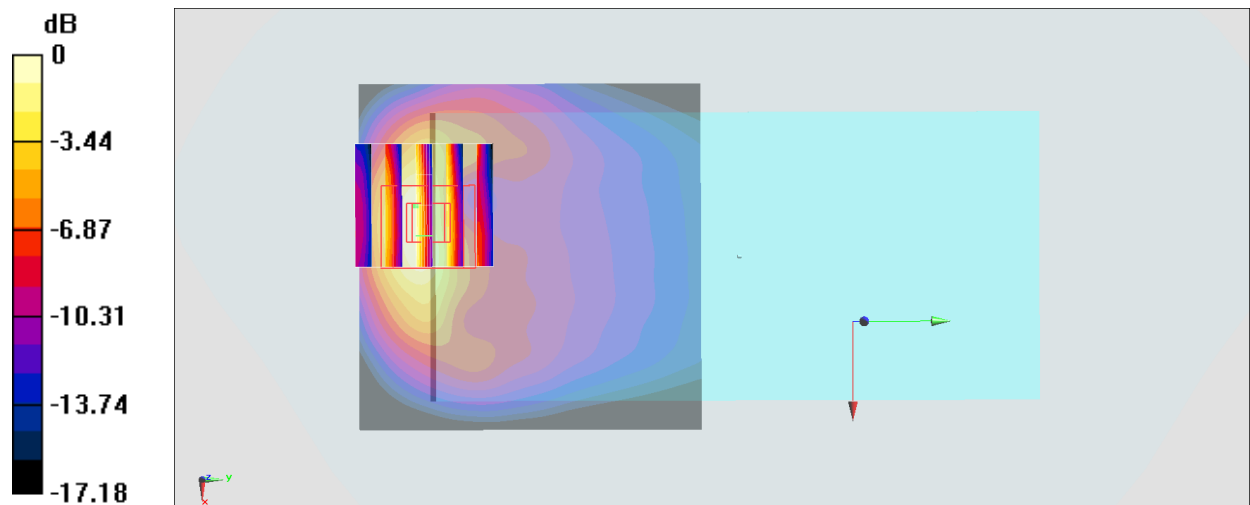
**Zoom Scan (5x5x7)/Cube 0:** Measurement grid: dx=8mm, dy=8mm, dz=5mm

Reference Value = 27.49 V/m; Power Drift = -0.04 dB

Peak SAR (extrapolated) = 2.26 W/kg

**SAR(1 g) = 1.12 W/kg; SAR(10 g) = 0.534 W/kg**

Maximum value of SAR (measured) = 1.54 W/kg



**#28\_LTE Band 41\_20M\_QPSK\_1\_0\_Back\_5mm\_Ch41140**

Communication System: LTE TDD ; Frequency: 2645 MHz; Duty Cycle: 1:1.59

Medium: HSL\_2600\_190530 Medium parameters used :  $f = 2645$  MHz;  $\sigma = 2.062$  S/m;  $\epsilon_r = 39.229$ ;  $\rho = 1000$  kg/m<sup>3</sup>

Ambient Temperature : 23.4 °C ; Liquid Temperature : 22.4 °C

DASY5 Configuration:

- Probe: EX3DV4 - SN7350; ConvF(7.35, 7.35, 7.35) ; Calibrated: 2018/12/14
- Sensor-Surface: 1.4mm (Mechanical Surface Detection)
- Electronics: DAE3 Sn360; Calibrated: 2018/10/29
- Phantom: SAM LEFT; Type: QD000P40CD; Serial: TP:1718
- Measurement SW: DASY52, Version 52.10 (1); SEMCAD X Version 14.6.11 (7439)

**Area Scan (81x71x1):** Interpolated grid: dx=1.200 mm, dy=1.200 mm

Maximum value of SAR (interpolated) = 2.14 W/kg

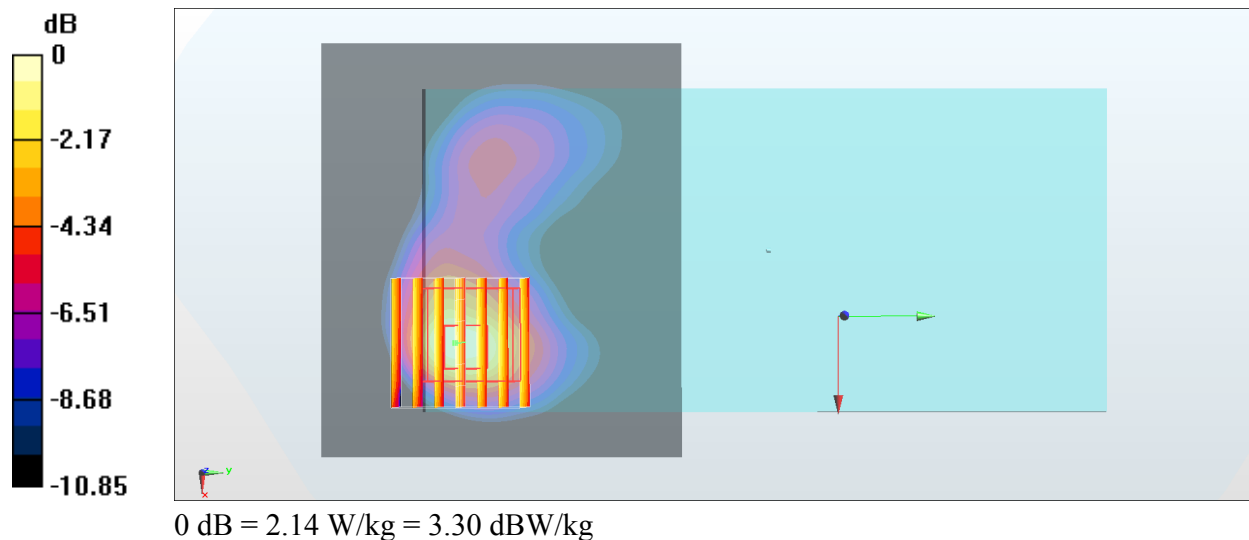
**Zoom Scan (7x7x7)/Cube 0:** Measurement grid: dx=5mm, dy=5mm, dz=5mm

Reference Value = 23.15 V/m; Power Drift = -0.00 dB

Peak SAR (extrapolated) = 2.81 W/kg

**SAR(1 g) = 1.06 W/kg; SAR(10 g) = 0.439 W/kg**

Maximum value of SAR (measured) = 2.02 W/kg



### #29\_WLAN2.4GHz\_802.11b 1Mbps\_Front\_5mm\_Ch6

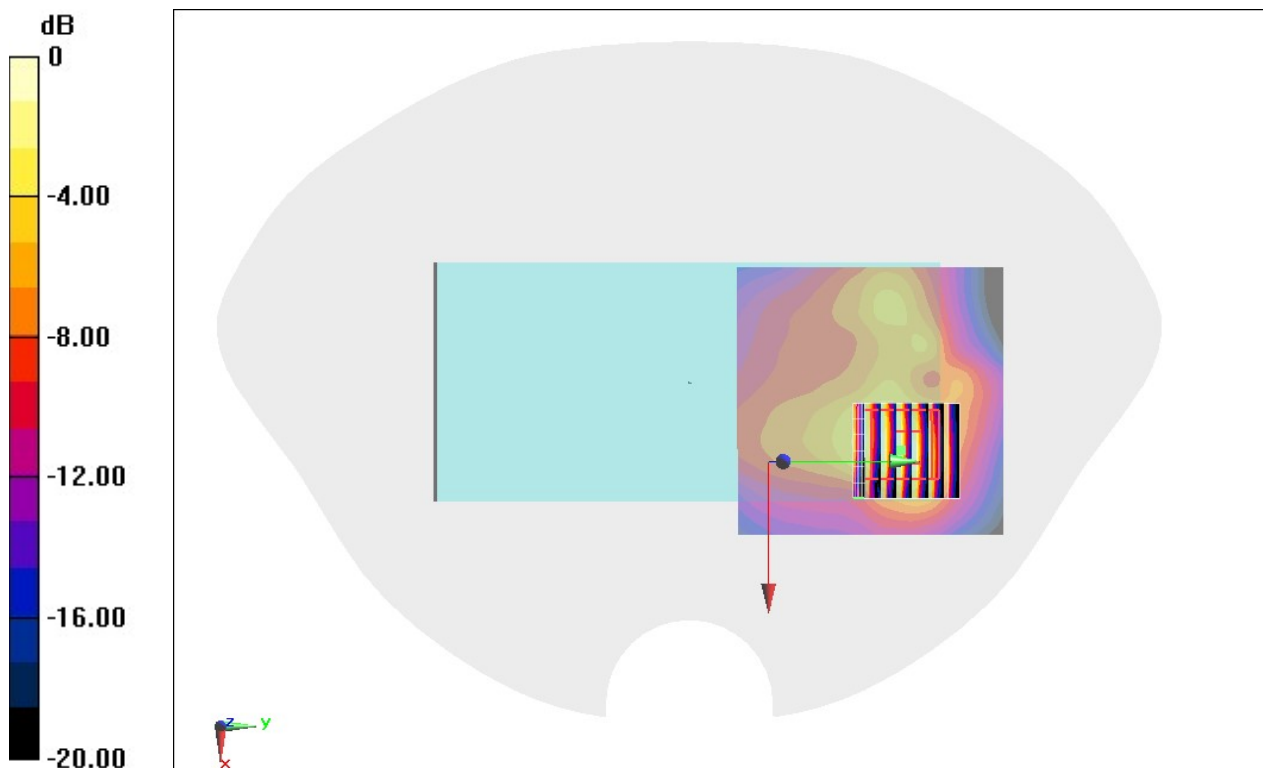
Communication System: 802.11b ; Frequency: 2437 MHz;Duty Cycle: 1:1.012  
Medium: HSL\_2450\_190518 Medium parameters used :  $f = 2437$  MHz;  $\sigma = 1.781$  S/m;  $\epsilon_r = 39.931$ ;  
 $\rho = 1000$  kg/m<sup>3</sup>  
Ambient Temperature : 23.4 °C ; Liquid Temperature : 22.4 °C

#### DASY5 Configuration

- Probe: EX3DV4 - SN7306;ConvF(7.43, 7.43, 7.43) ;Calibrated: 2018/7/26
- Sensor-Surface: 1.4mm (Mechanical Surface Detection)
- Electronics: DAE3 Sn360; Calibrated: 2018/10/29
- Phantom: Twin-SAM V5.0 (30deg probe tilt); Type: QD 000 P40 CD; Serial: 1885
- Measurement SW: DASY52, Version 52.10 (2); SEMCAD X Version 14.6.12 (7450)

**Area Scan (71x71x1):** Interpolated grid: dx=1.200 mm, dy=1.200 mm  
Maximum value of SAR (interpolated) = 0.664 W/kg

**Zoom Scan (7x7x7)/Cube 0:** Measurement grid: dx=5mm, dy=5mm, dz=5mm  
Reference Value = 12.44 V/m; Power Drift = -0.11 dB  
Peak SAR (extrapolated) = 0.887 W/kg  
**SAR(1 g) = 0.425 W/kg; SAR(10 g) = 0.188 W/kg**  
Maximum value of SAR (measured) = 0.700 W/kg



0 dB = 0.700 W/kg = -1.55 dBW/kg

**#30\_WLAN5GHz\_802.11a 6Mbps\_Back\_5mm\_Ch44**

Communication System: 802.11a ; Frequency: 5220 MHz;Duty Cycle: 1:1.019

Medium: HSL\_5G\_190522 Medium parameters used :  $f = 5220$  MHz;  $\sigma = 4.479$  S/m;  $\epsilon_r = 37.201$ ;  $\rho = 1000$  kg/m<sup>3</sup>

Ambient Temperature : 23.6 °C ; Liquid Temperature : 22.6 °C

DASY5 Configuration:

- Probe: EX3DV4 - SN3728; ConvF(4.77, 4.77, 4.77) ; Calibrated: 2019/1/15
- Sensor-Surface: 1.4mm (Mechanical Surface Detection)
- Electronics: DAE4 Sn853; Calibrated: 2018/7/24
- Phantom: SAM LEFT; Type: QD000P40CD; Serial: TP:1718
- Measurement SW: DASY52, Version 52.10 (1);SEMCAD X Version 14.6.11 (7439)

**Area Scan (101x101x1):** Interpolated grid: dx=1.000 mm, dy=1.000 mm

Maximum value of SAR (interpolated) = 0.901 W/kg

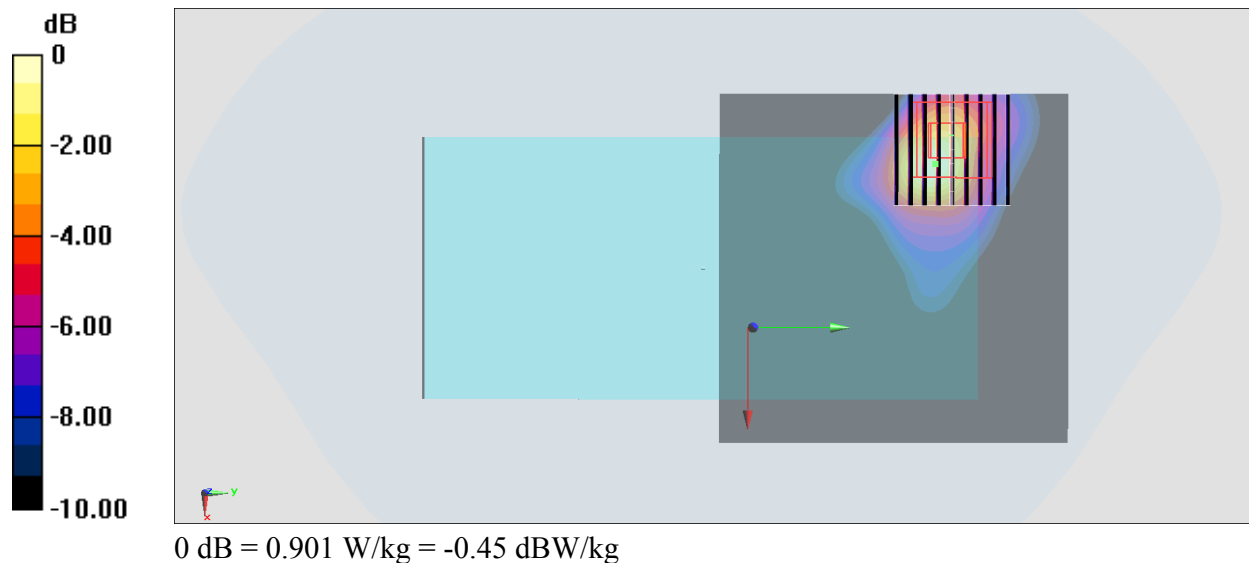
**Zoom Scan (9x9x7)/Cube 0:** Measurement grid: dx=4mm, dy=4mm, dz=1.4mm

Reference Value = 12.90 V/m; Power Drift = -0.17 dB

Peak SAR (extrapolated) = 2.72 W/kg

**SAR(1 g) = 0.647 W/kg; SAR(10 g) = 0.179 W/kg**

Maximum value of SAR (measured) = 1.62 W/kg



## #31\_WLAN5GHz\_802.11a\_6Mbps\_Back\_5mm\_Ch149

Communication System: 802.11a ; Frequency: 5745 MHz;Duty Cycle: 1:1.019

Medium: HSL\_5G\_190521 Medium parameters used :  $f = 5745$  MHz;  $\sigma = 5.038$  S/m;  $\epsilon_r = 36.02$ ;  $\rho = 1000$  kg/m<sup>3</sup>

Ambient Temperature : 23.5 °C ; Liquid Temperature : 22.5 °C

### DASY5 Configuration

- Probe: EX3DV4 - SN3642;ConvF(4.36, 4.36, 4.36) ;Calibrated: 2019/4/29
- Sensor-Surface: 1.4mm (Mechanical Surface Detection)
- Electronics: DAE4 Sn914; Calibrated: 2018/12/11
- Phantom: SAM\_Left; Type: QD000P40CD; Serial: S/N:1801
- Measurement SW: DASY52, Version 52.10 (1); SEMCAD X Version 14.6.11 (7439)

**Area Scan (101x101x1):** Interpolated grid: dx=1.000 mm, dy=1.000 mm

Maximum value of SAR (interpolated) = 1.67 W/kg

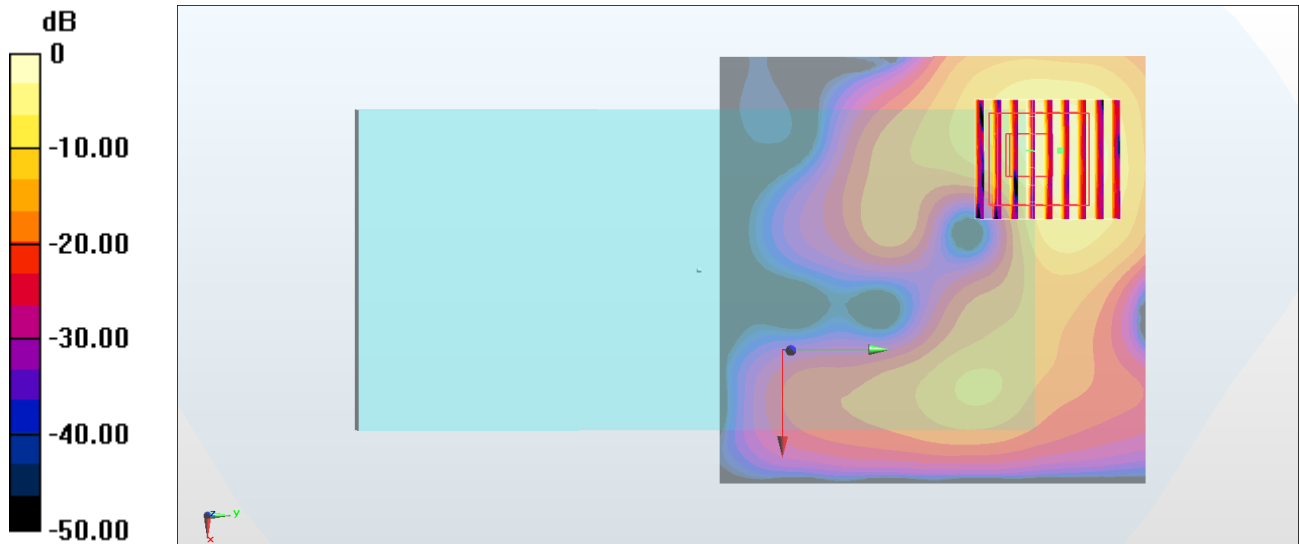
**Zoom Scan (8x9x7)/Cube 0:** Measurement grid: dx=4mm, dy=4mm, dz=1.4mm

Reference Value = 22.57 V/m; Power Drift = 0.16 dB

Peak SAR (extrapolated) = 6.04 W/kg

**SAR(1 g) = 1.33 W/kg; SAR(10 g) = 0.367 W/kg**

Maximum value of SAR (measured) = 3.56 W/kg



0 dB = 3.56 W/kg = 5.51 dBW/kg

### #32\_Bluetooth\_1Mbps\_Front\_5mm\_Ch0

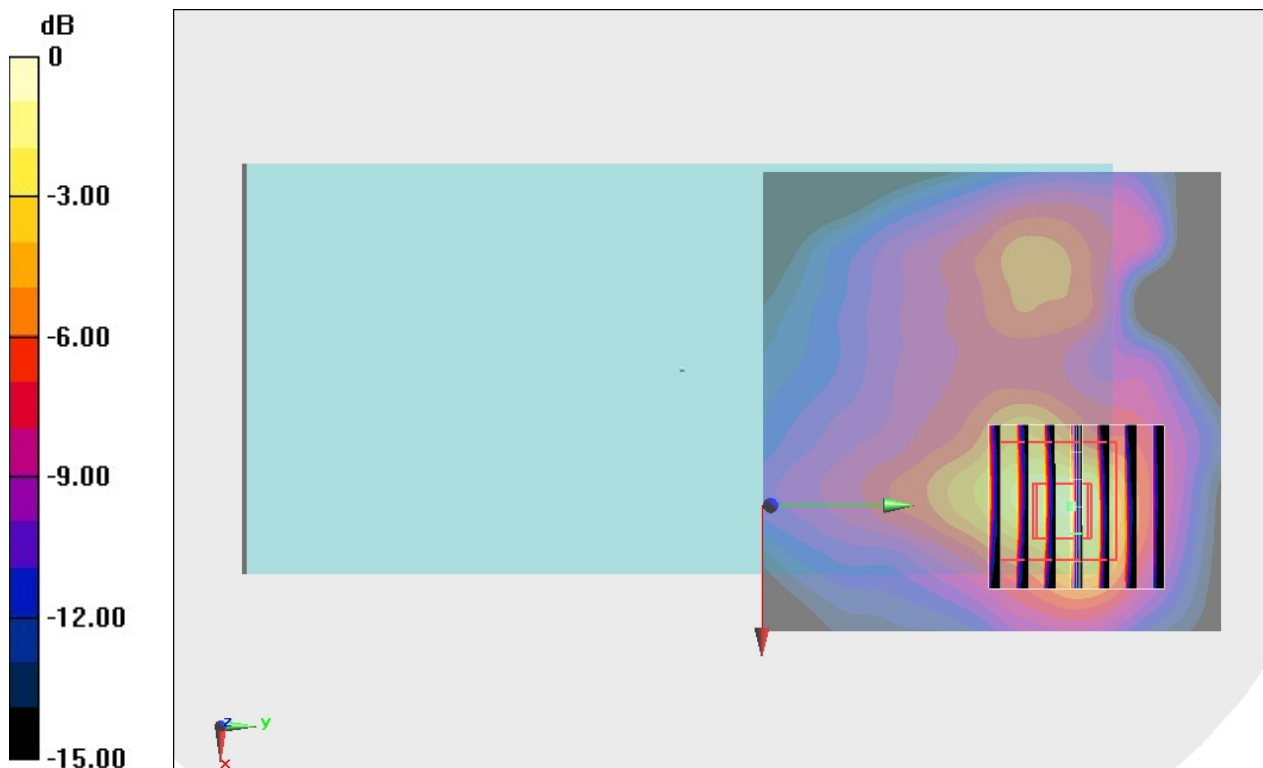
Communication System: Bluetooth ; Frequency: 2402 MHz;Duty Cycle: 1:1.305  
Medium: HSL\_2450\_190518 Medium parameters used :  $f = 2402$  MHz;  $\sigma = 1.738$  S/m;  $\epsilon_r = 40.064$ ;  
 $\rho = 1000$  kg/m<sup>3</sup>  
Ambient Temperature : 23.4 °C ; Liquid Temperature : 22.4 °C

#### DASY5 Configuration

- Probe: EX3DV4 - SN7306;ConvF(7.43, 7.43, 7.43) ;Calibrated: 2018/7/26
- Sensor-Surface: 1.4mm (Mechanical Surface Detection)
- Electronics: DAE3 Sn360; Calibrated: 2018/10/29
- Phantom: Twin-SAM V5.0 (30deg probe tilt); Type: QD 000 P40 CD; Serial: 1885
- Measurement SW: DASY52, Version 52.10 (2); SEMCAD X Version 14.6.12 (7450)

**Area Scan (71x71x1):** Interpolated grid: dx=1.200 mm, dy=1.200 mm  
Maximum value of SAR (interpolated) = 0.0921 W/kg

**Zoom Scan (7x7x7)/Cube 0:** Measurement grid: dx=5mm, dy=5mm, dz=5mm  
Reference Value = 4.130 V/m; Power Drift = 0.10 dB  
Peak SAR (extrapolated) = 0.144 W/kg  
**SAR(1 g) = 0.067 W/kg; SAR(10 g) = 0.029 W/kg**  
Maximum value of SAR (measured) = 0.113 W/kg



0 dB = 0.113 W/kg = -9.47 dBW/kg

**#33\_GSM850\_GPRS (2 Tx slots)\_Back\_5mm\_Ch251**

Communication System: GSM850 ; Frequency: 848.8 MHz; Duty Cycle: 1:4.15

Medium: HSL\_850\_190530 Medium parameters used:  $f = 849$  MHz;  $\sigma = 0.903$  S/m;  $\epsilon_r = 42.228$ ;  $\rho = 1000$  kg/m<sup>3</sup>

Ambient Temperature : 23.5 °C ; Liquid Temperature : 22.5 °C

**DASY5 Configuration**

- Probe: EX3DV4 - SN7515; ConvF(9.75, 9.75, 9.75) ; Calibrated: 2018/10/3
- Sensor-Surface: 1.4mm (Mechanical Surface Detection)
- Electronics: DAE4 Sn918; Calibrated: 2018/6/20
- Phantom: SAM\_Left; Type: QD000P40CD; Serial: S/N:1801
- Measurement SW: DASY52, Version 52.10 (1); SEMCAD X Version 14.6.11 (7439)

**Area Scan (61x81x1):** Interpolated grid: dx=1.500 mm, dy=1.500 mm

Maximum value of SAR (interpolated) = 1.52 W/kg

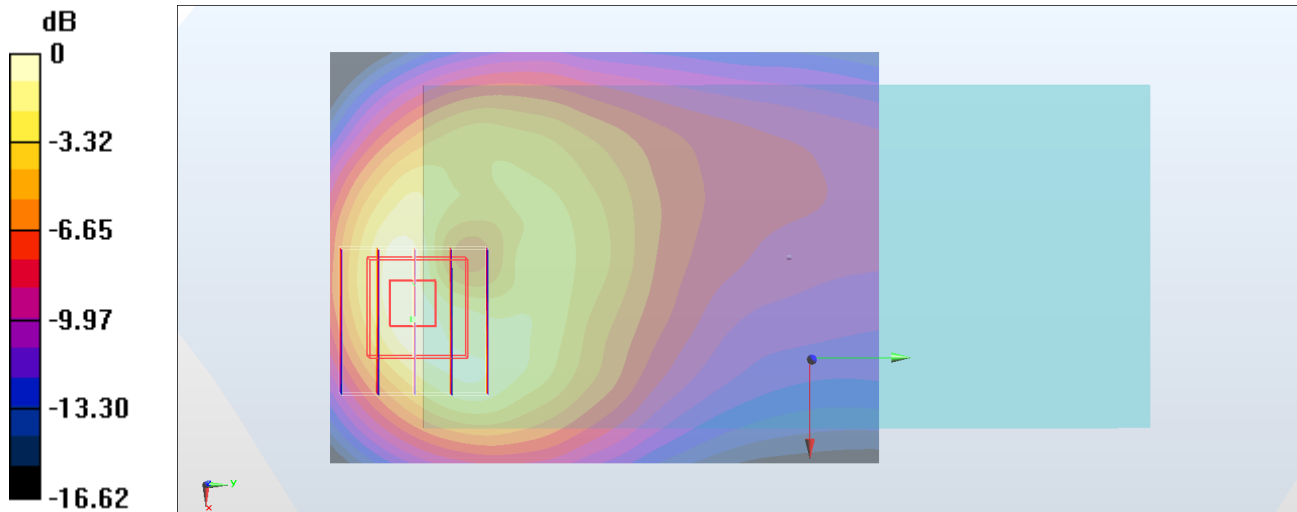
**Zoom Scan (5x5x7)/Cube 0:** Measurement grid: dx=8mm, dy=8mm, dz=5mm

Reference Value = 22.44 V/m; Power Drift = -0.10 dB

Peak SAR (extrapolated) = 2.12 W/kg

**SAR(1 g) = 1.12 W/kg; SAR(10 g) = 0.598 W/kg**

Maximum value of SAR (measured) = 1.80 W/kg



0 dB = 1.52 W/kg = 1.82 dBW/kg

**#34\_GSM1900\_GPRS (2 Tx slots)\_Back\_5mm\_Ch810**

Communication System: PCS; Frequency: 1909.8 MHz; Duty Cycle: 1:4.15

Medium: HSL\_1900\_190528 Medium parameters used:  $f = 1910$  MHz;  $\sigma = 1.418$  S/m;  $\epsilon_r = 40.499$ ;  $\rho = 1000$  kg/m<sup>3</sup>

Ambient Temperature : 23.6 °C ; Liquid Temperature : 22.6 °C

DASY5 Configuration:

- Probe: EX3DV4 - SN7350; ConvF(8.24, 8.24, 8.24) ; Calibrated: 2018/12/14
- Sensor-Surface: 1.4mm (Mechanical Surface Detection)
- Electronics: DAE3 Sn360; Calibrated: 2018/10/29
- Phantom: SAM LEFT; Type: QD000P40CD; Serial: TP:1718
- Measurement SW: DASY52, Version 52.10 (1); SEMCAD X Version 14.6.11 (7439)

**Area Scan (61x61x1):** Interpolated grid: dx=1.500 mm, dy=1.500 mm

Maximum value of SAR (interpolated) = 1.60 W/kg

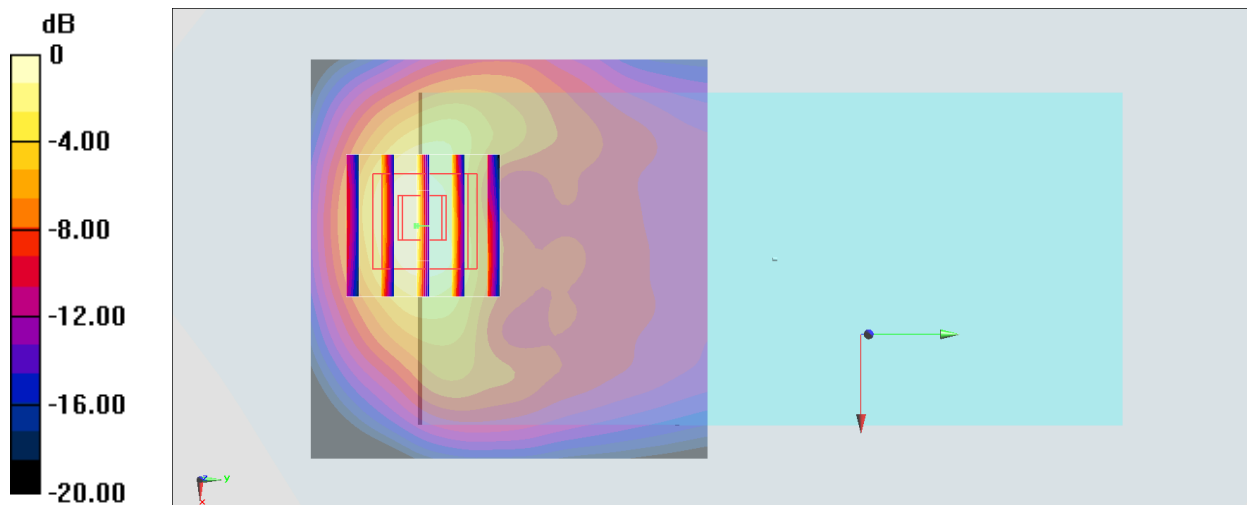
**Zoom Scan (5x5x7)/Cube 0:** Measurement grid: dx=8mm, dy=8mm, dz=5mm

Reference Value = 26.43 V/m; Power Drift = -0.17 dB

Peak SAR (extrapolated) = 2.46 W/kg

**SAR(1 g) = 1.23 W/kg; SAR(10 g) = 0.586 W/kg**

Maximum value of SAR (measured) = 1.93 W/kg



### #35\_WCDMA II\_RMC 12.2Kbps\_Back\_5mm\_Ch9400

Communication System: WCDMA ; Frequency: 1880 MHz;Duty Cycle: 1:1

Medium: HSL\_1900\_190528 Medium parameters used:  $f = 1880$  MHz;  $\sigma = 1.387$  S/m;  $\epsilon_r = 40.611$ ;  $\rho = 1000$  kg/m<sup>3</sup>

Ambient Temperature : 23.6 °C ; Liquid Temperature : 22.6 °C

DASY5 Configuration:

- Probe: EX3DV4 - SN7350; ConvF(8.24, 8.24, 8.24) ; Calibrated: 2018/12/14
- Sensor-Surface: 1.4mm (Mechanical Surface Detection)
- Electronics: DAE3 Sn360; Calibrated: 2018/10/29
- Phantom: SAM LEFT; Type: QD000P40CD; Serial: TP:1718
- Measurement SW: DASY52, Version 52.10 (1);SEMCAD X Version 14.6.11 (7439)

**Area Scan (61x61x1):** Interpolated grid: dx=1.500 mm, dy=1.500 mm

Maximum value of SAR (interpolated) = 1.32 W/kg

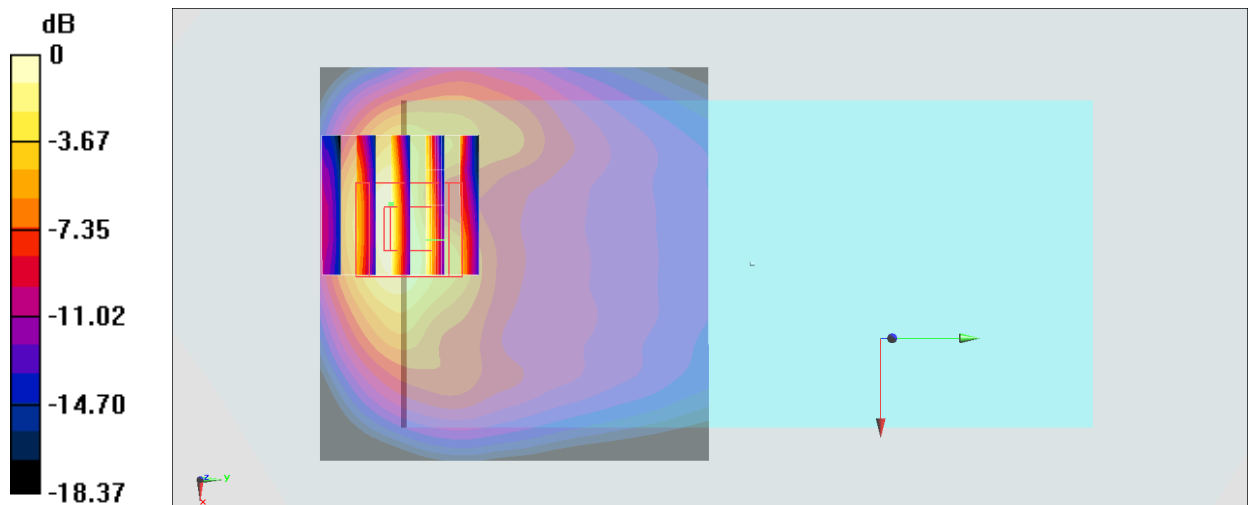
**Zoom Scan (5x5x7)/Cube 0:** Measurement grid: dx=8mm, dy=8mm, dz=5mm

Reference Value = 12.62 V/m; Power Drift = 0.05 dB

Peak SAR (extrapolated) = 2.01 W/kg

**SAR(1 g) = 1.021 W/kg; SAR(10 g) = 0.454 W/kg**

Maximum value of SAR (measured) = 1.34 W/kg



0 dB = 1.32 W/kg = 1.21 dBW/kg

**#36\_WCDMA IV\_RMC 12.2Kbps\_Back\_5mm\_Ch1312**

Communication System: WCDMA ; Frequency: 1712.4 MHz; Duty Cycle: 1:1

Medium: HSL\_1750\_190528 Medium parameters used :  $f = 1712.4$  MHz;  $\sigma = 1.358$  S/m;  $\epsilon_r = 41.784$ ;  $\rho = 1000$  kg/m<sup>3</sup>

Ambient Temperature : 23.6 °C ; Liquid Temperature : 22.6 °C

DASY5 Configuration:

- Probe: EX3DV4 - SN7350; ConvF(8.63, 8.63, 8.63) ; Calibrated: 2018/12/14
- Sensor-Surface: 1.4mm (Mechanical Surface Detection)
- Electronics: DAE3 Sn360; Calibrated: 2018/10/29
- Phantom: SAM LEFT; Type: QD000P40CD; Serial: TP:1718
- Measurement SW: DASY52, Version 52.10 (1); SEMCAD X Version 14.6.11 (7439)

**Area Scan (61x61x1):** Interpolated grid: dx=1.500 mm, dy=1.500 mm

Maximum value of SAR (interpolated) = 1.30 W/kg

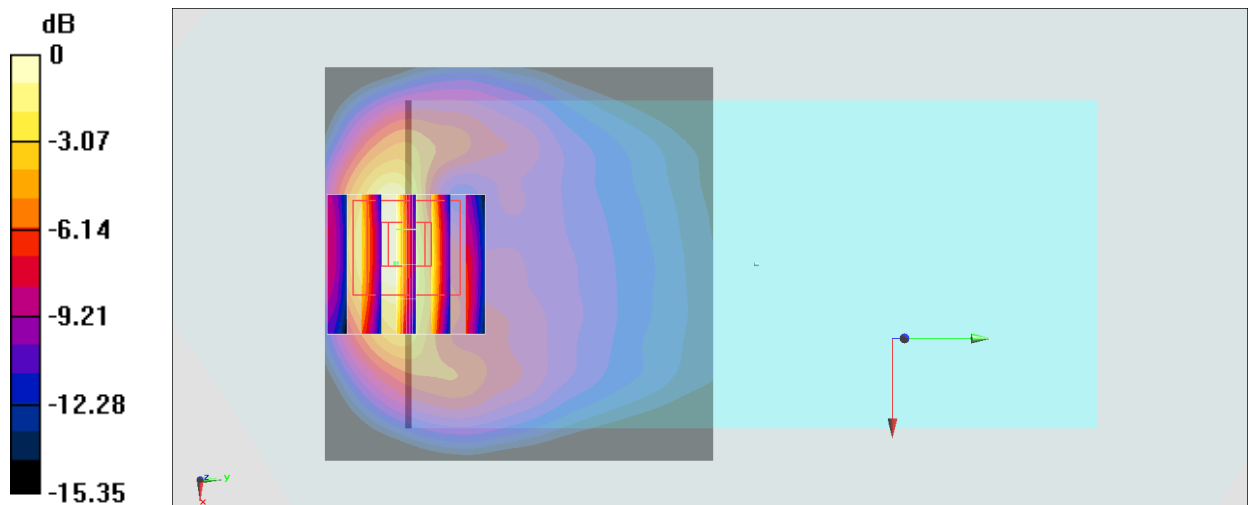
**Zoom Scan (5x5x7)/Cube 0:** Measurement grid: dx=8mm, dy=8mm, dz=5mm

Reference Value = 15.08 V/m; Power Drift = 0.14 dB

Peak SAR (extrapolated) = 1.69 W/kg

**SAR(1 g) = 0.863 W/kg; SAR(10 g) = 0.423 W/kg**

Maximum value of SAR (measured) = 1.28 W/kg



0 dB = 1.30 W/kg = 1.14 dBW/kg

**#37\_WCDMA V\_RMC 12.2Kbps\_Back\_5mm\_Ch4233**

Communication System: WCDMA ; Frequency: 846.6 MHz; Duty Cycle: 1:1

Medium: HSL\_850\_190530 Medium parameters used:  $f = 847$  MHz;  $\sigma = 0.901$  S/m;  $\epsilon_r = 42.254$ ;  $\rho = 1000$  kg/m<sup>3</sup>

Ambient Temperature : 23.5 °C ; Liquid Temperature : 22.5 °C

**DASY5 Configuration**

- Probe: EX3DV4 - SN7515; ConvF(9.75, 9.75, 9.75) ; Calibrated: 2018/10/3
- Sensor-Surface: 1.4mm (Mechanical Surface Detection)
- Electronics: DAE4 Sn918; Calibrated: 2018/6/20
- Phantom: SAM\_Left; Type: QD000P40CD; Serial: S/N:1801
- Measurement SW: DASY52, Version 52.10 (1); SEMCAD X Version 14.6.11 (7439)

**Area Scan (61x101x1):** Interpolated grid: dx=1.500 mm, dy=1.500 mm

Maximum value of SAR (interpolated) = 1.45 W/kg

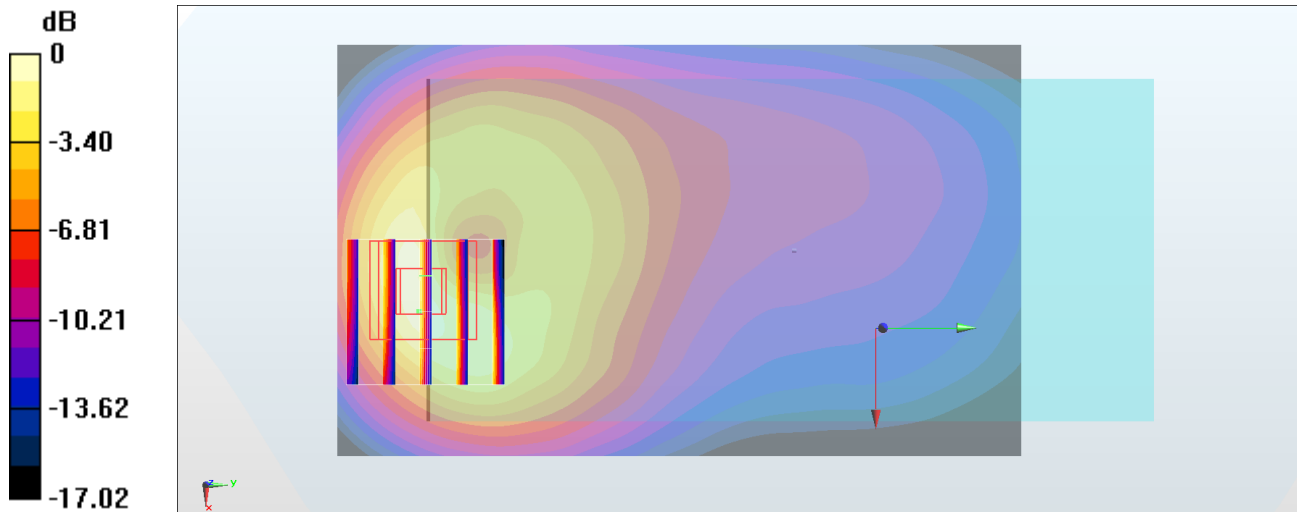
**Zoom Scan (5x5x7)/Cube 0:** Measurement grid: dx=8mm, dy=8mm, dz=5mm

Reference Value = 25.80 V/m; Power Drift = -0.06 dB

Peak SAR (extrapolated) = 1.96 W/kg

**SAR(1 g) = 1.01 W/kg; SAR(10 g) = 0.538 W/kg**

Maximum value of SAR (measured) = 1.65 W/kg



### #38\_LTE Band 2\_20M\_QPSK\_1\_0\_Back\_5mm\_Ch19100

Communication System: LTE ; Frequency: 1900 MHz;Duty Cycle: 1:1

Medium: HSL\_1900\_190527 Medium parameters used:  $f = 1900$  MHz;  $\sigma = 1.421$  S/m;  $\epsilon_r = 40.705$ ;  $\rho = 1000$  kg/m<sup>3</sup>

Ambient Temperature : 23.7 °C ; Liquid Temperature : 22.7 °C

DASY5 Configuration:

- Probe: EX3DV4 - SN7350; ConvF(8.24, 8.24, 8.24) ; Calibrated: 2018/12/14
- Sensor-Surface: 1.4mm (Mechanical Surface Detection)
- Electronics: DAE3 Sn360; Calibrated: 2018/10/29
- Phantom: SAM LEFT; Type: QD000P40CD; Serial: TP:1718
- Measurement SW: DASY52, Version 52.10 (1);SEMCAD X Version 14.6.11 (7439)

**Area Scan (61x61x1):** Interpolated grid: dx=1.500 mm, dy=1.500 mm

Maximum value of SAR (interpolated) = 1.38 W/kg

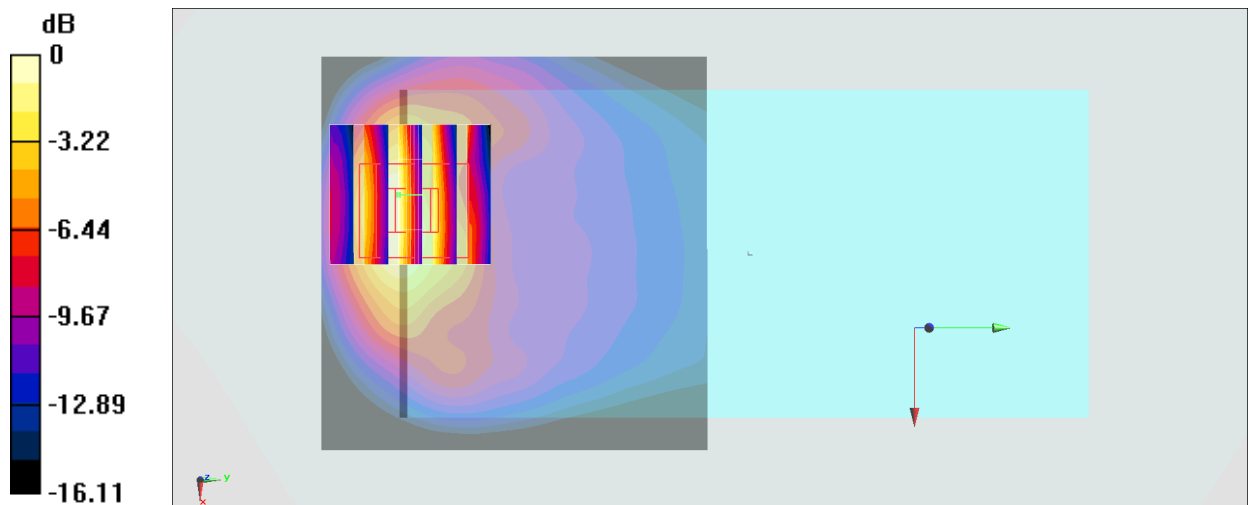
**Zoom Scan (5x5x7)/Cube 0:** Measurement grid: dx=8mm, dy=8mm, dz=5mm

Reference Value = 31.46 V/m; Power Drift = -0.06 dB

Peak SAR (extrapolated) = 2.06 W/kg

**SAR(1 g) = 0.986 W/kg; SAR(10 g) = 0.457 W/kg**

Maximum value of SAR (measured) = 1.46 W/kg



0 dB = 1.38 W/kg = 1.40 dBW/kg

**#39\_LTE Band 4\_20M\_QPSK\_1\_0\_Back\_5mm\_Ch20175**

Communication System: LTE ; Frequency: 1732.5 MHz;Duty Cycle: 1:1

Medium: HSL\_1750\_190527 Medium parameters used:  $f = 1733$  MHz;  $\sigma = 1.362$  S/m;  $\epsilon_r = 41.487$ ;  $\rho = 1000$  kg/m<sup>3</sup>

Ambient Temperature : 23.7 °C ; Liquid Temperature : 22.7 °C

DASY5 Configuration:

- Probe: EX3DV4 - SN7350; ConvF(8.63, 8.63, 8.63) ; Calibrated: 2018/12/14
- Sensor-Surface: 1.4mm (Mechanical Surface Detection)
- Electronics: DAE3 Sn360; Calibrated: 2018/10/29
- Phantom: SAM LEFT; Type: QD000P40CD; Serial: TP:1718
- Measurement SW: DASY52, Version 52.10 (1);SEMCAD X Version 14.6.11 (7439)

**Area Scan (61x61x1):** Interpolated grid: dx=1.500 mm, dy=1.500 mm

Maximum value of SAR (interpolated) = 1.67 W/kg

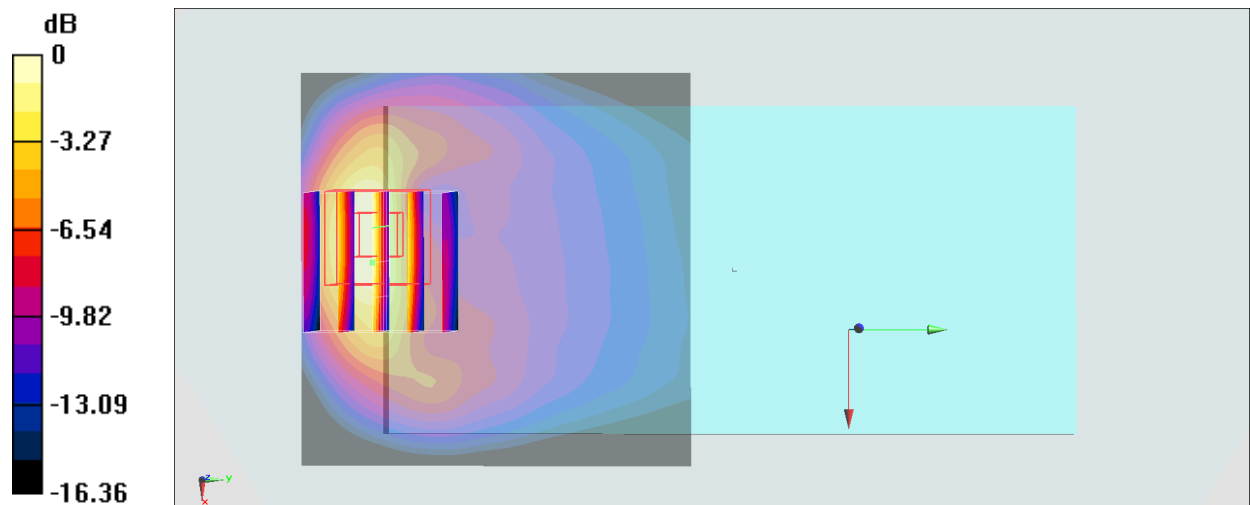
**Zoom Scan (5x5x7)/Cube 0:** Measurement grid: dx=8mm, dy=8mm, dz=5mm

Reference Value = 27.57 V/m; Power Drift = -0.18 dB

Peak SAR (extrapolated) = 2.30 W/kg

**SAR(1 g) = 1.18 W/kg; SAR(10 g) = 0.568 W/kg**

Maximum value of SAR (measured) = 1.85 W/kg



0 dB = 1.67 W/kg = 2.23 dBW/kg

**#40\_LTE Band 5\_10M\_QPSK\_25\_0\_Back\_5mm\_Ch20525**

Communication System: LTE; Frequency: 836.5 MHz; Duty Cycle: 1:1

Medium: HSL\_850\_190530 Medium parameters used :  $f = 836.5$  MHz;  $\sigma = 0.891$  S/m;  $\epsilon_r = 42.409$ ;  $\rho = 1000$  kg/m<sup>3</sup>

Ambient Temperature : 23.5 °C ; Liquid Temperature : 22.5 °C

**DASY5 Configuration**

- Probe: EX3DV4 - SN7515; ConvF(9.75, 9.75, 9.75) ; Calibrated: 2018/10/3
- Sensor-Surface: 1.4mm (Mechanical Surface Detection)
- Electronics: DAE4 Sn918; Calibrated: 2018/6/20
- Phantom: SAM\_Left; Type: QD000P40CD; Serial: S/N:1801
- Measurement SW: DASY52, Version 52.10 (1); SEMCAD X Version 14.6.11 (7439)

**Area Scan (61x81x1):** Interpolated grid: dx=1.500 mm, dy=1.500 mm

Maximum value of SAR (interpolated) = 1.45 W/kg

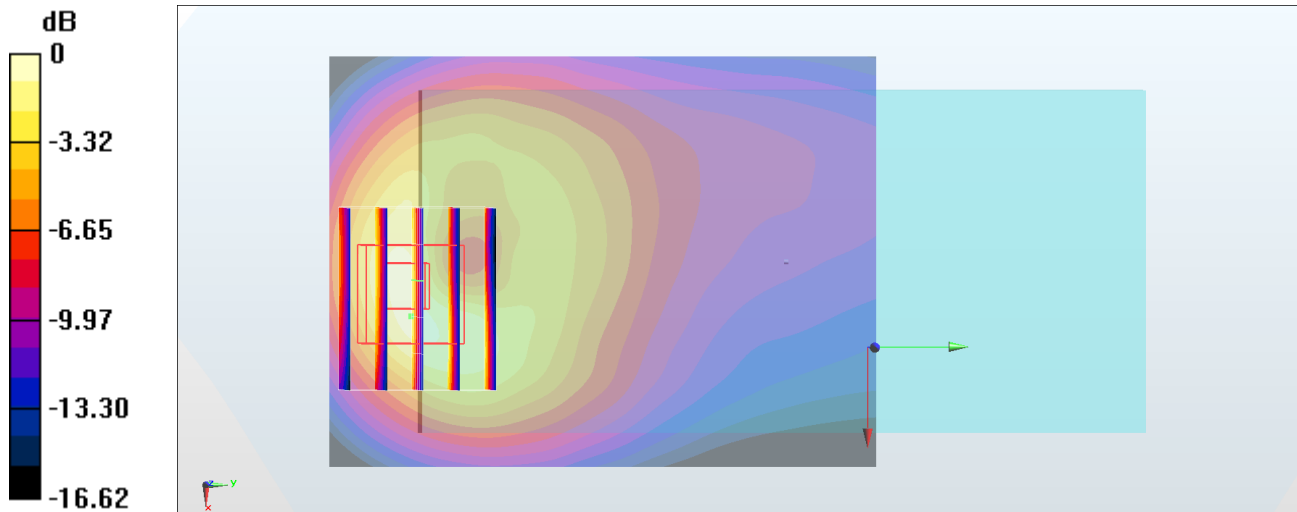
**Zoom Scan (6x5x7)/Cube 0:** Measurement grid: dx=8mm, dy=8mm, dz=5mm

Reference Value = 30.37 V/m; Power Drift = -0.02 dB

Peak SAR (extrapolated) = 1.98 W/kg

**SAR(1 g) = 0.997 W/kg; SAR(10 g) = 0.524 W/kg**

Maximum value of SAR (measured) = 1.65 W/kg



0 dB = 1.65 W/kg = 2.17 dBW/kg

**#41\_LTE Band 7\_20M\_QPSK\_50\_0\_Back\_5mm\_Ch21350**

Communication System: LTE; Frequency: 2560 MHz; Duty Cycle: 1:1

Medium: HSL\_2600\_190530 Medium parameters used:  $f = 2560$  MHz;  $\sigma = 1.981$  S/m;  $\epsilon_r = 39.514$ ;  $\rho = 1000$  kg/m<sup>3</sup>

Ambient Temperature : 23.4 °C ; Liquid Temperature : 22.4 °C

DASY5 Configuration:

- Probe: EX3DV4 - SN7350; ConvF(7.35, 7.35, 7.35) ; Calibrated: 2018/12/14
- Sensor-Surface: 1.4mm (Mechanical Surface Detection)
- Electronics: DAE3 Sn360; Calibrated: 2018/10/29
- Phantom: SAM LEFT; Type: QD000P40CD; Serial: TP:1718
- Measurement SW: DASY52, Version 52.10 (1); SEMCAD X Version 14.6.11 (7439)

**Area Scan (81x71x1):** Interpolated grid: dx=1.200 mm, dy=1.200 mm

Maximum value of SAR (interpolated) = 2.08 W/kg

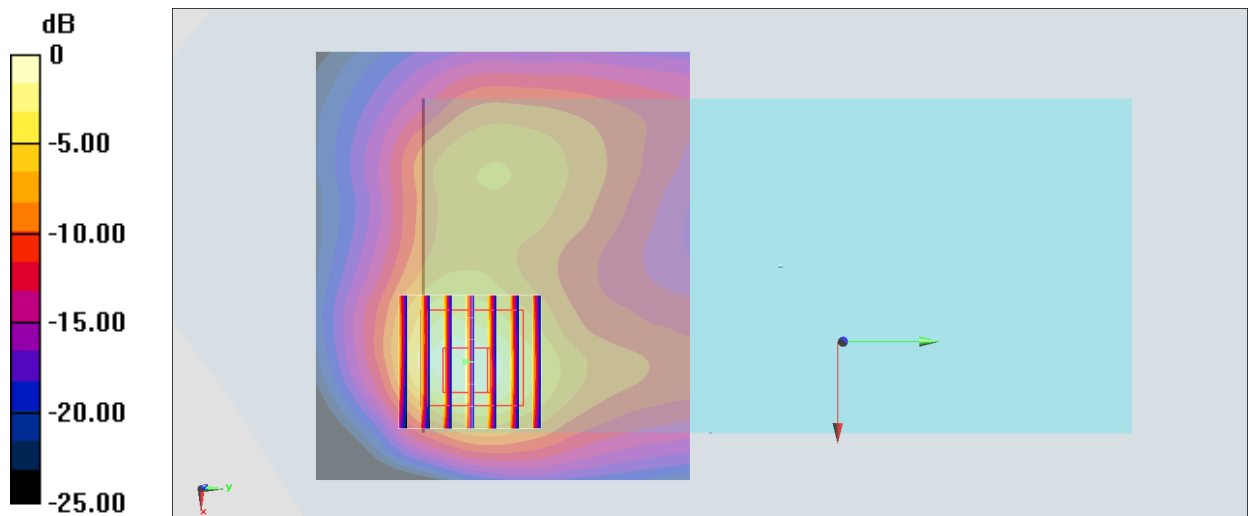
**Zoom Scan (7x7x7)/Cube 0:** Measurement grid: dx=5mm, dy=5mm, dz=5mm

Reference Value = 22.73 V/m; Power Drift = -0.13 dB

Peak SAR (extrapolated) = 2.82 W/kg

**SAR(1 g) = 1.05 W/kg; SAR(10 g) = 0.446 W/kg**

Maximum value of SAR (measured) = 2.02 W/kg



**#42\_LTE Band 12\_10M\_QPSK\_1\_0\_Back\_5mm\_Ch23095**

Communication System: LTE ; Frequency: 707.5 MHz; Duty Cycle: 1:1

Medium: HSL\_750\_190519 Medium parameters used:  $f = 707.5$  MHz;  $\sigma = 0.853$  S/m;  $\epsilon_r = 41.036$ ;  $\rho = 1000$  kg/m<sup>3</sup>

Ambient Temperature : 23.7 °C ; Liquid Temperature : 22.7 °C

DASY5 Configuration:

- Probe: EX3DV4 - SN3642; ConvF(9.16, 9.16, 9.16) ; Calibrated: 2019/4/29
- Sensor-Surface: 1.4mm (Mechanical Surface Detection)
- Electronics: DAE4 Sn699; Calibrated: 2019/1/3
- Phantom: SAM\_Left; Type: QD000P40CD; Serial: TP:1815
- Measurement SW: DASY52, Version 52.10 (1); SEMCAD X Version 14.6.11 (7439)

**Area Scan (61x61x1):** Interpolated grid: dx=1.500 mm, dy=1.500 mm

Maximum value of SAR (interpolated) = 1.34 W/kg

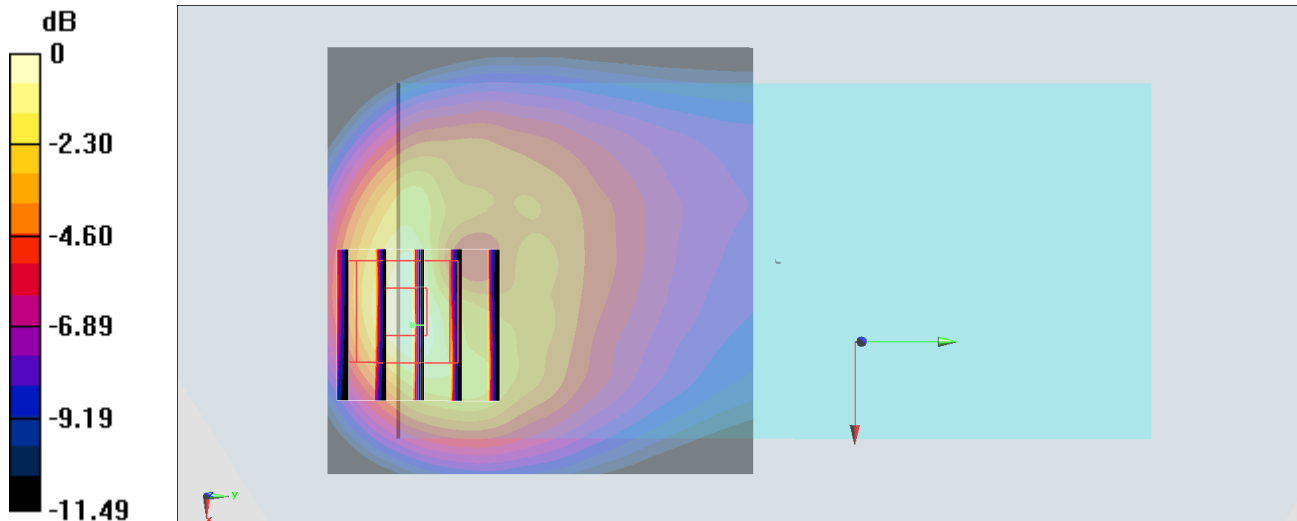
**Zoom Scan (5x5x7)/Cube 0:** Measurement grid: dx=8mm, dy=8mm, dz=5mm

Reference Value = 25.22 V/m; Power Drift = -0.13 dB

Peak SAR (extrapolated) = 1.58 W/kg

**SAR(1 g) = 0.747 W/kg; SAR(10 g) = 0.393 W/kg**

Maximum value of SAR (measured) = 1.26 W/kg



0 dB = 1.26 W/kg = 1.00 dBW/kg

**#43\_LTE Band 66\_20M\_QPSK\_1\_0\_Back\_5mm\_Ch132572**

Communication System: LTE ; Frequency: 1770 MHz;Duty Cycle: 1:1

Medium: HSL\_1750\_190527 Medium parameters used:  $f = 1770$  MHz;  $\sigma = 1.392$  S/m;  $\epsilon_r = 41.398$ ;  $\rho = 1000$  kg/m<sup>3</sup>

Ambient Temperature : 23.7 °C ; Liquid Temperature : 22.7 °C

DASY5 Configuration:

- Probe: EX3DV4 - SN7350; ConvF(8.63, 8.63, 8.63) ; Calibrated: 2018/12/14
- Sensor-Surface: 1.4mm (Mechanical Surface Detection)
- Electronics: DAE3 Sn360; Calibrated: 2018/10/29
- Phantom: SAM LEFT; Type: QD000P40CD; Serial: TP:1718
- Measurement SW: DASY52, Version 52.10 (1);SEMCAD X Version 14.6.11 (7439)

**Area Scan (61x61x1):** Interpolated grid: dx=1.500 mm, dy=1.500 mm

Maximum value of SAR (interpolated) = 1.63 W/kg

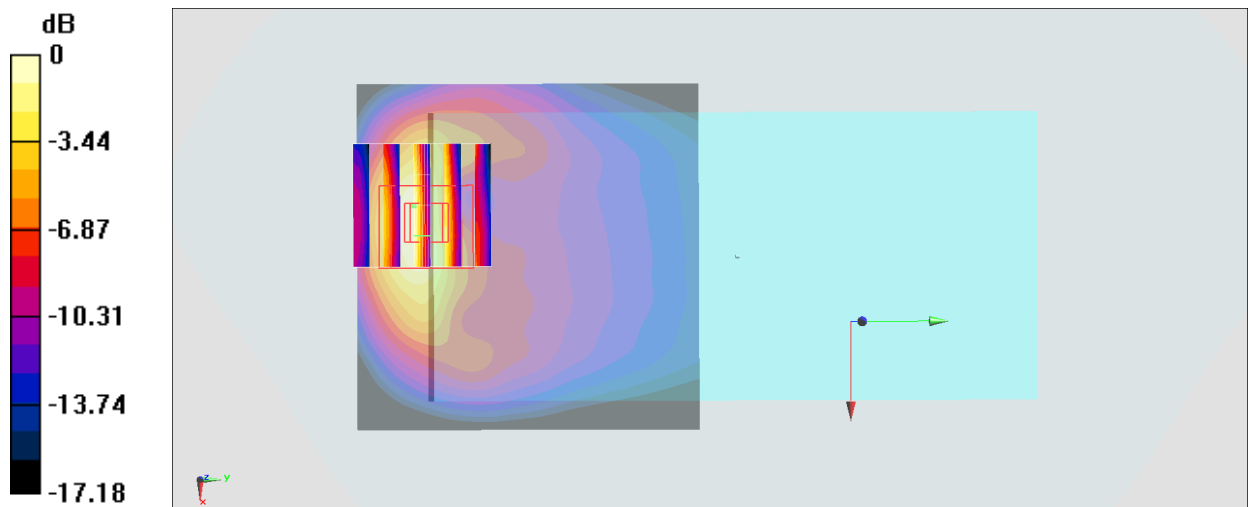
**Zoom Scan (5x5x7)/Cube 0:** Measurement grid: dx=8mm, dy=8mm, dz=5mm

Reference Value = 27.49 V/m; Power Drift = -0.04 dB

Peak SAR (extrapolated) = 2.26 W/kg

**SAR(1 g) = 1.12 W/kg; SAR(10 g) = 0.534 W/kg**

Maximum value of SAR (measured) = 1.54 W/kg



0 dB = 1.63 W/kg = 2.12 dBW/kg

**#44\_LTE Band 41\_20M\_QPSK\_1\_0\_Back\_5mm\_Ch41140**

Communication System: LTE TDD ; Frequency: 2645 MHz; Duty Cycle: 1:1.59

Medium: HSL\_2600\_190530 Medium parameters used :  $f = 2645$  MHz;  $\sigma = 2.062$  S/m;  $\epsilon_r = 39.229$ ;  $\rho = 1000$  kg/m<sup>3</sup>

Ambient Temperature : 23.4 °C ; Liquid Temperature : 22.4 °C

DASY5 Configuration:

- Probe: EX3DV4 - SN7350; ConvF(7.35, 7.35, 7.35) ; Calibrated: 2018/12/14
- Sensor-Surface: 1.4mm (Mechanical Surface Detection)
- Electronics: DAE3 Sn360; Calibrated: 2018/10/29
- Phantom: SAM LEFT; Type: QD000P40CD; Serial: TP:1718
- Measurement SW: DASY52, Version 52.10 (1); SEMCAD X Version 14.6.11 (7439)

**Area Scan (81x71x1):** Interpolated grid: dx=1.200 mm, dy=1.200 mm

Maximum value of SAR (interpolated) = 2.14 W/kg

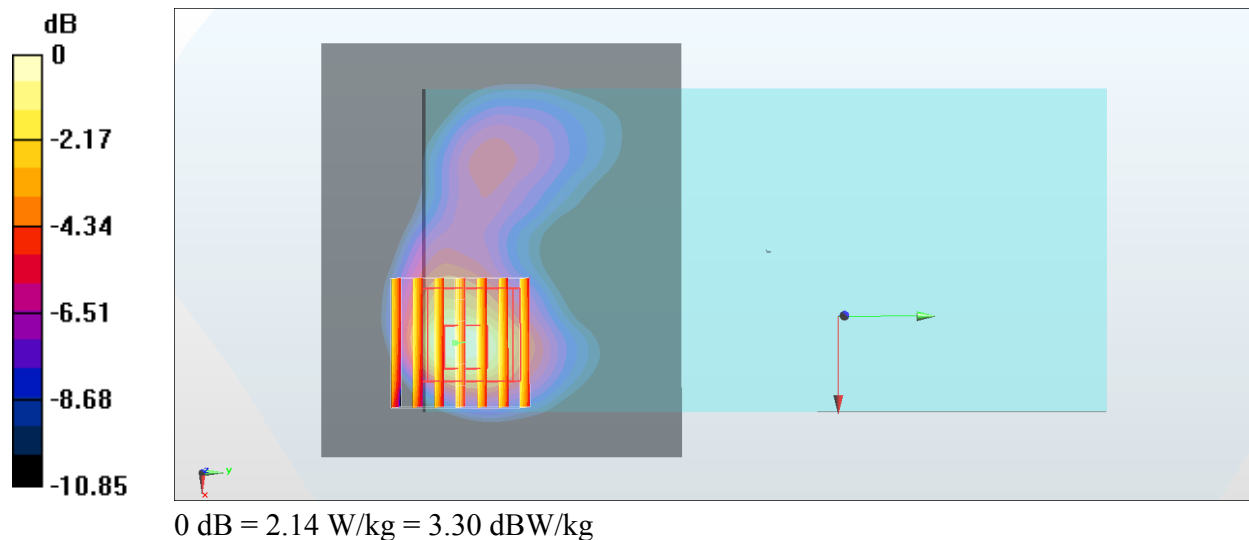
**Zoom Scan (7x7x7)/Cube 0:** Measurement grid: dx=5mm, dy=5mm, dz=5mm

Reference Value = 23.15 V/m; Power Drift = -0.00 dB

Peak SAR (extrapolated) = 2.81 W/kg

**SAR(1 g) = 1.06 W/kg; SAR(10 g) = 0.439 W/kg**

Maximum value of SAR (measured) = 2.02 W/kg



### #45\_WLAN2.4GHz\_802.11b 1Mbps\_Front\_5mm\_Ch6

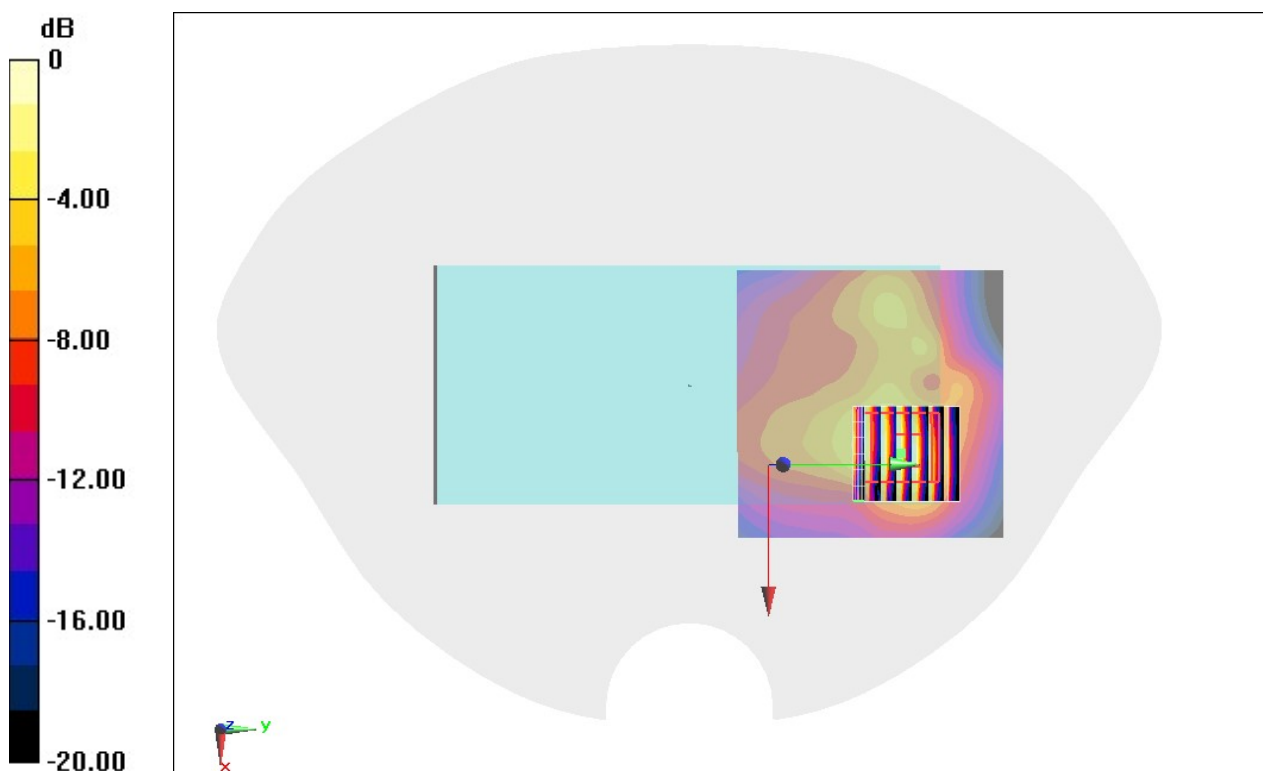
Communication System: 802.11b ; Frequency: 2437 MHz;Duty Cycle: 1:1.012  
Medium: HSL\_2450\_190518 Medium parameters used :  $f = 2437$  MHz;  $\sigma = 1.781$  S/m;  $\epsilon_r = 39.931$ ;  
 $\rho = 1000$  kg/m<sup>3</sup>  
Ambient Temperature : 23.4 °C ; Liquid Temperature : 22.4 °C

#### DASY5 Configuration

- Probe: EX3DV4 - SN7306;ConvF(7.43, 7.43, 7.43) ;Calibrated: 2018/7/26
- Sensor-Surface: 1.4mm (Mechanical Surface Detection)
- Electronics: DAE3 Sn360; Calibrated: 2018/10/29
- Phantom: Twin-SAM V5.0 (30deg probe tilt); Type: QD 000 P40 CD; Serial: 1885
- Measurement SW: DASY52, Version 52.10 (2); SEMCAD X Version 14.6.12 (7450)

**Area Scan (71x71x1):** Interpolated grid: dx=1.200 mm, dy=1.200 mm  
Maximum value of SAR (interpolated) = 0.664 W/kg

**Zoom Scan (7x7x7)/Cube 0:** Measurement grid: dx=5mm, dy=5mm, dz=5mm  
Reference Value = 12.44 V/m; Power Drift = -0.11 dB  
Peak SAR (extrapolated) = 0.887 W/kg  
**SAR(1 g) = 0.425 W/kg; SAR(10 g) = 0.188 W/kg**  
Maximum value of SAR (measured) = 0.700 W/kg



0 dB = 0.700 W/kg = -1.55 dBW/kg

**#46\_WLAN5GHz\_802.11a 6Mbps\_Back\_5mm\_Ch52**

Communication System: 802.11a ; Frequency: 5260 MHz;Duty Cycle: 1:1.019

Medium: HSL\_5G\_190518 Medium parameters used :  $f = 5260$  MHz;  $\sigma = 4.642$  S/m;  $\epsilon_r = 36.141$ ;  $\rho = 1000$  kg/m<sup>3</sup>

Ambient Temperature : 23.4 °C ; Liquid Temperature : 22.4 °C

DASY5 Configuration:

- Probe: EX3DV4 - SN7306;ConvF(5.38, 5.38, 5.38) ;Calibrated: 2018/7/26
- Sensor-Surface: 1.4mm (Mechanical Surface Detection)
- Electronics: DAE3 Sn360; Calibrated: 2018/10/29
- Phantom: Twin-SAM V5.0 (30deg probe tilt); Type: QD 000 P40 CD; Serial: 1885
- Measurement SW: DASY52, Version 52.10 (2); SEMCAD X Version 14.6.12 (7450)

**Area Scan (101x101x1):** Interpolated grid: dx=1.000 mm, dy=1.000 mm

Maximum value of SAR (interpolated) = 0.901 W/kg

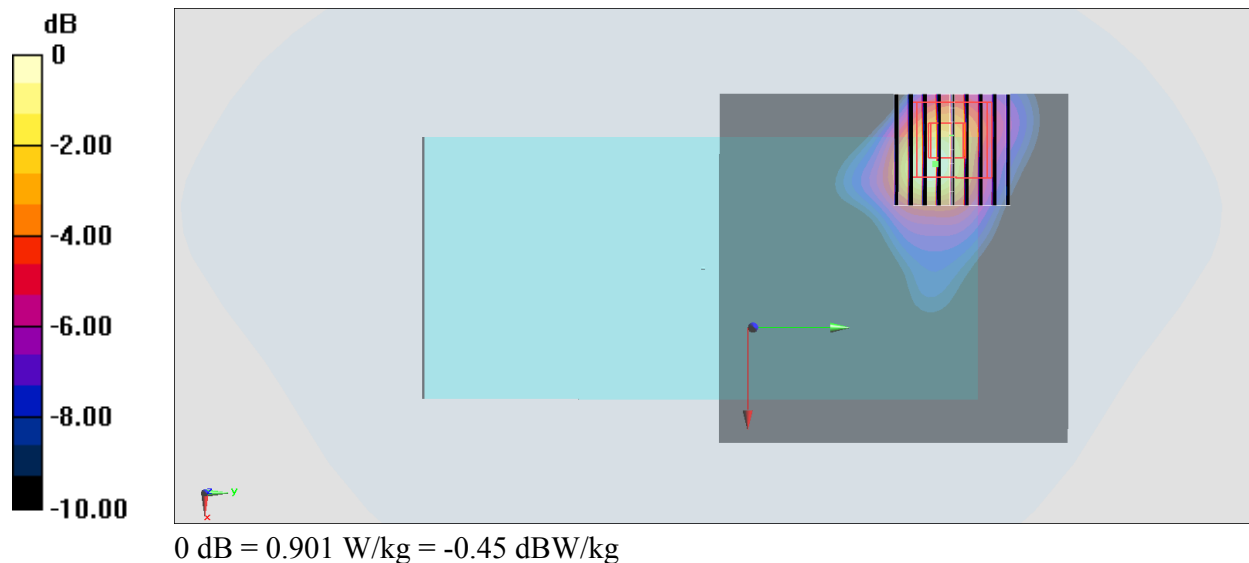
**Zoom Scan (9x9x7)/Cube 0:** Measurement grid: dx=4mm, dy=4mm, dz=1.4mm

Reference Value = 12.90 V/m; Power Drift = -0.17 dB

Peak SAR (extrapolated) = 2.72 W/kg

**SAR(1 g) = 0.647 W/kg; SAR(10 g) = 0.179 W/kg**

Maximum value of SAR (measured) = 1.62 W/kg



## #47\_WLAN5GHz\_802.11a\_6Mbps\_Back\_5mm\_Ch116

Communication System: 802.11a ; Frequency: 5580 MHz; Duty Cycle: 1:1.019

Medium: HSL\_5G\_190521 Medium parameters used:  $f = 5580$  MHz;  $\sigma = 4.87$  S/m;  $\epsilon_r = 36.234$ ;  $\rho = 1000$  kg/m<sup>3</sup>

Ambient Temperature : 23.5 °C ; Liquid Temperature : 22.5 °C

### DASY5 Configuration

- Probe: EX3DV4 - SN3642; ConvF(4.28, 4.28, 4.28) ; Calibrated: 2019/4/29
- Sensor-Surface: 1.4mm (Mechanical Surface Detection)
- Electronics: DAE4 Sn914; Calibrated: 2018/12/11
- Phantom: SAM\_Left; Type: QD000P40CD; Serial: S/N:1801
- Measurement SW: DASY52, Version 52.10 (1); SEMCAD X Version 14.6.11 (7439)

**Area Scan (101x101x1):** Interpolated grid: dx=1.000 mm, dy=1.000 mm

Maximum value of SAR (interpolated) = 1.06 W/kg

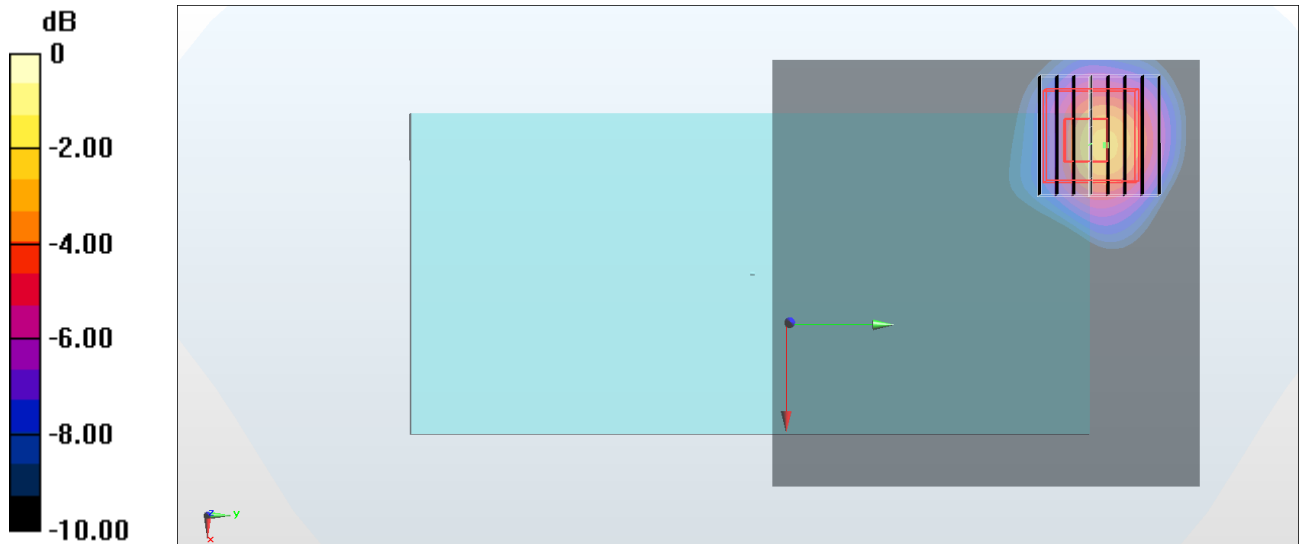
**Zoom Scan (8x8x7)/Cube 0:** Measurement grid: dx=4mm, dy=4mm, dz=1.4mm

Reference Value = 11.05 V/m; Power Drift = -0.02 dB

Peak SAR (extrapolated) = 3.04 W/kg

**SAR(1 g) = 0.727 W/kg; SAR(10 g) = 0.212 W/kg**

Maximum value of SAR (measured) = 1.81 W/kg



0 dB = 1.81 W/kg = 2.58 dBW/kg

## #48\_WLAN5GHz\_802.11a\_6Mbps\_Back\_5mm\_Ch149

Communication System: 802.11a ; Frequency: 5745 MHz;Duty Cycle: 1:1.019

Medium: HSL\_5G\_190521 Medium parameters used :  $f = 5745$  MHz;  $\sigma = 5.038$  S/m;  $\epsilon_r = 36.02$ ;  $\rho = 1000$  kg/m<sup>3</sup>

Ambient Temperature : 23.5 °C ; Liquid Temperature : 22.5 °C

### DASY5 Configuration

- Probe: EX3DV4 - SN3642;ConvF(4.36, 4.36, 4.36) ;Calibrated: 2019/4/29
- Sensor-Surface: 1.4mm (Mechanical Surface Detection)
- Electronics: DAE4 Sn914; Calibrated: 2018/12/11
- Phantom: SAM\_Left; Type: QD000P40CD; Serial: S/N:1801
- Measurement SW: DASY52, Version 52.10 (1); SEMCAD X Version 14.6.11 (7439)

**Area Scan (101x101x1):** Interpolated grid: dx=1.000 mm, dy=1.000 mm

Maximum value of SAR (interpolated) = 1.67 W/kg

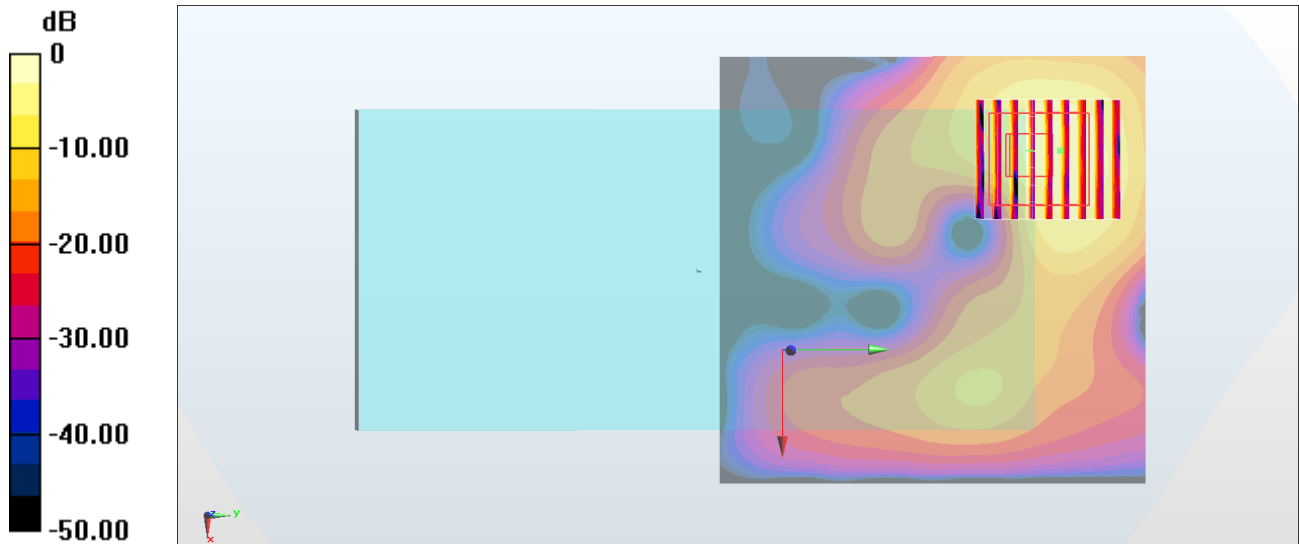
**Zoom Scan (8x9x7)/Cube 0:** Measurement grid: dx=4mm, dy=4mm, dz=1.4mm

Reference Value = 22.57 V/m; Power Drift = 0.16 dB

Peak SAR (extrapolated) = 6.04 W/kg

**SAR(1 g) = 1.33 W/kg; SAR(10 g) = 0.367 W/kg**

Maximum value of SAR (measured) = 3.56 W/kg



0 dB = 3.56 W/kg = 5.51 dBW/kg

### #49\_Bluetooth\_1Mbps\_Front\_5mm\_Ch0

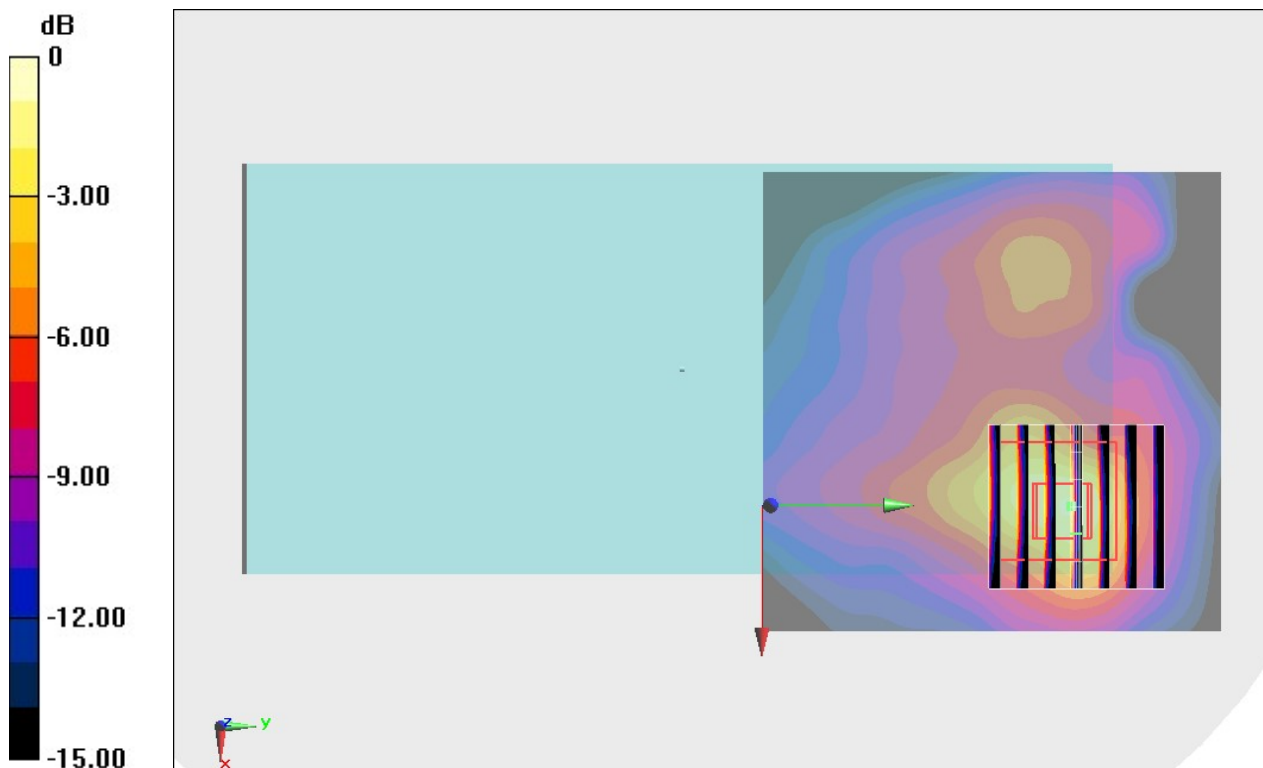
Communication System: Bluetooth ; Frequency: 2402 MHz;Duty Cycle: 1:1.297  
Medium: HSL\_2450\_190518 Medium parameters used :  $f = 2402$  MHz;  $\sigma = 1.738$  S/m;  $\epsilon_r = 40.064$ ;  
 $\rho = 1000$  kg/m<sup>3</sup>  
Ambient Temperature : 23.4 °C ; Liquid Temperature : 22.4 °C

#### DASY5 Configuration

- Probe: EX3DV4 - SN7306;ConvF(7.43, 7.43, 7.43) ;Calibrated: 2018/7/26
- Sensor-Surface: 1.4mm (Mechanical Surface Detection)
- Electronics: DAE3 Sn360; Calibrated: 2018/10/29
- Phantom: Twin-SAM V5.0 (30deg probe tilt); Type: QD 000 P40 CD; Serial: 1885
- Measurement SW: DASY52, Version 52.10 (2); SEMCAD X Version 14.6.12 (7450)

**Area Scan (71x71x1):** Interpolated grid: dx=1.200 mm, dy=1.200 mm  
Maximum value of SAR (interpolated) = 0.0921 W/kg

**Zoom Scan (7x7x7)/Cube 0:** Measurement grid: dx=5mm, dy=5mm, dz=5mm  
Reference Value = 4.130 V/m; Power Drift = 0.10 dB  
Peak SAR (extrapolated) = 0.144 W/kg  
**SAR(1 g) = 0.067 W/kg; SAR(10 g) = 0.029 W/kg**  
Maximum value of SAR (measured) = 0.113 W/kg



0 dB = 0.113 W/kg = -9.47 dBW/kg

## #50\_GSM850\_GPRS (2 Tx slots)\_Front\_0mm\_Ch128

Communication System: GSM850 ; Frequency: 824.2 MHz; Duty Cycle: 1:4.15

Medium: HSL\_850\_190530 Medium parameters used :  $f = 824.2$  MHz;  $\sigma = 0.88$  S/m;  $\epsilon_r = 42.583$ ;  $\rho = 1000$  kg/m<sup>3</sup>

Ambient Temperature : 23.5 °C ; Liquid Temperature : 22.5 °C

### DASY5 Configuration

- Probe: EX3DV4 - SN7515; ConvF(9.75, 9.75, 9.75) ; Calibrated: 2018/10/3
- Sensor-Surface: 1.4mm (Mechanical Surface Detection)
- Electronics: DAE4 Sn918; Calibrated: 2018/6/20
- Phantom: SAM\_Left; Type: QD000P40CD; Serial: S/N:1801
- Measurement SW: DASY52, Version 52.10 (1); SEMCAD X Version 14.6.11 (7439)

**Area Scan (61x81x1):** Interpolated grid: dx=1.500 mm, dy=1.500 mm

Maximum value of SAR (interpolated) = 4.53 W/kg

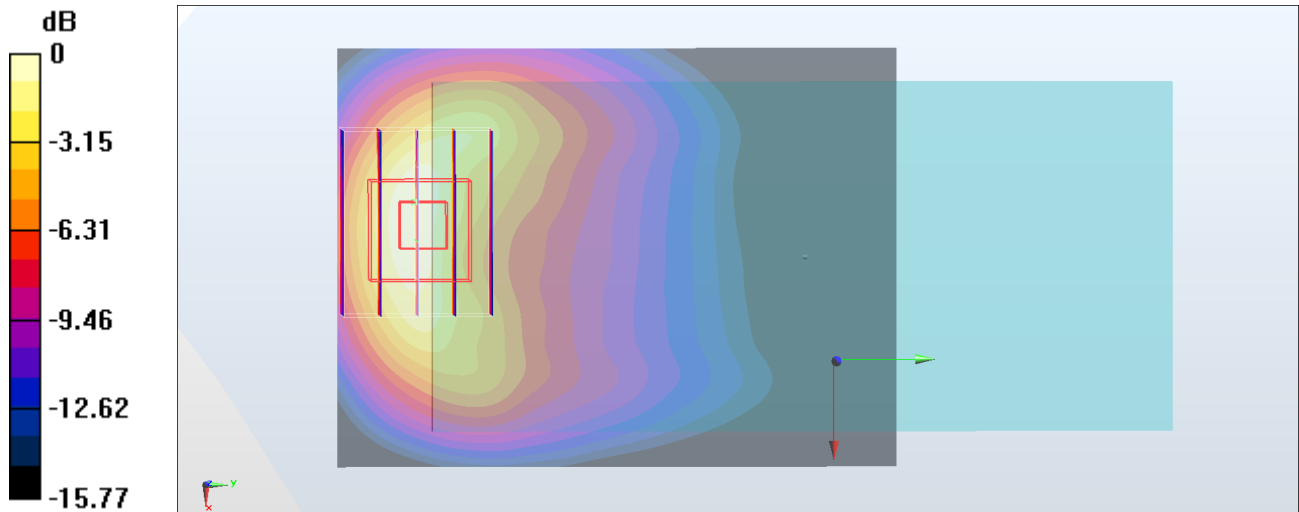
**Zoom Scan (6x5x7)/Cube 0:** Measurement grid: dx=8mm, dy=8mm, dz=5mm

Reference Value = 38.32 V/m; Power Drift = 0.04 dB

Peak SAR (extrapolated) = 6.48 W/kg

**SAR(1 g) = 3.15 W/kg; SAR(10 g) = 1.68 W/kg**

Maximum value of SAR (measured) = 4.89 W/kg



0 dB = 4.53 W/kg = 6.56 dBW/kg

**#51\_GSM1900\_GPRS (2 Tx slots)\_Bottom Side\_0mm\_Ch810**

Communication System: PCS ; Frequency: 1909.8 MHz;Duty Cycle: 1:4.15

Medium: HSL\_1900\_190528 Medium parameters used:  $f = 1910$  MHz;  $\sigma = 1.418$  S/m;  $\epsilon_r = 40.499$ ;  $\rho = 1000$  kg/m<sup>3</sup>

Ambient Temperature : 23.6 °C ; Liquid Temperature : 22.6 °C

DASY5 Configuration:

- Probe: EX3DV4 - SN7350; ConvF(8.24, 8.24, 8.24) ; Calibrated: 2018/12/14
- Sensor-Surface: 1.4mm (Mechanical Surface Detection)
- Electronics: DAE3 Sn360; Calibrated: 2018/10/29
- Phantom: SAM LEFT; Type: QD000P40CD; Serial: TP:1718
- Measurement SW: DASY52, Version 52.10 (1);SEMCAD X Version 14.6.11 (7439)

**Area Scan (41x71x1):** Interpolated grid: dx=1.500 mm, dy=1.500 mm

Maximum value of SAR (interpolated) = 12.2 W/kg

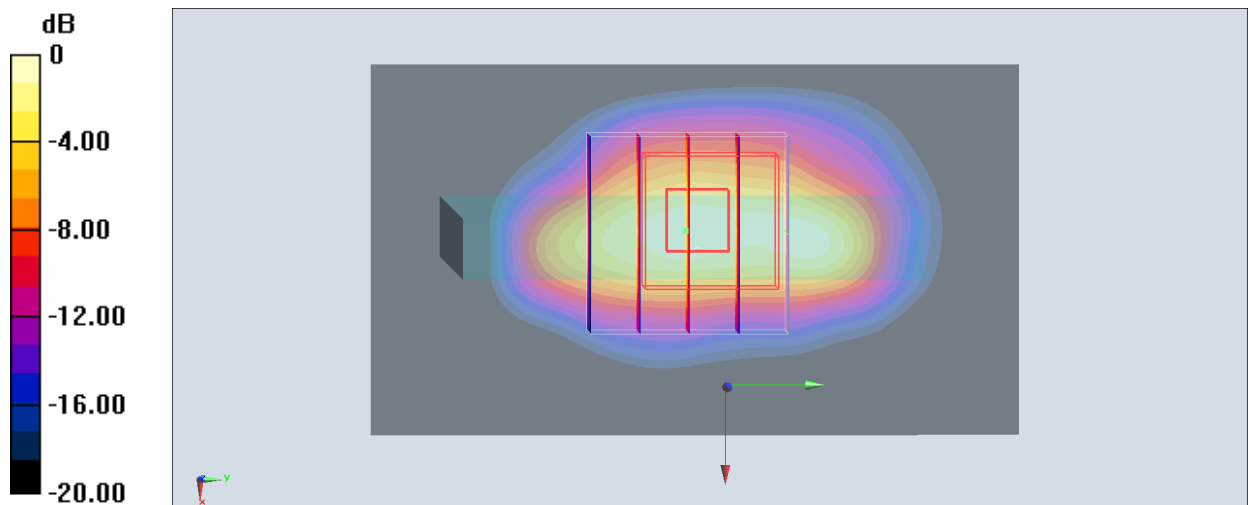
**Zoom Scan (5x5x7)/Cube 0:** Measurement grid: dx=8mm, dy=8mm, dz=5mm

Reference Value = 54.20 V/m; Power Drift = -0.11 dB

Peak SAR (extrapolated) = 16.4 W/kg

**SAR(1 g) = 6.85 W/kg; SAR(10 g) = 3.06 W/kg**

Maximum value of SAR (measured) = 12.7 W/kg



0 dB = 12.2 W/kg = 10.86 dBW/kg

**#52\_WCDMA II\_RMC 12.2Kbps\_Bottom Side\_0mm\_Ch9538**

Communication System: WCDMA; Frequency: 1907.6 MHz; Duty Cycle: 1:1

Medium: HSL\_1900\_190527 Medium parameters used:  $f = 1908$  MHz;  $\sigma = 1.428$  S/m;  $\epsilon_r = 40.685$ ;  $\rho = 1000$  kg/m<sup>3</sup>

Ambient Temperature : 23.7 °C ; Liquid Temperature : 22.7 °C

DASY5 Configuration:

- Probe: EX3DV4 - SN7350; ConvF(8.24, 8.24, 8.24) ; Calibrated: 2018/12/14
- Sensor-Surface: 1.4mm (Mechanical Surface Detection)
- Electronics: DAE3 Sn360; Calibrated: 2018/10/29
- Phantom: SAM LEFT; Type: QD000P40CD; Serial: TP:1718
- Measurement SW: DASY52, Version 52.10 (1); SEMCAD X Version 14.6.11 (7439)

**Area Scan (41x71x1):** Interpolated grid: dx=1.500 mm, dy=1.500 mm

Maximum value of SAR (interpolated) = 11.9 W/kg

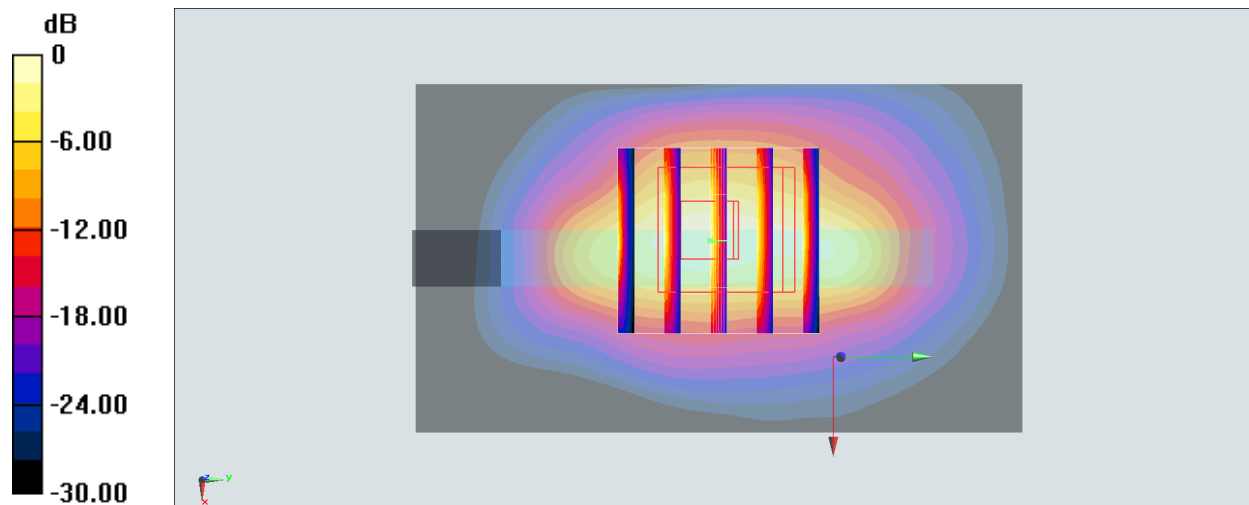
**Zoom Scan (5x5x7)/Cube 0:** Measurement grid: dx=8mm, dy=8mm, dz=5mm

Reference Value = 71.61 V/m; Power Drift = 0.15 dB

Peak SAR (extrapolated) = 15.8 W/kg

**SAR(1 g) = 6.57 W/kg; SAR(10 g) = 2.81 W/kg**

Maximum value of SAR (measured) = 11.8 W/kg



**#53\_WCDMA IV\_RMC 12.2Kbps\_Bottom Side\_0mm\_Ch1513**

Communication System: WCDMA; Frequency: 1752.6 MHz; Duty Cycle: 1:1

Medium: HSL\_1750\_190527 Medium parameters used:  $f = 1753$  MHz;  $\sigma = 1.378$  S/m;  $\epsilon_r = 41.434$ ;  $\rho = 1000$  kg/m<sup>3</sup>

Ambient Temperature : 23.7 °C ; Liquid Temperature : 22.7 °C

DASY5 Configuration:

- Probe: EX3DV4 - SN7350; ConvF(8.63, 8.63, 8.63) ; Calibrated: 2018/12/14
- Sensor-Surface: 1.4mm (Mechanical Surface Detection)
- Electronics: DAE3 Sn360; Calibrated: 2018/10/29
- Phantom: SAM LEFT; Type: QD000P40CD; Serial: TP:1718
- Measurement SW: DASY52, Version 52.10 (1); SEMCAD X Version 14.6.11 (7439)

**Area Scan (41x71x1):** Interpolated grid: dx=1.500 mm, dy=1.500 mm

Maximum value of SAR (interpolated) = 11.3 W/kg

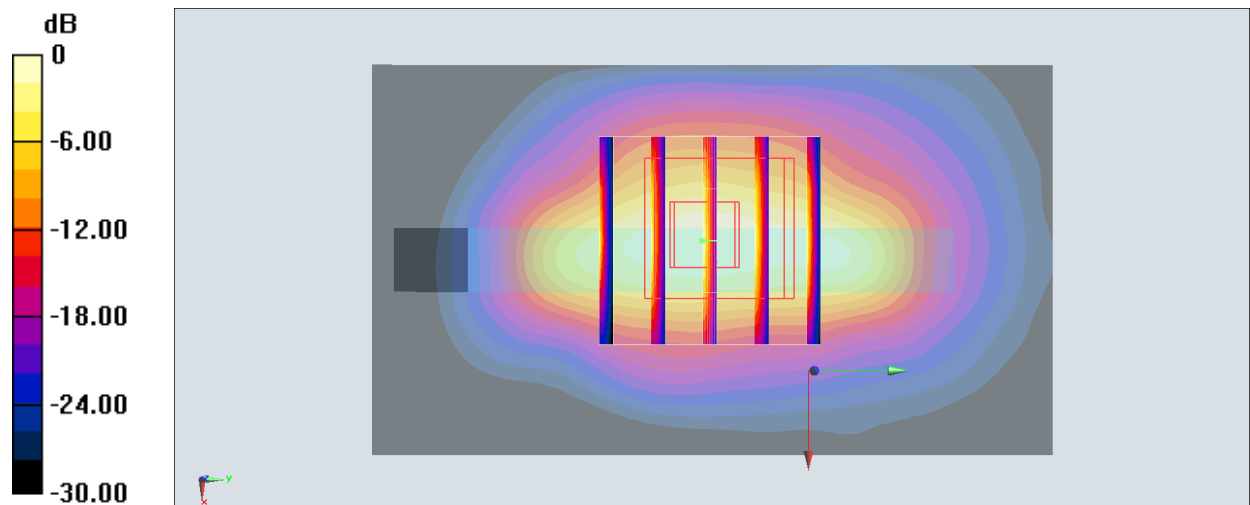
**Zoom Scan (5x5x7)/Cube 0:** Measurement grid: dx=8mm, dy=8mm, dz=5mm

Reference Value = 71.30 V/m; Power Drift = 0.18 dB

Peak SAR (extrapolated) = 14.0 W/kg

**SAR(1 g) = 5.99 W/kg; SAR(10 g) = 2.61 W/kg**

Maximum value of SAR (measured) = 11.1 W/kg



## #54\_WCDMA V\_RMC 12.2Kbps\_Back\_0mm\_Ch4233

Communication System: WCDMA ; Frequency: 846.6 MHz;Duty Cycle: 1:1

Medium: HSL\_850\_190530 Medium parameters used:  $f = 847$  MHz;  $\sigma = 0.901$  S/m;  $\epsilon_r = 42.254$ ;  $\rho = 1000$  kg/m<sup>3</sup>

Ambient Temperature : 23.5 °C ; Liquid Temperature : 22.5 °C

### DASY5 Configuration

- Probe: EX3DV4 - SN7515;ConvF(9.75, 9.75, 9.75) ;Calibrated: 2018/10/3
- Sensor-Surface: 1.4mm (Mechanical Surface Detection)
- Electronics: DAE4 Sn918; Calibrated: 2018/6/20
- Phantom: SAM\_Left; Type: QD000P40CD; Serial: S/N:1801
- Measurement SW: DASY52, Version 52.10 (1); SEMCAD X Version 14.6.11 (7439)

**Area Scan (61x101x1):** Interpolated grid: dx=1.500 mm, dy=1.500 mm

Maximum value of SAR (interpolated) = 5.96 W/kg

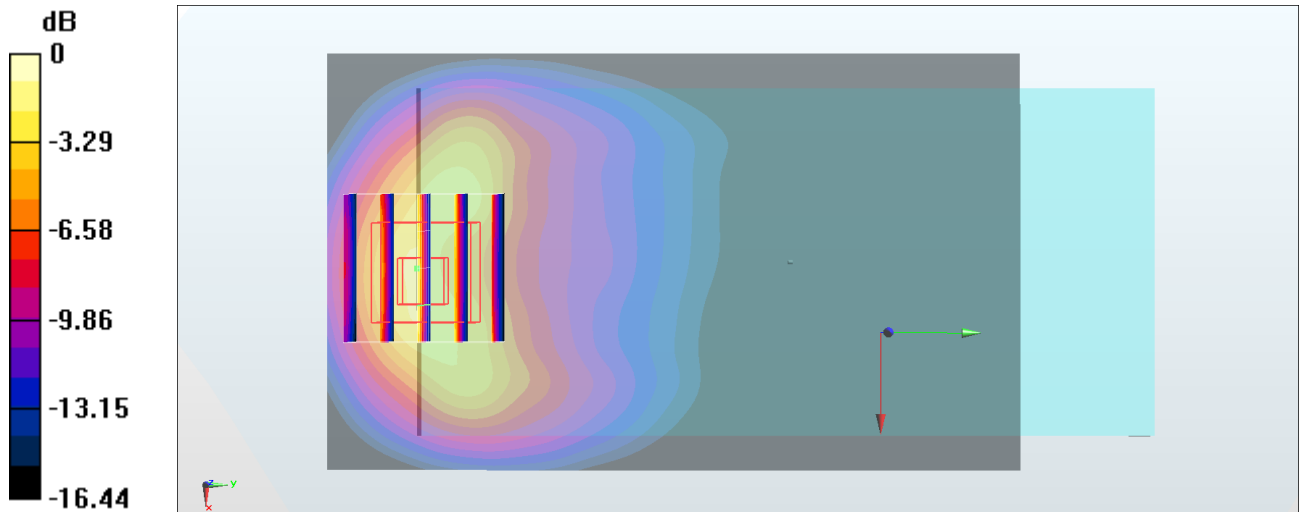
**Zoom Scan (5x5x7)/Cube 0:** Measurement grid: dx=8mm, dy=8mm, dz=5mm

Reference Value = 62.75 V/m; Power Drift = 0.06 dB

Peak SAR (extrapolated) = 12.6 W/kg

**SAR(1 g) = 5.19 W/kg; SAR(10 g) = 2.61 W/kg**

Maximum value of SAR (measured) = 9.38 W/kg



0 dB = 9.38 W/kg = 9.72 dBW/kg

### #55\_LTE Band 2\_20M\_QPSK\_1\_0\_Bottom Side\_0mm\_Ch19100

Communication System: LTE; Frequency: 1900 MHz; Duty Cycle: 1:1

Medium: HSL\_1900\_190527 Medium parameters used:  $f = 1900$  MHz;  $\sigma = 1.421$  S/m;  $\epsilon_r = 40.705$ ;  $\rho = 1000$  kg/m<sup>3</sup>

Ambient Temperature : 23.7 °C ; Liquid Temperature : 22.7 °C

DASY5 Configuration:

- Probe: EX3DV4 - SN7350; ConvF(8.24, 8.24, 8.24) ; Calibrated: 2018/12/14
- Sensor-Surface: 1.4mm (Mechanical Surface Detection)
- Electronics: DAE3 Sn360; Calibrated: 2018/10/29
- Phantom: SAM LEFT; Type: QD000P40CD; Serial: TP:1718
- Measurement SW: DASY52, Version 52.10 (1); SEMCAD X Version 14.6.11 (7439)

**Area Scan (41x71x1):** Interpolated grid: dx=1.500 mm, dy=1.500 mm

Maximum value of SAR (interpolated) = 13.3 W/kg

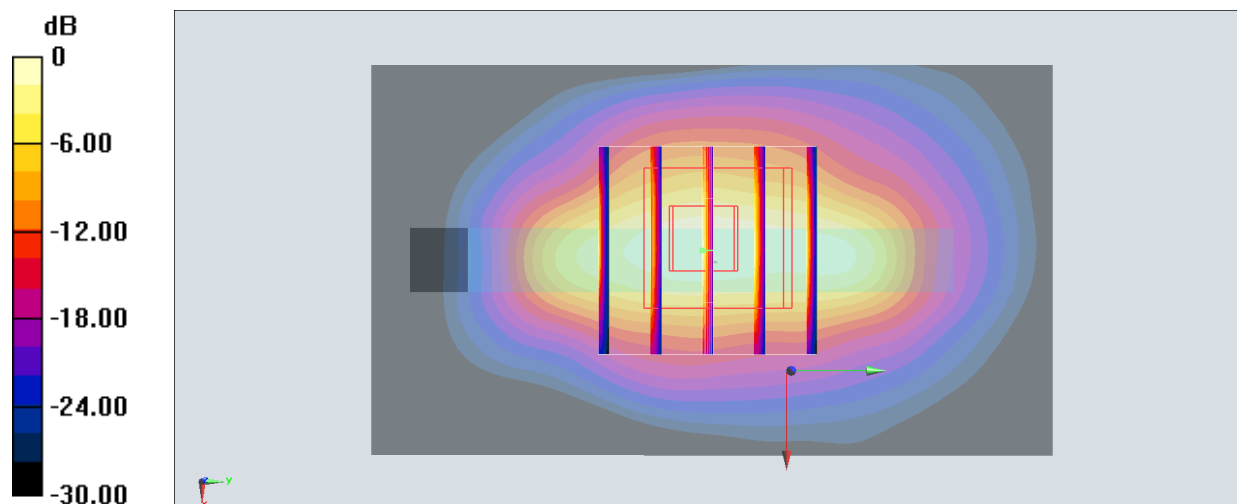
**Zoom Scan (5x5x7)/Cube 0:** Measurement grid: dx=8mm, dy=8mm, dz=5mm

Reference Value = 78.25 V/m; Power Drift = 0.05 dB

Peak SAR (extrapolated) = 16.0 W/kg

**SAR(1 g) = 6.61 W/kg; SAR(10 g) = 2.85 W/kg**

Maximum value of SAR (measured) = 11.9 W/kg



0 dB = 13.3 W/kg = 11.24 dBW/kg

## #56\_LTE Band 5\_10M\_QPSK\_1\_0\_Back\_0mm\_Ch20525

Communication System: LTE; Frequency: 836.5 MHz; Duty Cycle: 1:1

Medium: HSL\_850\_190530 Medium parameters used :  $f = 836.5$  MHz;  $\sigma = 0.891$  S/m;  $\epsilon_r = 42.409$ ;  $\rho = 1000$  kg/m<sup>3</sup>

Ambient Temperature : 23.5 °C ; Liquid Temperature : 22.5 °C

### DASY5 Configuration

- Probe: EX3DV4 - SN7515; ConvF(9.75, 9.75, 9.75) ; Calibrated: 2018/10/3
- Sensor-Surface: 1.4mm (Mechanical Surface Detection)
- Electronics: DAE4 Sn918; Calibrated: 2018/6/20
- Phantom: SAM\_Left; Type: QD000P40CD; Serial: S/N:1801
- Measurement SW: DASY52, Version 52.10 (1); SEMCAD X Version 14.6.11 (7439)

**Area Scan (61x81x1):** Interpolated grid: dx=1.500 mm, dy=1.500 mm

Maximum value of SAR (interpolated) = 5.40 W/kg

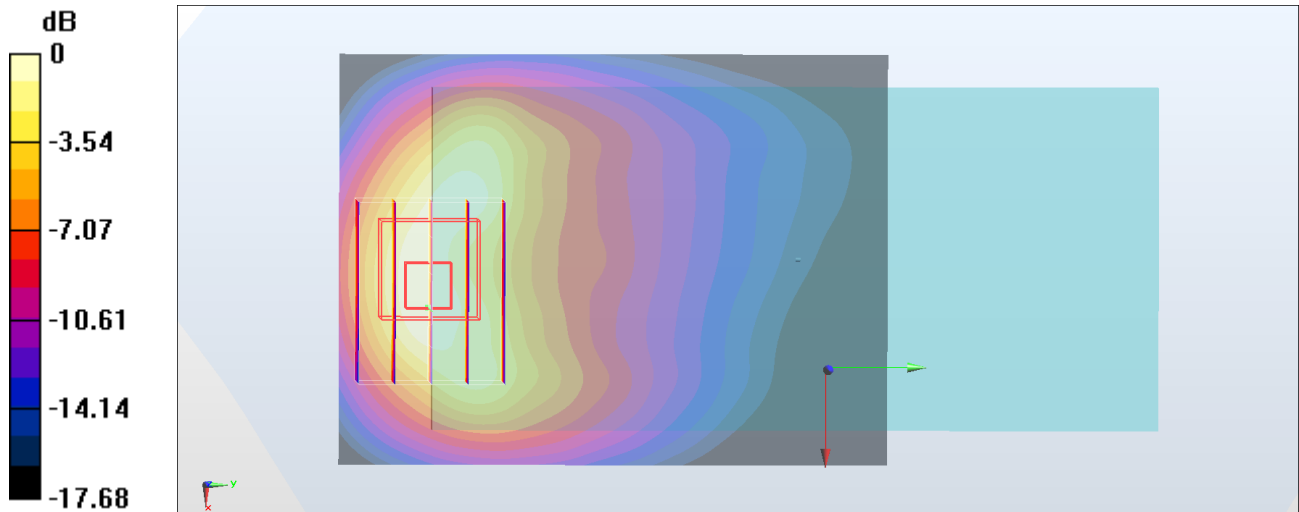
**Zoom Scan (6x5x7)/Cube 0:** Measurement grid: dx=8mm, dy=8mm, dz=5mm

Reference Value = 51.45 V/m; Power Drift = -0.17 dB

Peak SAR (extrapolated) = 10.3 W/kg

**SAR(1 g) = 4.65 W/kg; SAR(10 g) = 2.33 W/kg**

Maximum value of SAR (measured) = 8.26 W/kg



0 dB = 5.40 W/kg = 7.32 dBW/kg

**#57\_LTE Band 7\_20M\_QPSK\_1\_0\_Back\_0mm\_Ch21350**

Communication System: LTE ; Frequency: 2560 MHz;Duty Cycle: 1:1

Medium: HSL\_2600\_190530 Medium parameters used:  $f = 2560$  MHz;  $\sigma = 1.981$  S/m;  $\epsilon_r = 39.514$ ;  $\rho = 1000$  kg/m<sup>3</sup>

Ambient Temperature : 23.4 °C ; Liquid Temperature : 22.4 °C

DASY5 Configuration:

- Probe: EX3DV4 - SN7350; ConvF(7.35, 7.35, 7.35) ; Calibrated: 2018/12/14
- Sensor-Surface: 1.4mm (Mechanical Surface Detection)
- Electronics: DAE3 Sn360; Calibrated: 2018/10/29
- Phantom: SAM LEFT; Type: QD000P40CD; Serial: TP:1718
- Measurement SW: DASY52, Version 52.10 (1);SEMCAD X Version 14.6.11 (7439)

**Area Scan (81x71x1):** Interpolated grid: dx=1.200 mm, dy=1.200 mm

Maximum value of SAR (interpolated) = 22.7 W/kg

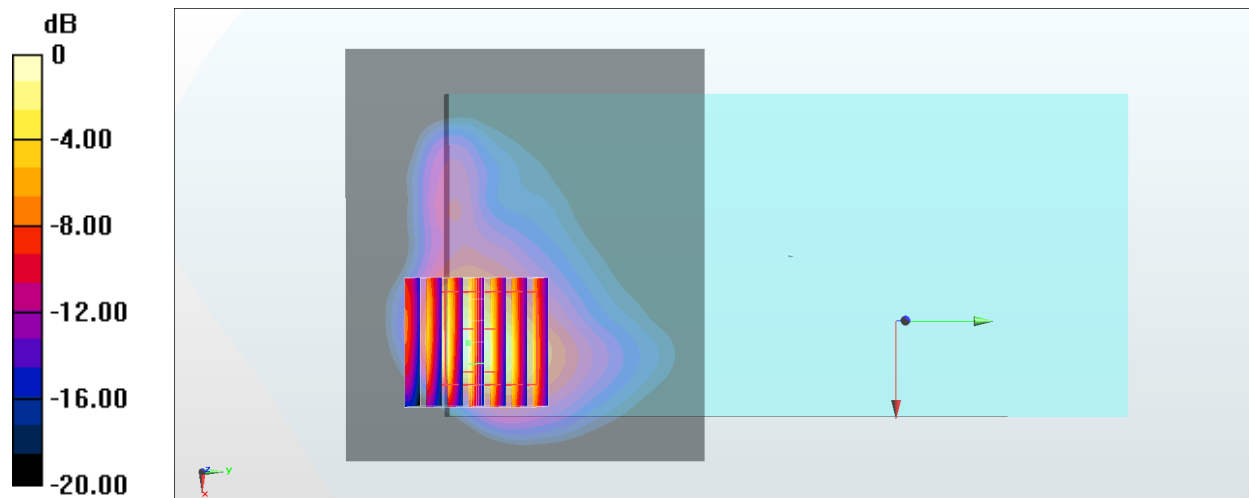
**Zoom Scan (7x7x7)/Cube 0:** Measurement grid: dx=5mm, dy=5mm, dz=5mm

Reference Value = 59.94 V/m; Power Drift = -0.09 dB

Peak SAR (extrapolated) = 30.1 W/kg

**SAR(1 g) = 8.76 W/kg; SAR(10 g) = 3.12 W/kg**

Maximum value of SAR (measured) = 17.9 W/kg



0 dB = 22.7 W/kg = 13.56 dBW/kg

**#58\_LTE Band 66\_20M\_QPSK\_1\_0\_Bottom Side\_0mm\_Ch132572**

Communication System: LTE ; Frequency: 1770 MHz;Duty Cycle: 1:1

Medium: HSL\_1750\_190527 Medium parameters used:  $f = 1770$  MHz;  $\sigma = 1.392$  S/m;  $\epsilon_r = 41.398$ ;  $\rho = 1000$  kg/m<sup>3</sup>

Ambient Temperature : 23.7 °C ; Liquid Temperature : 22.7 °C

DASY5 Configuration:

- Probe: EX3DV4 - SN7350; ConvF(8.63, 8.63, 8.63) ; Calibrated: 2018/12/14
- Sensor-Surface: 1.4mm (Mechanical Surface Detection)
- Electronics: DAE3 Sn360; Calibrated: 2018/10/29
- Phantom: SAM LEFT; Type: QD000P40CD; Serial: TP:1718
- Measurement SW: DASY52, Version 52.10 (1);SEMCAD X Version 14.6.11 (7439)

**Area Scan (41x81x1):** Interpolated grid: dx=1.500 mm, dy=1.500 mm

Maximum value of SAR (interpolated) = 12.2 W/kg

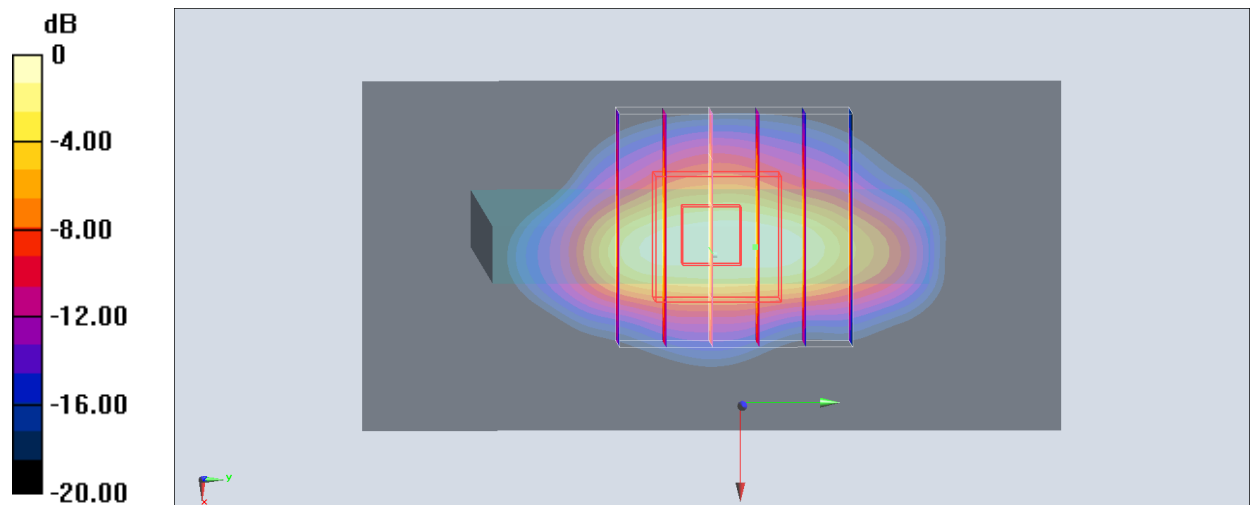
**Zoom Scan (6x6x7)/Cube 0:** Measurement grid: dx=8mm, dy=8mm, dz=5mm

Reference Value = 83.42 V/m; Power Drift = 0.15 dB

Peak SAR (extrapolated) = 14.2 W/kg

**SAR(1 g) = 6.18 W/kg; SAR(10 g) = 2.73 W/kg**

Maximum value of SAR (measured) = 10.5 W/kg



**#59\_LTE Band 41\_20M\_QPSK\_1\_0\_Back\_0mm\_Ch41140**

Communication System: LTE ; Frequency: 2645 MHz;Duty Cycle: 1:1.59

Medium: HSL\_2600\_190530 Medium parameters used :  $f = 2645$  MHz;  $\sigma = 2.062$  S/m;  $\epsilon_r = 39.229$ ;  $\rho = 1000$  kg/m<sup>3</sup>

Ambient Temperature : 23.4 °C ; Liquid Temperature : 22.4 °C

DASY5 Configuration:

- Probe: EX3DV4 - SN7350; ConvF(7.35, 7.35, 7.35) ; Calibrated: 2018/12/14
- Sensor-Surface: 1.4mm (Mechanical Surface Detection)
- Electronics: DAE3 Sn360; Calibrated: 2018/10/29
- Phantom: SAM LEFT; Type: QD000P40CD; Serial: TP:1718
- Measurement SW: DASY52, Version 52.10 (1);SEMCAD X Version 14.6.11 (7439)

**Area Scan (81x71x1):** Interpolated grid: dx=1.200 mm, dy=1.200 mm

Maximum value of SAR (interpolated) = 16.2 W/kg

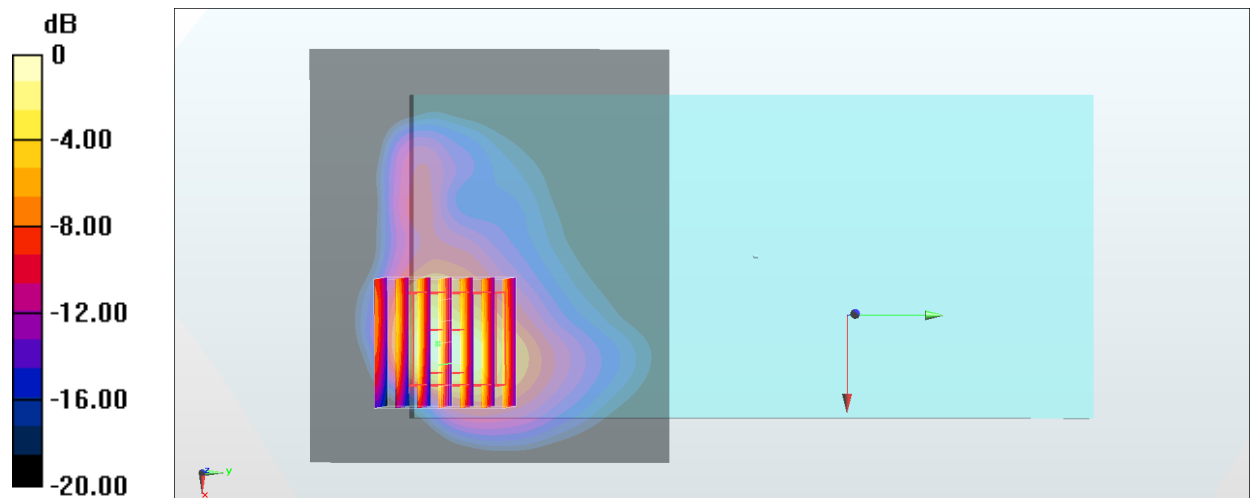
**Zoom Scan (7x7x7)/Cube 0:** Measurement grid: dx=5mm, dy=5mm, dz=5mm

Reference Value = 54.19 V/m; Power Drift = -0.08 dB

Peak SAR (extrapolated) = 26.0 W/kg

**SAR(1 g) = 7.24 W/kg; SAR(10 g) = 2.5 W/kg**

Maximum value of SAR (measured) = 15.2 W/kg



0 dB = 16.2 W/kg = 12.10 dBW/kg

**#60\_WLAN5GHz\_802.11a\_6Mbps\_Back\_0mm\_Ch52**

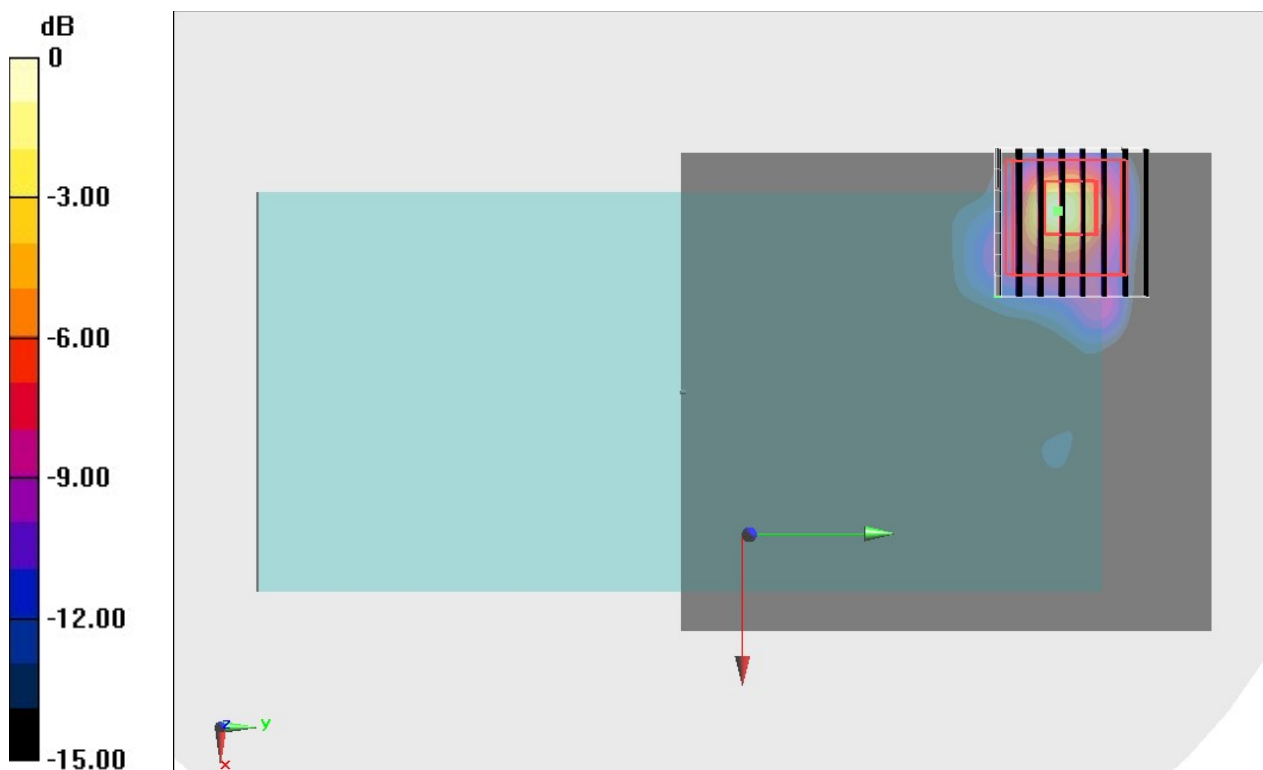
Communication System: 802.11a ; Frequency: 5260 MHz;Duty Cycle: 1:1.019  
Medium: HSL\_5G\_190518 Medium parameters used:  $f = 5260$  MHz;  $\sigma = 4.642$  S/m;  $\epsilon_r = 36.141$ ;  $\rho = 1000$  kg/m<sup>3</sup>  
Ambient Temperature : 23.4 °C ; Liquid Temperature : 22.4 °C

**DASY5 Configuration**

- Probe: EX3DV4 - SN7306;ConvF(5.38, 5.38, 5.38) ;Calibrated: 2018/7/26
- Sensor-Surface: 1.4mm (Mechanical Surface Detection)
- Electronics: DAE3 Sn360; Calibrated: 2018/10/29
- Phantom: Twin-SAM V5.0 (30deg probe tilt); Type: QD 000 P40 CD; Serial: 1885
- Measurement SW: DASY52, Version 52.10 (2); SEMCAD X Version 14.6.12 (7450)

**Area Scan (91x101x1):** Interpolated grid: dx=1.000 mm, dy=1.000 mm  
Maximum value of SAR (interpolated) = 11.2 W/kg

**Zoom Scan (8x8x7)/Cube 0:** Measurement grid: dx=4mm, dy=4mm, dz=1.4mm  
Reference Value = 18.42 V/m; Power Drift = 0.03 dB  
Peak SAR (extrapolated) = 23.2 W/kg  
**SAR(1 g) = 3.99 W/kg; SAR(10 g) = 0.873 W/kg**  
Maximum value of SAR (measured) = 12.2 W/kg



0 dB = 12.2 W/kg = 10.86 dBW/kg

**#61\_WLAN5GHz\_802.11a\_6Mbps\_Back\_0mm\_Ch116**

Communication System: 802.11a ; Frequency: 5580 MHz;Duty Cycle: 1:1.019

Medium: HSL\_5G\_190521 Medium parameters used:  $f = 5580$  MHz;  $\sigma = 4.87$  S/m;  $\epsilon_r = 36.234$ ;  $\rho = 1000$  kg/m<sup>3</sup>

Ambient Temperature : 23.5 °C ; Liquid Temperature : 22.5 °C

**DASY5 Configuration**

- Probe: EX3DV4 - SN3642;ConvF(4.28, 4.28, 4.28) ;Calibrated: 2019/4/29
- Sensor-Surface: 1.4mm (Mechanical Surface Detection)
- Electronics: DAE4 Sn914; Calibrated: 2018/12/11
- Phantom: SAM\_Left; Type: QD000P40CD; Serial: S/N:1801
- Measurement SW: DASY52, Version 52.10 (1); SEMCAD X Version 14.6.11 (7439)

**Area Scan (101x101x1):** Interpolated grid:  $dx=1.000$  mm,  $dy=1.000$  mm

Maximum value of SAR (interpolated) = 2.48 W/kg

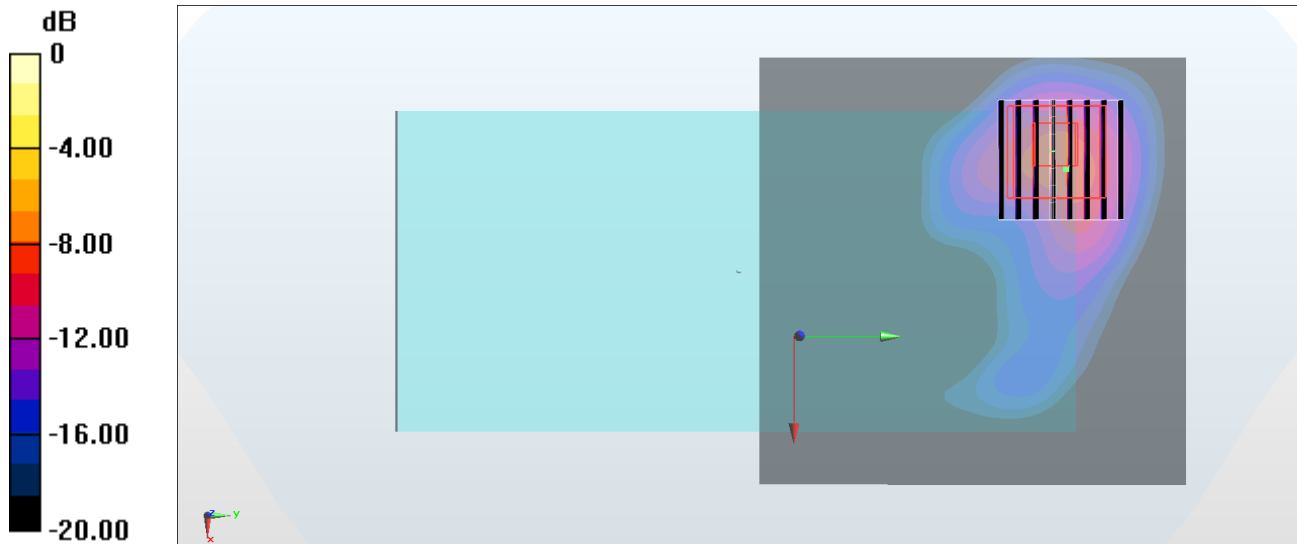
**Zoom Scan (8x8x7)/Cube 0:** Measurement grid:  $dx=4$ mm,  $dy=4$ mm,  $dz=1.4$ mm

Reference Value = 14.49 V/m; Power Drift = -0.14 dB

Peak SAR (extrapolated) = 31.7 W/kg

**SAR(1 g) = 5.6 W/kg; SAR(10 g) = 1.23 W/kg**

Maximum value of SAR (measured) = 15.9 W/kg



0 dB = 15.9 W/kg = 12.01 dBW/kg