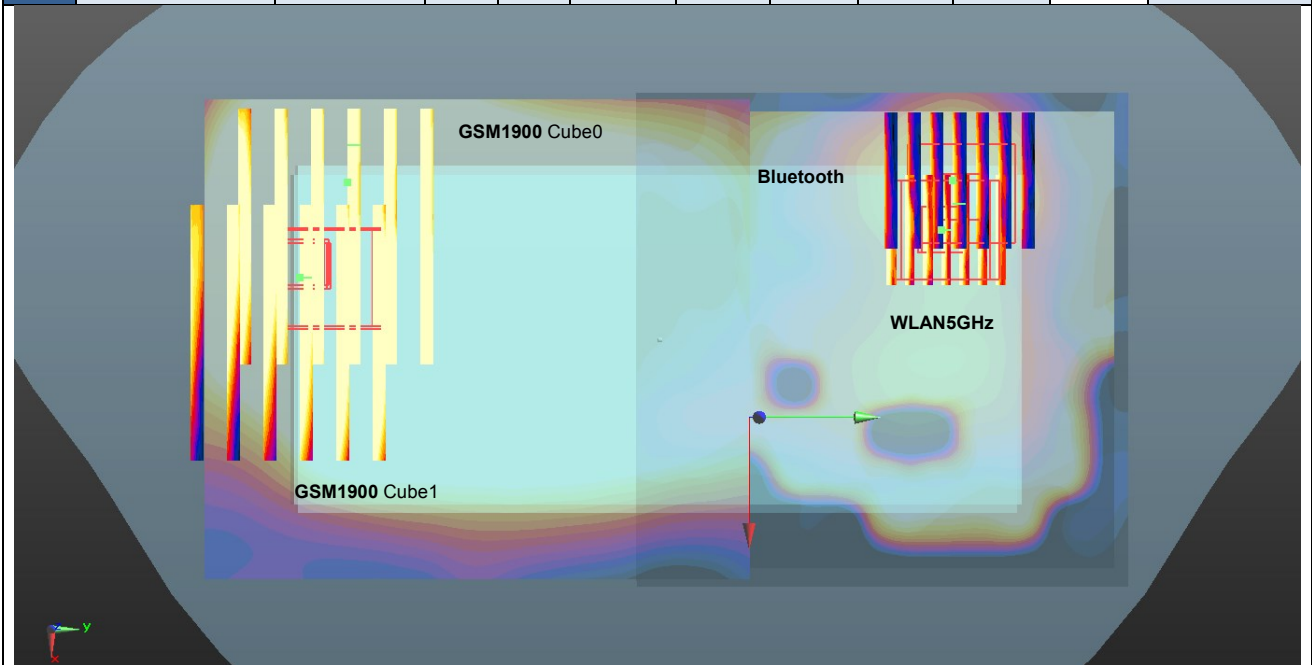
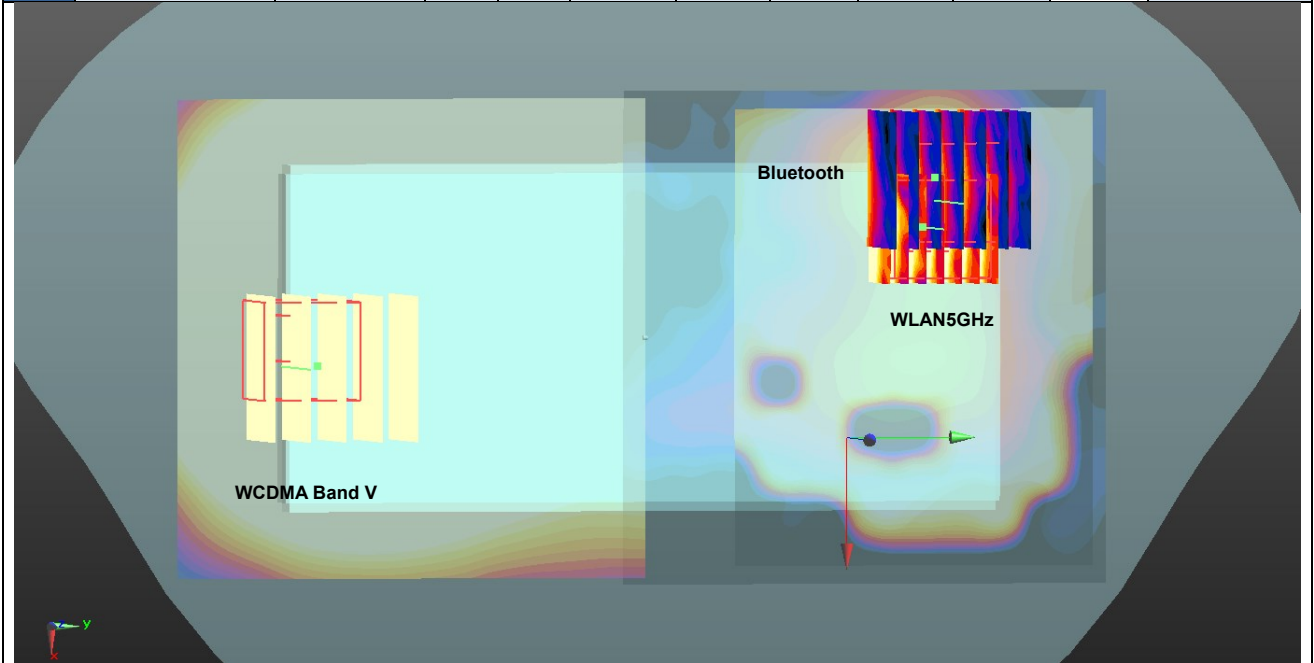


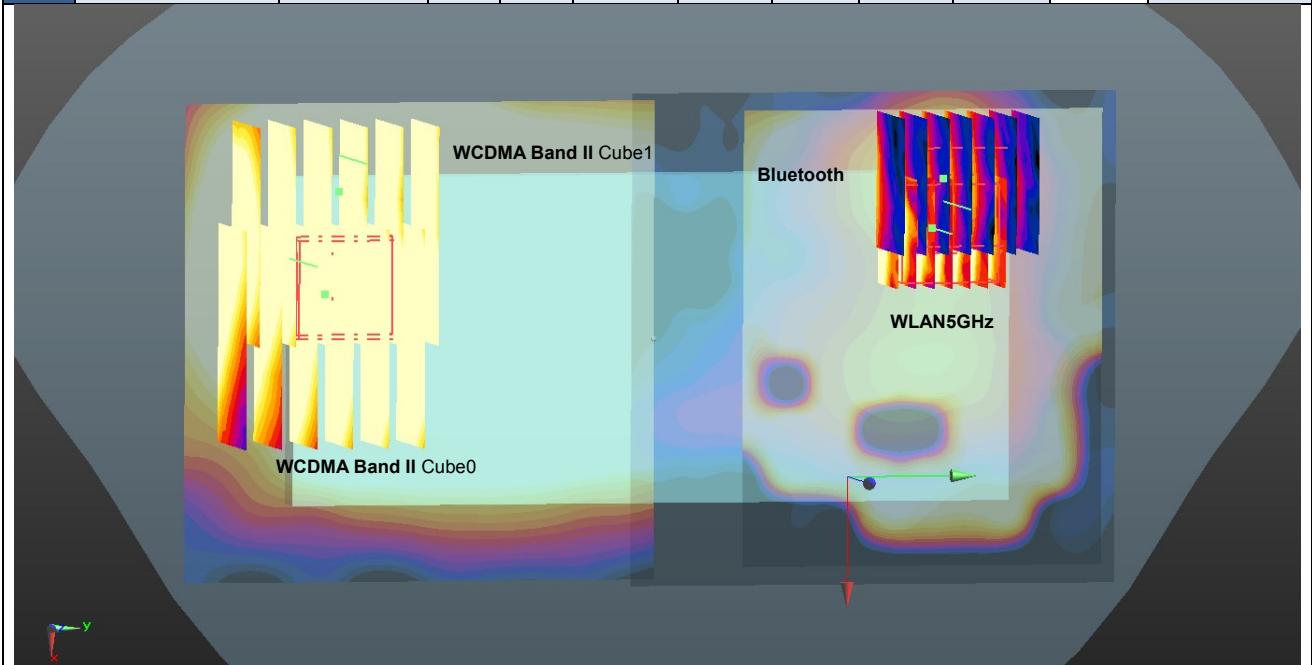
Case #13	Band	Position	SAR (W/kg)	Gap (mm)	SAR peak location (mm)			3D distance (mm)	Summed SAR (W/kg)	SPLSR Results	Simultaneous SAR
					X	Y	Z				
Case #13	GSM1900 Cube0	Back	1.279	5mm	-40.9	-68.5	-1.79	131.6	1.98	0.02	Not required
	Bluetooth		0.041	5mm	-30.8	67.6	-1.89				
	WLAN5GHz		0.662	5mm	-24	62	-2.6				
	GSM1900 Cube0	Back	1.279	5mm	-40.9	-68.5	-1.79	136.5	1.98	0.02	Not required
	WLAN5GHz		0.662	5mm	-24	62	-2.6				
	Bluetooth		0.041	5mm	-30.8	67.6	-1.89				
	GSM1900 Cube1	Back	1.27	5mm	-13.5	-77.4	-1.71	139.8	1.97	0.02	Not required
	Bluetooth		0.041	5mm	-30.8	67.6	-1.89				
	WLAN5GHz		0.662	5mm	-24	62	-2.6				
	GSM1900 Cube1	Back	1.27	5mm	-13.5	-77.4	-1.71	146.0	1.97	0.02	Not required
	WLAN5GHz		0.662	5mm	-24	62	-2.6				
	Bluetooth		0.041	5mm	-30.8	67.6	-1.89				



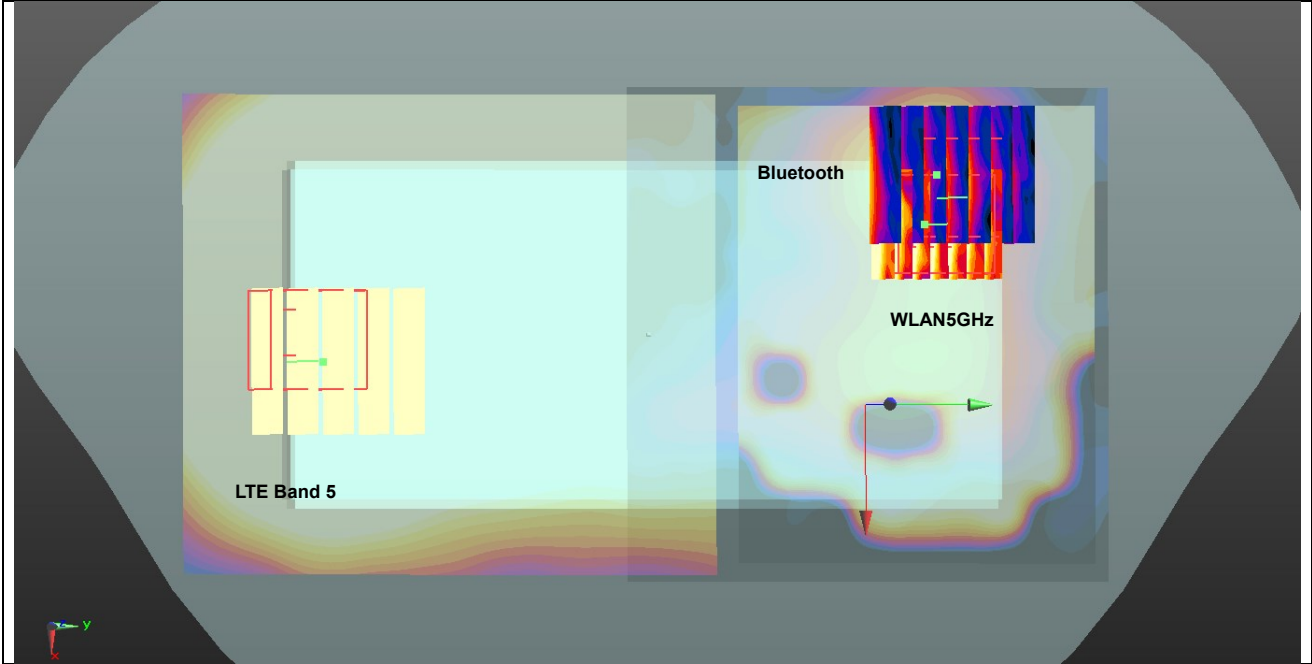
Case #14	Band	Position	SAR (W/kg)	Gap (mm)	SAR peak location (mm)			3D distance (mm)	Summed SAR (W/kg)	SPLSR Results	Simultaneous SAR
					X	Y	Z				
Case #14	WCDMA Band V	Back	1.150	5mm	4.4	-81.5	-1.98	146.3	1.85	0.02	Not required
	Bluetooth		0.041	5mm	-30.8	67.6	-1.89				
	WLAN5GHz		0.662	5mm	-24	62	-2.6				
	WCDMA Band V	Back	1.150	5mm	4.4	-81.5	-1.98	153.2	1.85	0.02	Not required
	WLAN5GHz		0.662	5mm	-24	62	-2.6				
	Bluetooth		0.041	5mm	-30.8	67.6	-1.89				



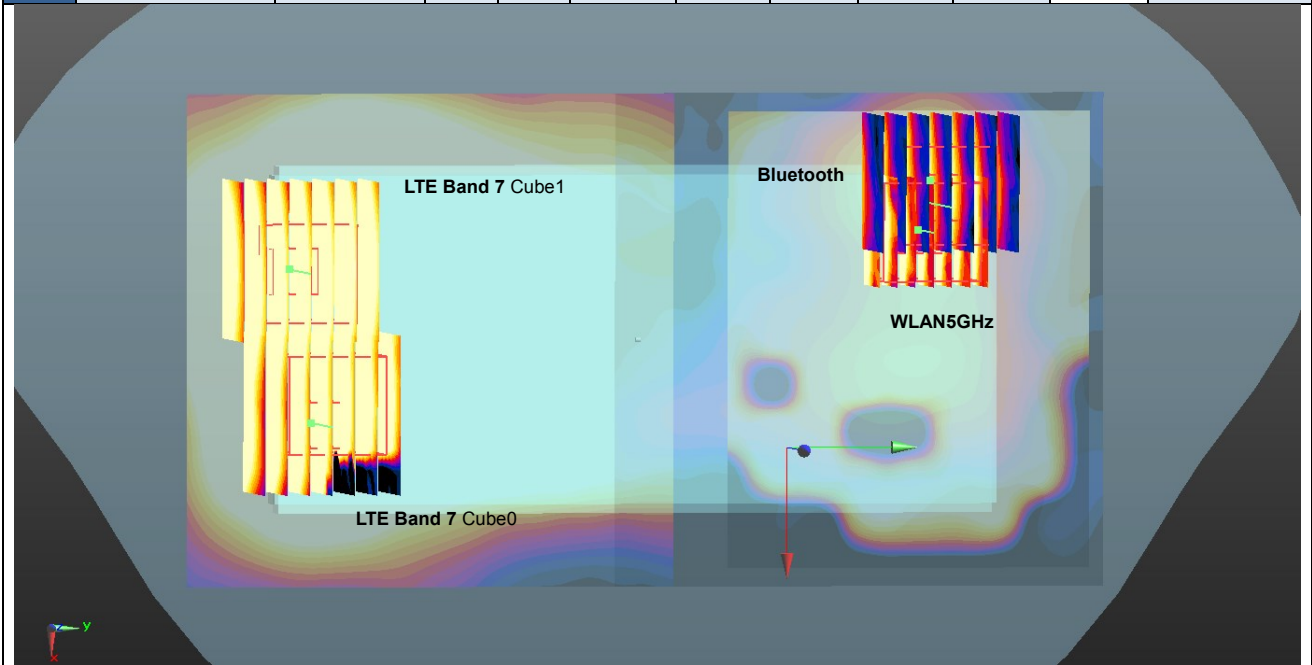
Case #15	Band	Position	SAR (W/kg)	Gap (mm)	SAR peak location (mm)			3D distance (mm)	Summed SAR (W/kg)	SPLSR Results	Simultaneous SAR
					X	Y	Z				
Case #15	WCDMA Band II Cube0	Back	1.021	5mm	-41	-68.9	-1.76	132.0	1.72	0.02	Not required
	Bluetooth		0.041	5mm	-30.8	67.6	-1.89				
	WLAN5GHz		0.662	5mm	-24	62	-2.6				
	WCDMA Band II Cube0	Back	1.021	5mm	-41	-68.9	-1.76	136.9	1.72	0.02	Not required
	WLAN5GHz		0.662	5mm	-24	62	-2.6				
	Bluetooth		0.041	5mm	-30.8	67.6	-1.89				
	WCDMA Band II Cube1	Back	1.013	5mm	-13.7	-78.3	-1.68	140.7	1.72	0.02	Not required
	Bluetooth		0.041	5mm	-30.8	67.6	-1.89				
	WLAN5GHz		0.662	5mm	-24	62	-2.6				
	WCDMA Band II Cube1	Back	1.013	5mm	-13.7	-78.3	-1.68	146.9	1.72	0.02	Not required
	WLAN5GHz		0.662	5mm	-24	62	-2.6				
	Bluetooth		0.041	5mm	-30.8	67.6	-1.89				



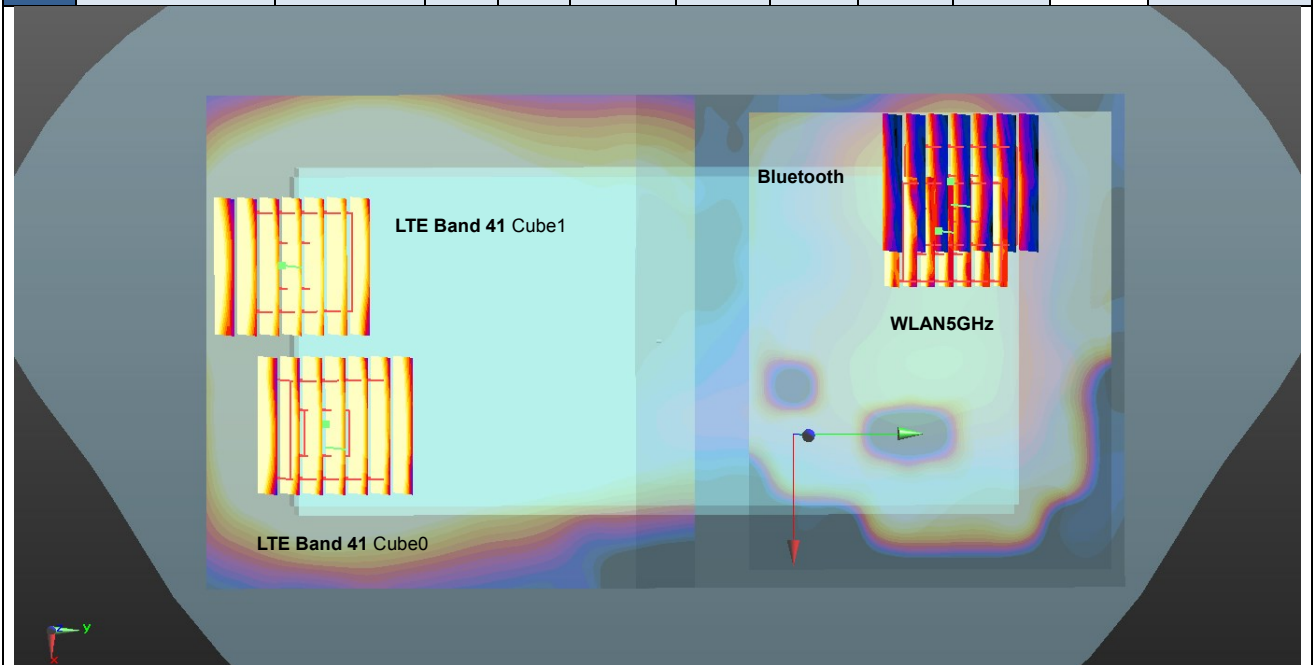
Case #16	Band	Position	SAR (W/kg)	Gap (mm)	SAR peak location (mm)			3D distance (mm)	Summed SAR (W/kg)	SPLSR Results	Simultaneous SAR
					X	Y	Z				
Case #16	LTE Band 5	Back	1.056	5mm	4.4	-81.5	-1.96	146.3	1.76	0.02	Not required
	Bluetooth		0.041	5mm	-30.8	67.6	-1.89				
	WLAN5GHz		0.662	5mm	-24	62	-2.6				
	LTE Band 5	Back	1.056	5mm	4.4	-81.5	-1.96	153.2	1.76	0.02	Not required
	WLAN5GHz		0.662	5mm	-24	62	-2.6				
	Bluetooth		0.041	5mm	-30.8	67.6	-1.89				



Case #17	Band	Position	SAR (W/kg)	Gap (mm)	SAR peak location (mm)			3D distance (mm)	Summed SAR (W/kg)	SPLSR Results	Simultaneous SAR
					X	Y	Z				
Case #17	LTE Band 7 Cube0	Back	1.355	5mm	21	-68.4	-1.7	137.9	2.06	0.02	Not required
	Bluetooth		0.041	5mm	-30.8	67.6	-1.89				
	WLAN5GHz		0.662	5mm	-24	62	-2.6				
	LTE Band 7 Cube0	Back	1.355	5mm	21	-68.4	-1.7	145.5	2.06	0.02	Not required
	WLAN5GHz		0.662	5mm	-24	62	-2.6				
	Bluetooth		0.041	5mm	-30.8	67.6	-1.89				
	LTE Band 7 Cube1	Back	1.287	5mm	-15.6	-78.2	-1.8	140.5	1.99	0.02	Not required
	Bluetooth		0.041	5mm	-30.8	67.6	-1.89				
	WLAN5GHz		0.662	5mm	-24	62	-2.6				
	LTE Band 7 Cube1	Back	1.287	5mm	-15.6	-78.2	-1.8	146.6	1.99	0.02	Not required
	WLAN5GHz		0.662	5mm	-24	62	-2.6				
	Bluetooth		0.041	5mm	-30.8	67.6	-1.89				



Case #18	Band	Position	SAR (W/kg)	Gap (mm)	SAR peak location (mm)			3D distance (mm)	Summed SAR (W/kg)	SPLSR Results	Simultaneous SAR
					X	Y	Z				
Case #18	LTE Band 41 Cube0	Back	1.439	5mm	21	-73.6	-1.31	142.9	2.14	0.02	Not required
	Bluetooth		0.041	5mm	-30.8	67.6	-1.89				
	WLAN5GHz		0.662	5mm	-24	62	-2.6				
	LTE Band 41 Cube0	Back	1.439	5mm	21	-73.6	-1.31	150.4	2.14	0.02	Not required
	WLAN5GHz		0.662	5mm	-24	62	-2.6				
	Bluetooth		0.041	5mm	-30.8	67.6	-1.89				
	LTE Band 41 Cube1	Back	1.197	5mm	-16.8	-81.12	-1.59	143.4	1.90	0.02	Not required
	Bluetooth		0.041	5mm	-30.8	67.6	-1.89				
	WLAN5GHz		0.662	5mm	-24	62	-2.6				
	LTE Band 41 Cube1	Back	1.197	5mm	-16.8	-81.12	-1.59	149.5	1.90	0.02	Not required
	WLAN5GHz		0.662	5mm	-24	62	-2.6				
	Bluetooth		0.041	5mm	-30.8	67.6	-1.89				



**Test Engineer:** Nick Hu



## **17. Uncertainty Assessment**

Per KDB 865664 D01 SAR measurement 100MHz to 6GHz, when the highest measured 1-g SAR within a frequency band is < 1.5 W/kg and the measured 10-g SAR within a frequency band is < 3.75 W/kg. The expanded SAR measurement uncertainty must be  $\leq 30\%$ , for a confidence interval of  $k = 2$ . If these conditions are met, extensive SAR measurement uncertainty analysis described in IEEE Std 1528-2013 is not required in SAR reports submitted for equipment approval. For this device, the highest measured 1-g SAR is less 1.5W/kg and highest measured 10-g SAR is less 3.75W/kg. Therefore, the measurement uncertainty table is not required in this report.

## **18. References**

- [1] FCC 47 CFR Part 2 “Frequency Allocations and Radio Treaty Matters; General Rules and Regulations”
- [2] ANSI/IEEE Std. C95.1-1992, “IEEE Standard for Safety Levels with Respect to Human Exposure to Radio Frequency Electromagnetic Fields, 3 kHz to 300 GHz”, September 1992
- [3] IEEE Std. 1528-2013, “IEEE Recommended Practice for Determining the Peak Spatial-Average Specific Absorption Rate (SAR) in the Human Head from Wireless Communications Devices: Measurement Techniques”, Sep 2013
- [4] SPEAG DASYS System Handbook
- [5] FCC KDB 865664 D01 v01r04, "SAR Measurement Requirements for 100 MHz to 6 GHz", Aug 2015.
- [6] FCC KDB 865664 D02 v01r02, “RF Exposure Compliance Reporting and Documentation Considerations” Oct 2015.
- [7] FCC KDB 447498 D01 v06, “Mobile and Portable Device RF Exposure Procedures and Equipment Authorization Policies”, Oct 2015
- [8] FCC KDB 648474 D04 v01r03, “SAR Evaluation Considerations for Wireless Handsets”, Oct 2015.
- [9] FCC KDB 248227 D01 v02r02, “SAR Guidance for IEEE 802.11 (WiFi) Transmitters”, Oct 2015.
- [10] FCC KDB 616217 D04 v01r02, “SAR Evaluation Considerations for Laptop, Notebook, Netbook and Tablet Computers”, Oct 2015
- [11] FCC KDB 941225 D01 v03r01, “3G SAR MEASUREMENT PROCEDURES”, Oct 2015
- [12] FCC KDB 941225 D05 v02r05, “SAR Evaluation Considerations for LTE Devices”, Dec 2015
- [13] FCC KDB 941225 D05A v01r02, “Rel. 10 LTE SAR Test Guidance and KDB Inquiries”, Oct 2015
- [14] FCC KDB 941225 D06 v02r01, "SAR Evaluation Procedures for Portable Devices with Wireless Router Capabilities", Oct 2015.



**Appendix A. Plots of System Performance Check**

The plots are shown as follows.

### System Check\_Head\_835MHz

#### DUT: D835V2-4d151

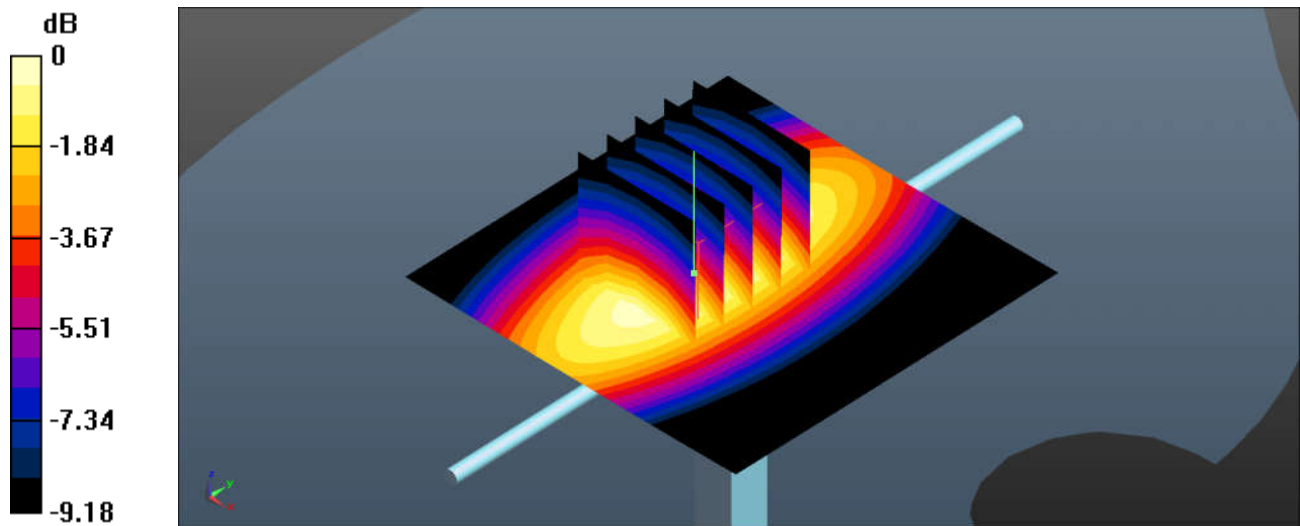
Communication System: UID 0, CW (0); Frequency: 835 MHz; Duty Cycle: 1:1  
Medium: HSL\_850 Medium parameters used:  $f = 835 \text{ MHz}$ ;  $\sigma = 0.91 \text{ S/m}$ ;  $\epsilon_r = 41.571$ ;  $\rho = 1000 \text{ kg/m}^3$   
Ambient Temperature :  $23.1 \text{ }^\circ\text{C}$  ; Liquid Temperature :  $22.5 \text{ }^\circ\text{C}$

#### DASY5 Configuration:

- Probe: EX3DV4 - SN3843; ConvF(9.01, 9.01, 9.01); Calibrated: 2018.9.27
- Sensor-Surface: 1.4mm (Mechanical Surface Detection)
- Electronics: DAE4 Sn1338; Calibrated: 2018.12.3
- Phantom: SAM1; Type: SAM; Serial: TP-1839
- Measurement SW: DASY52, Version 52.10 (1); SEMCAD X Version 14.6.11 (7439)

**Pin=250mW/Area Scan (61x61x1):** Interpolated grid:  $dx=1.500 \text{ mm}$ ,  $dy=1.500 \text{ mm}$   
Maximum value of SAR (interpolated) =  $2.70 \text{ W/kg}$

**Pin=250mW/Zoom Scan (5x5x7)/Cube 0:** Measurement grid:  $dx=8\text{mm}$ ,  $dy=8\text{mm}$ ,  $dz=5\text{mm}$   
Reference Value =  $56.69 \text{ V/m}$ ; Power Drift =  $-0.05 \text{ dB}$   
Peak SAR (extrapolated) =  $3.38 \text{ W/kg}$   
**SAR(1 g) =  $2.36 \text{ W/kg}$ ; SAR(10 g) =  $1.61 \text{ W/kg}$**   
Maximum value of SAR (measured) =  $2.72 \text{ W/kg}$



0 dB =  $2.72 \text{ W/kg} = 4.64 \text{ dBW/kg}$

### System Check\_Head\_1900MHz

#### DUT: D1900V2-5d170

Communication System: UID 0, CW (0); Frequency: 1900 MHz; Duty Cycle: 1:1

Medium: HSL\_1900 Medium parameters used:  $f = 1900$  MHz;  $\sigma = 1.439$  S/m;  $\epsilon_r = 38.966$ ;  $\rho = 1000$  kg/m<sup>3</sup>

Ambient Temperature : 23.3 °C ; Liquid Temperature : 22.7 °C

#### DASY5 Configuration:

- Probe: EX3DV4 - SN3843; ConvF(7.4, 7.4, 7.4); Calibrated: 2018.9.27
- Sensor-Surface: 1.4mm (Mechanical Surface Detection)
- Electronics: DAE4 Sn1338; Calibrated: 2018.12.3
- Phantom: SAM2; Type: SAM; Serial: TP-1754
- Measurement SW: DASY52, Version 52.10 (1); SEMCAD X Version 14.6.11 (7439)

**Pin=250mW/Area Scan (61x61x1):** Interpolated grid: dx=1.500 mm, dy=1.500 mm

Maximum value of SAR (interpolated) = 12.3 W/kg

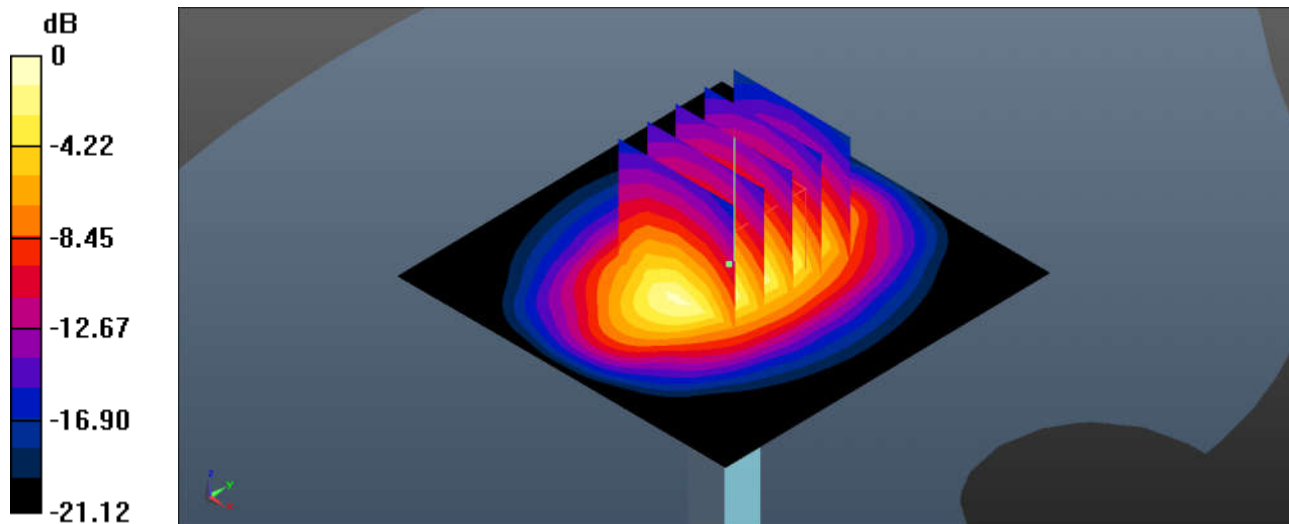
**Pin=250mW/Zoom Scan (5x5x7)/Cube 0:** Measurement grid: dx=8mm, dy=8mm, dz=5mm

Reference Value = 88.08 V/m; Power Drift = -0.07 dB

Peak SAR (extrapolated) = 16.7 W/kg

**SAR(1 g) = 9.22 W/kg; SAR(10 g) = 4.85 W/kg**

Maximum value of SAR (measured) = 11.9 W/kg



0 dB = 11.9 W/kg = 10.81 dBW/kg

### System Check\_Head\_2450MHz

#### DUT: D2450V2-908

Communication System: UID 0, CW; Frequency: 2450 MHz; Duty Cycle: 1:1

Medium: HSL\_2450 Medium parameters used:  $f = 2450$  MHz;  $\sigma = 1.859$  S/m;  $\epsilon_r = 38.887$ ;  $\rho = 1000$  kg/m<sup>3</sup>

Ambient Temperature : 23.4 °C ; Liquid Temperature : 22.8 °C

#### DASY5 Configuration:

- Probe: EX3DV4 - SN3843; ConvF(7.08, 7.08, 7.08); Calibrated: 2018.9.27
- Sensor-Surface: 1.4mm (Mechanical Surface Detection)
- Electronics: DAE4 Sn1338; Calibrated: 2018.12.3
- Phantom: SAM1; Type: SAM; Serial: TP-1839
- Measurement SW: DASY52, Version 52.10 (1); SEMCAD X Version 14.6.11 (7439)

**Pin=250mW/Area Scan (71x71x1):** Interpolated grid: dx=1.200 mm, dy=1.200 mm

Maximum value of SAR (interpolated) = 18.2 W/kg

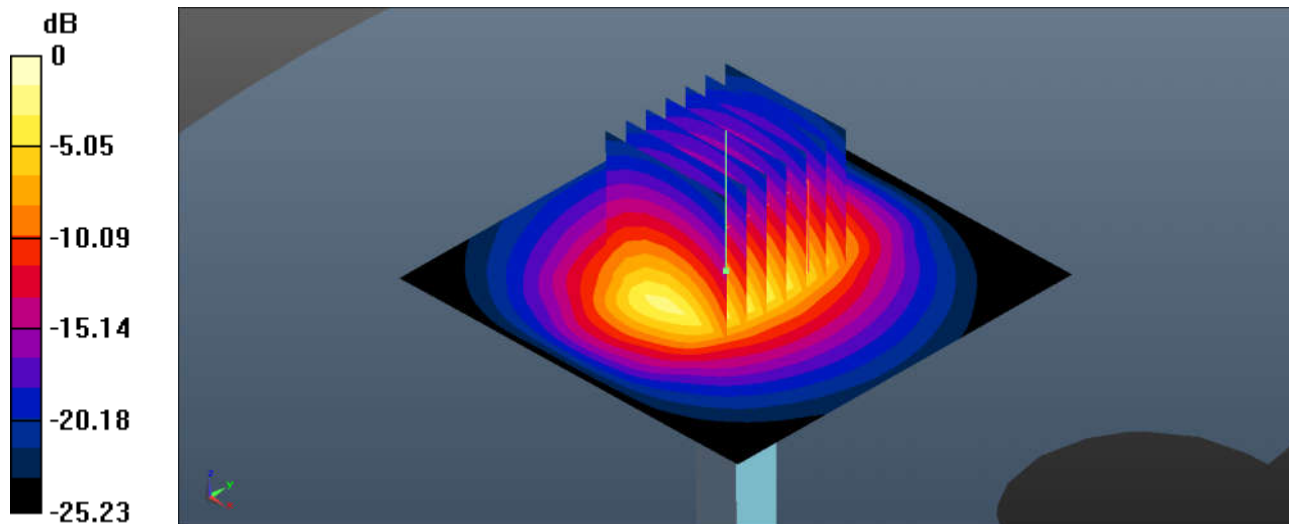
**Pin=250mW/Zoom Scan (7x7x7)/Cube 0:** Measurement grid: dx=5mm, dy=5mm, dz=5mm

Reference Value = 83.73 V/m; Power Drift = 0.10 dB

Peak SAR (extrapolated) = 24.6 W/kg

**SAR(1 g) = 12.3 W/kg; SAR(10 g) = 5.65 W/kg**

Maximum value of SAR (measured) = 17.7 W/kg



0 dB = 17.7 W/kg = 12.48 dBW/kg

### System Check\_Head\_2600MHz

#### DUT: D2600V2-1061

Communication System: UID 0, CW; Frequency: 2600 MHz; Duty Cycle: 1:1

Medium: HSL\_2600 Medium parameters used:  $f = 2600$  MHz;  $\sigma = 1.998$  S/m;  $\epsilon_r = 38.452$ ;  $\rho = 1000$  kg/m<sup>3</sup>

Ambient Temperature : 23.2 °C ; Liquid Temperature : 22.6 °C

#### DASY5 Configuration:

- Probe: EX3DV4 - SN3843; ConvF(6.86, 6.86, 6.86); Calibrated: 2018.9.27
- Sensor-Surface: 1.4mm (Mechanical Surface Detection)
- Electronics: DAE4 Sn1338; Calibrated: 2018.12.3
- Phantom: SAM1; Type: SAM; Serial: TP-1839
- Measurement SW: DASY52, Version 52.10 (1); SEMCAD X Version 14.6.11 (7439)

**Pin=250mW/Area Scan (71x71x1):** Interpolated grid: dx=1.200 mm, dy=1.200 mm

Maximum value of SAR (interpolated) = 20.4 W/kg

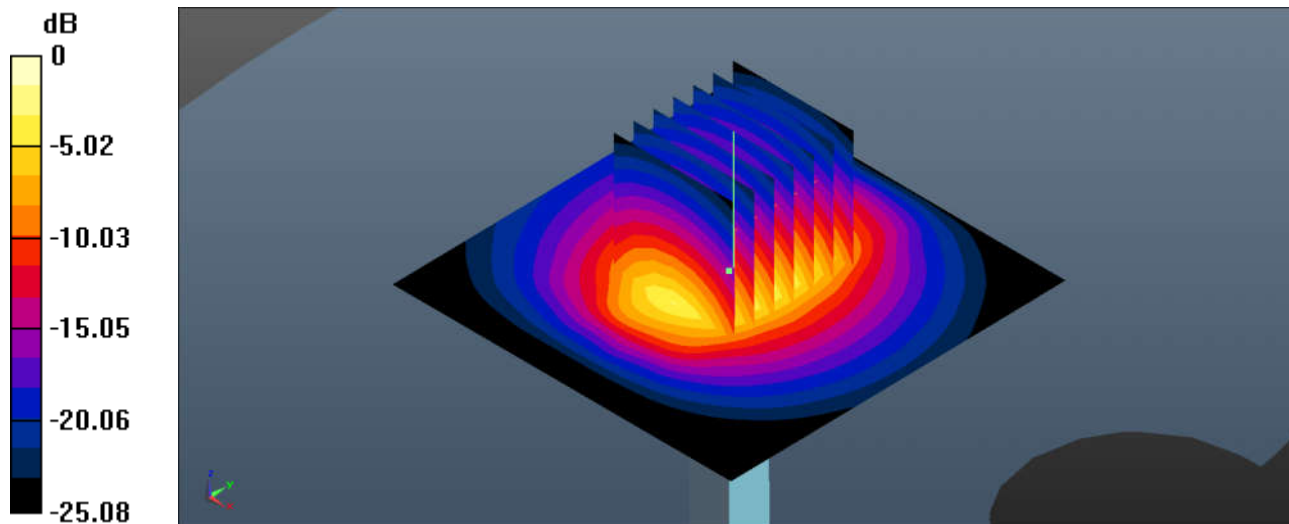
**Pin=250mW/Zoom Scan (7x7x7)/Cube 0:** Measurement grid: dx=5mm, dy=5mm, dz=5mm

Reference Value = 89.20 V/m; Power Drift = -0.06 dB

Peak SAR (extrapolated) = 29.1 W/kg

**SAR(1 g) = 13.7 W/kg; SAR(10 g) = 6.11 W/kg**

Maximum value of SAR (measured) = 19.5 W/kg



0 dB = 19.5 W/kg = 12.90 dBW/kg

### System Check\_Head\_5250MHz

#### DUT: D5GHzV2-1006

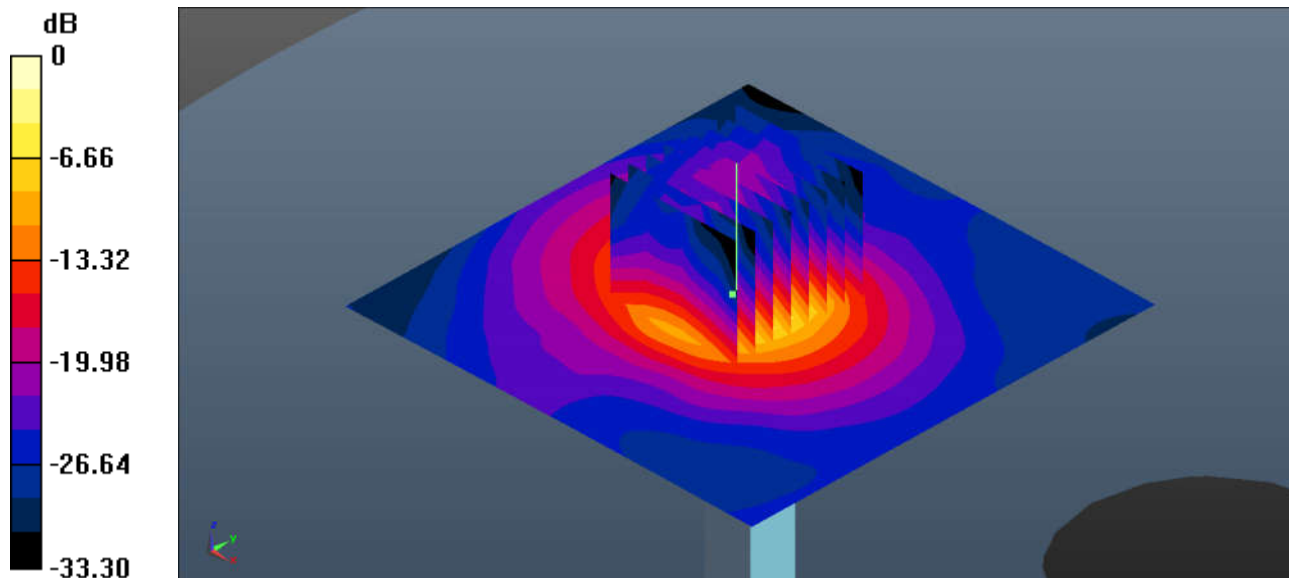
Communication System: UID 0, CW (0); Frequency: 5250 MHz; Duty Cycle: 1:1  
Medium: HSL\_5000 Medium parameters used:  $f = 5250$  MHz;  $\sigma = 4.626$  S/m;  $\epsilon_r = 36.401$ ;  $\rho = 1000$  kg/m<sup>3</sup>  
Ambient Temperature : 23.4 °C ; Liquid Temperature : 22.8 °C

#### DASY5 Configuration:

- Probe: EX3DV4 - SN3857; ConvF(5.2, 5.2, 5.2); Calibrated: 2018.5.31
- Sensor-Surface: 1.4mm (Mechanical Surface Detection)
- Electronics: DAE4 Sn1279; Calibrated: 2018.10.22
- Phantom: SAM1; Type: SAM; Serial: TP-1839
- Measurement SW: DASY52, Version 52.10 (1); SEMCAD X Version 14.6.11 (7439)

**Pin=100mW/Area Scan (91x91x1):** Interpolated grid: dx=1.000 mm, dy=1.000 mm  
Maximum value of SAR (interpolated) = 15.7 W/kg

**Pin=100mW/Zoom Scan (8x8x7)/Cube 0:** Measurement grid: dx=4mm, dy=4mm, dz=1.4mm  
Reference Value = 37.58 V/m; Power Drift = -0.11 dB  
Peak SAR (extrapolated) = 30.5 W/kg  
**SAR(1 g) = 7.95 W/kg; SAR(10 g) = 2.39 W/kg**  
Maximum value of SAR (measured) = 16.8 W/kg



0 dB = 16.8.0 W/kg = 9.56 dBW/kg

### System Check\_Head\_5600MHz

#### DUT: D5GHzV2-1006

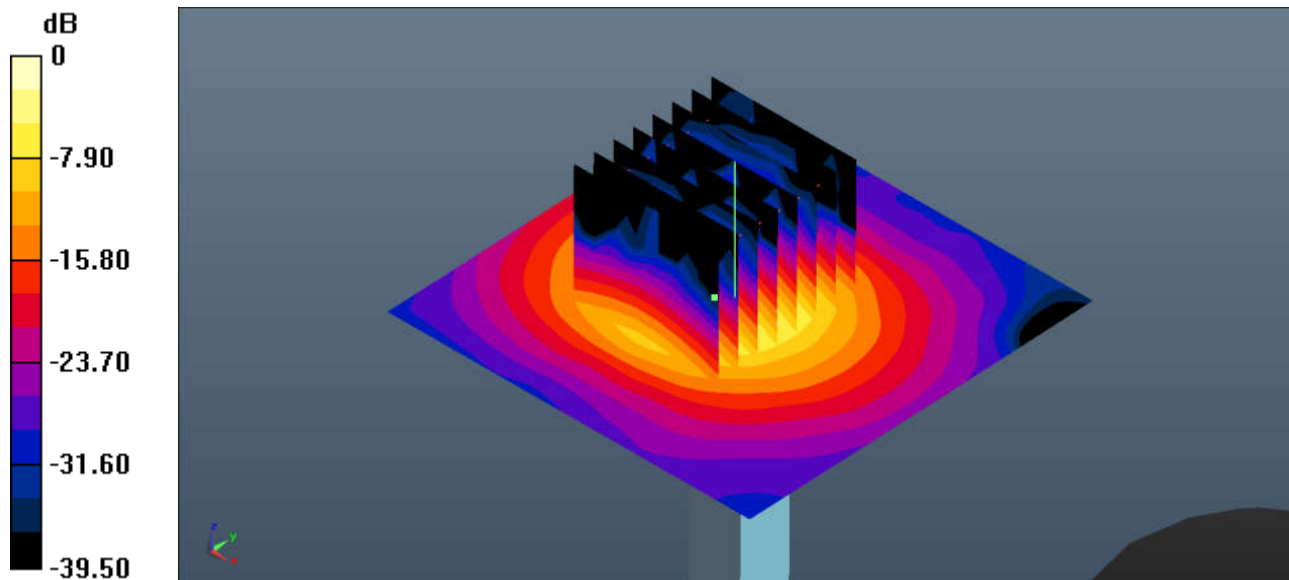
Communication System: UID 0, CW (0); Frequency: 5600 MHz; Duty Cycle: 1:1  
Medium: HSL\_5000 Medium parameters used:  $f = 5600$  MHz;  $\sigma = 4.983$  S/m;  $\epsilon_r = 35.902$ ;  $\rho = 1000$  kg/m<sup>3</sup>  
Ambient Temperature : 23.3 °C ; Liquid Temperature : 22.7 °C

#### DASY5 Configuration:

- Probe: EX3DV4 - SN3857; ConvF(4.94, 4.94, 4.94); Calibrated: 2018.5.31
- Sensor-Surface: 1.4mm (Mechanical Surface Detection)
- Electronics: DAE4 Sn1279; Calibrated: 2018.10.22
- Phantom: SAM1; Type: SAM; Serial: TP-1839
- Measurement SW: DASY52, Version 52.10 (1); SEMCAD X Version 14.6.11 (7439)

**Pin=100mW/Area Scan (71x71x1):** Interpolated grid: dx=1.000 mm, dy=1.000 mm  
Maximum value of SAR (interpolated) = 19.2 W/kg

**Pin=100mW/Zoom Scan (8x8x7)/Cube 0:** Measurement grid: dx=4mm, dy=4mm, dz=1.4mm  
Reference Value = 38.73 V/m; Power Drift = 0.01 dB  
Peak SAR (extrapolated) = 33.5 W/kg  
**SAR(1 g) = 7.76 W/kg; SAR(10 g) = 2.19 W/kg**  
Maximum value of SAR (measured) = 18.8 W/kg



0 dB = 18.8 W/kg = 12.74 dBW/kg

### System Check\_Head\_5750MHz

#### DUT: D5GHzV2-1006

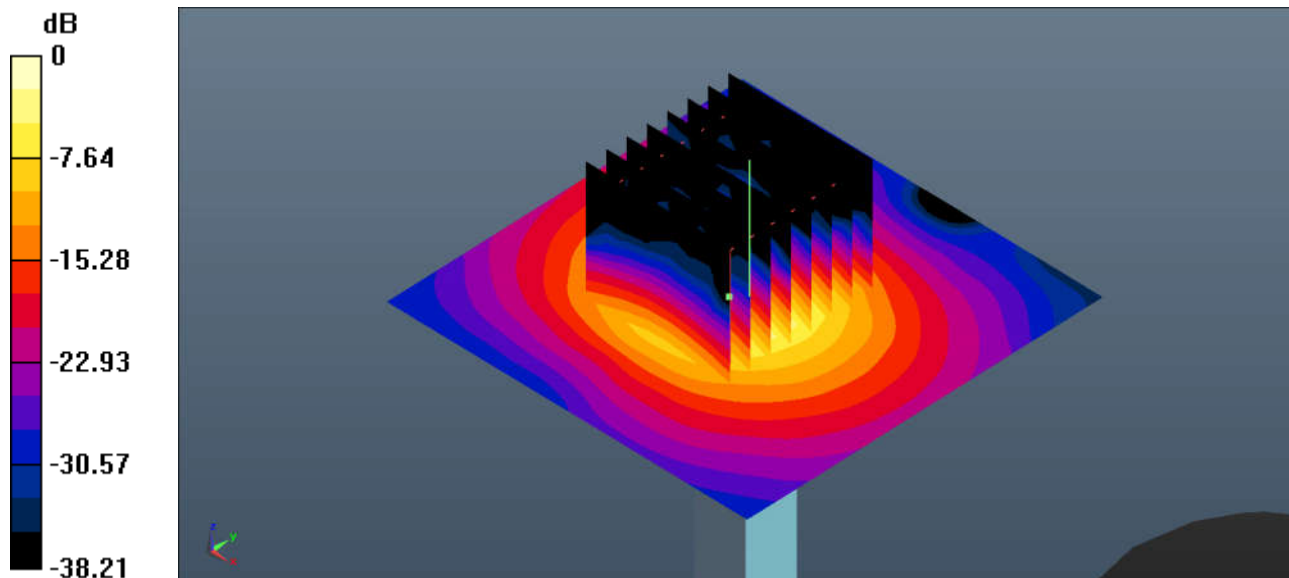
Communication System: UID 0, CW (0); Frequency: 5750 MHz;Duty Cycle: 1:1  
Medium: HSL\_5000 Medium parameters used:  $f = 5750$  MHz;  $\sigma = 5.14$  S/m;  $\epsilon_r = 35.691$ ;  $\rho = 1000$  kg/m<sup>3</sup>  
Ambient Temperature : 23.3 °C ; Liquid Temperature : 22.6 °C

#### DASY5 Configuration:

- Probe: EX3DV4 - SN3857; ConvF(5.23, 5.23, 5.23); Calibrated: 2018.5.31
- Sensor-Surface: 1.4mm (Mechanical Surface Detection)
- Electronics: DAE4 Sn1279; Calibrated: 2018.10.22
- Phantom: SAM1; Type: SAM; Serial: TP-1839
- Measurement SW: DASY52, Version 52.10 (1); SEMCAD X Version 14.6.11 (7439)

**Pin=100mW/Area Scan (71x71x1):** Interpolated grid: dx=1.000 mm, dy=1.000 mm  
Maximum value of SAR (interpolated) = 17.8 W/kg

**Pin=100mW/Zoom Scan (8x8x7)/Cube 0:** Measurement grid: dx=4mm, dy=4mm, dz=1.4mm  
Reference Value = 37.78 V/m; Power Drift = 0.04 dB  
Peak SAR (extrapolated) = 33.4 W/kg  
**SAR(1 g) = 7.61 W/kg; SAR(10 g) = 2.15 W/kg**  
Maximum value of SAR (measured) = 16.8 W/kg



0 dB = 16.8 W/kg = 12.25 dBW/kg

**System Check\_Body\_835MHz**

**DUT: D835V2-4d151**

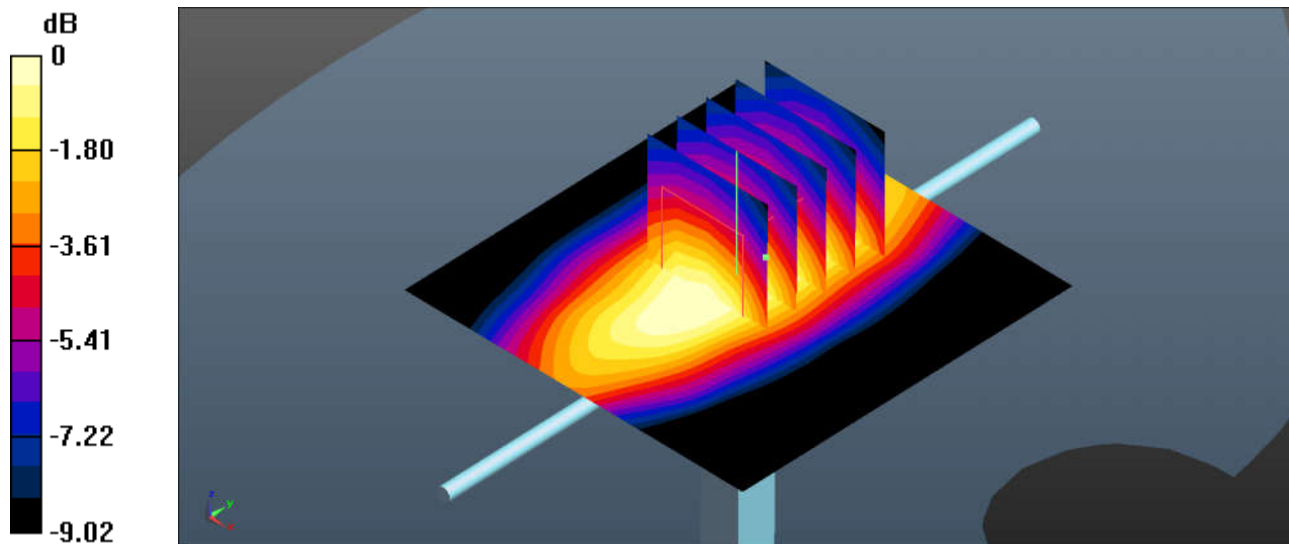
Communication System: UID 0, CW (0); Frequency: 835 MHz; Duty Cycle: 1:1  
 Medium: MSL\_850 Medium parameters used:  $f = 835 \text{ MHz}$ ;  $\sigma = 0.998 \text{ S/m}$ ;  $\epsilon_r = 54.644$ ;  $\rho = 1000 \text{ kg/m}^3$   
 Ambient Temperature :  $23.3 \text{ }^\circ\text{C}$  ; Liquid Temperature :  $22.6 \text{ }^\circ\text{C}$

**DASY5 Configuration:**

- Probe: EX3DV4 - SN3843; ConvF(9.03, 9.03, 9.03); Calibrated: 2018.9.27
- Sensor-Surface: 1.4mm (Mechanical Surface Detection)
- Electronics: DAE4 Sn1338; Calibrated: 2018.12.3
- Phantom: SAM2; Type: SAM; Serial: TP-1754
- Measurement SW: DASY52, Version 52.10 (1); SEMCAD X Version 14.6.11 (7439)

**Pin=250mW/Area Scan (61x61x1):** Interpolated grid:  $dx=1.500 \text{ mm}$ ,  $dy=1.500 \text{ mm}$   
 Maximum value of SAR (interpolated) =  $2.84 \text{ W/kg}$

**Pin=250mW/Zoom Scan (5x5x7)/Cube 0:** Measurement grid:  $dx=8\text{mm}$ ,  $dy=8\text{mm}$ ,  $dz=5\text{mm}$   
 Reference Value =  $47.47 \text{ V/m}$ ; Power Drift =  $-0.10 \text{ dB}$   
 Peak SAR (extrapolated) =  $2.89 \text{ W/kg}$   
**SAR(1 g) =  $2.35 \text{ W/kg}$ ; SAR(10 g) =  $1.61 \text{ W/kg}$**   
 Maximum value of SAR (measured) =  $2.65 \text{ W/kg}$



0 dB =  $2.65 \text{ W/kg} = 3.34 \text{ dBW/kg}$

### System Check\_Body\_1900MHz

#### DUT: D1900V2-5d170

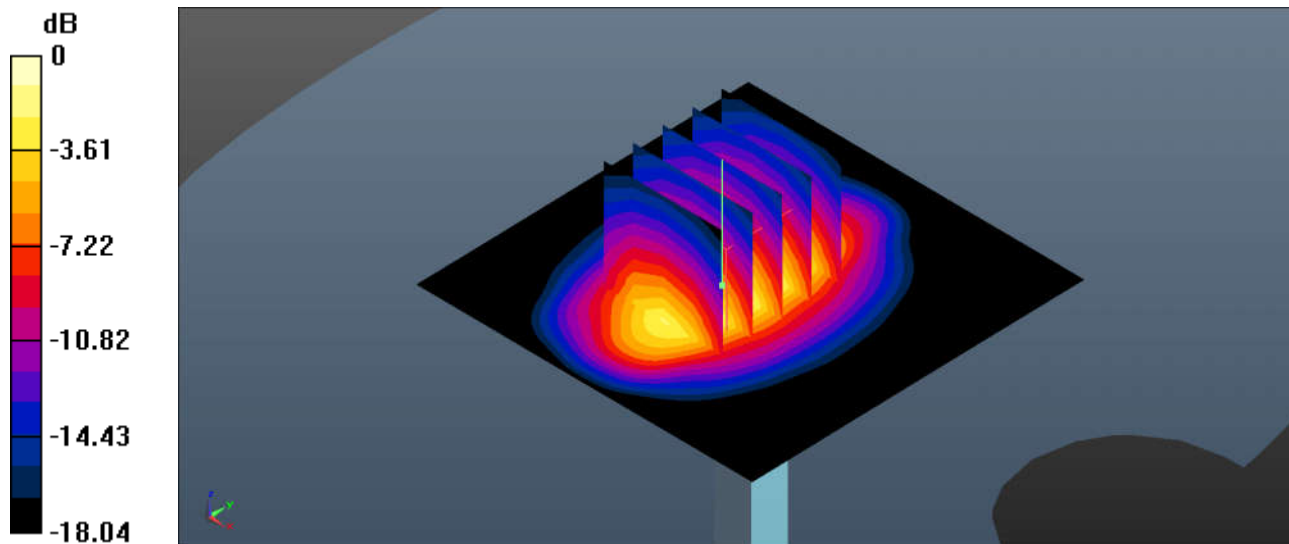
Communication System: UID 0, CW (0); Frequency: 1900 MHz; Duty Cycle: 1:1  
Medium: MSL\_1900 Medium parameters used:  $f = 1900$  MHz;  $\sigma = 1.553$  S/m;  $\epsilon_r = 52.672$ ;  $\rho = 1000$  kg/m<sup>3</sup>  
Ambient Temperature : 23.4 °C ; Liquid Temperature : 22.8 °C

#### DASY5 Configuration:

- Probe: EX3DV4 - SN3843; ConvF(7.07, 7.07, 7.07); Calibrated: 2018.9.27
- Sensor-Surface: 1.4mm (Mechanical Surface Detection)
- Electronics: DAE4 Sn1338; Calibrated: 2018.12.3
- Phantom: SAM2; Type: SAM; Serial: TP-1754
- Measurement SW: DASY52, Version 52.10 (1); SEMCAD X Version 14.6.11 (7439)

**Pin=250mW/Area Scan (61x61x1):** Interpolated grid: dx=1.500 mm, dy=1.500 mm  
Maximum value of SAR (interpolated) = 13.7 W/kg

**Pin=250mW/Zoom Scan (5x5x7)/Cube 0:** Measurement grid: dx=8mm, dy=8mm, dz=5mm  
Reference Value = 80.26 V/m; Power Drift = 0.12 dB  
Peak SAR (extrapolated) = 17.3 W/kg  
**SAR(1 g) = 9.61 W/kg; SAR(10 g) = 4.91 W/kg**  
Maximum value of SAR (measured) = 13.5 W/kg



0 dB = 13.5 W/kg = 9.56 dBW/kg

### System Check\_Body\_2450MHz

#### DUT: D2450V2-908

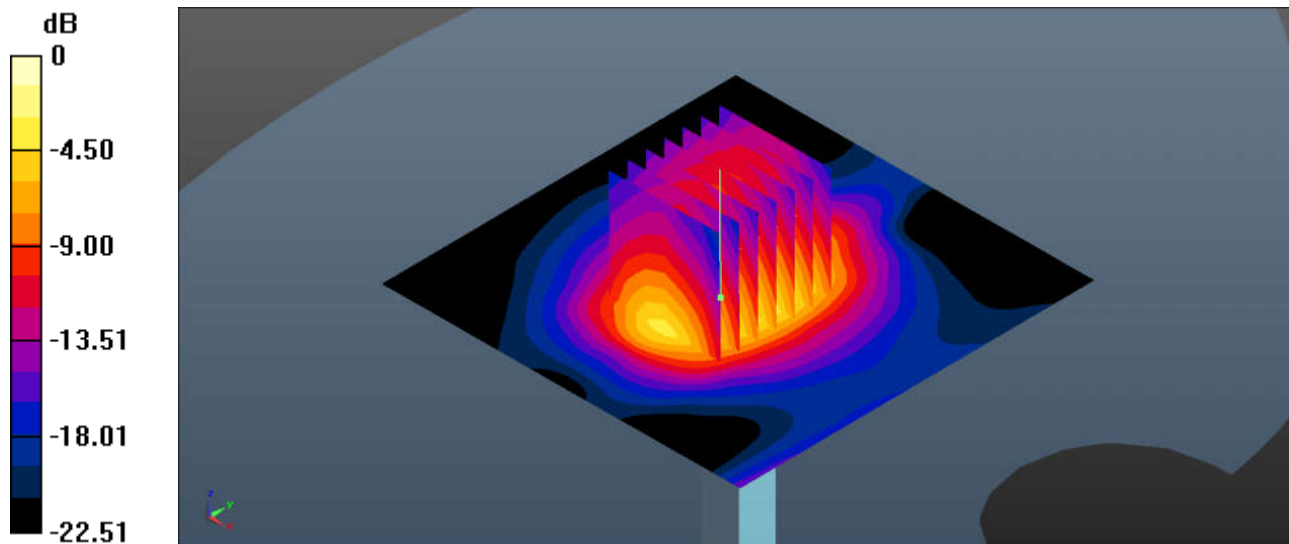
Communication System: UID 0, CW (0); Frequency: 2450 MHz; Duty Cycle: 1:1  
Medium: MSL\_2450 Medium parameters used:  $f = 2450$  MHz;  $\sigma = 2.007$  S/m;  $\epsilon_r = 53.183$ ;  $\rho = 1000$  kg/m<sup>3</sup>  
Ambient Temperature : 23.2 °C ; Liquid Temperature : 22.6 °C

#### DASY5 Configuration:

- Probe: EX3DV4 - SN3843; ConvF(7.02, 7.02, 7.02); Calibrated: 2018.9.27
- Sensor-Surface: 1.4mm (Mechanical Surface Detection)
- Electronics: DAE4 Sn1338; Calibrated: 2018.12.3
- Phantom: SAM2; Type: SAM; Serial: TP-1754
- Measurement SW: DASY52, Version 52.10 (1); SEMCAD X Version 14.6.11 (7439)

**Pin=250mW/Area Scan (81x81x1):** Interpolated grid: dx=1.200 mm, dy=1.200 mm  
Maximum value of SAR (interpolated) = 20.9 W/kg

**Pin=250mW/Zoom Scan (7x7x7)/Cube 0:** Measurement grid: dx=5mm, dy=5mm, dz=5mm  
Reference Value = 88.57 V/m; Power Drift = -0.07 dB  
Peak SAR (extrapolated) = 28.3 W/kg  
**SAR(1 g) = 13.2 W/kg; SAR(10 g) = 6.11 W/kg**  
Maximum value of SAR (measured) = 21.3 W/kg



0 dB = 21.3 W/kg = 8.98 dBW/kg

### System Check\_Body\_2600MHz

#### DUT: D2600V2-1061

Communication System: UID 0, CW (0); Frequency: 2600 MHz; Duty Cycle: 1:1

Medium: MSL\_2600 Medium parameters used:  $f = 2600$  MHz;  $\sigma = 2.18$  S/m;  $\epsilon_r = 51.733$ ;  $\rho = 1000$  kg/m<sup>3</sup>

Ambient Temperature : 23.3 °C ; Liquid Temperature : 22.7 °C

#### DASY5 Configuration:

- Probe: EX3DV4 - SN3843; ConvF(6.7, 6.7, 6.7); Calibrated: 2018.9.27
- Sensor-Surface: 1.4mm (Mechanical Surface Detection)
- Electronics: DAE4 Sn1338; Calibrated: 2018.12.3
- Phantom: SAM2; Type: SAM; Serial: TP-1754
- Measurement SW: DASY52, Version 52.10 (1); SEMCAD X Version 14.6.11 (7439)

**Pin=250mW/Area Scan (81x81x1):** Interpolated grid: dx=1.200 mm, dy=1.200 mm

Maximum value of SAR (interpolated) = 21.5 W/kg

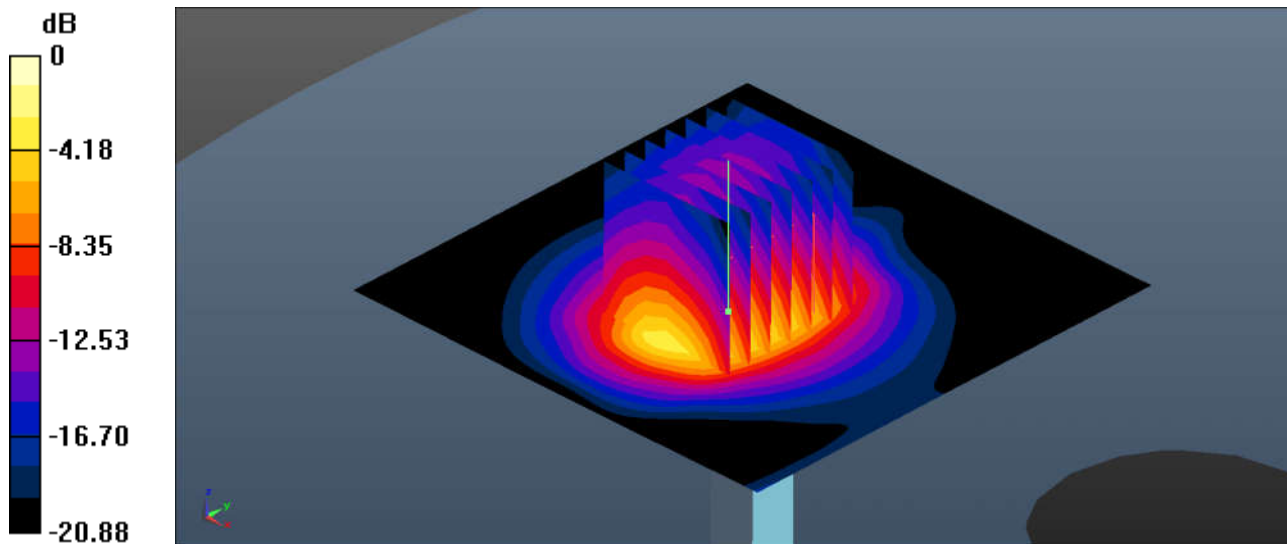
**Pin=250mW/Zoom Scan (7x7x7)/Cube 0:** Measurement grid: dx=5mm, dy=5mm, dz=5mm

Reference Value = 82.4 V/m; Power Drift = -0.09 dB

Peak SAR (extrapolated) = 27.4 W/kg

**SAR(1 g) = 14.1 W/kg; SAR(10 g) = 6.42 W/kg**

Maximum value of SAR (measured) = 21.4 W/kg



0 dB = 21.4 W/kg = 9.61 dBW/kg

### System Check\_Body\_5250MHz

#### DUT: D5GHzV2-1006

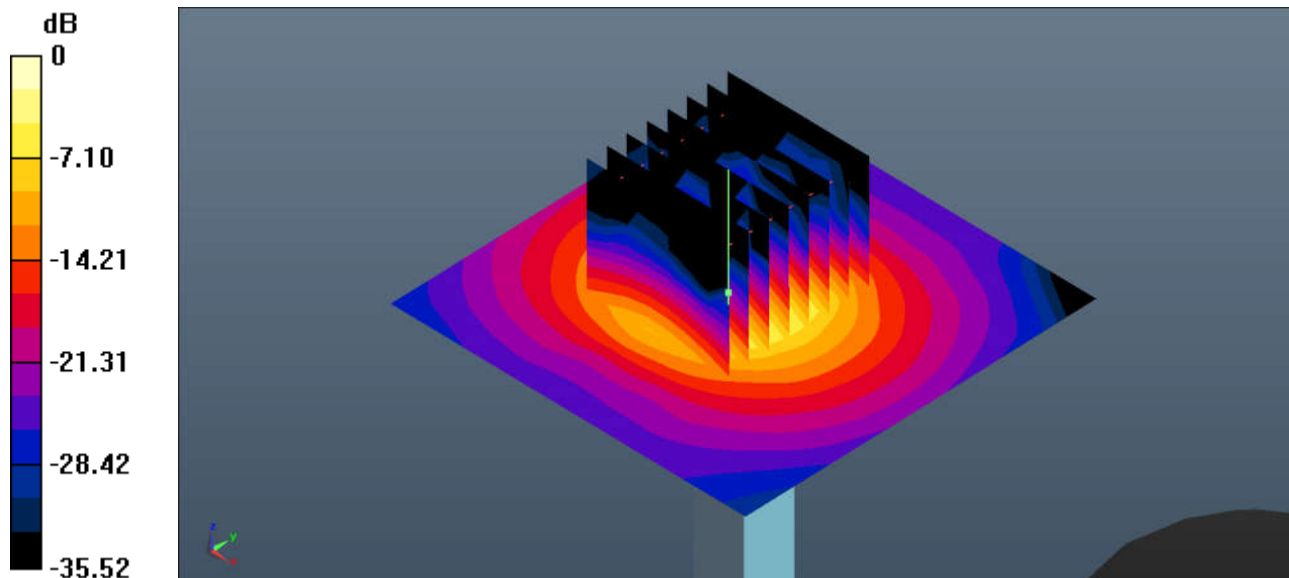
Communication System: UID 0, CW (0); Frequency: 5250 MHz; Duty Cycle: 1:1  
Medium: MSL\_5000 Medium parameters used:  $f = 5250$  MHz;  $\sigma = 5.468$  S/m;  $\epsilon_r = 47.671$ ;  $\rho = 1000$  kg/m<sup>3</sup>  
Ambient Temperature : 23.4 °C ; Liquid Temperature : 22.9 °C

#### DASY5 Configuration:

- Probe: EX3DV4 - SN3857; ConvF(4.4, 4.4, 4.4); Calibrated: 2018.5.31
- Sensor-Surface: 1.4mm (Mechanical Surface Detection)
- Electronics: DAE4 Sn1279; Calibrated: 2018.10.22
- Phantom: SAM2; Type: SAM; Serial: TP-1754
- Measurement SW: DASY52, Version 52.10 (1); SEMCAD X Version 14.6.11 (7439)

**Pin=100mW/Area Scan (71x71x1):** Interpolated grid: dx=1.000 mm, dy=1.000 mm  
Maximum value of SAR (interpolated) = 16.9 W/kg

**Pin=100mW/Zoom Scan (8x8x7)/Cube 0:** Measurement grid: dx=4mm, dy=4mm, dz=1.4mm  
Reference Value = 38.33 V/m; Power Drift = 0.01 dB  
Peak SAR (extrapolated) = 28.5 W/kg  
**SAR(1 g) = 7.61 W/kg; SAR(10 g) = 2.15 W/kg**  
Maximum value of SAR (measured) = 16.6 W/kg



0 dB = 16.6 W/kg = 12.20 dBW/kg

### System Check\_Body\_5600MHz

#### DUT: D5GHzV2-1006

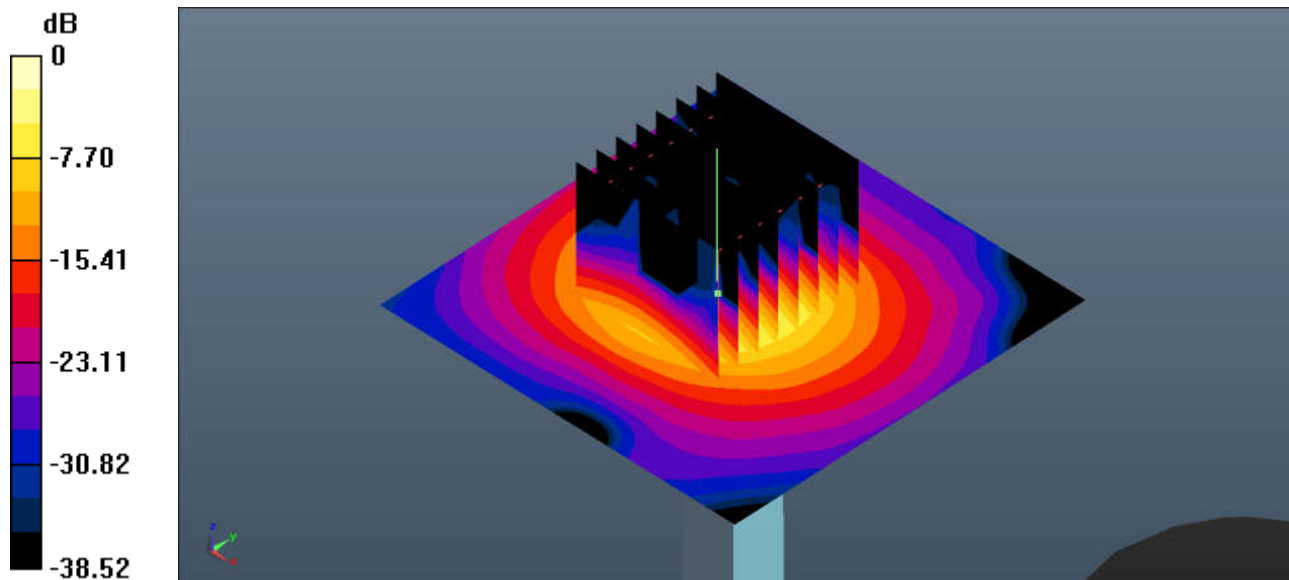
Communication System: UID 0, CW (0); Frequency: 5600 MHz; Duty Cycle: 1:1  
Medium: MSL\_5000 Medium parameters used:  $f = 5600$  MHz;  $\sigma = 5.92$  S/m;  $\epsilon_r = 47.087$ ;  $\rho = 1000$  kg/m<sup>3</sup>  
Ambient Temperature : 23.3 °C ; Liquid Temperature : 22.7 °C

#### DASY5 Configuration:

- Probe: EX3DV4 - SN3857; ConvF(3.98, 3.98, 3.98); Calibrated: 2018.5.31
- Sensor-Surface: 1.4mm (Mechanical Surface Detection)
- Electronics: DAE4 Sn1279; Calibrated: 2018.10.22
- Phantom: SAM2; Type: SAM; Serial: TP-1754
- Measurement SW: DASY52, Version 52.10 (1); SEMCAD X Version 14.6.11 (7439)

**Pin=100mW/Area Scan (71x71x1):** Interpolated grid: dx=1.000 mm, dy=1.000 mm  
Maximum value of SAR (interpolated) = 19.0 W/kg

**Pin=100mW/Zoom Scan (8x8x7)/Cube 0:** Measurement grid: dx=4mm, dy=4mm, dz=1.4mm  
Reference Value = 36.69 V/m; Power Drift = 0.03 dB  
Peak SAR (extrapolated) = 33.5 W/kg  
**SAR(1 g) = 7.62 W/kg; SAR(10 g) = 2.11 W/kg**  
Maximum value of SAR (measured) = 18.5 W/kg



0 dB = 18.5 W/kg = 12.67 dBW/kg

### System Check\_Body\_5750MHz

#### DUT: D5GHzV2-1006

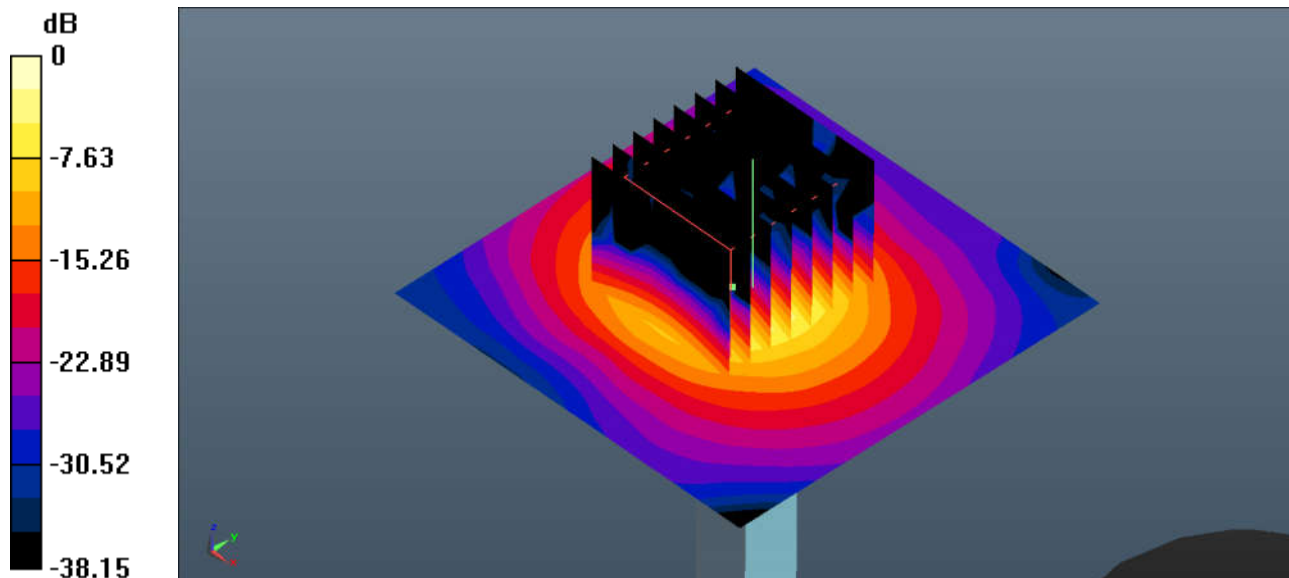
Communication System: UID 0, CW (0); Frequency: 5750 MHz; Duty Cycle: 1:1  
Medium: MSL\_5000 Medium parameters used:  $f = 5750$  MHz;  $\sigma = 6.124$  S/m;  $\epsilon_r = 46.854$ ;  $\rho = 1000$  kg/m<sup>3</sup>  
Ambient Temperature : 23.5 °C ; Liquid Temperature : 22.8 °C

#### DASY5 Configuration:

- Probe: EX3DV4 - SN3857; ConvF(4.31, 4.31, 4.31); Calibrated: 2018.5.31
- Sensor-Surface: 1.4mm (Mechanical Surface Detection)
- Electronics: DAE4 Sn1279; Calibrated: 2018.10.22
- Phantom: SAM2; Type: SAM; Serial: TP-1754
- Measurement SW: DASY52, Version 52.10 (1); SEMCAD X Version 14.6.11 (7439)

**Pin=100mW/Area Scan (71x71x1):** Interpolated grid: dx=1.000 mm, dy=1.000 mm  
Maximum value of SAR (interpolated) = 17.0 W/kg

**Pin=100mW/Zoom Scan (8x8x7)/Cube 0:** Measurement grid: dx=4mm, dy=4mm, dz=1.4mm  
Reference Value = 36.77 V/m; Power Drift = 0.08 dB  
Peak SAR (extrapolated) = 32.3 W/kg  
**SAR(1 g) = 7.33 W/kg; SAR(10 g) = 2.06 W/kg**  
Maximum value of SAR (measured) = 16.9 W/kg



0 dB = 16.9 W/kg = 12.28 dBW/kg



**Appendix B. Plots of High SAR Measurement**

The plots are shown as follows.

### 01\_GSM850\_GPRS 3 Tx slots\_Right Cheek\_0mm\_Ch251

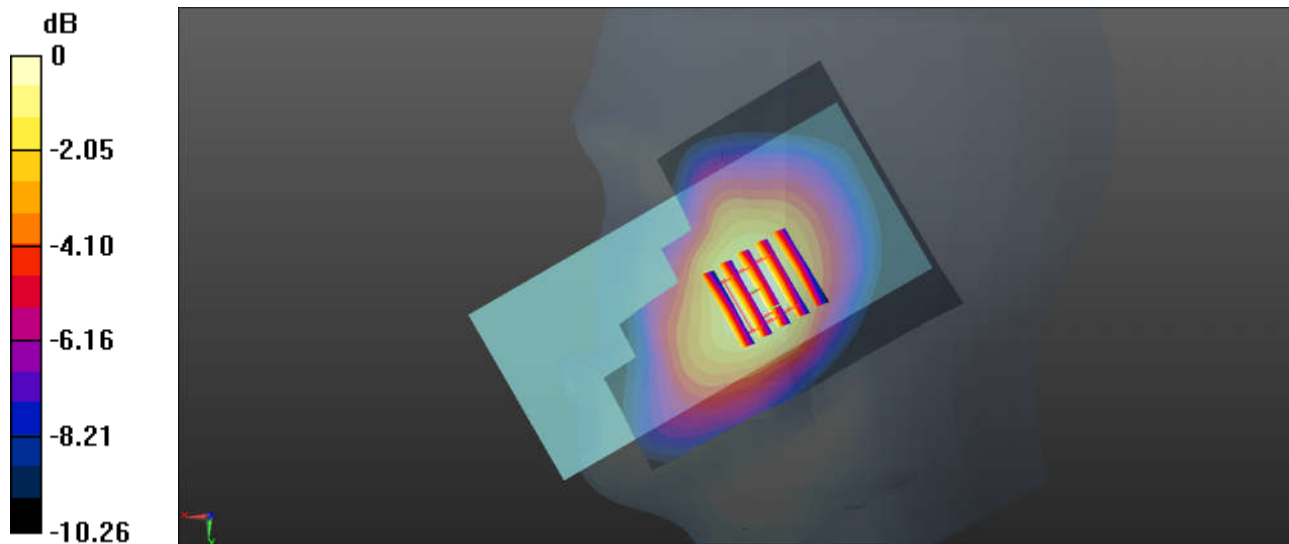
Communication System: UID 0, GSM850-3UP (0); Frequency: 848.8 MHz; Duty Cycle: 1:2.77  
Medium: HSL\_850 Medium parameters used:  $f = 848.8$  MHz;  $\sigma = 0.924$  S/m;  $\epsilon_r = 41.428$ ;  $\rho = 1000$  kg/m<sup>3</sup>  
Ambient Temperature : 23.1 °C ; Liquid Temperature : 22.5 °C

#### DASY5 Configuration:

- Probe: EX3DV4 - SN3843; ConvF(9.01, 9.01, 9.01); Calibrated: 2018.9.27
- Sensor-Surface: 1.4mm (Mechanical Surface Detection)
- Electronics: DAE4 Sn1338; Calibrated: 2018.12.3
- Phantom: SAM1; Type: SAM; Serial: TP-1839
- Measurement SW: DASY52, Version 52.10 (1); SEMCAD X Version 14.6.11 (7439)

**Ch850/Area Scan (71x91x1):** Interpolated grid: dx=1.500 mm, dy=1.500 mm  
Maximum value of SAR (interpolated) = 0.464 W/kg

**Ch850/Zoom Scan (5x5x7)/Cube 0:** Measurement grid: dx=8mm, dy=8mm, dz=5mm  
Reference Value = 6.630 V/m; Power Drift = -0.01 dB  
Peak SAR (extrapolated) = 0.538 W/kg  
**SAR(1 g) = 0.353 W/kg; SAR(10 g) = 0.257 W/kg**  
Maximum value of SAR (measured) = 0.472 W/kg



0 dB = 0.472 W/kg = -3.26 dBW/kg

### 02\_GSM1900\_GPRS 3 Tx slots\_Left Cheek\_0mm\_Ch810

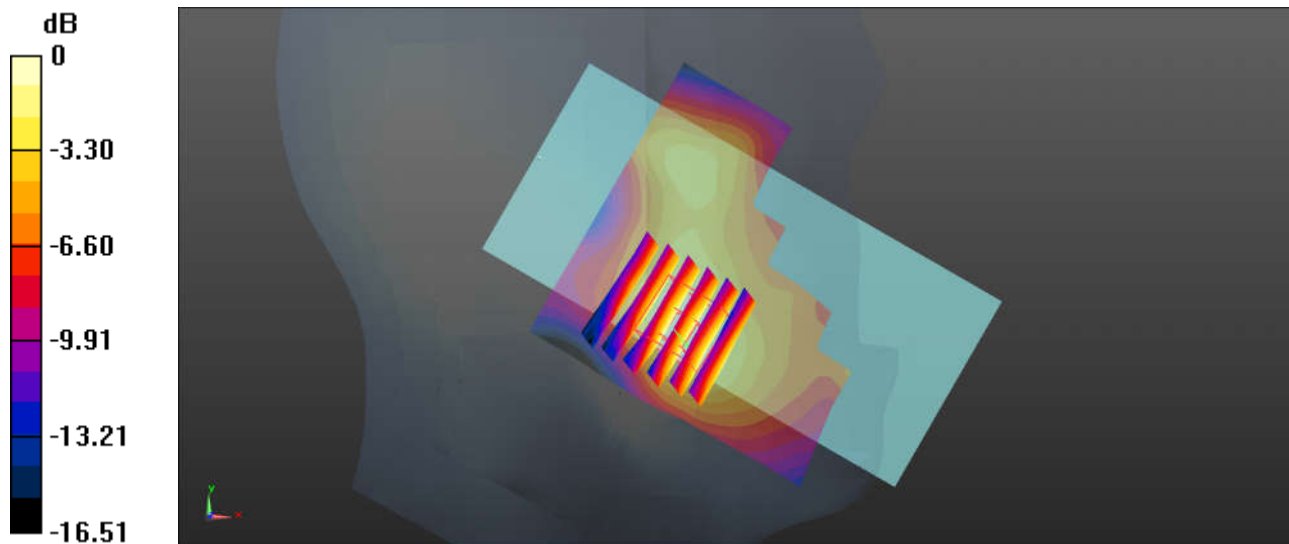
Communication System: UID 0, PCS-3UP (0); Frequency: 1909.8 MHz;Duty Cycle: 1:2.77  
Medium: HSL\_1900 Medium parameters used:  $f = 1909.8$  MHz;  $\sigma = 1.45$  S/m;  $\epsilon_r = 38.921$ ;  $\rho = 1000$ kg/m<sup>3</sup>  
Ambient Temperature : 23.3 °C ; Liquid Temperature : 22.7 °C

#### DASY5 Configuration:

- Probe: EX3DV4 - SN3843; ConvF(7.4, 7.4, 7.4); Calibrated: 2018.9.27
- Sensor-Surface: 1.4mm (Mechanical Surface Detection)
- Electronics: DAE4 Sn1338; Calibrated: 2018.12.3
- Phantom: SAM2; Type: SAM; Serial: TP-1754
- Measurement SW: DASY52, Version 52.10 (1); SEMCAD X Version 14.6.11 (7439)

**Ch810/Area Scan (71x71x1):** Interpolated grid: dx=1.500 mm, dy=1.500 mm  
Maximum value of SAR (interpolated) = 0.0841 W/kg

**Ch810/Zoom Scan (6x6x7)/Cube 0:** Measurement grid: dx=8mm, dy=8mm, dz=5mm  
Reference Value = 1.276 V/m; Power Drift = -0.06 dB  
Peak SAR (extrapolated) = 0.104 W/kg  
**SAR(1 g) = 0.063 W/kg; SAR(10 g) = 0.038 W/kg**  
Maximum value of SAR (measured) = 0.0853 W/kg



0 dB = 0.0853 W/kg = -10.69 dBW/kg

### 03\_WCDMA Band V\_RMC 12.2Kbps\_Right Cheek\_0mm\_Ch4132

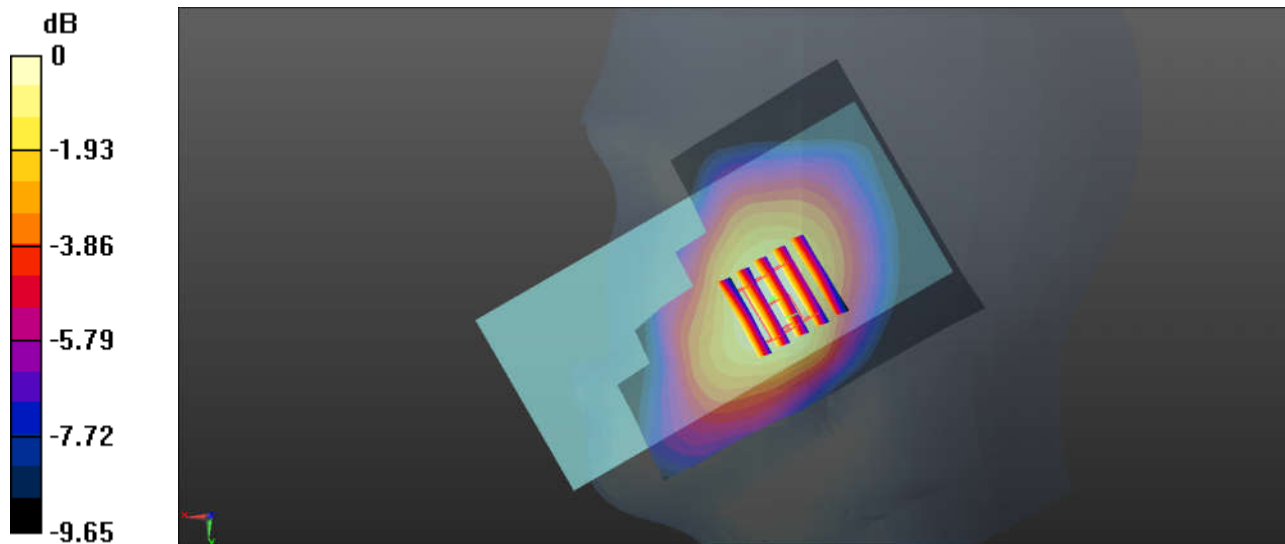
Communication System: UID 0, WCDMA (0); Frequency: 826.4 MHz; Duty Cycle: 1:1  
Medium: HSL\_850 Medium parameters used:  $f = 826.4$  MHz;  $\sigma = 0.901$  S/m;  $\epsilon_r = 41.672$ ;  $\rho = 1000$  kg/m<sup>3</sup>  
Ambient Temperature : 23.1 °C ; Liquid Temperature : 22.5 °C

#### DASY5 Configuration:

- Probe: EX3DV4 - SN3843; ConvF(9.01, 9.01, 9.01); Calibrated: 2018.9.27
- Sensor-Surface: 1.4mm (Mechanical Surface Detection)
- Electronics: DAE4 Sn1338; Calibrated: 2018.12.3
- Phantom: SAM1; Type: SAM; Serial: TP-1839
- Measurement SW: DASY52, Version 52.10 (1); SEMCAD X Version 14.6.11 (7439)

**Ch4132/Area Scan (71x91x1):** Interpolated grid: dx=1.500 mm, dy=1.500 mm  
Maximum value of SAR (interpolated) = 0.360 W/kg

**Ch4132/Zoom Scan (5x5x7)/Cube 0:** Measurement grid: dx=8mm, dy=8mm, dz=5mm  
Reference Value = 0.9980 V/m; Power Drift = 0.07 dB  
Peak SAR (extrapolated) = 0.408 W/kg  
**SAR(1 g) = 0.264 W/kg; SAR(10 g) = 0.196 W/kg**  
Maximum value of SAR (measured) = 0.352 W/kg



0 dB = 0.352 W/kg = -4.53 dBW/kg

### 04\_WCDMA Band II\_RMC 12.2Kbps\_Left Cheek\_0mm\_Ch9538

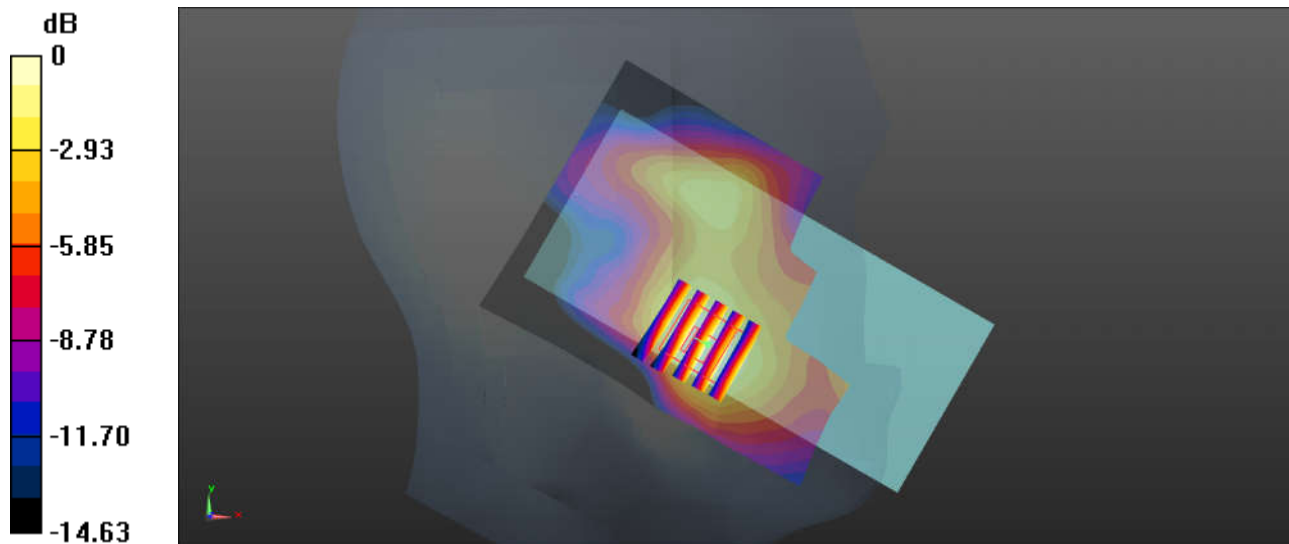
Communication System: UID 0, WCDMA (0); Frequency: 1907.6 MHz; Duty Cycle: 1:1  
Medium: HSL\_1900 Medium parameters used:  $f = 1907.6$  MHz;  $\sigma = 1.447$  S/m;  $\epsilon_r = 38.934$ ;  $\rho = 1000$  kg/m<sup>3</sup>  
Ambient Temperature : 23.3 °C ; Liquid Temperature : 22.7 °C

#### DASY5 Configuration:

- Probe: EX3DV4 - SN3843; ConvF(7.4, 7.4, 7.4); Calibrated: 2018.9.27
- Sensor-Surface: 1.4mm (Mechanical Surface Detection)
- Electronics: DAE4 Sn1338; Calibrated: 2018.12.3
- Phantom: SAM2; Type: SAM; Serial: TP-1754
- Measurement SW: DASY52, Version 52.10 (1); SEMCAD X Version 14.6.11 (7439)

**Ch9538/Area Scan (71x91x1):** Interpolated grid: dx=1.500 mm, dy=1.500 mm  
Maximum value of SAR (interpolated) = 0.147 W/kg

**Ch9538/Zoom Scan (5x5x7)/Cube 0:** Measurement grid: dx=8mm, dy=8mm, dz=5mm  
Reference Value = 2.951 V/m; Power Drift = 0.06 dB  
Peak SAR (extrapolated) = 0.187 W/kg  
**SAR(1 g) = 0.113 W/kg; SAR(10 g) = 0.069 W/kg**  
Maximum value of SAR (measured) = 0.148 W/kg



0 dB = 0.148 W/kg = -8.30 dBW/kg

### 05\_LTE Band 5\_10M\_QPSK\_1\_0\_Right Cheek\_0mm\_Ch20525

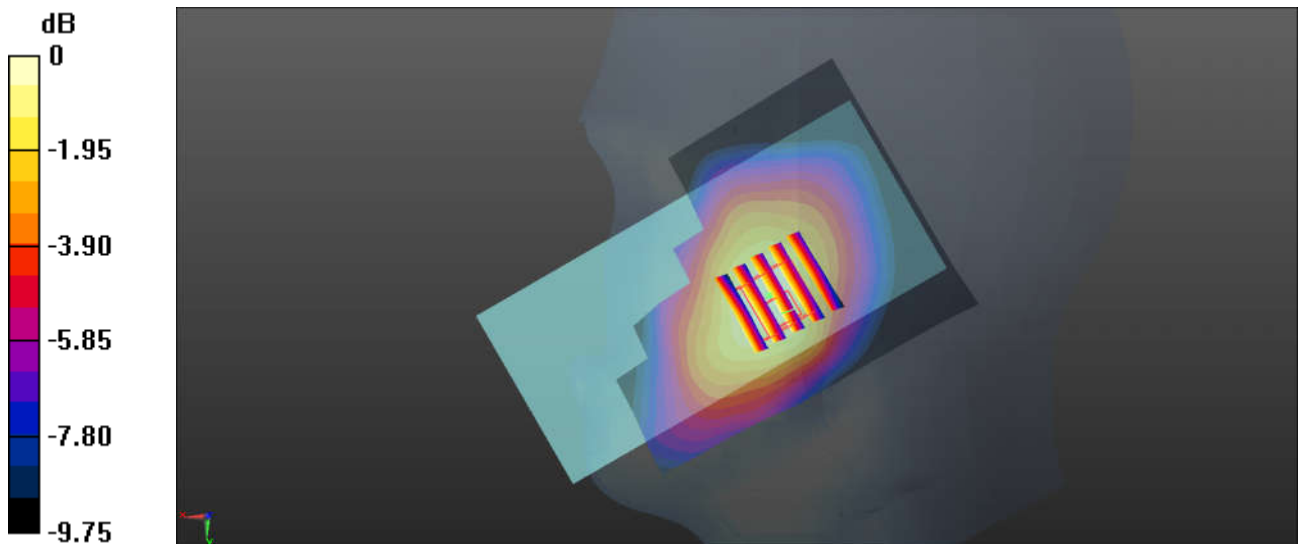
Communication System: UID 0, LTE-FDD (0); Frequency: 836.5 MHz; Duty Cycle: 1:1  
Medium: HSL\_850 Medium parameters used:  $f = 836.5$  MHz;  $\sigma = 0.912$  S/m;  $\epsilon_r = 41.56$ ;  $\rho = 1000$  kg/m<sup>3</sup>  
Ambient Temperature : 23.1 °C ; Liquid Temperature : 22.5 °C

#### DASY5 Configuration:

- Probe: EX3DV4 - SN3843; ConvF(9.01, 9.01, 9.01); Calibrated: 2018.9.27
- Sensor-Surface: 1.4mm (Mechanical Surface Detection)
- Electronics: DAE4 Sn1338; Calibrated: 2018.12.3
- Phantom: SAM1; Type: SAM; Serial: TP-1839
- Measurement SW: DASY52, Version 52.10 (1); SEMCAD X Version 14.6.11 (7439)

**Ch20525/Area Scan (71x91x1):** Interpolated grid: dx=1.500 mm, dy=1.500 mm  
Maximum value of SAR (interpolated) = 0.316 W/kg

**Ch20525/Zoom Scan (5x5x7)/Cube 0:** Measurement grid: dx=8mm, dy=8mm, dz=5mm  
Reference Value = 5.283 V/m; Power Drift = 0.06 dB  
Peak SAR (extrapolated) = 0.371 W/kg  
**SAR(1 g) = 0.241 W/kg; SAR(10 g) = 0.178 W/kg**  
Maximum value of SAR (measured) = 0.321 W/kg



0 dB = 0.321 W/kg = -4.93 dBW/kg

**06\_LTE Band 7\_20M\_QPSK\_1RB\_0Offset\_Left Cheek\_0mm\_Ch21350**

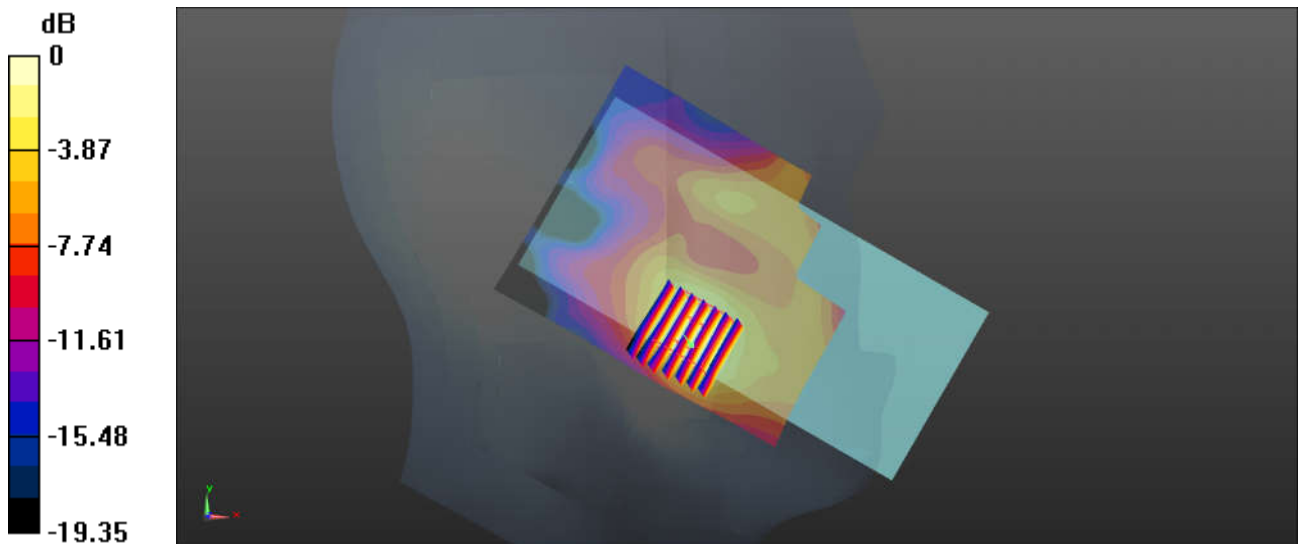
Communication System: UID 0, LTE-FDD (0); Frequency: 2560 MHz; Duty Cycle: 1:1  
 Medium: HSL\_2600 Medium parameters used:  $f = 2560$  MHz;  $\sigma = 1.953$  S/m;  $\epsilon_r = 38.615$ ;  $\rho = 1000$  kg/m<sup>3</sup>  
 Ambient Temperature : 23.2 °C ; Liquid Temperature : 22.6 °C

**DASY5 Configuration:**

- Probe: EX3DV4 - SN3843; ConvF(6.86, 6.86, 6.86); Calibrated: 2018.9.27
- Sensor-Surface: 1.4mm (Mechanical Surface Detection)
- Electronics: DAE4 Sn1338; Calibrated: 2018.12.3
- Phantom: SAM1; Type: SAM; Serial: TP-1839
- Measurement SW: DASY52, Version 52.10 (1); SEMCAD X Version 14.6.11 (7439)

**Ch21350/Area Scan (81x101x1):** Interpolated grid: dx=1.200 mm, dy=1.200 mm  
 Maximum value of SAR (interpolated) = 0.209 W/kg

**Ch21350/Zoom Scan (7x7x7)/Cube 0:** Measurement grid: dx=5mm, dy=5mm, dz=5mm  
 Reference Value = 1.995 V/m; Power Drift = -0.18 dB  
 Peak SAR (extrapolated) = 0.272 W/kg  
**SAR(1 g) = 0.139 W/kg; SAR(10 g) = 0.071 W/kg**  
 Maximum value of SAR (measured) = 0.212 W/kg



0 dB = 0.212 W/kg = -6.74 dBW/kg

**07\_LTE Band 41\_20M\_QPSK\_1RB\_0Offset\_Left Cheek\_0mm\_Ch41140**

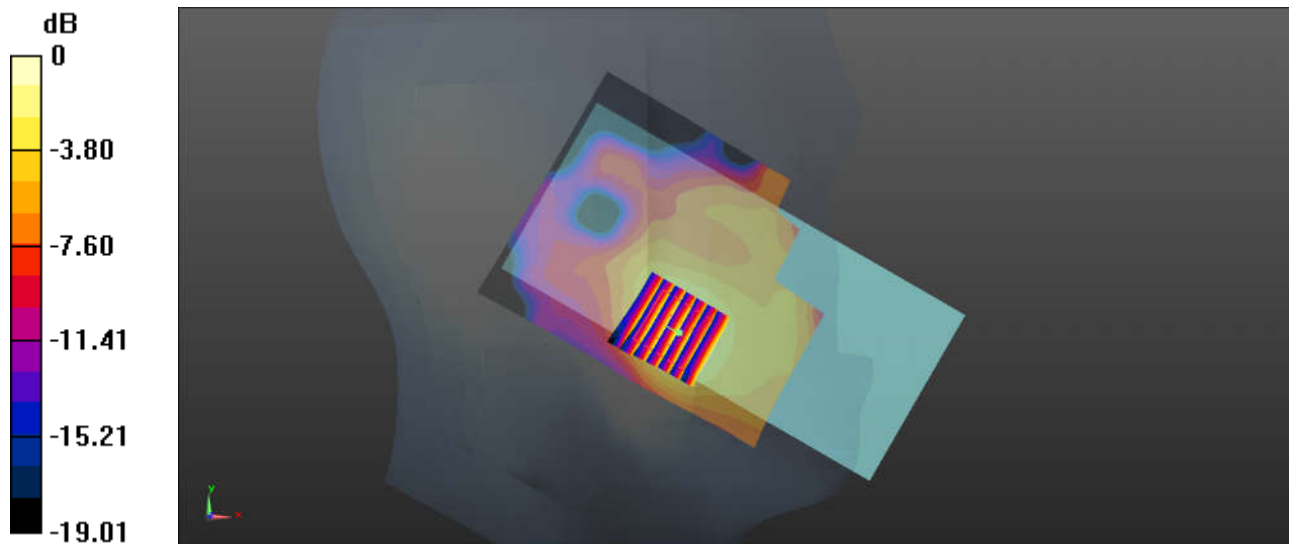
Communication System: UID 0, LTE-TDD (0); Frequency: 2645 MHz; Duty Cycle: 1:1.59  
Medium: HSL\_2600 Medium parameters used:  $f = 2645$  MHz;  $\sigma = 2.051$  S/m;  $\epsilon_r = 38.281$ ;  $\rho = 1000$  kg/m<sup>3</sup>  
Ambient Temperature : 23.2 °C ; Liquid Temperature : 22.6 °C

DASY5 Configuration:

- Probe: EX3DV4 - SN3843; ConvF(6.86, 6.86, 6.86); Calibrated: 2018.9.27
- Sensor-Surface: 1.4mm (Mechanical Surface Detection)
- Electronics: DAE4 Sn1338; Calibrated: 2018.12.3
- Phantom: SAM1; Type: SAM; Serial: TP-1839
- Measurement SW: DASY52, Version 52.10 (1); SEMCAD X Version 14.6.11 (7439)

**Ch41140/Area Scan (81x101x1):** Interpolated grid: dx=1.200 mm, dy=1.200 mm  
Maximum value of SAR (interpolated) = 0.152 W/kg

**Ch41140/Zoom Scan (7x7x7)/Cube 0:** Measurement grid: dx=5mm, dy=5mm, dz=5mm  
Reference Value = 2.277 V/m; Power Drift = -0.07 dB  
Peak SAR (extrapolated) = 0.191 W/kg  
**SAR(1 g) = 0.098 W/kg; SAR(10 g) = 0.050 W/kg**  
Maximum value of SAR (measured) = 0.153 W/kg



0 dB = 0.153 W/kg = -8.15 dBW/kg

### 08\_WLAN2.4GHz\_802.11b 1Mbps\_Left Cheek\_0mm\_Ch1

Communication System: UID 0, WIFI (0); Frequency: 2412 MHz; Duty Cycle: 1:1

Medium: HSL\_2450 Medium parameters used:  $f = 2412$  MHz;  $\sigma = 1.813$  S/m;  $\epsilon_r = 39.041$ ;  $\rho = 1000$  kg/m<sup>3</sup>

Ambient Temperature : 23.4 °C ; Liquid Temperature : 22.8 °C

#### DASY5 Configuration:

- Probe: EX3DV4 - SN3843; ConvF(7.08, 7.08, 7.08); Calibrated: 2018.9.27
- Sensor-Surface: 1.4mm (Mechanical Surface Detection)
- Electronics: DAE4 Sn1338; Calibrated: 2018.12.3
- Phantom: SAM1; Type: SAM; Serial: TP-1839
- Measurement SW: DASY52, Version 52.10 (1); SEMCAD X Version 14.6.11 (7439)

**Ch1/Area Scan (91x81x1):** Interpolated grid: dx=1.200 mm, dy=1.200 mm

Maximum value of SAR (interpolated) = 0.837 W/kg

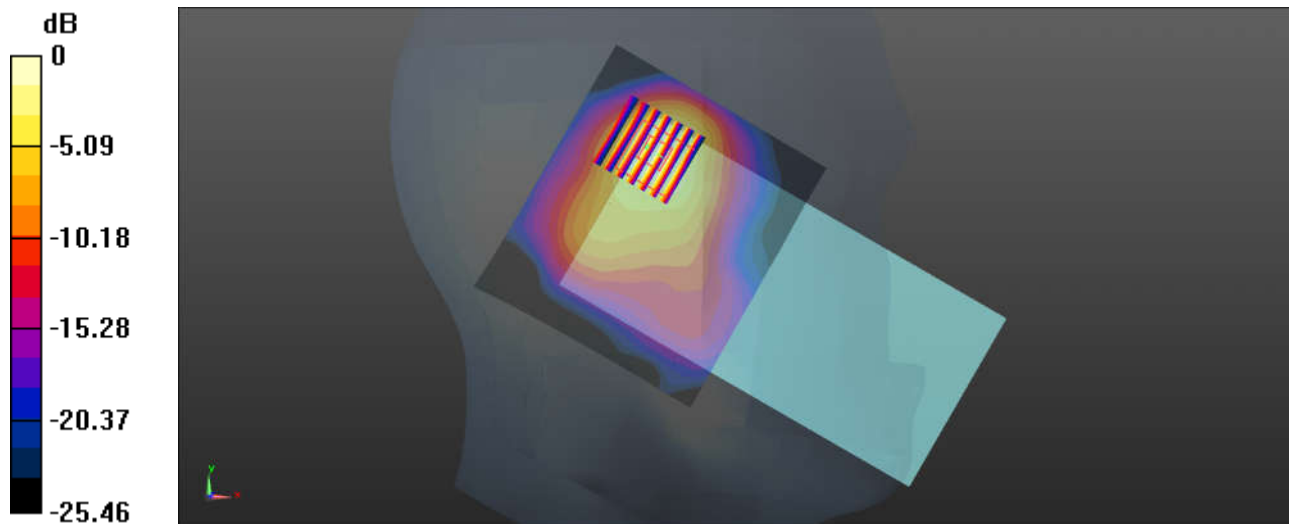
**Ch1/Zoom Scan (7x7x7)/Cube 0:** Measurement grid: dx=5mm, dy=5mm, dz=5mm

Reference Value = 5.302 V/m; Power Drift = 0.03 dB

Peak SAR (extrapolated) = 0.932 W/kg

**SAR(1 g) = 0.471 W/kg; SAR(10 g) = 0.219 W/kg**

Maximum value of SAR (measured) = 0.747 W/kg



0 dB = 0.747 W/kg = -1.27 dBW/kg

### 09\_Bluetooth\_1Mbps\_Left Cheek\_0mm\_Ch39

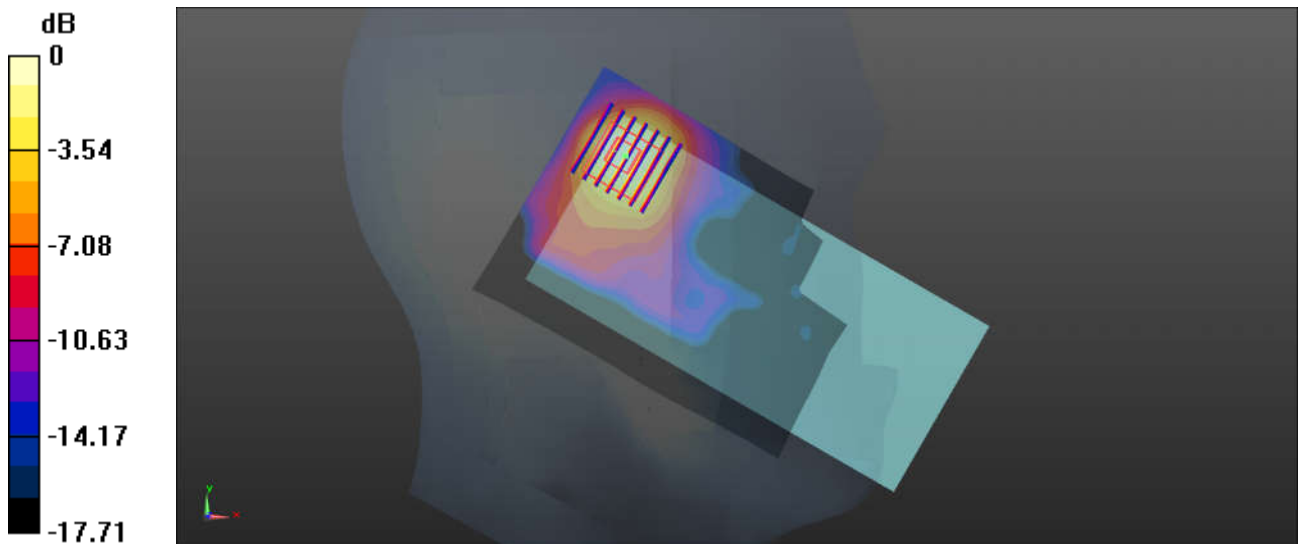
Communication System: UID 0, Bluetooth (0); Frequency: 2441 MHz; Duty Cycle: 1:1.3  
Medium: HSL\_2450 Medium parameters used:  $f = 2441$  MHz;  $\sigma = 1.848$  S/m;  $\epsilon_r = 38.92$ ;  $\rho = 1000$  kg/m<sup>3</sup>  
Ambient Temperature : 23.4 °C ; Liquid Temperature : 22.8 °C

#### DASY5 Configuration:

- Probe: EX3DV4 - SN3843; ConvF(7.08, 7.08, 7.08); Calibrated: 2018.9.27
- Sensor-Surface: 1.4mm (Mechanical Surface Detection)
- Electronics: DAE4 Sn1338; Calibrated: 2018.12.3
- Phantom: SAM1; Type: SAM; Serial: TP-1839
- Measurement SW: DASY52, Version 52.10 (1); SEMCAD X Version 14.6.11 (7439)

**Ch39/Area Scan (81x111x1):** Interpolated grid: dx=1.200 mm, dy=1.200 mm  
Maximum value of SAR (interpolated) = 0.103 W/kg

**Ch39/Zoom Scan (7x7x7)/Cube 0:** Measurement grid: dx=5mm, dy=5mm, dz=5mm  
Reference Value = 3.492 V/m; Power Drift = 0.05 dB  
Peak SAR (extrapolated) = 0.134 W/kg  
**SAR(1 g) = 0.062 W/kg; SAR(10 g) = 0.029 W/kg**  
Maximum value of SAR (measured) = 0.100 W/kg



0 dB = 0.100 W/kg = -10.00 dBW/kg

### 10\_WLAN5.3GHz\_802.11a 6Mbps\_Left Cheek\_0mm\_Ch64

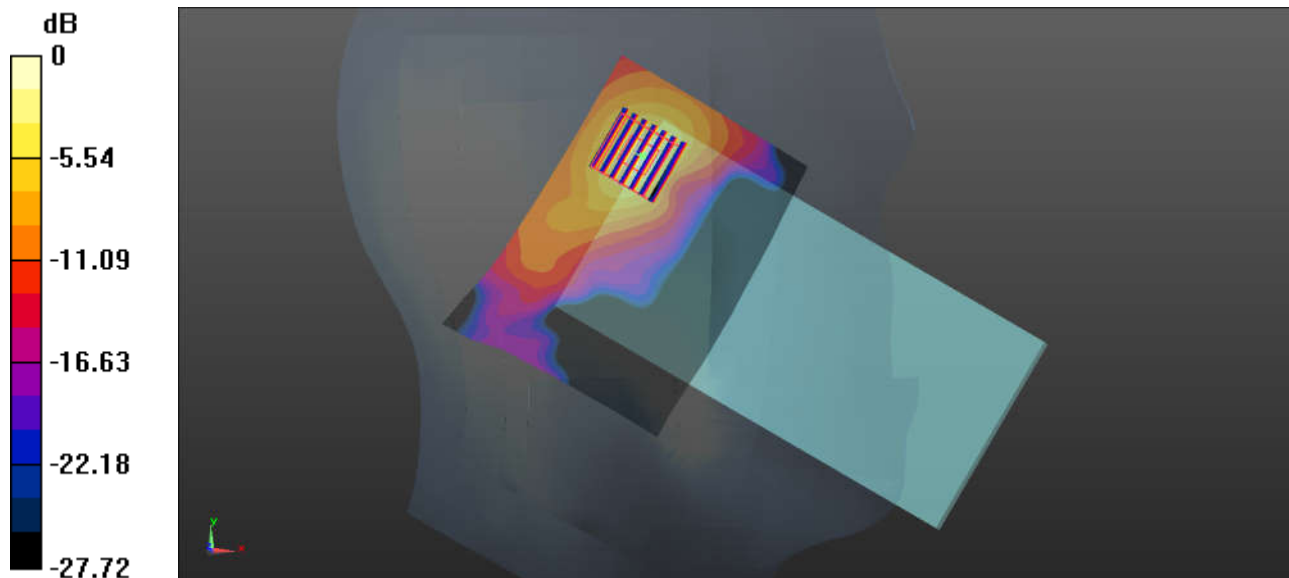
Communication System: UID 0, WIFI (0); Frequency: 5320 MHz; Duty Cycle: 1:1.051  
Medium: HSL\_5000 Medium parameters used:  $f = 5320$  MHz;  $\sigma = 4.696$  S/m;  $\epsilon_r = 36.29$ ;  $\rho = 1000$  kg/m<sup>3</sup>  
Ambient Temperature : 23.4 °C ; Liquid Temperature : 22.8 °C

#### DASY5 Configuration:

- Probe: EX3DV4 - SN3857; ConvF(5.2, 5.2, 5.2); Calibrated: 2018.5.31
- Sensor-Surface: 1.4mm (Mechanical Surface Detection)
- Electronics: DAE4 Sn1279; Calibrated: 2018.10.22
- Phantom: SAM1; Type: SAM; Serial: TP-1839
- Measurement SW: DASY52, Version 52.10 (1); SEMCAD X Version 14.6.11 (7439)

**Ch64/Area Scan (111x81x1):** Interpolated grid: dx=1.000 mm, dy=1.000 mm  
Maximum value of SAR (interpolated) = 1.37 W/kg

**Ch64/Zoom Scan (7x7x7)/Cube 0:** Measurement grid: dx=4mm, dy=4mm, dz=1.4mm  
Reference Value = 8.053 V/m; Power Drift = 0.09 dB  
Peak SAR (extrapolated) = 2.41 W/kg  
**SAR(1 g) = 0.575 W/kg; SAR(10 g) = 0.182 W/kg**  
Maximum value of SAR (measured) = 1.43 W/kg



0 dB = 1.43 W/kg = 1.55 dBW/kg

### 11\_WLAN5.5GHz\_802.11a 6Mbps\_Left Cheek\_0mm\_Ch132

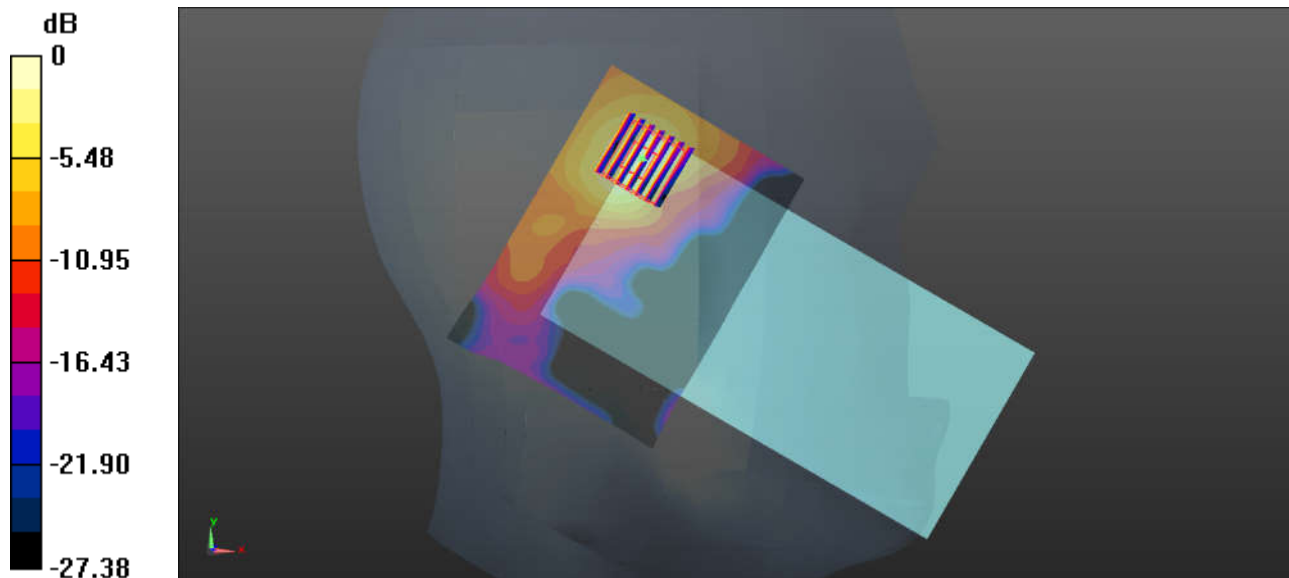
Communication System: UID 0, WIFI (0); Frequency: 5660 MHz; Duty Cycle: 1:1.051  
Medium: HSL\_5000 Medium parameters used:  $f = 5660$  MHz;  $\sigma = 5.047$  S/m;  $\epsilon_r = 35.819$ ;  $\rho = 1000$  kg/m<sup>3</sup>  
Ambient Temperature : 23.3 °C ; Liquid Temperature : 22.7 °C

#### DASY5 Configuration:

- Probe: EX3DV4 - SN3857; ConvF(4.94, 4.94, 4.94); Calibrated: 2018.5.31
- Sensor-Surface: 1.4mm (Mechanical Surface Detection)
- Electronics: DAE4 Sn1279; Calibrated: 2018.10.22
- Phantom: SAM1; Type: SAM; Serial: TP-1839
- Measurement SW: DASY52, Version 52.10 (1); SEMCAD X Version 14.6.11 (7439)

**Ch132/Area Scan (11x81x1):** Interpolated grid: dx=1.000 mm, dy=1.000 mm  
Maximum value of SAR (interpolated) = 1.39 W/kg

**Ch132/Zoom Scan (7x7x7)/Cube 0:** Measurement grid: dx=4mm, dy=4mm, dz=1.4mm  
Reference Value = 7.008 V/m; Power Drift = -0.03 dB  
Peak SAR (extrapolated) = 2.54 W/kg  
**SAR(1 g) = 0.583 W/kg; SAR(10 g) = 0.194 W/kg**  
Maximum value of SAR (measured) = 1.44 W/kg



0 dB = 1.44 W/kg = 1.58 dBW/kg

### 12\_WLAN5.8GHz\_802.11a 6Mbps\_Left Cheek\_0mm\_Ch165

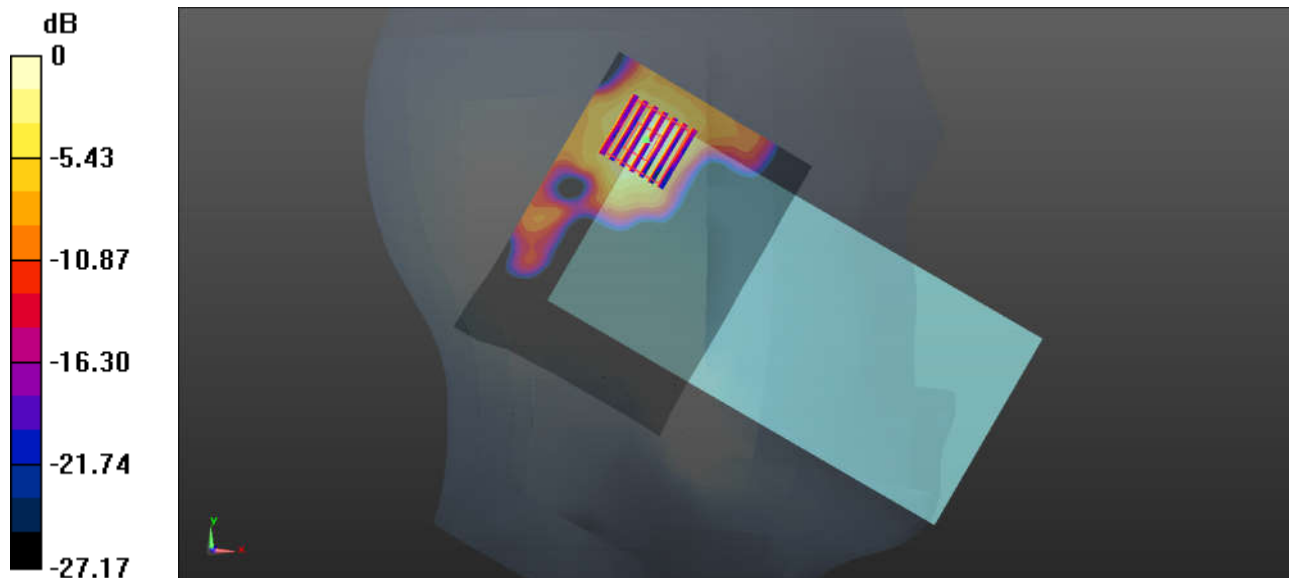
Communication System: UID 0, WIFI (0); Frequency: 5825 MHz; Duty Cycle: 1:1.051  
Medium: HSL\_5000 Medium parameters used:  $f = 5825 \text{ MHz}$ ;  $\sigma = 5.219 \text{ S/m}$ ;  $\epsilon_r = 35.598$ ;  $\rho = 1000 \text{ kg/m}^3$   
Ambient Temperature :  $23.3 \text{ }^\circ\text{C}$  ; Liquid Temperature :  $22.6 \text{ }^\circ\text{C}$

#### DASY5 Configuration:

- Probe: EX3DV4 - SN3857; ConvF(5.23, 5.23, 5.23); Calibrated: 2018.5.31
- Sensor-Surface: 1.4mm (Mechanical Surface Detection)
- Electronics: DAE4 Sn1279; Calibrated: 2018.10.22
- Phantom: SAM1; Type: SAM; Serial: TP-1839
- Measurement SW: DASY52, Version 52.10 (1); SEMCAD X Version 14.6.11 (7439)

**Ch165/Area Scan (11x81x1):** Interpolated grid:  $dx=1.000 \text{ mm}$ ,  $dy=1.000 \text{ mm}$   
Maximum value of SAR (interpolated) =  $0.452 \text{ W/kg}$

**Ch165/Zoom Scan (7x7x7)/Cube 0:** Measurement grid:  $dx=4\text{mm}$ ,  $dy=4\text{mm}$ ,  $dz=1.4\text{mm}$   
Reference Value =  $2.706 \text{ V/m}$ ; Power Drift =  $-0.04 \text{ dB}$   
Peak SAR (extrapolated) =  $0.892 \text{ W/kg}$   
**SAR(1 g) =  $0.182 \text{ W/kg}$ ; SAR(10 g) =  $0.057 \text{ W/kg}$**   
Maximum value of SAR (measured) =  $0.471 \text{ W/kg}$



0 dB =  $0.471 \text{ W/kg}$  =  $-3.27 \text{ dBW/kg}$

### 13\_GSM850\_GPRS (3 Tx slots)\_Back\_5mm\_Ch251

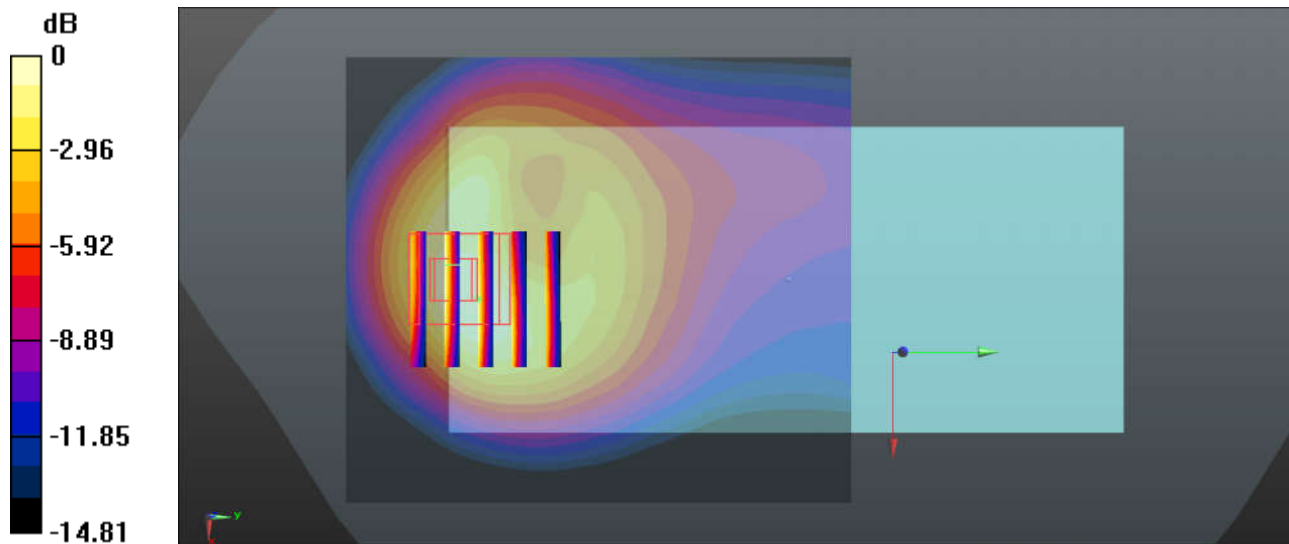
Communication System: UID 0, GSM850-3UP (0); Frequency: 848.8 MHz; Duty Cycle: 1:2.77  
Medium: MSL\_850 Medium parameters used:  $f = 848.8$  MHz;  $\sigma = 1.012$  S/m;  $\epsilon_r = 54.518$ ;  $\rho = 1000$  kg/m<sup>3</sup>  
Ambient Temperature : 23.3 °C ; Liquid Temperature : 22.6 °C

#### DASY5 Configuration:

- Probe: EX3DV4 - SN3843; ConvF(9.03, 9.03, 9.03); Calibrated: 2018.9.27
- Sensor-Surface: 1.4mm (Mechanical Surface Detection)
- Electronics: DAE4 Sn1338; Calibrated: 2018.12.3
- Phantom: SAM2; Type: SAM; Serial: TP-1754
- Measurement SW: DASY52, Version 52.10 (1); SEMCAD X Version 14.6.11 (7439)

**Ch251/Area Scan (71x81x1):** Interpolated grid: dx=1.500 mm, dy=1.500 mm  
Maximum value of SAR (interpolated) = 1.87 W/kg

**Ch251/Zoom Scan (5x5x7)/Cube 0:** Measurement grid: dx=8mm, dy=8mm, dz=5mm  
Reference Value = 12.49 V/m; Power Drift = -0.02 dB  
Peak SAR (extrapolated) = 2.32 W/kg  
**SAR(1 g) = 1.19 W/kg; SAR(10 g) = 0.660 W/kg**  
Maximum value of SAR (measured) = 1.75 W/kg



0 dB = 1.75 W/kg = 2.43 dBW/kg

### 14\_GSM1900\_GPRS 3 Tx slots\_Back\_5mm\_Ch512

Communication System: UID 0, PCS-3UP (0); Frequency: 1850.2 MHz; Duty Cycle: 1:2.77  
Medium: MSL\_1900 Medium parameters used:  $f = 1850.2$  MHz;  $\sigma = 1.493$  S/m;  $\epsilon_r = 52.88$ ;  $\rho = 1000$  kg/m<sup>3</sup>  
Ambient Temperature : 23.4 °C ; Liquid Temperature : 22.8 °C

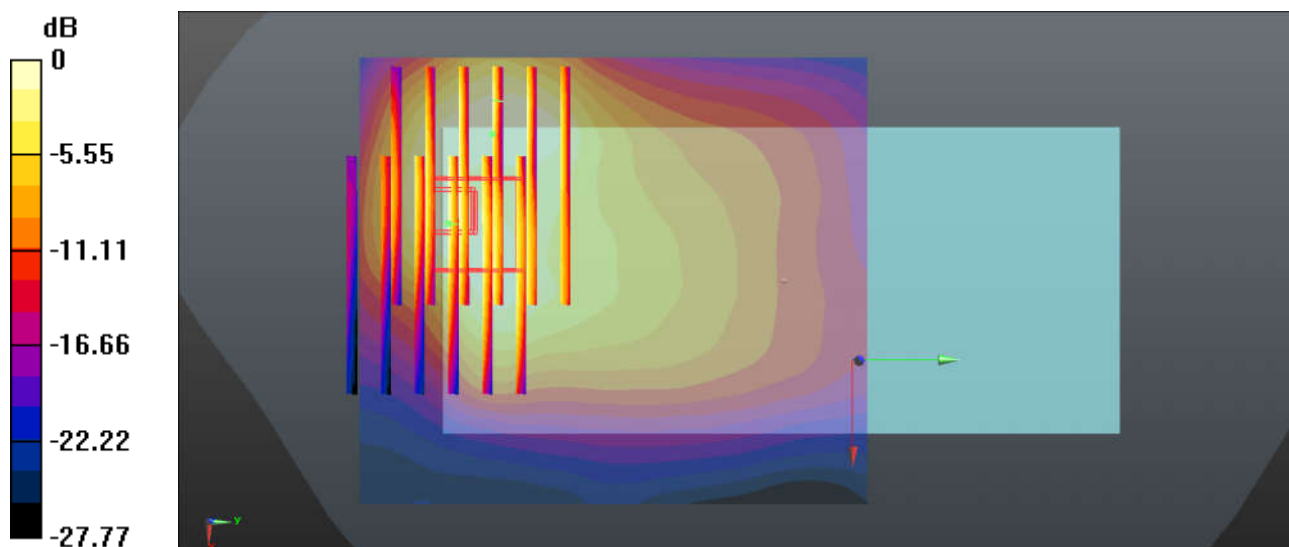
#### DASY5 Configuration:

- Probe: EX3DV4 - SN3843; ConvF(7.07, 7.07, 7.07); Calibrated: 2018.9.27
- Sensor-Surface: 1.4mm (Mechanical Surface Detection)
- Electronics: DAE4 Sn1338; Calibrated: 2018.12.3
- Phantom: SAM2; Type: SAM; Serial: TP:1754
- Measurement SW: DASY52, Version 52.10 (1); SEMCAD X Version 14.6.11 (7439)

**Ch512/Area Scan (71x81x1):** Interpolated grid: dx=1.500 mm, dy=1.500 mm  
Maximum value of SAR (interpolated) = 1.47 W/kg

**Ch512/Zoom Scan (8x6x7)/Cube 0:** Measurement grid: dx=8mm, dy=8mm, dz=5mm  
Reference Value = 9.667 V/m; Power Drift = 0.03 dB  
Peak SAR (extrapolated) = 1.94 W/kg  
**SAR(1 g) = 0.950 W/kg; SAR(10 g) = 0.538 W/kg**  
Maximum value of SAR (measured) = 1.53 W/kg

**Ch512/Zoom Scan (8x6x7)/Cube 1:** Measurement grid: dx=8mm, dy=8mm, dz=5mm  
Reference Value = 9.667 V/m; Power Drift = 0.03 dB  
Peak SAR (extrapolated) = 1.69 W/kg  
**SAR(1 g) = 0.944 W/kg; SAR(10 g) = 0.542 W/kg**  
Maximum value of SAR (measured) = 1.42 W/kg



0 dB = 1.42 W/kg = 1.52 dBW/kg

### 15\_WCDMA Band V\_RMC 12.2Kbps\_Back\_5mm\_Ch4233

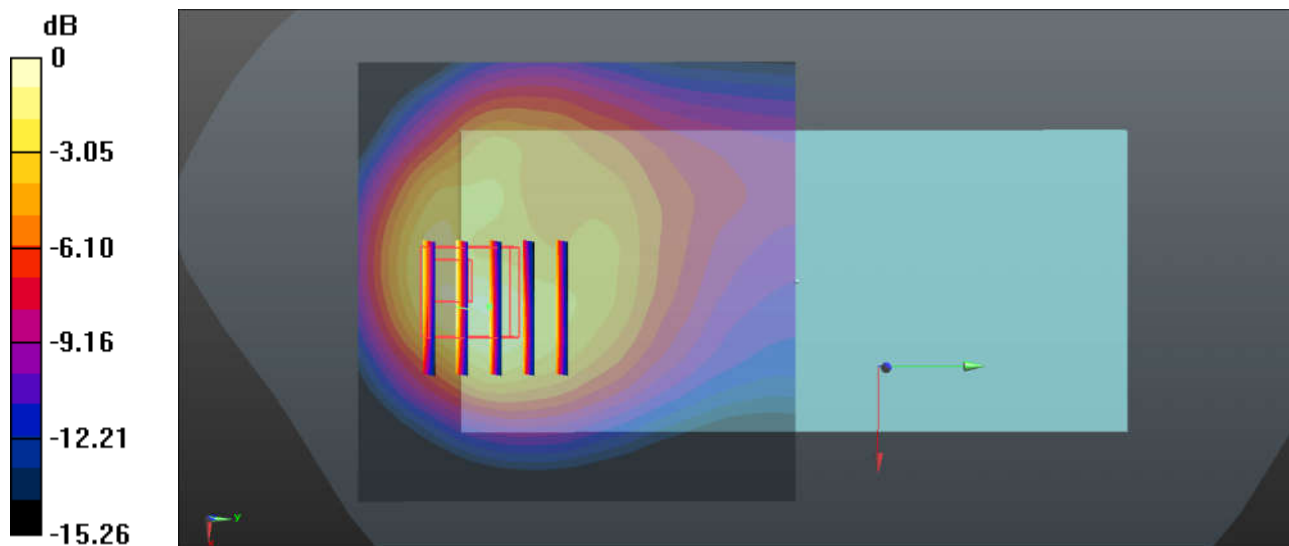
Communication System: UID 0, WCDMA (0); Frequency: 846.6 MHz; Duty Cycle: 1:1  
Medium: MSL\_835 Medium parameters used:  $f = 846.6$  MHz;  $\sigma = 1.01$  S/m;  $\epsilon_r = 54.533$ ;  $\rho = 1000$  kg/m<sup>3</sup>  
Ambient Temperature : 23.3 °C ; Liquid Temperature : 22.6 °C

#### DASY5 Configuration:

- Probe: EX3DV4 - SN3843; ConvF(9.03, 9.03, 9.03); Calibrated: 2018.9.27
- Sensor-Surface: 1.4mm (Mechanical Surface Detection)
- Electronics: DAE4 Sn1338; Calibrated: 2018.12.3
- Phantom: SAM2; Type: SAM; Serial: TP-1754
- Measurement SW: DASY52, Version 52.10 (1); SEMCAD X Version 14.6.11 (7439)

**Ch4233/Area Scan (71x71x1):** Interpolated grid: dx=1.500 mm, dy=1.500 mm  
Maximum value of SAR (interpolated) = 1.29 W/kg

**Ch4233/Zoom Scan (5x5x7)/Cube 0:** Measurement grid: dx=8mm, dy=8mm, dz=5mm  
Reference Value = 12.75 V/m; Power Drift = 0.07 dB  
Peak SAR (extrapolated) = 1.99 W/kg  
**SAR(1 g) = 1.02 W/kg; SAR(10 g) = 0.539 W/kg**  
Maximum value of SAR (measured) = 1.59 W/kg



0 dB = 1.59 W/kg = 2.01 dBW/kg

### 16\_WCDMA Band II\_RMC 12.2Kbps\_Back\_5mm\_Ch9262

Communication System: UID 0, WCDMA (0); Frequency: 1852.4 MHz; Duty Cycle: 1:1  
Medium: MSL\_1900 Medium parameters used:  $f = 1852.4$  MHz;  $\sigma = 1.496$  S/m;  $\epsilon_r = 52.869$ ;  $\rho = 1000$  kg/m<sup>3</sup>  
Ambient Temperature : 23.4 °C ; Liquid Temperature : 22.8 °C

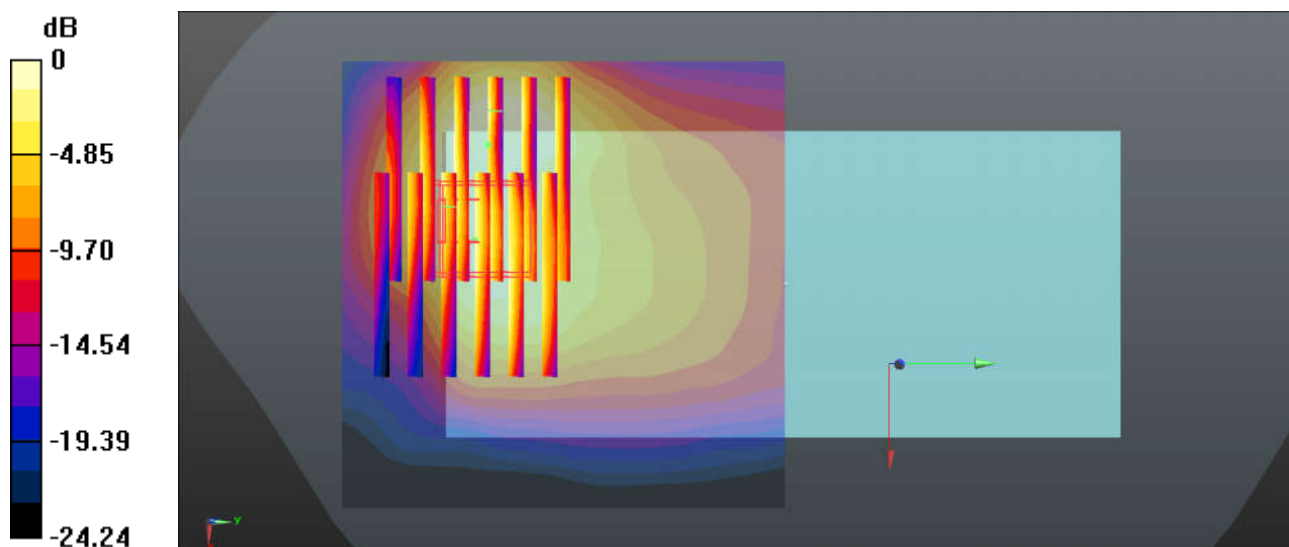
#### DASY5 Configuration:

- Probe: EX3DV4 - SN3843; ConvF(7.07, 7.07, 7.07); Calibrated: 2018.9.27
- Sensor-Surface: 1.4mm (Mechanical Surface Detection)
- Electronics: DAE4 Sn1338; Calibrated: 2018.12.3
- Phantom: SAM2; Type: SAM; Serial: TP-1754
- Measurement SW: DASY52, Version 52.10 (1); SEMCAD X Version 14.6.11 (7439)

**Ch9262/Area Scan (71x71x1):** Interpolated grid: dx=1.500 mm, dy=1.500 mm  
Maximum value of SAR (interpolated) = 1.68 W/kg

**Ch9262/Zoom Scan (7x6x7)/Cube 0:** Measurement grid: dx=8mm, dy=8mm, dz=5mm  
Reference Value = 2.039 V/m; Power Drift = 0.03 dB  
Peak SAR (extrapolated) = 1.88 W/kg  
**SAR(1 g) = 0.915 W/kg; SAR(10 g) = 0.532 W/kg**  
Maximum value of SAR (measured) = 1.52 W/kg

**Ch9262/Zoom Scan (7x6x7)/Cube 1:** Measurement grid: dx=8mm, dy=8mm, dz=5mm  
Reference Value = 2.039 V/m; Power Drift = 0.03 dB  
Peak SAR (extrapolated) = 1.59 W/kg  
**SAR(1 g) = 0.923 W/kg; SAR(10 g) = 0.541 W/kg**  
Maximum value of SAR (measured) = 1.29 W/kg



0 dB = 1.29 W/kg = 1.11 dBW/kg

**17\_LTE Band 5\_10M\_QPSK\_1\_49\_Back\_5mm\_Ch20525**

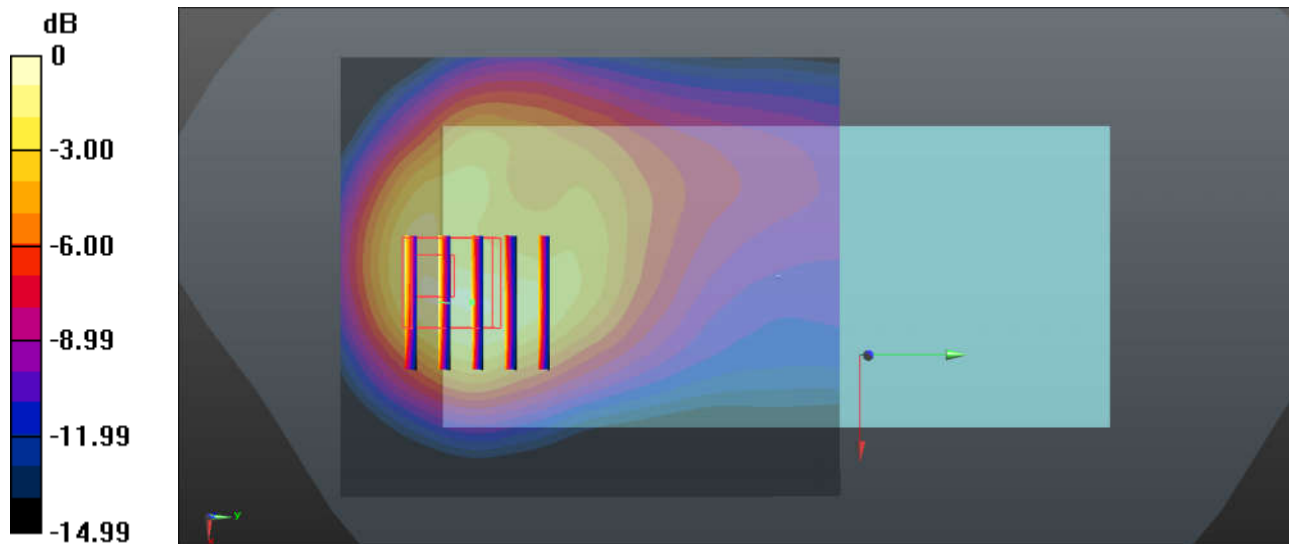
Communication System: UID 0, LTE-FDD (0); Frequency: 836.5 MHz; Duty Cycle: 1:1  
 Medium: MSL\_850 Medium parameters used:  $f = 836.5 \text{ MHz}$ ;  $\sigma = 0.999 \text{ S/m}$ ;  $\epsilon_r = 54.633$ ;  $\rho = 1000 \text{ kg/m}^3$   
 Ambient Temperature :  $23.3 \text{ }^\circ\text{C}$  ; Liquid Temperature :  $22.6 \text{ }^\circ\text{C}$

**DASY5 Configuration:**

- Probe: EX3DV4 - SN3843; ConvF(9.03, 9.03, 9.03); Calibrated: 2018.9.27
- Sensor-Surface: 1.4mm (Mechanical Surface Detection)
- Electronics: DAE4 Sn1338; Calibrated: 2018.12.3
- Phantom: SAM2; Type: SAM; Serial: TP-1754
- Measurement SW: DASY52, Version 52.10 (1); SEMCAD X Version 14.6.11 (7439)

**Ch20525/Area Scan (71x81x1):** Interpolated grid:  $dx=1.500 \text{ mm}$ ,  $dy=1.500 \text{ mm}$   
 Maximum value of SAR (interpolated) =  $1.10 \text{ W/kg}$

**Ch20525/Zoom Scan (5x5x7)/Cube 0:** Measurement grid:  $dx=8\text{mm}$ ,  $dy=8\text{mm}$ ,  $dz=5\text{mm}$   
 Reference Value =  $11.75 \text{ V/m}$ ; Power Drift =  $0.02 \text{ dB}$   
 Peak SAR (extrapolated) =  $1.66 \text{ W/kg}$   
**SAR(1 g) =  $0.862 \text{ W/kg}$ ; SAR(10 g) =  $0.464 \text{ W/kg}$**   
 Maximum value of SAR (measured) =  $1.34 \text{ W/kg}$



$0 \text{ dB} = 1.34 \text{ W/kg} = 1.27 \text{ dBW/kg}$

### 18\_LTE Band 7\_20M\_QPSK\_1RB\_0Offset\_Back\_5mm\_Ch21350

Communication System: UID 0, LTE-FDD (0); Frequency: 2560 MHz; Duty Cycle: 1:1  
Medium: MSL\_2600 Medium parameters used:  $f = 2560$  MHz;  $\sigma = 2.125$  S/m;  $\epsilon_r = 51.872$ ;  $\rho = 1000$  kg/m<sup>3</sup>  
Ambient Temperature : 23.3 °C ; Liquid Temperature : 22.7 °C

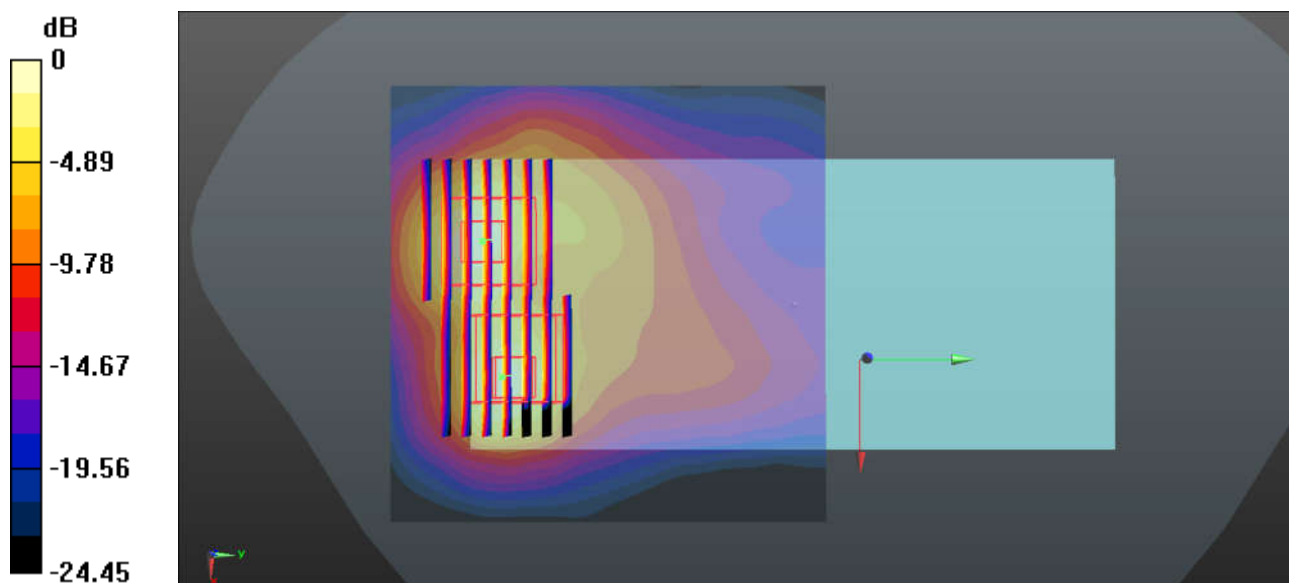
#### DASY5 Configuration:

- Probe: EX3DV4 - SN3843; ConvF(6.7, 6.7, 6.7); Calibrated: 2018.9.27
- Sensor-Surface: 1.4mm (Mechanical Surface Detection)
- Electronics: DAE4 Sn1338; Calibrated: 2018.12.3
- Phantom: SAM2; Type: SAM; Serial: TP-1754
- Measurement SW: DASY52, Version 52.10 (1); SEMCAD X Version 14.6.11 (7439)

**Ch21350/Area Scan (91x91x1):** Interpolated grid: dx=1.200 mm, dy=1.200 mm  
Maximum value of SAR (interpolated) = 1.83 W/kg

**Ch21350/Zoom Scan (8x7x7)/Cube 0:** Measurement grid: dx=5mm, dy=5mm, dz=5mm  
Reference Value = 5.916 V/m; Power Drift = 0.08 dB  
Peak SAR (extrapolated) = 3.61 W/kg  
**SAR(1 g) = 1.15 W/kg; SAR(10 g) = 0.473 W/kg**  
Maximum value of SAR (measured) = 1.82 W/kg

**Ch21350/Zoom Scan (8x7x7)/Cube 1:** Measurement grid: dx=5mm, dy=5mm, dz=5mm  
Reference Value = 5.916 V/m; Power Drift = 0.08 dB  
Peak SAR (extrapolated) = 2.69 W/kg  
**SAR(1 g) = 1.21 W/kg; SAR(10 g) = 0.550 W/kg**  
Maximum value of SAR (measured) = 2.12 W/kg



0 dB = 2.12 W/kg = 3.26 dBW/kg

**19\_LTE Band 41\_20M\_QPSK\_1\_0\_Back\_5mm\_Ch41140**

Communication System: UID 0, LTE-TDD (0); Frequency: 2645 MHz; Duty Cycle: 1:1.59  
 Medium: MSL\_2600 Medium parameters used:  $f = 2645$  MHz;  $\sigma = 2.243$  S/m;  $\epsilon_r = 51.571$ ;  $\rho = 1000$  kg/m<sup>3</sup>  
 Ambient Temperature : 23.3 °C ; Liquid Temperature : 22.7 °C

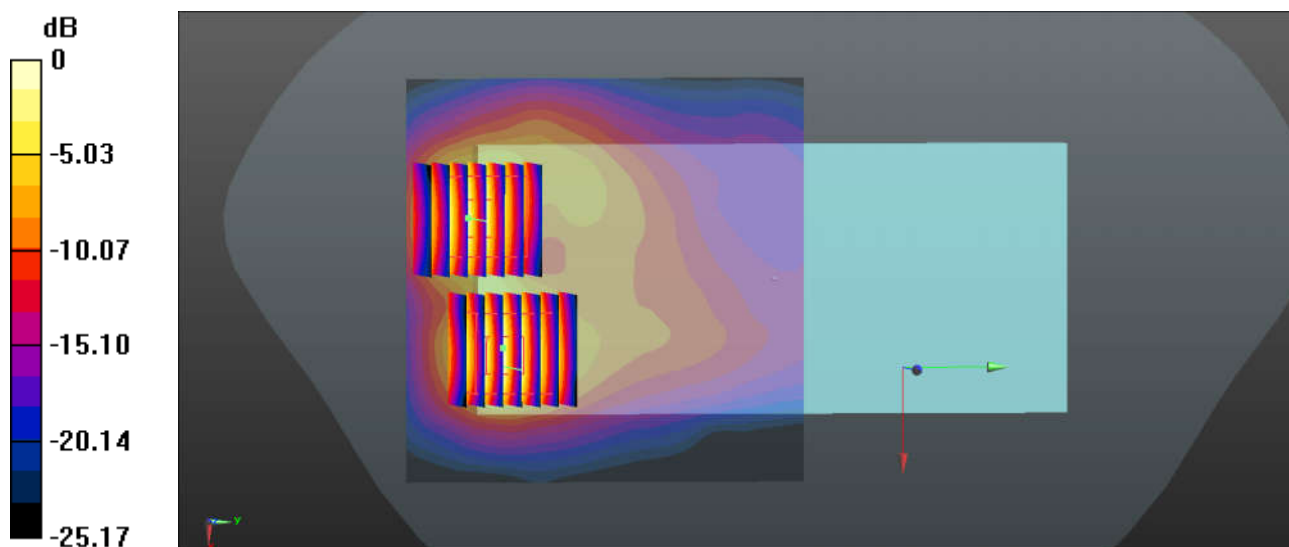
**DASY5 Configuration:**

- Probe: EX3DV4 - SN3857; ConvF(7.38, 7.38, 7.38); Calibrated: 2018.5.31
- Sensor-Surface: 1.4mm (Mechanical Surface Detection)
- Electronics: DAE4 Sn1358; Calibrated: 2018.4.19
- Phantom: SAM2; Type: SAM; Serial: TP:1754
- Measurement SW: DASY52, Version 52.10 (1); SEMCAD X Version 14.6.11 (7439)

**Ch41140/Area Scan (91x91x1):** Interpolated grid: dx=1.200 mm, dy=1.200 mm  
 Maximum value of SAR (interpolated) = 2.14 W/kg

**Ch41140/Zoom Scan (7x7x7)/Cube 0:** Measurement grid: dx=5mm, dy=5mm, dz=5mm  
 Reference Value = 5.233 V/m; Power Drift = -0.05 dB  
 Peak SAR (extrapolated) = 2.99 W/kg  
**SAR(1 g) = 1.19 W/kg; SAR(10 g) = 0.470 W/kg**  
 Maximum value of SAR (measured) = 2.12 W/kg

**Ch41140/Zoom Scan (7x7x7)/Cube 1:** Measurement grid: dx=5mm, dy=5mm, dz=5mm  
 Reference Value = 5.233 V/m; Power Drift = -0.05 dB  
 Peak SAR (extrapolated) = 2.37 W/kg  
**SAR(1 g) = 0.990 W/kg; SAR(10 g) = 0.406 W/kg**  
 Maximum value of SAR (measured) = 1.78 W/kg



0 dB = 1.78 W/kg = 2.50 dBW/kg

**20\_WLAN2.4GHz\_802.11b 1Mbps\_Back\_5mm\_Ch1**

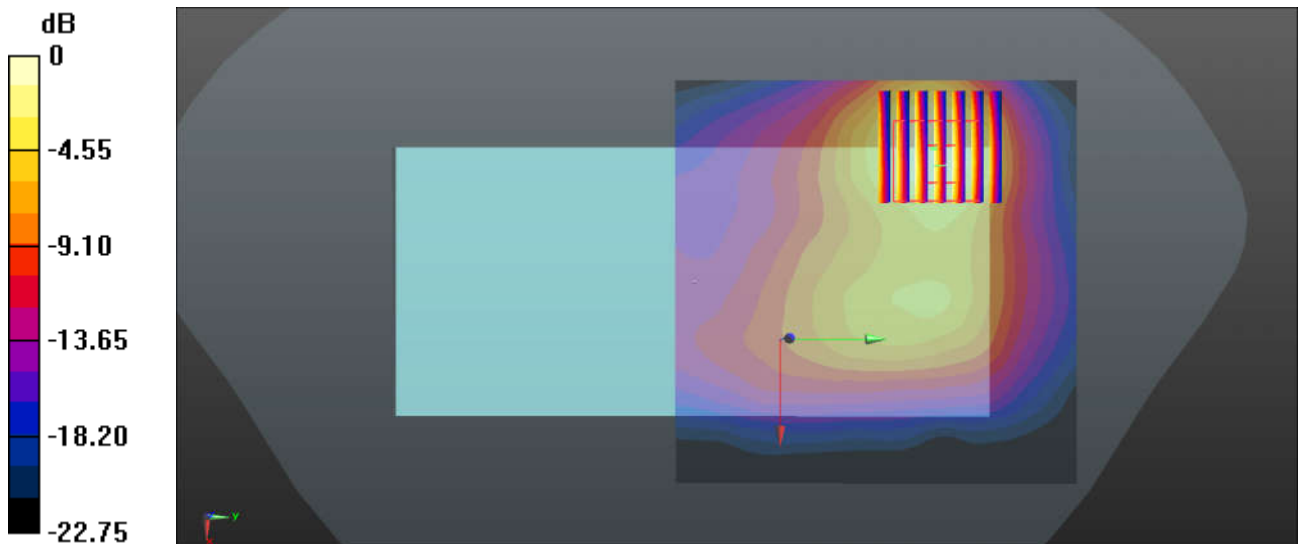
Communication System: UID 0, 802.11b (0); Frequency: 2412 MHz; Duty Cycle: 1:1  
 Medium: MSL\_2450 Medium parameters used:  $f = 2412$  MHz;  $\sigma = 1.954$  S/m;  $\epsilon_r = 53.33$ ;  $\rho = 1000$  kg/m<sup>3</sup>  
 Ambient Temperature : 23.2 °C ; Liquid Temperature : 22.6 °C

**DASY5 Configuration:**

- Probe: EX3DV4 - SN3843; ConvF(7.02, 7.02, 7.02); Calibrated: 2018.9.27
- Sensor-Surface: 1.4mm (Mechanical Surface Detection)
- Electronics: DAE4 Sn1338; Calibrated: 2018.12.3
- Phantom: SAM2; Type: SAM; Serial: TP-1754
- Measurement SW: DASY52, Version 52.10 (1); SEMCAD X Version 14.6.11 (7439)

**Ch1/Area Scan (91x91x1):** Interpolated grid: dx=1.200 mm, dy=1.200 mm  
 Maximum value of SAR (interpolated) = 0.771 W/kg

**Ch1/Zoom Scan (7x7x7)/Cube 0:** Measurement grid: dx=5mm, dy=5mm, dz=5mm  
 Reference Value = 2.370 V/m; Power Drift = 0.17 dB  
 Peak SAR (extrapolated) = 0.830 W/kg  
**SAR(1 g) = 0.444 W/kg; SAR(10 g) = 0.216 W/kg**  
 Maximum value of SAR (measured) = 0.697 W/kg



0 dB = 0.697 W/kg = -1.57 dBW/kg

## 21\_Bluetooth\_1Mbps\_Back\_5mm\_Ch39

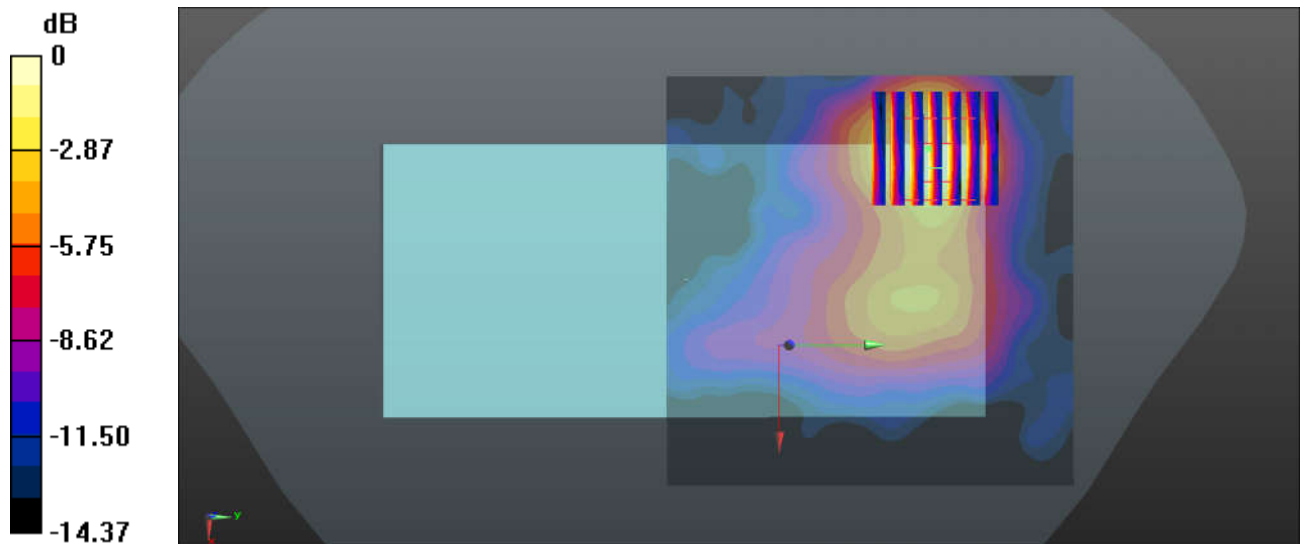
Communication System: UID 0, Bluetooth (0); Frequency: 2441 MHz; Duty Cycle: 1:1.3  
 Medium: MSL\_2450 Medium parameters used:  $f = 2441$  MHz;  $\sigma = 1.994$  S/m;  $\epsilon_r = 53.217$ ;  $\rho = 1000$  kg/m<sup>3</sup>  
 Ambient Temperature : 23.2 °C ; Liquid Temperature : 22.6 °C

### DASY5 Configuration:

- Probe: EX3DV4 - SN3843; ConvF(7.02, 7.02, 7.02); Calibrated: 2018.9.27
- Sensor-Surface: 1.4mm (Mechanical Surface Detection)
- Electronics: DAE4 Sn1338; Calibrated: 2018.12.3
- Phantom: SAM2; Type: SAM; Serial: TP-1754
- Measurement SW: DASY52, Version 52.10 (1); SEMCAD X Version 14.6.11 (7439)

**Ch39/Area Scan (91x91x1):** Interpolated grid: dx=1.200 mm, dy=1.200 mm  
 Maximum value of SAR (interpolated) = 0.0612 W/kg

**Ch39/Zoom Scan (7x7x7)/Cube 0:** Measurement grid: dx=5mm, dy=5mm, dz=5mm  
 Reference Value = 0.5770 V/m; Power Drift = 0.03 dB  
 Peak SAR (extrapolated) = 0.0680 W/kg  
**SAR(1 g) = 0.037 W/kg; SAR(10 g) = 0.019 W/kg**  
 Maximum value of SAR (measured) = 0.0562 W/kg



0 dB = 0.0562 W/kg = -12.50 dBW/kg

### 22\_WLAN5.2GHz\_802.11a 6Mbps\_Back\_5mm\_Ch36

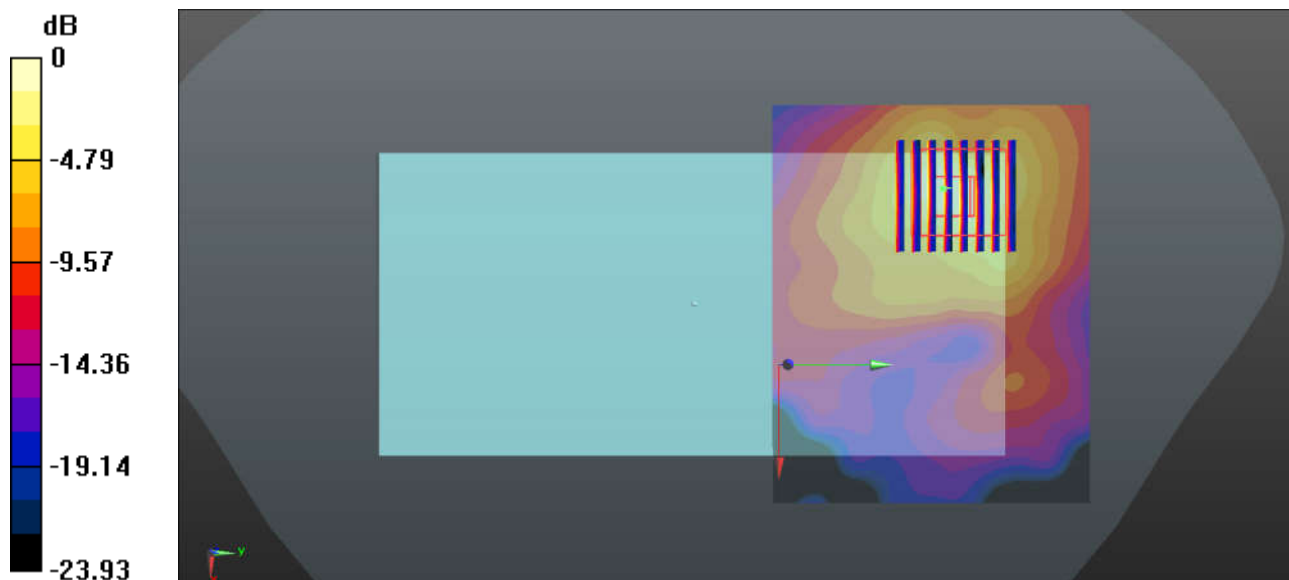
Communication System: UID 0, WIFI (0); Frequency: 5180 MHz; Duty Cycle: 1:1.051  
Medium: MSL\_5000 Medium parameters used:  $f = 5180$  MHz;  $\sigma = 5.374$  S/m;  $\epsilon_r = 47.78$ ;  $\rho = 1000$  kg/m<sup>3</sup>  
Ambient Temperature : 23.4 °C ; Liquid Temperature : 22.9 °C

#### DASY5 Configuration:

- Probe: EX3DV4 - SN3857; ConvF(4.4, 4.4, 4.4); Calibrated: 2018.5.31
- Sensor-Surface: 1.4mm (Mechanical Surface Detection)
- Electronics: DAE4 Sn1279; Calibrated: 2018.10.22
- Phantom: SAM2; Type: SAM; Serial: TP-1754
- Measurement SW: DASY52, Version 52.10 (1); SEMCAD X Version 14.6.11 (7439)

**Ch36/Area Scan (101x81x1):** Interpolated grid: dx=1.000 mm, dy=1.000 mm  
Maximum value of SAR (interpolated) = 0.780 W/kg

**Ch36/Zoom Scan (8x8x7)/Cube 0:** Measurement grid: dx=4mm, dy=4mm, dz=1.4mm  
Reference Value = 6.939 V/m; Power Drift = 0.01 dB  
Peak SAR (extrapolated) = 1.38 W/kg  
**SAR(1 g) = 0.348 W/kg; SAR(10 g) = 0.117 W/kg**  
Maximum value of SAR (measured) = 0.820 W/kg



0 dB = 0.820 W/kg = -0.86 dBW/kg

### 23\_WLAN5.8GHz\_802.11a 6Mbps\_Back\_5mm\_Ch165

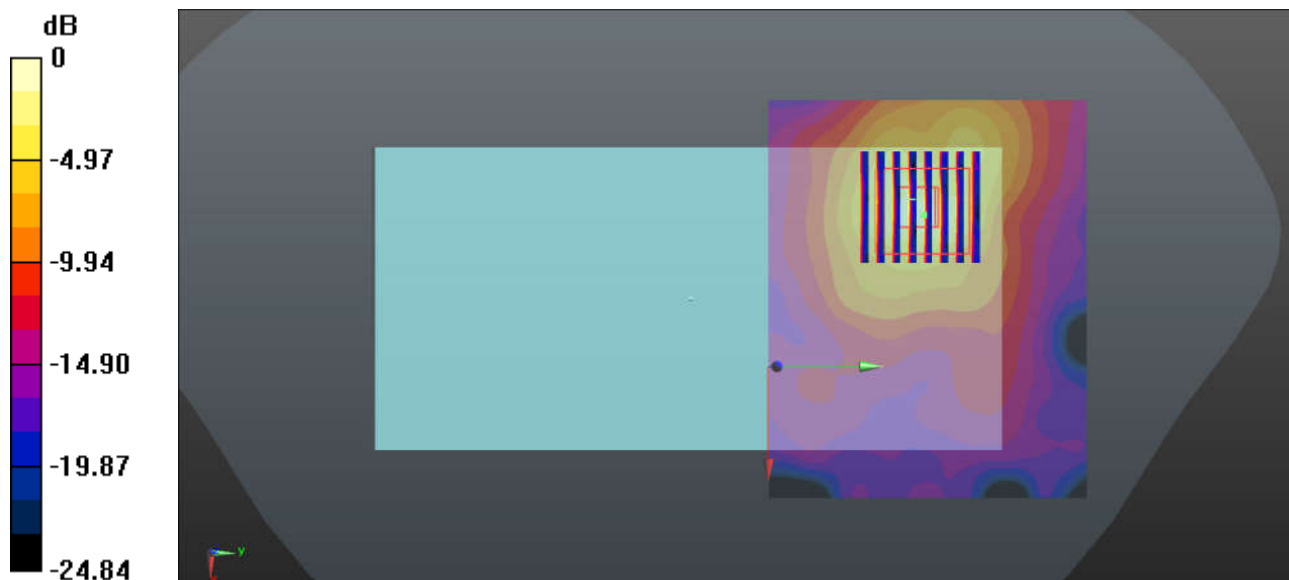
Communication System: UID 0, WIFI (0); Frequency: 5825 MHz; Duty Cycle: 1:1.051  
Medium: MSL\_5000 Medium parameters used:  $f = 5825$  MHz;  $\sigma = 6.228$  S/m;  $\epsilon_r = 46.741$ ;  $\rho = 1000$  kg/m<sup>3</sup>  
Ambient Temperature : 23.5 °C ; Liquid Temperature : 22.8 °C

#### DASY5 Configuration:

- Probe: EX3DV4 - SN3857; ConvF(4.31, 4.31, 4.31); Calibrated: 2018.5.31
- Sensor-Surface: 1.4mm (Mechanical Surface Detection)
- Electronics: DAE4 Sn1279; Calibrated: 2018.10.22
- Phantom: SAM2; Type: SAM; Serial: TP-1754
- Measurement SW: DASY52, Version 52.10 (1); SEMCAD X Version 14.6.11 (7439)

**Ch165/Area Scan (101x81x1):** Interpolated grid: dx=1.000 mm, dy=1.000 mm  
Maximum value of SAR (interpolated) = 0.959 W/kg

**Ch165/Zoom Scan (8x8x7)/Cube 0:** Measurement grid: dx=4mm, dy=4mm, dz=1.4mm  
Reference Value = 11.46 V/m; Power Drift = 0.01 dB  
Peak SAR (extrapolated) = 2.06 W/kg  
**SAR(1 g) = 0.408 W/kg; SAR(10 g) = 0.127 W/kg**  
Maximum value of SAR (measured) = 1.09 W/kg



0 dB = 1.09 W/kg = 0.37 dBW/kg

### 24\_GSM850\_GPRS (3 Tx slots)\_Back\_5mm\_Ch251

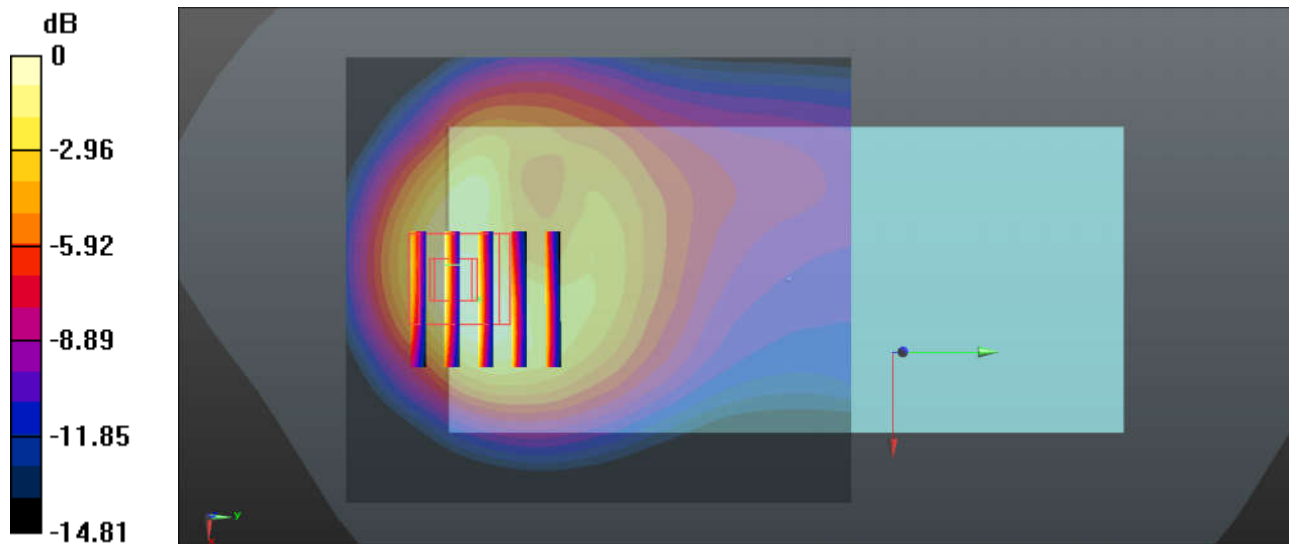
Communication System: UID 0, GSM850-3UP (0); Frequency: 848.8 MHz; Duty Cycle: 1:2.77  
Medium: MSL\_850 Medium parameters used:  $f = 848.8$  MHz;  $\sigma = 1.012$  S/m;  $\epsilon_r = 54.518$ ;  $\rho = 1000$  kg/m<sup>3</sup>  
Ambient Temperature : 23.3 °C ; Liquid Temperature : 22.6 °C

#### DASY5 Configuration:

- Probe: EX3DV4 - SN3843; ConvF(9.03, 9.03, 9.03); Calibrated: 2018.9.27
- Sensor-Surface: 1.4mm (Mechanical Surface Detection)
- Electronics: DAE4 Sn1338; Calibrated: 2018.12.3
- Phantom: SAM2; Type: SAM; Serial: TP-1754
- Measurement SW: DASY52, Version 52.10 (1); SEMCAD X Version 14.6.11 (7439)

**Ch251/Area Scan (71x81x1):** Interpolated grid: dx=1.500 mm, dy=1.500 mm  
Maximum value of SAR (interpolated) = 1.87 W/kg

**Ch251/Zoom Scan (5x5x7)/Cube 0:** Measurement grid: dx=8mm, dy=8mm, dz=5mm  
Reference Value = 12.49 V/m; Power Drift = -0.02 dB  
Peak SAR (extrapolated) = 2.32 W/kg  
**SAR(1 g) = 1.19 W/kg; SAR(10 g) = 0.660 W/kg**  
Maximum value of SAR (measured) = 1.75 W/kg



0 dB = 1.75 W/kg = 2.43 dBW/kg

### 25\_GSM1900\_GPRS 3 Tx slots\_Back\_5mm\_Ch512

Communication System: UID 0, PCS-3UP (0); Frequency: 1850.2 MHz; Duty Cycle: 1:2.77  
Medium: MSL\_1900 Medium parameters used:  $f = 1850.2$  MHz;  $\sigma = 1.493$  S/m;  $\epsilon_r = 52.88$ ;  $\rho = 1000$  kg/m<sup>3</sup>  
Ambient Temperature : 23.4 °C ; Liquid Temperature : 22.8 °C

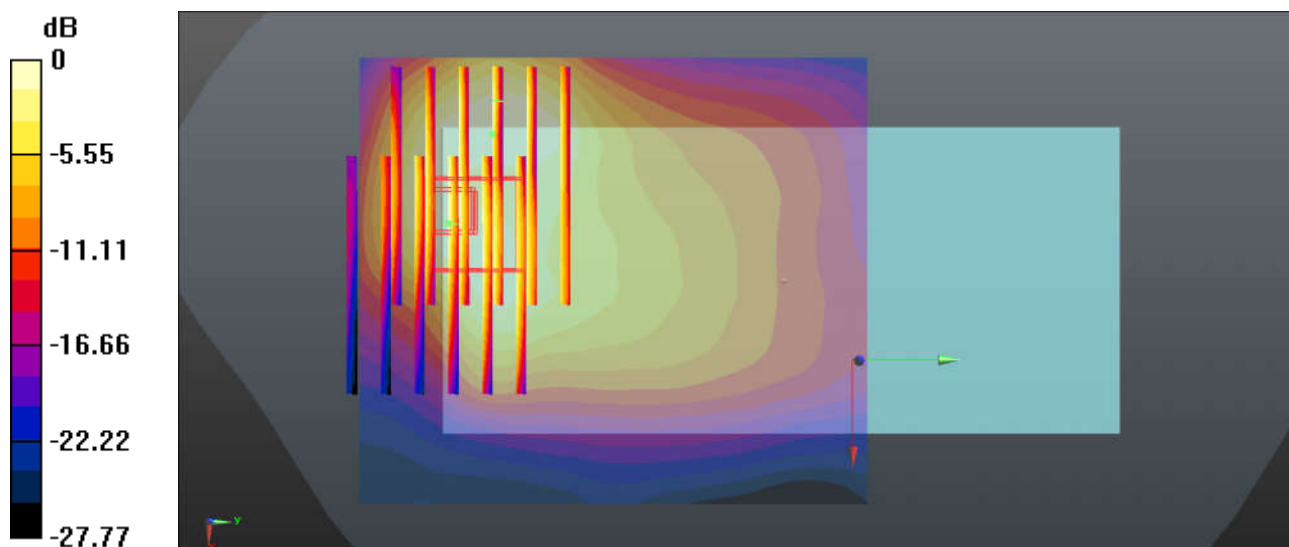
#### DASY5 Configuration:

- Probe: EX3DV4 - SN3843; ConvF(7.07, 7.07, 7.07); Calibrated: 2018.9.27
- Sensor-Surface: 1.4mm (Mechanical Surface Detection)
- Electronics: DAE4 Sn1338; Calibrated: 2018.12.3
- Phantom: SAM2; Type: SAM; Serial: TP:1754
- Measurement SW: DASY52, Version 52.10 (1); SEMCAD X Version 14.6.11 (7439)

**Ch512/Area Scan (71x81x1):** Interpolated grid: dx=1.500 mm, dy=1.500 mm  
Maximum value of SAR (interpolated) = 1.47 W/kg

**Ch512/Zoom Scan (8x6x7)/Cube 0:** Measurement grid: dx=8mm, dy=8mm, dz=5mm  
Reference Value = 9.667 V/m; Power Drift = 0.03 dB  
Peak SAR (extrapolated) = 1.94 W/kg  
**SAR(1 g) = 0.950 W/kg; SAR(10 g) = 0.538 W/kg**  
Maximum value of SAR (measured) = 1.53 W/kg

**Ch512/Zoom Scan (8x6x7)/Cube 1:** Measurement grid: dx=8mm, dy=8mm, dz=5mm  
Reference Value = 9.667 V/m; Power Drift = 0.03 dB  
Peak SAR (extrapolated) = 1.69 W/kg  
**SAR(1 g) = 0.944 W/kg; SAR(10 g) = 0.542 W/kg**  
Maximum value of SAR (measured) = 1.42 W/kg



0 dB = 1.42 W/kg = 1.52 dBW/kg

### 26\_WCDMA Band V\_RMC 12.2Kbps\_Back\_5mm\_Ch4233

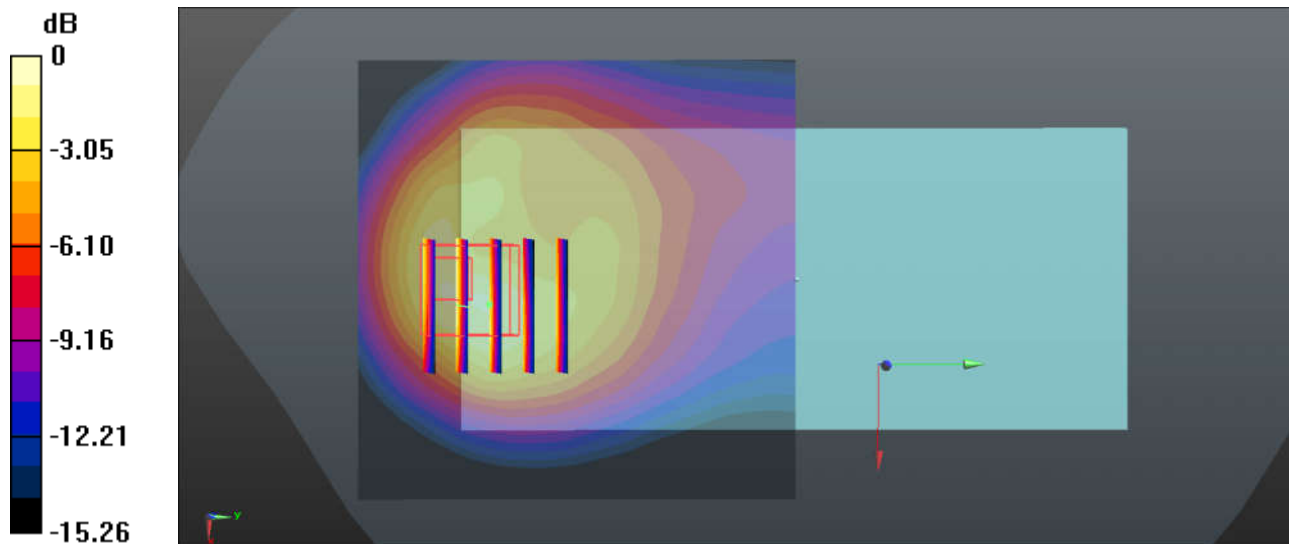
Communication System: UID 0, WCDMA (0); Frequency: 846.6 MHz; Duty Cycle: 1:1  
Medium: MSL\_835 Medium parameters used:  $f = 846.6 \text{ MHz}$ ;  $\sigma = 1.01 \text{ S/m}$ ;  $\epsilon_r = 54.533$ ;  $\rho = 1000 \text{ kg/m}^3$   
Ambient Temperature :  $23.3 \text{ }^\circ\text{C}$ ; Liquid Temperature :  $22.6 \text{ }^\circ\text{C}$

#### DASY5 Configuration:

- Probe: EX3DV4 - SN3843; ConvF(9.03, 9.03, 9.03); Calibrated: 2018.9.27
- Sensor-Surface: 1.4mm (Mechanical Surface Detection)
- Electronics: DAE4 Sn1338; Calibrated: 2018.12.3
- Phantom: SAM2; Type: SAM; Serial: TP-1754
- Measurement SW: DASY52, Version 52.10 (1); SEMCAD X Version 14.6.11 (7439)

**Ch4233/Area Scan (71x71x1):** Interpolated grid:  $dx=1.500 \text{ mm}$ ,  $dy=1.500 \text{ mm}$   
Maximum value of SAR (interpolated) =  $1.29 \text{ W/kg}$

**Ch4233/Zoom Scan (5x5x7)/Cube 0:** Measurement grid:  $dx=8\text{mm}$ ,  $dy=8\text{mm}$ ,  $dz=5\text{mm}$   
Reference Value =  $12.75 \text{ V/m}$ ; Power Drift =  $0.07 \text{ dB}$   
Peak SAR (extrapolated) =  $1.99 \text{ W/kg}$   
**SAR(1 g) =  $1.02 \text{ W/kg}$ ; SAR(10 g) =  $0.539 \text{ W/kg}$**   
Maximum value of SAR (measured) =  $1.59 \text{ W/kg}$



0 dB =  $1.59 \text{ W/kg} = 2.01 \text{ dBW/kg}$

### 27\_WCDMA Band II\_RMC 12.2Kbps\_Back\_5mm\_Ch9262

Communication System: UID 0, WCDMA (0); Frequency: 1852.4 MHz; Duty Cycle: 1:1  
Medium: MSL\_1900 Medium parameters used:  $f = 1852.4$  MHz;  $\sigma = 1.496$  S/m;  $\epsilon_r = 52.869$ ;  $\rho = 1000$  kg/m<sup>3</sup>  
Ambient Temperature : 23.4 °C ; Liquid Temperature : 22.8 °C

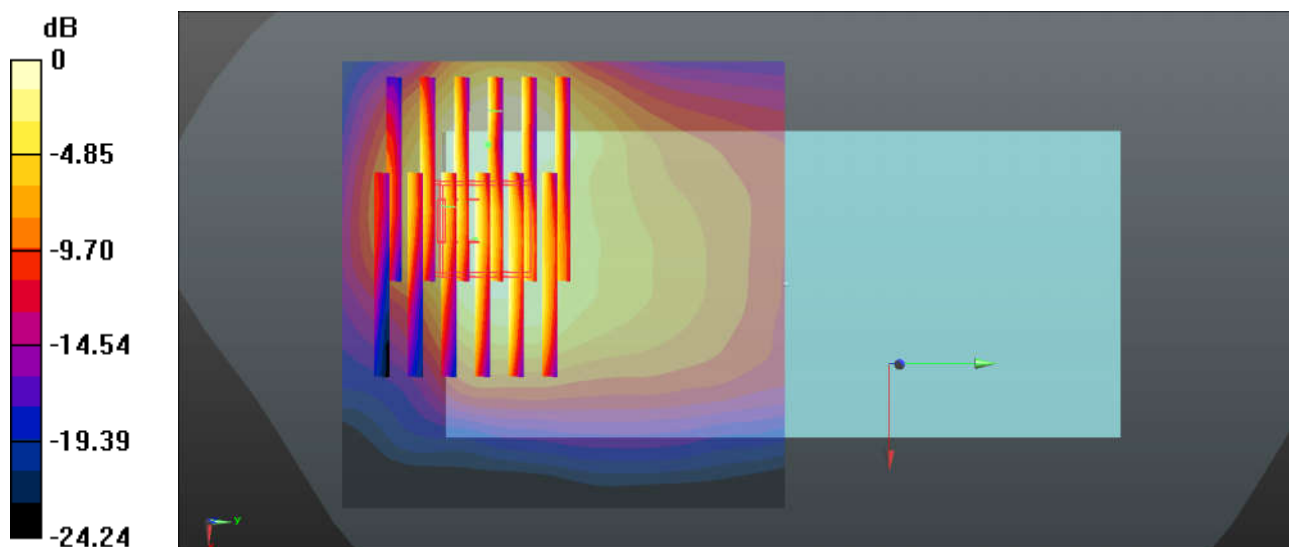
#### DASY5 Configuration:

- Probe: EX3DV4 - SN3843; ConvF(7.07, 7.07, 7.07); Calibrated: 2018.9.27
- Sensor-Surface: 1.4mm (Mechanical Surface Detection)
- Electronics: DAE4 Sn1338; Calibrated: 2018.12.3
- Phantom: SAM2; Type: SAM; Serial: TP-1754
- Measurement SW: DASY52, Version 52.10 (1); SEMCAD X Version 14.6.11 (7439)

**Ch9262/Area Scan (71x71x1):** Interpolated grid: dx=1.500 mm, dy=1.500 mm  
Maximum value of SAR (interpolated) = 1.68 W/kg

**Ch9262/Zoom Scan (7x6x7)/Cube 0:** Measurement grid: dx=8mm, dy=8mm, dz=5mm  
Reference Value = 2.039 V/m; Power Drift = 0.03 dB  
Peak SAR (extrapolated) = 1.88 W/kg  
**SAR(1 g) = 0.915 W/kg; SAR(10 g) = 0.532 W/kg**  
Maximum value of SAR (measured) = 1.52 W/kg

**Ch9262/Zoom Scan (7x6x7)/Cube 1:** Measurement grid: dx=8mm, dy=8mm, dz=5mm  
Reference Value = 2.039 V/m; Power Drift = 0.03 dB  
Peak SAR (extrapolated) = 1.59 W/kg  
**SAR(1 g) = 0.923 W/kg; SAR(10 g) = 0.541 W/kg**  
Maximum value of SAR (measured) = 1.29 W/kg



0 dB = 1.29 W/kg = 1.11 dBW/kg

### 28\_LTE Band 5\_10M\_QPSK\_1\_49\_Back\_5mm\_Ch20525

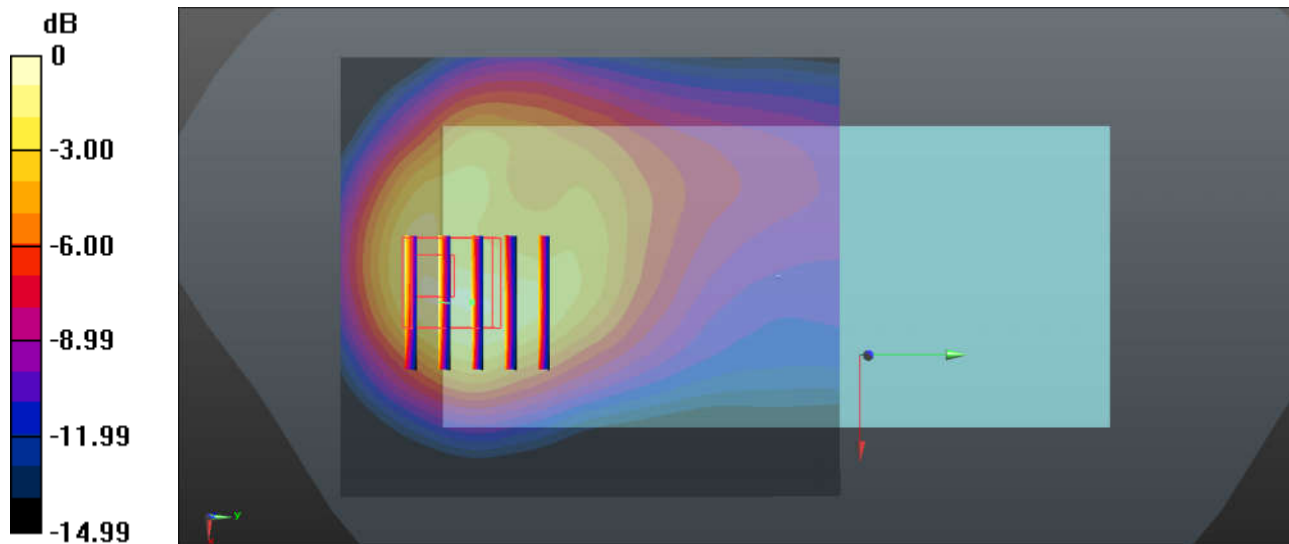
Communication System: UID 0, LTE-FDD (0); Frequency: 836.5 MHz; Duty Cycle: 1:1  
Medium: MSL\_850 Medium parameters used:  $f = 836.5$  MHz;  $\sigma = 0.999$  S/m;  $\epsilon_r = 54.633$ ;  $\rho = 1000$  kg/m<sup>3</sup>  
Ambient Temperature : 23.3 °C ; Liquid Temperature : 22.6 °C

#### DASY5 Configuration:

- Probe: EX3DV4 - SN3843; ConvF(9.03, 9.03, 9.03); Calibrated: 2018.9.27
- Sensor-Surface: 1.4mm (Mechanical Surface Detection)
- Electronics: DAE4 Sn1338; Calibrated: 2018.12.3
- Phantom: SAM2; Type: SAM; Serial: TP-1754
- Measurement SW: DASY52, Version 52.10 (1); SEMCAD X Version 14.6.11 (7439)

**Ch20525/Area Scan (71x81x1):** Interpolated grid: dx=1.500 mm, dy=1.500 mm  
Maximum value of SAR (interpolated) = 1.10 W/kg

**Ch20525/Zoom Scan (5x5x7)/Cube 0:** Measurement grid: dx=8mm, dy=8mm, dz=5mm  
Reference Value = 11.75 V/m; Power Drift = 0.02 dB  
Peak SAR (extrapolated) = 1.66 W/kg  
**SAR(1 g) = 0.862 W/kg; SAR(10 g) = 0.464 W/kg**  
Maximum value of SAR (measured) = 1.34 W/kg



0 dB = 1.34 W/kg = 1.27 dBW/kg

### 29\_LTE Band 7\_20M\_QPSK\_1\_0\_Back\_5mm\_Ch21350\_Headset

Communication System: UID 0, LTE-FDD (0); Frequency: 2560 MHz; Duty Cycle: 1:1  
Medium: MSL\_2600 Medium parameters used:  $f = 2560$  MHz;  $\sigma = 2.125$  S/m;  $\epsilon_r = 51.872$ ;  $\rho = 1000$  kg/m<sup>3</sup>  
Ambient Temperature : 23.3 °C ; Liquid Temperature : 22.7 °C

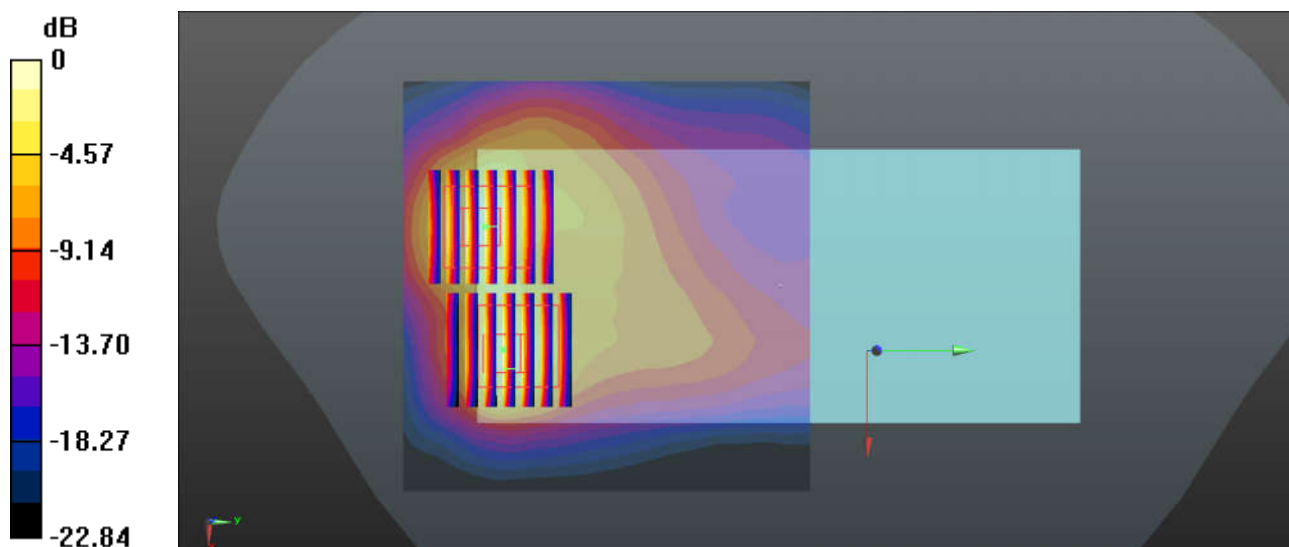
#### DASY5 Configuration:

- Probe: EX3DV4 - SN3843; ConvF(6.7, 6.7, 6.7); Calibrated: 2018.9.27
- Sensor-Surface: 1.4mm (Mechanical Surface Detection)
- Electronics: DAE4 Sn1338; Calibrated: 2018.12.3
- Phantom: SAM2; Type: SAM; Serial: TP-1754
- Measurement SW: DASY52, Version 52.10 (1); SEMCAD X Version 14.6.11 (7439)

**Ch21350/Area Scan (91x91x1):** Interpolated grid: dx=1.200 mm, dy=1.200 mm  
Maximum value of SAR (interpolated) = 2.22 W/kg

**Ch21350/Zoom Scan (7x7x7)/Cube 0:** Measurement grid: dx=5mm, dy=5mm, dz=5mm  
Reference Value = 2.672 V/m; Power Drift = -0.03 dB  
Peak SAR (extrapolated) = 2.86 W/kg  
**SAR(1 g) = 1.19 W/kg; SAR(10 g) = 0.511 W/kg**  
Maximum value of SAR (measured) = 2.10 W/kg

**Ch21350/Zoom Scan (7x7x7)/Cube 1:** Measurement grid: dx=5mm, dy=5mm, dz=5mm  
Reference Value = 2.672 V/m; Power Drift = -0.03 dB  
Peak SAR (extrapolated) = 2.94 W/kg  
**SAR(1 g) = 1.25 W/kg; SAR(10 g) = 0.597 W/kg**  
Maximum value of SAR (measured) = 2.25 W/kg



0 dB = 2.25 W/kg = 3.52 dBW/kg