

## #01\_HAC\_E\_GSM850\_GSM Voice\_Ch128

Communication System: GSM-FDD (TDMA, GMSK); Frequency: 824.2 MHz; Duty Cycle: 1:8.6896

Medium: Air Medium parameters used:  $\sigma = 0$  S/m,  $\epsilon_r = 1$ ;  $\rho = 0$  kg/m<sup>3</sup>

Ambient Temperature : 23.8 °C

DASY5 Configuration:

- Probe: ER3DV6 - SN2358; ConvF(1, 1, 1); Calibrated: 2018/1/19;
- Sensor-Surface: (Fix Surface)
- Electronics: DAE4 Sn910; Calibrated: 2018/6/21
- Phantom: HAC Test Arch with AMCC; Type: SD HAC P01 BA;
- Measurement SW: DASY52, Version 52.10 (0); SEMCAD X Version 14.6.10 (7417)

### E Scan - ER3D: 15 mm from Probe Center to the Device/Hearing Aid Compatibility Test

**(101x101x1):** Interpolated grid: dx=0.5000 mm, dy=0.5000 mm

Device Reference Point: 0, 0, -6.3 mm

Reference Value = 34.44 V/m; Power Drift = -0.03 dB

Applied MIF = 3.63 dB

RF audio interference level = 32.50 dBV/m

**Emission category: M4**

MIF scaled E-field

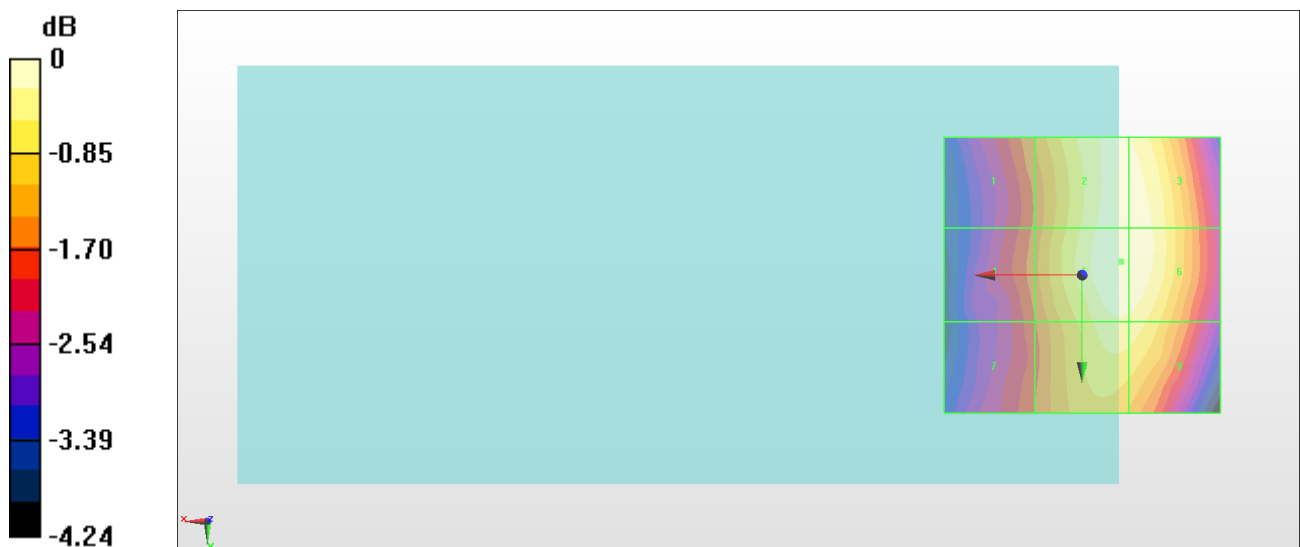
Grid 1 <b>M4</b> <b>31.13 dBV/m</b>	Grid 2 <b>M4</b> <b>32.45 dBV/m</b>	Grid 3 <b>M4</b> <b>32.45 dBV/m</b>
Grid 4 <b>M4</b> <b>31.01 dBV/m</b>	Grid 5 <b>M4</b> <b>32.5 dBV/m</b>	Grid 6 <b>M4</b> <b>32.49 dBV/m</b>
Grid 7 <b>M4</b> <b>30.81 dBV/m</b>	Grid 8 <b>M4</b> <b>32.18 dBV/m</b>	Grid 9 <b>M4</b> <b>32.14 dBV/m</b>

**Cursor:**

Total = 32.50 dBV/m

E Category: M4

Location: -7, -2.5, 8.7 mm



0 dB = 42.15 V/m = 32.50 dBV/m

## #02\_HAC\_E\_GSM850\_GSM Voice\_Ch189

Communication System: GSM-FDD (TDMA, GMSK); Frequency: 836.4 MHz; Duty Cycle: 1:8.6896

Medium: Air Medium parameters used:  $\sigma = 0$  S/m,  $\epsilon_r = 1$ ;  $\rho = 0$  kg/m<sup>3</sup>

Ambient Temperature : 23.8 °C

DASY5 Configuration:

- Probe: ER3DV6 - SN2358; ConvF(1, 1, 1); Calibrated: 2018/1/19;
- Sensor-Surface: (Fix Surface)
- Electronics: DAE4 Sn910; Calibrated: 2018/6/21
- Phantom: HAC Test Arch with AMCC; Type: SD HAC P01 BA;
- Measurement SW: DASY52, Version 52.10 (0); SEMCAD X Version 14.6.10 (7417)

### E Scan - ER3D: 15 mm from Probe Center to the Device/Hearing Aid Compatibility Test

**(101x101x1):** Interpolated grid: dx=0.5000 mm, dy=0.5000 mm

Device Reference Point: 0, 0, -6.3 mm

Reference Value = 34.46 V/m; Power Drift = 0.05 dB

Applied MIF = 3.63 dB

RF audio interference level = 32.32 dBV/m

**Emission category: M4**

MIF scaled E-field

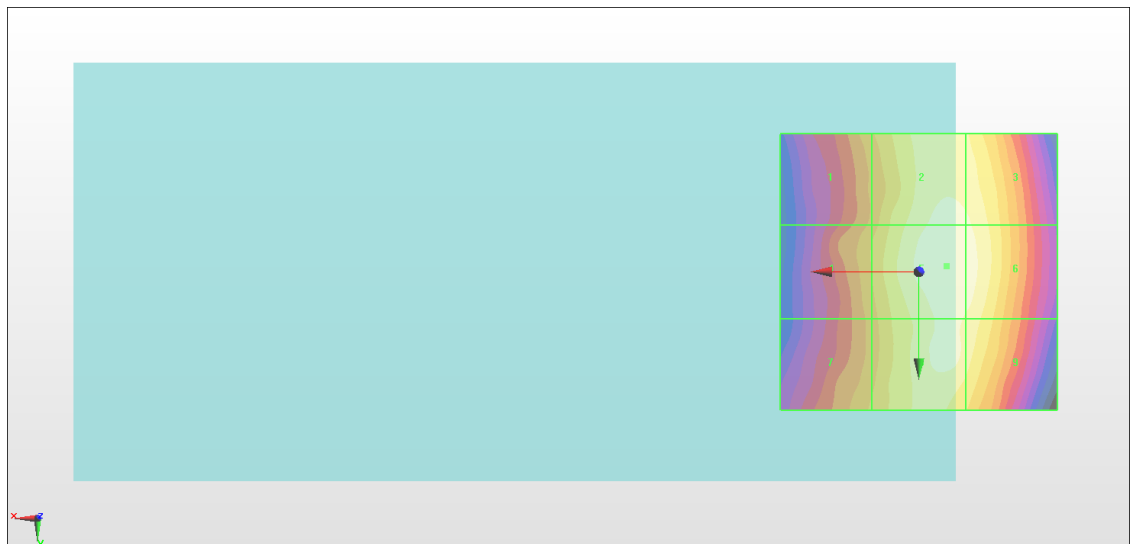
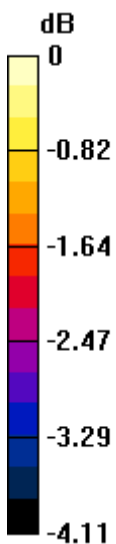
Grid 1 <b>M4</b> <b>31.2 dBV/m</b>	Grid 2 <b>M4</b> <b>32.18 dBV/m</b>	Grid 3 <b>M4</b> <b>32.1 dBV/m</b>
Grid 4 <b>M4</b> <b>31.26 dBV/m</b>	Grid 5 <b>M4</b> <b>32.32 dBV/m</b>	Grid 6 <b>M4</b> <b>32.22 dBV/m</b>
Grid 7 <b>M4</b> <b>31.28 dBV/m</b>	Grid 8 <b>M4</b> <b>32.29 dBV/m</b>	Grid 9 <b>M4</b> <b>32.01 dBV/m</b>

**Cursor:**

Total = 32.32 dBV/m

E Category: M4

Location: -5, -1, 8.7 mm



0 dB = 41.29 V/m = 32.32 dBV/m

### #03\_HAC\_E\_GSM850\_GSM Voice\_Ch251

Communication System: GSM-FDD (TDMA, GMSK); Frequency: 848.8 MHz; Duty Cycle: 1:8.6896

Medium: Air Medium parameters used:  $\sigma = 0$  S/m,  $\epsilon_r = 1$ ;  $\rho = 0$  kg/m<sup>3</sup>

Ambient Temperature : 23.8 °C

DASY5 Configuration:

- Probe: ER3DV6 - SN2358; ConvF(1, 1, 1); Calibrated: 2018/1/19;
- Sensor-Surface: (Fix Surface)
- Electronics: DAE4 Sn910; Calibrated: 2018/6/21
- Phantom: HAC Test Arch with AMCC; Type: SD HAC P01 BA;
- Measurement SW: DASY52, Version 52.10 (0); SEMCAD X Version 14.6.10 (7417)

### E Scan - ER3D: 15 mm from Probe Center to the Device/Hearing Aid Compatibility Test

**(101x101x1):** Interpolated grid: dx=0.5000 mm, dy=0.5000 mm

Device Reference Point: 0, 0, -6.3 mm

Reference Value = 34.29 V/m; Power Drift = -0.01 dB

Applied MIF = 3.63 dB

RF audio interference level = 32.24 dBV/m

**Emission category: M4**

MIF scaled E-field

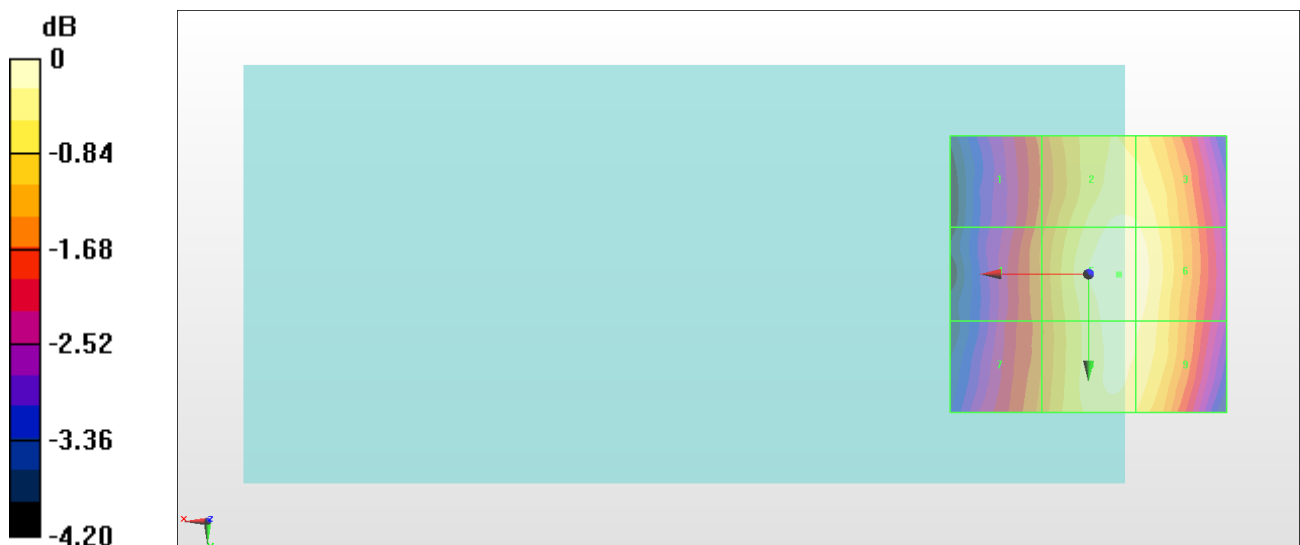
Grid 1 <b>M4</b> <b>30.74 dBV/m</b>	Grid 2 <b>M4</b> <b>32.03 dBV/m</b>	Grid 3 <b>M4</b> <b>32 dBV/m</b>
Grid 4 <b>M4</b> <b>30.89 dBV/m</b>	Grid 5 <b>M4</b> <b>32.24 dBV/m</b>	Grid 6 <b>M4</b> <b>32.15 dBV/m</b>
Grid 7 <b>M4</b> <b>30.95 dBV/m</b>	Grid 8 <b>M4</b> <b>32.09 dBV/m</b>	Grid 9 <b>M4</b> <b>32.02 dBV/m</b>

**Cursor:**

Total = 32.24 dBV/m

E Category: M4

Location: -5.5, 0, 8.7 mm



0 dB = 40.91 V/m = 32.24 dBV/m

## #04\_HAC\_E\_GSM1900\_GSM Voice\_Ch512

Communication System: GSM-FDD (TDMA, GMSK); Frequency: 1850.2 MHz; Duty Cycle: 1:8.6896

Medium: Air Medium parameters used:  $\sigma = 0$  S/m,  $\epsilon_r = 1$ ;  $\rho = 0$  kg/m<sup>3</sup>

Ambient Temperature : 23.8 °C

DASY5 Configuration:

- Probe: ER3DV6 - SN2358; ConvF(1, 1, 1); Calibrated: 2018/1/19;
- Sensor-Surface: (Fix Surface)
- Electronics: DAE4 Sn910; Calibrated: 2018/6/21
- Phantom: HAC Test Arch with AMCC; Type: SD HAC P01 BA;
- Measurement SW: DASY52, Version 52.10 (0); SEMCAD X Version 14.6.10 (7417)

### E Scan - ER3D: 15 mm from Probe Center to the Device/Hearing Aid Compatibility Test

**(101x101x1):** Interpolated grid: dx=0.5000 mm, dy=0.5000 mm

Device Reference Point: 0, 0, -6.3 mm

Reference Value = 7.027 V/m; Power Drift = 0.15 dB

Applied MIF = 3.63 dB

RF audio interference level = 24.62 dBV/m

**Emission category: M4**

MIF scaled E-field

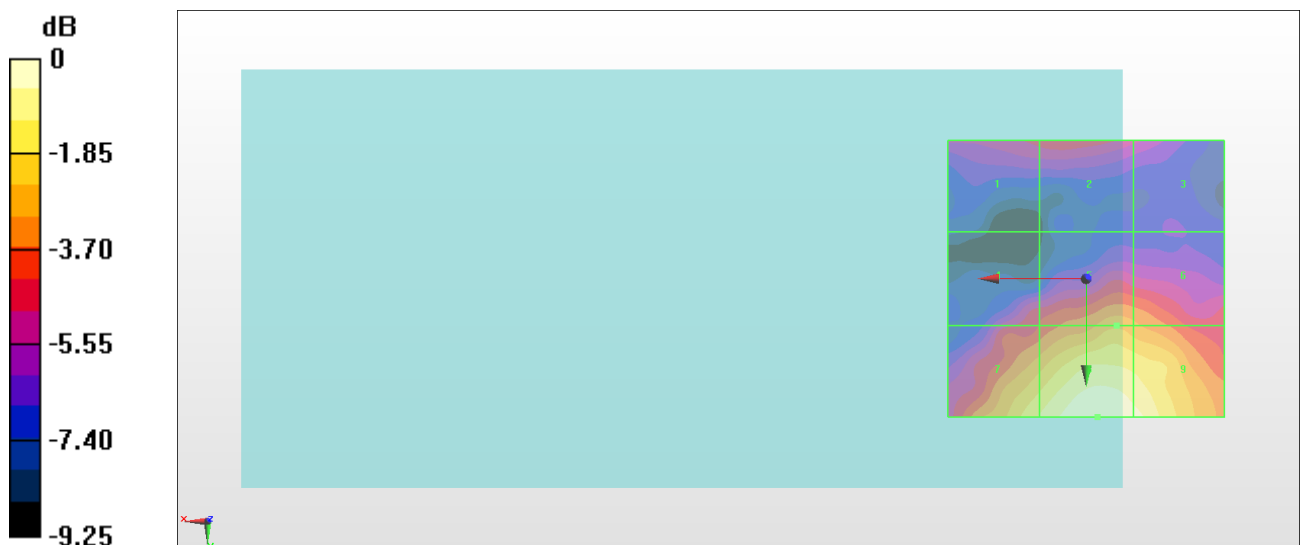
Grid 1 <b>M4</b> <b>19.94 dBV/m</b>	Grid 2 <b>M4</b> <b>20.24 dBV/m</b>	Grid 3 <b>M4</b> <b>19.34 dBV/m</b>
Grid 4 <b>M4</b> <b>20.38 dBV/m</b>	Grid 5 <b>M4</b> <b>22.03 dBV/m</b>	Grid 6 <b>M4</b> <b>21.74 dBV/m</b>
Grid 7 <b>M4</b> <b>23.46 dBV/m</b>	Grid 8 <b>M4</b> <b>24.62 dBV/m</b>	Grid 9 <b>M4</b> <b>24.27 dBV/m</b>

**Cursor:**

Total = 24.62 dBV/m

E Category: M4

Location: -2, 25, 8.7 mm



0 dB = 17.03 V/m = 24.62 dBV/m

### #05\_HAC\_E\_GSM1900\_GSM Voice\_Ch661

Communication System: GSM-FDD (TDMA, GMSK); Frequency: 1880 MHz; Duty Cycle: 1:8.6896

Medium: Air Medium parameters used:  $\sigma = 0$  S/m,  $\epsilon_r = 1$ ;  $\rho = 0$  kg/m<sup>3</sup>

Ambient Temperature : 23.8 °C

DASY5 Configuration:

- Probe: ER3DV6 - SN2358; ConvF(1, 1, 1); Calibrated: 2018/1/19;
- Sensor-Surface: (Fix Surface)
- Electronics: DAE4 Sn910; Calibrated: 2018/6/21
- Phantom: HAC Test Arch with AMCC; Type: SD HAC P01 BA;
- Measurement SW: DASY52, Version 52.10 (0); SEMCAD X Version 14.6.10 (7417)

### E Scan - ER3D: 15 mm from Probe Center to the Device/Hearing Aid Compatibility Test

**(101x101x1):** Interpolated grid: dx=0.5000 mm, dy=0.5000 mm

Device Reference Point: 0, 0, -6.3 mm

Reference Value = 7.345 V/m; Power Drift = -0.00 dB

Applied MIF = 3.63 dB

RF audio interference level = 24.62 dBV/m

**Emission category: M4**

MIF scaled E-field

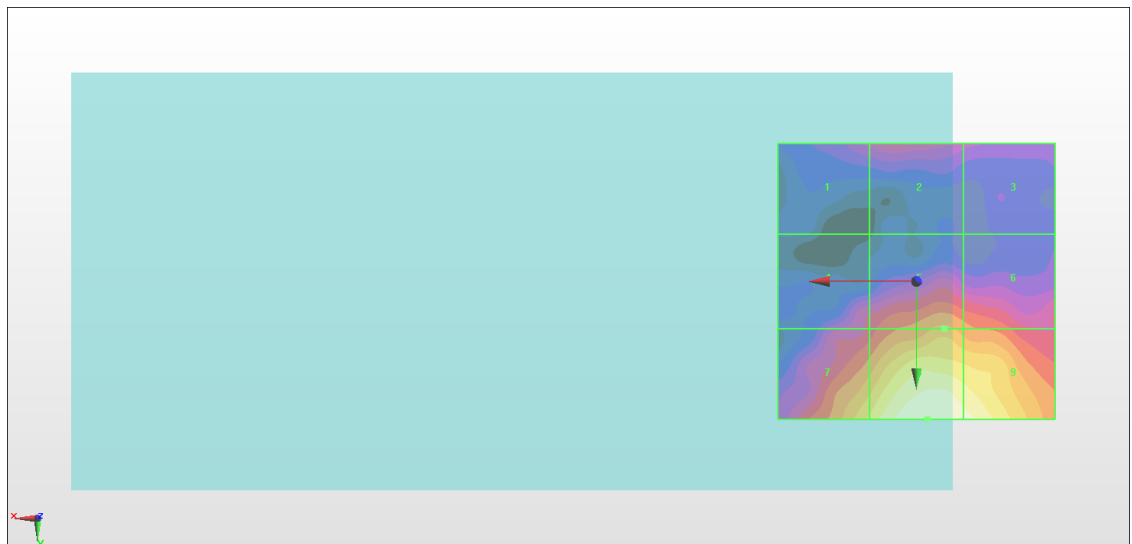
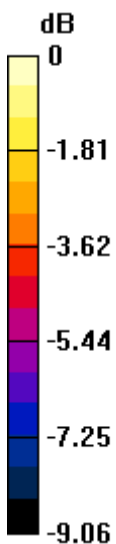
Grid 1 <b>M4</b> <b>19.44 dBV/m</b>	Grid 2 <b>M4</b> <b>19.95 dBV/m</b>	Grid 3 <b>M4</b> <b>18.95 dBV/m</b>
Grid 4 <b>M4</b> <b>20.05 dBV/m</b>	Grid 5 <b>M4</b> <b>21.77 dBV/m</b>	Grid 6 <b>M4</b> <b>21.28 dBV/m</b>
Grid 7 <b>M4</b> <b>22.95 dBV/m</b>	Grid 8 <b>M4</b> <b>24.62 dBV/m</b>	Grid 9 <b>M4</b> <b>24.28 dBV/m</b>

**Cursor:**

Total = 24.62 dBV/m

E Category: M4

Location: -2, 25, 8.7 mm



0 dB = 17.02 V/m = 24.62 dBV/m

## #06\_HAC\_E\_GSM1900\_GSM Voice\_Ch810

Communication System: GSM-FDD (TDMA, GMSK); Frequency: 1909.8 MHz; Duty Cycle: 1:8.6896

Medium: Air Medium parameters used:  $\sigma = 0$  S/m,  $\epsilon_r = 1$ ;  $\rho = 0$  kg/m<sup>3</sup>

Ambient Temperature : 23.8 °C

DASY5 Configuration:

- Probe: ER3DV6 - SN2358; ConvF(1, 1, 1); Calibrated: 2018/1/19;
- Sensor-Surface: (Fix Surface)
- Electronics: DAE4 Sn910; Calibrated: 2018/6/21
- Phantom: HAC Test Arch with AMCC; Type: SD HAC P01 BA;
- Measurement SW: DASY52, Version 52.10 (0); SEMCAD X Version 14.6.10 (7417)

### E Scan - ER3D: 15 mm from Probe Center to the Device/Hearing Aid Compatibility Test

**(101x101x1):** Interpolated grid: dx=0.5000 mm, dy=0.5000 mm

Device Reference Point: 0, 0, -6.3 mm

Reference Value = 7.390 V/m; Power Drift = 0.18 dB

Applied MIF = 3.63 dB

RF audio interference level = 24.69 dBV/m

**Emission category: M4**

MIF scaled E-field

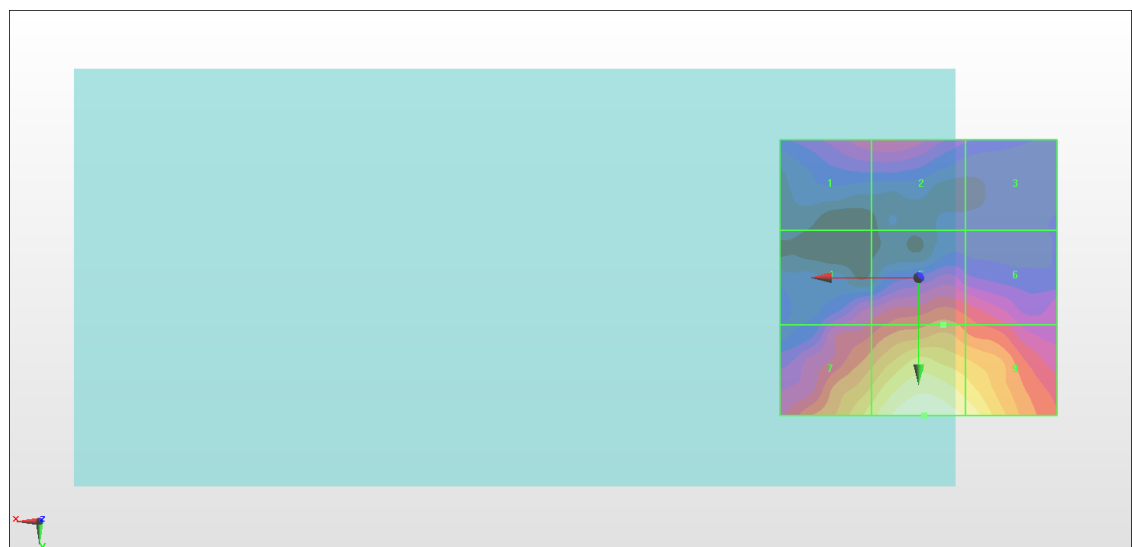
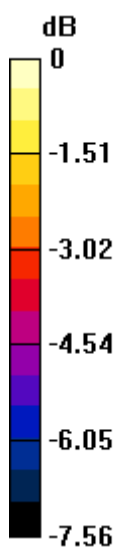
Grid 1 <b>M4</b> <b>20.62 dBV/m</b>	Grid 2 <b>M4</b> <b>20.76 dBV/m</b>	Grid 3 <b>M4</b> <b>19.3 dBV/m</b>
Grid 4 <b>M4</b> <b>20.83 dBV/m</b>	Grid 5 <b>M4</b> <b>21.85 dBV/m</b>	Grid 6 <b>M4</b> <b>21.46 dBV/m</b>
Grid 7 <b>M4</b> <b>23.49 dBV/m</b>	Grid 8 <b>M4</b> <b>24.69 dBV/m</b>	Grid 9 <b>M4</b> <b>24.13 dBV/m</b>

**Cursor:**

Total = 24.69 dBV/m

E Category: M4

Location: -1, 25, 8.7 mm



0 dB = 17.16 V/m = 24.69 dBV/m