

# #01\_HAC\_E\_GSM850\_GSM Voice\_Ch128

Communication System: GSM-FDD (TDMA, GMSK); Frequency: 824.2 MHz; Duty Cycle: 1:8.6896

Medium: Air Medium parameters used:  $\sigma = 0$  S/m,  $\epsilon_r = 1$ ;  $\rho = 0$  kg/m<sup>3</sup>

Ambient Temperature : 23.5 °C

DASY5 Configuration:

- Probe: EF3DV3 - SN4047; ConvF(1, 1, 1) @ 824.2 MHz; Calibrated: 2019/1/30
- Sensor-Surface: (Fix Surface)
- Electronics: DAE4 Sn854; Calibrated: 2018/6/14
- Phantom: HAC Test Arch with AMCC; Type: SD HAC P01 BA;
- Measurement SW: DASY52, Version 52.10 (1); SEMCAD X Version 14.6.11 (7439)

## E Scan - ER3D: 15 mm from Probe Center to the Device/Hearing Aid Compatibility Test (101x101x1): Interpolated grid: dx=0.5000 mm, dy=0.5000 mm

Device Reference Point: 0, 0, -6.3 mm

Reference Value = 71.71 V/m; Power Drift = -0.06 dB

Applied MIF = 3.63 dB

RF audio interference level = 38.53 dBV/m

**Emission category: M4**

MIF scaled E-field

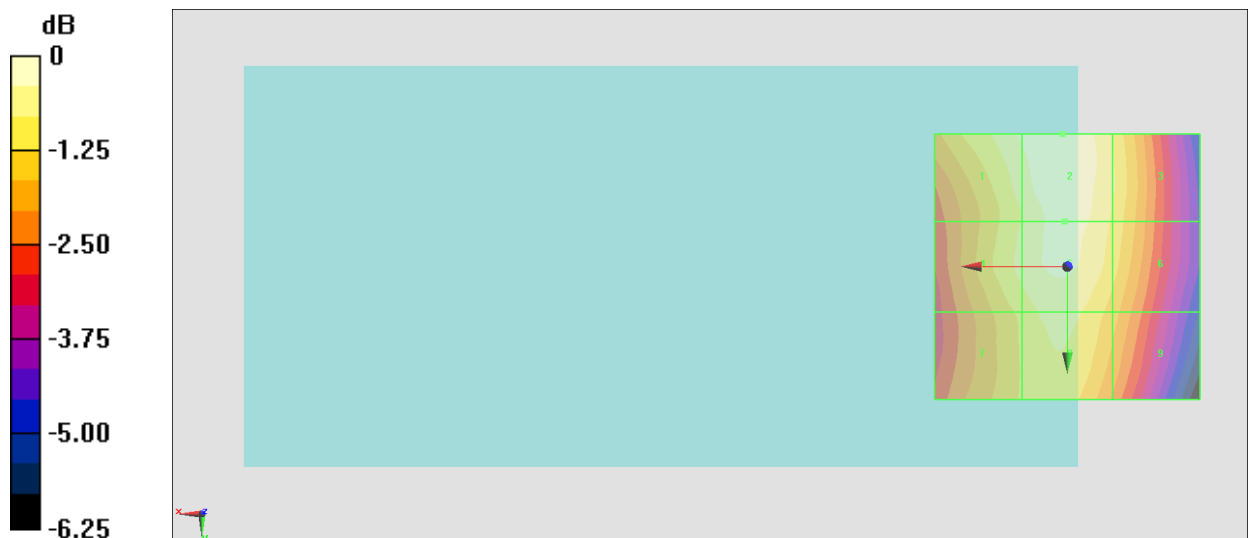
Grid 1 <b>M4</b> <b>38.19 dBV/m</b>	Grid 2 <b>M4</b> <b>38.53 dBV/m</b>	Grid 3 <b>M4</b> <b>37.76 dBV/m</b>
Grid 4 <b>M4</b> <b>37.85 dBV/m</b>	Grid 5 <b>M4</b> <b>38.25 dBV/m</b>	Grid 6 <b>M4</b> <b>37.62 dBV/m</b>
Grid 7 <b>M4</b> <b>37.44 dBV/m</b>	Grid 8 <b>M4</b> <b>37.85 dBV/m</b>	Grid 9 <b>M4</b> <b>37.08 dBV/m</b>

**Cursor:**

Total = 38.53 dBV/m

E Category: M4

Location: 1, -25, 7.7 mm



0 dB = 84.41 V/m = 38.53 dBV/m

## #02\_HAC\_E\_GSM850\_GSM Voice\_Ch189

Communication System: GSM-FDD (TDMA, GMSK); Frequency: 836.4 MHz; Duty Cycle: 1:8.6896

Medium: Air Medium parameters used:  $\sigma = 0$  S/m,  $\epsilon_r = 1$ ;  $\rho = 0$  kg/m<sup>3</sup>

Ambient Temperature : 23.5 °C

DASY5 Configuration:

- Probe: EF3DV3 - SN4047; ConvF(1, 1, 1) @ 836.4 MHz; Calibrated: 2019/1/30
- Sensor-Surface: (Fix Surface)
- Electronics: DAE4 Sn854; Calibrated: 2018/6/14
- Phantom: HAC Test Arch with AMCC; Type: SD HAC P01 BA;
- Measurement SW: DASY52, Version 52.10 (1); SEMCAD X Version 14.6.11 (7439)

### E Scan - ER3D: 15 mm from Probe Center to the Device/Hearing Aid Compatibility Test

**(101x101x1):** Interpolated grid: dx=0.5000 mm, dy=0.5000 mm

Device Reference Point: 0, 0, -6.3 mm

Reference Value = 62.67 V/m; Power Drift = 0.01 dB

Applied MIF = 3.63 dB

RF audio interference level = 37.67 dBV/m

**Emission category: M4**

MIF scaled E-field

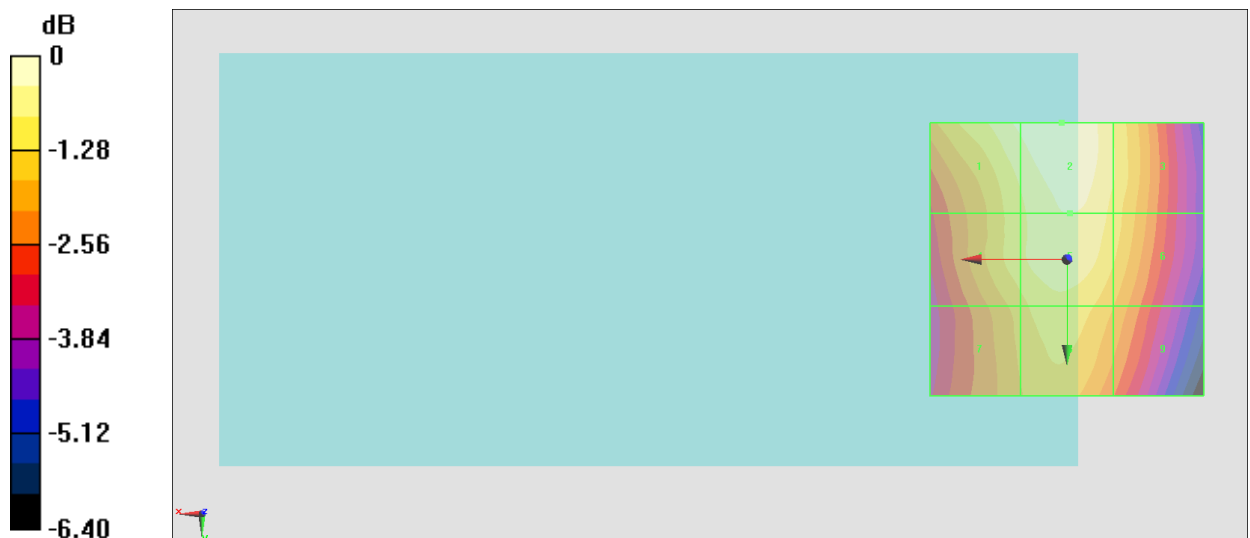
Grid 1 <b>M4</b> <b>37.35 dBV/m</b>	Grid 2 <b>M4</b> <b>37.67 dBV/m</b>	Grid 3 <b>M4</b> <b>36.86 dBV/m</b>
Grid 4 <b>M4</b> <b>36.74 dBV/m</b>	Grid 5 <b>M4</b> <b>37.25 dBV/m</b>	Grid 6 <b>M4</b> <b>36.65 dBV/m</b>
Grid 7 <b>M4</b> <b>36.22 dBV/m</b>	Grid 8 <b>M4</b> <b>36.71 dBV/m</b>	Grid 9 <b>M4</b> <b>35.98 dBV/m</b>

**Cursor:**

Total = 37.67 dBV/m

E Category: M4

Location: 1, -25, 7.7 mm



0 dB = 76.44 V/m = 37.67 dBV/m

### #03\_HAC\_E\_GSM850\_GSM Voice\_Ch251

Communication System: GSM-FDD (TDMA, GMSK); Frequency: 848.8 MHz; Duty Cycle: 1:8.6896

Medium: Air Medium parameters used:  $\sigma = 0$  S/m,  $\epsilon_r = 1$ ;  $\rho = 0$  kg/m<sup>3</sup>

Ambient Temperature : 23.5 °C

DASY5 Configuration:

- Probe: EF3DV3 - SN4047; ConvF(1, 1, 1) @ 848.8 MHz; Calibrated: 2019/1/30
- Sensor-Surface: (Fix Surface)
- Electronics: DAE4 Sn854; Calibrated: 2018/6/14
- Phantom: HAC Test Arch with AMCC; Type: SD HAC P01 BA;
- Measurement SW: DASY52, Version 52.10 (1); SEMCAD X Version 14.6.11 (7439)

### E Scan - ER3D: 15 mm from Probe Center to the Device/Hearing Aid Compatibility Test

**(101x101x1):** Interpolated grid: dx=0.5000 mm, dy=0.5000 mm

Device Reference Point: 0, 0, -6.3 mm

Reference Value = 56.78 V/m; Power Drift = -0.04 dB

Applied MIF = 3.63 dB

RF audio interference level = 36.80 dBV/m

**Emission category: M4**

MIF scaled E-field

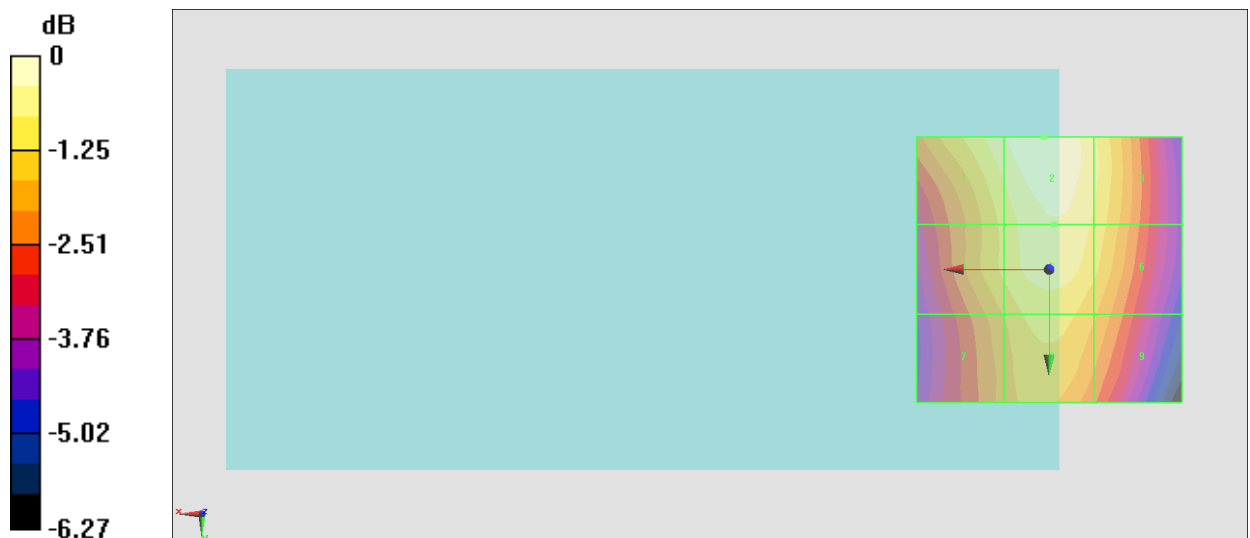
Grid 1 <b>M4</b> <b>36.35 dBV/m</b>	Grid 2 <b>M4</b> <b>36.8 dBV/m</b>	Grid 3 <b>M4</b> <b>36.12 dBV/m</b>
Grid 4 <b>M4</b> <b>35.69 dBV/m</b>	Grid 5 <b>M4</b> <b>36.35 dBV/m</b>	Grid 6 <b>M4</b> <b>35.89 dBV/m</b>
Grid 7 <b>M4</b> <b>35.16 dBV/m</b>	Grid 8 <b>M4</b> <b>35.77 dBV/m</b>	Grid 9 <b>M4</b> <b>35.2 dBV/m</b>

**Cursor:**

Total = 36.80 dBV/m

E Category: M4

Location: 1, -25, 7.7 mm



0 dB = 69.21 V/m = 36.80 dBV/m

### #04\_HAC\_E\_GSM1900\_GSM Voice\_Ch512

Communication System: GSM-FDD (TDMA, GMSK); Frequency: 1850.2 MHz; Duty Cycle: 1:8.6896

Medium: Air Medium parameters used:  $\sigma = 0$  S/m,  $\epsilon_r = 1$ ;  $\rho = 0$  kg/m<sup>3</sup>

Ambient Temperature : 23.5 °C

DASY5 Configuration:

- Probe: EF3DV3 - SN4047; ConvF(1, 1, 1) @ 1850.2 MHz; Calibrated: 2019/1/30
- Sensor-Surface: (Fix Surface)
- Electronics: DAE4 Sn854; Calibrated: 2018/6/14
- Phantom: HAC Test Arch with AMCC; Type: SD HAC P01 BA;
- Measurement SW: DASY52, Version 52.10 (1); SEMCAD X Version 14.6.11 (7439)

### E Scan - ER3D: 15 mm from Probe Center to the Device/Hearing Aid Compatibility Test (101x101x1): Interpolated grid: dx=0.5000 mm, dy=0.5000 mm

Device Reference Point: 0, 0, -6.3 mm

Reference Value = 7.347 V/m; Power Drift = 0.14 dB

Applied MIF = 3.63 dB

RF audio interference level = 27.68 dBV/m

**Emission category: M4**

MIF scaled E-field

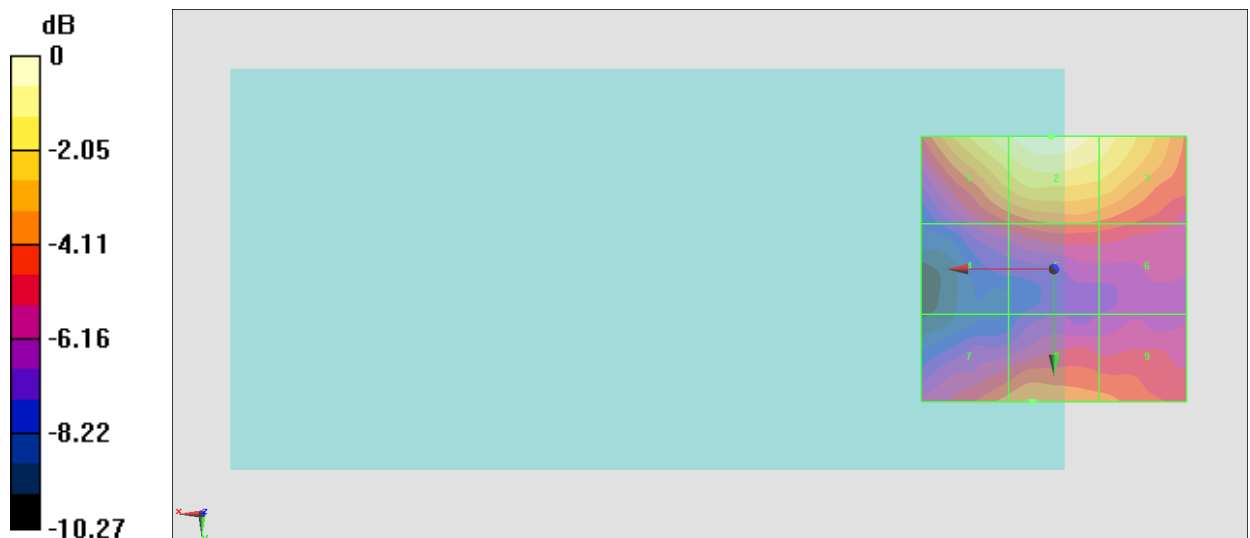
<b>Grid 1 M4</b> <b>26.92 dBV/m</b>	<b>Grid 2 M4</b> <b>27.68 dBV/m</b>	<b>Grid 3 M4</b> <b>26.78 dBV/m</b>
<b>Grid 4 M4</b> <b>22.78 dBV/m</b>	<b>Grid 5 M4</b> <b>23.64 dBV/m</b>	<b>Grid 6 M4</b> <b>23.39 dBV/m</b>
<b>Grid 7 M4</b> <b>23.96 dBV/m</b>	<b>Grid 8 M4</b> <b>24.39 dBV/m</b>	<b>Grid 9 M4</b> <b>23.9 dBV/m</b>

**Cursor:**

Total = 27.68 dBV/m

E Category: M4

Location: 0.5, -25, 7.7 mm



0 dB = 24.20 V/m = 27.68 dBV/m

### #05\_HAC\_E\_GSM1900\_GSM Voice\_Ch661

Communication System: GSM-FDD (TDMA, GMSK); Frequency: 1880 MHz; Duty Cycle: 1:8.6896

Medium: Air Medium parameters used:  $\sigma = 0$  S/m,  $\epsilon_r = 1$ ;  $\rho = 0$  kg/m<sup>3</sup>

Ambient Temperature : 23.5 °C

DASY5 Configuration:

- Probe: EF3DV3 - SN4047; ConvF(1, 1, 1) @ 1880 MHz; Calibrated: 2019/1/30
- Sensor-Surface: (Fix Surface)
- Electronics: DAE4 Sn854; Calibrated: 2018/6/14
- Phantom: HAC Test Arch with AMCC; Type: SD HAC P01 BA;
- Measurement SW: DASY52, Version 52.10 (1); SEMCAD X Version 14.6.11 (7439)

### E Scan - ER3D: 15 mm from Probe Center to the Device/Hearing Aid Compatibility Test

**(101x101x1):** Interpolated grid: dx=0.5000 mm, dy=0.5000 mm

Device Reference Point: 0, 0, -6.3 mm

Reference Value = 7.619 V/m; Power Drift = -0.13 dB

Applied MIF = 3.63 dB

RF audio interference level = 27.15 dBV/m

**Emission category: M4**

MIF scaled E-field

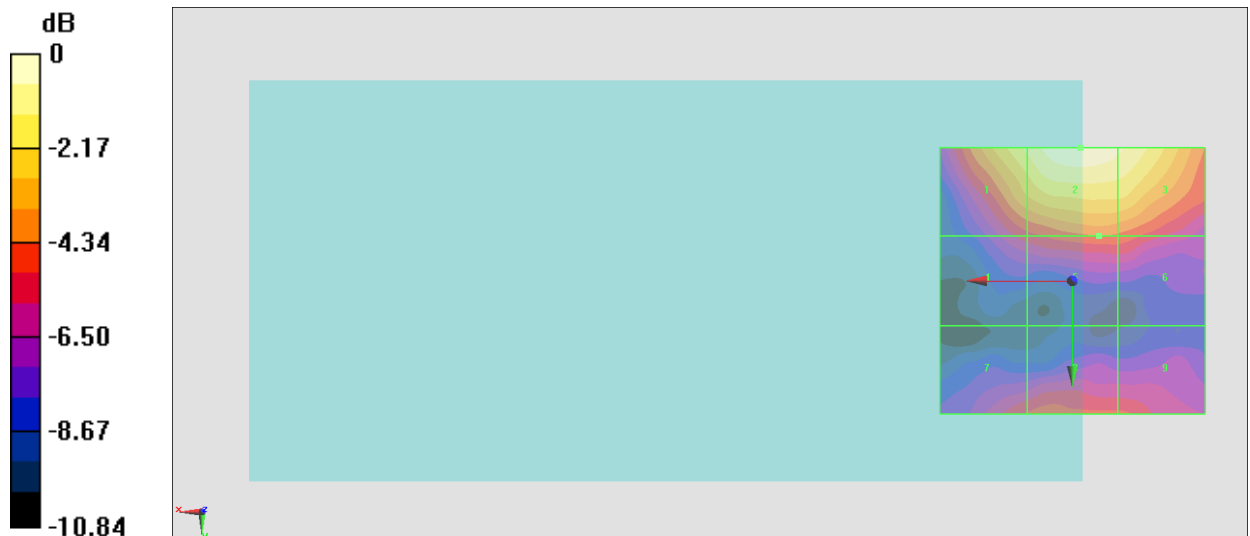
<b>Grid 1 M4</b> <b>25.93 dBV/m</b>	<b>Grid 2 M4</b> <b>27.15 dBV/m</b>	<b>Grid 3 M4</b> <b>26.59 dBV/m</b>
<b>Grid 4 M4</b> <b>21.84 dBV/m</b>	<b>Grid 5 M4</b> <b>22.83 dBV/m</b>	<b>Grid 6 M4</b> <b>22.71 dBV/m</b>
<b>Grid 7 M4</b> <b>22.2 dBV/m</b>	<b>Grid 8 M4</b> <b>22.43 dBV/m</b>	<b>Grid 9 M4</b> <b>22.32 dBV/m</b>

**Cursor:**

Total = 27.15 dBV/m

E Category: M4

Location: -1.5, -25, 7.7 mm



0 dB = 22.79 V/m = 27.15 dBV/m

### #06\_HAC\_E\_GSM1900\_GSM Voice\_Ch810

Communication System: GSM-FDD (TDMA, GMSK); Frequency: 1909.8 MHz; Duty Cycle: 1:8.6896  
 Medium: Air Medium parameters used:  $\sigma = 0$  S/m,  $\epsilon_r = 1$ ;  $\rho = 0$  kg/m<sup>3</sup>  
 Ambient Temperature : 23.5 °C

**DASY5 Configuration:**

- Probe: EF3DV3 - SN4047; ConvF(1, 1, 1) @ 1909.8 MHz; Calibrated: 2019/1/30
- Sensor-Surface: (Fix Surface)
- Electronics: DAE4 Sn854; Calibrated: 2018/6/14
- Phantom: HAC Test Arch with AMCC; Type: SD HAC P01 BA;
- Measurement SW: DASY52, Version 52.10 (1); SEMCAD X Version 14.6.11 (7439)

**E Scan - ER3D: 15 mm from Probe Center to the Device/Hearing Aid Compatibility Test (101x101x1):** Interpolated grid: dx=0.5000 mm, dy=0.5000 mm

Device Reference Point: 0, 0, -6.3 mm

Reference Value = 8.357 V/m; Power Drift = -0.16 dB

Applied MIF = 3.63 dB

RF audio interference level = 26.95 dBV/m

**Emission category: M4**

MIF scaled E-field

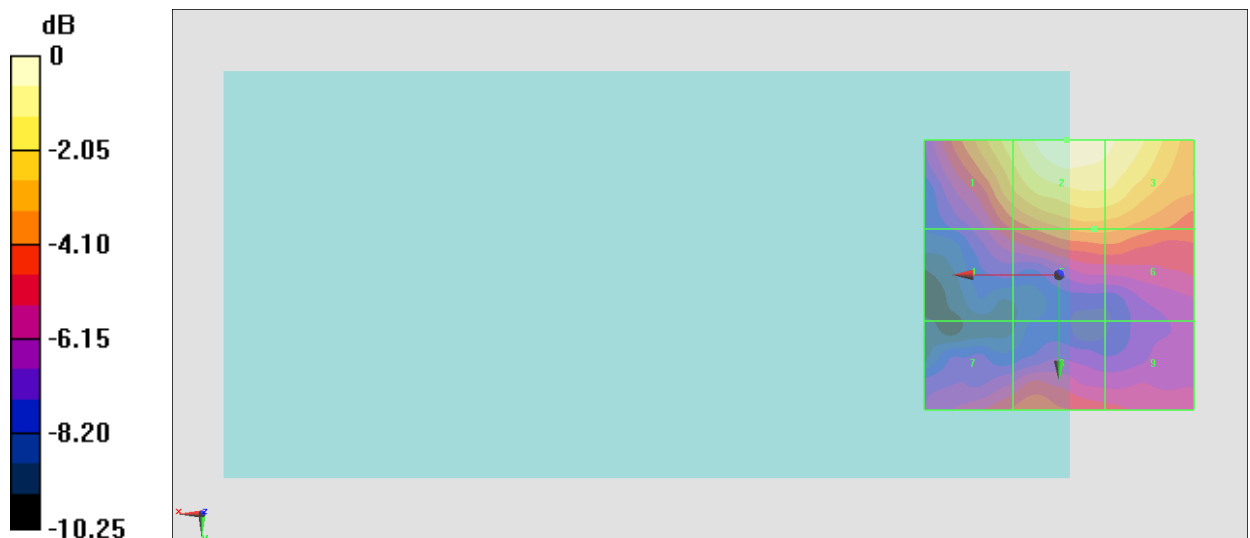
<b>Grid 1 M4</b> <b>25.48 dBV/m</b>	<b>Grid 2 M4</b> <b>26.94 dBV/m</b>	<b>Grid 3 M4</b> <b>26.48 dBV/m</b>
<b>Grid 4 M4</b> <b>22.25 dBV/m</b>	<b>Grid 5 M4</b> <b>23.78 dBV/m</b>	<b>Grid 6 M4</b> <b>23.74 dBV/m</b>
<b>Grid 7 M4</b> <b>22.31 dBV/m</b>	<b>Grid 8 M4</b> <b>22.63 dBV/m</b>	<b>Grid 9 M4</b> <b>21.84 dBV/m</b>

**Cursor:**

Total = 26.94 dBV/m

E Category: M4

Location: -1.5, -25, 7.7 mm



0 dB = 22.25 V/m = 26.95 dBV/m

### #20\_HAC\_E\_CDMA BC0\_ 1xRTT, RC1 SO3, 1/8th Rate\_Ch1013

Communication System: CDMA2000, RC1, SO3, 1/8th Rate 25 fr.; Frequency: 824.7 MHz; Duty Cycle: 1:17.7419

Medium: Air Medium parameters used:  $\sigma = 0 \text{ S/m}$ ,  $\epsilon_r = 1$ ;  $\rho = 0 \text{ kg/m}^3$

Ambient Temperature : 23.2 °C

**DASY5 Configuration:**

- Probe: EF3DV3 - SN4047; ConvF(1, 1, 1) @ 824.7 MHz; Calibrated: 2019/1/30
- Sensor-Surface: (Fix Surface)
- Electronics: DAE4 Sn854; Calibrated: 2018/6/14
- Phantom: HAC Test Arch with AMCC; Type: SD HAC P01 BA;
- Measurement SW: DASY52, Version 52.10 (1); SEMCAD X Version 14.6.11 (7439)

### E Scan - ER3D: 15 mm from Probe Center to the Device/Hearing Aid Compatibility Test

**(101x101x1):** Interpolated grid: dx=0.5000 mm, dy=0.5000 mm

Device Reference Point: 0, 0, -6.3 mm

Reference Value = 18.51 V/m; Power Drift = -0.09 dB

Applied MIF = 3.26 dB

RF audio interference level = 26.75 dBV/m

**Emission category: M4**

MIF scaled E-field

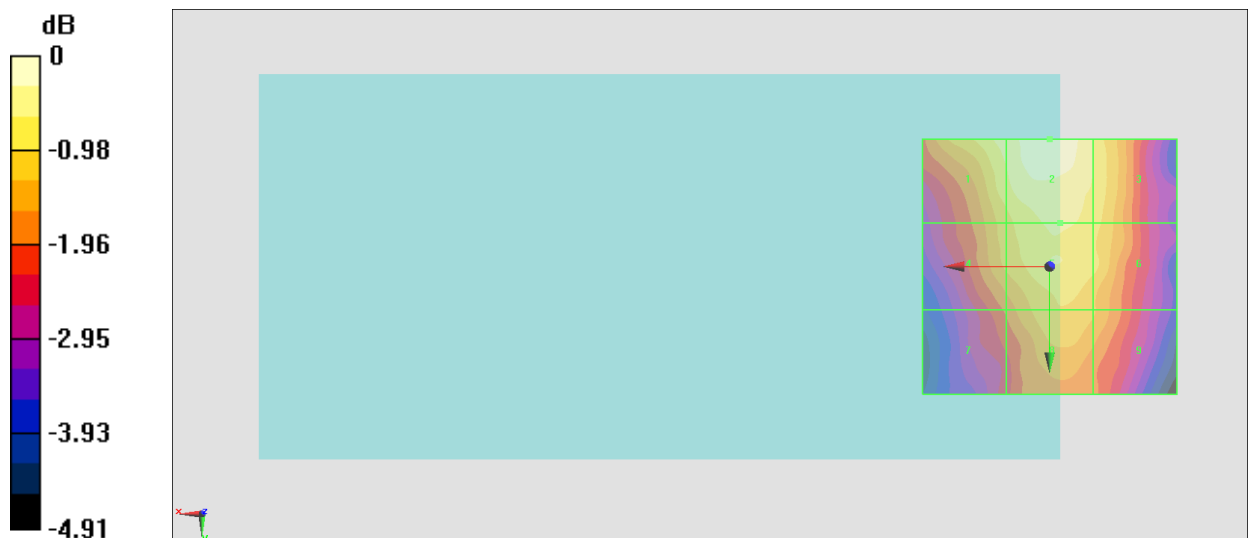
<b>Grid 1 M4</b> <b>26.29 dBV/m</b>	<b>Grid 2 M4</b> <b>26.75 dBV/m</b>	<b>Grid 3 M4</b> <b>26.11 dBV/m</b>
<b>Grid 4 M4</b> <b>25.65 dBV/m</b>	<b>Grid 5 M4</b> <b>26.14 dBV/m</b>	<b>Grid 6 M4</b> <b>25.92 dBV/m</b>
<b>Grid 7 M4</b> <b>24.88 dBV/m</b>	<b>Grid 8 M4</b> <b>25.75 dBV/m</b>	<b>Grid 9 M4</b> <b>25.49 dBV/m</b>

**Cursor:**

Total = 26.75 dBV/m

E Category: M4

Location: 0, -25, 8.7 mm



0 dB = 21.74 V/m = 26.75 dBV/m

### #21\_HAC\_E\_CDMA BC0\_1xRTT, RC1 SO3, 1/8th Rate\_Ch384

Communication System: CDMA2000, RC1, SO3, 1/8th Rate 25 fr.; Frequency: 836.52 MHz; Duty Cycle: 1:17.7419

Medium: Air Medium parameters used:  $\sigma = 0 \text{ S/m}$ ,  $\epsilon_r = 1$ ;  $\rho = 0 \text{ kg/m}^3$

Ambient Temperature : 23.2 °C

**DASY5 Configuration:**

- Probe: EF3DV3 - SN4047; ConvF(1, 1, 1) @ 836.52 MHz; Calibrated: 2019/1/30
- Sensor-Surface: (Fix Surface)
- Electronics: DAE4 Sn854; Calibrated: 2018/6/14
- Phantom: HAC Test Arch with AMCC; Type: SD HAC P01 BA;
- Measurement SW: DASY52, Version 52.10 (1); SEMCAD X Version 14.6.11 (7439)

### E Scan - ER3D: 15 mm from Probe Center to the Device/Hearing Aid Compatibility Test

**(101x101x1):** Interpolated grid: dx=0.5000 mm, dy=0.5000 mm

Device Reference Point: 0, 0, -6.3 mm

Reference Value = 18.34 V/m; Power Drift = 0.03 dB

Applied MIF = 3.26 dB

RF audio interference level = 26.54 dBV/m

**Emission category: M4**

MIF scaled E-field

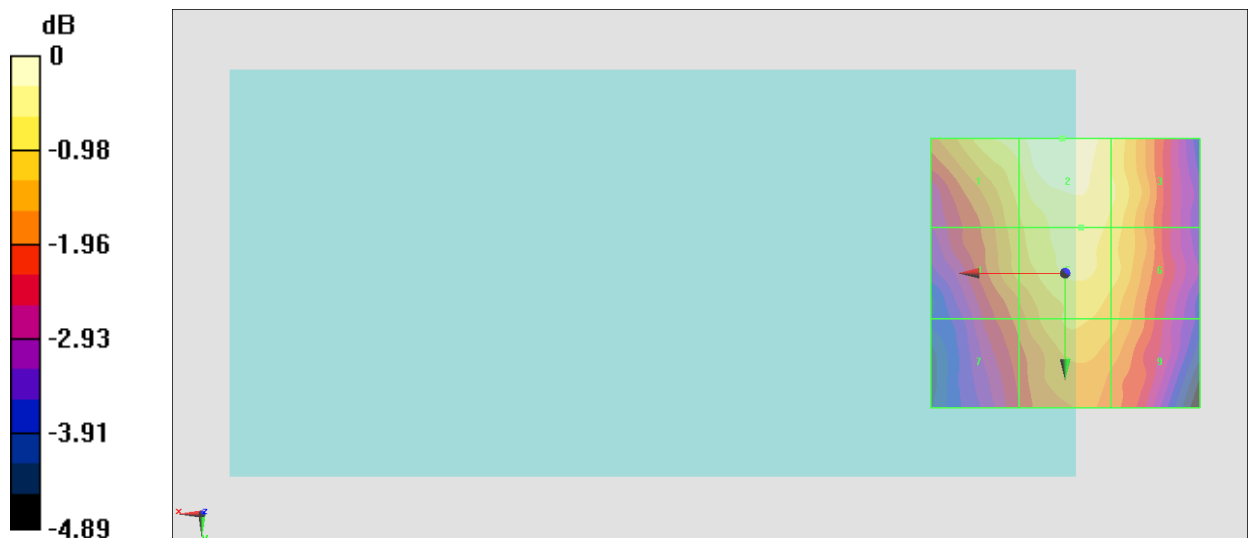
<b>Grid 1 M4</b> <b>26.12 dBV/m</b>	<b>Grid 2 M4</b> <b>26.54 dBV/m</b>	<b>Grid 3 M4</b> <b>25.98 dBV/m</b>
<b>Grid 4 M4</b> <b>25.5 dBV/m</b>	<b>Grid 5 M4</b> <b>26.06 dBV/m</b>	<b>Grid 6 M4</b> <b>25.79 dBV/m</b>
<b>Grid 7 M4</b> <b>24.76 dBV/m</b>	<b>Grid 8 M4</b> <b>25.62 dBV/m</b>	<b>Grid 9 M4</b> <b>25.38 dBV/m</b>

**Cursor:**

Total = 26.54 dBV/m

E Category: M4

Location: 0.5, -25, 8.7 mm



0 dB = 21.23 V/m = 26.54 dBV/m

**#22\_HAC\_E\_CDMA BC0\_1xRTT, RC1 SO3, 1/8th Rate\_Ch777**

Communication System: CDMA2000, RC1, SO3, 1/8th Rate 25 fr.; Frequency: 848.31 MHz; Duty Cycle: 1:17.7419

Medium: Air Medium parameters used:  $\sigma = 0 \text{ S/m}$ ,  $\epsilon_r = 1$ ;  $\rho = 0 \text{ kg/m}^3$

Ambient Temperature : 23.2 °C

DASY5 Configuration:

- Probe: EF3DV3 - SN4047; ConvF(1, 1, 1) @ 848.31 MHz; Calibrated: 2019/1/30
- Sensor-Surface: (Fix Surface)
- Electronics: DAE4 Sn854; Calibrated: 2018/6/14
- Phantom: HAC Test Arch with AMCC; Type: SD HAC P01 BA;
- Measurement SW: DASY52, Version 52.10 (1); SEMCAD X Version 14.6.11 (7439)

**E Scan - ER3D: 15 mm from Probe Center to the Device/Hearing Aid Compatibility Test**

**(101x101x1):** Interpolated grid: dx=0.5000 mm, dy=0.5000 mm

Device Reference Point: 0, 0, -6.3 mm

Reference Value = 17.70 V/m; Power Drift = 0.11 dB

Applied MIF = 3.26 dB

RF audio interference level = 26.34 dBV/m

**Emission category: M4**

MIF scaled E-field

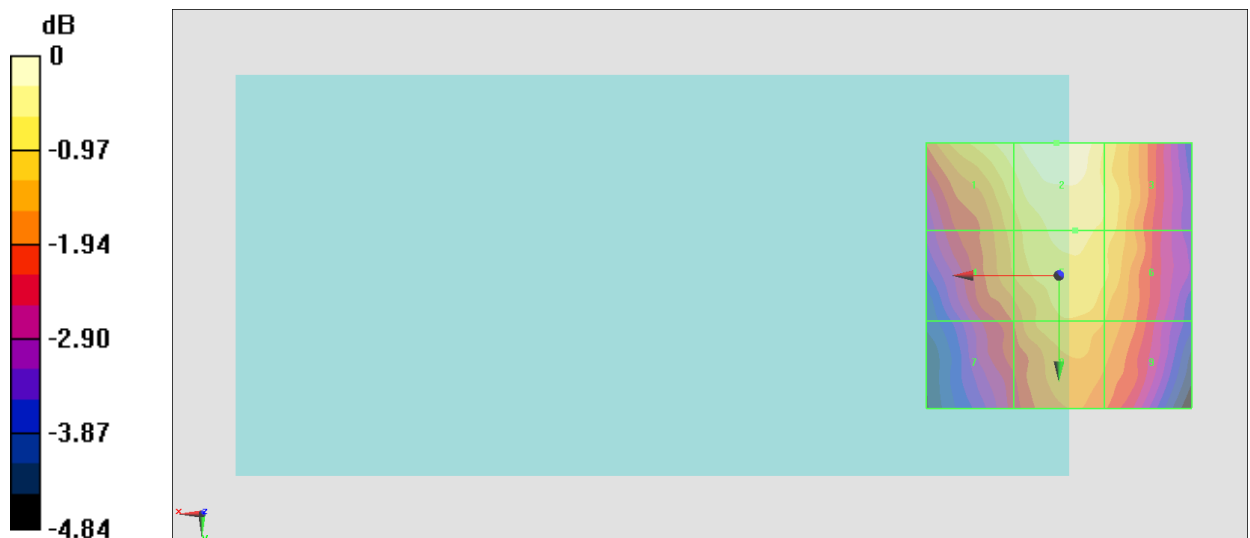
<b>Grid 1 M4</b> <b>25.96 dBV/m</b>	<b>Grid 2 M4</b> <b>26.34 dBV/m</b>	<b>Grid 3 M4</b> <b>25.72 dBV/m</b>
<b>Grid 4 M4</b> <b>25.22 dBV/m</b>	<b>Grid 5 M4</b> <b>25.79 dBV/m</b>	<b>Grid 6 M4</b> <b>25.61 dBV/m</b>
<b>Grid 7 M4</b> <b>24.46 dBV/m</b>	<b>Grid 8 M4</b> <b>25.35 dBV/m</b>	<b>Grid 9 M4</b> <b>25.06 dBV/m</b>

**Cursor:**

Total = 26.34 dBV/m

E Category: M4

Location: 0.5, -25, 8.7 mm



0 dB = 20.75 V/m = 26.34 dBV/m

### #23\_HAC\_E\_CDMA BC1\_ 1xRTT, RC1 SO3, 1/8th Rate\_Ch25

Communication System: CDMA2000, RC1, SO3, 1/8th Rate 25 fr.; Frequency: 1851.25 MHz; Duty Cycle: 1:17.7419

Medium: Air Medium parameters used:  $\sigma = 0$  S/m,  $\epsilon_r = 1$ ;  $\rho = 0$  kg/m<sup>3</sup>

Ambient Temperature : 23.2 °C

**DASY5 Configuration:**

- Probe: EF3DV3 - SN4047; ConvF(1, 1, 1) @ 1851.25 MHz; Calibrated: 2019/1/30
- Sensor-Surface: (Fix Surface)
- Electronics: DAE4 Sn854; Calibrated: 2018/6/14
- Phantom: HAC Test Arch with AMCC; Type: SD HAC P01 BA;
- Measurement SW: DASY52, Version 52.10 (1); SEMCAD X Version 14.6.11 (7439)

### E Scan - ER3D: 15 mm from Probe Center to the Device/Hearing Aid Compatibility Test

**(101x101x1):** Interpolated grid: dx=0.5000 mm, dy=0.5000 mm

Device Reference Point: 0, 0, -6.3 mm

Reference Value = 5.266 V/m; Power Drift = 0.03 dB

Applied MIF = 3.26 dB

RF audio interference level = 22.43 dBV/m

**Emission category: M4**

MIF scaled E-field

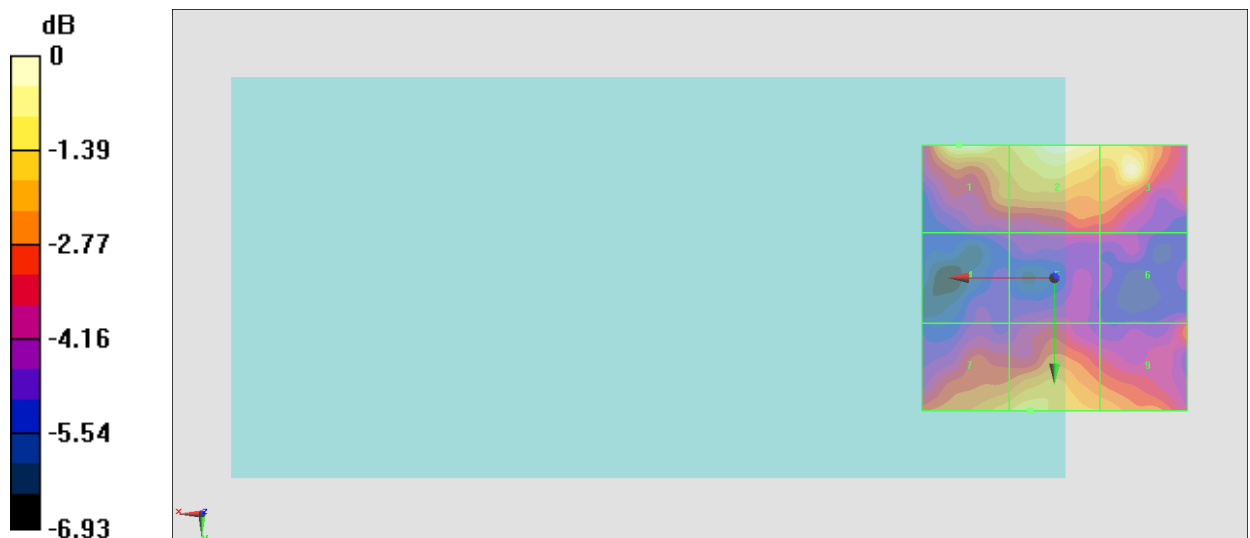
<b>Grid 1 M4</b> <b>22.43 dBV/m</b>	<b>Grid 2 M4</b> <b>22.35 dBV/m</b>	<b>Grid 3 M4</b> <b>22.26 dBV/m</b>
<b>Grid 4 M4</b> <b>18.15 dBV/m</b>	<b>Grid 5 M4</b> <b>18.81 dBV/m</b>	<b>Grid 6 M4</b> <b>19.07 dBV/m</b>
<b>Grid 7 M4</b> <b>21.02 dBV/m</b>	<b>Grid 8 M4</b> <b>21.41 dBV/m</b>	<b>Grid 9 M4</b> <b>20.62 dBV/m</b>

**Cursor:**

Total = 22.43 dBV/m

E Category: M4

Location: 18, -25, 8.7 mm



0 dB = 13.23 V/m = 22.43 dBV/m

### #24\_HAC\_E\_CDMA BC1\_ 1xRTT, RC1 SO3, 1/8th Rate\_Ch600

Communication System: CDMA2000, RC1, SO3, 1/8th Rate 25 fr.; Frequency: 1880 MHz; Duty Cycle: 1:17.7419

Medium: Air Medium parameters used:  $\sigma = 0$  S/m,  $\epsilon_r = 1$ ;  $\rho = 0$  kg/m<sup>3</sup>

Ambient Temperature : 23.2 °C

**DASY5 Configuration:**

- Probe: EF3DV3 - SN4047; ConvF(1, 1, 1) @ 1880 MHz; Calibrated: 2019/1/30
- Sensor-Surface: (Fix Surface)
- Electronics: DAE4 Sn854; Calibrated: 2018/6/14
- Phantom: HAC Test Arch with AMCC; Type: SD HAC P01 BA;
- Measurement SW: DASY52, Version 52.10 (1); SEMCAD X Version 14.6.11 (7439)

**E Scan - ER3D: 15 mm from Probe Center to the Device/Hearing Aid Compatibility Test**

**(101x101x1):** Interpolated grid: dx=0.5000 mm, dy=0.5000 mm

Device Reference Point: 0, 0, -6.3 mm

Reference Value = 4.883 V/m; Power Drift = 0.03 dB

Applied MIF = 3.26 dB

RF audio interference level = 21.94 dBV/m

**Emission category: M4**

MIF scaled E-field

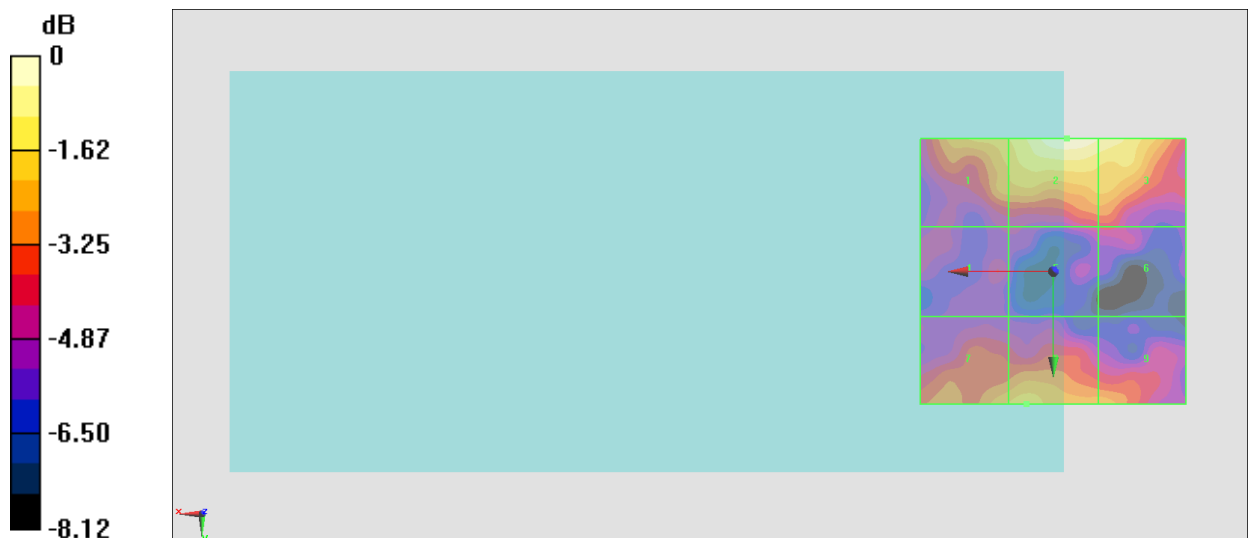
<b>Grid 1 M4</b> <b>20.33 dBV/m</b>	<b>Grid 2 M4</b> <b>21.94 dBV/m</b>	<b>Grid 3 M4</b> <b>21.43 dBV/m</b>
<b>Grid 4 M4</b> <b>17.66 dBV/m</b>	<b>Grid 5 M4</b> <b>17.8 dBV/m</b>	<b>Grid 6 M4</b> <b>17.92 dBV/m</b>
<b>Grid 7 M4</b> <b>19.92 dBV/m</b>	<b>Grid 8 M4</b> <b>20.31 dBV/m</b>	<b>Grid 9 M4</b> <b>19.74 dBV/m</b>

**Cursor:**

Total = 21.94 dBV/m

E Category: M4

Location: -2.5, -25, 8.7 mm



0 dB = 12.51 V/m = 21.95 dBV/m

## #25\_HAC\_E\_CDMA BC1\_ 1xRTT, RC1 SO3, 1/8th Rate\_Ch1175

Communication System: CDMA2000, RC1, SO3, 1/8th Rate 25 fr.; Frequency: 1908.75 MHz; Duty Cycle: 1:17.7419

Medium: Air Medium parameters used:  $\sigma = 0 \text{ S/m}$ ,  $\epsilon_r = 1$ ;  $\rho = 0 \text{ kg/m}^3$

Ambient Temperature : 23.2 °C

DASY5 Configuration:

- Probe: EF3DV3 - SN4047; ConvF(1, 1, 1) @ 1908.75 MHz; Calibrated: 2019/1/30
- Sensor-Surface: (Fix Surface)
- Electronics: DAE4 Sn854; Calibrated: 2018/6/14
- Phantom: HAC Test Arch with AMCC; Type: SD HAC P01 BA;
- Measurement SW: DASY52, Version 52.10 (1); SEMCAD X Version 14.6.11 (7439)

### E Scan - ER3D: 15 mm from Probe Center to the Device/Hearing Aid Compatibility Test

**(101x101x1):** Interpolated grid: dx=0.5000 mm, dy=0.5000 mm

Device Reference Point: 0, 0, -6.3 mm

Reference Value = 5.484 V/m; Power Drift = -0.07 dB

Applied MIF = 3.26 dB

RF audio interference level = 21.72 dBV/m

**Emission category: M4**

MIF scaled E-field

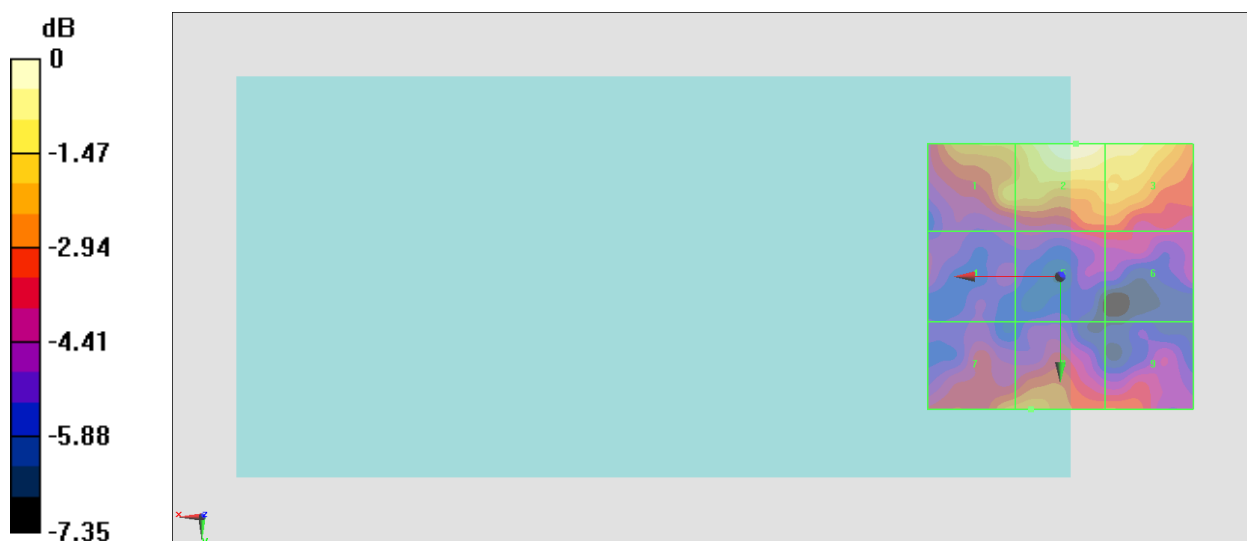
<b>Grid 1 M4</b> <b>20.16 dBV/m</b>	<b>Grid 2 M4</b> <b>21.72 dBV/m</b>	<b>Grid 3 M4</b> <b>21.2 dBV/m</b>
<b>Grid 4 M4</b> <b>17.56 dBV/m</b>	<b>Grid 5 M4</b> <b>18.37 dBV/m</b>	<b>Grid 6 M4</b> <b>18.41 dBV/m</b>
<b>Grid 7 M4</b> <b>19.65 dBV/m</b>	<b>Grid 8 M4</b> <b>19.83 dBV/m</b>	<b>Grid 9 M4</b> <b>18.91 dBV/m</b>

**Cursor:**

Total = 21.72 dBV/m

E Category: M4

Location: -3, -25, 8.7 mm



0 dB = 12.19 V/m = 21.72 dBV/m

### #26\_HAC\_E\_CDMA BC10\_ 1xRTT, RC1 SO3, 1/8th Rate\_Ch476

Communication System: CDMA2000, RC1, SO3, 1/8th Rate 25 fr.; Frequency: 817.9 MHz; Duty Cycle: 1:17.7419

Medium: Air Medium parameters used:  $\sigma = 0$  S/m,  $\epsilon_r = 1$ ;  $\rho = 0$  kg/m<sup>3</sup>

Ambient Temperature : 23.2 °C

DASY5 Configuration:

- Probe: EF3DV3 - SN4047; ConvF(1, 1, 1) @ 817.9 MHz; Calibrated: 2019/1/30
- Sensor-Surface: (Fix Surface)
- Electronics: DAE4 Sn854; Calibrated: 2018/6/14
- Phantom: HAC Test Arch with AMCC; Type: SD HAC P01 BA;
- Measurement SW: DASY52, Version 52.10 (1); SEMCAD X Version 14.6.11 (7439)

### E Scan - ER3D: 15 mm from Probe Center to the Device/Hearing Aid Compatibility Test

**(101x101x1):** Interpolated grid: dx=0.5000 mm, dy=0.5000 mm

Device Reference Point: 0, 0, -6.3 mm

Reference Value = 21.01 V/m; Power Drift = -0.06 dB

Applied MIF = 3.26 dB

RF audio interference level = 27.27 dBV/m

**Emission category: M4**

MIF scaled E-field

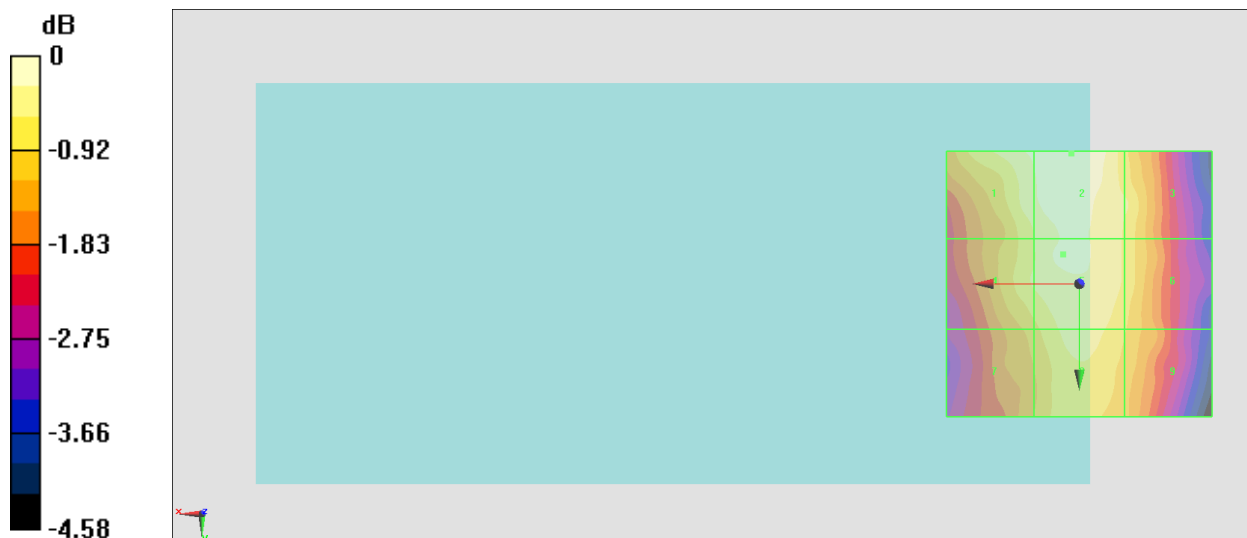
<b>Grid 1 M4</b> <b>27.04 dBV/m</b>	<b>Grid 2 M4</b> <b>27.27 dBV/m</b>	<b>Grid 3 M4</b> <b>26.71 dBV/m</b>
<b>Grid 4 M4</b> <b>26.7 dBV/m</b>	<b>Grid 5 M4</b> <b>27 dBV/m</b>	<b>Grid 6 M4</b> <b>26.61 dBV/m</b>
<b>Grid 7 M4</b> <b>26.25 dBV/m</b>	<b>Grid 8 M4</b> <b>26.87 dBV/m</b>	<b>Grid 9 M4</b> <b>26.39 dBV/m</b>

**Cursor:**

Total = 27.27 dBV/m

E Category: M4

Location: 1.5, -24.5, 8.7 mm



0 dB = 23.08 V/m = 27.26 dBV/m

**#27\_HAC\_E\_CDMA BC10\_ 1xRTT, RC1 SO3, 1/8th Rate\_Ch580**

Communication System: CDMA2000, RC1, SO3, 1/8th Rate 25 fr.; Frequency: 820.5 MHz; Duty Cycle: 1:17.7419

Medium: Air Medium parameters used:  $\sigma = 0 \text{ S/m}$ ,  $\epsilon_r = 1$ ;  $\rho = 0 \text{ kg/m}^3$

Ambient Temperature : 23.2 °C

**DASY5 Configuration:**

- Probe: EF3DV3 - SN4047; ConvF(1, 1, 1) @ 820.5 MHz; Calibrated: 2019/1/30
- Sensor-Surface: (Fix Surface)
- Electronics: DAE4 Sn854; Calibrated: 2018/6/14
- Phantom: HAC Test Arch with AMCC; Type: SD HAC P01 BA;
- Measurement SW: DASY52, Version 52.10 (1); SEMCAD X Version 14.6.11 (7439)

**E Scan - ER3D: 15 mm from Probe Center to the Device/Hearing Aid Compatibility Test**

**(101x101x1):** Interpolated grid: dx=0.5000 mm, dy=0.5000 mm

Device Reference Point: 0, 0, -6.3 mm

Reference Value = 21.08 V/m; Power Drift = -0.06 dB

Applied MIF = 3.26 dB

RF audio interference level = 27.32 dBV/m

**Emission category: M4**

MIF scaled E-field

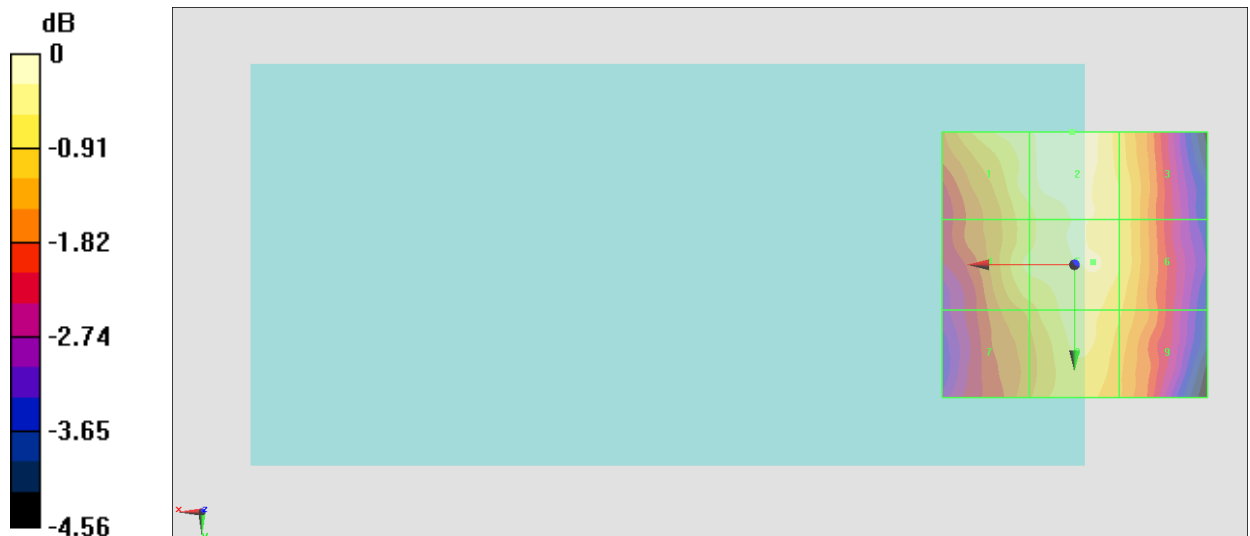
<b>Grid 1 M4</b> <b>26.98 dBV/m</b>	<b>Grid 2 M4</b> <b>27.32 dBV/m</b>	<b>Grid 3 M4</b> <b>26.71 dBV/m</b>
<b>Grid 4 M4</b> <b>26.78 dBV/m</b>	<b>Grid 5 M4</b> <b>27.07 dBV/m</b>	<b>Grid 6 M4</b> <b>26.73 dBV/m</b>
<b>Grid 7 M4</b> <b>26.25 dBV/m</b>	<b>Grid 8 M4</b> <b>26.86 dBV/m</b>	<b>Grid 9 M4</b> <b>26.46 dBV/m</b>

**Cursor:**

Total = 27.32 dBV/m

E Category: M4

Location: 0.5, -25, 8.7 mm



0 dB = 23.23 V/m = 27.32 dBV/m

### #28\_HAC\_E\_CDMA BC10\_ 1xRTT, RC1 SO3, 1/8th Rate\_Ch684

Communication System: CDMA2000, RC1, SO3, 1/8th Rate 25 fr.; Frequency: 823.1 MHz; Duty Cycle: 1:17.7419

Medium: Air Medium parameters used:  $\sigma = 0$  S/m,  $\epsilon_r = 1$ ;  $\rho = 0$  kg/m<sup>3</sup>

Ambient Temperature : 23.2 °C

DASY5 Configuration:

- Probe: EF3DV3 - SN4047; ConvF(1, 1, 1) @ 823.1 MHz; Calibrated: 2019/1/30
- Sensor-Surface: (Fix Surface)
- Electronics: DAE4 Sn854; Calibrated: 2018/6/14
- Phantom: HAC Test Arch with AMCC; Type: SD HAC P01 BA;
- Measurement SW: DASY52, Version 52.10 (1); SEMCAD X Version 14.6.11 (7439)

### E Scan - ER3D: 15 mm from Probe Center to the Device/Hearing Aid Compatibility Test

**(101x101x1):** Interpolated grid: dx=0.5000 mm, dy=0.5000 mm

Device Reference Point: 0, 0, -6.3 mm

Reference Value = 20.85 V/m; Power Drift = -0.04 dB

Applied MIF = 3.26 dB

RF audio interference level = 27.19 dBV/m

**Emission category: M4**

MIF scaled E-field

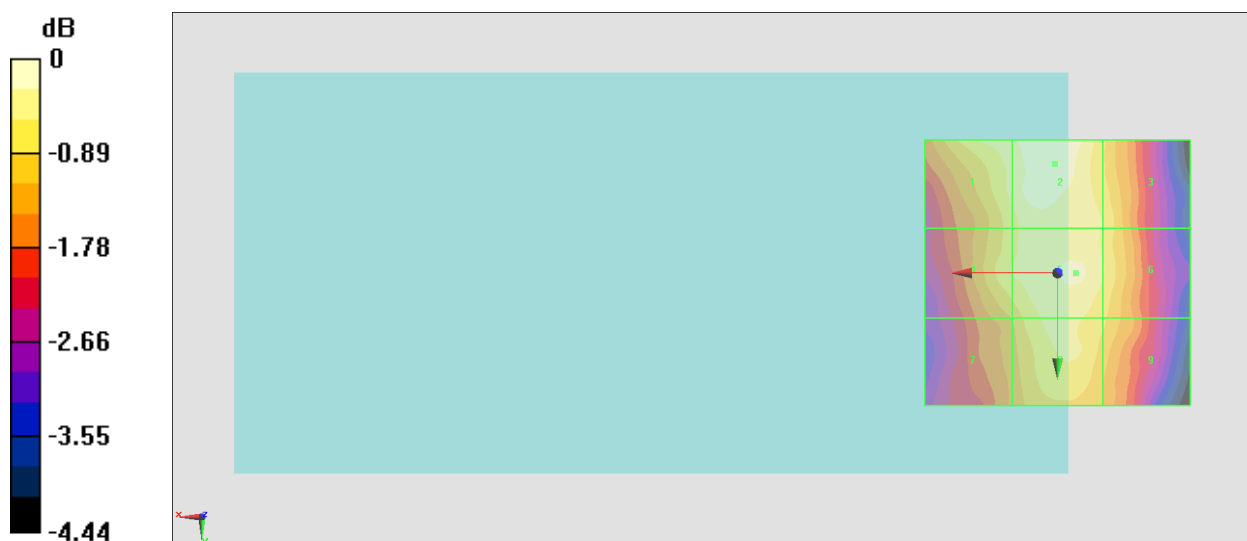
<b>Grid 1 M4</b> <b>26.84 dBV/m</b>	<b>Grid 2 M4</b> <b>27.19 dBV/m</b>	<b>Grid 3 M4</b> <b>26.59 dBV/m</b>
<b>Grid 4 M4</b> <b>26.62 dBV/m</b>	<b>Grid 5 M4</b> <b>26.95 dBV/m</b>	<b>Grid 6 M4</b> <b>26.63 dBV/m</b>
<b>Grid 7 M4</b> <b>26.04 dBV/m</b>	<b>Grid 8 M4</b> <b>26.74 dBV/m</b>	<b>Grid 9 M4</b> <b>26.37 dBV/m</b>

**Cursor:**

Total = 27.19 dBV/m

E Category: M4

Location: 0.5, -20.5, 8.7 mm



0 dB = 22.87 V/m = 27.19 dBV/m

### #07\_HAC\_E\_LTE Band 41\_20M\_QPSK\_1\_0\_Ch39750

Communication System: LTE-TDD (SC-FDMA, 1 RB, 20 MHz, QPSK); Frequency: 2506 MHz; Duty Cycle: 1:8.33681

Medium: Air Medium parameters used:  $\sigma = 0$  S/m,  $\epsilon_r = 1$ ;  $\rho = 0$  kg/m<sup>3</sup>

Ambient Temperature : 23.5 °C

DASY5 Configuration:

- Probe: EF3DV3 - SN4047; ConvF(1, 1, 1) @ 2506 MHz; Calibrated: 2019/1/30
- Sensor-Surface: (Fix Surface)
- Electronics: DAE4 Sn854; Calibrated: 2018/6/14
- Phantom: HAC Test Arch with AMCC; Type: SD HAC P01 BA;
- Measurement SW: DASY52, Version 52.10 (1); SEMCAD X Version 14.6.11 (7439)

### E Scan - ER3D: 15 mm from Probe Center to the Device/Hearing Aid Compatibility Test

**(101x101x1):** Interpolated grid: dx=0.5000 mm, dy=0.5000 mm

Device Reference Point: 0, 0, -6.3 mm

Reference Value = 13.04 V/m; Power Drift = 0.08 dB

Applied MIF = -1.62 dB

RF audio interference level = 24.98 dBV/m

**Emission category: M4**

MIF scaled E-field

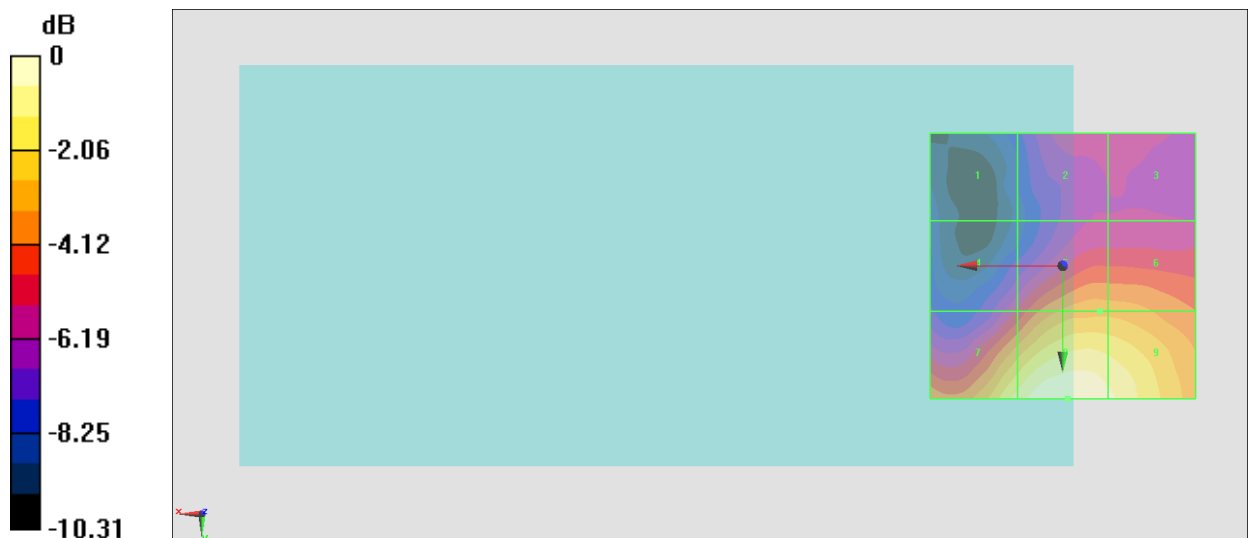
<b>Grid 1 M4</b> <b>17.29 dBV/m</b>	<b>Grid 2 M4</b> <b>19.34 dBV/m</b>	<b>Grid 3 M4</b> <b>19.24 dBV/m</b>
<b>Grid 4 M4</b> <b>19.61 dBV/m</b>	<b>Grid 5 M4</b> <b>22.02 dBV/m</b>	<b>Grid 6 M4</b> <b>22 dBV/m</b>
<b>Grid 7 M4</b> <b>23.93 dBV/m</b>	<b>Grid 8 M4</b> <b>24.98 dBV/m</b>	<b>Grid 9 M4</b> <b>24.47 dBV/m</b>

**Cursor:**

Total = 24.98 dBV/m

E Category: M4

Location: -1, 25, 7.7 mm



0 dB = 17.73 V/m = 24.97 dBV/m

### #08\_HAC\_E\_LTE Band 41\_20M\_QPSK\_1\_0\_Ch40185

Communication System: LTE-TDD (SC-FDMA, 1 RB, 20 MHz, QPSK); Frequency: 2549.5 MHz; Duty Cycle: 1:8.33681

Medium: Air Medium parameters used:  $\sigma = 0$  S/m,  $\epsilon_r = 1$ ;  $\rho = 0$  kg/m<sup>3</sup>

Ambient Temperature : 23.5 °C

DASY5 Configuration:

- Probe: EF3DV3 - SN4047; ConvF(1, 1, 1) @ 2549.5 MHz; Calibrated: 2019/1/30
- Sensor-Surface: (Fix Surface)
- Electronics: DAE4 Sn854; Calibrated: 2018/6/14
- Phantom: HAC Test Arch with AMCC; Type: SD HAC P01 BA;
- Measurement SW: DASY52, Version 52.10 (1); SEMCAD X Version 14.6.11 (7439)

### E Scan - ER3D: 15 mm from Probe Center to the Device/Hearing Aid Compatibility Test (101x101x1): Interpolated grid: dx=0.5000 mm, dy=0.5000 mm

Device Reference Point: 0, 0, -6.3 mm

Reference Value = 13.05 V/m; Power Drift = 0.02 dB

Applied MIF = -1.62 dB

RF audio interference level = 25.51 dBV/m

**Emission category: M4**

MIF scaled E-field

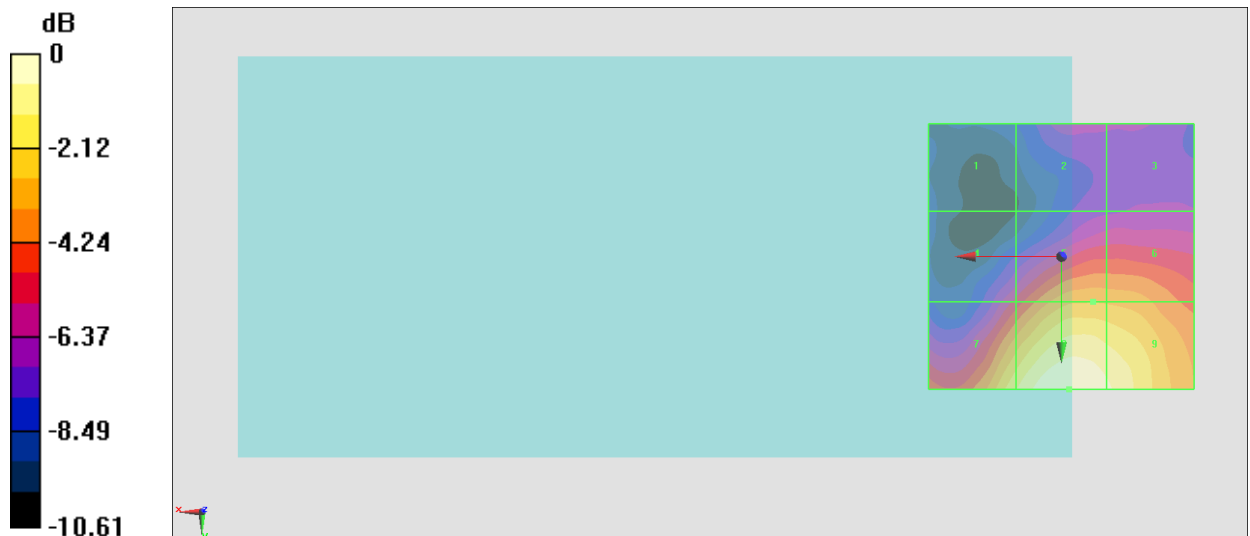
Grid 1 <b>M4</b> <b>17.11 dBV/m</b>	Grid 2 <b>M4</b> <b>18.92 dBV/m</b>	Grid 3 <b>M4</b> <b>18.67 dBV/m</b>
Grid 4 <b>M4</b> <b>20.17 dBV/m</b>	Grid 5 <b>M4</b> <b>22.65 dBV/m</b>	Grid 6 <b>M4</b> <b>22.59 dBV/m</b>
Grid 7 <b>M4</b> <b>24.11 dBV/m</b>	Grid 8 <b>M4</b> <b>25.51 dBV/m</b>	Grid 9 <b>M4</b> <b>24.95 dBV/m</b>

**Cursor:**

Total = 25.51 dBV/m

E Category: M4

Location: -1.5, 25, 7.7 mm



0 dB = 18.86 V/m = 25.51 dBV/m

### #09\_HAC\_E\_LTE Band 41\_20M\_QPSK\_1\_0\_Ch40620

Communication System: LTE-TDD (SC-FDMA, 1 RB, 20 MHz, QPSK); Frequency: 2593 MHz; Duty Cycle: 1:8.33681

Medium: Air Medium parameters used:  $\sigma = 0$  S/m,  $\epsilon_r = 1$ ;  $\rho = 0$  kg/m<sup>3</sup>

Ambient Temperature : 23.5 °C

DASY5 Configuration:

- Probe: EF3DV3 - SN4047; ConvF(1, 1, 1) @ 2593 MHz; Calibrated: 2019/1/30
- Sensor-Surface: (Fix Surface)
- Electronics: DAE4 Sn854; Calibrated: 2018/6/14
- Phantom: HAC Test Arch with AMCC; Type: SD HAC P01 BA;
- Measurement SW: DASY52, Version 52.10 (1); SEMCAD X Version 14.6.11 (7439)

### E Scan - ER3D: 15 mm from Probe Center to the Device/Hearing Aid Compatibility Test

**(101x101x1):** Interpolated grid: dx=0.5000 mm, dy=0.5000 mm

Device Reference Point: 0, 0, -6.3 mm

Reference Value = 14.78 V/m; Power Drift = -0.17 dB

Applied MIF = -1.62 dB

RF audio interference level = 25.32 dBV/m

**Emission category: M4**

MIF scaled E-field

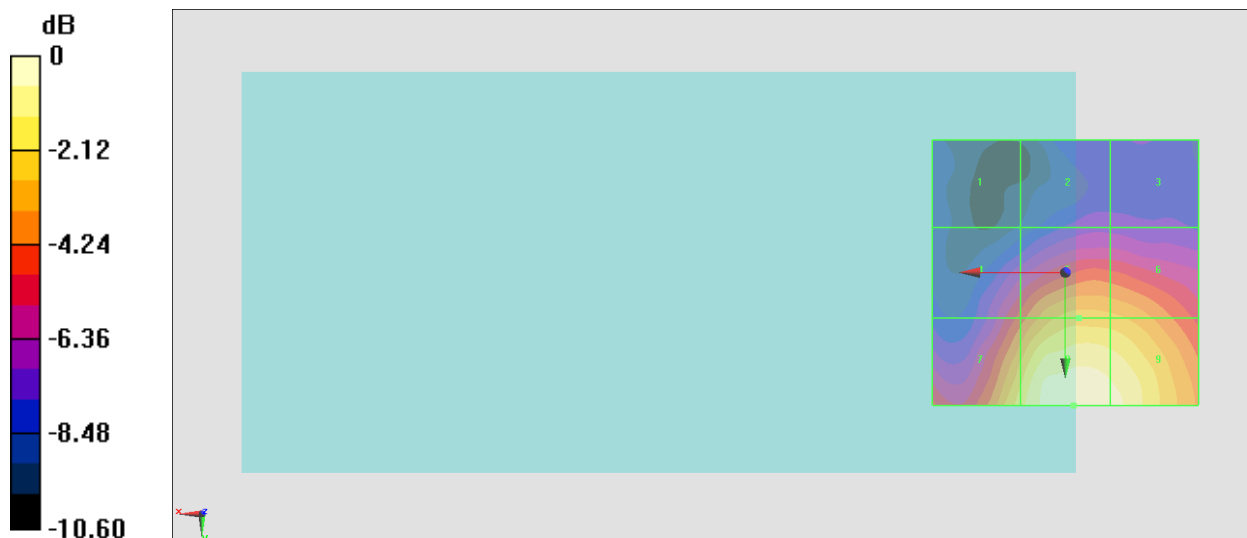
<b>Grid 1 M4</b> <b>16.87 dBV/m</b>	<b>Grid 2 M4</b> <b>18.1 dBV/m</b>	<b>Grid 3 M4</b> <b>18.02 dBV/m</b>
<b>Grid 4 M4</b> <b>20.72 dBV/m</b>	<b>Grid 5 M4</b> <b>22.85 dBV/m</b>	<b>Grid 6 M4</b> <b>22.72 dBV/m</b>
<b>Grid 7 M4</b> <b>23.63 dBV/m</b>	<b>Grid 8 M4</b> <b>25.32 dBV/m</b>	<b>Grid 9 M4</b> <b>24.96 dBV/m</b>

**Cursor:**

Total = 25.32 dBV/m

E Category: M4

Location: -1.5, 25, 7.7 mm



0 dB = 18.44 V/m = 25.32 dBV/m

### #10\_HAC\_E\_LTE Band 41\_20M\_QPSK\_1\_0\_Ch41055

Communication System: LTE-TDD (SC-FDMA, 1 RB, 20 MHz, QPSK); Frequency: 2636.5 MHz; Duty Cycle: 1:8.33681

Medium: Air Medium parameters used:  $\sigma = 0$  S/m,  $\epsilon_r = 1$ ;  $\rho = 0$  kg/m<sup>3</sup>

Ambient Temperature : 23.5 °C

DASY5 Configuration:

- Probe: EF3DV3 - SN4047; ConvF(1, 1, 1) @ 2636.5 MHz; Calibrated: 2019/1/30
- Sensor-Surface: (Fix Surface)
- Electronics: DAE4 Sn854; Calibrated: 2018/6/14
- Phantom: HAC Test Arch with AMCC; Type: SD HAC P01 BA;
- Measurement SW: DASY52, Version 52.10 (1); SEMCAD X Version 14.6.11 (7439)

### E Scan - ER3D: 15 mm from Probe Center to the Device/Hearing Aid Compatibility Test (101x101x1): Interpolated grid: dx=0.5000 mm, dy=0.5000 mm

Device Reference Point: 0, 0, -6.3 mm

Reference Value = 16.33 V/m; Power Drift = 0.05 dB

Applied MIF = -1.62 dB

RF audio interference level = 25.38 dBV/m

**Emission category: M4**

MIF scaled E-field

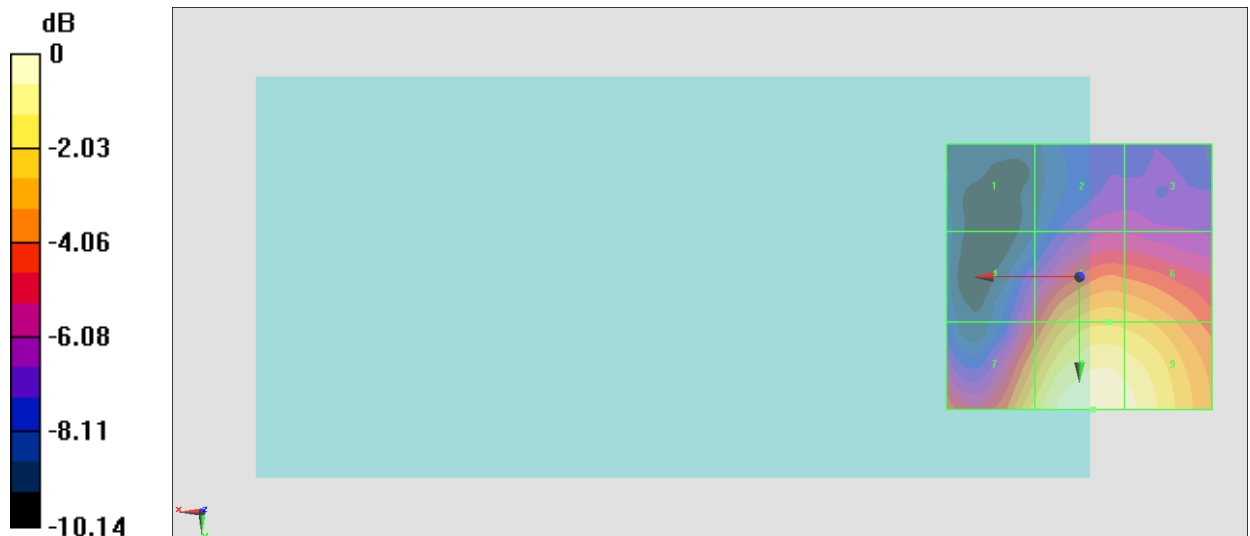
Grid 1 <b>M4</b> <b>17.13 dBV/m</b>	Grid 2 <b>M4</b> <b>19.31 dBV/m</b>	Grid 3 <b>M4</b> <b>19.26 dBV/m</b>
Grid 4 <b>M4</b> <b>20.37 dBV/m</b>	Grid 5 <b>M4</b> <b>23.25 dBV/m</b>	Grid 6 <b>M4</b> <b>23.14 dBV/m</b>
Grid 7 <b>M4</b> <b>23.64 dBV/m</b>	Grid 8 <b>M4</b> <b>25.38 dBV/m</b>	Grid 9 <b>M4</b> <b>25.04 dBV/m</b>

**Cursor:**

Total = 25.38 dBV/m

E Category: M4

Location: -2.5, 25, 7.7 mm



0 dB = 18.58 V/m = 25.38 dBV/m

### #11\_HAC\_E\_LTE Band 41\_20M\_QPSK\_1\_0\_Ch41490

Communication System: LTE-TDD (SC-FDMA, 1 RB, 20 MHz, QPSK); Frequency: 2680 MHz; Duty Cycle: 1:8.33681

Medium: Air Medium parameters used:  $\sigma = 0$  S/m,  $\epsilon_r = 1$ ;  $\rho = 0$  kg/m<sup>3</sup>

Ambient Temperature : 23.5 °C

DASY5 Configuration:

- Probe: EF3DV3 - SN4047; ConvF(1, 1, 1) @ 2680 MHz; Calibrated: 2019/1/30
- Sensor-Surface: (Fix Surface)
- Electronics: DAE4 Sn854; Calibrated: 2018/6/14
- Phantom: HAC Test Arch with AMCC; Type: SD HAC P01 BA;
- Measurement SW: DASY52, Version 52.10 (1); SEMCAD X Version 14.6.11 (7439)

### E Scan - ER3D: 15 mm from Probe Center to the Device/Hearing Aid Compatibility Test

**(101x101x1):** Interpolated grid: dx=0.5000 mm, dy=0.5000 mm

Device Reference Point: 0, 0, -6.3 mm

Reference Value = 16.55 V/m; Power Drift = 0.04 dB

Applied MIF = -1.62 dB

RF audio interference level = 25.51 dBV/m

**Emission category: M4**

MIF scaled E-field

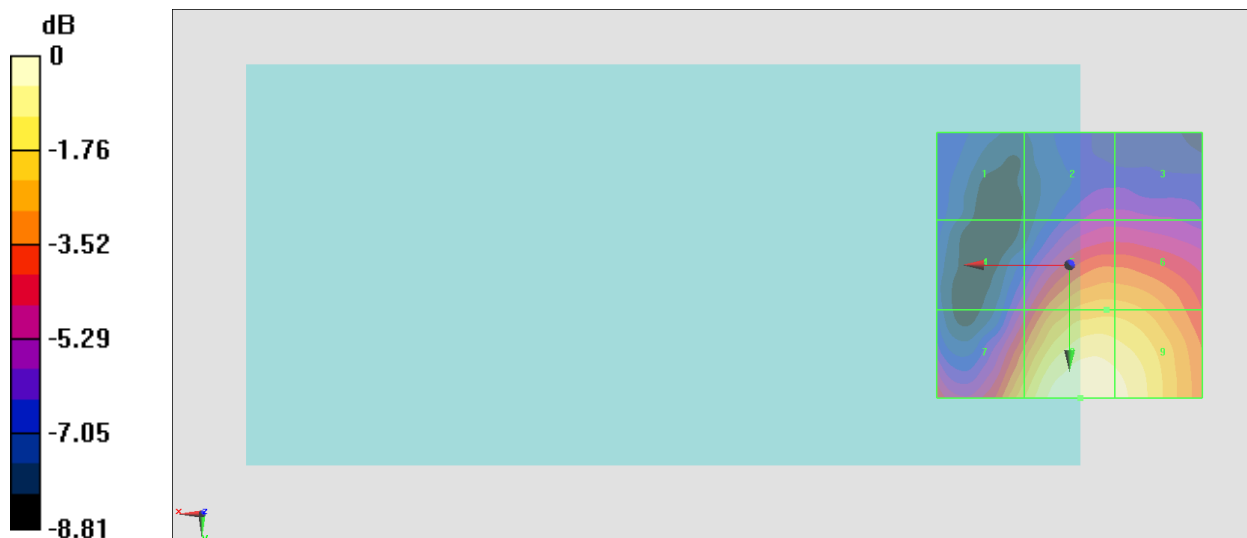
<b>Grid 1 M4</b> <b>19.02 dBV/m</b>	<b>Grid 2 M4</b> <b>20.01 dBV/m</b>	<b>Grid 3 M4</b> <b>20 dBV/m</b>
<b>Grid 4 M4</b> <b>20.44 dBV/m</b>	<b>Grid 5 M4</b> <b>23.54 dBV/m</b>	<b>Grid 6 M4</b> <b>23.52 dBV/m</b>
<b>Grid 7 M4</b> <b>23.76 dBV/m</b>	<b>Grid 8 M4</b> <b>25.51 dBV/m</b>	<b>Grid 9 M4</b> <b>25.22 dBV/m</b>

**Cursor:**

Total = 25.51 dBV/m

E Category: M4

Location: -2, 25, 7.7 mm



0 dB = 18.85 V/m = 25.51 dBV/m

### #12\_HAC\_E\_LTE Band 41\_20M\_QPSK\_1\_0\_Ch39750

Communication System: LTE-TDD (SC-FDMA, 1 RB, 20 MHz, QPSK); Frequency: 2506 MHz; Duty Cycle: 1:8.33681

Medium: Air Medium parameters used:  $\sigma = 0$  S/m,  $\epsilon_r = 1$ ;  $\rho = 0$  kg/m<sup>3</sup>

Ambient Temperature : 23.5 °C

**DASY5 Configuration:**

- Probe: EF3DV3 - SN4047; ConvF(1, 1, 1) @ 2506 MHz; Calibrated: 2019/1/30
- Sensor-Surface: (Fix Surface)
- Electronics: DAE4 Sn854; Calibrated: 2018/6/14
- Phantom: HAC Test Arch with AMCC; Type: SD HAC P01 BA;
- Measurement SW: DASY52, Version 52.10 (1); SEMCAD X Version 14.6.11 (7439)

**E Scan - ER3D: 15 mm from Probe Center to the Device/Hearing Aid Compatibility Test**

**(101x101x1):** Interpolated grid: dx=0.5000 mm, dy=0.5000 mm

Device Reference Point: 0, 0, -6.3 mm

Reference Value = 11.31 V/m; Power Drift = -0.02 dB

Applied MIF = -1.62 dB

RF audio interference level = 23.45 dBV/m

**Emission category: M4**

MIF scaled E-field

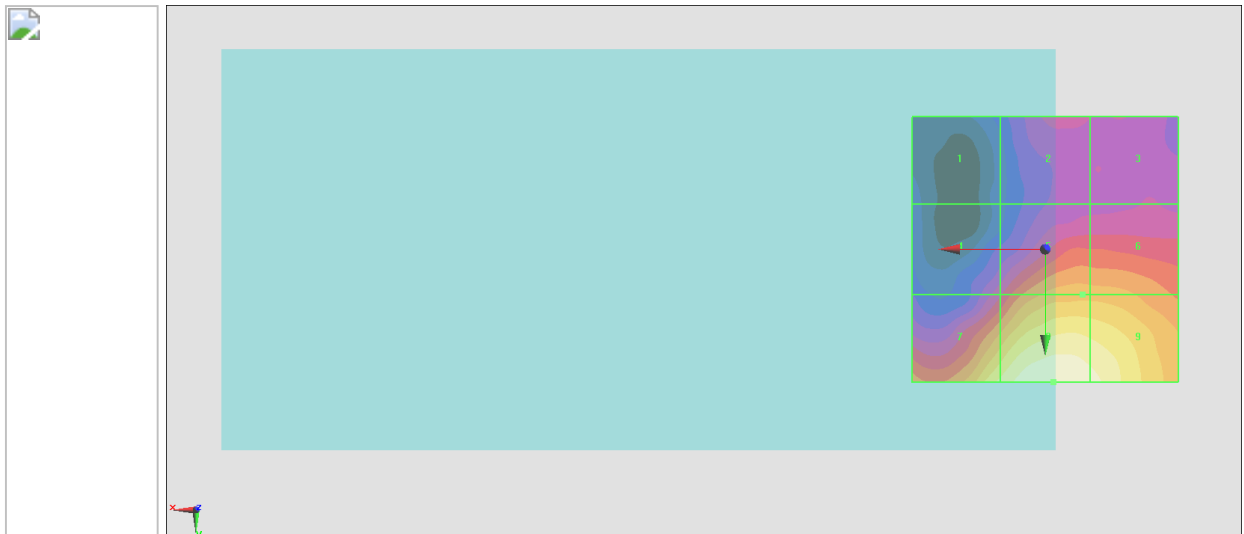
<b>Grid 1 M4</b> <b>16.02 dBV/m</b>	<b>Grid 2 M4</b> <b>17.88 dBV/m</b>	<b>Grid 3 M4</b> <b>17.69 dBV/m</b>
<b>Grid 4 M4</b> <b>18.16 dBV/m</b>	<b>Grid 5 M4</b> <b>20.62 dBV/m</b>	<b>Grid 6 M4</b> <b>20.61 dBV/m</b>
<b>Grid 7 M4</b> <b>22.36 dBV/m</b>	<b>Grid 8 M4</b> <b>23.45 dBV/m</b>	<b>Grid 9 M4</b> <b>23.06 dBV/m</b>

**Cursor:**

Total = 23.45 dBV/m

E Category: M4

Location: -1.5, 25, 7.7 mm



0 dB = 14.87 V/m = 23.45 dBV/m

### #13\_HAC\_E\_LTE Band 41\_20M\_QPSK\_1\_0\_Ch40185

Communication System: LTE-TDD (SC-FDMA, 1 RB, 20 MHz, QPSK); Frequency: 2549.5 MHz; Duty Cycle: 1:8.33681

Medium: Air Medium parameters used:  $\sigma = 0$  S/m,  $\epsilon_r = 1$ ;  $\rho = 0$  kg/m<sup>3</sup>

Ambient Temperature : 23.5 °C

DASY5 Configuration:

- Probe: EF3DV3 - SN4047; ConvF(1, 1, 1) @ 2549.5 MHz; Calibrated: 2019/1/30
- Sensor-Surface: (Fix Surface)
- Electronics: DAE4 Sn854; Calibrated: 2018/6/14
- Phantom: HAC Test Arch with AMCC; Type: SD HAC P01 BA;
- Measurement SW: DASY52, Version 52.10 (1); SEMCAD X Version 14.6.11 (7439)

### E Scan - ER3D: 15 mm from Probe Center to the Device/Hearing Aid Compatibility Test (101x101x1): Interpolated grid: dx=0.5000 mm, dy=0.5000 mm

Device Reference Point: 0, 0, -6.3 mm

Reference Value = 11.00 V/m; Power Drift = -0.03 dB

Applied MIF = -1.62 dB

RF audio interference level = 23.59 dBV/m

**Emission category: M4**

MIF scaled E-field

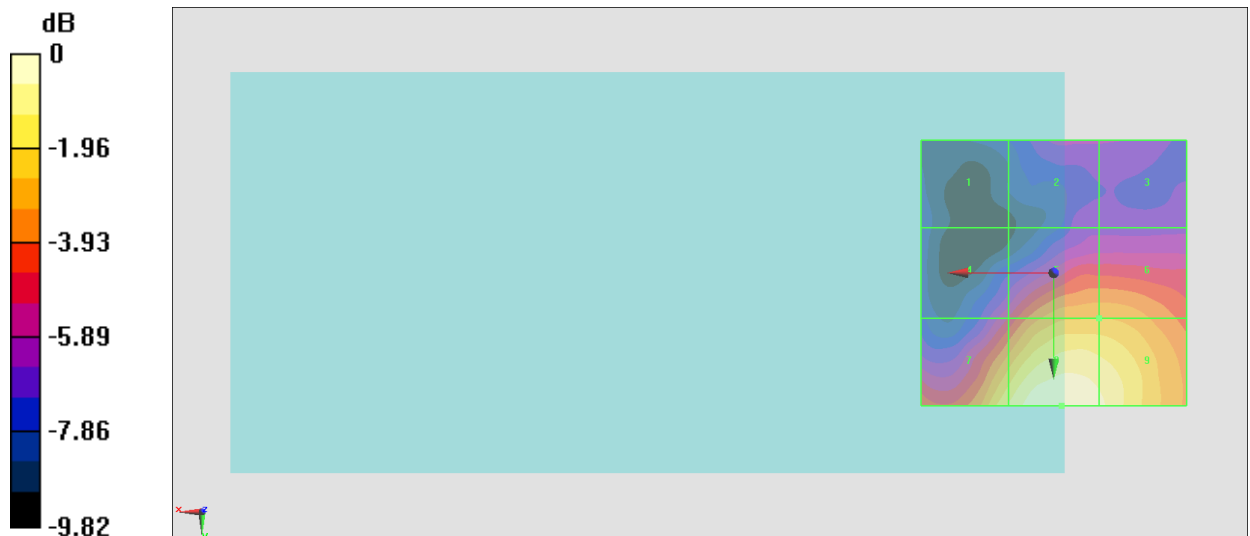
Grid 1 <b>M4</b> <b>15.83 dBV/m</b>	Grid 2 <b>M4</b> <b>17.28 dBV/m</b>	Grid 3 <b>M4</b> <b>17.17 dBV/m</b>
Grid 4 <b>M4</b> <b>18.43 dBV/m</b>	Grid 5 <b>M4</b> <b>20.98 dBV/m</b>	Grid 6 <b>M4</b> <b>20.98 dBV/m</b>
Grid 7 <b>M4</b> <b>22.38 dBV/m</b>	Grid 8 <b>M4</b> <b>23.59 dBV/m</b>	Grid 9 <b>M4</b> <b>23.1 dBV/m</b>

**Cursor:**

Total = 23.59 dBV/m

E Category: M4

Location: -1.5, 25, 7.7 mm



0 dB = 15.11 V/m = 23.59 dBV/m

### #14\_HAC\_E\_LTE Band 41\_20M\_QPSK\_1\_0\_Ch40620

Communication System: LTE-TDD (SC-FDMA, 1 RB, 20 MHz, QPSK); Frequency: 2593 MHz; Duty Cycle: 1:8.33681

Medium: Air Medium parameters used:  $\sigma = 0$  S/m,  $\epsilon_r = 1$ ;  $\rho = 0$  kg/m<sup>3</sup>

Ambient Temperature : 23.5 °C

**DASY5 Configuration:**

- Probe: EF3DV3 - SN4047; ConvF(1, 1, 1) @ 2593 MHz; Calibrated: 2019/1/30
- Sensor-Surface: (Fix Surface)
- Electronics: DAE4 Sn854; Calibrated: 2018/6/14
- Phantom: HAC Test Arch with AMCC; Type: SD HAC P01 BA;
- Measurement SW: DASY52, Version 52.10 (1); SEMCAD X Version 14.6.11 (7439)

**E Scan - ER3D: 15 mm from Probe Center to the Device/Hearing Aid Compatibility Test (101x101x1):** Interpolated grid: dx=0.5000 mm, dy=0.5000 mm

Device Reference Point: 0, 0, -6.3 mm

Reference Value = 12.15 V/m; Power Drift = 0.09 dB

Applied MIF = -1.62 dB

RF audio interference level = 23.63 dBV/m

**Emission category: M4**

MIF scaled E-field

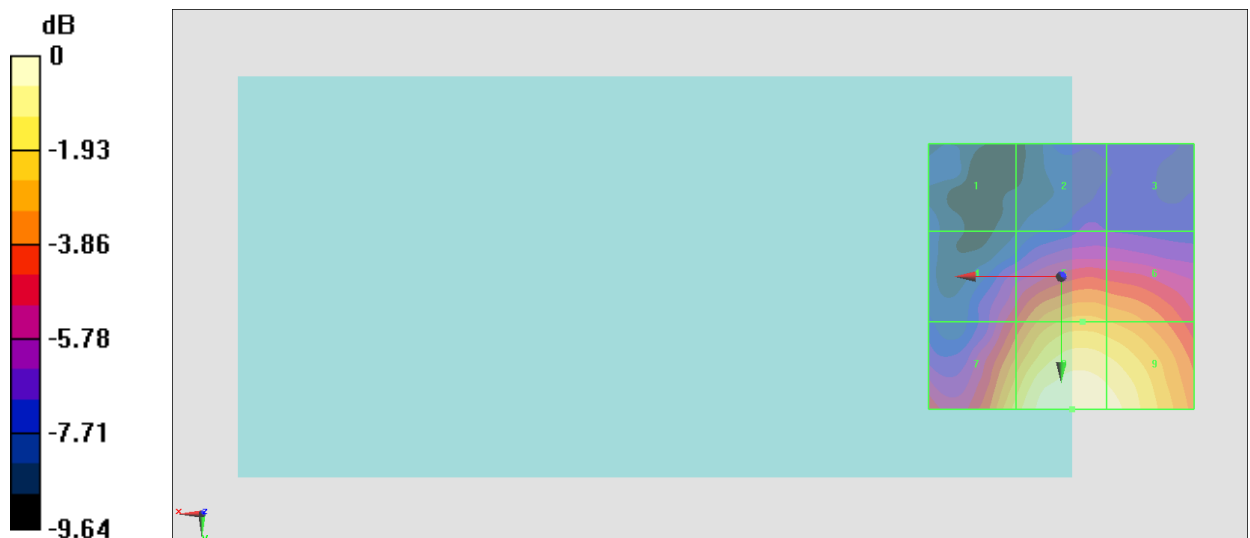
<b>Grid 1 M4</b> <b>15.89 dBV/m</b>	<b>Grid 2 M4</b> <b>16.81 dBV/m</b>	<b>Grid 3 M4</b> <b>16.64 dBV/m</b>
<b>Grid 4 M4</b> <b>19.23 dBV/m</b>	<b>Grid 5 M4</b> <b>21.32 dBV/m</b>	<b>Grid 6 M4</b> <b>21.13 dBV/m</b>
<b>Grid 7 M4</b> <b>22.03 dBV/m</b>	<b>Grid 8 M4</b> <b>23.63 dBV/m</b>	<b>Grid 9 M4</b> <b>23.37 dBV/m</b>

**Cursor:**

Total = 23.63 dBV/m

E Category: M4

Location: -2, 25, 7.7 mm



0 dB = 15.19 V/m = 23.63 dBV/m

### #15\_HAC\_E\_LTE Band 41\_20M\_QPSK\_1\_0\_Ch41055

Communication System: LTE-TDD (SC-FDMA, 1 RB, 20 MHz, QPSK); Frequency: 2636.5 MHz; Duty Cycle: 1:8.33681

Medium: Air Medium parameters used:  $\sigma = 0$  S/m,  $\epsilon_r = 1$ ;  $\rho = 0$  kg/m<sup>3</sup>

Ambient Temperature : 23.5 °C

DASY5 Configuration:

- Probe: EF3DV3 - SN4047; ConvF(1, 1, 1) @ 2636.5 MHz; Calibrated: 2019/1/30
- Sensor-Surface: (Fix Surface)
- Electronics: DAE4 Sn854; Calibrated: 2018/6/14
- Phantom: HAC Test Arch with AMCC; Type: SD HAC P01 BA;
- Measurement SW: DASY52, Version 52.10 (1); SEMCAD X Version 14.6.11 (7439)

### E Scan - ER3D: 15 mm from Probe Center to the Device/Hearing Aid Compatibility Test (101x101x1): Interpolated grid: dx=0.5000 mm, dy=0.5000 mm

Device Reference Point: 0, 0, -6.3 mm

Reference Value = 13.78 V/m; Power Drift = -0.02 dB

Applied MIF = -1.62 dB

RF audio interference level = 23.72 dBV/m

**Emission category: M4**

MIF scaled E-field

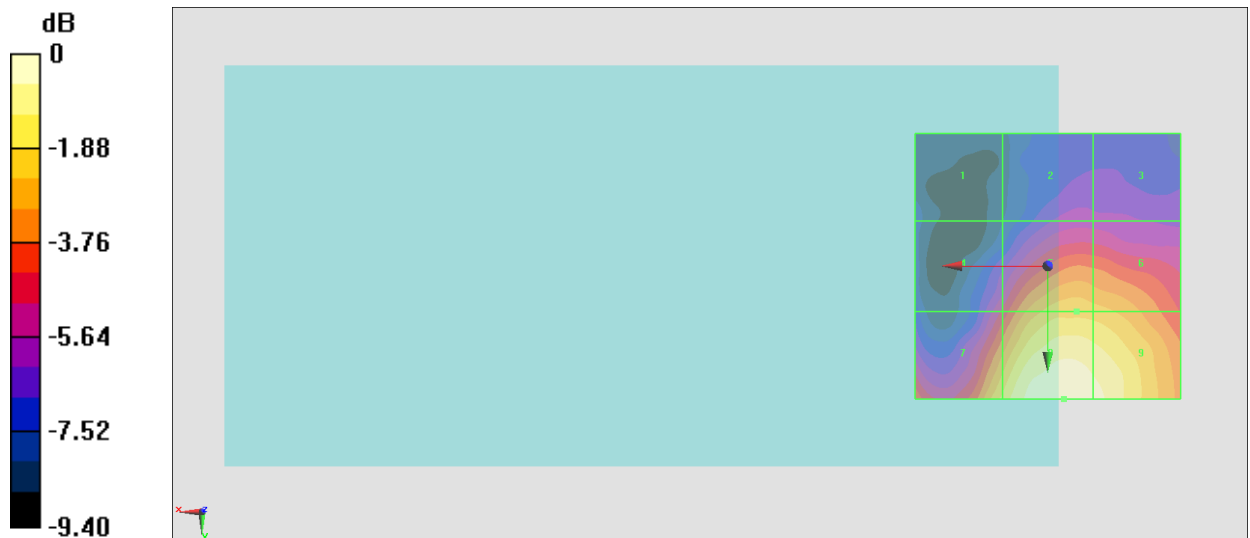
Grid 1 <b>M4</b> <b>16.09 dBV/m</b>	Grid 2 <b>M4</b> <b>17.87 dBV/m</b>	Grid 3 <b>M4</b> <b>17.78 dBV/m</b>
Grid 4 <b>M4</b> <b>18.89 dBV/m</b>	Grid 5 <b>M4</b> <b>21.64 dBV/m</b>	Grid 6 <b>M4</b> <b>21.54 dBV/m</b>
Grid 7 <b>M4</b> <b>22.06 dBV/m</b>	Grid 8 <b>M4</b> <b>23.72 dBV/m</b>	Grid 9 <b>M4</b> <b>23.38 dBV/m</b>

**Cursor:**

Total = 23.72 dBV/m

E Category: M4

Location: -3, 25, 7.7 mm



0 dB = 15.35 V/m = 23.72 dBV/m

### #16\_HAC\_E\_LTE Band 41\_20M\_QPSK\_1\_0\_Ch41490

Communication System: LTE-TDD (SC-FDMA, 1 RB, 20 MHz, QPSK); Frequency: 2680 MHz; Duty Cycle: 1:8.33681

Medium: Air Medium parameters used:  $\sigma = 0$  S/m,  $\epsilon_r = 1$ ;  $\rho = 0$  kg/m<sup>3</sup>

Ambient Temperature : 23.5 °C

**DASY5 Configuration:**

- Probe: EF3DV3 - SN4047; ConvF(1, 1, 1) @ 2680 MHz; Calibrated: 2019/1/30
- Sensor-Surface: (Fix Surface)
- Electronics: DAE4 Sn854; Calibrated: 2018/6/14
- Phantom: HAC Test Arch with AMCC; Type: SD HAC P01 BA;
- Measurement SW: DASY52, Version 52.10 (1); SEMCAD X Version 14.6.11 (7439)

**E Scan - ER3D: 15 mm from Probe Center to the Device/Hearing Aid Compatibility Test (101x101x1):** Interpolated grid: dx=0.5000 mm, dy=0.5000 mm

Device Reference Point: 0, 0, -6.3 mm

Reference Value = 13.78 V/m; Power Drift = 0.03 dB

Applied MIF = -1.62 dB

RF audio interference level = 23.90 dBV/m

**Emission category: M4**

MIF scaled E-field

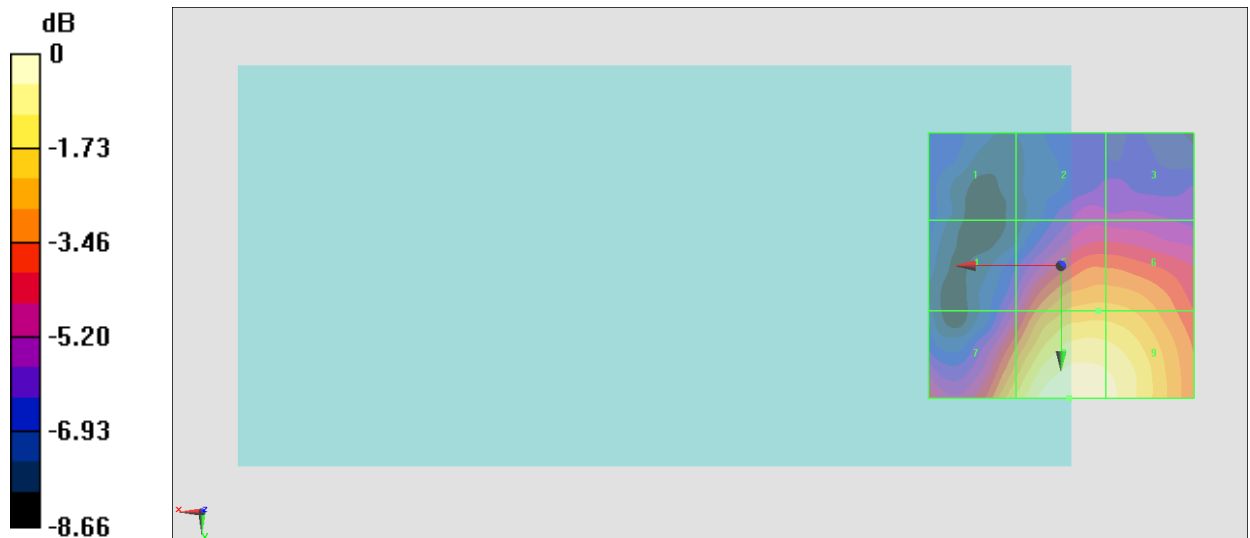
<b>Grid 1 M4</b> <b>17.41 dBV/m</b>	<b>Grid 2 M4</b> <b>18.64 dBV/m</b>	<b>Grid 3 M4</b> <b>18.47 dBV/m</b>
<b>Grid 4 M4</b> <b>18.86 dBV/m</b>	<b>Grid 5 M4</b> <b>21.87 dBV/m</b>	<b>Grid 6 M4</b> <b>21.85 dBV/m</b>
<b>Grid 7 M4</b> <b>22.32 dBV/m</b>	<b>Grid 8 M4</b> <b>23.9 dBV/m</b>	<b>Grid 9 M4</b> <b>23.58 dBV/m</b>

**Cursor:**

Total = 23.90 dBV/m

E Category: M4

Location: -1.5, 25, 7.7 mm



0 dB = 15.67 V/m = 23.90 dBV/m

### #17\_HAC\_E\_WLAN2.4GHz\_802.11g\_6Mbps\_Ch1

Communication System: 802.11g WiFi 2.4 GHz (DSSS/OFDM, 54 Mbps); Frequency: 2412 MHz; Duty Cycle: 1:12.5893

Medium: Air Medium parameters used:  $\sigma = 0$  S/m,  $\epsilon_r = 1$ ;  $\rho = 0$  kg/m<sup>3</sup>

Ambient Temperature : 23.5 °C

DASY5 Configuration:

- Probe: EF3DV3 - SN4047; ConvF(1, 1, 1) @ 2412 MHz; Calibrated: 2019/1/30
- Sensor-Surface: (Fix Surface)
- Electronics: DAE4 Sn854; Calibrated: 2018/6/14
- Phantom: HAC Test Arch with AMCC; Type: SD HAC P01 BA;
- Measurement SW: DASY52, Version 52.10 (1); SEMCAD X Version 14.6.11 (7439)

### E Scan - ER3D: 15 mm from Probe Center to the Device/Hearing Aid Compatibility Test (101x101x1): Interpolated grid: dx=0.5000 mm, dy=0.5000 mm

Device Reference Point: 0, 0, -6.3 mm

Reference Value = 47.69 V/m; Power Drift = -0.02 dB

Applied MIF = 0.12 dB

RF audio interference level = 31.21 dBV/m

**Emission category: M3**

MIF scaled E-field

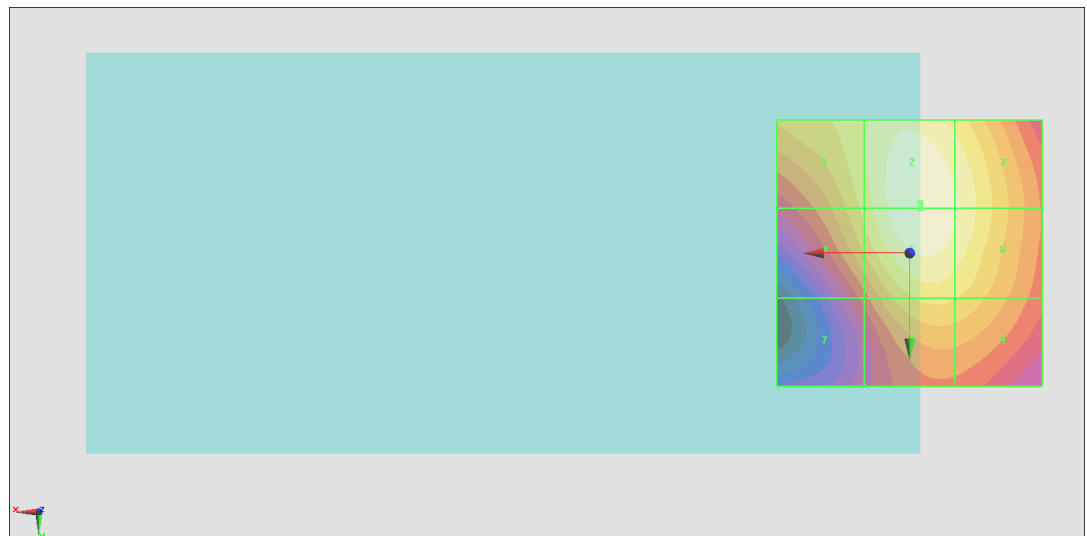
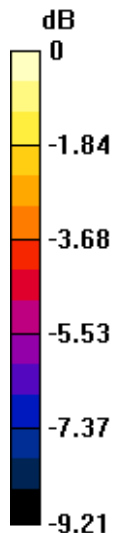
Grid 1 <b>M4</b> <b>29.95 dBV/m</b>	Grid 2 <b>M3</b> <b>31.21 dBV/m</b>	Grid 3 <b>M3</b> <b>30.68 dBV/m</b>
Grid 4 <b>M4</b> <b>29.6 dBV/m</b>	Grid 5 <b>M3</b> <b>31.21 dBV/m</b>	Grid 6 <b>M3</b> <b>30.68 dBV/m</b>
Grid 7 <b>M4</b> <b>27.26 dBV/m</b>	Grid 8 <b>M4</b> <b>29.56 dBV/m</b>	Grid 9 <b>M4</b> <b>29.41 dBV/m</b>

**Cursor:**

Total = 31.21 dBV/m

E Category: M3

Location: -2, -9.5, 7.7 mm



0 dB = 36.36 V/m = 31.21 dBV/m

### #18\_HAC\_E\_WLAN2.4GHz\_802.11g\_6Mbps\_Ch6

Communication System: 802.11g WiFi 2.4 GHz (DSSS/OFDM, 54 Mbps); Frequency: 2437 MHz; Duty Cycle: 1:12.5893

Medium: Air Medium parameters used:  $\sigma = 0$  S/m,  $\epsilon_r = 1$ ;  $\rho = 0$  kg/m<sup>3</sup>

Ambient Temperature : 23.5 °C

DASY5 Configuration:

- Probe: EF3DV3 - SN4047; ConvF(1, 1, 1) @ 2437 MHz; Calibrated: 2019/1/30
- Sensor-Surface: (Fix Surface)
- Electronics: DAE4 Sn854; Calibrated: 2018/6/14
- Phantom: HAC Test Arch with AMCC; Type: SD HAC P01 BA;
- Measurement SW: DASY52, Version 52.10 (1); SEMCAD X Version 14.6.11 (7439)

### E Scan - ER3D: 15 mm from Probe Center to the Device/Hearing Aid Compatibility Test (101x101x1): Interpolated grid: dx=0.5000 mm, dy=0.5000 mm

Device Reference Point: 0, 0, -6.3 mm

Reference Value = 45.21 V/m; Power Drift = -0.05 dB

Applied MIF = 0.12 dB

RF audio interference level = 30.52 dBV/m

**Emission category: M3**

MIF scaled E-field

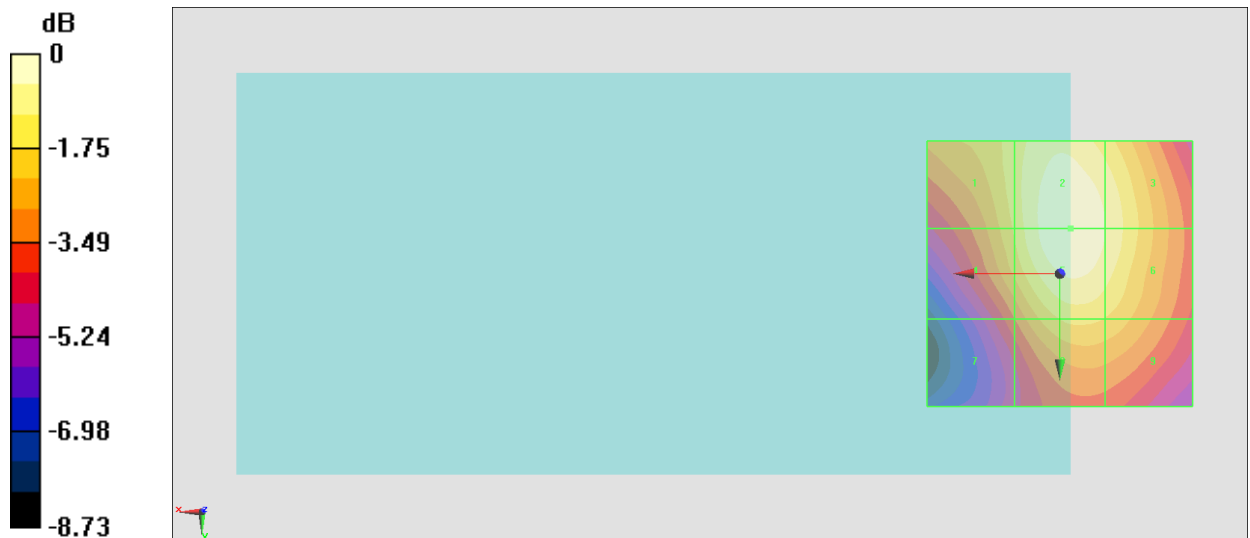
Grid 1 <b>M4</b> <b>29.11 dBV/m</b>	Grid 2 <b>M3</b> <b>30.52 dBV/m</b>	Grid 3 <b>M4</b> <b>29.94 dBV/m</b>
Grid 4 <b>M4</b> <b>28.89 dBV/m</b>	Grid 5 <b>M3</b> <b>30.52 dBV/m</b>	Grid 6 <b>M4</b> <b>29.94 dBV/m</b>
Grid 7 <b>M4</b> <b>27.04 dBV/m</b>	Grid 8 <b>M4</b> <b>28.95 dBV/m</b>	Grid 9 <b>M4</b> <b>28.75 dBV/m</b>

**Cursor:**

Total = 30.52 dBV/m

E Category: M3

Location: -2, -8.5, 7.7 mm



0 dB = 33.57 V/m = 30.52 dBV/m

### #19\_HAC\_E\_WLAN2.4GHz\_802.11g\_6Mbps\_Ch11

Communication System: 802.11g WiFi 2.4 GHz (DSSS/OFDM, 54 Mbps); Frequency: 2462 MHz; Duty Cycle: 1:12.5893

Medium: Air Medium parameters used:  $\sigma = 0$  S/m,  $\epsilon_r = 1$ ;  $\rho = 0$  kg/m<sup>3</sup>

Ambient Temperature : 23.5 °C

DASY5 Configuration:

- Probe: EF3DV3 - SN4047; ConvF(1, 1, 1) @ 2462 MHz; Calibrated: 2019/1/30
- Sensor-Surface: (Fix Surface)
- Electronics: DAE4 Sn854; Calibrated: 2018/6/14
- Phantom: HAC Test Arch with AMCC; Type: SD HAC P01 BA;
- Measurement SW: DASY52, Version 52.10 (1); SEMCAD X Version 14.6.11 (7439)

### E Scan - ER3D: 15 mm from Probe Center to the Device/Hearing Aid Compatibility Test (101x101x1): Interpolated grid: dx=0.5000 mm, dy=0.5000 mm

Device Reference Point: 0, 0, -6.3 mm

Reference Value = 46.08 V/m; Power Drift = -0.04 dB

Applied MIF = 0.12 dB

RF audio interference level = 30.73 dBV/m

**Emission category: M3**

MIF scaled E-field

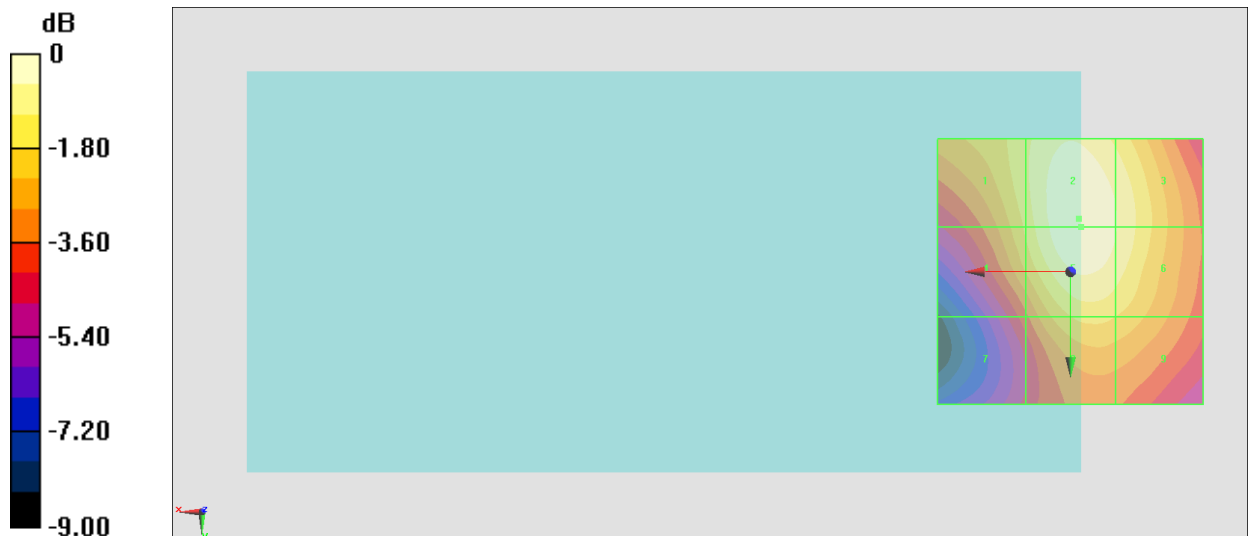
Grid 1 <b>M4</b> <b>29.42 dBV/m</b>	Grid 2 <b>M3</b> <b>30.73 dBV/m</b>	Grid 3 <b>M3</b> <b>30.17 dBV/m</b>
Grid 4 <b>M4</b> <b>29.05 dBV/m</b>	Grid 5 <b>M3</b> <b>30.72 dBV/m</b>	Grid 6 <b>M3</b> <b>30.17 dBV/m</b>
Grid 7 <b>M4</b> <b>26.96 dBV/m</b>	Grid 8 <b>M4</b> <b>29.13 dBV/m</b>	Grid 9 <b>M4</b> <b>28.93 dBV/m</b>

**Cursor:**

Total = 30.73 dBV/m

E Category: M3

Location: -1.5, -10, 7.7 mm



0 dB = 34.40 V/m = 30.73 dBV/m