

Test Laboratory: Sporton International Inc.

#### Device Under Test Properties

Manufacturer	Dimensions [mm]	IMEI	DUT Type
	160.0 x 75.0 x 15.0		5G NR MOD

#### Exposure Conditions

Phantom Section	Position, Test Distance [mm]	Frequency [MHz]	Conversion Factor
5G	EDGE TOP, 5.00	27900.0	1.0

#### Hardware Setup

Phantom	Medium	Probe, Calibration Date	DAE, Calibration Date
5G Cover - xxxx	Air -	EUmmWV3 - SN9390, 2018-06-28	DAE4 Sn1399, 2018-11-16

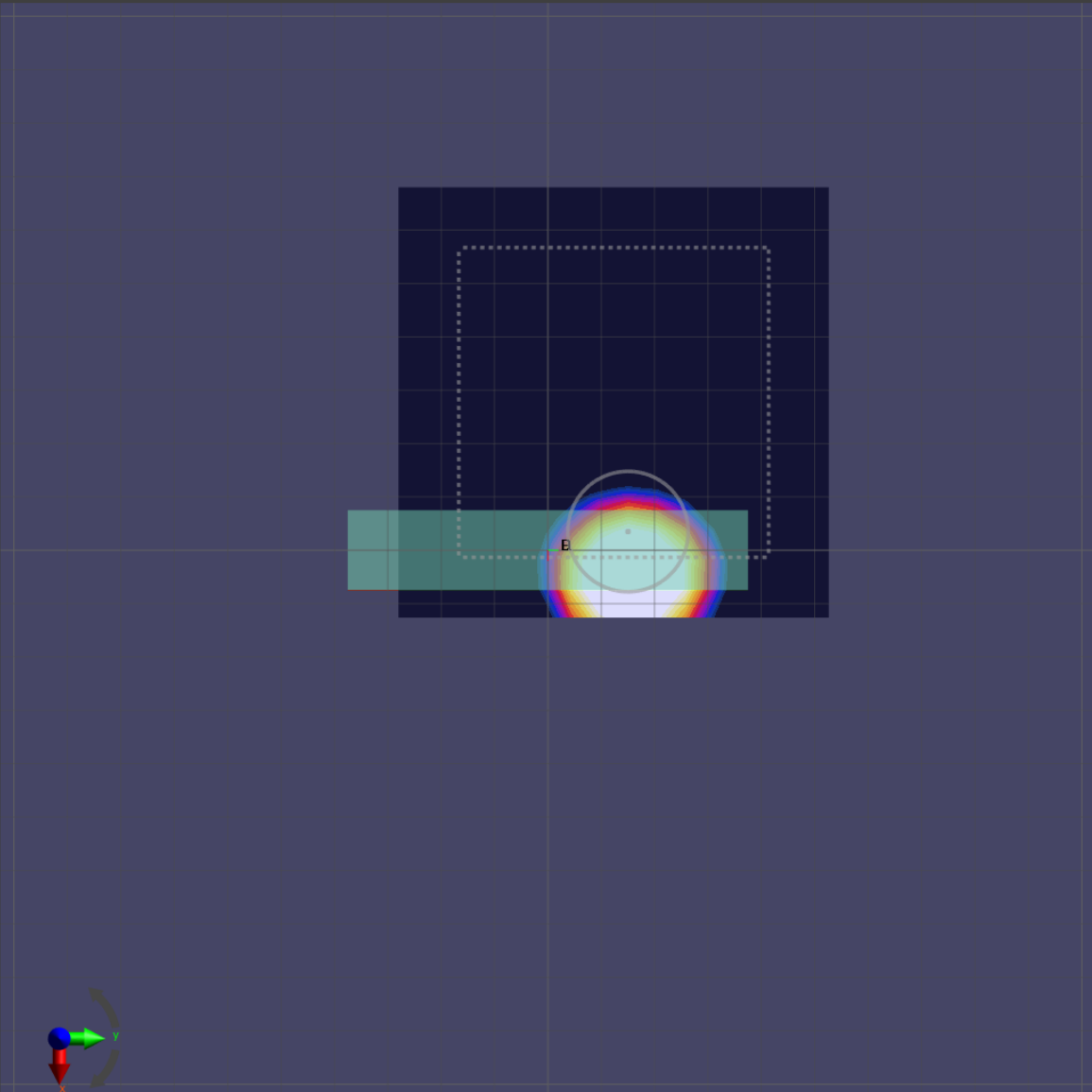
#### Scans Setup

Grid Extents [mm]	40.0 x 70.0
Grid Steps [lambda]	0.25 x 0.25
Sensor Surface [mm]	5.0

#### Measurement Results

Date	2019-04-18, 10:37
Avg. Area [cm <sup>2</sup> ]	4.00
S <sub>avg inc</sub> [W/m <sup>2</sup> ]	4.11
S <sub>avg tot</sub> [W/m <sup>2</sup> ]	4.60
S <sub>peak</sub> [W/m <sup>2</sup> ]	15.6
E <sub>peak</sub> [V/m]	84.3
H <sub>peak</sub> [A/m]	0.187
Power Drift [dB]	-0.09

Averaged [4.0 cm<sup>2</sup>] |Re{S}|(x,y,z,f0) [dB(4.6W/m<sup>2</sup>)]



Test Laboratory: Sporton International Inc.

#### Device Under Test Properties

Manufacturer	Dimensions [mm]	IMEI	DUT Type
	160.0 x 75.0 x 15.0		5G NR MOD

#### Exposure Conditions

Phantom Section	Position, Test Distance [mm]	Frequency [MHz]	Conversion Factor
5G	BACK, 5.00	38500.0	1.0

#### Hardware Setup

Phantom	Medium	Probe, Calibration Date	DAE, Calibration Date
5G Cover - xxxx	Air -	EUmmWV3 - SN9390, 2018-06-28	DAE4 Sn1399, 2018-11-16

#### Scans Setup

Grid Extents [mm]	40.0 x 60.0
Grid Steps [lambda]	0.25 x 0.25
Sensor Surface [mm]	5.0

#### Measurement Results

Date	2019-04-18, 20:01
Avg. Area [cm <sup>2</sup> ]	4.00
S <sub>avg inc</sub> [W/m <sup>2</sup> ]	2.83
S <sub>avg tot</sub> [W/m <sup>2</sup> ]	3.25
S <sub>peak</sub> [W/m <sup>2</sup> ]	18.7
E <sub>peak</sub> [V/m]	92.4
H <sub>peak</sub> [A/m]	0.221
Power Drift [dB]	0.18

Averaged [4.0 cm<sup>2</sup>] |Re{S}|(x,y,z,f0) [dB(3.25W/m<sup>2</sup>)]

0



-20

