

04_WCDMA Band II_RMC12.2Kbps_Right Cheek_0mm_Ch9538

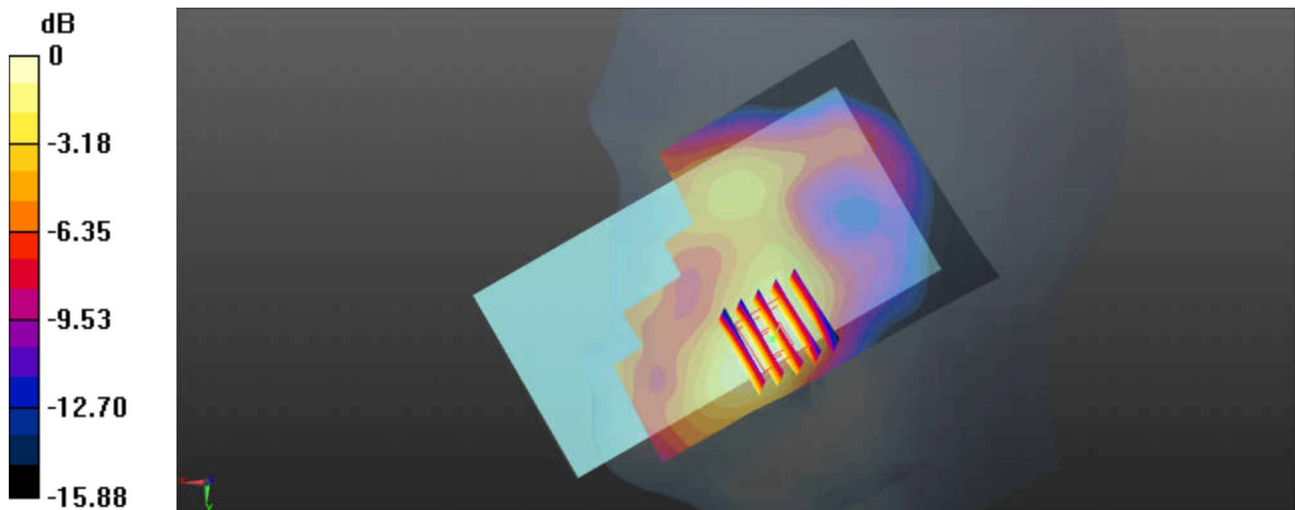
Communication System: UID 0, UMTS (0); Frequency: 1907.6 MHz; Duty Cycle: 1:1
 Medium: HSL_1900 Medium parameters used: $f = 1907.6 \text{ MHz}$; $\sigma = 1.409 \text{ S/m}$; $\epsilon_r = 40.548$;
 $\rho = 1000 \text{ kg/m}^3$
 Ambient Temperature : $23.3 \text{ }^\circ\text{C}$; Liquid Temperature : $22.8 \text{ }^\circ\text{C}$

DASY5 Configuration:

- Probe: EX3DV4 - SN3954; ConvF(8.41, 8.41, 8.41); Calibrated: 2018.1.31;
- Sensor-Surface: 2mm (Mechanical Surface Detection)
- Electronics: DAE4 Sn1279; Calibrated: 2018.1.3
- Phantom: SAM3; Type: SAM; Serial: TP-1839
- Measurement SW: DASY52, Version 52.8 (8); SEMCAD X Version 14.6.10 (7331)

Ch9538/Area Scan (71x121x1): Interpolated grid: $dx=1.500 \text{ mm}$, $dy=1.500 \text{ mm}$
 Maximum value of SAR (interpolated) = 0.280 W/kg

Ch9538/Zoom Scan (5x5x7)/Cube 0: Measurement grid: $dx=8\text{mm}$, $dy=8\text{mm}$, $dz=5\text{mm}$
 Reference Value = 4.778 V/m ; Power Drift = 0.01 dB
 Peak SAR (extrapolated) = 0.318 W/kg
SAR(1 g) = 0.218 W/kg ; SAR(10 g) = 0.138 W/kg
 Maximum value of SAR (measured) = 0.272 W/kg



0 dB = $0.280 \text{ W/kg} = -5.53 \text{ dBW/kg}$

05_CDMA2000 BC0_RC3 SO55_Left Cheek_0mm_Ch777

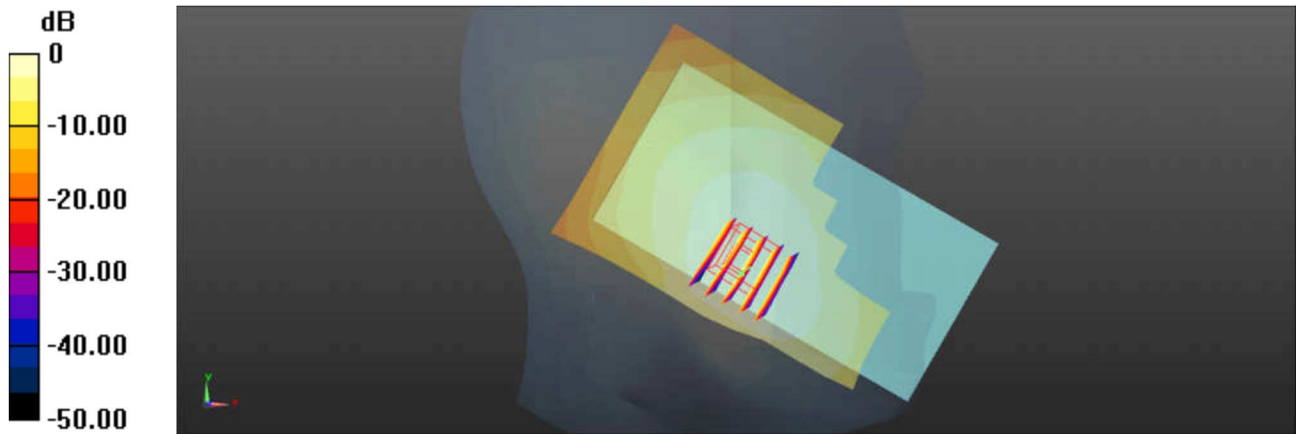
Communication System: UID 0, CDMA2000 (0); Frequency: 848.31 MHz; Duty Cycle: 1:1
 Medium: HSL_835 Medium parameters used: $f = 848.31$ MHz; $\sigma = 0.92$ S/m; $\epsilon_r = 42.04$;
 $\rho = 1000$ kg/m³
 Ambient Temperature : 23.2 °C; Liquid Temperature : 22.6 °C

DASY5 Configuration:

- Probe: EX3DV4 - SN3954; ConvF(10.2, 10.2, 10.2); Calibrated: 2018.1.31;
- Sensor-Surface: 2mm (Mechanical Surface Detection)
- Electronics: DAE4 Sn1279; Calibrated: 2018.1.3
- Phantom: SAM1; Type: SAM; Serial: TP-1842
- Measurement SW: DASY52, Version 52.8 (8); SEMCAD X Version 14.6.10 (7331)

Ch777/Area Scan (71x121x1): Interpolated grid: dx=1.500 mm, dy=1.500 mm
 Maximum value of SAR (interpolated) = 0.452 W/kg

Ch777/Zoom Scan (5x5x7)/Cube 0: Measurement grid: dx=8mm, dy=8mm, dz=5mm
 Reference Value = 8.948 V/m; Power Drift = 0.04 dB
 Peak SAR (extrapolated) = 0.490 W/kg
SAR(1 g) = 0.386 W/kg; SAR(10 g) = 0.298 W/kg
 Maximum value of SAR (measured) = 0.440 W/kg



0 dB = 0.452 W/kg = -3.45 dBW/kg

06_CDMA2000 BC1_RC3 SO55_Right Cheek_0mm_Ch1175

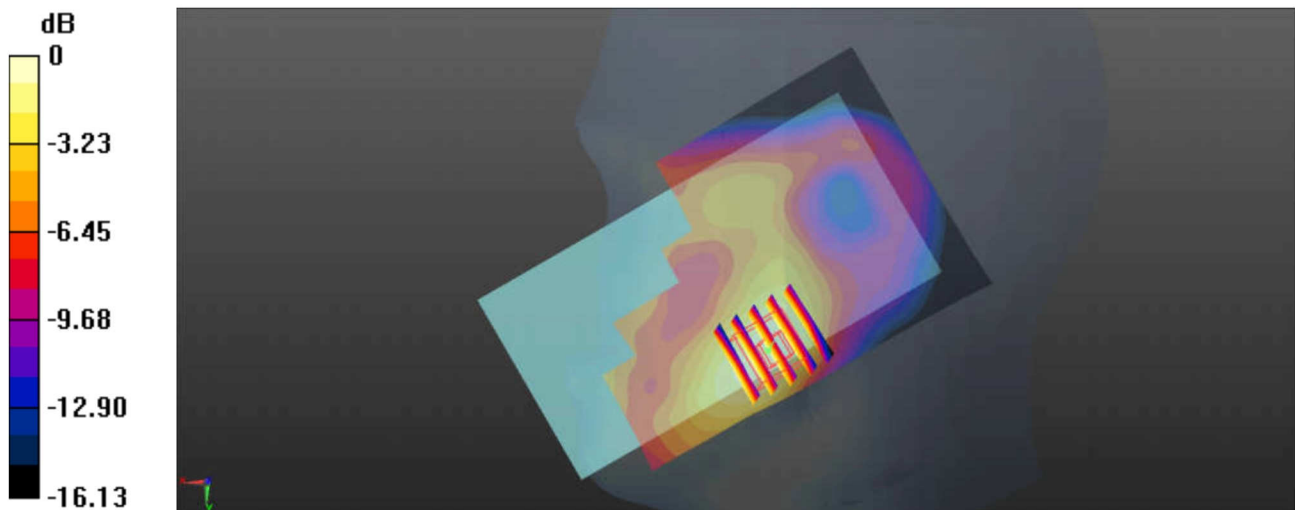
Communication System: UID 0, CDMA2000 (0); Frequency: 1908.75 MHz; Duty Cycle: 1:1
 Medium: HSL_1900 Medium parameters used: $f = 1908.75$ MHz; $\sigma = 1.41$ S/m; $\epsilon_r = 40.549$;
 $\rho = 1000$ kg/m³
 Ambient Temperature : 23.3 °C; Liquid Temperature : 22.8 °C

DASY5 Configuration:

- Probe: EX3DV4 - SN3954; ConvF(8.41, 8.41, 8.41); Calibrated: 2018.1.31;
- Sensor-Surface: 2mm (Mechanical Surface Detection)
- Electronics: DAE4 Sn1279; Calibrated: 2018.1.3
- Phantom: SAM3; Type: SAM; Serial: TP-1839
- Measurement SW: DASY52, Version 52.8 (8); SEMCAD X Version 14.6.10 (7331)

Ch1175/Area Scan (71x121x1): Interpolated grid: dx=1.500 mm, dy=1.500 mm
 Maximum value of SAR (interpolated) = 0.297 W/kg

Ch1175/Zoom Scan (5x5x7)/Cube 0: Measurement grid: dx=8mm, dy=8mm, dz=5mm
 Reference Value = 4.461 V/m; Power Drift = 0.04 dB
 Peak SAR (extrapolated) = 0.340 W/kg
SAR(1 g) = 0.225 W/kg; SAR(10 g) = 0.141 W/kg
 Maximum value of SAR (measured) = 0.273 W/kg



0 dB = 0.297 W/kg = -5.27 dBW/kg

07_LTE Band 13_10M_QPSK_1RB_0Offset_Left Cheek_0mm_Ch23230

Communication System: UID 0, FDD_LTE (0); Frequency: 782 MHz; Duty Cycle: 1:1
Medium: HSL_750 Medium parameters used: $f = 782 \text{ MHz}$; $\sigma = 0.858 \text{ S/m}$; $\epsilon_r = 42.896$;
 $\rho = 1000 \text{ kg/m}^3$

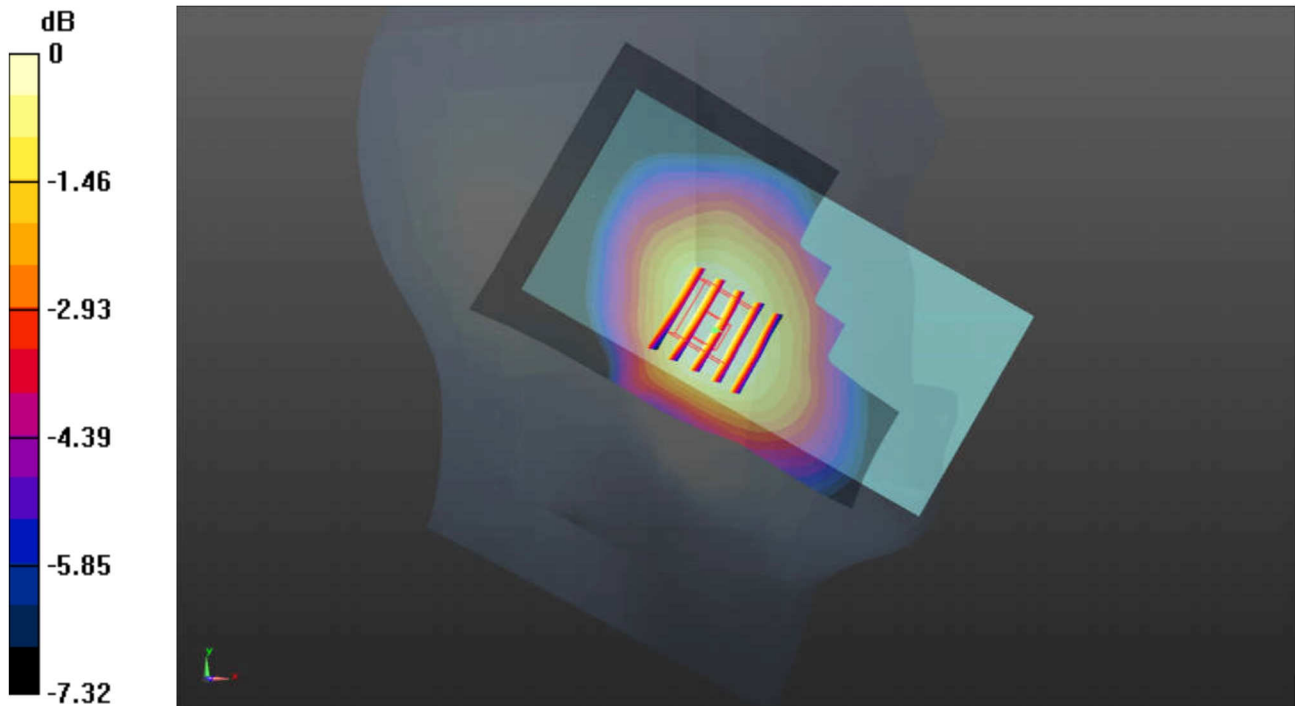
Ambient Temperature : 23.2 °C; Liquid Temperature : 22.6 °C

DASY5 Configuration:

- Probe: EX3DV4 - SN3954; ConvF(10.72, 10.72, 10.72); Calibrated: 2018.1.31;
- Sensor-Surface: 2mm (Mechanical Surface Detection)
- Electronics: DAE4 Sn1279; Calibrated: 2018.1.3
- Phantom: SAM1; Type: SAM; Serial: TP-1842
- Measurement SW: DASY52, Version 52.8 (8); SEMCAD X Version 14.6.10 (7331)

Ch23230/Area Scan (71x121x1): Interpolated grid: $dx=1.500 \text{ mm}$, $dy=1.500 \text{ mm}$
Maximum value of SAR (interpolated) = 0.229 W/kg

Ch23230/Zoom Scan (5x5x7)/Cube 0: Measurement grid: $dx=8\text{mm}$, $dy=8\text{mm}$, $dz=5\text{mm}$
Reference Value = 7.165 V/m; Power Drift = 0.02 dB
Peak SAR (extrapolated) = 0.246 W/kg
SAR(1 g) = 0.208 W/kg; SAR(10 g) = 0.167 W/kg
Maximum value of SAR (measured) = 0.230 W/kg



0 dB = 0.229 W/kg = -6.40 dBW/kg

08_LTE Band 5_10M_QPSK_1RB_25Offset_Left Cheek_0mm_Ch20525

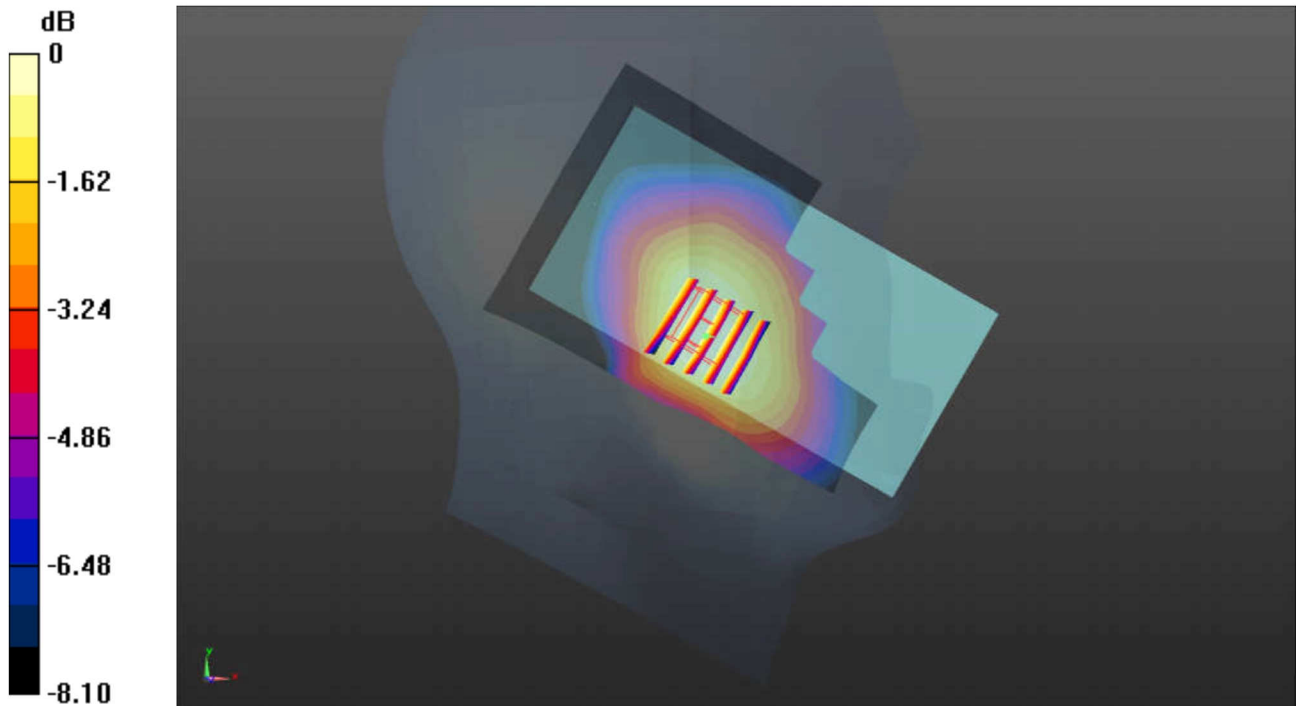
Communication System: UID 0, FDD_LTE (0); Frequency: 836.5 MHz; Duty Cycle: 1:1
 Medium: HSL_835 Medium parameters used : $f = 836.5$ MHz; $\sigma = 0.909$ S/m; $\epsilon_r = 42.186$;
 $\rho = 1000$ kg/m³
 Ambient Temperature : 23.2 °C; Liquid Temperature : 22.6 °C

DASY5 Configuration:

- Probe: EX3DV4 - SN3954; ConvF(10.2, 10.2, 10.2); Calibrated: 2018.1.31;
- Sensor-Surface: 2mm (Mechanical Surface Detection)
- Electronics: DAE4 Sn1279; Calibrated: 2018.1.3
- Phantom: SAM1; Type: SAM; Serial: TP-1842
- Measurement SW: DASY52, Version 52.8 (8); SEMCAD X Version 14.6.10 (7331)

Ch20525/Area Scan (71x121x1): Interpolated grid: dx=1.500 mm, dy=1.500 mm
 Maximum value of SAR (interpolated) = 0.290 W/kg

Ch20525/Zoom Scan (5x5x7)/Cube 0: Measurement grid: dx=8mm, dy=8mm, dz=5mm
 Reference Value = 7.979 V/m; Power Drift = 0.03 dB
 Peak SAR (extrapolated) = 0.318 W/kg
SAR(1 g) = 0.259 W/kg; SAR(10 g) = 0.203 W/kg
 Maximum value of SAR (measured) = 0.291 W/kg



0 dB = 0.290 W/kg = -5.38 dBW/kg

09_LTE Band 66_20M_QPSK_1RB_0Offset_Right Cheek_0mm_Ch132572

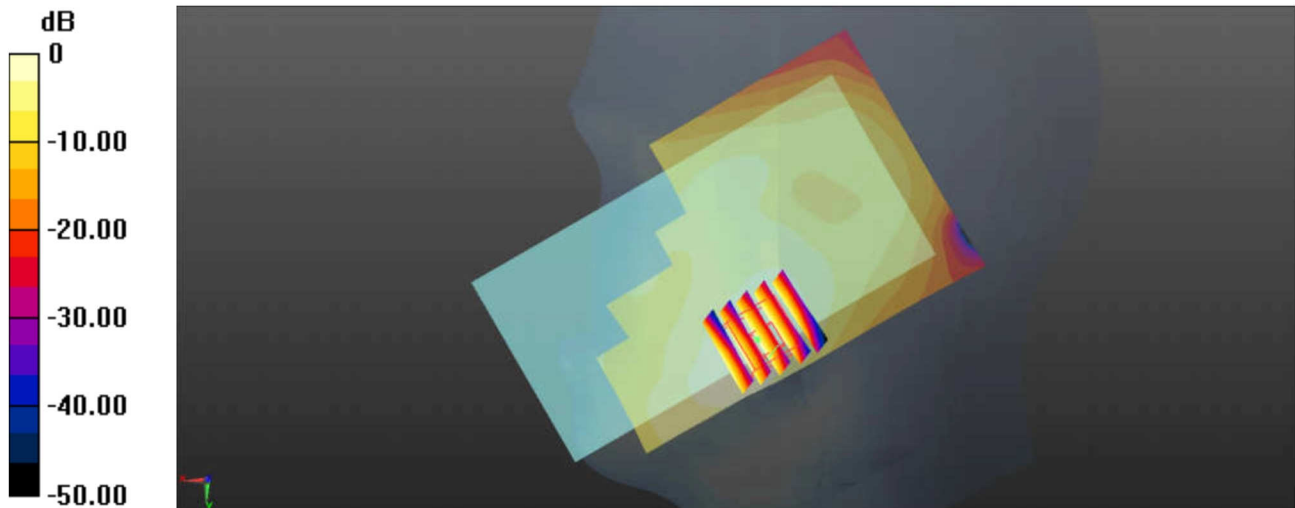
Communication System: UID 0, FDD_LTE (0); Frequency: 1770 MHz;Duty Cycle: 1:1
Medium: HSL_1750 Medium parameters used: $f = 1770$ MHz; $\sigma = 1.343$ S/m; $\epsilon_r = 39.111$;
 $\rho = 1000$ kg/m³
Ambient Temperature : 23.3 °C; Liquid Temperature : 22.7 °C

DASY5 Configuration:

- Probe: EX3DV4 - SN3954; ConvF(8.65, 8.65, 8.65); Calibrated: 2018.1.31;
- Sensor-Surface: 2mm (Mechanical Surface Detection)
- Electronics: DAE4 Sn1279; Calibrated: 2018.1.3
- Phantom: SAM3; Type: SAM; Serial: TP-1839
- Measurement SW: DASY52, Version 52.8 (8); SEMCAD X Version 14.6.10 (7331)

Ch132572/Area Scan (71x121x1): Interpolated grid: dx=1.500 mm, dy=1.500 mm
Maximum value of SAR (interpolated) = 0.561 W/kg

Ch132572/Zoom Scan (5x5x7)/Cube 0: Measurement grid: dx=8mm, dy=8mm, dz=5mm
Reference Value = 8.141 V/m; Power Drift = 0.07 dB
Peak SAR (extrapolated) = 0.662 W/kg
SAR(1 g) = 0.463 W/kg; SAR(10 g) = 0.305 W/kg
Maximum value of SAR (measured) = 0.533 W/kg



0 dB = 0.561 W/kg = -2.51 dBW/kg

10_LTE Band 2_20M_QPSK_1RB_0Offset_Right Cheek_0mm_Ch19100

Communication System: UID 0, FDD_LTE (0); Frequency: 1900 MHz; Duty Cycle: 1:1
Medium: HSL_1900 Medium parameters used: $f = 1900$ MHz; $\sigma = 1.4$ S/m; $\epsilon_r = 40.573$;
 $\rho = 1000$ kg/m³

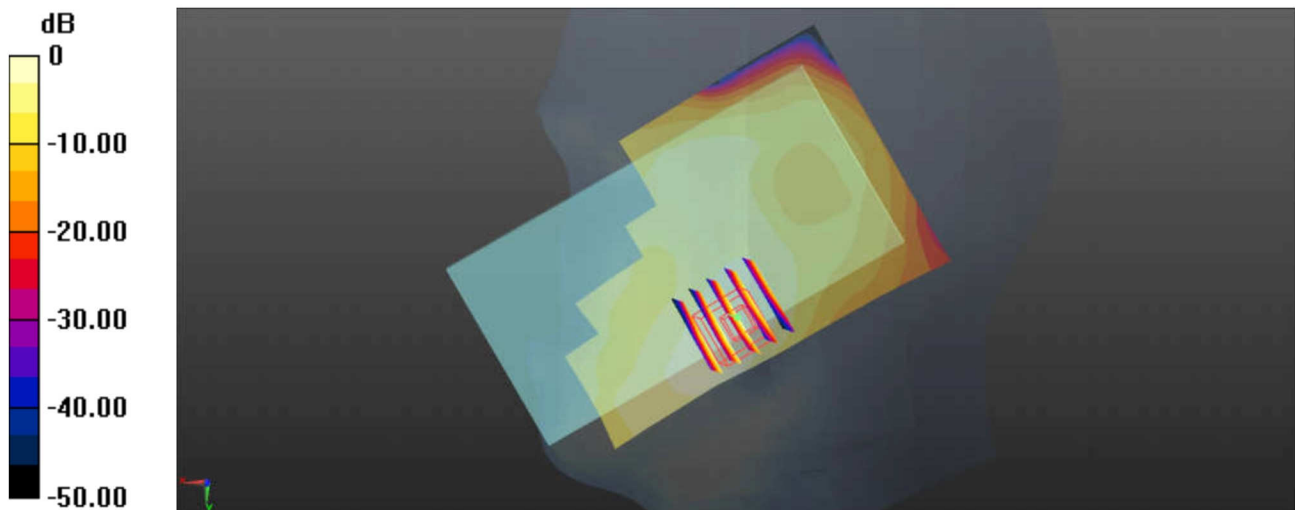
Ambient Temperature : 23.3 °C; Liquid Temperature : 22.8 °C

DASY5 Configuration:

- Probe: EX3DV4 - SN3954; ConvF(8.41, 8.41, 8.41); Calibrated: 2018.1.31;
- Sensor-Surface: 2mm (Mechanical Surface Detection)
- Electronics: DAE4 Sn1279; Calibrated: 2018.1.3
- Phantom: SAM3; Type: SAM; Serial: TP-1839
- Measurement SW: DASY52, Version 52.8 (8); SEMCAD X Version 14.6.10 (7331)

Ch19100/Area Scan (71x121x1): Interpolated grid: $dx=1.500$ mm, $dy=1.500$ mm
Maximum value of SAR (interpolated) = 0.331 W/kg

Ch19100/Zoom Scan (5x5x7)/Cube 0: Measurement grid: $dx=8$ mm, $dy=8$ mm, $dz=5$ mm
Reference Value = 5.173 V/m; Power Drift = 0.03 dB
Peak SAR (extrapolated) = 0.410 W/kg
SAR(1 g) = 0.271 W/kg; SAR(10 g) = 0.169 W/kg
Maximum value of SAR (measured) = 0.347 W/kg



0 dB = 0.331 W/kg = -4.80 dBW/kg

11_LTE Band 7_20M_QPSK_1RB_0Offset_Right Cheek_0mm_Ch20850

Communication System: UID 0, FDD_LTE (0); Frequency: 2510 MHz;Duty Cycle: 1:1
 Medium: HSL_2600 Medium parameters used: $f = 2510 \text{ MHz}$; $\sigma = 1.892 \text{ S/m}$; $\epsilon_r = 38.1$; $\rho = 1000 \text{ kg/m}^3$

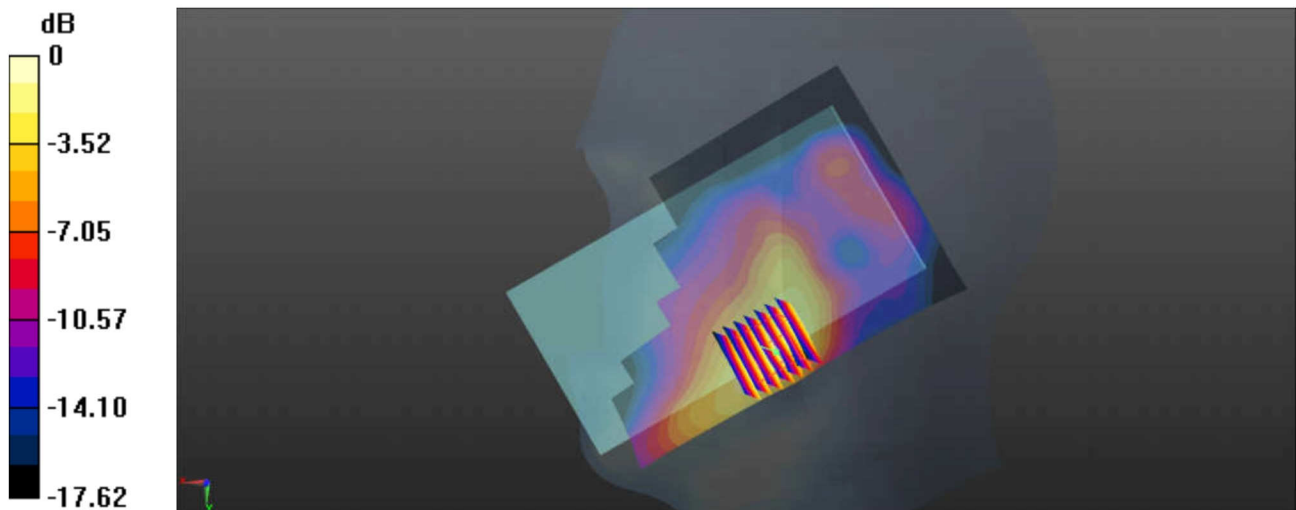
Ambient Temperature : 23.2 °C; Liquid Temperature : 22.8 °C

DASY5 Configuration:

- Probe: EX3DV4 - SN3954; ConvF(7.31, 7.31, 7.31); Calibrated: 2018.1.31;
- Sensor-Surface: 2mm (Mechanical Surface Detection)
- Electronics: DAE4 Sn1279; Calibrated: 2018.1.3
- Phantom: SAM1; Type: SAM; Serial: TP-1842
- Measurement SW: DASY52, Version 52.8 (8); SEMCAD X Version 14.6.10 (7331)

Ch20850/Area Scan (91x151x1): Interpolated grid: $dx=1.200 \text{ mm}$, $dy=1.200 \text{ mm}$
 Maximum value of SAR (interpolated) = 0.920 W/kg

Ch20850/Zoom Scan (7x7x7)/Cube 0: Measurement grid: $dx=5\text{mm}$, $dy=5\text{mm}$, $dz=5\text{mm}$
 Reference Value = 8.304 V/m; Power Drift = 0.09 dB
 Peak SAR (extrapolated) = 1.18 W/kg
SAR(1 g) = 0.619 W/kg; SAR(10 g) = 0.331 W/kg
 Maximum value of SAR (measured) = 0.843 W/kg



0 dB = 0.920 W/kg = -0.36 dBW/kg

12_WLAN2.4GHz_802.11b 1Mbps_Right Cheek_0mm_Ch11

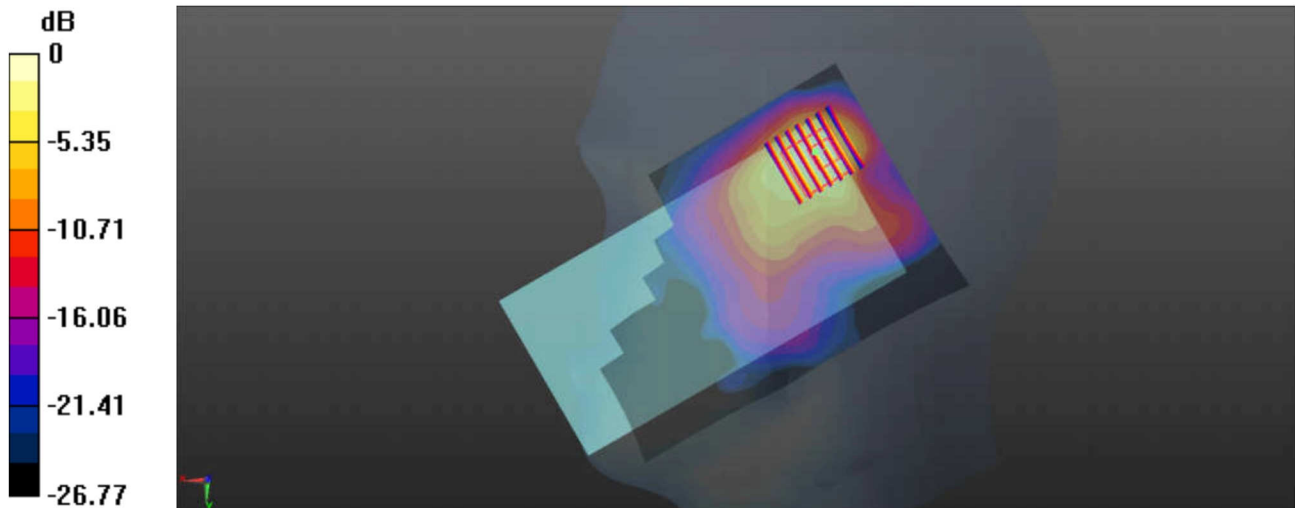
Communication System: UID 0, WIFI (0); Frequency: 2462 MHz; Duty Cycle: 1:1
Medium: HSL_2450 Medium parameters used: $f = 2462$ MHz; $\sigma = 1.837$ S/m; $\epsilon_r = 38.289$;
 $\rho = 1000$ kg/m³
Ambient Temperature : 23.2 °C; Liquid Temperature : 22.7 °C

DASY5 Configuration:

- Probe: EX3DV4 - SN3954; ConvF(7.49, 7.49, 7.49); Calibrated: 2018.1.31;
- Sensor-Surface: 2mm (Mechanical Surface Detection)
- Electronics: DAE4 Sn1279; Calibrated: 2018.1.3
- Phantom: SAM3; Type: SAM; Serial: TP-1839
- Measurement SW: DASY52, Version 52.8 (8); SEMCAD X Version 14.6.10 (7331)

Ch11/Area Scan (91x151x1): Interpolated grid: dx=1.200 mm, dy=1.200 mm
Maximum value of SAR (interpolated) = 0.889 W/kg

Ch11/Zoom Scan (7x7x7)/Cube 0: Measurement grid: dx=5mm, dy=5mm, dz=5mm
Reference Value = 9.438 V/m; Power Drift = 0.19 dB
Peak SAR (extrapolated) = 0.946 W/kg
SAR(1 g) = 0.447 W/kg; SAR(10 g) = 0.219 W/kg
Maximum value of SAR (measured) = 0.666 W/kg



0 dB = 0.889 W/kg = -0.51 dBW/kg

13_WLAN5.3GHz_802.11a 6Mbps_Right Cheek_0mm_Ch64

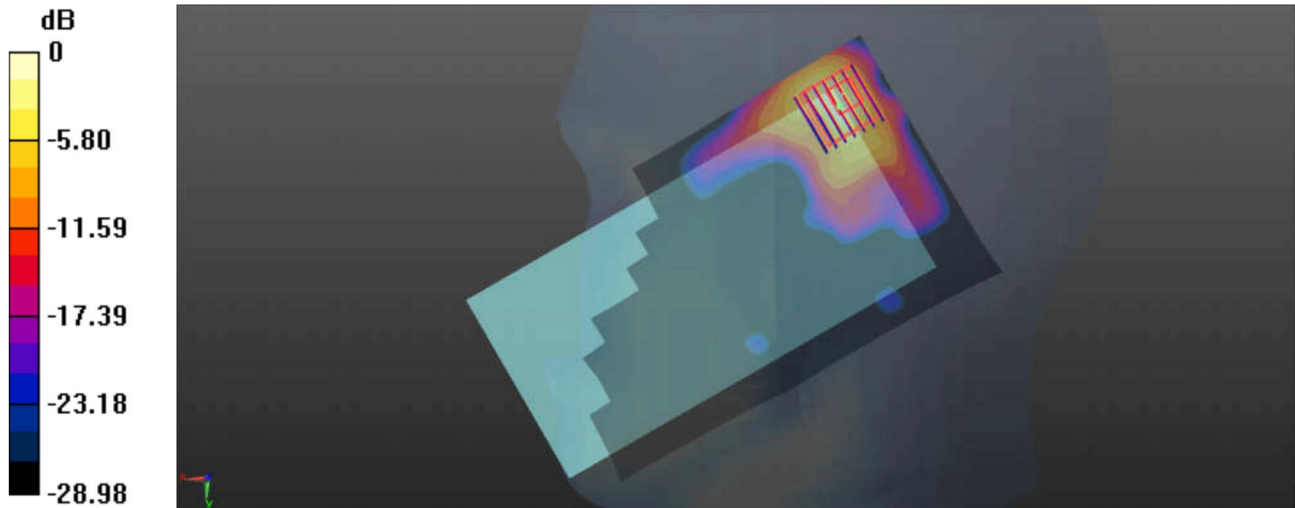
Communication System: UID 0, WIFI (0); Frequency: 5320 MHz; Duty Cycle: 1:1.018
 Medium: HSL_5000 Medium parameters used: $f = 5320 \text{ MHz}$; $\sigma = 4.926 \text{ S/m}$; $\epsilon_r = 37$;
 $\rho = 1000 \text{ kg/m}^3$
 Ambient Temperature : $23.4 \text{ }^\circ\text{C}$; Liquid Temperature : $22.7 \text{ }^\circ\text{C}$

DASY5 Configuration:

- Probe: EX3DV4 - SN3954; ConvF(5.2, 5.2, 5.2); Calibrated: 2018.1.31;
- Sensor-Surface: 1.4mm (Mechanical Surface Detection)
- Electronics: DAE4 Sn1279; Calibrated: 2018.1.3
- Phantom: SAM3; Type: SAM; Serial: TP-1839
- Measurement SW: DASY52, Version 52.8 (8); SEMCAD X Version 14.6.10 (7331)

Ch64/Area Scan (101x181x1): Interpolated grid: $dx=1.000 \text{ mm}$, $dy=1.000 \text{ mm}$
 Maximum value of SAR (interpolated) = 2.07 W/kg

Ch64/Zoom Scan (7x7x7)/Cube 0: Measurement grid: $dx=4\text{mm}$, $dy=4\text{mm}$, $dz=1.4\text{mm}$
 Reference Value = 2.954 V/m ; Power Drift = -0.02 dB
 Peak SAR (extrapolated) = 4.70 W/kg
SAR(1 g) = 1.02 W/kg ; SAR(10 g) = 0.283 W/kg
 Maximum value of SAR (measured) = 2.66 W/kg



$0 \text{ dB} = 2.07 \text{ W/kg} = 3.16 \text{ dBW/kg}$

14_WLAN5.5GHz_802.11a 6Mbps_Right Cheek_0mm_Ch100

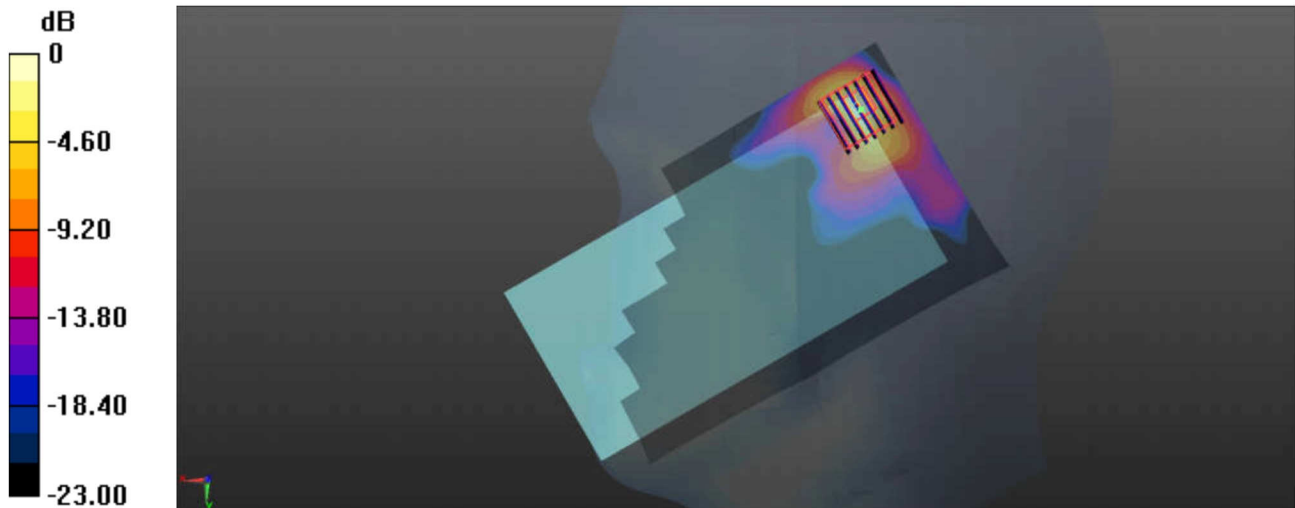
Communication System: UID 0, WIFI (0); Frequency: 5500 MHz; Duty Cycle: 1:1.018
Medium: HSL_5000 Medium parameters used: $f = 5500$ MHz; $\sigma = 5.104$ S/m; $\epsilon_r = 36.731$;
 $\rho = 1000$ kg/m³
Ambient Temperature : 23.4 °C; Liquid Temperature : 22.8 °C

DASY5 Configuration:

- Probe: EX3DV4 - SN3954; ConvF(4.59, 4.59, 4.59); Calibrated: 2018.1.31;
- Sensor-Surface: 1.4mm (Mechanical Surface Detection)
- Electronics: DAE4 Sn1279; Calibrated: 2018.1.3
- Phantom: SAM3; Type: SAM; Serial: TP-1839
- Measurement SW: DASY52, Version 52.8 (8); SEMCAD X Version 14.6.10 (7331)

Ch100/Area Scan (101x181x1): Interpolated grid: dx=1.000 mm, dy=1.000 mm
Maximum value of SAR (interpolated) = 2.72 W/kg

Ch100/Zoom Scan (7x7x7)/Cube 0: Measurement grid: dx=4mm, dy=4mm, dz=1.4mm
Reference Value = 4.055 V/m; Power Drift = -0.02 dB
Peak SAR (extrapolated) = 4.27 W/kg
SAR(1 g) = 0.990 W/kg; SAR(10 g) = 0.282 W/kg
Maximum value of SAR (measured) = 2.50 W/kg



0 dB = 2.72 W/kg = 4.35 dBW/kg

15_WLAN5.8GHz_802.11a 6Mbps_Right Cheek_0mm_Ch157

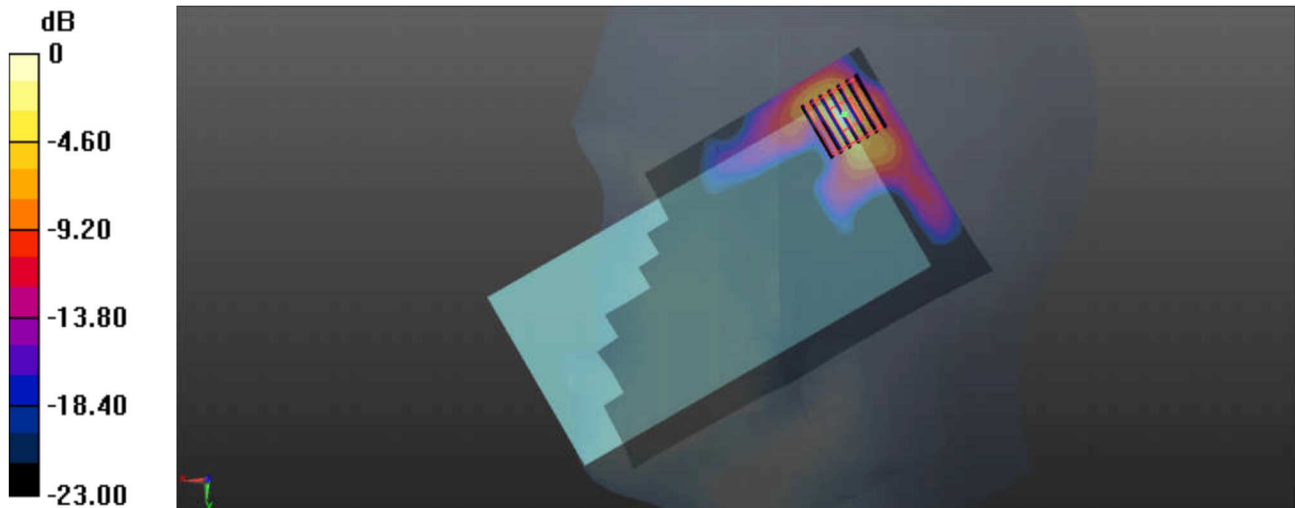
Communication System: UID 0, WIFI (0); Frequency: 5785 MHz; Duty Cycle: 1:1.018
 Medium: HSL_5000 Medium parameters used: $f = 5785$ MHz; $\sigma = 5.403$ S/m; $\epsilon_r = 36.329$;
 $\rho = 1000$ kg/m³
 Ambient Temperature : 23.4 °C; Liquid Temperature : 22.9 °C

DASY5 Configuration:

- Probe: EX3DV4 - SN3954; ConvF(4.74, 4.74, 4.74); Calibrated: 2018.1.31;
- Sensor-Surface: 1.4mm (Mechanical Surface Detection)
- Electronics: DAE4 Sn1279; Calibrated: 2018.1.3
- Phantom: SAM3; Type: SAM; Serial: TP-1839
- Measurement SW: DASY52, Version 52.8 (8); SEMCAD X Version 14.6.10 (7331)

Ch157/Area Scan (101x181x1): Interpolated grid: dx=1.000 mm, dy=1.000 mm
 Maximum value of SAR (interpolated) = 1.61 W/kg

Ch157/Zoom Scan (7x7x7)/Cube 0: Measurement grid: dx=4mm, dy=4mm, dz=1.4mm
 Reference Value = 2.731 V/m; Power Drift = 0.02 dB
 Peak SAR (extrapolated) = 2.79 W/kg
SAR(1 g) = 0.561 W/kg; SAR(10 g) = 0.146 W/kg
 Maximum value of SAR (measured) = 1.61 W/kg



0 dB = 1.61 W/kg = 2.07 dBW/kg