

## #01\_HAC\_E\_GSM850\_GSM Voice\_Ch128

Communication System: GSM-FDD (TDMA, GMSK); Frequency: 824.2 MHz; Duty Cycle: 1:8.6896

Medium: Air Medium parameters used:  $\sigma = 0$  S/m,  $\epsilon_r = 1$ ;  $\rho = 0$  kg/m<sup>3</sup>

Ambient Temperature : 23.4 °C

DASY5 Configuration:

- Probe: ER3DV6 - SN2358; ConvF(1, 1, 1); Calibrated: 2018/1/19;
- Sensor-Surface: (Fix Surface)
- Electronics: DAE4 Sn1424; Calibrated: 2018/1/18
- Phantom: HAC Test Arch with AMCC; Type: SD HAC P01 BA;
- Measurement SW: DASY52, Version 52.10 (0); SEMCAD X Version 14.6.10 (7417)

### E Scan - ER3D: 15 mm from Probe Center to the Device/Hearing Aid Compatibility Test

(101x101x1): Interpolated grid: dx=0.5000 mm, dy=0.5000 mm

Device Reference Point: 0, 0, -6.3 mm

Reference Value = 54.05 V/m; Power Drift = -0.00 dB

Applied MIF = 3.63 dB

RF audio interference level = 36.85 dBV/m

**Emission category: M4**

MIF scaled E-field

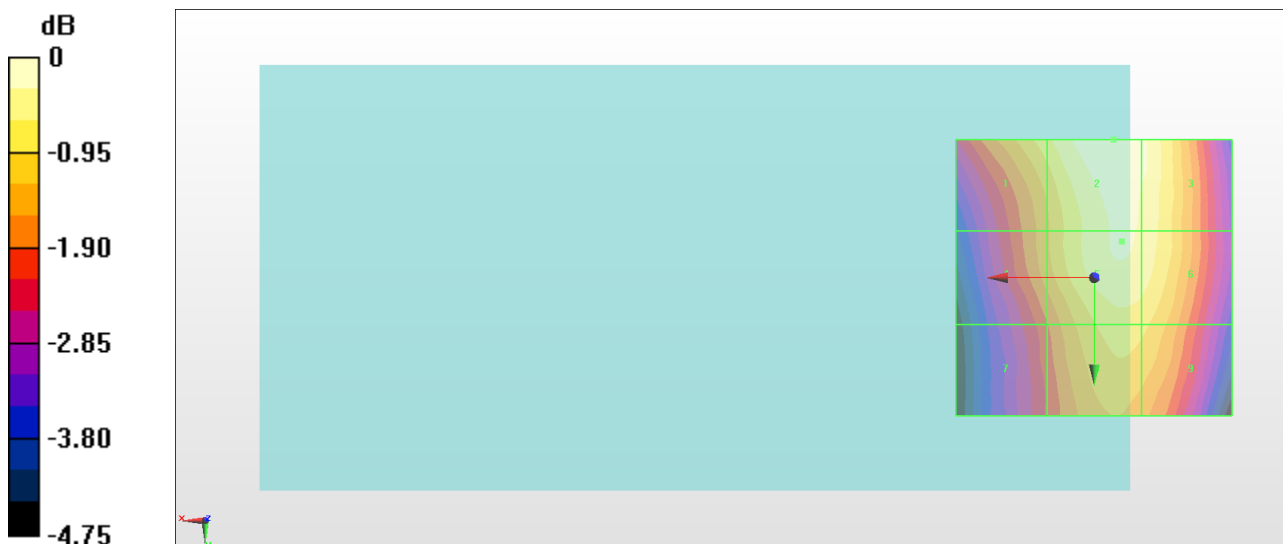
Grid 1 <b>M4</b> <b>36.15 dBV/m</b>	Grid 2 <b>M4</b> <b>36.85 dBV/m</b>	Grid 3 <b>M4</b> <b>36.62 dBV/m</b>
Grid 4 <b>M4</b> <b>35.55 dBV/m</b>	Grid 5 <b>M4</b> <b>36.58 dBV/m</b>	Grid 6 <b>M4</b> <b>36.49 dBV/m</b>
Grid 7 <b>M4</b> <b>34.94 dBV/m</b>	Grid 8 <b>M4</b> <b>36.08 dBV/m</b>	Grid 9 <b>M4</b> <b>36 dBV/m</b>

**Cursor:**

Total = 36.85 dBV/m

E Category: M4

Location: -3.5, -25, 8.7 mm



0 dB = 69.58 V/m = 36.85 dBV/m

## #02\_HAC\_E\_GSM850\_GSM Voice\_Ch189

Communication System: GSM-FDD (TDMA, GMSK); Frequency: 836.4 MHz; Duty Cycle: 1:8.6896

Medium: Air Medium parameters used:  $\sigma = 0$  S/m,  $\epsilon_r = 1$ ;  $\rho = 0$  kg/m<sup>3</sup>

Ambient Temperature : 23.4 °C

DASY5 Configuration:

- Probe: ER3DV6 - SN2358; ConvF(1, 1, 1); Calibrated: 2018/1/19;
- Sensor-Surface: (Fix Surface)
- Electronics: DAE4 Sn1424; Calibrated: 2018/1/18
- Phantom: HAC Test Arch with AMCC; Type: SD HAC P01 BA;
- Measurement SW: DASY52, Version 52.10 (0); SEMCAD X Version 14.6.10 (7417)

### E Scan - ER3D: 15 mm from Probe Center to the Device/Hearing Aid Compatibility Test

(101x101x1): Interpolated grid: dx=0.5000 mm, dy=0.5000 mm

Device Reference Point: 0, 0, -6.3 mm

Reference Value = 45.28 V/m; Power Drift = -0.19 dB

Applied MIF = 3.63 dB

RF audio interference level = 35.35 dBV/m

**Emission category: M4**

MIF scaled E-field

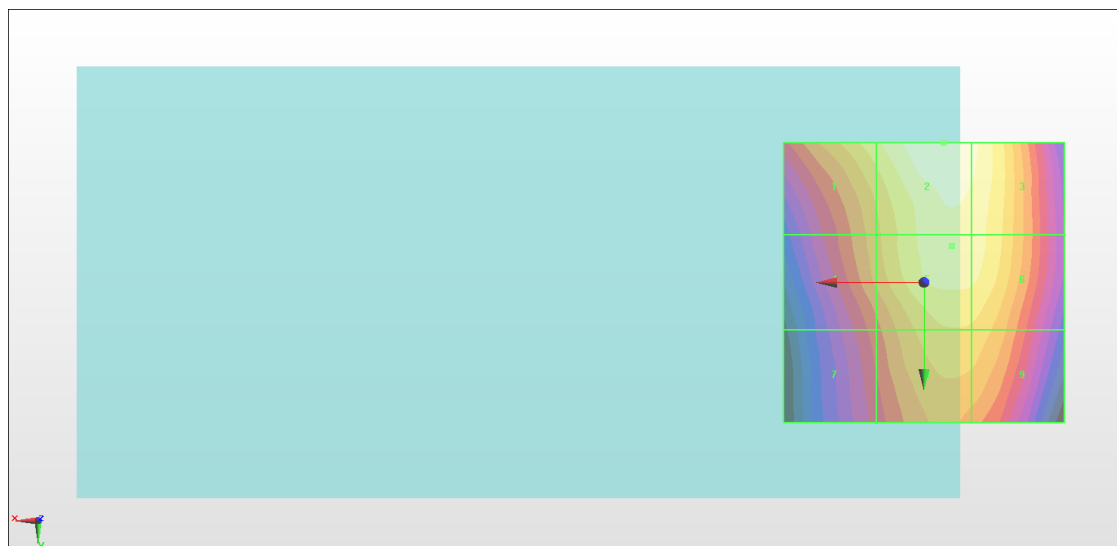
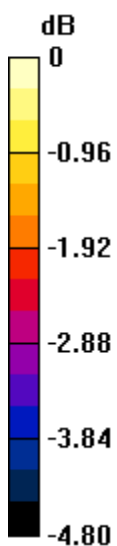
Grid 1 <b>M4</b> <b>34.67 dBV/m</b>	Grid 2 <b>M4</b> <b>35.35 dBV/m</b>	Grid 3 <b>M4</b> <b>35.14 dBV/m</b>
Grid 4 <b>M4</b> <b>33.98 dBV/m</b>	Grid 5 <b>M4</b> <b>34.97 dBV/m</b>	Grid 6 <b>M4</b> <b>34.9 dBV/m</b>
Grid 7 <b>M4</b> <b>33.33 dBV/m</b>	Grid 8 <b>M4</b> <b>34.37 dBV/m</b>	Grid 9 <b>M4</b> <b>34.34 dBV/m</b>

**Cursor:**

Total = 35.35 dBV/m

E Category: M4

Location: -3.5, -25, 8.7 mm



0 dB = 58.58 V/m = 35.35 dBV/m

### #03\_HAC\_E\_GSM850\_GSM Voice\_Ch251

Communication System: GSM-FDD (TDMA, GMSK); Frequency: 848.8 MHz; Duty Cycle: 1:8.6896

Medium: Air Medium parameters used:  $\sigma = 0$  S/m,  $\epsilon_r = 1$ ;  $\rho = 0$  kg/m<sup>3</sup>

Ambient Temperature : 23.4 °C

DASY5 Configuration:

- Probe: ER3DV6 - SN2358; ConvF(1, 1, 1); Calibrated: 2018/1/19;
- Sensor-Surface: (Fix Surface)
- Electronics: DAE4 Sn1424; Calibrated: 2018/1/18
- Phantom: HAC Test Arch with AMCC; Type: SD HAC P01 BA;
- Measurement SW: DASY52, Version 52.10 (0); SEMCAD X Version 14.6.10 (7417)

### E Scan - ER3D: 15 mm from Probe Center to the Device/Hearing Aid Compatibility Test

**(101x101x1):** Interpolated grid: dx=0.5000 mm, dy=0.5000 mm

Device Reference Point: 0, 0, -6.3 mm

Reference Value = 40.38 V/m; Power Drift = -0.18 dB

Applied MIF = 3.63 dB

RF audio interference level = 34.53 dBV/m

**Emission category: M4**

MIF scaled E-field

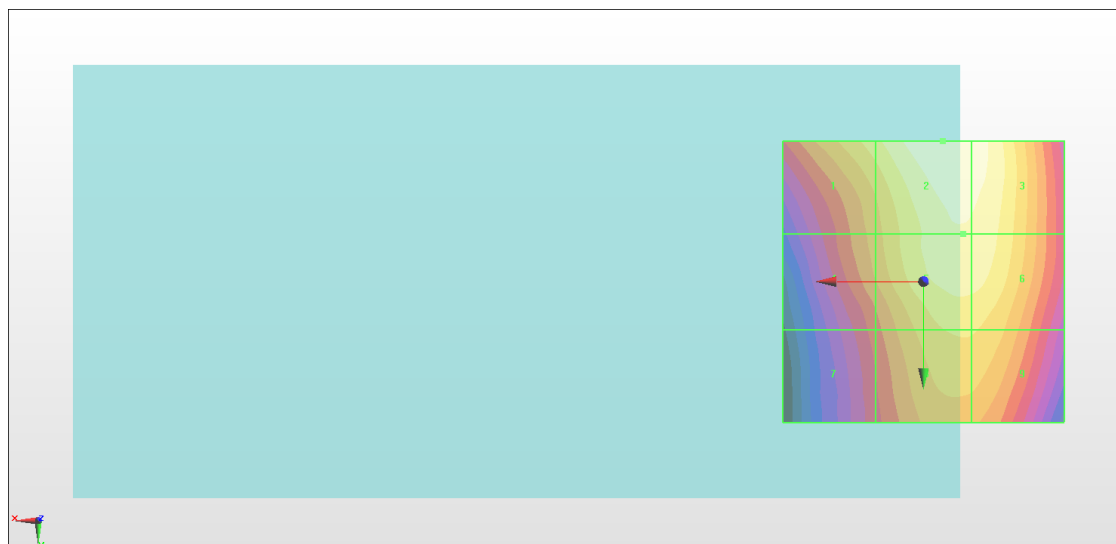
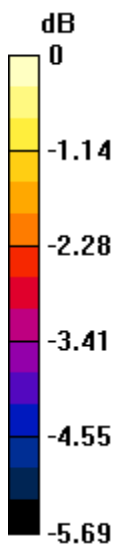
Grid 1 <b>M4</b> <b>33.66 dBV/m</b>	Grid 2 <b>M4</b> <b>34.53 dBV/m</b>	Grid 3 <b>M4</b> <b>34.44 dBV/m</b>
Grid 4 <b>M4</b> <b>32.86 dBV/m</b>	Grid 5 <b>M4</b> <b>34.11 dBV/m</b>	Grid 6 <b>M4</b> <b>34.09 dBV/m</b>
Grid 7 <b>M4</b> <b>32.1 dBV/m</b>	Grid 8 <b>M4</b> <b>33.46 dBV/m</b>	Grid 9 <b>M4</b> <b>33.44 dBV/m</b>

**Cursor:**

Total = 34.53 dBV/m

E Category: M4

Location: -3.5, -25, 8.7 mm



0 dB = 53.25 V/m = 34.53 dBV/m

## #04\_HAC\_E\_GSM1900\_GSM Voice\_Ch512

Communication System: GSM-FDD (TDMA, GMSK); Frequency: 1850.2 MHz; Duty Cycle: 1:8.6896

Medium: Air Medium parameters used:  $\sigma = 0$  S/m,  $\epsilon_r = 1$ ;  $\rho = 0$  kg/m<sup>3</sup>

Ambient Temperature : 23.4 °C

DASY5 Configuration:

- Probe: ER3DV6 - SN2358; ConvF(1, 1, 1); Calibrated: 2018/1/19;
- Sensor-Surface: (Fix Surface)
- Electronics: DAE4 Sn1424; Calibrated: 2018/1/18
- Phantom: HAC Test Arch with AMCC; Type: SD HAC P01 BA;
- Measurement SW: DASY52, Version 52.10 (0); SEMCAD X Version 14.6.10 (7417)

### E Scan - ER3D: 15 mm from Probe Center to the Device/Hearing Aid Compatibility Test

**(101x101x1):** Interpolated grid: dx=0.5000 mm, dy=0.5000 mm

Device Reference Point: 0, 0, -6.3 mm

Reference Value = 10.93 V/m; Power Drift = 0.01 dB

Applied MIF = 3.63 dB

RF audio interference level = 27.95 dBV/m

**Emission category: M4**

MIF scaled E-field

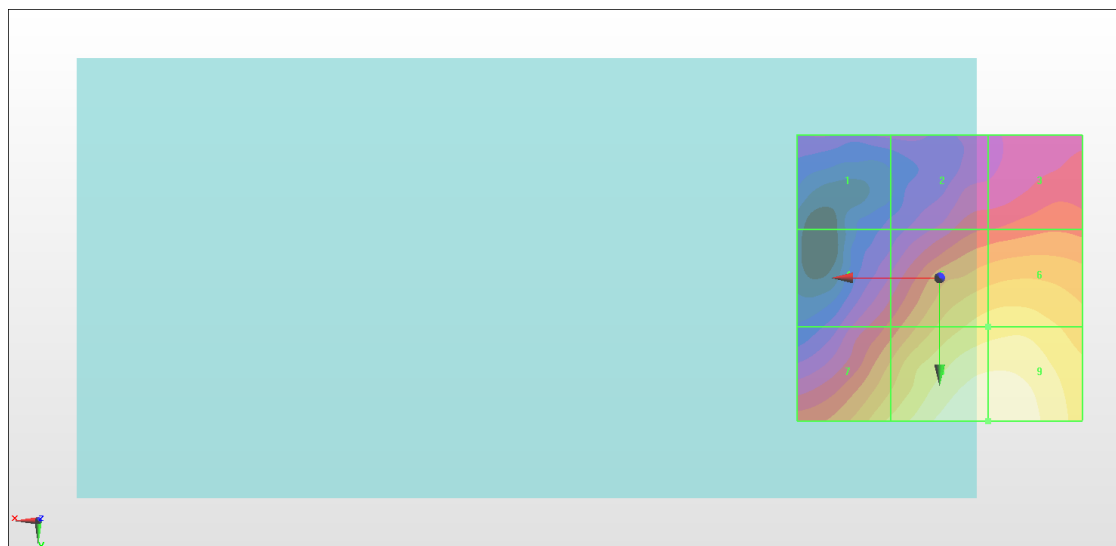
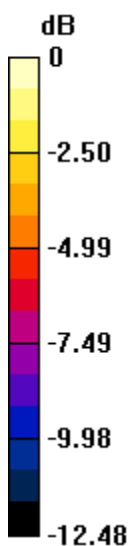
Grid 1 <b>M4</b> <b>19.95 dBV/m</b>	Grid 2 <b>M4</b> <b>22.14 dBV/m</b>	Grid 3 <b>M4</b> <b>22.9 dBV/m</b>
Grid 4 <b>M4</b> <b>22.45 dBV/m</b>	Grid 5 <b>M4</b> <b>25.87 dBV/m</b>	Grid 6 <b>M4</b> <b>26.05 dBV/m</b>
Grid 7 <b>M4</b> <b>25.66 dBV/m</b>	Grid 8 <b>M4</b> <b>27.95 dBV/m</b>	Grid 9 <b>M4</b> <b>27.95 dBV/m</b>

**Cursor:**

Total = 27.95 dBV/m

E Category: M4

Location: -8.5, 25, 8.7 mm



0 dB = 24.96 V/m = 27.94 dBV/m

### #05\_HAC\_E\_GSM1900\_GSM Voice\_Ch661

Communication System: GSM-FDD (TDMA, GMSK); Frequency: 1880 MHz; Duty Cycle: 1:8.6896

Medium: Air Medium parameters used:  $\sigma = 0$  S/m,  $\epsilon_r = 1$ ;  $\rho = 0$  kg/m<sup>3</sup>

Ambient Temperature : 23.4 °C

DASY5 Configuration:

- Probe: ER3DV6 - SN2358; ConvF(1, 1, 1); Calibrated: 2018/1/19;
- Sensor-Surface: (Fix Surface)
- Electronics: DAE4 Sn1424; Calibrated: 2018/1/18
- Phantom: HAC Test Arch with AMCC; Type: SD HAC P01 BA;
- Measurement SW: DASY52, Version 52.10 (0); SEMCAD X Version 14.6.10 (7417)

### E Scan - ER3D: 15 mm from Probe Center to the Device/Hearing Aid Compatibility Test

(101x101x1): Interpolated grid: dx=0.5000 mm, dy=0.5000 mm

Device Reference Point: 0, 0, -6.3 mm

Reference Value = 12.01 V/m; Power Drift = -0.01 dB

Applied MIF = 3.63 dB

RF audio interference level = 28.40 dBV/m

**Emission category: M4**

MIF scaled E-field

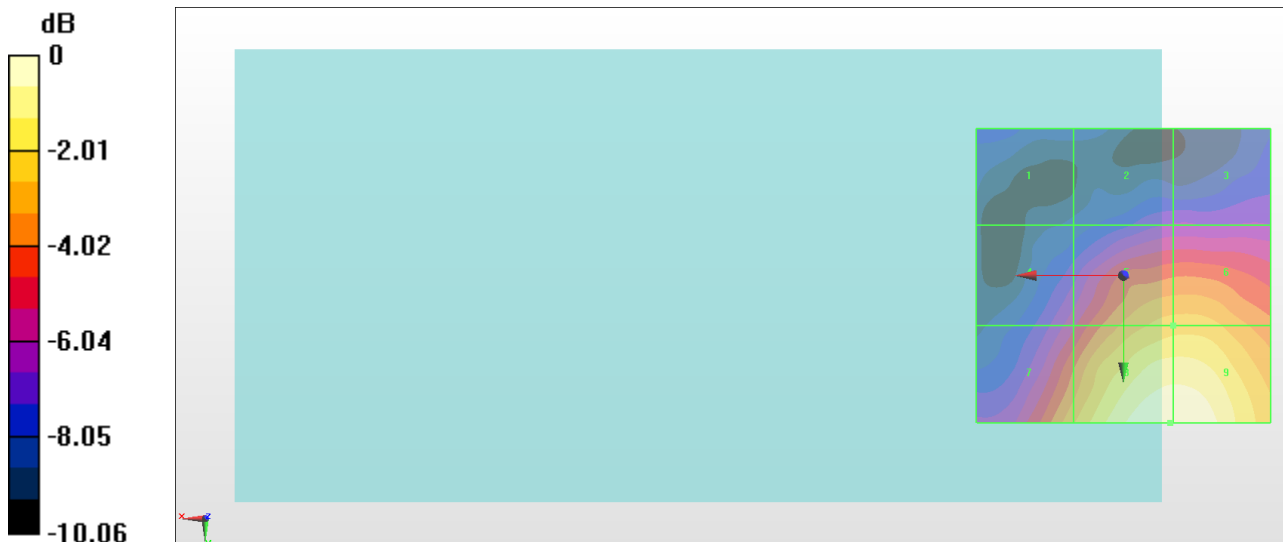
Grid 1 <b>M4</b> <b>20.88 dBV/m</b>	Grid 2 <b>M4</b> <b>21.83 dBV/m</b>	Grid 3 <b>M4</b> <b>21.87 dBV/m</b>
Grid 4 <b>M4</b> <b>22.91 dBV/m</b>	Grid 5 <b>M4</b> <b>26.07 dBV/m</b>	Grid 6 <b>M4</b> <b>26.11 dBV/m</b>
Grid 7 <b>M4</b> <b>25.66 dBV/m</b>	Grid 8 <b>M4</b> <b>28.4 dBV/m</b>	Grid 9 <b>M4</b> <b>28.39 dBV/m</b>

**Cursor:**

Total = 28.40 dBV/m

E Category: M4

Location: -8, 25, 8.7 mm



0 dB = 26.29 V/m = 28.40 dBV/m

## #06\_HAC\_E\_GSM1900\_GSM Voice\_Ch810

Communication System: GSM-FDD (TDMA, GMSK); Frequency: 1909.8 MHz; Duty Cycle: 1:8.6896

Medium: Air Medium parameters used:  $\sigma = 0$  S/m,  $\epsilon_r = 1$ ;  $\rho = 0$  kg/m<sup>3</sup>

Ambient Temperature : 23.4 °C

DASY5 Configuration:

- Probe: ER3DV6 - SN2358; ConvF(1, 1, 1); Calibrated: 2018/1/19;
- Sensor-Surface: (Fix Surface)
- Electronics: DAE4 Sn1424; Calibrated: 2018/1/18
- Phantom: HAC Test Arch with AMCC; Type: SD HAC P01 BA;
- Measurement SW: DASY52, Version 52.10 (0); SEMCAD X Version 14.6.10 (7417)

### E Scan - ER3D: 15 mm from Probe Center to the Device/Hearing Aid Compatibility Test

**(101x101x1):** Interpolated grid: dx=0.5000 mm, dy=0.5000 mm

Device Reference Point: 0, 0, -6.3 mm

Reference Value = 9.562 V/m; Power Drift = -0.09 dB

Applied MIF = 3.63 dB

RF audio interference level = 27.47 dBV/m

**Emission category: M4**

MIF scaled E-field

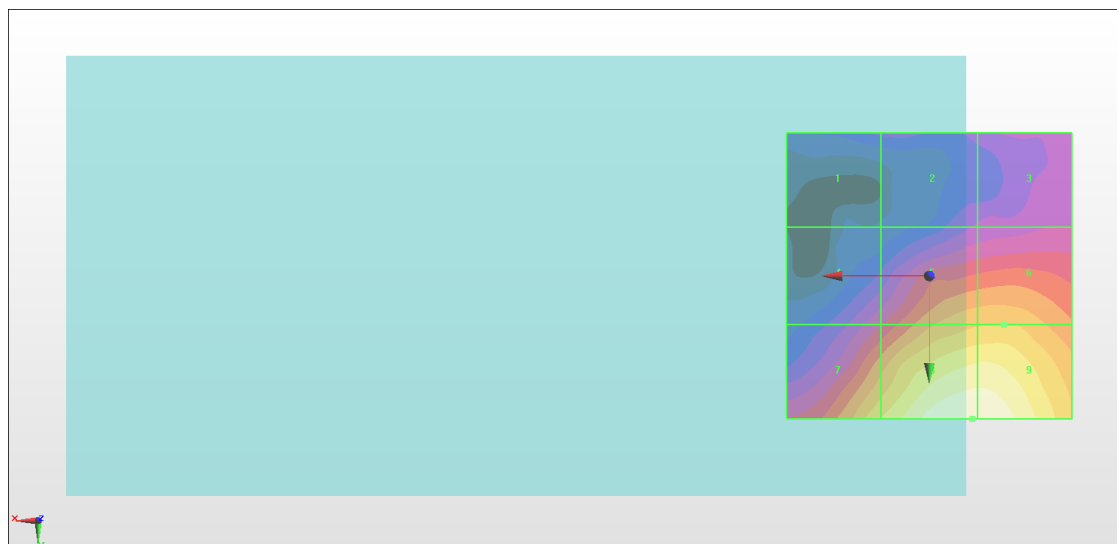
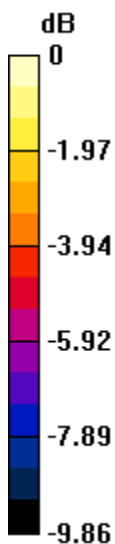
Grid 1 <b>M4</b> <b>20.45 dBV/m</b>	Grid 2 <b>M4</b> <b>21.07 dBV/m</b>	Grid 3 <b>M4</b> <b>21.62 dBV/m</b>
Grid 4 <b>M4</b> <b>22.22 dBV/m</b>	Grid 5 <b>M4</b> <b>24.79 dBV/m</b>	Grid 6 <b>M4</b> <b>24.9 dBV/m</b>
Grid 7 <b>M4</b> <b>25.53 dBV/m</b>	Grid 8 <b>M4</b> <b>27.47 dBV/m</b>	Grid 9 <b>M4</b> <b>27.46 dBV/m</b>

**Cursor:**

Total = 27.47 dBV/m

E Category: M4

Location: -7.5, 25, 8.7 mm



0 dB = 23.63 V/m = 27.47 dBV/m

### #07\_HAC\_E\_CDMA BC0\_1xRTT, RC1 SO3, 18th Rate\_Ch1013

Communication System: CDMA2000, RC1, SO3, 1/8th Rate 25 fr.; Frequency: 824.7 MHz; Duty Cycle: 1:17.7419

Medium: Air Medium parameters used:  $\sigma = 0$  S/m,  $\epsilon_r = 1$ ;  $\rho = 0$  kg/m<sup>3</sup>

Ambient Temperature : 23.4 °C

**DASY5 Configuration:**

- Probe: ER3DV6 - SN2358; ConvF(1, 1, 1); Calibrated: 2018/1/19;
- Sensor-Surface: (Fix Surface)
- Electronics: DAE4 Sn1424; Calibrated: 2018/1/18
- Phantom: HAC Test Arch with AMCC; Type: SD HAC P01 BA;
- Measurement SW: DASY52, Version 52.10 (0); SEMCAD X Version 14.6.10 (7417)

**E Scan - ER3D: 15 mm from Probe Center to the Device/Hearing Aid Compatibility Test (101x101x1):** Interpolated grid: dx=0.5000 mm, dy=0.5000 mm

Device Reference Point: 0, 0, -6.3 mm

Reference Value = 20.06 V/m; Power Drift = 0.09 dB

Applied MIF = 3.26 dB

RF audio interference level = 28.69 dBV/m

**Emission category: M4**

MIF scaled E-field

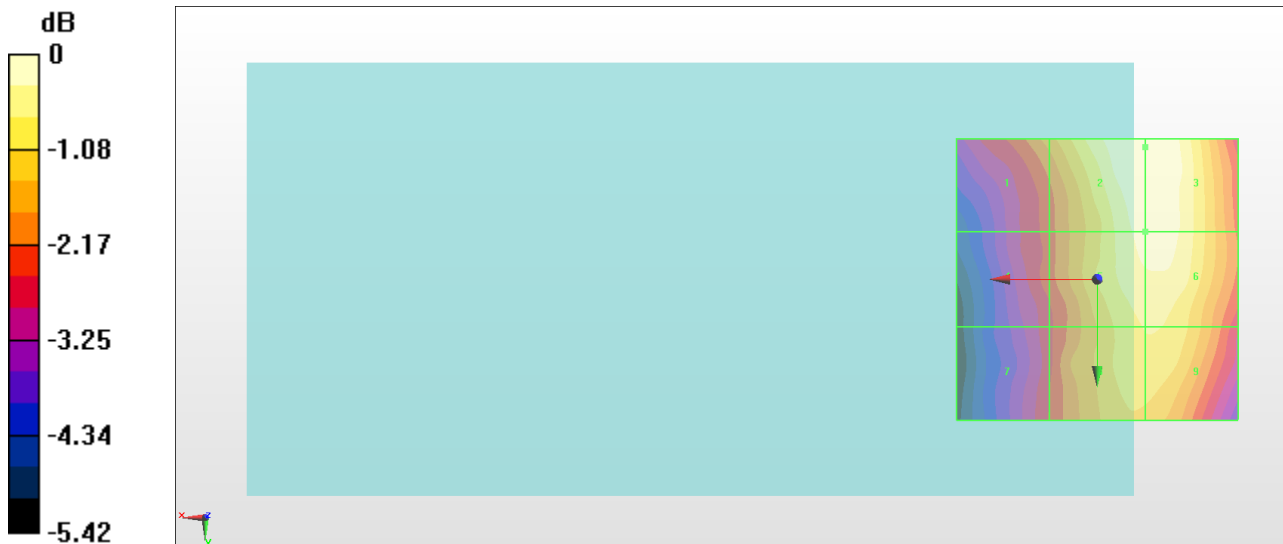
Grid 1 <b>M4</b> <b>27.1 dBV/m</b>	Grid 2 <b>M4</b> <b>28.69 dBV/m</b>	Grid 3 <b>M4</b> <b>28.69 dBV/m</b>
Grid 4 <b>M4</b> <b>26.4 dBV/m</b>	Grid 5 <b>M4</b> <b>28.48 dBV/m</b>	Grid 6 <b>M4</b> <b>28.51 dBV/m</b>
Grid 7 <b>M4</b> <b>26.2 dBV/m</b>	Grid 8 <b>M4</b> <b>27.98 dBV/m</b>	Grid 9 <b>M4</b> <b>27.99 dBV/m</b>

**Cursor:**

Total = 28.69 dBV/m

E Category: M4

Location: -8.5, -23.5, 8.7 mm



0 dB = 27.18 V/m = 28.68 dBV/m

### #08\_HAC\_E\_CDMA BC0\_1xRTT, RC1 SO3, 18th Rate\_Ch384

Communication System: CDMA2000, RC1, SO3, 1/8th Rate 25 fr.; Frequency: 836.52 MHz; Duty Cycle: 1:17.7419

Medium: Air Medium parameters used:  $\sigma = 0$  S/m,  $\epsilon_r = 1$ ;  $\rho = 0$  kg/m<sup>3</sup>

Ambient Temperature : 23.4 °C

DASY5 Configuration:

- Probe: ER3DV6 - SN2358; ConvF(1, 1, 1); Calibrated: 2018/1/19;
- Sensor-Surface: (Fix Surface)
- Electronics: DAE4 Sn1424; Calibrated: 2018/1/18
- Phantom: HAC Test Arch with AMCC; Type: SD HAC P01 BA;
- Measurement SW: DASY52, Version 52.10 (0); SEMCAD X Version 14.6.10 (7417)

### E Scan - ER3D: 15 mm from Probe Center to the Device/Hearing Aid Compatibility Test

(101x101x1): Interpolated grid: dx=0.5000 mm, dy=0.5000 mm

Device Reference Point: 0, 0, -6.3 mm

Reference Value = 18.17 V/m; Power Drift = -0.01 dB

Applied MIF = 3.26 dB

RF audio interference level = 27.87 dBV/m

**Emission category: M4**

MIF scaled E-field

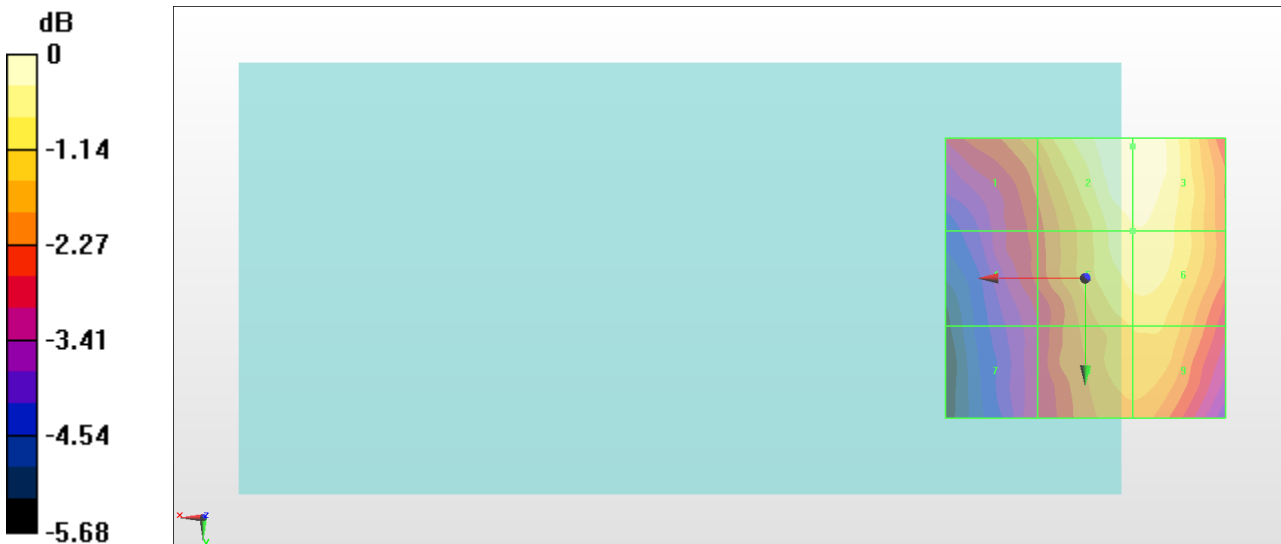
Grid 1 <b>M4</b> <b>26.38 dBV/m</b>	Grid 2 <b>M4</b> <b>27.87 dBV/m</b>	Grid 3 <b>M4</b> <b>27.87 dBV/m</b>
Grid 4 <b>M4</b> <b>25.45 dBV/m</b>	Grid 5 <b>M4</b> <b>27.46 dBV/m</b>	Grid 6 <b>M4</b> <b>27.48 dBV/m</b>
Grid 7 <b>M4</b> <b>24.89 dBV/m</b>	Grid 8 <b>M4</b> <b>26.76 dBV/m</b>	Grid 9 <b>M4</b> <b>26.8 dBV/m</b>

**Cursor:**

Total = 27.87 dBV/m

E Category: M4

Location: -8.5, -23.5, 8.7 mm



0 dB = 24.74 V/m = 27.87 dBV/m

### #09\_HAC\_E\_CDMA BC0\_1xRTT, RC1 SO3, 18th Rate\_Ch777

Communication System: CDMA2000, RC1, SO3, 1/8th Rate 25 fr.; Frequency: 848.31 MHz; Duty Cycle: 1:17.7419

Medium: Air Medium parameters used:  $\sigma = 0$  S/m,  $\epsilon_r = 1$ ;  $\rho = 0$  kg/m<sup>3</sup>

Ambient Temperature : 23.4 °C

DASY5 Configuration:

- Probe: ER3DV6 - SN2358; ConvF(1, 1, 1); Calibrated: 2018/1/19;
- Sensor-Surface: (Fix Surface)
- Electronics: DAE4 Sn1424; Calibrated: 2018/1/18
- Phantom: HAC Test Arch with AMCC; Type: SD HAC P01 BA;
- Measurement SW: DASY52, Version 52.10 (0); SEMCAD X Version 14.6.10 (7417)

### E Scan - ER3D: 15 mm from Probe Center to the Device/Hearing Aid Compatibility Test

(101x101x1): Interpolated grid: dx=0.5000 mm, dy=0.5000 mm

Device Reference Point: 0, 0, -6.3 mm

Reference Value = 16.73 V/m; Power Drift = 0.02 dB

Applied MIF = 3.26 dB

RF audio interference level = 26.91 dBV/m

**Emission category: M4**

MIF scaled E-field

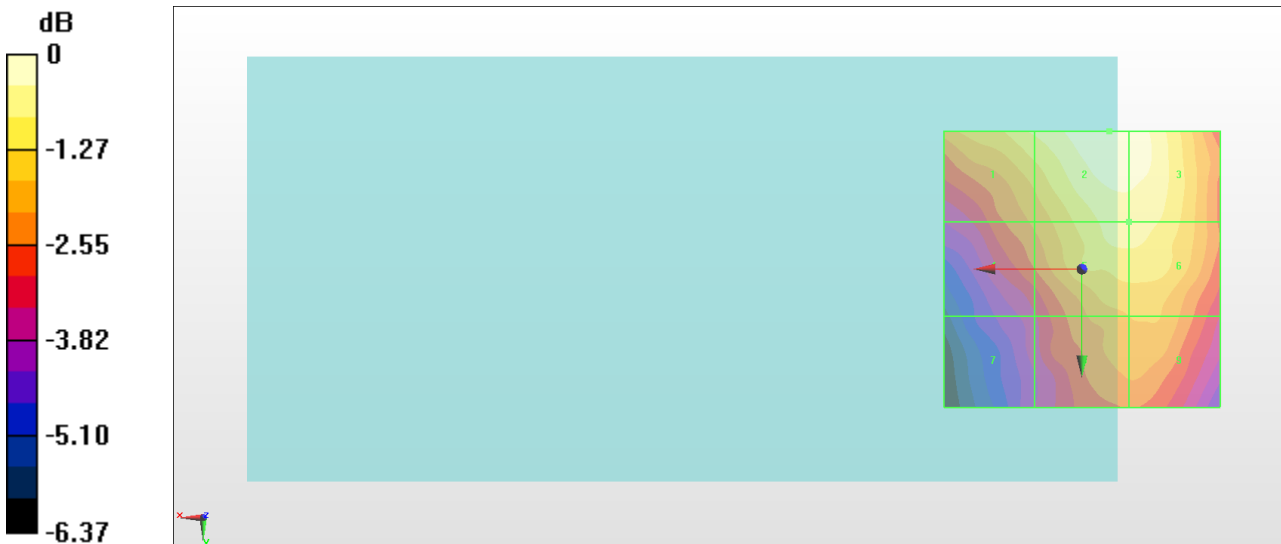
Grid 1 <b>M4</b> <b>26.16 dBV/m</b>	Grid 2 <b>M4</b> <b>26.91 dBV/m</b>	Grid 3 <b>M4</b> <b>26.83 dBV/m</b>
Grid 4 <b>M4</b> <b>24.9 dBV/m</b>	Grid 5 <b>M4</b> <b>26.27 dBV/m</b>	Grid 6 <b>M4</b> <b>26.27 dBV/m</b>
Grid 7 <b>M4</b> <b>23.49 dBV/m</b>	Grid 8 <b>M4</b> <b>25.22 dBV/m</b>	Grid 9 <b>M4</b> <b>25.27 dBV/m</b>

**Cursor:**

Total = 26.91 dBV/m

E Category: M4

Location: -5, -25, 8.7 mm



0 dB = 22.16 V/m = 26.91 dBV/m

## #10\_HAC\_E\_CDMA BC1\_ 1xRTT, RC1 SO3, 18th Rate\_Ch25

Communication System: CDMA2000, RC1, SO3, 1/8th Rate 25 fr.; Frequency: 1851.25 MHz; Duty Cycle: 1:17.7419

Medium: Air Medium parameters used:  $\sigma = 0$  S/m,  $\epsilon_r = 1$ ;  $\rho = 0$  kg/m<sup>3</sup>

Ambient Temperature : 23.4 °C

DASY5 Configuration:

- Probe: ER3DV6 - SN2358; ConvF(1, 1, 1); Calibrated: 2018/1/19;
- Sensor-Surface: (Fix Surface)
- Electronics: DAE4 Sn1424; Calibrated: 2018/1/18
- Phantom: HAC Test Arch with AMCC; Type: SD HAC P01 BA;
- Measurement SW: DASY52, Version 52.10 (0); SEMCAD X Version 14.6.10 (7417)

### E Scan - ER3D: 15 mm from Probe Center to the Device/Hearing Aid Compatibility Test

**(101x101x1):** Interpolated grid: dx=0.5000 mm, dy=0.5000 mm

Device Reference Point: 0, 0, -6.3 mm

Reference Value = 6.731 V/m; Power Drift = -0.09 dB

Applied MIF = 3.26 dB

RF audio interference level = 23.19 dBV/m

**Emission category: M4**

MIF scaled E-field

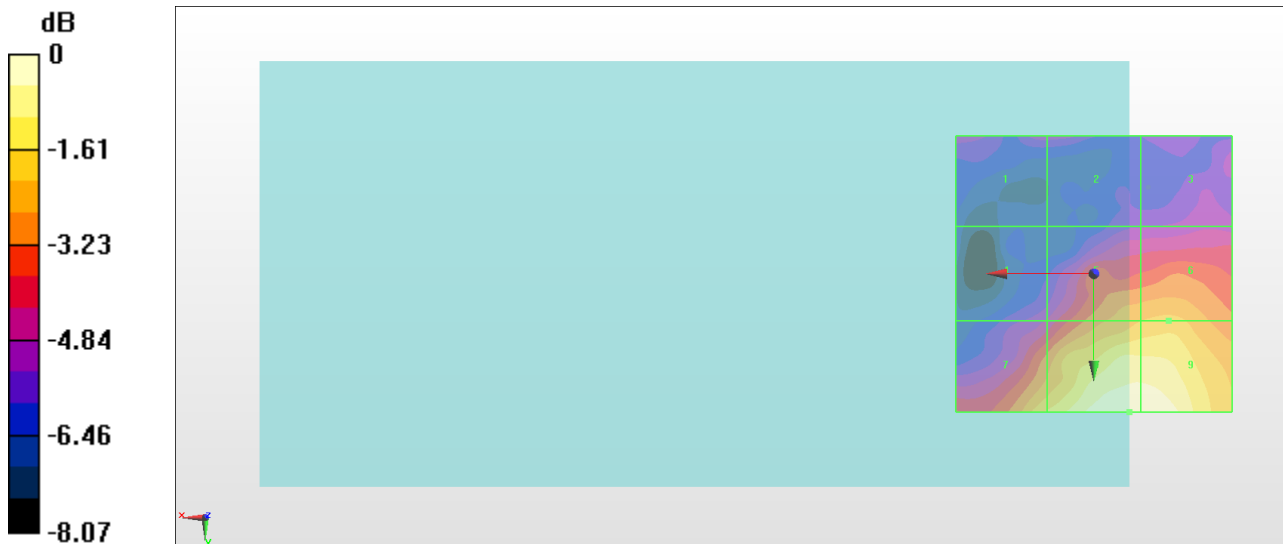
Grid 1 <b>M4</b> <b>18.22 dBV/m</b>	Grid 2 <b>M4</b> <b>18.22 dBV/m</b>	Grid 3 <b>M4</b> <b>18.3 dBV/m</b>
Grid 4 <b>M4</b> <b>18.46 dBV/m</b>	Grid 5 <b>M4</b> <b>21.04 dBV/m</b>	Grid 6 <b>M4</b> <b>21.24 dBV/m</b>
Grid 7 <b>M4</b> <b>21.66 dBV/m</b>	Grid 8 <b>M4</b> <b>23.19 dBV/m</b>	Grid 9 <b>M4</b> <b>23.15 dBV/m</b>

**Cursor:**

Total = 23.19 dBV/m

E Category: M4

Location: -6.5, 25, 8.7 mm



0 dB = 14.44 V/m = 23.19 dBV/m

### #11\_HAC\_E\_CDMA BC1\_1xRTT, RC1 SO3, 18th Rate\_Ch600

Communication System: CDMA2000, RC1, SO3, 1/8th Rate 25 fr.; Frequency: 1880 MHz; Duty Cycle: 1:17.7419

Medium: Air Medium parameters used:  $\sigma = 0$  S/m,  $\epsilon_r = 1$ ;  $\rho = 0$  kg/m<sup>3</sup>

Ambient Temperature : 23.4 °C

**DASY5 Configuration:**

- Probe: ER3DV6 - SN2358; ConvF(1, 1, 1); Calibrated: 2018/1/19;
- Sensor-Surface: (Fix Surface)
- Electronics: DAE4 Sn1424; Calibrated: 2018/1/18
- Phantom: HAC Test Arch with AMCC; Type: SD HAC P01 BA;
- Measurement SW: DASY52, Version 52.10 (0); SEMCAD X Version 14.6.10 (7417)

### E Scan - ER3D: 15 mm from Probe Center to the Device/Hearing Aid Compatibility Test

**(101x101x1):** Interpolated grid: dx=0.5000 mm, dy=0.5000 mm

Device Reference Point: 0, 0, -6.3 mm

Reference Value = 7.174 V/m; Power Drift = 0.04 dB

Applied MIF = 3.26 dB

RF audio interference level = 23.47 dBV/m

**Emission category: M4**

MIF scaled E-field

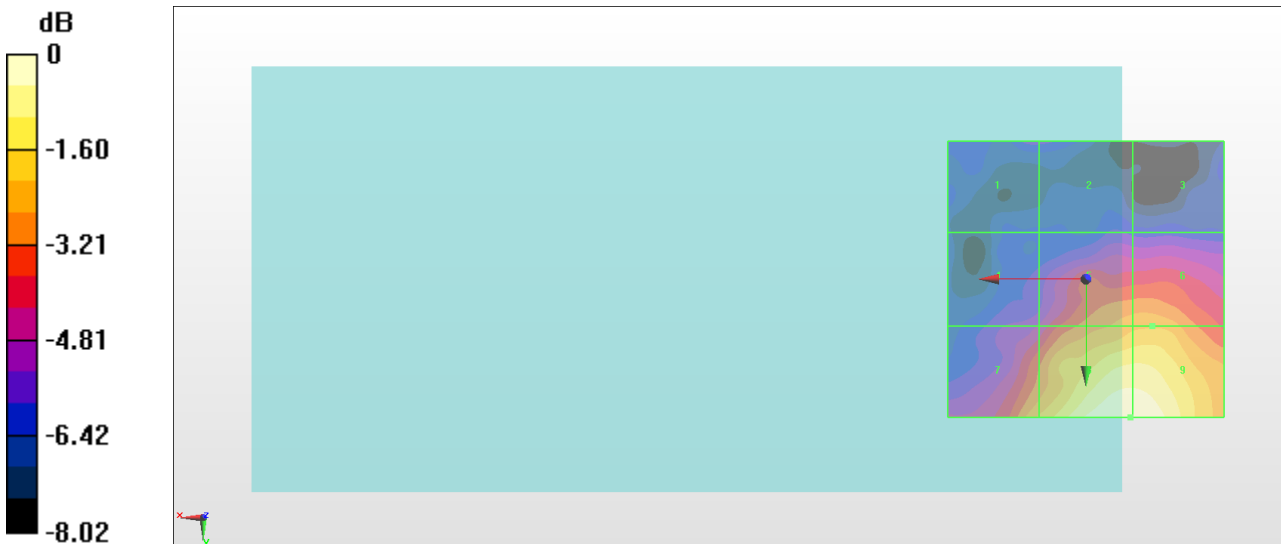
Grid 1 <b>M4</b> <b>17.92 dBV/m</b>	Grid 2 <b>M4</b> <b>17.9 dBV/m</b>	Grid 3 <b>M4</b> <b>17.55 dBV/m</b>
Grid 4 <b>M4</b> <b>18.76 dBV/m</b>	Grid 5 <b>M4</b> <b>21.18 dBV/m</b>	Grid 6 <b>M4</b> <b>21.26 dBV/m</b>
Grid 7 <b>M4</b> <b>21.45 dBV/m</b>	Grid 8 <b>M4</b> <b>23.47 dBV/m</b>	Grid 9 <b>M4</b> <b>23.46 dBV/m</b>

**Cursor:**

Total = 23.47 dBV/m

E Category: M4

Location: -8, 25, 8.7 mm



0 dB = 14.90 V/m = 23.46 dBV/m

## #12\_HAC\_E\_CDMA BC1\_ 1xRTT, RC1 SO3, 18th Rate\_Ch1175

Communication System: CDMA2000, RC1, SO3, 1/8th Rate 25 fr.; Frequency: 1908.75 MHz; Duty Cycle: 1:17.7419

Medium: Air Medium parameters used:  $\sigma = 0$  S/m,  $\epsilon_r = 1$ ;  $\rho = 0$  kg/m<sup>3</sup>

Ambient Temperature : 23.4 °C

DASY5 Configuration:

- Probe: ER3DV6 - SN2358; ConvF(1, 1, 1); Calibrated: 2018/1/19;
- Sensor-Surface: (Fix Surface)
- Electronics: DAE4 Sn1424; Calibrated: 2018/1/18
- Phantom: HAC Test Arch with AMCC; Type: SD HAC P01 BA;
- Measurement SW: DASY52, Version 52.10 (0); SEMCAD X Version 14.6.10 (7417)

### E Scan - ER3D: 15 mm from Probe Center to the Device/Hearing Aid Compatibility Test

(101x101x1): Interpolated grid: dx=0.5000 mm, dy=0.5000 mm

Device Reference Point: 0, 0, -6.3 mm

Reference Value = 5.939 V/m; Power Drift = -0.12 dB

Applied MIF = 3.26 dB

RF audio interference level = 22.70 dBV/m

**Emission category: M4**

MIF scaled E-field

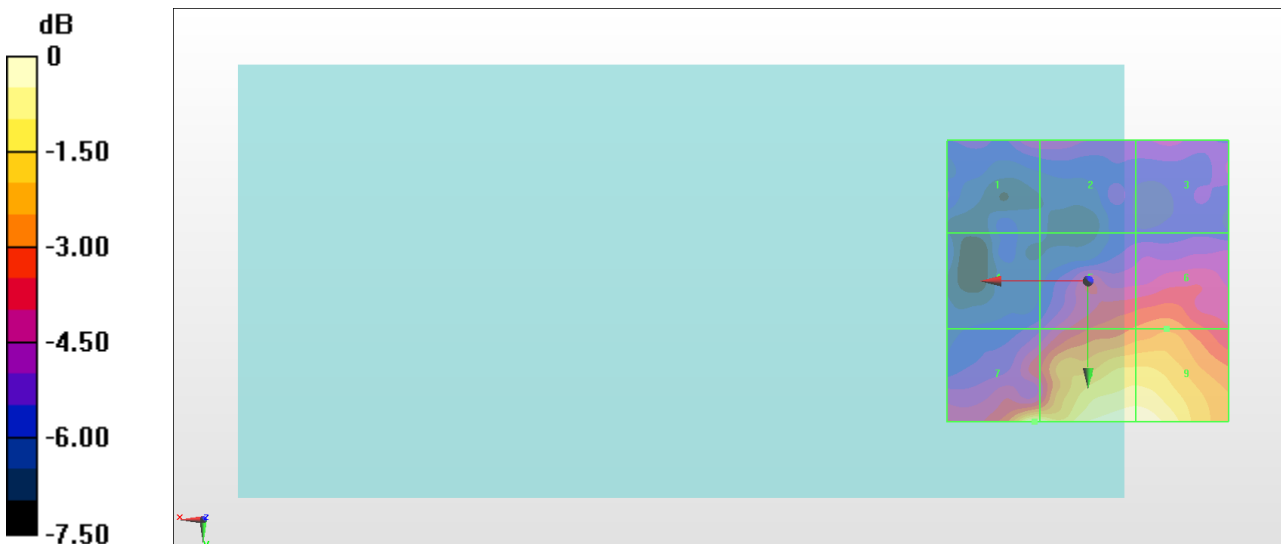
Grid 1 <b>M4</b> <b>18.28 dBV/m</b>	Grid 2 <b>M4</b> <b>18.29 dBV/m</b>	Grid 3 <b>M4</b> <b>17.95 dBV/m</b>
Grid 4 <b>M4</b> <b>17.63 dBV/m</b>	Grid 5 <b>M4</b> <b>19.79 dBV/m</b>	Grid 6 <b>M4</b> <b>20.11 dBV/m</b>
Grid 7 <b>M4</b> <b>22.7 dBV/m</b>	Grid 8 <b>M4</b> <b>22.62 dBV/m</b>	Grid 9 <b>M4</b> <b>22.62 dBV/m</b>

**Cursor:**

Total = 22.70 dBV/m

E Category: M4

Location: 9.5, 25, 8.7 mm



0 dB = 13.65 V/m = 22.70 dBV/m

### #13\_HAC\_E\_WLAN2.4GHz\_802.11g\_6Mbps\_Ch1

Communication System: 802.11g ; Frequency: 2412 MHz;Duty Cycle: 1:12.5893

Medium: Air Medium parameters used:  $\sigma = 0$  S/m,  $\epsilon_r = 1$ ;  $\rho = 0$  kg/m<sup>3</sup>

Ambient Temperature : 23.4 °C

DASY5 Configuration:

- Probe: EF3DV3 - SN4047; ConvF(1, 1, 1); Calibrated: 2018/1/8;
- Sensor-Surface: (Fix Surface)
- Electronics: DAE4 Sn1424; Calibrated: 2018/1/18
- Phantom: HAC Test Arch with AMCC; Type: SD HAC P01 BA;
- Measurement SW: DASY52, Version 52.10 (0);SEMCAD X Version 14.6.10 (7417)

### E Scan - ER3D: 15 mm from Probe Center to the Device/Hearing Aid Compatibility Test

(101x101x1): Interpolated grid: dx=0.5000 mm, dy=0.5000 mm

Device Reference Point: 0, 0, -6.3 mm

Reference Value = 27.55 V/m; Power Drift = 0.02 dB

Applied MIF = 0.12 dB

RF audio interference level = 29.80 dBV/m

**Emission category: M4**

MIF scaled E-field

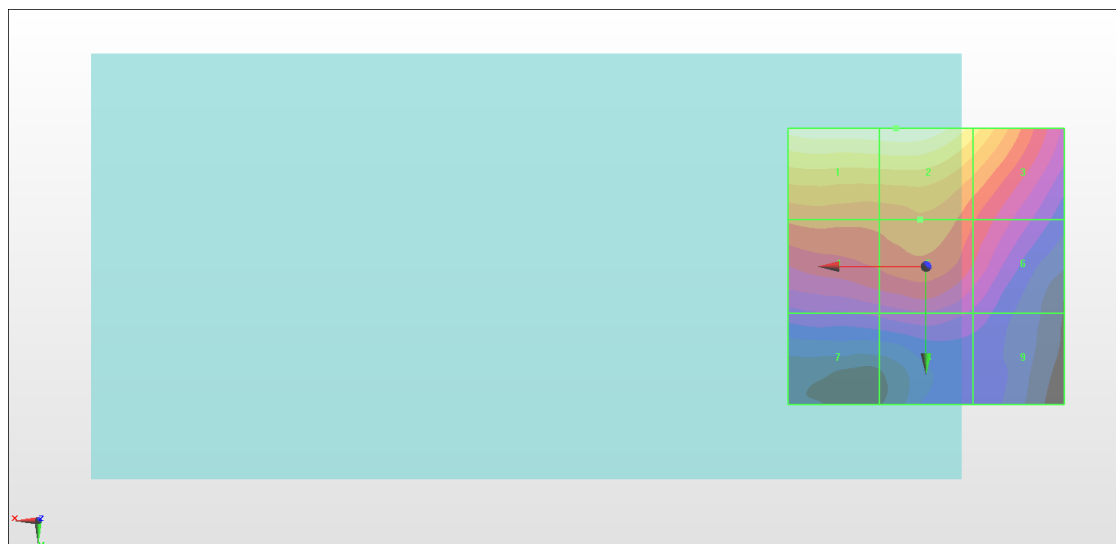
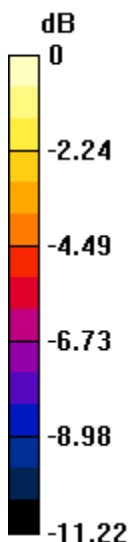
Grid 1 <b>M4</b> <b>29.7 dBV/m</b>	Grid 2 <b>M4</b> <b>29.8 dBV/m</b>	Grid 3 <b>M4</b> <b>27.95 dBV/m</b>
Grid 4 <b>M4</b> <b>25.62 dBV/m</b>	Grid 5 <b>M4</b> <b>25.93 dBV/m</b>	Grid 6 <b>M4</b> <b>24.7 dBV/m</b>
Grid 7 <b>M4</b> <b>22.58 dBV/m</b>	Grid 8 <b>M4</b> <b>22.98 dBV/m</b>	Grid 9 <b>M4</b> <b>22.17 dBV/m</b>

**Cursor:**

Total = 29.80 dBV/m

E Category: M4

Location: 5.5, -25, 7.7 mm



0 dB = 30.92 V/m = 29.80 dBV/m

### #14\_HAC\_E\_WLAN2.4GHz\_802.11g\_6Mbps\_Ch6

Communication System: 802.11g ; Frequency: 2437 MHz;Duty Cycle: 1:12.5893

Medium: Air Medium parameters used:  $\sigma = 0$  S/m,  $\epsilon_r = 1$ ;  $\rho = 0$  kg/m<sup>3</sup>

Ambient Temperature : 23.4 °C

DASY5 Configuration:

- Probe: EF3DV3 - SN4047; ConvF(1, 1, 1); Calibrated: 2018/1/8;
- Sensor-Surface: (Fix Surface)
- Electronics: DAE4 Sn1424; Calibrated: 2018/1/18
- Phantom: HAC Test Arch with AMCC; Type: SD HAC P01 BA;
- Measurement SW: DASY52, Version 52.10 (0);SEMCAD X Version 14.6.10 (7417)

### E Scan - ER3D: 15 mm from Probe Center to the Device/Hearing Aid Compatibility Test

(101x101x1): Interpolated grid: dx=0.5000 mm, dy=0.5000 mm

Device Reference Point: 0, 0, -6.3 mm

Reference Value = 29.86 V/m; Power Drift = -0.04 dB

Applied MIF = 0.12 dB

RF audio interference level = 29.74 dBV/m

**Emission category: M4**

MIF scaled E-field

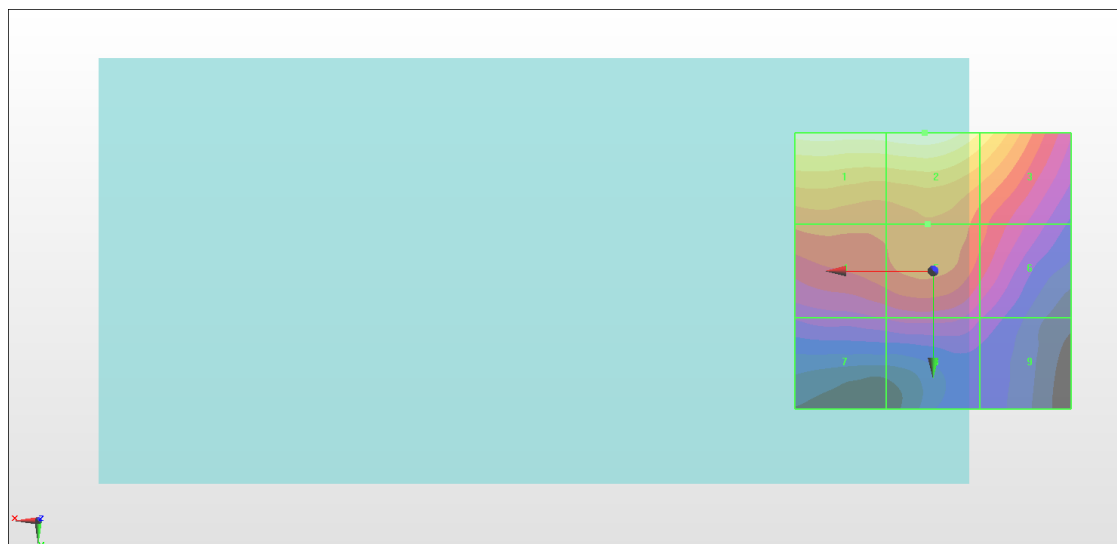
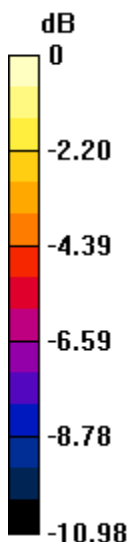
Grid 1 <b>M4</b> <b>29.48 dBV/m</b>	Grid 2 <b>M4</b> <b>29.74 dBV/m</b>	Grid 3 <b>M4</b> <b>28.25 dBV/m</b>
Grid 4 <b>M4</b> <b>25.68 dBV/m</b>	Grid 5 <b>M4</b> <b>26.02 dBV/m</b>	Grid 6 <b>M4</b> <b>24.97 dBV/m</b>
Grid 7 <b>M4</b> <b>23.24 dBV/m</b>	Grid 8 <b>M4</b> <b>23.52 dBV/m</b>	Grid 9 <b>M4</b> <b>22.53 dBV/m</b>

**Cursor:**

Total = 29.74 dBV/m

E Category: M4

Location: 1.5, -25, 7.7 mm



0 dB = 30.71 V/m = 29.75 dBV/m

### #15\_HAC\_E\_WLAN2.4GHz\_802.11g\_6Mbps\_Ch11

Communication System: 802.11g ; Frequency: 2462 MHz;Duty Cycle: 1:12.5893

Medium: Air Medium parameters used:  $\sigma = 0$  S/m,  $\epsilon_r = 1$ ;  $\rho = 0$  kg/m<sup>3</sup>

Ambient Temperature : 23.4 °C

DASY5 Configuration:

- Probe: EF3DV3 - SN4047; ConvF(1, 1, 1); Calibrated: 2018/1/8;
- Sensor-Surface: (Fix Surface)
- Electronics: DAE4 Sn1424; Calibrated: 2018/1/18
- Phantom: HAC Test Arch with AMCC; Type: SD HAC P01 BA;
- Measurement SW: DASY52, Version 52.10 (0);SEMCAD X Version 14.6.10 (7417)

### E Scan - ER3D: 15 mm from Probe Center to the Device/Hearing Aid Compatibility Test

(101x101x1): Interpolated grid: dx=0.5000 mm, dy=0.5000 mm

Device Reference Point: 0, 0, -6.3 mm

Reference Value = 30.73 V/m; Power Drift = -0.01 dB

Applied MIF = 0.12 dB

RF audio interference level = 29.39 dBV/m

**Emission category: M4**

MIF scaled E-field

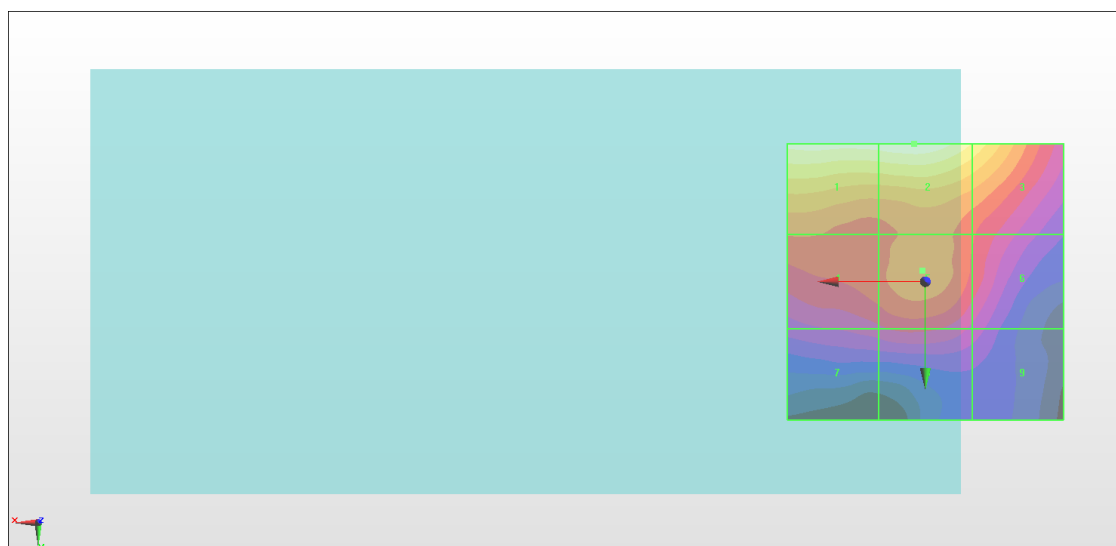
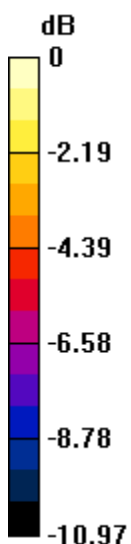
Grid 1 <b>M4</b> <b>29.12 dBV/m</b>	Grid 2 <b>M4</b> <b>29.39 dBV/m</b>	Grid 3 <b>M4</b> <b>27.9 dBV/m</b>
Grid 4 <b>M4</b> <b>25.08 dBV/m</b>	Grid 5 <b>M4</b> <b>25.52 dBV/m</b>	Grid 6 <b>M4</b> <b>24.4 dBV/m</b>
Grid 7 <b>M4</b> <b>23.36 dBV/m</b>	Grid 8 <b>M4</b> <b>23.78 dBV/m</b>	Grid 9 <b>M4</b> <b>22.62 dBV/m</b>

**Cursor:**

Total = 29.39 dBV/m

E Category: M4

Location: 2, -25, 7.7 mm



0 dB = 29.49 V/m = 29.39 dBV/m