

16_Bluetooth_1Mbps_Right Cheek_0mm_Ch0

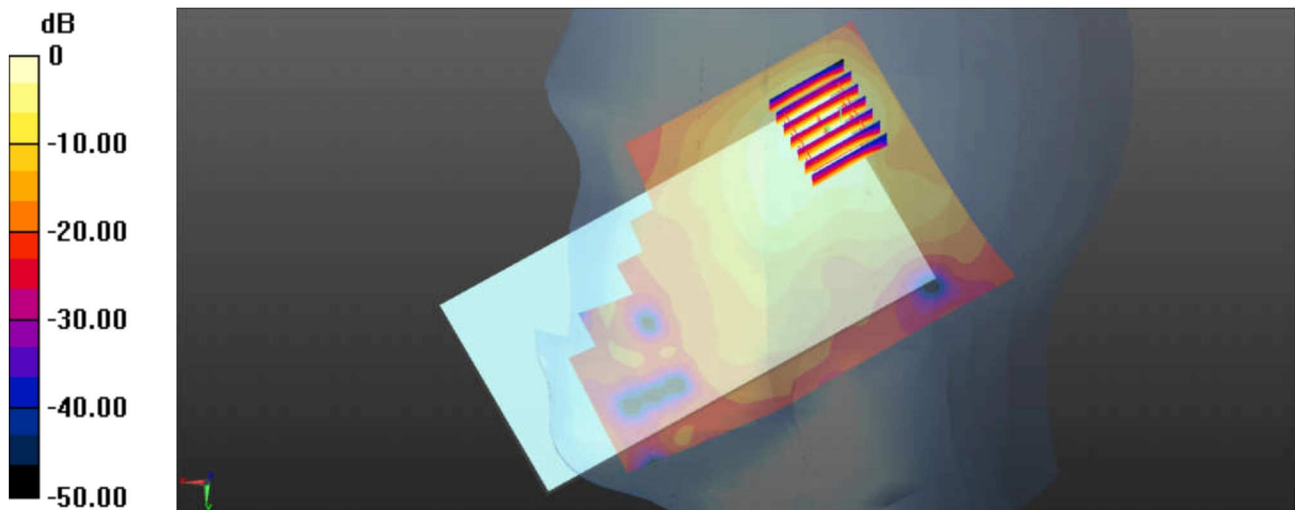
Communication System: UID 0, Bluetooth (0); Frequency: 2402 MHz; Duty Cycle: 1:1.298
Medium: HSL_2450 Medium parameters used: $f = 2402$ MHz; $\sigma = 1.768$ S/m; $\epsilon_r = 38.517$; $\rho = 1000$ kg/m³
Ambient Temperature : 23.2 °C; Liquid Temperature : 22.7 °C

DASY5 Configuration:

- Probe: EX3DV4 - SN3954; ConvF(7.49, 7.49, 7.49); Calibrated: 2018.1.31;
- Sensor-Surface: 2mm (Mechanical Surface Detection)
- Electronics: DAE4 Sn1279; Calibrated: 2018.1.3
- Phantom: SAM3; Type: SAM; Serial: TP-1839
- Measurement SW: DASY52, Version 52.8 (8); SEMCAD X Version 14.6.10 (7331)

Ch0/Area Scan (91x151x1): Interpolated grid: dx=1.200 mm, dy=1.200 mm
Maximum value of SAR (interpolated) = 0.631 W/kg

Ch0/Zoom Scan (7x7x7)/Cube 0: Measurement grid: dx=5mm, dy=5mm, dz=5mm
Reference Value = 7.261 V/m; Power Drift = 0.07 dB
Peak SAR (extrapolated) = 0.741 W/kg
SAR(1 g) = 0.397 W/kg; SAR(10 g) = 0.206 W/kg
Maximum value of SAR (measured) = 0.555 W/kg



0 dB = 0.631 W/kg = -2.00 dBW/kg

17_GSM850_GPRS 3 Tx slots_Back_5mm_Ch251

Communication System: UID 0, GPRS/EDGE (3 Tx slots) (0); Frequency: 848.8 MHz; Duty Cycle: 1:2.77
 Medium: MSL_835 Medium parameters used: $f = 848.8$ MHz; $\sigma = 0.986$ S/m; $\epsilon_r = 55.026$;

$\rho = 1000$ kg/m³

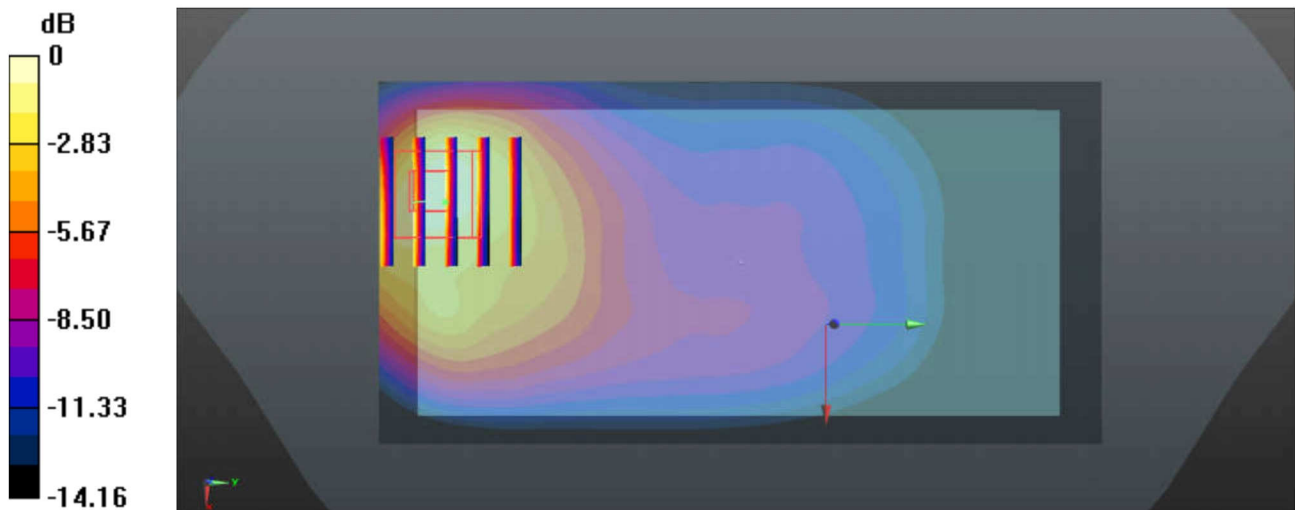
Ambient Temperature : 23.5 °C; Liquid Temperature : 22.8 °C

DASY5 Configuration:

- Probe: EX3DV4 - SN3954; ConvF(10.02, 10.02, 10.02); Calibrated: 2018.1.31;
- Sensor-Surface: 2mm (Mechanical Surface Detection)
- Electronics: DAE4 Sn1279; Calibrated: 2018.1.3
- Phantom: SAM1; Type: SAM; Serial: TP-1842
- Measurement SW: DASY52, Version 52.8 (8); SEMCAD X Version 14.6.10 (7331)

Ch251/Area Scan (61x121x1): Interpolated grid: dx=1.500 mm, dy=1.500 mm
 Maximum value of SAR (interpolated) = 0.938 W/kg

Ch251/Zoom Scan (5x5x7)/Cube 0: Measurement grid: dx=8mm, dy=8mm, dz=5mm
 Reference Value = 11.11 V/m; Power Drift = 0.19 dB
 Peak SAR (extrapolated) = 1.34 W/kg
SAR(1 g) = 0.695 W/kg; SAR(10 g) = 0.375 W/kg
 Maximum value of SAR (measured) = 0.986 W/kg



0 dB = 0.938 W/kg = -0.28 dBW/kg

18_GSM1900_GPRS 4 Tx slots_Bottom Side_5mm_Ch661

Communication System: UID 0, GPRS/EDGE (4 Tx slots) (0); Frequency: 1880 MHz; Duty Cycle: 1:2.08
 Medium: MSL_1900 Medium parameters used: $f = 1880$ MHz; $\sigma = 1.486$ S/m; $\epsilon_r = 52.848$;

$\rho = 1000$ kg/m³

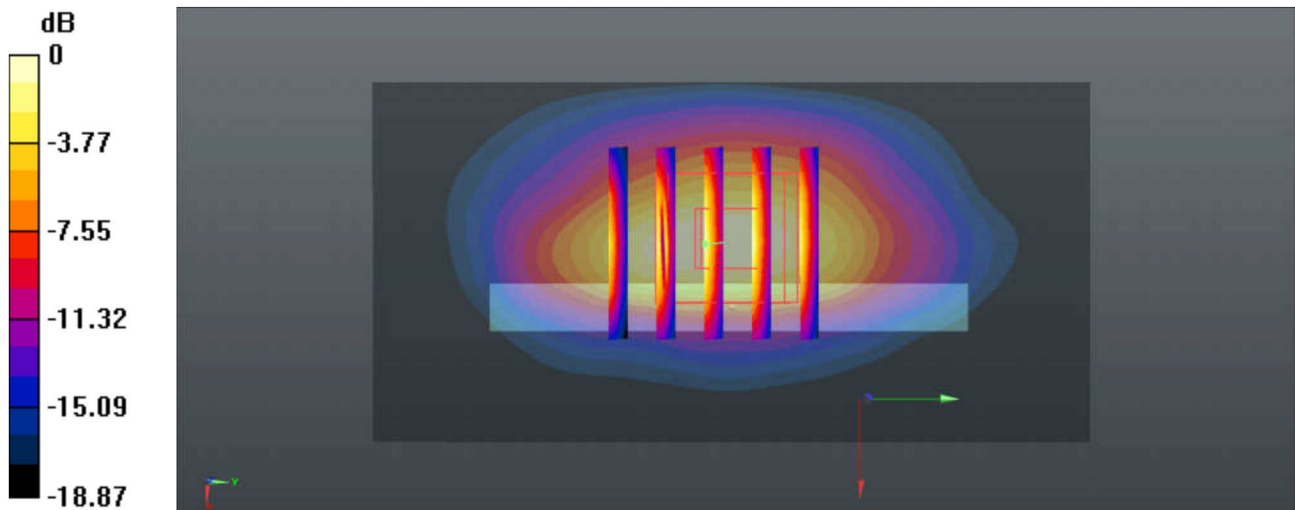
Ambient Temperature : 23.2 °C; Liquid Temperature : 22.8 °C

DASY5 Configuration:

- Probe: EX3DV4 - SN3954; ConvF(8.03, 8.03, 8.03); Calibrated: 2018.1.31;
- Sensor-Surface: 2mm (Mechanical Surface Detection)
- Electronics: DAE4 Sn1279; Calibrated: 2018.1.3
- Phantom: SAM3; Type: SAM; Serial: TP-1839
- Measurement SW: DASY52, Version 52.8 (8); SEMCAD X Version 14.6.10 (7331)

Ch661/Area Scan (41x81x1): Interpolated grid: dx=1.500 mm, dy=1.500 mm
 Maximum value of SAR (interpolated) = 0.933 W/kg

Ch661/Zoom Scan (5x5x7)/Cube 0: Measurement grid: dx=8mm, dy=8mm, dz=5mm
 Reference Value = 12.97 V/m; Power Drift = 0.07 dB
 Peak SAR (extrapolated) = 1.10 W/kg
SAR(1 g) = 0.655 W/kg; SAR(10 g) = 0.330 W/kg
 Maximum value of SAR (measured) = 0.894 W/kg



0 dB = 0.933 W/kg = -0.30 dBW/kg

19_WCDMA Band V_RMC12.2Kbps_Back_5mm_Ch4233

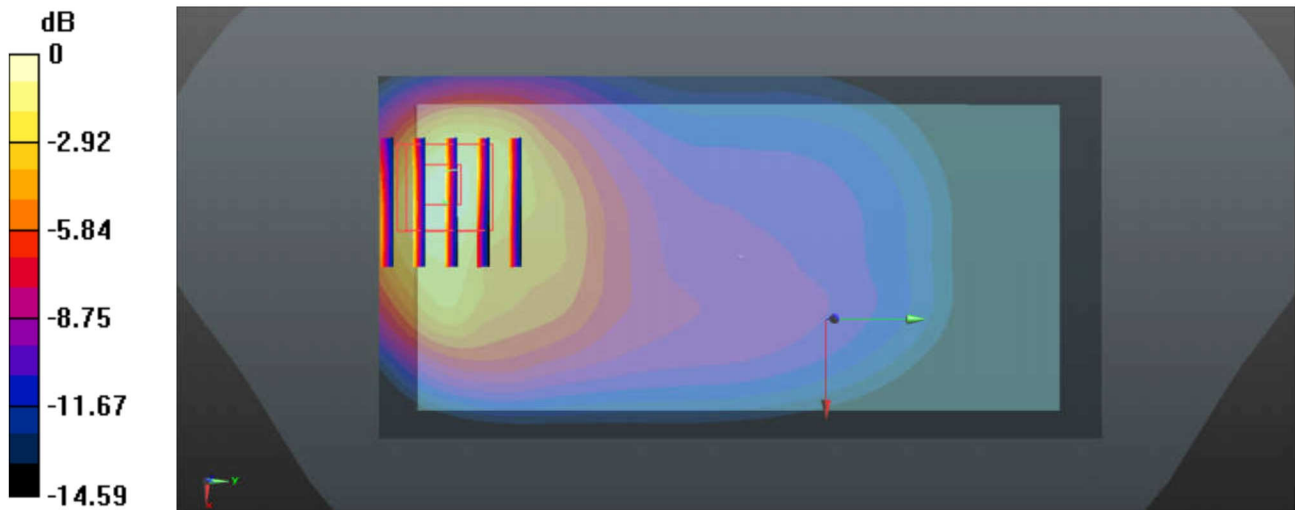
Communication System: UID 0, UMTS (0); Frequency: 846.6 MHz; Duty Cycle: 1:1
 Medium: MSL_835 Medium parameters used: $f = 846.6 \text{ MHz}$; $\sigma = 0.984 \text{ S/m}$; $\epsilon_r = 55.04$;
 $\rho = 1000 \text{ kg/m}^3$
 Ambient Temperature : $23.5 \text{ }^\circ\text{C}$; Liquid Temperature : $22.8 \text{ }^\circ\text{C}$

DASY5 Configuration:

- Probe: EX3DV4 - SN3954; ConvF(10.02, 10.02, 10.02); Calibrated: 2018.1.31;
- Sensor-Surface: 2mm (Mechanical Surface Detection)
- Electronics: DAE4 Sn1279; Calibrated: 2018.1.3
- Phantom: SAM1; Type: SAM; Serial: TP-1842
- Measurement SW: DASY52, Version 52.8 (8); SEMCAD X Version 14.6.10 (7331)

Ch4233/Area Scan (61x121x1): Interpolated grid: $dx=1.500 \text{ mm}$, $dy=1.500 \text{ mm}$
 Maximum value of SAR (interpolated) = 1.41 W/kg

Ch4233/Zoom Scan (5x5x7)/Cube 0: Measurement grid: $dx=8\text{mm}$, $dy=8\text{mm}$, $dz=5\text{mm}$
 Reference Value = 12.98 V/m ; Power Drift = 0.03 dB
 Peak SAR (extrapolated) = 1.85 W/kg
SAR(1 g) = 0.923 W/kg ; SAR(10 g) = 0.493 W/kg
 Maximum value of SAR (measured) = 1.36 W/kg



$0 \text{ dB} = 1.41 \text{ W/kg} = 1.49 \text{ dBW/kg}$

20_WCDMA Band II_RMC12.2Kbps_Bottom Side_5mm_Ch9538

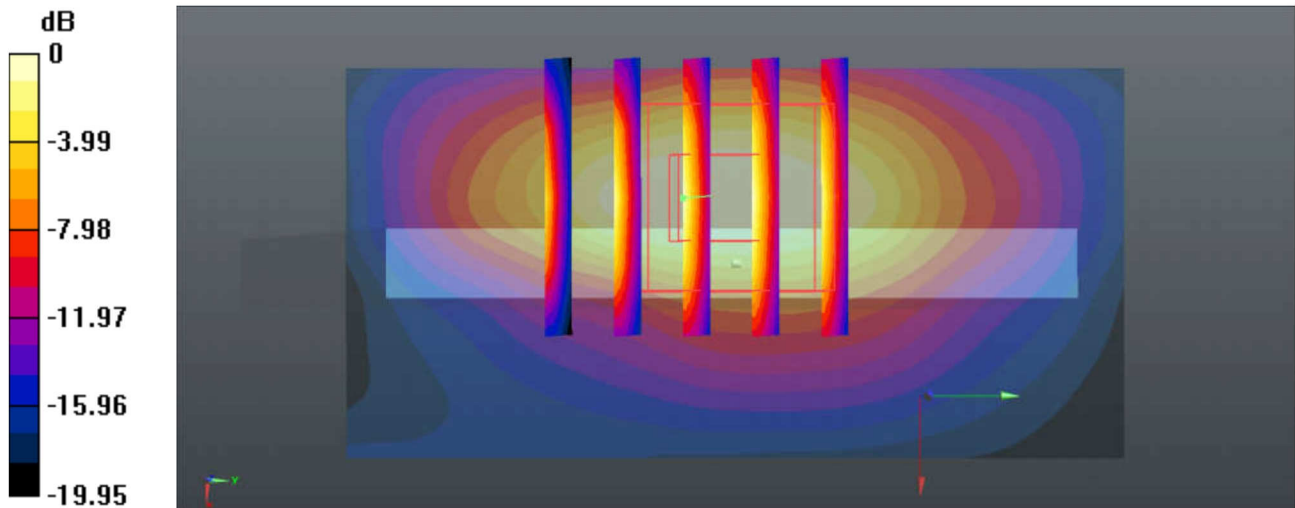
Communication System: UID 0, UMTS (0); Frequency: 1907.6 MHz; Duty Cycle: 1:1
 Medium: MSL_1900 Medium parameters used: $f = 1907.6$ MHz; $\sigma = 1.524$ S/m; $\epsilon_r = 52.799$;
 $\rho = 1000$ kg/m³
 Ambient Temperature : 23.2 °C; Liquid Temperature : 22.8 °C

DASY5 Configuration:

- Probe: EX3DV4 - SN3954; ConvF(8.03, 8.03, 8.03); Calibrated: 2018.1.31;
- Sensor-Surface: 2mm (Mechanical Surface Detection)
- Electronics: DAE4 Sn1279; Calibrated: 2018.1.3
- Phantom: SAM3; Type: SAM; Serial: TP-1839
- Measurement SW: DASY52, Version 52.8 (8); SEMCAD X Version 14.6.10 (7331)

Ch9538/Area Scan (31x61x1): Interpolated grid: dx=1.500 mm, dy=1.500 mm
 Maximum value of SAR (interpolated) = 0.978 W/kg

Ch9538/Zoom Scan (5x5x7)/Cube 0: Measurement grid: dx=8mm, dy=8mm, dz=5mm
 Reference Value = 19.62 V/m; Power Drift = 0.04 dB
 Peak SAR (extrapolated) = 1.19 W/kg
SAR(1 g) = 0.681 W/kg; SAR(10 g) = 0.347 W/kg
 Maximum value of SAR (measured) = 0.951 W/kg



0 dB = 0.978 W/kg = -0.10 dBW/kg

21_CDMA2000 BC0_RTAP153.6Kbps_Back_5mm_Ch777

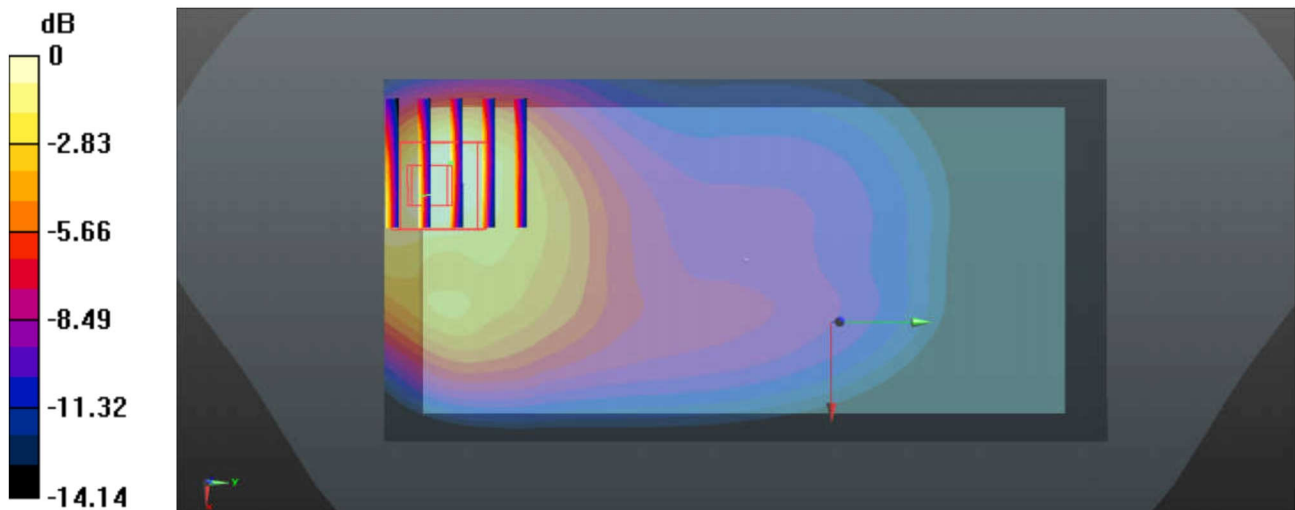
Communication System: UID 0, CDMA2000 (0); Frequency: 848.31 MHz; Duty Cycle: 1:1
 Medium: MSL_835 Medium parameters used : $f = 848.31$ MHz; $\sigma = 0.985$ S/m; $\epsilon_r = 55.029$;
 $\rho = 1000$ kg/m³
 Ambient Temperature : 23.5 °C; Liquid Temperature : 22.8 °C

DASY5 Configuration:

- Probe: EX3DV4 - SN3954; ConvF(10.02, 10.02, 10.02); Calibrated: 2018.1.31;
- Sensor-Surface: 2mm (Mechanical Surface Detection)
- Electronics: DAE4 Sn1279; Calibrated: 2018.1.3
- Phantom: SAM1; Type: SAM; Serial: TP-1842
- Measurement SW: DASY52, Version 52.8 (8); SEMCAD X Version 14.6.10 (7331)

Ch777/Area Scan (61x121x1): Interpolated grid: dx=1.500 mm, dy=1.500 mm
 Maximum value of SAR (interpolated) = 0.741 W/kg

Ch777/Zoom Scan (5x5x7)/Cube 0: Measurement grid: dx=8mm, dy=8mm, dz=5mm
 Reference Value = 10.08 V/m; Power Drift = 0.10 dB
 Peak SAR (extrapolated) = 1.18 W/kg
SAR(1 g) = 0.595 W/kg; SAR(10 g) = 0.324 W/kg
 Maximum value of SAR (measured) = 0.887 W/kg



0 dB = 0.741 W/kg = -1.30 dBW/kg

22_CDMA2000 BC1_RTAP153.6Kbps_Bottom Side_5mm_Ch25

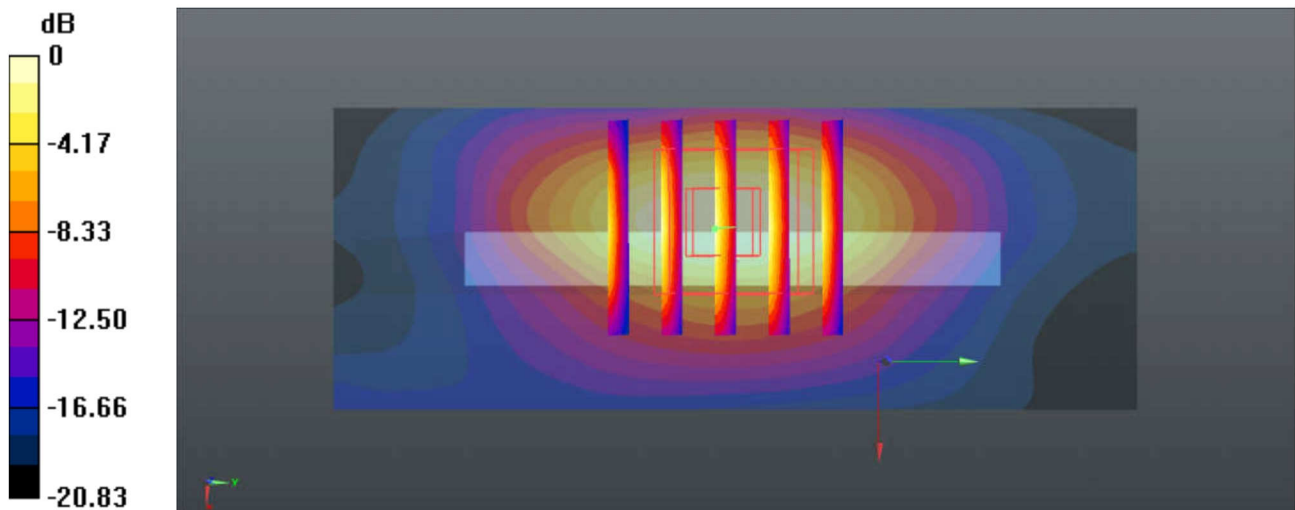
Communication System: UID 0, CDMA2000 (0); Frequency: 1851.25 MHz; Duty Cycle: 1:1
 Medium: MSL_1900 Medium parameters used: $f = 1851.25$ MHz; $\sigma = 1.446$ S/m; $\epsilon_r = 52.956$;
 $\rho = 1000$ kg/m³
 Ambient Temperature : 23.2 °C; Liquid Temperature : 22.8 °C

DASY5 Configuration:

- Probe: EX3DV4 - SN3954; ConvF(8.03, 8.03, 8.03); Calibrated: 2018.1.31;
- Sensor-Surface: 2mm (Mechanical Surface Detection)
- Electronics: DAE4 Sn1279; Calibrated: 2018.1.3
- Phantom: SAM3; Type: SAM; Serial: TP-1839
- Measurement SW: DASY52, Version 52.8 (8); SEMCAD X Version 14.6.10 (7331)

Ch25/Area Scan (31x81x1): Interpolated grid: dx=1.500 mm, dy=1.500 mm
 Maximum value of SAR (interpolated) = 0.986 W/kg

Ch25/Zoom Scan (5x5x7)/Cube 0: Measurement grid: dx=8mm, dy=8mm, dz=5mm
 Reference Value = 22.69 V/m; Power Drift = 0.07 dB
 Peak SAR (extrapolated) = 1.17 W/kg
SAR(1 g) = 0.682 W/kg; SAR(10 g) = 0.349 W/kg
 Maximum value of SAR (measured) = 0.956 W/kg



0 dB = 0.986 W/kg = -0.06 dBW/kg

23_LTE Band 13_10M_QPSK_1RB_0Offset_Back_5mm_Ch23230

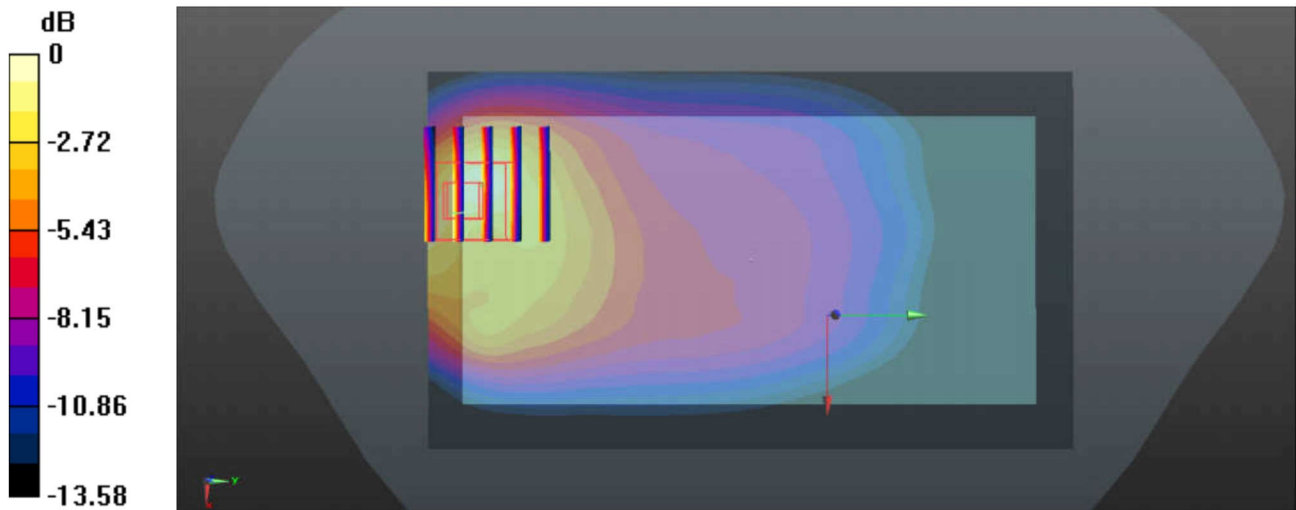
Communication System: UID 0, FDD_LTE (0); Frequency: 782 MHz; Duty Cycle: 1:1
 Medium: MSL_835 Medium parameters used: $f = 782 \text{ MHz}$; $\sigma = 0.92 \text{ S/m}$; $\epsilon_r = 55.684$;
 $\rho = 1000 \text{ kg/m}^3$
 Ambient Temperature : $23.5 \text{ }^\circ\text{C}$; Liquid Temperature : $22.8 \text{ }^\circ\text{C}$

DASY5 Configuration:

- Probe: EX3DV4 - SN3954; ConvF(10.21, 10.21, 10.21); Calibrated: 2018.1.31;
- Sensor-Surface: 2mm (Mechanical Surface Detection)
- Electronics: DAE4 Sn1279; Calibrated: 2018.1.3
- Phantom: SAM1; Type: SAM; Serial: TP-1842
- Measurement SW: DASY52, Version 52.8 (8); SEMCAD X Version 14.6.10 (7331)

Ch23230/Area Scan (71x121x1): Interpolated grid: $dx=1.500 \text{ mm}$, $dy=1.500 \text{ mm}$
 Maximum value of SAR (interpolated) = 0.967 W/kg

Ch23230/Zoom Scan (5x5x7)/Cube 0: Measurement grid: $dx=8\text{mm}$, $dy=8\text{mm}$, $dz=5\text{mm}$
 Reference Value = 13.91 V/m ; Power Drift = 0.03 dB
 Peak SAR (extrapolated) = 1.45 W/kg
SAR(1 g) = 0.722 W/kg ; SAR(10 g) = 0.392 W/kg
 Maximum value of SAR (measured) = 1.07 W/kg



0 dB = $0.967 \text{ W/kg} = -0.15 \text{ dBW/kg}$

24_LTE Band 5_10M_QPSK_1RB_25Offset_Back_5mm_Ch20525

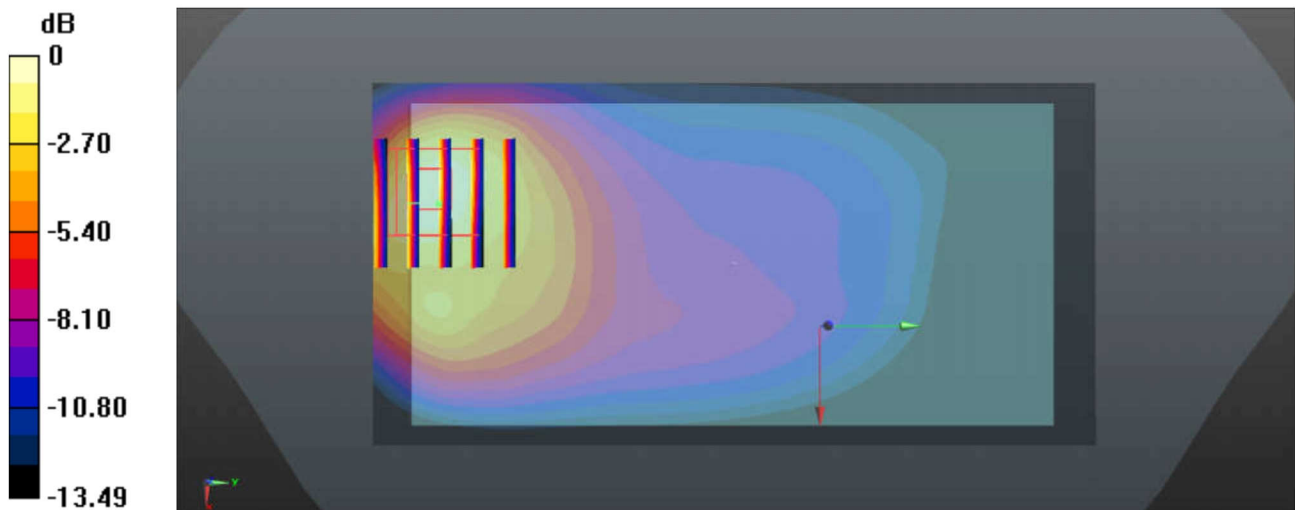
Communication System: UID 0, FDD_LTE (0); Frequency: 836.5 MHz; Duty Cycle: 1:1
 Medium: MSL_835 Medium parameters used : $f = 836.5 \text{ MHz}$; $\sigma = 0.974 \text{ S/m}$; $\epsilon_r = 55.148$;
 $\rho = 1000 \text{ kg/m}^3$
 Ambient Temperature : $23.5 \text{ }^\circ\text{C}$; Liquid Temperature : $22.8 \text{ }^\circ\text{C}$

DASY5 Configuration:

- Probe: EX3DV4 - SN3954; ConvF(10.02, 10.02, 10.02); Calibrated: 2018.1.31;
- Sensor-Surface: 2mm (Mechanical Surface Detection)
- Electronics: DAE4 Sn1279; Calibrated: 2018.1.3
- Phantom: SAM1; Type: SAM; Serial: TP-1842
- Measurement SW: DASY52, Version 52.8 (8); SEMCAD X Version 14.6.10 (7331)

Ch20525/Area Scan (61x121x1): Interpolated grid: $dx=1.500 \text{ mm}$, $dy=1.500 \text{ mm}$
 Maximum value of SAR (interpolated) = 1.26 W/kg

Ch20525/Zoom Scan (5x5x7)/Cube 0: Measurement grid: $dx=8\text{mm}$, $dy=8\text{mm}$, $dz=5\text{mm}$
 Reference Value = 13.17 V/m ; Power Drift = 0.18 dB
 Peak SAR (extrapolated) = 1.78 W/kg
SAR(1 g) = 0.926 W/kg ; SAR(10 g) = 0.506 W/kg
 Maximum value of SAR (measured) = 1.30 W/kg



0 dB = $1.26 \text{ W/kg} = 1.00 \text{ dBW/kg}$

25_LTE Band 66_20M_QPSK_50RB_0Offset_Bottom Side_5mm_Ch132322

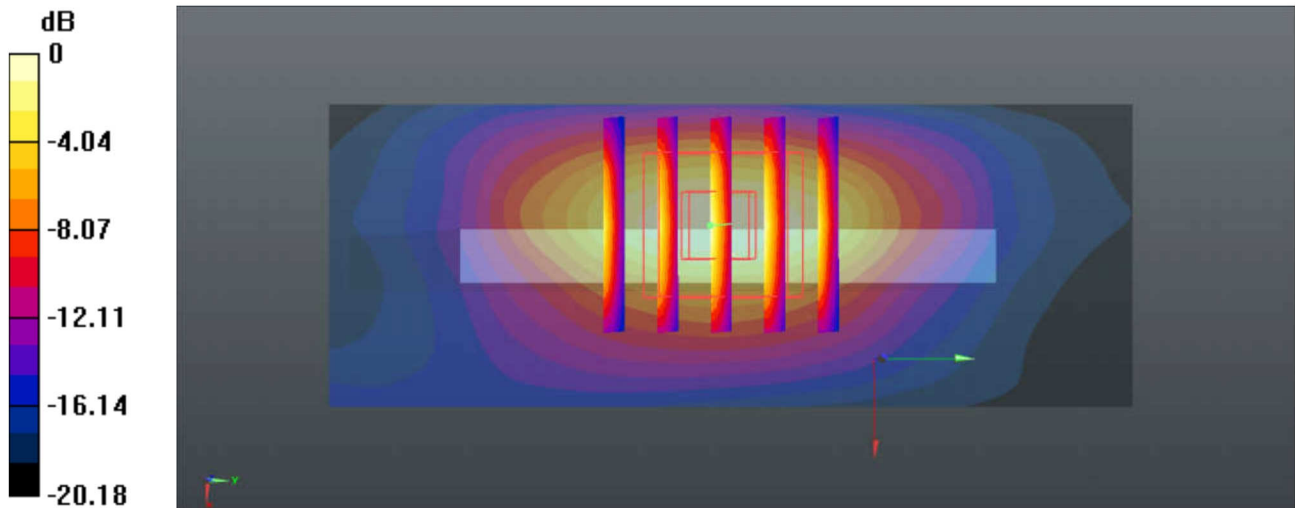
Communication System: UID 0, FDD_LTE (0); Frequency: 1745 MHz;Duty Cycle: 1:1
 Medium: MSL_1750 Medium parameters used: $f = 1745$ MHz; $\sigma = 1.438$ S/m; $\epsilon_r = 54.711$;
 $\rho = 1000$ kg/m³
 Ambient Temperature : 23.2 °C; Liquid Temperature : 22.7 °C

DASY5 Configuration:

- Probe: EX3DV4 - SN3954; ConvF(8.31, 8.31, 8.31); Calibrated: 2018.1.31;
- Sensor-Surface: 2mm (Mechanical Surface Detection)
- Electronics: DAE4 Sn1279; Calibrated: 2018.1.3
- Phantom: SAM3; Type: SAM; Serial: TP-1839
- Measurement SW: DASY52, Version 52.8 (8); SEMCAD X Version 14.6.10 (7331)

Ch132322/Area Scan (31x81x1): Interpolated grid: dx=1.500 mm, dy=1.500 mm
 Maximum value of SAR (interpolated) = 1.41 W/kg

Ch132322/Zoom Scan (5x5x7)/Cube 0: Measurement grid: dx=8mm, dy=8mm, dz=5mm
 Reference Value = 27.80 V/m; Power Drift = 0.05 dB
 Peak SAR (extrapolated) = 1.67 W/kg
SAR(1 g) = 0.975 W/kg; SAR(10 g) = 0.501 W/kg
 Maximum value of SAR (measured) = 1.36 W/kg



0 dB = 1.41 W/kg = 1.49 dBW/kg

26_LTE Band 2_20M_QPSK_1RB_0Offset_Bottom Side_5mm_Ch18700

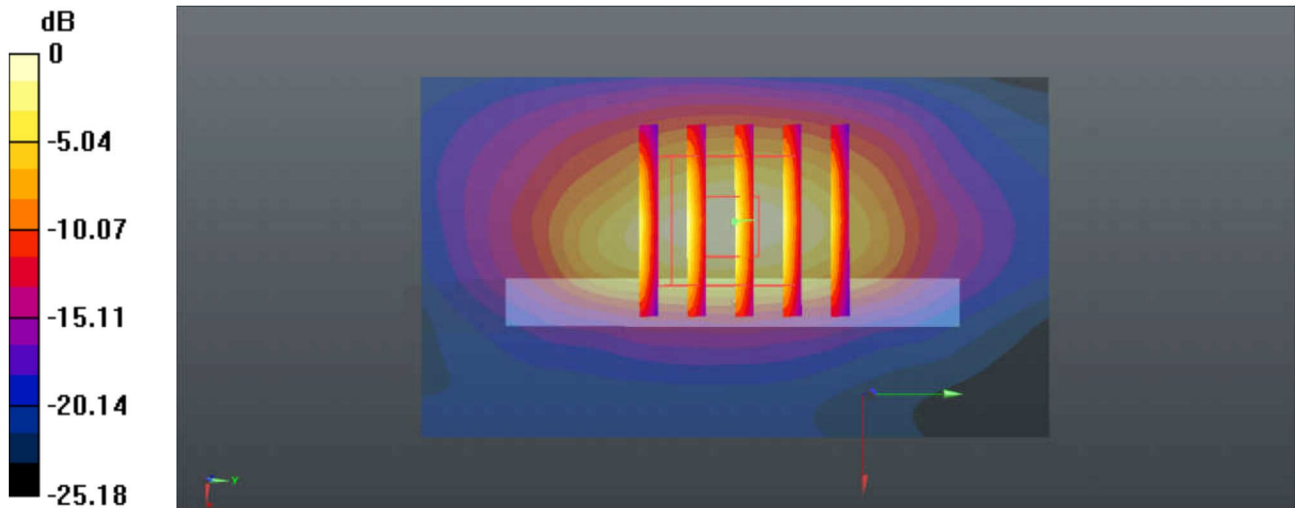
Communication System: UID 0, FDD_LTE (0); Frequency: 1860 MHz; Duty Cycle: 1:1
 Medium: MSL_1900 Medium parameters used: $f = 1860$ MHz; $\sigma = 1.458$ S/m; $\epsilon_r = 52.922$;
 $\rho = 1000$ kg/m³
 Ambient Temperature : 23.2 °C; Liquid Temperature : 22.8 °C

DASY5 Configuration:

- Probe: EX3DV4 - SN3954; ConvF(8.03, 8.03, 8.03); Calibrated: 2018.1.31;
- Sensor-Surface: 2mm (Mechanical Surface Detection)
- Electronics: DAE4 Sn1279; Calibrated: 2018.1.3
- Phantom: SAM3; Type: SAM; Serial: TP-1839
- Measurement SW: DASY52, Version 52.8 (8); SEMCAD X Version 14.6.10 (7331)

Ch18700/Area Scan (41x71x1): Interpolated grid: dx=1.500 mm, dy=1.500 mm
 Maximum value of SAR (interpolated) = 1.10 W/kg

Ch18700/Zoom Scan (5x5x7)/Cube 0: Measurement grid: dx=8mm, dy=8mm, dz=5mm
 Reference Value = 10.99 V/m; Power Drift = 0.01 dB
 Peak SAR (extrapolated) = 1.13 W/kg
SAR(1 g) = 0.667 W/kg; SAR(10 g) = 0.343 W/kg
 Maximum value of SAR (measured) = 0.926 W/kg



0 dB = 1.10 W/kg = 0.41 dBW/kg

27_LTE Band 7_20M_QPSK_50RB_0Offset_Back_5mm_Ch20850

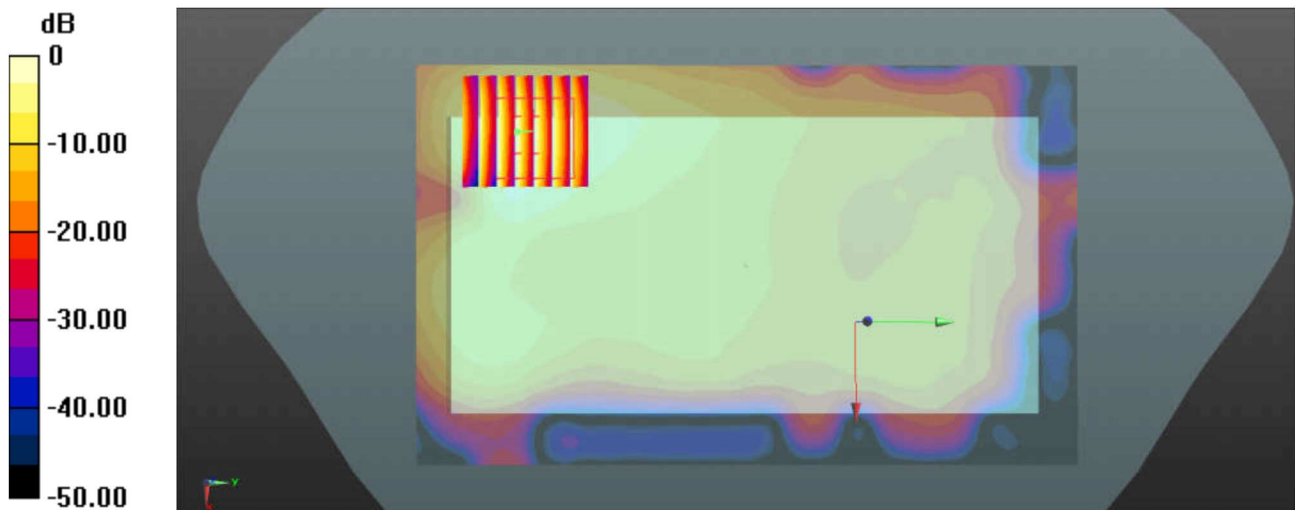
Communication System: UID 0, FDD_LTE (0); Frequency: 2510 MHz; Duty Cycle: 1:1
Medium: MSL_2600 Medium parameters used: $f = 2510$ MHz; $\sigma = 2.061$ S/m; $\epsilon_r = 53.228$;
 $\rho = 1000$ kg/m³
Ambient Temperature : 23.5 °C; Liquid Temperature : 22.8 °C

DASY5 Configuration:

- Probe: EX3DV4 - SN3954; ConvF(6.92, 6.92, 6.92); Calibrated: 2018.1.31;
- Sensor-Surface: 2mm (Mechanical Surface Detection)
- Electronics: DAE4 Sn1279; Calibrated: 2018.1.3
- Phantom: SAM3; Type: SAM; Serial: TP-1839
- Measurement SW: DASY52, Version 52.8 (8); SEMCAD X Version 14.6.10 (7331)

Ch20850/Area Scan (91x151x1): Interpolated grid: dx=1.200 mm, dy=1.200 mm
Maximum value of SAR (interpolated) = 0.877 W/kg

Ch20850/Zoom Scan (7x7x7)/Cube 0: Measurement grid: dx=5mm, dy=5mm, dz=5mm
Reference Value = 4.977 V/m; Power Drift = 0.11 dB
Peak SAR (extrapolated) = 1.03 W/kg
SAR(1 g) = 0.521 W/kg; SAR(10 g) = 0.255 W/kg
Maximum value of SAR (measured) = 0.775 W/kg



0 dB = 0.877 W/kg = -0.57 dBW/kg