

System Check_Head_2450MHz_20180126

DUT: D2450V2-SN: 908

Communication System: UID 0, CW; Frequency: 2450 MHz; Duty Cycle: 1:1

Medium: HSL_2450_Medium parameters used: $f = 2450$ MHz; $\sigma = 1.865$ S/m; $\epsilon_r = 40.121$; $\rho = 1000$ kg/m³

Ambient Temperature : 23.6 °C ; Liquid Temperature : 22.3 °C

DASY5 Configuration:

- Probe: EX3DV4 - SN3935; ConvF(7.87, 7.87, 7.87); Calibrated: 2017/12/14;
- Sensor-Surface: 1.4mm (Mechanical Surface Detection)
- Electronics: DAE4 Sn1358; Calibrated: 2017/10/24
- Phantom: SAM1; Type: QD000P40CD; Serial: TP:1753
- Measurement SW: DASY52, Version 52.8 (8); SEMCAD X Version 14.6.10 (7372)

Pin=250mW/Area Scan (71x71x1): Interpolated grid: dx=1.200 mm, dy=1.200 mm

Maximum value of SAR (interpolated) = 23.5 W/kg

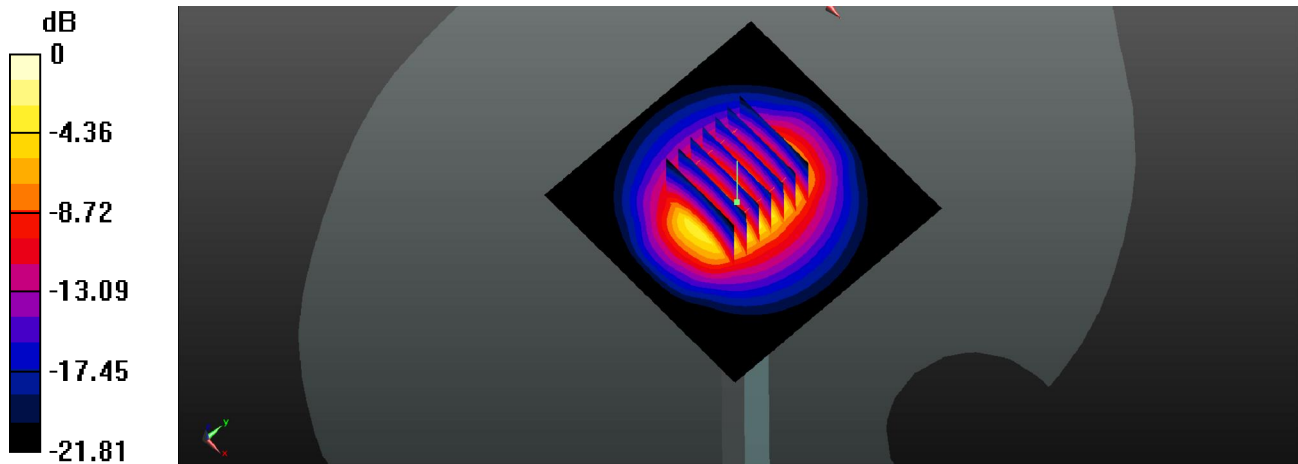
Pin=250mW/Zoom Scan (7x7x7)/Cube 0: Measurement grid: dx=5mm, dy=5mm, dz=5mm

Reference Value = 90.97 V/m; Power Drift = -0.01 dB

Peak SAR (extrapolated) = 28.4 W/kg

SAR(1 g) = 13.7 W/kg; SAR(10 g) = 6.31 W/kg

Maximum value of SAR (measured) = 23.1 W/kg



0 dB = 23.1 W/kg

System Check_Head_2600MHz_20180126

DUT: D2600V2-SN: 1112

Communication System: UID 0, CW; Frequency: 2600 MHz; Duty Cycle: 1:1

Medium: HSL_2600_Medium parameters used: $f = 2600$ MHz; $\sigma = 2.045$ S/m; $\epsilon_r = 39.312$; $\rho = 1000$ kg/m³

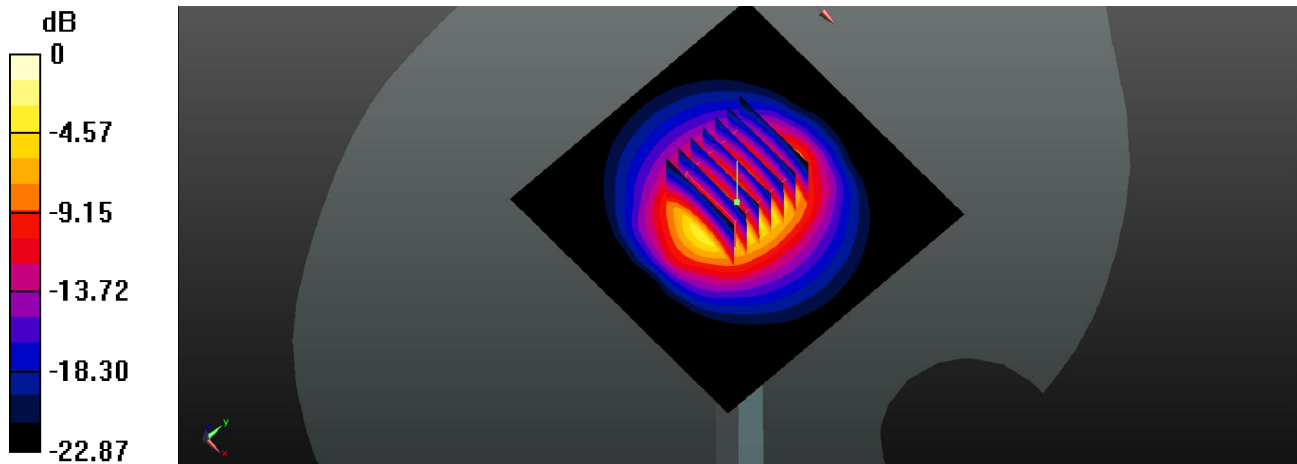
Ambient Temperature : 23.6 °C ; Liquid Temperature : 22.3 °C

DASY5 Configuration:

- Probe: EX3DV4 - SN3935; ConvF(7.67, 7.67, 7.67); Calibrated: 2017/12/14;
- Sensor-Surface: 1.4mm (Mechanical Surface Detection)
- Electronics: DAE4 Sn1358; Calibrated: 2017/10/24
- Phantom: SAM1; Type: QD000P40CD; Serial: TP:1753
- Measurement SW: DASY52, Version 52.8 (8); SEMCAD X Version 14.6.10 (7372)

Pin=250mW/Area Scan (81x81x1): Interpolated grid: dx=1.200 mm, dy=1.200 mm
Maximum value of SAR (interpolated) = 21.9 W/kg

Pin=250mW/Zoom Scan (7x7x7)/Cube 0: Measurement grid: dx=5mm, dy=5mm, dz=5mm
Reference Value = 88.21 V/m; Power Drift = 0.01 dB
Peak SAR (extrapolated) = 30.3 W/kg
SAR(1 g) = 14 W/kg; SAR(10 g) = 6.2 W/kg
Maximum value of SAR (measured) = 22.0 W/kg



0 dB = 22.0 W/kg

System Check_Head_5200MHz_20180127

DUT: D5GHzV2-SN: 1128

Communication System: UID 0, CW (0); Frequency: 5200 MHz; Duty Cycle: 1:1

Medium: HSL_5G_Medium parameters used: $f = 5200$ MHz; $\sigma = 4.542$ S/m; $\epsilon_r = 36.882$; $\rho = 1000$ kg/m³

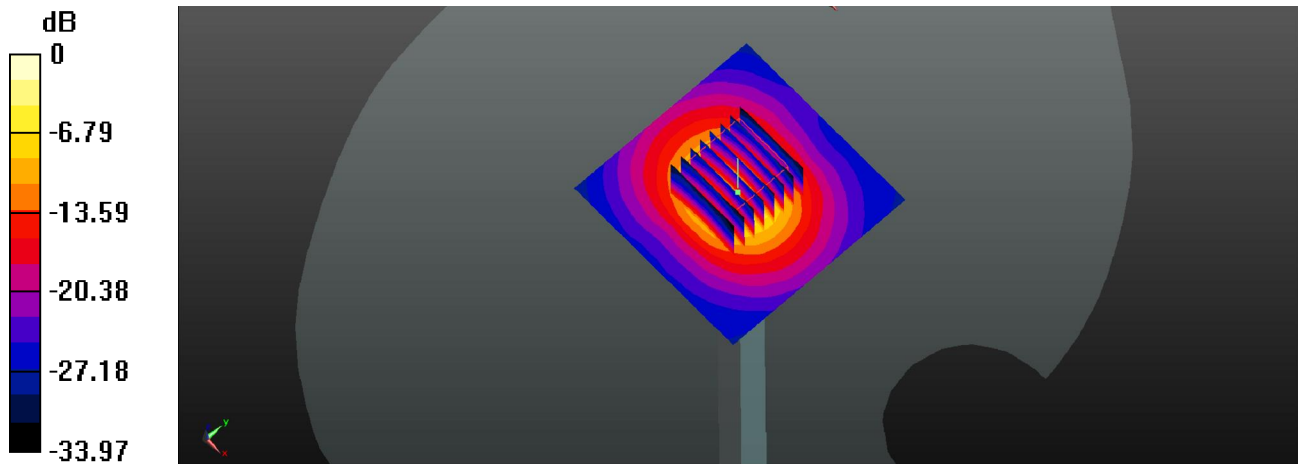
Ambient Temperature : 23.6 °C ; Liquid Temperature : 22.6 °C

DASY5 Configuration:

- Probe: EX3DV4 - SN3935; ConvF(5.91, 5.91, 5.91); Calibrated: 2016/11/28;
- Sensor-Surface: 1.4mm (Mechanical Surface Detection)
- Electronics: DAE4 Sn1358; Calibrated: 2017/10/24
- Phantom: SAM1; Type: QD000P40CD; Serial: TP:1753
- Measurement SW: DASY52, Version 52.8 (8); SEMCAD X Version 14.6.10 (7372)

Pin=100mw/Area Scan (71x71x1): Interpolated grid: dx=1.000 mm, dy=1.000 mm
Maximum value of SAR (interpolated) = 18.8 W/kg

Pin=100mw/Zoom Scan (8x8x7)/Cube 0: Measurement grid: dx=4mm, dy=4mm, dz=1.4mm
Reference Value = 44.87 V/m; Power Drift = -0.08 dB
Peak SAR (extrapolated) = 32.5 W/kg
SAR(1 g) = 7.91 W/kg; SAR(10 g) = 2.28 W/kg
Maximum value of SAR (measured) = 19.5 W/kg



0 dB = 19.5 W/kg

System Check_Head_5300MHz_20180127

DUT: D5GHzV2-SN: 1128

Communication System: UID 0, CW (0); Frequency: 5300 MHz; Duty Cycle: 1:1

Medium: HSL_5G_Medium parameters used: $f = 5300$ MHz; $\sigma = 4.642$ S/m; $\epsilon_r = 36.745$; $\rho = 1000$ kg/m³

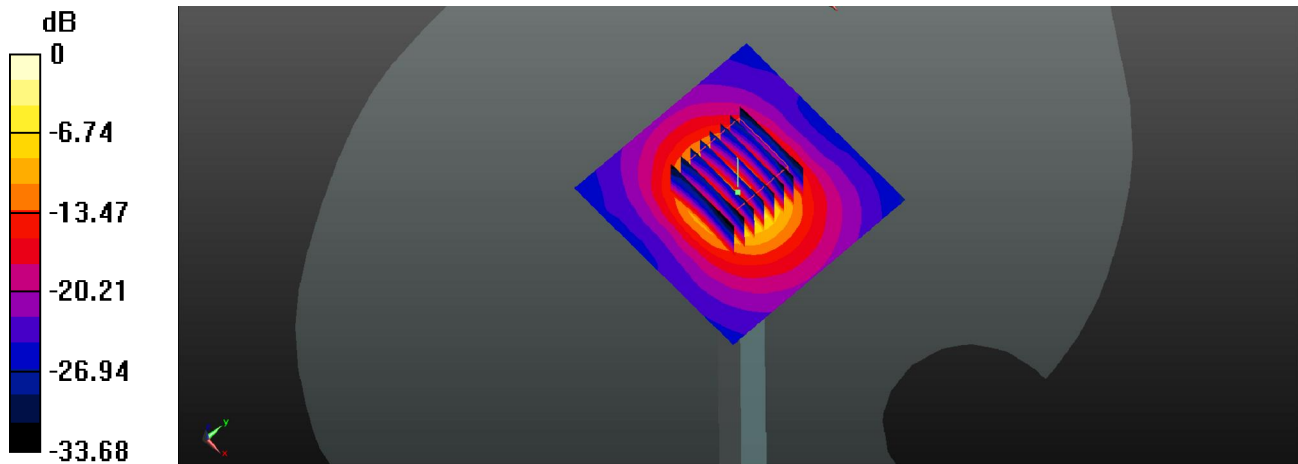
Ambient Temperature : 23.6 °C ; Liquid Temperature : 22.6 °C

DASY5 Configuration:

- Probe: EX3DV4 - SN3935; ConvF(5.63, 5.63, 5.63); Calibrated: 2017/12/14;
- Sensor-Surface: 1.4mm (Mechanical Surface Detection)
- Electronics: DAE4 Sn1358; Calibrated: 2017/10/24
- Phantom: SAM1; Type: QD000P40CD; Serial: TP:1753
- Measurement SW: DASY52, Version 52.8 (8); SEMCAD X Version 14.6.10 (7372)

Pin=100mw/Area Scan (71x71x1): Interpolated grid: dx=1.000 mm, dy=1.000 mm
Maximum value of SAR (interpolated) = 18.1 W/kg

Pin=100mw/Zoom Scan (8x8x7)/Cube 0: Measurement grid: dx=4mm, dy=4mm, dz=1.4mm
Reference Value = 41.99 V/m; Power Drift = -0.03 dB
Peak SAR (extrapolated) = 30.6 W/kg
SAR(1 g) = 7.52 W/kg; SAR(10 g) = 2.17 W/kg
Maximum value of SAR (measured) = 18.0 W/kg



0 dB = 18.0 W/kg

System Check_Head_5500MHz_20180127

DUT: D5GHZV2-SN: 1128

Communication System: UID 0, CW (0); Frequency: 5500 MHz;Duty Cycle: 1:1

Medium: HSL_5G_Medium parameters used: $f = 5500$ MHz; $\sigma = 4.838$ S/m; $\epsilon_r = 36.475$; $\rho = 1000$ kg/m³

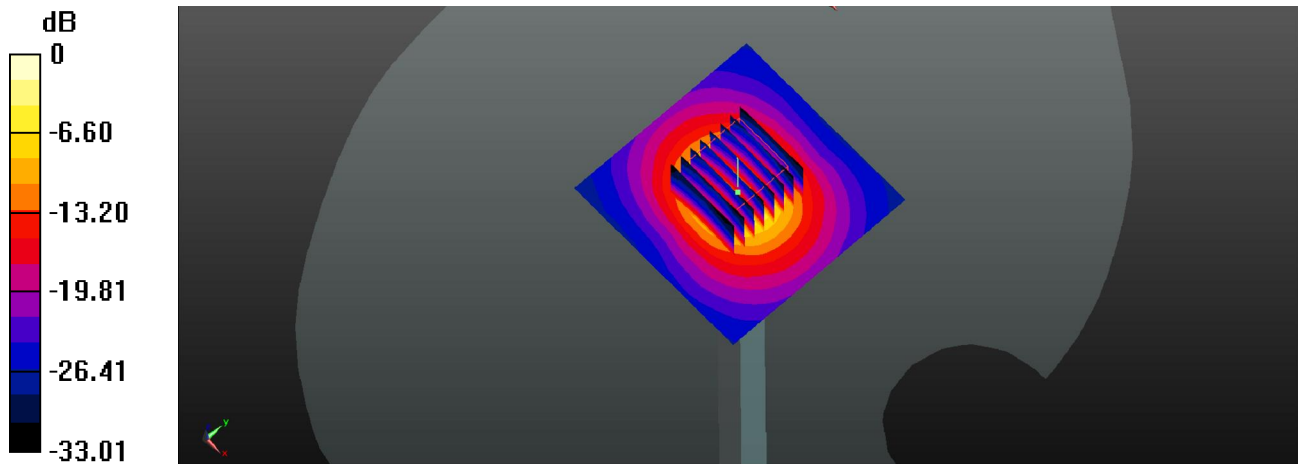
Ambient Temperature : 23.6 °C ; Liquid Temperature : 22.6 °C

DASY5 Configuration:

- Probe: EX3DV4 - SN3935; ConvF(5.29, 5.29, 5.29); Calibrated: 2017/12/14;
- Sensor-Surface: 1.4mm (Mechanical Surface Detection)
- Electronics: DAE4 Sn1358; Calibrated: 2017/10/24
- Phantom: SAM1; Type: QD000P40CD; Serial: TP:1753
- Measurement SW: DASY52, Version 52.8 (8); SEMCAD X Version 14.6.10 (7372)

Pin=100mw/Area Scan (71x71x1): Interpolated grid: dx=1.000 mm, dy=1.000 mm
Maximum value of SAR (interpolated) = 18.3 W/kg

Pin=100mw/Zoom Scan (8x8x7)/Cube 0: Measurement grid: dx=4mm, dy=4mm, dz=1.4mm
Reference Value = 40.92 V/m; Power Drift = 0.01 dB
Peak SAR (extrapolated) = 32.5 W/kg
SAR(1 g) = 7.71 W/kg; SAR(10 g) = 2.38 W/kg
Maximum value of SAR (measured) = 18.2 W/kg



0 dB = 18.2 W/kg

System Check_Head_5600MHz_20180127

DUT: D5GHzV2-SN:1128

Communication System: UID 0, CW (0); Frequency: 5600 MHz; Duty Cycle: 1:1

Medium: HSL_5G_Medium parameters used: $f = 5600$ MHz; $\sigma = 4.945$ S/m; $\epsilon_r = 36.333$; $\rho = 1000$ kg/m³

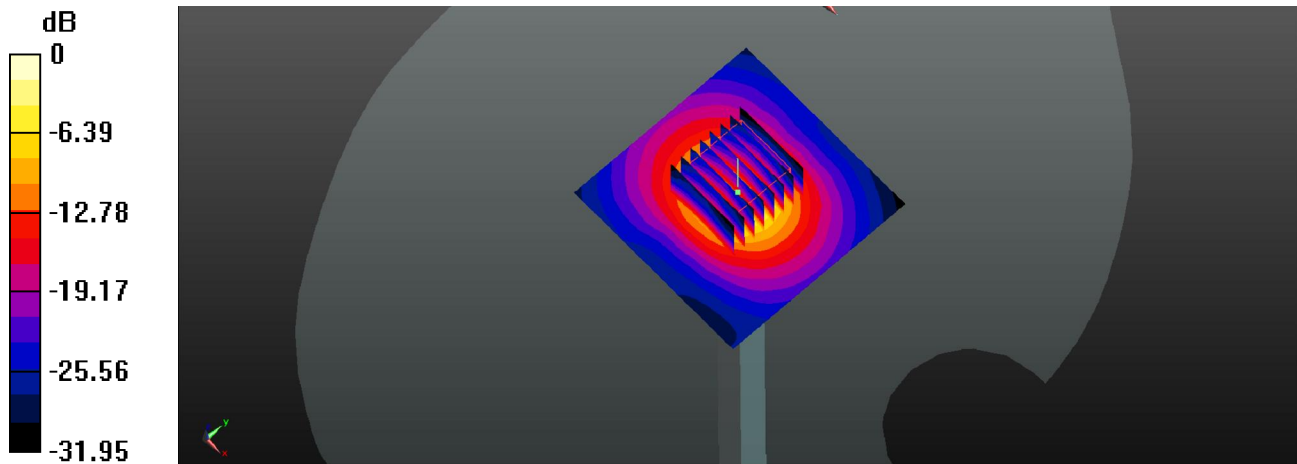
Ambient Temperature : 23.6 °C ; Liquid Temperature : 22.6 °C

DASY5 Configuration:

- Probe: EX3DV4 - SN3935; ConvF(5.08, 5.08, 5.08); Calibrated: 2017/12/14;
- Sensor-Surface: 1.4mm (Mechanical Surface Detection)
- Electronics: DAE4 Sn1358; Calibrated: 2017/10/24
- Phantom: SAM1; Type: QD000P40CD; Serial: TP:1753
- Measurement SW: DASY52, Version 52.8 (8); SEMCAD X Version 14.6.10 (7372)

Pin=100mw/Area Scan (71x71x1): Interpolated grid: dx=1.000 mm, dy=1.000 mm
Maximum value of SAR (interpolated) = 20.3 W/kg

Pin=100mw/Zoom Scan (8x8x7)/Cube 0: Measurement grid: dx=4mm, dy=4mm, dz=1.4mm
Reference Value = 43.61 V/m; Power Drift = -0.04 dB
Peak SAR (extrapolated) = 37.5 W/kg
SAR(1 g) = 8.61 W/kg; SAR(10 g) = 2.46 W/kg
Maximum value of SAR (measured) = 21.1 W/kg



0 dB = 21.1 W/kg

System Check_Head_5800MHz_20180127

DUT: D5GHzV2-SN:1128

Communication System: UID 0, CW (0); Frequency: 5800 MHz; Duty Cycle: 1:1

Medium: HSL_5G_Medium parameters used: $f = 5800$ MHz; $\sigma = 5.154$ S/m; $\epsilon_r = 36.067$; $\rho = 1000$ kg/m³

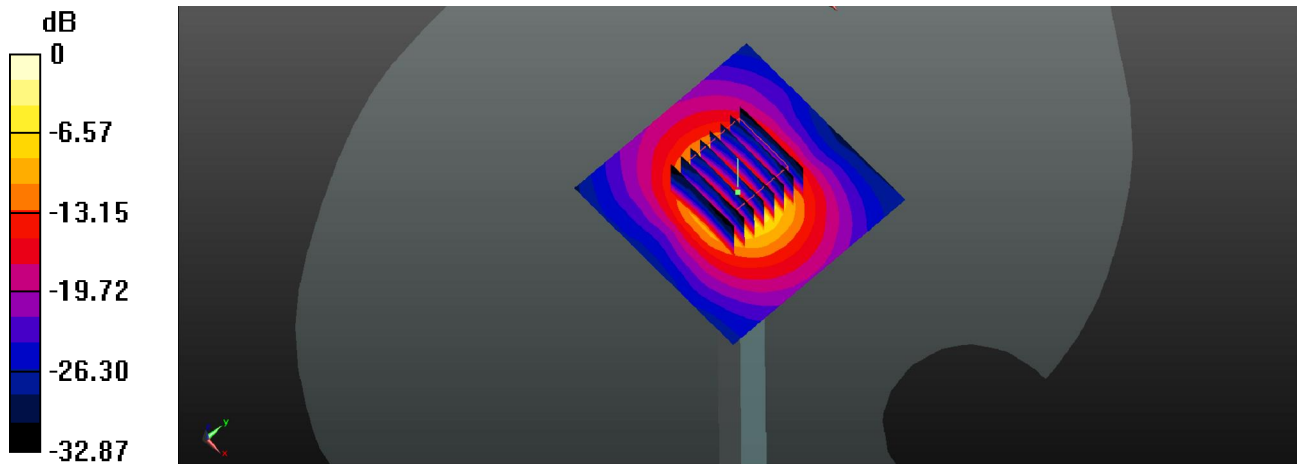
Ambient Temperature : 23.6 °C ; Liquid Temperature : 22.6 °C

DASY5 Configuration:

- Probe: EX3DV4 - SN3935; ConvF(5.15, 5.15, 5.15); Calibrated: 2017/12/14;
- Sensor-Surface: 1.4mm (Mechanical Surface Detection)
- Electronics: DAE4 Sn1358; Calibrated: 2017/10/24
- Phantom: SAM1; Type: QD000P40CD; Serial: TP:1753
- Measurement SW: DASY52, Version 52.8 (8); SEMCAD X Version 14.6.10 (7372)

Pin=100mw/Area Scan (71x71x1): Interpolated grid: dx=1.000 mm, dy=1.000 mm
Maximum value of SAR (interpolated) = 17.7 W/kg

Pin=100mw/Zoom Scan (8x8x7)/Cube 0: Measurement grid: dx=4mm, dy=4mm, dz=1.4mm
Reference Value = 38.14 V/m; Power Drift = 0.01 dB
Peak SAR (extrapolated) = 32.9 W/kg
SAR(1 g) = 7.44 W/kg; SAR(10 g) = 1.97 W/kg
Maximum value of SAR (measured) = 17.6 W/kg



0 dB = 17.6 W/kg

System Check_Body_835MHz_20180121

DUT: D835V2-SN: 4d151

Communication System: UID 0, CW; Frequency: 835 MHz; Duty Cycle: 1:1

Medium: MSL_835_Medium parameters used: $f = 835 \text{ MHz}$; $\sigma = 0.999 \text{ S/m}$; $\epsilon_r = 54.829$; $\rho = 1000 \text{ kg/m}^3$

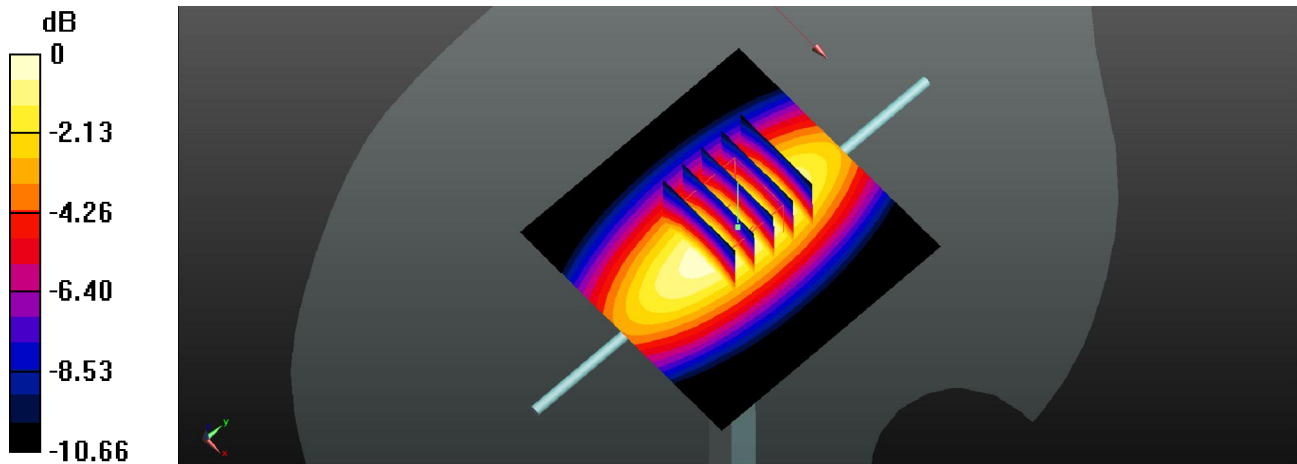
Ambient Temperature : $23.5 \text{ }^\circ\text{C}$; Liquid Temperature : $22.5 \text{ }^\circ\text{C}$

DASY5 Configuration:

- Probe: EX3DV4 - SN3935; ConvF(10.33, 10.33, 10.33); Calibrated: 2017/12/14;
- Sensor-Surface: 1.4mm (Mechanical Surface Detection)
- Electronics: DAE4 Sn1358; Calibrated: 2017/10/24
- Phantom: SAM1; Type: QD000P40CD; Serial: TP:1753
- Measurement SW: DASY52, Version 52.8 (8); SEMCAD X Version 14.6.10 (7372)

Pin=250mW/Area Scan (61x61x1): Interpolated grid: $dx=1.500 \text{ mm}$, $dy=1.500 \text{ mm}$
Maximum value of SAR (interpolated) = 3.53 W/kg

Pin=250mW/Zoom Scan (5x5x7)/Cube 0: Measurement grid: $dx=8\text{mm}$, $dy=8\text{mm}$, $dz=5\text{mm}$
Reference Value = 52.77 V/m ; Power Drift = -0.01 dB
Peak SAR (extrapolated) = 4.06 W/kg
SAR(1 g) = 2.64 W/kg ; SAR(10 g) = 1.74 W/kg
Maximum value of SAR (measured) = 3.54 W/kg



0 dB = 3.54 W/kg

System Check_Body_1900MHz_20180129

DUT: D1900V2-SN: 5d170

Communication System: UID 0, CW; Frequency: 1900 MHz; Duty Cycle: 1:1

Medium: MSL_1900_Medium parameters used: $f = 1900$ MHz; $\sigma = 1.55$ S/m; $\epsilon_r = 51.465$; $\rho = 1000$ kg/m³

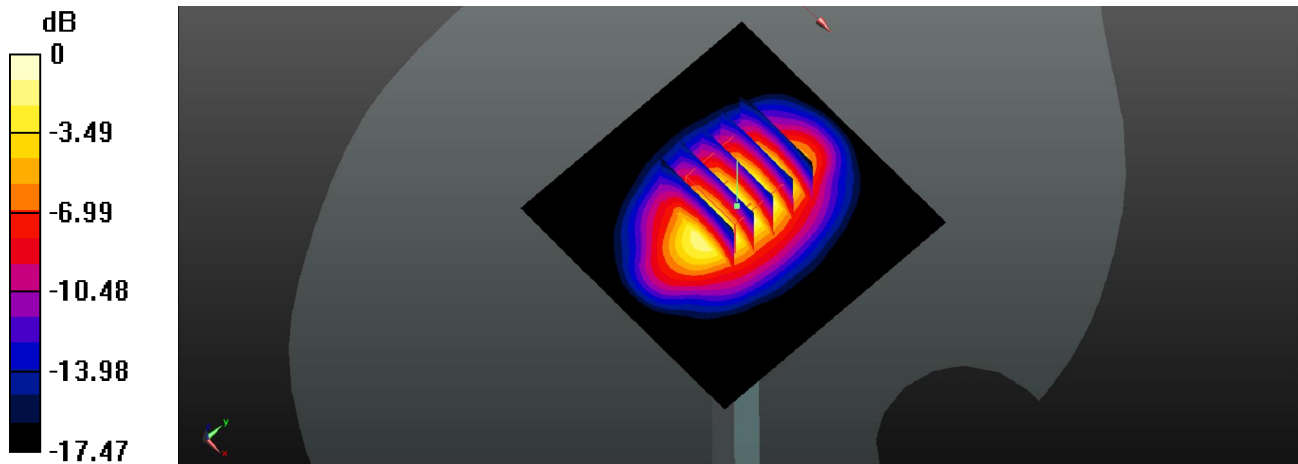
Ambient Temperature : 23.5 °C ; Liquid Temperature : 22.4 °C

DASY5 Configuration:

- Probe: EX3DV4 - SN3935; ConvF(8.3, 8.3, 8.3); Calibrated: 2017/12/14;
- Sensor-Surface: 1.4mm (Mechanical Surface Detection)
- Electronics: DAE4 Sn1358; Calibrated: 2017/10/24
- Phantom: SAM1; Type: QD000P40CD; Serial: TP:1753
- Measurement SW: DASY52, Version 52.8 (8); SEMCAD X Version 14.6.10 (7372)

Pin=250mW/Area Scan (61x61x1): Interpolated grid: dx=1.500 mm, dy=1.500 mm
Maximum value of SAR (interpolated) = 15.2 W/kg

Pin=250mW/Zoom Scan (5x5x7)/Cube 0: Measurement grid: dx=8mm, dy=8mm, dz=5mm
Reference Value = 83.51 V/m; Power Drift = 0.01 dB
Peak SAR (extrapolated) = 17.9 W/kg
SAR(1 g) = 9.94 W/kg; SAR(10 g) = 5.21 W/kg
Maximum value of SAR (measured) = 15.0 W/kg



0 dB = 15.0 W/kg

System Check_Body_2450MHz_20180126

DUT: D2450V2-SN: 908

Communication System: UID 0, CW; Frequency: 2450 MHz; Duty Cycle: 1:1

Medium: MSL_2450_Medium parameters used: $f = 2450$ MHz; $\sigma = 1.973$ S/m; $\epsilon_r = 54.109$; $\rho = 1000$ kg/m³

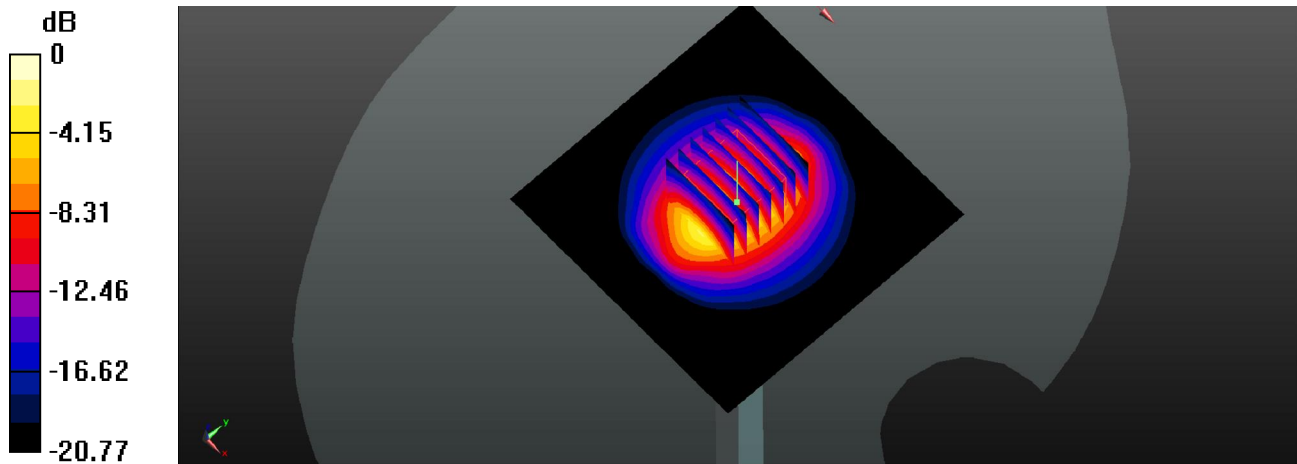
Ambient Temperature : 23.5 °C ; Liquid Temperature : 22.5 °C

DASY5 Configuration:

- Probe: EX3DV4 - SN3935; ConvF(7.99, 7.99, 7.99); Calibrated: 2017/12/14;
- Sensor-Surface: 1.4mm (Mechanical Surface Detection)
- Electronics: DAE4 Sn1358; Calibrated: 2017/10/24
- Phantom: SAM2; Type: QD000P40CD; Serial: TP:1754
- Measurement SW: DASY52, Version 52.8 (8); SEMCAD X Version 14.6.10 (7372)

Pin=250mW/Area Scan (81x81x1): Interpolated grid: dx=1.200 mm, dy=1.200 mm
Maximum value of SAR (interpolated) = 21.3 W/kg

Pin=250mW/Zoom Scan (7x7x7)/Cube 0: Measurement grid: dx=5mm, dy=5mm, dz=5mm
Reference Value = 86.69 V/m; Power Drift = -0.02 dB
Peak SAR (extrapolated) = 26.7 W/kg
SAR(1 g) = 13.3 W/kg; SAR(10 g) = 6.23 W/kg
Maximum value of SAR (measured) = 21.8 W/kg



0 dB = 21.8 W/kg

System Check_Body_2600MHz_20180126

DUT: D2600V2-SN: 1112

Communication System: UID 0, CW; Frequency: 2600 MHz; Duty Cycle: 1:1

Medium: MSL_2600_Medium parameters used: $f = 2600$ MHz; $\sigma = 2.183$ S/m; $\epsilon_r = 53.546$; $\rho = 1000$ kg/m³

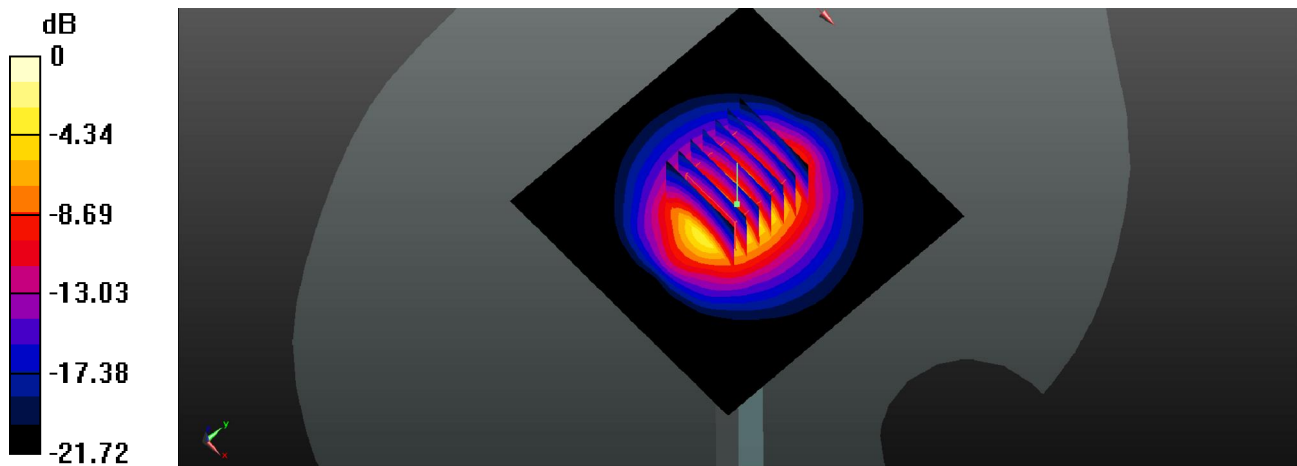
Ambient Temperature : 23.5 °C ; Liquid Temperature : 22.5 °C

DASY5 Configuration:

- Probe: EX3DV4 - SN3935; ConvF(7.71, 7.71, 7.71); Calibrated: 2017/12/14;
- Sensor-Surface: 1.4mm (Mechanical Surface Detection)
- Electronics: DAE4 Sn1358; Calibrated: 2017/10/24
- Phantom: SAM2; Type: QD000P40CD; Serial: TP:1754
- Measurement SW: DASY52, Version 52.8 (8); SEMCAD X Version 14.6.10 (7372)

Pin=250mW/Area Scan (81x81x1): Interpolated grid: dx=1.200 mm, dy=1.200 mm
Maximum value of SAR (interpolated) = 22.1 W/kg

Pin=250mW/Zoom Scan (7x7x7)/Cube 0: Measurement grid: dx=5mm, dy=5mm, dz=5mm
Reference Value = 83.96 V/m; Power Drift = -0.07 dB
Peak SAR (extrapolated) = 27.1 W/kg
SAR(1 g) = 13.4 W/kg; SAR(10 g) = 6.04 W/kg
Maximum value of SAR (measured) = 22.2 W/kg



0 dB = 22.2 W/kg

System Check_Body_5200MHz_20180127

DUT: D5GHzV2-SN: 1128

Communication System: UID 0, CW (0); Frequency: 5200 MHz; Duty Cycle: 1:1

Medium: MSL_5G_Medium parameters used: $f = 5200$ MHz; $\sigma = 5.431$ S/m; $\epsilon_r = 49.223$; $\rho = 1000$ kg/m³

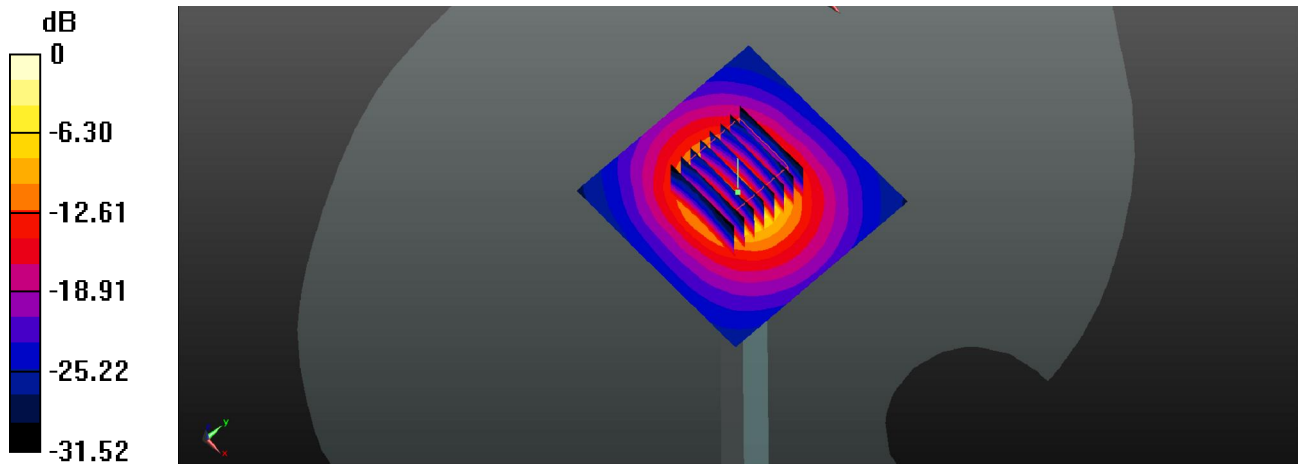
Ambient Temperature : 23.4 °C ; Liquid Temperature : 22.6 °C

DASY5 Configuration:

- Probe: EX3DV4 - SN3935; ConvF(5.41, 5.41, 5.41); Calibrated: 2017/12/14;
- Sensor-Surface: 1.4mm (Mechanical Surface Detection)
- Electronics: DAE4 Sn1358; Calibrated: 2017/10/24
- Phantom: SAM2; Type: QD000P40CD; Serial: TP:1754
- Measurement SW: DASY52, Version 52.8 (8); SEMCAD X Version 14.6.10 (7372)

Pin=100mw/Area Scan (71x71x1): Interpolated grid: dx=1.000 mm, dy=1.000 mm
Maximum value of SAR (interpolated) = 16.6 W/kg

Pin=100mw/Zoom Scan (8x8x7)/Cube 0: Measurement grid: dx=4mm, dy=4mm, dz=1.4mm
Reference Value = 38.23 V/m; Power Drift = -0.01 dB
Peak SAR (extrapolated) = 29.5 W/kg
SAR(1 g) = 6.93 W/kg; SAR(10 g) = 1.97 W/kg
Maximum value of SAR (measured) = 17.0 W/kg



0 dB = 17.0 W/kg

System Check_Body_5300MHz_20180127

DUT: D5GHZV2-SN: 1128

Communication System: UID 0, CW (0); Frequency: 5300 MHz; Duty Cycle: 1:1

Medium: MSL_5G_Medium parameters used: $f = 5300$ MHz; $\sigma = 5.564$ S/m; $\epsilon_r = 49.045$; $\rho = 1000$ kg/m³

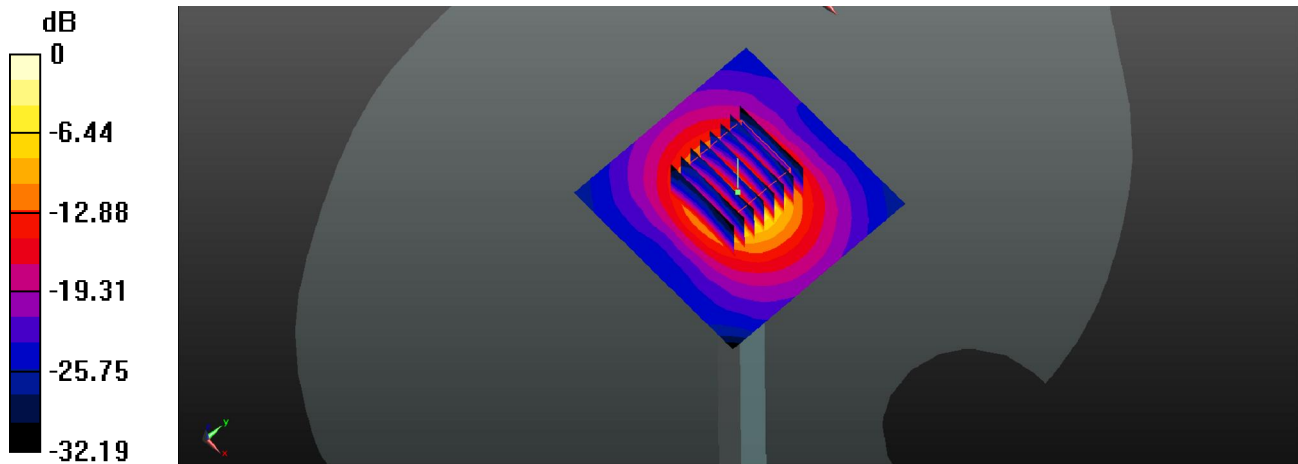
Ambient Temperature : 23.4 °C ; Liquid Temperature : 22.6 °C

DASY5 Configuration:

- Probe: EX3DV4 - SN3935; ConvF(5.2, 5.2, 5.2); Calibrated: 2017/12/14;
- Sensor-Surface: 1.4mm (Mechanical Surface Detection)
- Electronics: DAE4 Sn1358; Calibrated: 2017/10/24
- Phantom: SAM2; Type: QD000P40CD; Serial: TP:1754
- Measurement SW: DASY52, Version 52.8 (8); SEMCAD X Version 14.6.10 (7372)

Pin=100mw/Area Scan (71x71x1): Interpolated grid: dx=1.000 mm, dy=1.000 mm
Maximum value of SAR (interpolated) = 16.8 W/kg

Pin=100mw/Zoom Scan (8x8x7)/Cube 0: Measurement grid: dx=4mm, dy=4mm, dz=1.4mm
Reference Value = 37.02 V/m; Power Drift = 0.05 dB
Peak SAR (extrapolated) = 30.3 W/kg
SAR(1 g) = 7.18 W/kg; SAR(10 g) = 2.02 W/kg
Maximum value of SAR (measured) = 17.0 W/kg



0 dB = 17.0 W/kg

System Check_Body_5500MHz_20180127

DUT: D5GHZV2-SN: 1128

Communication System: UID 0, CW (0); Frequency: 5500 MHz; Duty Cycle: 1:1

Medium: MSL_5G_Medium parameters used: $f = 5500$ MHz; $\sigma = 5.827$ S/m; $\epsilon_r = 48.715$; $\rho = 1000$ kg/m³

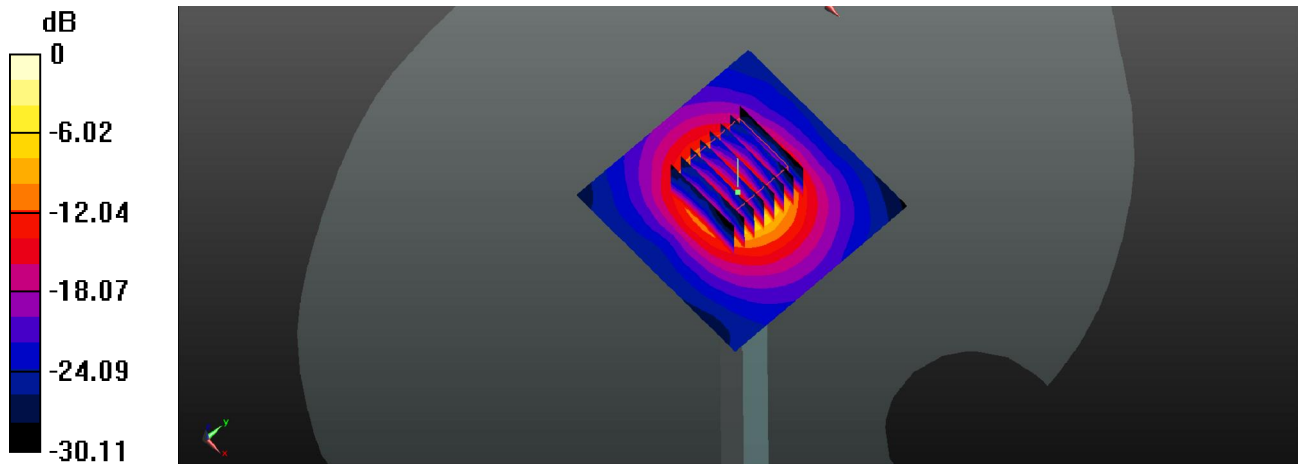
Ambient Temperature : 23.4 °C ; Liquid Temperature : 22.6 °C

DASY5 Configuration:

- Probe: EX3DV4 - SN3935; ConvF(4.62, 4.62, 4.62); Calibrated: 2017/12/14;
- Sensor-Surface: 1.4mm (Mechanical Surface Detection)
- Electronics: DAE4 Sn1358; Calibrated: 2017/10/24
- Phantom: SAM2; Type: QD000P40CD; Serial: TP:1754
- Measurement SW: DASY52, Version 52.8 (8); SEMCAD X Version 14.6.10 (7372)

Pin=100mw/Area Scan (71x71x1): Interpolated grid: dx=1.000 mm, dy=1.000 mm
Maximum value of SAR (interpolated) = 18.6 W/kg

Pin=100mw/Zoom Scan (8x8x7)/Cube 0: Measurement grid: dx=4mm, dy=4mm, dz=1.4mm
Reference Value = 36.73 V/m; Power Drift = 0.13 dB
Peak SAR (extrapolated) = 31.1 W/kg
SAR(1 g) = 7.59 W/kg; SAR(10 g) = 2.17 W/kg
Maximum value of SAR (measured) = 19.0 W/kg



0 dB = 19.0 W/kg

System Check_Body_5600MHz_20180127

DUT: D5GHzV2-SN: 1128

Communication System: UID 0, CW (0); Frequency: 5600 MHz; Duty Cycle: 1:1

Medium: MSL_5G_Medium parameters used: $f = 5600$ MHz; $\sigma = 5.968$ S/m; $\epsilon_r = 48.55$; $\rho = 1000$ kg/m³

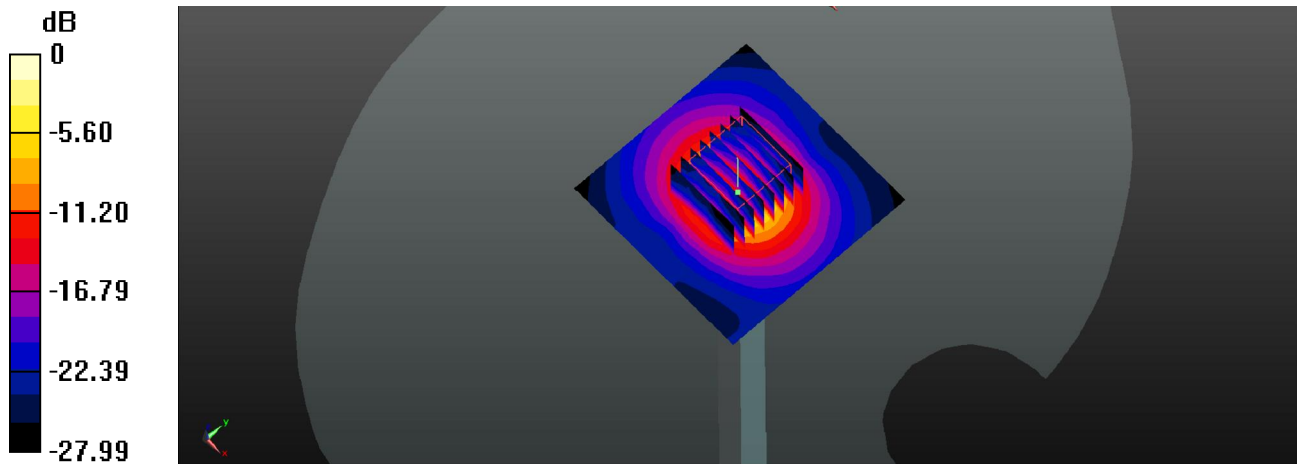
Ambient Temperature : 23.4 °C ; Liquid Temperature : 22.6 °C

DASY5 Configuration:

- Probe: EX3DV4 - SN3935; ConvF(4.51, 4.51, 4.51); Calibrated: 2017/12/14;
- Sensor-Surface: 1.4mm (Mechanical Surface Detection)
- Electronics: DAE4 Sn1358; Calibrated: 2017/10/24
- Phantom: SAM2; Type: QD000P40CD; Serial: TP:1754
- Measurement SW: DASY52, Version 52.8 (8); SEMCAD X Version 14.6.10 (7372)

Pin=100mw/Area Scan (71x71x1): Interpolated grid: dx=1.000 mm, dy=1.000 mm
Maximum value of SAR (interpolated) = 19.4 W/kg

Pin=100mw/Zoom Scan (8x8x7)/Cube 0: Measurement grid: dx=4mm, dy=4mm, dz=1.4mm
Reference Value = 40.63 V/m; Power Drift = -0.04 dB
Peak SAR (extrapolated) = 33.3 W/kg
SAR(1 g) = 8.09 W/kg; SAR(10 g) = 2.31 W/kg
Maximum value of SAR (measured) = 19.9 W/kg



0 dB = 19.9 W/kg

System Check_Body_5800MHz_20180127

DUT: D5GHzV2-SN: 1128

Communication System: UID 0, CW (0); Frequency: 5800 MHz; Duty Cycle: 1:1

Medium: MSL_5G_Medium parameters used: $f = 5800$ MHz; $\sigma = 6.251$ S/m; $\epsilon_r = 48.223$; $\rho = 1000$ kg/m³

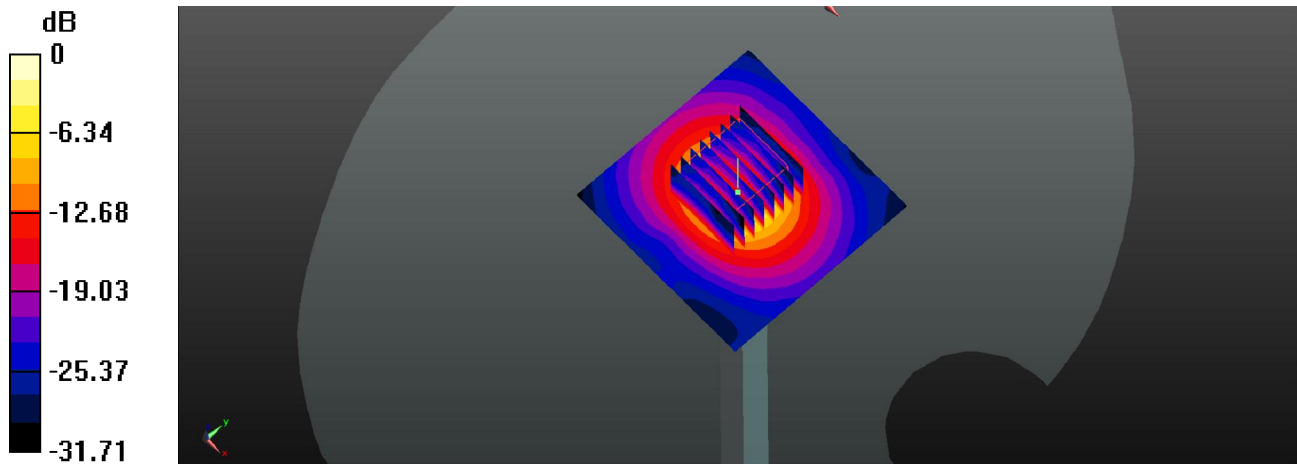
Ambient Temperature : 23.4 °C ; Liquid Temperature : 22.6 °C

DASY5 Configuration:

- Probe: EX3DV4 - SN3935; ConvF(4.64, 4.64, 4.64); Calibrated: 2017/12/14;
- Sensor-Surface: 1.4mm (Mechanical Surface Detection)
- Electronics: DAE4 Sn1358; Calibrated: 2017/10/24
- Phantom: SAM2; Type: QD000P40CD; Serial: TP:1754
- Measurement SW: DASY52, Version 52.8 (8); SEMCAD X Version 14.6.10 (7372)

Pin=100mw/Area Scan (71x71x1): Interpolated grid: dx=1.000 mm, dy=1.000 mm
Maximum value of SAR (interpolated) = 16.4 W/kg

Pin=100mw/Zoom Scan (8x8x7)/Cube 0: Measurement grid: dx=4mm, dy=4mm, dz=1.4mm
Reference Value = 31.59 V/m; Power Drift = 0.06 dB
Peak SAR (extrapolated) = 28.1 W/kg
SAR(1 g) = 7.21 W/kg; SAR(10 g) = 1.95 W/kg
Maximum value of SAR (measured) = 16.8 W/kg



0 dB = 16.8 W/kg



Appendix B. Plots of High SAR Measurement

The plots are shown as follows.

01_GSM850_GPRS (4 Tx slots)_Left Cheek_0mm_Ch189

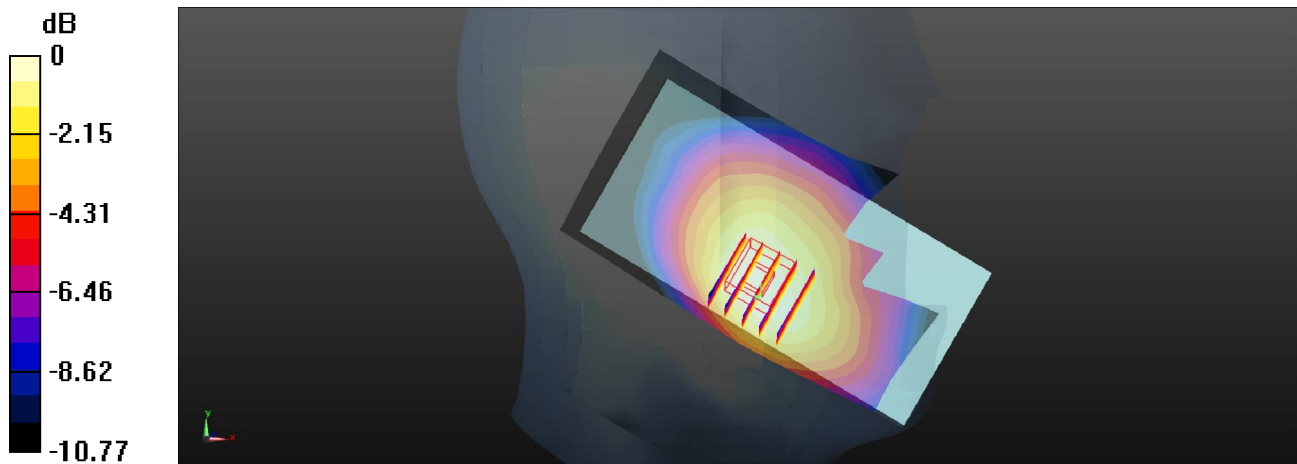
Communication System: UID 0, GPRS (GMSK 4 Tx slot) (0); Frequency: 836.4 MHz; Duty Cycle: 1:2.08
Medium: HSL_835_Medium parameters used: $f = 836.4$ MHz; $\sigma = 0.936$ S/m; $\epsilon_r = 42.91$;
 $\rho = 1000$ kg/m³
Ambient Temperature : 23.7 °C ; Liquid Temperature : 22.8 °C

DASY5 Configuration:

- Probe: EX3DV4 - SN3935; ConvF(10.36, 10.36, 10.36); Calibrated: 2017/12/14;
- Sensor-Surface: 1.4mm (Mechanical Surface Detection)
- Electronics: DAE4 Sn1358; Calibrated: 2017/10/24
- Phantom: SAM2; Type: QD000P40CD; Serial: TP:1754
- Measurement SW: DASY52, Version 52.8 (8); SEMCAD X Version 14.6.10 (7372)

Ch189/Area Scan (61x121x1): Interpolated grid: dx=1.500 mm, dy=1.500 mm
Maximum value of SAR (interpolated) = 0.293 W/kg

Ch189/Zoom Scan (5x5x7)/Cube 0: Measurement grid: dx=8mm, dy=8mm, dz=5mm
Reference Value = 4.235 V/m; Power Drift = 0.06 dB
Peak SAR (extrapolated) = 0.340 W/kg
SAR(1 g) = 0.243 W/kg; SAR(10 g) = 0.184 W/kg
Maximum value of SAR (measured) = 0.296 W/kg



0 dB = 0.296 W/kg

02_GSM1900_GPRS (4 Tx slots)_Right Cheek_0mm_Ch512

Communication System: UID 0, GPRS (GMSK 4 Tx slot) (0); Frequency: 1850.2 MHz; Duty Cycle: 1:2.08

Medium: HSL_1900_Medium parameters used: $f = 1850.2$ MHz; $\sigma = 1.408$ S/m; $\epsilon_r = 39.27$;

$\rho = 1000$ kg/m³

Ambient Temperature : 23.5 °C ; Liquid Temperature : 22.7 °C

DASY5 Configuration:

- Probe: EX3DV4 - SN3935; ConvF(8.41, 8.41, 8.41); Calibrated: 2017/12/14;
- Sensor-Surface: 1.4mm (Mechanical Surface Detection)
- Electronics: DAE4 Sn1358; Calibrated: 2017/10/24
- Phantom: SAM2; Type: QD000P40CD; Serial: TP:1754
- Measurement SW: DASY52, Version 52.8 (8); SEMCAD X Version 14.6.10 (7372)

Ch512/Area Scan (61x121x1): Interpolated grid: dx=1.500 mm, dy=1.500 mm

Maximum value of SAR (interpolated) = 0.210 W/kg

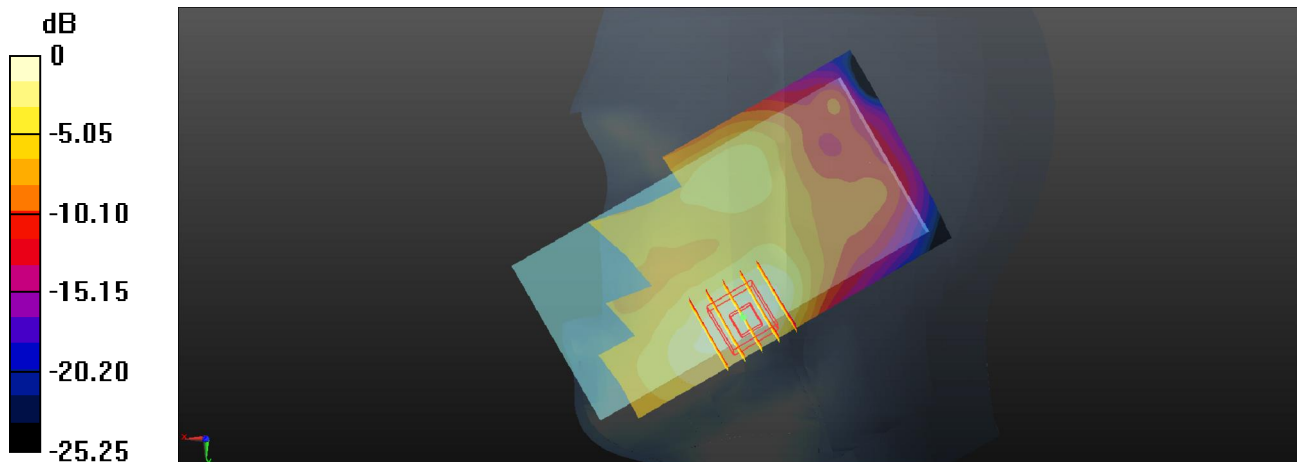
Ch512/Zoom Scan (5x5x7)/Cube 0: Measurement grid: dx=8mm, dy=8mm, dz=5mm

Reference Value = 3.179 V/m; Power Drift = 0.08 dB

Peak SAR (extrapolated) = 0.245 W/kg

SAR(1 g) = 0.153 W/kg; SAR(10 g) = 0.095 W/kg

Maximum value of SAR (measured) = 0.212 W/kg



0 dB = 0.212 W/kg

03_WCDMA Band V_RMC 12.2Kbps_Left Cheek_0mm_Ch4233

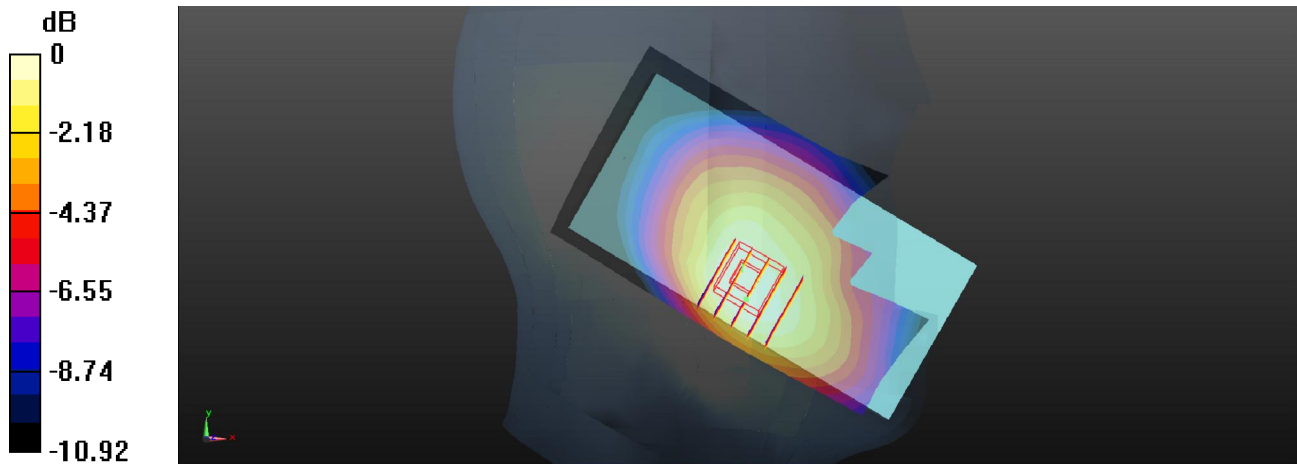
Communication System: UID 0, WCDMA (0); Frequency: 846.6 MHz; Duty Cycle: 1:1
Medium: HSL_835_Medium parameters used: $f = 846.6$ MHz; $\sigma = 0.947$ S/m; $\epsilon_r = 42.778$;
 $\rho = 1000$ kg/m³
Ambient Temperature : 23.7 °C ; Liquid Temperature : 22.8 °C

DASY5 Configuration:

- Probe: EX3DV4 - SN3935; ConvF(10.36, 10.36, 10.36); Calibrated: 2017/12/14;
- Sensor-Surface: 1.4mm (Mechanical Surface Detection)
- Electronics: DAE4 Sn1358; Calibrated: 2017/10/24
- Phantom: SAM2; Type: QD000P40CD; Serial: TP:1754
- Measurement SW: DASY52, Version 52.8 (8); SEMCAD X Version 14.6.10 (7372)

Ch4233/Area Scan (61x121x1): Interpolated grid: dx=1.500 mm, dy=1.500 mm
Maximum value of SAR (interpolated) = 0.329 W/kg

Ch4233/Zoom Scan (5x5x7)/Cube 0: Measurement grid: dx=8mm, dy=8mm, dz=5mm
Reference Value = 4.460 V/m; Power Drift = 0.07 dB
Peak SAR (extrapolated) = 0.352 W/kg
SAR(1 g) = 0.259 W/kg; SAR(10 g) = 0.194 W/kg
Maximum value of SAR (measured) = 0.315 W/kg



0 dB = 0.315 W/kg

04_WCDMA Band II_RMC 12.2Kbps_Right Cheek_0mm_Ch9262

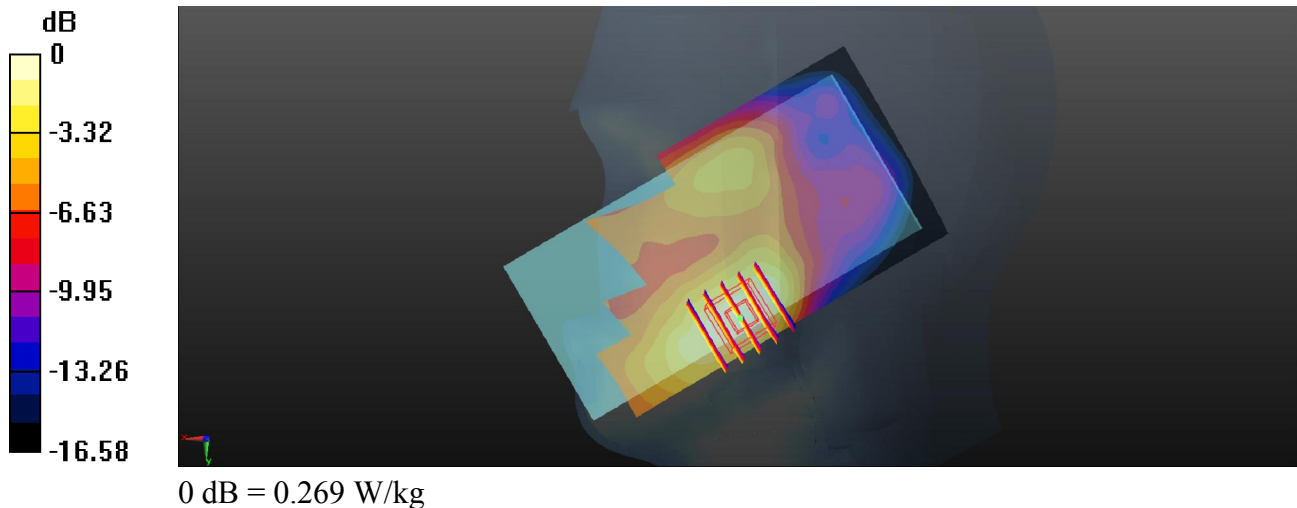
Communication System: UID 0, WCDMA (0); Frequency: 1852.4 MHz; Duty Cycle: 1:1
Medium: HSL_1900_Medium parameters used: $f = 1852.4$ MHz; $\sigma = 1.41$ S/m; $\epsilon_r = 39.261$;
 $\rho = 1000$ kg/m³
Ambient Temperature : 23.5 °C ; Liquid Temperature : 22.7 °C

DASY5 Configuration:

- Probe: EX3DV4 - SN3935; ConvF(8.41, 8.41, 8.41); Calibrated: 2017/12/14;
- Sensor-Surface: 1.4mm (Mechanical Surface Detection)
- Electronics: DAE4 Sn1358; Calibrated: 2017/10/24
- Phantom: SAM2; Type: QD000P40CD; Serial: TP:1754
- Measurement SW: DASY52, Version 52.8 (8); SEMCAD X Version 14.6.10 (7372)

Ch9262/Area Scan (61x121x1): Interpolated grid: dx=1.500 mm, dy=1.500 mm
Maximum value of SAR (interpolated) = 0.272 W/kg

Ch9262/Zoom Scan (5x5x7)/Cube 0: Measurement grid: dx=8mm, dy=8mm, dz=5mm
Reference Value = 3.806 V/m; Power Drift = 0.15 dB
Peak SAR (extrapolated) = 0.310 W/kg
SAR(1 g) = 0.194 W/kg; SAR(10 g) = 0.120 W/kg
Maximum value of SAR (measured) = 0.269 W/kg



05_LTE Band 26_15M_QPSK_1RB_37offset_Left Cheek_0mm_Ch26865

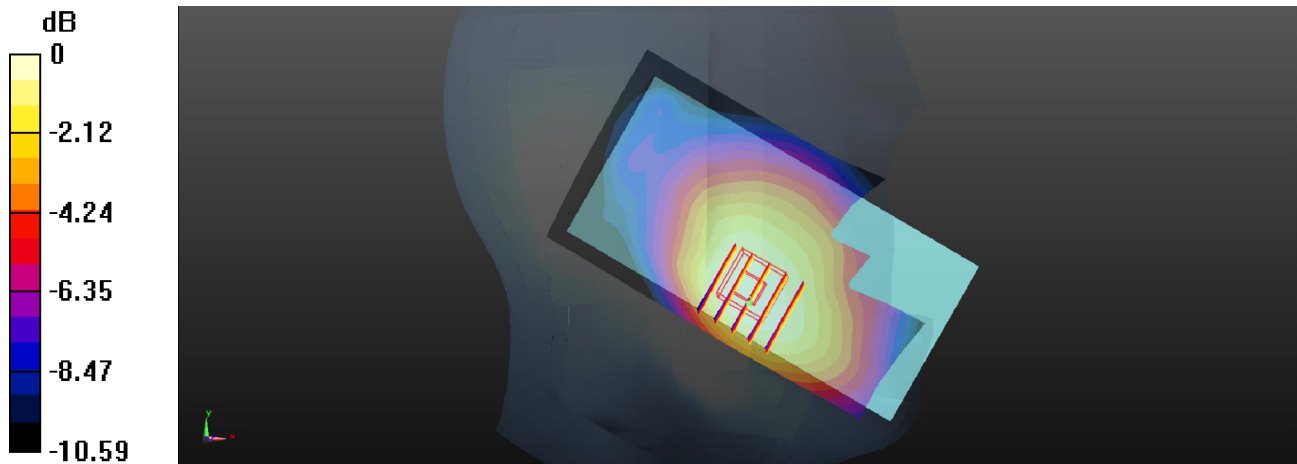
Communication System: UID 0, FDD-LTE (0); Frequency: 831.5 MHz; Duty Cycle: 1:1
Medium: HSL_835_Medium parameters used: $f = 831.5$ MHz; $\sigma = 0.931$ S/m; $\epsilon_r = 42.971$;
 $\rho = 1000$ kg/m³
Ambient Temperature : 23.7 °C ; Liquid Temperature : 22.8 °C

DASY5 Configuration:

- Probe: EX3DV4 - SN3935; ConvF(10.36, 10.36, 10.36); Calibrated: 2017/12/14;
- Sensor-Surface: 1.4mm (Mechanical Surface Detection)
- Electronics: DAE4 Sn1358; Calibrated: 2017/10/24
- Phantom: SAM2; Type: QD000P40CD; Serial: TP:1754
- Measurement SW: DASY52, Version 52.8 (8); SEMCAD X Version 14.6.10 (7372)

Ch26865/Area Scan (61x121x1): Interpolated grid: dx=1.500 mm, dy=1.500 mm
Maximum value of SAR (interpolated) = 0.326 W/kg

Ch26865/Zoom Scan (5x5x7)/Cube 0: Measurement grid: dx=8mm, dy=8mm, dz=5mm
Reference Value = 5.872 V/m; Power Drift = 0.02 dB
Peak SAR (extrapolated) = 0.343 W/kg
SAR(1 g) = 0.254 W/kg; SAR(10 g) = 0.193 W/kg
Maximum value of SAR (measured) = 0.309 W/kg



0 dB = 0.309 W/kg

06_LTE Band 2_20M_QPSK_1RB_49offset_Right Cheek_0mm_Ch18900

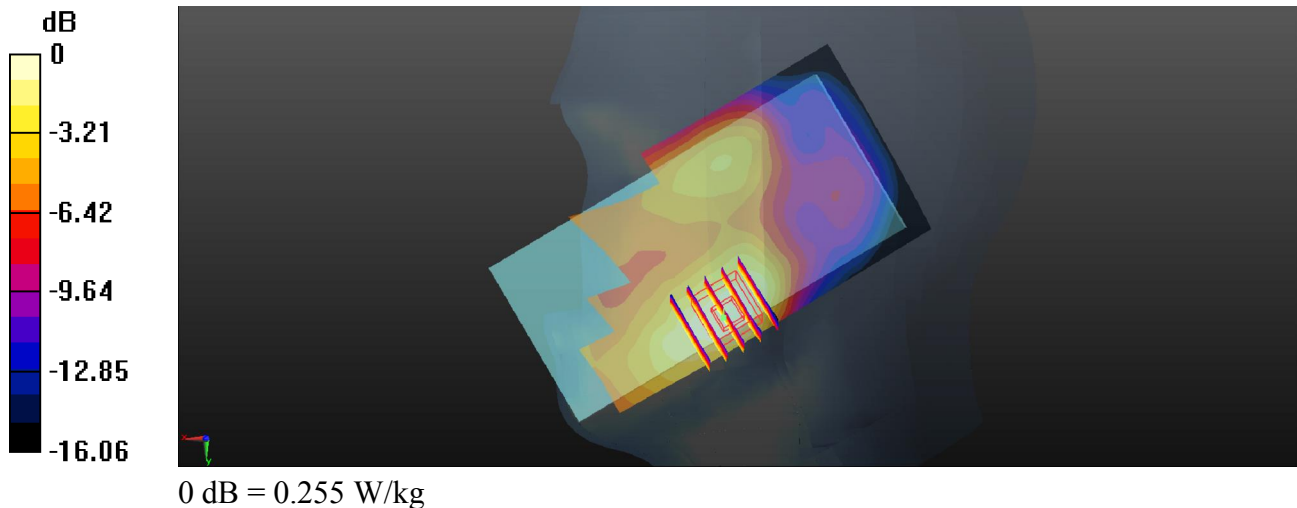
Communication System: UID 0, FDD-LTE (0); Frequency: 1880 MHz; Duty Cycle: 1:1
Medium: HSL_1900_Medium parameters used: $f = 1880$ MHz; $\sigma = 1.437$ S/m; $\epsilon_r = 39.162$;
 $\rho = 1000$ kg/m³
Ambient Temperature : 23.5 °C ; Liquid Temperature : 22.7 °C

DASY5 Configuration:

- Probe: EX3DV4 - SN3935; ConvF(8.41, 8.41, 8.41); Calibrated: 2017/12/14;
- Sensor-Surface: 1.4mm (Mechanical Surface Detection)
- Electronics: DAE4 Sn1358; Calibrated: 2017/10/24
- Phantom: SAM2; Type: QD000P40CD; Serial: TP:1754
- Measurement SW: DASY52, Version 52.8 (8); SEMCAD X Version 14.6.10 (7372)

Ch18900/Area Scan (61x121x1): Interpolated grid: dx=1.500 mm, dy=1.500 mm
Maximum value of SAR (interpolated) = 0.256 W/kg

Ch18900/Zoom Scan (5x5x7)/Cube 0: Measurement grid: dx=8mm, dy=8mm, dz=5mm
Reference Value = 4.094 V/m; Power Drift = 0.05 dB
Peak SAR (extrapolated) = 0.294 W/kg
SAR(1 g) = 0.185 W/kg; SAR(10 g) = 0.116 W/kg
Maximum value of SAR (measured) = 0.255 W/kg



07_LTE Band 7_20M_QPSK_1RB_99offset_Left Cheek_0mm_Ch20850

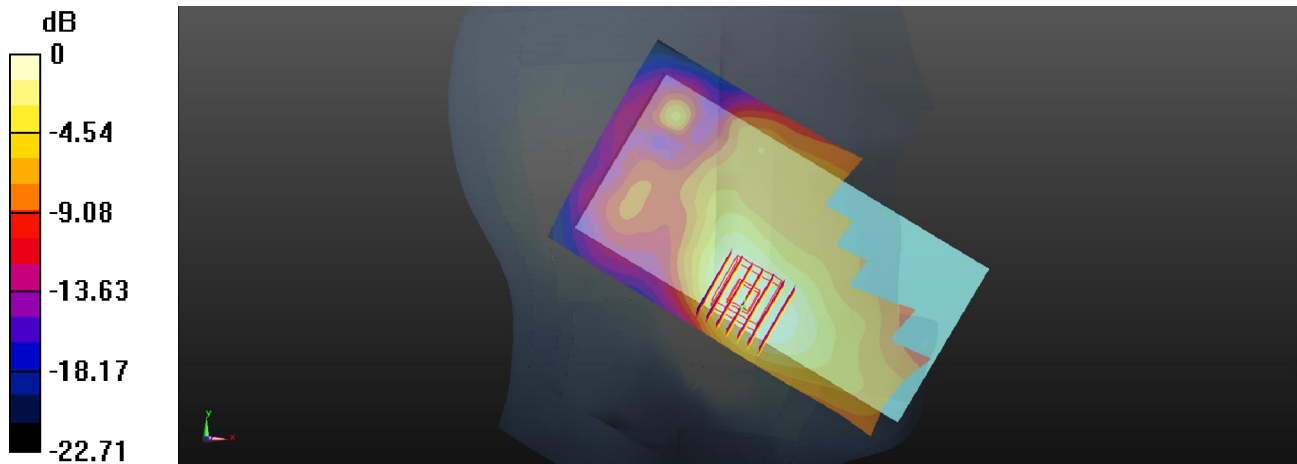
Communication System: UID 0, FDD-LTE (0); Frequency: 2510 MHz; Duty Cycle: 1:1
Medium: HSL_2600_Medium parameters used: $f = 2510$ MHz; $\sigma = 1.942$ S/m; $\epsilon_r = 39.671$;
 $\rho = 1000$ kg/m³
Ambient Temperature : 23.6 °C ; Liquid Temperature : 22.3 °C

DASY5 Configuration:

- Probe: EX3DV4 - SN3935; ConvF(7.67, 7.67, 7.67); Calibrated: 2017/12/14;
- Sensor-Surface: 1.4mm (Mechanical Surface Detection)
- Electronics: DAE4 Sn1358; Calibrated: 2017/10/24
- Phantom: SAM1; Type: QD000P40CD; Serial: TP:1753
- Measurement SW: DASY52, Version 52.8 (8); SEMCAD X Version 14.6.10 (7372)

Ch20850/Area Scan (81x151x1): Interpolated grid: dx=1.200 mm, dy=1.200 mm
Maximum value of SAR (interpolated) = 0.633 W/kg

Ch20850/Zoom Scan (7x7x7)/Cube 0: Measurement grid: dx=5mm, dy=5mm, dz=5mm
Reference Value = 4.511 V/m; Power Drift = 0.09 dB
Peak SAR (extrapolated) = 0.731 W/kg
SAR(1 g) = 0.402 W/kg; SAR(10 g) = 0.228 W/kg
Maximum value of SAR (measured) = 0.600 W/kg



0 dB = 0.600 W/kg

08_LTE Band 38_20M_QPSK_1RB_0offset_Left Cheek_0mm_Ch37850

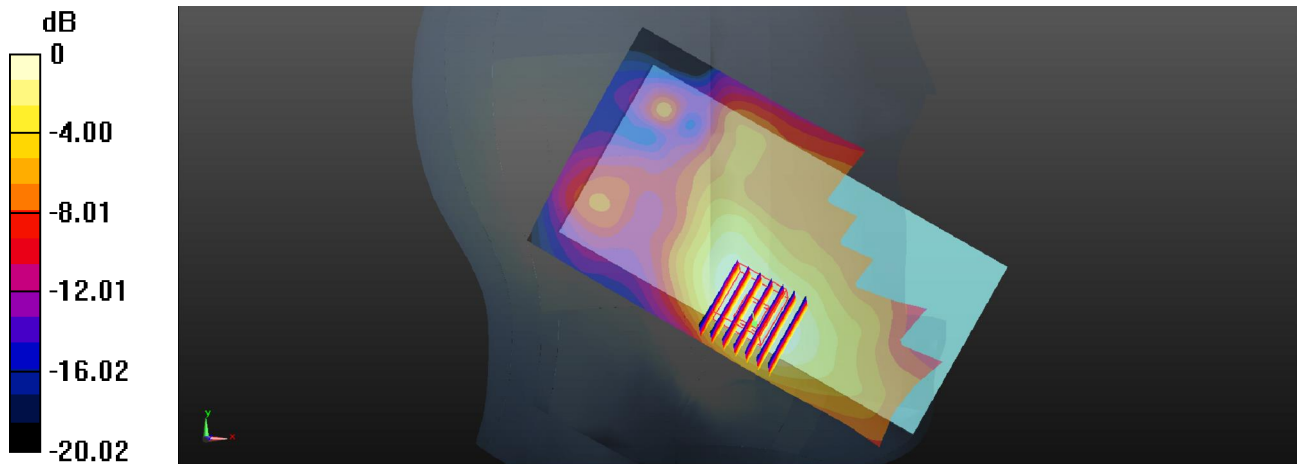
Communication System: UID 0, TDD-LTE (0); Frequency: 2580 MHz; Duty Cycle: 1:1.59
Medium: HSL_2600_Medium parameters used: $f = 2580$ MHz; $\sigma = 2.027$ S/m; $\epsilon_r = 39.388$;
 $\rho = 1000$ kg/m³
Ambient Temperature : 23.6 °C ; Liquid Temperature : 22.3 °C

DASY5 Configuration:

- Probe: EX3DV4 - SN3935; ConvF(7.67, 7.67, 7.67); Calibrated: 2017/12/14;
- Sensor-Surface: 1.4mm (Mechanical Surface Detection)
- Electronics: DAE4 Sn1358; Calibrated: 2017/10/24
- Phantom: SAM1; Type: QD000P40CD; Serial: TP:1753
- Measurement SW: DASY52, Version 52.8 (8); SEMCAD X Version 14.6.10 (7372)

Ch37850/Area Scan (81x151x1): Interpolated grid: dx=1.200 mm, dy=1.200 mm
Maximum value of SAR (interpolated) = 0.407 W/kg

Ch37850/Zoom Scan (7x7x7)/Cube 0: Measurement grid: dx=5mm, dy=5mm, dz=5mm
Reference Value = 3.390 V/m; Power Drift = 0.07 dB
Peak SAR (extrapolated) = 0.476 W/kg
SAR(1 g) = 0.253 W/kg; SAR(10 g) = 0.141 W/kg
Maximum value of SAR (measured) = 0.387 W/kg



0 dB = 0.387 W/kg

09_WLAN2.4GHz_802.11b 1Mbps_Right Cheek_0mm_Ch1

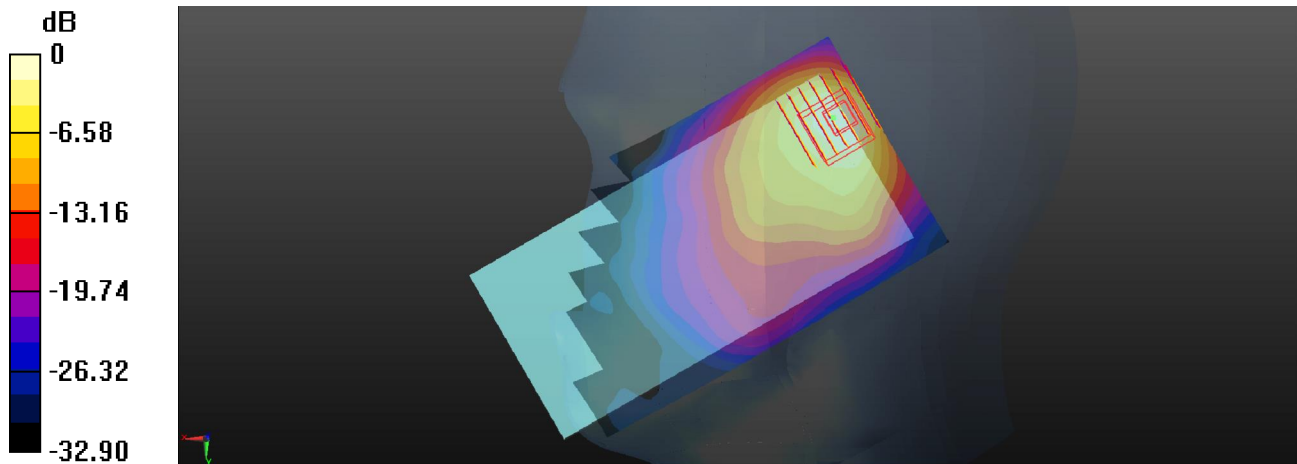
Communication System: UID 0, 802.11b (0); Frequency: 2412 MHz; Duty Cycle: 1:1
Medium: HSL_2450_Medium parameters used: $f = 2412$ MHz; $\sigma = 1.825$ S/m; $\epsilon_r = 40.069$;
 $\rho = 1000$ kg/m³
Ambient Temperature : 23.6 °C ; Liquid Temperature : 22.3 °C

DASY5 Configuration:

- Probe: EX3DV4 - SN3935; ConvF(7.87, 7.87, 7.87); Calibrated: 2017/12/14;
- Sensor-Surface: 1.4mm (Mechanical Surface Detection)
- Electronics: DAE4 Sn1358; Calibrated: 2017/10/24
- Phantom: SAM1; Type: QD000P40CD; Serial: TP:1753
- Measurement SW: DASY52, Version 52.8 (8); SEMCAD X Version 14.6.10 (7372)

Ch1/Area Scan (81x151x1): Interpolated grid: dx=1.200 mm, dy=1.200 mm
Maximum value of SAR (interpolated) = 2.24 W/kg

Ch1/Zoom Scan (7x7x7)/Cube 0: Measurement grid: dx=5mm, dy=5mm, dz=5mm
Reference Value = 18.75 V/m; Power Drift = 0.03 dB
Peak SAR (extrapolated) = 2.68 W/kg
SAR(1 g) = 0.967 W/kg; SAR(10 g) = 0.415 W/kg
Maximum value of SAR (measured) = 1.81 W/kg



0 dB = 1.81 W/kg

10_WLAN5.3GHz_802.11a 6Mbps_Right Tilted_0mm_Ch52

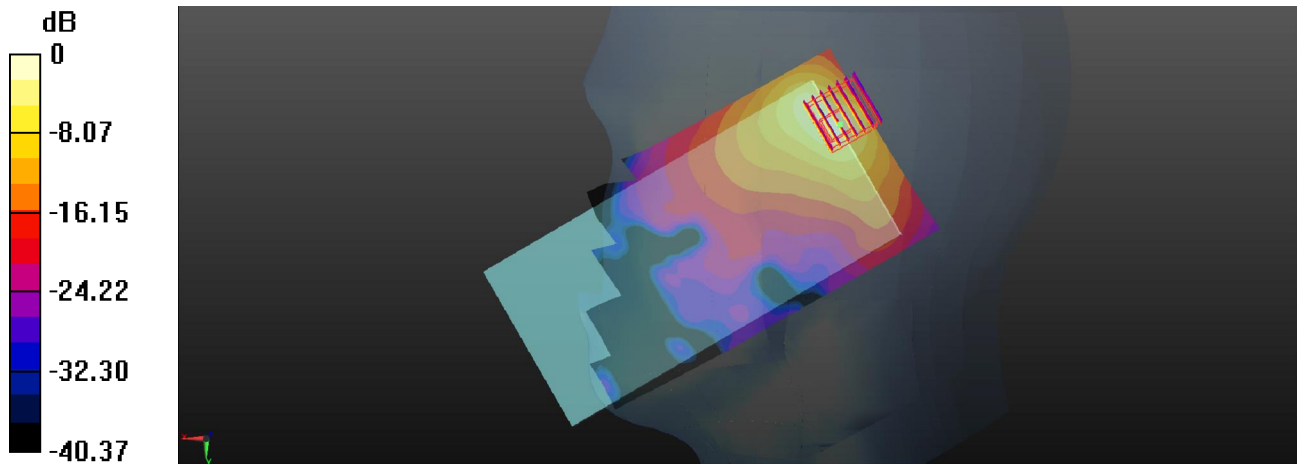
Communication System: UID 0, 802.11a (0); Frequency: 5260 MHz; Duty Cycle: 1:1.047
Medium: HSL_5G_Medium parameters used: $f = 5260$ MHz; $\sigma = 4.608$ S/m; $\epsilon_r = 36.826$;
 $\rho = 1000$ kg/m³
Ambient Temperature : 23.6 °C ; Liquid Temperature : 22.6 °C

DASY5 Configuration:

- Probe: EX3DV4 - SN3935; ConvF(5.63, 5.63, 5.63); Calibrated: 2017/12/14;
- Sensor-Surface: 1.4mm (Mechanical Surface Detection)
- Electronics: DAE4 Sn1358; Calibrated: 2017/10/24
- Phantom: SAM1; Type: QD000P40CD; Serial: TP:1753
- Measurement SW: DASY52, Version 52.8 (8); SEMCAD X Version 14.6.10 (7372)

Ch52/Area Scan (91x181x1): Interpolated grid: dx=1.000 mm, dy=1.000 mm
Maximum value of SAR (interpolated) = 2.05 W/kg

Ch52/Zoom Scan (7x7x7)/Cube 0: Measurement grid: dx=4mm, dy=4mm, dz=1.4mm
Reference Value = 9.683 V/m; Power Drift = -0.01 dB
Peak SAR (extrapolated) = 3.77 W/kg
SAR(1 g) = 0.818 W/kg; SAR(10 g) = 0.218 W/kg
Maximum value of SAR (measured) = 2.17 W/kg



0 dB = 2.17 W/kg

11_WLAN5.5GHz_802.11a 6Mbps_Right Tilted_0mm_Ch100

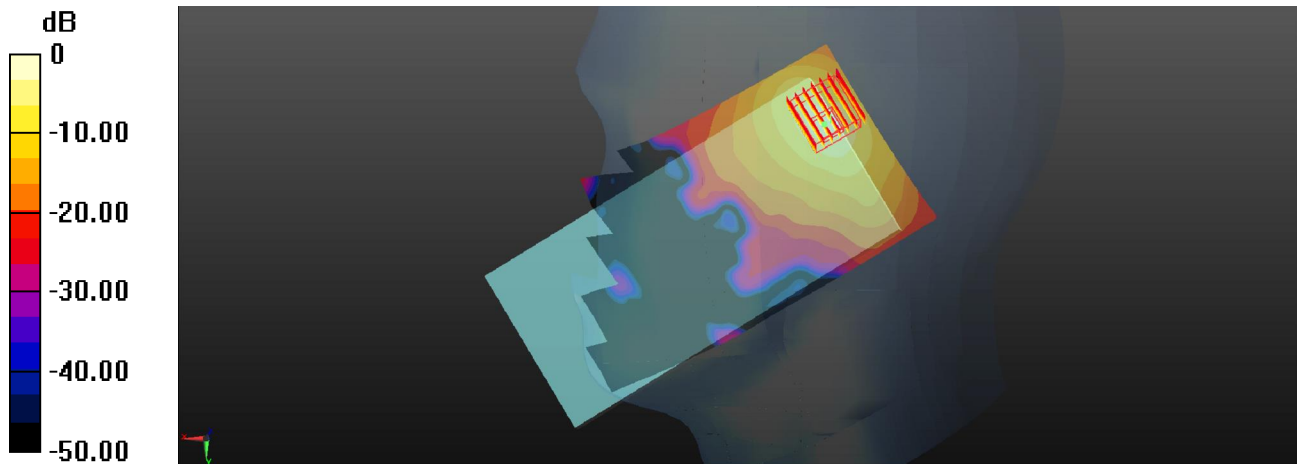
Communication System: UID 0, 802.11a (0); Frequency: 5500 MHz; Duty Cycle: 1:1.047
Medium: HSL_5G_Medium parameters used: $f = 5500$ MHz; $\sigma = 4.838$ S/m; $\epsilon_r = 36.475$;
 $\rho = 1000$ kg/m³
Ambient Temperature : 23.6 °C ; Liquid Temperature : 22.6 °C

DASY5 Configuration:

- Probe: EX3DV4 - SN3935; ConvF(5.29, 5.29, 5.29); Calibrated: 2017/12/14;
- Sensor-Surface: 1.4mm (Mechanical Surface Detection)
- Electronics: DAE4 Sn1358; Calibrated: 2017/10/24
- Phantom: SAM1; Type: QD000P40CD; Serial: TP:1753
- Measurement SW: DASY52, Version 52.8 (8); SEMCAD X Version 14.6.10 (7372)

Ch100/Area Scan (91x181x1): Interpolated grid: dx=1.000 mm, dy=1.000 mm
Maximum value of SAR (interpolated) = 1.44 W/kg

Ch100/Zoom Scan (7x7x7)/Cube 0: Measurement grid: dx=4mm, dy=4mm, dz=1.4mm
Reference Value = 9.473 V/m; Power Drift = 0.08 dB
Peak SAR (extrapolated) = 3.12 W/kg
SAR(1 g) = 0.628 W/kg; SAR(10 g) = 0.172 W/kg
Maximum value of SAR (measured) = 1.67 W/kg



0 dB = 1.67 W/kg

12_WLAN5.8GHz_802.11a 6Mbps_Right Tilted_0mm_Ch149

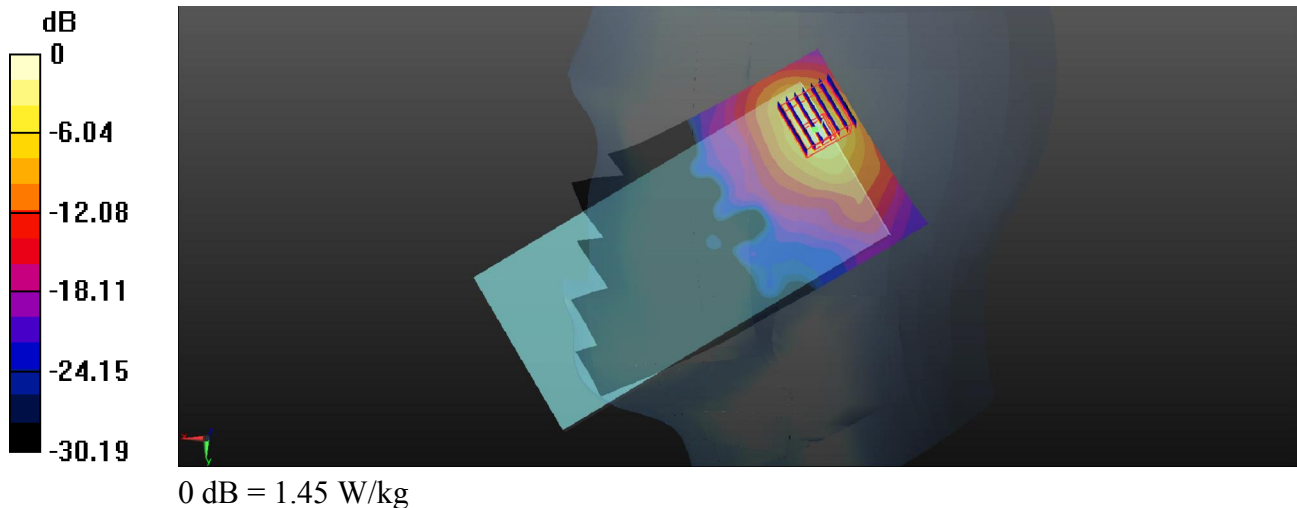
Communication System: UID 0, 802.11a (0); Frequency: 5745 MHz; Duty Cycle: 1:1.047
Medium: HSL_5G_Medium parameters used: $f = 5745$ MHz; $\sigma = 5.105$ S/m; $\epsilon_r = 36.143$;
 $\rho = 1000$ kg/m³
Ambient Temperature : 23.6 °C ; Liquid Temperature : 22.6 °C

DASY5 Configuration:

- Probe: EX3DV4 - SN3935; ConvF(5.15, 5.15, 5.15); Calibrated: 2017/12/14;
- Sensor-Surface: 1.4mm (Mechanical Surface Detection)
- Electronics: DAE4 Sn1358; Calibrated: 2017/10/24
- Phantom: SAM1; Type: QD000P40CD; Serial: TP:1753
- Measurement SW: DASY52, Version 52.8 (8); SEMCAD X Version 14.6.10 (7372)

Ch149/Area Scan (91x181x1): Interpolated grid: dx=1.000 mm, dy=1.000 mm
Maximum value of SAR (interpolated) = 1.26 W/kg

Ch149/Zoom Scan (7x7x7)/Cube 0: Measurement grid: dx=4mm, dy=4mm, dz=1.4mm
Reference Value = 8.624 V/m; Power Drift = 0.06 dB
Peak SAR (extrapolated) = 2.83 W/kg
SAR(1 g) = 0.542 W/kg; SAR(10 g) = 0.146 W/kg
Maximum value of SAR (measured) = 1.45 W/kg



13_GSM850_GPRS (4 Tx slots)_Back_5mm_Ch189

Communication System: UID 0, GPRS (GMSK 4 Tx slot) (0); Frequency: 836.4 MHz; Duty Cycle: 1:2.08

Medium: MSL_835_Medium parameters used: $f = 836.4$ MHz; $\sigma = 1.001$ S/m; $\epsilon_r = 54.817$;

$\rho = 1000$ kg/m³

Ambient Temperature : 23.5 °C ; Liquid Temperature : 22.5 °C

DASY5 Configuration:

- Probe: EX3DV4 - SN3935; ConvF(10.33, 10.33, 10.33); Calibrated: 2017/12/14;
- Sensor-Surface: 1.4mm (Mechanical Surface Detection)
- Electronics: DAE4 Sn1358; Calibrated: 2017/10/24
- Phantom: SAM1; Type: QD000P40CD; Serial: TP:1753
- Measurement SW: DASY52, Version 52.8 (8); SEMCAD X Version 14.6.10 (7372)

Ch189/Area Scan (61x121x1): Interpolated grid: dx=1.500 mm, dy=1.500 mm

Maximum value of SAR (interpolated) = 1.27 W/kg

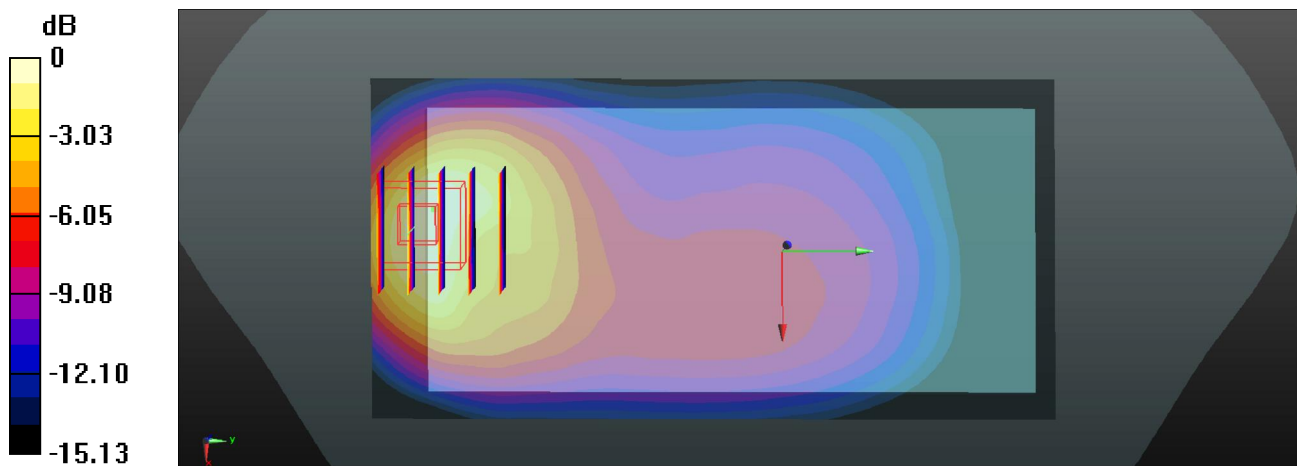
Ch189/Zoom Scan (5x5x7)/Cube 0: Measurement grid: dx=8mm, dy=8mm, dz=5mm

Reference Value = 13.61 V/m; Power Drift = -0.06 dB

Peak SAR (extrapolated) = 1.63 W/kg

SAR(1 g) = 0.773 W/kg; SAR(10 g) = 0.410 W/kg

Maximum value of SAR (measured) = 1.26 W/kg



0 dB = 1.26 W/kg

14_GSM1900_GPRS 4 Tx slots_Bottom side_5mm_Ch512

Communication System: UID 0, GPRS (GMSK 4 Tx slot) (0); Frequency: 1850.2 MHz; Duty Cycle: 1:2.08
Medium: MSL_1900_Medium parameters used: $f = 1850.2$ MHz; $\sigma = 1.494$ S/m; $\epsilon_r = 51.609$;
 $\rho = 1000$ kg/m³
Ambient Temperature : 23.5 °C ; Liquid Temperature : 22.4 °C

DASY5 Configuration:

- Probe: EX3DV4 - SN3935; ConvF(8.3, 8.3, 8.3); Calibrated: 2017/12/14;
- Sensor-Surface: 1.4mm (Mechanical Surface Detection)
- Electronics: DAE4 Sn1358; Calibrated: 2017/10/24
- Phantom: SAM1; Type: QD000P40CD; Serial: TP:1753
- Measurement SW: DASY52, Version 52.8 (8); SEMCAD X Version 14.6.10 (7372)

Ch512/Area Scan (31x61x1): Interpolated grid: dx=1.500 mm, dy=1.500 mm

Maximum value of SAR (interpolated) = 1.03 W/kg

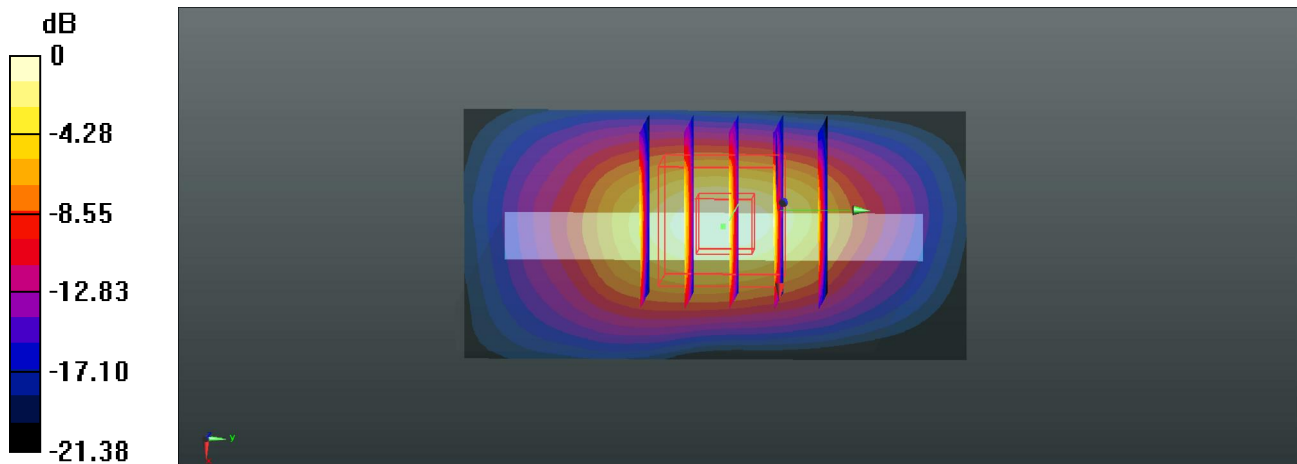
Ch512/Zoom Scan (5x5x7)/Cube 0: Measurement grid: dx=8mm, dy=8mm, dz=5mm

Reference Value = 22.00 V/m; Power Drift = 0.07 dB

Peak SAR (extrapolated) = 1.30 W/kg

SAR(1 g) = 0.655 W/kg; SAR(10 g) = 0.291 W/kg

Maximum value of SAR (measured) = 1.06 W/kg



15_WCDMA Band V_RMC 12.2Kbps_Back_5mm_Ch4233

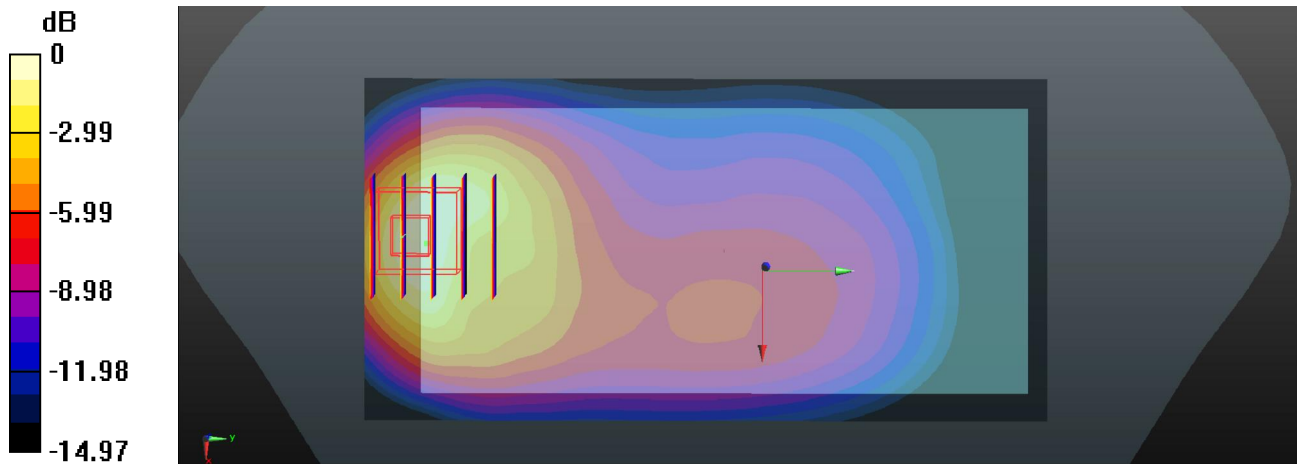
Communication System: UID 0, WCDMA (0); Frequency: 846.6 MHz; Duty Cycle: 1:1
Medium: MSL_835_Medium parameters used: $f = 846.6$ MHz; $\sigma = 1.011$ S/m; $\epsilon_r = 54.719$;
 $\rho = 1000$ kg/m³
Ambient Temperature : 23.5 °C ; Liquid Temperature : 22.5 °C

DASY5 Configuration:

- Probe: EX3DV4 - SN3935; ConvF(10.33, 10.33, 10.33); Calibrated: 2017/12/14;
- Sensor-Surface: 1.4mm (Mechanical Surface Detection)
- Electronics: DAE4 Sn1358; Calibrated: 2017/10/24
- Phantom: SAM1; Type: QD000P40CD; Serial: TP:1753
- Measurement SW: DASY52, Version 52.8 (8); SEMCAD X Version 14.6.10 (7372)

Ch4233/Area Scan (61x121x1): Interpolated grid: dx=1.500 mm, dy=1.500 mm
Maximum value of SAR (interpolated) = 1.45 W/kg

Ch4233/Zoom Scan (5x5x7)/Cube 0: Measurement grid: dx=8mm, dy=8mm, dz=5mm
Reference Value = 14.66 V/m; Power Drift = -0.01 dB
Peak SAR (extrapolated) = 1.88 W/kg
SAR(1 g) = 0.894 W/kg; SAR(10 g) = 0.476 W/kg
Maximum value of SAR (measured) = 1.42 W/kg



0 dB = 1.42 W/kg

16_WCDMA Band II_RMC 12.2Kbps_Bottom side_5mm_Ch9262

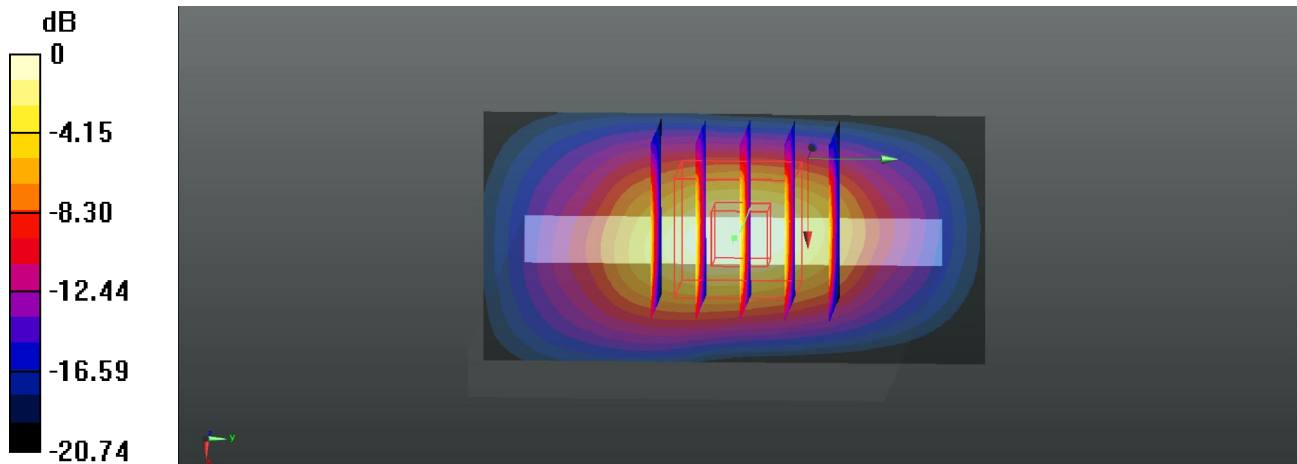
Communication System: UID 0, WCDMA (0); Frequency: 1852.4 MHz; Duty Cycle: 1:1
Medium: MSL_1900_Medium parameters used: $f = 1852.4$ MHz; $\sigma = 1.497$ S/m; $\epsilon_r = 51.601$;
 $\rho = 1000$ kg/m³
Ambient Temperature : 23.5 °C ; Liquid Temperature : 22.4 °C

DASY5 Configuration:

- Probe: EX3DV4 - SN3935; ConvF(8.3, 8.3, 8.3); Calibrated: 2017/12/14;
- Sensor-Surface: 1.4mm (Mechanical Surface Detection)
- Electronics: DAE4 Sn1358; Calibrated: 2017/10/24
- Phantom: SAM1; Type: QD000P40CD; Serial: TP:1753
- Measurement SW: DASY52, Version 52.8 (8); SEMCAD X Version 14.6.10 (7372)

Ch9262/Area Scan (31x61x1): Interpolated grid: dx=1.500 mm, dy=1.500 mm
Maximum value of SAR (interpolated) = 0.935 W/kg

Ch9262/Zoom Scan (5x5x7)/Cube 0: Measurement grid: dx=8mm, dy=8mm, dz=5mm
Reference Value = 20.80 V/m; Power Drift = 0.01 dB
Peak SAR (extrapolated) = 1.14 W/kg
SAR(1 g) = 0.567 W/kg; SAR(10 g) = 0.258 W/kg
Maximum value of SAR (measured) = 0.933 W/kg



0 dB = 0.933 W/kg

17_LTE Band 26_15M_QPSK_1RB_37offset_Back_5mm_Ch26865

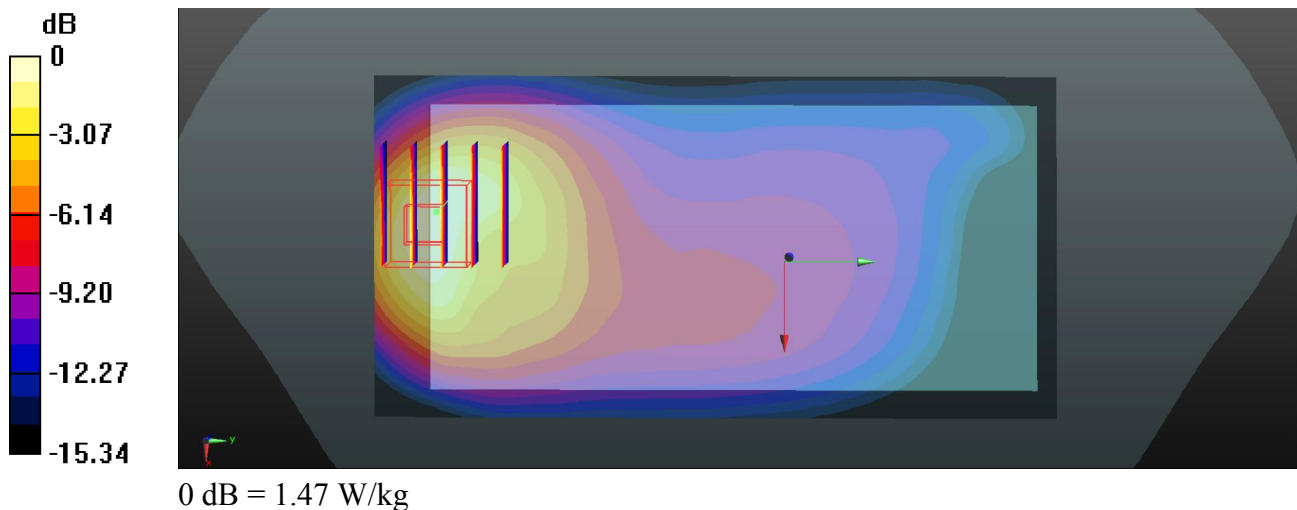
Communication System: UID 0, FDD-LTE (0); Frequency: 831.5 MHz; Duty Cycle: 1:1
Medium: MSL_835_Medium parameters used: $f = 831.5$ MHz; $\sigma = 0.996$ S/m; $\epsilon_r = 54.864$;
 $\rho = 1000$ kg/m³
Ambient Temperature : 23.5 °C ; Liquid Temperature : 22.5 °C

DASY5 Configuration:

- Probe: EX3DV4 - SN3935; ConvF(10.33, 10.33, 10.33); Calibrated: 2017/12/14;
- Sensor-Surface: 1.4mm (Mechanical Surface Detection)
- Electronics: DAE4 Sn1358; Calibrated: 2017/10/24
- Phantom: SAM1; Type: QD000P40CD; Serial: TP:1753
- Measurement SW: DASY52, Version 52.8 (8); SEMCAD X Version 14.6.10 (7372)

Ch26865/Area Scan (61x121x1): Interpolated grid: dx=1.500 mm, dy=1.500 mm
Maximum value of SAR (interpolated) = 1.51 W/kg

Ch26865/Zoom Scan (5x5x7)/Cube 0: Measurement grid: dx=8mm, dy=8mm, dz=5mm
Reference Value = 13.78 V/m; Power Drift = 0.01 dB
Peak SAR (extrapolated) = 1.95 W/kg
SAR(1 g) = 0.926 W/kg; SAR(10 g) = 0.493 W/kg
Maximum value of SAR (measured) = 1.47 W/kg



18_LTE Band 2_20M_QPSK_50RB_0offset_Bottom side_5mm_Ch19100

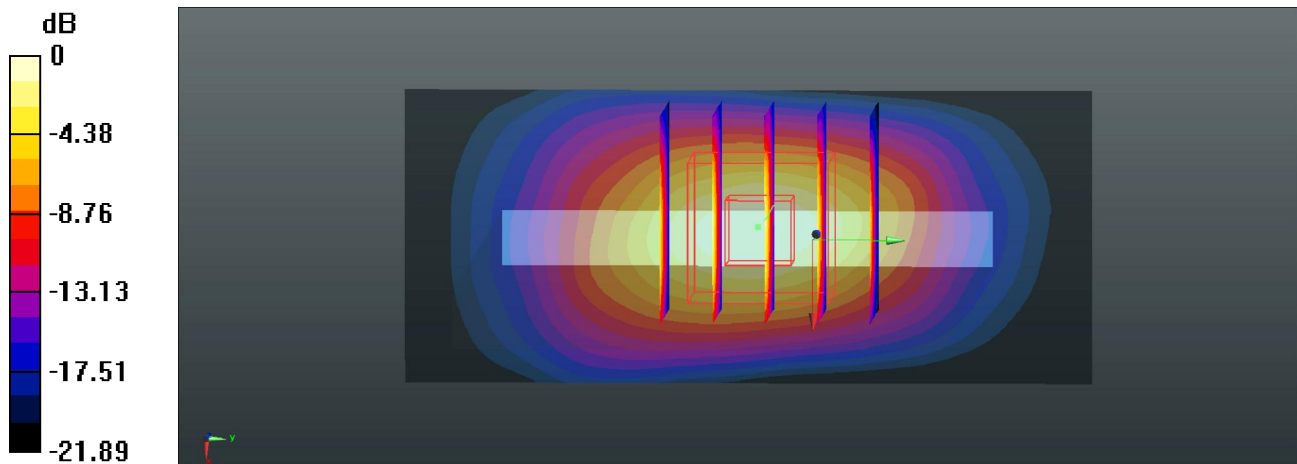
Communication System: UID 0, FDD-LTE (0); Frequency: 1900 MHz; Duty Cycle: 1:1
Medium: MSL_1900_Medium parameters used: $f = 1900$ MHz; $\sigma = 1.55$ S/m; $\epsilon_r = 51.465$;
 $\rho = 1000$ kg/m³
Ambient Temperature : 23.5 °C ; Liquid Temperature : 22.4 °C

DASY5 Configuration:

- Probe: EX3DV4 - SN3935; ConvF(8.3, 8.3, 8.3); Calibrated: 2017/12/14;
- Sensor-Surface: 1.4mm (Mechanical Surface Detection)
- Electronics: DAE4 Sn1358; Calibrated: 2017/10/24
- Phantom: SAM1; Type: QD000P40CD; Serial: TP:1753
- Measurement SW: DASY52, Version 52.8 (8); SEMCAD X Version 14.6.10 (7372)

Ch19100/Area Scan (31x71x1): Interpolated grid: dx=1.500 mm, dy=1.500 mm
Maximum value of SAR (interpolated) = 1.60 W/kg

Ch19100/Zoom Scan (5x5x7)/Cube 0: Measurement grid: dx=8mm, dy=8mm, dz=5mm
Reference Value = 25.51 V/m; Power Drift = 0.04 dB
Peak SAR (extrapolated) = 1.84 W/kg
SAR(1 g) = 0.893 W/kg; SAR(10 g) = 0.400 W/kg
Maximum value of SAR (measured) = 1.44 W/kg



0 dB = 1.44 W/kg

19_LTE Band 7_20M_QPSK_50RB_0offset_Front_5mm_Ch20850

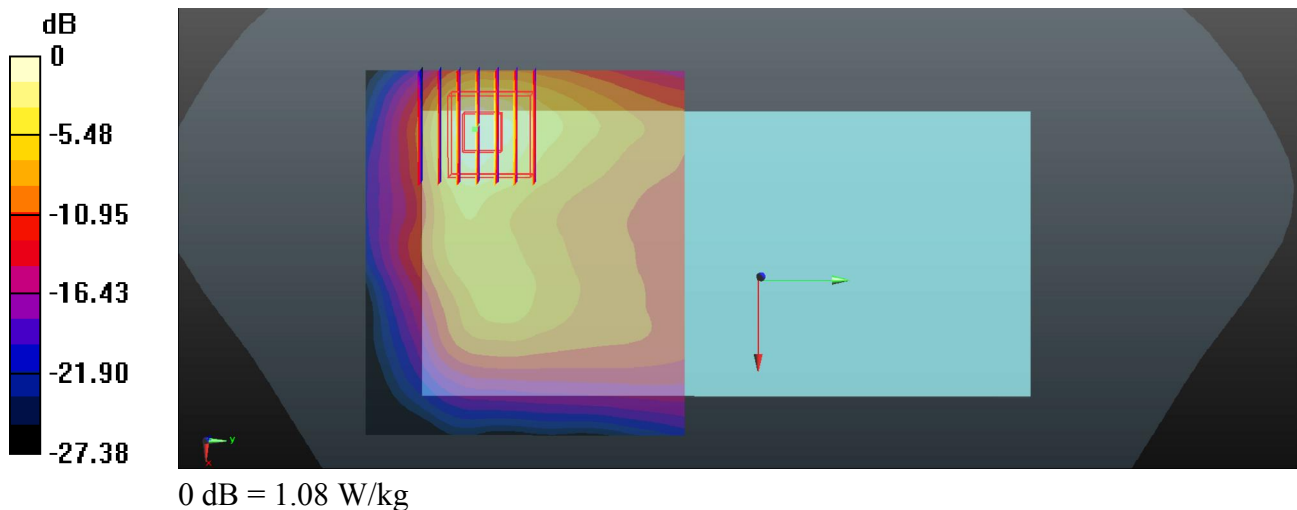
Communication System: UID 0, FDD-LTE (0); Frequency: 2510 MHz; Duty Cycle: 1:1
Medium: MSL_2600_Medium parameters used: $f = 2510$ MHz; $\sigma = 2.056$ S/m; $\epsilon_r = 53.884$;
 $\rho = 1000$ kg/m³
Ambient Temperature : 23.5 °C ; Liquid Temperature : 22.5 °C

DASY5 Configuration:

- Probe: EX3DV4 - SN3935; ConvF(7.71, 7.71, 7.71); Calibrated: 2017/12/14;
- Sensor-Surface: 1.4mm (Mechanical Surface Detection)
- Electronics: DAE4 Sn1358; Calibrated: 2017/10/24
- Phantom: SAM2; Type: QD000P40CD; Serial: TP:1754
- Measurement SW: DASY52, Version 52.8 (8); SEMCAD X Version 14.6.10 (7372)

Ch20850/Area Scan (81x71x1): Interpolated grid: dx=1.200 mm, dy=1.200 mm
Maximum value of SAR (interpolated) = 1.18 W/kg

Ch20850/Zoom Scan (7x7x7)/Cube 0: Measurement grid: dx=5mm, dy=5mm, dz=5mm
Reference Value = 4.295 V/m; Power Drift = 0.16 dB
Peak SAR (extrapolated) = 1.35 W/kg
SAR(1 g) = 0.627 W/kg; SAR(10 g) = 0.269 W/kg
Maximum value of SAR (measured) = 1.08 W/kg



20_LTE Band 38_20M_QPSK_50RB_24offset_Front_5mm_Ch38150

Communication System: UID 0, TDD-LTE (0); Frequency: 2610 MHz; Duty Cycle: 1:1.59
Medium: MSL_2600_Medium parameters used: $f = 2610$ MHz; $\sigma = 2.197$ S/m; $\epsilon_r = 53.51$;
 $\rho = 1000$ kg/m³
Ambient Temperature : 23.5 °C ; Liquid Temperature : 22.5 °C

DASY5 Configuration:

- Probe: EX3DV4 - SN3935; ConvF(7.71, 7.71, 7.71); Calibrated: 2017/12/14;
- Sensor-Surface: 1.4mm (Mechanical Surface Detection)
- Electronics: DAE4 Sn1358; Calibrated: 2017/10/24
- Phantom: SAM2; Type: QD000P40CD; Serial: TP:1754
- Measurement SW: DASY52, Version 52.8 (8); SEMCAD X Version 14.6.10 (7372)

Ch38150/Area Scan (81x71x1): Interpolated grid: dx=1.200 mm, dy=1.200 mm
Maximum value of SAR (interpolated) = 1.13 W/kg

Ch38150/Zoom Scan (7x7x7)/Cube 0: Measurement grid: dx=5mm, dy=5mm, dz=5mm
Reference Value = 4.400 V/m; Power Drift = 0.09 dB
Peak SAR (extrapolated) = 1.38 W/kg
SAR(1 g) = 0.622 W/kg; SAR(10 g) = 0.269 W/kg
Maximum value of SAR (measured) = 1.08 W/kg

