

1. External Photograph of EUT

Brand Name: Motorola / Model Name: 10012



Brand Name: Motorola / Model Name: 10012



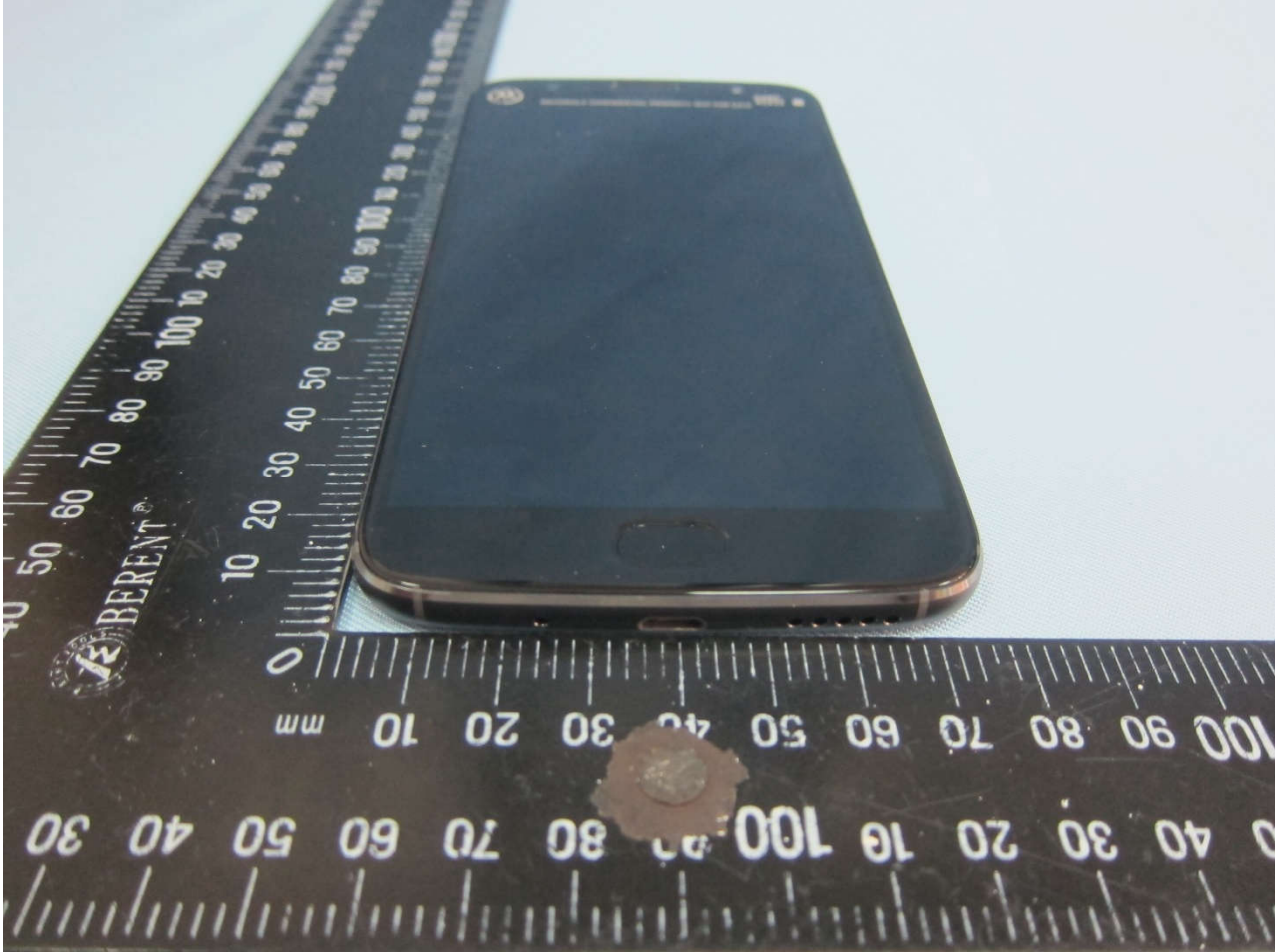
Brand Name: Motorola / Model Name: 10012



Brand Name: Motorola / Model Name: 10012



Brand Name: Motorola / Model Name: 10012



Brand Name: Motorola / Model Name: 10012





2. Photograph of Accessory

Brand Name: Motorola / Model Name: 10012

Specification of Accessory			
AC Adapter 1	Brand Name	Motorola(Salom)	Model Name SC-22
	Power Rating	I/P: 100-240Vac, 500mA, O/P: 5Vdc or 9Vdc or 12Vdc, 3000mA or 1600mA or 1200mA	
AC Adapter 2	Brand Name	Motorola(chenyang)	Model Name SC-22
	Power Rating	I/P: 100-240Vac, 500mA, O/P: 5Vdc or 9Vdc or 12Vdc, 3000mA or 1600mA or 1200mA	
AC Adapter 3	Brand Name	Motorola(LiteOn)	Model Name SC-22
	Power Rating	I/P: 100-240Vac, 500mA, O/P: 5Vdc or 9Vdc or 12Vdc, 3000mA or 1600mA or 1200mA	
Battery	Brand Name	Motorola (ATL)	Model Name HG30
	Power Rating	3.8Vdc, 3000mAh	Type Li-ion, Polymer
Earphone 1	Brand Name	Motorola(JuWei)	Model Name JWEP0998-W09R
	Signal Line Type	1.2 meter, non-shielded cable, without ferrite core	
Earphone 2	Brand Name	Motorola(Newleader)	Model Name NLD-EM307K-02SF
	Signal Line Type	1.2 meter, non-shielded cable, without ferrite core	
USB Cable	Brand Name	Motorola(Saibao)	Model Name SWT-A075A
	Signal Line Type	1.0meter, shielded cable, without core	

Remark: For accessories equipped with this EUT, please refer to the following photos.

Brand Name: Motorola / Model Name: 10012



Brand Name: Motorola / Model Name: 10012

AC Adapter 1



Brand Name: Motorola / Model Name: 10012

AC Adapter 2



Brand Name: Motorola / Model Name: 10012

AC Adapter 3



Brand Name: Motorola / Model Name: 10012



