

Motorola Mobility LLC.

222 W, Merchandise Mart Plaza, Chicago IL 60654 USA

Product Equality Declaration

We, Motorola Mobility LLC. declare on our sole responsibility for the product as below:

The differences between AP and previous as below:

■ RF section

Object	Previous 711913-02	Current 742708-02
TCXO	TXC: 7L26002007	NDK: ENG3349B
Crystal	SIWARD: XTL721-S999-286	SII: SC-32S-12.5PF
GPS TCXO	NDK: ENG3216F	TXC: 7L26002009
B40 Tx SAW	MURATA: SAFEA2G35MF0F0A	WISOL: SFDG35AQ102
Band1 SAW filter	MURATA: SAFFB2G14FA0F0A	WISOL: SFHG40YA002
Band3 SAW filter	MURATA: SAFFB1G84FL0F0A	WISOL: SFHG42YA002
Band8 SAW filter	MURATA: SAFFB942MFM0F0A	WISOL: SFH942YA002
Band40 SAW filter	MURATA: SAFFB2G35FB0F0A	WISOL: SFHG05AA002
Middle Balun	ACX: BL0605-10L1900NAT	Walsin: RFBLN06051G8DM1T69
High Balun	ACX: BL0605-10L2500NA	Walsin: RFBLN06052G5WM9T16
SP3T Switch	Maxscend: MXD8631	Airoha: AW9103
SP4T Switch	Maxscend: MXD8641	SKYWORKS: SKY13418-485LF
DUPLEXER1	Sunlord: SLFD18-2R450G-05T	ACX: DP1608-V1524CA
GPS LNA	艾为: AW5015	MXD: MXDLN16U
SAW filter	Murata: SAFFB1G56KB0F0A	WISOL: SFHG89GA002
WIFI SAW filter	Murata: SAFEA2G45MC0F0A	WISOL: SFDG45DQ102

■ HW section

● Add the following components suppliers below

Object	Previous 711913-02	Current 742708-02
Sub PCB	Tigerbuilder: WKGKA1A5-1-01	HUAXIN: WKGKA1A5-1-03

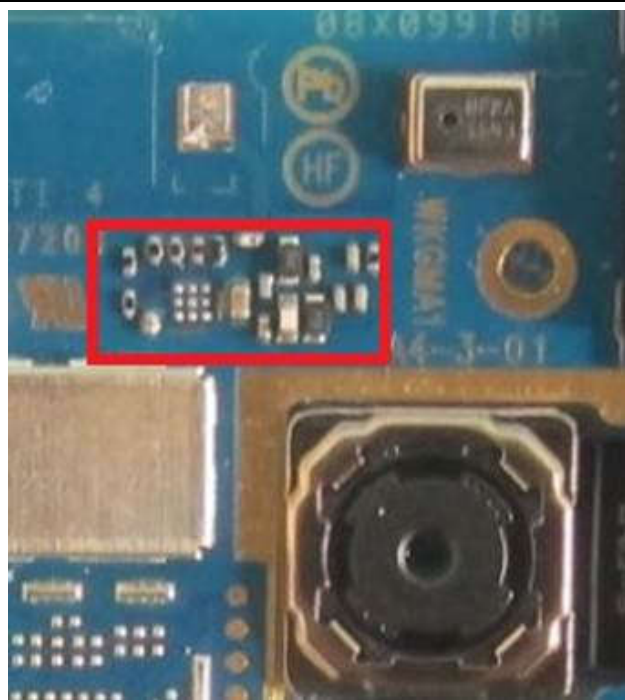
Memory	SAMSUN: KMQE10013M-B318	Hynix: H9TQ17ABJTBCUR-KUM
LED Backlight Driver	SGM: SGM3732YTN6G/TR-V1	KTD: KTD257MEHD-TR
LCM Gate Drive	TI: TPS65132A0YFFR	KTD: KTD2151EUO-TR
Main PCB	Tigerbuilder: WKGMA1B1-3-01	HUAXIN: WKGMA1B1-3-03

■ Mechanical section

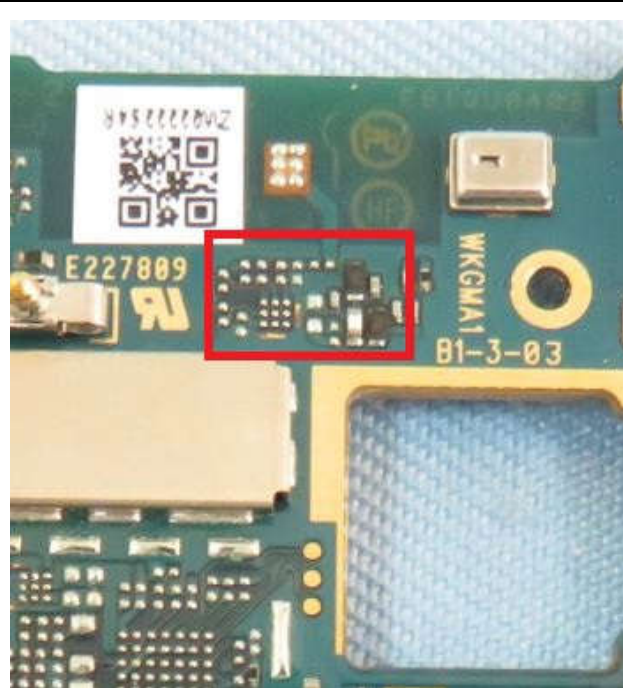
- Add the following adapter suppliers below

Object	Previous 711913-02	Current 742708-02
Adaptor	AcBel: SPN5947A C-P56US/ SPN5948A C-P57EU/ SPN5950A C-P58 UK/ SPN5952A C-P45 IN/ SPN5957A C-P59 AU	Chengyang: SPN5987A C-P56US/ SPN5985A C-P57EU/ SPN5981A C-P58 UK/ SPN5982A C-P45 IN/ SPN5983A C-P59 AU
Earphone	Hetong PY-13A1602-01KC39	Tenji TJ101247P
USB Cable	Sai Bao SYD-A015A	LIQI LQ-02300032
Battery	Battery 1 ATL GK40 Battery 2 Sunwoda GK40	Battery 1 ATL GK40
LCM&TP	TIANMA: TM050JVSP20-00 TM050JVSP18-02 TM050JVSP19-02	BOE: BV050HDM-A00-382C BV050HDM-A00-382F BV050HDM-A00-382D
Front camera	ZhengQiao: ZQ0577-Z180-F-U5-3	Borad: BLX5025Y-Z168-CF
Rear camera	O-film: L4H8A10	Q-tech: F4H8CAZ
FPS	DT: PAT1-1LE009 PAT1-1LE010	O-film: ETW-0611-00 ETW-0611-01 ETW-0611-03
SPK BOX	Keysound: QM160930GL02	LCN: BR160930LA04
Receive	Keysound: QR120620CL08	LCN: RR120620LE02
MIC	MSM: MSM421A3729H8-C	NA
Vabrator	AWA: GS-3200	NIDEC SEIMITSU: BLE-3891

Previous 711913-02



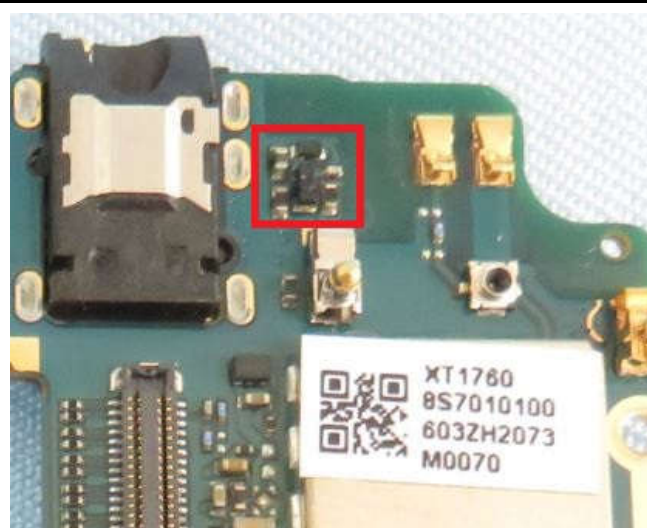
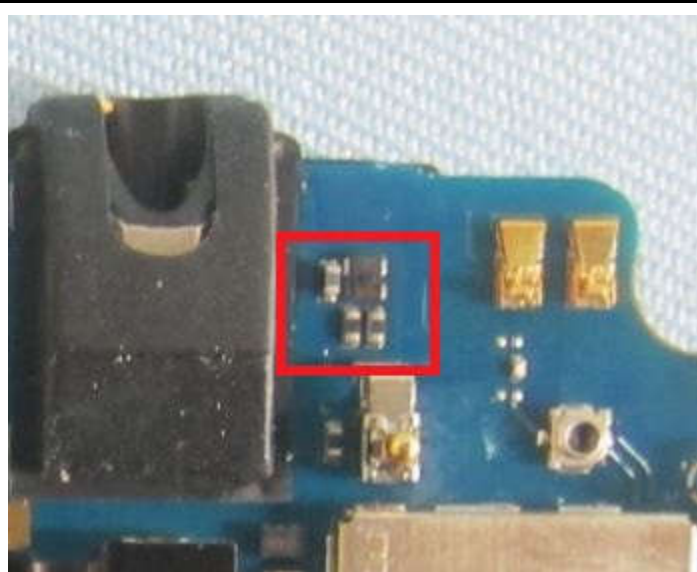
Current 742708-02



Previous: Manual to remove SAR Sensor Chip and SAR Sensor shrapnel;

Current: Optimizing the BOM patch and removing the Sar sensor and its matching circuits.

These changes have no effect on RF.



To facilitate material selection and procurement. These changes have no effect on RF.



These changes have no effect on RF.

Except listings above, the others are all the same.

Should you have any questions or comments regarding this matter, please have my best

Lin BiaoChun

Contact Person: Lin BiaoChun
COMPANY: Motorola Mobility LLC.
Tel:86-18150396560
E-Mail: Linbc@lenovo.com