

#01_HAC_E_GSM1900_GSM Voice_Ch661;WPC

Communication System: GSM-FDD (TDMA, GMSK); Frequency: 1880 MHz; Duty Cycle: 1:8.3

Medium: Air Medium parameters used: $\sigma = 0$ S/m, $\epsilon_r = 1$; $\rho = 1000$ kg/m³

Ambient Temperature : 23.4 °C

DASY5 Configuration

- Probe: ER3DV6 - SN2358; ConvF(1, 1, 1); Calibrated: 2017/1/19;
- Sensor-Surface: (Fix Surface)
- Electronics: DAE3 Sn495; Calibrated: 2017/5/22
- Phantom: HAC Test Arch with AMCC; Type: SD HAC P01 BA;
- Measurement SW: DASY52, Version 52.8 (8); SEMCAD X Version 14.6.10 (7373)

E Scan - ER3D: 15 mm from Probe Center to the Device/Hearing Aid Compatibility

Test (101x101x1): Interpolated grid: dx=0.5000 mm, dy=0.5000 mm

Device Reference Point: 0, 0, -6.3 mm

Reference Value = 27.53 V/m; Power Drift = 0.19 dB

Applied MIF = 3.63 dB

RF audio interference level = 29.70 dBV/m

Emission category: M4

MIF scaled E-field

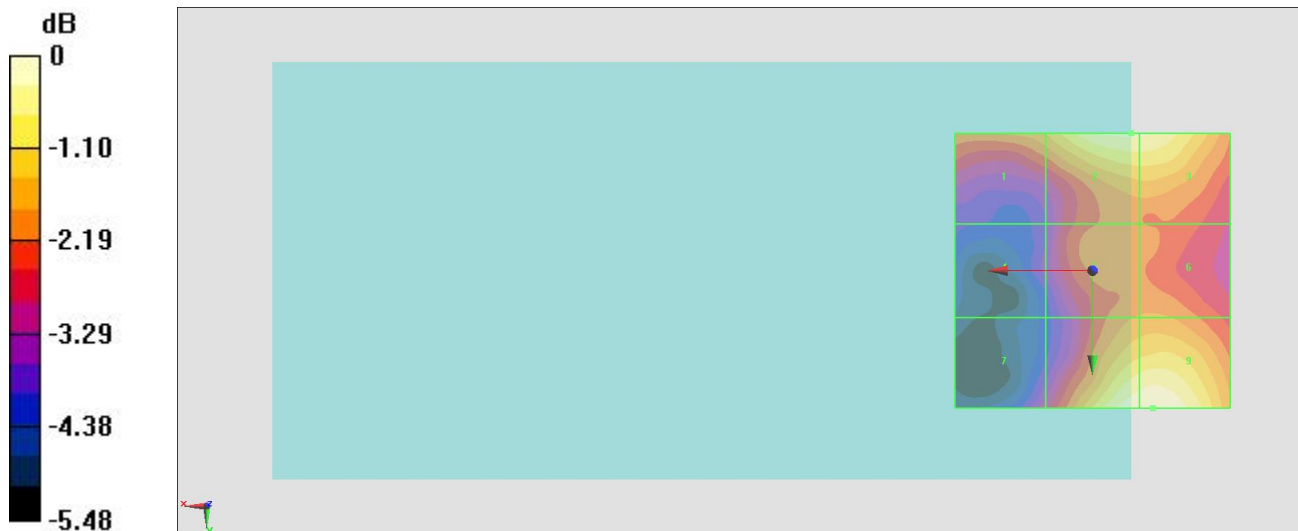
| | | |
|--|--|--|
| Grid 1 M4 28.26 dBV/m | Grid 2 M4 29.45 dBV/m | Grid 3 M4 29.43 dBV/m |
| Grid 4 M4 26.24 dBV/m | Grid 5 M4 27.93 dBV/m | Grid 6 M4 27.97 dBV/m |
| Grid 7 M4 26.71 dBV/m | Grid 8 M4 29.67 dBV/m | Grid 9 M4 29.7 dBV/m |

Cursor:

Total = 29.70 dBV/m

E Category: M4

Location: -11, 25, 8.7 mm



0 dB = 30.56 V/m = 29.70 dBV/m