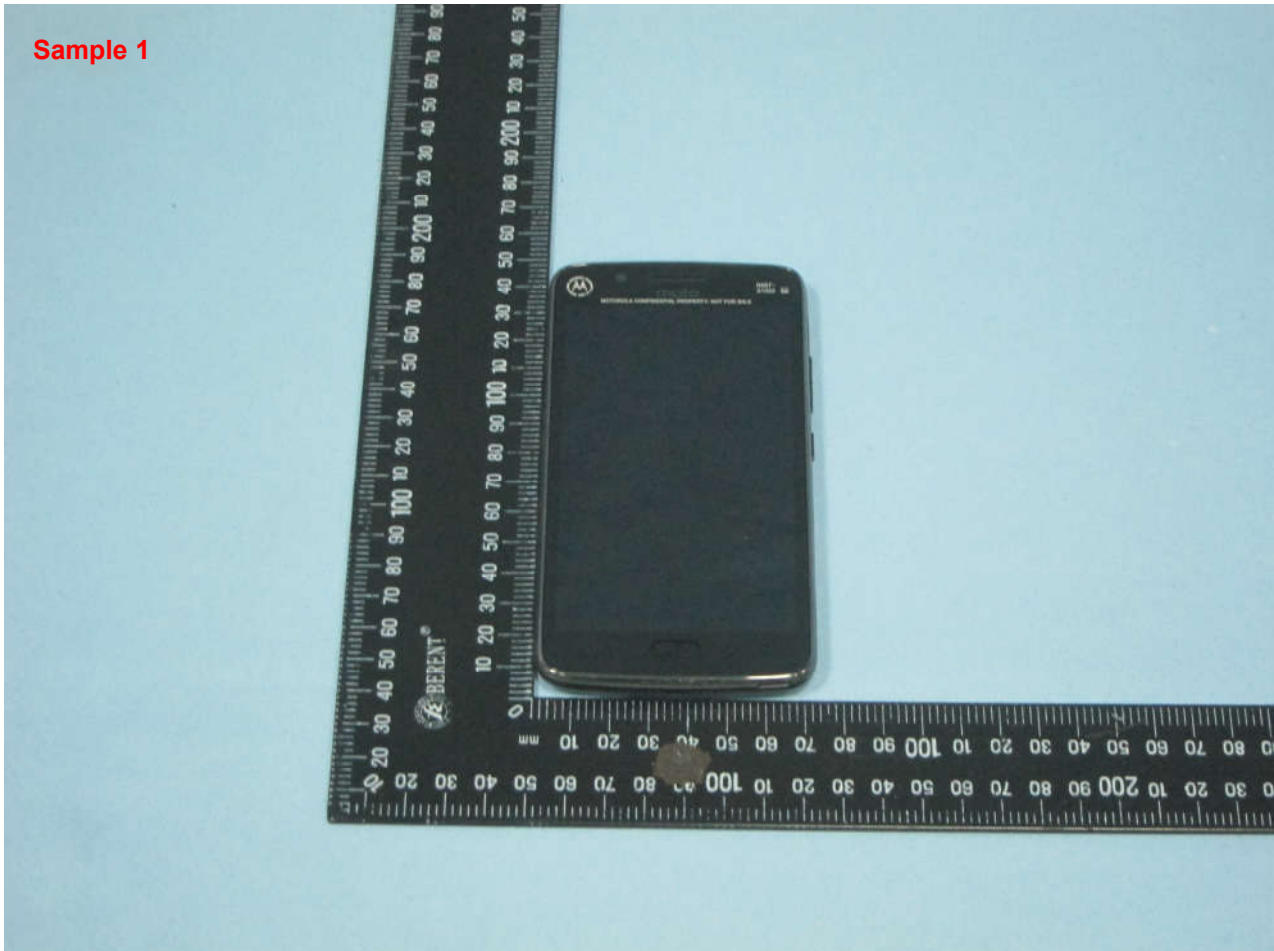


1. External Photograph of EUT

Brand Name: Motorola; Model Name: 9845, 9850

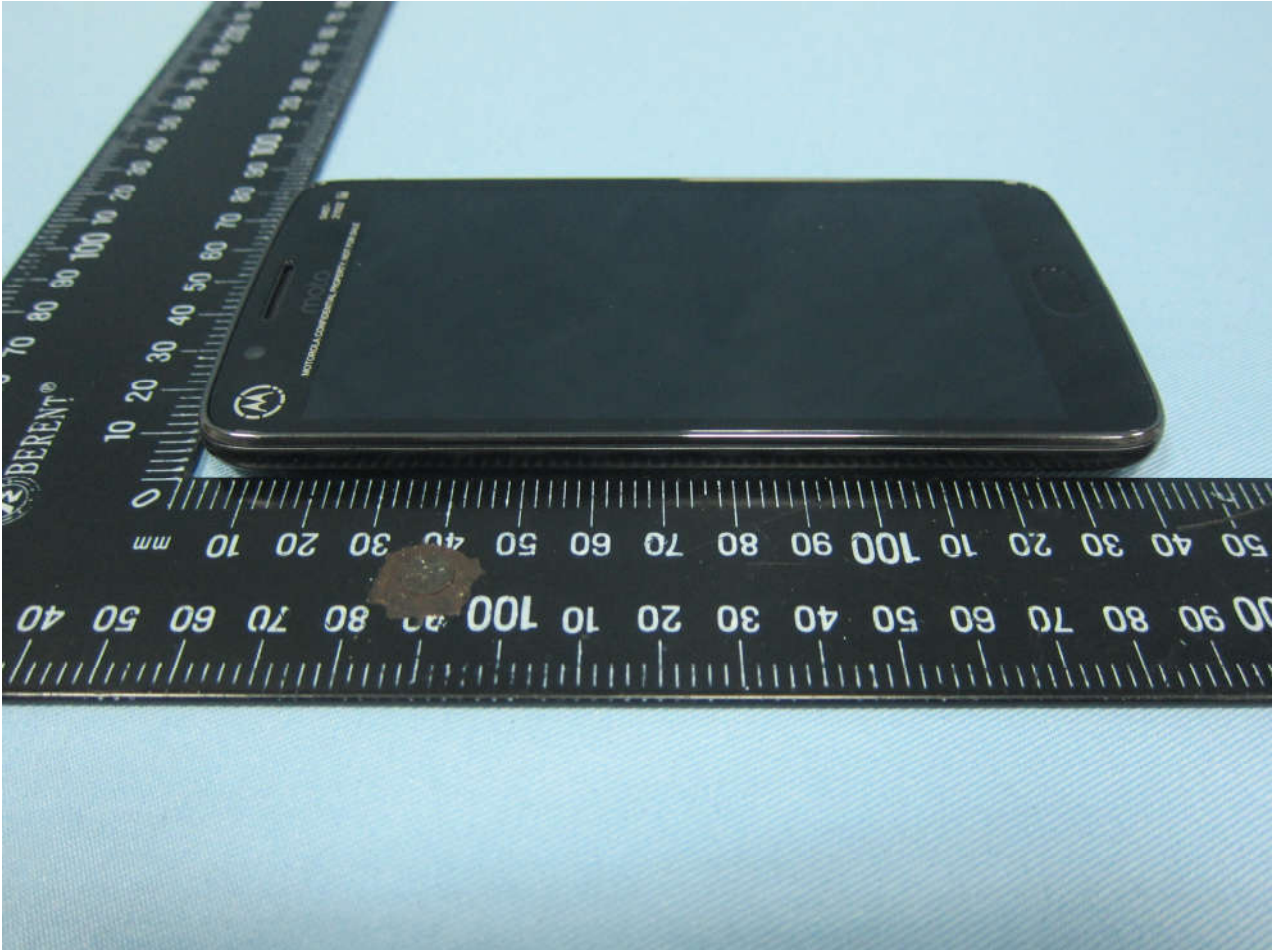


Brand Name: Motorola; Model Name: 9845, 9850

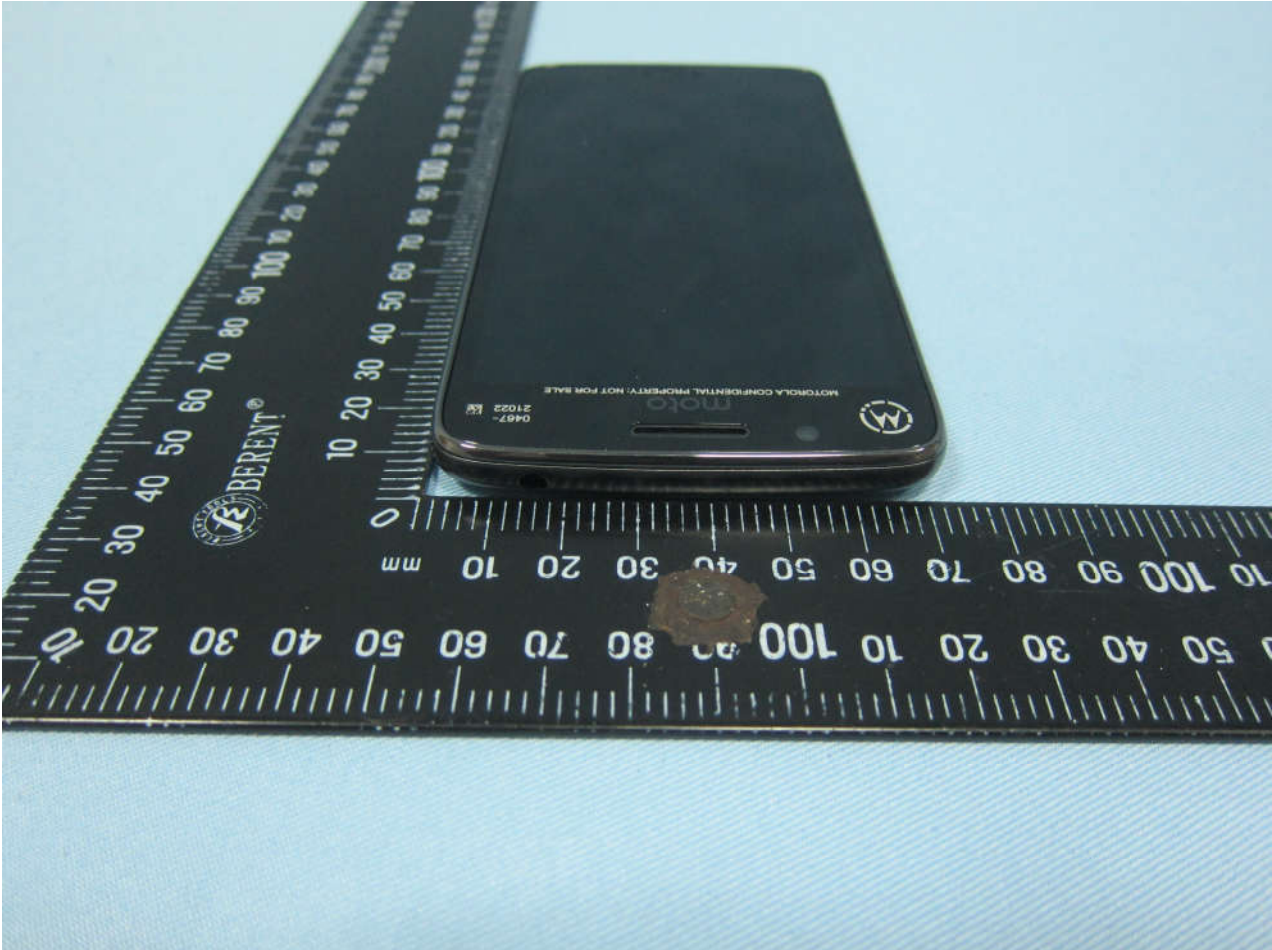




Brand Name: Motorola; Model Name: 9845, 9850

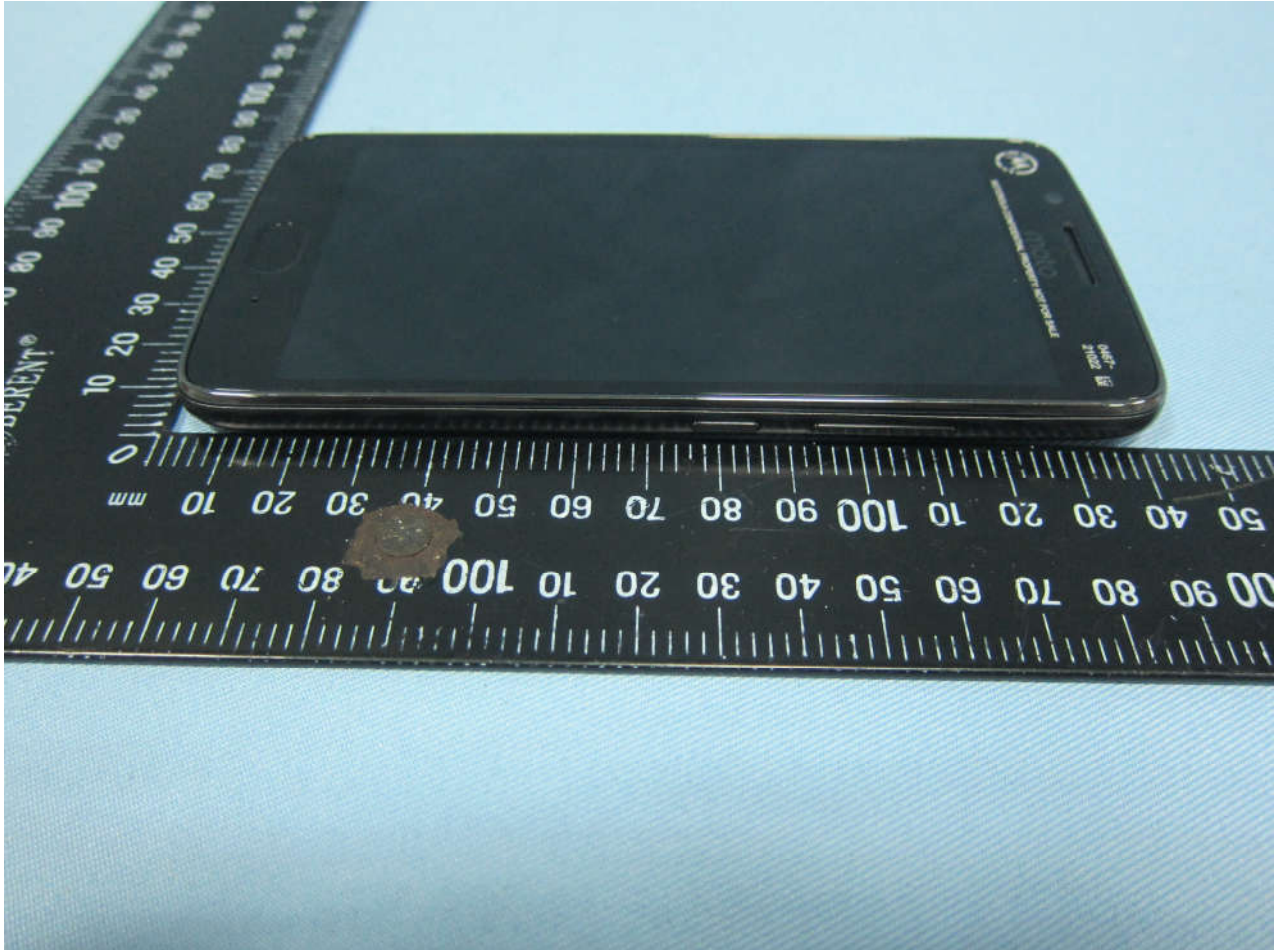


Brand Name: Motorola; Model Name: 9845, 9850





Brand Name: Motorola; Model Name: 9845, 9850



Brand Name: Motorola; Model Name: 9845, 9850

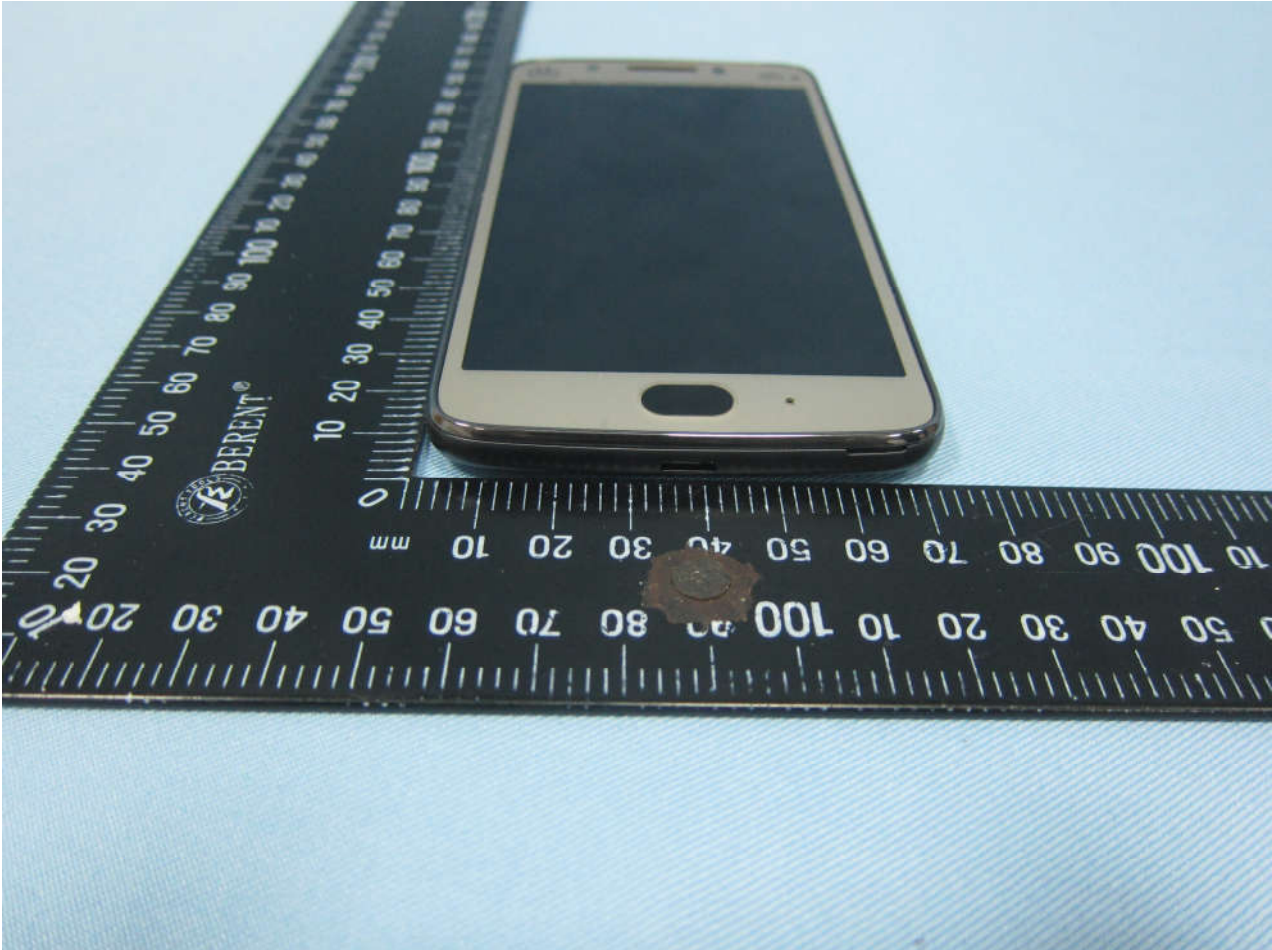


Brand Name: Motorola; Model Name: 9845, 9850

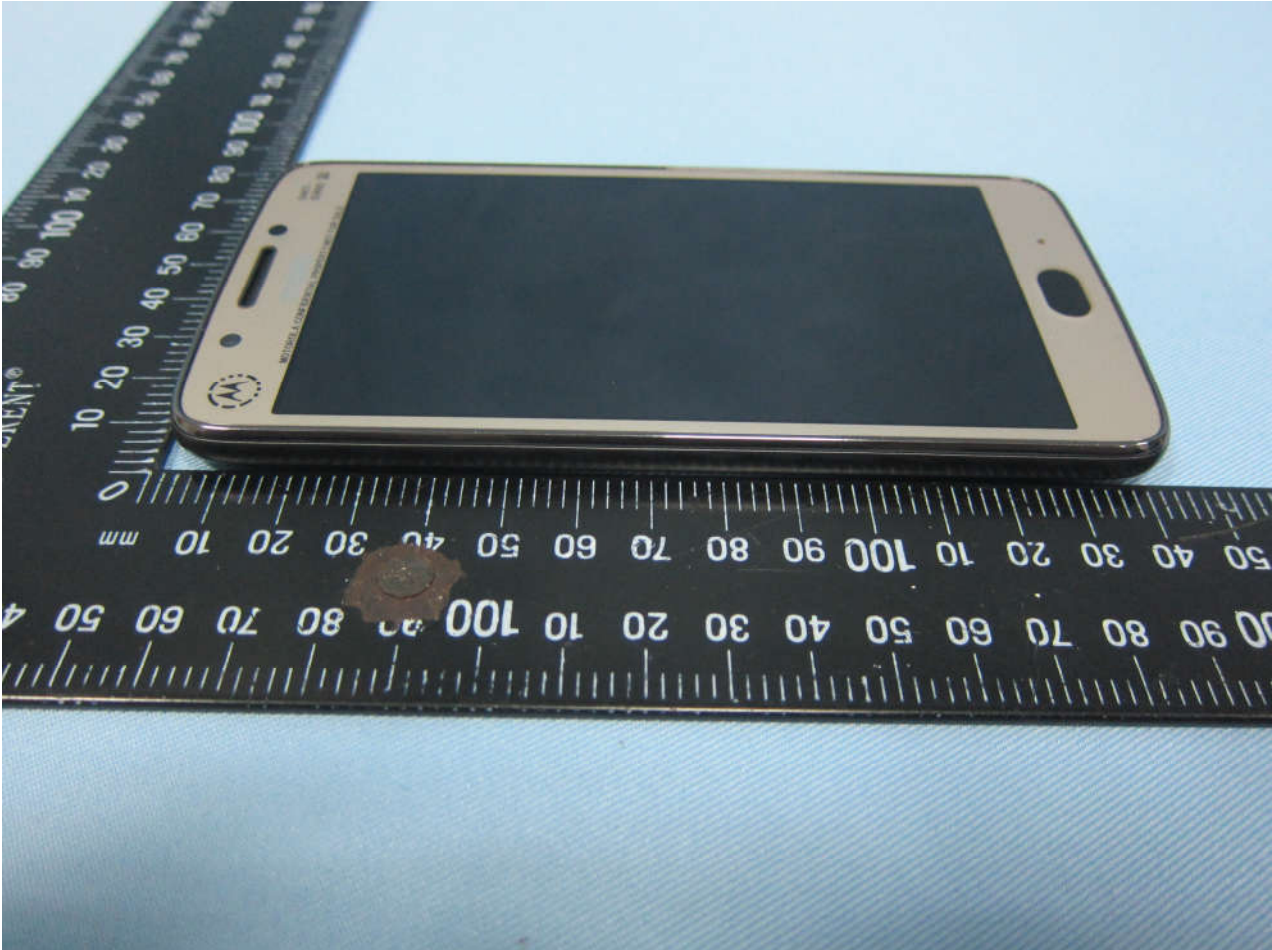
Sample 2



Brand Name: Motorola; Model Name: 9845, 9850



Brand Name: Motorola; Model Name: 9845, 9850

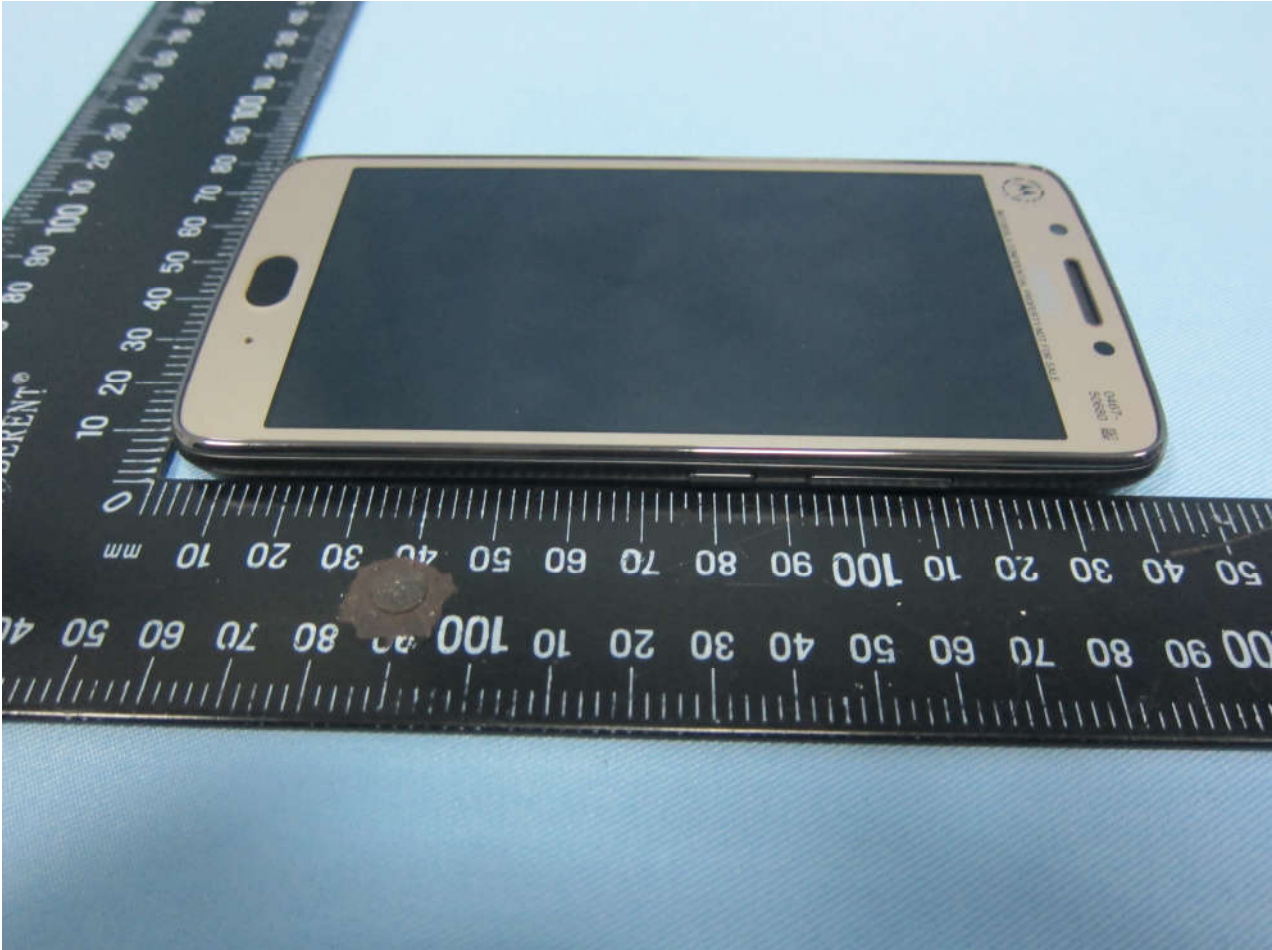


Brand Name: Motorola; Model Name: 9845, 9850





Brand Name: Motorola; Model Name: 9845, 9850



Brand Name: Motorola; Model Name: 9845, 9850





2. Photograph of Accessory

Brand Name: Motorola; Model Name: 9845, 9850

List of Accessory:

Specification of Accessory			
AC Adapter	Brand Name	Motorola (Acbel)	Model Name C-P35
	Power Rating	I/P: 100-240 Vac, 300mA, O/P: 5.2Vdc, 2000mA	
Battery	Brand Name	Motorola (ATL)	Model Name GK40
	Power Rating	3.8Vdc,2685/2800mAh (Min/Typ)	Type Li-ion
Earphone	Brand Name	Motorola	Model Name SJYN1181B
	Signal Line Type	1.2 meter, non-shielded cable, without ferrite core	
USB Cable	Brand Name	Motorola (Liqi)	Model Name L25W-051000100AL
	Signal Line Type	1.0 meter, non-shielded cable, without ferrite core	

Remark: For accessories equipped with this EUT, please refer to the following photos.

Brand Name: Motorola; Model Name: 9845, 9850

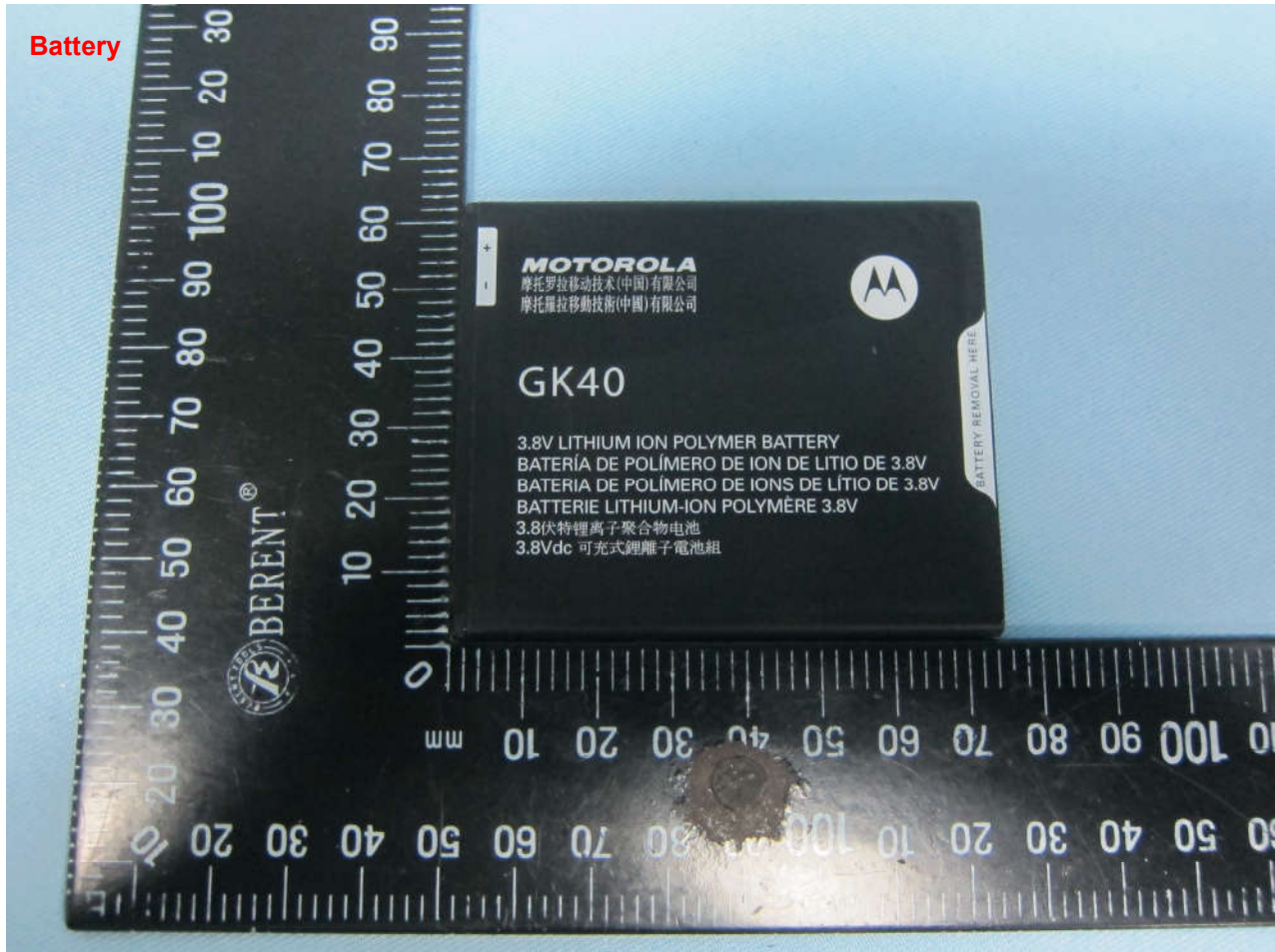


Brand Name: Motorola; Model Name: 9845, 9850

AC Adapter



Brand Name: Motorola; Model Name: 9845, 9850



Brand Name: Motorola; Model Name: 9845, 9850

