

### #01\_HAC\_E\_GSM850\_GSM Voice\_Ch128

Communication System: GSM-FDD (TDMA, GMSK); Frequency: 824.2 MHz; Duty Cycle: 1:8.3  
 Medium: Air Medium parameters used:  $\sigma = 0$  S/m,  $\epsilon_r = 1$ ;  $\rho = 1000$  kg/m<sup>3</sup>  
 Ambient Temperature : 23.2 °C

#### DASY5 Configuration

- Probe: ER3DV6 - SN2358; ConvF(1, 1, 1); Calibrated: 2016/1/19;
- Sensor-Surface: (Fix Surface)
- Electronics: DAE4 Sn1399; Calibrated: 2015/11/23
- Phantom: HAC Test Arch with AMCC; Type: SD HAC P01 BA;
- Measurement SW: DASY52, Version 52.8 (7); SEMCAD X Version 14.6.10 (7164)

#### Ch128/E Scan - ER3D: 15 mm from Probe Center to the Device/Hearing Aid

**Compatibility Test (101x101x1):** Interpolated grid: dx=0.5000 mm, dy=0.5000 mm

Device Reference Point: 0, 0, -6.3 mm

Reference Value = 82.04 V/m; Power Drift = -0.01 dB

Applied MIF = 3.63 dB

RF audio interference level = 40.16 dBV/m

**Emission category: M3**

MIF scaled E-field

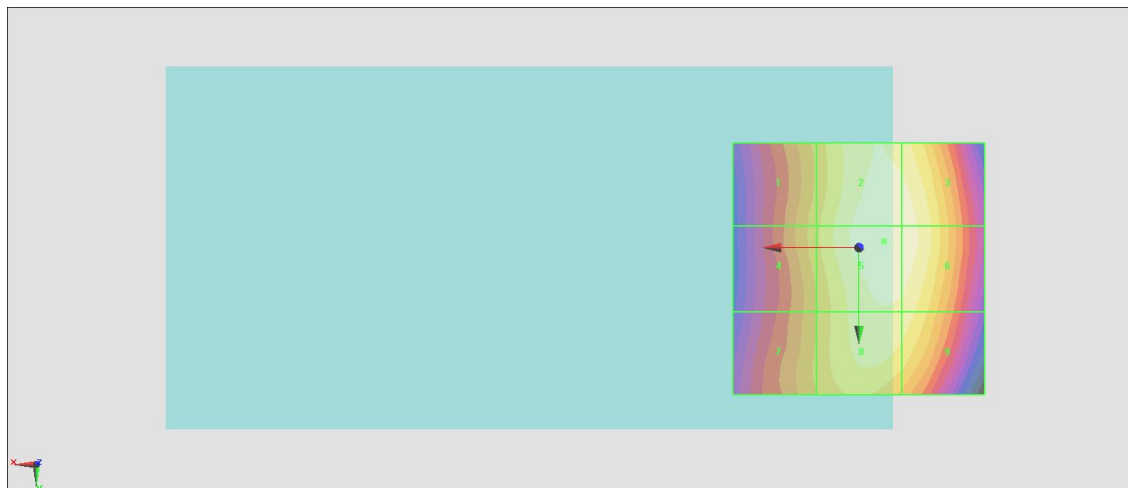
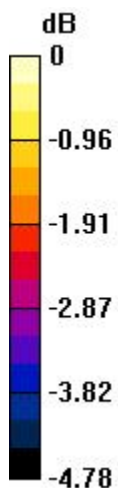
Grid 1 <b>M4</b> <b>39.12 dBV/m</b>	Grid 2 <b>M3</b> <b>40.11 dBV/m</b>	Grid 3 <b>M3</b> <b>40.08 dBV/m</b>
Grid 4 <b>M4</b> <b>39.13 dBV/m</b>	Grid 5 <b>M3</b> <b>40.16 dBV/m</b>	Grid 6 <b>M3</b> <b>40.11 dBV/m</b>
Grid 7 <b>M4</b> <b>38.96 dBV/m</b>	Grid 8 <b>M4</b> <b>39.81 dBV/m</b>	Grid 9 <b>M4</b> <b>39.74 dBV/m</b>

**Cursor:**

Total = 40.16 dBV/m

E Category: M3

Location: -5, -1.3, 8.7 mm



0 dB = 101.9 V/m = 40.16 dBV/m

## #02\_HAC\_E\_GSM1900\_GSM Voice\_Ch512

Communication System: GSM-FDD (TDMA, GMSK); Frequency: 1850.2 MHz; Duty Cycle: 1:8.3

Medium: Air Medium parameters used:  $\sigma = 0$  S/m,  $\epsilon_r = 1$ ;  $\rho = 1000$  kg/m<sup>3</sup>

Ambient Temperature : 23.2 °C

### DASY5 Configuration

- Probe: ER3DV6 - SN2358; ConvF(1, 1, 1); Calibrated: 2016/1/19;
- Sensor-Surface: (Fix Surface)
- Electronics: DAE4 Sn1399; Calibrated: 2015/11/23
- Phantom: HAC Test Arch with AMCC; Type: SD HAC P01 BA;
- Measurement SW: DASY52, Version 52.8 (7); SEMCAD X Version 14.6.10 (7164)

### Ch512/E Scan - ER3D: 15 mm from Probe Center to the Device/Hearing Aid

**Compatibility Test (101x101x1):** Interpolated grid: dx=0.5000 mm, dy=0.5000 mm

Device Reference Point: 0, 0, -6.3 mm

Reference Value = 11.63 V/m; Power Drift = 0.12 dB

Applied MIF = 3.63 dB

RF audio interference level = 33.05 dBV/m

**Emission category: M3**

MIF scaled E-field

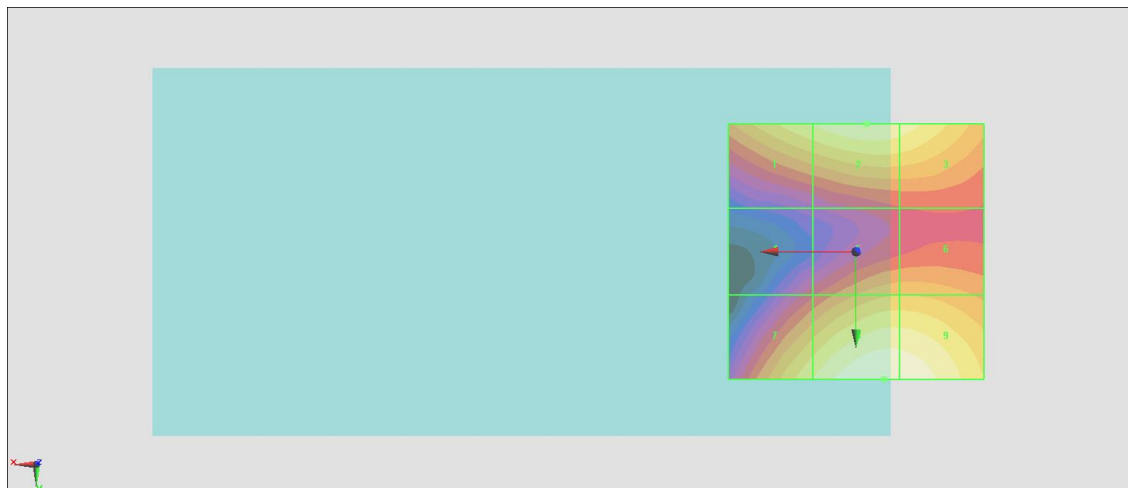
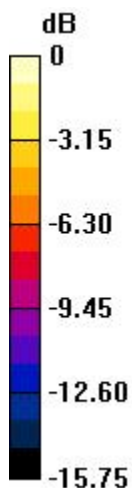
Grid 1 <b>M3</b> <b>31.11 dBV/m</b>	Grid 2 <b>M3</b> <b>31.99 dBV/m</b>	Grid 3 <b>M3</b> <b>31.6 dBV/m</b>
Grid 4 <b>M4</b> <b>25.54 dBV/m</b>	Grid 5 <b>M4</b> <b>28.83 dBV/m</b>	Grid 6 <b>M4</b> <b>28.84 dBV/m</b>
Grid 7 <b>M3</b> <b>31.03 dBV/m</b>	Grid 8 <b>M3</b> <b>33.05 dBV/m</b>	Grid 9 <b>M3</b> <b>32.94 dBV/m</b>

**Cursor:**

Total = 33.05 dBV/m

E Category: M3

Location: -5.5, 25, 8.7 mm



0 dB = 44.94 V/m = 33.05 dBV/m

### #03\_HAC\_E\_CDMA BC0\_1xRTT, RC1 SO3, 18th Rate\_Ch1013;Battery 2

Communication System: CDMA2000, RC1, SO3, 1/8th Rate 25 fr.; Frequency: 824.7 MHz; Duty Cycle: 1:8.3

Medium: Air Medium parameters used:  $\sigma = 0$  S/m,  $\epsilon_r = 1$ ;  $\rho = 1000$  kg/m<sup>3</sup>

Ambient Temperature : 23.2 °C

#### DASY5 Configuration

- Probe: ER3DV6 - SN2358; ConvF(1, 1, 1); Calibrated: 2016/1/19;
- Sensor-Surface: (Fix Surface)
- Electronics: DAE4 Sn1399; Calibrated: 2015/11/23
- Phantom: HAC Test Arch with AMCC; Type: SD HAC P01 BA;
- Measurement SW: DASY52, Version 52.8 (7); SEMCAD X Version 14.6.10 (7164)

### Ch1013/E Scan - ER3D: 15 mm from Probe Center to the Device/Hearing Aid Compatibility Test (101x101x1):

Interpolated grid: dx=0.5000 mm, dy=0.5000 mm

Device Reference Point: 0, 0, -6.3 mm

Reference Value = 29.42 V/m; Power Drift = 0.14 dB

Applied MIF = 3.26 dB

RF audio interference level = 31.09 dBV/m

**Emission category: M4**

MIF scaled E-field

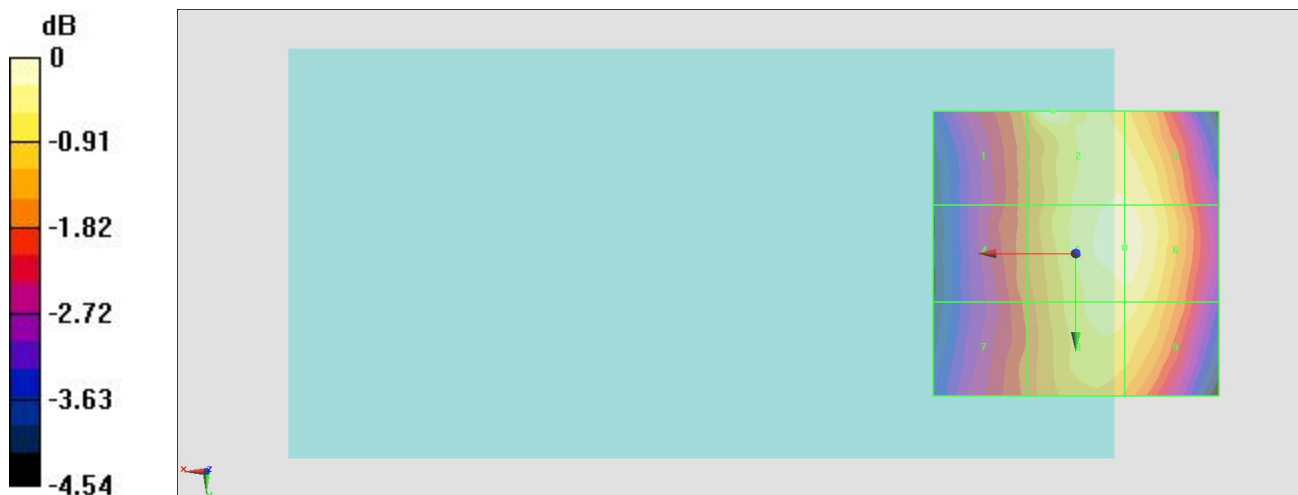
Grid 1 <b>M4</b> <b>29.86 dBV/m</b>	Grid 2 <b>M4</b> <b>31.09 dBV/m</b>	Grid 3 <b>M4</b> <b>30.84 dBV/m</b>
Grid 4 <b>M4</b> <b>29.55 dBV/m</b>	Grid 5 <b>M4</b> <b>30.97 dBV/m</b>	Grid 6 <b>M4</b> <b>30.97 dBV/m</b>
Grid 7 <b>M4</b> <b>29.43 dBV/m</b>	Grid 8 <b>M4</b> <b>30.67 dBV/m</b>	Grid 9 <b>M4</b> <b>30.66 dBV/m</b>

**Cursor:**

Total = 31.09 dBV/m

E Category: M4

Location: 4, -25, 8.7 mm



0 dB = 35.87 V/m = 31.09 dBV/m

### #04\_HAC\_E\_CDMA BC1\_1xRTT, RC1 SO3, 18th Rate\_Ch25

Communication System: CDMA2000, RC1, SO3, 1/8th Rate 25 fr.; Frequency: 1851.25 MHz; Duty Cycle: 1:8.3

Medium: Air Medium parameters used:  $\sigma = 0$  S/m,  $\epsilon_r = 1$ ;  $\rho = 1000$  kg/m<sup>3</sup>

Ambient Temperature : 23.2 °C

#### DASY5 Configuration

- Probe: ER3DV6 - SN2358; ConvF(1, 1, 1); Calibrated: 2016/1/19;
- Sensor-Surface: (Fix Surface)
- Electronics: DAE4 Sn1399; Calibrated: 2015/11/23
- Phantom: HAC Test Arch with AMCC; Type: SD HAC P01 BA;
- Measurement SW: DASY52, Version 52.8 (7); SEMCAD X Version 14.6.10 (7164)

#### Ch25/E Scan - ER3D: 15 mm from Probe Center to the Device/Hearing Aid

**Compatibility Test (101x101x1):** Interpolated grid: dx=0.5000 mm, dy=0.5000 mm

Device Reference Point: 0, 0, -6.3 mm

Reference Value = 7.097 V/m; Power Drift = 0.18 dB

Applied MIF = 3.26 dB

RF audio interference level = 27.64 dBV/m

**Emission category: M4**

MIF scaled E-field

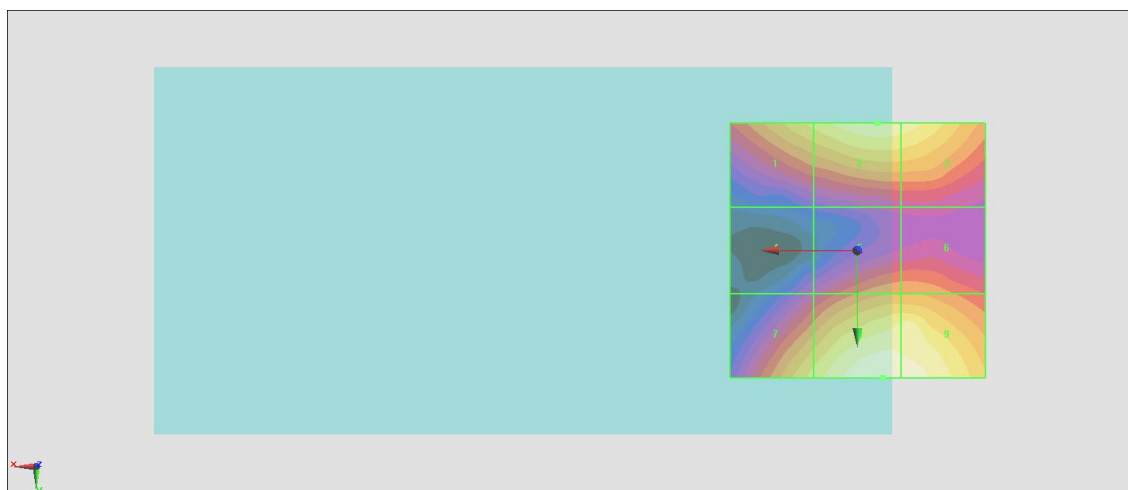
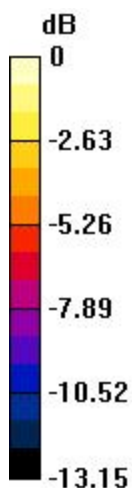
Grid 1 <b>M4</b> <b>25.36 dBV/m</b>	Grid 2 <b>M4</b> <b>26.66 dBV/m</b>	Grid 3 <b>M4</b> <b>26.45 dBV/m</b>
Grid 4 <b>M4</b> <b>20.22 dBV/m</b>	Grid 5 <b>M4</b> <b>23.36 dBV/m</b>	Grid 6 <b>M4</b> <b>23.36 dBV/m</b>
Grid 7 <b>M4</b> <b>25.5 dBV/m</b>	Grid 8 <b>M4</b> <b>27.64 dBV/m</b>	Grid 9 <b>M4</b> <b>27.45 dBV/m</b>

**Cursor:**

Total = 27.64 dBV/m

E Category: M4

Location: -5, 25, 8.7 mm



0 dB = 24.10 V/m = 27.64 dBV/m

### #05\_HAC\_E\_CDMA BC10\_1xRTT, RC1 SO3, 18th Rate\_Ch684

Communication System: CDMA2000, RC1, SO3, 1/8th Rate 25 fr.; Frequency: 823.1 MHz; Duty Cycle: 1:8.3

Medium: Air Medium parameters used:  $\sigma = 0$  S/m,  $\epsilon_r = 1$ ;  $\rho = 1000$  kg/m<sup>3</sup>

Ambient Temperature : 23.2 °C

#### DASY5 Configuration

- Probe: ER3DV6 - SN2358; ConvF(1, 1, 1); Calibrated: 2016/1/19;
- Sensor-Surface: (Fix Surface)
- Electronics: DAE4 Sn1399; Calibrated: 2015/11/23
- Phantom: HAC Test Arch with AMCC; Type: SD HAC P01 BA;
- Measurement SW: DASY52, Version 52.8 (7); SEMCAD X Version 14.6.10 (7164)

#### Ch684/E Scan - ER3D: 15 mm from Probe Center to the Device/Hearing Aid

**Compatibility Test (101x101x1):** Interpolated grid: dx=0.5000 mm, dy=0.5000 mm

Device Reference Point: 0, 0, -6.3 mm

Reference Value = 27.31 V/m; Power Drift = 0.12 dB

Applied MIF = 3.26 dB

RF audio interference level = 30.77 dBV/m

**Emission category: M4**

MIF scaled E-field

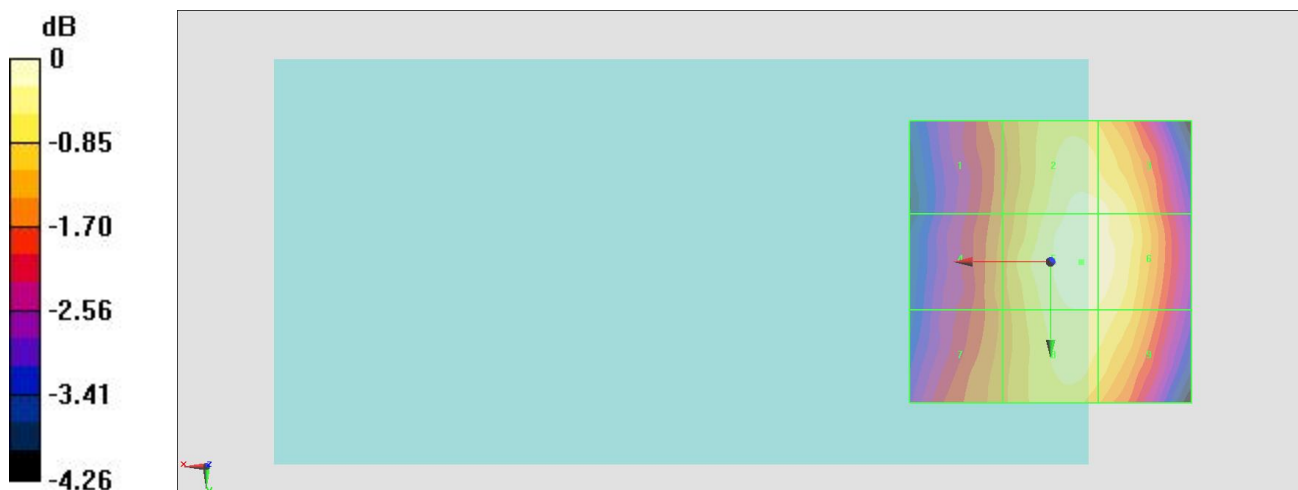
Grid 1 <b>M4</b> <b>29.39 dBV/m</b>	Grid 2 <b>M4</b> <b>30.6 dBV/m</b>	Grid 3 <b>M4</b> <b>30.57 dBV/m</b>
Grid 4 <b>M4</b> <b>29.54 dBV/m</b>	Grid 5 <b>M4</b> <b>30.77 dBV/m</b>	Grid 6 <b>M4</b> <b>30.69 dBV/m</b>
Grid 7 <b>M4</b> <b>29.56 dBV/m</b>	Grid 8 <b>M4</b> <b>30.48 dBV/m</b>	Grid 9 <b>M4</b> <b>30.45 dBV/m</b>

**Cursor:**

Total = 30.77 dBV/m

E Category: M4

Location: -5.5, 0, 8.7 mm



0 dB = 34.54 V/m = 30.77 dBV/m

## #06\_HAC\_E\_LTE Band 41\_20M\_QPSK\_1\_0\_Ch40185;Battery 2

Communication System: LTE-TDD (SC-FDMA, 1 RB, 20 MHz, QPSK); Frequency: 2549.5 MHz; Duty Cycle: 1:1.59

Medium: Air Medium parameters used:  $\sigma = 0$  S/m,  $\epsilon_r = 1$ ;  $\rho = 1000$  kg/m<sup>3</sup>

Ambient Temperature : 23.2 °C

### DASY5 Configuration

- Probe: ER3DV6 - SN2358; ConvF(1, 1, 1); Calibrated: 2016/1/19;
- Sensor-Surface: (Fix Surface)
- Electronics: DAE4 Sn1399; Calibrated: 2015/11/23
- Phantom: HAC Test Arch with AMCC; Type: SD HAC P01 BA;
- Measurement SW: DASY52, Version 52.8 (7); SEMCAD X Version 14.6.10 (7164)

### Ch40185/E Scan - ER3D: 15 mm from Probe Center to the Device/Hearing Aid Compatibility Test (101x101x1): Interpolated grid: dx=0.5000 mm, dy=0.5000 mm

Device Reference Point: 0, 0, -6.3 mm

Reference Value = 18.30 V/m; Power Drift = 0.00 dB

Applied MIF = -1.62 dB

RF audio interference level = 25.82 dBV/m

**Emission category: M4**

MIF scaled E-field

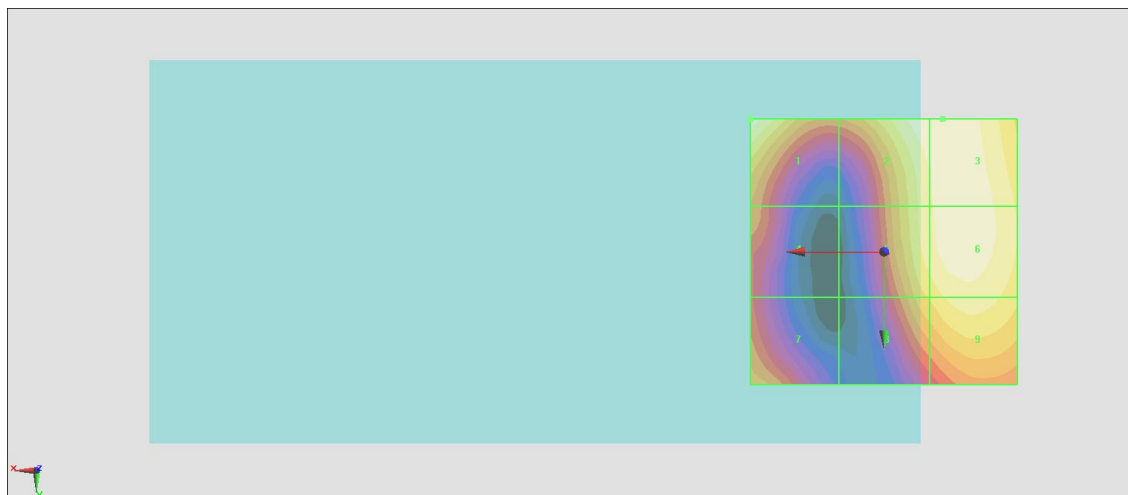
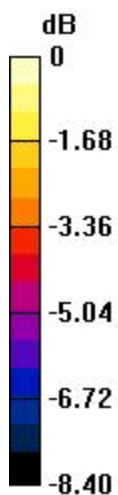
Grid 1 <b>M4</b> <b>25.67 dBV/m</b>	Grid 2 <b>M4</b> <b>25.75 dBV/m</b>	Grid 3 <b>M4</b> <b>25.82 dBV/m</b>
Grid 4 <b>M4</b> <b>22.98 dBV/m</b>	Grid 5 <b>M4</b> <b>25.14 dBV/m</b>	Grid 6 <b>M4</b> <b>25.69 dBV/m</b>
Grid 7 <b>M4</b> <b>23.35 dBV/m</b>	Grid 8 <b>M4</b> <b>24.23 dBV/m</b>	Grid 9 <b>M4</b> <b>25.04 dBV/m</b>

**Cursor:**

Total = 25.82 dBV/m

E Category: M4

Location: -11, -25, 8.7 mm



0 dB = 19.54 V/m = 25.82 dBV/m

**#07\_HAC\_E\_LTE Band 41\_20M\_16QAM\_1\_0\_Ch40185**

Communication System: LTE-TDD (SC-FDMA, 1 RB, 20 MHz, 16-QAM); Frequency: 2549.5 MHz; Duty Cycle: 1:1.59

Medium: Air Medium parameters used:  $\sigma = 0$  S/m,  $\epsilon_r = 1$ ;  $\rho = 1000$  kg/m<sup>3</sup>

Ambient Temperature : 23.2 °C

**DASY5 Configuration**

- Probe: ER3DV6 - SN2358; ConvF(1, 1, 1); Calibrated: 2016/1/19;
- Sensor-Surface: (Fix Surface)
- Electronics: DAE4 Sn1399; Calibrated: 2015/11/23
- Phantom: HAC Test Arch with AMCC; Type: SD HAC P01 BA;
- Measurement SW: DASY52, Version 52.8 (7); SEMCAD X Version 14.6.10 (7164)

**Ch40185/E Scan - ER3D: 15 mm from Probe Center to the Device/Hearing Aid**

**Compatibility Test (101x101x1):** Interpolated grid: dx=0.5000 mm, dy=0.5000 mm

Device Reference Point: 0, 0, -6.3 mm

Reference Value = 16.60 V/m; Power Drift = 0.04 dB

Applied MIF = -1.44 dB

RF audio interference level = 25.57 dBV/m

**Emission category: M4**

MIF scaled E-field

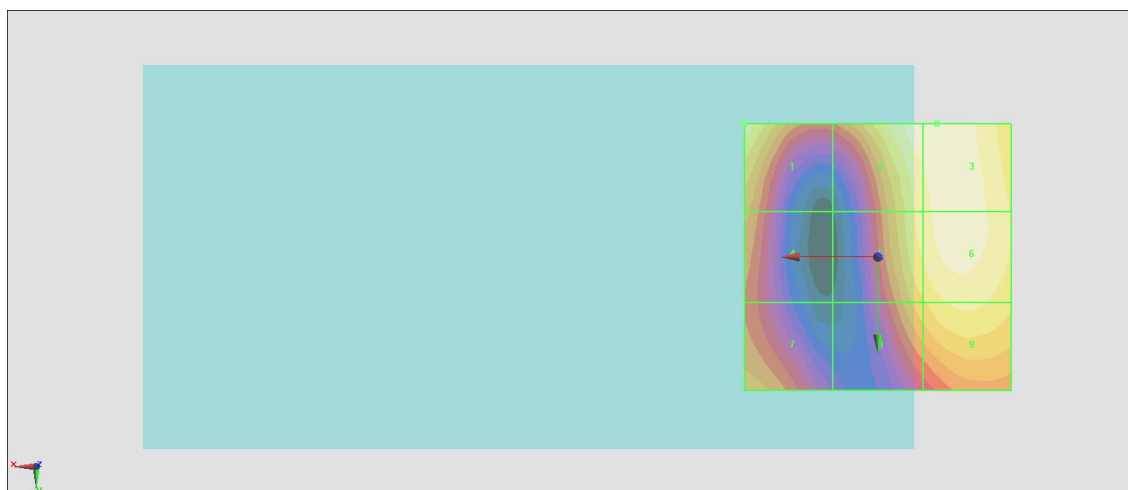
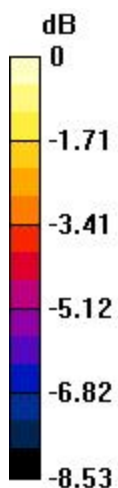
Grid 1 <b>M4</b> <b>24.9 dBV/m</b>	Grid 2 <b>M4</b> <b>25.49 dBV/m</b>	Grid 3 <b>M4</b> <b>25.57 dBV/m</b>
Grid 4 <b>M4</b> <b>22.91 dBV/m</b>	Grid 5 <b>M4</b> <b>24.74 dBV/m</b>	Grid 6 <b>M4</b> <b>25.33 dBV/m</b>
Grid 7 <b>M4</b> <b>23.07 dBV/m</b>	Grid 8 <b>M4</b> <b>23.79 dBV/m</b>	Grid 9 <b>M4</b> <b>24.6 dBV/m</b>

**Cursor:**

Total = 25.57 dBV/m

E Category: M4

Location: -11, -25, 8.7 mm



0 dB = 18.99 V/m = 25.57 dBV/m