

#01_HAC_E_GSM850_GSM Voice_Ch189

Communication System: GSM-FDD (TDMA, GMSK); Frequency: 836.4 MHz; Duty Cycle: 1:8.3
 Medium: Air Medium parameters used: $\sigma = 0$ S/m, $\epsilon_r = 1$; $\rho = 1000$ kg/m³
 Ambient Temperature : 23.2 °C

DASY5 Configuration

- Probe: ER3DV6 - SN2358; ConvF(1, 1, 1); Calibrated: 2016/1/19;
- Sensor-Surface: (Fix Surface)
- Electronics: DAE3 Sn495; Calibrated: 2016/5/27
- Phantom: HAC Test Arch with AMCC; Type: SD HAC P01 BA;
- Measurement SW: DASY52, Version 52.8 (7); SEMCAD X Version 14.6.10 (7164)

Ch189/E Scan - ER3D: 15 mm from Probe Center to the Device/Hearing Aid

Compatibility Test (101x101x1): Interpolated grid: dx=0.5000 mm, dy=0.5000 mm

Device Reference Point: 0, 0, -6.3 mm

Reference Value = 20.74 V/m; Power Drift = -0.05 dB

Applied MIF = 3.63 dB

RF audio interference level = 32.16 dBV/m

Emission category: M4

MIF scaled E-field

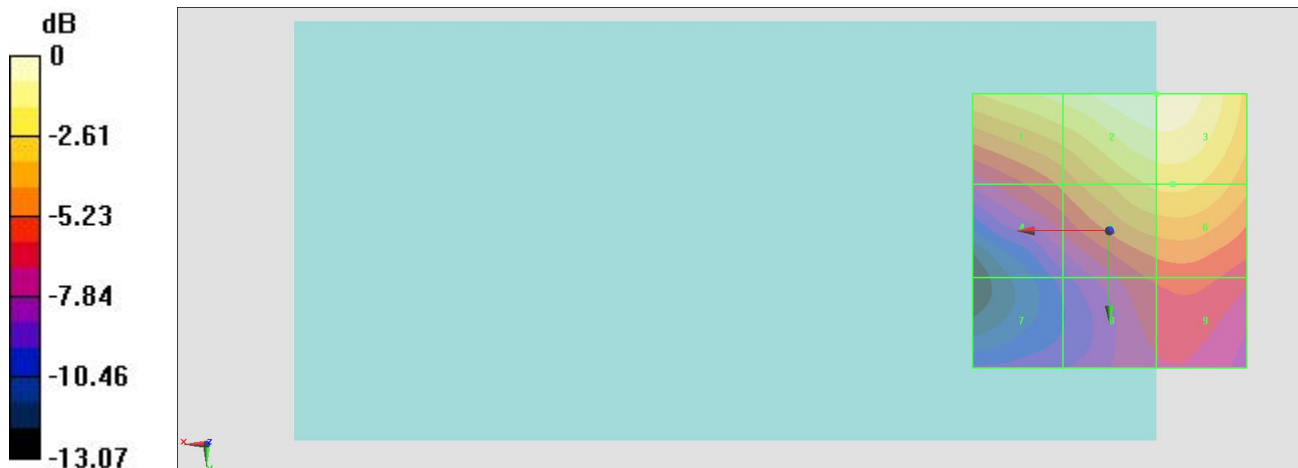
Grid 1 M4 30.83 dBV/m	Grid 2 M4 32.17 dBV/m	Grid 3 M4 32.17 dBV/m
Grid 4 M4 27.2 dBV/m	Grid 5 M4 29.74 dBV/m	Grid 6 M4 29.84 dBV/m
Grid 7 M4 23.42 dBV/m	Grid 8 M4 26.27 dBV/m	Grid 9 M4 26.52 dBV/m

Cursor:

Total = 32.17 dBV/m

E Category: M4

Location: -8.5, -25, 8.7 mm



0 dB = 40.57 V/m = 32.16 dBV/m

#02_HAC_E_GSM1900_GSM Voice_Ch512

Communication System: GSM-FDD (TDMA, GMSK); Frequency: 1850.2 MHz; Duty Cycle: 1:8.3

Medium: Air Medium parameters used: $\sigma = 0$ S/m, $\epsilon_r = 1$; $\rho = 1000$ kg/m³

Ambient Temperature : 23.2 °C

DASY5 Configuration

- Probe: ER3DV6 - SN2358; ConvF(1, 1, 1); Calibrated: 2016/1/19;
- Sensor-Surface: (Fix Surface)
- Electronics: DAE3 Sn495; Calibrated: 2016/5/27
- Phantom: HAC Test Arch with AMCC; Type: SD HAC P01 BA;
- Measurement SW: DASY52, Version 52.8 (7); SEMCAD X Version 14.6.10 (7164)

Ch512/E Scan - ER3D: 15 mm from Probe Center to the Device/Hearing Aid

Compatibility Test (101x101x1): Interpolated grid: dx=0.5000 mm, dy=0.5000 mm

Device Reference Point: 0, 0, -6.3 mm

Reference Value = 15.76 V/m; Power Drift = 0.02 dB

Applied MIF = 3.63 dB

RF audio interference level = 31.35 dBV/m

Emission category: M3

MIF scaled E-field

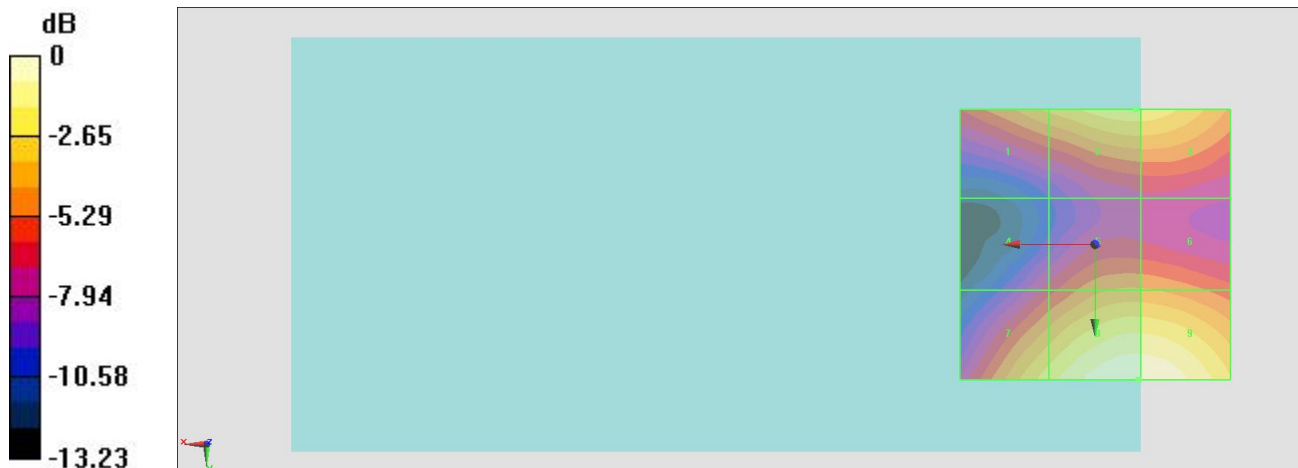
Grid 1 M4 28.06 dBV/m	Grid 2 M4 29.39 dBV/m	Grid 3 M4 29.37 dBV/m
Grid 4 M4 24.86 dBV/m	Grid 5 M4 27.15 dBV/m	Grid 6 M4 27.12 dBV/m
Grid 7 M4 29.28 dBV/m	Grid 8 M3 31.35 dBV/m	Grid 9 M3 31.35 dBV/m

Cursor:

Total = 31.35 dBV/m

E Category: M3

Location: -8, 25, 8.7 mm



0 dB = 36.93 V/m = 31.35 dBV/m

#03_HAC_E_CDMA BC0_1xRTT, RC1 SO3, 18th Rate_Ch384

Communication System: CDMA2000, RC1, SO3, 1/8th Rate 25 fr.; Frequency: 836.52 MHz; Duty Cycle: 1:8.3

Medium: Air Medium parameters used: $\sigma = 0$ S/m, $\epsilon_r = 1$; $\rho = 1000$ kg/m³

Ambient Temperature : 23.2 °C

DASY5 Configuration

- Probe: ER3DV6 - SN2358; ConvF(1, 1, 1); Calibrated: 2016/1/19;
- Sensor-Surface: (Fix Surface)
- Electronics: DAE3 Sn495; Calibrated: 2016/5/27
- Phantom: HAC Test Arch with AMCC; Type: SD HAC P01 BA;
- Measurement SW: DASY52, Version 52.8 (7); SEMCAD X Version 14.6.10 (7164)

Ch384/E Scan - ER3D: 15 mm from Probe Center to the Device/Hearing Aid

Compatibility Test (101x101x1): Interpolated grid: dx=0.5000 mm, dy=0.5000 mm

Device Reference Point: 0, 0, -6.3 mm

Reference Value = 15.19 V/m; Power Drift = 0.04 dB

Applied MIF = 3.26 dB

RF audio interference level = 26.00 dBV/m

Emission category: M4

MIF scaled E-field

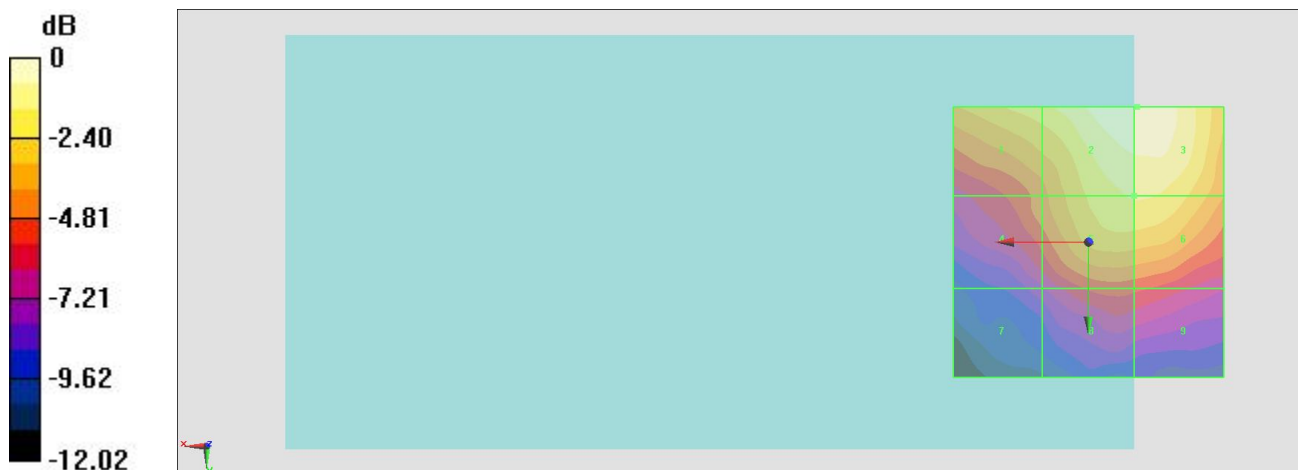
Grid 1 M4 24.2 dBV/m	Grid 2 M4 26 dBV/m	Grid 3 M4 26 dBV/m
Grid 4 M4 21.72 dBV/m	Grid 5 M4 24.47 dBV/m	Grid 6 M4 24.48 dBV/m
Grid 7 M4 18.68 dBV/m	Grid 8 M4 20.85 dBV/m	Grid 9 M4 20.66 dBV/m

Cursor:

Total = 26.00 dBV/m

E Category: M4

Location: -9, -25, 8.7 mm



0 dB = 19.95 V/m = 26.00 dBV/m

#04_HAC_E_CDMA BC1_1xRTT, RC1 SO3, 18th Rate_Ch25

Communication System: CDMA2000, RC1, SO3, 1/8th Rate 25 fr.; Frequency: 1851.25 MHz; Duty Cycle: 1:8.3

Medium: Air Medium parameters used: $\sigma = 0$ S/m, $\epsilon_r = 1$; $\rho = 1000$ kg/m³

Ambient Temperature : 23.2 °C

DASY5 Configuration

- Probe: ER3DV6 - SN2358; ConvF(1, 1, 1); Calibrated: 2016/1/19;
- Sensor-Surface: (Fix Surface)
- Electronics: DAE3 Sn495; Calibrated: 2016/5/27
- Phantom: HAC Test Arch with AMCC; Type: SD HAC P01 BA;
- Measurement SW: DASY52, Version 52.8 (7); SEMCAD X Version 14.6.10 (7164)

Ch25/E Scan - ER3D: 15 mm from Probe Center to the Device/Hearing Aid

Compatibility Test (101x101x1): Interpolated grid: dx=0.5000 mm, dy=0.5000 mm

Device Reference Point: 0, 0, -6.3 mm

Reference Value = 12.61 V/m; Power Drift = -0.07 dB

Applied MIF = 3.26 dB

RF audio interference level = 24.52 dBV/m

Emission category: M4

MIF scaled E-field

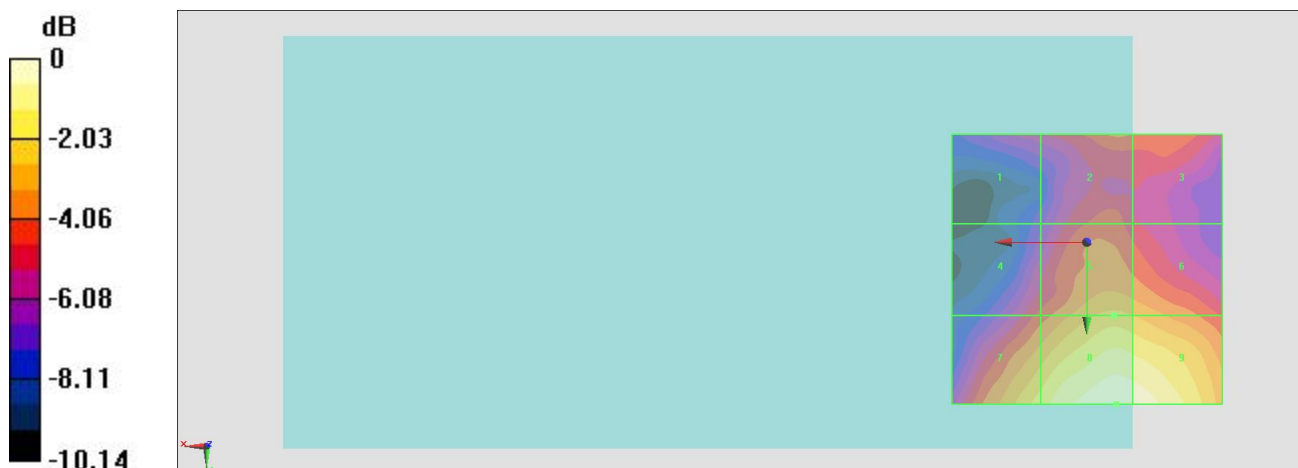
Grid 1 M4 18.97 dBV/m	Grid 2 M4 20.64 dBV/m	Grid 3 M4 20.44 dBV/m
Grid 4 M4 20.08 dBV/m	Grid 5 M4 22.05 dBV/m	Grid 6 M4 21.8 dBV/m
Grid 7 M4 22.89 dBV/m	Grid 8 M4 24.52 dBV/m	Grid 9 M4 24.38 dBV/m

Cursor:

Total = 24.52 dBV/m

E Category: M4

Location: -5.5, 30, 8.7 mm



0 dB = 16.82 V/m = 24.52 dBV/m