

#01_HAC_E_GSM850_GSM Voice_Ch128

Communication System: GSM-FDD (TDMA, GMSK); Frequency: 824.2 MHz; Duty Cycle: 1:8.3
 Medium: Air Medium parameters used: $\sigma = 0$ S/m, $\epsilon_r = 1$; $\rho = 1000$ kg/m³
 Ambient Temperature : 23.6 °C

DASY5 Configuration

- Probe: ER3DV6 - SN2358; ConvF(1, 1, 1); Calibrated: 2016/1/19;
- Sensor-Surface: (Fix Surface)
- Electronics: DAE4 Sn1399; Calibrated: 2015/11/23
- Phantom: HAC Test Arch with AMCC; Type: SD HAC P01 BA;
- Measurement SW: DASY52, Version 52.8 (7); SEMCAD X Version 14.6.10 (7164)

Ch128/E Scan - ER3D: 15 mm from Probe Center to the Device/Hearing Aid

Compatibility Test (101x101x1): Interpolated grid: dx=0.5000 mm, dy=0.5000 mm

Device Reference Point: 0, 0, -6.3 mm

Reference Value = 20.35 V/m; Power Drift = 0.01 dB

Applied MIF = 3.63 dB

RF audio interference level = 27.81 dBV/m

Emission category: M4

MIF scaled E-field

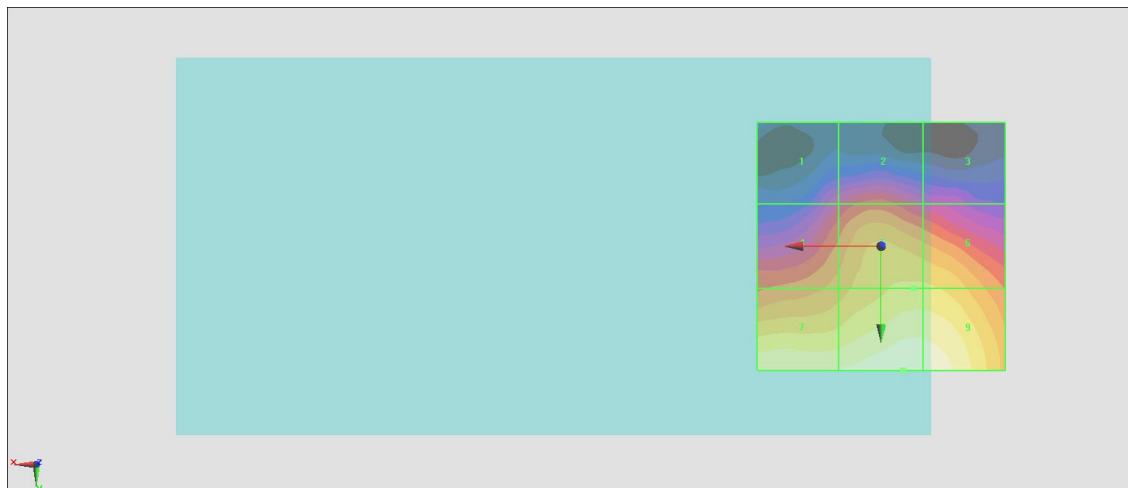
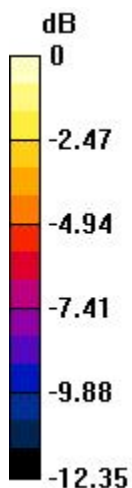
Grid 1 M4 21.24 dBV/m	Grid 2 M4 22.52 dBV/m	Grid 3 M4 20.78 dBV/m
Grid 4 M4 24.14 dBV/m	Grid 5 M4 25.55 dBV/m	Grid 6 M4 25.53 dBV/m
Grid 7 M4 27.05 dBV/m	Grid 8 M4 27.81 dBV/m	Grid 9 M4 27.63 dBV/m

Cursor:

Total = 27.81 dBV/m

E Category: M4

Location: -4.5, 25, 8.7 mm



0 dB = 24.57 V/m = 27.81 dBV/m

#02_HAC_E_GSM850_GSM Voice_Ch189

Communication System: GSM-FDD (TDMA, GMSK); Frequency: 836.4 MHz; Duty Cycle: 1:8.3

Medium: Air Medium parameters used: $\sigma = 0$ S/m, $\epsilon_r = 1$; $\rho = 1000$ kg/m³

Ambient Temperature : 23.6 °C

DASY5 Configuration

- Probe: ER3DV6 - SN2358; ConvF(1, 1, 1); Calibrated: 2016/1/19;
- Sensor-Surface: (Fix Surface)
- Electronics: DAE4 Sn1399; Calibrated: 2015/11/23
- Phantom: HAC Test Arch with AMCC; Type: SD HAC P01 BA;
- Measurement SW: DASY52, Version 52.8 (7); SEMCAD X Version 14.6.10 (7164)

Ch189/E Scan - ER3D: 15 mm from Probe Center to the Device/Hearing Aid

Compatibility Test (101x101x1): Interpolated grid: dx=0.5000 mm, dy=0.5000 mm

Device Reference Point: 0, 0, -6.3 mm

Reference Value = 21.95 V/m; Power Drift = -0.04 dB

Applied MIF = 3.63 dB

RF audio interference level = 29.28 dBV/m

Emission category: M4

MIF scaled E-field

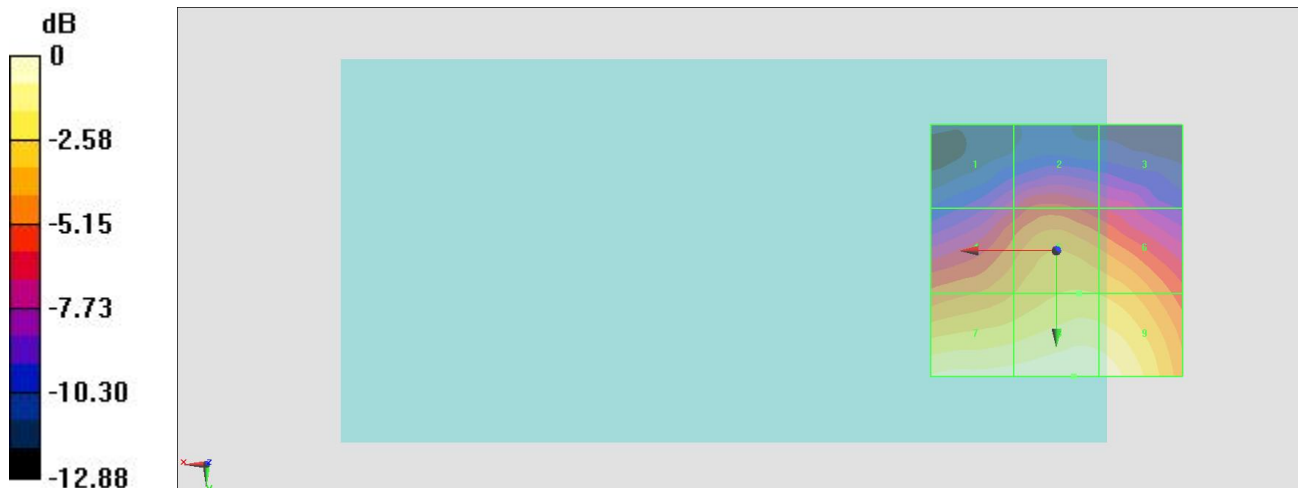
Grid 1 M4 22.31 dBV/m	Grid 2 M4 23.65 dBV/m	Grid 3 M4 22.53 dBV/m
Grid 4 M4 25.85 dBV/m	Grid 5 M4 26.83 dBV/m	Grid 6 M4 26.69 dBV/m
Grid 7 M4 28.87 dBV/m	Grid 8 M4 29.28 dBV/m	Grid 9 M4 29.02 dBV/m

Cursor:

Total = 29.28 dBV/m

E Category: M4

Location: -3.5, 25, 8.7 mm



0 dB = 29.12 V/m = 29.28 dBV/m

#03_HAC_E_GSM850_GSM Voice_Ch251

Communication System: GSM-FDD (TDMA, GMSK); Frequency: 848.8 MHz; Duty Cycle: 1:8.3

Medium: Air Medium parameters used: $\sigma = 0$ S/m, $\epsilon_r = 1$; $\rho = 1000$ kg/m³

Ambient Temperature : 23.6 °C

DASY5 Configuration

- Probe: ER3DV6 - SN2358; ConvF(1, 1, 1); Calibrated: 2016/1/19;
- Sensor-Surface: (Fix Surface)
- Electronics: DAE4 Sn1399; Calibrated: 2015/11/23
- Phantom: HAC Test Arch with AMCC; Type: SD HAC P01 BA;
- Measurement SW: DASY52, Version 52.8 (7); SEMCAD X Version 14.6.10 (7164)

Ch251/E Scan - ER3D: 15 mm from Probe Center to the Device/Hearing Aid

Compatibility Test (101x101x1): Interpolated grid: dx=0.5000 mm, dy=0.5000 mm

Device Reference Point: 0, 0, -6.3 mm

Reference Value = 20.76 V/m; Power Drift = 0.01 dB

Applied MIF = 3.63 dB

RF audio interference level = 29.26 dBV/m

Emission category: M4

MIF scaled E-field

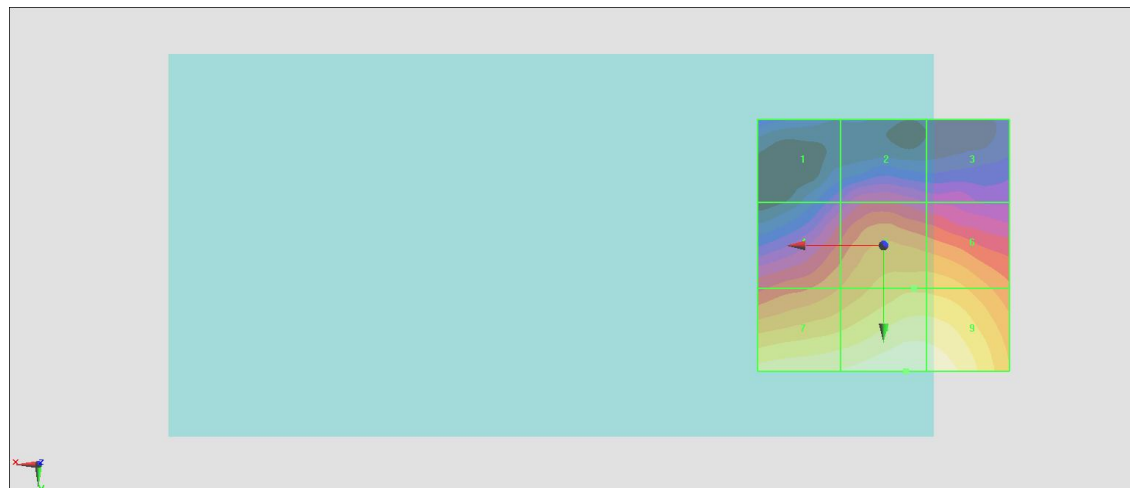
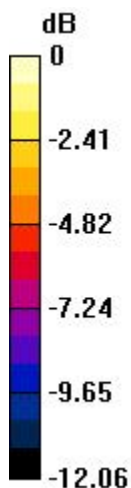
Grid 1 M4 21.41 dBV/m	Grid 2 M4 23 dBV/m	Grid 3 M4 22.08 dBV/m
Grid 4 M4 25.29 dBV/m	Grid 5 M4 26.7 dBV/m	Grid 6 M4 26.68 dBV/m
Grid 7 M4 28.54 dBV/m	Grid 8 M4 29.26 dBV/m	Grid 9 M4 29.15 dBV/m

Cursor:

Total = 29.26 dBV/m

E Category: M4

Location: -4.5, 25, 8.7 mm



0 dB = 29.04 V/m = 29.26 dBV/m

#05_HAC_E_GSM1900_GSM Voice_Ch512

Communication System: GSM-FDD (TDMA, GMSK); Frequency: 1850.2 MHz; Duty Cycle: 1:8.3
 Medium: Air Medium parameters used: $\sigma = 0$ S/m, $\epsilon_r = 1$; $\rho = 1000$ kg/m³
 Ambient Temperature : 23.6 °C

DASY5 Configuration

- Probe: ER3DV6 - SN2358; ConvF(1, 1, 1); Calibrated: 2016/1/19;
- Sensor-Surface: (Fix Surface)
- Electronics: DAE4 Sn1399; Calibrated: 2015/11/23
- Phantom: HAC Test Arch with AMCC; Type: SD HAC P01 BA;
- Measurement SW: DASY52, Version 52.8 (7); SEMCAD X Version 14.6.10 (7164)

Ch512/E Scan - ER3D: 15 mm from Probe Center to the Device/Hearing Aid

Compatibility Test (101x101x1): Interpolated grid: dx=0.5000 mm, dy=0.5000 mm

Device Reference Point: 0, 0, -6.3 mm

Reference Value = 18.88 V/m; Power Drift = -0.02 dB

Applied MIF = 3.63 dB

RF audio interference level = 30.21 dBV/m

Emission category: M3

MIF scaled E-field

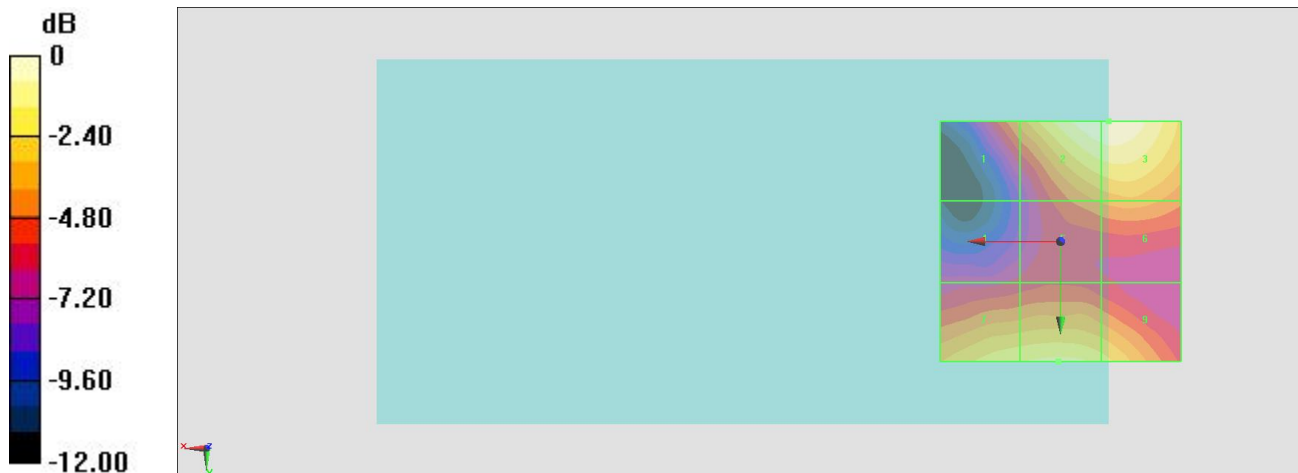
Grid 1 M4 26.56 dBV/m	Grid 2 M3 30.17 dBV/m	Grid 3 M3 30.21 dBV/m
Grid 4 M4 24.13 dBV/m	Grid 5 M4 26.38 dBV/m	Grid 6 M4 26.79 dBV/m
Grid 7 M4 28.62 dBV/m	Grid 8 M4 28.87 dBV/m	Grid 9 M4 28.24 dBV/m

Cursor:

Total = 30.21 dBV/m

E Category: M3

Location: -10, -25, 8.7 mm



0 dB = 32.41 V/m = 30.21 dBV/m

#06_HAC_E_GSM1900_GSM Voice_Ch661

Communication System: GSM-FDD (TDMA, GMSK); Frequency: 1880 MHz; Duty Cycle: 1:8.3
 Medium: Air Medium parameters used: $\sigma = 0$ S/m, $\epsilon_r = 1$; $\rho = 1000$ kg/m³
 Ambient Temperature : 23.6 °C

DASY5 Configuration

- Probe: ER3DV6 - SN2358; ConvF(1, 1, 1); Calibrated: 2016/1/19;
- Sensor-Surface: (Fix Surface)
- Electronics: DAE4 Sn1399; Calibrated: 2015/11/23
- Phantom: HAC Test Arch with AMCC; Type: SD HAC P01 BA;
- Measurement SW: DASY52, Version 52.8 (7); SEMCAD X Version 14.6.10 (7164)

Ch661/E Scan - ER3D: 15 mm from Probe Center to the Device/Hearing Aid

Compatibility Test (101x101x1): Interpolated grid: dx=0.5000 mm, dy=0.5000 mm

Device Reference Point: 0, 0, -6.3 mm

Reference Value = 19.36 V/m; Power Drift = -0.10 dB

Applied MIF = 3.63 dB

RF audio interference level = 30.42 dBV/m

Emission category: M3

MIF scaled E-field

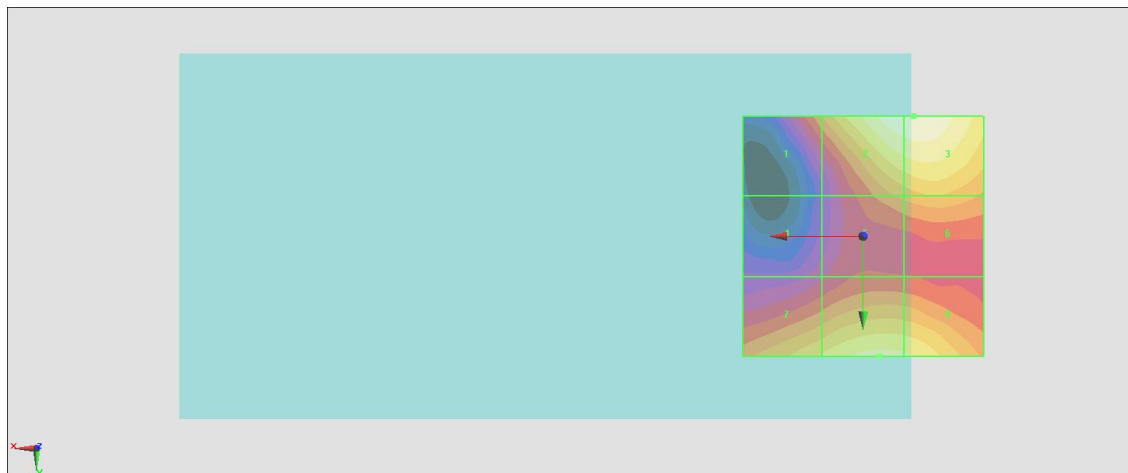
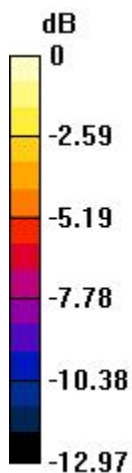
Grid 1 M4 26.13 dBV/m	Grid 2 M3 30.35 dBV/m	Grid 3 M3 30.42 dBV/m
Grid 4 M4 23.42 dBV/m	Grid 5 M4 26.42 dBV/m	Grid 6 M4 27 dBV/m
Grid 7 M4 28 dBV/m	Grid 8 M4 29.04 dBV/m	Grid 9 M4 28.9 dBV/m

Cursor:

Total = 30.42 dBV/m

E Category: M3

Location: -10.5, -25, 8.7 mm



0 dB = 33.20 V/m = 30.42 dBV/m

#07_HAC_E_GSM1900_GSM Voice_Ch810

Communication System: GSM-FDD (TDMA, GMSK); Frequency: 1909.8 MHz; Duty Cycle: 1:8.3

Medium: Air Medium parameters used: $\sigma = 0$ S/m, $\epsilon_r = 1$; $\rho = 1000$ kg/m³

Ambient Temperature : 23.6 °C

DASY5 Configuration

- Probe: ER3DV6 - SN2358; ConvF(1, 1, 1); Calibrated: 2016/1/19;
- Sensor-Surface: (Fix Surface)
- Electronics: DAE4 Sn1399; Calibrated: 2015/11/23
- Phantom: HAC Test Arch with AMCC; Type: SD HAC P01 BA;
- Measurement SW: DASY52, Version 52.8 (7); SEMCAD X Version 14.6.10 (7164)

Ch810/E Scan - ER3D: 15 mm from Probe Center to the Device/Hearing Aid

Compatibility Test (101x101x1): Interpolated grid: dx=0.5000 mm, dy=0.5000 mm

Device Reference Point: 0, 0, -6.3 mm

Reference Value = 19.63 V/m; Power Drift = -0.05 dB

Applied MIF = 3.63 dB

RF audio interference level = 30.54 dBV/m

Emission category: M3

MIF scaled E-field

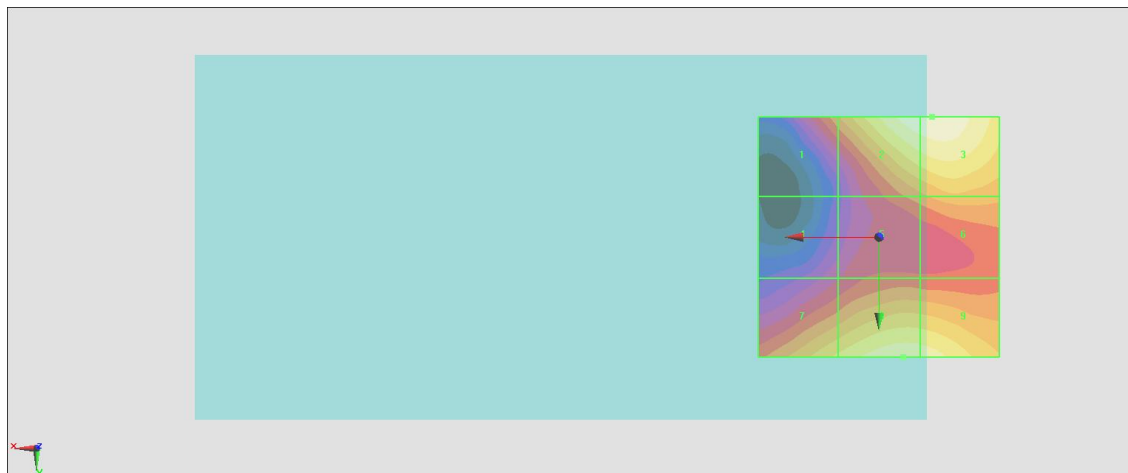
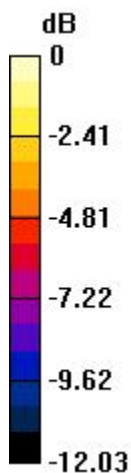
Grid 1 M4 26.43 dBV/m	Grid 2 M3 30.43 dBV/m	Grid 3 M3 30.54 dBV/m
Grid 4 M4 24.09 dBV/m	Grid 5 M4 26.27 dBV/m	Grid 6 M4 27.15 dBV/m
Grid 7 M4 28.37 dBV/m	Grid 8 M4 29.6 dBV/m	Grid 9 M4 29.51 dBV/m

Cursor:

Total = 30.54 dBV/m

E Category: M3

Location: -11, -25, 8.7 mm



0 dB = 33.64 V/m = 30.54 dBV/m

#08_HAC_E_LTE Band 38_20M_QPSK_1_0_Ch37850

Communication System: LTE-TDD (SC-FDMA, 1 RB, 20 MHz, QPSK); Frequency: 2580 MHz; Duty Cycle: 1:1.59

Medium: Air Medium parameters used: $\sigma = 0$ S/m, $\epsilon_r = 1$; $\rho = 0$ kg/m³

Ambient Temperature : 23.4 °C

DASY5 Configuration

- Probe: ER3DV6 - SN2358; ConvF(1, 1, 1); Calibrated: 2016/1/19;
- Sensor-Surface: (Fix Surface)
- Electronics: DAE4 Sn778; Calibrated: 2016/5/12
- Phantom: HAC Test Arch with AMCC; Type: SD HAC P01 BA;
- Measurement SW: DASY52, Version 52.8 (7); SEMCAD X Version 14.6.10 (7164)

Ch37850/E Scan - ER3D: 15 mm from Probe Center to the Device/Hearing Aid

Compatibility Test (101x101x1): Interpolated grid: dx=0.5000 mm, dy=0.5000 mm

Device Reference Point: 0, 0, -6.3 mm

Reference Value = 7.349 V/m; Power Drift = 0.17 dB

Applied MIF = -1.62 dB

RF audio interference level = 22.24 dBV/m

Emission category: M4

MIF scaled E-field

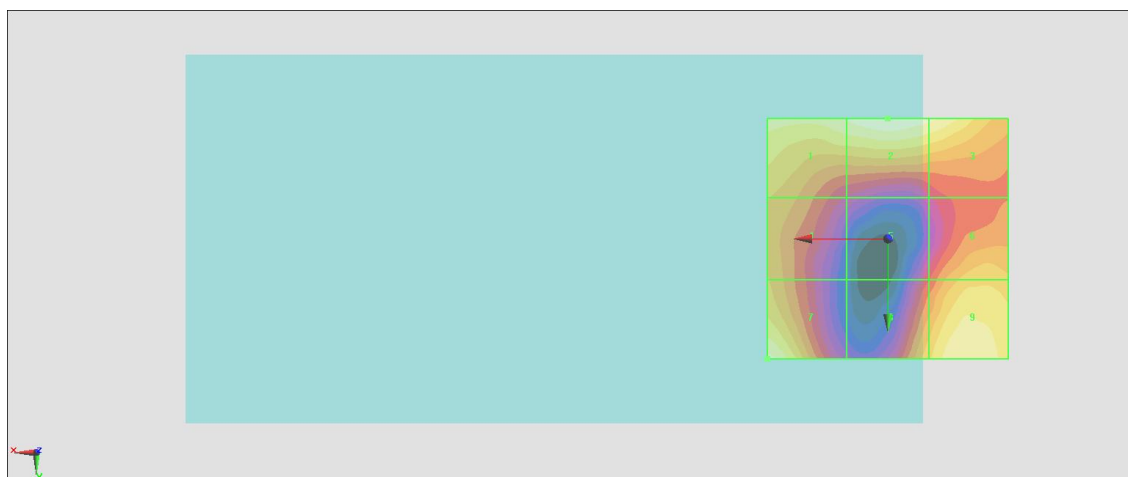
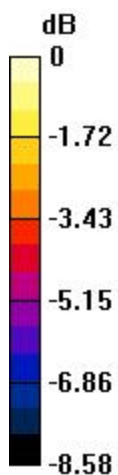
Grid 1 M4 21.73 dBV/m	Grid 2 M4 22.24 dBV/m	Grid 3 M4 21.83 dBV/m
Grid 4 M4 20 dBV/m	Grid 5 M4 18.22 dBV/m	Grid 6 M4 20.39 dBV/m
Grid 7 M4 21.93 dBV/m	Grid 8 M4 20.41 dBV/m	Grid 9 M4 21.67 dBV/m

Cursor:

Total = 22.24 dBV/m

E Category: M4

Location: 0, -25, 8.7 mm



0 dB = 12.93 V/m = 22.23 dBV/m

#09_HAC_E_LTE Band 38_20M_QPSK_1_0_Ch38000

Communication System: LTE-TDD (SC-FDMA, 1 RB, 20 MHz, QPSK); Frequency: 2595 MHz; Duty Cycle: 1:1.59

Medium: Air Medium parameters used: $\sigma = 0$ S/m, $\epsilon_r = 1$; $\rho = 0$ kg/m³

Ambient Temperature : 23.4 °C

DASY5 Configuration

- Probe: ER3DV6 - SN2358; ConvF(1, 1, 1); Calibrated: 2016/1/19;
- Sensor-Surface: (Fix Surface)
- Electronics: DAE4 Sn778; Calibrated: 2016/5/12
- Phantom: HAC Test Arch with AMCC; Type: SD HAC P01 BA;
- Measurement SW: DASY52, Version 52.8 (7); SEMCAD X Version 14.6.10 (7164)

Ch38000/E Scan - ER3D: 15 mm from Probe Center to the Device/Hearing Aid

Compatibility Test (101x101x1): Interpolated grid: dx=0.5000 mm, dy=0.5000 mm

Device Reference Point: 0, 0, -6.3 mm

Reference Value = 9.394 V/m; Power Drift = -0.17 dB

Applied MIF = -1.62 dB

RF audio interference level = 23.00 dBV/m

Emission category: M4

MIF scaled E-field

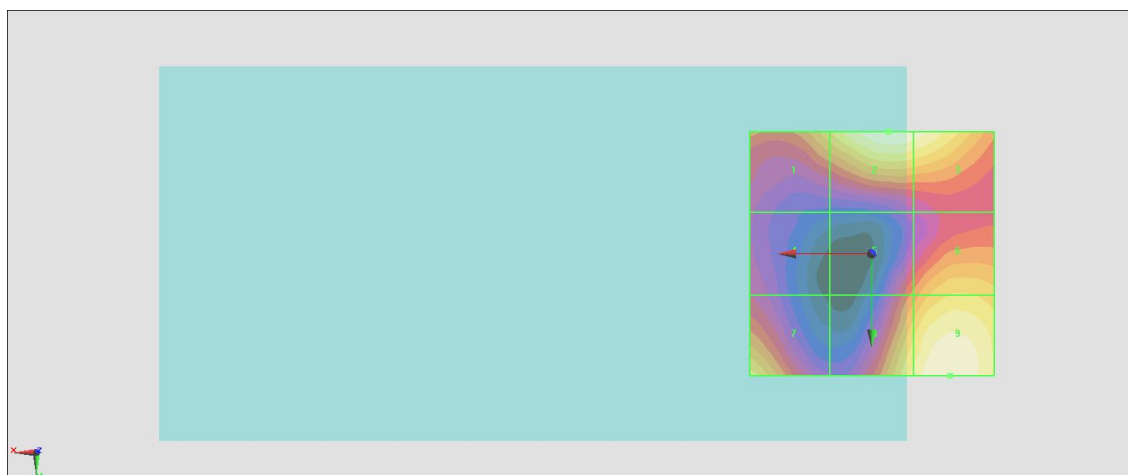
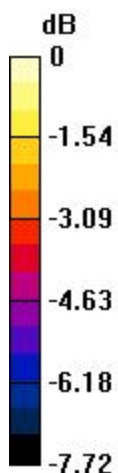
Grid 1 M4 21.45 dBV/m	Grid 2 M4 23 dBV/m	Grid 3 M4 22.83 dBV/m
Grid 4 M4 18.9 dBV/m	Grid 5 M4 20.12 dBV/m	Grid 6 M4 21.54 dBV/m
Grid 7 M4 21.81 dBV/m	Grid 8 M4 22.15 dBV/m	Grid 9 M4 22.97 dBV/m

Cursor:

Total = 23.00 dBV/m

E Category: M4

Location: -3.5, -25, 8.7 mm



0 dB = 14.12 V/m = 23.00 dBV/m

#10_HAC_E_LTE Band 38_20M_QPSK_1_0_Ch38150

Communication System: LTE-TDD (SC-FDMA, 1 RB, 20 MHz, QPSK); Frequency: 2610 MHz; Duty Cycle: 1:1.59

Medium: Air Medium parameters used: $\sigma = 0$ S/m, $\epsilon_r = 1$; $\rho = 0$ kg/m³

Ambient Temperature : 23.4 °C

DASY5 Configuration

- Probe: ER3DV6 - SN2358; ConvF(1, 1, 1); Calibrated: 2016/1/19;
- Sensor-Surface: (Fix Surface)
- Electronics: DAE4 Sn778; Calibrated: 2016/5/12
- Phantom: HAC Test Arch with AMCC; Type: SD HAC P01 BA;
- Measurement SW: DASY52, Version 52.8 (7); SEMCAD X Version 14.6.10 (7164)

Ch38150/E Scan - ER3D: 15 mm from Probe Center to the Device/Hearing Aid

Compatibility Test (101x101x1): Interpolated grid: dx=0.5000 mm, dy=0.5000 mm

Device Reference Point: 0, 0, -6.3 mm

Reference Value = 7.885 V/m; Power Drift = 0.08 dB

Applied MIF = -1.62 dB

RF audio interference level = 22.51 dBV/m

Emission category: M4

MIF scaled E-field

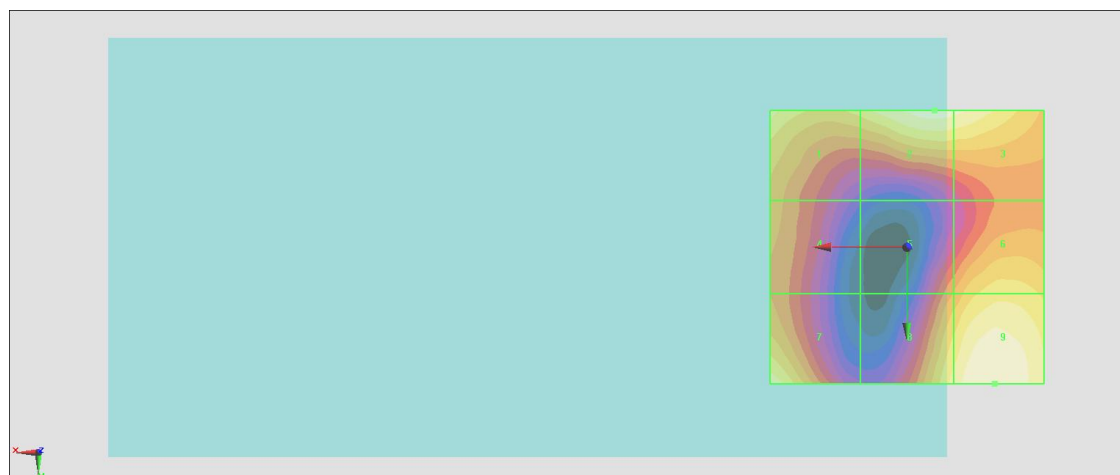
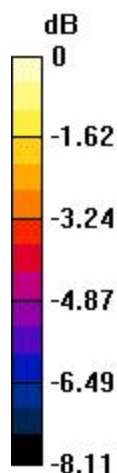
Grid 1 M4 21.69 dBV/m	Grid 2 M4 22.24 dBV/m	Grid 3 M4 22.14 dBV/m
Grid 4 M4 20.19 dBV/m	Grid 5 M4 19.87 dBV/m	Grid 6 M4 21.25 dBV/m
Grid 7 M4 21.87 dBV/m	Grid 8 M4 21.66 dBV/m	Grid 9 M4 22.51 dBV/m

Cursor:

Total = 22.51 dBV/m

E Category: M4

Location: -16, 25, 8.7 mm



0 dB = 13.35 V/m = 22.51 dBV/m

#11_HAC_E_LTE Band 38_20M_16QAM_1_0_Ch37850

Communication System: LTE-TDD (SC-FDMA, 1 RB, 20 MHz, 16-QAM); Frequency: 2580 MHz; Duty Cycle: 1:1.59

Medium: Air Medium parameters used: $\sigma = 0$ S/m, $\epsilon_r = 1$; $\rho = 0$ kg/m³

Ambient Temperature : 23.4 °C

DASY5 Configuration

- Probe: ER3DV6 - SN2358; ConvF(1, 1, 1); Calibrated: 2016/1/19;
- Sensor-Surface: (Fix Surface)
- Electronics: DAE4 Sn778; Calibrated: 2016/5/12
- Phantom: HAC Test Arch with AMCC; Type: SD HAC P01 BA;
- Measurement SW: DASY52, Version 52.8 (7); SEMCAD X Version 14.6.10 (7164)

Ch37850/E Scan - ER3D: 15 mm from Probe Center to the Device/Hearing Aid

Compatibility Test (101x101x1): Interpolated grid: dx=0.5000 mm, dy=0.5000 mm

Device Reference Point: 0, 0, -6.3 mm

Reference Value = 8.024 V/m; Power Drift = -0.18 dB

Applied MIF = -1.44 dB

RF audio interference level = 20.79 dBV/m

Emission category: M4

MIF scaled E-field

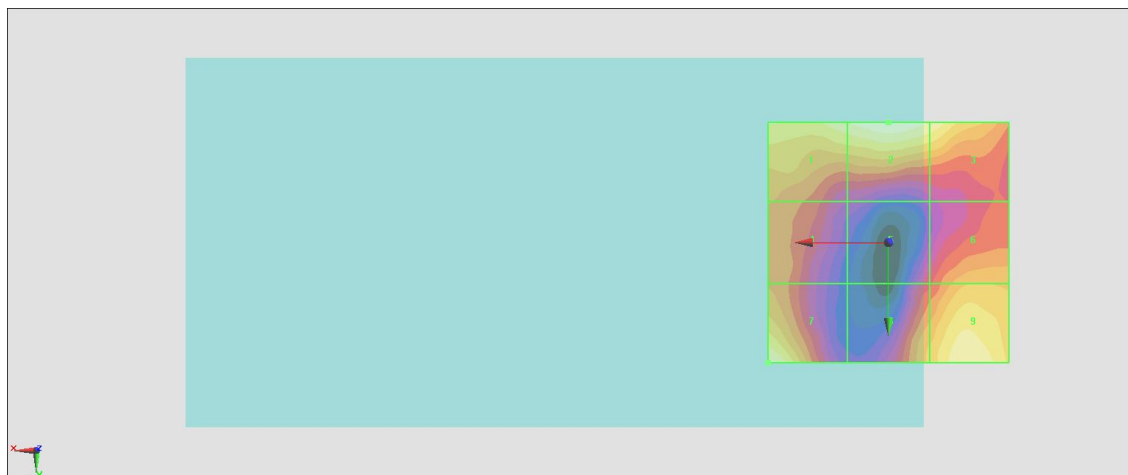
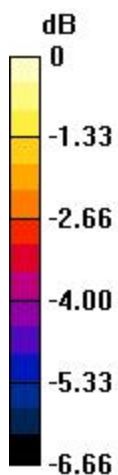
Grid 1 M4 20.33 dBV/m	Grid 2 M4 20.79 dBV/m	Grid 3 M4 20.34 dBV/m
Grid 4 M4 18.63 dBV/m	Grid 5 M4 17.58 dBV/m	Grid 6 M4 19.01 dBV/m
Grid 7 M4 20.58 dBV/m	Grid 8 M4 19.15 dBV/m	Grid 9 M4 20.29 dBV/m

Cursor:

Total = 20.79 dBV/m

E Category: M4

Location: 0, -25, 8.7 mm



0 dB = 10.95 V/m = 20.79 dBV/m

#12_HAC_E_LTE Band 38_20M_16QAM_1_0_Ch38000

Communication System: LTE-TDD (SC-FDMA, 1 RB, 20 MHz, 16-QAM); Frequency: 2595 MHz; Duty Cycle: 1:1.59

Medium: Air Medium parameters used: $\sigma = 0$ S/m, $\epsilon_r = 1$; $\rho = 0$ kg/m³

Ambient Temperature : 23.4 °C

DASY5 Configuration

- Probe: ER3DV6 - SN2358; ConvF(1, 1, 1); Calibrated: 2016/1/19;
- Sensor-Surface: (Fix Surface)
- Electronics: DAE4 Sn778; Calibrated: 2016/5/12
- Phantom: HAC Test Arch with AMCC; Type: SD HAC P01 BA;
- Measurement SW: DASY52, Version 52.8 (7); SEMCAD X Version 14.6.10 (7164)

Ch38000/E Scan - ER3D: 15 mm from Probe Center to the Device/Hearing Aid

Compatibility Test (101x101x1): Interpolated grid: dx=0.5000 mm, dy=0.5000 mm

Device Reference Point: 0, 0, -6.3 mm

Reference Value = 8.444 V/m; Power Drift = 0.19 dB

Applied MIF = -1.44 dB

RF audio interference level = 21.27 dBV/m

Emission category: M4

MIF scaled E-field

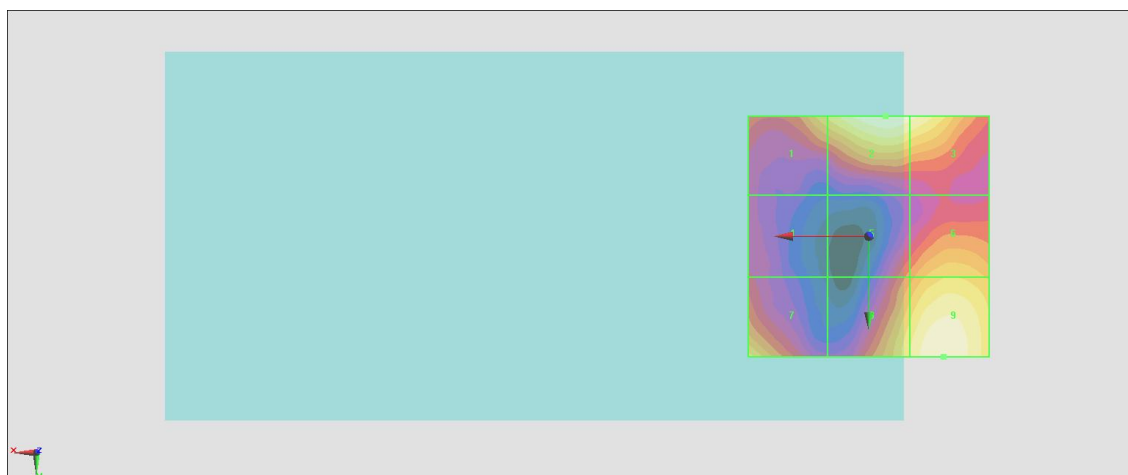
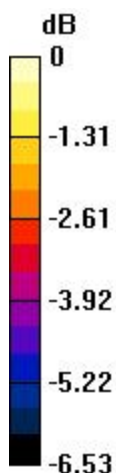
Grid 1 M4 20.09 dBV/m	Grid 2 M4 21.27 dBV/m	Grid 3 M4 21.04 dBV/m
Grid 4 M4 17.96 dBV/m	Grid 5 M4 18.9 dBV/m	Grid 6 M4 19.99 dBV/m
Grid 7 M4 20.25 dBV/m	Grid 8 M4 20.46 dBV/m	Grid 9 M4 21.22 dBV/m

Cursor:

Total = 21.27 dBV/m

E Category: M4

Location: -3.5, -25, 8.7 mm



0 dB = 11.58 V/m = 21.27 dBV/m

#13_HAC_E_LTE Band 38_20M_16QAM_1_0_Ch38150

Communication System: LTE-TDD (SC-FDMA, 1 RB, 20 MHz, 16-QAM); Frequency: 2610 MHz; Duty Cycle: 1:1.59

Medium: Air Medium parameters used: $\sigma = 0$ S/m, $\epsilon_r = 1$; $\rho = 0$ kg/m³

Ambient Temperature : 23.4 °C

DASY5 Configuration

- Probe: ER3DV6 - SN2358; ConvF(1, 1, 1); Calibrated: 2016/1/19;
- Sensor-Surface: (Fix Surface)
- Electronics: DAE4 Sn778; Calibrated: 2016/5/12
- Phantom: HAC Test Arch with AMCC; Type: SD HAC P01 BA;
- Measurement SW: DASY52, Version 52.8 (7); SEMCAD X Version 14.6.10 (7164)

Ch38150/E Scan - ER3D: 15 mm from Probe Center to the Device/Hearing Aid

Compatibility Test (101x101x1): Interpolated grid: dx=0.5000 mm, dy=0.5000 mm

Device Reference Point: 0, 0, -6.3 mm

Reference Value = 8.120 V/m; Power Drift = -0.09 dB

Applied MIF = -1.44 dB

RF audio interference level = 21.07 dBV/m

Emission category: M4

MIF scaled E-field

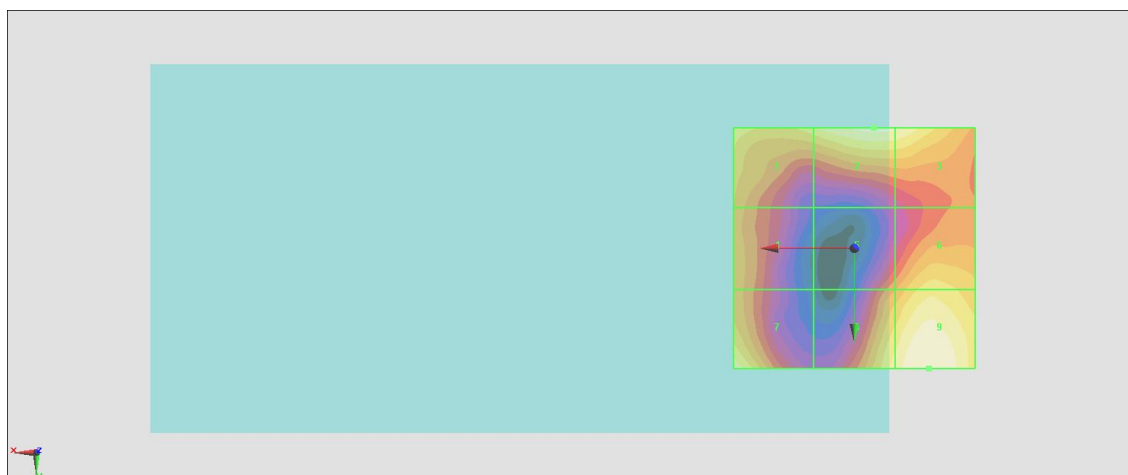
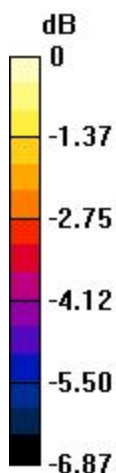
Grid 1 M4 20.17 dBV/m	Grid 2 M4 20.8 dBV/m	Grid 3 M4 20.7 dBV/m
Grid 4 M4 19.19 dBV/m	Grid 5 M4 18.75 dBV/m	Grid 6 M4 19.96 dBV/m
Grid 7 M4 20.58 dBV/m	Grid 8 M4 20.37 dBV/m	Grid 9 M4 21.07 dBV/m

Cursor:

Total = 21.07 dBV/m

E Category: M4

Location: -15.5, 25, 8.7 mm



0 dB = 11.31 V/m = 21.07 dBV/m